

Exam Code: ACP-610

Exam Name: Managing Jira Projects for Data Center and Server Certification

Exam A

QUESTION 1

Review the Version Report:

Version Report TIS: 3.0 *

Scheduled Release Date: 14/Sep/15



- A. The release date that has been added to this version should be reconsidered.
- B. More than 20 story points were burned when this chart was reviewed in July 2015.
- C. Only three issues have been completed in the version, so a predicted end date is not possible.
- D. The team should use time-based estimation, not story points.
- E. There are too many unestimated issues in this version, so any predictions are inaccurate.

Correct Answer: B

Section:

QUESTION 2

You need to display data on a dashboard that shows the correlation between the following:

- * the number of days that issues have been open
- * the number of comments on the issues
- * the number of participants on the issues

Identify the single gadget that meets these requirements.

- A. Heat Map
- B. Bubble Chart
- C. Activity Stream
- D. Issue Statistics

E. Voted Issues

Correct Answer: B

Section:

QUESTION 3

Darren wants to analyze the performance of his support teams. Less time in the Waiting for Support status indicates optimal team performance. The report should provide a way to dynamically analyze not only specific days but also specific time frames. Which report provides this information?

- A. Average Age Report
- B. Recently Created Issues Report
- C. Created vs Resolved Issues Report
- D. Control Chart
- E. Resolution Time Report

Correct Answer: D

Section:

Explanation:

A Control Chart is the best report to provide the information that Darren wants. A Control Chart shows the cycle time or lead time for your team's issues, broken down by the time spent in each status. It helps you identify whether data from the current process can be used to determine future performance. Less time in the Waiting for Support status indicates optimal team performance, as it means that the issues are being addressed promptly and efficiently. A Control Chart also provides a way to dynamically analyze not only specific days but also specific time frames, by using the date range selector and the zoom feature. You can also filter the chart by issue type, assignee, label, or any other field. Reference: Managing Jira Projects Data Center and Server: Certification Bundle, [Control Chart | Jira Software Cloud]

QUESTION 4

A shared dashboard displays a gadget that is based on a shared filter. Currently, each person who views the gadget sees counts of all the issues in a project by status. The team's requirement is that each person who views the gadget will see counts of only their assigned issues by status. What must you do in order to meet this requirement?

- A. Configure the 'Who can view this filter' setting.
- B. Reconfigure the dashboard viewers.
- C. Use the currentUser() JQL function in the filter.
- D. Replace it with the 'Assigned to Me' gadget
- E. Modify the Assignable User permission.

Correct Answer: C

Section:

Explanation:

The best way to meet the team's requirement is to use the currentUser() JQL function in the filter. This function returns the current user who is viewing the gadget, and can be used to filter issues by assignee. For example, if the filter is "project = ABC and assignee = currentUser()", then each person who views the gadget will see counts of only their assigned issues by status. This way, you do not need to reconfigure the dashboard viewers or modify the Assignable User permission, which are global settings that affect all users. You also do not need to replace it with the "Assigned to Me" gadget, which does not show counts by status. Configuring the "Who can view this filter" setting does not affect the results of the filter, but only its visibility. Reference: Managing Jira Projects Data Center and Server: Certification Bundle, [Advanced searching - functions reference | Jira Software Cloud]

QUESTION 5

A scrum team asks you for a single comprehensive list of issues that were completed in the last sprint-Additionally, they need to know:

- * the story points associated with each completed issue
- * the issue type of each completed issue

* the description of each issue that has not been completed
Which report or gadget provides the required information?

- A. Burndown Chart report
- B. Sprint Report
- C. Created vs Resolved
- D. Chart gadget
- E. Filter Results gadget
- F. Sprint Health Gadget

Correct Answer: B

Section:

Explanation:

A Sprint Report is the best report to provide a single comprehensive list of issues that were completed in the last sprint. A Sprint Report shows the scope, status, and completion date of each sprint. It also displays a breakdown of the completed, incomplete, and added issues in the sprint. The team can see the story points associated with each completed issue, as well as the issue type of each completed issue. They can also see the description of each issue that has not been completed by clicking on the issue key or summary. A Sprint Report also helps to track the team's performance and identify any scope changes during the sprint. Reference: Managing Jira Projects Data Center and Server: Certification Bundle, [Sprint Report | Jira Software Cloud]

QUESTION 6

Your team often accepts new requests from outside groups during an active sprint. You want to see if such frequent scope change mid-sprint is causing bottlenecks. Which report provides the needed insight?

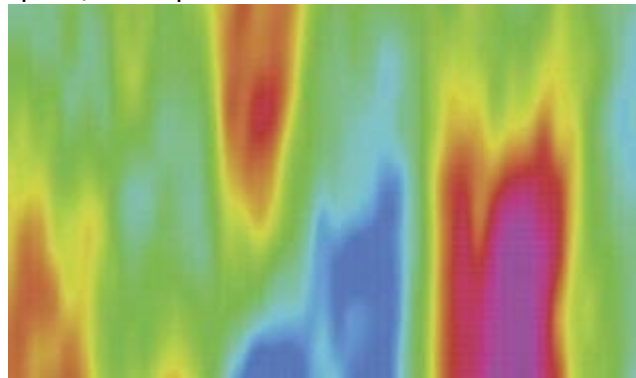
- A. Control Chart
- B. Burndown Chart
- C. Average Age Chart
- D. Velocity Chart
- E. Cumulative Flow Diagram

Correct Answer: E

Section:

Explanation:

The Cumulative Flow Diagram is the report that provides the needed insight to see if frequent scope change mid-sprint is causing bottlenecks. The Cumulative Flow Diagram shows the quantity and distribution of work items along different stages of a process over time. The report can help identify potential bottlenecks in the workflow by showing where work items accumulate or stagnate over time. For example, if the report shows a sudden increase or a wide band of work items in the "In Progress" stage, it may indicate that the team is overloaded with work or facing some blockers. If the team often accepts new requests from outside groups during an active sprint, the report can show how this affects the flow of work and the completion of the sprint goal. Reference: Managing Jira Projects Data Center and Server: Certification Bundle, Cumulative Flow Diagram



QUESTION 7

You need to find all issues that were not completed in some past sprint, and that are now part of an active sprint. Identify two functions that you need to use in your JQL query. (Choose two.)

- A. closedSprints()
- B. futures prints()
- C. completed()
- D. remaming()
- E. openSprints()

Correct Answer: A, E

Section:

Explanation:

The two functions that are needed to use in the JQL query to find all issues that were not completed in some past sprint, and that are now part of an active sprint are closedSprints() and openSprints(). The closedSprints() function returns all issues that are assigned to a completed sprint. The openSprints() function returns all issues that are assigned to an incomplete sprint. By combining these two functions with the NOT operator, we can filter out the issues that belong to both a completed sprint and an incomplete sprint, and only get the issues that were not completed in some past sprint, and that are now part of an active sprint. For example, the JQL query could be:

```
project = XYZ AND issuekey NOT IN (closedSprints() AND openSprints())
```

This query will return all issues in project XYZ that are not in both a closed sprint and an open sprint, meaning they are either in a closed sprint only or an open sprint only. Since we are looking for issues that are now part of an active sprint, we can assume they are in an open sprint only. Reference: Advanced search reference - JQL functions, Modifying closedSprints() to return previous two Sprints, JQL - Explanation of what closedSprints() does

QUESTION 8

You want to create a new Scrum board with the following requirements:

- * Show all issue types from project BERT but do not show sub-tasks in the backlog
- * Show only epics from project ERNIE
- * Do not show issues from any other projects

Which board filler query meets these requirements?

- A. project in (BERT, ERNIE) AND type in (standardIssueTypesG, Epic)
- B. project in (BERT, ERNIE) AND issuetype - Epic AND type not in subTaskIssueTypesO
- C. (project = BERT AND type not in subTaskIssueTypesO) OR (project = ERNIE AND issuetype Epic)
- D. project = BERT OR (project - ERNIE AND type = Epic)
- E. (project - BERT AND type in standardIssueTypes(J) OR (project - ERNIE AND issuetype -Epic)

Correct Answer: C

Section:

Explanation:

The board filter query that meets these requirements is (project = BERT AND type not in subTaskIssueTypesO) OR (project = ERNIE AND issuetype Epic). This query will show all issue types from project BERT except sub-tasks, as well as only epics from project ERNIE. It will not show issues from any other projects, as it uses the OR operator to combine two conditions that specify the project names. The other queries do not meet all the requirements, as they either include sub-tasks from project BERT, exclude epics from project ERNIE, or show issues from other projects. Reference: Configuring filters, Advanced searching - fields reference

QUESTION 9

Some issues in your project have labels and others do not.

Some tasks in your project are identified by a distinct label: daily_business. You need to prevent these issues from being displayed on the team's Scrum board

Which solution meets this requirement?

- A. * Create a quick filter * Add: NOT labels='daily_business_
- B. * Update the board sub-filter * Add; AND NOT labels = daily business
- C. * Update the board filter * Add: AND labels NOT IN (daily.business, EMPTY:
- D. * Update the board filter * Add: AND (labels != daily, business OR labels IS EMF

Correct Answer: D

Section:**Explanation:**

The solution that meets this requirement is to update the board filter and add: AND (labels != daily.business OR labels IS EMPTY). This will exclude issues that have the label daily_business from the board filter, which determines which issues are displayed on the board. It will also include issues that have no labels at all, as some issues in your project may not have labels. The other solutions do not meet this requirement, as they either do not exclude issues with daily_business label, or exclude issues with no labels. Reference: Configuring filters, Advanced searching - operators reference

QUESTION 10

You are reviewing the Velocity Chart for your team and notice that they completed more story points than they committed in their last sprint. You are definitely the only person who can add issues to sprints in your project. How did your team complete more story points than they committed?

- A. The sprint was completed early.
- B. An epic with a story point estimate was completed during the sprint.
- C. Someone increased the story point value on an issue mid-sprint.
- D. A sub-task was in an unmapped status at the start of the sprint.
- E. A new sub-task was created during the sprint

Correct Answer: C**Section:****Explanation:**

The reason why your team completed more story points than they committed in their last sprint is that someone increased the story point value on an issue mid-sprint. This will increase the total story points completed at the end of the sprint, but not affect the total story points committed at the start of the sprint. Therefore, it will result in a positive scope change. The other reasons mentioned in the question do not explain why your team completed more story points than they committed, as they either do not affect story points at all, or affect both committed and completed story points equally. Reference: Viewing the Velocity Chart, Scope change

QUESTION 11

Gen prioritizes and triages support requests as soon as they come in. She now wants to use drag-and-drop to:

- * quickly assign and transition them to In Progress
- * instantly associate them with Epics

Which board view will meet these requirements?

- A. Scrum backlog
- B. Kanban board
- C. Kanban backlog
- D. Active sprints

Correct Answer: B**Section:****Explanation:**

A Kanban board is the best option for Gen to prioritize and triage support requests using drag-and-drop. A Kanban board allows Gen to quickly assign issues to herself or other team members by dragging them to the appropriate column. She can also transition issues to In Progress by moving them across the workflow. Additionally, she can instantly associate issues with Epics by dragging them to the Epic panel on the right side of the board. A Kanban board also provides a visual overview of the current status and progress of the support requests. Reference: Managing Jira Projects Data Center and Server: Certification Bundle, Configuring projects | Administering Jira applications Data Center and ..., [Working with issues | Jira Software Cloud]

QUESTION 12

The release manager is requesting a list of all issues included in a particular sprint. Which report will provide this information?

- A. Control Chart
- B. Release Burndown
- C. Version Report

- D. Sprint Report
- E. Average Age Report

Correct Answer: D

Section:

Explanation:

A Sprint Report is the best report to provide a list of all issues included in a particular sprint. A Sprint Report shows the scope, status, and completion date of each sprint. It also displays a breakdown of the completed, incomplete, and added issues in the sprint. The release manager can easily view the list of incomplete issues in the Issue Navigator by clicking on the View in Issue Navigator link at the bottom of the report. A Sprint Report also helps to track the team's performance and identify any scope changes during the sprint. Reference: Managing Jira Projects Data Center and Server: Certification Bundle, [Sprint Report | Jira Software Cloud]

QUESTION 13

Your team failed to meet their last sprint commitment and you want to investigate further. You need an agile report that:

- * shows you a list of the incomplete issues in the sprint
- * allows you to quickly view that list in the Issue Navigator

Which report meets this need?

- A. Burndown Chart
- B. Control Chart
- C. Cumulative Flow Diagram
- D. Sprint Report
- E. Velocity Chart

Correct Answer: D

Section:

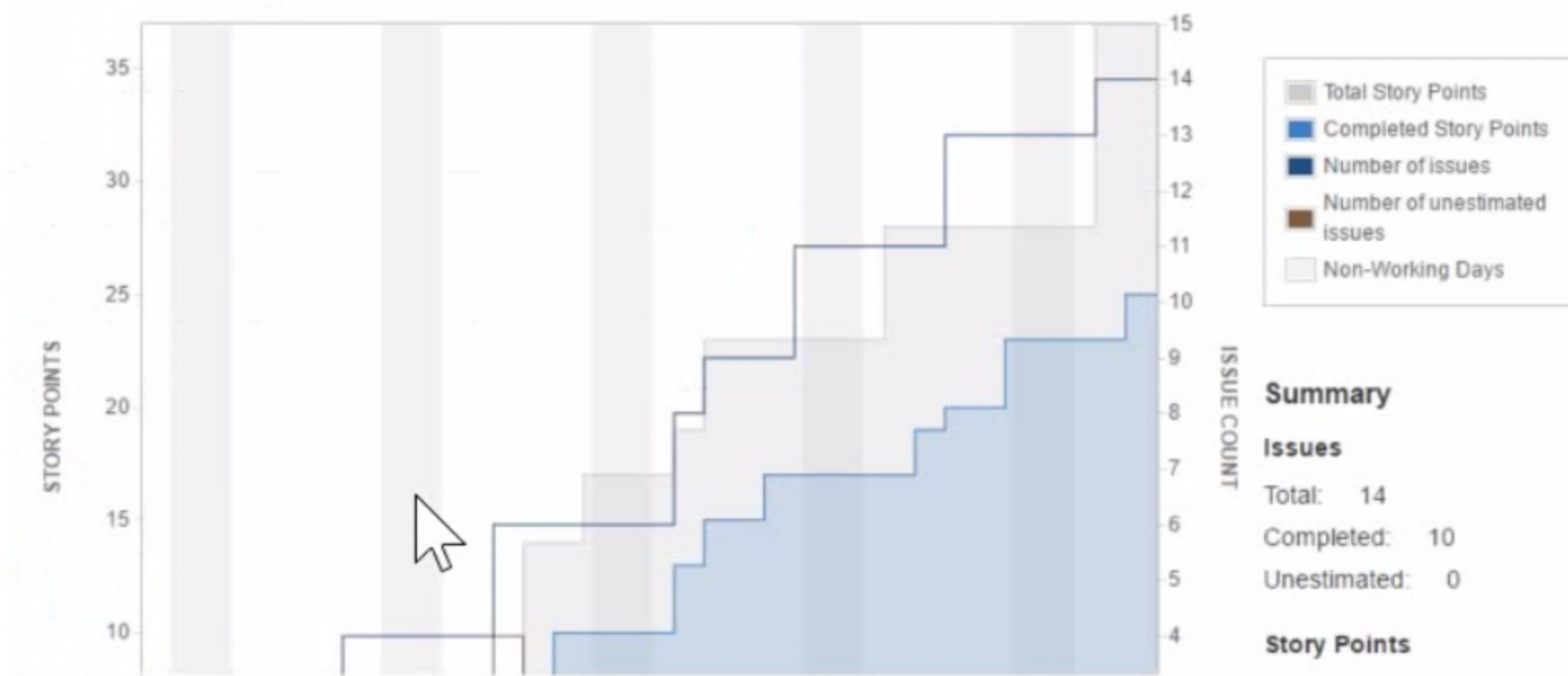
Explanation:

A Sprint Report is also the best report to meet this need. As explained above, a Sprint Report shows a list of the incomplete issues in the sprint and allows you to quickly view that list in the Issue Navigator. A Sprint Report can help you investigate why your team failed to meet their last sprint commitment by showing you how many issues were added or removed during the sprint, how many issues were completed or not completed, and how much work was carried over to the next sprint. Reference: Managing Jira Projects Data Center and Server: Certification Bundle, [Sprint Report | Jira Software Cloud]

QUESTION 14

Analyze the Epic Report shown.

www.VCEplus.io



Identify why the epic completion date is hard to predict.

- A. Most stories aren't estimated until the end of the epic
- B. The configured Working Days for the board are unrealistic.
- C. The team is using issue count for their estimation statistic.
- D. The team adds new stories throughout the epic.

www.VCEplus.io

Correct Answer: D

Section:

Explanation:

The epic completion date is hard to predict because the team adds new stories throughout the epic. This means that the scope of the epic is not fixed and can change over time. The Epic Report shows the progress of an epic by comparing the estimated amount of work to the completed work. The report also shows a projected completion date based on the team's average velocity. However, if the team keeps adding new stories to the epic, the estimated amount of work will increase and the projected completion date will be pushed further. This makes it difficult to plan and deliver the epic within a certain timeframe. Reference: Managing Jira Projects Data Center and Server: Certification Bundle, Epic Report

QUESTION 15

A project was created with a shared configuration. Which two configurations were shared? (Choose two.)

- A. component lead assignments
- B. versions
- C. transition screens
- D. project role membership
- E. project permissions

Correct Answer: C, E

Section:

Explanation:

When a project is created with a shared configuration, it inherits the configurations of an existing project. This includes the workflow, issue types, screens, fields, permissions, notifications, and schemes associated with them.

However, the component lead assignments and versions are specific to each project and are not shared. Therefore, the correct answer is C and E. Reference: Creating a project, Configuring projects

QUESTION 16

You are a project administrator of DEV. Omar is a Jira administrator.

Identify two project settings that Omar can update in DEV but you cannot. (Choose two.)

- A. Notification scheme
- B. Project shortcuts
- C. Key
- D. Description
- E. Name
- F. Versions

Correct Answer: A, C

Section:

Explanation:

As a project administrator of DEV, you can update some project settings such as project shortcuts, description, name, and versions. However, you cannot update the notification scheme or the key of the project, as these are global settings that require Jira administrator permissions. Therefore, the correct answer is A and C. Reference: Managing project permissions, Managing project notifications, Changing the project key

QUESTION 17

A Jira administrator just created a new project based on the 'Task management' project template. Which Jira feature is enabled in this project by default?

- A. Epic issue type
- B. ranking of standard issue types
- C. Issue analysis reports
- D. Release Hub

www.VCEplus.io

Correct Answer: B

Section:

Explanation:

The "Task management" project template is designed for managing simple tasks and tracking progress. By default, this template enables ranking of standard issue types, which allows you to order issues by priority on a board. The other features mentioned in the options are not enabled by default in this template. Therefore, the correct answer is B. Reference: Creating a project, Ranking an issue

QUESTION 18

The team requests that you update the name of your project. What impact will this have on Jira?

- A. The URL for issues will change.
- B. The project key will change.
- C. Issue filters may need to be updated.
- D. Issue search will not find issues from that project until Jira is re indexed.

Correct Answer: C

Section:

Explanation:

Updating the name of your project will not affect the URL for issues, as they are based on the project key, not the name. The project key will also remain unchanged unless you explicitly change it. Issue search will still find issues from that project regardless of the name change. However, issue filters may need to be updated if they use the project name as a criterion. Therefore, the correct answer is C. Reference: Editing a project's details, Changing the project key, Searching for issues using filters

QUESTION 19

You are moving an epic between projects that share an issue type scheme. Which issues are moved along with the epic?

- A. all standard issues in the epic
- B. all standard and sub-task issues in the epic
- C. only Story issues in the epic
- D. all sub-tasks of the epic itself
- E. all issues linked to the epic through issue links

Correct Answer: A

Section:

Explanation:

When you move an epic between projects that share an issue type scheme, all standard issues in the epic are moved along with it. This means that any issue type that is not a sub-task or an epic will be moved to the new project. Sub-task issues in the epic will not be moved unless their parent issues are also in the epic. Story issues in the epic will be moved only if they are standard issue types, not sub-tasks. Issues linked to the epic through issue links will not be moved as they are not part of the epic hierarchy. Therefore, the correct answer is A. Reference: Moving an issue, Working with epics

QUESTION 20

Which statement is definitely true about sub-tasks being used on a Scrum board?

- A. Sub-task estimations are rolled up and displayed as the Original Estimate on the parent card.
- B. Sub-tasks can only be created by board administrators
- C. Sub-tasks can be displayed as cards in the Active sprints view.
- D. Sub-tasks can be displayed as cards in the Backlog view.
- E. Sub-tasks will automatically get resolved when the parent is moved to the Done column.

Correct Answer: C

Section:

Explanation:

Sub-tasks are a type of issue that can be used to break down a parent issue into smaller and more manageable pieces. Sub-tasks can be displayed as cards in the Active sprints view of a Scrum board, which allows you to track their progress and status. However, sub-task estimations are not rolled up and displayed on the parent card, as they use a different field than the parent issue. Sub-tasks can be created by anyone who has the Create Issue permission in the project, not only by board administrators. Sub-tasks cannot be displayed as cards in the Backlog view, as they are only visible under their parent issues. Sub-tasks will not automatically get resolved when the parent is moved to the Done column, as they have their own workflow transitions and conditions. Therefore, the correct answer is C. Reference: [Working with sub-tasks], [Configuring columns]

QUESTION 21

A project uses several issue Types that have different workflows.

Sam can only see some of the issues on the project's Kanban board but sees all of them in the issue search.

Identify a possible reason.

- A. board permissions
- B. column mapping
- C. issue-level security
- D. workflow conditions

Correct Answer: B

Section:

Explanation:

A possible reason why Sam can only see some of the issues on the project's Kanban board but sees all of them in the issue search is that the column mapping of the board does not include all the statuses of the different

workflows used by the issue types. Column mapping determines which statuses are mapped to which columns on a board, and only issues with mapped statuses are displayed on the board. If an issue type has a workflow with a status that is not mapped to any column, then it will not appear on the board. Board permissions, issue-level security, and workflow conditions do not affect the visibility of issues on a board, as they apply to both the board and the issue search. Therefore, the correct answer is B. Reference: [Configuring columns], [Configuring workflows]

QUESTION 22

Your team uses a custom field of type Labels to track keywords associated with incoming requests. Issues can have multiple keywords, and new keywords can be added at any time. They want to see keywords displayed prominently when viewing all cards on a board. Which configuration meets this need?

- A. card layout
- B. swimlanes
- C. card colours
- D. issue detail view

Correct Answer: A

Section:

Explanation:

The best configuration to meet the team's need of displaying keywords prominently when viewing all cards on a board is card layout. Card layout allows you to customize what fields are shown on each card on a board, and you can choose to show any custom field of type Labels on the cards. Swimlanes are used to group issues into horizontal lanes based on certain criteria, such as assignee, priority, or query, but they do not show labels on each card. Card colours are used to highlight issues based on certain attributes, such as issue type, priority, or query, but they do not show labels on each card either. Issue detail view is used to show more information about an issue when you select it on a board, but it does not affect how cards are displayed on the board. Therefore, the correct answer is A. Reference: [Configuring card layout], [Configuring swimlanes], [Configuring card colours], [Using boards]

QUESTION 23

Sam and Jo are product managers responsible for two separate products. Each product has its own Jira project and a corresponding Scrum board. Management requests an integration between the products. Sam and Jo decide to create all the integration-related issues in Sam's project and label them 'integration'. Jo updated his Scrum board's saved filter to include the relevant integration issues from Sam's project. Which statement is definitely true?

- A. All integration issues always appear on top of Jo's backlog.
- B. Changes to the rank of integration issues on Jo's board are reflected on Sam's board.
- C. Jo is unable to rank integration issues created by Sam.
- D. Sam is unable to transition integration issues that were ranked by Jo.
- E. Integration issues can only be ranked on Sam's board.

Correct Answer: B

Section:

Explanation:

The statement that is definitely true is that changes to the rank of integration issues on Jo's board are reflected on Sam's board. This is because ranking is a global attribute that affects how issues are ordered across projects and boards based on their relative priority. When Jo updates his Scrum board's saved filter to include integration issues from Sam's project, he can rank them along with his own issues on his board. These changes will also affect how these issues are ranked on Sam's board, as they share the same rank field value. The other statements are not necessarily true or false, as they depend on other factors such as permissions, workflow configurations, or board settings. Therefore, the correct answer is B. Reference: [Ranking an issue], [Configuring filters]

QUESTION 24

A team currently uses a single project to track both features and tasks. They will be adopting agile practices, as follows:

- * Features will be developed during three week iterations.
- * Tasks will be handled based on priority and rank and released incrementally as needed.

they want to use agile boards with minimal disruption to their current configuration. Which solution will meet their requirements?

- A. a Kanban board in the current project with separate swimlanes per issue type
- B. two Scrum boards for the current project, one for each issue type
- C. a Scrum board in the current project with two quick fillers to show each issue type separately
- D. a second project for tasks with a shared configuration and separate boards per project
- E. a Kanban board for tasks and a Scrum board for features in the current project

Correct Answer: E

Section:

Explanation:

The solution that will meet the team's requirements of using agile boards with minimal disruption to their current configuration is to use a Kanban board for tasks and a Scrum board for features in the current project. This way, they can use different agile methodologies for different issue types without creating a new project or changing their existing configuration. They can use a Kanban board for tasks to handle them based on priority and rank and release them incrementally as needed. They can use a Scrum board for features to develop them during three week iterations with sprints and backlogs. The other solutions are either not feasible or not optimal for their needs. Therefore, the correct answer is E. Reference: [Creating a board], [Using a Scrum board], [Using a Kanban board]

QUESTION 25

Your team is using a Scrum board and has many issues planned for future sprints. You need to configure a secondary board that

- * excludes those planned issues from the board but not from the reports
- * hides issues in real time when users select multiple conditions

Which two board configurations satisfy the requirements? (Choose two.)

- A. swimlanes
- B. board sub-filter
- C. board filter
- D. column constraint
- E. quick filters

www.VCEplus.io

Correct Answer: B, E

Section:

Explanation:

To exclude the planned issues from the board but not from the reports, you need to use a board sub-filter. A board sub-filter is an additional JQL query that is applied to the board filter to further refine the issues displayed on the board. The sub-filter does not affect the reports, which are based on the board filter only. To hide issues in real time when users select multiple conditions, you need to use quick filters. Quick filters are buttons that allow users to dynamically change the view of the board by applying one or more JQL queries. Users can select or deselect quick filters to show or hide issues that match the criteria. Reference: Configuring filters, Configuring quick filters

QUESTION 26

Quang can transition issues from Resolved to Done using the workflow button on issues in his project. However, he cannot drag them from Resolved to Done on the project's Kanban board Identify a possible reason why.

- A. Quang lacks a project permission.
- B. Quang is not a board administrator.
- C. The statuses are mapped to the same column.
- D. The board has a sub-filter configured

Correct Answer: C

Section:

Explanation:

If Quang can transition issues from Resolved to Done using the workflow button on issues in his project, but cannot drag them from Resolved to Done on the project's Kanban board, a possible reason is that the statuses are mapped to the same column. The columns on a Kanban board represent the stages of work in a project. Each column can have one or more statuses mapped to it. To move an issue from one column to another, you need to drag and drop it to a column that has a different status mapped to it. If the statuses are mapped to the same column, you cannot move the issue by dragging it on the board, but you can still use the workflow button to

change its status. Reference: Configuring columns, Moving an issue

QUESTION 27

The MR manager is unsure whether she wants a Scrum or Kanban board for her project. Identify one difference between the boards.

- A. Only Kanban boards support column constraints.
- B. Only Scrum boards support a card layout for backlog view.
- C. Only Kanban boards can display Days in column
- D. Only Scrum boards have a sub filter
- E. Only Scrum boards support selecting an estimation method.

Correct Answer: E

Section:

Explanation:

One difference between Scrum and Kanban boards is that only Scrum boards support selecting an estimation method. Estimation is a way of measuring how much work is required to complete an issue or a sprint. Scrum boards allow you to choose between story points, original time estimate, or issue count as estimation methods. Kanban boards do not have estimation methods, as they focus on managing the flow of work rather than planning sprints. Reference: Configuring estimation and tracking, Estimating an issue




QUESTION 28

An issue was created with the following attributes:

- * Issue type: Story
- * Priority: Blocker
- * Labels: Tools, DevOps
- * Reporter: A.Grant

An excerpt of the board's swimlane configuration is shown.

www.VCEplus.io

 Expedite	priority = Blocker
 Stories	type = Story
 Internal stories	labels = "Tools" AND issuetype = Story

In which swimlane will the issue appear?

- A. Change requests
- B. Expedite
- C. Internal stories
- D. Everything Else
- E. Stories

Correct Answer: B

Section:

Explanation:

The issue will appear in the Expedite swimlane, because it matches the query priority = Blocker. Swimlanes are used to group issues on the board based on a common attribute, such as assignee, epic, or a custom query. The board's swimlane configuration shows that the first swimlane is Expedite, which has the query priority = Blocker. This means that any issue with a blocker priority will be placed in this swimlane, regardless of its other attributes. The other swimlanes have different queries that do not match the issue's attributes, such as type, labels, or reporter. Therefore, the issue will not appear in those swimlanes. The last swimlane is Everything Else, which is the default swimlane for any issue that does not match any of the previous queries. However, since the issue matches the Expedite query, it will not fall into this swimlane either. Hence, the correct answer is B. Reference: [Configuring swimlanes], [Using swimlanes]

QUESTION 29

Your Scrum board has the following filter query:

project in (ENG. DEV) and type in (Bug. Task) ORDER BY Priority ASC

You have the necessary permissions but you are unable to drag an issue into a future sprint in the backlog.

- A. Identify the reason.
- B. The filter should be in DESC order.
- C. Stories are missing from the query.
- D. Ranking is disabled.
- E. The query should only have one project.
- F. The active sprint has not yet been completed.

Correct Answer: D

Section:

Explanation:

The reason why you are unable to drag an issue into a future sprint in the backlog is that ranking is disabled. Ranking is a feature that allows you to order issues based on their relative priority or importance. Ranking is enabled by adding "ORDER BY Rank ASC" or "ORDER BY Rank DESC" to your board filter query. Ranking is required for Scrum boards, as it determines the order of issues in your backlog and sprints. If ranking is disabled, you cannot drag and drop issues in your backlog or plan future sprints. Reference: Ranking an issue, Configuring filters

www.VCEplus.io

QUESTION 30

You are viewing a board that displays stories across multiple projects. You want to see a grouping of stories without epics. Which swimlane selection will achieve this?

- A. Query: epic is EMPTY
- B. Stories
- C. Query: Type = Epic
- D. Projects
- E. Epics

Correct Answer: A

Section:

Explanation:

Swimlanes are a way of grouping issues on a board based on certain criteria, such as assignee, priority, query, or epics. If you want to see a grouping of stories without epics, you can use a query swimlane with the condition epic is EMPTY, which will show only issues that are not part of any epic. The other options will either show epics or not group stories at all. Therefore, the correct answer is A. Reference: [Configuring swimlanes], [Advanced searching - fields reference]

QUESTION 31

You want to remove some epics from your personal Scrum board, without impacting any other boards. Identify the correct solution.

- A. Exclude them via a quick filter.
- B. Mark them as Done via the Epics panel
- C. Exclude them via the board filter

- D. Exclude them via the board sub filter.
- E. Transition them into an unmapped status.

Correct Answer: D

Section:

QUESTION 32

A product owner is responsible for two scrum teams. He needs to:

- * see a snapshot displaying key sprint information like time elapsed and percentage of scope change
- * monitor the overall progress of the next release to determine if it will ship on time

Which two gadgets will show this information? (Choose two.)

- A. Version Report
- B. Issues in progress
- C. Sprint Health Gadget
- D. Activity Stream
- E. Projects
- F. Filter Results

Correct Answer: A, C

Section:

Explanation:

The Version Report and the Sprint Health Gadget are two gadgets that can show the information that the product owner needs. The Version Report shows the progress of a version by comparing the estimated amount of work to the completed work. The report also shows a projected release date based on the team's average velocity. The product owner can use this report to monitor the overall progress of the next release and determine if it will ship on time. The Sprint Health Gadget shows a snapshot of key sprint information such as time elapsed, percentage of scope change, sprint goal, and team members' availability. The product owner can use this gadget to see how each scrum team is performing in their current sprint and identify any issues or risks. Reference: Managing Jira Projects Data Center and Server: Certification Bundle, Version Report, Sprint Health Gadget

QUESTION 33

The head of customer service wants to identify potential bottlenecks in the support workflow of her teams in the last three months. Which report provides this information?

- A. Created vs. Resolved Issues Report
- B. Time Since Issues Report
- C. Cumulative Flow Diagram
- D. Resolution Time Report
- E. Average Age Report

Correct Answer: C

Section:

Explanation:

The Cumulative Flow Diagram is the report that provides the information that the head of customer service wants. The Cumulative Flow Diagram is a tool that visualizes the quantity and distribution of work items along different stages of a process. The report shows how many work items are in each stage at any given time, and how they flow from one stage to another. The report can help identify potential bottlenecks in the support workflow by showing where work items accumulate or stagnate over time. For example, if the report shows a sudden increase or a wide band of work items in the "Waiting for Customer" stage, it may indicate that the customers are not responding quickly enough or that the support team is not following up effectively. The report can also help monitor the overall progress and performance of the support teams by showing the total number of work items created, resolved, and remaining over time. Reference: Managing Jira Projects Data Center and Server: Certification Bundle, Cumulative Flow Diagram

QUESTION 34

A Scrum team working on multiple epics complains that they are constantly being pushed to complete more work than they think can be completed. Apparently, the product owner has constantly overloaded each of the past 8 sprints. Which single report can instantly prove their statement?

- A. Velocity Chart
- B. Cumulative Flow Diagram
- C. Sprint Report
- D. Control Chart
- E. Epic Burndown

Correct Answer: A

Section:

QUESTION 35

Kim needs a single dashboard gadget that displays the following information for issues in her project:

- * the total count of all issues
- * the total count of each issue type
- * the distribution of each issue type as a percentage
- * a graphical chart display of that percentage

Which gadget meets this need?

- A. Heat Map
- B. Two Dimensional Filter Statistics
- C. Filter Results
- D. Issues in progress
- E. Issue Statistics

Correct Answer: E

Section:

Explanation:

The gadget that meets Kim's need is the Issue Statistics gadget. This gadget displays the collection of issues returned from a filter, broken down by a field. Kim can configure the gadget to use her project as the filter, and the issue type as the field. The gadget will then show the following information for issues in her project:

the total count of all issues

the total count of each issue type

the distribution of each issue type as a percentage

a graphical chart display of that percentage

The other gadgets are not suitable because:

The Heat Map gadget displays issues from a project or filter, grouped by a statistic type, in a heat map format. Issues can be grouped by any statistic type (e.g. Status, Priority, Assignee, etc). However, this gadget does not show the total count of all issues, nor the distribution of each issue type as a percentage.

The Two Dimensional Filter Statistics gadget displays issues from a filter in a table format, where each cell shows the number of issues for a given combination of two statistics types (e.g. Status vs Priority, Assignee vs Issue Type, etc). This gadget does not show the total count of all issues, nor a graphical chart display of that percentage.

The Filter Results gadget displays the results of an issue filter on the dashboard. This gadget does not show any summary or breakdown of the issues by any field, nor a graphical chart display of that percentage.

The Issues in Progress gadget displays all issues that are in progress and assigned to the user viewing the dashboard. This gadget does not show any information about other issues or issue types in the project, nor a graphical chart display of that percentage.

QUESTION 36

You just started working as a scrum master in the Engine team.

The first thing you do is to analyze the Velocity Chart of the team's scrum board as shown

www.VCEplus.io



- A. Issues not completed in Combo Sprint 3 were completed in Combo Sprint 4.
- B. Combo Sprint 1 has been deleted after it was completed.
- C. There was a scope change during Combo Sprint 4.
- D. The team only completed 2 out of 6 Story Points in Combo Sprint 3.
- E. All issues in Combo Sprint 3 were estimated before the sprint was started.

www.VCEplus.io

Correct Answer: C

Section:

Explanation:

The Velocity Chart shows the amount of work completed by a team in each sprint. The green area represents the completed work, and the gray area represents the estimated work. The difference between the green and gray areas indicates a scope change, which means that issues were added or removed from the sprint after it started. In Combo Sprint 4, we can see that the green area is larger than the gray area, which means that more work was completed than estimated. This implies that some issues were added to the sprint after it started, or that some issues were re-estimated with higher values. Therefore, option C is correct. Reference: Velocity Chart, Managing Jira Projects Data Center and Server: Certification Bundle

QUESTION 37

Development team A is consistently overestimating the work they can complete per sprint. They want to be able to compare work committed and work completed in sprints over time. Which single report provides this information?

- A. Control Chart
- B. Sprint Report
- C. Cumulative Flow Diagram
- D. Created vs Resolved Issues Report
- E. Velocity Chart

Correct Answer: E

Section:

Explanation:

The Velocity Chart is the best report to compare work committed and work completed in sprints over time. It shows the average amount of work that a team can complete in a sprint, based on the historical data of previous

sprints. It also shows how much work was planned and how much was actually completed in each sprint. By looking at the Velocity Chart, a team can see if they are overestimating or underestimating their capacity, and adjust their planning accordingly. Therefore, option E is correct. Reference: Velocity Chart, Managing Jira Projects Data Center and Server: Certification Bundle

QUESTION 38

Your team has been completing work on a fully estimated epic in each of the last four sprints. Your product owner wants you to predict how many additional sprints will be needed to complete it. Which single report can provide the information?

- A. Epic Burndown
- B. Sprint Report
- C. Release Burndown
- D. Epic Report

Correct Answer: A

Section:

Explanation:

An epic burndown chart shows the progress towards completing an epic over time. It is useful for tracking how much work is left to be done and predicting when it will be completed. The epic burndown chart is based on the estimation statistic that is configured for the board (either story points or issue count) and shows the total amount of work remaining in the epic at the end of each sprint. You can use this chart to estimate how many additional sprints will be needed to complete an epic. Reference: <https://support.atlassian.com/jira-software-cloud/docs/view-and-understand-the-epic-burndown-chart/>

QUESTION 39

Paul and Tessa are in the Auditors role of every project. You need to write a JQL query that shows Issues reported by either of them that are still unassigned. Select the correct JQL query.

- A. Reporter IN (Paul, Tessa) AND Assignee IS EMPTY
- B. Reporter IN (Auditors) AND assignee - EMPTY
- C. Reporter IN membersOfCAuditors') AND assignee = NULL
- D. Reporter IS Paul OR Reporter IS Tessa AND Assignee IS NULL
- E. (Reporter - Paul OR Reporter -- Tessa) AND Assignee - Unassigned

Correct Answer: A

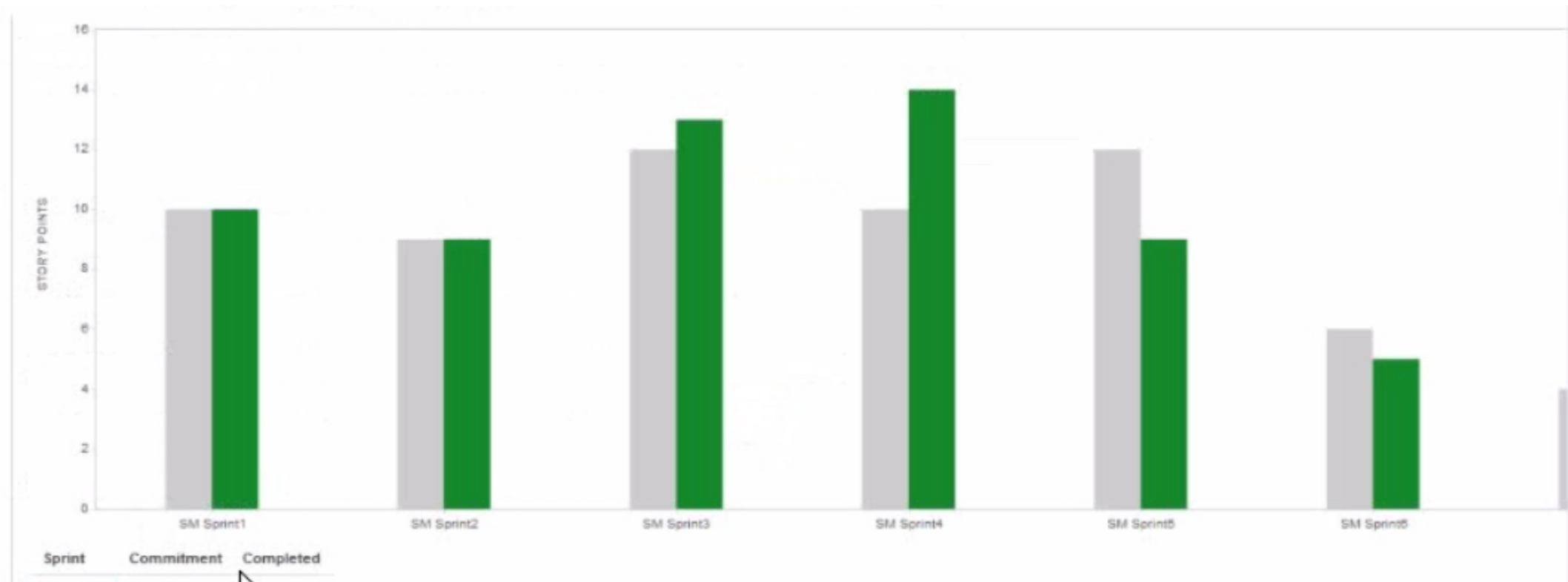
Section:

Explanation:

The correct JQL query to find issues reported by either Paul or Tessa that are still unassigned is: Reporter IN (Paul, Tessa) AND Assignee IS EMPTY. This query uses the IN operator to specify a list of values for the Reporter field, and the IS EMPTY operator to check if the Assignee field has no value. The other options are incorrect because they use invalid syntax or operators, such as "'-", NULL, or Unassigned. For more information on JQL syntax and operators, see [JQL operators and Use advanced search with Jira Query Language \(JQL\)](#). Reference: [JQL operators, Use advanced search with Jira Query Language \(JQL\)](#)

QUESTION 40

You want to report on your team's performance to the stakeholders. View one of the reports for your team:



Based only on the report shown, which statement about your teams performance is definitely true?

- A. Your team is not estimating their work accurately.
- B. Your team sometimes commits more work than it can complete in an iteration.
- C. Your team is committing unestimated work to an iteration.
- D. Scope change is affecting the team's ability to complete work on time.
- E. Your team is using sprint duration inconsistently

www.VCEplus.io

Correct Answer: B

Section:

Explanation:

Based on the report shown, which is a Velocity Chart, the only statement that is definitely true about the team's performance is that they sometimes commit more work than they can complete in an iteration. This can be seen by comparing the green bars (completed work) and the gray bars (estimated work) in each sprint. For example, in Sprint 4, the team committed 10 story points but only completed 8 story points. The other statements are not necessarily true based on the report alone. For example, the team may be estimating their work accurately, but facing other challenges or impediments that prevent them from completing their work on time. Or, the team may not be committing unestimated work to an iteration, but rather re-estimating some issues during the sprint. Or, scope change may not be affecting the team's ability to complete work on time, but rather reflecting changes in priorities or requirements. Or, the team may be using sprint duration consistently, but varying the amount of work they commit to each sprint based on their capacity or velocity. For more information on how to interpret and use the Velocity Chart, see [Velocity Chart](#). Reference: [Velocity Chart](#)

QUESTION 41

You are responsible for three software products with individual release cycles.

Each product is managed in a different project.

Which report can provide an instant progress overview of all fix versions across all projects?

- A. Release Burndown
- B. Pie Chart Report
- C. Version Workload Report
- D. Version Report
- E. Single Level Group By Report

Correct Answer: B

Section:

Explanation:

The report that can provide an instant progress overview of all fix versions across all projects is the Pie Chart Report. This report allows you to create a pie chart based on any statistic type, such as Fix Version, Project, Issue Type, etc. You can use this report to compare the relative proportions of issues in different fix versions across different projects. For example, you can create a pie chart based on the Fix Version statistic type, and select all the projects that you are responsible for. This will show you how many issues are assigned to each fix version in each project, and what percentage they represent of the total issues. You can also filter the issues by status, priority, assignee, or any other criteria. This report can help you monitor the progress of your releases and identify any potential risks or delays. To generate a Pie Chart Report, follow these steps1:

Navigate to the project that you want to report on.

From the project sidebar, select Reports.

Select Pie Chart Report from the list of reports.

Select the statistic type that you want to base your pie chart on. In this case, select Fix Version.

Select the projects that you want to include in your report. You can select multiple projects by holding down the Ctrl key (Windows) or Command key (Mac) while clicking on the project names.

Optionally, select a filter to narrow down the issues that you want to include in your report. You can use an existing filter or create a new one.

Click View to generate the report.

You can also access the Pie Chart Report from your dashboard by adding the Jira Chart gadget2. This gadget allows you to display any Jira report on your dashboard. To add the Jira Chart gadget to your dashboard, follow these steps2:

Navigate to your dashboard and click Add gadget.

Search for Jira Chart and click Add gadget.

Configure the gadget settings as follows:

Select Pie Chart as the chart type.

Select the project or filter that you want to use as the data source.

Select Fix Version as the statistic type.

Optionally, select a series to further break down the data by another statistic type, such as Status or Priority.

Click Save.

You can also edit or delete the gadget at any time by clicking on the menu icon at the top right corner of the gadget.

www.VCEplus.io