

CertKiller.3605,153.Q&A

VCEplus.com

CERTKILLER

3605

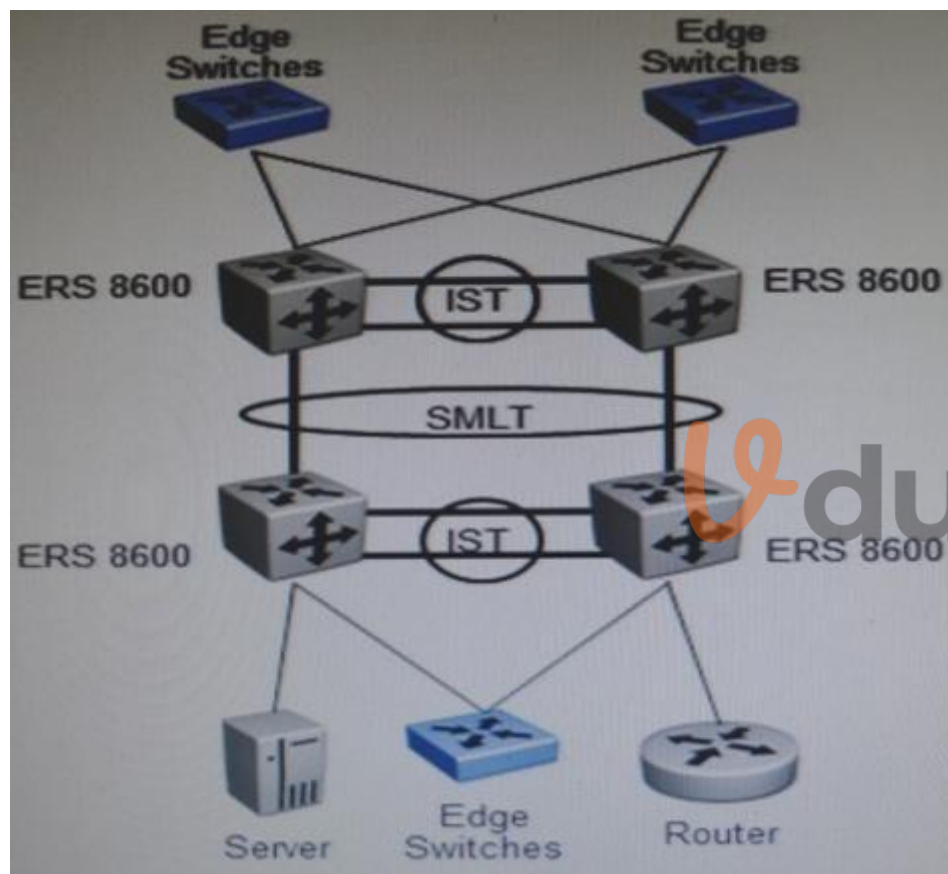
Avaya Ethernet Routing Switch Implementation and Maintenance

- ✦ I have correct many of questions answers. If there is any more then update this vce and re-upload.
- ✦ Modified few questions, fixed few spelling mistakes and typos.
- ✦ This is the best VCE I ever made. Try guys and if any suggestion please update this.
- ✦ Added Explanations and Exhibits most of the questions.
- ✦ 100% Valid in US, UK, Australia, India and Emirates. All my friends in group have these same questions.

Exam A

QUESTION 1

Refer to the exhibit.



A campus network has been established with four Ethernet Routing Switch (ERS) 8600 switches in a switch cluster, two pairs with an Inter Switch Trunks (IST) running Split Multi Link Trunk (SMLT) and Routed Split Multi-Link Trunking (RSMLT). The traffic filters are required to block specific source IP addresses to be forwarded through the core.

With reference to the exhibit, how should these filters be set up?

- A. Configure the filters on the 1ST first before any other ports.
- B. Apply the filters to all ports that receive traffic from outside the immediate switch cluster.
- C. Configure the filters on the ports first and then the IST.
- D. Configure and apply all the filters on the two core IST links only

Correct Answer: B

Section: (none)

Explanation

Explanation/Reference:

QUESTION 2

Which statement describes a step in provisioning SPBM in an enterprise network?

- A. Configure IP addresses on the core links.
- B. Enable SPBM and IS-IS globally on all nodes and on the core facing links.
- C. Configure the MAC table.
- D. Configure L2 and L3 VSNs on the core SPBM nodes.

Correct Answer: B

Section: (none)

Explanation

Explanation/Reference:

QUESTION 3

Which VLAN/VLANs should be included on the Inter Switch Trunks (IST) for a proper functioning split Multi-Link (SMLT) configuration?

- A. Only VLAN 101
- B. Only VLAN 1 and the IST
- C. Only the VLANs that are also included on the SMLT/SLT uplinks3
- D. The IST VLAN and all the VLANs that are included on all SMLT/SLT links

Correct Answer: D

Section: (none)

Explanation



Explanation/Reference:

QUESTION 4

A technician wants to control the routes being added to the routing table from the BGP routing table. Which statement describes how to do this?

- A. BGP accept filters are applied to all routes from received by BGP peers.
- B. BGP accept filters are applied only to external route information.
- C. BGP accept filters are applied to all incoming and outgoing ports.
- D. BGP adds all new priority routes to the routing table.

Correct Answer: A

Section: (none)

Explanation

Explanation/Reference:

QUESTION 5

When multiple VLANs are used, Dynamic Host Control Protocol (DHCP) relay is required to get the DHCP information from the end user VLAN DHCP server. Which statement about how to enable DHCP relay is true?

- A. The physical VLAN IP address is configured as the DHCP relay agent on each VLAN requiring a DHCP relay.
- B. The IP address of the DHCP server is configured as the relay agent globally on all switches that do not directly attach to the DHCP server.
- C. The MAC address of the DHCP server configured as the DHCP relay agent on each VLAN requiring the DHCP relay agent.
- D. The DHCP relay is configured globally and is automatically applied to all VLANs requiring a DHCP relay.

Correct Answer: A

Section: (none)

Explanation

Explanation/Reference:

well modified.

QUESTION 6

Which feature can be used on Split Multi-Link Franking (SMLT) with a SoftDown option?

- A. Extended control packet limit (ext-CP)

- B. Discard untagged frames
- C. Simple Loop Prevention Protocol (SLPP)
- D. Virtual Link Aggregation Protocol (VLACP)

Correct Answer: A

Section: (none)

Explanation

Explanation/Reference:

QUESTION 7

You are configuring a QoS Policy on an ERS RS or 8800 module to police the ingress data rate on a port with the following ACLI command on the interface level: qos if-policer police-rate 10000. What other two ACLI commands are required on the edge interface? (Choose two.)

- A. (config)#interface qos enable.
- B. (config-if)#enable-diffserv enable.
- C. (config-if)#access-diffserv enable.
- D. (config-if)#no core-diffserv enable.

Correct Answer: BC

Section: (none)

Explanation

Explanation/Reference:



QUESTION 8

To confirm that routed split Multi-Link Trunking (RSMLT) will work on a set of VLANs, which network design aspect should be considered?

- A. RSMLT is enabled on each SMLT VLAN on which the function is required.
- B. RSMLT is enabled on the VLAN group.
- C. Router 1 always owns the network.
- D. RSMLT is enabled on all SMLT VLANs.

Correct Answer: A

Section: (none)

Explanation

Explanation/Reference:

QUESTION 9

A technician is configuring 802.1Q tagging, Virtual Link Aggregation Control Protocol (VLACP) with short timeout, and untagged frames to be discarded. Which part of the network is being configured?

- A. IST
- B. The out-of-band management port
- C. The edge access ports
- D. The uplinks

Correct Answer: D

Section: (none)

Explanation

Explanation/Reference:

QUESTION 10

A customer has implemented an ERS 8000 solution and deployed the configuration and Orchestration Manager (COM). Which tool from within COM is used to set up and manage spanning tree groups?

- A. Global Manager
- B. VLAN Manager
- C. Security Manager
- D. VSN Manager

Correct Answer: B

Section: (none)

Explanation

Explanation/Reference:

QUESTION 11

When configuring Single Link Trunking (SLT) or Split Multi-Link Trunking (SMLT), what can be done to facilitate easily adding more VLANs to the network without impacting traffic?

- A. 802.1Q-tag uplinks.
- B. Disable STP on the ports.
- C. Index the ports.
- D. Use redundant MLTs.

Correct Answer: A

Section: (none)

Explanation

Explanation/Reference:

QUESTION 12

An existing enterprise network is using Ethernet Routing Switch (ERS) 8600 switches in the campus core. It has been determined that 10 Gigabit links are required to replace the existing 1 gigabit uplinks will affect its connections on each of the ERS 8600 switches. Which statement describes how to accomplish this requirement in each ERS 8600 chassis?

- A. Replace the two existing switch fabric modules with 8394SF systems.
- B. Replace the two existing switch fabric modules with 8692SF and Supermez2
- C. Replace the two existing 8616SXE modules with 8612XLRS modules.
- D. Replace the six 8683XLK modules with 8612XLRS.

Correct Answer: BC

Section: (none)

Explanation

Explanation/Reference:

QUESTION 13

Which two functions describe VPFM? (Choose two.)

- A. It is a network health at a glance tool.
- B. It can correlate faults, traps, and provide notification.
- C. It is another term for the SNMP credential.
- D. It is a device configuration tool.

Correct Answer: AB

Section: (none)

Explanation

Explanation/Reference:

QUESTION 14

RSMLT Edge is enabled globally on two ERS 8800 switches. After recovering from a power outage some clients cannot communicate. A technician determined that only one of the core switches has recovered.

What should the technician check to ensure that this loss of communication does not occur in the event of a future power outage or other failure?

- A. Turn off the Hold Up timer on both core switches.
- B. Increase the Hold Up Timer to 9999 per VLAN for RSMLT Edge support.
- C. Re-enable RSMLT Edge on each of the VLANs on both switches.
- D. Set the VLAN to copy RSMLT info from a similarly configured VLAN.

Correct Answer: B

Section: (none)

Explanation

Explanation/Reference:



QUESTION 15

Which set of procedures will upgrade the boot monitor on an Ethernet Routing Switch (ERS) 8600 with a single 8692SF module?

- A. Copy the new image to flash.
Activate the new image with SF module in service.
- B. Copy the new image to flash.
Boot the new image.
- C. Copy the new image to flash.
Modify the boot choice for run-time change.
Activate the new image SF module in service.
- D. Copy the new image to flash.
Modify the boot choice for run-time image.
Boot the new image.

Correct Answer: B

Section: (none)

Explanation

Explanation/Reference:

QUESTION 16

The ERS 8000 backplane hosts an EEPROM for storage of up to 4096 MAC addresses. The MAC addresses are automatically used up as they are assigned to which three of the following?

- A. Switch physical ports
- B. Multi-Link Trunking ports.
- C. Multi-Link Trunking groups.
- D. IPX interfaces.
- E. VLANs.

Correct Answer: ACE

Section: (none)

Explanation

Explanation/Reference:



QUESTION 17

The Ethernet Routing Switch (ERS) 8600 supports the feature IP VPN-Lite that does not require the use of an MPLS network. Which function does the ERS 8600 as a Provider Edge (PE) perform for IP VPN-Lite?'

- A. The PE uses the Virtual Routing Forwarding (VRF) instances to provide traffic separation.
- B. The PE provides route exchange with remote PE devices using OSPF.
- C. The PE adds a shim header to the Ethernet header specifying which network the packet is crossing.
- D. The PE incorporates Label Distribution Protocol across the core network to connect remote PE devices.

Correct Answer: A

Section: (none)

Explanation

Explanation/Reference:

QUESTION 18

A customer is upgrading an existing ERS 8610 with the 8692SF to software version 7.x.

Which statement regarding the upgrade is correct?

- A. The customer must upgrade the 8692SF to an 8893SF for software release 7.x.
- B. The customer can run 7.x with the existing 8692SF, although some features will be disabled.
- C. The customer can add the SuperMezz module to the 8692SF and run release 7.x.
- D. The customer must upgrade to an ERS 8810 chassis to run software release 7.x.

Correct Answer: C

Section: (none)

Explanation

Explanation/Reference:

up-to-date.

QUESTION 19

A technician is adding the Virtual link Aggregation Control Protocol (VLACP) configuration to a Converged Campus Solution where all Ethernet Routing Switches (ERSs) are directly connected without intermediary WAN transport devices. What are two recommended configuration tasks? (Choose two.)

- A. Configure all links to use the same timeout value.
- B. For the Inter Switch Trunks (1ST) links, configure the long time-out value.
- C. For the SMLT links, configure the long timeout value.
- D. Configure all links to use a global reserved multicast MAC address for VLACP messages.

Correct Answer: BD

Section: (none)

Explanation

Explanation/Reference:

QUESTION 20

A technician discovers that an Ethernet Routing Switch (ERS) 8300 cat5e copper link is intermittent. The link connects a distant workstation to 8348GTX port 6/2. The cable path is undetermined at this point and it is suspected to traverse many patch panels. How can the ERS 8300 Time Domain reflectometer tool be of help in this situation?

- A. The Virtual Circuit Test command config ethernet 6/2 vct test can detect opens, shorts, bad terminations.
- B. The virtual circuit Repair command config ethernet 6/2 vct repair can detect the bad cable pairs and repair the cable by moving data to the good cable pairs.
- C. The Virtual Circuit Echo command config ethernet 6/2 vct echo can detect the bad cable pairs only when connected to another ERS 8300.
- D. The Virtual Circuit Detect command config ethernet 6/2 vct detect can detect how many patch panels are used between the device and switch and provide a

percentage of dropped packets.

Correct Answer: A

Section: (none)

Explanation

Explanation/Reference:

QUESTION 21

Traceout allows a route to be traced to a network using an Ethernet Routing Switch (ERS) 8600 CLI command. In the command output, the possible range of `w' values is 1-255.

The `w' value represents wait time for what?

- A. Start of command execution
- B. Time to live
- C. Per probe
- D. Completion of traceout report

Correct Answer: C

Section: (none)

Explanation

Explanation/Reference:



QUESTION 22

What is Enterprise Policy Manager (EPM) used for in an Enterprise network?

- A. to manage traffic prioritization and network access security for business applications
- B. as an alternative to EA servers
- C. to distribute control of packet classification for resiliency and efficiency
- D. to assign user role attributes on the RADIUS server

Correct Answer: A

Section: (none)

Explanation

Explanation/Reference:

QUESTION 23

When multiple VLANs are used, Dynamic Host Control protocol (DHCP) relay is required to get the DHCP information from the end user VLAN to the DHCP server. Which statement about how to enable DHCP relay for a VLAN is true?

- A. The physical VLAN IP address is used as the DHCP relay agent.
- B. The IP address of the DHCP relay agent is used.
- C. The IP address of the core server VLAN is used
- D. The virtual VLAN IP address is used as the DHCP relay agent.

Correct Answer: D

Section: (none)

Explanation

Explanation/Reference:

QUESTION 24

The trace level 9 3 command accomplish?

- A. It captures BGP events at a terse level.
- B. It captures packets copied to the CPU at a verbose level.
- C. It shows CPU utilization.
- D. It captures RCC IP events at verbose level.

Correct Answer: B

Section: (none)

Explanation

Explanation/Reference:

QUESTION 25

One of the benefits of the Ethernet Routing switch (ERS) 8300 switch is its ability to provide power-over-Ethernet (PoE). When implementing PoE on the ERS 8300 there are certain power supply requirements to consider. The 8301AC produces 1140W and 1770W and the 8302AC produces 850W and 1400W depending on the input voltage for both cases.

If there are eight 8648TX-PWR modules in a chassis, each needing 200W for Powered Devices (PI)) which power supply configuration is recommended?



- A. One 8301AC power supply with 240VAC input voltage
- B. Two 8302AC power supplies with 120VAC input voltage
- C. Three 83CAC power supplies with 240VAC input voltage
- D. Two 8301AC and one 8302Ac for redundancy with 240VAC input voltage

Correct Answer: C

Section: (none)

Explanation

Explanation/Reference:

QUESTION 26

When configuring an Ethernet Routing Switch (ERS) 8600 redundant Installation for warm standby, which protocol is used to give the fastest recalculation of large layer 3 topology by the standby CPU, after a Master CPU failure?

- A. STP
- B. Rip
- C. OSPF
- D. BGP



Correct Answer: C

Section: (none)

Explanation

Explanation/Reference:

QUESTION 27

Fn Ethernet Routing Switch (ERS) 8300 configurations, which service class ensures that protocol updates such as RIP and OSPF are able to get out of a heavily congested switch?

- A. Bronze
- B. Standard
- C. Network Control
- D. Premium Control

Correct Answer: C

Section: (none)

Explanation

Explanation/Reference:

QUESTION 28

An Information Technology organization needs to determine whether they should upgrade their existing Routing Switch (ERS) 8600 switches to release 5.0. Each chassis currently has both 8648GTR 8648TX modules. One of the features that the company requires is the ability to perform port mirroring on multiple ports per module at a time.

What should be done to meet their port mirroring requirement when upgrading to software release 5.0?

- A. Replace the existing modules with 8648GTRS modules,
- B. Upgrade to ERS 8600 Release 5.0 without any hardware upgrade.
- C. Replace the existing 8648TX modules with ERS 8648TXE for egress mirroring.
- D. Recommend other means to capturing traffic.

Correct Answer: A

Section: (none)

Explanation

Explanation/Reference:



QUESTION 29

Before enabling IP Source Guard through Device Manager, which two conditions must be met on the system (Choose two)

- A. Dynamic Host control Protocol (DHCP) snooping must be enabled globally
- B. EAPOL must be enabled.
- C. The bsSourceGuardConfigMode MIB object must be removed.
- D. The port is an untrusted DHCP snooping and dynamic ARP Inspection port

Correct Answer: AD

Section: (none)

Explanation

Explanation/Reference:

QUESTION 30

A campus network requirement is to introduce Virtual Routing and Forwarding (VRF) in the existing Ethernet Routing Switch (ERS) 8600-based core. The technician has to configure VRF on the ERS 8600. Which statement represents the order for configuring a new VRF?

- A. Create a new VLAN, add an IP address, create a VRF, and move the VLAN to the new VRF
- B. Create a VRF, add an IP address, create a new VLAN, and move the VLAN to the new VRF
- C. Create a VRF, create a new VLAN, add an IP address, and move the VLAN to the new VRF
- D. Create a VRF, create a new VLAN move the VLAN to the new VRF, and add an IP address

Correct Answer: D

Section: (none)

Explanation

Explanation/Reference:

QUESTION 31

An existing enterprise network is using Ethernet Routing Switch (ERS) 8600 switches in the campus core. It has determined that 10 Gigabit links are required to replace the existing 1 Gigabit links 1 to the closest. This will affect 18 connections on each of the ERS 8600 switches. Which statement describes how to accomplish this requirement in each ERS 8600 chassis?

- A. Replace the two existing switch fabric modules with 8394SF systems.
- B. Replace the two existing switch fabric modules with 8692SF and Supermezz.
- C. Replace the two existing 8616SXE modules with 8612XLRS modules.
- D. Replace the six 8683XLR modules with 8612XLRS.

Correct Answer: C

Section: (none)

Explanation

Explanation/Reference:

QUESTION 32

Not long after bootup of an upgraded Ethernet Routing Switch (ERS) 8310, the system hangs. Which statement describes the cause of this problem?

- A. The CPU module was configured in slot 5.
- B. An ERS 8600 module was configured in the 8300 chassis
- C. The system includes dual 839xSF modules

D. The system was running in full duplex mode.

Correct Answer: C

Section: (none)

Explanation

Explanation/Reference:

valid.

QUESTION 33

Which statement describe step in provisioning SPBM in an Enterprise network?

- A. IP addresses on the core links.
- B. Enable SPBM and IS-IS globally on all nodes and on the core facing links.
- C. Configure the MAC table.
- D. Configure L2 and L3 VSNs on the core SPBM nodes.

Correct Answer: B

Section: (none)

Explanation

Explanation/Reference:



QUESTION 34

Syslog in the Ethernet Routing Switch (ERS) 8600 allows the mapping of ERS 8600 errors to be Specified to the facility Local 0 Local 7.

What is another piece of information that syslog provides?

- A. severity level
- B. message frequency
- C. syslog table location
- D. system status

Correct Answer: A

Section: (none)

Explanation

Explanation/Reference:

QUESTION 35

The goal of the Converged Campus architecture is to provide a highly reliable infrastructure with subscribed failover preventing any interruption of traffic on the network? What are the two primary benefits of this design goal? (Choose two)

- A. In the event of a failure, no less of connectivity or application availability will be experienced by the end user.
- B. This architecture provides high performance Layer 3 switching, resiliency, security, and services.
- C. This design goal provides numerous connectivity options including Asynchronous Transfer Mode (ATM), Packet over SONET (POS), and 10 Gigabit Ethernet.
- D. The design goal provides the ability to provide hitless software upgrade for the core of the network.

Correct Answer: AD

Section: (none)

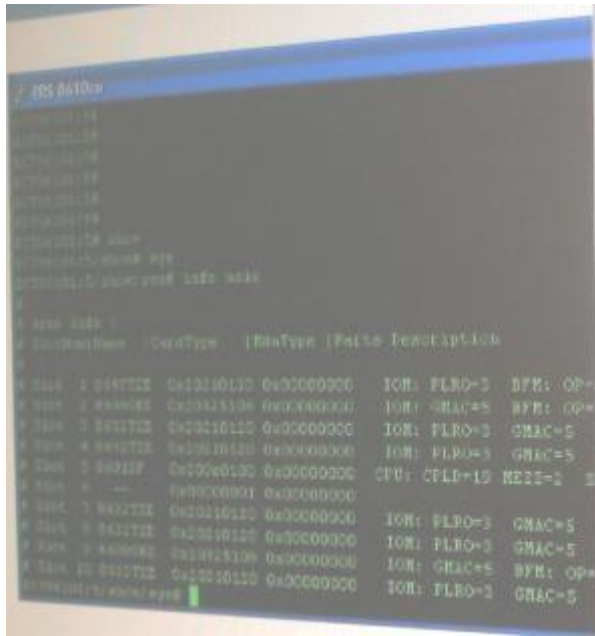
Explanation

Explanation/Reference:

QUESTION 36

Based on the command line output shown in the exhibit, how many Gigabit Ethernet ports are available on this Ethernet Routing Switch (ERS) 8600?

The logo for VCEplus.com, featuring a stylized orange 'V' followed by the word 'dumps' in a grey, lowercase, sans-serif font.



 v-dumps

- A. 16
- B. 24
- C. 26
- D. 28

Correct Answer: C

Section: (none)

Explanation

Explanation/Reference:

QUESTION 37

The technician is setting up an Ethernet Routing Switch (ERS) 8300 switch for QoS. It has been determined that unimportant traffic will be marked on the edge of the network with a default IEEE 802.1p setting of 0. Since the ERS 8300 is in the core, the traffic must be identified with the proper class of service. The technician has used JDM to look at the TrafficClass Map with the shown in the exhibit.

192.168.168.201 - QoS Maps

QoS Global 8021p to TrafficClass Map Tra

Row	ieee8021p	TrafficClass
1	0	1
2	1	0
3	2	2
4	3	3
5	4	4
6	5	5
7	6	6
8	7	7

What can be determined from the ERS 8300 parameters?

- A. The ERS 8300 mapping has been altered since the IEEE 802.1p settings do not map directly to the same Traffic Class.
- B. The ERS 8300 mapping is normal and should be left as is.
- C. The ERS 8300 mapping will push the IEEE 802.1p setting off 0 above the network control traffic.
- D. The ERS 8300 as a core device will not use the IEEE 802.1p to Traffic Class Map for this application.

Correct Answer: A

Section: (none)

Explanation

Explanation/Reference:

QUESTION 38

Virtual forwarding eliminates the need for multiple physical routers. What is the difference in the Virtual Routing forwarding (VRF)-Lite configuration from Ethernet Routing switches (ERS) 8600/8800 to ERSS300?

- A. 8300 supports 250 virtual routers; ERS 8600/8800 supports 256.
- B. On ERS 8600/8800, VRF-Lite virtualizes the control and data plane as well as the routing tables.
- C. ERS 8300 supports Inter-VRF routing policies

D. ERS 8600/8800 supports inter-VRF routing policies.

Correct Answer: D

Section: (none)

Explanation

Explanation/Reference:

QUESTION 39

A technician is setting up switch clustering using Split Multi-Link Trunking (SMLT). Which link is configured between the aggregation switches?

- A. Inter-switch trunk
- B. Multi-Link trunk
- C. Split MAC trunk
- D. LAG trunk

Correct Answer: A

Section: (none)

Explanation

Explanation/Reference:



QUESTION 40

A technician is troubleshooting some IP telephones that are connected to an Ethernet Routing switch (ERS) 8300 8348TX-PWR I/O module. The IP telephones will not turn on. The 48V LED on the module has been checked and it is steady amber.

- A. 48V is present.
- B. PoE is disabled.
- C. 48V is not available.
- D. Module is booting.

Correct Answer: D

Section: (none)

Explanation

Explanation/Reference:

QUESTION 41

Which group of commands will configure Ethernet Routing Switch (ERS) 8600 to deny any source in the multicast group from reaching the multicast receivers connected to ERS 8600-B?

- A. `config ip prefix-list "2" add-prefix 10.1.1.0/30`
`config vlan 2 ip igmp access-control 2 create 172.3.1.0 255.255.255.0 deny-tx`
- B. `config ip prefix-list "2" add-prefix 192.4.0-0/12`
`config vlan 2 ip igmp access-control 2 create 172.3.1.0 255.255.255.0 deny-rx`
- C. `config ip prefix-list "2" add-prefix 238.1.1.0/24`
`config vlan 2 ip igmp access-control 2 create 172.3.1.0 255.255.255.0 deny-tx`
- D. `config ip prefix-list "2" add-prefix 238.1.1.0/24`
`config vlan 2 ip igmp access-control 2 create 194.4.10.0 255.255.255.0 deny-tx`

Correct Answer: C

Section: (none)

Explanation

Explanation/Reference:



QUESTION 42

A technician has implemented Routed Split Multi-Link Trunking (RSM I) edge design. After recovering power outage some clients could not communicate. It has been determined that only one of the core RSM I switches has recovered. What should have been done to prevent the loss communications?

- A. Turn off the HoldDown timer.
- B. Increase the Holdup timer to 9999.
- C. Clear the peer IP and MAC addresses
- D. Set the VLAN to copy RSM I info from a similarly configured VLAN.

Correct Answer: B

Section: (none)

Explanation

Explanation/Reference:

QUESTION 43

While configuring packet capture Tool (PCAP), an Ethernet Routing Switch (ERS) 8600 switch has generated the following log:

pcapAllocateBuffer: malloc(96 Mbs) failed

Which event could have caused this log, and which course of action resolves the issue?

- A. The memory allocation failed to wrap. Set Pcmcia Wrap to true
- B. The packet capturing stopped. Enable the Buffer-wrap or reset the stats.
- C. The length of the IP frame is too long to capture. Turn on fragmentation
- D. There is not enough available memory for PCAP. Try with a lower value of buffer-size.

Correct Answer: D

Section: (none)

Explanation

Explanation/Reference:

QUESTION 44

Routed Split Multi-Link Trunking (RSMLT) is a way to ensure that traffic can be routed off the VLAN adding router redundancy. On which Ethernet Routing Switch (ERS) configuration component is RSMLT configured?

- A. an OSPF protocol
- B. a core switch port
- C. a VLAN
- D. an MLT

Correct Answer: C

Section: (none)

Explanation

Explanation/Reference:

QUESTION 45

IPFIX is protocol used for the export of flow information from traffic observed on a switch. Which true for the functioning of the IPIX protocol? (Choose two.)

- A. The IPFIX exporter handles sending packets to the collectors.
- B. There is a command for exporting and flushing.
- C. The IPFIX information cannot be exported to a 3rd-party application.

D. The exporter can support up to 6 collectors

Correct Answer: AB

Section: (none)

Explanation

Explanation/Reference:

QUESTION 46

A campus network has been established with four Ethernet Routing Switch (ERS) 8600 switches in a switch cluster, two pairs with an Inter Switch Trunks (1ST) running Split Multi-Link Trunk (SMLT) and Routed Split Multi-Link Trunking (RSMLT). The traffic filters are required to block specific source IP addresses to be forwarded through the core.

How should these filters be set up?

- A. Configure the filters on the 1ST first before any other ports.
- B. Apply the filters to all ports that receive traffic from outside the immediate switch cluster.
- C. Configure the filters on the ports first and then the 1ST.
- D. Apply the filters to the edge switches and never on the switch cluster ERS 8600 switches.

Correct Answer: D

Section: (none)

Explanation

Explanation/Reference:

QUESTION 47

OSPF computes the shortest path to destination subnets, whereas, IS-IS, as used with SPMB works differently. Which parameter does IS-IS use to compute the path?

- A. customer MACs
- B. backbone BEB MAC tables
- C. VLAN MAC IDs
- D. backbone nodal MAC addresses

Correct Answer: B

Section: (none)

Explanation

Explanation/Reference:

QUESTION 48

Which three functions describe VPFM? (Choose three.)

- A. It is a network health at a glance tool.
- B. It can correlate faults, traps, and provide notification.
- C. It is another term for the SNMP credential.
- D. It is a baselining tool.
- E. It is a device configuration tool.

Correct Answer: ABE

Section: (none)

Explanation

Explanation/Reference:



QUESTION 49

```
Config mlt 1 create name "MLT to Core"  
Config rmlt 1 add ports 3/8, 4/8  
Config mlt 1 add vlan 1  
Config mlt 1 perform-tagging enable  
ho mlt info 1
```

To add more links to this MLT setup at a later date, what needs to be provisioned?

- A. Create a new VLAN and add the new VLAN to the MLT.
- B. More ports cannot be added because only a total of two can be aggregated to the core device.
- C. once the MLT is enabled and working, more ports cannot be added to the link aggregation
- D. Associate the new ports to the same settings as the current MLT ports; then add them to the MLT.

Correct Answer: D

Section: (none)

Explanation

Explanation/Reference:

QUESTION 50

A call centre is using the stacks of Ethernet Routing Switches (ERS) 5520-48T-PWR to supply power over Ethernet (PoE) to their IP telephones. Each switch is attached to 48 telephones. The call centre begins operation at 9:00 am each day and they verify that the switch can supply enough power to support each telephone drawing their maximum power for all switches simultaneously. They are using the IP Phone port 10/100 switch.

Which statement it is true if all telephones are drawing 13.2 watts simultaneously?

- A. Each switch of supplying full port to all ports with only the AC input
- B. Each switch requires an RPSU 15 in addition to AC to supply full power to all ports.
- C. RPSU 15 can support four ERS 5520 switches that supply full power to all ports.
- D. Each switch can supply full power to all ports while the AC is unavailable if attached to

Correct Answer: B

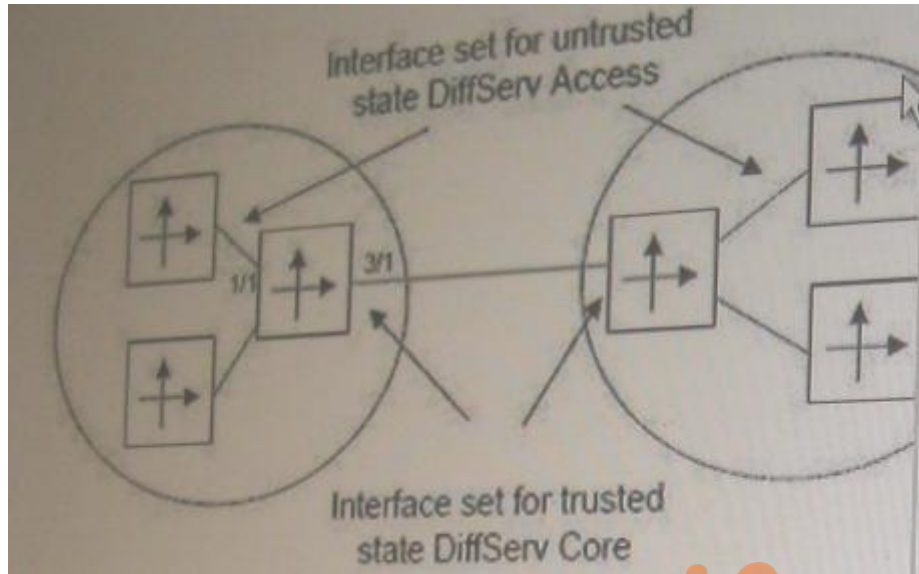
Section: (none)

Explanation

Explanation/Reference:

**QUESTION 51**

Which commands will configure the labeled Ethernet ports appropriately?



 v-dumps

- A. Config Ethernet 3/1 enable-diffserv true
config Ethernet 1/1 access-diffserv true
- B. Config Ethernet 3/1 enable-diffserv true
config Ethernet 1/1 access-diffserv false
- C. Config Ethernet 1/1, 3/1 enable-diffserv true
config Ethernet 1/1 access-diffserv true
- D. Config Ethernet 3/1 enable-diffserv true
config Ethernet 3/1 access-diffserv true

Correct Answer: C

Section: (none)

Explanation

Explanation/Reference:

QUESTION 52

Auto-negotiation should be enabled on all ports except under which condition?

- A. When there is a mix of 10 Mbps and 1 Gbps end servers
- B. When there are fiber ports in some end workstations
- C. When only the core switches support auto-negotiation
- D. When there is a mix of R and S modules in the stack

Correct Answer: C

Section: (none)

Explanation

Explanation/Reference:

QUESTION 53

A technician is configuring the core of a Converged Campus network, and is adding a backup-master configuration to an existing Virtual Router Redundancy Protocol (VRRP) configuration for a VLAN that extends to the edge switches. Which benefit is expected from the addition of backup-master?

- A. reduced traffic on the Inter Switch Trunks (IST)
- B. reduced traffic on the uplink ports
- C. redundant default gateways for host devices
- D. reduces VRRP hello packets

Correct Answer: A

Section: (none)

Explanation

Explanation/Reference:

QUESTION 54

In the interaction between EAPoL and the Enterprise Policy Manager (EPM), what is the role EPM in the User-Based Policy (UBP) process?

- A. It passes the user access request to the RADIUS server
- B. It authenticates the user request.

- C. It opens a port.
- D. it applies the required treatment to the access port.

Correct Answer: A

Section: (none)

Explanation

Explanation/Reference:

QUESTION 55

A technician wants to control the routes being added to the routing table from the BGP routing table. Which statement describes how to do this?

- A. BGP filters are applied to all incoming route information.
- B. BGP filters are applied only to external route information.
- C. Metrics determine which routes are inserted into the routing table,
- D. BGP adds all new priority routes to the routing table.

Correct Answer: C

Section: (none)

Explanation



Explanation/Reference:

QUESTION 56

In a multicast campus, when should the PIM interface in passive mode be configured?

- A. When the ERS 8600 is used as an edge switch and is aggregating end users
- B. When PIM control traffic must be passed
- C. When there are no unicast routing paths
- D. When more than one multicast routing protocol is in use

Correct Answer: A

Section: (none)

Explanation

Explanation/Reference:

QUESTION 57

A split Multi-Link Trunking (SMLT) for switch clustering is being configured. Which statement is a configuration requirement for the SMLT?

- A. CP-Limit is configured on edge switch stacks.
- B. Neighboring edge switch stacks should be connected to each other via a DMLT connection to add resilient paths in the event of an SMLT failure.
- C. Alternate the primary path of the SMLT connection to load balance the switch core.
- D. VLANs that are defined on the SMLT are so defined on the MLT that defines the core Inter Switch Trunks (IST)

Correct Answer: D

Section: (none)

Explanation

Explanation/Reference:

QUESTION 58

After issuing a show mit ist stats (CLI) or show ist stat (ACLI) command, it is determined that running type is normal MLT and not Inter Switch Trunks (IST). Which are two causes of the 1ST not running properly? (Choose two.)

- A. The 1ST is not enabled on both switches.
- B. The MLT ID does not match on both switches.
- C. The peer IP address is not the address of the peer switch 1ST VLAN
- D. The peer IP addresses have to be 192.168.1.1/30 and 192.168.1.2/30.

Correct Answer: AC

Section: (none)

Explanation

Explanation/Reference:

QUESTION 59

A technician is configuring password levels on the Ethernet Routing Switch (ERS) 8600, and wants the manager to be able to view and edit device settings, but not to be able to change security and password settings. Which Login Level should be set for the manager?

- A. Layer 2 Read-Write Accesses
- B. Layer 3 Read-Write Access
- C. Read-Write-All Access

D. Read-Write Access

Correct Answer: D

Section: (none)

Explanation

Explanation/Reference:

QUESTION 60

After experiencing issues with XFPs, the show sys pluggable-optical-modules info CLI command is used to find that the switch does not recognize the XFPs. Which other method can be used to view the XFP compatibility?

- A. Check for port alarms.
- B. Show DWDM-XFP {detail}.
- C. Check the config sys set pluggable-optical-module info.
- D. Select Edit, Port, General, DDI/SFP from the Enterprise Device Manager to see the XFP port specifics_

Correct Answer: D

Section: (none)

Explanation

Explanation/Reference:

super valid.



QUESTION 61

The exhibit indicates the two show commands from an edge Ethernet Routing Switch (ERS) 5520-24T-PWR an untagged frame arrives on port 10. which is configured as an access port To which VLAN will the packet be forwarded?

```

5520 Edge (SSH)
5520-24T-PWR#show vlan int info 10-11
      Filter      Filter
      Untagged  Unregistered
Port  Frames      Frames      PVID PRI      Tagging      Name
-----
10   No          Yes         312  0      TagAll       Port 10
11   No          Yes         312  0      TagAll       Port 11
5520-24T-PWR#show vlan int vid 10-11
Port VLAN VLAN Name      VLAN VLAN Name      VLAN VLAN Name
-----
10   311  VLAN-311       312  VLAN-312
11   311  VLAN-311       312  VLAN-312
5520-24T-PWR#

```

- A. All untagged packets will be placed in the default VLAN (VLAN 1).
- B. All untagged packets will be discarded.
- C. All untagged packets will be placed in VLAN 311
- D. All untagged packets will be placed in VLAN 31?

Correct Answer: B

Section: (none)

Explanation

Explanation/Reference:

QUESTION 62

How many Ethernet Routing Switch (ERS) 4500 switches can be connected in a single stack?

- A. 4
- B. 8
- C. 9
- D. 10

Correct Answer: B

Section: (none)

Explanation

Explanation/Reference:

QUESTION 63

An engineer needs to assign an IP address of 172.25.10.31 for out of band management of an Ethernet Routing switch (ERS) 8600 switch a subnet mask of 255.255.255.192. Which command line interface (CLI) command should the engineer use?

- A. ERS8600:5# config bootconfig set ip 172.26.10 36/26
- B. ERS8800:5 # config bootconfig set ip 172.25.10 36/27
- C. ERS8600:5# config bootconfig net mgmt ip 172.25.10.36/27
- D. ERS8600:5# config bootconfig net mgmt ip 172.25.10.36/26

Correct Answer: D

Section: (none)

Explanation

Explanation/Reference:



QUESTION 64

Consider the following deployment requirements

Support 40 100 Mb/s VoIP telephones, each with a power requirement of 6 Watt Support 40 directly connected 1000 Mb/s Ethernet workstations with UTP cable

Support four 1Gb/s Ethernet uplinks to the core switch using multimode fiber.

Which configuration is the minimum hardware required for an Ethernet Routing Switch (ERS) 8306 chassis that will support the above requirements?

- A. Two 8348TX-PWR
One 8393SF
- B. One 8348GTx
One 8348Tx-PWR
One 8393SF
- C. One 8348GTx
One 8348Tx-PWF
One 8308 XL
One 8393SF

- D. Two 8348GTx-PWF
One 8308XX
One 8393SF

Correct Answer: B
Section: (none)
Explanation

Explanation/Reference:

QUESTION 65

During a power-on or cold-start sequence, at which stage can the flags to change the operational environment of the switch be set?

- A. boot monitor prompt
- B. image search
- C. PC system test
- D. boot configuration prompt

Correct Answer: A
Section: (none)
Explanation

Explanation/Reference:



QUESTION 66

Ethernet Routing Switch (ERS) 5500 supports a resilient stacking architecture using FAST Stack technology with this stacking capability, what is the total stacking bandwidth for a full stack of eight switches?

- A. 400 Gbps
- B. 640 Gbps
- C. 720 Gbps
- D. 1.15 Tbps

Correct Answer: B
Section: (none)
Explanation

Explanation/Reference:

QUESTION 67

With release 4.0 or higher software on the Ethernet routing switch (ERS) 8300, an advanced routing license is required to enable certain features. Which two statements are true about the Advanced Routing License process and supported features for the ERS 8300? (Choose two.)

- A. the Advanced Routing License supports QoS, SMLT, VRRP and OSPF
- B. the Advanced Routing License supports SMLT, VRRP, OSPF, PIM-SM. and SLPP
- C. To protect against security breaches, the ERS 8300 allows only a primary path for the license file
- D. To protect against system flash failure, the ERS 8300 allows a primary, secondary, and tertiary path for the license file.

Correct Answer: BD

Section: (none)

Explanation

Explanation/Reference:

QUESTION 68

Consider the following port conditions on an Ethernet Routing Switch (ERS) 8648GTRS 10/100/1000 Ethernet I/O module left LED -green Right LED - flashing green.

What is the status of the port?

- A. The link speed is 100 Mbps. and the port is disabled.
- B. The link speed is 1000 Mbps, and the port is disabled
- C. The link speed is 100 Mbps. and the port is passing traffic.
- D. The link speed is 1000 Mbps. and the port is passing traffic.

Correct Answer: C

Section: (none)

Explanation

Explanation/Reference:

QUESTION 69

A network has some Ethernet Routing Switch (ERS) 5500 switches licensed at the advanced level for Release 6.2. A technician implementing Protocol independent Multicast - Sparse Mode (PIM-SM) Which licensing requirement applies?

- A. the PIM-SM is already covered by the existing advanced feature license
- B. the PIM-SM can only be licensed on ERS 5510 models
- C. the PIM-SM is included in the base license with release 6.2
- D. A Premier license is needed

Correct Answer: C

Section: (none)

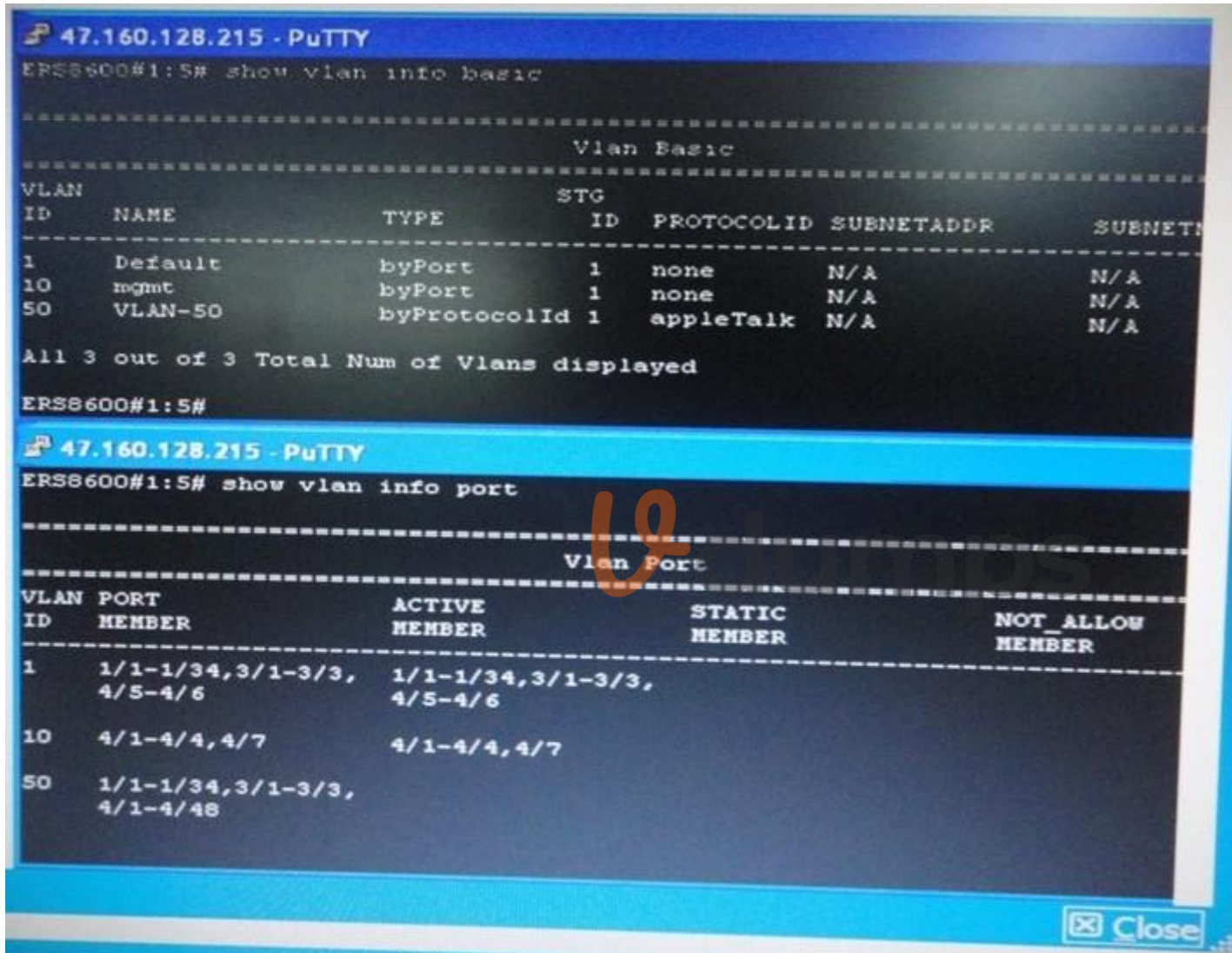
Explanation

Explanation/Reference:

QUESTION 70

Click on the exhibit button





After checking the VLAN configuration using the show vlan info basic and the show vlan info port commands, there are no ACTIVE MEMBER ports for VLM4-50. What is causing this problem?

- A. The ports have not been configured as active for this VLAN

- B. AppleTalk Protocol VLANs do not have ACTIVE MEMBERS
- C. The default setting for this type of VLAN is potential and no AppleTalk traffic has entered any of these ports
- D. There are no devices connected to these ports.

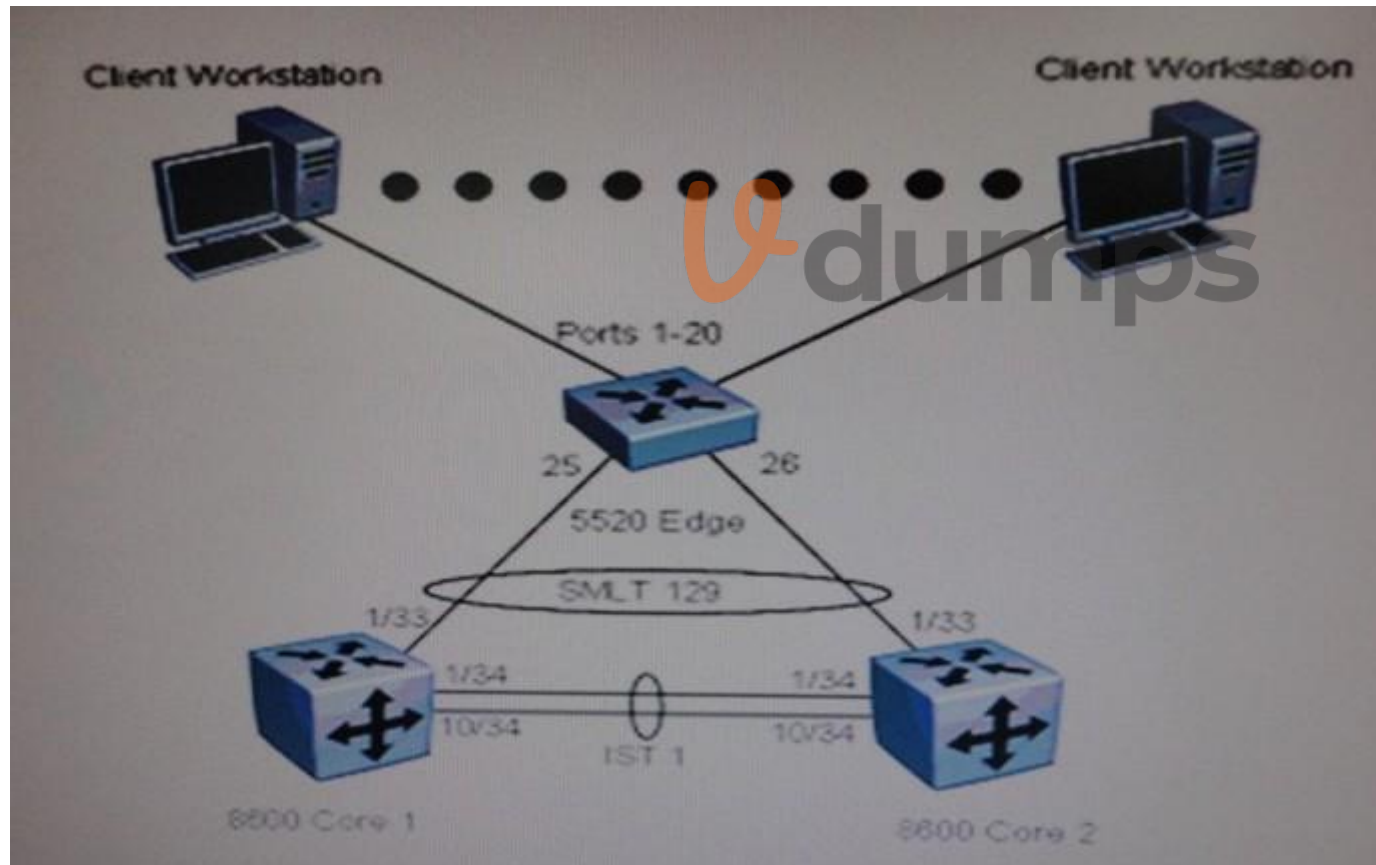
Correct Answer: C

Section: (none)

Explanation

Explanation/Reference:

QUESTION 71



Which two pairs of commands will configure spanning tree on the edge switch? (Choose two)

- A. 5520-24T (config) # interface fastethernet 25-26
5520-24T (config-if) # spanning-tree learning fast
- B. 5520-24T (config) # interface fastethernet 25-26
5520-24T (config-if) # spanning tree learning disable
- C. 5520-24T (config) # interface fastethernet 1-20
5520-24T (config-if) # spanning tree learning disable
- D. 5520-24T (config) # interface fastethernet 1-20
5520-24T (config-if) # spanning-tree learning fast

Correct Answer: AC

Section: (none)

Explanation

Explanation/Reference:

As we need to disable SPT on access port as we are not expecting BPDUs

QUESTION 72

An Ethernet routing switch (ERS) 4550T-PWR has been deployed with a single AC power supply and is currently supporting 20 VoIP telephones with power over Ethernet (PoE). each with a power draw of 8 Watts when offhook. The network engineer has requested the addition of 5 Wireless Access points (WAPs) to the ERS 4550T-PWR. Each WAP supports PoE and requires 12 Watts of power.

What is the outcome of the addition of the WAPs to the ERS 4550T-PWR?

- A. The 4550T-PWR will have sufficient power to support the 20 VoIP telephones and 5 WAP devices,
- B. The addition of a second AC power supply will be required to provide sufficient power to the ERS -4550T-PWR to Support all of-the PoE devices.
- C. The addition of a Redundant Power Supply 15 will be required to provide sufficient power to ensure the VoIP phones and WAP function property.
- D. the power requirement of the WAP exceeds the individual port maximum power rating of the ERS 4550T-PWR and will therefore require an external power source.

Correct Answer: A

Section: (none)

Explanation

Explanation/Reference:

QUESTION 73

Which steps are initial steps required to configure the Ethernet Routing Switch (ERS) 8600 in a clustered basic core configuration? (Choose three.)

- A. create VLANs
- B. create the IST
- C. enables OSPF
- D. configure SMLT

Correct Answer: ABD

Section: (none)

Explanation

Explanation/Reference:

QUESTION 74

An Ethernet Routing Switch (ERS) 8600 for Virtual Router Redundancy Protocol (VRRP) is being configured. Which CU command would cause this switch to be the VRRP master?

- A. ERS8600:5# config vlan 100 ip vrrp 100 priority 250
- B. ERS8600:5ff config vlan 100 ip vrrp 100 priority 1
- C. ERS8600:5# config vlan 100 ip vrrp 100 master
- D. ERS8600:5# config vlan 100 ip vrrp 100 priority master



Correct Answer: A

Section: (none)

Explanation

Explanation/Reference:

QUESTION 75

A technician is configuring a Link Aggregation connection from a stack of Ethernet Routing Switch (ERS) 5500 to a core pair of ERS 8600 switches. Which statement about the correct uplink configuration is true?

- A. Distribute uplinks across different ERS 5500 switches in the stack.
- B. Disable auto negotiation and replace it with VLACP to identify single fiber fault failure
- C. Use unique MLT IDS for each stack of edge ERS 5500 switches
- D. Enable Spanning Tree Protocol for the MLT when using it with SMLT in the core of the network.

Correct Answer: A

Section: (none)

Explanation

Explanation/Reference:

QUESTION 76

After issuing a show mlt list stats (CLI) or show ist Stat (ACLI) command, it is determined that the running type is normal MLT and not 1ST
What are two causes of the IST not running properly? (Choose two)

- A. The IST is not enabled on both switches.
- B. The MLT ID does not match on both switches.
- C. The peer IP address is not the address of the peer switch IST VLAN.
- D. The peer IP addresses have to be 192.168.1.1/30 and 192.168.1.2/30.

Correct Answer: BC

Section: (none)

Explanation

Explanation/Reference:



QUESTION 77

A customer has purchased some Ethernet Routing Switch (ERS) 5600 switches must integrate two ERS 5600 units into existing stack of ERS 5500 switches. What is the procedure for the integration of the new ERS 5600?

- A. with power applied to the slack, change the existing ERS 5500 base unit to "Non Base Unit" in mixed stack operation Integrate the two new ERS 5600 to the stack with them set as "Base Unit" in mixed stack operation Reboot the stack.
- B. Remove the AC from the stack, integrate the two ERS 5600 units into the existing 5600 set to "base unit" and one ERS 5600 set to "non base unit" set the existing ERS 5500 base unit to "non base unit" apply power to stack.
- C. With power applied to the stack, integrate one ERS into the stack as non base unit in mixed stack operational mode. Change the existing ERS 5500 base unit to "non base unit" and set the new 5600 to "base unit". Reboot the stack integrate the second ERS 5600 in mixed stack operational mode.
- D. With power applied to the stack, integrate one ERS into the stack as non base unit in mixed stack operational mode. After the two ERS 5600 units have obtained their configuration from the ERS 5500 base unit, change the ERS 5500 to "non base unit" and set one ERS 5600 to "base unit". Reboot the switch stack.

Correct Answer: D

Section: (none)

Explanation

Explanation/Reference:

QUESTION 78

What is the maximum number of Gigabit Ethernet ports on a single Ethernet Routing Switch (ERS) 8300 Input/Output module?

- A. 16
- B. 24
- C. 48
- D. 50

Correct Answer: C

Section: (none)

Explanation

Explanation/Reference:

QUESTION 79

Consider four software upgrade events on an Ethernet Routing Switch (ERS) 2500 series switch:

1. Upgrade the software image
2. The System Reboots
3. Backup the binary configuration to a TFTP server
4. Upgrade the boot/diagnostic code, if the new version is available

Which sequence of events will correctly upgrade the software?

- A. 3.2.4. 1
- B. 3.4.2.1
- C. 3.2.1.4
- D. 1.2.4.3
- E. 1.4.2.3

Correct Answer: B

Section: (none)

Explanation

Explanation/Reference:

QUESTION 80

Avaya recommends using RSMLT edge in place of VRRP with Backup Master, when available what are two valid reasons for using RSMLT edge? (Choose two)

- A. the VRRP hold down timer cannot be set high enough to update the complete routing table when Layer 2 access requirements are high.
- B. RSMLT edge provides support for application where more than 255 redundant default gateways (VRRP limit) need to be provided.
- C. RSMLT edge allows the cluster to be configured to discard untagged frames in 1ST and SMLT ports.
- D. RSMLT edge is easier to configure and lightens the CPU load,
- E. RSML T dynamically balances the CPU load across the switch cluster.

Correct Answer: BD

Section: (none)

Explanation

Explanation/Reference:

answer is perfected.

QUESTION 81

A technician has compiled me configuration of an Ethernet Routing (ERS) 5520 to and now must transfer a backup copy of configuration file to server. Which command is used to accomplish this task?

- A. 5520.24T-PWR> copy config ftp filename ers5520 config.cfg
- B. 5520-24T-PWR# copy config ftp filename ers5520config.cfg
- C. 5570-74T PWR# copy config tftp filename ers5520COnfig.cfg
- D. 5520-24T-PWR# copy config scp filename ersS520conftg.cfg

Correct Answer: C

Section: (none)

Explanation

Explanation/Reference:

QUESTION 82

A technician has implemented RSMLT edge design. After recovering from power outage some clients could not communicate. It has been stated that only one of the core RSMLT switches has recovered. What should have been done to prevent the loss of communications?

- A. Turn off the hold down timer.
- B. Increase the hold up timer to 9999.
- C. Clear the peer IP and MAC addresses.
- D. Set the VLAN to copy RSMILT into from a similarity configured VLAN.

Correct Answer: A

Section: (none)

Explanation

Explanation/Reference:

QUESTION 83

The attempt to manage an Ethernet Routing Switch (ERS) 8600 using a VRRP address was unsuccessful. What is causing this problem?

- A. The file virtual router identifier is 0.
- B. The datacenter interface is set as a critical IP interface.
- C. A real IP address is required for management access not a VRRP address.
- D. The incorrect MAC offset is configured for the VRRP address.

Correct Answer: C

Section: (none)

Explanation

Explanation/Reference:

QUESTION 84

A technician is adding the Virtual Link Aggregation Control Protocol (VLACP) configuration ID a Converged Campus Solution where all Ethernet Routing switches (ERSs) are directly connected without intermediary WAN transport devices. What are two key configuration tasks? (Choose two)

- A. configure all links to use the default multicast MAC address for VLACP messages
- B. For the 1ST links, configure the long timeout value
- C. For the SMLT links, configure the long timeout value
- D. Configure all links to use a unique reserved multicast MAC address for VLACP messages

Correct Answer: BD

Section: (none)

Explanation

Explanation/Reference:

QUESTION 85

A technician has installed a license file on the Ethernet routing switch (ERS) 8800 and rebooted, but cannot configure the associated licensed features. It has been determined that the license did not load properly at bootup time.

Which two must be verified?

- A. The switch is at the current release.
- B. The license filename contains valid characters.
- C. The license file is stored in the flash directory.
- D. The appropriate license level has been obtained.
- E. The license file has .dat extension.

Correct Answer: BE

Section: (none)

Explanation

Explanation/Reference:



QUESTION 86

In a newly installed network the port LED on an Ethernet Routing Switch (ERS) 5500 is amber, not green. What does this mean?

- A. The port is set to operate at 10 Mbps.
- B. The port is set to operate at 100 Mbps.
- C. It indicates that there is a transmit fault.
- D. It indicates that the port is administratively disabled.

Correct Answer: D

Section: (none)

Explanation

Explanation/Reference:

QUESTION 87

The Ethernet routing switch (ERS) 5000 switches are being upgraded and it appears that a license is not recognized on the switch. Which two statements are valid sources of information that will help resolve the license installation? (Choose two.)

- A. Check for an 'invalid license file' log report
- B. Check the record of MSG address changes
- C. Use the show license command to get the license installation status
- D. Check to see if the MAC address is correct in the license file.
- E. Use the show license file command to get the license installation status.

Correct Answer: CD

Section: (none)

Explanation

Explanation/Reference:

QUESTION 88

One of the switches in the Ethernet Routing Switch (ERS) stacks files and is replaced. The auto unit replacement (AUR) is enabled but the stack is not functioning properly. What is the problem?

- A. The switches in the stack are not identical
- B. the stack power was left on during the switch replacement.
- C. The switches in the stack are not running the same release of software
- D. The stack has two switches with Force Stack disabled.

Correct Answer: B

Section: (none)

Explanation

Explanation/Reference:

QUESTION 89

A technician needs to reboot an Ethernet Routing Switch (ERS) 5000 Series switch with a default configuration. What needs to be done to keep the IP address and stack license?

- A. Boot partial-default
- B. Boot-default save-license

- C. Boot default-save
- D. Boot restore-license

Correct Answer: A

Section: (none)

Explanation

Explanation/Reference:

QUESTION 90

A customer needs to install a new Ethernet Routing Switch (ERS) 2550T on the 172.16.5.0/24 network, but does not have a console cable available. Which statement is correct?

- A. The switch will first attempt to use BootP to acquire an IP address, and if that fails it will assign IP address 192.160.1.1/24 to the switch IP.
- B. The customer can set the switch to use the temporary address of 192.168.192.168 by pressing the User Interface button on the front of the ERS 2550T
- C. To communicate with an ERS 2550T the IP address must first be set through the console interface.
- D. The customer can connect to the network management Ethernet port which is pre-configured to use the 192.168.1.1/24 IP address

Correct Answer: D

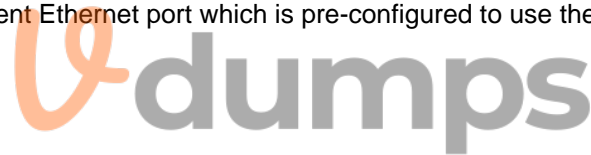
Section: (none)

Explanation

Explanation/Reference:

QUESTION 91

Click the exhibit button.



The network diagram shows a central 5520 Edge switch connected to two 8600 Core switches (Core 1 and Core 2). The Edge switch is connected to Core 1 via ports 25 and 26, and to Core 2 via ports 25 and 26. A Spanning Tree Multicast Link Traversal (SMLT) group named SMLT 129 is configured across the Edge switch and both Core switches. The Edge switch is connected to Core 1 via ports 1/16 and 10/34, and to Core 2 via ports 1/16 and 10/34. An IST 1 is also shown.

The console output from the 8600 Core 1 switch shows the following error message:

```
ERS865:5#
ERS865:5#
ERS865:5#
ERS865:5#
ERS865:5#CPU6 [06/09/09 20:17:16] SW WARNING slppRx: SLPP packet received Rx-Vlan 1, Rx-Port 1/16, PDU-Vlan 1, SRC-Mac 00:60:cf:80:b8:00
show int fa state 1/16
-----
Port State
-----
PORT NUM    ADMINSTATUS  PORTSTATE  REASON    DATE
-----
1/16        up           down       SLPP      06/09/09 20:17:16
ERS865:5#
```

SLPP has just been enabled on both core switches.

Based on the network diagram and console output from the core 1 Ethernet Routing Switch (ERS) B600 shown in the exhibit, what is the configuration error on the edge switch?

- The edge switch spanning-trcc has not been configured.
- The edge switch access port rate limiting has not been configured.
- The edge MLT has not been configured correctly.
- The edge VUXNs has not been configured.

Correct Answer: A

Section: (none)

Explanation

Explanation/Reference:

QUESTION 92

A technician is configuring password levels on the Ethernet Routing Switch (ERS) 8600, and wants the manager to be able to view and edit most device settings, but not be able to change security and password settings. Which login Level should be set for the manager?

- A. Layer 2 Read Write Access
- B. Layer3Read-WnteAccess
- C. Read Write All Access
- D. Read-Write Access

Correct Answer: D

Section: (none)

Explanation

Explanation/Reference:



QUESTION 93

Routed Split Multilinking Trunking (RSMLT) is a way to ensure that traffic can be routed off the VLAN by adding router redundancy. RSMLT is configured on which Ethernet Routing Switch (ERS) configuration component?

- A. an OSPF router
- B. a core switch port
- C. a VLAN
- D. an SMLT

Correct Answer: A

Section: (none)

Explanation

Explanation/Reference:

QUESTION 94

A technician is configuring the core of a Converged Campus network, and is adding a backup-master configuration to an existing Virtual Router Redundancy Protocol (VRRP) configuration for a VLAN that extends to the edge switches. Which benefit is expected from the Addition of backup-master?

- A. reduced traffic on the IST
- B. reduced traffic on the uplink ports
- C. redundant default gateways for host devices
- D. faster switchover time

Correct Answer: D

Section: (none)

Explanation

Explanation/Reference:

QUESTION 95

In Ethernet Routing Switch (ERS) 5600 switch was added into the existing ERS 5500 stack, but it did not form a proper stack. Which statement describes the problem?

- A. The ERS 5600 was set as the Base Unit.
- B. The stack was reset for a change in Base Unit to take effect.
- C. The mode parameter on the ERS 5600 switch was set to Mixed Mode.
- D. The ERS 5500 was set as the Base Unit.

Correct Answer: D

Section: (none)

Explanation

Explanation/Reference:

QUESTION 96

When configuring an Ethernet Routing Switch (ERS) 8600 for Split Multi link Trunking (SMLT). Protection against an edge switch in the factory default condition must be taken into consideration. Which parameter WILL help prevent loops on the SMLT ports?

- A. Discard Untagged Frames

- B. Discard Looped Frames
- C. Spanning Tree Enable
- D. LACP Enable

Correct Answer: A

Section: (none)

Explanation

Explanation/Reference:

QUESTION 97

Confirm that RSMLT will work on a set of VLANs. Which network design aspect should be considered?

- A. RSMLT is enabled on each SMLT VLAN on which the function is required
- B. RSMLT is enabled on the VLAN group.
- C. Router 1 always owns the network.
- D. RSMLT is enabled on all SMLT VLANs.

Correct Answer: A

Section: (none)

Explanation

Explanation/Reference:



QUESTION 98

A switch with Simple Loop Prevention Protocol (SLPP) did not detect a loop. What are two reasons this occurred? (Choose two)

- A. SLPP was not globally enabled
- B. A premier License for SLPP is needed.
- C. the VLAN where the loop originated to the SLPP transmitting list was not added.
- D. Extended CP limit on the transmitting port was not configured.

Correct Answer: AC

Section: (none)

Explanation

Explanation/Reference:

QUESTION 99

Which SMLT resiliency feature uses the Soft Down option?

- A. extended Control Packet limit (ext-CP limit)
- B. discards untagged frames
- C. Simple Loop Prevention Protocol (SLPP)
- D. virtual Link Aggregation Control Protocol (VLACP)

Correct Answer: A

Section: (none)

Explanation

Explanation/Reference:

QUESTION 100

A technician is configuring an Ethernet Routing Switch (ERS) 5520-24T for the edge of the Converged Campus network. in band communication to edge switch is a customer design requirement. Which two VLANs are acceptable VLANs to use for the switch/stack IP addresses? (Choose two)

- A. default
- B. voice
- C. data
- D. management

Correct Answer: CD

Section: (none)

Explanation

Explanation/Reference:

QUESTION 101

1ST configuration using the show mlt ist info command, which IP address should be in the IP ADDRESS column?

```
Exhibit Window
47.160.128.215 - PuTTY
EPSS600#1:5# show mlt ist info
-----
                          Mlt IST Info
-----
MLT   IP          VLAN   ENABLE   IST
ID    ADDRESS      ID     IST      STATUS
-----
EPSS600#1:5#
```

- A. the IP address of the ISTVLAN on the local switch
- B. the IP address of the IST VL AN on the peer switch
- C. the IP address of the IST on the peer switch
- D. the management IP address of the peer switch



Correct Answer: B

Section: (none)

Explanation

Explanation/Reference:

QUESTION 102

Which statement describes how to configure Simple Loop Prevention protocol (SLPP) Rx?

- A. SLPP is configured on the edge switch ports that connect to the core switch cluster.
- B. SLPP is configured on the core switch cluster ports that connect to the edge switch.
- C. SLPP is configured on the Inter Switch Trunk (1ST) ports of the core switch cluster.
- D. SLPP is configured on the uplink ports of both the core switch cluster and the edge switch

Correct Answer: D

Section: (none)

Explanation

Explanation/Reference:

QUESTION 103

Which command mode contains the commands needed to work on software licenses?

- A. User Exec
- B. Privileged Exec
- C. Global Configuration
- D. Software Configuration

Correct Answer: A

Section: (none)

Explanation

Explanation/Reference:

QUESTION 104

The goal of the Converged Campus architecture is to provide a highly reliable infrastructure with sub second failover preventing any interruption of traffic on the network. HMD primary benefits of this design goal? (Choose two)

- A. in the event of a failure, no loss of connectivity or application availability will be experienced by the end user
- B. The architecture provides high performance Layer 3 switching, resiliency, security, and services.
- C. This design goal provides numerous connectivity options including Asynchronous Transfer Mode (ATM), Packet over SONET (POS) and 10 gigabit Ethernet.
- D. The ability to provide hitless software upgrades for the core of the network.

Correct Answer: AD

Section: (none)

Explanation

Explanation/Reference:

QUESTION 105

When configuring Ethernet Routing Switch (ERS) 8600 using the default interface, the attempt to load an ACLI configuration fails because the default interface is the CLI.

How is the ACLI interface obtained?

- A. Change the interface type in the config.cfg file.
- B. Change the ACLI boot flag and save the boot configuration file.
- C. exits the CLI and chooses ACLI at the interface manager prompt.
- D. Use the abort command and enter "no" at the default interface prompt

Correct Answer: C

Section: (none)

Explanation

Explanation/Reference:

QUESTION 106

The User interface (UI) button on the Ethernet Routing Switch (ERS) 6500 can be used to temporarily reset a switch to the default IP address. Which two statements are true about the default IP address set via the UI button? (Choose two)

- A. The default IP address overrides the IP address currently in use by the switch stack.
- B. The default IP address overwrites the "configured" IP address settings that are set via console, CLI or Web.
- C. the default IP address changes if there is a change in the state of the switch, such as if the switch joins or leaves a stack.
- D. the default IP address is saved in NVRAM across resets of the switch/stack.

Correct Answer: AB

Section: (none)

Explanation

Explanation/Reference:

QUESTION 107

The edge has been configured; the core configuration can be verified. Which configuration is the last step in the verification process?

- A. MLT configuration check
- B. Ext CP limit configuration check
- C. SLPP configuration check
- D. VLACP configuration check

Correct Answer: C

Section: (none)

Explanation

Explanation/Reference:

right and modified.

QUESTION 108

Which VLAN/VLANs should be tagged on the IST for a proper functioning SMLT configuration?

- A. Only VLAN 101
- B. Only VLAN 1 and the IST
- C. Only the VLANs that are also tagged on the SMLT/SLT uplinks
- D. the IST VLAN and all the VLANs that are tagged on all SMLT/SLT links

Correct Answer: D

Section: (none)

Explanation

Explanation/Reference:

QUESTION 109

A technician is configuring an Ethernet routing switch (ERS)-24T-PWR, and to add ports 10 through 20 to VLAN 100. Which ACLI command is used to accomplish this task?

- A. 5520-24-PWR (config) # vlan members add 100 10-20
- B. 5520-24-PWR (config) # vlan 100 add members 10-20
- C. 5520-24-PWR (config-vlan) # members add 100 10-20
- D. 5520-24-PWR (config-if) #vlan 100 add members 10-20

Correct Answer: A

Section: (none)

Explanation

Explanation/Reference:

QUESTION 110

A technician is preparing to update an Ethernet Routing Switch (ERS) 550D and needs to see the existing configuration. How is the information to be displayed?

- A. Use the show running-config command.
- B. Use the configuration parameter qualifier.
- C. Use the show alt-modules command.
- D. Use the verbose qualifier.

Correct Answer: A
Section: (none)
Explanation

Explanation/Reference:

QUESTION 111

Based on the command line output shown in the exhibit, how many Gigabit Ethernet ports are available on this Ethernet Routing Switch(ERS) 8600?

```

CT86101:5# show
CT86101:5/show# sys
CT86101:5/show/sys# info asic
#
# Asic Info :
# SlotNum|Name      |CardType   |MdaType |Part# Description
#
# Slot 1 8648TXE   0x20210130 0x00000000 IOM: PLRO=3   BFH: OP=3 THUX=2 RARU=4 CPLD=5
# Slot 2 8608GBE   0x20325108 0x00000000 IOM: GMAC=5   BFH: OP=3 TMUX=2 RARU=4 CPLD=9
# Slot 3 8632TXE   0x20210120 0x00000000 IOM: PLRO=3   GMAC=5 BFH: OP=3 THUX=2 RARU=4 CPLD=9
# Slot 4 8632TXE   0x20210120 0x00000000 IOM: PLRO=3   GMAC=5 BFH: OP=3 THUX=2 RARU=4 CPLD=9
# Slot 5 8691SF     0x200e0100 0x00000000 CPU: CPLD=19  HEZZ=2 SFH: OP=3 THUX=2 SWIP=3 FAD=1 CF=16
# Slot 6 --         0x00000001 0x00000000
# Slot 7 8632TXE   0x20210120 0x00000000 IOM: PLRO=3   GMAC=5 BFH: OP=3 THUX=2 RARU=4 CPLD=9
# Slot 8 8632TXE   0x20210120 0x00000000 IOM: PLRO=3   GMAC=5 BFH: OP=3 THUX=2 RARU=4 CPLD=9
# Slot 9 8608GBE   0x20325108 0x00000000 IOM: GMAC=5   BFH: OP=3 THUX=2 RARU=4 CPLD=9
# Slot 10 8632TXE  0x20210120 0x00000000 IOM: PLRO=3   GMAC=5 BFH: OP=3 THUX=2 RARU=4 CPLD=9
CT86101:5/show/sys#

```

- A. 16
- B. 24

- C. 26
- D. 28

Correct Answer: A
Section: (none)
Explanation

Explanation/Reference:

QUESTION 112

An Ethernet Routing Switch (ERS) 5000 Series Release 6.2 Is installed in environment.



```
ERS 8610cc
ECT86101:5#
ECT86101:5#
ECT86101:5#
ECT86101:5#
ECT86101:5#
ECT86101:5#
ECT86101:5#
ECT86101:5# show
ECT86101:5/show# sys
ECT86101:5/show/sys# info ASIC
#
# ASIC Info :
# SlotNum|Name |CardType |MdaType |Parts Description
#
# Slot 1 8648TXE 0x20210130 0x00000000 ION: PLRO=3 BFM: OP=3 THUX=2 RARU=4 CPLD=5
# Slot 2 8608GBE 0x20325108 0x00000000 ION: GMAC=5 BFM: OP=3 THUX=2 RARU=4 CPLD=9
# Slot 3 8632TXE 0x20210120 0x00000000 ION: PLRO=3 GMAC=5 BFM: OP=3 THUX=2 RARU=4 CPLD=9
# Slot 4 8632TXE 0x20210120 0x00000000 ION: PLRO=3 GMAC=5 BFM: OP=3 THUX=2 RARU=4 CPLD=9
# Slot 5 8691SF 0x200e0100 0x00000000 CPU: CPLD=19 HEZZ=2 SFM: OP=3 THUX=2 SWIP=3 FAD=1 CF=16
# Slot 6 -- 0x00000001 0x00000000
# Slot 7 8632TXE 0x20210120 0x00000000 ION: PLRO=3 GMAC=5 BFM: OP=3 THUX=2 RARU=4 CPLD=9
# Slot 8 8632TXE 0x20210120 0x00000000 ION: PLRO=3 GMAC=5 BFM: OP=3 THUX=2 RARU=4 CPLD=9
# Slot 9 8608GBE 0x20325108 0x00000000 ION: GMAC=5 BFM: OP=3 THUX=2 RARU=4 CPLD=9
# Slot 10 8632TXE 0x20210120 0x00000000 ION: PLRO=3 GMAC=5 BFM: OP=3 THUX=2 RARU=4 CPLD=9
ECT86101:5/show/sys#
```

TO UPGRADE TO A version that includes new features, which statement about licenses is true?

- A. licenses are associated with software releases, not license feature levels.
- B. Remove the old license from the switch and load a new license file
- C. The features designated to the license level are available as soon as the upgrade is completed.

D. Automatic Unit Replacement (AUR) automatically updates software feature license for any replacement stack unit, except the base unit.

Correct Answer: A

Section: (none)

Explanation

Explanation/Reference:

QUESTION 113

Ethernet Routing Switch (ERS) 5500 portfolio shares a number of common hardware features. Which feature is unique to the ERS 5530 and is not available on the other ERS 5500 switches?

- A. Universal Serial Bus (USB) port
- B. Network management Ethernet port
- C. User Interface push button
- D. Console serial port

Correct Answer: A

Section: (none)

Explanation

Explanation/Reference:



QUESTION 114

A switch duster core composed of two Ethernet Routing Switch (ERS) 8600 switches has been properly configured to support new edge switch stack 802.1Q correctly configured on the edge switch stack. What will the switch core do with packets arriving from this edge stack?

- A. It will forward the packets to the Switch CPU.
- B. it will place them in the data VLAN.
- C. Place them in the default VLAN (VLAN1)
- D. It will discard the packets

Correct Answer: AB

Section: (none)

Explanation

Explanation/Reference:

QUESTION 115

The SNMP counters check for authorization failures and other types error conditions. Which of these SNMP error conditions is displayed in Enterprise Device Manager?

- A. PCAP packet capture counters
- B. In Bad Community Names counters
- C. Fan Failure packet counters
- D. Power Supply Failure packet counters

Correct Answer: D

Section: (none)

Explanation

Explanation/Reference:

QUESTION 116

What does the trace level 9 3 command accomplish?

- A. It captures BGP events at a terse level.
- B. It captures packets copied to the CPU at a verbose level.
- C. It shows CPU utilization.
- D. It captures RCC IP events at verbose level.



Correct Answer: B

Section: (none)

Explanation

Explanation/Reference:

QUESTION 117

The attempt to manage an Ethernet Routing Switch (ERS) 8000 using a Virtual Route Redundancy Protocol (VRRP) address was not successful. What is causing this problem?

- A. The virtual router identifier is 0.
- B. The data center interface is set as a critical IP interface.

- C. A real IP address is required for management access not a VRRP address.
- D. The virtual router identifier is configured for the VRRP IP address owner.

Correct Answer: C

Section: (none)

Explanation

Explanation/Reference:

QUESTION 118

After experiencing issues with XFPs, the show sys pluggable-optical-modules info CLI commands is used to find that the switch not recognize the XFPs. Which other method can be used to view the XFP compatibility?

- A. Check for port alarms
- B. Show DWDM-XFP {default}.
- C. Use the monitor sys tech info command to monitor for any changes in compatibility.
- D. Use enterprise Device Manager and select the Edit, Port, General tab from the navigation pane to display any XFP compatibility issues.

Correct Answer: D

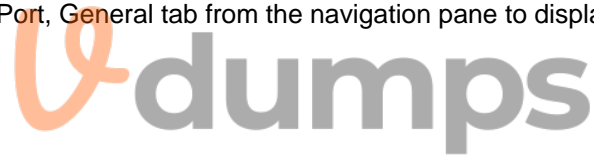
Section: (none)

Explanation

Explanation/Reference:

QUESTION 119

Refer to the exhibit.



```
47.160.128.215 - PuTTY
-----
Mlt IST Info:
-----
Mlt  IP          VLAN  ENABLE  IST
II   ADDRESS     ID    IST     STATUS
-----
ERS8600#1:5#
```

When checking an Inter Switch Trunks (IST) configuration using the show mlt ist info command as shown in the exhibit, which IP address should be in the IP ADDRESS column?

- A. The IP address of the IST VLAN on the local switch.
- B. The IP address of the IST VLAN on the peer switch.
- C. The IP address of the first IST port on the peer switch.
- D. The management IP address of the peer switch.

Correct Answer: B

Section: (none)

Explanation

Explanation/Reference:

QUESTION 120

Traceroute allows a route to be traced to a network using an Ethernet Routing Switch (ERS) 8600 CLI command. How could you use it to limit the number of hops the traceroute reports?

- A. Configure the P (base UDP port) to the number of maximum number hops.
- B. Configure the q (number of probes per TTL) to the number maximum number of hops.

- C. Configure the m (maximum TTL value) to the number of maximum number of hops.
- D. Configure the w (wait time per probe) to the number of maximum number of hops.

Correct Answer: C

Section: (none)

Explanation

Explanation/Reference:

QUESTION 121

Syslog in the Ethernet Routing Switch (ERS) 8600 allows the mapping of ERS 8600 errors to specified to be specified to the facility local 0-local 7. What is another place of information that syslog provides.

- A. Security level
- B. Message frequency
- C. Syslog table location
- D. System status

Correct Answer: A

Section: (none)

Explanation

Explanation/Reference:



QUESTION 122

When configuring a new Ethernet Routing Switch (ERS) 8000 using the default interface, the attempt to load an ACLI configuration fails because the default interface is the CLI.

How is the ACLI interface obtained?

- A. Change the interface type in the config.cfg file.
- B. Change the ACLI boot flag and save the boot configuration file.
- C. Exit the CLI and choose ACLI at the interface manager prompt.
- D. Use the abort command and enter `no` at the default interface.

Correct Answer: C

Section: (none)

Explanation

Explanation/Reference:

QUESTION 123

Which CLI command is used to validate that synchronization for High Availability mode is set correctly?

- A. Show ha
- B. Show ha-all
- C. Show ha-state
- D. Show ha-sync

Correct Answer: C

Section: (none)

Explanation

Explanation/Reference:

QUESTION 124

What does Ping snoop identify?

- A. The path that IP traffic takes over an MLT or SMLT
- B. The rate of IP traffic flow
- C. Which port filter is best to use on MLT networks
- D. Rate limiting for ICMP traffic

Correct Answer: A

Section: (none)

Explanation

Explanation/Reference:

QUESTION 125

Consider the following port conditions on an Ethernet Routing Switch (ERS) 8648GTRS 10/100/1000 Ethernet I/O module:

Left LED green
Right LED flashing



What is the status of the port?

- A. The link speed is 100 Mbp, and the port is disabled.
- B. The link speed is 1000 Mbps, and the port is disabled.
- C. The link speed is 100 Mbps, and the port is passing traffic.
- D. The link speed is 1000 Mbps, and the port is passing traffic.

Correct Answer: D

Section: (none)

Explanation

Explanation/Reference:

QUESTION 126

Refer to the exhibit.

```
8600-A1:5> show slot
-----
Hardware Information: Time: Sun Mar 12 11:22:50 2012 MDT
-----
#
#ASIC Info :
# SlotNum|Name      |CardType  |MdaType    |Parts Description
#
# Slot 1  --      0x00000001
# Slot 2  8683KLR  0x24334103 0x00000000 RSP=25 CLUE=2 F2I=4 F2E=3 FTMUX=17 CC=
3 FOQ=267 DPC=194 BMC=776 PIM=0 MAC=0
# Slot 3  --      0x00000001
# Slot 4  8648GTR  0x24220130 0x00000000 RSP=25 CLUE=2 F2I=4 F2E=3 FTMUX=17 CC=
3 FOQ=267 DPC=194 BMC=776 PIM=3 MAC=3
# Slot 5  8895SF   0x200e1100 0x00000000 CPU: BDLB=21 glue=14 SFM: OP=3 TMUX=2
SUIP=23 FAD=16 CF=238
# Slot 6  --      0x00000001
8600-A1:5>
```

Based on the command line output shown in the exhibit, how many Gigabit Ethernet ports are available on this Ethernet Routing Switch (ERS) 8600?

- A. 3
- B. 48
- C. 52
- D. 83

Correct Answer: B

Section: (none)

Explanation

Explanation/Reference:

QUESTION 127

A campus network requirement is to introduce Virtual Routing and Forwarding (VRF) in the existing Ethernet Routing Switch (ERS) 8600-based core. The technician has to configure VRF on the ERS 8600. Which statement represents the order for configuring a new VRF?

- A. Creating a new VLAN, add an IP address to the VLAN, create the VRF in the VLAN configuration.
- B. Create VRF, change context to the new VRF, add an IP address, create a new VLAN, and move the VLAN to the new VRF.
- C. Create a VRF, change context to the new VRF, create a new VLAN, add an IP address to the VLAN.
- D. Create a VRF, create a new VLAN, move the VLAN to the new VRF, change context to the new VRF, and add an IP Address.

Correct Answer: D

Section: (none)

Explanation

Explanation/Reference:

QUESTION 128

A technician is configuring an InterSwitch Frank (IST) for Split Multi-Link Franking (SMLT). Which statement about how the IST is addressed is true?

- A. Configure the IP address of the ports that comprise the IST.
- B. No address configurations are required when configuring an IST.
- C. Configure the IP address of the VLAN that was created for the IST.
- D. Configure the MAC addresses of the switches on each end of the IST.

Correct Answer: C

Section: (none)

Explanation

Explanation/Reference:

QUESTION 129

What is the underlying dynamic link state routing protocol used for the implementation of the Avaya Enterprise Fabric?

- A. OSPF
- B. OSPFv3
- C. IS-IS
- D. SPBV

Correct Answer: B

Section: (none)

Explanation

Explanation/Reference:

corrected.

QUESTION 130

By default the ERS 8000 is configured for warm standby. After installation of a new ERS solution with dual CPUs, which three actions need to be Perform on the ERS configuration to ensure high availability mode is enabled and will function correctly? (Choose three)

- A. Set the high availability CPU boot flag to true.
- B. Set the warm standby CPU hoot flag to false.
- C. Set the save to standby CPU boot flag to true.
- D. Save the boot.cfg config file and reset the switch to activate the changes.
- E. Install the high availability license file.

Correct Answer: ADE

Section: (none)

Explanation

Explanation/Reference:

QUESTION 131

The Ethernet Routing Switch (ERS) 8600 switch includes a means to fine tune the memory resources by allowing the record allocations to be allowed. An ERS 8600 running Release 5.0 needs to be configured to be optimized for multicast traffic.

Which command alters the ERS 8600 to increase the default allocation of Multicast by 50 percent?

- A. Config sys set record record reserve MGID + 50
- B. Config sys set max-vlan-resource-reservation 4096
- C. Config sys set show sys mgid usage
- D. Config sys set multicast-resource-reservation 3073

Correct Answer: D

Section: (none)

Explanation

Explanation/Reference:

QUESTION 132

In a unified access solution that supports mobility, the configuration must allow for the creation of mobility tunnels to the remote switch and needs the reservation of a remote switch in mobility solution?

- A. Remote VLANs are dynamically created and will only contain tunnels.
- B. Mobility tunnels are created when needed and mapped to pre-configured existing static VLANs.
- C. Remote VLANs are created with a valid IP address to the tunnel mapping based on the source network.
- D. The remote switch dynamically creates, adds and removes VLANs as required in a mobility solution.

Correct Answer: D

Section: (none)

Explanation

Explanation/Reference:

QUESTION 133

In a multicast campus, when should an ERS 8600 PIM interface be configured to run in passive mode?

- A. When the interface is used as an edge interface and is aggregating traffic.
- B. When the interface is used as a core interface and needs to limit PIM messages to reduce the system load.
- C. When there are no unicast routing paths.
- D. When more than one unicast routing protocol is in use.

Correct Answer: A
Section: (none)
Explanation

Explanation/Reference:

QUESTION 134

A split Multi-Link Trunking (SMLT) for switch clustering is being configured. Which statement is a configuring requirement for the SMLT?

- A. CP-Limit is configured on edge switch stacks.
- B. Neighboring edge switch stacks should be connected to each other via a DMLT connection to add resilient paths in the event of an SMLT failure.
- C. Alternate the primary paths of the SMLT connection to load balance the switch core.
- D. VLANs that are defined on the SMLT are also defined on the MLT that defines the core inter Switch Trunks (IST).

Correct Answer: D
Section: (none)
Explanation

Explanation/Reference:



QUESTION 135

A technician is setting up switch clustering using Split Multi-Link Trunking (SMLT). Which link is configured between the SMLT cluster switches?

- A. Inter-Switch Trunk (IST)
- B. Multi link Trunk (MLT)
- C. Split Multi Link Trunk (SMLT)
- D. LAG Trunk

Correct Answer: A
Section: (none)
Explanation

Explanation/Reference:

QUESTION 136

OSPF computes the shortest path to destination subnets, whereas, IS-IS, as used with SPBM works differently. Which parameter does IS-IS use to compute the

path?

- A. Customer MACs
- B. Backbone MGIDs
- C. VLAN MAC IDs
- D. Backbone nodal MAC addresses

Correct Answer: D

Section: (none)

Explanation

Explanation/Reference:

QUESTION 137

When configuring an Ethernet Routing Switch (ERS) 8000 redundant installation for warm standby, which protocol is used to give the fastest recalculation of a large layer 3 topology by the Standby CPU, after a Master CPU failure?

- A. STP
- B. RIP
- C. OSPF
- D. BGP



Correct Answer: C

Section: (none)

Explanation

Explanation/Reference:

QUESTION 138

For a Converged campus network, which configuration changes is recommended for the default VLAN (VLAN 1)

- A. Assign an IP address to the default VLAN for switch management.
- B. Remove all port members from default VLAN 1.
- C. Configure QoS on the default VLAN to support voice traffic.
- D. Remove spanning tree from the default VLAN.

Correct Answer: A

Section: (none)

Explanation

Explanation/Reference:

QUESTION 139

When configuring an Ethernet Routing Switch (ERS) 8000 split Multi-Link Trunking (SMLT), protection against an edge switch in the factory default condition must be taken into consideration. Which parameter will help prevent loops on the SMLT ports?

- A. Discarded Untagged Frames
- B. Discard Looped Frames
- C. Spanning Tree Enable
- D. LACP Enable

Correct Answer: A

Section: (none)

Explanation

Explanation/Reference:

corrected and modified.



QUESTION 140

When configuring link aggregation, a technician created a Distributed Multi-Link Trunk (DMLT) group on the Edge switch to the switch cluster core. What gets distributed?

- A. Access ports
- B. Discard Looped Frames
- C. Spanning Tree Enable
- D. LACP Enable

Correct Answer: A

Section: (none)

Explanation

Explanation/Reference:

QUESTION 141

What is the front panel port configuration for the Ethernet Routing Switch (ERS) 2550T-PWR?

- A. 48 10/100 BaseT ports (PoE on 48 ports)
Two combo 10/100/1000BaseT or SFP port
- B. 48 10/100BaseT ports (PoE on 24 ports)
two combo 10/100/1000BaseT or SFP port
- C. 50 10/100BaseT ports (PoE on 25 ports)
two combo 10/100/1000BaseT or SFP port
- D. 50 10/100BaseT ports (PoE on 50 ports)
two combo 10/100/1000BaseT or SFP port

Correct Answer: B

Section: (none)

Explanation

Explanation/Reference:

QUESTION 142

A technician is configuring Multi Link trunking (SMLT) for an Ethernet routing switch (ERS) 8600 switch cluster. To ensure the fastest possible recovery time, which feature should be avoided?

- A. VLACP
- B. MLT
- C. 802.3 ad
- D. SLPP

Correct Answer: A

Section: (none)

Explanation

Explanation/Reference:

QUESTION 143

A technician wants to use the New Unit Quick Configuration feature to add new units to a stack of Ethernet Routing Switch (ERS) 5000 switches without. As well as enabling the feature, what else must be done to use the New Unit Quick Communication feature?

- A. Save a template on the base unit

- B. Save a template on the backup unit
- C. Insert a new switch in the stack
- D. Apply the feature license

Correct Answer: C

Section: (none)

Explanation

Explanation/Reference:

QUESTION 144

As stated in RFC 2338. (Virtual Router Redundancy Protocol) VRRP management problems can occur if the address used by the management station is used incorrectly. Which two statements describe how to avoid management problems? (Choose two)

- A. A VRRP interface MUST accept packets addressed to the IP address (es) associated with the virtual router if it is not the IP address owner (priority = 255)
- B. A VRRP interface MUST NOT accept packets addressed to the IP address (es) associated with the virtual router if it is the IP address owner. (Priority=255)
- C. A VRRP interface MUST NOT accept packets addressed to the IP address (es) associated with the virtual router if it is not the IP address owner (priority = 255)
- D. A VRRP interface MUST accept packets addressed to the IP address (es) associated with the virtual router if it is the IP address owner (priority = 255)

Correct Answer: CD

Section: (none)

Explanation

Explanation/Reference:

QUESTION 145

A technician is configuring 802.1 Q tagging, VLACP with short timeout, untagged frames to be discarded. Which part of the network is being configured?

- A. layer 2 core
- B. layer 3 core
- C. the edge
- D. the uplinks

Correct Answer: D

Section: (none)

Explanation

Explanation/Reference:

QUESTION 146

Where is the rate-limit feature of the Converged Campus architecture limited?

- A. uplink ports on the core switches
- B. access ports on the edge switches
- C. inter Switch Trunk ports on the core switches
- D. uplink ports on the edge switches

Correct Answer: ABD

Section: (none)

Explanation

Explanation/Reference:

Explanation:

We need to rate limit on access to avoid over utilisation by a single host/server as well as from access to upwards so there if there is some issue (broadcast storm or else) that should not be replicated to rest of switching cloud.

QUESTION 147

A technician is implementing a new network that contains eight Ethernet routing switch (ERS) 8600 switches and uses advanced features. Where are two possibilities for generating license? (Choose two)

- A. one individual advanced feature license for each ERS 8600 chassis
- B. one multi-chassis license using multiple MAC addresses
- C. one advanced feature license for the network
- D. one premier feature license for the network
- E. one site license per ERS 8600

Correct Answer: CE

Section: (none)

Explanation

Explanation/Reference:

QUESTION 148

When configuring LINK aggregation, a technician created a Distributed Multi-Link Trunk (DMLT) group on the edge connecting switch cluster core. What gets

distributed?

- A. Access ports
- B. VLANS
- C. Uplinks
- D. PVIDs

Correct Answer: C

Section: (none)

Explanation

Explanation/Reference:

QUESTION 149

What is a characteristic of Routed Split Multi-Link Trunking (RSMLT) configuration?

- A. RSMLT is only configured on edge SMLT connections.
- B. RSMLT uses priority values to distinguish between the primary and backup routers.
- C. RSMLT routers are implemented with Virtual Routing Forwarding (VRF)-Lite routers.
- D. RSMLT is always used in conjunction with routing protocols and SMLT connections.

Correct Answer: D

Section: (none)

Explanation

Explanation/Reference:

QUESTION 150

To provide load distribution across two or more equal cost paths in a Layer 3 routing environment, the ECMP feature can be used to maximize load sharing. Which two statements correctly describe the ECMP features? (Choose two)

- A. All ECMP next hop addresses are in the routing table
- B. ECMP keeps traffic between two IP addresses on one single path.
- C. All ECMP paths are active and forwarding traffic.
- D. ECMP routes apply to OSPF, RIP and BGP only.

Correct Answer: AC

Section: (none)

Explanation

Explanation/Reference:

QUESTION 151

A university campus network consists of an Ethernet Routing Switch (ERS) 8000 and Ethernet switches. Recently they implemented Routed Split Multi-Link Trunking (RSMLT) over a split Multi-Link Trunk (SMLT) configuration.

What is the advantage of implementing RSMLT over SMLT?

- A. RSMLT increases the distance of the SMLT core.
- B. RSMLT achieves better data distribution across the SMLT.
- C. RSMLT extends fast failover benefits to the routed portion of the network.
- D. RSMLT allows the addition new users in a separate building.

Correct Answer: C

Section: (none)

Explanation

Explanation/Reference:



QUESTION 152

A switch with Simple Loop Prevention Protocol (SLPP) did not detect a loop. What are two reasons this occurred? (Choose two.)

- A. SLPP was not globally enabled.
- B. A premier license for SLPP is needed.
- C. SLPP was not enabled on the VLAN where the loop originated.
- D. Extended CP limit on the transmitting port was not configured.

Correct Answer: AC

Section: (none)

Explanation

Explanation/Reference:

QUESTION 153

Which protocol can be used for end-to-end detection in a network as well as for point-to-point detection?

- A. LACP
- B. VLACP
- C. RSTP
- D. MSTP

Correct Answer: B

Section: (none)

Explanation

Explanation/Reference:

