

Microsoft.AZ-140.vJun-2024.by.TonyJen.102q

Number: AZ-140  
Passing Score: 800  
Time Limit: 120  
File Version: 21.0

**Exam Code: AZ-140**  
**Exam Name: Configuring and Operating Windows Virtual Desktop on Microsoft Azure**



## 01 - Plan an Azure Virtual Desktop Architecture

### QUESTION 1

You plan to deploy Azure Virtual Desktop. The deployment will use existing virtual machines.

You create a Azure Virtual Desktop host pool.

You need to ensure that you can add the virtual machines to the host pool.

What should you do first?

- A. Register the Microsoft.DesktopVirtualization provider.
- B. Generate a registration key.
- C. Run the Invoke-AzVMRunCommand cmdlet.
- D. Create a role assignment.

**Correct Answer: B**

**Section:**

**Explanation:**

Reference: <https://docs.microsoft.com/en-us/azure/active-directory-domain-services/tutorial-create-instance>

'Update DNS settings for the Azure virtual network With Azure AD DS successfully deployed, now configure the virtual network to allow other connected VMs and applications to use the managed domain. To provide this connectivity, update the DNS server settings for your virtual network to point to the two IP addresses where the managed domain is deployed.'

### QUESTION 2

You plan to deploy Azure Virtual Desktop to meet the department requirements shown in the following table.

Department	Required Windows Virtual Desktop resource	Number of users	GPU required
Research	Single-session desktop	10	No
Engineering	Multi-session desktop	50	Yes
IT	Multi-session desktop	50	No
Finance	RemoteApp	10	No

You plan to use Azure Virtual Desktop host pools with load balancing and autoscaling.

You need to recommend a host pool design that meets the requirements. The solution must minimize costs.

What is the minimum number of host pools you should recommend?

- A. 1
- B. 2
- C. 3
- D. 4

**Correct Answer: C**

**Section:**

**Explanation:**

You plan to use Azure Virtual Desktop host pools with load balancing and autoscaling.

You need to recommend a host pool design that meets the requirements. The solution must minimize costs. What is the minimum number of host pools you should recommend?

Reference: <https://docs.microsoft.com/en-us/azure/virtual-desktop/create-host-pools-azure-marketplace>

### QUESTION 3

Your company has a main office and two branch offices. Each office connects directly to the internet. The router in each branch office is configured as an endpoint for the following VPNs:

A VPN connection to the main office

A site-to-site VPN to Azure

The routers in each branch office have the Quality of Service (QoS) rules shown in the following table.

Name	Destination	Available bandwidth allocated
Rule1	VPN traffic to the main office	25%
Rule2	Site-to-site VPN traffic to Azure	25%
Rule3	HTTP/HTTPS traffic to all Azure and Microsoft 365 public IP addresses	25%
Rule4	Traffic to non-Microsoft internet addresses	25%

Users in the branch office report slow responses and connection errors when they attempt to connect to Azure Virtual Desktop resources.

You need to modify the QoS rules on the branch office routers to improve Azure Virtual Desktop performance.

For which rule should you increase the bandwidth allocation?

- A. Rule2
- B. Rule3
- C. Rule4
- D. Rule1

**Correct Answer: D**

**Section:**

**Explanation:**

Reference: <https://docs.microsoft.com/en-us/azure/virtual-desktop/rdp-quality-of-service-qos>

#### QUESTION 4

HOTSPOT

You plan to deploy Windows Virtual Desktop.

Users have the devices shown in the following table.

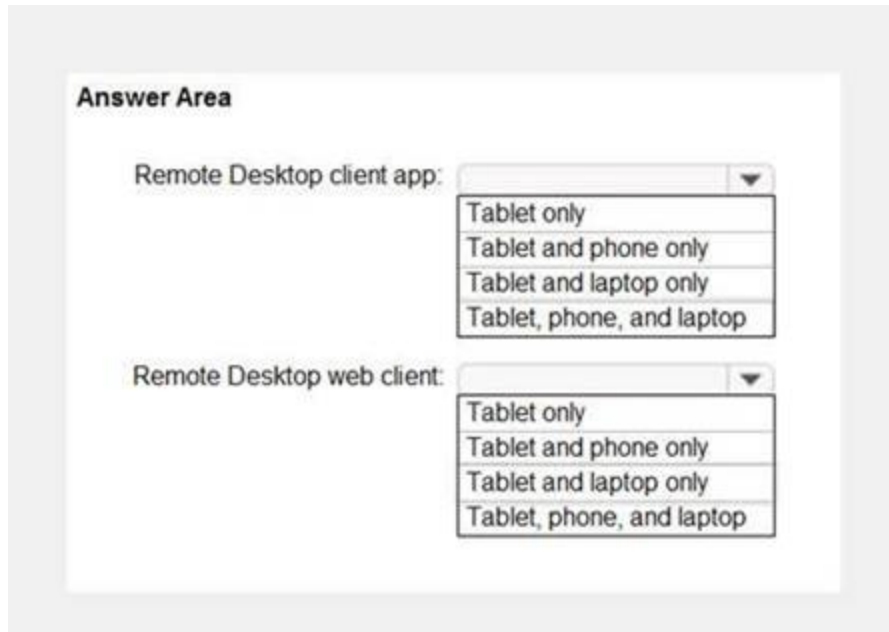
Type	Platform
Tablet	Windows 10 Pro
Phone	Android
Laptop	macOS

From which device types can the users connect to Windows Virtual Desktop resources by using the Remote Desktop client app and the Remote Desktop web client? To answer, select the appropriate options in the answer area.

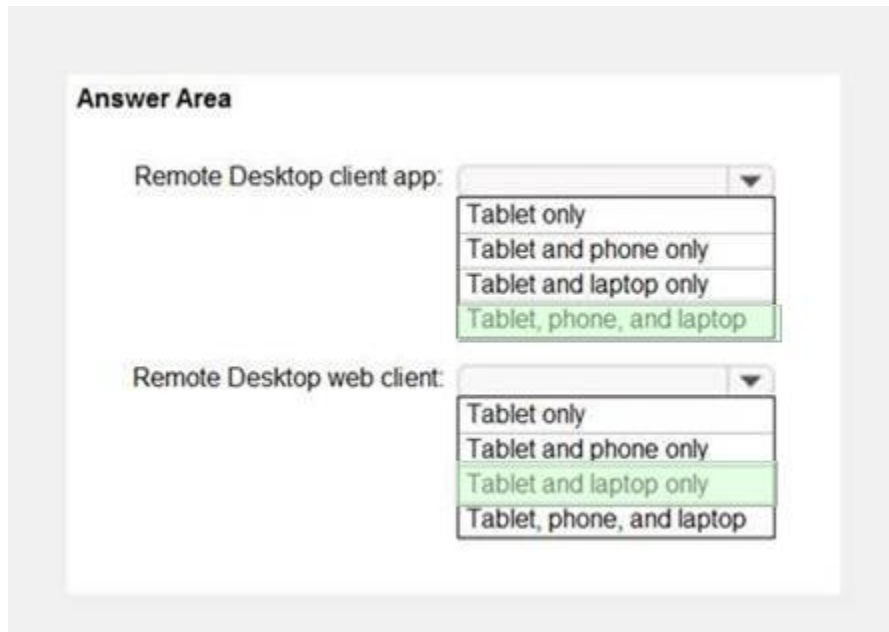
NOTE: Each correct selection is worth one point.

**Hot Area:**





**Answer Area:**



**Section:**

**Explanation:**

Reference:

<https://docs.microsoft.com/en-us/azure/virtual-desktop/connect-web>

<https://docs.microsoft.com/en-us/azure/virtual-desktop/connect-android>

<https://docs.microsoft.com/en-us/azure/virtual-desktop/connect-macos>

**QUESTION 5**

HOTSPOT

You have a Windows Virtual Desktop deployment.

You plan to create the host pools shown in the following table.

 **vdumps**

Name	Requirement
Pool1	<ul style="list-style-type: none"><li>• Will be directly assigned to users in the graphics department at your company</li><li>• Will run heavy graphic rendering and compute-intensive applications</li><li>• Must support premium storage</li></ul>
Pool2	<ul style="list-style-type: none"><li>• Pooled virtual machines for approximately 10 users</li><li>• Will run Microsoft Office 365 apps</li><li>• Will require calling and meeting features in Microsoft Teams</li><li>• Must support premium storage</li></ul>

You need to recommend the virtual machine size for each host pool. The solution must minimize costs. Which size should you recommend for each pool? To answer, select the appropriate options in the answer area. NOTE: Each correct selection is worth one point.

**Hot Area:**

**Answer Area**

Pool1:

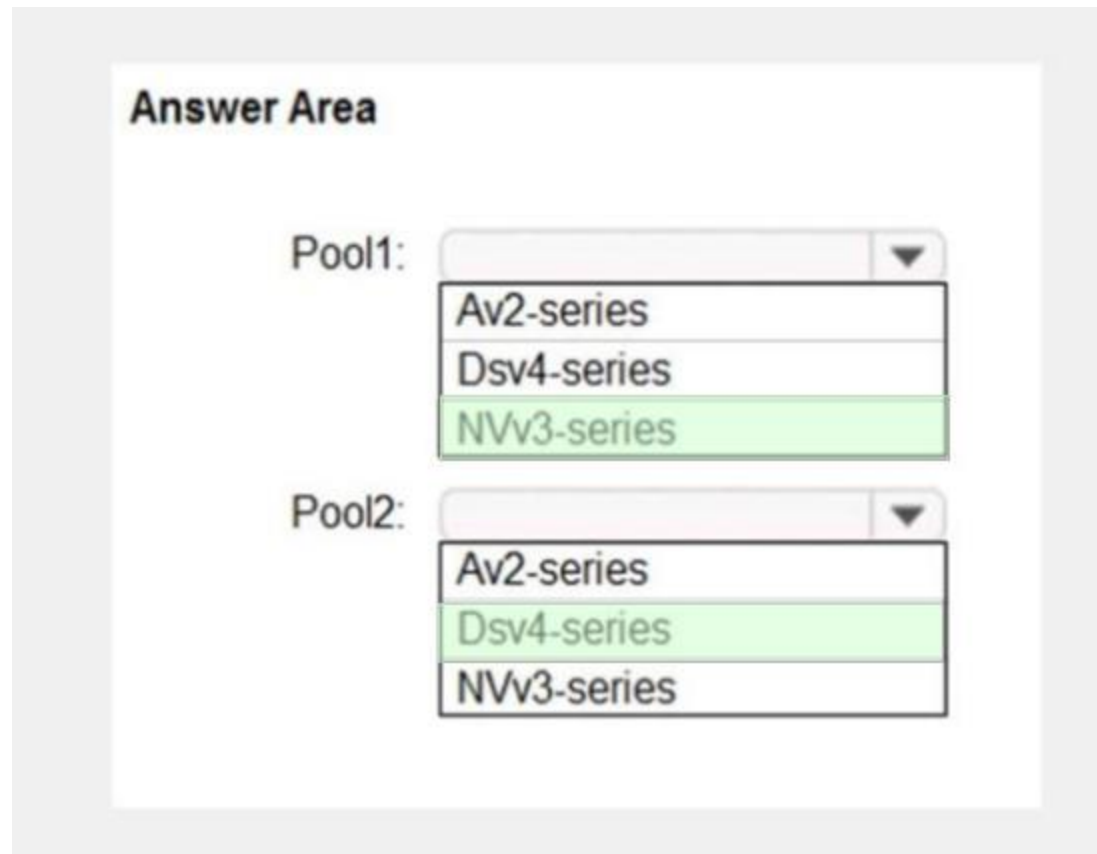
- Av2-series
- Dsv4-series
- NVv3-series

Pool2:

- Av2-series
- Dsv4-series
- NVv3-series

**Answer Area:**





**Section:**

**Explanation:**

Reference:

<https://docs.microsoft.com/en-us/azure/virtual-machines/sizes>

<https://docs.microsoft.com/en-us/azure/virtual-machines/nvv3-series>

<https://docs.microsoft.com/en-us/azure/virtual-machines/dv4-dsv4-series>



#### QUESTION 6

You are designing an Azure Virtual Desktop deployment.

You identify the network latency between the locations where users reside and the planned deployment. What should you use to identify the best Azure region to deploy the host pool?

- A. Azure Traffic Manager
- B. Azure Virtual Desktop Estimator
- C. Azure Monitor for Azure Virtual Desktop
- D. Azure Advisor

**Correct Answer: B**

**Section:**

**Explanation:**

Reference:

<https://azure.microsoft.com/en-gb/services/virtual-desktop/assessment/>

#### QUESTION 7

You have an Azure Virtual Desktop host pool named Pool1 in the East US region.

You have a storage account named storage1 that contains FSLogix profile containers. In the East US region, you have a shared image gallery named SG1 that contains a virtual machine image named Image1. Image1 is used to create new session hosts in Pool1.

You plan to deploy a new Azure Virtual Desktop host pool named Pool2 to the South India region.

You need to implement a session host deployment solution for Pool2 that meets the following requirements:

Image1 must replicate in the South India region.

The session hosts in Pool2 must be based on Image1.

Changes to Image1 must be available in the South India and East US regions.

What should you include in the solution?

- A. Create a new shared image gallery named SIG2 in the South India region. Upload a copy of Image1 to SIG2.
- B. Create a new Azure Storage account named storage2 in the South India region. Copy Image1 to a shared folder in storage2.
- C. From SIG1, update the replication for the latest image version of Image1.
- D. Configure geo-redundant storage (GRS) replication for storage1. Copy the VHD file of Image1 to the FSLogix profile container.

**Correct Answer: C**

**Section:**

**Explanation:**

Reference:

<https://docs.microsoft.com/en-us/azure/virtual-machines/shared-image-galleries>

### QUESTION 8

HOTSPOT

You have an Azure Virtual Desktop deployment.

Many users have iOS devices that have the Remote Desktop Mobile app installed.

You need to ensure that the users can connect to the feed URL by using email discovery instead of entering the feed URL manually.

How should you configure the \_msradc DNS record? To answer, select the appropriate options in the answer area.

NOTE: Each correct selection is worth one point.

**Hot Area:**

**Answer Area**

Record type:

Record value:

**Answer Area:**

dumps

**Answer Area**

Record type:

Record value:

**Section:**

**Explanation:**

Reference:

<https://jenzushsu.medium.com/configure-email-discovery-to-subscribe-to-your-windows-virtual-desktop-feed-49dbb8db553c>

<https://docs.microsoft.com/en-us/azure/virtual-desktop/connect-ios>

**QUESTION 9**

You have an Azure Active Directory (Azure AD) tenant named contoso.com and an Azure virtual network named VNET1.

To VNET1, you deploy an Azure Active Directory Domain Services (Azure AD DS) managed domain named litwareinc.com.

To VNET1, you plan to deploy a Azure Virtual Desktop host pool named Pool1.

You need to ensure that you can deploy Windows 10 Enterprise host pools to Pool1.

What should you do first?

- A. Modify the settings of the litwareinc.com DNS zone.
- B. Modify the DNS settings of VNET1.
- C. Add a custom domain name to contoso.com.
- D. Implement Azure AD Connect cloud sync.

**Correct Answer: A**

**Section:**

**Explanation:**

Reference: <https://docs.microsoft.com/en-us/azure/active-directory-domain-services/tutorial-create-instance>

'Update DNS settings for the Azure virtual network With Azure AD DS successfully deployed, now configure the virtual network to allow other connected VMs and applications to use the managed domain. To provide this connectivity, update the DNS server settings for your virtual network to point to the two IP addresses where the managed domain is deployed.'

**QUESTION 10**

You have the devices shown in the following table.

Name	Operating system
Device1	Windows 10 Home
Device2	Windows 8.1 Professional
Device3	Windows 10 IoT Enterprise

You plan to deploy Azure Virtual Desktop for client access to remove virtualized apps.



Which devices support the Remote Desktop client?

- A. Device1 and Device2 only
- B. Device1 and Device3 only
- C. Device1, Device2, and Device3
- D. Device1 only

**Correct Answer: B**

**Section:**

**Explanation:**

Reference: <https://docs.microsoft.com/en-us/windows-server/remote/remote-desktop-services/clients/windowsdesktop>

## 01 - Implement an Azure Virtual Desktop Infrastructure

### QUESTION 1

You deploy an Azure Virtual Desktop host pool named Pool1.

You have an Azure Storage account named store1 that stores FSLogix profile containers in a share named profiles. You need to configure the path to the storage containers for the session hosts.

Which path should you use?

- A. \\store1.blob.core.windows.net\profiles
- B. https://store1.file.core.windows.net/profiles
- C. \\store1.file.core.windows.net\profiles
- D. https://store1.blob.core.windows.net/profiles

**Correct Answer: C**

**Section:**

**Explanation:**

Reference: <https://docs.microsoft.com/en-us/azure/virtual-desktop/create-profile-container-adds>

### QUESTION 2

Note: This question-is part of a series of questions that present the same scenario. Each question-in the series contains a unique solution that might meet the stated goals. Some question-sets might have more than one correct solution, while others might not have a correct solution.

After you answer a question-in this section, you will NOT be able to return to it. As a result, these questions will not appear in the review screen. You have an Azure Virtual Desktop host pool that contains five session hosts. The session hosts run Windows 10 Enterprise multi-session. You need to prevent users from accessing the internet from Azure Virtual Desktop sessions. The session hosts must be allowed to access all the required Microsoft services. Solution: You configure rules in the network security group (NSG) linked to the subnet of the session hosts. Does that meet the goal?

- A. Yes
- B. No

**Correct Answer: A**

**Section:**

**Explanation:**

Reference:

<https://docs.microsoft.com/en-us/azure/virtual-network/tutorial-filter-network-traffic>

### QUESTION 3

Note: This question-is part of a series of questions that present the same scenario. Each question-in the series contains a unique solution that might meet the stated goals. Some question-sets might have more than one



correct solution, while others might not have a correct solution.

After you answer a question-in this section, you will NOT be able to return to it. As a result, these questions will not appear in the review screen. You have an Azure Virtual Desktop host pool that contains five session hosts. The session hosts run Windows 10 Enterprise multi-session. You need to prevent users from accessing the internet from Azure Virtual Desktop sessions. The session hosts must be allowed to access all the required Microsoft services. Solution: You configure the Address space settings of the virtual network that contains the session hosts. Does that meet the goal?

- A. Yes
- B. No

**Correct Answer: B**  
**Section:**

**QUESTION 4**

Note: This question-is part of a series of questions that present the same scenario. Each question-in the series contains a unique solution that might meet the stated goals. Some question-sets might have more than one correct solution, while others might not have a correct solution.

After you answer a question-in this section, you will NOT be able to return to it. As a result, these questions will not appear in the review screen. You have an Azure Virtual Desktop host pool that contains five session hosts. The session hosts run Windows 10 Enterprise multi-session. You need to prevent users from accessing the internet from Azure Virtual Desktop sessions. The session hosts must be allowed to access all the required Microsoft services. Solution: You modify the IP configuration of each session host.

Does that meet the goal?

- A. Yes
- B. No

**Correct Answer: B**  
**Section:**



**QUESTION 5**

**HOTSPOT**

You have a Azure Virtual Desktop host pool that has a max session limit of 15. Disconnected sessions are signed out immediately. The session hosts for the host pool are shown in the following exhibit.

Home > Windows Virtual Desktop > WVD

**WVD - Session hosts**  
Host pool

+ Add Refresh Assign Export to CSV

Search by name Status: 12 selected Drain mode: 2 selected

Name ↑↓	Status ↑↓	Drain mode ↑↓	Assigned User ↑↓	Active sessions	Resource group ↑↓
WVD-0	Available	Off	-	11	rg-wvd
WVD-1	Available	Off	-	2	RG-WVD
WVD-2	Available	On	-	0	RG-WVD
WVD-3	Available	Off	-	15	RG-WVD
WVD-5	Available	On	-	0	RG-WVD
WVD-6	Available	Off	-	13	RG-WVD
WVD-4	Unavailable	Off	-	0	RG-WVD

Use the drop-down menus to select the answer choice that completes each statement based on the information presented in the graphic.

NOTE: Each correct selection is worth one point.

Hot Area:

**Answer Area**

The host pool type is [answer choice].

pooled
personal with direct assignment
personal with automatic assignment

New sessions can occur on [answer choice] only.

WVD-0, WVD-1, and WVD-6
WVD-0, WVD-1, WVD-3, and WVD-6
WVD-0, WVD-1, WVD-2, WVD-5, and WVD-6

Answer Area:



**Answer Area**

The host pool type is [answer choice].

pooled
personal with direct assignment
personal with automatic assignment

New sessions can occur on [answer choice] only.

WVD-0, WVD-1, and WVD-6
WVD-0, WVD-1, WVD-3, and WVD-6
WVD-0, WVD-1, WVD-2, WVD-5, and WVD-6

**Section:**

**Explanation:**

Reference:

<https://docs.microsoft.com/en-us/azure/virtual-desktop/set-up-scaling-script>

**QUESTION 6**

**HOTSPOT**

You have an Azure virtual machine named VM1 that runs Windows 10 Enterprise multi-session.

You plan to add language packs to VM1 and create a custom image of VM1 for an Azure Virtual Desktop host pool.

You need to ensure that modern apps can use the additional language packs when you deploy session hosts by using the custom image.

Which command should you run first? To answer, select the appropriate options in the answer area.

NOTE: Each correct selection is worth one point.

**Hot Area:**

**Answer Area**

`-TaskPath "\Microsoft\Windows\AppxDeploymentClient\" -TaskName`

Disable-ScheduledTask	"License Validation"
Enable-ScheduledTask	"Pre-staged app cleanup"
New-ScheduledTask	"RemoteFXvGPUDisableTask"
Start-AppBackgroundTask	

**Answer Area:**

**Answer Area**

`-TaskPath "\Microsoft\Windows\AppxDeploymentClient\" -TaskName`

Disable-ScheduledTask	"License Validation"
Enable-ScheduledTask	"Pre-staged app cleanup"
New-ScheduledTask	"RemoteFXvGPUDisableTask"
Start-AppBackgroundTask	

**Section:**

**Explanation:**

Reference:

<https://docs.microsoft.com/en-us/azure/virtual-desktop/language-packs>

<https://docs.microsoft.com/en-us/troubleshoot/windows-server/deployment/issues-appx-cleanup-maintenance-task>

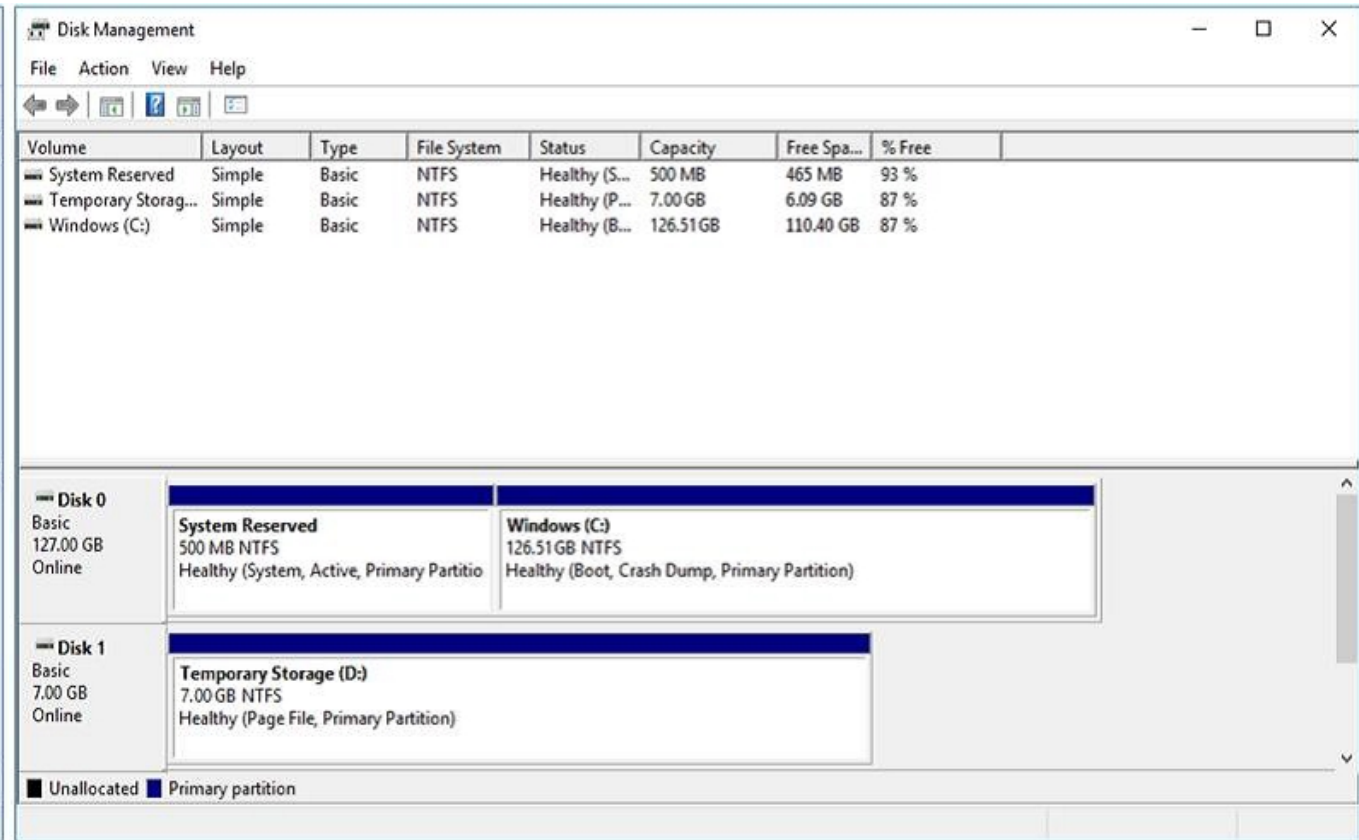
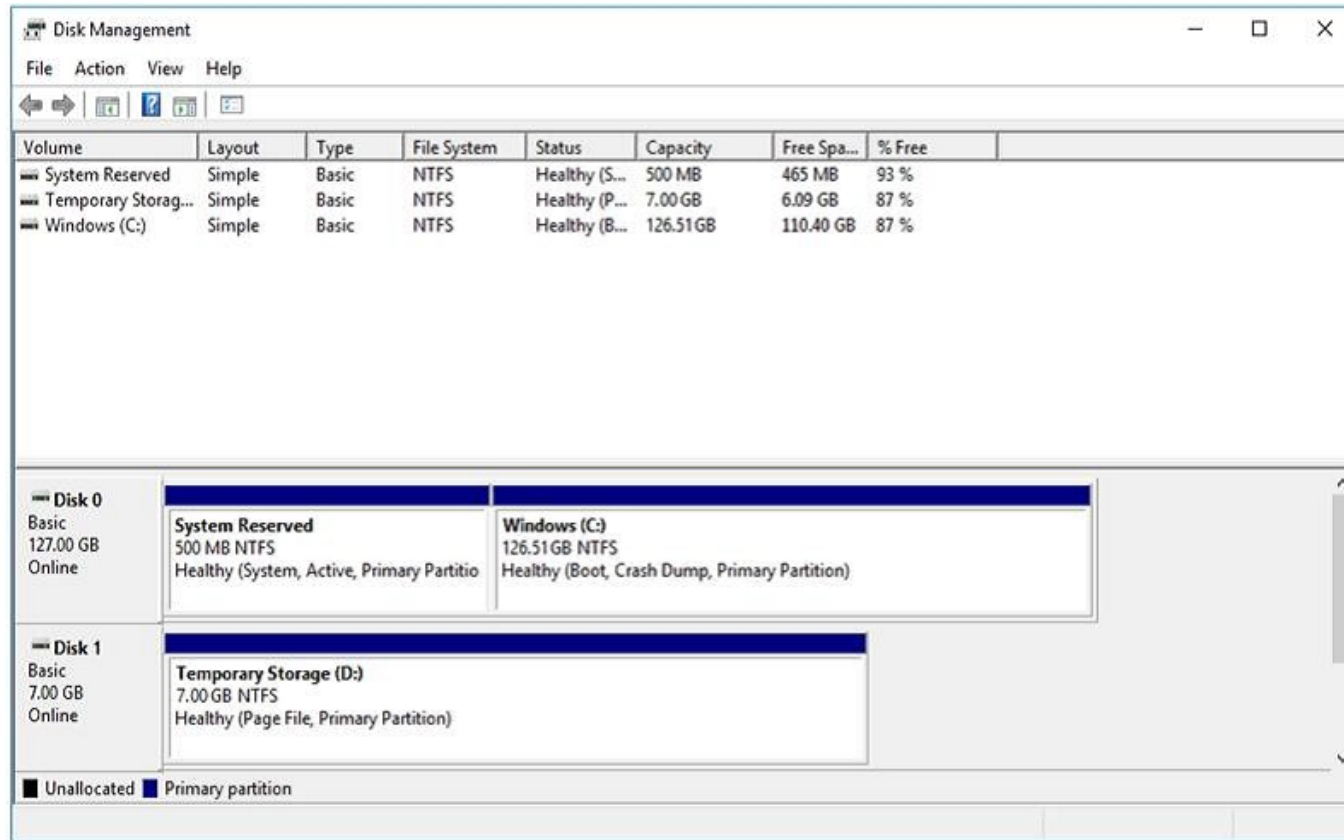
<https://docs.microsoft.com/en-us/powershell/module/scheduledtasks/disable-scheduledtask?view=windowsserver2019-ps>

**QUESTION 7**

**DRAG DROP**

You have a Azure Virtual Desktop deployment.

You have a session host named Host1 that has the disk layout shown in the exhibit. (Click the Exhibit tab.)

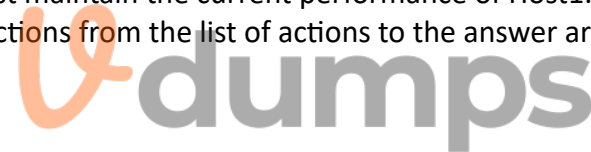


You plan to deploy an app that must be installed on D. The app requires 500 GB of disk space.

You need to add a new data disk that will be assigned the drive letter D. The solution must maintain the current performance of Host1.

Which four actions should you perform in sequence? To answer, move the appropriate actions from the list of actions to the answer area and arrange them in the correct order.

Select and Place:



Actions

- Move the page file to drive C.
- Move the page file to Temporary Storage.
- Change the drive letter of Temporary Storage (D:).
- Mark Temporary Storage (D:) as **Active**.
- Add the new disk and assign drive D.
- Move the page file to System Reserved.

Answer Area



Correct Answer:

Actions	Answer Area
	Move the page file to drive C.
	Change the drive letter of Temporary Storage (D:).
	<input type="radio"/> Add the new disk and assign drive D. <input type="radio"/> Move the page file to Temporary Storage.
Mark Temporary Storage (D:) as <b>Active</b> .	
Move the page file to System Reserved.	

**Section:**

**Explanation:**

Reference:

<https://www.azurecorner.com/change-temporary-drive-azure-vm-use-d-persistent-data-disks/>

**QUESTION 8**

You have an Azure Virtual Desktop host pool named Pool1 that contains the following:

A linked workspace named Workspace1

An application group named Default Desktop A session host named Host1

You need to add a new data disk.

What should you modify?

- A. Host1
- B. Workspace1
- C. Pool1
- D. Default Desktop

**Correct Answer: A**

**Section:**

**QUESTION 9**

You plan to deploy Azure Virtual Desktop session host virtual machines based on a preconfigured master image. The master image will be stored in a shared image. You create a virtual machine named Image1 to use as the master image. You install applications and apply configuration changes to Image1. You need to ensure that the new session host virtual machines created based on Image1 have unique names and security identifiers. What should you do on Image1 before you add the image to the shared image gallery?

- A. At a command prompt, run the set computername command.
- B. At a command prompt, run the sysprep command.
- C. From PowerShell, run the rename-computer cmdlet.
- D. From the lock screen of the Windows device, perform a Windows Autopilot Reset.

**Correct Answer: B**

**Section:**

**Explanation:**

Reference: <https://docs.microsoft.com/en-us/azure/virtual-machines/windows/prepare-for-upload-vhd-image#determine-when-to-use-sysprep>



**QUESTION 10**

You have a shared image gallery that contains the Windows 10 images shown in the following table.

Name	Location	Operating system state
Image1	West US	Generalized
Image2	West US	Specialized
Image3	West Europe	Generalized
Image4	West Europe	Specialized

You create an Azure Virtual Desktop deployment that has the following settings:

Host pool name: Pool1

Location: West US

Host pool type: Personal

Which images can you use for the session hosts?

- A. Image1 only
- B. Image1, Image2, Image3, and Image4
- C. Image2 only
- D. Image1 and Image2 only
- E. Image1 and Image3 only

**Correct Answer: E**

**Section:**

**Explanation:**

Reference: <https://azure.microsoft.com/en-in/blog/vm-image-blog-post/>



**QUESTION 11**

DRAG DROP

You plan to deploy Azure Virtual Desktop.

You need to create Azure NetApp Files storage to store FSLogix profile containers.

Which four actions should you perform in sequence after you register the NetApp Resource Provider? To answer, move the appropriate actions from the list of actions to the answer area and arrange them in the correct order.

NOTE: More than one order of answer choices is correct. You will receive credit for any of the correct orders you select.

**Select and Place:**

Actions	Answer Area
Create a NetApp account.	
Create and assign a managed identity.	
Create a volume.	⬅
Create a capacity pool.	➡
Create an Azure file share.	
Configure an Active Directory connection.	⬆

**Correct Answer:**

Actions	Answer Area
	Create a NetApp account.
Create and assign a managed identity.	Create a capacity pool.
	Configure an Active Directory connection.
	Create a volume.
Create an Azure file share.	

**Section:**

**Explanation:**

Reference:

<https://docs.microsoft.com/en-us/azure/virtual-desktop/create-fslogix-profile-container#make-sure-userscan-access-the-azure-netapp-file-share>

<https://docs.microsoft.com/en-us/azure/azure-netapp-files/azure-netapp-files-quickstart-set-up-account-create-volumes?tabs=azure-portal>

**QUESTION 12**

DRAG DROP

You have an Azure Virtual Desktop host pool named Pool1.

You need to ensure that you can create an Azure NetApp Files volume that will host user profiles for Pool1.

Which four actions should you perform in sequence? To answer, move the appropriate actions from the list of actions to the answer area and arrange them in the correct order.

NOTE: More than one order of answer choices is correct. You will receive credit for any of the correct orders you select.

Select and Place:

Actions	Answer Area
Register the NetApp Resource Provider.	
Create an Azure NetApp Files account.	
Create an Azure File Sync Storage Sync Service.	
Register for Azure NetApp Files.	
Create a capacity pool.	
Create a file share.	

Correct Answer:



## Actions

Create an Azure File Sync Storage Sync Service.

Create a file share.

## Answer Area

Register the NetApp Resource Provider.

Register for Azure NetApp Files.

Create an Azure NetApp Files account.

Create a capacity pool.



### Section:

### Explanation:

Reference:

<https://docs.microsoft.com/en-us/azure/azure-netapp-files/azure-netapp-files-quickstart-set-up-account-create-volumes?tabs=azure-portal>

### QUESTION 13

#### HOTSPOT

You have an Azure subscription that contains the virtual machines shown in the following table.

Name	Resource group	Location
VM1	RG1	West Europe
VM2	RG1	East US
VM3	RG2	West US

You create a shared image gallery as shown in the SharedGallery1 exhibit. (Click the SharedGallery1 tab.)

#### Create shared image gallery

Validation passed

Basics Tags Review + create

#### Basics

Subscription	Azure Pass - Sponsorship
Resource group	RG1
Region	West Europe
Name	SharedGallery1
Description	None

You create an image definition as shown in the Image1 exhibit. (Click the Image1 tab.)

## Add new image definition to shared image gallery

✓ Validation passed

Basics    Version    Publishing options    Tags    Review + create

### Basics

Subscription	Azure Pass - Sponsorship
Resource group	RG1
Region	East US
Target shared image gallery	SharedGallery1
Image definition name	Image1
Operating system	Windows
Operating system state	Specialized
Publisher	Contoso
Offer	WindowsServer2019
SKU	Datacenter

### Publishing options

Product name	None
EULA link	None
Description	None
Release notes URI	None
Privacy URI	None
Purchase plan name	None
Purchase plan publisher name	None
Recommended VM vCPUs	16-64
Recommended VM memory	500-1024GB
Excluded disk types	None
Image definition end of life date	None



For each of the following statements, select Yes if the statement is true. Otherwise, select No.  
NOTE: Each correct selection is worth one point.

### Hot Area:

Answer Area			
	Statements	Yes	No
	You can use the operating system disk of VM1 as a source for a version of Image1.	<input type="radio"/>	<input type="radio"/>
	You can use the operating system disk of VM2 as a source for a version of Image1.	<input type="radio"/>	<input type="radio"/>
	You can use the operating system disk of VM3 as a source for a version of Image1.	<input type="radio"/>	<input type="radio"/>

### Answer Area:

Answer Area			
Statements	Yes	No	
You can use the operating system disk of VM1 as a source for a version of Image1.	<input checked="" type="radio"/>	<input type="radio"/>	
You can use the operating system disk of VM2 as a source for a version of Image1.	<input checked="" type="radio"/>	<input type="radio"/>	
You can use the operating system disk of VM3 as a source for a version of Image1.	<input type="radio"/>	<input checked="" type="radio"/>	

**Section:**

**Explanation:**

Reference:

<https://www.robinhobo.com/windows-virtual-desktop-wvd-image-management-how-to-manage-and-deploy-custom-images-including-versioning-with-the-azure-shared-image-gallery-sig/>

**QUESTION 14**

You have an Azure Virtual Desktop host pool. The pool contains session hosts that run Windows 10 Enterprise multi-session. You connect to a Remote Desktop session on Pool1 and discover an issue with the frequency of screen updates. You need to identify whether the issue related to insufficient server, network, or client resources. The solution must minimize how long it takes to identify the resource type. What should you do?

- A. From within the current session, use the Azure Virtual Desktop Experience Estimator.
- B. From Azure Cloud Shell, run the Get-AzOperationalInsightsWorkspaceUsage cmdlet and specify the DefaultProfile parameter.
- C. From Azure Cloud Shell, run the Get-AzWvdUserSession cmdlet and specify the UserSessionId parameter.
- D. From within the current session, use Performance Monitor to display the values of all the RemoteFX Graphics(\*)\Frames Skipped/Second counters.

**Correct Answer: D**

**Section:**

**Explanation:**

Reference:

<https://docs.microsoft.com/en-us/azure/virtual-desktop/remotefx-graphics-performance-counters>

**QUESTION 15**

You have an Azure Active Directory (Azure AD) tenant named contoso.com.

You use a user account named Admin1 to deploy an Azure Active Directory Domain Services (Azure AD DS) managed domain named aaddscontoso.com to a virtual network named VNET1. You plan to deploy an Azure Virtual Desktop host pool named Pool1 to VNET1.

You need to ensure that you can use the Admin1 user account to deploy Windows 10 Enterprise session hosts to Pool1. What should you do first?

- A. Add Admin1 to the AAD DC Administrators group of contoso.com.
- B. Assign the Cloud device administrator role to Admin1.
- C. Assign a Microsoft 365 Enterprise E3 license to Admin1.
- D. Change the password of Admin1.

Correct Answer: A

Section:

Explanation:

Reference: <https://docs.microsoft.com/en-us/azure/virtual-desktop/create-host-pools-azure-marketplace?tabs=azure-portal>

#### QUESTION 16

HOTSPOT

You are automating the deployment of an Azure Virtual Desktop host pool.

You deploy the Azure Resource Manager (ARM) template shown in the following exhibit.

```
1 {
2   "$schema": "https://schema.management.azure.com/schemas/2015-01-01/
deploymentTemplate.json#",
3   "contentVersion": "1.0.0.0",
4   "parameters": {
5     "hostpools_HostPool2_name": {
6       "defaultValue": "HostPool2",
7       "type": "String"
8     }
9   },
10  "variables": {},
11  "resources": [
12    {
13      "type": "Microsoft.DesktopVirtualization/hostpools",
14      "apiVersion": "2020-11-02-preview",
15      "name": "[parameters('hostpools_HostPool2_name')]",
16      "location": "eastus",
17      "properties": {
18        "hostPoolType": "Personal",
19        "personalDesktopAssignmentType": "Automatic",
20        "maxSessionLimit": 999999,
21        "loadBalancerType": "Persistent",
22        "validationEnvironment": false,
23        "registrationInfo": {
24          "registrationTokenOperation": "None"
25        },
26        "preferredAppGroupType": "Desktop",
27        "startVMOnConnect": false
28      }
29    }
30  ]
31 }
```



```

1 {
2   "$schema": "https://schema.management.azure.com/schemas/2015-01-01/
deploymentTemplate.json#",
3   "contentVersion": "1.0.0.0",
4   "parameters": {
5     "hostpools_HostPool2_name": {
6       "defaultValue": "HostPool2",
7       "type": "String"
8     }
9   },
10  "variables": {},
11  "resources": [
12    {
13      "type": "Microsoft.DesktopVirtualization/hostpools",
14      "apiVersion": "2020-11-02-preview",
15      "name": "[parameters('hostpools_HostPool2_name')]",
16      "location": "eastus",
17      "properties": {
18        "hostPoolType": "Personal",
19        "personalDesktopAssignmentType": "Automatic",
20        "maxSessionLimit": 999999,
21        "loadBalancerType": "Persistent",
22        "validationEnvironment": false,
23        "registrationInfo": {
24          "registrationTokenOperation": "None"
25        },
26        "preferredAppGroupType": "Desktop",
27        "startVMOnConnect": false
28      }
29    }
30  ]
31 }

```

Use the drop-down menus to select the answer choice that completes each statement based on the information presented in the Dockerfile.  
NOTE: Each correct selection is worth one point.

**Hot Area:**

## Answer Area

Each session host in HostPool2 can contain

	▼
1 session	
15 sessions	
99,999 sessions	

Each time a user connects, the user will connect to

	▼
a RemoteApp named Desktop	
a permanently assigned virtual machine	
a random virtual machine in the host pool	

Answer Area:



## Answer Area

Each session host in HostPool2 can contain

	▼
1 session	
15 sessions	
99,999 sessions	

Each time a user connects, the user will connect to

	▼
a RemoteApp named Desktop	
a permanently assigned virtual machine	
a random virtual machine in the host pool	

Section:

Explanation:

Reference:

<https://docs.microsoft.com/en-us/azure/virtual-desktop/virtual-desktop-fall-2019/configure-host-pool-personal-desktop-assignment-type-2019>

## 02 - Implement an Azure Virtual Desktop Infrastructure

### Case study

This is a case study. Case studies are not timed separately. You can use as much exam time as you would like to complete each case. However, there may be additional case studies and sections on this exam. You must manage your time to ensure that you are able to complete all questions included on this exam in the time provided.

To answer the questions included in a case study, you will need to reference information that is provided in the case study. Case studies might contain exhibits and other resources that provide more information about the scenario that is described in the case study. Each question is independent of the other questions in this case study.

At the end of this case study, a review screen will appear. This screen allows you to review your answers and to make changes before you move to the next section of the exam. After you begin a new section, you cannot return to this section.

To start the case study

To display the first question in this case study, click the Next button. Use the buttons in the left pane to explore the content of the case study before you answer the questions. Clicking these buttons displays information such as business requirements, existing environment, and problem statements. If the case study has an All Information tab, note that the information displayed is identical to the information displayed on the subsequent tabs.

When you are ready to answer a question, click the Question button to return to the question.

### Overview

Contoso, Ltd. is a law firm that has a main office in Montreal and branch offices in Paris and Seattle. The Seattle branch office opened recently.

Contoso has an Azure subscription and uses Microsoft 365.

### Existing Infrastructure. Active Directory

The network contains an on-premises Active Directory domain named contoso.com and an Azure Active Directory (Azure AD) tenant. One of the domain controllers runs as an Azure virtual machine and connects to a virtual network named VNET1. All internal name resolution is provided by DNS server that run on the domain controllers.

The on-premises Active Directory domain contains the organizational units (OUs) shown in the following table.

Name	Description
MontrealUsers	An OU for all the users in the Montreal office: The OU syncs to Azure AD by using Azure AD Connect.
ParisUsers	An OU for all the users in the Paris office: The OU syncs to Azure AD by using Azure AD Connect.
SeattleUsers	An OU for all the users in the Seattle office: The OU does <b>NOT</b> sync to Azure AD.



The on-premises Active Directory domain contains the users shown in the following table.

Name	Container	Member of
Operator1	Users	Domain Admins
Operator2	MontrealUsers	Users
Operator3	SeattleUsers	Server Operators

The Azure AD tenant contains the cloud-only users shown in the following table.

Name	Role
Admin1	Virtual Machine Contributor
Admin2	Desktop Virtualization Contributor
Admin3	Desktop Virtualization Session Host Operator
Admin4	Desktop Virtualization Host Pool Contributor

### Existing Infrastructure. Network Infrastructure

All the Azure virtual networks are peered. The on-premises network connects to the virtual networks.

A virtual network named VNET4 was recently created and is peered to the other virtual networks. VNET4 does NOT contain any AVD virtual machines.

All servers run Windows Server 2019. All laptops and desktop computers run Windows 10 Enterprise.

Since users often work on confidential documents, all the users use their computer as a client for connecting to Remote Desktop Services (RDS).

In the West US Azure region, you have the storage accounts shown in the following table.

Name	Account kind	Performance
storage1	StorageV2	Standard
storage2	StorageV2	Premium
storage3	BlobStorage	Standard
storage4	StorageV1	Premium

Existing Infrastructure. Remote Desktop Infrastructure

Contoso has a Remote Desktop infrastructure shown in the following table.

Office	Description
Montreal	<p>A Windows Virtual Desktop deployment that runs Windows 10 Enterprise multi-session hosts. The deployment contains the following:</p> <ul style="list-style-type: none"> <li>• A host pool named Pool1</li> <li>• An application group named Group1</li> <li>• A workspace named Workspace1</li> <li>• Virtual machines that have a prefix of Pool1</li> </ul>
Seattle	<p>An on-premises virtual machine-based RDS deployment that has personal desktops. The personal desktop virtual machines have a prefix of Pool2.</p>
Paris	<p>An on-premises virtual machine-based RDS deployment that has pooled desktops. The pooled desktop virtual machines have a prefix of Pool3. User profile disks are used to preserve the user state.</p>



Requirements. Planned Changes

Contoso plans to implement the following changes:

Implement FSLogix profile containers for the Paris offices.

Deploy an Azure Virtual Desktop host pool named Pool4.

Migrate the RDS deployment in the Seattle office to Azure Virtual Desktop in the West US Azure region.

Requirements. Pool4 Configuration

Pool4 will have the following settings:

Host pool type: Pooled

Max session limit: 7

Load balancing algorithm: Depth-first

Images: Windows 10 Enterprise multi-session

Virtual machine size: Standard D2s v3

Name prefix: Pool4

Number of VMs: 5

Virtual network: VNET4

Requirements. Technical Requirements

Contoso identifies the following technical requirements:

Before migrating the RDS deployment in the Seattle office, obtain the recommended deployment configuration based on the current RDS utilization. For the Azure Virtual Desktop deployment in the Montreal office, disable audio output in the device redirection settings. For the Azure Virtual Desktop deployment in the Seattle office, store the FSLogix profile containers in Azure Storage. Enable Operator2 to modify the RDP Properties of the Azure Virtual Desktop deployment in the Montreal office. From a server named Server1, convert the user profile clicks to the FSLogix profile containers.

Ensure that the Pool1 virtual machines only run during business hours.

Use the principle of least privilege.

## QUESTION 1

Which setting should you modify for VNET4 before you can deploy Pool4?



- A. Service endpoints
- B. Address space
- C. DNS servers
- D. Access control (IAM)
- E. Peerings

**Correct Answer: C**

**Section:**

**Explanation:**

DNS should be configured to use an Active Directory Domain Controller.

#### QUESTION 2

You plan to implement the FSLogix profile containers for the Seattle office. Which storage account should you use?

- A. storage2
- B. storage4
- C. storage3
- D. storage1

**Correct Answer: A**

**Section:**

**Explanation:**

Reference:

<https://docs.microsoft.com/en-us/azure/virtual-desktop/store-fslogix-profile>

#### QUESTION 3

HOTSPOT

You are planning the deployment of Pool4.

What will be the maximum number of users that can connect to Pool4, and how many session hosts are needed to support five concurrent user sessions? To answer, select the appropriate options in the answer area. NOTE: Each correct selection is worth one point.

**Hot Area:**



**Answer Area**

Number of users that can connect to Pool4:

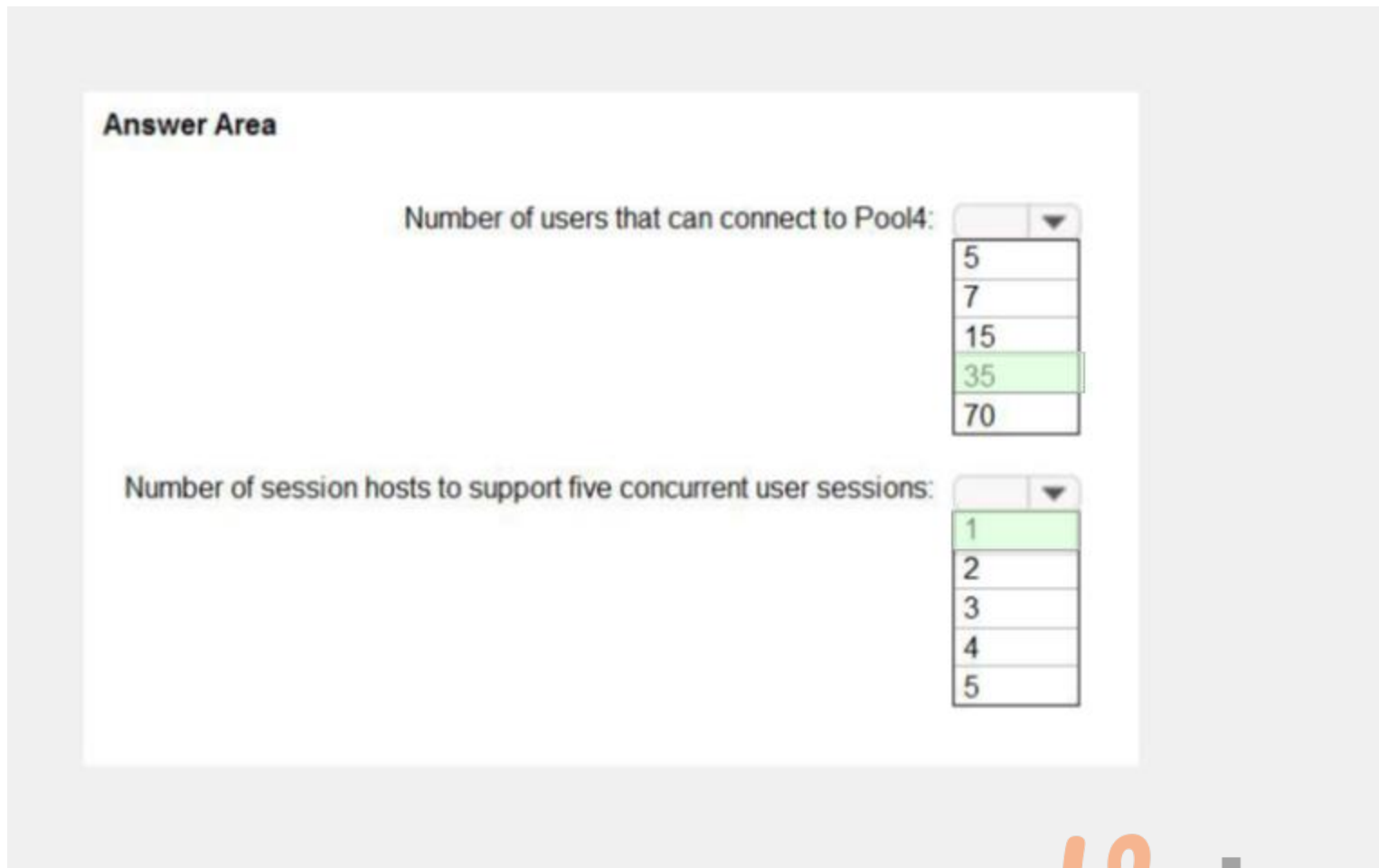
	▼
5	
7	
15	
35	
70	

Number of session hosts to support five concurrent user sessions:

	▼
1	
2	
3	
4	
5	

Answer Area:





**Section:**

**Explanation:**

## 02 - Manage Access and Security

### Case study

This is a case study. Case studies are not timed separately. You can use as much exam time as you would like to complete each case. However, there may be additional case studies and sections on this exam. You must manage your time to ensure that you are able to complete all questions included on this exam in the time provided.

To answer the questions included in a case study, you will need to reference information that is provided in the case study. Case studies might contain exhibits and other resources that provide more information about the scenario that is described in the case study. Each question is independent of the other questions in this case study.

At the end of this case study, a review screen will appear. This screen allows you to review your answers and to make changes before you move to the next section of the exam. After you begin a new section, you cannot return to this section.

To start the case study

To display the first question in this case study, click the Next button. Use the buttons in the left pane to explore the content of the case study before you answer the questions. Clicking these buttons displays information such as business requirements, existing environment, and problem statements. If the case study has an All Information tab, note that the information displayed is identical to the information displayed on the subsequent tabs.

When you are ready to answer a question, click the Question button to return to the question.

### Overview

Contoso, Ltd. is a law firm that has a main office in Montreal and branch offices in Paris and Seattle. The Seattle branch office opened recently.

Contoso has an Azure subscription and uses Microsoft 365.

### Existing Infrastructure. Active Directory

The network contains an on-premises Active Directory domain named contoso.com and an Azure Active Directory (Azure AD) tenant. One of the domain controllers runs as an Azure virtual machine and connects to a virtual network named VNET1. All internal name resolution is provided by DNS server that run on the domain controllers.

The on-premises Active Directory domain contains the organizational units (OUs) shown in the following table.

Name	Description
MontrealUsers	An OU for all the users in the Montreal office: The OU syncs to Azure AD by using Azure AD Connect.
ParisUsers	An OU for all the users in the Paris office: The OU syncs to Azure AD by using Azure AD Connect.
SeattleUsers	An OU for all the users in the Seattle office: The OU does <b>NOT</b> sync to Azure AD.

The on-premises Active Directory domain contains the users shown in the following table.

Name	Container	Member of
Operator1	Users	Domain Admins
Operator2	MontrealUsers	Users
Operator3	SeattleUsers	Server Operators

The Azure AD tenant contains the cloud-only users shown in the following table.

Name	Role
Admin1	Virtual Machine Contributor
Admin2	Desktop Virtualization Contributor
Admin3	Desktop Virtualization Session Host Operator
Admin4	Desktop Virtualization Host Pool Contributor

Existing Infrastructure. Network Infrastructure

All the Azure virtual networks are peered. The on-premises network connects to the virtual networks.

A virtual network named VNET4 was recently created and is peered to the other virtual networks. VNET4 does NOT contain any AVD virtual machines.

All servers run Windows Server 2019. All laptops and desktop computers run Windows 10 Enterprise.

Since users often work on confidential documents, all the users use their computer as a client for connecting to Remote Desktop Services (RDS).

In the West US Azure region, you have the storage accounts shown in the following table.

Name	Account kind	Performance
storage1	StorageV2	Standard
storage2	StorageV2	Premium
storage3	BlobStorage	Standard
storage4	StorageV1	Premium

Existing Infrastructure. Remote Desktop Infrastructure

Contoso has a Remote Desktop infrastructure shown in the following table.

Office	Description
Montreal	A Windows Virtual Desktop deployment that runs Windows 10 Enterprise multi-session hosts. The deployment contains the following: <ul style="list-style-type: none"> <li>• A host pool named Pool1</li> <li>• An application group named Group1</li> <li>• A workspace named Workspace1</li> <li>• Virtual machines that have a prefix of Pool1</li> </ul>
Seattle	An on-premises virtual machine-based RDS deployment that has personal desktops. The personal desktop virtual machines have a prefix of Pool2.
Paris	An on-premises virtual machine-based RDS deployment that has pooled desktops. The pooled desktop virtual machines have a prefix of Pool3. User profile disks are used to preserve the user state.

#### Requirements. Planned Changes

Contoso plans to implement the following changes:

Implement FSLogix profile containers for the Paris offices.

Deploy an Azure Virtual Desktop host pool named Pool4.

Migrate the RDS deployment in the Seattle office to Azure Virtual Desktop in the West US Azure region.

#### Requirements. Pool4 Configuration

Pool4 will have the following settings:

Host pool type: Pooled

Max session limit: 7

Load balancing algorithm: Depth-first

Images: Windows 10 Enterprise multi-session

Virtual machine size: Standard D2s v3

Name prefix: Pool4

Number of VMs: 5

Virtual network: VNET4

#### Requirements. Technical Requirements

Contoso identifies the following technical requirements:

Before migrating the RDS deployment in the Seattle office, obtain the recommended deployment configuration based on the current RDS utilization. For the Azure Virtual Desktop deployment in the Montreal office, disable audio output in the device redirection settings. For the Azure Virtual Desktop deployment in the Seattle office, store the FSLogix profile containers in Azure Storage. Enable Operator2 to modify the RDP Properties of the Azure Virtual Desktop deployment in the Montreal office. From a server named Server1, convert the user profile clicks to the FSLogix profile containers.

Ensure that the Pool1 virtual machines only run during business hours.

Use the principle of least privilege.



#### QUESTION 1

Which role should you assign to Operator2 to meet the technical requirements?

- A. Desktop Virtualization Session Host Operator
- B. Desktop Virtualization Host Pool Contributor
- C. Desktop Virtualization User Session Operator
- D. Desktop Virtualization Contributor

**Correct Answer: D**

**Section:**

**Explanation:**

Reference: <https://docs.microsoft.com/en-us/azure/virtual-desktop/rbac>

**QUESTION 2**

**HOTSPOT**

Which users can create Pool4, and which users can join session hosts to the domain? To answer, select the appropriate options in the answer area.

NOTE: Each correct selection is worth one point.

**Hot Area:**

**Answer Area**

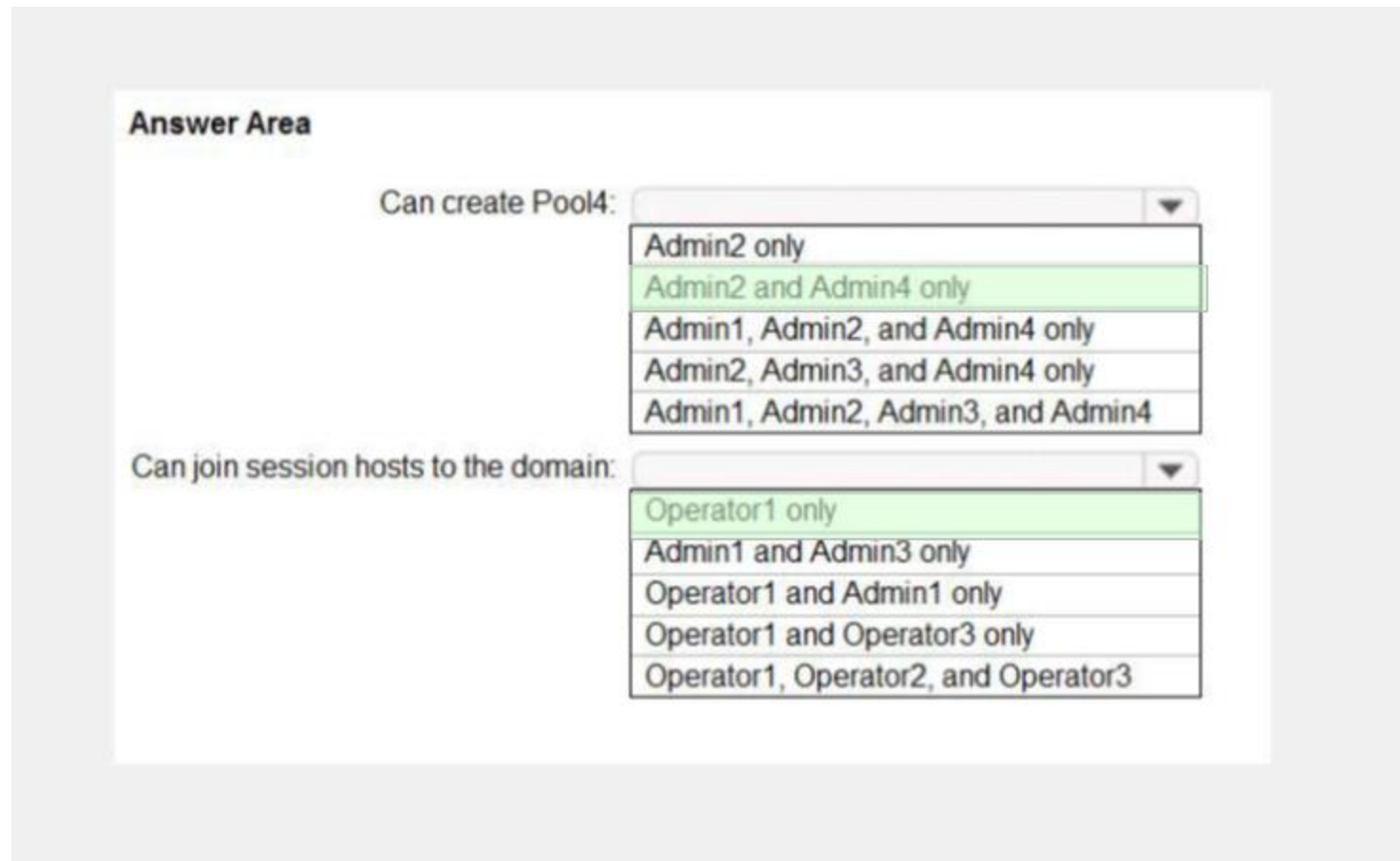
Can create Pool4:

- Admin2 only
- Admin2 and Admin4 only
- Admin1, Admin2, and Admin4 only
- Admin2, Admin3, and Admin4 only
- Admin1, Admin2, Admin3, and Admin4

Can join session hosts to the domain:

- Operator1 only
- Admin1 and Admin3 only
- Operator1 and Admin1 only
- Operator1 and Operator3 only
- Operator1, Operator2, and Operator3

**Answer Area:**



**Section:**

**Explanation:**



**01 - Manage User Environments and Apps**

**QUESTION 1**

You have an Azure Virtual Desktop deployment.

You need to recommend a solution to run containerized applications without installing the applications on the session hosts. What should you include in the recommendation?

- A. EXE applications
- B. MSI packages
- C. APPX app packages
- D. MSIX app packages

**Correct Answer: D**

**Section:**

**Explanation:**

Reference:

<https://docs.microsoft.com/en-us/windows/msix/msix-container>

**QUESTION 2**

You have an Azure Virtual Desktop host pool named Pool1 that contains three session hosts. The session hosts are configured to use FSLogix profiles. On a management computer, you create an Application Masking rule and assignment files.

You need to apply Application Masking to the session hosts in Pool1.

What should you do?

- A. Generate a registration token.
- B. Install the FSLogix agent on the session hosts in Pool1.
- C. Compile the rule and assignment files.
- D. Copy the files to the session hosts in Pool1.

**Correct Answer: D**

**Section:**

**Explanation:**

Reference:

<https://cloudbuild.co.uk/fslogix-application-masking-in-windows-virtual-desktop/>

**QUESTION 3**

Note: This question-is part of a series of questions that present the same scenario. Each question-in the series contains a unique solution that might meet the stated goals. Some question-sets might have more than one correct solution, while others might not have a correct solution.

After you answer a question-in this section, you will NOT be able to return to it. As a result, these questions will not appear in the review screen. You have the following:

A Microsoft 365 E5 tenant

An on-premises Active Directory domain

A hybrid Azure Active Directory (Azure AD) tenant

An Azure Active Directory Domain Services (Azure AD DS) managed domain An Azure Virtual Desktop deployment The Azure Virtual Desktop deployment contains personal desktops that are hybrid joined to the on-premises domain and enrolled in Microsoft Intune. You need to configure the security settings for the Microsoft Edge browsers on the personal desktops. Solution: You configure a compliance policy in Intune.

Does this meet the goal?

- A. Yes
- B. No



**Correct Answer: B**

**Section:**

**Explanation:**

You need to configure a Configuration Profile in Intune or use Group Policy.

**QUESTION 4**

**HOTSPOT**

You network contains an on-premises Active Directory domain that syncs to an Azure Active Directory (Azure AD) tenant. The domain contains the users shown in the following table.

Name	Role	Member of
User1	Desktop Virtualization Workspace Reader	Group1
User2	Desktop Virtualization Application Group Reader	Group2

You have an Azure Virtual Desktop deployment that contains the application groups shown in the following table.

Name	Application	Assignment
AppGroup1	Microsoft Word	Group1
AppGroup2	Microsoft Excel	Group2
AppGroup3	Microsoft PowerPoint	Group1, Group2

You have the workspaces shown in the following table.

Name	Application group
Workspace1	AppGroup1
Workspace2	AppGroup2

For each of the following statements, select Yes if the statement is true. Otherwise, select No.

NOTE: Each correct selection is worth one point.

**Hot Area:**



**Answer Area**

Statements	Yes	No
User1 has PowerPoint listed in the Remote Desktop client.	<input type="radio"/>	<input type="radio"/>
User1 has Word listed in the Remote Desktop client.	<input type="radio"/>	<input type="radio"/>
User2 has PowerPoint listed in the Remote Desktop client.	<input type="radio"/>	<input type="radio"/>

Answer Area:

**Answer Area**

Statements	Yes	No
User1 has PowerPoint listed in the Remote Desktop client.	<input type="radio"/>	<input checked="" type="radio"/>
User1 has Word listed in the Remote Desktop client.	<input checked="" type="radio"/>	<input type="radio"/>
User2 has PowerPoint listed in the Remote Desktop client.	<input type="radio"/>	<input checked="" type="radio"/>

**Section:**

**Explanation:**

Reference:

<https://docs.microsoft.com/en-us/azure/virtual-desktop/environment-setup>

**QUESTION 5**

**HOTSPOT**

You have an Azure Virtual Desktop host pool named Pool1 and an Azure Storage account named storage1. Pool1 and storage1 are in the same Azure region.

The current network utilization of the session hosts during peak hours is 95%.

You plan to use FSLogix profile containers stored in storage1 for users that connect to Pool1.

You need to configure the session hosts and storage1 to minimize network latency when loading and updating profiles. What should you do? To answer, select the appropriate options in the answer area.

NOTE: Each correct selection is worth one point.

**Hot Area:**

**Answer Area**

For storage1:  ▼

- Configure network routing.
- Configure a private endpoint.
- Configure the storage account type.

For the session hosts:  ▼

- Enable Write Accelerator.
- Increase the Virtual machine size.
- Add additional network adapters.

Answer Area:

**Answer Area**

For storage1:  ▼

- Configure network routing.
- Configure a private endpoint.
- Configure the storage account type.

For the session hosts:  ▼

- Enable Write Accelerator.
- Increase the Virtual machine size.
- Add additional network adapters.



**Section:**

**Explanation:**

Reference:

<https://docs.microsoft.com/en-us/azure/architecture/example-scenario/wvd/windows-virtual-desktop-fslogix>

**QUESTION 6**

DRAG DROP

You have an Azure Virtual Desktop host pool named Pool1, an application named App1, and an Azure file share named Share1.

You need to ensure that you can publish App1 to Pool1 by using MSIX app attach.

Which four actions should you perform in sequence before you publish App1? To answer, move the appropriate actions from the list of actions to the answer area and arrange them in the correct order.

**Select and Place:**

### Actions

Create an MSIX image.

Generate a signing certificate.

Upload the MSIX package to Share1.

Generate an encryption certificate.

Create an MSIX package.

Upload the MSIX image to Share1.

### Answer Area



Correct Answer:

### Actions

Upload the MSIX package to Share1.

Generate an encryption certificate.

### Answer Area

Generate a signing certificate.

Create an MSIX package.

Create an MSIX image.

Upload the MSIX image to Share1.



Section:

Explanation:

Reference:

<https://docs.microsoft.com/en-us/windows/msix/packaging-tool/create-app-package>

<https://docs.microsoft.com/en-us/azure/virtual-desktop/app-attach-image-prep>

### QUESTION 7

HOTSPOT

Your network contains an on-premises Active Directory domain named contoso.com that syncs to an Azure Active Directory (Azure AD) tenant.

You have an Azure subscription that contains an Azure Virtual Desktop host pool.

You create an Azure Storage account named storage1.

You need to use FSLogix profile containers in storage1 to store user profiles for a group named Group1. The solution must use the principle of least privilege.

What should you include in the solution? To answer, select the appropriate options in the answer area.

Hot Area:

**Answer Area**

For storage1:

- Join to the contoso.com domain.
- Configure a shared access signature (SAS).
- Enable encryption by using customer-managed keys.
- Configure Azure Active Directory Domain Services (AD DS) integration.

To Group1, assign the role of:

- Storage Blob Data Contributor
- Storage Blob Data Reader
- Storage File Data SMB Share Contributor
- Storage File Data SMB Share Reader

Answer Area:

**Answer Area**

For storage1:

- Join to the contoso.com domain.
- Configure a shared access signature (SAS).
- Enable encryption by using customer-managed keys.
- Configure Azure Active Directory Domain Services (AD DS) integration.

To Group1, assign the role of:

- Storage Blob Data Contributor
- Storage Blob Data Reader
- Storage File Data SMB Share Contributor
- Storage File Data SMB Share Reader

**Section:**

**Explanation:**

Reference:

<https://docs.microsoft.com/en-us/azure/storage/files/storage-files-identity-ad-ds-enable>

<https://docs.microsoft.com/en-us/azure/virtual-desktop/create-file-share>

**QUESTION 8**

You have an Azure Virtual Desktop deployment.

The session hosts are joined to an on-premises Active Directory domain named contoso.com.

You need to limit user sessions to three hours.

What should you configure?

A. a Group Policy Object (GPO) in contoso.com.

- B. the properties of the workspace
- C. the RDP Properties of a host pool
- D. just-in-time (JIT) VM access

**Correct Answer: A**

**Section:**

#### QUESTION 9

Note: This question-is part of a series of questions that present the same scenario. Each question-in the series contains a unique solution that might meet the stated goals. Some question-sets might have more than one correct solution, while others might not have a correct solution.

After you answer a question-in this section, you will NOT be able to return to it. As a result, these questions will not appear in the review screen. You have the following:

A Microsoft 365 E5 tenant

An on-premises Active Directory domain

A hybrid Azure Active Directory (Azure AD) tenant

An Azure Active Directory Domain Services (Azure AD DS) managed domain An Azure Virtual Desktop deployment The Azure Virtual Desktop deployment contains personal desktops that are hybrid joined to the on-premises domain and enrolled in Microsoft Intune. You need to configure the security settings for the Microsoft Edge browsers on the personal desktops. Solution: You create and configure a Group Policy Object (GPO) in the on-premises domain.

Does this meet the goal?

- A. Yes
- B. No

**Correct Answer: A**

**Section:**

**Explanation:**

Reference: <https://www.compete366.com/blog-posts/eight-tips-on-how-to-manage-azure-virtual-desktop-avd/>



#### QUESTION 10

Note: This question-is part of a series of questions that present the same scenario. Each question-in the series contains a unique solution that might meet the stated goals. Some question-sets might have more than one correct solution, while others might not have a correct solution.

After you answer a question-in this section, you will NOT be able to return to it. As a result, these questions will not appear in the review screen. You have the following:

A Microsoft 365 E5 tenant

An on-premises Active Directory domain

A hybrid Azure Active Directory (Azure AD) tenant

An Azure Active Directory Domain Services (Azure AD DS) managed domain An Azure Virtual Desktop deployment The Azure Virtual Desktop deployment contains personal desktops that are hybrid joined to the on-premises domain and enrolled in Microsoft Intune. You need to configure the security settings for the Microsoft Edge browsers on the personal desktops. Solution: You configure a configuration profile in Intune.

Does this meet the goal?

- A. Yes
- B. No

**Correct Answer: A**

**Section:**

**Explanation:**

Reference:

<https://docs.microsoft.com/en-us/mem/intune/fundamentals/azure-virtual-desktop>

#### QUESTION 11

You have an Azure Virtual Desktop deployment.

You publish a RemoteApp named AppVersion1.  
You need AppVersion1 to appear in the Remote Desktop client as Sales Contact Application.  
Which PowerShell cmdlet should you use?

- A. New-AzADApplication
- B. Update-AzWvdApplicationGroup
- C. Register-AzWvdApplicationGroup
- D. Update-AzWvdApplication

**Correct Answer: D**

**Section:**

**Explanation:**

Reference: <https://docs.microsoft.com/en-us/azure/virtual-desktop/customize-feed-for-virtual-desktop-users> <https://docs.microsoft.com/en-us/powershell/module/az.desktopvirtualization/update-azwvdapplication?view=azps-5.7.0>

#### QUESTION 12

You have an Azure Virtual Desktop deployment that contains the following:

A host pool named Pool1

Two session hosts named Host1 and Host2

An application group named RemoteAppGroup1 that contains a RemoteApp named App1 You need to prevent users from copying and pasting between App1 and their local device. What should you do?

- A. Create an AppLocker policy.
- B. Modify the locks of RemoteAppGroup1.
- C. Modify the locks of RemoteAppGroup1.
- D. Modify the RDP Properties of Pool1.

**Correct Answer: D**

**Section:**

**Explanation:**

Reference: <https://docs.microsoft.com/en-us/azure/virtual-desktop/customize-rdp-properties>

#### QUESTION 13

You have an Azure Virtual Desktop host pool that contains two session hosts. The Microsoft Teams client is installed on each session host. You discover that only the Microsoft Teams chat and collaboration features work. The calling and meeting features are disabled. You need to ensure that users can set the calling and meeting features from within Microsoft Teams.

What should you do?

- A. Install the Remote Desktop WebRTC Redirector Service.
- B. Configure Remote audio mode in the RDP Properties.
- C. Install the Teams Meeting add-in for Outlook.
- D. Configure audio input redirection.

**Correct Answer: A**

**Section:**

**Explanation:**

Reference: <https://docs.microsoft.com/en-us/azure/virtual-desktop/teams-on-wvd>

#### QUESTION 14

You have an Azure Virtual Desktop host pool that contains 20 Windows 10 Enterprise multi-session hosts. Users connect to the Azure Virtual Desktop deployment from computers that run Windows 10.

You plan to implement FSLogix Application Masking.



You need to deploy Application Masking rule sets. The solution must minimize administrative effort. To where should you copy the rule sets?

- A. the FSLogix profile container of each user
- B. C:\Program Files\FSLogix\Apps\Rules on every Windows 10 computer
- C. C:\Program Files\FSLogix\Apps\Rules on every session host

**Correct Answer: C**

**Section:**

**Explanation:**

Reference:

<https://docs.microsoft.com/en-us/azure/virtual-desktop/fslogix-office-app-rule-editor>

#### QUESTION 15

You have an Azure Virtual Desktop host pool named Pool1.

You are troubleshooting an issue for a Remote Desktop client that stopped responding.

You need to restore the default Remote Desktop client settings and unsubscribe from all workspaces. Which command should you run?

- A. msrdcw
- B. resetengine
- C. mstsc
- D. resetpluginhost

**Correct Answer: A**

**Section:**

**Explanation:**

Reference: <https://docs.microsoft.com/en-us/azure/virtual-desktop/troubleshoot-client>



#### QUESTION 16

Your network contains an on-premises Active Directory domain and an Azure Virtual Desktop deployment. The computer accounts for all the session hosts are in an organizational unit (OU) named WVDHostsOU. All user accounts are in an OU named CorpUsers.

A domain administrator creates a Group Policy Object (GPO) named Policy1 that only contains user settings. The administrator links Policy1 to WVDHostsOU. You discover that when users sign in to the session hosts, none of the settings from Policy1 are applied. What should you configure to apply GPO settings to the users when they sign in to the session hosts?

- A. loopback processing
- B. FSLogix profiles
- C. mandatory Roaming User Profiles
- D. restricted groups

**Correct Answer: A**

**Section:**

**Explanation:**

Reference: <https://www.linkedin.com/pulse/windows-virtual-desktop-remoteapps-jason-byway>

#### QUESTION 17

You have an Azure Virtual Desktop deployment.

You need to provide external users with access to the deployment. The external users have computers that run Windows 10 Pro and Windows 10 Enterprise. The users do not have the ability to install applications. What should you recommend that the users use to connect to the deployment?

- A. Microsoft Edge
- B. RemoteApp and Desktop Connection
- C. Remote Desktop Manager
- D. Remote Desktop Connection

**Correct Answer: A**

**Section:**

**Explanation:**

Reference:

<https://docs.microsoft.com/en-us/azure/active-directory/governance/entitlement-management-external-users> <https://docs.microsoft.com/en-us/azure/virtual-desktop/connect-web>

#### QUESTION 18

You network contains an on-premises Active Directory domain. The domain contains a universal security group named AVUsers. You have a hybrid Azure Active Directory (Azure AD) tenant. AVUsers syncs to Azure AD. You have an Azure Virtual Desktop host pool that contains four Windows 10 Enterprise multi-session hosts. You need to ensure that only the members of AVUsers can establish Azure Virtual Desktop sessions to the host pool. What should you do?

- A. Assign AVUsers to an Azure role scoped to each host pool.
- B. On each session host, add AVUsers to the local Remote Desktop Users group.
- C. Assign AVUsers to an Azure role scoped to the session hosts.
- D. Assign AVUsers to an application group.

**Correct Answer: D**

**Section:**

**Explanation:**

Reference:

<https://docs.microsoft.com/en-us/azure/virtual-desktop/manage-app-groups>



#### QUESTION 19

You deploy multiple Azure Virtual Desktop session hosts that have only private IP addresses. You need to ensure that administrators can initiate an RDP session to the session hosts by using the Azure portal. What should you implement?

- A. Remote Desktop Connection Broker (RD Connection Broker)
- B. Azure Application Gateway
- C. Azure Bastion
- D. Remote Desktop Session Host (RD Session Host)

**Correct Answer: C**

**Section:**

**Explanation:**

Azure Bastion is a new fully platform-managed PaaS service you provision inside your virtual network. It provides secure and seamless RDP/SSH connectivity to your VMs directly in the Azure portal over SSL. When you connect via Azure Bastion, your virtual machines do not need a public IP address.

Reference: <https://azure.microsoft.com/en-us/services/azure-bastion/>

#### QUESTION 20

You have an Azure Virtual Desktop host pool named Pool1. Pool1 contains session hosts that have a third-party application named App1. App1 is published by using a RemoteApp group. A new MSI-based version of App1 is installed each month to each host. The name of the executable file is different for each version of App1. You need to automate the process of making a new version of App1 available via RemoteApp. The process must ensure that the user experience remains the same when launching the application from the Windows Desktop client. Which two cmdlets should you run? Each correct answer presents part of the solution.

NOTE: Each correct selection is worth one point.



- A. Remove-AzWvdApplication
- B. New-AzWvdApplication
- C. New-AzWvdApplicationGroup
- D. New-AzWvdMsixPackage
- E. New-AzRoleAssignment
- F. Remove-AzWvdMsixPackage

**Correct Answer: B, D**

**Section:**

**Explanation:**

Reference: <https://docs.microsoft.com/en-us/azure/virtual-desktop/what-is-app-attach> <https://docs.microsoft.com/en-us/powershell/module/az.desktopvirtualization/new-azwvdapplication?view=azps-6.4.0>

## 02 - Manage User Environments and Apps

Case study

This is a case study. Case studies are not timed separately. You can use as much exam time as you would like to complete each case. However, there may be additional case studies and sections on this exam. You must manage your time to ensure that you are able to complete all questions included on this exam in the time provided.

To answer the questions included in a case study, you will need to reference information that is provided in the case study. Case studies might contain exhibits and other resources that provide more information about the scenario that is described in the case study. Each question is independent of the other questions in this case study.

At the end of this case study, a review screen will appear. This screen allows you to review your answers and to make changes before you move to the next section of the exam. After you begin a new section, you cannot return to this section.

To start the case study

To display the first question in this case study, click the Next button. Use the buttons in the left pane to explore the content of the case study before you answer the questions. Clicking these buttons displays information such as business requirements, existing environment, and problem statements. If the case study has an All Information tab, note that the information displayed is identical to the information displayed on the subsequent tabs.

When you are ready to answer a question, click the Question button to return to the question.

Overview

Contoso, Ltd. is a law firm that has a main office in Montreal and branch offices in Paris and Seattle. The Seattle branch office opened recently.

Contoso has an Azure subscription and uses Microsoft 365.

Existing Infrastructure. Active Directory

The network contains an on-premises Active Directory domain named contoso.com and an Azure Active Directory (Azure AD) tenant. One of the domain controllers runs as an Azure virtual machine and connects to a virtual network named VNET1. All internal name resolution is provided by DNS server that run on the domain controllers.

The on-premises Active Directory domain contains the organizational units (OUs) shown in the following table.

Name	Description
MontrealUsers	An OU for all the users in the Montreal office: The OU syncs to Azure AD by using Azure AD Connect.
ParisUsers	An OU for all the users in the Paris office: The OU syncs to Azure AD by using Azure AD Connect.
SeattleUsers	An OU for all the users in the Seattle office: The OU does <b>NOT</b> sync to Azure AD.

The on-premises Active Directory domain contains the users shown in the following table.

Name	Container	Member of
Operator1	Users	Domain Admins
Operator2	MontrealUsers	Users
Operator3	SeattleUsers	Server Operators

The Azure AD tenant contains the cloud-only users shown in the following table.

Name	Role
Admin1	Virtual Machine Contributor
Admin2	Desktop Virtualization Contributor
Admin3	Desktop Virtualization Session Host Operator
Admin4	Desktop Virtualization Host Pool Contributor

Existing Infrastructure. Network Infrastructure

All the Azure virtual networks are peered. The on-premises network connects to the virtual networks.

A virtual network named VNET4 was recently created and is peered to the other virtual networks. VNET4 does NOT contain any AVD virtual machines.

All servers run Windows Server 2019. All laptops and desktop computers run Windows 10 Enterprise.

Since users often work on confidential documents, all the users use their computer as a client for connecting to Remote Desktop Services (RDS).

In the West US Azure region, you have the storage accounts shown in the following table.

Name	Account kind	Performance
storage1	StorageV2	Standard
storage2	StorageV2	Premium
storage3	BlobStorage	Standard
storage4	StorageV1	Premium

Existing Infrastructure. Remote Desktop Infrastructure

Contoso has a Remote Desktop infrastructure shown in the following table.

Office	Description
Montreal	<p>A Windows Virtual Desktop deployment that runs Windows 10 Enterprise multi-session hosts. The deployment contains the following:</p> <ul style="list-style-type: none"> <li>• A host pool named Pool1</li> <li>• An application group named Group1</li> <li>• A workspace named Workspace1</li> <li>• Virtual machines that have a prefix of Pool1</li> </ul>
Seattle	An on-premises virtual machine-based RDS deployment that has personal desktops. The personal desktop virtual machines have a prefix of Pool2.
Paris	An on-premises virtual machine-based RDS deployment that has pooled desktops. The pooled desktop virtual machines have a prefix of Pool3. User profile disks are used to preserve the user state.

Requirements. Planned Changes

Contoso plans to implement the following changes:

Implement FSLogix profile containers for the Paris offices.

Deploy an Azure Virtual Desktop host pool named Pool4.

Migrate the RDS deployment in the Seattle office to Azure Virtual Desktop in the West US Azure region.

Requirements. Pool4 Configuration

Pool4 will have the following settings:

Host pool type: Pooled

Max session limit: 7

Load balancing algorithm: Depth-first

Images: Windows 10 Enterprise multi-session

Virtual machine size: Standard D2s v3

Name prefix: Pool4

Number of VMs: 5

Virtual network: VNET4



Requirements. Technical Requirements

Contoso identifies the following technical requirements:

Before migrating the RDS deployment in the Seattle office, obtain the recommended deployment configuration based on the current RDS utilization. For the Azure Virtual Desktop deployment in the Montreal office, disable audio output in the device redirection settings. For the Azure Virtual Desktop deployment in the Seattle office, store the FSLogix profile containers in Azure Storage. Enable Operator2 to modify the RDP Properties of the Azure Virtual Desktop deployment in the Montreal office. From a server named Server1, convert the user profile clicks to the FSLogix profile containers.

Ensure that the Pool1 virtual machines only run during business hours.

Use the principle of least privilege.

#### QUESTION 1

You need to configure the device redirection settings. The solution must meet the technical requirements. Where should you configure the settings?

- A. Workspace1
- B. MontrealUsers
- C. Group1
- D. Pool1

**Correct Answer: D**

**Section:**

#### QUESTION 2

Which three PowerShell modules should you install on Server1 to meet the technical requirements? Each correct answer presents part of the solution. NOTE: Each correct selection is worth one point.

- A. Pester
- B. RemoteDesktop
- C. ServerManager
- D. ActiveDirectory
- E. Hyper-V

**Correct Answer: A, D, E**

**Section:**

**Explanation:**

Contoso identifies the following technical requirements:

From a server named Server1, convert the user profile disks to the FSLogix profile containers.

The PowerShell modules for Hyper-V, Active Directory, and Pester are prerequisites to running the cmdlets to convert user profile disks to FSLogix.

Reference: <https://docs.microsoft.com/en-us/azure/cloud-adoption-framework/migrate/azure-best-practices/contoso-migration-rds-to-wvdthe-question-screen>.

#### 01 - Monitor and Maintain an Azure Virtual Desktop Infrastructure

##### QUESTION 1

You have an Azure Virtual Desktop deployment.

You use the Start/Stop VMs during off-hours feature in Azure.

You need to configure which virtual machines must never be stopped by the solution.

What should you configure?

- A. the Diagnostic settings of the host pool
- B. the Start-Stop-VM task



- C. an Azure Automation account variable
- D. an action group

**Correct Answer: C**

**Section:**

**Explanation:**

Reference: <https://docs.microsoft.com/en-us/azure/automation/automation-solution-vm-management> <https://docs.microsoft.com/en-us/azure/automation/automation-solution-vm-management-enable>

#### QUESTION 2

You have an Azure Virtual Desktop host pool in the US East Azure region.

You need to ensure that the host pool can fail over to the US West Azure region.

What should you do first?

- A. Create a Recovery Services vault.
- B. Create a virtual machine snapshot of each session host.
- C. Create an Azure Storage account that uses geo-redundant storage (GRS).
- D. Create a new host pool.

**Correct Answer: A**

**Section:**

**Explanation:**

Reference: <https://docs.microsoft.com/en-us/azure/site-recovery/azure-to-azure-tutorial-enable-replication>

#### QUESTION 3

You have an Azure Virtual Desktop deployment.

You deploy and configure Azure Virtual Desktop in a secondary location.

You plan to perform a test failover to the secondary location, but discover existing user sessions to the primary location. You need to sign out users from the session hosts in the primary location.

Which PowerShell cmdlet should you run?

- A. Invoke-RdsUserSessionLogoff
- B. Remove-AzWvdUserSession
- C. Invoke-RestMethod
- D. Remove-Alias

**Correct Answer: B**

**Section:**

**Explanation:**

Reference: <https://docs.microsoft.com/en-us/azure/virtual-desktop/disaster-recovery>

#### QUESTION 4

Note: This question-is part of a series of questions that present the same scenario. Each question-in the series contains a unique solution that might meet the stated goals. Some question-sets might have more than one correct solution, while others might not have a correct solution.

After you answer a question-in this section, you will NOT be able to return to it. As a result, these questions will not appear in the review screen. You have an Azure Virtual Desktop host pool that runs Windows 10 Enterprise multi-session.

User sessions are load-balanced between the session hosts. Idle session timeout is 30 minutes.

You plan to shut down a session host named Host1 to perform routine maintenance.

You need to prevent new user sessions to Host1 without disconnecting active user sessions.

Solution: From the properties of the virtual machine of Host1, you enable just-in-time (JIT) VM access. Does this meet the goal?



- A. Yes
- B. No

**Correct Answer: B**

**Section:**

**Explanation:**

Reference:

<https://docs.microsoft.com/en-us/azure/virtual-desktop/drain-mode>

**QUESTION 5**

Note: This question-is part of a series of questions that present the same scenario. Each question-in the series contains a unique solution that might meet the stated goals. Some question-sets might have more than one correct solution, while others might not have a correct solution.

After you answer a question-in this section, you will NOT be able to return to it. As a result, these questions will not appear in the review screen. You have an Azure Virtual Desktop host pool that runs Windows 10 Enterprise multi-session.

User sessions are load-balanced between the session hosts. Idle session timeout is 30 minutes.

You plan to shut down a session host named Host1 to perform routine maintenance.

You need to prevent new user sessions to Host1 without disconnecting active user sessions.

Solution: From the host pool, you remove Host1 from the session host list.

Does this meet the goal?

- A. Yes
- B. No

**Correct Answer: B**

**Section:**

**Explanation:**

Reference:

<https://docs.microsoft.com/en-us/azure/virtual-desktop/drain-mode>



**QUESTION 6**

DRAG DROP

You have an Azure Virtual Desktop host pool named Pool1. Pool1 contains session hosts that use FSLogix profile containers hosted in Azure NetApp Files volumes.

You need to back up profile files by using snapshots.

Which three actions should you perform in sequence? To answer, move the appropriate actions from the list of actions to the answer area and arrange them in the correct order.

**Select and Place:**

Actions	Answer Area
Create an Azure NetApp account.	
Register the NetApp Resource Provider.	⬅
Register the Azure NetApp snapshot policy feature.	➡
Create a snapshot policy.	
Apply a snapshot policy to a volume.	⬆ ⬇

**Correct Answer:**



**Section:**

**Explanation:**

Reference:

<https://docs.microsoft.com/en-us/azure/azure-netapp-files/azure-netapp-files-manage-snapshots>

**QUESTION 7**

Note: This question-is part of a series of questions that present the same scenario. Each question-in the series contains a unique solution that might meet the stated goals. Some question-sets might have more than one correct solution, while others might not have a correct solution.

After you answer a question-in this section, you will NOT be able to return to it. As a result, these questions will not appear in the review screen. You have an Azure Virtual Desktop host pool that runs Windows 10 Enterprise multi-session.

User sessions are load-balanced between the session hosts. Idle session timeout is 30 minutes.

You plan to shut down a session host named Host1 to perform routine maintenance.

You need to prevent new user sessions to Host1 without disconnecting active user sessions.

Solution: From the host pool, you change the Drain mode of Host1.

Does this meet the goal?

- A. Yes
- B. No

**Correct Answer: A**

**Section:**

**Explanation:**

Reference:

<https://docs.microsoft.com/en-us/azure/virtual-desktop/drain-mode>

**QUESTION 8**

You have an Azure Virtual Desktop host pool that runs Windows 10 Enterprise multi-session.

You need to configure automatic scaling of the host pool to meet the following requirements:

Distribute new user sessions across all running session hosts.

Automatically start a new session host when concurrent user sessions exceed 30 users per host.

What should you include in the solution?

- A. an Azure Automation account and the depth-first load balancing algorithm
- B. an Azure Automation account and the breadth-first load balancing algorithm
- C. an Azure load balancer and the breadth-first load balancing algorithm
- D. an Azure load balancer and the depth-first load balancing algorithm

**Correct Answer: A**

**Section:**

**Explanation:**

Reference: <https://docs.microsoft.com/en-us/azure/virtual-desktop/host-pool-load-balancing> <https://docs.microsoft.com/en-us/azure/virtual-desktop/configure-host-pool-load-balancing>

**QUESTION 9**

You have an Azure Virtual Desktop host pool named Pool1 and an Azure Automation account named account1. Pool1 is integrated with an Azure Active Directory Domain Services (Azure AD DS) managed domain named contoso.com. You plan to configure scaling for Pool1 by using Azure Automation runbooks.

You need to authorize the runbooks to manage the scaling of Pool1. The solution must minimize administrative effort. What should you configure?

- A. a managed identity in Azure Active Directory (Azure AD)
- B. a group Managed Service Account (gMSA) in Azure AD DS
- C. a Connections shared resource in Azure Automation
- D. a Run As account in Azure Automation

**Correct Answer: D**

**Section:**

**Explanation:**

Reference: <https://docs.microsoft.com/en-us/azure/virtual-desktop/set-up-scaling-script>

**QUESTION 10**

You have an Azure Virtual Desktop host pool named Pool1 that runs Windows 10 Enterprise multi-session hosts. You need to use Performance Monitor to troubleshoot a low frame quality issue that is affecting a current use session to Pool1. What should you run to retrieve the user session ID?

- A. Get-ComputerInfo
- B. qwinsta
- C. whoami
- D. Get-LocalUser



**Correct Answer: B**

**Section:**

**Explanation:**

Reference: <https://docs.microsoft.com/en-us/azure/virtual-desktop/troubleshoot-vm-configuration>

**QUESTION 11**

You have an Azure subscription that contains the resources shown in the following table.

Name	Description
WVDVM-0	A virtual machine used in a pooled virtual machine set
share1	An Azure file share that stores FSLogix profile containers
Image1	A custom Windows 10 image in a shared image gallery
Image2	A custom Windows Server 2019 image stored in Azure Blob storage

Which resources can you back up by using Azure Backup?

- A. WVDVM-0 and share1 only
- B. WVDVM-0 only
- C. WVDVM-0, Image1, and Image2 only

- D. WVDVM-0, share1, and Image1 only
- E. WVDVM-0, share1, Image1, and Image2

**Correct Answer: A**

**Section:**

**Explanation:**

Reference: <https://docs.microsoft.com/en-us/azure/backup/backup-afs> <https://docs.microsoft.com/en-us/azure/backup/backup-azure-vms-introduction>

**02 - Monitor and Maintain an Azure Virtual Desktop Infrastructure**

Case study

This is a case study. Case studies are not timed separately. You can use as much exam time as you would like to complete each case. However, there may be additional case studies and sections on this exam. You must manage your time to ensure that you are able to complete all questions included on this exam in the time provided.

To answer the questions included in a case study, you will need to reference information that is provided in the case study. Case studies might contain exhibits and other resources that provide more information about the scenario that is described in the case study. Each question is independent of the other questions in this case study.

At the end of this case study, a review screen will appear. This screen allows you to review your answers and to make changes before you move to the next section of the exam. After you begin a new section, you cannot return to this section.

To start the case study

To display the first question in this case study, click the Next button. Use the buttons in the left pane to explore the content of the case study before you answer the questions. Clicking these buttons displays information such as business requirements, existing environment, and problem statements. If the case study has an All Information tab, note that the information displayed is identical to the information displayed on the subsequent tabs.

When you are ready to answer a question, click the Question button to return to the question.

Overview

Contoso, Ltd. is a law firm that has a main office in Montreal and branch offices in Paris and Seattle. The Seattle branch office opened recently.

Contoso has an Azure subscription and uses Microsoft 365.

Existing Infrastructure. Active Directory

The network contains an on-premises Active Directory domain named contoso.com and an Azure Active Directory (Azure AD) tenant. One of the domain controllers runs as an Azure virtual machine and connects to a virtual network named VNET1. All internal name resolution is provided by DNS server that run on the domain controllers.

The on-premises Active Directory domain contains the organizational units (OUs) shown in the following table.

Name	Description
MontrealUsers	An OU for all the users in the Montreal office: The OU syncs to Azure AD by using Azure AD Connect.
ParisUsers	An OU for all the users in the Paris office: The OU syncs to Azure AD by using Azure AD Connect.
SeattleUsers	An OU for all the users in the Seattle office: The OU does <b>NOT</b> sync to Azure AD.

The on-premises Active Directory domain contains the users shown in the following table.

Name	Container	Member of
Operator1	Users	Domain Admins
Operator2	MontrealUsers	Users
Operator3	SeattleUsers	Server Operators

The Azure AD tenant contains the cloud-only users shown in the following table.

Name	Role
Admin1	Virtual Machine Contributor
Admin2	Desktop Virtualization Contributor
Admin3	Desktop Virtualization Session Host Operator
Admin4	Desktop Virtualization Host Pool Contributor



#### Existing Infrastructure. Network Infrastructure

All the Azure virtual networks are peered. The on-premises network connects to the virtual networks.

A virtual network named VNET4 was recently created and peered to the other virtual networks. VNET4 does NOT contain any AVD virtual machines.

All servers run Windows Server 2019. All laptops and desktop computers run Windows 10 Enterprise.

Since users often work on confidential documents, all the users use their computer as a client for connecting to Remote Desktop Services (RDS).

In the West US Azure region, you have the storage accounts shown in the following table.

Name	Account kind	Performance
storage1	StorageV2	Standard
storage2	StorageV2	Premium
storage3	BlobStorage	Standard
storage4	StorageV1	Premium

#### Existing Infrastructure. Remote Desktop Infrastructure

Contoso has a Remote Desktop infrastructure shown in the following table.

Office	Description
Montreal	A Windows Virtual Desktop deployment that runs Windows 10 Enterprise multi-session hosts. The deployment contains the following: <ul style="list-style-type: none"><li>• A host pool named Pool1</li><li>• An application group named Group1</li><li>• A workspace named Workspace1</li><li>• Virtual machines that have a prefix of Pool1</li></ul>
Seattle	An on-premises virtual machine-based RDS deployment that has personal desktops. The personal desktop virtual machines have a prefix of Pool2.
Paris	An on-premises virtual machine-based RDS deployment that has pooled desktops. The pooled desktop virtual machines have a prefix of Pool3. User profile disks are used to preserve the user state.



#### Requirements. Planned Changes

Contoso plans to implement the following changes:

Implement FSLogix profile containers for the Paris offices.

Deploy an Azure Virtual Desktop host pool named Pool4.

Migrate the RDS deployment in the Seattle office to Azure Virtual Desktop in the West US Azure region.

#### Requirements. Pool4 Configuration

Pool4 will have the following settings:

Host pool type: Pooled

Max session limit: 7

Load balancing algorithm: Depth-first

Images: Windows 10 Enterprise multi-session

Virtual machine size: Standard D2s v3

Name prefix: Pool4

Number of VMs: 5

Virtual network: VNET4

#### Requirements. Technical Requirements

Contoso identifies the following technical requirements:

Before migrating the RDS deployment in the Seattle office, obtain the recommended deployment configuration based on the current RDS utilization. For the Azure Virtual Desktop deployment in the Montreal office, disable audio output in the device redirection settings. For the Azure Virtual Desktop deployment in the Seattle office, store the FSLogix profile containers in Azure Storage. Enable Operator2 to modify the RDP Properties of the Azure Virtual Desktop deployment in the Montreal office. From a server named Server1, convert the user profile clicks to the FSLogix profile containers.

Ensure that the Pool1 virtual machines only run during business hours.

Use the principle of least privilege.

#### QUESTION 1

You need to configure the virtual machines that have the Pool1 prefix. The solution must meet the technical requirements. What should you use?

- A. an Azure Virtual Desktop automation task
- B. Virtual machine auto-shutdown
- C. Service Health in Azure Monitor
- D. Azure Automation

**Correct Answer: A**

**Section:**

**Explanation:**

Reference:

<https://docs.microsoft.com/en-us/azure/logic-apps/create-automation-tasks-azure-resources>

#### Exam I

#### QUESTION 1

You have an Azure Virtual Desktop host pool in the East US region.

You need to implement a disaster recovery solution that meets the following requirements:

If users cannot connect to the Azure Virtual Desktop resources in the East US region, the users must be able to connect to the equivalent resources in the West US region. Users must connect to the Azure Virtual Desktop resources in either the East US or the West US region by selecting a single icon in the Remote Desktop client? In the event of a disaster, failover between the Azure regions must be initiated manually by an administrator. Failover times must be minimized. What should you do?

- A. Configure a shared image gallery that has replicas in the East US and West US regions
- B. Create new session hosts in the West US region and add the session hosts to an existing host pool
- C. Create an additional host pool in the West US region
- D. Enable Azure Site Recovery replication of the virtual machines to the West US region
- E. Enable Azure Backup to a Recovery Services vault in the West US region

**Correct Answer: C, D**

**Section:**

**Explanation:**

Reference:

<https://docs.microsoft.com/en-us/azure/virtual-desktop/disaster-recovery>

#### QUESTION 2

You have an Azure Virtual Desktop deployment.

You need to monitor the deployment by using the Azure Virtual Desktop Insights solution in Azure Monitor. What should you use as the Diagnostic settings destination for the host pool?

- A. Event hub
- B. Log Analytics workspace
- C. Storage account

**Correct Answer: B**

**Section:**

**Explanation:**

<https://docs.microsoft.com/en-us/azure/virtual-desktop/azure-monitor>

**QUESTION 3**

HOTSPOT

You have an Azure subscription that contains a user named User1.

The subscription uses the Azure Virtual Desktop host pools shown in the following table.

Name	Type	Session host operating system	Number of hosts
Pool1	Pooled	Windows Server 2019 Datacenter	2
Pool2	Pooled	Windows 10 Enterprise multi-session	10
Pool3	Personal	Windows 11 Enterprise	10

You need to ensure that User1 can create RemoteApp app groups that will be used to stream a suite of custom apps from the host pools. The solution must meet the following requirements:

- The apps must be available to the users in all the pools.
- The principle of least privilege must be followed.
- Administrative effort must be minimized.

Which role should you assign to User1, and what is the minimum number of app groups that User1 should create? To answer, select the appropriate options in the answer area. NOTE: Each correct selection is worth one point.

**Hot Area:**

**Answer Area**

Role:

▼

- Desktop Virtualization Application Group Contributor
- Desktop Virtualization Contributor
- Desktop Virtualization Host Pool Contributor
- Desktop Virtualization Workplace Contributor

Number of app groups:

▼

- 1
- 2
- 3
- 22

**Answer Area:**

**Answer Area**

Role:

- Desktop Virtualization Application Group Contributor
- Desktop Virtualization Contributor
- Desktop Virtualization Host Pool Contributor
- Desktop Virtualization Workplace Contributor

Number of app groups:

- 1
- 2
- 3
- 22



Section:  
Explanation:

**QUESTION 4**  
HOTSPOT

You have an Azure subscription named Subscription1 that contains the users shown in the following table. Subscription1 contains the Azure Virtual Desktop host pools shown in the following table.

Name	Session host in host pool	Session host public inbound ports	Name	Session host in host pool	Session host public inbound ports
Pool1	P1-0.contoso.com	None	Pool1	P1-0.contoso.com	None
Pool2	P2-0.contoso.com	None	Pool2	P2-0.contoso.com	None

Subscription1 contains the Azure Virtual Desktop application groups shown in the following table.

Name	Host pool	Application group type	Name	Host pool	Application group type
AppGroup1	Pool1	Desktop	AppGroup1	Pool1	Desktop
AppGroup2	Pool2	Desktop	AppGroup2	Pool2	Desktop

You perform the role assignments shown in the following table.

Role	To group	For resource	Role	To group	For resource
Desktop Virtualization Reader	Group3	Subscription1	Desktop Virtualization Reader	Group3	Subscription1
Desktop Virtualization User Session Operator	Group1	Pool1	Desktop Virtualization User Session Operator	Group1	Pool1
Desktop Virtualization User	Group3	AppGroup2	Desktop Virtualization User	Group3	AppGroup2
Virtual Machine User Login	Group1	P1-0.contoso.com	Virtual Machine User Login	Group1	P1-0.contoso.com

For each of the following statements, select Yes if the statement is true. Otherwise, select No.

NOTE: Each correct selection is worth one point.

**Hot Area:**

User1 can connect to the P1-0.contoso.com session host.

User2 can connect to the P1-0.contoso.com session host.

User2 can connect to the P2-0.contoso.com session host.

**Answer Area:**

User1 can connect to the P1-0.contoso.com session host.

User2 can connect to the P1-0.contoso.com session host.

User2 can connect to the P2-0.contoso.com session host.

**Section:**

**Explanation:**

Yes, No, Yes

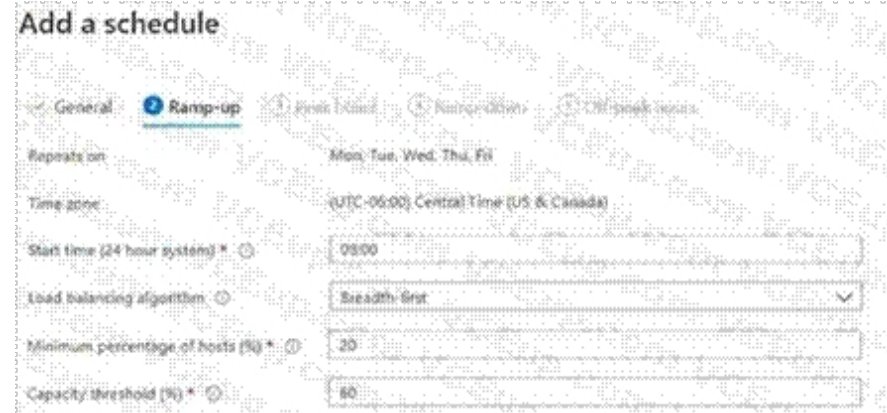


**QUESTION 5**

**HOTSPOT**

You have an Azure Virtual Desktop host pool named HostPool1 that contains 20 session hosts.

You create a new scaling plan that has the Ramp-up settings shown in the following exhibit.



Use the drop-down menus to select the answer choice that completes each statement based on the information presented in the graphic. NOTE: Each correct selection is worth one point.

**Hot Area:**

Starting at 08:00, [answer choice] session hosts will start for ramp-up.

2
4
16
20

New user sessions will be distributed [answer choice].

evenly across all available session hosts
to the session host that has the lowest CPU usage
to the session host with the most connections that has not reached the limit

**Answer Area:**

Starting at 08:00, [answer choice] session hosts will start for ramp-up.

2
4
16
20

New user sessions will be distributed [answer choice].

evenly across all available session hosts
to the session host that has the lowest CPU usage
to the session host with the most connections that has not reached the limit

**Section:**

**Explanation:**

**QUESTION 6**

You have an on-premises network and an Azure subscription. The subscription contains the following:

A virtual network

An Azure Firewall instance

An Azure Virtual Desktop host pool

The virtual network connects to the on-premises network by using a site-to-site VPN.

You need to ensure that only users from the on-premises network can connect to the Azure Virtual Desktop managed resources in the host pool. The solution must minimize administrative effort.

What should you configure?

- A. a conditional access policy
- B. an Azure Firewall rule
- C. a network security group (NSG) rule
- D. a user-defined route

**Correct Answer: B**

**Section:**

**QUESTION 7**

You have an Azure Virtual Desktop deployment that uses Microsoft 365 cloud services including Microsoft Teams. Users use the Remote Desktop client to connect to the deployment from computers that run Windows 10.

You need to support audio and video in Azure Virtual Desktop and provide the users with access to Microsoft Teams calling and meeting features.

Which three actions should you perform? Each correct answer presents part of the solution.

NOTE: Each correct selection is worth one point.

- A. Install the Microsoft Teams WebSocket Service on the Windows 10 computers
- B. Configure the IsWVDEnvironment registry key on the Windows 10 computers
- C. Configure the IsWVDEnvironment registry key on the virtual machines
- D. Install the Microsoft Teams desktop app on the Windows 10 computers
- E. Install the Microsoft Teams WebSocket Service on the virtual machines
- F. Install the Microsoft Teams desktop app on the virtual machines

**Correct Answer: B, D, E**

**Section:**

**Explanation:**

Reference: <https://docs.microsoft.com/en-us/azure/virtual-desktop/teams-on-avd>

#### QUESTION 8

You have an Azure Virtual Desktop host pool named Pool1 that contains three session hosts. The session hosts are configured to use FSLogix profile containers. You need to configure Cloud Cache on the session hosts. What should you do?

- A. Add a VHDLocations entries to the Windows registry
- B. Remove VHDLocations entries from the Windows registry
- C. Uninstall the FSLogix agent
- D. Configure FSLogix Office Container

**Correct Answer: B**

**Section:**

**Explanation:**

Reference: <https://docs.microsoft.com/en-us/fslogix/configure-cloud-cache-tutorial>

#### QUESTION 9

You have an Azure Virtual Desktop deployment. You implement FSLogix profile containers. You need to ensure that the FSLogix profile containers are not used for specific users. What should you do?

- A. Modify the local groups on each session host
- B. Apply an Application Masking rule to each session host
- C. Apply an AppLocker policy to each session host
- D. Modify the RDP Properties of the host pool

**Correct Answer: A**

**Section:**

**Explanation:**

<https://docs.microsoft.com/en-us/fslogix/configure-profile-container-tutorial>

#### QUESTION 10

You have an Azure Virtual Desktop deployment. You plan to implement the Start/Stop VMs during off-hours feature.



You need to ensure that you can stop the session hosts automatically based on the CPU utilization. What should you do on the session hosts?

- A. Install the Azure Virtual Desktop Agent
- B. Enable change tracking
- C. Configure the Power Management settings
- D. Configure the Diagnostic settings

**Correct Answer: D**

**Section:**

**Explanation:**

<https://docs.microsoft.com/en-us/azure/virtual-desktop/azure-monitor>

#### QUESTION 11

Your network contains an on-premises Active Directory domain named contoso.com that syncs to an Azure Active Directory (Azure AD) tenant.

You have an Azure Virtual Desktop host pool named Pool1 that has the following settings:

Host pool name: Pool1

Host pool type: Personal

Load balancing algorithm: Breadth-first Number of VMs: 3

The session hosts have the following configurations:

Image used to create the virtual machines: Windows 10 Enterprise

Virtual machines domain-joined to: On-premises contoso.com domain

You need to ensure that you can use Microsoft EndPoint Manager to manage security update on the session hosts. What should you do?

- A. Create Windows 10 Enterprise multi-session images
- B. Configure the session hosts as hybrid Azure AD-joined
- C. Change Host pool type to Pooled
- D. Change Load balancing algorithm to Depth-first

**Correct Answer: B**

**Section:**

**Explanation:**

#### QUESTION 12

You have an Azure subscription that contains the resources shown in the following table.





Name	Description
AVDVM-0	A virtual machine used in a pooled virtual machine set
share1	An Azure file share that stores FSLogix profile containers
Image1	A custom Windows 10 image in a shared image gallery
Image2	A custom Windows Server 2019 image stored in Azure Blob storage

You create a recovery services vault named Vault1.  
Which resources can you back up using Azure Backup to Vault1?

- A. AVDVM-0 only
- B. AVDVM-0 and share1 only
- C. AVDVM-0, Image1, and Image2 only
- D. AVDVM-0, share1, and Image1 only
- E. AVDVM-0, share1, Image1, and Image2

**Correct Answer: E**

**Section:**

**Explanation:**

<https://www.techrepublic.com/article/how-to-create-a-backup-recovery-service-with-microsoft-azure/>



**QUESTION 13**

**HOTSPOT**

You have an Azure subscription that contains a hybrid Azure Active Directory (Azure AD) tenant and two domain-joined Azure virtual machines. The virtual machines run Windows Server 2019 and contain managed disks.

You plan to deploy an Azure Virtual Desktop host pool that will use a Storage Spaces Direct Scale-Out File Server to host user profiles.

You need to ensure that the virtual machines can host the Storage Spaces Direct deployment. The solution must meet the following requirements:

Ensure that the user profiles are available if a single server fails.

Minimize administrative effort.

What should you do? To answer, select the appropriate options in the answer area.

NOTE: Each correct selection is worth one point.

**Hot Area:**

**Answer Area**

On each virtual machine, install:

- The Failover Clustering feature
- The File Server Resource Manager role service
- The Remote Desktop Services role

Create:

- An additional Azure virtual machine that runs Windows Server 2019
- An Azure NetApp Files share
- An Azure storage account
- Two shared disks

Answer Area:

**Answer Area**

On each virtual machine, install:

- The Failover Clustering feature
- The File Server Resource Manager role service
- The Remote Desktop Services role

Create:

- An additional Azure virtual machine that runs Windows Server 2019
- An Azure NetApp Files share
- An Azure storage account
- Two shared disks

**Section:**

**Explanation:**

References: <https://docs.microsoft.com/en-us/windows-server/storage/storage-spaces/deploy-storage-spaces-direct>

**QUESTION 14**

You have an Azure Virtual Desktop host pool named Pool1 and an Azure Automation account named account1. Pool1 is integrated with an Azure Active Directory Domain Services (Azure AD DS) managed domain named contoso.com. You plan to configure scaling for Pool1 by using Azure Automation runbooks.

You need to authorize the runbooks to manage the scaling of Pool1. The solution must minimize administrative effort. What should you configure?

- A. A-series
- B. D-series
- C. H-series
- D. B-series

**Correct Answer: D**

**Section:**

**Explanation:**

<https://docs.microsoft.com/en-us/azure/virtual-machines/sizes-b-series-burstable>

**QUESTION 15**

You have an Azure Active Directory Domain Services (Azure AD DS) domain named contoso.com.

You have an Azure Storage account named storage1. Storage1 hosts a file share named share1 that has share and file system permissions configured. Share1 is configured to use contoso.com for authentication. You create an Azure Virtual Desktop host pool named Pool1. Pool1 contains two session hosts that use the Windows 10 multi-session + Microsoft 365 Apps image. You need to configure an FSLogix profile container for Pool1. What should you do next?

- A. Install the FSLogix agent on the session hosts of Pool1.
- B. From storage1, set Allow shared key access to Disabled.
- C. Configure the Profiles setting for the session hosts of Pool1.
- D. Generate a shared access signature (SAS) key for storage1.

**Correct Answer: B**

**Section:**

**Explanation:**

<https://docs.microsoft.com/en-us/azure/virtual-desktop/create-host-pools-user-profile>

**QUESTION 16**

You have an Azure Virtual Desktop deployment that contains a host pool. The pool has the following settings:

- \* Resource group: RG1
- \* Host pool name: Pool1
- \* Location: East US
- \* Host pool type: Pooled

The deployment contains the workspaces shown in the following table.



Name	Resource group	Location
Workspace1	RG1	East US
Workspace2	RG1	West US
Workspace3	RG2	East US
Workspace4	RG2	West US

For Pool1, you plan to create a RemoteApp application group named AppGroup1. In which workspaces can you register AppGroup1?

- A. Workspace1 and Workspace2 only
- B. Workspace1 and Workspace3 only
- C. Workspace1 only
- D. Workspace1, Workspace2, Workspace3, and Workspace4

**Correct Answer: B**

**Section:**

**QUESTION 17**

DRAG DROP

You have an Azure subscription that contains the storage accounts shown in the following table.

Name	Performance	Type
storage1	Standard	General purpose v2
storage2	Premium	BlockBlobStorage
storage3	Premium	Page blobs
storage4	Premium	FileStorage

You have a custom generalized Windows 10 image.

You plan to deploy an Azure Virtual Desktop host pool that will use the custom image and FSLogix profile containers. You need to recommend which storage accounts to use for the custom image and the profile containers. The solution must meet the following requirements:

Minimize costs to store the image.

Maximize performance of the profile containers.

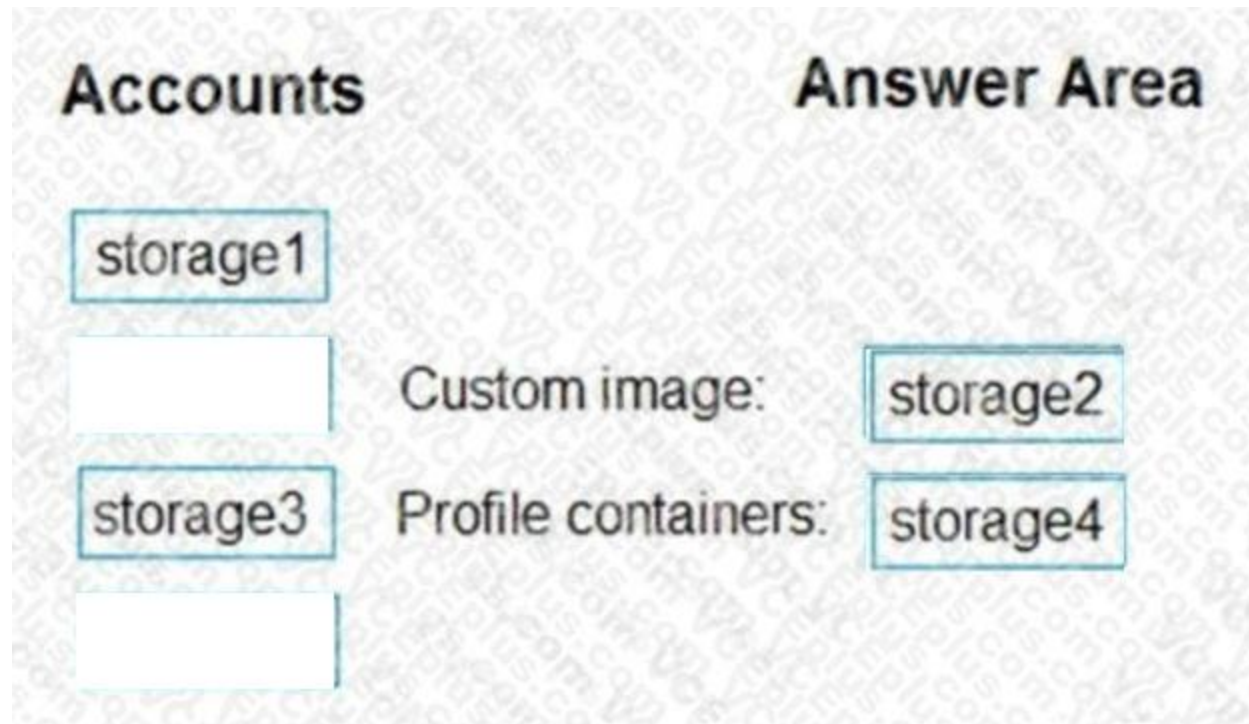
Which account should you recommend for each type of content? To answer, drag the appropriate accounts to the correct content type. Each account may be used once, more than once, or not at all. You may need to drag the split bar between panes or scroll to view content.

NOTE: Each correct selection is worth one point.

Select and Place:

The screenshot shows an interactive interface with two main sections: 'Accounts' and 'Answer Area'. Under 'Accounts', there are four blue-bordered boxes containing the text 'storage1', 'storage2', 'storage3', and 'storage4'. Under 'Answer Area', there are two blue-bordered boxes. The first box is preceded by the text 'Custom image:' and the second box is preceded by 'Profile containers:'. A large, semi-transparent watermark 'Vdumps' is overlaid on the right side of the interface.

Correct Answer:



**Section:**

**Explanation:**

<https://docs.microsoft.com/en-us/azure/virtual-desktop/set-up-customize-master-image#upload-master-image-to-a-storage-account-in-azure> <https://docs.microsoft.com/en-us/azure/virtual-desktop/store-fslogix-profile>

**QUESTION 18**

You have an Azure storage account that contains the generalized Windows 10 disk images shown in the following table.

Name	Format	Disk type	Name	Format	Disk type
Disk1	VHD	Fixed size	Disk1	VHD	Fixed size
Disk2	VHD	Dynamically expanding	Disk2	VHD	Dynamically expanding
Disk3	VHDX	Fixed size	Disk3	VHDX	Fixed size
Disk4	VHDX	Dynamically expanding	Disk4	VHDX	Dynamically expanding

You need to create an image that will be used to deploy an Azure Virtual Desktop session host.

Which disk should you use?

- A. Disk1
- B. Disk2
- C. Disk3
- D. Disk4

**Correct Answer: A**

**Section:**

**Explanation:**

Reference: <https://docs.microsoft.com/en-us/azure/virtual-desktop/set-up-customize-master-image>

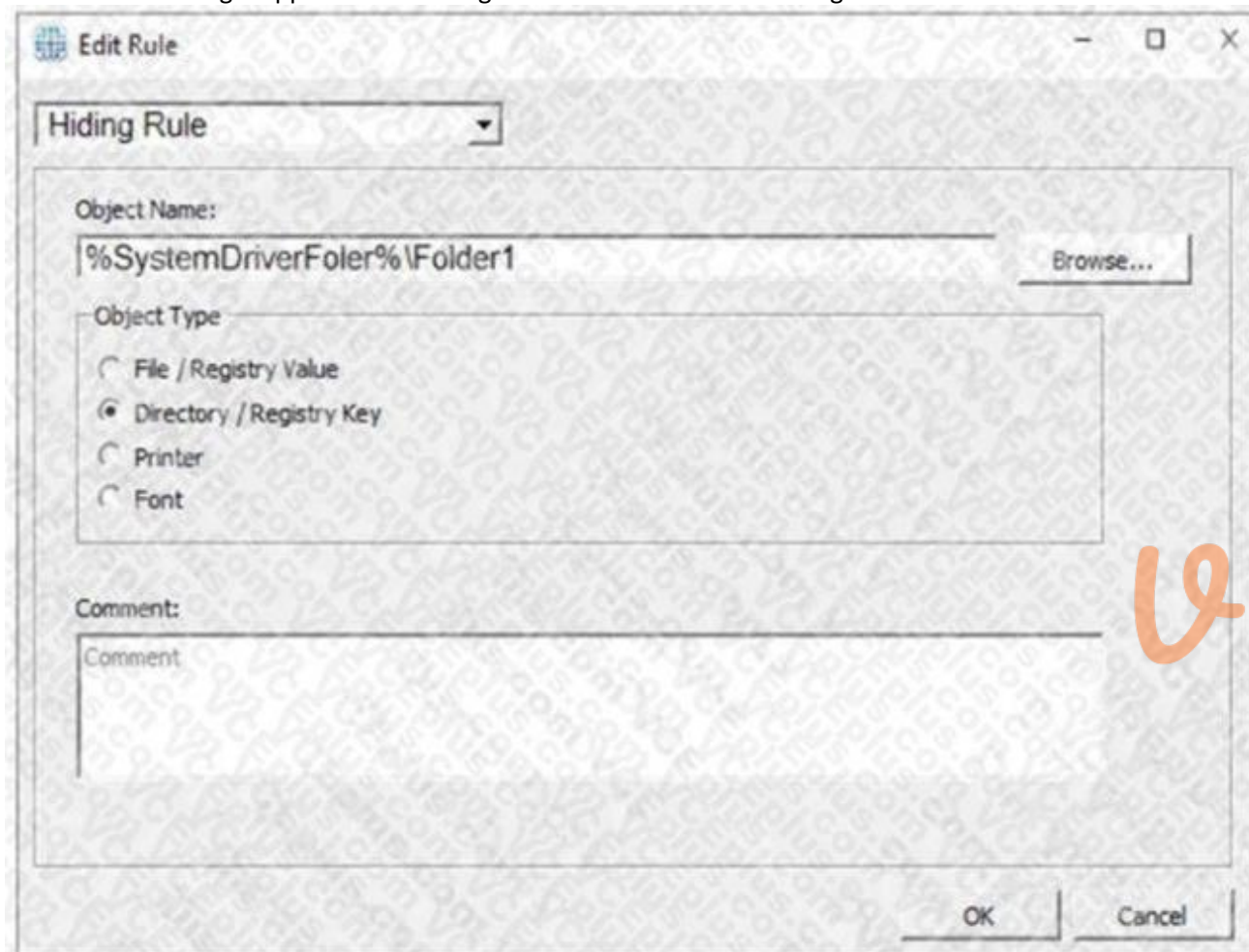
**QUESTION 19**

HOTSPOT

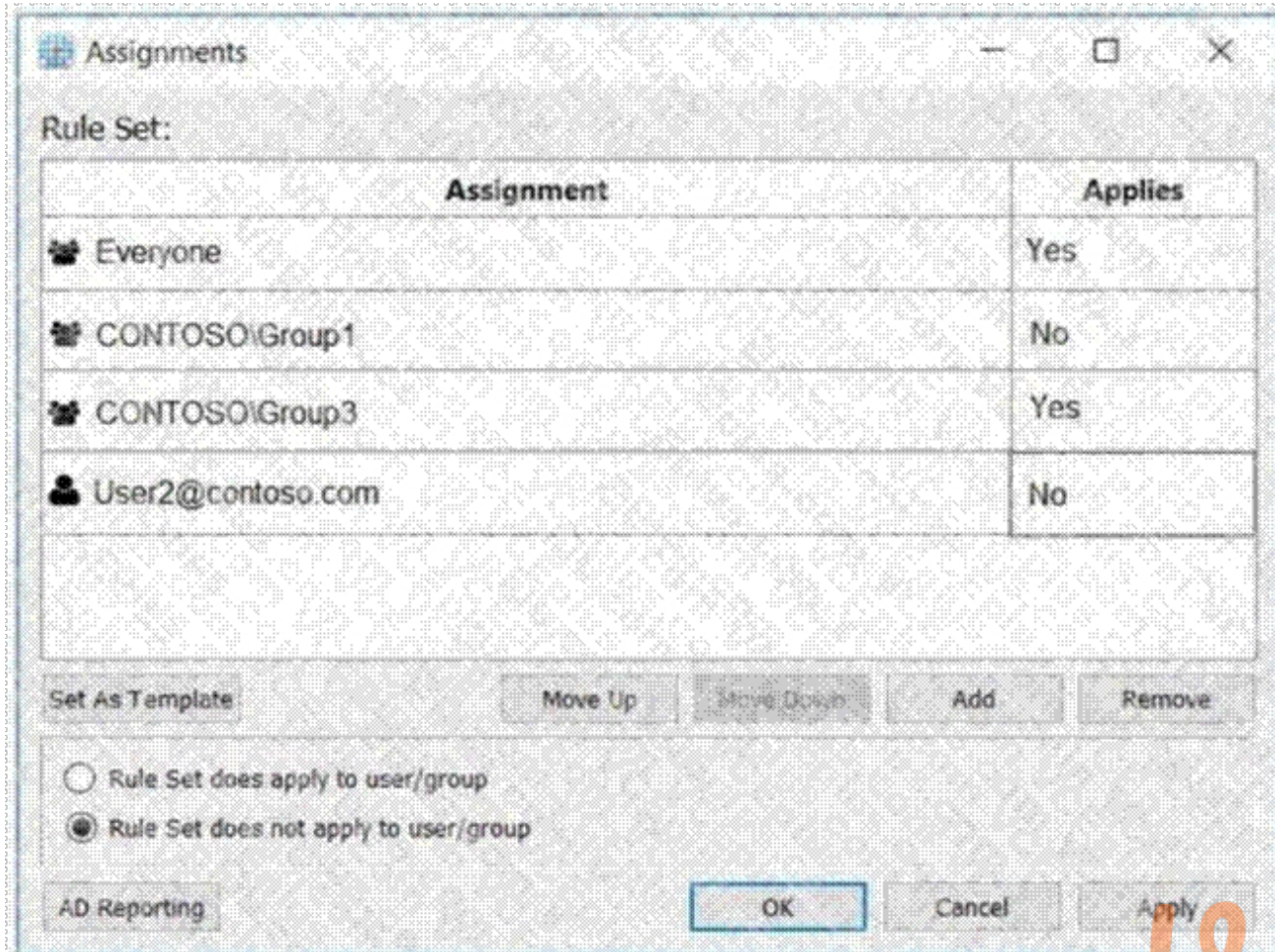
You have a hybrid Azure Active Directory (Azure AD) tenant named contoso.com that contains the users shown in the following table.

Name	Member of
User1	Group1
User2	Group2
User3	Group1, Group3

You have an Azure Virtual Desktop host pool. All the session hosts have a folder named C:\Folder1. You create an FSLogix Application Masking rule as shown in the following exhibit.



You create assignments for the Application Masking rule as shown in the following exhibit.



For each of the following statements, select Yes if the statement is true. Otherwise, select No.  
NOTE: Each correct selection is worth one point.

Hot Area:

Answer Area			
Statements	Yes	No	
User1 can see folder C:\Folder1 on a session host.	<input type="radio"/>	<input type="radio"/>	
User2 can see folder C:\Folder1 on a session host.	<input type="radio"/>	<input type="radio"/>	
User3 can see folder C:\Folder1 on a session host.	<input type="radio"/>	<input type="radio"/>	

Answer Area:

Answer Area		
Statements	Yes	No
User1 can see folder C:\Folder1 on a session host.	<input checked="" type="radio"/>	<input type="radio"/>
User2 can see folder C:\Folder1 on a session host.	<input checked="" type="radio"/>	<input type="radio"/>
User3 can see folder C:\Folder1 on a session host.	<input type="radio"/>	<input checked="" type="radio"/>

**Section:**

**Explanation:**

References: <https://docs.microsoft.com/en-us/fslogix/application-masking-rules-ht> <https://docs.microsoft.com/en-us/fslogix/application-masking-users-groups-ht>

#### QUESTION 20

Note: This question is part of a series of questions that present the same scenario. Each question in the series contains a unique solution that might meet the stated goals. Some question sets might have more than one correct solution, while others might not have a correct solution.

After you answer a question in this section, you will NOT be able to return to it. As a result, these questions will not appear in the review screen. You have the following:

A Microsoft 365 E5 tenant

An on-premises Active Directory domain

A hybrid Azure Active Directory (Azure AD) tenant

An Azure Active Directory Domain Services (Azure AD DS) managed domain An Azure Virtual Desktop deployment The Azure Virtual Desktop deployment contains personal desktops that are hybrid joined to the on-premises domain and enrolled in Microsoft Intune.

You need to configure the security settings for the Microsoft Edge browsers on the personal desktops. Solution: You configure a Group Policy Object (GPO) in the Azure AD DS managed domain.

Does this meet the goal?

A. Yes

B. No

**Correct Answer: B**

**Section:**

**Explanation:**

Reference: <https://www.compete366.com/blog-posts/eight-tips-on-how-to-manage-azure-virtual-desktop-avd/>

#### QUESTION 21

Note: This question is part of a series of questions that present the same scenario. Each question in the series contains a unique solution that might meet the stated goals. Some question sets might have more than one correct solution, while others might not have a correct solution.

After you answer a question in this section, you will NOT be able to return to it. As a result, these questions will not appear in the review screen. You have an Azure Virtual Desktop host pool that runs Windows 10 Enterprise multi-session.

User sessions are load-balanced between the session hosts. Idle session timeout is 30 minutes.

You plan to shut down a session host named Host1 to perform routine maintenance.

You need to prevent new user sessions to Host1 without disconnecting active user sessions.

Solution: From the properties of the virtual machine of Host1, you configure the Auto-shutdown settings. Does this meet the goal?

A. Yes



B. No

**Correct Answer: B**

**Section:**

**Explanation:**

<https://docs.microsoft.com/en-us/azure/virtual-desktop/drain-mode>

**QUESTION 22**

DRAG DROP

You have an Azure subscription that contains a virtual machine named VM1. VM1 runs a customized version of Windows 10 Enterprise. You generalize the operating system on VM1 and shut down the virtual machine. You need to deploy additional virtual machines based on an image of VM1 by using the Azure portal.

Which three actions should you perform in sequence? To answer, move the appropriate actions from the list of actions to the answer area and arrange them in the correct order. Select and Place:

**Select and Place:**

**Actions**

- Create an image version.
- Create an Azure compute gallery.
- Generate a snapshot of VM1.
- Create an image definition.
- Back up VM1.

**Answer Area**

↑

↓

**Correct Answer:**

**Actions**

- Generate a snapshot of VM1.
- Back up VM1.

**Answer Area**

- Create an Azure compute gallery.
- Create an image definition.
- Create an image version.

**Section:**

**Explanation:**

**QUESTION 23**

HOTSPOT

You have an Azure subscription.

You plan to deploy an Azure Virtual Desktop solution that will contain Windows 10 multi-session hosts in a single host pool. The solution has the requirements shown in the following table.

Requirement	Value
Total users	1,200
Shifts per day	3
Users per shift	400
User workload type	Medium
Concurrent users per session host	16

You need to configure the session host for the host pool. The solution must minimize costs.

How many session hosts should the host pool contain, and how many vCPUs should each session host have? To answer, select the appropriate options in the answer area. NOTE: Each correct selection is worth one point.

**Hot Area:**

Session hosts:

25
75
400
1200

vCPUs per session host:

2
4
8
16



**Answer Area:**

Session hosts:

25
75
400
1200

vCPUs per session host:

2
4
8
16

**Section:**

**Explanation:**

**QUESTION 24**

**HOTSPOT**

You have an Azure Virtual Desktop deployment that contains a host pool named HostPool1.

You need to perform the following configurations for HostPool1:

- Set the scale factor of the remote session to 125 percent.
- Generate a registration key that expires after five days.
- Enable Start VM on connect.

Which three settings should you modify? To answer, select the appropriate settings in the answer area. NOTE: Each correct selection is worth one point.

**Hot Area:**

**Answer Area**

The screenshot shows the Azure Virtual Desktop settings page. It is organized into three main sections:

- Overview:** Contains five items: Overview (selected), Activity log, Access control (IAM), Tags, and Diagnose and solve problems.
- Settings:** Contains five items: Scaling plan, RDP Properties, Properties, Scheduled agent updates, and Locks.
- Manage:** Contains three items: Application groups, MSIX packages, and Session hosts.

**Answer Area:**



## Answer Area

Overview

Activity log

Access control (IAM)

Tags

Diagnose and solve problems

**Settings**

Scaling plan

RDP Properties

Properties

Scheduled agent updates

Locks

**Manage**

Application groups

MSIX packages

Session hosts

**Section:**

**Explanation:**

### QUESTION 25

HOTSPOT

You have an Azure Virtual Desktop deployment that contains the resources shown in the following table.

Name	Description
Pool1	Personal host pool
Host1	Windows 11 session host in Pool1
Host2	Windows 11 session host in Pool1
AG1	RemoteApp app group that contains an app named App1
WS1	Workspace that publishes AG1

You need to perform the following configurations:



- Enable a managed identity for App1.
- Enable Clipboard redirection for App1.

On which resources should you perform the configurations? To answer, select the appropriate options in the answer area. NOTE: Each correct selection is worth one point.

Hot Area:

### Answer Area

Managed identity:

▼
AG1
Host1 and Host2
Pool1
WS1

Clipboard redirection:

▼
AG1
Host1 and Host2
Pool1
WS1

Answer Area:

## Answer Area

Managed identity:

▼
AG1
Host1 and Host2
Pool1
WS1

Clipboard redirection:

▼
AG1
Host1 and Host2
Pool1
WS1

Section:

Explanation:

### QUESTION 26

HOTSPOT

You have two Azure subscriptions that are linked to an Azure Active Directory (Azure AD) tenant named contoso.com and contain an Azure Virtual Desktop deployment. The tenant contains a user named User1. When User1 signs in to Azure Security Center, the user receives the message shown in the following exhibit.



You need to ensure that User1 can manage security information for the tenant. The solution must use the principle of least privilege. What should you do? To answer, select the appropriate options in the answer area.

NOTE: Each correct selection is worth one point.

Hot Area:

**Answer Area**

Role to assign to User1:

	▼
Security Admin at the root management group level	
Security Admin at the subscription level	
Security administrator for contoso.com	

Role required to assign the role to User1:

	▼
External Identity Provider administrator	
Global administrator	
Privileged role administrator	

Answer Area:

**Answer Area**

Role to assign to User1:

	▼
Security Admin at the root management group level	
Security Admin at the subscription level	
Security administrator for contoso.com	

Role required to assign the role to User1:

	▼
External Identity Provider administrator	
Global administrator	
Privileged role administrator	

Section:

Explanation:

**QUESTION 27**

DRAG DROP

Your on-premises network contains an Active Directory domain named fabrikam.com that syncs with Azure Active Directory (Azure AD). The domain contains a global group named AVDUsers. You have an Azure subscription that contains the resources shown in the following table.

Name	Type	Description
storage1	Storage account	Connections to storage1 are authenticated by using fabrikam.com.
Profiles1	Azure Files share	Profiles1 resides in storage1.
HostPool1	Azure Virtual Desktop host pool	HostPool1 contains all the session hosts joined to fabrikam.com.

All Azure Virtual Desktop users are members of the AVDusers group.

You plan to create FSLogix profile containers in Profiles1.

You need to configure Profiles1 and fabrikam.com to ensure that the HostPool1 sessions hosts can access the FSLogix profile containers. What should you do? To answer, drag the appropriate configurations to the correct targets. Each configuration may be used once, more than once, or not at all. You may need to drag the split bar between panes or scroll to view content.

Select and Place:

### Configurations

Assign Azure role-based access control (Azure RBAC) roles to AVDusers.

Create a computer account for storage1.

Generate a shared access signature (SAS).

Assign NTFS permissions to AVDusers.

Create a shared folder object for Profiles1.

### Answer Area

Profiles1:

Fabrikam.com:

Correct Answer:

### Configurations

Create a computer account for storage1.

Generate a shared access signature (SAS).

Create a shared folder object for Profiles1.

### Answer Area

Profiles1:

Fabrikam.com:



Assign NTFS permissions to AVDusers.

Assign Azure role-based access control (Azure RBAC) roles to AVDusers.

Section:

Explanation:

### QUESTION 28

HOTSPOT

You have an Azure Virtual Desktop deployment that contains two users named User1 and User2 and the storage accounts shown in the following table.



Name	Role
storage1	Storage File Data SMB Share Contributor assigned to User1 Storage File Data SMB Share Elevated Contributor assigned to User2
storage2	Storage File Data SMB Share Contributor assigned to User1 Owner assigned to User2

The File share settings for storage1 are configured as shown in the following exhibit.

Name	Modified	Transaction optimized	STIB
share1	10/9/2021, 4:30:53 AM	Transaction optimized	STIB
share2	10/9/2021, 4:34:05 AM	Hot	STIB
share3	10/9/2021, 4:34:29 AM	Cool	STIB

The File share settings for storage2 are configured as shown in the following exhibit.

Name	Modified	Transaction optimized	STIB
share4	10/9/2021, 4:45:20 AM	Transaction optimized	STIB

For each of the following statements, select Yes if the statement is true. Otherwise, select No.

NOTE: Each correct selection is worth one point.

Hot Area:

**Answer Area**

**Yes**

**No**

Statements		
User1 can access share1 by using Windows credentials.	<input type="radio"/>	<input type="radio"/>
User2 can access share4 by using Windows credentials.	<input type="radio"/>	<input type="radio"/>
User2 can enable SMB Multichannel for storage2.	<input type="radio"/>	<input type="radio"/>

Answer Area:

## Answer Area

### Statements

Yes

No

User1 can access share1 by using Windows credentials.

User2 can access share4 by using Windows credentials.

User2 can enable SMB Multichannel for storage2.

#### Section:

#### Explanation:

YES, NO , Yes

<https://docs.microsoft.com/en-us/azure/storage/files/storage-files-identity-ad-ds-assignpermissions?tabs=azure-portal> "Once you've enabled Active Directory Domain Services (AD DS) authentication on your storage account, you must configure share-level permissions in order to get access to your file shares. There are two ways you can assign share-level permissions. You can assign them to specific Azure AD users/user groups and you can assign them to all authenticated identities as a default share level permission."

#### QUESTION 29

You have an Azure Virtual Desktop deployment.

In Azure Advisor, you discover the following recommendation related to Azure Virtual Desktop:

Impact: Medium

Description: No validation environment enabled

Potential Benefit: Ensure business continuity through AVD service deployments Impacted Resource: 1 Host Pool What can you validate by implementing the recommendations?

- A. Security settings of Azure Virtual Desktop
- B. Capacity requirements of session hosts
- C. Azure Site Recovery failover of the session hosts
- D. Preview features for Azure Virtual Desktop

**Correct Answer: C**

#### Section:

#### Explanation:

<https://docs.microsoft.com/en-us/azure/virtual-desktop/azure-advisor-recommendations> <https://docs.microsoft.com/en-us/azure/virtual-desktop/disaster-recovery>

#### QUESTION 30

You have an Azure Virtual Desktop host pool.

You add a French language pack to each session host in the host pool.

Several days later, users report that English displays when they connect to Azure Virtual Desktop.

After an investigation, you discover that the French language pack was removed, and the session hosts reverted to English. You need to ensure that the French language pack is always available on the session hosts.

What should you do?

- A. Configure the international settings on each host
- B. Assign a default time zone on each host
- C. Apply a Group Policy setting to disable the Time & language settings
- D. Apply a Group Policy setting that blocks the cleanup of unused language packs

**Correct Answer: C**

**Section:**

**QUESTION 31**

**HOTSPOT**

You have an Azure Virtual Desktop deployment.

You are configuring the outbound firewall settings for the host pool.

Which outbound URL and outbound port should you configure to ensure that the host machines maintain Windows activation? To answer, select the appropriate options in the answer area.

NOTE: Each correct selection is worth one point.

**Hot Area:**

**Answer Area**

Outbound URL:

Outbound port:

**Answer Area:**

**Answer Area**

Outbound URL:

*.wvd.microsoft.us
*eh.servicebus.windows.net
gcs.prod.monitoring.core.windows.net
kms.core.windows.net

Outbound port:

80
389
443
1688

**Section:**

**Explanation:**

<https://docs.microsoft.com/en-us/azure/virtual-desktop/safe-url-list>

**QUESTION 32**

Note: This question is part of a series of questions that present the same scenario. Each question in the series contains a unique solution that might meet the stated goals. Some question sets might have more than one correct solution, while others might not have a correct solution.

After you answer a question in this section, you will NOT be able to return to it. As a result, these questions will not appear in the review screen.

You have an Azure Virtual Desktop host pool named Pool1 that is integrated with an Azure Active Directory Domain Services (Azure AD DS) managed domain.

You need to configure idle session timeout settings for users that connect to the session hosts in Pool1. Solution: From the Azure portal, you modify the Advanced settings in the RDP Properties of Pool1.

Does this meet the goal?

- A. Yes
- B. No

**Correct Answer: A**

**Section:**

**QUESTION 33**

You have an Azure Virtual Desktop deployment.

You need to create a PowerShell script to sign users out of a specific session host before you perform a maintenance task. Which PowerShell module should you load in the script?

- A. Az.Automation
- B. Az.Compute
- C. Az.Maintenance
- D. Az.DesktopVirtualization

**Correct Answer: D**

**Section:**

**Explanation:**

<https://docs.microsoft.com/en-us/powershell/module/az.desktopvirtualization/?view=azps-6.6.0#desktopvirtualization> <https://techgenix.com/logging-off-and-removing-wvd-user-sessions/>

**QUESTION 34**

**HOTSPOT**

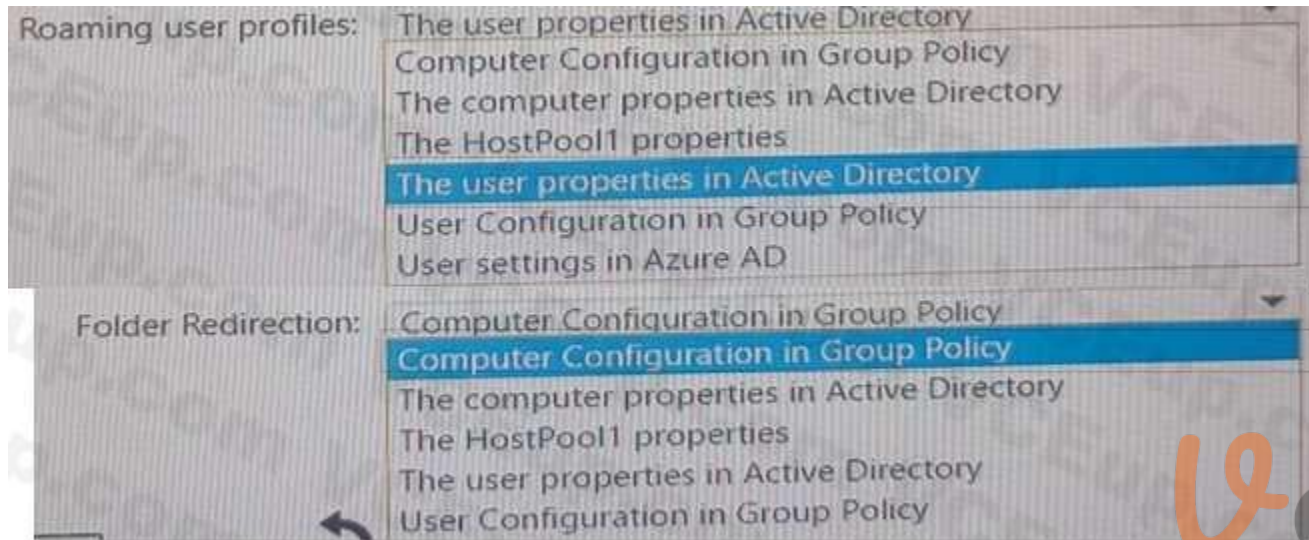
Your on-premises network contains an Active Directory domain named contoso.com that syncs with Azure AD. You deploy an Azure Virtual Desktop pooled host pool named HostPool1 that contains five hybridjoined session hosts. You need to ensure that all the user sessions of HostPool1 meet the following requirements:

- Users must use roaming user profiles.
- Users must use Folder Redirection.

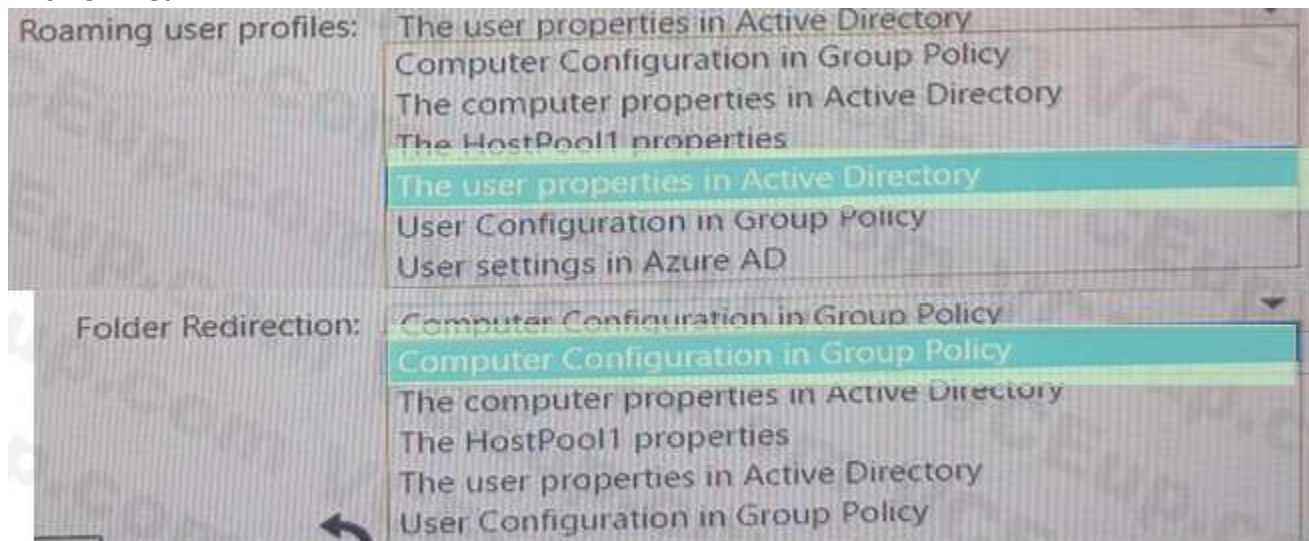
The solution must minimize administrative effort.

What should you use to meet each requirement? To answer, select the appropriate options in the answer area. NOTE: Each correct selection is worth one point.

**Hot Area:**



**Answer Area:**



**Section:**

**Explanation:**

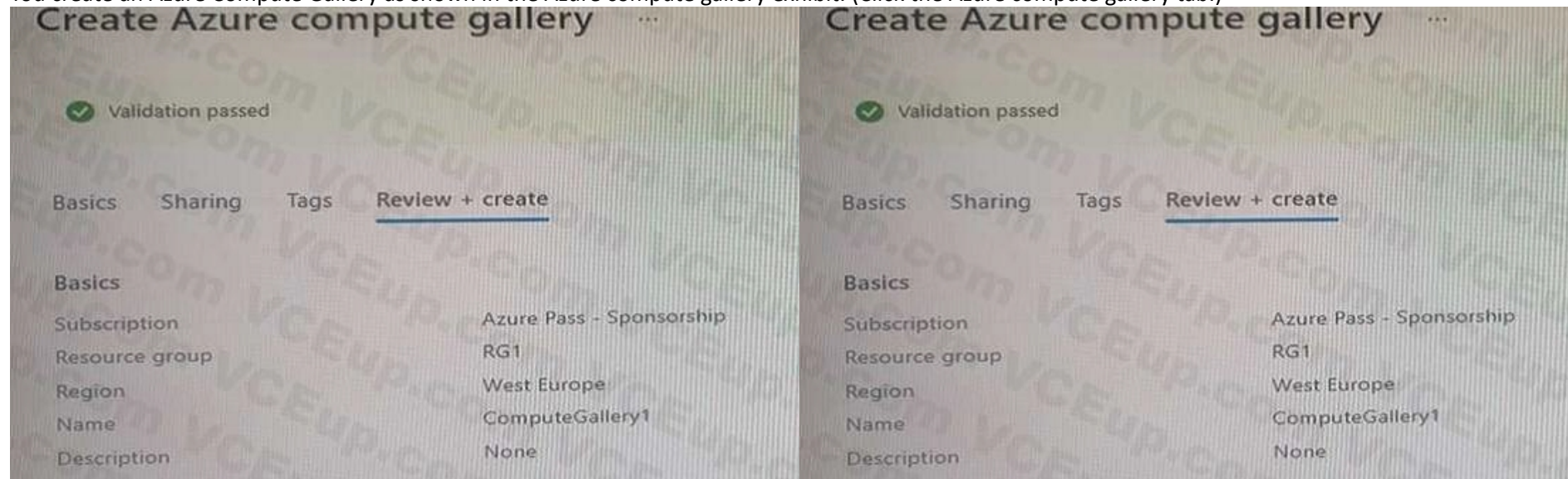
**QUESTION 35**

**HOTSPOT**

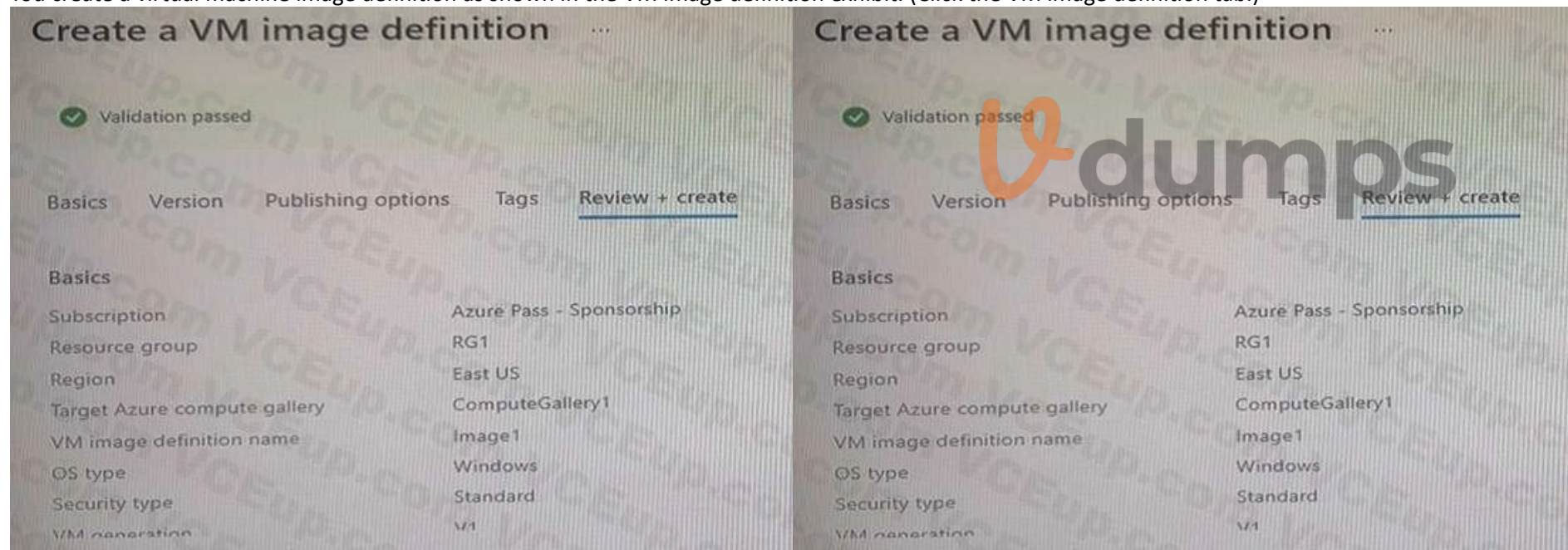
You have an Azure subscription that contains the virtual machines shown in the following table.

Name	Location	vCPUs	Generation
VM1	West Europe	8	2
VM2	East US	2	1
VM3	West US	12	1

You create an Azure Compute Gallery as shown in the Azure compute gallery exhibit. (Click the Azure compute gallery tab.)



You create a virtual machine image definition as shown in the VM image definition exhibit. (Click the VM image definition tab.)



Question	Azure compute gallery	VM image definition	Question	Azure compute gallery	VM image definition
Publisher	Contoso		Publisher	Contoso	
Offer	WindowsServer2022		Offer	WindowsServer2022	
SKU	Datacenter		SKU	Datacenter	
<b>Publishing options</b>			<b>Publishing options</b>		
Product name	None		Product name	None	
License terms link	None		License terms link	None	
Description	None		Description	None	
Release notes URI	None		Release notes URI	None	
Privacy terms URI	None		Privacy terms URI	None	
Purchase plan name	None		Purchase plan name	None	
Purchase plan publisher name	None		Purchase plan publisher name	None	
Recommended VM vCPUs	4-16		Recommended VM vCPUs	4-16	
Recommended VM memory	1-32 GB		Recommended VM memory	1-32 GB	
Excluded disk types	None		Excluded disk types	None	
VM image definition end of life date	None		VM image definition end of life date	None	

For each of the following statements, select Yes if the statement is true. Otherwise, select No.

**Hot Area:**

Statements	Yes	No
You can use VM1 as a source for the version of the image definition.	<input type="radio"/>	<input type="radio"/>
You can use VM2 as a source for the version of the image definition.	<input type="radio"/>	<input type="radio"/>
You can use VM3 as a source for the version of the image definition.	<input type="radio"/>	<input type="radio"/>

**Answer Area:**

Statements	Yes	No
You can use VM1 as a source for the version of the image definition.	<input type="radio"/>	<input checked="" type="radio"/>
You can use VM2 as a source for the version of the image definition.	<input type="radio"/>	<input checked="" type="radio"/>
You can use VM3 as a source for the version of the image definition.	<input type="radio"/>	<input checked="" type="radio"/>

**Section:**

**Explanation:**

**QUESTION 36**

**HOTSPOT**

You have an Azure Virtual Desktop deployment that contains a host pool named HostPool1.

You plan to deploy session hosts to HostPool1 as shown in the following table.

Name	Operating system	Security type
Host1	Windows Server 2019	Trusted launch
Host2	Windows 10	Standard

Each session host must support up to 15 concurrent users.

You need to recommend which operating system version to deploy from Azure Marketplace to the session hosts.

What should you recommend for each session host? To answer, select the appropriate options in the answer area.

**Hot Area:**

Answer Area

Host1:

Host2:

**Answer Area:**

Answer Area

Host1:

Host2:

**Section:**

**Explanation:**

**QUESTION 37**

You have an Azure Virtual Desktop deployment that contains two host pools named Pool1 and Pool2.

Pool1 contains 10 session hosts and supports 100 concurrent users. Pool2 contains two session hosts and supports 20 concurrent users.

You need to recommend an Azure Virtual Desktop update solution that meets the following requirements:

- \* All service updates must be tested before reaching general availability.
- \* Testing must have a minimal impact on the organization.
- \* No new host pools can be created.

What should you include in the recommendation?

- A. From the properties of Pool2, enable the validation environment.
- B. From the properties of Pool2, assign a scaling plan.
- C. From the properties of Pool1, enable the validation environment.



D. From the properties of Pool1, assign a scaling plan.

**Correct Answer: A**

**Section:**

