

Microsoft.AZ-800.vMay-2024.by.HungToan.94q

Number: AZ-800
Passing Score: 800
Time Limit: 120
File Version: 23.0

Exam Code: AZ-800
Exam Name: Administering Windows Server Hybrid Core Infrastructure



Case 01

Contoso Ltd

This is a case study. Case studies are not timed separately. You can use as much exam time as you would like to complete each case. However, there may be additional case studies and sections on this exam. You must manage your time to ensure that you are able to complete all questions included on this exam in the time provided.

To answer the questions included in a case study, you will need to reference information that is provided in the case study. Case studies might contain exhibits and other resources that provide more information about the scenario that is described in the case study. Each question is independent of the other questions in this case study.

At the end of this case study, a review screen will appear. This screen allows you to review your answers and to make changes before you move to the next section of the exam. After you begin a new section, you cannot return to this section.

To start the case study

To display the first question in this case study, click the Next button. Use the buttons in the left pane to explore the content of the case study before you answer the questions. Clicking these buttons displays information such as business requirements, existing environment, and problem statements, if the case study has an All Information tab. Note that the information displayed is identical to the information displayed on the subsequent tabs.

When you are ready to answer a question, click the

Qbutton to return to the question.

AD DS Environment

The network contains an on-premises Active Directory Domain Services (AD DS) forest named contoso.com. The forest contains two domains named contoso.com and canada.contoso.com. The forest contains the domain controllers shown in the following table.

| Name | Domain | Active Directory site |
|------|--------------------|-----------------------|
| DC1 | contoso.com | Seattle |
| DC2 | contoso.com | Los Angeles |
| DC3 | canada.contoso.com | Montreal |
| DC4 | contoso.com | Montreal |
| DC5 | canada.contoso.com | Seattle |

All the domain controllers are global catalog servers.

Server Infrastructure

The network contains the servers shown in the following table.

| Name | Organizational unit (OU) | Server role | Domain | Active Directory site |
|---------|--------------------------|-------------|--------------------|-----------------------|
| Server1 | Member Servers | None | canada.contoso.com | Montreal |
| Server2 | Member Servers | Hyper-V | canada.contoso.com | Montreal |
| Server3 | Member Servers | None | canada.contoso.com | Montreal |

A server named Server4 runs Windows Server and is in a workgroup. Windows Firewall on Server4 uses the private profile.

Server2 hosts three virtual machines named VM1, VM2, and VM3.

VM3 is a file server that stores data in the volumes shown in the following table.

| Name | File system |
|------|-------------|
| C | NTFS |
| D | NTFS |
| E | ReFS |
| F | ExFAT |

Group Policies

The contoso.com domain has the Group Policies Objects (GPOs) shown in the following table.

| Name | Minimum password length | Linked to |
|-----------------------|-------------------------|----------------|
| GPO1 | 14 | OU1 |
| GPO2 | 8 | Member Servers |
| Default Domain Policy | 10 | contoso.com |



Existing Identities

The forest contains the users shown in the following table.

| Name | In OU | Member of |
|----------------|-------------|---------------------------|
| Contoso\Admin1 | Contoso\OU1 | Contoso\Enterprise Admins |
| Contoso\Admin2 | Contoso\OU1 | Contoso\Domain Admins |
| Canada\Admin3 | Canada\OU2 | Canada\Domain Admins |
| Contoso\User1 | Contoso\OU3 | Contoso\Domain Users |

The forest contains the groups shown in the following table.

| Name | Domain | Type |
|--------|--------------------|---------------------------------|
| Group1 | contoso.com | Universal security group |
| Group2 | contoso.com | Global security group |
| Group3 | contoso.com | Domain local security group |
| Group4 | canada.contoso.com | Global distribution group |
| Group5 | canada.contoso.com | Global distribution group |
| Group6 | canada.contoso.com | Domain local distribution group |

Current Problems

When an administrator signs in to the console of VM2 by using Virtual Machine Connection, and then disconnects from the session without signing out another administrator can connect to the console session as the currently signed-in user.

Requirements

Contoso identifies the following technical requirements:

- Change the replication schedule for all site links to 30 minutes.
- Promote Server1 to a domain controller in canada.contoso.com.
- Install and authorize Server3 as a DHCP server.
- Ensure that User1 can manage the membership of all the groups in Contoso\OU3.
- Ensure that you can manage Server4 from Server1 by using PowerShell removing.
- Ensure that you can run virtual machines on VM1.
- Force users to provide credentials when they connect to VM2.
- On VM3, ensure that Data Deduplication on all volumes is possible.

QUESTION 1

HOTSPOT

You need to meet the technical requirements for Server4.

Which cmdlets should you run on Server1 and Server4? To answer, select the appropriate options in the answer area. NOTE: Each correct selection is worth one point.



Hot Area:

Server1:

| |
|--|
| Enable-PSRemoting |
| Enable-ServerManagerStandardUserRemoting |
| Set-Item |
| Start-Service |

Server4:

| |
|--|
| Enable-PSRemoting |
| Enable-ServerManagerStandardUserRemoting |
| Set-Item |
| Start-Service |

Answer Area:

| Server1: |
|--|
| Enable-PSRemoting |
| Enable-ServerManagerStandardUserRemoting |
| Set-Item |
| Start-Service |

| Server4: |
|--|
| Enable-PSRemoting |
| Enable-ServerManagerStandardUserRemoting |
| Set-Item |
| Start-Service |

Section:

Explanation:

QUESTION 2

You need to meet the technical requirements for the site links. Which users can perform the required tasks?

- A. Admin1 only
- B. Admin1 and Admin3 only
- C. Admin1 and Admin2 only
- D. Admin3 only
- E. Admin1, Admin2, and Admin3

Correct Answer: C

Section:

Explanation:

Membership in the Enterprise Admins group or the Domain Admins group in the forest root domain is required.

QUESTION 3

You need to meet the technical requirements for VM3
On which volumes can you enable Data Deduplication?

- A. D and E only
- B. C, D, E, and F
- C. D only
- D. C and D only
- E. D, E, and F only

Correct Answer: A

Section:

Explanation:

Reference:

<https://docs.microsoft.com/en-us/windows-server/storage/data-deduplication/interop>



QUESTION 4

You need to meet the technical requirements for User1. The solution must use the principle of least privilege. What should you do?

- A. Add Users1 to the Server Operators group in contoso.com.
- B. Create a delegation on contoso.com.
- C. Add Users1 to the Account Operators group in contoso.com.
- D. Create a delegation on OU3.

Correct Answer: D

Section:

Explanation:

Reference:

<https://docs.microsoft.com/en-us/windows-server/identity/ad-ds/plan/delegating-administrationof-account-ous-and-resource-ous>

QUESTION 5

You need to meet the technical requirements for VM2.

What should you do?

- A. Implement shielded virtual machines.
- B. Enable the Guest services integration service.
- C. Implement Credential Guard.
- D. Enable enhanced session mode.

Correct Answer: D

Section:

**QUESTION 6**

You need to meet the technical requirements for Server1. Which users can currently perform the required tasks?

- A. Admin1 only
- B. Admin3 only
- C. Admin1 and Admin3 only
- D. Admin1 Admin2. and Admm3

Correct Answer: C

Section:

QUESTION 7

HOTSPOT

You need to meet the technical requirements for VM1.

Which cmdlet should you run first? To answer, select the appropriate options in the answer area.

NOTE: Each correct selection is worth one point.

Hot Area:



Answer Area:



Section:

Explanation:

QUESTION 8

HOTSPOT

Which groups can you add to Group3 and Group5? To answer, select the appropriate options in the answer area. NOTE: Each correct selection is worth one point.

Hot Area:

Group3:

| |
|--|
| Group6 only |
| Group1 and Group2 only |
| Group1 and Group4 only |
| Group1, Group2, Group4, and Group5 only |
| Group1, Group2, Group4, Groups, and Group6 |

Group5:

| |
|------------------------|
| Group1 only |
| Group4 only |
| Group6 only |
| Group2 and Group4 only |
| Group4 and Group6 only |

Answer Area:

| Group3: |
|--|
| Group6 only |
| Group1 and Group2 only |
| Group1 and Group4 only |
| Group1, Group2, Group4, and Group5 only |
| Group1, Group2, Group4, Groups, and Group6 |

| Group5: |
|------------------------|
| Group1 only |
| Group4 only |
| Group6 only |
| Group2 and Group4 only |
| Group4 and Group6 only |

Section:

Explanation:

QUESTION 9

HOTSPOT

For each of the following statements, select Yes if the statement is true. Otherwise, select No.

NOTE: Each correct selection is worth one point.



Hot Area:

Answer Area

Statements

Admin1 must use a password that has at least 14 characters.

Yes

No

User1 must use a password that has at least 10 characters.

If Admin1 creates a new local user on Server1, the password for the new user must be at least eight characters.

Answer Area:

Answer Area

Statements

Admin1 must use a password that has at least 14 characters.

Yes

No

User1 must use a password that has at least 10 characters.

If Admin1 creates a new local user on Server1, the password for the new user must be at least eight characters.

Section:

Explanation:

Case 02

This is a case study. Case studies are not timed separately. You can use as much exam time as you would like to complete each case. However, there may be additional case studies and sections on this exam. You must manage

your time to ensure that you are able to complete all questions included on this exam in the time provided.

To answer the questions included in a case study, you will need to reference information that is provided in the case study. Case studies might contain exhibits and other resources that provide more information about the scenario that is described in the case study. Each question is independent of the other questions in this case study.

At the end of this case study, a review screen will appear. This screen allows you to review your answers and to make changes before you move to the next section of the exam. After you begin a new section, you cannot return to this section.

To start the case study

To display the first question in this case study, click the Next button. Use the buttons in the left pane to explore the content of the case study before you answer the questions. Clicking these buttons displays information such as business requirements, existing environment, and problem statements, if the case study has an All Information tab. Note that the information displayed is identical to the information displayed on the subsequent tabs.

When you are ready to answer a question, click the

Qbutton to return to the question.

Overview

Fabrikam, Inc. is a manufacturing company that has a main office in New York and a branch office in Seattle.

On-premises Servers

The on-premises network contains servers that run Windows Server as shown in the following table.

| Name | Configuration | Office |
|-------|--------------------|----------|
| AADC1 | Azure AD Connect | New York |
| APP1 | Application server | New York |
| APP2 | Application server | Seattle |
| DC1 | Domain controller | New York |
| DC2 | Domain controller | Seattle |
| DHCP1 | DHCP server | New York |
| DHCP2 | DHCP server | Seattle |
| FS1 | File server | New York |
| FS2 | File server | Seattle |
| VM1 | None | New York |
| VM2 | None | Seattle |
| WEB1 | Web server | New York |
| WEB2 | Web server | Seattle |

DC1 hosts all the operation master roles.

WEB1 and WEB2 run an Internet Information Services (IIS) web app named Webapp1.

On-premises Network

The New York and Seattle offices are connected by using redundant WAN links.

The client computers in each office get IP addresses from their local DHCP server.

DHCP1 contains a scope named Scope1 that has addresses for the New York office. DHCP2 contains a scope named Scope2 that has addresses for the Seattle office.

Group Policy Object (GPOs)

The cwp.fabrikam.com domain contains the organizational units (OUs) and custom Group Policy Objects (GPOs) shown in the following table.



| OU name | Linked GPO | Description |
|-----------------|------------|--|
| AllUsers | GPO1 | Contains all the user accounts in the domain |
| AllComputers | GPO2 | Contains all the computer accounts for the client computers in the domain |
| AllServers | GPO3 | Contains all the computer accounts for Windows servers |
| VirtualDesktops | GPO4 | A new OU that will contain the computers account for Azure Virtual Desktop session hosts |

Requirements:

Fabrikam identifies the following planned changes:

- Create a single Azure subscription named Sub1 that will contain a single Azure virtual network named Vnet1.
- Replace the WAN links between the Seattle and New York offices by using Azure Virtual WAN and ExpressRoute. Both on-premises offices will be connected to Vnet1 by using ExpressRoute.
- Create three Azure file shares named newyorkfiles, seattlefiles, and companyfiles.
- Create a domain controller named dc3.corp.fabrikam.com in Vnet1.
- Deploy an Azure Virtual Desktop host pool to Vnet1. The Azure Virtual Desktop session hosts will be hybrid Azure AD joined.
- License all servers for Microsoft Defender for servers.
- Use Azure Policy to enforce configuration management policies on the servers in Azure and onpremises.

Networking Requirements

Fabrikam identifies the following security requirements:

- Apply GPO4 to the Azure Virtual Desktop session hosts. Ensure that Azure Virtual Desktop user sessions lock after being idle for 10 minutes. Users must be able to control the lockout time manually from their client computer.
- Ensure that server administrators request approval before they can establish a Remote Desktop connection to an Azure virtual machine. If the request is approved, the connection must be established within two hours.
- Prevent user passwords from containing all or part of words that are based on the company name, such as Fab, fabrikam or fsbr! |.
- Ensure that all instances of Webapp1 use the same service account. The password of the service account must change automatically every 30 days.
- Prevent domain controllers from directly contacting hosts on the internet.

File Sharing Requirements

You need to configure the synchronization of Azure files to meet the following requirements:

- Ensure that seattlefiles syncs to FS2.
- Ensure that newyorkfiles syncs to FS1.
- Ensure that companyfiles syncs to both FS1 and FS2.

QUESTION 1

HOTSPOT

You need to configure network communication between the Seattle and New York offices. The solution must meet the networking requirements. What should you configure? To answer, select the appropriate options in the answer area.

NOTE: Each correct selection is worth one point.

Hot Area:

| | |
|-----------------------|------------------------------------|
| On a Virtual WAN hub: | |
| | An ExpressRoute gateway |
| | A virtual network gateway |
| | An ExpressRoute circuit connection |
| In the offices: | |
| | An ExpressRoute circuit connection |
| | A Site to-Site VPN |
| | An Azure application gateway |
| | An on premises data gateway |

Answer Area:

| | |
|-----------------------|------------------------------------|
| On a Virtual WAN hub: | |
| | An ExpressRoute gateway |
| | A virtual network gateway |
| | An ExpressRoute circuit connection |
| In the offices: | |
| | An ExpressRoute circuit connection |
| | A Site to-Site VPN |
| | An Azure application gateway |
| | An on premises data gateway |

 Vdumps

Section:

Explanation:

QUESTION 2

You need to implement the planned changes for the Azure DNS Private Resolver. Which private DNS zones can you use for name resolution?

- A. Zone1.com only
- B. Zone2.com only
- C. Zone1.com and Zone2.com only
- D. Zone2.com and Zone3.com only
- E. Zone1.com, Zone2.com, and Zone3.com

Correct Answer: A

Section:

QUESTION 3

You need to ensure that Automanage meets the technical requirements.

On which Azure virtual machines should you enable Automanage?

- A. Server1 only
- B. Server2 only
- C. Server1 and Server2 only
- D. Server2 and Server3 only
- E. Server1 and Server4 only

Correct Answer: D

Section:

QUESTION 4

Which two languages can you use for Task1? Each correct answer presents a complete solution.

NOTE: Each correct selection is worth one point.

- A. Java
- B. Bicep
- C. JavaScript
- D. Python
- E. PowerShell

Correct Answer: D, E

Section:

QUESTION 5

DRAG DROP

DC1 fails.

You need to meet the technical requirements for the schema master.

Yourunntdsutil.exe.

Which five commands should you run in sequence? To answer, move the appropriate commands from the list of commands to the answer area and arrange them in the correct order?

Select and Place:

Commands

- metadata cleanup
- roles
- connect
- connect to server dc2.adatum.com
- quit
- seize schema master



Answer Area



Correct Answer:

Commands

Answer Area



Section:

Explanation:

- roles
- connect
- connect to server dc2.adatum.com
- quit
- seize schema master



QUESTION 6

DRAG DROP

You need to implement the planned change for Data1.

Which actions should you perform in sequence? To answer, drag the appropriate actions to the correct order. Each action may be used once, more than once, or not at all. You may need to drag the split bar between panes or scroll to view content.

NOTE: Each correct selection is worth one point.

Select and Place:

Actions

- Add a server endpoint.
- Create a sync group.
- Deploy the Azure Storage Sync service.
- Install the DFS Replication role service.
- Install the Storage Replica feature.

Answer Area

Step 1:

Step 2: Install and register the Azure File Sync agent.

Step 3:

Step 4:

Correct Answer:

Actions

| |
|---|
| |
| |
| |
| Install the DFS Replication role service. |
| Install the Storage Replica feature. |

Answer Area

| | |
|---------|---|
| Step 1: | Deploy the Azure Storage Sync service. |
| Step 2: | Install and register the Azure File Sync agent. |
| Step 3: | Create a sync group. |
| Step 4: | Add a server endpoint. |

Section:

Explanation:

QUESTION 7

You need to ensure that VM3 meets the technical requirements. What should you install first?

- A. Enhanced Storage
- B. File Server Resource Manager (FSRM)
- C. Windows Standards-Based Storage Management
- D. the iSNS Server service

Correct Answer: B

Section:

QUESTION 8

You need to ensure that access to storage1 for the Marketing OU users meets the technical requirements. What should you implement?

- A. Microsoft Entra Connect cloud sync
- B. Active Directory Federation Services (AD FS)
- C. Microsoft Entra Connect in staging mode
- D. Microsoft Entra Connect in active mode

Correct Answer: A

Section:

QUESTION 9

HOTSPOT

You need to meet technical requirements for HyperV1.

Which command should you run? To answer, select the appropriate options in the answer area.

NOTE: Each correct selection is worth one point.



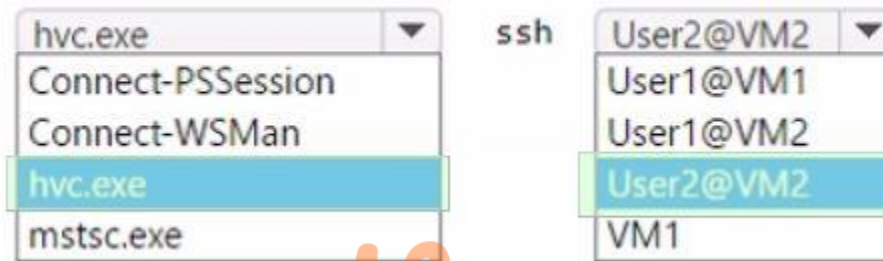
Hot Area:

Answer Area



Answer Area:

Answer Area



Section:

Explanation:

Exam A

QUESTION 1

You plan to deploy a containerized application that requires .NET Core.

You need to create a container image for the application. the image must be as small as possible.

Which base image should you use?

- A. Nano Server
- B. Server Cote
- C. Windows Server
- D. Windows

Correct Answer: A

Section:

Explanation:

Reference:

<https://techcommunity.microsoft.com/t5/containers/nano-server-x-server-core-x-server-whichbase-image-is-the-right/ba-p/2835785>

QUESTION 2

You haw an Azure virtual machine named VM1 that runs Windows Server

You need to configure the management of VM1 to meet the following requirements:

- Require administrators to request access to VM1 before establishing a Remote Desktop connection.
- Limit access to VM1 from specific source IP addresses.
- Limit access to VMI to a specific management port

What should you configure?

- A. a network security group (NSG)
- B. Azure Active Directory (Azure AD) Privileged identity Management (PIM)
- C. Azure Front Door
- D. Microsoft Defender for Cloud

Correct Answer: D

Section:

Explanation:

Reference:

<https://docs.microsoft.com/en-us/azure/defender-fo>

QUESTION 3

You have a server named Host1 that has the Hyper-V server role installed. Host1 hosts a virtual machine named VM1. You have a management server named Server1 that runs Windows Server. You remotely manage Host1 from Server1 by using Hyper-V Manager. You need to ensure that you can access a USB hard drive connected to Server1 when you connect to VM1 by using Virtual Machine Connection. Which two actions should you perform? Each correct answer presents part of the solution.

NOTE: Each correct selection is worth one point.

- A. From the Hyper-V Settings of Host1, select Allow enhanced session mode
- B. From Disk Management on Host1, attach a virtual hard disk.
- C. From Virtual Machine Connection, switch to a basic session.
- D. From Virtual Machine Connection select Show Options and then select the USB hard drive.
- E. From Disk Management on Host1, select Rescan Disks



Correct Answer: A, D

Section:

Explanation:

Reference:

<https://docs.microsoft.com/en-us/windows-server/virtualization/hyper-v/learn-more/use-localresources-on-hyper-v-virtual-machine-with-vmconnect>

QUESTION 4

Your network contains an on-premises Active Directory Domain Services (AD DS) domain named contoso.com. The domain contains three servers that run Windows Server and have the Hyper-V server role installed. Each server has a Switch Embedded Teaming (SET) team. You need to verify that Remote Direct Memory Access (RDMA) and all the required Windows Server settings are configured properly on each server. What should you use?

- A. Server Manager
- B. the validate-DCB cmdlet
- C. the Get-NetAdaptor cmdlet
- D. Failover Cluster Manager

Correct Answer: B

Section:

Explanation:

Reference:

<https://github.com/Microsoft/Validate-DCB>

QUESTION 5

You have five file servers that run Windows Server.

You need to block users from uploading video files that have the .mov extension to shared folders on the file servers. All other types of files must be allowed. The solution must minimize administrative effort. What should you create?

- A. a Dynamic Access Control central access policy
- B. a file screen
- C. a Dynamic Access Control central access rule
- D. a data loss prevention (DLP) policy

Correct Answer: B

Section:

Explanation:

Reference:

<https://docs.microsoft.com/en-us/windows-server/storage/fsrm/file-screening-management>

QUESTION 6

You have a server named Server1 that runs Windows Server. Server1 has the storage pools shown in the following table.

| Name | Number of 7,200-RPM HDDs | Number of 10,000-RPM HDDs | Number of SSDs |
|-------|--------------------------|---------------------------|----------------|
| Pool1 | 4 | 4 | None |
| Pool2 | None | 2 | 2 |
| Pool3 | 8 | None | 4 |

You plan to create a virtual disk named VDisk1 that will use storage tiers. Which pools can you use to create VDisk1 ?

- A. Pool2 and Pool3 only
- B. Pool 2only
- C. Pool only
- D. Pool, Pool2, and Pool3
- E. Pool1 and Pool2 only
- F. Pool1 and Pool3 only
- G. Pool3 only

Correct Answer: A

Section:

Explanation:

Storage tiering requires both standard HDDs and SSDs. We cannot use Pool1 because it does not have any SSDs.

QUESTION 7

You have an on-premises Active Directory Domain Services (AD DS) domain that syncs with an Azure Active Directory (Azure AD) tenant. You plan deploy 100 new Azure virtual machines that will run Windows Server. You need to ensure that each new virtual machine is joined to the AD DS domain.

What should you use?

- A. Azure AD Connect
- B. a Group Policy Object (GPO)

- C. an Azure Resource Manager (ARM) template
- D. an Azure management group

Correct Answer: C

Section:

Explanation:

Reference:

<https://www.ludovicmedard.com/create-an-arm-template-of-a-virtual-machine-automaticallyjoined-to-a-domain/>

QUESTION 8

You have an on-premises Active Directory Domain Services (AD DS) domain that syncs with an Azure Active Directory (Azure AD) tenant. You have several Windows 10 devices that are Azure AD hybrid-joined. You need to ensure that when users sign in to the devices, they can use Windows Hello for Business.

Which optional feature should you select in Azure AD Connect?

- A. Device writeback
- B. Group writeback
- C. Password writeback
- D. Directory extension attribute sync
- E. Azure AD app and attribute filtering

Correct Answer: A

Section:

Explanation:



QUESTION 9

Your network contains an on-premises Active Directory Domain Services (AD DS) domain named contoso.com. The domain contains the objects shown in the following table.

| Name | Type |
|-----------|-----------------------------|
| User1 | User |
| Group1 | Universal security group |
| Group2 | Domain local security group |
| Computer1 | Computer |

You plan to sync contoso.com with an Azure Active Directory (Azure AD) tenant by using Azure AD Connect. You need to ensure that all the objects can be used in Conditional Access policies. What should you do?

- A. Change the scope of Group2 to Universal
- B. Clear the Configure device writeback option.
- C. Change the scope of Group1 and Group2 to Global
- D. Select the Configure Hybrid Azure AD join option.

Correct Answer: D

Section:

Explanation:

Hybrid Azure AD join needs to be configured to enable Computer1 to be used in Conditional Access Policies. Synchronized users, universal groups and domain local groups can be used in Conditional Access Policies.

QUESTION 10

Your network contains a multi-site Active Directory Domain Services (AD DS) forest. Each Active Directory site is connected by using manually configured site links and automatically generated connections. You need to minimize the convergence time for changes to Active Directory. What should you do?

- A. For each site link, modify the options attribute.
- B. For each site link, modify the site link costs.
- C. For each site link, modify the replication schedule.
- D. Create a site link bridge that contains all the site links.

Correct Answer: C

Section:

Explanation:

Reference:

<https://docs.microsoft.com/en-us/windows-server/identity/ad-ds/plan/determining-the-interval>

QUESTION 11

Your network contains an Active Directory Domain Services (AD DS) domain- The domain contains 10 servers that run Windows Server. The servers have static IP addresses. You plan to use DHCP to assign IP addresses to the servers.

You need to ensure that each server always receives the same IP address.

Which type of identifier should you use to create a DHCP reservation for each server?

- A. universally unique identifier (UUID)
- B. fully qualified domain name (FQDN)
- C. NetBIOS name
- D. MAC address



Correct Answer: D

Section:

Explanation:

Reference:

<https://docs.microsoft.com/en-us/powershell/module/dhcpserver/adddhcpserverv4reservation?view=windowsserver2022-ps>

QUESTION 12

You have an on-premises server named Server1 that runs Windows Server. You have an Azure virtual network that contains an Azure virtual network gateway. You need to connect only Server1 to the Azure virtual network. What should you use?

- A. Azure Network Adapter
- B. a Site-to-SiteVPN
- C. an ExpressRoute circuit
- D. Azure Extended Network

Correct Answer: B

Section:

Explanation:

QUESTION 13

You have a server that runs Windows Server and has the DHCP Server role installed. The server has a scope named Scope1 that has the following configurations:

- Address range: 192.168.0.2 to 192.168.1.254 . Mask 255.255.254.0
- Router: 192.168.0.1
- Lease duration: 3 days
- DNS server 172.16.0.254

You have 50 Microsoft Teams Phone devices from the same vendor. All the devices have MAC addresses within the same range. You need to ensure that all the Teams Phone devices that receive a lease from Scope1 have IP addresses in the range of 192.168.1.100 to 192.168.1.200. The solution must NOT affect other DHCP clients that receive IP configurations from Scope1. What should you create?

- A. a policy
- B. a scope
- C. a filter
- D. scope options

Correct Answer: A

Section:

Explanation:

Reference:

[https://docs.microsoft.com/en-us/previous-versions/windows/it-pro/windows-server-2012-R2-and-2012/dn425040\(v=ws.11\)](https://docs.microsoft.com/en-us/previous-versions/windows/it-pro/windows-server-2012-R2-and-2012/dn425040(v=ws.11))

QUESTION 14

You have an on-premises Active Directory Domain Services (AD DS) domain that syncs with an Azure Active Directory (Azure AD) tenant. The on-premises network is connected to Azure by using a Site-to-Site VPN. You have the DNS zones shown in the following table.

| Name | Location | Description |
|--------------|--|---|
| contoso.com | A domain controller named DC1 on the on-premises network | Provides name resolution on-premises |
| fabrikam.com | An Azure private DNS zone | Provides name resolution for all Azure virtual networks |

You need to ensure that names from fabrikam.com can be resolved from the on-premises network. Which two actions should you perform? Each correct answer presents part of the solution. NOTE: Each correct selection is worth one point.

- A. Create a conditional forwarder for fabrikam.com on DC1.
- B. Create a stub zone for fabrikam.com on DC1.
- C. Create a secondary zone for fabrikam.com on DC1.
- D. Deploy an Azure virtual machine that runs Windows Server. Modify the DNS Servers settings for the virtual network.
- E. Deploy an Azure virtual machine that runs Windows Server. Configure the virtual machine as a DNS forwarder.

Correct Answer: A, E

Section:

Explanation:

Reference:

<https://docs.microsoft.com/en-us/azure/private-link/private-endpoint-dns#on-premises-workloads-using-a-dns-forwarder>

QUESTION 15

Your company has a main office and a branch office. The two offices are connected by using a WAN link. Each office contains a firewall that filters WAN traffic. The network in the branch office contains 10 servers that run Windows Server. All servers are administered from the main office only. You plan to manage the servers in the branch office by using a Windows Admin Center gateway.

On a server in the branch office, you install the Windows Admin Center gateway by using the default settings. You need to configure the firewall in the branch office to allow the required inbound connection to the Windows Admin Center gateway. Which inbound TCP port should you allow?

- A. 443
- B. 3389
- C. 5985
- D. 6516

Correct Answer: A

Section:

QUESTION 16

You have an Azure subscription that contains the following resources:

- An Azure Log Analytics workspace
- An Azure Automation account
- Azure Arc.

You have an on-premises server named Server1 that is onboarded to Azure Arc. You need to manage Microsoft updates on Server1 by using Azure Arc. Which two actions should you perform? Each correct answer presents part of the solution.

NOTE: Each correct selection is worth one point

- A. Add Microsoft Sentinel to the Log Analytics workspace
- B. On Server1, install the Azure Monitor agent
- C. From the Automation account, enable Update Management for Server1.
- D. From the Virtual machines data source of the Log Analytics workspace, connect Server1.

Correct Answer: B, C

Section:

Explanation:

Reference:

<https://docs.microsoft.com/en-us/azure/cloud-adoption-framework/manage/hybrid/server/bestpractices/arc-update-management>



QUESTION 17

You have an Azure virtual machine named VM1 that has a private IP address only.

You configure the Windows Admin Center extension on VM1.

You have an on-premises computer that runs Windows 11. You use the computer for server management.

You need to ensure that you can use Windows Admin Center from the Azure portal to manage VM1.

What should you configure?

- A. an Azure Bastion host on the virtual network that contains VM1.
- B. a VPN connection to the virtual network that contains VM1.
- C. a network security group (NSG) rule that allows inbound traffic on port 443.
- D. a private endpoint on the virtual network that contains VM1.

Correct Answer: B

Section:

Explanation:

Reference:

<https://docs.microsoft.com/en-us/windows-server/manage/windows-admin-center/azure/managevm>

QUESTION 18

Note: This question is part of a series of questions that present the same scenario. Each question in the series contains a unique solution that might meet the stated goals. Some question sets might have more than one correct solution, while others might not have a correct solution.

After you answer a question in this section, you will NOT be able to return to it. As a result, these questions will not appear in the review screen. Your network contains an Active Directory Domain Services (AD DS) forest. The forest contains three Active Directory sites named Site1, Site2, and Site3. Each site contains two domain controllers. The sites are connected by using DEFAULTIPSITELINK.

You open a new branch office that contains only client computers.

You need to ensure that the client computers in the new office are primarily authenticated by the domain controllers in Site1. Solution: You create an organization unit (OU) that contains the client computers in the branch office. You configure the Try Next Closest Site Group Policy Object (GPO) setting in a GPO that is linked to the new OU. Does this meet the goal?

- A. Yes
- B. No

Correct Answer: B

Section:

QUESTION 19

Your network contains an Active Directory Domain Services (AD DS) forest. The forest contains three Active Directory sites named Site1, Site2, and Site3. Each site contains two domain controllers. The sites are connected by using DEFAULTIPSITELINK.

You open a new branch office that contains only client computers.

You need to ensure that the client computers in the new office are primarily authenticated by the domain controllers in Site1. Solution: You configure the Try Next Closest Site Group Policy Object (GPO) setting in a GPO that is linked to Site1. Does this meet the goal?

- A. Yes
- B. No

Correct Answer: B

Section:



QUESTION 20

Your network contains an Active Directory Domain Services (AD DS) forest. The forest contains three Active Directory sites named Site1, Site2, and Site3. Each site contains two domain controllers. The sites are connected by using DEFAULTIPSITELINK.

You open a new branch office that contains only client computers.

You need to ensure that the client computers in the new office are primarily authenticated by the domain controllers in Site1. Solution: You create a new subnet object that is associated to Site1. Does this meet the goal?

- A. Yes
- B. No

Correct Answer: B

Section:

QUESTION 21

Your network contains an Active Directory Domain Services (AD DS) domain named contoso.com.

You need to identify which server is the PDC emulator for the domain.

Solution: From a command prompt, you run netdom.exe query fsmo.

Does this meet the goal?

- A. Yes
- B. No

Correct Answer: A

Section:

Explanation:

Reference:

<https://activedirectorypro.com/how-to-check-fsmo-roles/>

QUESTION 22

Your network contains an Active Directory Domain Services (AD DS) domain named conioso.com.

You need to identify which server is the PDC emulator for the domain.

Solution: from Active Directory Users and Computers, you right-click contoso.com in the console tree, and then select Operations Master Does this meet the goal?

A. Yes

B. No

Correct Answer: A

Section:

QUESTION 23

Your network contains an Active Directory Domain Services (AD DS) domain named contoso.com.

You need to identify which server is the PDC emulator for the domain.

Solution: From Active Directory Sites and Services, you right-click Default-First-Site-Name in the console tree, and then select Properties. Does this meet the goal?

A. Yes

B. No

Correct Answer: B

Section:

QUESTION 24

Note: This question is part of a series of questions that present the same scenario. Each question in the series contains a unique solution that might meet the stated goals. Some question sets might have more than one correct solution, while others might not have a correct solution.

After you answer a question in this section, you will NOT be able to return to it. As a result, these questions will not appear in the review screen. Your network contains an Active Directory Domain Services (AD DS) domain named contoso.com.

You need to identify which server is the PDC emulator for the domain.

Solution: From Active Directory Domains and Trusts, you right-click Active Directory Domains and Trusts in the console tree, and then select Operations Master. Does this meet the goal?

A. Yes

B. No

Correct Answer: B

Section:

QUESTION 25

You have an on premises Active Directory Domain Services (AD DS) domain that syncs with an Azure Active Directory (Azure AD) tenant. You plan to implement self-service password reset (SSPR) in Azure AD.

You need to ensure that users that reset their passwords by using SSPR can use the new password resources in the AD DS domain. What should you do?

A. Deploy the Azure AD Password Protection proxy service to the on premises network.

B. Run the Microsoft Azure Active Directory Connect wizard and select Password writeback.



- C. Grant the Change password permission for the domain to the Azure AD Connect service account.
- D. Grant the impersonate a client after authentication user right to the Azure AD Connect service account.

Correct Answer: B

Section:

Explanation:

Reference:

<https://docs.microsoft.com/en-us/azure/active-directory/authentication/tutorial-enable-ssprwriteback>

QUESTION 26

Note: This question is part of a series of questions that present the same scenario. Each question in the series contains a unique solution that might meet the stated goals. Some question sets might have more than one correct solution, while others might not have a correct solution.

After you answer a question in this section, you will NOT be able to return to it. As a result, these questions will not appear in the review screen. You are planning the deployment of DNS to a new network.

You have three internal DNS servers as shown in the following table.

| Name | Location | IP address | Local DNS zone |
|---------|----------|------------|--------------------|
| Server1 | Montreal | 10.0.1.10 | contoso.local |
| Server2 | Toronto | 10.0.2.10 | east.contoso.local |
| Server3 | Seattle | 10.0.3.10 | west.contoso.local |

The contoso.local zone contains zone delegations for east.contoso.local and west.contoso.local. All the DNS servers use root hints. You need to ensure that all the DNS servers can resolve the names of all the internal namespaces and internet hosts. Solution: On Server2, you create a conditional forwarder for contoso.local and west.contoso.local. On Server3, you create a conditional forwarder for contoso.local and east.contoso.local. Does this meet the goal?

- A. Yes
- B. No

Correct Answer: B

Section:

Explanation:



QUESTION 27

You have a server that runs Windows Server and contains a shared folder named UserData.

You need to limit the amount of storage space that each user can consume in UserData.

What should you use?

- A. Storage Spaces
- B. Work Folders
- C. Distributed File System (DFS) Namespaces
- D. File Server Resource Manager (FSRM)

Correct Answer: D

Section:

Explanation:

Reference:

<https://docs.microsoft.com/en-us/windows-server/storage/fsrm/fsrm-overview>

QUESTION 28

Your network contains an Active Directory Domain Services (AD DS) domain named contoso.com.

The domain contains two servers named Server1 and Server2.

Server1 contains a disk named Disk2. Disk2 contains a folder named UserDat a. UserData is shared to the Domain Users group. Disk2 is configured for deduplication. Server1 is protected by using Azure Backup. Server1 fails.
You connect Disk2 to Server2.
You need to ensure that you can access all the files on Disk2 as quickly as possible.
What should you do?

- A. Create a storage pool.
- B. Restore files from Azure Backup.
- C. Install the File Server Resource Manager server role.
- D. Install the Data Deduplication server role.

Correct Answer: D

Section:

Explanation:

Reference:

<https://docs.microsoft.com/en-us/windows-server/storage/data-deduplication/overview>

QUESTION 29

Note: This question is part of a series of questions that present the same scenario. Each question in the series contains a unique solution that might meet the stated goals. Some question sets might have more than one correct solution, while others might not have a correct solution.

After you answer a question in this section, you will NOT be able to return to it. As a result, these questions will not appear in the review screen. Your network contains an Active Directory Domain Services (AD DS) forest. The forest contains three Active Directory sites named Site1, Site2, and Site3. Each site contains two domain controllers. The sites are connected by using DEFAULTSITELINK.

You open a new branch office that contains only client computers.

You need to ensure that the client computers in the new office are primarily authenticated by the domain controllers in Site1. Solution: You create a new site named Site4 and associate Site4 to DEFAULTSITELINK.

Does this meet the goal?

- A. Yes
- B. No

Correct Answer: B

Section:

QUESTION 30

Note: This question is part of a series of questions that present the same scenario. Each question in the series contains a unique solution that might meet the stated goals. Some question sets might have more than one correct solution, while others might not have a correct solution.

After you answer a question in this section, you will NOT be able to return to it. As a result, these questions will not appear in the review screen. You are planning the deployment of DNS to a new network.

You have three internal DNS servers as shown in the following table.

| Name | Location | IP address | Local DNS zone |
|---------|----------|------------|--------------------|
| Server1 | Montreal | 10.0.1.10 | contoso.local |
| Server2 | Toronto | 10.0.2.10 | east.contoso.local |
| Server3 | Seattle | 10.0.3.10 | west.contoso.local |

The contoso.local zone contains zone delegations for east.contoso.local and west.contoso.local. All the DNS servers use root hints. You need to ensure that all the DNS servers can resolve the names of all the internal namespaces and internet hosts. Solution: On Server2, you create a conditional forwarder for west.contoso.local. On Server3, you create a conditional forwarder for east.contoso.local. Does this meet the goal?

- A. Yes
- B. No

Correct Answer: B

Section:

QUESTION 31

HOTSPOT

You have a Windows Server container host named Server1 and an Azure subscription.

You deploy an Azure container registry named Registry1 to the subscription.

On Server1, you create a container image named image1.

You need to store imager in Registry1.

Which command should you run on Server1 ? To answer, select the appropriate options in the answer area. NOTE: Each correct selection is worth one point.

Hot Area:



Answer Area:



Section:

Explanation:

<https://docs.microsoft.com/en-us/azure/container-registry/container-registry-get-started-dockercli?tabs=azure-cli#push-the-image-to-your-registry>

QUESTION 32

HOTSPOT

You plan to deploy an Azure virtual machine that will run Windows Server.

You need to ensure that an Azure Active Directory (Azure AD) user named user1@contoso.com can connect to the virtual machine by using the Azure Serial Console. What should you do? To answer, select the appropriate options in the answer area.

NOTE: Each correct selection is worth one point.

Hot Area:



Answer Area:

Answer Area

Configure on the Azure virtual machine:

- Boot diagnostics with a custom storage account
- Operating system guest diagnostics
- A system-assigned managed identity

Assign the following role to User1:

- Virtual Machine Contributor
- Virtual Machine Administrator Login
- Virtual Machine User Login

Section:

Explanation:

Answer Area

Configure on the Azure virtual machine:

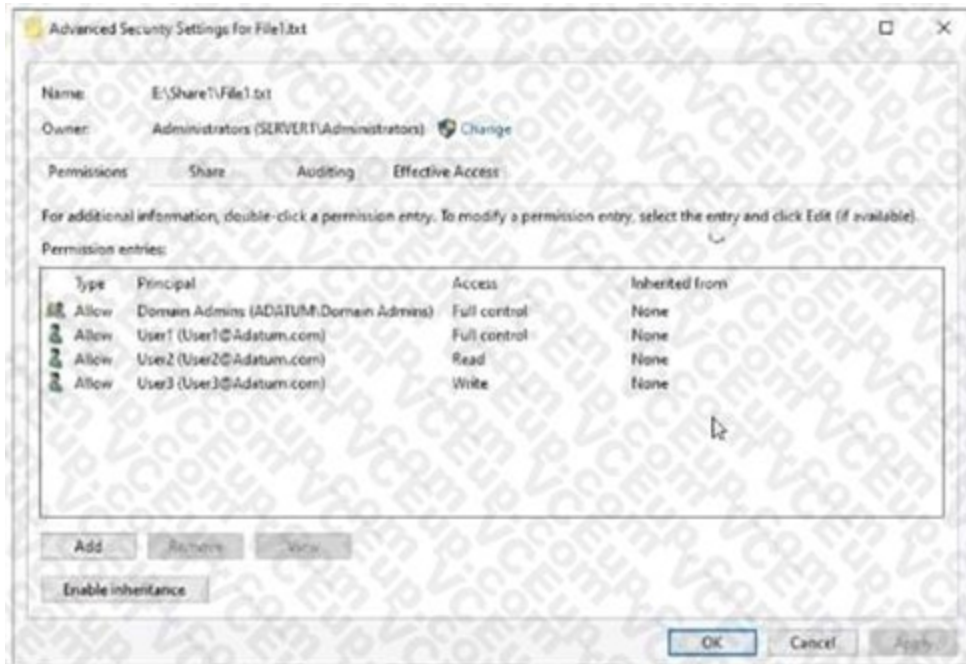
Assign the following role to User1:

QUESTION 33

HOTSPOT

Your network contains an Active Directory Domain Services (AD DS) domain named adatum.com.





The domain contains a server named Server1 and three users named User1, User2, and User3. Server1 contains a shared folder named Share1 that has the following configurations:

```

ShareState      : Online
AvailabilityType : NonClustered
FolderEnumerationMode : AccessBased
CachingMode     : Manual
LeasingMode     : Full
SmbInstance    : Default
CompressData    : False
ContinuouslyAvailable : False
EncryptData    : False
Name           : Share1
Path           : E:\Share1
ShadowCopy     : False
  
```



The share permissions for Share1 are configured as shown in the Share Permissions exhibit. (Click the Share Permissions tab.) Share1 contains a file named File1.txt. The advanced security settings for File1.txt are configured as shown in the File Permissions exhibit. (Click the File Permissions tab.) For each of the following statements, select Yes if the statement is true. Otherwise, select No.

NOTE: Each correct selection is worth one point.

Hot Area:

Answer Area

| Statements | Yes | No |
|---|----------------------------------|----------------------------------|
| When User1 connects to \\Server1.adatum.com\Share1, the user can take ownership of File1.txt. | <input type="radio"/> | <input checked="" type="radio"/> |
| When User2 connects to \\Server1.adatum.com\Share1, File1.txt is visible. | <input checked="" type="radio"/> | <input type="radio"/> |
| When User3 connects to \\Server1.adatum.com\Share1, File1.txt is visible. | <input checked="" type="radio"/> | <input type="radio"/> |

Answer Area:

Answer Area

Statements

| | | |
|--|--------------------------------------|-------------------------------------|
| When User1 connects to \\Server1.adatum.com\Share1\, the user can take ownership of File1.txt. | Yes <input type="radio"/> | No <input checked="" type="radio"/> |
| When User2 connects to \\Server1.adatum.com\Share1\, File1.txt is visible. | Yes <input checked="" type="radio"/> | No <input type="radio"/> |
| When User3 connects to \\Server1.adatum.com\Share1\, File1.txt is visible. | Yes <input checked="" type="radio"/> | No <input type="radio"/> |

Section:

Explanation:

QUESTION 34

HOTSPOT

Your network contains an Active Directory Domain Services (AD DS) domain named adatum.com. The domain contains a server named Server1 and the users shown in the following table.

| Name | Member of |
|-------|-----------|
| User1 | Group1 |
| User2 | Group2 |
| User3 | Group3 |

Server1 contains a folder named D:\Folder1. The advanced security settings for Folder 1 are configured as shown in the Permissions exhibit. (Click the Permissions tab.)

| Type | Principal | Access | Inherited from | Applies to |
|-------|---|--------------|----------------|-----------------------------------|
| Allow | Administrators (SERVER1\Administrators) | Full control | None | This folder, subfolders and files |
| Allow | Group1 (ADATUM\Group1) | Read | None | This folder, subfolders and files |
| Allow | Group2 (ADATUM\Group2) | Write | None | This folder, subfolders and files |

vdumps

Folder1 is shared by using the following configurations

| Group | Permission |
|--------|----------------------|
| Group1 | Allow - Change |
| Group3 | Allow - Full Control |


```

Path       : D:\Folder1
Name       : Share1
ShareType  : FileSystemDirectory
FolderEnumerationMode : Unrestricted
  
```

Hot Area:

Answer Area

| Statements | Yes | No |
|---|-----------------------|-----------------------|
| User1 can read the files in Share1. | <input type="radio"/> | <input type="radio"/> |
| User3 can delete files in Share1. | <input type="radio"/> | <input type="radio"/> |
| If User2 connects to \\Server1.adatum.com from File Explorer. | <input type="radio"/> | <input type="radio"/> |

Answer Area:

Answer Area

| Statements | Yes | No |
|---|----------------------------------|----------------------------------|
| User1 can read the files in Share1. | <input checked="" type="radio"/> | <input type="radio"/> |
| User3 can delete files in Share1. | <input type="radio"/> | <input checked="" type="radio"/> |
| If User2 connects to \\Server1.adatum.com from File Explorer. | <input checked="" type="radio"/> | <input type="radio"/> |

Section:

Explanation:

QUESTION 35

HOTSPOT

You need to sync files from an on-premises server named Server1 to Azure by using Azure File Sync. You have a cloud tiering policy that is configured for 30 percent free space and 70 days. Volume f on Server1 is 500 GB. A year ago, you configured E:\Data on Server1 to sync by using Azure File Sync. The files that are visible in E:\Data are shown in the following table.

| Name | Size | Last accessed |
|-------|--------|---------------|
| File1 | 200 GB | 2 days ago |
| File2 | 100 GB | 10 days ago |
| File3 | 200 GB | 60 days ago |
| File4 | 50 GB | 100 days ago |

Volume E does NOT contain any other files.

Where are File1 and file3 located? To answer, select the appropriate options in the answer area.

Hot Area:

Answer Area

File1:

| |
|----------------------------------|
| Server1 only |
| The Azure file share only |
| Server1 and the Azure file share |

File3:

| |
|-----------------------------------|
| Server1 only |
| The Azure file share only |
| Server 1 and the Azure file share |

Answer Area:

Answer Area

File1:

| |
|----------------------------------|
| Server1 only |
| The Azure file share only |
| Server1 and the Azure file share |

File3:

| |
|-----------------------------------|
| Server1 only |
| The Azure file share only |
| Server 1 and the Azure file share |

Section:

Explanation:

QUESTION 36

HOTSPOT

You have a file server named Server1 that runs Windows Server and contains the volumes shown in the following table.



| Name | File system |
|------|-------------|
| C | NTFS |
| D | NTFS |
| E | REFS |

On which volumes can you use BitLocker Drive Encryption (BitLocker) and disk quotas? To answer select the appropriate options in the answer area. NOTE Each correct selection is worth one point.

Hot Area:

Answer Area

BitLocker:

| |
|--------------|
| C only |
| D only |
| C and D only |
| D and E only |
| C, D, and E |

Disk quotas:

| |
|--------------|
| C only |
| D only |
| C and D only |
| D and E only |
| C, D, and E |

Answer Area:



Section:

Explanation:

BitLocker:

| |
|--------------|
| C only |
| D only |
| C and D only |
| D and E only |
| C, D, and E |

Disk quotas:

| |
|--------------|
| C only |
| D only |
| C and D only |
| D and E only |
| C, D, and E |



QUESTION 37

HOTSPOT

Your network contains an Active Directory Domain Services (AD DS) domain named contoso.com. The domain contains a server named Server1 that has the DFS Namespaces role service installed. Server1 hosts a domain-based Distributed File System (DFS) Namespace named Files. The domain contains a file server named Server2. Server2 contains a shared folder named Share1. Share1 contains a subfolder named Folder 1.

In the Files namespace, you create a folder named Folder1 that has a target of \\Server2.contoso.com\Share1\Folder1. You need to configure a logon script that will map drive letter M to Folder1. The solution must use the path of the DFS Namespace. How should you complete the command to map the drive letter? To answer, select the appropriate options in the answer area. NOTE: Each correct selection is worth one point.

Hot Area:

Answer Area

net use m:

| |
|-----------------------|
| \\contoso.com |
| \\files.contoso.com |
| \\Server1.contoso.com |
| \\Server2.contoso.com |

| |
|----------------------|
| files\folder1 |
| files\share1\folder1 |
| folder1 |
| share1\folder1 |

Answer Area:

Answer Area

net use m:

| |
|-----------------------|
| \\contoso.com |
| \\files.contoso.com |
| \\Server1.contoso.com |
| \\Server2.contoso.com |

| |
|----------------------|
| files\folder1 |
| files\share1\folder1 |
| folder1 |
| share1\folder1 |

Section:

Explanation:

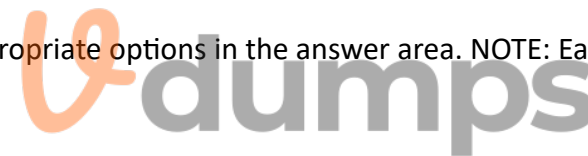
QUESTION 38

HOTSPOT

You have 10 on-premises servers that run Windows Server.

You plan to use Azure Network Adapter to connect the servers to the resources in Azure.

Which prerequisites do you require on-premises and in Azure? To answer, select the appropriate options in the answer area. NOTE: Each correct selection is worth one point.



Hot Area:

To configure the on-premises servers, use:

| |
|---------------------------|
| Azure CLI |
| Routing and Remote Access |
| Server Manager |
| Windows Admin Center |

To connect the Azure resources and Azure Network Server Manager Adapter, use:

| |
|----------------------------------|
| Azure Bastion |
| Azure Firewall |
| An Azure virtual network gateway |
| A private endpoint |
| A public Azure Load Balancer |

Answer Area:

To configure the on-premises servers, use:

| |
|---------------------------|
| Azure CLI |
| Routing and Remote Access |
| Server Manager |
| Windows Admin Center |

To connect the Azure resources and Azure Network Server Manager Adapter, use:

| |
|----------------------------------|
| Azure Bastion |
| Azure Firewall |
| An Azure virtual network gateway |
| A private endpoint |
| A public Azure Load Balancer |

Section:

Explanation:

Reference:

<https://docs.microsoft.com/en-us/windows-server/manage/windows-admin-center/azure/useazure-network-adapter>

QUESTION 39

DRAG DROP

You have a server named Server1 that has Windows Admin Center installed. The certificate used by Windows Admin Center was obtained from a certification authority (CA). The certificate expires. You need to replace the certificate.

Which three actions should you perform in sequence? To answer, move the appropriate actions from the list of actions to the answer area and arrange them in the correct order.

Select and Place:

Actions

Answer Area

Copy the certificate thumbprint.

From Internet Information Services (IIS) Manager, bind a certificate.

Rerun **Windows Admin Center Setup** and select **Change**.



Rerun **Windows Admin Center Setup** and select **Repair**.

Rerun **Windows Admin Center Setup** and select **Remove**.



Correct Answer:



| Actions | Answer Area |
|--|--|
| | From Internet Information Services (IIS) Manager, bind a certificate. |
| | Copy the certificate thumbprint. |
| |  Rerun Windows Admin Center Setup and select Change . |
| Rerun Windows Admin Center Setup and select Repair . |  |
| Rerun Windows Admin Center Setup and select Remove . | |



Section:
Explanation:
Reference:
<https://www.starwindsoftware.com/blog/change-the-windows-admin-center-certificate>

QUESTION 40
HOTSPOT
You have an on-premises server named Server1 that runs Windows Server and has internet connectivity. You have an Azure subscription. You need to monitor Server1 by using Azure Monitor. Which resources should you create in the subscription, and what should you install on Server1? To answer, select the appropriate options in the answer area. NOTE: Each correct selection is worth one point.

Hot Area:

In the subscription, create:

- | |
|--|
| An Azure Files storage account |
| A Log Analytics workspace |
| An Azure SQL database and a data collection rule |
| An Azure Blob Storage account and a data collection rule |

On Server1, install:

- | |
|---|
| The Azure Monitor agent |
| The Analytics gateway |
| The Device Health Attestation server role |

Answer Area:

In the subscription, create:

- | |
|--|
| An Azure Files storage account |
| A Log Analytics workspace |
| An Azure SQL database and a data collection rule |
| An Azure Blob Storage account and a data collection rule |

On Server1, install:

- | |
|---|
| The Azure Monitor agent |
| The Analytics gateway |
| The Device Health Attestation server role |

Section:

Explanation:

Reference:

<https://docs.microsoft.com/en-us/windows-server/manage/windows-admin-center/azure/azuremonitor>

QUESTION 41

HOTSPOT

You have a Windows Server container host named Server1 that has a single disk.

On Server1, you plan to start the containers shown in the following table.

| Name | Description |
|------------|---|
| Container1 | Container1 is a Windows container that contains a web app in development. The container must NOT share a kernel with other containers. |
| Container2 | Container2 is a Linux container that runs a web app. The container requires two static IP addresses. |
| Container3 | Container3 is a Windows container that runs a database. The container requires a static IP address. |

Which isolation mode can you use for each container? To answer, select the appropriate options in the answer area. NOTE: Each correct selection is worth one point.

Hot Area:

Container1:

| |
|---|
| <input type="checkbox"/> |
| <input type="checkbox"/> Hyper-V isolation only |
| <input type="checkbox"/> Process isolation only |
| <input type="checkbox"/> Hyper-V isolation or process isolation |

Container2:

| |
|---|
| <input type="checkbox"/> |
| <input type="checkbox"/> Hyper-V isolation only |
| <input type="checkbox"/> Process isolation only |
| <input type="checkbox"/> Hyper-V isolation or process isolation |

Container3:

| |
|---|
| <input type="checkbox"/> |
| <input type="checkbox"/> Hyper-V isolation only |
| <input type="checkbox"/> Process isolation only |
| <input type="checkbox"/> Hyper-V isolation or process isolation |

Answer Area:

| | |
|-------------|--|
| Container1: | |
| | Hyper-V isolation only |
| | Process isolation only |
| | Hyper-V isolation or process isolation |
| Container2: | |
| | Hyper-V isolation only |
| | Process isolation only |
| | Hyper-V isolation or process isolation |
| Container3: | |
| | Hyper-V isolation only |
| | Process isolation only |
| | Hyper-V isolation or process isolation |



Section:

Explanation:

Reference:

<https://docs.microsoft.com/en-us/virtualization/windowscontainers/manage-containers/hypervcontainer>

QUESTION 42

DRAG DROP

You have a server named Server1 that runs Windows Server and has the Hyper V server role installed. Server1 hosts a virtual machine named VM1. Server1 has an NVMe storage device. The device is currently assigned to VM1 by using Discrete Device Assignment. You need to make the device available to Server1.

Which four actions should you perform in sequence? To answer, move the appropriate actions from the list of actions to the answer area and arrange them in the correct order.

Select and Place:

| Actions | Answer Area |
|--|-------------|
| From Server1, stop VM1. | |
| From Server1, run the Remove-VMAssignableDevice cmdlet. | |
| From Server1, run the Mount-VMHostAssignableDevice cmdlet. | |
| From Server1, enable the device by using Device Manager. | |
| From VM1, disable the device by using Device Manager. | |

Correct Answer:

| Actions | Answer Area |
|---|--|
| | From Server1, stop VM1. |
| | From Server1, run the Remove-VMAssignableDevice cmdlet. |
| | From Server1, run the Mount-VMHostAssignableDevice cmdlet. |
| | From Server1, enable the device by using Device Manager. |
| From VM1, disable the device by using Device Manager. | |

Section:

Explanation:

Reference:

<https://docs.microsoft.com/en-us/windows-server/virtualization/hyper-v/deploy/deploying-storage-devices-using-dda>

QUESTION 43

HOTSPOT

You have on-premises file servers that run Windows Server as shown in the following table.

| Name | Relevant folder |
|---------|------------------------|
| Server1 | D:\Folder1, E:\Folder2 |
| Server2 | D:\Data |

You have the Azure file shares shown in the following table.

| Name | Location |
|--------|----------|
| share1 | East US |
| share2 | East US |

You add a Storage Sync Service named Sync1 and an Azure File Sync sync group named Group1.

Group1 uses share1 as a cloud endpoint.

You register Server1 and Server2 with Sync1. You add D:\Folder1 from Server1 as a server endpoint in Group1. For each of the following statements, select Yes if the statement is true. Otherwise, select No.

NOTE: Each correct selection is worth one point.

Hot Area:

| Statements | Yes | No |
|--|--------------------------|--------------------------|
| You can create a file named File2.docx in D:\Folder1 on Server1. | <input type="checkbox"/> | <input type="checkbox"/> |
| You can create a file named File1.docx in D:\Data1 on Server2. | <input type="checkbox"/> | <input type="checkbox"/> |
| File3.docx will sync to Server1. | <input type="checkbox"/> | <input type="checkbox"/> |

Answer Area:

| Statements | Yes | No |
|--|----------------------------------|----------------------------------|
| You can create a file named File2.docx in D:\Folder1 on Server1. | <input type="radio"/> | <input checked="" type="radio"/> |
| You can create a file named File1.docx in D:\Data1 on Server2. | <input checked="" type="radio"/> | <input type="radio"/> |
| File3.docx will sync to Server1. | <input checked="" type="radio"/> | <input type="radio"/> |

Section:

Explanation:

Reference:

<https://docs.microsoft.com/en-us/azure/storage/file-sync/file-sync-planning>

QUESTION 44

HOTSPOT

You need to sync files from an on premises server named Server1 to Azure by using Azure File Sync.

You have a cloud tiering policy that is configured for 30 percent free space and 70 days.

Volume E on Server1 is 500 GB.

A year ago, you configured E:\Data on Server1 to sync by using Azure File Sync. The files that are visible in E:\Data are shown in the following table.



| Name | Size | Last accessed |
|-------|--------|---------------|
| File1 | 200 GB | 2 days ago |
| File2 | 100 GB | 10 days ago |
| File3 | 200 GB | 60 days ago |
| File4 | 50 GB | 100 days ago |

Volume E does NOT contain any other files.

Where are File1 and File3 located? To answer, select the appropriate options in the answer area.

NOTE: Each correct selection is worth one point.

Hot Area:

File1:

| |
|----------------------------------|
| Server1 only |
| The Azure file share only |
| Server1 and the Azure file share |

File3:

| |
|----------------------------------|
| Server1 only |
| The Azure file share only |
| Server1 and the Azure file share |

Answer Area:

File1:

| |
|----------------------------------|
| Server1 only |
| The Azure file share only |
| Server1 and the Azure file share |

File3:

| |
|----------------------------------|
| Server1 only |
| The Azure file share only |
| Server1 and the Azure file share |



Section:

Explanation:

QUESTION 45

HOTSPOT

You have on-premises servers that run Windows Server as shown in the following table.

| Name | Local content |
|---------|-----------------------|
| Server1 | D:\Folder1\File1.docx |
| Server2 | D:\Data1\File3.docx |

You have an Azure file share named share1 that stores two files named File2.docx and File3.docx.

You create an Azure File Sync sync group that includes the following endpoints: share D:\Folder1 on Server1 D:\Data1 on Server2 For each of the following statements, select Yes if the statement is true. Otherwise, select No. NOTE: Each correct selection is worth one point.

Hot Area:

| Statements | Yes | No |
|--|--------------------------|--------------------------|
| You can create a file named File2.docx in D:\Folder1 on Server1. | <input type="checkbox"/> | <input type="checkbox"/> |
| You can create a file named File1.docx in D:\Data1 on Server2. | <input type="checkbox"/> | <input type="checkbox"/> |
| File3.docx will sync to Server1. | <input type="checkbox"/> | <input type="checkbox"/> |

Answer Area:

| Statements | Yes | No |
|--|-------------------------------------|-------------------------------------|
| You can create a file named File2.docx in D:\Folder1 on Server1. | <input checked="" type="checkbox"/> | <input type="checkbox"/> |
| You can create a file named File1.docx in D:\Data1 on Server2. | <input checked="" type="checkbox"/> | <input type="checkbox"/> |
| File3.docx will sync to Server1. | <input type="checkbox"/> | <input checked="" type="checkbox"/> |

Section:

Explanation:

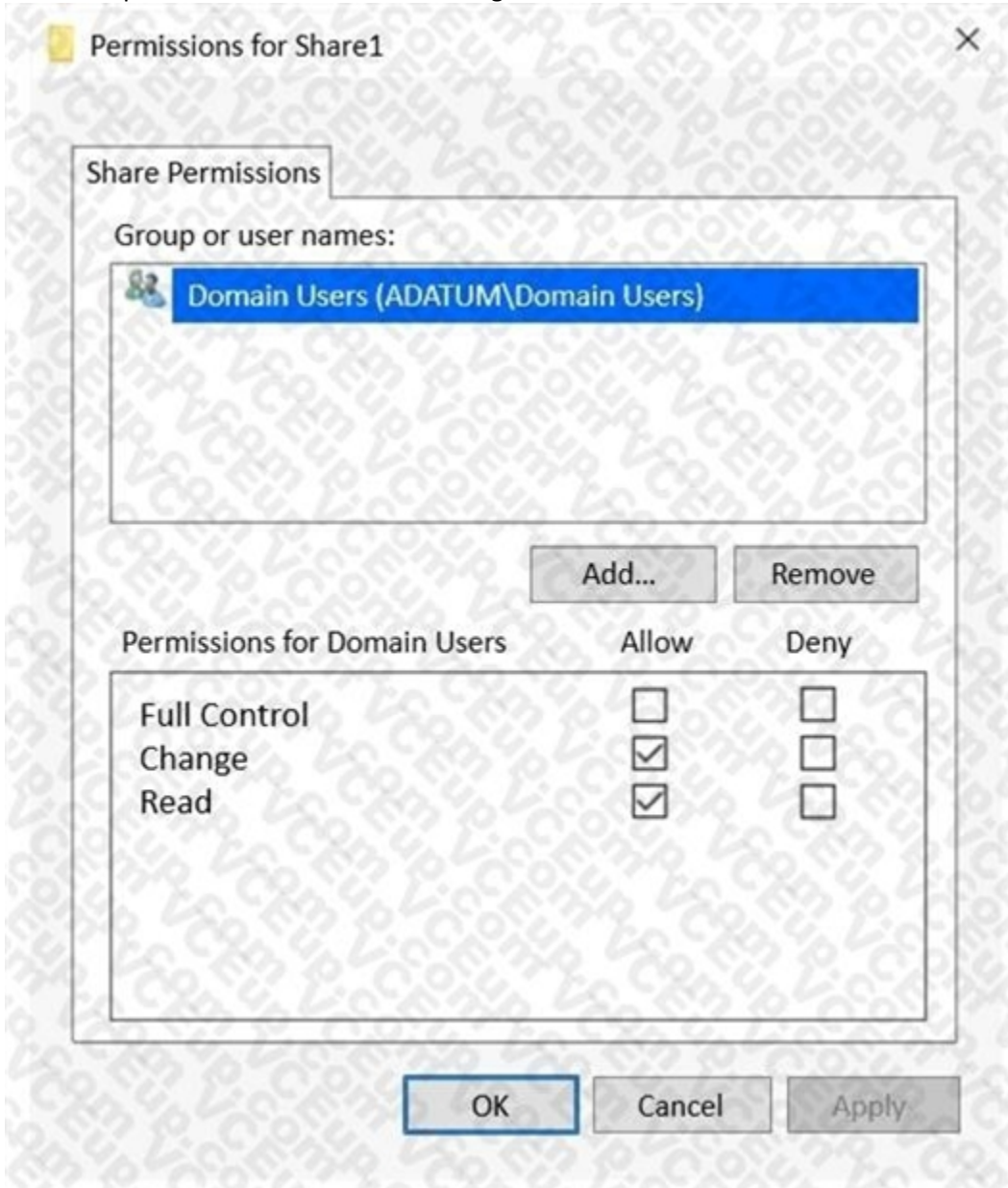
QUESTION 46

HOTSPOT

Your network contains an Active Directory Domain Services (AD DS) domain named adatum.com. The domain contains a file server named Server1 and three users named User1, User2, and User3. Server1 contains a shared folder named Share1 that has the following configurations:

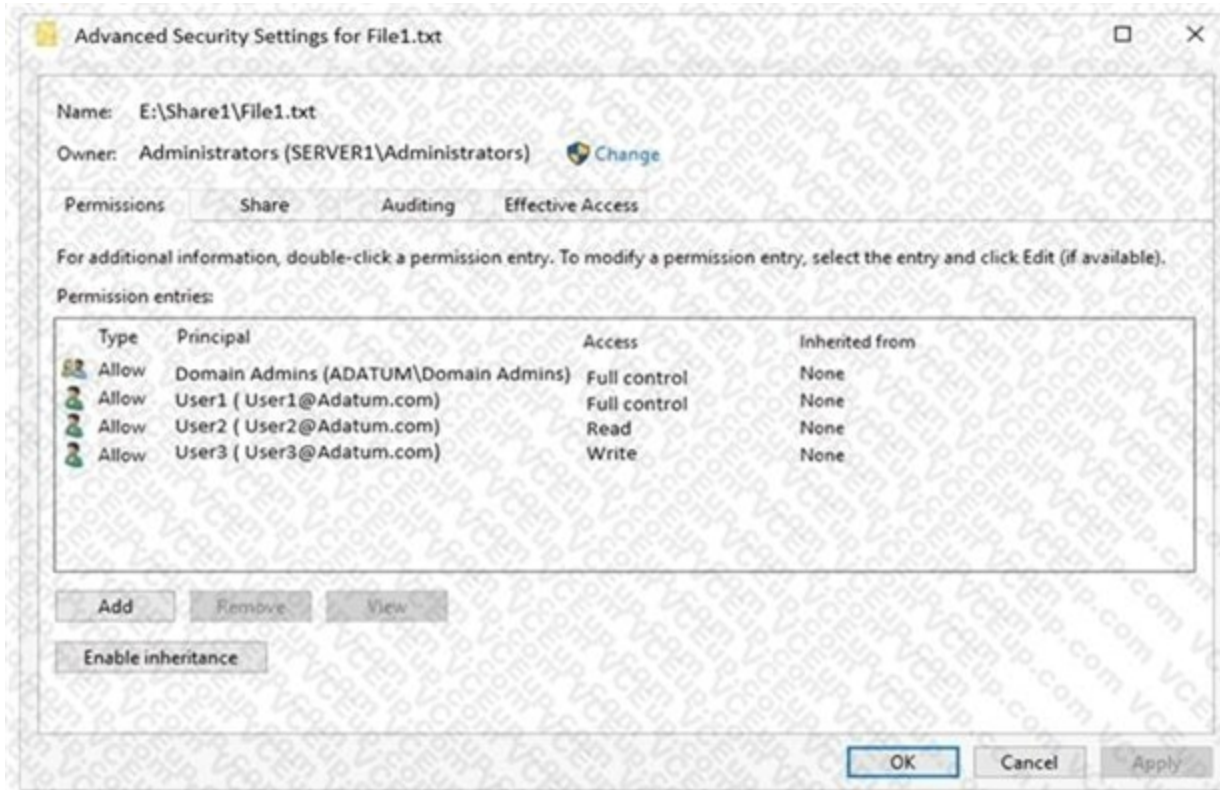

```
ShareState      : Online
AvailabilityType : NonClustered
FolderEnumerationMode : AccessBased
CachingMode     : Manual
LeasingMode     : Full
SmbInstance    : Default
CompressData    : False
ContinuouslyAvailable : False
EncryptData    : False
Name           : Share1
Path          : E:\Share1
ShadowCopy     : False
```

The share permissions for Share1 are configured as shown in the Share Permissions exhibit.



Share1 contains a file named File1.txt. The advanced security settings for File1.txt are configured as shown in the File Permissions exhibit.





For each of the following statements, select Yes if the statement is true. Otherwise, select No.
 NOTE: Each correct selection is worth one point.

Hot Area:



Statements

When User1 connects to \\Server1.adatum.com\Share1\, the user can take ownership of File1.txt.

Yes No

When User2 connects to \\Server1.adatum.com\Share1\, File1.txt is visible.

Yes No

When User3 connects to \\Server1.adatum.com\Share1\, File1.txt is visible.

Yes No

Answer Area:

| Statements | Yes | No |
|--|----------------------------------|----------------------------------|
| When User1 connects to \\Server1.adatum.com\Share1\, the user can take ownership of File1.txt. | <input type="radio"/> | <input checked="" type="radio"/> |
| When User2 connects to \\Server1.adatum.com\Share1\, File1.txt is visible. | <input checked="" type="radio"/> | <input type="radio"/> |
| When User3 connects to \\Server1.adatum.com\Share1\, File1.txt is visible. | <input checked="" type="radio"/> | <input type="radio"/> |

Section:

Explanation:

QUESTION 47

DRAG DROP

You have a server named Server1.

You plan to use Storage Spaces to expand the storage available to Server1. You attach eight physical disks to Server1. Four disks are HDDs and four are SSDs. You need to create a volume on Server1 that will use the storage on all the new disks. The solution must provide the fastest read performance for frequently used files. Which three actions should you perform in sequence? To answer, move the appropriate actions from the list of actions to the answer area and arrange them in the correct order.

Select and Place:

Actions

- Create a virtual disk.
- Convert each new disk into a dynamic disk.
- Create a storage pool.
- Create a spanned volume.
- Convert each new disk into a GPT disk.
- Create a simple volume.

Answer Area

➤

➤



Correct Answer:

| Actions | Answer Area |
|--|------------------------|
| | |
| Convert each new disk into a dynamic disk. | Create a storage pool. |
| | Create a virtual disk. |
| Create a spanned volume. | Create a simple volume |
| Convert each new disk into a GPT disk. | |
| | |



Section:

Explanation:

Reference:

<https://redmondmag.com/articles/2018/07/31/storage-spaces-windows-server-2016-1.aspx>

<https://redmondmag.com/articles/2018/08/02/storage-spaces-windows-server-2016-2.aspx>



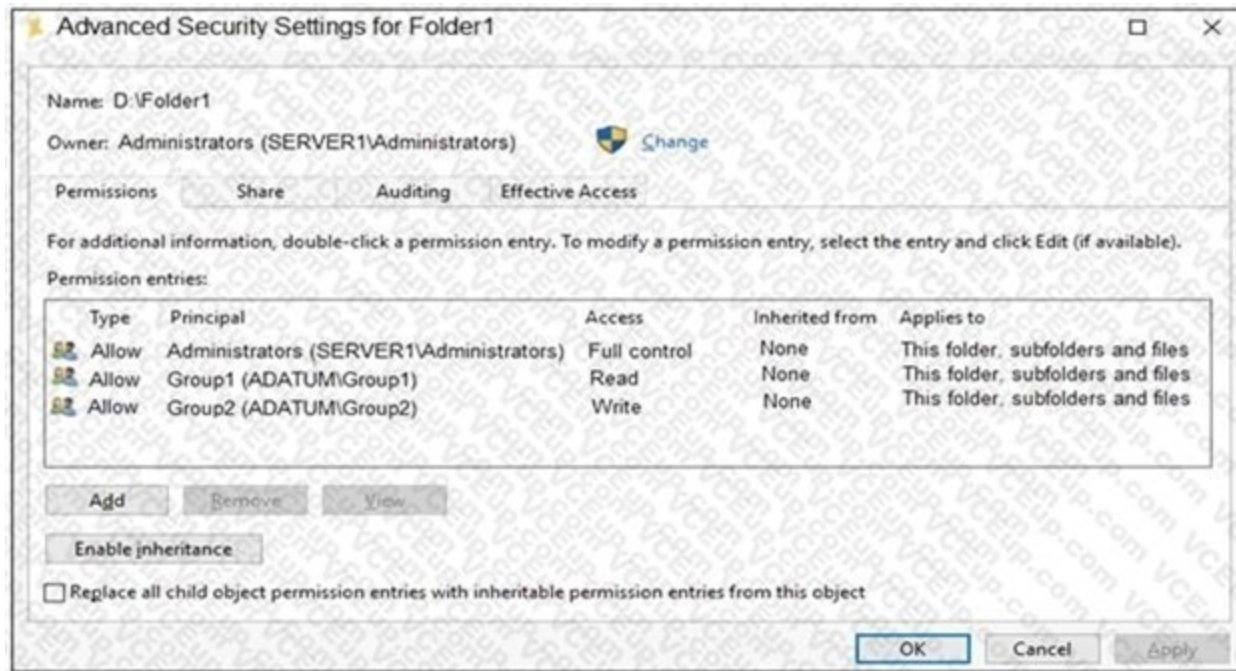
QUESTION 48

HOTSPOT

Your network contains an Active Directory Domain Services (AD DS) domain named adatum.com. The domain contains a server named Server1 and the users shown in the following table.

| Name | Member of |
|-------|-----------|
| User1 | Group1 |
| User2 | Group2 |
| User3 | Group3 |

Server1 contains a folder named D:\Folder1. The advanced security settings for Folder1 are configured as shown in the Permissions exhibit. (Click the Permissions tab.)



Folder1 is shared by using the following configurations:

```
Path           : D:\Folder1
Name           : Share1
ShareType      : FileSystemDirectory
FolderEnumerationMode : Unrestricted
```

The share permissions for Share1 are shown in the following table.

| Group | Permission |
|--------|----------------------|
| Group1 | Allow – Change |
| Group3 | Allow – Full Control |



For each of the following statements, select Yes if the statement is true. Otherwise, select No.

NOTE: Each correct selection is worth one point.

Hot Area:

| Statements | Yes | No |
|--|-----------------------|-----------------------|
| User1 can read the files in Share1. | <input type="radio"/> | <input type="radio"/> |
| User3 can delete files in Share1. | <input type="radio"/> | <input type="radio"/> |
| If User2 connects to \\Server1.adatum.com from File Explorer, Share1 will be listed. | <input type="radio"/> | <input type="radio"/> |

Answer Area:

| Statements | Yes | No |
|--|----------------------------------|----------------------------------|
| User1 can read the files in Share1. | <input checked="" type="radio"/> | <input type="radio"/> |
| User3 can delete files in Share1. | <input type="radio"/> | <input checked="" type="radio"/> |
| If User2 connects to \\Server1.adatum.com from File Explorer, Share1 will be listed. | <input checked="" type="radio"/> | <input type="radio"/> |

Section:

Explanation:

Box 1: Yes

Group1 has Read access to Folder1 and Change access to Share1. Therefore, User1 can read the files in Share1. Box 2: No

Group3 has Full Control access to Share1. However, Group3 has no permissions configured Folder1.

Therefore, User3 cannot access the files in Share1.

Box 3: Yes

Group2 has write permission to Folder1. However, Group2 has no permission on Share1. Therefore, users in Group2 cannot access files in the shared folder. Access Based Enumeration when enabled hides files and folders that users do not have permission to access. However, Access Based Enumeration is not enabled on Share1. This is indicated by the FolderEnumerationMode – Unrestricted setting. Therefore, the share will be visible to User2 even though User2 cannot access the shared folder.

QUESTION 49

HOTSPOT

You have an onpremises DNS server named Server1 that runs Windows Server. Server 1 hosts a DNS zone named fabrikam.com You have an Azure subscription that contains the resources shown in the following table.



| Name | Type | Description |
|-------------|------------------|--|
| Vnet1 | Virtual network | Connects to the on-premises network by using a Site-to-Site VPN |
| VM1 | Virtual machine | Runs Windows Server and has the DNS Server role installed |
| contoso.com | Private DNS zone | Linked to Vnet1 |
| contoso.com | Public DNS zone | Contains the DNS records of all the platform as a service (PaaS) resources |

You need to design a solution that will automatically resolve the names of any PaaS resources for which you configure private endpoints in Vnet1.

How should you configure the name resolution? To answer, select the appropriate options in the answer area.

NOTE: Each correct selection is worth one point.

Hot Area:

Answer Area

On Vnet1:

- Configure VM1 to forward requests for the contoso.com zone to the public DNS zone.
- Configure Vnet1 to use a custom DNS server that is set to the Azure-provided DNS at 168.63.129.16.
- Configure VM1 to forward requests for the contoso.com zone to the Azure-provided DNS at 168.63.129.16.

On the on-premises network:

- Configure forwarding for the contoso.com zone to VM1.
- Configure forwarding for the contoso.com zone to the public DNS zone.
- Configure forwarding for the contoso.com zone to the Azure-provided DNS at 168.63.129.16.

Answer Area:

Answer Area

On Vnet1:

- Configure VM1 to forward requests for the contoso.com zone to the public DNS zone.
- Configure Vnet1 to use a custom DNS server that is set to the Azure-provided DNS at 168.63.129.16.
- Configure VM1 to forward requests for the contoso.com zone to the Azure-provided DNS at 168.63.129.16.

On the on-premises network:

- Configure forwarding for the contoso.com zone to VM1.
- Configure forwarding for the contoso.com zone to the public DNS zone.
- Configure forwarding for the contoso.com zone to the Azure-provided DNS at 168.63.129.16.

Section:

Explanation:



QUESTION 50

Your network contains an on-premises Active Directory Domain Services (AD DS) domain named contoso.com. The domain contains three servers that run Windows Server and have the Hyper-V server role installed. Each server has a Switch Embedded Teaming (SET) team.

You need to verify that Remote Direct Memory Access (RDMA) and required Windows Server settings are configured properly on each server to support a failover cluster.

What should you use?

- A. the validate-DCB cmdlet
- B. Server Manager
- C. the Get-NetAdapter cmdlet
- D. Failover Cluster Manager

Correct Answer: A

Section:

QUESTION 51

Your network contains an Active Directory Domain Services (AD DS) domain.

You plan to use Active Directory Administrative Center to create a new user named User1.

Which two attributes are required to create User1? Each correct answer presents part of the solution.

NOTE: Each correct selection is worth one point.

- A. Password
- B. Profile path

- C. User SamAccountName logon
- D. Full name
- E. First name
- F. User UPN logon

Correct Answer: A, C

Section:

QUESTION 52

HOTSPOT

Your on-premises network contains an Active Directory Domain Services (AD DS) domain. The domain contains the servers shown in the following table.

The domain controllers do NOT have internet connectivity.

You plan to implement Azure AD Password Protection for the domain.

You need to deploy Azure AD Password Protection agents. The solution must meet the following requirements:

* All Azure AD Password Protection policies must be enforced.

* Agent updates must be applied automatically.

* Administrative effort must be minimized.

What should you do? To answer select the appropriate options in the answer area.

NOTE: Each correct selection is worth one point.

Hot Area:

Answer Area

Install the Azure AD Password Protection agent on:

| |
|-------------------------|
| DC1 and DC2 only |
| DC1 only |
| DC1 and DC2 only |
| DC1, DC2, and RODC1 |

Install the Azure AD Password Protection Proxy on:

| |
|----------------|
| Server1 |
| DC1 |
| DC2 |
| RODC1 |
| Server1 |
| Server2 |

Answer Area:

Answer Area

Install the Azure AD Password Protection agent on:

DC1 and DC2 only
DC1 only
DC1 and DC2 only
DC1, DC2, and RODC1

Install the Azure AD Password Protection Proxy on:

Server1
DC1
DC2
RODC1
Server1
Server2

Section:

Explanation:

QUESTION 53

You have an Active Directory Domain Services (AD DS) domain. The domain contains a member server named Server1 that runs Windows Server. You need to ensure that you can manage password policies for the domain from Server1. Which command should you run first on Server1?

- A. Install-Windows Feature RSAT-AO-PowerShell
- B. Install-Windows Feature 6PHC
- C. Install-Windows Feature RSAT-AD-Tool\$
- D. Install-windows Feature RSAT-AWIMS

Correct Answer: C

Section:

QUESTION 54

Your network contains an Active Directory forest. The forest contains two domains named contoso.com and east.contoso.com and the servers shown in the following table.

| Name | Domain | Configuration |
|---------|------------------|-------------------|
| DC1 | contoso.com | Domain controller |
| Server1 | contoso.com | Member server |
| DC2 | east.contoso.com | Domain controller |
| Server2 | east.contoso.com | Member server |

Contoso.com contains a user named User1.

You add User1 to the built-in Backup Operators group in contoso.com.

Which servers can User1 back up?

- A. DC1 only
- B. Server1 only



- C. DC1 and DC2 only
- D. DC1 and Server1 only
- E. DC1, DC2, Server1, and Server2

Correct Answer: A

Section:

QUESTION 55

Your network contains a DHCP server.

You plan to add a new subnet and deploy Windows Server to the subnet.

You need to use the server as a DHCP relay agent.

Which role should you install on the server?

- A. Network Policy and Access Services
- B. Remote Access
- C. Network Controller
- D. DHCP Server

Correct Answer: B

Section:

QUESTION 56

You have an on-premises server named Server1 that runs Windows Server.

You have an Azure subscription that contains a virtual network named VNet1.

You need to connect Server1 to VNet1 by using Azure Network Adapter.

What should you use?

- A. Azure AD Connect
- B. Device Manager
- C. the Azure portal
- D. Windows Admin Center

Correct Answer: D

Section:

QUESTION 57

You have an Azure virtual machine named VM1 that runs Windows Server.

You need to ensure that administrators request access to VM1 before establishing a Remote Desktop connection.

What should you configure?

- A. Azure Front Door
- B. Microsoft Defender for Cloud
- C. Azure AD Privileged Identity Management (PIM)
- D. a network security group (NSG)

Correct Answer: B

Section:



QUESTION 58

DRAG DROP

You have an on-premises server named Server 1 that runs Windows Server. Server 1 contains a file share named Share 1.

You have an Azure subscription.

You perform the following actions:

- * Deploy Azure File Sync
- * Install the Azure File Sync agent on Server1.
- * Register Server1 with Azure File Sync

You need to ensure that you can add Share1 as an Azure File Sync server endpoint.

Which three actions should you perform in sequence? To answer, move the appropriate actions from the list of actions to the answer area and arrange them in the correct order.

Select and Place:

| Actions | Answer Area |
|---|-------------|
| Deploy the Azure Connected Machine agent. | |
| Deploy an Azure VPN gateway. | |
| Create a private endpoint. | |
| Create an Azure Storage account. | |
| Create an Azure file share. | |
| Create a sync group. | |

Correct Answer:

| Actions | Answer Area |
|---|----------------------------------|
| Deploy the Azure Connected Machine agent. | Create an Azure Storage account. |
| Deploy an Azure VPN gateway. | Create an Azure file share. |
| Create a private endpoint. | Create a sync group. |
| | |
| | |
| | |

Section:

Explanation:

Create an Azure Storage account.

Create an Azure file share.

Create a sync group.

QUESTION 59

HOTSPOT

You have an Active Directory Domain Services (AD DS) domain that contains the member servers shown in the following table.

| Name | Operating system | Data Deduplication role service |
|---------|---------------------|---------------------------------|
| Server1 | Windows Server 2019 | Installed |
| Server2 | Windows Server 2022 | Not installed |
| Server3 | Windows Server 2022 | Installed |

Server3 contains a data disk named Disk1 that has Data Deduplication installed. Disk1 contains the files shown in the following table.

| Name | Size |
|------------|--------|
| File1.txt | 5 KB |
| File2.docx | 800 KB |
| File3.sys | 2 MB |
| File4.bmp | 5 GB |

Server3 fails.

You need to recover the files on Disk1.

Which files can you recover if you attach Disk1 to Server 1, and which files can you recover if you attach Disk1 to Server2? To answer, select the appropriate options in the answer area.

NOTE: Each correct selection is worth one point.

Hot Area:

Answer Area



Server1:


- File1.txt only
- File1.txt and File2.docx only
- File1.txt and File3.sys only
- File1.txt, File2.docx, File3.sys, and File4.bmp
- No files can be recovered.


Server2:

- File1.txt only
- File1.txt and File2.docx only
- File1.txt and File3.sys only
- File1.txt, File2.docx, File3.sys, and File4.bmp
- No files can be recovered.

Answer Area:

Answer Area

Server1: 
File1.txt only
File1.txt and File2.docx only
File1.txt and File3.sys only
File1.txt, File2.docx, File3.sys, and File4.bmp
No files can be recovered.

Server2: 
File1.txt only
File1.txt and File2.docx only
File1.txt and File3.sys only
File1.txt, File2.docx, File3.sys, and File4.bmp
No files can be recovered.

Section:

Explanation:

QUESTION 60

DRAG DROP

You have a disaggregated cluster deployment. The deployment contains a scale-out file server (SOFS) cluster that runs Windows Server and a compute cluster that has the Hyper-V role enabled.

You need to implement Storage Quality of Service (QoS). The solution must ensure that you can control the bandwidth usage between the SOFS cluster and the Hyper-V cluster.

Which cmdlet should you run on each cluster? To answer, drag the appropriate cmdlets to the correct clusters. Each cmdlet may be used once, more than once, or not at all. You may need to drag the split bar between panes or scroll to view content.

NOTE: Each correct selection is worth one point.

Cmdlets

Answer Area

SOFS:

Hyper-V:

Answer:

Cmdlets

New-StorageQosPolicy

Set-VMHardDiskDrive

Set-VMsan

Answer Area

SOFS:

Hyper-V:

Select and Place:

Cmdlets

New-StorageQosPolicy

Set-VMHardDiskDrive

Set-VMsan

Answer Area

SOFS:

Hyper-V:

Correct Answer:

Cmdlets

Set-VMsan

Answer Area



SOFS:

Hyper-V:

Section:

Explanation:

QUESTION 61

You have a server named Server1 that runs Windows Server and contains a file share named Share1.

You need to prevent users from stoning MP4 files in Share1. The solution must ensure that the users can store other types of files in the share.

What should you configure on Server1?

- A. File Management Tasks
- B. NTFS Quotas
- C. NTFS permissions
- D. file screens

Correct Answer: D

Section:

QUESTION 62

You have an Azure subscription that contains the storage accounts shown in the following table.

| Name | Location | File share | Blob container |
|----------|------------|------------|----------------|
| storage1 | West US | share1 | None |
| storage2 | West US | share2 | container2 |
| storage3 | Central US | share3 | None |
| storage4 | Central US | share4 | container4 |

In the West US Azure region, you create a storage sync service named SyncA.

You plan to create a sync group named GroupA.

What is the maximum number of cloud endpoints you can use with GroupA?

- A. 1
- B. 2
- C. 3
- D. 4

Correct Answer: B

Section:

QUESTION 63

Your network contains an Active Directory Domain Services (AD DS) domain. The domain contains the offices shown in the following table.

| Location | Number of VPN servers | Number of remote users |
|----------|-----------------------|------------------------|
| Boston | 2 | 30 |
| Dallas | 2 | 50 |
| Seattle | 4 | 100 |

You need to deploy a Network Policy Server (NPS) named NPS1 to enforce network access policies for all remote connections.

What is the minimum number of RADIUS clients that you should add to NPS1?

- A. 1
- B. 3
- C. 8
- D. 180
- E. 188

Correct Answer: B

Section:

QUESTION 64

SIMULATION LAB 12

You need to create a Group Policy Object (GPO) named GPO1 that only applies to a group named MemberServers.

- A. See the solution of this Task below

Correct Answer: A

Section:

Explanation:

To create a GPO named GPO1 that only applies to a group named MemberServers, you can follow these steps:

On a domain controller or a computer that has the Remote Server Administration Tools (RSAT) installed, open Group Policy Management from the Administrative Tools menu or by typing `gpmc.msc` in the Run box.

In the left pane, expand your domain and right-click on Group Policy Objects. Select **New** to create a new GPO.

In the **New GPO** dialog box, enter `GPO1` as the Name of the new GPO and click **OK**. You can also optionally select a source GPO to copy the settings from.

Right-click on the new GPO and select **Edit** to open the Group Policy Management Editor. Here, you can configure the settings that you want to apply to the group under the **Computer Configuration** and **User Configuration** nodes.

For more information on how to edit a GPO, see [Edit a Group Policy Object](#).

Close the Group Policy Management Editor and return to the Group Policy Management console. Right-click on the new GPO and select **Scope**. Here, you can specify the scope of management for the GPO, such as the links, security filtering, and WMI filtering.

Under the **Security Filtering** section, click on **Authenticated Users** and then click on **Remove**. This will remove the default permission granted to all authenticated users and computers to apply the GPO.

Click on **Add** and then type the name of the group that you want to apply the GPO to, such as `MemberServers`. Click **OK** to add the group to the security filter. You can also click on **Advanced** to browse the list of groups available in the domain.

Optionally, you can also configure the **WMI Filtering** section to further filter the GPO based on the Windows Management Instrumentation (WMI) queries. For more information on how to use WMI filtering, see [Filter the scope of a GPO by using WMI filters](#).

To link the GPO to an organizational unit (OU) or a domain, right-click on the OU or the domain in the left pane and select **Link an Existing GPO**. Select the GPO that you created, such as `GPO1`, and click **OK**. You can also change the order of preference by using the **Move Up** and **Move Down** buttons.

Wait for the changes to replicate to other domain controllers. You can also force the update of the GPO by using the `gpupdate /force` command on the domain controller or the client computers. For more information on how to update a GPO, see [Update a Group Policy Object](#).

Now, you have created a GPO named `GPO1` that only applies to a group named `MemberServers`. You can verify the GPO application by using the `gpresult /r` command on a member server and checking the **Applied Group Policy Objects** entry. You can also use the **Group Policy Results** wizard in the Group Policy Management console to generate a report of the GPO application for a specific computer or user. For more information on how to use the Group Policy Results wizard, see [Use the Group Policy Results Wizard](#).

QUESTION 65

You have an Active Directory Domain Services (AD DS) domain that contains the domain controllers shown in the following table.

| Name | Operations master role |
|------|--------------------------|
| DC1 | Schema master |
| DC2 | Infrastructure master |
| DC3 | Domain naming master |
| DC4 | PDC emulator, RID master |

The domain contains an app named `App1` that uses a custom application partition to store configuration data.

You decommission `App1`.

When you attempt to remove the custom application partition, the process fails.

Which domain controller is unavailable?

- A. DC1
- B. DC2
- C. DC3
- D. DC4

Correct Answer: C

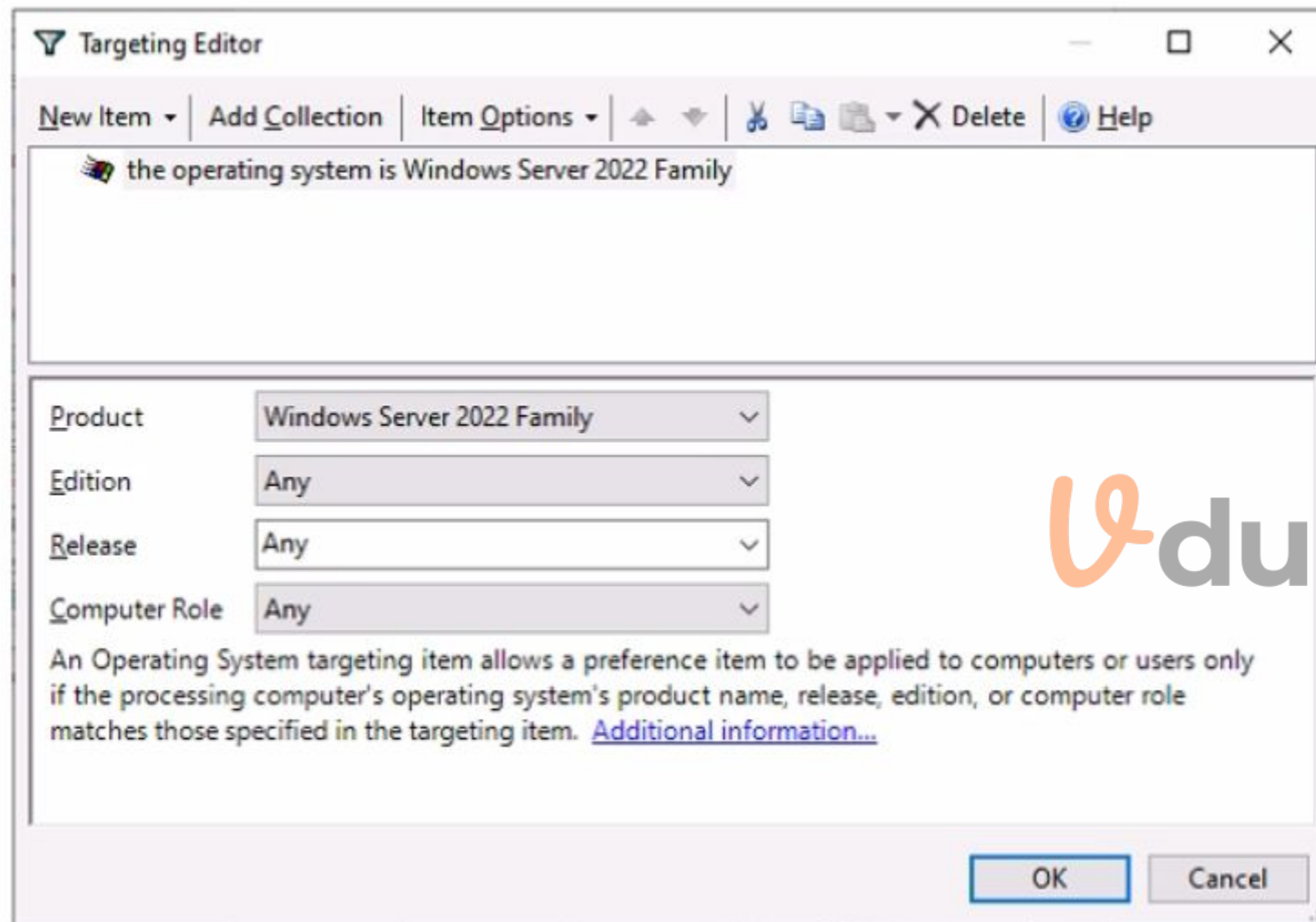
Section:

QUESTION 66

Your network contains an Active Directory domain named `contoso.com`. The domain contains the computers shown in the following table.

| Name | Operating system |
|-----------|---------------------|
| Computer1 | Windows 11 |
| Server1 | Windows Server 2016 |
| Server2 | Windows Server 2019 |
| Server3 | Windows Server 2022 |

On Server3, you create a Group Policy Object (GPO) named GP01 and link GPOI to contoso.com. GP01 includes a shortcut preference named Shortcut1 that has item-level targeting configured as shown in the following exhibit.



To which computer will Shortcut1 be applied?

- A. Server3 only
- B. Computer1 and Server3 only
- C. Server2 and Server3 only
- D. Server1, Server2, and Server3 only

Correct Answer: A

Section:

QUESTION 67

You have an on-premises Active Directory Domain Services (AD DS) domain that syncs with a Microsoft Entra tenant.

You deploy an app that adds custom attributes to the domain.
From Azure Cloud Shell, you discover that you cannot query the custom attributes of users.
You need to ensure that the custom attributes are available in Microsoft Entra ID.
Which task should you perform from Microsoft Entra Connect first?

- A. Refresh directory schema
- B. Configure device options
- C. Customize synchronization options
- D. Manage federation

Correct Answer: C

Section:

QUESTION 68

You have four testing devices that are configured with static IP addresses as shown in the following table.

| Name | IP address |
|-------------|----------------|
| TestDevice1 | 192.168.16.242 |
| TestDevice2 | 192.168.16.243 |
| TestDevice3 | 192.168.16.244 |
| TestDevice4 | 192.168.16.245 |

The test devices are turned on once a month.

You need to prevent Server1 from assigning the IP addresses allocated to the test devices to other devices when the test devices are offline. The solution must minimize administrative effort.
What should you do?

- A. Create an exclusion range.
- B. Create reservations.
- C. Configure the Scope options.
- D. Create a policy.

Correct Answer: B

Section:

QUESTION 69

HOTSPOT

You have an Azure subscription and a computer named Computed that runs Windows 11.

From the Azure portal, you deploy a virtual machine named VM1 that runs Windows Server. You configure VM1 to use the default settings.

You need to ensure that you can connect to VM1 by using PowerShell remoting.

Which cmdlet should you run, and what should you use to run the cmdlet? To answer, select the appropriate options in the answer area.

NOTE: Each correct selection is worth one point.

Hot Area:

Answer Area

Run from:
A PowerShell session on Computer1
A PowerShell session on VM1
Azure Cloud Shell

Cmdlet:
Enable-AzVMPSRemoting
Enable-PSRemoting -Force
Enable-PSSessionConfiguration

Answer Area:

Answer Area

Run from:
A PowerShell session on Computer1
A PowerShell session on VM1
Azure Cloud Shell

Cmdlet:
Enable-AzVMPSRemoting
Enable-PSRemoting -Force
Enable-PSSessionConfiguration

Section:

Explanation:

QUESTION 70

You have an Azure subscription. The subscription contains a virtual machine named VM1 that runs Windows Server. You plan to manage VM1 by using a PowerShell runbook. You need to create the runbook. What should you create first?

- A. an Azure workbook
- B. a Microsoft Power Automate flow
- C. a Log Analytics workspace
- D. an Azure Automation account

Correct Answer: D

Section:

QUESTION 71

HOTSPOT

Your on-premises network contains an Active Directory Domain Services (AD DS) domain. You plan to sync the domain with a Microsoft Entra tenant by using Microsoft Entra Connect cloud sync. You need to meet the following requirements:

* Install the software required to sync the domain and Microsoft Entra ID.

* Enable password hash synchronization.

What should you install, and what should you use to enable password hash synchronization? To answer, select the appropriate options in the answer area.

Hot Area:


Answer Area

Install:
Active Directory Administrative Center
Microsoft Entra Connect
The AD FS Management console
The Microsoft Entra Connect provisioning agent

Use:
Active Directory Administrative Center
Microsoft Entra Connect
The AD FS Management console
The Azure portal

Answer Area:

Answer Area



Install:
Active Directory Administrative Center
Microsoft Entra Connect
The AD FS Management console
The Microsoft Entra Connect provisioning agent

Use:
Active Directory Administrative Center
Microsoft Entra Connect
The AD FS Management console
The Azure portal

Section:

Explanation:

QUESTION 72

HOTSPOT

Your network contains an Active Directory Domain Services (AD DS) domain named contoso.com. The domain contains the users shown in the following table.

| Name | Located in |
|-------|-----------------|
| User1 | Contoso\Users |
| User2 | Contoso\OU1 |
| User3 | Contoso\OU1\OU2 |

The domain has the Group Policy Objects (GPOs) shown in the following table.

| Name | Linked to | Enforcement |
|------|-------------|---------------------------------------|
| GPO1 | Contoso.com | Enforce is enabled for the GPO link. |
| GPO2 | OU1 | <i>None</i> |
| GPO3 | OU2 | Block inheritance is enabled for OU2. |

The GPOs are configured to map a drive named H as shown in the following table.

| Name | Configuration |
|------|----------------------------------|
| GPO1 | Drive H maps to \\server1\share. |
| GPO2 | Drive H maps to \\server2\share. |
| GPO3 | Drive H maps to \\server3\share. |

For each of the following statements, select Yes if the statement is true. Otherwise, select No.

NOTE: Each correct selection is worth one point.

Hot Area:

Answer Area



| Statements | Yes | No |
|---|-----------------------|-----------------------|
| For User1, \\server2\share maps to drive H. | <input type="radio"/> | <input type="radio"/> |
| For User2 \\server1\share maps to drive H. | <input type="radio"/> | <input type="radio"/> |
| For User3, \\server3\share maps to drive H. | <input type="radio"/> | <input type="radio"/> |

Answer Area:

Answer Area

| Statements | Yes | No |
|---|----------------------------------|----------------------------------|
| For User1, \\server2\share maps to drive H. | <input type="radio"/> | <input checked="" type="radio"/> |
| For User2 \\server1\share maps to drive H. | <input checked="" type="radio"/> | <input type="radio"/> |
| For User3, \\server3\share maps to drive H. | <input checked="" type="radio"/> | <input type="radio"/> |

Section:

Explanation:

QUESTION 73

You have an Azure subscription that contains the virtual networks shown in the following table.

| Name | Subnet | Location |
|-------|--------------------|------------|
| VNet1 | Subnet11, Subnet12 | West US |
| VNet2 | Subnet21 | West US |
| VNet3 | Subnet31 | Central US |

You deploy a virtual machine named VM1 that runs Windows Server. VM1 is connected to Subnet11.

You plan to add an additional network interface named NIC1 to VM1.

To which subnets can NIC1 be attached?

- A. Subnet11 only
- B. Subnet12 only
- C. Subnet11 and Subnet12only
- D. Subnet12 and Subnet21 only
- E. Subnet11, Subnet12, Subnet21f and Subnet31

Correct Answer: B

Section:

QUESTION 74

Task 3

You need to run a container that uses the mcr.microsoft.com/windows/servercore/iis image on SRV1. Port 60 on the container must be published to port 5001 on SRV1 and the container must run in the background.

- A. See the solution of this Task below

Correct Answer: A

Section:

Explanation:

To run a container on SRV1 using the mcr.microsoft.com/windows/servercore/iis image, publish port 60 on the container to port 5001 on SRV1, and ensure it runs in the background, you can follow these steps:

Step 1: Pull the IIS Image First, pull the IIS image from the Microsoft Container Registry:

```
docker pull mcr.microsoft.com/windows/servercore/iis
```

Step 2: Run the Container Next, run the container with the required port mapping and ensure it runs in the background using the -d flag:

```
docker run -d -p 5001:60 --name iis_container mcr.microsoft.com/windows/servercore/iis
```

This command will start a container named iis_container using the IIS image, map port 60 inside the container to port 5001 on SRV1, and run the container in detached mode.

Step 3: Verify the Container is Running To verify that the container is running and the port is published, use the following command:

```
docker ps
```

This will list all running containers and show the port mappings.

Step 4: Access the IIS Server You can now access the IIS server running in the container by navigating to http://<SRV1_IP>:5001 in a web browser, where <SRV1_IP> is the IP address of SRV1.

Note: Ensure that Docker is installed on SRV1 and that the port 5001 is open on the firewall to allow incoming connections1.

By following these steps, you should be able to run the IIS container on SRV1 with the specified port mapping and have it running in the background.

QUESTION 75

Task 4

You need to run a container that uses the mcr.microsoft.com/windows/servercore/iis image on SRV1. Port 80 on the container must be published to port 5001 on SRV1 and the container must run in the background

A. See the solution of this Task below

Correct Answer: A

Section:

Explanation:

To run a container on SRV1 using the mcr.microsoft.com/windows/servercore/iis image, publish port 80 on the container to port 5001 on SRV1, and ensure it runs in the background, you can follow these steps:

Step 1: Pull the IIS Image First, pull the correct IIS image from the Microsoft Container Registry:

```
docker pull mcr.microsoft.com/windows/servercore/iis
```

Step 2: Run the Container Next, run the container with the required port mapping and ensure it runs in the background using the -d flag:

```
docker run -d -p 5001:80 --name iis_container mcr.microsoft.com/windows/servercore/iis
```

This command will start a container named iis_container using the IIS image, map port 80 inside the container to port 5001 on SRV1, and run the container in detached mode.

Step 3: Verify the Container is Running To verify that the container is running and the port is published, use the following command:

```
docker ps
```

This will list all running containers and show the port mappings.

Step 4: Access the IIS Server You can now access the IIS server running in the container by navigating to http://<SRV1_IP>:5001 in a web browser, where <SRV1_IP> is the IP address of SRV1.

Note: Ensure that Docker is installed on SRV1 and that the port 5001 is open on the firewall to allow incoming connections1.

By following these steps, you should be able to run the IIS container on SRV1 with the specified port mapping and have it running in the background. Please replace mcr.microsoft.com/windows/servercore/iis with the correct image name mcr.microsoft.com/windows/servercore/iis as shown in the commands above.

QUESTION 76

Task 5

You have an application that is copied to a folder named C:\app on SRV1. C:\app also contains also a Dockerfile for the app.

On SRV1. you need to create a container image for the application by using the Dockerfile. The container image must be named app1.

A. See the solution of this Task below

Correct Answer: A

Section:

Explanation:



Explore

To create a container image named app1 for your application using the Dockerfile in the C:\app directory on SRV1, follow these steps:

Step 1: Open PowerShell or Command Prompt First, open PowerShell or Command Prompt on SRV1.

Step 2: Navigate to the Application Directory Change to the directory where your application and Dockerfile are located:

```
cd C:\app
```

Step 3: Build the Container Image Use the docker build command to create the container image. The -t flag tags the image with the name app1:

```
docker build -t app1 .
```

The period . at the end of the command tells Docker to use the Dockerfile in the current directory.

Step 4: Verify the Image Creation After the build process completes, verify that the image app1 has been created successfully by listing all images:

```
docker images
```

You should see app1 in the list of images.

Step 5: Use the Image Now, you can use the image app1 to run containers or push it to a container registry if needed.

By following these steps, you'll have created a Docker container image named app1 using the Dockerfile located in C:\app on SRV1. Ensure that Docker is installed on SRV1 and that you have the necessary permissions to execute these commands.

