

Microsoft.AZ-800 .vJul-2024.by.Liono.126q

Number: AZ-800
Passing Score: 800
Time Limit: 120
File Version: 19.0

Exam Code: AZ-800
Exam Name: Administering Windows Server Hybrid Core Infrastructure



Case 01

Contoso Ltd

This is a case study. Case studies are not timed separately. You can use as much exam time as you would like to complete each case. However, there may be additional case studies and sections on this exam. You must manage your time to ensure that you are able to complete all questions included on this exam in the time provided.

To answer the questions included in a case study, you will need to reference information that is provided in the case study. Case studies might contain exhibits and other resources that provide more information about the scenario that is described in the case study. Each question is independent of the other questions in this case study.

At the end of this case study, a review screen will appear. This screen allows you to review your answers and to make changes before you move to the next section of the exam. After you begin a new section, you cannot return to this section.

To start the case study

To display the first question in this case study, click the Next button. Use the buttons in the left pane to explore the content of the case study before you answer the questions. Clicking these buttons displays information such as business requirements, existing environment, and problem statements, if the case study has an All Information tab. Note that the information displayed is identical to the information displayed on the subsequent tabs.

When you are ready to answer a question, click the

Qbutton to return to the question.

AD DS Environment

The network contains an on-premises Active Directory Domain Services (AD DS) forest named contoso.com. The forest contains two domains named contoso.com and canada.contoso.com. The forest contains the domain controllers shown in the following table.

Name	Domain	Active Directory site
DC1	contoso.com	Seattle
DC2	contoso.com	Los Angeles
DC3	canada.contoso.com	Montreal
DC4	contoso.com	Montreal
DC5	canada.contoso.com	Seattle

All the domain controllers are global catalog servers.

Server Infrastructure

The network contains the servers shown in the following table.

Name	Organizational unit (OU)	Server role	Domain	Active Directory site
Server1	Member Servers	None	canada.contoso.com	Montreal
Server2	Member Servers	Hyper-V	canada.contoso.com	Montreal
Server3	Member Servers	None	canada.contoso.com	Montreal

A server named Server4 runs Windows Server and is in a workgroup. Windows Firewall on Server4 uses the private profile.

Server2 hosts three virtual machines named VM1, VM2, and VM3.

VM3 is a file server that stores data in the volumes shown in the following table.

Name	File system
C	NTFS
D	NTFS
E	ReFS
F	ExFAT

Group Policies

The contoso.com domain has the Group Policies Objects (GPOs) shown in the following table.

Name	Minimum password length	Linked to
GPO1	14	OU1
GPO2	8	Member Servers
Default Domain Policy	10	contoso.com



Existing Identities

The forest contains the users shown in the following table.

Name	In OU	Member of
Contoso\Admin1	Contoso\OU1	Contoso\Enterprise Admins
Contoso\Admin2	Contoso\OU1	Contoso\Domain Admins
Canada\Admin3	Canada\OU2	Canada\Domain Admins
Contoso\User1	Contoso\OU3	Contoso\Domain Users

The forest contains the groups shown in the following table.

Name	Domain	Type
Group1	contoso.com	Universal security group
Group2	contoso.com	Global security group
Group3	contoso.com	Domain local security group
Group4	canada.contoso.com	Global distribution group
Group5	canada.contoso.com	Global distribution group
Group6	canada.contoso.com	Domain local distribution group

Current Problems

When an administrator signs in to the console of VM2 by using Virtual Machine Connection, and then disconnects from the session without signing out another administrator can connect to the console session as the currently signed-in user.

Requirements

Contoso identifies the following technical requirements:

- Change the replication schedule for all site links to 30 minutes.
- Promote Server1 to a domain controller in canada.contoso.com.
- Install and authorize Server3 as a DHCP server.
- Ensure that User1 can manage the membership of all the groups in Contoso\OU3.
- Ensure that you can manage Server4 from Server1 by using PowerShell removing.
- Ensure that you can run virtual machines on VM1.
- Force users to provide credentials when they connect to VM2.
- On VM3, ensure that Data Deduplication on all volumes is possible.

QUESTION 1

You need to meet the technical requirements for Server1. Which users can currently perform the required tasks?

- A. Admin1 only
- B. Admin3 only
- C. Admin1 and Admin3 only
- D. Admin1 Admin2. and Admm3

Correct Answer: C

Section:

QUESTION 2

You need to meet the technical requirements for the site links. Which users can perform the required tasks?

- A. Admin1 only
- B. Admin1 and Admin3 only
- C. Admin1 and Admin2 only
- D. Admin3 only
- E. Admin1, Adrrun2. and Admin3

Correct Answer: C

Section:

Explanation:

Membership in the Enterprise Admins group or the Domain Admins group in the forest root domain is required.

QUESTION 3

You need to meet the technical requirements for VM3
On which volumes can you enable Data Deduplication?

- A. D and E only
- B. C, D, E, and F
- C. D only
- D. C and D only
- E. D, E, and F only

Correct Answer: A

Section:

Explanation:

Reference:

<https://docs.microsoft.com/en-us/windows-server/storage/data-deduplication/interop>

QUESTION 4

You need to meet the technical requirements for User1. The solution must use the principle of least privilege. What should you do?

- A. Add Users1 to the Server Operators group in contoso.com.
- B. Create a delegation on contoso.com.
- C. Add Users1 to the Account Operators group in contoso.com.
- D. Create a delegation on OU3.

Correct Answer: D

Section:

Explanation:

Reference:

<https://docs.microsoft.com/en-us/windows-server/identity/ad-ds/plan/delegating-administrationof-account-ous-and-resource-ous>

**QUESTION 5**

You need to meet the technical requirements for VM2.
What should you do?

- A. Implement shielded virtual machines.
- B. Enable the Guest services integration service.
- C. Implement Credential Guard.
- D. Enable enhanced session mode.

Correct Answer: D

Section:

QUESTION 6

HOTSPOT

You need to meet the technical requirements for VM1.

Which cmdlet should you run first? To answer, select the appropriate options in the answer area.

NOTE: Each correct selection is worth one point.

Hot Area:

Answer Area

Set-VM Set-VMBios Set-VMHost Set-VMFirmware Set-VMProcessor	VM1	-NewVMName -GuestControlledCacheTypes -EnableHostResourceProtection -ExposeVirtualizationExtensions	\$true
---	-----	--	--------

Answer Area:

Answer Area

Set-VM Set-VMBios Set-VMHost Set-VMFirmware Set-VMProcessor	VM1	-NewVMName -GuestControlledCacheTypes -EnableHostResourceProtection -ExposeVirtualizationExtensions	\$true
---	-----	--	--------

Section:

Explanation:

QUESTION 7

HOTSPOT

Which groups can you add to Group3 and Group5? To answer, select the appropriate options in the answer area. NOTE: Each correct selection is worth one point.

Hot Area:

Group3:	<input type="checkbox"/> Group6 only <input type="checkbox"/> Group1 and Group2 only <input type="checkbox"/> Group1 and Group4 only <input type="checkbox"/> Group1, Group2, Group4, and Group5 only <input type="checkbox"/> Group1, Group2, Group4, Groups, and Group6
Group5:	<input type="checkbox"/> Group1 only <input type="checkbox"/> Group4 only <input type="checkbox"/> Group6 only <input type="checkbox"/> Group2 and Group4 only <input type="checkbox"/> Group4 and Group6 only

Answer Area:

Group3:
Group6 only
Group1 and Group2 only
Group1 and Group4 only
Group1, Group2, Group4, and Group5 only
Group1, Group2, Group4, Groups, and Group6

Group5:
Group1 only
Group4 only
Group6 only
Group2 and Group4 only
Group4 and Group6 only

Section:

Explanation:

QUESTION 8

HOTSPOT

You need to meet the technical requirements for Server4.

Which cmdlets should you run on Server1 and Server4? To answer, select the appropriate options in the answer area. NOTE: Each correct selection is worth one point.

Hot Area:

Server1:
Enable-PSRemoting
Enable-ServerManagerStandardUserRemoting
Set-Item
Start-Service

Server4:
Enable-PSRemoting
Enable-ServerManagerStandardUserRemoting
Set-Item
Start-Service

Answer Area:

Server1:
Enable-PSRemoting
Enable-ServerManagerStandardUserRemoting
Set-Item
Start-Service

Server4:
Enable-PSRemoting
Enable-ServerManagerStandardUserRemoting
Set-Item
Start-Service

Section:

Explanation:

QUESTION 9

HOTSPOT

For each of the following statements, select Yes if the statement is true. Otherwise, select No.

NOTE: Each correct selection is worth one point.

Hot Area:

Answer Area

Statements

Admin1 must use a password that has at least 14 characters.

Yes

No

User1 must use a password that has at least 10 characters.

If Admin1 creates a new local user on Server1, the password for the new user must be at least eight characters.

Answer Area:

Answer Area

Statements

Admin1 must use a password that has at least 14 characters.

Yes

No

User1 must use a password that has at least 10 characters.

If Admin1 creates a new local user on Server1, the password for the new user must be at least eight characters.

Section:

Explanation:

Exam A

QUESTION 1

HOTSPOT

Your network contains an Active Directory Domain Services (AD DS) forest named contoso.com. The forest contains a child domain named east.contoso.com. In the contoso.com domain, you create two users named Admin1 and Admin2. You need to ensure that the users can perform the following tasks:

- Admin1 can create and manage Active Directory sites.
- Admin2 can deploy domain controller to the easl.conloso.com domain.

The solution must use the principle of least privilege.

To which group should you add each user? To answer, select the appropriate options in the answer area. NOTE Each correct selection is worth one point.

Hot Area:

Answer Area

Admin1:	<input type="checkbox"/> Contoso\Administrators <input type="checkbox"/> Contoso\Domain Admins
Admin2:	<input type="checkbox"/> Contoso\Enterprise Admins <input type="checkbox"/> East\Administrators <input type="checkbox"/> East\Domain Admins
Admin2:	<input type="checkbox"/> Contoso\Administrators <input type="checkbox"/> Contoso\Domain Admins <input type="checkbox"/> Contoso\Enterprise Admins <input type="checkbox"/> East\Administrators <input type="checkbox"/> East\Domain Admins

Answer Area:

Answer Area

Admin1:	<input type="checkbox"/> Contoso\Administrators <input type="checkbox"/> Contoso\Domain Admins
Admin2:	<input checked="" type="checkbox"/> Contoso\Enterprise Admins <input type="checkbox"/> East\Administrators <input type="checkbox"/> East\Domain Admins
Admin2:	<input type="checkbox"/> Contoso\Administrators <input type="checkbox"/> Contoso\Domain Admins <input type="checkbox"/> Contoso\Enterprise Admins <input type="checkbox"/> East\Administrators <input checked="" type="checkbox"/> East\Domain Admins

Section:

Explanation:

QUESTION 2

HOTSPOT

You have an on-premises Active Directory Domain Services (AD DS) domain that syncs with an Azure Active Directory (Azure AD) tenant. You have an on-premises web app named WebApp1 that only supports Kerberos authentication. You need to ensure that users can access WebApp1 by using their Azure AD account. The solution must minimize administrative effort. What should you configure? To answer, select the appropriate options in the answer area.

NOTE: Each correct selection is worth one point.

Hot Area:

Answer Area

In Azure AD:	<input checked="" type="checkbox"/> The Azure AD Application Proxy connector <input type="checkbox"/> The Azure AD Application Proxy service <input type="checkbox"/> Web Application Proxy
On-premises:	<input type="checkbox"/> The Azure AD Application Proxy connector <input checked="" type="checkbox"/> The Azure AD Application Proxy service <input type="checkbox"/> Web Application Proxy

Answer Area:



Section:

Explanation:

<https://docs.microsoft.com/en-us/azure/active-directory/app-proxy/application-proxy-add-onpremises-application>

QUESTION 3

You have an Azure subscription. The subscription contains a virtual machine named VM1 that runs Windows Server.

You build an app named App1.

You need to configure continuous integration and continuous deployment (CI/CD) of App1 to VM1.

What should you create first?

- A. a managed identity
- B. an App Service Environment
- C. an Azure Automation account
- D. an Azure DevOps organization

Correct Answer: D

Section:



QUESTION 4

Your network contains an Active Directory Domain Services (AD DS) domain. The domain contains the resources shown in the following table.

Name	Description
CLIENT1	Client computer that runs Windows
DC1	Domain controller
Server1	File server
Server2	File server

You plan to replicate a volume from Server1 to Server2 by using Storage Replica.

You need to configure Storage Replica.

Where should you install Windows Admin Center?

- A. Server 1
- B. CLIENT1
- C. DC1
- D. Server2

Correct Answer: A

Section:

QUESTION 5

DRAG DROP

You have a server named Server 1 that runs Windows Server and has the Hyper-V server role installed.

Server1 hosts a virtual machine named VM1. Server1 has an NV Me storage device that is assigned to VM1 by using Discrete Device Assignment.

You need to make the device available to the host.

Which four actions should you perform in sequence? To answer, move the appropriate actions from the list of actions to the answer area and arrange them in the correct order.

Select and Place:

Actions	Answer Area
From VM1, disable the device by using Device Manager.	
From Server1, stop VM1.	
From Server1, run the Remove-VMAssignableDevice cmdlet.	
From Server1, run the Mount-VMHostAssignableDevice cmdlet.	
From Server1, enable the device by using Device Manager.	

Correct Answer:

Actions	Answer Area
From VM1, disable the device by using Device Manager.	From Server1, stop VM1.
	From Server1, run the Remove-VMAssignableDevice cmdlet.
	From Server1, run the Mount-VMHostAssignableDevice cmdlet.
	From Server1, enable the device by using Device Manager.

Section:

Explanation:

QUESTION 6

You have an on-premises Active Directory Domain Services (AD DS) domain named contoso.com that syncs with Azure AD by using Azure AD Connect.

You enable password protection for contoso.com.

You need to prevent users from including the word Contoso as part of their password.

What should you use?

- A. the Azure Active Directory admin center
- B. Active Directory Users and Computers
- C. Synchronization Service Manager
- D. Windows Admin Center

Correct Answer: D

Section:

QUESTION 7

HOTSPOT

You have an Active Directory Domain Services (AD DS) domain that contains a group named Group1.

You need to create a group managed service account (gMSA) named Account1. The solution must ensure that Group1 can use Account1. How should you complete the script? To answer, select the appropriate options in the answer area, NOTE: Each correct selection is worth one point.

Hot Area:

Answer Area

New-ADServiceAccount "Account1" -DNSHostName "website.contoso.com" -

- New-ADServiceAccount
- Add-ADComputerServiceAccount
- Install-ADServiceAccount
- New-ADObject
- New-ADServiceAccount

-PrincipalsAllowedToDelegateToAccount "Group1"

- AuthenticationPolicy
- Instance
- PrincipalsAllowedToDelegateToAccount
- PrincipalsAllowedToRetrieveManagedPassword

Answer Area:

Answer Area

New-ADServiceAccount "Account1" -DNSHostName "website.contoso.com" -

- New-ADServiceAccount
- Add-ADComputerServiceAccount
- Install-ADServiceAccount
- New-ADObject
- New-ADServiceAccount

-PrincipalsAllowedToDelegateToAccount "Group1"

- AuthenticationPolicy
- Instance
- PrincipalsAllowedToDelegateToAccount
- PrincipalsAllowedToRetrieveManagedPassword

Section:

Explanation:



QUESTION 8

HOTSPOT

Your network contains two VLANs for client computers and one VLAN for a datacenter. Each VLAN is assigned an IPv4 subnet. Currently, all the client computers use static IP addresses. You plan to deploy a DHCP server to the VLAN in the datacenter.

You need to use the DHCP server to provide IP configurations to all the client computers.

What is the minimum number of scopes and DHCP relays you should create? To answer, select the appropriate options in the answer area. NOTE: Each correct selection is worth one point.

Hot Area:

Answer Area

DHCP scopes:

1
2
3
4

DHCP relays:

1
2
3
4

Use selections for DHCP relays.

Answer Area:



Section:

Explanation:

Box 1: 3

You need a DHCP scope for each of the three subnets.

Box 2: 2

The two client VLANs need a DHCP Relay Agent to forward DHCP requests to the DHCP server. The datacenter VLAN that contains the DHCP server does not require a DHCP Relay Agent.

QUESTION 9

HOTSPOT

Your network contains an Active Directory Domain Services (AD DS) domain named contoso.com.

The domain contains the VPN servers shown in the following table.

Name	IP address
VPN1	172.16.0.254
VPN2	131.10.15.254
VPN3	10.10.0.254



You have a server named NPS1 that has Network Policy Server (NPS) installed. NPS1 has the following RADIUS clients:

```

Name : NPSclient1
Address : 172.16.0.254
AuthAttributeRequired : False
SharedSecret : Pa55w.rd
VendorName : RADIUS Standard
Enabled : False

Name : NPSclient2
Address : 131.10.15.254
AuthAttributeRequired : False
SharedSecret : Pa55w.rd
VendorName : RADIUS Standard
Enabled : True

Name : NPSclient3
Address : 172.16.1.254
AuthAttributeRequired : False
SharedSecret : Pa55w.rd
VendorName : RADIUS Standard
Enabled : True

```

VPN1, VPN2, and VPN3 use NPS1 for RADIUS authentication. All the users in contoso.com are allowed to establish VPN connections. For each of the following statements, select Yes If the statement is true. Otherwise, select No. NOTE: Each correct selection is worth one point.



Hot Area:

Answer Area

Statements	Yes	No
The contoso.com users can authenticate successfully when they establish a VPN connection to VPN1.	<input type="radio"/>	<input type="radio"/>
The contoso.com users can authenticate successfully when they establish a VPN connection to VPN2.	<input type="radio"/>	<input type="radio"/>
The contoso.com users can authenticate successfully when they establish a VPN connection to VPN3.	<input type="radio"/>	<input type="radio"/>

Answer Area:

Answer Area

Statements	Yes	No
The contoso.com users can authenticate successfully when they establish a VPN connection to VPN1.	<input type="radio"/>	<input checked="" type="radio"/>
The contoso.com users can authenticate successfully when they establish a VPN connection to VPN2.	<input checked="" type="radio"/>	<input type="radio"/>
The contoso.com users can authenticate successfully when they establish a VPN connection to VPN3.	<input type="radio"/>	<input checked="" type="radio"/>

Section:

Explanation:

Statements	Yes	No
The contoso.com users can authenticate successfully when they establish a VPN connection to VPN1.	<input type="radio"/>	<input checked="" type="radio"/>
The contoso.com users can authenticate successfully when they establish a VPN connection to VPN2.	<input checked="" type="radio"/>	<input type="radio"/>
The contoso.com users can authenticate successfully when they establish a VPN connection to VPN3.	<input type="radio"/>	<input checked="" type="radio"/>

QUESTION 10

HOTSPOT

You have a server named Server1 that runs Windows Server and has the Hyper-V server role installed. You need to limit which Hyper-V module cmdlets helpdesk users can use when administering Server 1 remotely. You configure Just Enough Administration (JEA) and successfully build the role capabilities and session configuration files. How should you complete the PowerShell command? To answer, select the appropriate options in the answer area. NOTE: Each correct selection is worth one point.

Hot Area:

Answer Area

Answer Area:

Answer Area

Section:

Explanation:

Reference:

<https://docs.microsoft.com/en-us/powershell/scripting/learn/remoting/jea/registerjea?view=powershell-7.2>

QUESTION 11

HOTSPOT

Your network contains two Active Directory Domain Services (AD DS) forests named contoso.com and fabrikam.com. A two-way forest trust exists between the forests. Each forest contains a single domain. The domains contain the servers shown in the following table.

Name	Domain	Description
Server1	contoso.com	Hosts a Windows Admin Center gateway
Server2	fabrikam.com	Hosts resources that will be managed remotely by using Windows Admin Center on Server1

You need to configure resources based constrained delegation so that the users in contoso.com can use Windows Admin Center on Server1 to connect to Server2. How should you complete the command? To answer, select the appropriate options in the answer area.

a. NOTE: Each correct selection is worth one point.

Hot Area:

Answer Area

```
Set-ADComputer -Identity
```

(Get-ADComputer server1.contoso.com)
(Get-ADComputer server2.fabrikam.com)
(Get-ADGroup 'Contoso\Domain Users')
(Get-ADGroup 'Fabrikam\Domain Users')

```
-PrincipalsAllowedToDelegateToAccount
```

(Get-ADComputer server1.contoso.com)
(Get-ADComputer server2.fabrikam.com)
(Get-ADGroup 'Contoso\Domain Users')
(Get-ADGroup 'Fabrikam\Domain Users')

Answer Area:

Answer Area

```
Set-ADComputer -Identity
```

(Get-ADComputer server1.contoso.com)
(Get-ADComputer server2.fabrikam.com)
(Get-ADGroup 'Contoso\Domain Users')
(Get-ADGroup 'Fabrikam\Domain Users')

```
-PrincipalsAllowedToDelegateToAccount
```

(Get-ADComputer server1.contoso.com)
(Get-ADComputer server2.fabrikam.com)
(Get-ADGroup 'Contoso\Domain Users')
(Get-ADGroup 'Fabrikam\Domain Users')

Section:

Explanation:

```
Set-ADComputer -Identity
```

(Get-ADComputer server1.contoso.com)
(Get-ADComputer server2.fabrikam.com)
(Get-ADGroup 'Contoso\Domain Users')
(Get-ADGroup 'Fabrikam\Domain Users')

```
-PrincipalsAllowedToDelegateToAccount
```

(Get-ADComputer server1.contoso.com)
(Get-ADComputer server2.fabrikam.com)
(Get-ADGroup 'Contoso\Domain Users')
(Get-ADGroup 'Fabrikam\Domain Users')

Reference:

<https://docs.microsoft.com/en-us/windows-server/security/kerberos/kerberos-constraineddelegation-overview> <https://docs.microsoft.com/en-us/powershell/module/activedirectory/setadcomputer?view=windowsserver2022-ps>

QUESTION 12

You have a server named Host1 that has the Hyper-V server role installed. Host1 hosts a virtual machine named VM1. You have a management server named Server1 that runs Windows Server. You remotely manage Host1 from Server1 by using Hyper-V Manager. You need to ensure that you can access a USB hard drive connected to Server1 when you connect to VM1 by using Virtual Machine Connection. Which two actions should you perform? Each correct answer presents part of the solution.

NOTE: Each correct selection is worth one point.

- A. From the Hyper-V Settings of Host1, select Allow enhanced session mode

- B. From Disk Management on Host1. attach a virtual hard disk.
- C. From Virtual Machine Connection, switch to a basic session.
- D. From Virtual Machine Connection select Show Options and then select the USB hard drive.
- E. From Disk Management on Host1, select Rescan Disks

Correct Answer: A, D

Section:

Explanation:

Reference:

<https://docs.microsoft.com/en-us/windows-server/virtualization/hyper-v/learn-more/use-localresources-on-hyper-v-virtual-machine-with-vmconnect>

QUESTION 13

Your network contains an on-premises Active Directory Domain Services (AD DS) domain named contoso.com The domain contains three servers that run Windows Server and have the Hyper-V server role installed. Each server has a Switch Embedded Teaming (SET) team You need to verify that Remote Direct Memory Access (RDMA) and all the required Windows Server settings are configured properly on each server. What should you use?

- A. Server Manager
- B. the validate-DCB cmdlet
- C. the Get-NetAdaptor cmdlet
- D. Failover Cluster Manager

Correct Answer: B

Section:

Explanation:

Reference:

<https://github.com/Microsoft/Validate-DCB>



QUESTION 14

You have five file servers that run Windows Server.

You need to block users from uploading video files that have the .mov extension to shared folders on the file servers. All other types of files must be allowed. The solution must minimize administrative effort. What should you create?

- A. a Dynamic Access Control central access policy
- B. a file screen
- C. a Dynamic Access Control central access rule
- D. a data loss prevention (DLP) policy

Correct Answer: B

Section:

Explanation:

Reference:

<https://docs.microsoft.com/en-us/windows-server/storage/fsrm/file-screening-management>

QUESTION 15

You have a server named Server1 that runs Windows Server. Server1 has the storage pools shown in the following table.

Name	Number of 7,200-RPM HDDs	Number of 10,000-RPM HDDs	Number of SSDs
Pool1	4	4	None
Pool2	None	2	2
Pool3	8	None	4

You plan to create a virtual disk named VDisk1 that will use storage tiers. Which pools can you use to create VDisk1 ?

- A. Pool2 and Pool3 only
- B. Pool 2only
- C. Pool only
- D. Pool, Pool2, and Pool3
- E. Pool1 and Pool2 only
- F. Pool1 and Pool3 only
- G. Pool3 only

Correct Answer: A

Section:

Explanation:

Storage tiering requires both standard HDDs and SSDs. We cannot use Pool1 because it does not have any SSDs.

QUESTION 16

You have an on-premises Active Directory Domain Services (AD DS) domain that syncs with an Azure Active Directory (Azure AD) tenant. You plan deploy 100 new Azure virtual machines that will run Windows Server. You need to ensure that each new virtual machine is joined to the AD DS domain.

What should you use?

- A. Azure AD Connect
- B. a Group Policy Object (GPO)
- C. an Azure Resource Manager (ARM) template
- D. an Azure management group

Correct Answer: C

Section:

Explanation:

Reference:

<https://www.ludovicmedard.com/create-an-arm-template-of-a-virtual-machine-automaticallyjoined-to-a-domain/>

QUESTION 17

You have an on-premises Active Directory Domain Services (AD DS) domain that syncs with an Azure Active Directory (Azure AD) tenant You have several Windows 10 devices that are Azure AD hybrid-joined. You need to ensure that when users sign in to the devices, they can use Windows Hello for Business.

Which optional feature should you select in Azure AD Connect?

- A. Device writeback
- B. Group writeback
- C. Password writeback

- D. Directory extension attribute sync
- E. Azure AD app and attribute filtering

Correct Answer: A

Section:

Explanation:

QUESTION 18

Your network contains an on-premises Active Directory Domain Services (AD DS) domain named contoso.com. The domain contains the objects shown in the following table.

Name	Type
User1	User
Group1	Universal security group
Group2	Domain local security group
Computer1	Computer

You plan to sync contoso.com with an Azure Active Directory (Azure AD) tenant by using Azure AD Connect. You need to ensure that all the objects can be used in Conditional Access policies. What should you do?

- A. Change the scope of Group2 to Universal
- B. Clear the Configure device writeback option.
- C. Change the scope of Group1 and Group2 to Global
- D. Select the Configure Hybrid Azure AD join option.

Correct Answer: D

Section:

Explanation:

Hybrid Azure AD join needs to be configured to enable Computer1 to be used in Conditional Access Policies. Synchronized users, universal groups and domain local groups can be used in Conditional Access Policies.

QUESTION 19

Your network contains a multi-site Active Directory Domain Services (AD DS) forest. Each Active Directory site is connected by using manually configured site links and automatically generated connections. You need to minimize the convergence time for changes to Active Directory.

What should you do?

- A. For each site link, modify the options attribute.
- B. For each site link, modify the site link costs.
- C. For each site link, modify the replication schedule.
- D. Create a site link bridge that contains all the site links.

Correct Answer: C

Section:

Explanation:

Reference:

<https://docs.microsoft.com/en-us/windows-server/identity/ad-ds/plan/determining-the-interval>

QUESTION 20

Your network contains an Active Directory Domain Services (AD DS) domain. The domain contains 10 servers that run Windows Server. The servers have static IP addresses. You plan to use DHCP to assign IP addresses to the servers.



You need to ensure that each server always receives the same IP address.
Which type of identifier should you use to create a DHCP reservation for each server?

- A. universally unique identifier (UUID)
- B. fully qualified domain name (FQDN)
- C. NetBIOS name
- D. MAC address

Correct Answer: D

Section:

Explanation:

Reference:

<https://docs.microsoft.com/en-us/powershell/module/dhcpserver/adddhcpserverv4reservation?view=windowsserver2022-ps>

QUESTION 21

You have an on-premises server named Server1 that runs Windows Server. You have an Azure virtual network that contains an Azure virtual network gateway. You need to connect only Server1 to the Azure virtual network. What should you use?

- A. Azure Network Adapter
- B. a Site-to-SiteVPN
- C. an ExpressRoute circuit
- D. Azure Extended Network

Correct Answer: B

Section:

Explanation:



QUESTION 22

You have a server that runs Windows Server and has the DHCP Server role installed. The server has a scope named Scope1 that has the following configurations:

- Address range: 192.168.0.2 to 192.168.1.2M . Mask 255.255.254.0
- Router: 192.168.0.1
- Lease duration: 3 days
- DNS server 172.16.0.254

You have 50 Microsoft Teams Phone devices from the same vendor. All the devices have MAC addresses within the same range. You need to ensure that all the Teams Phone devices that receive a lease from Scope1 have IP addresses in the range of 192.168.1.100 to 192.168.1.200. The solution must NOT affect other DHCP clients that receive IP configurations from Scope1.

What should you create?

- A. a policy
- B. a scope
- C. a fitter
- D. scope options

Correct Answer: A

Section:

Explanation:

Reference:

[https://docs.microsoft.com/en-us/previous-versions/windows/it-pro/windows-server-2012-R2-and-2012/dn425040\(v=ws.11\)](https://docs.microsoft.com/en-us/previous-versions/windows/it-pro/windows-server-2012-R2-and-2012/dn425040(v=ws.11))

QUESTION 23

You have an on-premises Active Directory Domain Services (AD DS) domain that syncs with an Azure Active Directory (Azure AD) tenant. The on-premises network is connected to Azure by using a Site-to-Site VPN. You have the DNS zones shown in the following table.

Name	Location	Description
contoso.com	A domain controller named DC1 on the on-premises network	Provides name resolution on-premises
fabrikam.com	An Azure private DNS zone	Provides name resolution for all Azure virtual networks

You need to ensure that names from fabrikam.com can be resolved from the on-premises network. Which two actions should you perform? Each correct answer presents part of the solution. NOTE: Each correct selection is worth one point.

- A. Create a conditional forwarder for fabrikam.com on DC1.
- B. Create a stub zone for fabrikam.com on DC1.
- C. Create a secondary zone for fabrikam.com on DC1.
- D. Deploy an Azure virtual machine that runs Windows Server. Modify the DNS Servers settings for the virtual network.
- E. Deploy an Azure virtual machine that runs Windows Server. Configure the virtual machine as a DNS forwarder.

Correct Answer: A, E

Section:

Explanation:

Reference:

<https://docs.microsoft.com/en-us/azure/private-link/private-endpoint-dns#on-premises-workloads-using-a-dns-forwarder>

QUESTION 24

Your company has a main office and a branch office. The two offices are connected by using a WAN link. Each office contains a firewall that filters WAN traffic. The network in the branch office contains 10 servers that run Windows Server. All servers are administered from the main office only. You plan to manage the servers in the branch office by using a Windows Admin Center gateway.

On a server in the branch office, you install the Windows Admin Center gateway by using the default settings. You need to configure the firewall in the branch office to allow the required inbound connection to the Windows Admin Center gateway. Which inbound TCP port should you allow?

- A. 443
- B. 3389
- C. 5985
- D. 6516

Correct Answer: A

Section:

QUESTION 25

You have an Azure subscription that contains the following resources:

- An Azure Log Analytics workspace
- An Azure Automation account
- Azure Arc

You have an on-premises server named Server1 that is onboarded to Azure Arc. You need to manage Microsoft updates on Server1 by using Azure Arc. Which two actions should you perform? Each correct answer presents part of the solution.

NOTE: Each correct selection is worth one point.

- A. Add Microsoft Sentinel to the Log Analytics workspace

- B. On Server1, install the Azure Monitor agent
- C. From the Automation account, enable Update Management for Server1.
- D. From the Virtual machines data source of the Log Analytics workspace, connect Server1.

Correct Answer: B, C

Section:

Explanation:

Reference:

<https://docs.microsoft.com/en-us/azure/cloud-adoption-framework/manage/hybrid/server/bestpractices/arc-update-management>

QUESTION 26

You have an Azure virtual machine named VM1 that has a private IP address only.

You configure the Windows Admin Center extension on VM1.

You have an on-premises computer that runs Windows 11. You use the computer for server management.

You need to ensure that you can use Windows Admin Center from the Azure portal to manage VM1.

What should you configure?

- A. an Azure Bastion host on the virtual network that contains VM1.
- B. a VPN connection to the virtual network that contains VM1.
- C. a network security group (NSG) rule that allows inbound traffic on port 443.
- D. a private endpoint on the virtual network that contains VM1.

Correct Answer: B

Section:

Explanation:

Reference:

<https://docs.microsoft.com/en-us/windows-server/manage/windows-admin-center/azure/managevm>



QUESTION 27

Note: This question is part of a series of questions that present the same scenario. Each question in the series contains a unique solution that might meet the stated goals. Some question sets might have more than one correct solution, while others might not have a correct solution.

After you answer a question in this section, you will NOT be able to return to it. As a result, these questions will not appear in the review screen. Your network contains an Active Directory Domain Services (AD DS) forest. The forest contains three Active Directory sites named Site1, Site2, and Site3. Each site contains two domain controllers. The sites are connected by using DEFAULTIPSITELINK.

You open a new branch office that contains only client computers.

You need to ensure that the client computers in the new office are primarily authenticated by the domain controllers in Site1. Solution: You create an organization unit (OU) that contains the client computers in the branch office. You configure the Try Next Closest Site Group Policy Object (GPO) setting in a GPO that is linked to the new OU. Does this meet the goal?

- A. Yes
- B. No

Correct Answer: B

Section:

QUESTION 28

Your network contains an Active Directory Domain Services (AD DS) forest. The forest contains three Active Directory sites named Site1, Site2, and Site3. Each site contains two domain controllers. The sites are connected by using DEFAULTIPSITELINK.

You open a new branch office that contains only client computers.

You need to ensure that the client computers in the new office are primarily authenticated by the domain controllers in Site1. Solution: You configure the Try Next Closest Site Group Policy Object (GPO) setting in a GPO that is linked to Site1. Does this meet the goal?

- A. Yes
- B. No

Correct Answer: B
Section:

QUESTION 29

Your network contains an Active Directory Domain Services (AD DS) forest. The forest contains three Active Directory sites named Site1, Site2, and Site3. Each site contains two domain controllers. The sites are connected by using DEFAULTIPSITELINK.

You open a new branch office that contains only client computers.

You need to ensure that the client computers in the new office are primarily authenticated by the domain controllers in Site1. Solution: You create a new subnet object that is associated to Site1.

Does this meet the goal?

- A. Yes
- B. No

Correct Answer: B
Section:

QUESTION 30

Your network contains an Active Directory Domain Services (AD DS) domain named contoso.com.

You need to identify which server is the PDC emulator for the domain.

Solution: From a command prompt, you run netdom.exe query fsmo.

Does this meet the goal?

- A. Yes
- B. No

Correct Answer: A
Section:

Explanation:

Reference:

<https://activedirectorypro.com/how-to-check-fsmo-roles/>

QUESTION 31

Your network contains an Active Directory Domain Services (AD DS) domain named conioso.com.

You need to identify which server is the PDC emulator for the domain.

Solution: from Active Directory Users and Computers, you right-click contoso.com in the console tree, and then select Operations Master Does this meet the goal?

- A. Yes
- B. No

Correct Answer: A
Section:

QUESTION 32

Your network contains an Active Directory Domain Services (AD DS) domain named contoso.com.

You need to identify which server is the PDC emulator for the domain.



Solution: From Active Directory Sites and Services, you right-click Default-First-Site-Name in the console tree, and then select Properties. Does this meet the goal?

- A. Yes
- B. No

Correct Answer: B

Section:

QUESTION 33

Note: This question is part of a series of questions that present the same scenario. Each question in the series contains a unique solution that might meet the stated goals. Some question sets might have more than one correct solution, while others might not have a correct solution.

After you answer a question in this section, you will NOT be able to return to it. As a result, these questions will not appear in the review screen. Your network contains an Active Directory Domain Services (AD DS) domain named contoso.com.

You need to identify which server is the PDC emulator for the domain.

Solution: From Active Directory Domains and Trusts, you right-click Active Directory Domains and Trusts in the console tree, and then select Operations Master. Does this meet the goal?

- A. Yes
- B. No

Correct Answer: B

Section:

QUESTION 34

You have an on premises Active Directory Domain Services (AD DS) domain that syncs with an Azure Active Directory (Azure AD) tenant. You plan to implement self-service password reset (SSPR) in Azure AD. You need to ensure that users that reset their passwords by using SSPR can use the new password resources in the AD DS domain. What should you do?

- A. Deploy the Azure AD Password Protection proxy service to the on premises network.
- B. Run the Microsoft Azure Active Directory Connect wizard and select Password writeback.
- C. Grant the Change password permission for the domain to the Azure AD Connect service account.
- D. Grant the impersonate a client after authentication user right to the Azure AD Connect service account.

Correct Answer: B

Section:

Explanation:

Reference:

<https://docs.microsoft.com/en-us/azure/active-directory/authentication/tutorial-enable-ssprwriteback>

QUESTION 35

You have an Azure Active Directory Domain Services (Azure AD DS) domain named contoso.com.

You need to provide an administrator with the ability to manage Group Policy Objects (GPOs). The solution must use the principle of least privilege. To which group should you add the administrator?

- A. AAD DC Administrators
- B. Domain Admins
- C. Schema Admins
- D. Enterprise Admins
- E. Group Policy Creator Owners

Correct Answer: B

Section:

Explanation:

Only the Domain Admins group and the Enterprise Admins group can fully manage GPOs. Members of the Group Policy Creator Owners group can create new GPOs but they can't link the GPOs to sites, the domain or OUs and they cannot manage existing GPOs.

QUESTION 36

Your network contains an Active Directory Domain Services (AD DS) domain.

You have a Group Policy Object (GPO) named GPO1 that contains Group Policy preferences.

You plan to link GPO1 to the domain.

You need to ensure that the preference in GPO1 apply only to domain member servers and NOT to domain controllers or client computers. All the other Group Policy settings in GPO1 must apply to all the computers. The solution must minimize administrative effort.

Which type of item level targeting should you use?

- A. Domain
- B. Operating System
- C. Security Group
- D. Environment Variable

Correct Answer: B

Section:

Explanation:

Reference:

[https://docs.microsoft.com/en-us/previous-versions/windows/it-pro/windows-server-2012-r2-and-2012/dn789189\(v=ws.11\)#operating-system-targeting](https://docs.microsoft.com/en-us/previous-versions/windows/it-pro/windows-server-2012-r2-and-2012/dn789189(v=ws.11)#operating-system-targeting)

QUESTION 37

Your network contains an Active Directory Domain Services (AD DS) forest named contoso.com. The root domain contains the domain controllers shown in the following table.

Name	FSMO role
DC1	Domain naming master
DC2	RID master
DC3	PDC emulator
DC4	Schema master
DC5	Infrastructure master

A failure of which domain controller will prevent you from creating application partitions?

- A. DC1
- B. DC2
- C. DC3
- D. DC4
- E. DC5

Correct Answer: A

Section:

Explanation:

Reference:

<https://docs.microsoft.com/en-us/troubleshoot/windows-server/identity/fsmo-roles>**QUESTION 38**

You have an on premises Active Directory Domain Services (AD DS) domain that syncs with an Azure Active Directory (Azure AD) tenant. The domain contains two servers named Server1 and Server2. A user named Admin1 is a member of the local Administrators group on Server1 and Server2.

You plan to manage Server1 and Server2 by using Azure Arc. Azure Arc objects will be added to a resource group named RG1. You need to ensure that Admin1 can configure Server1 and Server2 to be managed by using Azure Arc.

What should you do first?

- A. From the Azure portal, generate a new onboarding script.
- B. Assign Admin1 the Azure Connected Machine Onboarding role for RG1.
- C. Hybrid Azure AD join Server1 and Server2.
- D. Create an Azure cloud-only account for Admin1.

Correct Answer: B**Section:****Explanation:**

Reference:

<https://docs.microsoft.com/en-us/azure/azure-arc/servers/onboard-service-principal>**QUESTION 39**

You have an Azure virtual machine named VM1 that runs Windows Server.

You have an Azure subscription that has Microsoft Defender for Cloud enabled.

You need to ensure that you can use the Azure Policy guest configuration feature to manage VM1.

What should you do?

- A. Add the PowerShell Desired State Configuration (DSC) extension to VM1.
- B. Configure VM1 to use a user-assigned managed identity.
- C. Configure VM1 to use a system-assigned managed identity.
- D. Add the Custom Script Extension to VM1.

Correct Answer: C**Section:****Explanation:**

Reference:

<https://docs.microsoft.com/en-us/azure/virtual-machines/extensions/guest-configuration>**QUESTION 40**

You have an Azure virtual machine named VM1 that runs Windows Server and has the following configurations:

Size: D2s_v4

Operating system disk: 127-GiB standard SSD

Data disk 128-GiB standard SSD

Virtual machine generation: Gen 2

You plan to perform the following changes to VM1:

Change the virtual machine size to D4s_v4.

Detach the data disk.

Add a new standard SSD.



Which changes require downtime for VM1?

- A. Detaching the data disk only and adding a new standard SSD.
- B. Detaching the data disk only.
- C. Changing the virtual machine size only.
- D. Adding a new standard SSD only.

Correct Answer: C

Section:

Explanation:

Data disks can be added and detached without requiring downtime. Changing the VM size requires the VM to be restarted.

QUESTION 41

Note: This question is part of a series of questions that present the same scenario. Each question in the series contains a unique solution that might meet the stated goals. Some question sets might have more than one correct solution, while others might not have a correct solution.

After you answer a question in this section, you will NOT be able to return to it. As a result, these questions will not appear in the review screen. You are planning the deployment of DNS to a new network.

You have three internal DNS servers as shown in the following table.

Name	Location	IP address	Local DNS zone
Server1	Montreal	10.0.1.10	contoso.local
Server2	Toronto	10.0.2.10	east.contoso.local
Server3	Seattle	10.0.3.10	west.contoso.local

The contoso.local zone contains zone delegations for east.contoso.local and west.contoso.local. All the DNS servers use root hints. You need to ensure that all the DNS servers can resolve the names of all the internal namespaces and internet hosts. Solution: You configure Server2 and Server3 to forward DNS requests to 10.0.1.10.

Does this meet the goal?

- A. Yes
- B. No

Correct Answer: B

Section:

QUESTION 42

You have an on-premises network that is connected to an Azure virtual network by using a Site-to-Site VPN. Each network contains a subnet that has the same IP address space. The on-premises subnet contains a virtual machine. You plan to migrate the virtual machine to the Azure subnet.

You need to migrate the on-premises virtual machine to Azure without modifying the IP address. The solution must minimize administrative effort. What should you implement before you perform the migration?

- A. Azure Extended Network
- B. Azure Virtual Network NAT
- C. Azure Application Gateway
- D. Azure virtual network peering

Correct Answer: A

Section:

Explanation:

Reference:

<https://docs.microsoft.com/en-us/windows-server/manage/windows-admin-center/azure/azureextended-network>

QUESTION 43

Note: This question is part of a series of questions that present the same scenario. Each question in the series contains a unique solution that might meet the stated goals. Some question sets might have more than one correct solution, while others might not have a correct solution.

After you answer a question in this section, you will NOT be able to return to it. As a result, these questions will not appear in the review screen. You are planning the deployment of DNS to a new network. You have three internal DNS servers as shown in the following table.

Name	Location	IP address	Local DNS zone
Server1	Montreal	10.0.1.10	contoso.local
Server2	Toronto	10.0.2.10	east.contoso.local
Server3	Seattle	10.0.3.10	west.contoso.local

The contoso.local zone contains zone delegations for east.contoso.local and west.contoso.local. All the DNS servers use root hints. You need to ensure that all the DNS servers can resolve the names of all the internal namespaces and internet hosts. Solution: On Server2 and Server3, you configure a conditional forwarder for contoso.local.

Does this meet the goal?

- A. Yes
- B. No

Correct Answer: B

Section:

Explanation:

[https://docs.microsoft.com/en-us/previous-versions/windows/it-pro/windows-server-2008-r2-and-2008/cc794735\(v=ws.10\)](https://docs.microsoft.com/en-us/previous-versions/windows/it-pro/windows-server-2008-r2-and-2008/cc794735(v=ws.10))

QUESTION 44

You have servers that have the DNS Server role installed. The servers are configured as shown in the following table.

Name	Office	Local DNS zone	IP address
Server1	Paris	contoso.com	10.1.1.1
Server2	New York	None	10.2.2.2

All the client computers in the New York office use Server2 as the DNS server.

You need to configure name resolution in the New York office to meet the following requirements:

Ensure that the client computers in New York can resolve names from contoso.com.

Ensure that Server2 forwards all DNS queries for internet hosts to 131.107.100.200.

The solution must NOT require modifications to Server1.

Each correct answer presents part of the solution.

NOTE: Each correct selection is worth one point.

- A. a forwarder
- B. a conditional forwarder
- C. a delegation
- D. a secondary zone
- E. a reverse lookup zone

Correct Answer: A, B

Section:

Explanation:

A conditional forwarder is required for contoso.com.

A forwarder is required for all other domains.

When you have a conditional forwarder and a forwarder configured, the conditional forwarder will be used for the specified domain. You could use a secondary zone for contoso.com but that would require a configuration

change on Server1.

QUESTION 45

Your network contains an Active Directory Domain Services (AD DS) domain named contoso.com.

The domain contains a DNS server named Server1. Server1 hosts a DNS zone named fabrikam.com that was signed by DNSSEC. You need to ensure that all the member servers in the domain perform DNSSEC validation for the fabrikam.com namespace. What should you do?

- A. On Server1, run the Add-DnsServerTrustAnchor cmdlet.
- B. On each member server, run the Add-DnsServerTrustAnchor cmdlet.
- C. From a Group Policy Object (GPO), add a rule to the Name Resolution Policy Table (NRPT).
- D. From a Group Policy Object (GPO), modify the Network List Manager policies.

Correct Answer: C

Section:

QUESTION 46

Note: This question is part of a series of questions that present the same scenario. Each question in the series contains a unique solution that might meet the stated goals. Some question sets might have more than one correct solution, while others might not have a correct solution.

After you answer a question in this section, you will NOT be able to return to it. As a result, these questions will not appear in the review screen. You are planning the deployment of DNS to a new network.

You have three internal DNS servers as shown in the following table.

Name	Location	IP address	Local DNS zone
Server1	Montreal	10.0.1.10	contoso.local
Server2	Toronto	10.0.2.10	east.contoso.local
Server3	Seattle	10.0.3.10	west.contoso.local

The contoso.local zone contains zone delegations for east.contoso.local and west.contoso.local. All the DNS servers use root hints. You need to ensure that all the DNS servers can resolve the names of all the internal namespaces and internet hosts. Solution: On Server2, you create a conditional forwarder for contoso.local and west.contoso.local. On Server3, you create a conditional forwarder for contoso.local and east.contoso.local. Does this meet the goal?

- A. Yes
- B. No

Correct Answer: B

Section:

Explanation:

QUESTION 47

You have a server that runs Windows Server and contains a shared folder named UserData.

You need to limit the amount of storage space that each user can consume in UserData.

What should you use?

- A. Storage Spaces
- B. Work Folders
- C. Distributed File System (DFS) Namespaces
- D. File Server Resource Manager (FSRM)

Correct Answer: D

Section:

Explanation:

Reference:

<https://docs.microsoft.com/en-us/windows-server/storage/fsrm/fsrm-overview>

QUESTION 48

Your network contains an Active Directory Domain Services (AD DS) domain named contoso.com.

The domain contains two servers named Server1 and Server2.

Server1 contains a disk named Disk2. Disk2 contains a folder named UserData. UserData is shared to the Domain Users group. Disk2 is configured for deduplication. Server1 is protected by using Azure Backup. Server1 fails.

You connect Disk2 to Server2.

You need to ensure that you can access all the files on Disk2 as quickly as possible.

What should you do?

- A. Create a storage pool.
- B. Restore files from Azure Backup.
- C. Install the File Server Resource Manager server role.
- D. Install the Data Deduplication server role.

Correct Answer: D

Section:

Explanation:

Reference:

<https://docs.microsoft.com/en-us/windows-server/storage/data-deduplication/overview>

QUESTION 49

Note: This question is part of a series of questions that present the same scenario. Each question in the series contains a unique solution that might meet the stated goals. Some question sets might have more than one correct solution, while others might not have a correct solution.

After you answer a question in this section, you will NOT be able to return to it. As a result, these questions will not appear in the review screen. Your network contains an Active Directory Domain Services (AD DS) forest. The forest contains three Active Directory sites named Site1, Site2, and Site3. Each site contains two domain controllers. The sites are connected by using DEFAULTSITELINK.

You open a new branch office that contains only client computers.

You need to ensure that the client computers in the new office are primarily authenticated by the domain controllers in Site1. Solution: You create a new site named Site4 and associate Site4 to DEFAULTSITELINK.

Does this meet the goal?

- A. Yes
- B. No

Correct Answer: B

Section:

QUESTION 50

Note: This question is part of a series of questions that present the same scenario. Each question in the series contains a unique solution that might meet the stated goals. Some question sets might have more than one correct solution, while others might not have a correct solution.

After you answer a question in this section, you will NOT be able to return to it. As a result, these questions will not appear in the review screen. You are planning the deployment of DNS to a new network.

You have three internal DNS servers as shown in the following table.

Name	Location	IP address	Local DNS zone
Server1	Montreal	10.0.1.10	contoso.local
Server2	Toronto	10.0.2.10	east.contoso.local
Server3	Seattle	10.0.3.10	west.contoso.local

The contoso.local zone contains zone delegations for east.contoso.local and west.contoso.local. All the DNS servers use root hints. You need to ensure that all the DNS servers can resolve the names of all the internal namespaces and internet hosts. Solution: On Server2, you create a conditional forwarder for west.contoso.local. On Server3, you create a conditional forwarder for east.contoso.local. Does this meet the goal?

- A. Yes
- B. No

Correct Answer: B
Section:

QUESTION 51
HOTSPOT

You have a Windows Server container host named Server1 and an Azure subscription. You deploy an Azure container registry named Registry1 to the subscription. On Server1, you create a container image named image1.

You need to store imager in Registry1. Which command should you run on Server1 ? To answer, select the appropriate options in the answer area. NOTE: Each correct selection is worth one point.

Hot Area:



Answer Area:



Section:
Explanation:
<https://docs.microsoft.com/en-us/azure/container-registry/container-registry-get-started-dockercli?tabs=azure-cli#push-the-image-to-your-registry>

QUESTION 52
HOTSPOT

You plan to deploy an Azure virtual machine that will run Windows Server. You need to ensure that an Azure Active Directory (Azure AD) user named user1@contoso.com can connect to the virtual machine by using the Azure Serial Console. What should you do? To answer, select the appropriate options in the answer area. NOTE: Each correct selection is worth one point.

Hot Area:

Answer Area

Configure on the Azure virtual machine:	<ul style="list-style-type: none">Boot diagnostics with a custom storage accountOperating system guest diagnosticsA system-assigned managed identity
Assign the following role to User1:	<ul style="list-style-type: none">Virtual Machine ContributorVirtual Machine Administrator LoginVirtual Machine User Login

Answer Area:

Answer Area

Configure on the Azure virtual machine:	<ul style="list-style-type: none">Boot diagnostics with a custom storage accountOperating system guest diagnosticsA system-assigned managed identity
Assign the following role to User1:	<ul style="list-style-type: none">Virtual Machine ContributorVirtual Machine Administrator LoginVirtual Machine User Login

Section:

Explanation:

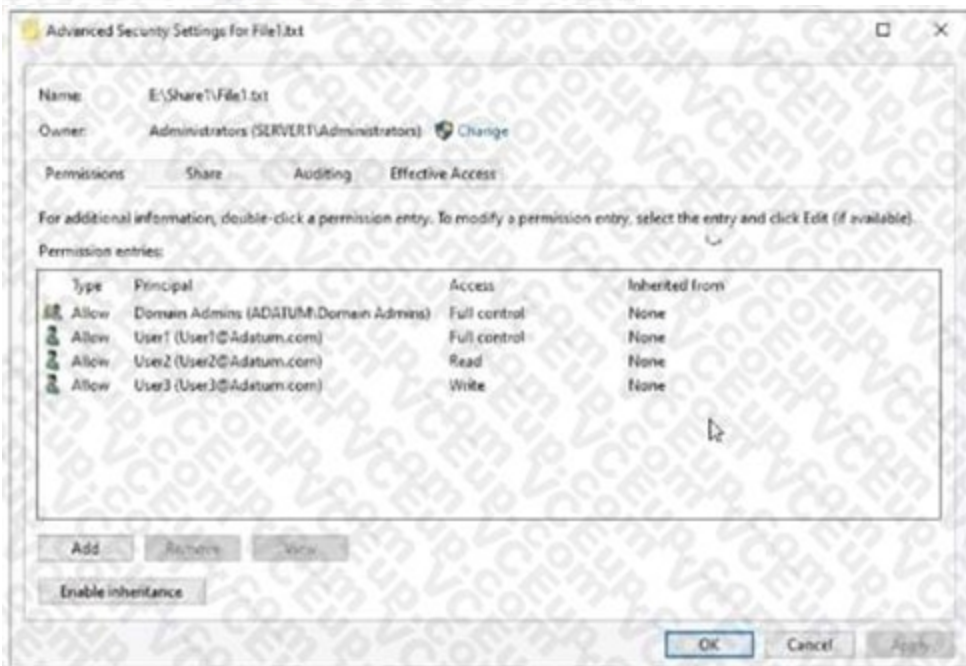
Answer Area

Configure on the Azure virtual machine:	Boot diagnostics with a custom storage account
Assign the following role to User1:	Virtual Machine Contributor

QUESTION 53

HOTSPOT

Your network contains an Active Directory Domain Services (AD DS) domain named adatum.com.



Vdumps

The domain contains a 'He server named Server1 and three users named User1, User2 and User3, Server1 contains a shared folder named Share1 that has the following configurations:

```

ShareState      : Online
AvailabilityType : NonClustered
FolderEnumerationMode : AccessBased
CachingMode    : Manual
LeasingMode    : Full
SmbInstance    : Default
CompressData   : False
ContinuouslyAvailable : False
EncryptData    : False
Name           : Share1
Path           : E:\Share1
ShadowCopy     : False
  
```

The share permissions for Share1 are configured as shown in the Share Permissions exhibit. (Click the Share Permissions tab.) Share1 contains a file named File1.txt. The advanced security settings for File1.txt are configured as shown in the File Permissions exhibit. (Click the File Permissions tab.) For each of the following statements, select Yes if the statement is true. Otherwise, select No.

NOTE: Each correct selection is worth one point.

Hot Area:

Answer Area

Statements	Yes	No
When User1 connects to \\Server1.adatum.com\Share1\, the user can take ownership of File1.txt.	<input type="radio"/>	<input type="radio"/>
When User2 connects to \\Server1.adatum.com\Share1\, File1.txt is visible.	<input type="radio"/>	<input type="radio"/>
When User3 connects to \\Server1.adatum.com\Share1\, File1.txt is visible.	<input type="radio"/>	<input type="radio"/>

Answer Area:

Answer Area

Statements	Yes	No
When User1 connects to \\Server1.adatum.com\Share1\, the user can take ownership of File1.txt.	<input type="radio"/>	<input checked="" type="radio"/>
When User2 connects to \\Server1.adatum.com\Share1\, File1.txt is visible.	<input checked="" type="radio"/>	<input type="radio"/>
When User3 connects to \\Server1.adatum.com\Share1\, File1.txt is visible.	<input checked="" type="radio"/>	<input type="radio"/>

Section:

Explanation:

QUESTION 54

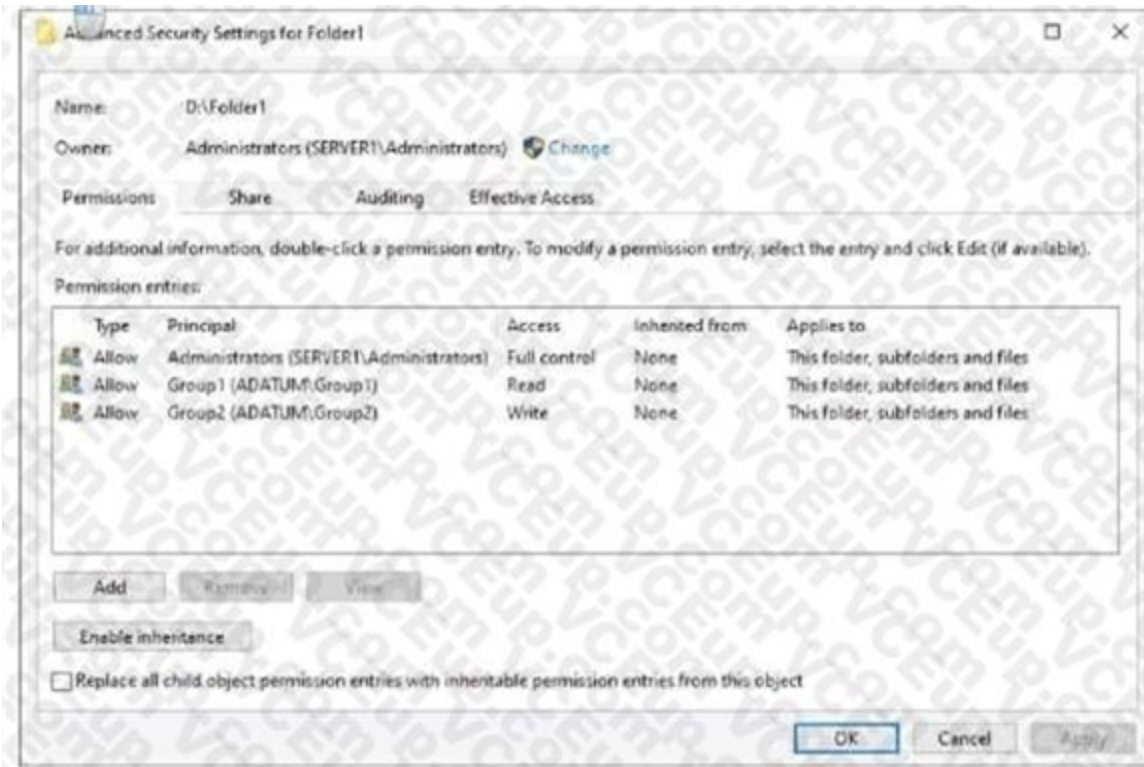
HOTSPOT

Your network contains an Active Directory Domain Services (AD DS) domain named adatum.com. The domain contains a server named Server1 and the users shown in the following table.



Name	Member of
User1	Group1
User2	Group2
User3	Group3

Server1 contains a folder named D:\Folder1. The advanced security settings for Folder 1 are configured as shown in the Permissions exhibit. (Click the Permissions tab.)



Folder1 is shared by using the following configurations

Group	Permission
Group1	Allow - Change
Group3	Allow - Full Control

dumps



Hot Area:

Answer Area

Statements	Yes	No
User1 can read the files in Share1.	<input type="radio"/>	<input type="radio"/>
User3 can delete files in Share1.	<input type="radio"/>	<input type="radio"/>
If User2 connects to \\Server1.adatum.com from File Explorer.	<input type="radio"/>	<input type="radio"/>

Answer Area:

Answer Area

Statements

User1 can read the files in Share1. Yes No

User3 can delete files in Share1. Yes No

If User2 connects to \\Server1.adatum.com from File Explorer. Yes No

Section:

Explanation:

QUESTION 55

HOTSPOT

You need to sync files from an on-premises server named Server1 to Azure by using Azure File Sync. You have a cloud tiering policy that is configured for 30 percent free space and 70 days. Volume f on Server1 is 500 GB. A year ago, you configured E:\Data on Server1 to sync by using Azure File Sync. The files that are visible in E:\Data are shown in the following table.

Name	Size	Last accessed
File1	200 GB	2 days ago
File2	100 GB	10 days ago
File3	200 GB	60 days ago
File4	50 GB	100 days ago

Volume E does NOT contain any other files.

Where are File1 and file3 located? To answer, select the appropriate options in the answer area.



Hot Area:

Answer Area

File1: Server1 only
 The Azure file share only
 Server1 and the Azure file share

File3: Server1 only
 The Azure file share only
 Server 1 and the Azure file share

Answer Area:

Answer Area

File1: Server1 only
 The Azure file share only
 Server1 and the Azure file share

File3: Server1 only
 The Azure file share only
 Server 1 and the Azure file share

Section:

Explanation:

QUESTION 56

HOTSPOT

You have a file server named Server1 that runs Windows Server and contains the volumes shown in the following table.

Name	File system
C	NTFS
D	NTFS
E	REFS

On which volumes can you use BitLocker Drive Encryption (BitLocker) and disk quotas? To answer select the appropriate options in the answer area. NOTE Each correct selection is worth one point.

Hot Area:

Answer Area

BitLocker:

- C only
- D only
- C and D only
- D and E only
- C, D, and E

Disk quotas:

- C only
- D only
- C and D only
- D and E only
- C, D, and E

Answer Area:

Answer Area

BitLocker:

- C only
- D only
- C and D only
- D and E only
- C, D, and E

Disk quotas:

- C only
- D only
- C and D only
- D and E only
- C, D, and E

Section:

Explanation:

BitLocker:

C only
D only
C and D only
D and E only
C, D, and E

Disk quotas:

C only
D only
C and D only
D and E only
C, D, and E

QUESTION 57

HOTSPOT

Your network contains an Active Directory Domain Services (AD DS) domain named contoso.com. The domain contains a server named Server1 that has the DFS Namespaces role service installed. Server1 hosts a domain-based Distributed File System (DFS) Namespace named Files. The domain contains a file server named Server2. Server2 contains a shared folder named Share1. Share1 contains a subfolder named Folder1.

In the Files namespace, you create a folder named Folder1 that has a target of \\Server2.contoso.com\Share1\Folder1. You need to configure a logon script that will map drive letter M to Folder1. The solution must use the path of the DFS Namespace. How should you complete the command to map the drive letter? To answer, select the appropriate options in the answer area. NOTE: Each correct selection is worth one point.

Hot Area:

Answer Area

net use m:

\\contoso.com
\\files.contoso.com
\\Server1.contoso.com
\\Server2.contoso.com

files\folder1
files\share1\folder1
folder1
share1\folder1

Answer Area:

Answer Area

net use m:

\\contoso.com
\\files.contoso.com
\\Server1.contoso.com
\\Server2.contoso.com

files\folder1
files\share1\folder1
folder1
share1\folder1

Section:

Explanation:

QUESTION 58

DRAG DROP

You have two on-premises servers named Server1 and Server2 that run Windows Server.

You have an Azure Storage account named storage1 that contains a file share named share1. Server1 syncs with share1 by using Azure File Sync. You need to configure Server2 to sync with share1. Which three actions should you perform in sequence? To answer, move the appropriate actions from the list of actions to the answer area and arrange them in the correct order.

Select and Place:

Actions

- Register Server2 with the Storage Sync Service.
- Add a Storage Sync Service to the Azure subscription.
- On Server2, install the Azure File Sync agent.
- Add a cloud endpoint to the sync group.
- Add a server endpoint to the sync group.

Answer Area

Correct Answer:

Actions

- Add a Storage Sync Service to the Azure subscription.
- Add a cloud endpoint to the sync group.

Answer Area

- On Server2, install the Azure File Sync agent.
- Register Server2 with the Storage Sync Service.
- Add a server endpoint to the sync group.

Section:

Explanation:

- On Server2, install the Azure File Sync agent.
- Register Server2 with the Storage Sync Service.
- Add a server endpoint to the sync group.

QUESTION 59

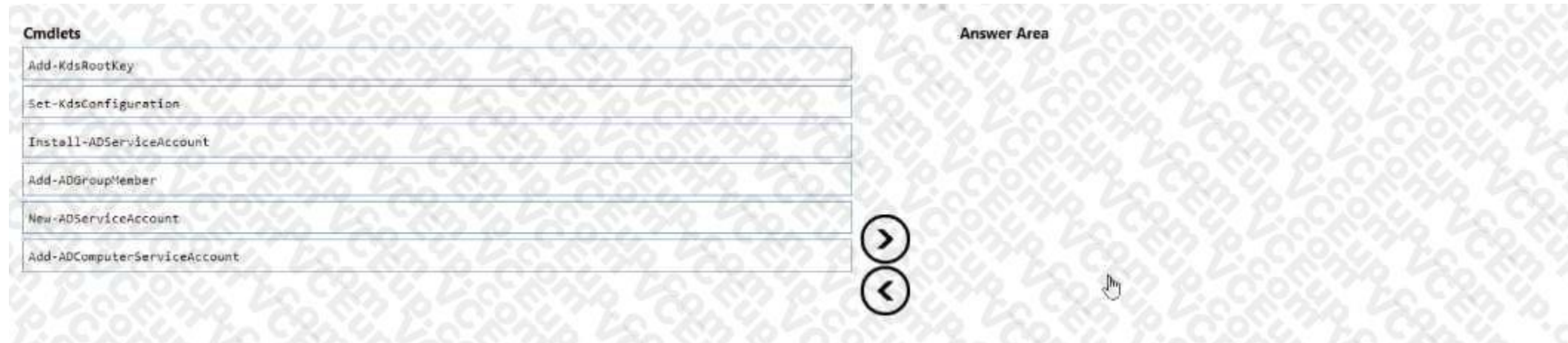
DRAG DROP

You deploy a single-domain Active Directory Domain Services (AD DS) forest named contoso.com.


You deploy five servers to the domain. You add the servers to a group named iTFarmHosts.

You plan to configure a Network Load Balancing (NLB) cluster named NLBCluster.contoso.com that will contain the five servers. You need to ensure that the NLB service on the nodes of the cluster can use a group managed service account (gMSA) to authenticate. Which three PowerShell cmdlets should you run in sequence? To answer, move the appropriate cmdlets from the list of cmdlets to the answer area and arrange them in the correct order.

Select and Place:



Correct Answer:



Section:

Explanation:



<https://docs.microsoft.com/en-us/windows-server/security/group-managed-serviceaccounts/create-the-key-distribution-services-kds-root-key> <https://docs.microsoft.com/en-us/windows-server/security/group-managed-serviceaccounts/getting-started-with-group-managed-service-accounts>

QUESTION 60

HOTSPOT

You have an Azure subscription named sub1 and 500 on-premises virtual machines that run Windows Server. You plan to onboard the on-premises virtual machines to Azure Arc by running the Azure Arc deployment script. You need to create an identity that will be used by the script to authenticate access to sub1. The solution must use the principle of least privilege.

How should you complete the command? To answer, select the appropriate options in the answer area.

NOTE: Each correct selection is worth one point.

Hot Area:

Answer Area

New-AzADAppCredential
New-AzADServicePrincipal
New-AzUserAssignedIdentity

-DisplayName 'Arc-for-servers' -Role

'Azure Connected Machine Onboarding'
'Virtual Machine Contributor'
'Virtual Machine User Login'

Answer Area:

Answer Area

New-AzADAppCredential
New-AzADServicePrincipal
New-AzUserAssignedIdentity

-DisplayName 'Arc-for-servers' -Role

'Azure Connected Machine Onboarding'
'Virtual Machine Contributor'
'Virtual Machine User Login'

Section:

Explanation:

New-AzADAppCredential	-DisplayName 'Arc-for-servers' -Role	Azure Connected Machine Onboarding'
New-AzADServicePrincipal		'Virtual Machine Contributor'
New-AzUserAssignedIdentity		'Virtual Machine User Login'

Reference:

<https://docs.microsoft.com/en-us/azure/azure-arc/servers/onboard-service-principal>



QUESTION 61

DRAG DROP

You create a new Azure subscription.

You plan to deploy Azure Active Directory Domain Services (Azure AD DS) and Azure virtual machines. The virtual machines will be joined to Azure AD DS. You need to deploy Active Directory Domain Services (AD DS) to ensure that the virtual machines can be deployed and joined to Azure AD DS. Which three actions should you perform in sequence? To answer, move the appropriate actions from the list of actions to the answer area and arrange them in the correct order.

Select and Place:

Actions

- Modify the settings of the Azure virtual network.
- Install the Active Directory Domain Services role.
- Install Azure AD Connect.
- Create an Azure virtual network.
- Create an Azure AD DS instance.
- Run the Active Directory Domain Service installation Wizard.

Answer Area

>


<

Correct Answer:

Actions

-
- Install the Active Directory Domain Services role.
- Install Azure AD Connect.
-
-
- Run the Active Directory Domain Service installation Wizard.

Answer Area



- Create an Azure virtual network.
- Create an Azure AD DS instance.
- Modify the settings of the Azure virtual network.

>

<

Section:

Explanation:

<https://docs.microsoft.com/en-us/azure/active-directory-domain-services/tutorial-create-instance>

QUESTION 62

HOTSPOT

You have an Azure Active Directory Domain Services (Azure AD DS) domain.

You create a new user named Admin1.

You need Admin1 to deploy custom Group Policy settings to all the computers in the domain. The solution must use the principle of least privilege. What should you include in the solution? To answer, select the appropriate options in the answer area. NOTE: Each correct selection is worth one point

Hot Area:

Add Admin1 to the following group:

<input type="checkbox"/>	AAD DC Administrators
<input type="checkbox"/>	Domain Admins
<input type="checkbox"/>	Group Policy Creator Owners

Instruct Admin1 to apply the custom Group Policy settings by:

<input type="checkbox"/>	Creating a new Group Policy Object (GPO) and linking the GPO to the domain
<input type="checkbox"/>	Modifying AADDC Computers GPO
<input type="checkbox"/>	Modifying the default domain GPO

Answer Area:

Add Admin1 to the following group:

<input checked="" type="checkbox"/>	AAD DC Administrators
<input type="checkbox"/>	Domain Admins
<input type="checkbox"/>	Group Policy Creator Owners

Instruct Admin1 to apply the custom Group Policy settings by:

<input type="checkbox"/>	Creating a new Group Policy Object (GPO) and linking the GPO to the domain
<input checked="" type="checkbox"/>	Modifying AADDC Computers GPO
<input type="checkbox"/>	Modifying the default domain GPO

Section:

Explanation:

Reference:

<https://docs.microsoft.com/en-us/azure/active-directory-domain-services/manage-group-policy>

QUESTION 63

DRAG DROP

Your network contains a single domain Active Directory Domain Services (AD DS) forest named contoso.com. The forest contains a single Active Directory site. You plan to deploy a read only domain controller (RODC) to a new datacenter on a server named Server1. A user named User1 is a member of the local Administrators group on Server1. You need to recommend a deployment plan that meets the following requirements:


Ensures that a user named User1 can perform the RODC installation on Server1 Ensures that you can control the AD DS replication schedule to the Server1 Ensures that Server1 is in a new site named RemoteSite1 Uses the

principle of least privilege Which three actions should you recommend performing in sequence? To answer, move the appropriate actions from the list of actions to the answer area and arrange them in the correct order.

Select and Place:

Actions	Answer Area
Instruct User1 to run the Active Directory Domain Services installation Wizard on Server1.	
Create a site and a subnet.	
Create a site link.	
Pre-create an RODC account.	
Add User1 to the Contoso\Administrators group.	

Navigation arrows: > and <



Correct Answer:

Actions	Answer Area
	Create a site and a subnet.
	Pre-create an RODC account.
Create a site link.	Instruct User1 to run the Active Directory Domain Services installation Wizard on Server1.
Add User1 to the Contoso\Administrators group.	

Navigation arrows: > and <

Section:

Explanation:

Box 1.

We need to create a site and subnet for the remote site. The new site will be added to the Default IP Site Link so we don't need to create a new site link. You configure the replication schedule on the site link. Box 2. When we pre-create an RODC account, we can specify who is allowed to attach the server to the prestaged account. This means that the User1 does not need to be added to the Domain Admins group. Box3. User1 can connect the RODC to the prestaged account by running the AD DS installation wizard.

Reference:

<https://mehic.se/2018/01/02/how-to-install-and-configure-read-only-domain-controller-rod-2016/>

QUESTION 64

DRAG DROP

You deploy a new Active Directory Domain Services (AD DS) forest named contoso.com. The domain contains three domain controllers named DC1, DC2, and DC3. You rename Default-First-Site-Name as Site1.

You plan to ship DC1, DC2, and DC3 to datacenters in different locations.

You need to configure replication between DC1, DC2, and DC3 to meet the following requirements:

Each domain controller must reside in its own Active Directory site.

The replication schedule between each site must be controlled independently.

Interruptions to replication must be minimized.

Which three actions should you perform in sequence in the Active Directory Sites and Services console? To answer, move the appropriate actions from the list of actions to the answer area and arrange them in the correct order.

Select and Place:

Actions

- Create a connection object between DC1 and DC2.
- Create an additional site link that contains Site1 and Site2.
- Create two additional sites named Site2 and Site3. Move DC2 to Site2 and DC3 to Site3.
- Create a connection object between DC2 and DC3.
- Remove Site2 from DEFAULTIPSITELINK.

Answer Area

v-dumps

Correct Answer:

Actions	Answer Area
<input type="checkbox"/>	<input type="checkbox"/> Create two additional sites named Site2 and Site3. Move DC2 to Site2 and DC3 to Site3.
<input type="checkbox"/> Create an additional site link that contains Site1 and Site2.	<input type="checkbox"/> Create a connection object between DC1 and DC2.
<input type="checkbox"/>	<input type="checkbox"/> Create a connection object between DC2 and DC3.
<input type="checkbox"/>	
<input type="checkbox"/> Remove Site2 from DEFAULTIPSITELINK.	



Section:

Explanation:

QUESTION 65

HOTSPOT

You have 10 on-premises servers that run Windows Server.

You plan to use Azure Network Adapter to connect the servers to the resources in Azure.

Which prerequisites do you require on-premises and in Azure? To answer, select the appropriate options in the answer area. NOTE: Each correct selection is worth one point.

Hot Area:



To configure the on-premises servers, use:

Azure CLI
Routing and Remote Access
Server Manager
Windows Admin Center

To connect the Azure resources and Azure Network Server Manager Adapter, use:

Azure Bastion
Azure Firewall
An Azure virtual network gateway
A private endpoint
A public Azure Load Balancer

Answer Area:

To configure the on-premises servers, use:

Azure CLI
Routing and Remote Access
Server Manager
Windows Admin Center

To connect the Azure resources and Azure Network Server Manager Adapter, use:

Azure Bastion
Azure Firewall
An Azure virtual network gateway
A private endpoint
A public Azure Load Balancer

Section:

Explanation:

Reference:

<https://docs.microsoft.com/en-us/windows-server/manage/windows-admin-center/azure/useazure-network-adapter>

QUESTION 66

DRAG DROP

You have a server named Server1 that has Windows Admin Center installed. The certificate used by Windows Admin Center was obtained from a certification authority (CA). The certificate expires.

You need to replace the certificate.

Which three actions should you perform in sequence? To answer, move the appropriate actions from the list of actions to the answer area and arrange them in the correct order.

Select and Place:

Actions

Answer Area

Copy the certificate thumbprint.

From Internet Information Services (IIS) Manager, bind a certificate.




Rerun **Windows Admin Center Setup** and select **Change**.

Rerun **Windows Admin Center Setup** and select **Repair**.

Rerun **Windows Admin Center Setup** and select **Remove**.



Correct Answer:

Actions	Answer Area
	From Internet Information Services (IIS) Manager, bind a certificate.
	Copy the certificate thumbprint.
	 Rerun Windows Admin Center Setup and select Change .
Rerun Windows Admin Center Setup and select Repair .	
Rerun Windows Admin Center Setup and select Remove .	

Section:

Explanation:

Reference:

<https://www.starwindsoftware.com/blog/change-the-windows-admin-center-certificate>

QUESTION 67

HOTSPOT

You have an on-premises server named Server1 that runs Windows Server and has internet connectivity. You have an Azure subscription.

You need to monitor Server1 by using Azure Monitor.

Which resources should you create in the subscription, and what should you install on Server1? To answer, select the appropriate options in the answer area. NOTE: Each correct selection is worth one point.

Hot Area:

In the subscription, create:

- | |
|--|
| An Azure Files storage account |
| A Log Analytics workspace |
| An Azure SQL database and a data collection rule |
| An Azure Blob Storage account and a data collection rule |

On Server1, install:

- | |
|---|
| The Azure Monitor agent |
| The Analytics gateway |
| The Device Health Attestation server role |

Answer Area:

In the subscription, create:

- | |
|--|
| An Azure Files storage account |
| A Log Analytics workspace |
| An Azure SQL database and a data collection rule |
| An Azure Blob Storage account and a data collection rule |

On Server1, install:

- | |
|---|
| The Azure Monitor agent |
| The Analytics gateway |
| The Device Health Attestation server role |

Section:

Explanation:

Reference:

<https://docs.microsoft.com/en-us/windows-server/manage/windows-admin-center/azure/azuremonitor>

QUESTION 68

HOTSPOT

You have a Windows Server container host named Server1 that has a single disk.

On Server1, you plan to start the containers shown in the following table.

Name	Description
Container1	Container1 is a Windows container that contains a web app in development. The container must NOT share a kernel with other containers.
Container2	Container2 is a Linux container that runs a web app. The container requires two static IP addresses.
Container3	Container3 is a Windows container that runs a database. The container requires a static IP address.

Which isolation mode can you use for each container? To answer, select the appropriate options in the answer area. NOTE: Each correct selection is worth one point.

Hot Area:

Container1:

<input type="checkbox"/>	Hyper-V isolation only
<input type="checkbox"/>	Process isolation only
<input type="checkbox"/>	Hyper-V isolation or process isolation

Container2:

<input type="checkbox"/>	Hyper-V isolation only
<input type="checkbox"/>	Process isolation only
<input type="checkbox"/>	Hyper-V isolation or process isolation

Container3:

<input type="checkbox"/>	Hyper-V isolation only
<input type="checkbox"/>	Process isolation only
<input type="checkbox"/>	Hyper-V isolation or process isolation

Answer Area:

Container1:	
	Hyper-V isolation only
	Process isolation only
	Hyper-V isolation or process isolation
Container2:	
	Hyper-V isolation only
	Process isolation only
	Hyper-V isolation or process isolation
Container3:	
	Hyper-V isolation only
	Process isolation only
	Hyper-V isolation or process isolation

Section:

Explanation:

Reference:

<https://docs.microsoft.com/en-us/virtualization/windowscontainers/manage-containers/hypervcontainer>

QUESTION 69

DRAG DROP

You have a server named Server1 that runs Windows Server and has the Hyper V server role installed. Server1 hosts a virtual machine named VM1. Server1 has an NVMe storage device. The device is currently assigned to VM1 by using Discrete Device Assignment. You need to make the device available to Server1.

Which four actions should you perform in sequence? To answer, move the appropriate actions from the list of actions to the answer area and arrange them in the correct order.

Select and Place:

Actions	Answer Area
From Server1, stop VM1.	
From Server1, run the Remove-VMAssignableDevice cmdlet.	
From Server1, run the Mount-VMHostAssignableDevice cmdlet.	
From Server1, enable the device by using Device Manager.	
From VM1, disable the device by using Device Manager.	

Correct Answer:

Actions	Answer Area
	From Server1, stop VM1.
	From Server1, run the Remove-VMAssignableDevice cmdlet.
	From Server1, run the Mount-VMHostAssignableDevice cmdlet.
	From Server1, enable the device by using Device Manager.
From VM1, disable the device by using Device Manager.	

Section:

Explanation:

Reference:

<https://docs.microsoft.com/en-us/windows-server/virtualization/hyper-v/deploy/deploying-storage-devices-using-dda>

QUESTION 70

HOTSPOT

You have on-premises file servers that run Windows Server as shown in the following table.

Name	Relevant folder
Server1	D:\Folder1, E:\Folder2
Server2	D:\Data

You have the Azure file shares shown in the following table.

Name	Location
share1	East US
share2	East US

You add a Storage Sync Service named Sync1 and an Azure File Sync sync group named Group1.

Group1 uses share1 as a cloud endpoint.

You register Server1 and Server2 with Sync1. You add D:\Folder1 from Server1 as a server endpoint in Group1. For each of the following statements, select Yes if the statement is true. Otherwise, select No.

NOTE: Each correct selection is worth one point.

Hot Area:

Statements	Yes	No
You can create a file named File2.docx in D:\Folder1 on Server1.	<input type="checkbox"/>	<input type="checkbox"/>
You can create a file named File1.docx in D:\Data1 on Server2.	<input type="checkbox"/>	<input type="checkbox"/>
File3.docx will sync to Server1.	<input type="checkbox"/>	<input type="checkbox"/>

Answer Area:

Statements	Yes	No
You can create a file named File2.docx in D:\Folder1 on Server1.	<input type="radio"/>	<input checked="" type="radio"/>
You can create a file named File1.docx in D:\Data1 on Server2.	<input checked="" type="radio"/>	<input type="radio"/>
File3.docx will sync to Server1.	<input checked="" type="radio"/>	<input type="radio"/>

Section:

Explanation:

Reference:

<https://docs.microsoft.com/en-us/azure/storage/file-sync/file-sync-planning>

QUESTION 71

HOTSPOT

You need to sync files from an on premises server named Server1 to Azure by using Azure File Sync.

You have a cloud tiering policy that is configured for 30 percent free space and 70 days.

Volume E on Server1 is 500 GB.

A year ago, you configured E:\Data on Server1 to sync by using Azure File Sync. The files that are visible in E:\Data are shown in the following table.



Name	Size	Last accessed
File1	200 GB	2 days ago
File2	100 GB	10 days ago
File3	200 GB	60 days ago
File4	50 GB	100 days ago

Volume E does NOT contain any other files.

Where are File1 and File3 located? To answer, select the appropriate options in the answer area.

NOTE: Each correct selection is worth one point.

Hot Area:

File1:

Server1 only
The Azure file share only
Server1 and the Azure file share

File3:

Server1 only
The Azure file share only
Server1 and the Azure file share

Answer Area:

File1:

Server1 only
The Azure file share only
Server1 and the Azure file share

File3:

Server1 only
The Azure file share only
Server1 and the Azure file share



Section:

Explanation:

QUESTION 72

HOTSPOT

You have on-premises servers that run Windows Server as shown in the following table.

Name	Local content
Server1	D:\Folder1\File1.docx
Server2	D:\Data1\File3.docx

You have an Azure file share named share1 that stores two files named File2.docx and File3.docx.

You create an Azure File Sync sync group that includes the following endpoints: share D:\Folder1 on Server1 D:\Data1 on Server2 For each of the following statements, select Yes if the statement is true. Otherwise, select No. NOTE: Each correct selection is worth one point.

Hot Area:

Statements	Yes	No
You can create a file named File2.docx in D:\Folder1 on Server1.	<input type="checkbox"/>	<input type="checkbox"/>
You can create a file named File1.docx in D:\Data1 on Server2.	<input type="checkbox"/>	<input type="checkbox"/>
File3.docx will sync to Server1.	<input type="checkbox"/>	<input type="checkbox"/>

Answer Area:

Statements	Yes	No
You can create a file named File2.docx in D:\Folder1 on Server1.	<input checked="" type="checkbox"/>	<input type="checkbox"/>
You can create a file named File1.docx in D:\Data1 on Server2.	<input checked="" type="checkbox"/>	<input type="checkbox"/>
File3.docx will sync to Server1.	<input type="checkbox"/>	<input checked="" type="checkbox"/>

Section:

Explanation:

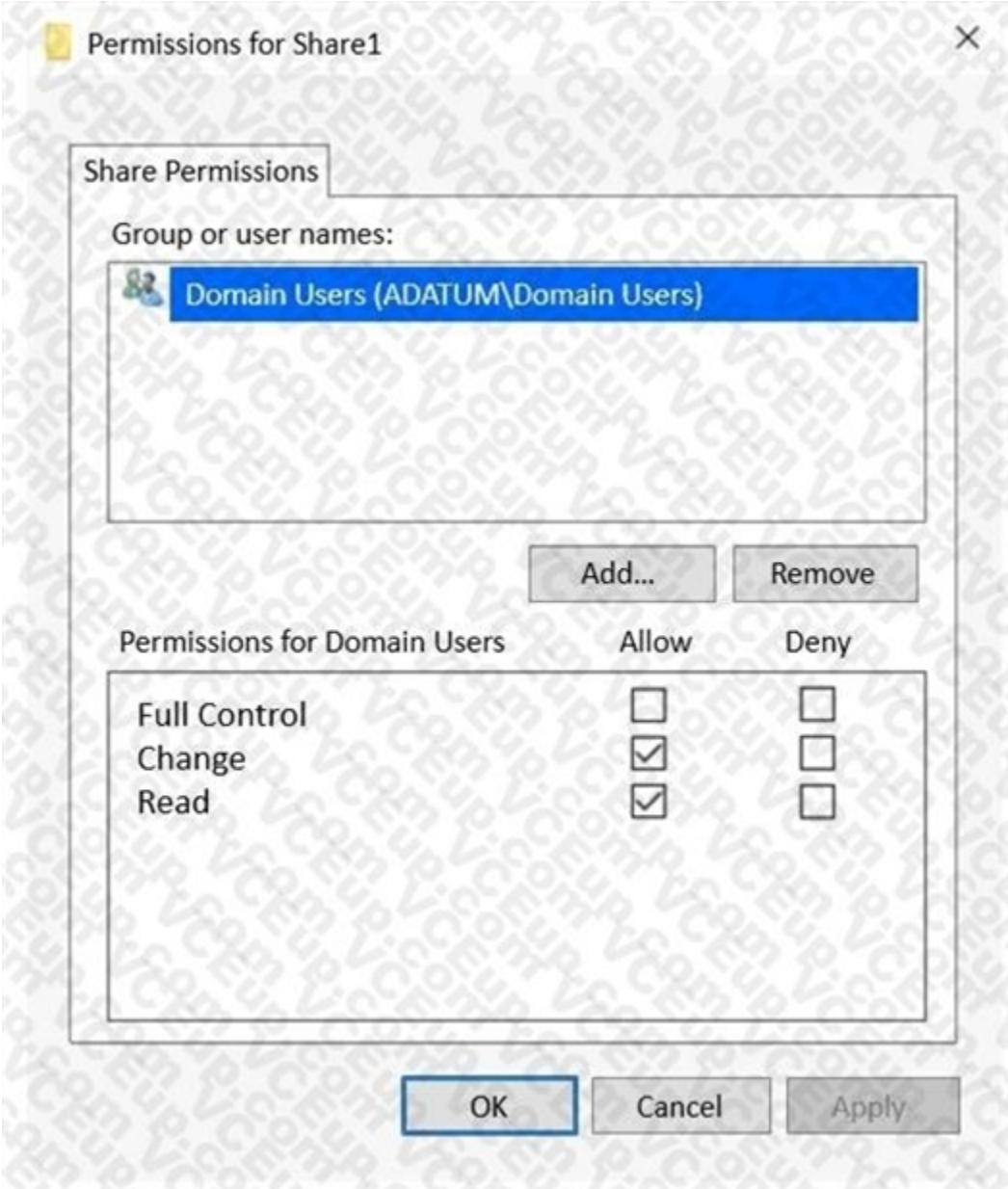
QUESTION 73

HOTSPOT

Your network contains an Active Directory Domain Services (AD DS) domain named adatum.com. The domain contains a file server named Server1 and three users named User1, User2, and User3. Server1 contains a shared folder named Share1 that has the following configurations:

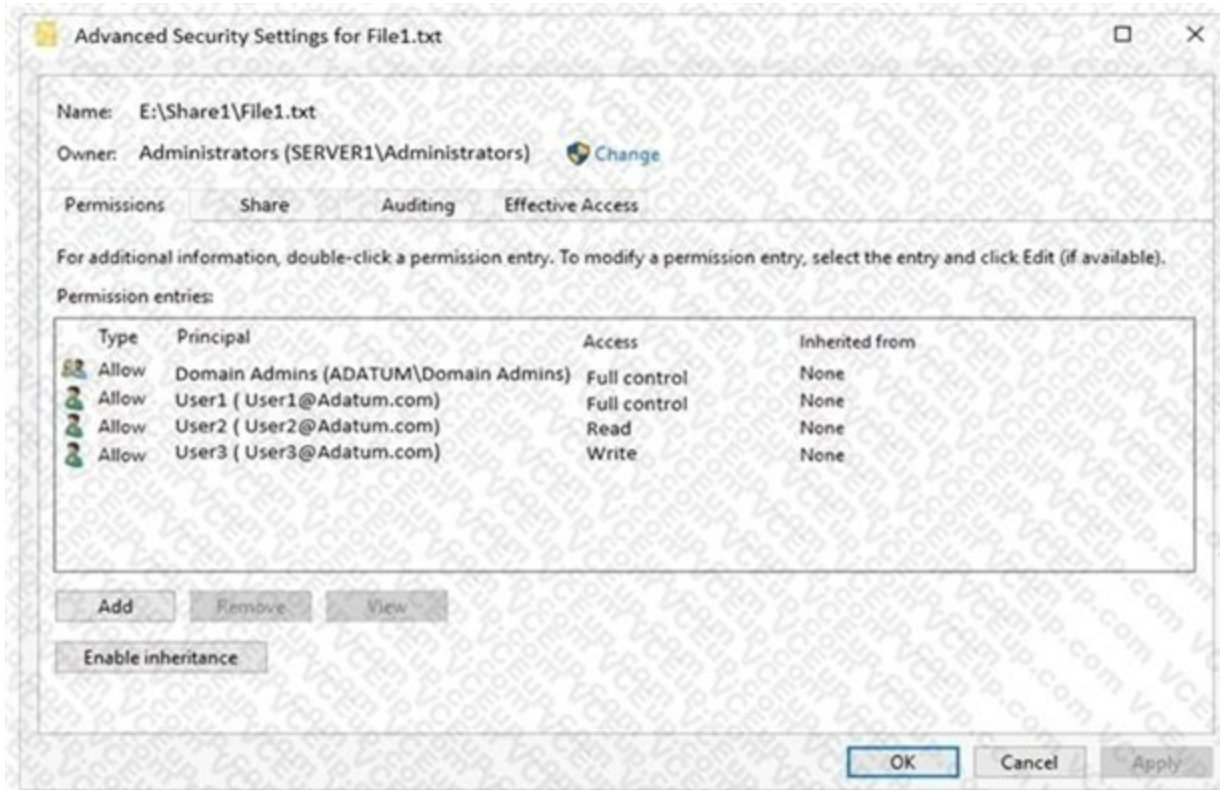

```
ShareState      : Online
AvailabilityType : NonClustered
FolderEnumerationMode : AccessBased
CachingMode    : Manual
LeasingMode    : Full
SmbInstance    : Default
CompressData   : False
ContinuouslyAvailable : False
EncryptData    : False
Name           : Share1
Path           : E:\Share1
ShadowCopy     : False
```

The share permissions for Share1 are configured as shown in the Share Permissions exhibit.



Share1 contains a file named File1.txt. The advanced security settings for File1.txt are configured as shown in the File Permissions exhibit.





For each of the following statements, select Yes if the statement is true. Otherwise, select No.
NOTE: Each correct selection is worth one point.

Hot Area:



Statements

When User1 connects to \\Server1.adatum.com\Share1\, the user can take ownership of File1.txt.

 Yes No

When User2 connects to \\Server1.adatum.com\Share1\, File1.txt is visible.

 Yes No

When User3 connects to \\Server1.adatum.com\Share1\, File1.txt is visible.

 Yes No

Answer Area:

Statements	Yes	No
When User1 connects to \\Server1.adatum.com\Share1\, the user can take ownership of File1.txt.	<input type="radio"/>	<input checked="" type="radio"/>
When User2 connects to \\Server1.adatum.com\Share1\, File1.txt is visible.	<input checked="" type="radio"/>	<input type="radio"/>
When User3 connects to \\Server1.adatum.com\Share1\, File1.txt is visible.	<input checked="" type="radio"/>	<input type="radio"/>

Section:

Explanation:

QUESTION 74

SIMULATION LAB 12

You need to create a Group Policy Object (GPO) named GPO1 that only applies to a group named MemberServers.

A. See the solution of this Task below

Correct Answer: A

Section:

Explanation:

To create a GPO named GPO1 that only applies to a group named MemberServers, you can follow these steps:

On a domain controller or a computer that has the Remote Server Administration Tools (RSAT) installed, open Group Policy Management from the Administrative Tools menu or by typing `gpmc.msc` in the Run box.

In the left pane, expand your domain and right-click on Group Policy Objects. Select **New** to create a new GPO.

In the New GPO dialog box, enter `GPO1` as the Name of the new GPO and click **OK**. You can also optionally select a source GPO to copy the settings from.

Right-click on the new GPO and select **Edit** to open the Group Policy Management Editor. Here, you can configure the settings that you want to apply to the group under the **Computer Configuration** and **User Configuration** nodes.

For more information on how to edit a GPO, see [Edit a Group Policy Object](#).

Close the Group Policy Management Editor and return to the Group Policy Management console. Right-click on the new GPO and select **Scope**. Here, you can specify the scope of management for the GPO, such as the links, security filtering, and WMI filtering.

Under the **Security Filtering** section, click on **Authenticated Users** and then click on **Remove**. This will remove the default permission granted to all authenticated users and computers to apply the GPO.

Click on **Add** and then type the name of the group that you want to apply the GPO to, such as `MemberServers`. Click **OK** to add the group to the security filter. You can also click on **Advanced** to browse the list of groups available in the domain.

Optionally, you can also configure the **WMI Filtering** section to further filter the GPO based on the Windows Management Instrumentation (WMI) queries. For more information on how to use WMI filtering, see [Filter the scope of a GPO by using WMI filters](#).

To link the GPO to an organizational unit (OU) or a domain, right-click on the OU or the domain in the left pane and select **Link an Existing GPO**. Select the GPO that you created, such as `GPO1`, and click **OK**. You can also change the order of preference by using the **Move Up** and **Move Down** buttons.

Wait for the changes to replicate to other domain controllers. You can also force the update of the GPO by using the `gpupdate /force` command on the domain controller or the client computers. For more information on how to update a GPO, see [Update a Group Policy Object](#).

Now, you have created a GPO named GPO1 that only applies to a group named MemberServers. You can verify the GPO application by using the `gpresult /r` command on a member server and checking the **Applied Group Policy Objects** entry. You can also use the **Group Policy Results** wizard in the Group Policy Management console to generate a report of the GPO application for a specific computer or user. For more information on how to use the Group Policy Results wizard, see [Use the Group Policy Results Wizard](#).

QUESTION 75

You have an Active Directory Domain Services (AD DS) domain that contains the domain controllers shown in the following table.

Name	Operations master role
DC1	Schema master
DC2	Infrastructure master
DC3	Domain naming master
DC4	PDC emulator, RID master

The domain contains an app named App1 that uses a custom application partition to store configuration data. You decommission App1. When you attempt to remove the custom application partition, the process fails. Which domain controller is unavailable?

- A. DC1
- B. DC2
- C. DC3
- D. DC4

Correct Answer: C

Section:

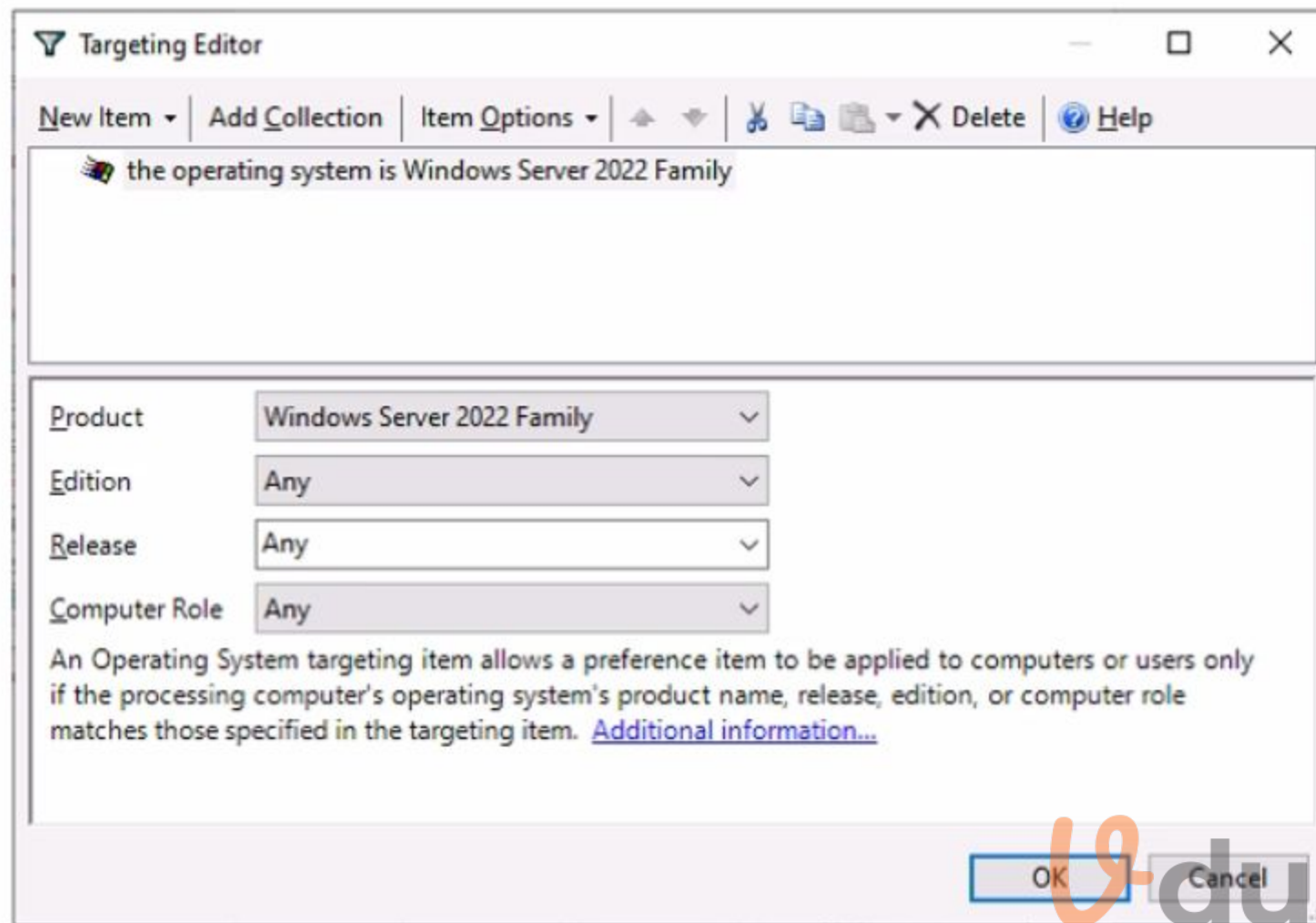
QUESTION 76

Your network contains an Active Directory domain named contoso.com. The domain contains the computers shown in the following table.



Name	Operating system
Computer1	Windows 11
Server1	Windows Server 2016
Server2	Windows Server 2019
Server3	Windows Server 2022

On Server3, you create a Group Policy Object (GPO) named GP01 and link GPOI to contoso.com. GP01 includes a shortcut preference named Shortcut1 that has item-level targeting configured as shown in the following exhibit.



To which computer will Shortcut1 be applied?

- A. Server3 only
- B. Computer1 and Server3 only
- C. Server2 and Server3 only
- D. Server1, Server2, and Server3 only

Correct Answer: A

Section:

QUESTION 77

You have an on-premises Active Directory Domain Services (AD DS) domain that syncs with a Microsoft Entra tenant.

You deploy an app that adds custom attributes to the domain.

From Azure Cloud Shell, you discover that you cannot query the custom attributes of users.

You need to ensure that the custom attributes are available in Microsoft Entra ID.

Which task should you perform from Microsoft Entra Connect first?

- A. Refresh directory schema
- B. Configure device options
- C. Customize synchronization options
- D. Manage federation

Correct Answer: C

Section:

QUESTION 78

You have four testing devices that are configured with static IP addresses as shown in the following table.

Name	IP address
TestDevice1	192.168.16.242
TestDevice2	192.168.16.243
TestDevice3	192.168.16.244
TestDevice4	192.168.16.245

The test devices are turned on once a month.

You need to prevent Server1 from assigning the IP addresses allocated to the test devices to other devices when the test devices are offline. The solution must minimize administrative effort.

What should you do?

- A. Create an exclusion range.
- B. Create reservations.
- C. Configure the Scope options.
- D. Create a policy.

Correct Answer: B

Section:

QUESTION 79

HOTSPOT

You have an Azure subscription and a computer named Computer1 that runs Windows 11.

From the Azure portal, you deploy a virtual machine named VM1 that runs Windows Server. You configure VM1 to use the default settings.

You need to ensure that you can connect to VM1 by using PowerShell remoting.

Which cmdlet should you run, and what should you use to run the cmdlet? To answer, select the appropriate options in the answer area.

NOTE: Each correct selection is worth one point.

Hot Area:

Answer Area

Run from: ▼

- A PowerShell session on Computer1
- A PowerShell session on VM1**
- Azure Cloud Shell

Cmdlet: ▼

- Enable-AzVMPSRemoting
- Enable-AzVMPSRemoting**
- Enable-PSRemoting -Force
- Enable-PSSessionConfiguration

Answer Area:

Answer Area

Run from:

- A PowerShell session on Computer1
- A PowerShell session on VM1**
- Azure Cloud Shell

Cmdlet:

- Enable-AzVMPSRemoting**
- Enable-PSRemoting -Force
- Enable-PSSessionConfiguration

Section:

Explanation:

QUESTION 80

DRAG DROP

You have a server named Server1.

You plan to use Storage Spaces to expand the storage available to Server1. You attach eight physical disks to Server1. Four disks are HDDs and four are SSDs. You need to create a volume on Server1 that will use the storage on all the new disks. The solution must provide the fastest read performance for frequently used files. Which three actions should you perform in sequence? To answer, move the appropriate actions from the list of actions to the answer area and arrange them in the correct order.

Select and Place:



Actions

- Create a virtual disk.
- Convert each new disk into a dynamic disk.
- Create a storage pool.
- Create a spanned volume.
- Convert each new disk into a GPT disk.
- Create a simple volume



Correct Answer:

Actions	Answer Area
Convert each new disk into a dynamic disk.	Create a storage pool.
	Create a virtual disk.
Create a spanned volume.	Create a simple volume
Convert each new disk into a GPT disk.	



Section:

Explanation:

Reference:

<https://redmondmag.com/articles/2018/07/31/storage-spaces-windows-server-2016-1.aspx>

<https://redmondmag.com/articles/2018/08/02/storage-spaces-windows-server-2016-2.aspx>



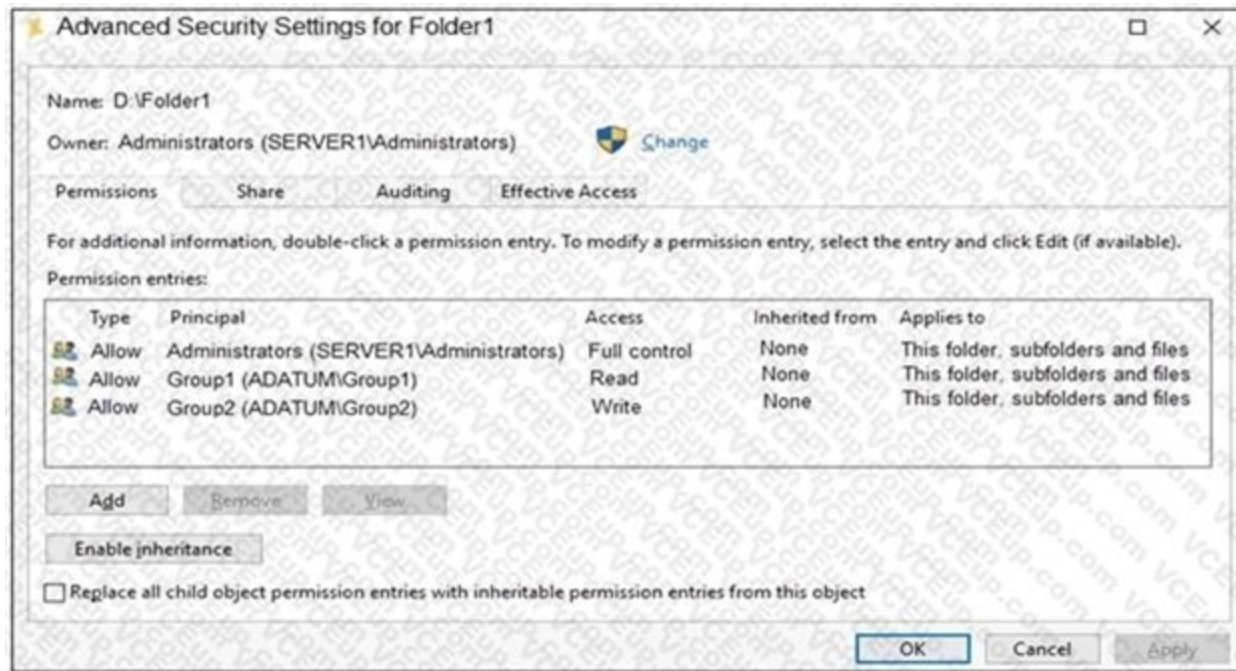
QUESTION 81

HOTSPOT

Your network contains an Active Directory Domain Services (AD DS) domain named adatum.com. The domain contains a server named Server1 and the users shown in the following table.

Name	Member of
User1	Group1
User2	Group2
User3	Group3

Server1 contains a folder named D:\Folder1. The advanced security settings for Folder1 are configured as shown in the Permissions exhibit. (Click the Permissions tab.)



Folder1 is shared by using the following configurations:

```
Path : D:\Folder1
Name : Share1
ShareType : FileSystemDirectory
FolderEnumerationMode : Unrestricted
```

The share permissions for Share1 are shown in the following table.

Group	Permission
Group1	Allow – Change
Group3	Allow – Full Control



For each of the following statements, select Yes if the statement is true. Otherwise, select No.

NOTE: Each correct selection is worth one point.

Hot Area:

Statements	Yes	No
User1 can read the files in Share1.	<input type="radio"/>	<input type="radio"/>
User3 can delete files in Share1.	<input type="radio"/>	<input type="radio"/>
If User2 connects to \\Server1.adatum.com from File Explorer, Share1 will be listed.	<input type="radio"/>	<input type="radio"/>

Answer Area:

Statements	Yes	No
User1 can read the files in Share1.	<input checked="" type="radio"/>	<input type="radio"/>
User3 can delete files in Share1.	<input type="radio"/>	<input checked="" type="radio"/>
If User2 connects to \\Server1.adatum.com from File Explorer, Share1 will be listed.	<input checked="" type="radio"/>	<input type="radio"/>

Section:

Explanation:

Box 1: Yes

Group1 has Read access to Folder1 and Change access to Share1. Therefore, User1 can read the files in Share1. Box 2: No

Group3 has Full Control access to Share1. However, Group3 has no permissions configured Folder1.

Therefore, User3 cannot access the files in Share1.

Box 3: Yes

Group2 has write permission to Folder1. However, Group2 has no permission on Share1. Therefore, users in Group2 cannot access files in the shared folder. Access Based Enumeration when enabled hides files and folders that users do not have permission to access. However, Access Based Enumeration is not enabled on Share1. This is indicated by the FolderEnumerationMode – Unrestricted setting. Therefore, the share will be visible to User2 even though User2 cannot access the shared folder.

QUESTION 82

HOTSPOT

You have an onpremises DNS server named Server1 that runs Windows Server. Server 1 hosts a DNS zone named fabrikam.com You have an Azure subscription that contains the resources shown in the following table.



Name	Type	Description
Vnet1	Virtual network	Connects to the on-premises network by using a Site-to-Site VPN
VM1	Virtual machine	Runs Windows Server and has the DNS Server role installed
contoso.com	Private DNS zone	Linked to Vnet1
contoso.com	Public DNS zone	Contains the DNS records of all the platform as a service (PaaS) resources

You need to design a solution that will automatically resolve the names of any PaaS resources for which you configure private endpoints in Vnet1.

How should you configure the name resolution? To answer, select the appropriate options in the answer area.

NOTE: Each correct selection is worth one point.

Hot Area:

Answer Area

On Vnet1:

- Configure VM1 to forward requests for the contoso.com zone to the public DNS zone.
- Configure Vnet1 to use a custom DNS server that is set to the Azure-provided DNS at 168.63.129.16.
- Configure VM1 to forward requests for the contoso.com zone to the Azure-provided DNS at 168.63.129.16.

On the on-premises network:

- Configure forwarding for the contoso.com zone to VM1.
- Configure forwarding for the contoso.com zone to the public DNS zone.
- Configure forwarding for the contoso.com zone to the Azure-provided DNS at 168.63.129.16.

Answer Area:

Answer Area

On Vnet1:

- Configure VM1 to forward requests for the contoso.com zone to the public DNS zone.
- Configure Vnet1 to use a custom DNS server that is set to the Azure-provided DNS at 168.63.129.16.
- Configure VM1 to forward requests for the contoso.com zone to the Azure-provided DNS at 168.63.129.16.

On the on-premises network:

- Configure forwarding for the contoso.com zone to VM1.
- Configure forwarding for the contoso.com zone to the public DNS zone.
- Configure forwarding for the contoso.com zone to the Azure-provided DNS at 168.63.129.16.

Section:

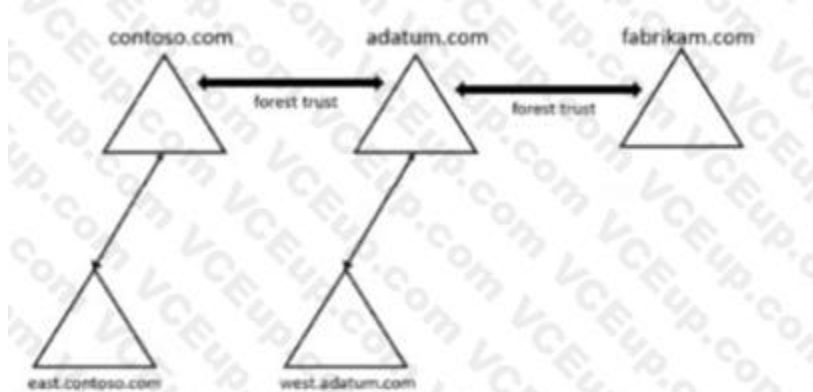
Explanation:



QUESTION 83

HOTSPOT

Your network contains three Active Directory Domain Services (AD DS) forest as shown in the following exhibit.



The network contains the users shown in the following table.

Name	Domain
User1	east.contoso.com
User2	fabrikam.com

The network contains the security groups shown in the following table.

Name	Type	Domain
Group1	Domain local	west.adatum.com
Group2	Universal	contoso.com
Group3	Universal	east.contoso.com

For each of the following statements, select Yes if the statement is true, Otherwise, select No.
NOTE: Each correct selection is worth one point.

Hot Area:

Answer Area

Statements	Yes	No
You can add User1 to Group1.	<input type="checkbox"/>	<input type="checkbox"/>
You can add User2 to Group3.	<input type="checkbox"/>	<input type="checkbox"/>
You can grant Group2 permissions to the resources in the fabrikam.com domain.	<input type="checkbox"/>	<input type="checkbox"/>

Answer Area:

Answer Area

Statements	Yes	No
You can add User1 to Group1.	<input checked="" type="checkbox"/>	<input type="checkbox"/>
You can add User2 to Group3.	<input type="checkbox"/>	<input checked="" type="checkbox"/>
You can grant Group2 permissions to the resources in the fabrikam.com domain.	<input checked="" type="checkbox"/>	<input type="checkbox"/>

Section:

Explanation:

QUESTION 84

DRAG DROP

You create a new Azure subscription.

You plan to deploy Azure Active Directory Domain Services (Azure AD DS) and Azure virtual machines. You need to ensure that the virtual machines can join Azure AD DS.

Which three actions should perform in sequence? To answer, move the appropriate actions from the list of action of the answer area and arrange them in the correct order.

Select and Place:

Actions

- Run the Active Directory Domain Services installation Wizard.
- Create an Azure virtual network.
- Install the Active Directory Domain Services role.
- Install Azure AD Connect.
- Modify the settings of the Azure virtual network.
- Create an Azure AD DS instance.

Answer Area



Correct Answer:

Actions

- Run the Active Directory Domain Services installation Wizard.
- Install the Active Directory Domain Services role.
- Install Azure AD Connect.

Answer Area

- Create an Azure virtual network.
- Create an Azure AD DS instance.
- Modify the settings of the Azure virtual network.



Section:

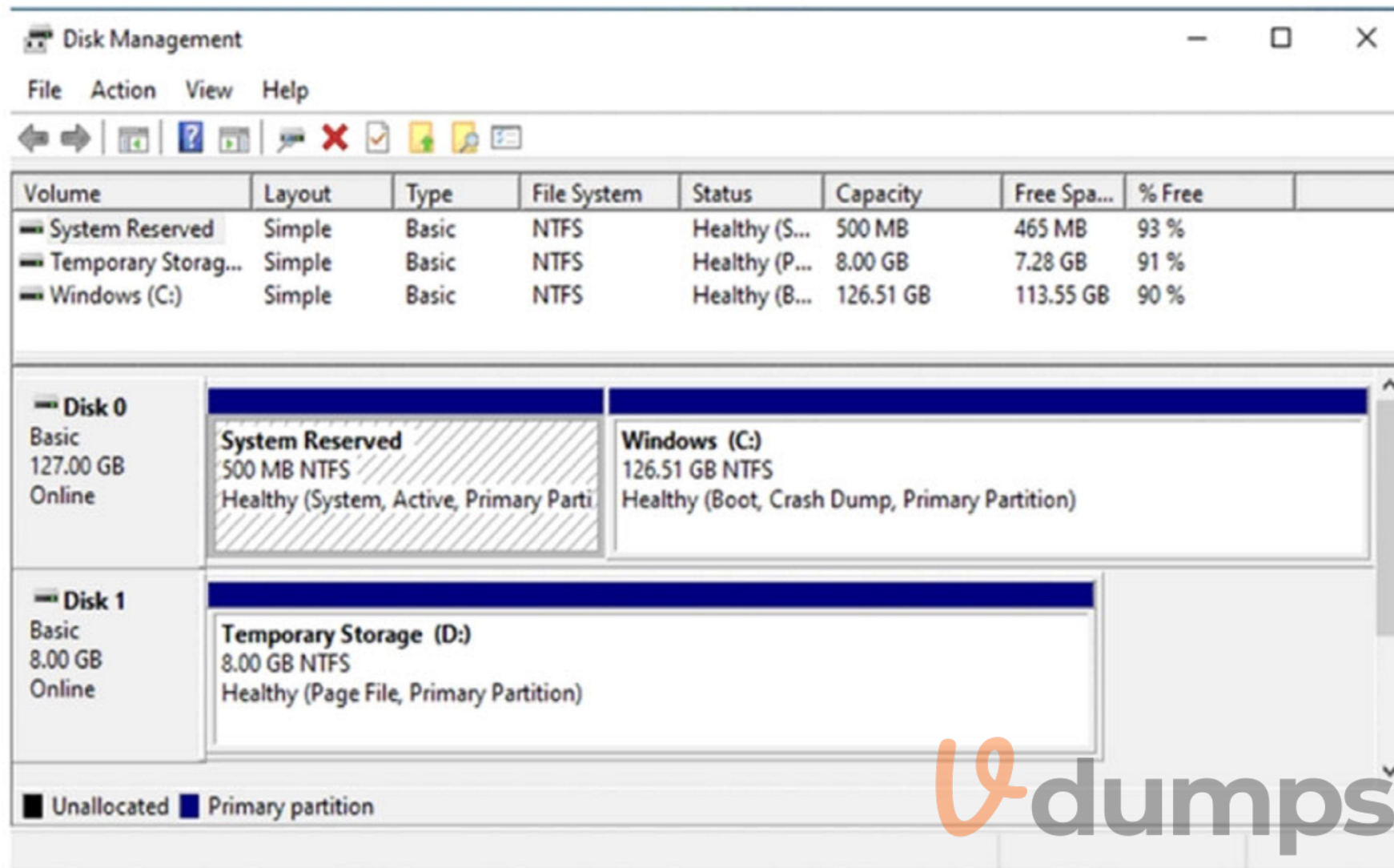
Explanation:

QUESTION 85

DRAG DROP

You create an Azure virtual machine named Server1 that runs Windows Server. Server1 has the disk configuration shown in the following exhibit.





You need to create a new 100-GB volume on Server1.

Which three actions should you perform in sequence? To answer, move the appropriate actions from the list of actions to the answer area and arrange them in the correct order.

Select and Place:

Select and Place:

Actions	Answer Area
Shut down Server1.	
Start Server1.	
Create and attach a new data disk.	
Create a new simple volume.	
Create a new spanned volume.	
Initialize the disk.	

Navigation arrows are present between the Actions and Answer Area columns.

Correct Answer:

Actions

- Shut down Server1.
- Start Server1.
- Create a new spanned volume.

Answer Area

- Create and attach a new data disk.
- Initialize the disk.
- Create a new simple volume.

Section:

Explanation:

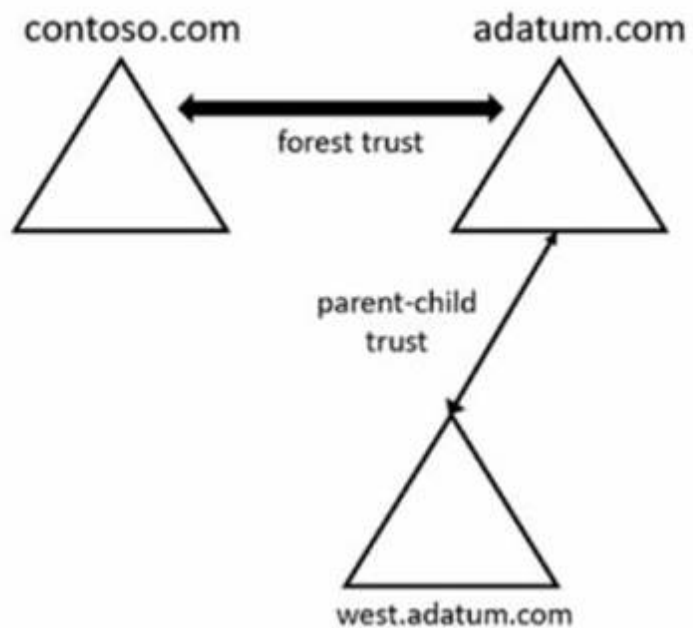
Answer Area

- Start Server1.
- Create and attach a new data disk.
- Shut down Server1.

QUESTION 86

HOTSPOT

Your network contains two Active Directory Domain Services (AD DS) forests as shown in the following exhibit.



The forests contain the domain controllers shown in the following table.

Name	Domain	Global catalog	Schema master
DC1	adatum.com	Yes	Yes
DC2	adatum.com	No	No
DC3	west.adatum.com	Yes	No
DC4	contoso.com	Yes	Yes

You perform the following actions on DO:

- Create a user named User1.
- Extend the schema with a new attribute named Attributed

To which domain controllers are User1 and Attribute1 replicated? To answer, select the appropriate options in the answer area.
NOTE: Each correct selection is worth one point.

Answer Area

User1: DC2 only
DC2 only
DC3 only
DC2 and DC3 only
DC3 and DC4 only
DC2, DC3, and DC4

Attribute1: DC2, DC3, and DC4
DC2 only
DC4 only
DC2 and DC3 only
DC2, DC3, and DC4

Hot Area:

Answer Area

User1: DC2 only
DC2 only
DC3 only
DC2 and DC3 only
DC3 and DC4 only
DC2, DC3, and DC4

Attribute1: DC2, DC3, and DC4
DC2 only
DC4 only
DC2 and DC3 only
DC2, DC3, and DC4

Answer Area:

Answer Area

User1: DC2 only
DC2 only
DC3 only
DC2 and DC3 only
DC3 and DC4 only
DC2, DC3, and DC4

Attribute1: DC2, DC3, and DC4
DC2 only
DC4 only
DC2 and DC3 only
DC2, DC3, and DC4

Section:

Explanation:

QUESTION 87

DRAG DROP

You have an Azure subscription. The subscription contains a virtual machine named VM1 that runs Windows Server. VM1 contains a 128-GB operating system disk.

You need to increase the size of volume C on VM1 to 250 GB.

Which four actions should you perform in sequence? To answer, move the appropriate actions from the list of actions to the answer area and arrange them in the correct order.

Select and Place:

Actions	Answer Area
Resize VM1.	
Redeploy VM1.	
Stop VM1.	
Resize the operating system disk.	
Start VM1.	
Resize volume C.	

Correct Answer:

Actions	Answer Area
Resize VM1.	Stop VM1.
Redeploy VM1.	Resize the operating system disk.
	Start VM1.
	Resize volume C.

Section:

Explanation:

QUESTION 88

HOTSPOT

Your on-premises network contains an Active Directory domain named contoso.com and 500 servers that run Windows Server. All the servers are Azure Arc-enabled and joined to contoso.com.

You need to implement PowerShell Desired State Configuration (DSC) on all the servers. The solution must minimize administrative effort.

Where should you store the DSC scripts, and what should you use to apply DSC to the servers? To answer, select the appropriate options in the answer area.

NOTE: Each correct selection is worth one point.

Hot Area:

Answer Area

Store in:	<ul style="list-style-type: none">An Azure Automation accountAn Azure App Configuration storeAn Azure Automation accountAn Azure Policy definition
Use:	<ul style="list-style-type: none">Guest configuration in Azure PolicyA Group Policy Object (GPO) in Active Directory Domain Services (AD DS)Azure virtual machine extensionsGuest configuration in Azure Policy

Answer Area:

Answer Area

Store in:

- An Azure Automation account
- An Azure App Configuration store
- An Azure Automation account**
- An Azure Policy definition

Use:

- Guest configuration in Azure Policy
- A Group Policy Object (GPO) in Active Directory Domain Services (AD DS)
- Azure virtual machine extensions
- Guest configuration in Azure Policy**

Section:

Explanation:

QUESTION 89

You have an Azure virtual machine named Served that runs a network management application. Server1 has the following network configurations:

- * Network interface: Nic1
- * IP address. 10.1.1.1/24
- * Connected to: VnetVSubnet1

You need to connect Server1 to an additional subnet named Vnet1/Subnet2.

What should you do?

- A. Modify the IP configurations of Nic1.
- B. Add a network interface to Server1.
- C. Add an IP configuration to Nic1.
- D. Create a private endpoint on Subnet2

Correct Answer: D

Section:

QUESTION 90

HOTSPOT

You have a Windows Server 2022 container host named Host1 and a container registry that contains the container images shown in the following table.

Name	Container base image OS version
Image1	Windows Server 2022
Image2	Windows Server 2019

You need to run the containers on Host1

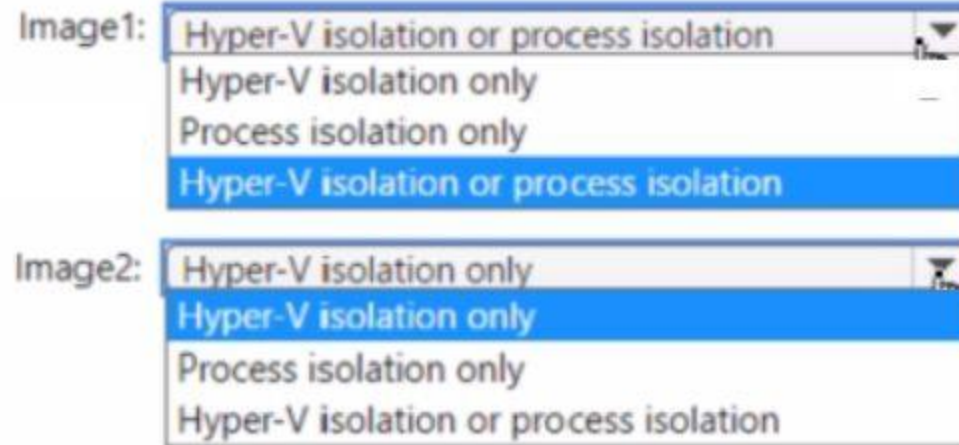
Which isolation mode can you use for each image? To answer, select the appropriate options in the answer area.

NOTE: Each correct selection is worth one point.

Hot Area:

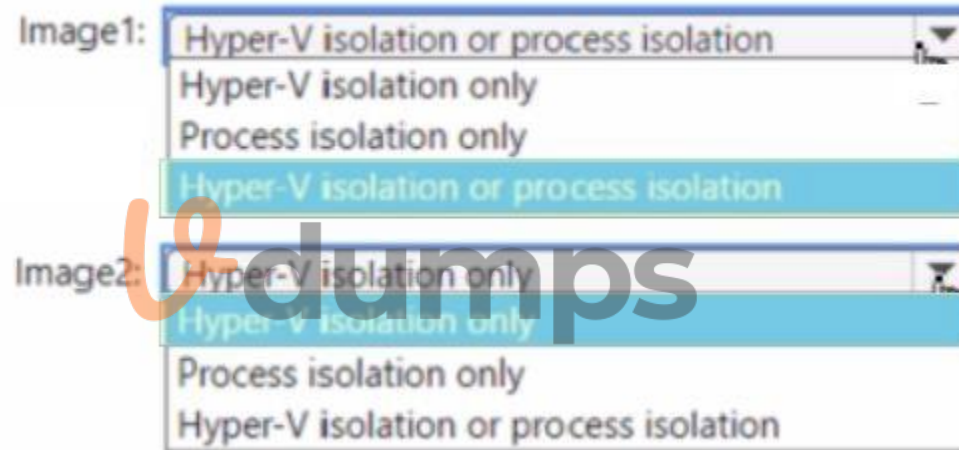


Answer Area



Answer Area:

Answer Area



Section:

Explanation:

QUESTION 91

Your network contains an on-premises Active Directory Domain Services (AD DS) domain named contoso.com. The domain contains three servers that run Windows Server and have the Hyper-V server role installed. Each server has a Switch Embedded Teaming (SET) team.

You need to verify that Remote Direct Memory Access (RDMA) and required Windows Server settings are configured properly on each server to support a failover cluster.

What should you use?

- A. the validate-DCB cmdlet
- B. Server Manager
- C. the Get-NetAdapter cmdlet
- D. Failover Cluster Manager

Correct Answer: A

Section:

QUESTION 92

Your network contains an Active Directory Domain Services (AD DS) domain.
You plan to use Active Directory Administrative Center to create a new user named User1.
Which two attributes are required to create User1? Each correct answer presents part of the solution.
NOTE: Each correct selection is worth one point.

- A. Password
- B. Profile path
- C. User SamAccountName logon
- D. Full name
- E. First name
- F. User UPN logon

Correct Answer: A, C
Section:

QUESTION 93
HOTSPOT

Your on-premises network contains an Active Directory Domain Services (AD DS) domain. The domain contains the servers shown in the following table.
The domain controllers do NOT have internet connectivity.
You plan to implement Azure AD Password Protection for the domain.
You need to deploy Azure AD Password Protection agents. The solution must meet the following requirements:

- * All Azure AD Password Protection policies must be enforced.
- * Agent updates must be applied automatically.
- * Administrative effort must be minimized.

What should you do? To answer select the appropriate options in the answer area.
NOTE: Each correct selection is worth one point.



Hot Area:
Answer Area

Install the Azure AD Password Protection agent on:

DC1 and DC2 only	▼
DC1 only	
DC1 and DC2 only	
DC1, DC2, and RODC1	

Install the Azure AD Password Protection Proxy on:

Server1	▼
DC1	
DC2	
RODC1	
Server1	
Server2	

Answer Area:

Answer Area

Install the Azure AD Password Protection agent on:

DC1 and DC2 only
DC1 only
DC1 and DC2 only
DC1, DC2, and RODC1

Install the Azure AD Password Protection Proxy on:

Server1
DC1
DC2
RODC1
Server1
Server2

Section:

Explanation:

QUESTION 94

You have an Active Directory Domain Services (AD DS) domain. The domain contains a member server named Server1 that runs Windows Server. You need to ensure that you can manage password policies for the domain from Server1. Which command should you run first on Server1?

- A. Install-Windows Feature RSAT-AO-PowerShell
- B. Install-Windows Feature 6PHC
- C. Install-Windows Feature RSAT-AD-Tool\$
- D. Install-windows Feature RSAT-AWIMS

Correct Answer: C

Section:

QUESTION 95

Your network contains an Active Directory forest. The forest contains two domains named contoso.com and east.contoso.com and the servers shown in the following table.

Name	Domain	Configuration
DC1	contoso.com	Domain controller
Server1	contoso.com	Member server
DC2	east.contoso.com	Domain controller
Server2	east.contoso.com	Member server

Contoso.com contains a user named User1.

You add User1 to the built-in Backup Operators group in contoso.com.

Which servers can User1 back up?

- A. DC1 only
- B. Server1 only



- C. DC1 and DC2 only
- D. DC1 and Server1 only
- E. DC1, DC2, Server1, and Server2

Correct Answer: A

Section:

QUESTION 96

Your network contains a DHCP server.

You plan to add a new subnet and deploy Windows Server to the subnet.

You need to use the server as a DHCP relay agent.

Which role should you install on the server?

- A. Network Policy and Access Services
- B. Remote Access
- C. Network Controller
- D. DHCP Server

Correct Answer: B

Section:

QUESTION 97

You have an on-premises server named Server1 that runs Windows Server.

You have an Azure subscription that contains a virtual network named VNet1.

You need to connect Server1 to VNet1 by using Azure Network Adapter.

What should you use?

- A. Azure AD Connect
- B. Device Manager
- C. the Azure portal
- D. Windows Admin Center

Correct Answer: D

Section:

QUESTION 98

You have an Azure virtual machine named VM1 that runs Windows Server.

You need to ensure that administrators request access to VM1 before establishing a Remote Desktop connection.

What should you configure?

- A. Azure Front Door
- B. Microsoft Defender for Cloud
- C. Azure AD Privileged Identity Management (PIM)
- D. a network security group (NSG)

Correct Answer: B

Section:



QUESTION 99

DRAG DROP

You have an on-premises server named Server 1 that runs Windows Server. Server 1 contains a file share named Share 1.

You have an Azure subscription.

You perform the following actions:

- * Deploy Azure File Sync
- * Install the Azure File Sync agent on Server1.
- * Register Server1 with Azure File Sync

You need to ensure that you can add Share1 as an Azure File Sync server endpoint.

Which three actions should you perform in sequence? To answer, move the appropriate actions from the list of actions to the answer area and arrange them in the correct order.

Select and Place:

Actions	Answer Area
Deploy the Azure Connected Machine agent.	
Deploy an Azure VPN gateway.	
Create a private endpoint.	
Create an Azure Storage account.	
Create an Azure file share.	
Create a sync group.	

Correct Answer:

Actions	Answer Area
Deploy the Azure Connected Machine agent.	Create an Azure Storage account.
Deploy an Azure VPN gateway.	Create an Azure file share.
Create a private endpoint.	Create a sync group.

Section:

Explanation:

Create an Azure Storage account.

Create an Azure file share.

Create a sync group.

QUESTION 100

HOTSPOT

You have an Active Directory Domain Services (AD DS) domain that contains the member servers shown in the following table.

Name	Operating system	Data Deduplication role service
Server1	Windows Server 2019	Installed
Server2	Windows Server 2022	Not installed
Server3	Windows Server 2022	Installed

Server3 contains a data disk named Disk1 that has Data Deduplication installed. Disk1 contains the files shown in the following table.

Name	Size
File1.txt	5 KB
File2.docx	800 KB
File3.sys	2 MB
File4.bmp	5 GB

Server3 fails.

You need to recover the files on Disk1.

Which files can you recover if you attach Disk1 to Server 1, and which files can you recover if you attach Disk1 to Server2? To answer, select the appropriate options in the answer area.

NOTE: Each correct selection is worth one point.

Hot Area:

Answer Area



Server1:


- File1.txt only
- File1.txt and File2.docx only
- File1.txt and File3.sys only
- File1.txt, File2.docx, File3.sys, and File4.bmp
- No files can be recovered.


Server2:

- File1.txt only
- File1.txt and File2.docx only
- File1.txt and File3.sys only
- File1.txt, File2.docx, File3.sys, and File4.bmp
- No files can be recovered.

Answer Area:

Answer Area

Server1: 
File1.txt only
File1.txt and File2.docx only
File1.txt and File3.sys only
File1.txt, File2.docx, File3.sys, and File4.bmp
No files can be recovered.

Server2: 
File1.txt only
File1.txt and File2.docx only
File1.txt and File3.sys only
File1.txt, File2.docx, File3.sys, and File4.bmp
No files can be recovered.

Section:

Explanation:

QUESTION 101

DRAG DROP

You have a disaggregated cluster deployment. The deployment contains a scale-out file server (SOFS) cluster that runs Windows Server and a compute cluster that has the Hyper-V role enabled.

You need to implement Storage Quality of Service (QoS). The solution must ensure that you can control the bandwidth usage between the SOFS cluster and the Hyper-V cluster.

Which cmdlet should you run on each cluster? To answer, drag the appropriate cmdlets to the correct clusters. Each cmdlet may be used once, more than once, or not at all. You may need to drag the split bar between panes or scroll to view content.

NOTE: Each correct selection is worth one point.

Cmdlets

New-StorageQosPolicy

Set-VMHardDiskDrive

Set-VMsan

Answer Area

SOFS:

Hyper-V:

Answer:

Cmdlets

- New-StorageQosPolicy
- Set-VMHardDiskDrive
- Set-VMsan

Answer AreaSOFS: Hyper-V: **Select and Place:****Cmdlets**

- New-StorageQosPolicy
- Set-VMHardDiskDrive
- Set-VMsan

Answer AreaSOFS: Hyper-V: **Correct Answer:****Cmdlets**

-
-
- Set-VMsan

Answer AreaSOFS: Hyper-V: **Section:****Explanation:****QUESTION 102**

You have a server named Server1 that runs Windows Server and contains a file share named Share1.

You need to prevent users from stoning MP4 files in Share1. The solution must ensure that the users can store other types of files in the share.

What should you configure on Server1?

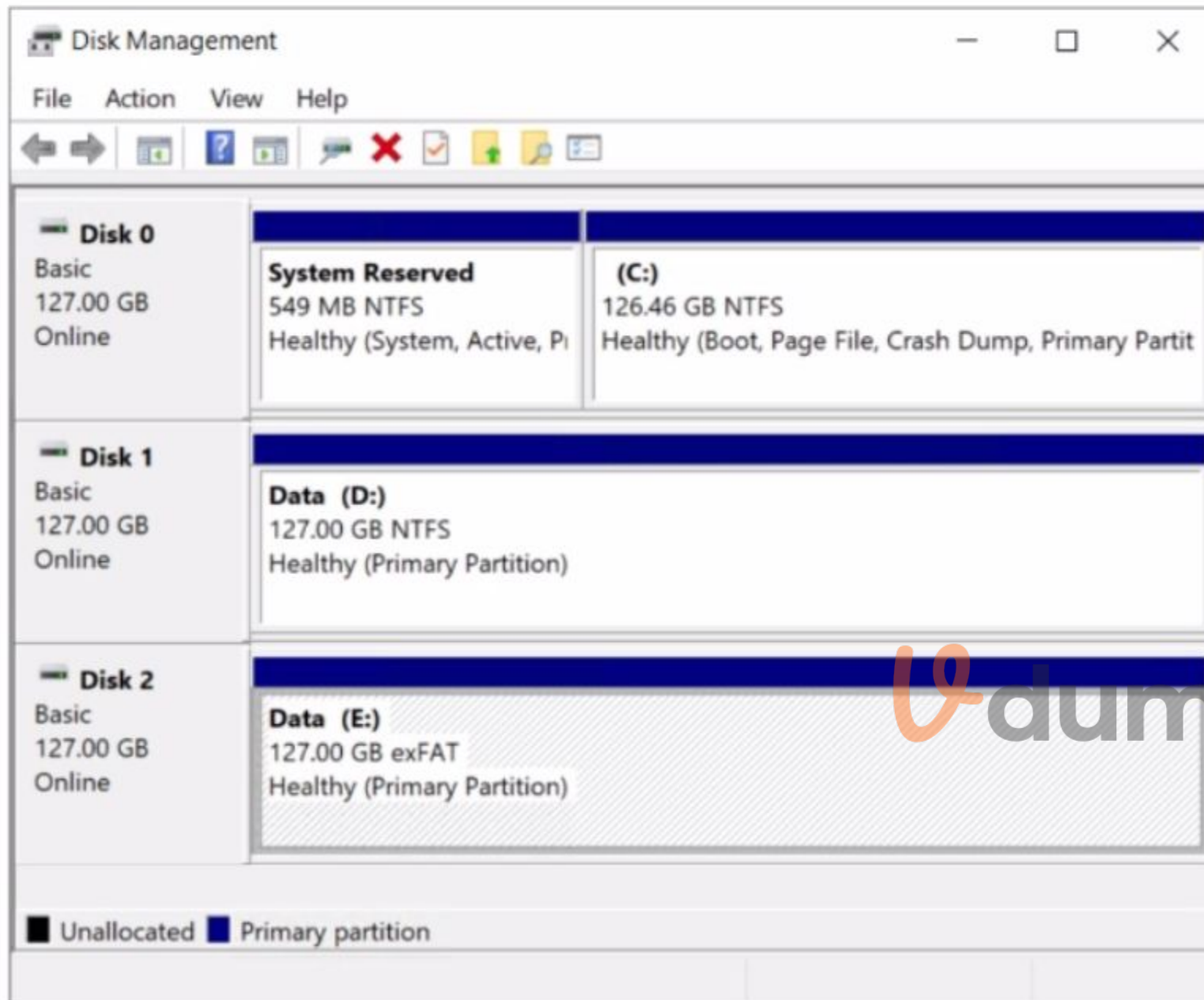
- A. File Management Tasks
- B. NTFS Quotas
- C. NTFS permissions
- D. file screens

Correct Answer: D

Section:

QUESTION 103

You have a server named Server1 that runs Windows Server. The disks on Server1 are configured as shown in the following exhibit.



You need to convert volume E to ReFS. The solution must meet the following requirements:

- * Preserve the existing data on volume E.
- * Minimize administrative effort.

What should you do first?

- A. Take Disk 2 offline.
- B. Back up the data on volume E.
- C. Convert Disk 2 to a dynamic disk.
- D. Runconvert.exe.

Correct Answer: B

Section:

QUESTION 104

SIMULATION LAB 1

You need to prevent domain users from saving executable files in a share named \\SRVI\Data. The users must be able to save other files to the share.

A. See the solution of this Task below

Correct Answer: A

Section:

Explanation:

One possible solution to prevent domain users from saving executable files in a share named \\SRVI\Data is to use file screening on the file server. File screening allows you to block certain files from being saved based on their file name extension. Here are the steps to configure file screening:

On the file server, open File Server Resource Manager from the Administrative Tools menu.

In the left pane, expand File Screening Management and click on File Groups.

Right-click on File Groups and select Create File Group.

In the File Group Properties dialog box, enter a name for the file group, such as Executable Files.

In the Files to include box, enter the file name extensions that you want to block, such as .exe, .bat, .cmd, .com, .msi, .scr. You can use wildcards to specify multiple extensions, such as *.exe.

Click OK to create the file group.

In the left pane, click on File Screen Templates.

Right-click on File Screen Templates and select Create File Screen Template.

In the File Screen Template Properties dialog box, enter a name for the template, such as Block Executable Files.

On the Setting tab, select the option Active screening: Do not allow users to save unauthorized files.

On the File Group tab, check the box next to the file group that you created, such as Executable Files.

On the Notification tab, you can configure how to notify users and administrators when a file screening event occurs, such as sending an email, logging an event, or running a command or script. You can also customize the message that users see when they try to save a blocked file.

Click OK to create the file screen template.

In the left pane, click on File Screens.

Right-click on File Screens and select Create File Screen.

In the Create File Screen dialog box, enter the path of the folder that you want to apply the file screening to, such as \\SRVI\Data.

Select the option Derive properties from this file screen template (recommended) and choose the template that you created, such as Block Executable Files.

Click Create to create the file screen.

Now, domain users will not be able to save executable files in the share named \\SRVI\Data. They will be able to save other files to the share.

QUESTION 105

SIMULATION LAB 2

You need to ensure that the Azure file share named share1 can sync to on-premises servers.

The required source files are located in a folder named \\dc1.contoso.com\install.

You do NOT need to specify the on-premises servers at this time.

A. See the solution of this Task below

Correct Answer: A

Section:

Explanation:

One possible solution to ensure that the Azure file share named share1 can sync to on-premises servers is to use Azure File Sync. Azure File Sync allows you to centralize your file shares in Azure Files without giving up the flexibility, performance, and compatibility of an on-premises file server. It does this by transforming your Windows Servers into a quick cache of your Azure file share. You can use any protocol available on Windows Server to access your data locally (including SMB, NFS, and FTPS) and you can have as many caches as you need across the world.

Here are the steps to configure Azure File Sync for the Azure file share named share1 and the source files located in a folder named \\dc1.contoso.com\install:

On the Azure portal, create a Storage Sync Service in the same region as your storage account that contains the Azure file share named share1. For more information on how to create a Storage Sync Service, see [How to deploy Azure File Sync](#).

On the on-premises server that hosts the folder named \\dc1.contoso.com\install, install the Azure File Sync agent. For more information on how to install the Azure File Sync agent, see [Install the Azure File Sync agent](#).

On the on-premises server, register the server with the Storage Sync Service that you created in the first step. For more information on how to register a server with a Storage Sync Service, see [Register/unregister a server with](#)

Storage Sync Service.

On the Azure portal, create a sync group that defines the sync topology for a set of files. In the sync group, select the Azure file share named share1 as the cloud endpoint and the folder named \\dc1.contoso.com\install as the server endpoint. For more information on how to create a sync group, see [Create a sync group and a cloud endpoint](#) and [Create a server endpoint](#).

Wait for the initial sync to complete. You can monitor the sync progress on the Azure portal or on the on-premises server. For more information on how to monitor sync progress, see [\[Monitor sync progress\]](#).

Once the initial sync is complete, you can add more on-premises servers to the same sync group to sync and cache the content locally. You can also enable cloud tiering to optimize the storage space on the on-premises servers by tiering infrequently accessed or older files to Azure Files.

QUESTION 106

SIMULATION LAB 3

You need to configure SRV1 as a DNS server. SRV1 must be able to resolve names from the contoso.com domain by using DC1. All other names must be resolved by using the root hint servers.

A. See the solution of this Task below

Correct Answer: A

Section:

Explanation:

One possible solution to configure SRV1 as a DNS server that can resolve names from the contoso.com domain by using DC1 and all other names by using the root hint servers is to use conditional forwarding. Conditional forwarding allows a DNS server to forward queries for a specific domain name to another DNS server, while using the normal forwarding or root hint servers for other queries. Here are the steps to configure conditional forwarding on SRV1:

On SRV1, open DNS Manager from the Administrative Tools menu or by typing `dnsmgmt.msc` in the Run box.

In the left pane, right-click on Conditional Forwarders and select New Conditional Forwarder.

In the New Conditional Forwarder dialog box, enter contoso.com as the DNS Domain name.

In the IP addresses of the master servers box, enter the IP address of DC1, which is the DNS server for the contoso.com domain. You can also click on Resolve to verify the name resolution of DC1.

Optionally, you can check the box Store this conditional forwarder in Active Directory, and replicate it as follows if you want to store and replicate the conditional forwarder in AD DS. You can also select the replication scope from the drop-down list.

Click OK to create the conditional forwarder.

Now, SRV1 will forward any queries for the contoso.com domain to DC1, and use the root hint servers for any other queries. You can test the name resolution by using the `nslookup` command on SRV1 or another computer that uses SRV1 as its DNS server. For example, you can run the following commands:

```
nslookup www.contoso.com
```

```
nslookup www.microsoft.com
```

The first command should return the IP address of www.contoso.com from DC1, and the second command should return the IP address of www.microsoft.com from a root hint server.

QUESTION 107

SIMULATION LAB 4

You need to register SRV1 to sync Azure file shares. The registration must use the 34646045 Storage Sync Service.

The required source files are located in a folder named \\dc1.contoso.com\install.

You do NOT need to configure file share synchronization at this time and you do NOT need to update the agent.

A. See the solution of this Task below

Correct Answer: A

Section:

Explanation:

One possible solution to register SRV1 to sync Azure file shares using the 34646045 Storage Sync Service is to use the Register-AzStorageSyncServer cmdlet from the Az.StorageSync module. This cmdlet establishes a trust relationship between the server and the Storage Sync Service, which is required for creating server endpoints and syncing files. Here are the steps to register SRV1 using the cmdlet:

On SRV1, open PowerShell as an administrator and run the following command to install the Az.StorageSync module if it is not already installed:

```
Install-Module -Name Az.StorageSync
```

Run the following command to import the Az.StorageSync module:

```
Import-Module -Name Az.StorageSync
```

Run the following command to sign in to your Azure account and select the subscription that contains the 34646045 Storage Sync Service:

Connect-AzAccount

Select-AzSubscription -SubscriptionId <your-subscription-id>

Run the following command to register SRV1 with the 34646045 Storage Sync Service. You need to specify the resource group name and the Storage Sync Service name as parameters:

Register-AzStorageSyncServer -ResourceGroupName <your-resource-group-name> -StorageSyncServiceName 34646045

Wait for the registration to complete. You can verify the registration status by checking the Registered servers tab on the Azure portal or by running the following command:

Get-AzStorageSyncServer -ResourceGroupName <your-resource-group-name> -StorageSyncServiceName 34646045

Now, SRV1 is registered with the 34646045 Storage Sync Service and ready to sync Azure file shares. You can create server endpoints on SRV1 and cloud endpoints on the Azure file shares to define the sync topology.

QUESTION 108

SIMULATION LAB 5

You need to ensure that a DHCP scope named scope1 on SRV1 can service client requests.

A. See the solution of this Task below

Correct Answer: A

Section:

Explanation:

One possible solution to ensure that a DHCP scope named scope1 on SRV1 can service client requests is to activate the scope on the DHCP server. A scope must be activated before it can assign IP addresses to DHCP clients.

To activate a DHCP scope on SRV1, perform the following steps:

On SRV1, open DNS Manager from the Administrative Tools menu or by typing dnsmgmt.msc in the Run box.

In the left pane, expand your DHCP server and click on IPv4.

In the right pane, right-click on the scope that you want to activate, such as scope1, and select Activate.

Wait for the scope to be activated. You can verify the activation status by checking the icon next to the scope name. A green arrow indicates that the scope is active, while a red arrow indicates that the scope is inactive.

Now, the DHCP scope named scope1 on SRV1 can service client requests and lease IP addresses to DHCP clients. You can test the DHCP service by using the ipconfig /renew command on a DHCP client computer that is connected to the same subnet as the scope.

QUESTION 109

SIMULATION LAB 6

You need to ensure that you can manage DC1 by using Windows Admin Center on SRV1.

file://dc1.contoso.com/install The required source files are located in a folder named \\dc1.contoso.com\install.

A. See the solution of this Task below

Correct Answer: A

Section:

Explanation:

One possible solution to ensure that you can manage DC1 by using Windows Admin Center on SRV1 is to install Windows Admin Center on SRV1 and add DC1 as a managed server. Windows Admin Center is a web-based management tool that allows you to manage servers, clusters, Windows PCs, and Azure virtual machines (VMs) from a single interface. Here are the steps to install Windows Admin Center on SRV1 and add DC1 as a managed server:

On SRV1, open a web browser and go to the folder named \\dc1.contoso.com\install. Download the Windows Admin Center installer file (WindowsAdminCenter.msi) and save it to a local folder, such as C:\Temp.

Run the Windows Admin Center installer file and follow the installation wizard. You can choose to install Windows Admin Center as a desktop app or as a service. For more information on how to install Windows Admin Center, see [Install Windows Admin Center](#).

After the installation is complete, launch Windows Admin Center from the Start menu or the desktop shortcut. If you installed Windows Admin Center as a service, you can access it from a web browser by using the URL <https://localhost:6516> or <https://<SRV1>:6516>, where <SRV1> is the name or IP address of SRV1.

On the Windows Admin Center dashboard, click Add to add a new connection. Select Server as the connection type and enter the name or IP address of DC1 in the Server name field. Optionally, you can specify the display name, description, and tags for the connection. Click Submit to add DC1 as a managed server.

On the Windows Admin Center dashboard, you should see DC1 listed under the Servers section. Click on DC1 to open the server overview page. From here, you can manage various aspects of DC1, such as roles and features, certificates, devices, events, files, firewall, processes, registry, services, and more. For more information on how to use Windows Admin Center to manage servers, see [Manage servers with Windows Admin Center](#).

Now, you can manage DC1 by using Windows Admin Center on SRV1. You can also add more servers or other types of connections to Windows Admin Center and manage them from the same interface

QUESTION 110

SIMULATION LAB 7

You need to monitor the security configuration of DC1 by using Microsoft Defender for Cloud.

file://dc1.contoso.com/install The required source files are located in a folder named \\dc1.contoso.com\install.

A. See the solution of this Task below

Correct Answer: A

Section:

Explanation:

One possible solution to monitor the security configuration of DC1 by using Microsoft Defender for Cloud is to use the Guest Configuration feature. Guest Configuration is a service that audits settings inside Linux and Windows virtual machines (VMs) to assess their compliance with your organization's security policies. You can use Guest Configuration to monitor the security baseline settings for Windows Server in the Microsoft Defender for Cloud portal by following these steps:

On DC1, open a web browser and go to the folder named \\dc1.contoso.com\install. Download the Guest Configuration extension file (GuestConfiguration.msi) and save it to a local folder, such as C:\Temp.

Run the Guest Configuration extension file and follow the installation wizard. You can choose to install the extension for all users or only for the current user. For more information on how to install the Guest Configuration extension, see [Install the Guest Configuration extension](#).

After the installation is complete, sign in to the Microsoft Defender for Cloud portal (2).

In the left pane, select **Security Center** and then **Recommendations**.

In the recommendations list, find and select **Vulnerabilities in security configuration on your Windows machines should be remediated (powered by Guest Configuration)**.

In the **Remediate Security Configurations** page, you can see the compliance status of your Windows VMs, including DC1, based on the Azure Compute Benchmark. The Azure Compute Benchmark is a set of rules that define the desired configuration state of your VMs. You can also see the number of failed, passed, and skipped rules for each VM. For more information on the Azure Compute Benchmark, see [Microsoft cloud security benchmark: Azure compute benchmark is now available](#).

To view the details of the security configuration of DC1, click on the VM name and then select **View details**. You can see the list of rules that apply to DC1 and their compliance status. You can also see the severity, description, and remediation steps for each rule. For example, you can see if DC1 has the latest security updates installed, if the firewall is enabled, if the password policy is enforced, and so on.

To monitor the security configuration of DC1 over time, you can use the **Compliance over time** chart, which shows the trend of compliance status for DC1 in the past 30 days. You can also use the **Compliance breakdown** chart, which shows the distribution of compliance status for DC1 by rule severity.

By using Guest Configuration, you can monitor the security configuration of DC1 by using Microsoft Defender for Cloud and ensure that it meets your organization's security standards. You can also use Guest Configuration to monitor the security configuration of other Windows and Linux VMs in your Azure environment.

QUESTION 111

SIMULATION LAB 8

You need to create an Active Directory Domain Services (AD DS) site named Site2 that is associated to an IP address range of 192.168.2.0 to 192.168.2.255.

A. See the solution of this Task below

Correct Answer: A

Section:

Explanation:

To create an AD DS site named Site2 that is associated to an IP address range of 192.168.2.0 to 192.168.2.255, you can follow these steps:

On a domain controller or a computer that has the Remote Server Administration Tools (RSAT) installed, open **Active Directory Sites and Services** from the **Administrative Tools** menu or by typing `gdssite.msc` in the Run box.

In the left pane, right-click on **Sites** and select **New Site**.

In the **New Object - Site** dialog box, enter `Site2` as the **Name** of the new site. Select a site link to associate the new site with, such as `DEFAULTIPSITELINK`, and click **OK**. You can also create a new site link if you want to customize the replication frequency and schedule between the sites. For more information on how to create a site link, see [Create a Site Link](#).

In the left pane, right-click on **Subnets** and select **New Subnet**.

In the **New Object - Subnet** dialog box, enter `192.168.2.0/24` as the **Prefix** of the subnet. This notation represents the IP address range of 192.168.2.0 to 192.168.2.255 with a subnet mask of 255.255.255.0. Select `Site2` as the **Site** object to associate the subnet with, and click **OK**.

Wait for the changes to replicate to other domain controllers. You can verify the site and subnet creation by checking the **Sites and Subnets** containers in **Active Directory Sites and Services**.

Now, you have created an AD DS site named Site2 that is associated to an IP address range of 192.168.2.0 to 192.168.2.255. You can add domain controllers to the new site and configure the site links and site link bridges to optimize the replication topology.

QUESTION 112

SIMULATION LAB 9

You plan to create group managed service accounts (gMSAs).

You need to configure the domain to support the creation of gMSAs.

A. See the solution of this Task below

Correct Answer: A

Section:

Explanation:

To configure the domain to support the creation of gMSAs, you need to perform the following steps:

On a domain controller or a computer that has the Remote Server Administration Tools (RSAT) installed, open PowerShell as an administrator and run the following command to install the Active Directory module:

```
Install-WindowsFeature -Name RSAT-AD-PowerShell
```

Run the following command to create a Key Distribution Service (KDS) root key, which is required for generating passwords for gMSAs. You only need to do this once per domain:

```
Add-KdsRootKey -EffectiveImmediately
```

Wait for at least 10 hours for the KDS root key to replicate to all domain controllers in the domain. Alternatively, you can use the-EffectiveTimeparameter to specify a past date and time for the KDS root key, but this is not recommended for security reasons. For more information, seeAdd-KdsRootKey.

After the KDS root key is replicated, you can create and configure gMSAs using theNew-ADServiceAccountandSet-ADServiceAccountcmdlets. For more information, seeCreate a gMSAandConfigure a gMSA.

QUESTION 113

SIMULATION LAB 10

You need to configure Hyper-V to ensure that running virtual machines can be moved between SRV1 and SRV2 without downtime.

You do NOT need to move any virtual machines at this time.

A. See the solution of this Task below

Correct Answer: A

Section:

Explanation:

One possible solution to configure Hyper-V to ensure that running virtual machines can be moved between SRV1 and SRV2 without downtime is to use Live Migration. Live Migration is a feature of Hyper-V that allows you to move a running virtual machine from one host to another without any noticeable interruption of service. To set up Live Migration between SRV1 and SRV2, you need to perform the following steps:

On both SRV1 and SRV2, openHyper-V Managerfrom theAdministrative Toolsmenu or by typingvirtmgmt.mscin the Run box.

In the left pane, right-click on the name of the server and selectHyper-V Settings.

In theHyper-V Settingsdialog box, selectLive Migrationin the navigation pane.

Check the boxEnable incoming and outgoing live migrations.

UnderAuthentication protocol, select the method that you want to use to authenticate the live migration traffic between the servers. You can choose eitherKerberosorCredSSP. Kerberos does not require you to sign in to the source server before starting a live migration, but it requires you to configure constrained delegation on the domain controller. CredSSP does not require you to configure constrained delegation, but it requires you to sign in to the source server through a local console session, a Remote Desktop session, or a remote Windows PowerShell session. For more information on how to configure constrained delegation, seeConfigure constrained delegation.

UnderPerformance options, select the option that best suits your network configuration and performance requirements. You can choose eitherTCP/IPorCompressionorSMB. TCP/IP uses a single TCP connection for the live migration traffic. Compression uses multiple TCP connections and compresses the live migration traffic to reduce the migration time and network bandwidth usage. SMB uses the Server Message Block (SMB) 3.0 protocol and can leverage SMB features such as SMB Multichannel and SMB Direct. For more information on how to choose the best performance option, seeChoose a live migration performance option.

UnderAdvanced Features, you can optionally enable theUse any available network for live migrationoption, which allows Hyper-V to use any available network adapter on the source and destination servers for live migration. If you do not enable this option, you need to specify one or more network adapters to be used for live migration by clicking on theAddbutton and selecting the network adapter from the list. You can also change the order of preference by using theMove UpandMove Downbuttons.

ClickOKto apply the settings.

Now, you have configured Hyper-V to enable live migration between SRV1 and SRV2. You can use Hyper-V Manager or Windows PowerShell to initiate a live migration of a running virtual machine from one server to another.

QUESTION 114

SIMULATION LAB 11



You need to ensure that all DHCP clients that get an IP address from SRV1 will be configured to use DC1 as a DNS server.

A. See the solution of this Task below

Correct Answer: A

Section:

Explanation:

One possible solution to ensure that all DHCP clients that get an IP address from SRV1 will be configured to use DC1 as a DNS server is to use the DHCP scope options. DHCP scope options are settings that apply to all DHCP clients that obtain an IP address from a specific scope. You can use the DHCP scope options to specify the DNS server IP address, as well as other parameters such as the default gateway, the domain name, and the DNS suffix. Here are the steps to configure the DHCP scope options on SRV1:

On SRV1, open DNS Manager from the Administrative Tools menu or by typing `dnsmgmt.msc` in the Run box.

In the left pane, expand your DHCP server and click on IPv4.

In the right pane, right-click on the scope that you want to configure and select Properties.

In the Scope Properties dialog box, click on the DNS tab.

Check the box **Enable DNS dynamic updates** according to the settings below. This option allows the DHCP server to register and update the DNS records for the DHCP clients.

Select the option **Always dynamically update DNS records**. This option ensures that the DHCP server updates both the A and PTR records for the DHCP clients, regardless of whether they request or support dynamic updates.

Check the box **Discard A and PTR records when lease is deleted**. This option allows the DHCP server to delete the DNS records for the DHCP clients when their leases expire or are released.

Check the box **Dynamically update DNS records for DHCP clients that do not request updates**. This option allows the DHCP server to update the DNS records for the DHCP clients that do not support dynamic updates, such as legacy or non-Windows clients.

In the DNS servers section, click on the Add button to add a new DNS server IP address.

In the Add Server dialog box, enter the IP address of DC1, which is the DNS server that you want to use for the DHCP clients, and click Add.

Click OK to close the Add Server dialog box and return to the Scope Properties dialog box.

Click OK to apply the changes and close the Scope Properties dialog box.

Now, all DHCP clients that get an IP address from SRV1 will be configured to use DC1 as a DNS server. You can verify the DNS configuration by using the `ipconfig /all` command on a DHCP client computer and checking the DNS Servers entry. You can also check the DNS records for the DHCP clients by using the DNS Manager console on DC1.

QUESTION 115

You have an Azure subscription. The subscription contains a virtual machine named VM1 that runs Windows Server. You plan to manage VM1 by using a PowerShell runbook.

You need to create the runbook. What should you create first?

- A. an Azure workbook
- B. a Microsoft Power Automate flow
- C. a Log Analytics workspace
- D. an Azure Automation account

Correct Answer: D

Section:

QUESTION 116

HOTSPOT

Your on-premises network contains an Active Directory Domain Services (AD DS) domain.

You plan to sync the domain with a Microsoft Entra tenant by using Microsoft Entra Connect cloud sync.

You need to meet the following requirements:

* Install the software required to sync the domain and Microsoft Entra ID.

* Enable password hash synchronization.

What should you install, and what should you use to enable password hash synchronization? To answer, select the appropriate options in the answer area.

Hot Area:

Answer Area

Install: Microsoft Entra Connect
Active Directory Administrative Center
Microsoft Entra Connect
The AD FS Management console
The Microsoft Entra Connect provisioning agent

Use: The Azure portal
Active Directory Administrative Center
Microsoft Entra Connect
The AD FS Management console
The Azure portal

Answer Area:
Answer Area

Install: Microsoft Entra Connect
Active Directory Administrative Center
Microsoft Entra Connect
The AD FS Management console
The Microsoft Entra Connect provisioning agent

Use: The Azure portal
Active Directory Administrative Center
Microsoft Entra Connect
The AD FS Management console
The Azure portal

Section:
Explanation:

QUESTION 117
HOTSPOT

Your network contains an Active Directory Domain Services (AD DS) domain named contoso.com. The domain contains the users shown in the following table.

Name	Located in
User1	Contoso\Users
User2	Contoso\OU1
User3	Contoso\OU1\OU2

The domain has the Group Policy Objects (GPOs) shown in the following table.

Name	Linked to	Enforcement
GPO1	Contoso.com	Enforce is enabled for the GPO link.
GPO2	OU1	None
GPO3	OU2	Block inheritance is enabled for OU2.

The GPOs are configured to map a drive named H as shown in the following table.

Name	Configuration
GPO1	Drive H maps to \\server1\share.
GPO2	Drive H maps to \\server2\share.
GPO3	Drive H maps to \\server3\share.

For each of the following statements, select Yes if the statement is true. Otherwise, select No.
NOTE: Each correct selection is worth one point.

Hot Area:

Answer Area

Statements	Yes	No
For User1, \\server2\share maps to drive H.	<input type="radio"/>	<input type="radio"/>
For User2 \\server1\share maps to drive H.	<input type="radio"/>	<input type="radio"/>
For User3, \\server3\share maps to drive H.	<input type="radio"/>	<input type="radio"/>

Answer Area:

Answer Area

Statements	Yes	No
For User1, \\server2\share maps to drive H.	<input type="radio"/>	<input checked="" type="radio"/>
For User2 \\server1\share maps to drive H.	<input checked="" type="radio"/>	<input type="radio"/>
For User3, \\server3\share maps to drive H.	<input checked="" type="radio"/>	<input type="radio"/>

Section:

Explanation: