

Microsoft.AZ-800.vSep-2024.by.WuanDo.120q

Number: AZ-800
Passing Score: 800
Time Limit: 120
File Version: 22.0

Exam Code: AZ-800
Exam Name: Administering Windows Server Hybrid Core Infrastructure



Case

This is a case study. Case studies are not timed separately. You can use as much exam time as you would like to complete each case. However, there may be additional case studies and sections on this exam. You must manage your time to ensure that you are able to complete all questions included on this exam in the time provided.

To answer the questions included in a case study, you will need to reference information that is provided in the case study. Case studies might contain exhibits and other resources that provide more information about the scenario that is described in the case study. Each question is independent of the other questions in this case study.

At the end of this case study, a review screen will appear. This screen allows you to review your answers and to make changes before you move to the next section of the exam. After you begin a new section, you cannot return to this section.

To start the case study

To display the first question in this case study, click the Next button. Use the buttons in the left pane to explore the content of the case study before you answer the questions. Clicking these buttons displays information such as business requirements, existing environment, and problem statements, if the case study has an All Information tab. Note that the information displayed is identical to the information displayed on the subsequent tabs.

When you are ready to answer a question, click the

Qbutton to return to the question.

Overview

Fabrikam, Inc. is a manufacturing company that has a main office in New York and a branch office in Seattle.

On-premises Servers

The on-premises network contains servers that run Windows Server as shown in the following table.

Name	Configuration	Office
AADC1	Azure AD Connect	New York
APP1	Application server	New York
APP2	Application server	Seattle
DC1	Domain controller	New York
DC2	Domain controller	Seattle
DHCP1	DHCP server	New York
DHCP2	DHCP server	Seattle
FS1	File server	New York
FS2	File server	Seattle
VM1	None	New York
VM2	None	Seattle
WEB1	Web server	New York
WEB2	Web server	Seattle

DC1 hosts all the operation master roles.

WEB1 and WEB2 run an Internet Information Services (IIS) web app named Webapp1.

On-premises Network

The New York and Seattle offices are connected by using redundant WAN links.

The client computers in each office get IP addresses from their local DHCP server.

DHCP1 contains a scope named Scope1 that has addresses for the New York office. DHCP2 contains a scope named Scope2 that has addresses for the Seattle office.

Group Policy Object (GPOs)

The cwp.fabrikam.com domain contains the organizational units (OUs) and custom Group Policy Objects (GPOs) shown in the following table.



OU name	Linked GPO	Description
AllUsers	GPO1	Contains all the user accounts in the domain
AllComputers	GPO2	Contains all the computer accounts for the client computers in the domain
AllServers	GPO3	Contains all the computer accounts for Windows servers
VirtualDesktops	GPO4	A new OU that will contain the computers account for Azure Virtual Desktop session hosts

Requirements:

Fabrikam identifies the following planned changes:

- Create a single Azure subscription named Sub1 that will contain a single Azure virtual network named Vnet1.
- Replace the WAN links between the Seattle and New York offices by using Azure Virtual WAN and ExpressRoute. Both on-premises offices will be connected to Vnet1 by using ExpressRoute.
- Create three Azure file shares named newyorkfiles, seattlefiles, and companyfiles.
- Create a domain controller named dc3.corp.fabrikam.com in Vnet1.
- Deploy an Azure Virtual Desktop host pool to Vnet1. The Azure Virtual Desktop session hosts will be hybrid Azure AD joined.
- License all servers for Microsoft Defender for servers.
- Use Azure Policy to enforce configuration management policies on the servers in Azure and onpremises.

Networking Requirements

Fabrikam identifies the following security requirements:

- Apply GPO4 to the Azure Virtual Desktop session hosts. Ensure that Azure Virtual Desktop user sessions lock after being idle for 10 minutes. Users must be able to control the lockout time manually from their client computer.
- Ensure that server administrators request approval before they can establish a Remote Desktop connection to an Azure virtual machine. If the request is approved, the connection must be established within two hours.
- Prevent user passwords from containing all or part of words that are based on the company name, such as Fab. fabrikam or fsbr! |.
- Ensure that all instances of Webapp1 use the same service account. The password of the service account must change automatically every 30 days.
- Prevent domain controllers from directly contacting hosts on the internet.

File Sharing Requirements

You need to configure the synchronization of Azure files to meet the following requirements:

- Ensure that seattlefiles syncs to FS2.
- Ensure that newyorkfiles syncs to FS1.
- Ensure that companyfiles syncs to both FS1 and FS2.

QUESTION 1

You need to ensure that Automanage meets the technical requirements.

On which Azure virtual machines should you enable Automanage?

- A. Server1 only
- B. Server2 only
- C. Server1 and Server2 only
- D. Server2 and Server3 only
- E. Server1 and Server4 only

Correct Answer: D

Section:

QUESTION 2

Which two languages can you use for Task1? Each correct answer presents a complete solution.

NOTE: Each correct selection is worth one point.

- A. Java
- B. Bicep
- C. JavaScript
- D. Python
- E. PowerShell

Correct Answer: D, E

Section:

QUESTION 3

You need to ensure that VM3 meets the technical requirements.

What should you install first?

- A. Enhanced Storage
- B. File Server Resource Manager (FSRM)
- C. Windows Standards-Based Storage Management
- D. the iSNS Server service

Correct Answer: B

Section:

QUESTION 4

DRAG DROP

DC1 fails.

You need to meet the technical requirements for the schema master.

Yourunntdsutil.exe.

Which five commands should you run in sequence? To answer, move the appropriate commands from the list of commands to the answer area and arrange them in the correct order?

Select and Place:



Commands

- metadata cleanup
- roles
- connect
- connect to server dc2.adatum.com
- quit
- seize schema master



Answer Area



Correct Answer:

Commands

- metadata cleanup
-
-
-
-
-



Answer Area

- roles
- connect
- connect to server dc2.adatum.com
- quit
- seize schema master



Section:

Explanation:

- roles
- connect
- connect to server dc2.adatum.com
- quit
- seize schema master

QUESTION 5

DRAG DROP

You need to implement the planned change for Data1.

Which actions should you perform in sequence? To answer, drag the appropriate actions to the correct order. Each action may be used once, more than once, or not at all. You may need to drag the split bar between panes or scroll to view content.

NOTE: Each correct selection is worth one point.

Select and Place:

Actions

- Add a server endpoint.
- Create a sync group.
- Deploy the Azure Storage Sync service.
- Install the DFS Replication role service.
- Install the Storage Replica feature.

Answer Area

- Step 1:
- Step 2: Install and register the Azure File Sync agent.
- Step 3:
- Step 4:

Correct Answer:

Actions

-
-
-
- Install the DFS Replication role service.
- Install the Storage Replica feature.

Answer Area

- Step 1: Deploy the Azure Storage Sync service.
- Step 2: Install and register the Azure File Sync agent.
- Step 3: Create a sync group.
- Step 4: Add a server endpoint.

Section:

Explanation:

QUESTION 6

You need to implement a name resolution solution that meets the networking requirements. Which two actions should you perform? Each correct answer presents part of the solution. NOTE: Each correct selection is worth one point

- A. Create an Azure private DNS zone named corp.fabnkam.com.
- B. Create a virtual network link in the coip.fabnkam.com Azure private DNS zone.
- C. Create an Azure DNS zone named corp.fabrikam.com.
- D. Configure the DNS Servers settings for Vnet1.
- E. Enable autoregistration in the corp.fabnkam.com Azure private DNS zone.
- F. On DC3, install the DNS Server role.
- G. Configure a conditional forwarder on DC3.

Correct Answer: D, F

Section:

Explanation:

Virtual machines in an Azure virtual network receive their DNS configuration from the DNS settings configured on the virtual network. You need to configure the Azure virtual network to use DC3 as the DNS server. Then all virtual machines in the virtual network will use DC3 and their DNS server.

QUESTION 7

HOTSPOT

You need to configure Azure File Sync to meet the file sharing requirements. What should you do? To answer, select the appropriate options in the answer area. NOTE Each correct selection is worth one point.

Hot Area:

Answer Area

Minimum number of sync groups to create:

Minimum number of Storage Sync Services to create:

Minimum number of Storage Sync Services to create:

Answer Area:

Answer Area

Minimum number of sync groups to create:

Minimum number of Storage Sync Services to create:

Minimum number of Storage Sync Services to create:

Section:

Explanation:

Reference:

<https://docs.microsoft.com/en-us/azure/storage/file-sync/file-sync-planning>

QUESTION 8

DRAG DROP

Which three actions should you perform in sequence to meet the security requirements for Webapp1? To answer, move the appropriate actions from the list of actions to the answer area and arrange them in the correct order.

Select and Place:

Actions	Answer Area
Create a standalone managed service account (sMSA) in AD DS.	
Configure the IIS application pool to run as Network Service.	
Configure the IIS application pool to run as a specified user account.	
Create a group managed service account (gMSA) in Active Directory.	
Create a system-assigned managed identity in Azure AD.	
Create a user-assigned managed identity in Azure AD.	
Create the Key Distribution Services (KDS) root key in AD DS.	

Correct Answer:

Actions	Answer Area
Create a standalone managed service account (sMSA) in AD DS.	Configure the IIS application pool to run as Network Service.
	Create a group managed service account (gMSA) in Active Directory.
Configure the IIS application pool to run as a specified user account.	Create the Key Distribution Services (KDS) root key in AD DS.
Create a system-assigned managed identity in Azure AD.	
Create a user-assigned managed identity in Azure AD.	

Section:

Explanation:

Reference: <https://docs.microsoft.com/en-us/windows-server/security/group-managed-serviceaccounts/group-managed-service-accounts-overview>

QUESTION 9

HOTSPOT

You need to configure network communication between the Seattle and New York offices. The solution must meet the networking requirements. What should you configure? To answer, select the appropriate options in the answer area.

NOTE: Each correct selection is worth one point.

Hot Area:

On a Virtual WAN hub:	
	An ExpressRoute gateway
	A virtual network gateway
	An ExpressRoute circuit connection
In the offices:	
	An ExpressRoute circuit connection
	A Site to-Site VPN
	An Azure application gateway
	An on premises data gateway

Answer Area:

On a Virtual WAN hub:	
	An ExpressRoute gateway
	A virtual network gateway
	An ExpressRoute circuit connection
In the offices:	
	An ExpressRoute circuit connection
	A Site to-Site VPN
	An Azure application gateway
	An on premises data gateway



Section:

Explanation:

QUESTION 10

You need to implement the planned changes for the Azure DNS Private Resolver. Which private DNS zones can you use for name resolution?

- A. Zone1.com only
- B. Zone2.com only
- C. Zone1.com and Zone2.com only
- D. Zone2.com and Zone3.com only
- E. Zone1.com, Zone2.com, and Zone3.com

Correct Answer: A

Section:

QUESTION 11

HOTSPOT

You need to ensure that data availability on SSPace1 meets the technical requirements.
What is the maximum number of physical disks that can fail on each disk? To answer, select the appropriate options in the answer area.
NOTE: Each correct selection is worth one point.

Hot Area:

Answer Area

Disk1: 2 1 2 3 4 5

Disk2: 2 1 2 3 4 5

Vdumps

Answer Area:

Answer Area

Disk1: 2 1 2 3 4 5

Disk2: 2 1 2 3 4 5

Section:

Explanation:

QUESTION 12

You need to implement the planned changes for Microsoft Entra users to sign in to Server1.
Which PowerShell cmdlet should you run?

- A. Add-ADComputerServiceAccount
- B. Set-AzVM
- C. Set-AzVMExtension
- D. New-ADComputer

Correct Answer: C

Section:

QUESTION 13

You need to ensure that access to storage1 for the Marketing OU users meets the technical requirements.
What should you implement?

- A. Microsoft Entra Connect cloud sync
- B. Active Directory Federation Services (AD FS)
- C. Microsoft Entra Connect in staging mode
- D. Microsoft Entra Connect in active mode

Correct Answer: A

Section:

QUESTION 14

HOTSPOT

You need to meet technical requirements for HyperV1.

Which command should you run? To answer, select the appropriate options in the answer area.

NOTE: Each correct selection is worth one point.

Hot Area:

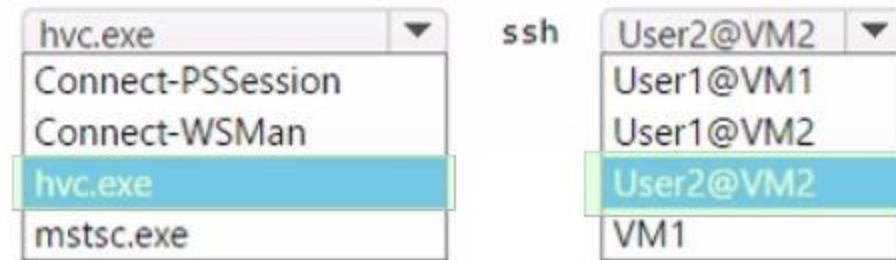
Answer Area

The screenshot shows a hot spot question interface with two dropdown menus. The first dropdown menu is labeled 'hvc.exe' and contains the following options: Connect-PSSession, Connect-WSMan, hvc.exe (selected), and mstsc.exe. The second dropdown menu is labeled 'ssh' and contains the following options: User2@VM2 (selected), User1@VM1, User1@VM2, and VM1.

Answer Area:



Answer Area



Section:

Explanation:

QUESTION 15

What should you implement for the deployment of DC3?

- A. Azure Active Directory Domain Services (Azure AD DS)
- B. Azure AD Application Proxy
- C. an Azure virtual machine
- D. an Azure AD administrative unit

Correct Answer: C

Section:

Explanation:

Create a domain controller named dc3.corp.fabrikam.com in Vnet1.

In a hybrid network, you can configure Azure virtual machines as domain controllers. The domain controllers in Azure communicate with the on-premises domain controllers in the same way that on-premises domain controllers communicate with each other.

QUESTION 16

You need to configure remote administration to meet the security requirements. What should you use?

- A. just in time (JIT) VM access
- B. Azure AD Privileged Identity Management (PIM)
- C. the Remote Desktop extension for Azure Cloud Services
- D. an Azure Bastion host

Correct Answer: A

Section:

Explanation:

Reference:

<https://docs.microsoft.com/en-us/azure/defender-for-cloud/just-in-time-access-usage?tabs=jitconfig-asc%2Cjit-request-asc>

QUESTION 17

You need to configure the Group Policy settings to ensure that the Azure Virtual Desktop session hosts meet the security requirements. What should you configure?

- A. security filtering for the link of GP04
- B. security filtering for the link of GPO1



- C. loopback processing in GPO4
- D. the Enforced property for the link of GP01
- E. loopback processing in GPO1
- F. the Enforced property for the link of GP04

Correct Answer: C

Section:

QUESTION 18

You are planning the implementation Azure Arc to support the planned changes. You need to configure the environment to support configuration management policies. What should you do?

- A. Hybrid Azure AD join all the servers.
- B. Create a hybrid runbook worker in Azure Automation.
- C. Deploy the Azure Connected Machine agent to all the servers.
- D. Deploy the Azure Monitor agent to all the servers.

Correct Answer: C

Section:

Explanation:

Reference:

<https://docs.microsoft.com/en-us/azure/azure-arc/servers/plan-at-scale-deployment>

QUESTION 19

You need to implement an availability solution for DHCP that meets the networking requirements.

Which two actions should you perform? Each correct answer presents part of the solution.

NOTE: Each correct selection is worth one point.

- A. On DHCP1, create a scope that contains 25 percent of the IP addresses from Scope2.
- B. On the router in each office, configure a DHCP relay.
- C. DHCP2, configure a scope that contains 25 percent of the IP addresses from Scope 1 .
- D. On each DHCP server, install the Failover Clustering feature and add the DHCP cluster role.
- E. On each DHCP scope, configure DHCP failover.

Correct Answer: B, E

Section:

Explanation:

Reference:

[https://docs.microsoft.com/en-us/previous-versions/windows/it-pro/windows-server-2012-r2-and-2012/hh831385\(v=ws.11\)](https://docs.microsoft.com/en-us/previous-versions/windows/it-pro/windows-server-2012-r2-and-2012/hh831385(v=ws.11)) Topic 3, Misc Questions

QUESTION 20

DRAG DROP

You need to meet the security requirements for passwords.

Where should you configure the components for Azure AD Password Protection? To answer, drag the appropriate components to the correct locations. Each component may be used once, more than once, or not at all. You may need to drag the split bar between panes or scroll to view content.

NOTE Each correct selection is worth one point.

Select and Place:

Locations	Answer Area
DC1 only	The Azure AD Password Protection DC agent: Location
All the domain controllers	The Azure AD Password Protection proxy service: Location
VM1 and VM2	A custom banned password list: Location
The Azure AD tenant	

Correct Answer:

Locations	Answer Area
DC1 only	The Azure AD Password Protection DC agent: All the domain controllers
	The Azure AD Password Protection proxy service: VM1 and VM2
	A custom banned password list: The Azure AD tenant

Section:

Explanation:

Exam B

QUESTION 1

You have an on premises Active Directory Domain Services (AD DS) domain that syncs with an Azure Active Directory (Azure AD) tenant. You plan to implement self-service password reset (SSPR) in Azure AD. You need to ensure that users that reset their passwords by using SSPR can use the new password resources in the AD DS domain. What should you do?

- A. Deploy the Azure AD Password Protection proxy service to the on premises network.
- B. Run the Microsoft Azure Active Directory Connect wizard and select Password writeback.
- C. Grant the Change password permission for the domain to the Azure AD Connect service account.
- D. Grant the impersonate a client after authentication user right to the Azure AD Connect service account.

Correct Answer: B

Section:

Explanation:

Reference:

<https://docs.microsoft.com/en-us/azure/active-directory/authentication/tutorial-enable-ssprwriteback>

QUESTION 2

Your network contains an Active Directory Domain Services (AD DS) domain named contoso.com.

The domain contains a DNS server named Server1. Server1 hosts a DNS zone named fabrikam.com that was signed by DNSSEC. You need to ensure that all the member servers in the domain perform DNSSEC validation for the fabrikam.com namespace. What should you do?

- A. On Served, run the Add-DnsServerTrustAnchor cmdlet.
- B. On each member server, run the Add-DnsServerTrustAnchor cmdlet.
- C. From a Group Policy Object (GPO), add a rule to the Name Resolution Policy Table (NRPT).
- D. From a Group Policy Object (GPO), modify the Network List Manager policies.

Correct Answer: C

Section:

QUESTION 3

HOTSPOT

You need to sync files from an on-premises server named Server1 to Azure by using Azure File Sync. You have a cloud tiering policy that is configured for 30 percent free space and 70 days. Volume E on Server1 is 500 GB. A year ago, you configured E:\Data on Server1 to sync by using Azure File Sync. The files that are visible in E:\Data are shown in the following table.

Name	Size	Last accessed
File1	200 GB	2 days ago
File2	100 GB	10 days ago
File3	200 GB	60 days ago
File4	50 GB	100 days ago

Volume E does NOT contain any other files.

Where are File1 and File3 located? To answer, select the appropriate options in the answer area.

Hot Area:

Answer Area

File1:
Server1 only
The Azure file share only
Server1 and the Azure file share

File3:
Server1 only
The Azure file share only
Server 1 and the Azure file share

Answer Area:

Answer Area

File1:
Server1 only
The Azure file share only
Server1 and the Azure file share

File3:
Server1 only
The Azure file share only
Server 1 and the Azure file share

Section:

Explanation:

QUESTION 4

HOTSPOT

You need to sync files from an on-premises server named Server1 to Azure by using Azure File Sync.

You have a cloud tiering policy that is configured for 30 percent free space and 70 days.

Volume E on Server1 is 500 GB.

A year ago, you configured E:\Data on Server1 to sync by using Azure File Sync. The files that are visible in E:\Data are shown in the following table.

Name	Size	Last accessed
File1	200 GB	2 days ago
File2	100 GB	10 days ago
File3	200 GB	60 days ago
File4	50 GB	100 days ago

Volume E does NOT contain any other files.

Where are File1 and File3 located? To answer, select the appropriate options in the answer area.
NOTE: Each correct selection is worth one point.

Hot Area:

File1:

Server1 only
The Azure file share only
Server1 and the Azure file share

File3:

Server1 only
The Azure file share only
Server1 and the Azure file share

Answer Area:

File1:

Server1 only
The Azure file share only
Server1 and the Azure file share

File3:

Server1 only
The Azure file share only
Server1 and the Azure file share



Section:

Explanation:

QUESTION 5

HOTSPOT

You have on-premises servers that run Windows Server as shown in the following table.

Name	Local content
Server1	D:\Folder1\File1.docx
Server2	D:\Data1\File3.docx

You have an Azure file share named share1 that stores two files named File2.docx and File3.docx.

You create an Azure File Sync sync group that includes the following endpoints: share D:\Folder1 on Server1 D:\Data1 on Server2 For each of the following statements, select Yes if the statement is true. Otherwise, select No. NOTE: Each correct selection is worth one point.

Hot Area:

Statements	Yes	No
You can create a file named File2.docx in D:\Folder1 on Server1.	<input type="checkbox"/>	<input type="checkbox"/>
You can create a file named File1.docx in D:\Data1 on Server2.	<input type="checkbox"/>	<input type="checkbox"/>
File3.docx will sync to Server1.	<input type="checkbox"/>	<input type="checkbox"/>



Answer Area:

Statements	Yes	No
You can create a file named File2.docx in D:\Folder1 on Server1.	<input checked="" type="checkbox"/>	<input type="checkbox"/>
You can create a file named File1.docx in D:\Data1 on Server2.	<input checked="" type="checkbox"/>	<input type="checkbox"/>
File3.docx will sync to Server1.	<input type="checkbox"/>	<input checked="" type="checkbox"/>

Section:

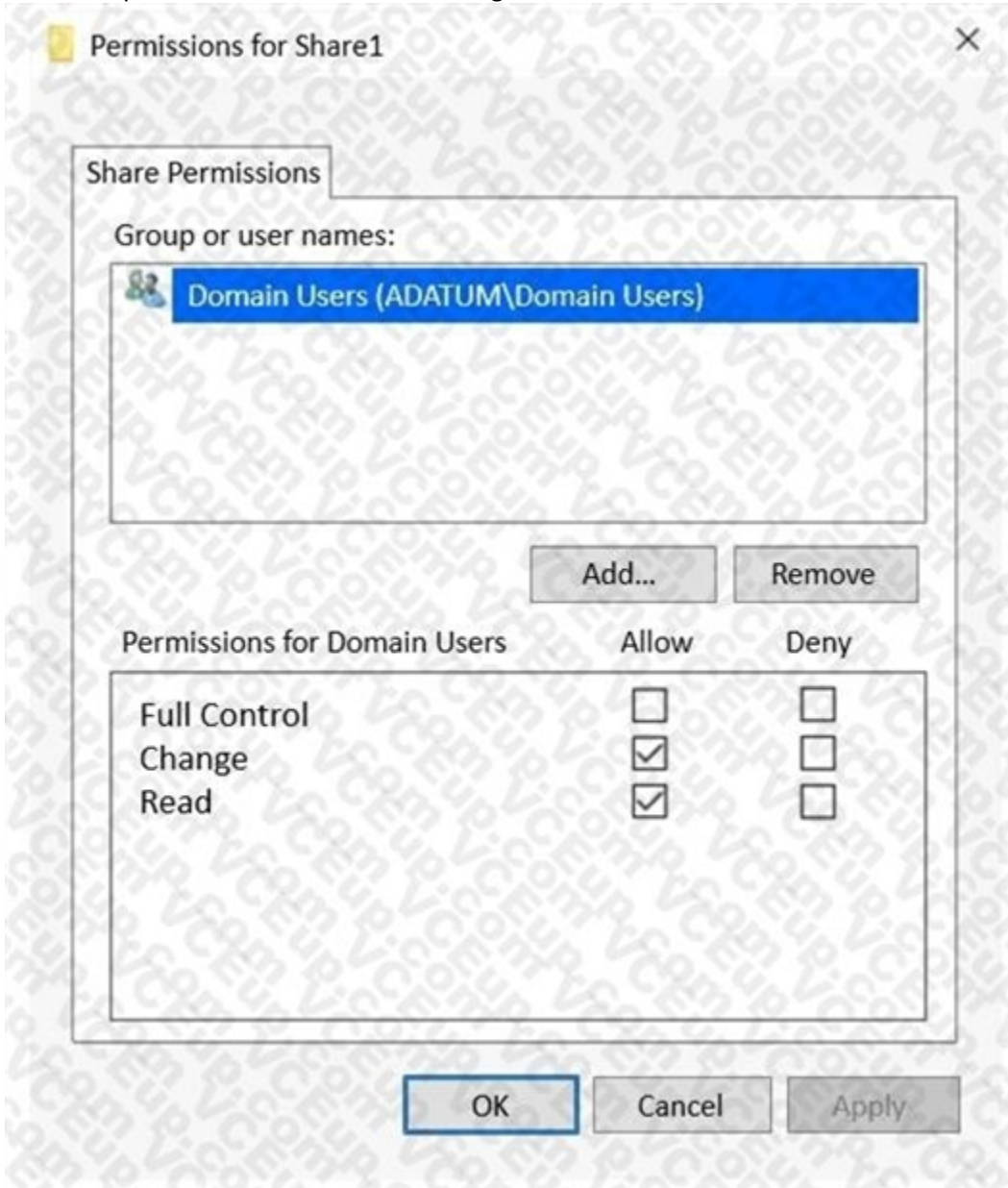
Explanation:

QUESTION 6
HOTSPOT

Your network contains an Active Directory Domain Services (AD DS) domain named adatum.com. The domain contains a file server named Server1 and three users named User1, User2, and User3. Server1 contains a shared folder named Share1 that has the following configurations:

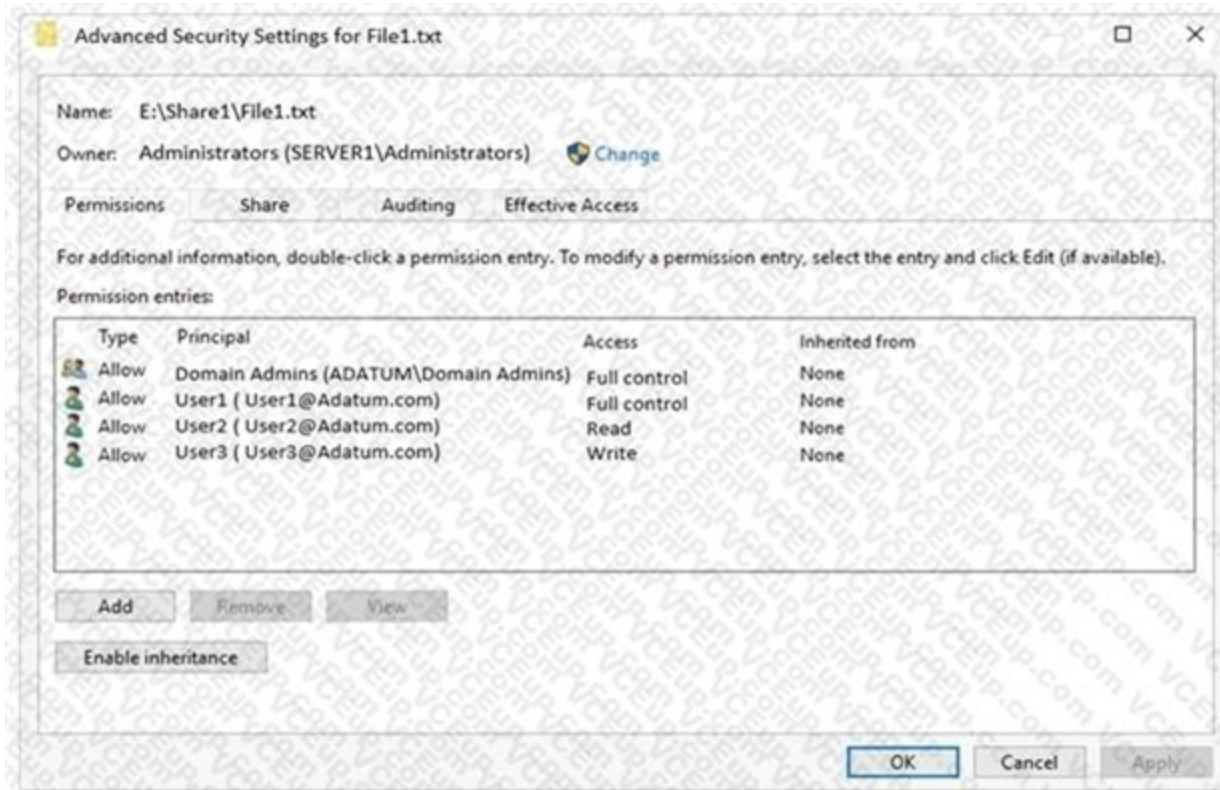
```
ShareState      : Online
AvailabilityType : NonClustered
FolderEnumerationMode : AccessBased
CachingMode    : Manual
LeasingMode    : Full
SmbInstance    : Default
CompressData   : False
ContinuouslyAvailable : False
EncryptData    : False
Name           : Share1
Path           : E:\Share1
ShadowCopy     : False
```

The share permissions for Share1 are configured as shown in the Share Permissions exhibit.



Share1 contains a file named File1.txt. The advanced security settings for File1.txt are configured as shown in the File Permissions exhibit.

 The logo for 'Vdumps' features a stylized orange 'V' followed by the word 'dumps' in a grey, lowercase sans-serif font.



For each of the following statements, select Yes if the statement is true. Otherwise, select No.
NOTE: Each correct selection is worth one point.

Hot Area:



Statements

When User1 connects to \\Server1.adatum.com\Share1\, the user can take ownership of File1.txt.

Yes No

When User2 connects to \\Server1.adatum.com\Share1\, File1.txt is visible.

Yes No

When User3 connects to \\Server1.adatum.com\Share1\, File1.txt is visible.

Yes No

Answer Area:

Statements	Yes	No
When User1 connects to \\Server1.adatum.com\Share1\, the user can take ownership of File1.txt.	<input type="radio"/>	<input checked="" type="radio"/>
When User2 connects to \\Server1.adatum.com\Share1\, File1.txt is visible.	<input checked="" type="radio"/>	<input type="radio"/>
When User3 connects to \\Server1.adatum.com\Share1\, File1.txt is visible.	<input checked="" type="radio"/>	<input type="radio"/>

Section:

Explanation:

QUESTION 7

DRAG DROP

You have a server named Server1.


You plan to use Storage Spaces to expand the storage available to Server1. You attach eight physical disks to Server1. Four disks are HDDs and four are SSDs. You need to create a volume on Server1 that will use the storage on all the new disks. The solution must provide the fastest read performance for frequently used files. Which three actions should you perform in sequence? To answer, move the appropriate actions from the list of actions to the answer area and arrange them in the correct order.

Select and Place:

Actions

- Create a virtual disk.
- Convert each new disk into a dynamic disk.
- Create a storage pool.
- Create a spanned volume.
- Convert each new disk into a GPT disk.
- Create a simple volume.

Answer Area



Correct Answer:

Actions	Answer Area
	Create a storage pool.
Convert each new disk into a dynamic disk.	Create a virtual disk.
	Create a simple volume
Create a spanned volume.	
Convert each new disk into a GPT disk.	



Section:

Explanation:

Reference:

<https://redmondmag.com/articles/2018/07/31/storage-spaces-windows-server-2016-1.aspx>

<https://redmondmag.com/articles/2018/08/02/storage-spaces-windows-server-2016-2.aspx>



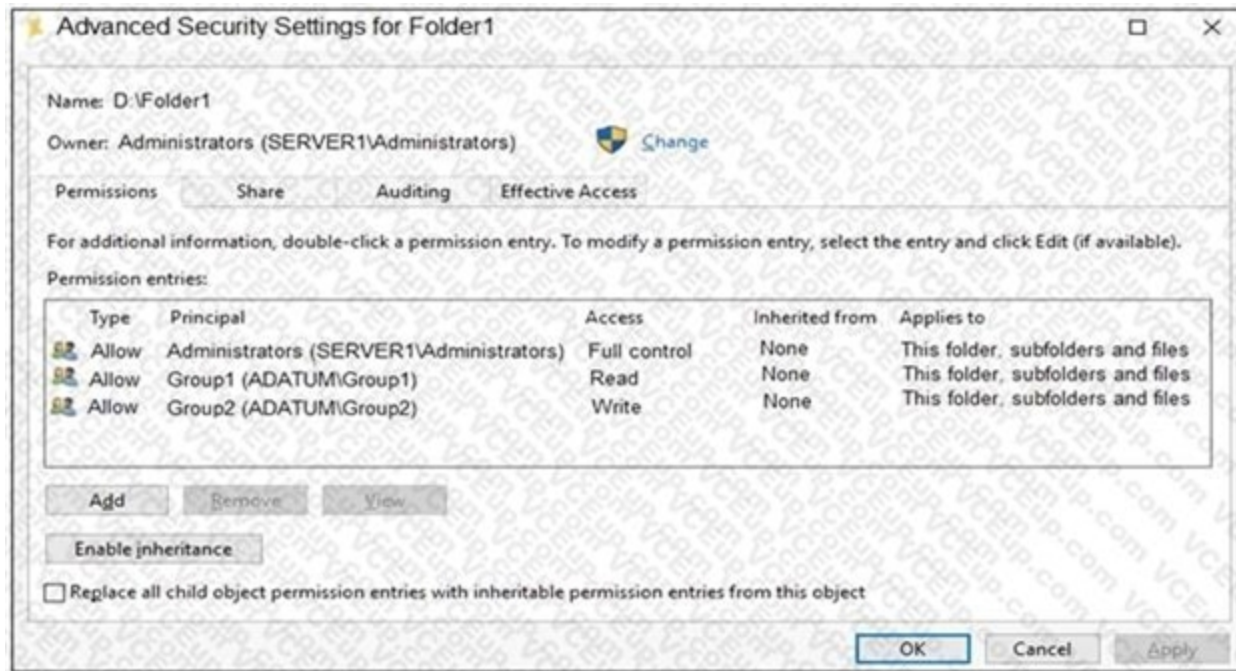
QUESTION 8

HOTSPOT

Your network contains an Active Directory Domain Services (AD DS) domain named adatum.com. The domain contains a server named Server1 and the users shown in the following table.

Name	Member of
User1	Group1
User2	Group2
User3	Group3

Server1 contains a folder named D:\Folder1. The advanced security settings for Folder1 are configured as shown in the Permissions exhibit. (Click the Permissions tab.)



Folder1 is shared by using the following configurations:

```
Path : D:\Folder1
Name : Share1
ShareType : FileSystemDirectory
FolderEnumerationMode : Unrestricted
```

The share permissions for Share1 are shown in the following table.

Group	Permission
Group1	Allow – Change
Group3	Allow – Full Control



For each of the following statements, select Yes if the statement is true. Otherwise, select No.

NOTE: Each correct selection is worth one point.

Hot Area:

Statements	Yes	No
User1 can read the files in Share1.	<input type="radio"/>	<input type="radio"/>
User3 can delete files in Share1.	<input type="radio"/>	<input type="radio"/>
If User2 connects to \\Server1.adatum.com from File Explorer, Share1 will be listed.	<input type="radio"/>	<input type="radio"/>

Answer Area:

Statements	Yes	No
User1 can read the files in Share1.	<input checked="" type="radio"/>	<input type="radio"/>
User3 can delete files in Share1.	<input type="radio"/>	<input checked="" type="radio"/>
If User2 connects to \\Server1.adatum.com from File Explorer, Share1 will be listed.	<input checked="" type="radio"/>	<input type="radio"/>

Section:

Explanation:

Box 1: Yes

Group1 has Read access to Folder1 and Change access to Share1. Therefore, User1 can read the files in Share1. Box 2: No

Group3 has Full Control access to Share1. However, Group3 has no permissions configured Folder1.

Therefore, User3 cannot access the files in Share1.

Box 3: Yes

Group2 has write permission to Folder1. However, Group2 has no permission on Share1. Therefore, users in Group2 cannot access files in the shared folder. Access Based Enumeration when enabled hides files and folders that users do not have permission to access. However, Access Based Enumeration is not enabled on Share1. This is indicated by the FolderEnumerationMode – Unrestricted setting. Therefore, the share will be visible to User2 even though User2 cannot access the shared folder.

QUESTION 9

HOTSPOT

You have an onpremises DNS server named Server1 that runs Windows Server. Server 1 hosts a DNS zone named fabrikam.com You have an Azure subscription that contains the resources shown in the following table.



Name	Type	Description
Vnet1	Virtual network	Connects to the on-premises network by using a Site-to-Site VPN
VM1	Virtual machine	Runs Windows Server and has the DNS Server role installed
contoso.com	Private DNS zone	Linked to Vnet1
contoso.com	Public DNS zone	Contains the DNS records of all the platform as a service (PaaS) resources

You need to design a solution that will automatically resolve the names of any PaaS resources for which you configure private endpoints in Vnet1.

How should you configure the name resolution? To answer, select the appropriate options in the answer area.

NOTE: Each correct selection is worth one point.

Hot Area:

Answer Area

On Vnet1:

- Configure VM1 to forward requests for the contoso.com zone to the public DNS zone.
- Configure Vnet1 to use a custom DNS server that is set to the Azure-provided DNS at 168.63.129.16.
- Configure VM1 to forward requests for the contoso.com zone to the Azure-provided DNS at 168.63.129.16.

On the on-premises network:

- Configure forwarding for the contoso.com zone to VM1.
- Configure forwarding for the contoso.com zone to the public DNS zone.
- Configure forwarding for the contoso.com zone to the Azure-provided DNS at 168.63.129.16.

Answer Area:

Answer Area

On Vnet1:

- Configure VM1 to forward requests for the contoso.com zone to the public DNS zone.
- Configure Vnet1 to use a custom DNS server that is set to the Azure-provided DNS at 168.63.129.16.
- Configure VM1 to forward requests for the contoso.com zone to the Azure-provided DNS at 168.63.129.16.

On the on-premises network:

- Configure forwarding for the contoso.com zone to VM1.
- Configure forwarding for the contoso.com zone to the public DNS zone.
- Configure forwarding for the contoso.com zone to the Azure-provided DNS at 168.63.129.16.

Section:

Explanation:



QUESTION 10

Note: This question is part of a series of questions that present the same scenario. Each question in the series contains a unique solution that might meet the stated goals. Some question sets might have more than one correct solution, while others might not have a correct solution.

After you answer a question in this section, you will NOT be able to return to it. As a result, these questions will not appear in the review screen. You are planning the deployment of DNS to a new network.

You have three internal DNS servers as shown in the following table.

Name	Location	IP address	Local DNS zone
Server1	Montreal	10.0.1.10	contoso.local
Server2	Toronto	10.0.2.10	east.contoso.local
Server3	Seattle	10.0.3.10	west.contoso.local

The contoso.local zone contains zone delegations for east.contoso.local and west.contoso.local. All the DNS servers use root hints. You need to ensure that all the DNS servers can resolve the names of all the internal namespaces and internet hosts. Solution: On Server2, you create a conditional forwarder for contoso.local and west.contoso.local. On Server3, you create a conditional forwarder for contoso.local and east.contoso.local. Does this meet the goal?

- A. Yes
- B. No

Correct Answer: B

Section:

Explanation:

QUESTION 11

You have a server that runs Windows Server and contains a shared folder named UserData.

You need to limit the amount of storage space that each user can consume in UserData.
What should you use?

- A. Storage Spaces
- B. Work Folders
- C. Distributed File System (DFS) Namespaces
- D. File Server Resource Manager (FSRM)

Correct Answer: D

Section:

Explanation:

Reference:

<https://docs.microsoft.com/en-us/windows-server/storage/fsrm/fsrm-overview>

QUESTION 12

Your network contains an Active Directory Domain Services (AD DS) domain named contoso.com.

The domain contains two servers named Server1 and Server2.

Server1 contains a disk named Disk2. Disk2 contains a folder named UserData. UserData is shared to the Domain Users group. Disk2 is configured for deduplication. Server1 is protected by using Azure Backup. Server1 fails.

You connect Disk2 to Server2.

You need to ensure that you can access all the files on Disk2 as quickly as possible.

What should you do?

- A. Create a storage pool.
- B. Restore files from Azure Backup.
- C. Install the File Server Resource Manager server role.
- D. Install the Data Deduplication server role.

Correct Answer: D

Section:

Explanation:

Reference:

<https://docs.microsoft.com/en-us/windows-server/storage/data-deduplication/overview>

QUESTION 13

Note: This question is part of a series of questions that present the same scenario. Each question in the series contains a unique solution that might meet the stated goals. Some question sets might have more than one correct solution, while others might not have a correct solution.

After you answer a question in this section, you will NOT be able to return to it. As a result, these questions will not appear in the review screen. Your network contains an Active Directory Domain Services (AD DS) forest. The forest contains three Active Directory sites named Site1, Site2, and Site3. Each site contains two domain controllers. The sites are connected by using DEFAULTSITELINK.

You open a new branch office that contains only client computers.

You need to ensure that the client computers in the new office are primarily authenticated by the domain controllers in Site1. Solution: You create a new site named Site4 and associate Site4 to DEFAULTSITELINK.

Does this meet the goal?

- A. Yes
- B. No

Correct Answer: B

Section:



QUESTION 14

Note: This question is part of a series of questions that present the same scenario. Each question in the series contains a unique solution that might meet the stated goals. Some question sets might have more than one correct solution, while others might not have a correct solution.

After you answer a question in this section, you will NOT be able to return to it. As a result, these questions will not appear in the review screen. You are planning the deployment of DNS to a new network. You have three internal DNS servers as shown in the following table.

Name	Location	IP address	Local DNS zone
Server1	Montreal	10.0.1.10	contoso.local
Server2	Toronto	10.0.2.10	east.contoso.local
Server3	Seattle	10.0.3.10	west.contoso.local

The contoso.local zone contains zone delegations for east.contoso.local and west.contoso.local. All the DNS servers use root hints. You need to ensure that all the DNS servers can resolve the names of all the internal namespaces and internet hosts. Solution: On Server2, you create a conditional forwarder for west.contoso.local. On Server3, you create a conditional forwarder for east.contoso.local. Does this meet the goal?

- A. Yes
- B. No

Correct Answer: B

Section:

QUESTION 15

You plan to deploy a containerized application that requires .NET Core.

You need to create a container image for the application. the image must be as small as possible.

Which base image should you use?

- A. Nano Server
- B. Server Cote
- C. Windows Server
- D. Windows



Correct Answer: A

Section:

Explanation:

Reference:

<https://techcommunity.microsoft.com/t5/containers/nano-server-x-server-core-x-server-whichbase-image-is-the-right/ba-p/2835785>

QUESTION 16

You have an Azure virtual machine named VM1 that runs Windows Server

You need to configure the management of VM1 to meet the following requirements:

- Require administrators to request access to VM1 before establishing a Remote Desktop connection.
- Limit access to VM1 from specific source IP addresses.
- Limit access to VM1 to a specific management port

What should you configure?

- A. a network security group (NSG)
- B. Azure Active Directory (Azure AD) Privileged identity Management (PIM)
- C. Azure Front Door
- D. Microsoft Defender for Cloud

Correct Answer: D

Section:

Explanation:

Reference:

<https://docs.microsoft.com/en-us/azure/defender-fo>

QUESTION 17

You have a server named Host1 that has the Hyper-V server role installed. Host1 hosts a virtual machine named VM1. You have a management server named Server1 that runs Windows Server. You remotely manage Host1 from Server1 by using Hyper-V Manager. You need to ensure that you can access a USB hard drive connected to Server1 when you connect to VM1 by using Virtual Machine Connection. Which two actions should you perform? Each correct answer presents part of the solution.

NOTE: Each correct selection is worth one point.

- A. From the Hyper-V Settings of Host1, select Allow enhanced session mode
- B. From Disk Management on Host1, attach a virtual hard disk.
- C. From Virtual Machine Connection, switch to a basic session.
- D. From Virtual Machine Connection select Show Options and then select the USB hard drive.
- E. From Disk Management on Host1, select Rescan Disks

Correct Answer: A, D

Section:

Explanation:

Reference:

<https://docs.microsoft.com/en-us/windows-server/virtualization/hyper-v/learn-more/use-localresources-on-hyper-v-virtual-machine-with-vmconnect>

QUESTION 18

Your network contains an on-premises Active Directory Domain Services (AD DS) domain named contoso.com. The domain contains three servers that run Windows Server and have the Hyper-V server role installed. Each server has a Switch Embedded Teaming (SET) team. You need to verify that Remote Direct Memory Access (RDMA) and all the required Windows Server settings are configured properly on each server. What should you use?

- A. Server Manager
- B. the validate-DCB cmdlet
- C. the Get-NetAdapter cmdlet
- D. Failover Cluster Manager

Correct Answer: B

Section:

Explanation:

Reference:

<https://github.com/Microsoft/Validate-DCB>

QUESTION 19

You have five file servers that run Windows Server.

You need to block users from uploading video files that have the .mov extension to shared folders on the file servers. All other types of files must be allowed. The solution must minimize administrative effort. What should you create?

- A. a Dynamic Access Control central access policy
- B. a file screen
- C. a Dynamic Access Control central access rule
- D. a data loss prevention (DLP) policy

Correct Answer: B

Section:

Explanation:

Reference:

<https://docs.microsoft.com/en-us/windows-server/storage/fsrm/file-screening-management>

QUESTION 20

You have a server named Server1 that runs Windows Server. Server1 has the storage pools shown in the following table.

Name	Number of 7,200-RPM HDDs	Number of 10,000-RPM HDDs	Number of SSDs
Pool1	4	4	None
Pool2	None	2	2
Pool3	8	None	4

You plan to create a virtual disk named VDisk1 that will use storage tiers. Which pools can you use to create VDisk1 ?

- A. Pool2 and Pool3 only
- B. Pool 2only
- C. Pool only
- D. Pool, Pool2, and Pool3
- E. Pool1 and Pool2 only
- F. Pool1 and Pool3 only
- G. Pool3 only



Correct Answer: A

Section:

Explanation:

Storage tiering requires both standard HDDs and SSDs. We cannot use Pool1 because it does not have any SSDs.

QUESTION 21

You have an on-premises Active Directory Domain Services (AD DS) domain that syncs with an Azure Active Directory (Azure AD) tenant. You plan deploy 100 new Azure virtual machines that will run Windows Server. You need to ensure that each new virtual machine is joined to the AD DS domain.

What should you use?

- A. Azure AD Connect
- B. a Group Policy Object (GPO)
- C. an Azure Resource Manager (ARM) template
- D. an Azure management group

Correct Answer: C

Section:

Explanation:

Reference:

<https://www.ludovicmedard.com/create-an-arm-template-of-a-virtual-machine-automaticallyjoined-to-a-domain/>

QUESTION 22

You have an on-premises Active Directory Domain Services (AD DS) domain that syncs with an Azure Active Directory (Azure AD) tenant. You have several Windows 10 devices that are Azure AD hybrid-joined. You need to ensure that when users sign in to the devices, they can use Windows Hello for Business.

Which optional feature should you select in Azure AD Connect?

- A. Device writeback
- B. Group writeback
- C. Password writeback
- D. Directory extension attribute sync
- E. Azure AD app and attribute filtering

Correct Answer: A

Section:

Explanation:

QUESTION 23

Your network contains an on-premises Active Directory Domain Services (AD DS) domain named contoso.com. The domain contains the objects shown in the following table.

Name	Type
User1	User
Group1	Universal security group
Group2	Domain local security group
Computer1	Computer

You plan to sync contoso.com with an Azure Active Directory (Azure AD) tenant by using Azure AD Connect. You need to ensure that all the objects can be used in Conditional Access policies. What should you do?

- A. Change the scope of Group2 to Universal
- B. Clear the Configure device writeback option.
- C. Change the scope of Group1 and Group2 to Global
- D. Select the Configure Hybrid Azure AD join option.

Correct Answer: D

Section:

Explanation:

Hybrid Azure AD join needs to be configured to enable Computer1 to be used in Conditional Access Policies. Synchronized users, universal groups and domain local groups can be used in Conditional Access Policies.

QUESTION 24

Your network contains a multi-site Active Directory Domain Services (AD DS) forest. Each Active Directory site is connected by using manually configured site links and automatically generated connections. You need to minimize the convergence time for changes to Active Directory.

What should you do?

- A. For each site link, modify the options attribute.
- B. For each site link, modify the site link costs.
- C. For each site link, modify the replication schedule.
- D. Create a site link bridge that contains all the site links.

Correct Answer: C

Section:

Explanation:

Reference:

<https://docs.microsoft.com/en-us/windows-server/identity/ad-ds/plan/determining-the-interval>

QUESTION 25

Your network contains an Active Directory Domain Services (AD DS) domain- The domain contains 10 servers that run Windows Server. The servers have static IP addresses. You plan to use DHCP to assign IP addresses to the servers.

You need to ensure that each server always receives the same IP address.

Which type of identifier should you use to create a DHCP reservation for each server?

- A. universally unique identifier (UUID)
- B. fully qualified domain name (FQDN)
- C. NetBIOS name
- D. MAC address

Correct Answer: D

Section:

Explanation:

Reference:

<https://docs.microsoft.com/en-us/powershell/module/dhcpserver/adddhcpserverv4reservation?view=windowsserver2022-ps>

QUESTION 26

You have an on-premises server named Server1 that runs Windows Server. You have an Azure virtual network that contains an Azure virtual network gateway. You need to connect only Server1 to the Azure virtual network. What should you use?

- A. Azure Network Adapter
- B. a Site-to-SiteVPN
- C. an ExpressRoute circuit
- D. Azure Extended Network

Correct Answer: B

Section:

Explanation:

QUESTION 27

You have a server that runs Windows Server and has the DHCP Server role installed. The server has a scope named Scope1 that has the following configurations:

- Address range: 192.168.0.2 to 192.168.1.2M . Mask 255.255.254.0
- Router: 192.168.0.1
- Lease duration: 3 days
- DNS server 172.16.0.254

You have 50 Microsoft Teams Phone devices from the same vendor. All the devices have MAC addresses within the same range. You need to ensure that all the Teams Phone devices that receive a lease from Scope1 have IP addresses in the range of 192.168.1.100 to 192.168.1.200. The solution must NOT affect other DHCP clients that receive IP configurations from Scope1.

What should you create?

- A. a policy
- B. a scope

- C. a fitter
- D. scope options

Correct Answer: A

Section:

Explanation:

Reference:

[https://docs.microsoft.com/en-us/previous-versions/windows/it-pro/windows-server-2012-R2-and-2012/dn425040\(v=ws.11\)](https://docs.microsoft.com/en-us/previous-versions/windows/it-pro/windows-server-2012-R2-and-2012/dn425040(v=ws.11))

QUESTION 28

You have an on-premises Active Directory Domain Services (AD DS) domain that syncs with an Azure Active Directory (Azure AD) tenant. The on-premises network is connected to Azure by using a Site-to-Site VPN. You have the DNS zones shown in the following table.

Name	Location	Description
contoso.com	A domain controller named DC1 on the on-premises network	Provides name resolution on-premises
fabrikam.com	An Azure private DNS zone	Provides name resolution for all Azure virtual networks

You need to ensure that names from fabrikam.com can be resolved from the on-premises network. Which two actions should you perform? Each correct answer presents part of the solution. NOTE: Each correct selection is worth one point.

- A. Create a conditional forwarder for fabrikam.com on DC1.
- B. Create a stub zone for fabrikam.com on DC1.
- C. Create a secondary zone for fabrikam.com on DC1.
- D. Deploy an Azure virtual machine that runs Windows Server. Modify the DNS Servers settings for the virtual network.
- E. Deploy an Azure virtual machine that runs Windows Server. Configure the virtual machine as a DNS forwarder.

Correct Answer: A, E

Section:

Explanation:

Reference:

<https://docs.microsoft.com/en-us/azure/private-link/private-endpoint-dns#on-premises-workloads-using-a-dns-forwarder>

QUESTION 29

Your company has a main office and a branch office. The two offices are connected by using a WAN link. Each office contains a firewall that filters WAN traffic. The network in the branch office contains 10 servers that run Windows Server. All servers are administered from the main office only. You plan to manage the servers in the branch office by using a Windows Admin Center gateway.

On a server in the branch office, you install the Windows Admin Center gateway by using the default settings. You need to configure the firewall in the branch office to allow the required inbound connection to the Windows Admin Center gateway. Which inbound TCP port should you allow?

- A. 443
- B. 3389
- C. 5985
- D. 6516

Correct Answer: A

Section:

QUESTION 30

You have an Azure subscription that contains the following resources:

- An Azure Log Analytics workspace
- An Azure Automation account
- Azure Arc.

You have an on-premises server named Server1 that is onboarded to Azure Arc. You need to manage Microsoft updates on Server1 by using Azure Arc. Which two actions should you perform? Each correct answer presents part of the solution.

NOTE: Each correct selection is worth one point.

- A. Add Microsoft Sentinel to the Log Analytics workspace
- B. On Server1, install the Azure Monitor agent
- C. From the Automation account, enable Update Management for Server1.
- D. From the Virtual machines data source of the Log Analytics workspace, connect Server1.

Correct Answer: B, C

Section:

Explanation:

Reference:

<https://docs.microsoft.com/en-us/azure/cloud-adoption-framework/manage/hybrid/server/bestpractices/arc-update-management>

QUESTION 31

You have an Azure virtual machine named VM1 that has a private IP address only.

You configure the Windows Admin Center extension on VM1.

You have an on-premises computer that runs Windows 11. You use the computer for server management.

You need to ensure that you can use Windows Admin Center from the Azure portal to manage VM1.

What should you configure?

- A. an Azure Bastion host on the virtual network that contains VM1.
- B. a VPN connection to the virtual network that contains VM1.
- C. a network security group (NSG) rule that allows inbound traffic on port 443.
- D. a private endpoint on the virtual network that contains VM1.

Correct Answer: B

Section:

Explanation:

Reference:

<https://docs.microsoft.com/en-us/windows-server/manage/windows-admin-center/azure/managevm>

QUESTION 32

Note: This question is part of a series of questions that present the same scenario. Each question in the series contains a unique solution that might meet the stated goals. Some question sets might have more than one correct solution, while others might not have a correct solution.

After you answer a question in this section, you will NOT be able to return to it. As a result, these questions will not appear in the review screen. Your network contains an Active Directory Domain Services (AD DS) forest. The forest contains three Active Directory sites named Site1, Site2, and Site3. Each site contains two domain controllers. The sites are connected by using DEFAULTSITELINK.

You open a new branch office that contains only client computers.

You need to ensure that the client computers in the new office are primarily authenticated by the domain controllers in Site1. Solution: You create an organization unit (OU) that contains the client computers in the branch office. You configure the Try Next Closest Site Group Policy Object (GPO) setting in a GPO that is linked to the new OU. Does this meet the goal?

- A. Yes
- B. No

Correct Answer: B

Section:

QUESTION 33

You have two servers that have the Hyper-V server role installed. The servers are joined to a failover cluster both servers can connect to the same disk on an iSCSI storage device. You plan to use the iSCSI storage to store highly available Hyper-V virtual machines that will support live migration functionality. You need to configure a storage resource in the failover cluster to store the virtual machines. What should you configure?

- A. a storage pool
- B. attributed File System (DFS) Replication
- C. a mirrored volume
- D. Cluster Shared volumes (CSV)

Correct Answer: D

Section:

QUESTION 34

You have an on-premises server named Server 1 that runs Windows Server. You have an Azure subscription that contains a virtual network named VNet1. You need to connect Server1 to VNet1 by using Azure Network Adapter. What should you use?

- A. the Azure portal
- B. Azure AD Connect
- C. Device Manager
- D. Windows Admin Center

Correct Answer: B

Section:

QUESTION 35

HOTSPOT

Your network contains an Active Directory Domain Services (AD DS) domain named contoso.com.

The network contains the servers shown in the following table.

Name	Role	Domain/workgroup	Operating system
DC1	Active Directory Domain Services, DNS Server	contoso.com	Windows Server
Server1	DHCP Server	contoso.com	Windows Server
Server2	None	contoso.com	Windows Server Core
Server3	None	Workgroup1	Windows Server Core

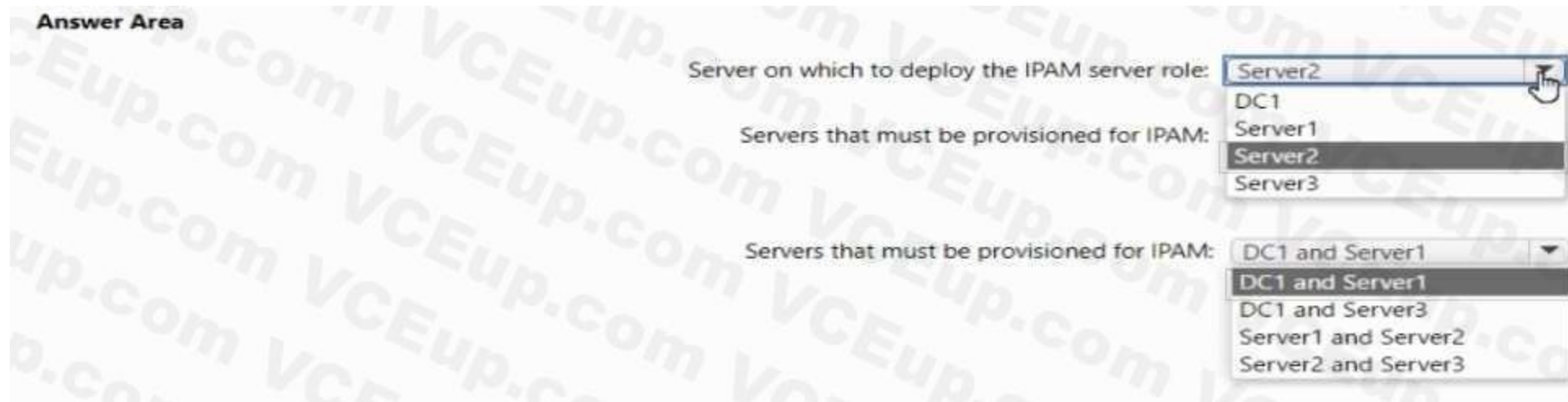
You plan to implement IP Address Management (IPAM).

You need to use the Group Policy based provisioning method for managed servers. The solution must support server discovery. What should you do? To answer, select the appropriate options in the answer area.

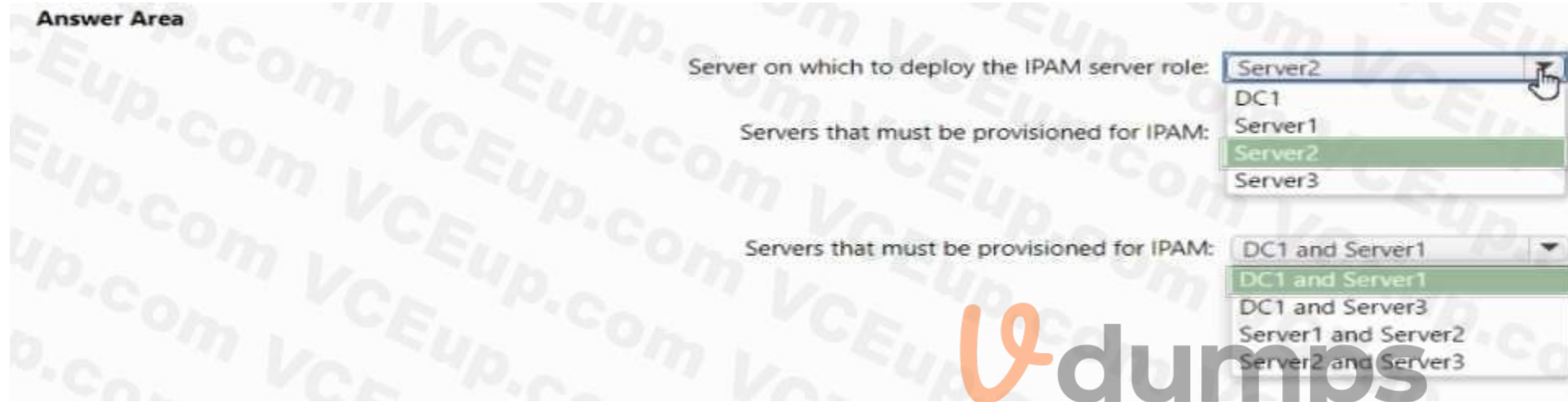
NOTE: Each correct selection is worth one point.

Hot Area:





Answer Area:



Section:

Explanation:

QUESTION 36

DRAG DROP

Your network contains an Active Directory domain, a web app named App1, and a perimeter network. The perimeter network contains a server named Server1 that runs Windows Server. You plan to provide external access to App1.

You need to implement the Web Application Proxy role service on Server1.

Which role should you add to Server1, and which role should you add to the network? To answer, drag the appropriate roles to the correct targets. Each role may be used once, more than once, or not at all. You may need to drag the split bar between panes or scroll to view content.

Select and Place:



Correct Answer:



Section:

Explanation:

QUESTION 37

You have a server named Server1 that runs Windows Server and contains two drives named C and D.

Server1 hosts multiple file shares.

You enable Data Deduplication on drive D and select the General purpose file server workload.

You need to minimize the space consumed by files that were recently modified or deleted.

What should you do?

- A. Run the set-dedupvolume cmdlet and configure the scrubbing job.
- B. Run the Set-DedupSchedule Cmdlet and configure a GarbageCollection job.
- C. Run the set-Dedupvoiume cmdlet and configure the InputOutputScale settings.
- D. Run the Set-DedupSchedule cmdlet and configure the optimization job.

Correct Answer: B

Section:

QUESTION 38

Your network contains an Active Directory Domain Services (AD DS) forest. The forest contains three Active Directory sites named Site1, Site2, and Site3. Each site contains two domain controllers. The sites are connected by using DEFAULTIPSITELINK.

You open a new branch office that contains only client computers.

You need to ensure that the client computers in the new office are primarily authenticated by the domain controllers in Site1. Solution: You configure the Try Next Closest Site Group Policy Object (GPO) setting in a GPO that is linked to Site1. Does this meet the goal?

- A. Yes
- B. No

Correct Answer: B

Section:

QUESTION 39

Your network contains an Active Directory Domain Services (AD DS) forest. The forest contains three Active Directory sites named Site1, Site2, and Site3. Each site contains two domain controllers. The sites are connected by using DEFAULTIPSITELINK.

You open a new branch office that contains only client computers.

You need to ensure that the client computers in the new office are primarily authenticated by the domain controllers in Site1. Solution: You create a new subnet object that is associated to Site1.

Does this meet the goal?

- A. Yes
- B. No

Correct Answer: B



Section:

QUESTION 40

Your network contains an Active Directory Domain Services (AD DS) domain named contoso.com. You need to identify which server is the PDC emulator for the domain. Solution: From a command prompt, you run netdom.exe query fsmo. Does this meet the goal?

- A. Yes
- B. No

Correct Answer: A

Section:

Explanation:

Reference:

<https://activedirectorypro.com/how-to-check-fsmo-roles/>

QUESTION 41

Your network contains an Active Directory Domain Services (AD DS) domain named conioso.com. You need to identify which server is the PDC emulator for the domain. Solution: from Active Directory Users and Computers, you right-click contoso.com in the console tree, and then select Operations Master Does this meet the goal?

- A. Yes
- B. No

Correct Answer: A

Section:

QUESTION 42

Your network contains an Active Directory Domain Services (AD DS) domain named contoso.com. You need to identify which server is the PDC emulator for the domain. Solution: From Active Directory Sites and Services, you right-click Default-First-Site-Name in the console tree, and then select Properties. Does this meet the goal?

- A. Yes
- B. No

Correct Answer: B

Section:

QUESTION 43

Note: This question is part of a series of questions that present the same scenario. Each question in the series contains a unique solution that might meet the stated goals. Some question sets might have more than one correct solution, while others might not have a correct solution. After you answer a question in this section, you will NOT be able to return to it. As a result, these questions will not appear in the review screen. Your network contains an Active Directory Domain Services (AD DS) domain named contoso.com. You need to identify which server is the PDC emulator for the domain. Solution: From Active Directory Domains and Trusts, you right-click Active Directory Domains and Trusts in the console tree, and then select Operations Master. Does this meet the goal?

- A. Yes
- B. No



Correct Answer: B

Section:

QUESTION 44

HOTSPOT

You have a Windows Server container host named Server1 and an Azure subscription.

You deploy an Azure container registry named Registry1 to the subscription.

On Server1, you create a container image named image1.

You need to store imager in Registry1.

Which command should you run on Server1 ? To answer, select the appropriate options in the answer area. NOTE: Each correct selection is worth one point.

Hot Area:



Answer Area:



Section:

Explanation:

<https://docs.microsoft.com/en-us/azure/container-registry/container-registry-get-started-dockercli?tabs=azure-cli#push-the-image-to-your-registry>

QUESTION 45

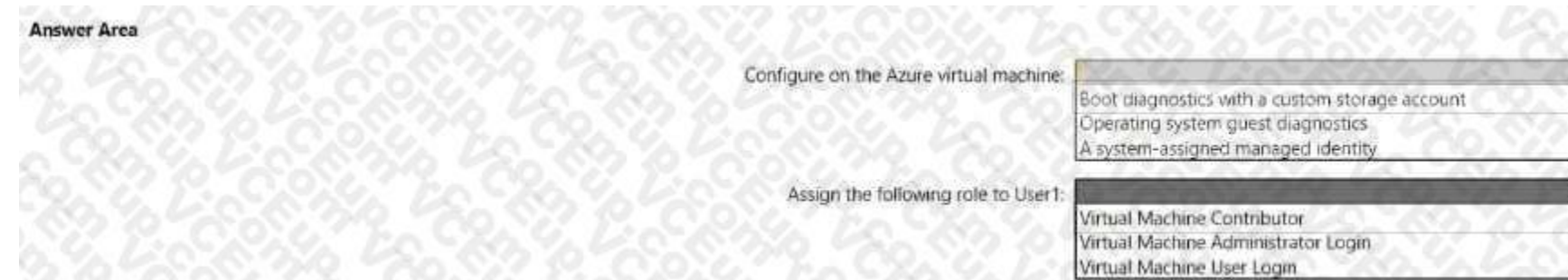
HOTSPOT

You plan to deploy an Azure virtual machine that will run Windows Server.

You need to ensure that an Azure Active Directory (Azure AD) user named user1@contoso.com can connect to the virtual machine by using the Azure Serial Console. What should you do? To answer, select the appropriate options in the answer area.

NOTE: Each correct selection is worth one point.

Hot Area:



Answer Area:

Answer Area

Configure on the Azure virtual machine:

- Boot diagnostics with a custom storage account
- Operating system guest diagnostics
- A system-assigned managed identity

Assign the following role to User1:

- Virtual Machine Contributor
- Virtual Machine Administrator Login
- Virtual Machine User Login

Section:

Explanation:

Answer Area

Configure on the Azure virtual machine:

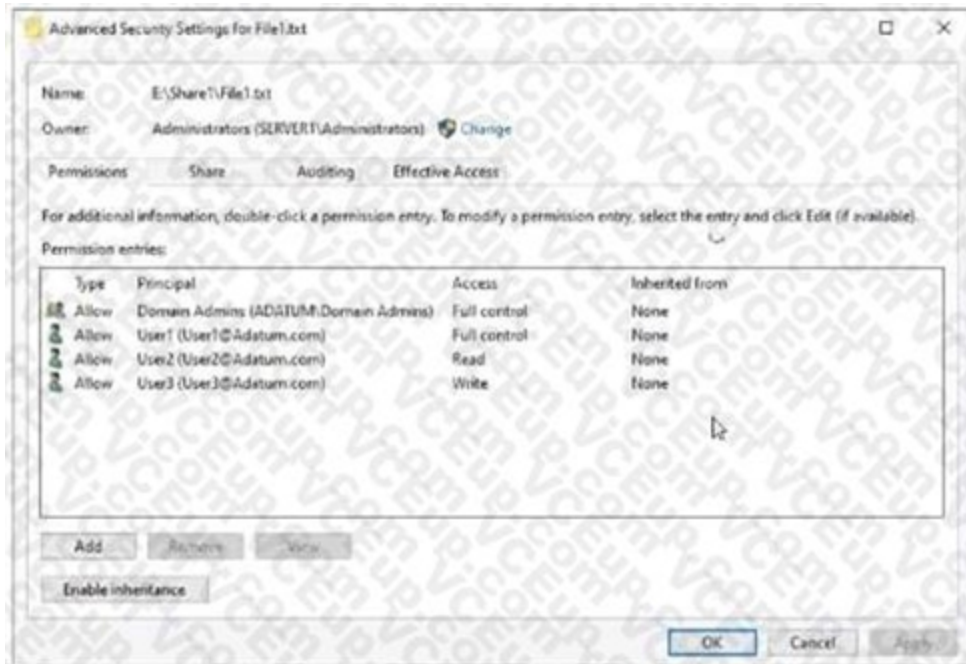
Assign the following role to User1:

QUESTION 46

HOTSPOT

Your network contains an Active Directory Domain Services (AD DS) domain named adatum.com.





The domain contains a server named Server1 and three users named User1, User2 and User3. Server1 contains a shared folder named Share1 that has the following configurations:

```

ShareState      : Online
AvailabilityType : NonClustered
FolderEnumerationMode : AccessBased
CachingMode    : Manual
LeasingMode    : Full
SmbInstance    : Default
CompressData   : False
ContinuouslyAvailable : False
EncryptData    : False
Name           : Share1
Path           : E:\Share1
ShadowCopy     : False
  
```



The share permissions for Share1 are configured as shown in the Share Permissions exhibit. (Click the Share Permissions tab.) Share1 contains a file named File1.txt. The advanced security settings for File1.txt are configured as shown in the File Permissions exhibit. (Click the File Permissions tab.) For each of the following statements, select Yes if the statement is true. Otherwise, select No.

NOTE: Each correct selection is worth one point.

Hot Area:

Answer Area

Statements	Yes	No
When User1 connects to \\Server1.adatum.com\Share1, the user can take ownership of File1.txt.	<input type="radio"/>	<input type="radio"/>
When User2 connects to \\Server1.adatum.com\Share1, File1.txt is visible.	<input type="radio"/>	<input type="radio"/>
When User3 connects to \\Server1.adatum.com\Share1, File1.txt is visible.	<input type="radio"/>	<input type="radio"/>

Answer Area:

Answer Area

Statements

When User1 connects to \\Server1.adatum.com\Share1\, the user can take ownership of File1.txt.	Yes <input type="radio"/>	No <input checked="" type="radio"/>
When User2 connects to \\Server1.adatum.com\Share1\, File1.txt is visible.	Yes <input checked="" type="radio"/>	No <input type="radio"/>
When User3 connects to \\Server1.adatum.com\Share1\, File1.txt is visible.	Yes <input checked="" type="radio"/>	No <input type="radio"/>

Section:

Explanation:

QUESTION 47

HOTSPOT

Your network contains an Active Directory Domain Services (AD DS) domain named adatum.com. The domain contains a server named Server1 and the users shown in the following table.

Name	Member of
User1	Group1
User2	Group2
User3	Group3

Server1 contains a folder named D:\Folder1. The advanced security settings for Folder 1 are configured as shown in the Permissions exhibit. (Click the Permissions tab.)

vdumps

Folder1 is shared by using the following configurations

Group	Permission
Group1	Allow - Change
Group3	Allow - Full Control


```

Path           : D:\Folder1
Name           : Share1
ShareType      : FileSystemDirectory
FolderEnumerationMode : Unrestricted

```

Hot Area:

Answer Area

Statements	Yes	No
User1 can read the files in Share1.	<input type="radio"/>	<input type="radio"/>
User3 can delete files in Share1.	<input type="radio"/>	<input type="radio"/>
If User2 connects to \\Server1.adatum.com from File Explorer.	<input type="radio"/>	<input type="radio"/>

Answer Area:

Answer Area

Statements	Yes	No
User1 can read the files in Share1.	<input checked="" type="radio"/>	<input type="radio"/>
User3 can delete files in Share1.	<input type="radio"/>	<input checked="" type="radio"/>
If User2 connects to \\Server1.adatum.com from File Explorer.	<input checked="" type="radio"/>	<input type="radio"/>

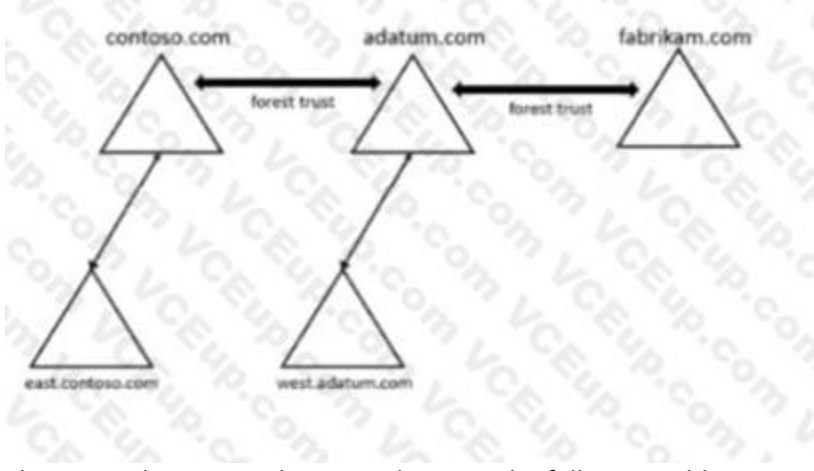
Section:

Explanation:

QUESTION 48

HOTSPOT

Your network contains three Active Directory Domain Services (AD DS) forest as shown in the following exhibit.



The network contains the users shown in the following table.

Name	Domain
User1	east.contoso.com
User2	fabrikam.com

The network contains the security groups shown in the following table.

Name	Type	Domain
Group1	Domain local	west.adatum.com
Group2	Universal	contoso.com
Group3	Universal	east.contoso.com

For each of the following statements, select Yes if the statement is true, Otherwise, select No.

NOTE: Each correct selection is worth one point.

Hot Area:

Answer Area

Statements	Yes	No
You can add User1 to Group1.	<input type="checkbox"/>	<input type="checkbox"/>
You can add User2 to Group3.	<input type="checkbox"/>	<input type="checkbox"/>
You can grant Group2 permissions to the resources in the fabrikam.com domain.	<input type="checkbox"/>	<input type="checkbox"/>

Answer Area:

Answer Area

Statements	Yes	No
You can add User1 to Group1.	<input checked="" type="checkbox"/>	<input type="checkbox"/>
You can add User2 to Group3.	<input type="checkbox"/>	<input checked="" type="checkbox"/>
You can grant Group2 permissions to the resources in the fabrikam.com domain.	<input checked="" type="checkbox"/>	<input type="checkbox"/>

Section:

Explanation:

QUESTION 49

DRAG DROP

You create a new Azure subscription.

You plan to deploy Azure Active Directory Domain Services (Azure AD DS) and Azure virtual machines. You need to ensure that the virtual machines can join Azure AD DS.

Which three actions should perform in sequence? To answer, move the appropriate actions from the list of action of the answer area and arrange them in the correct order.

Select and Place:

Actions	Answer Area
Run the Active Directory Domain Services installation Wizard.	
Create an Azure virtual network.	
Install the Active Directory Domain Services role.	
Install Azure AD Connect.	
Modify the settings of the Azure virtual network.	
Create an Azure AD DS instance.	

Correct Answer:

Actions	Answer Area
Run the Active Directory Domain Services installation Wizard.	
	Create an Azure virtual network.
Install the Active Directory Domain Services role.	Create an Azure AD DS instance.
Install Azure AD Connect.	Modify the settings of the Azure virtual network.

Section:

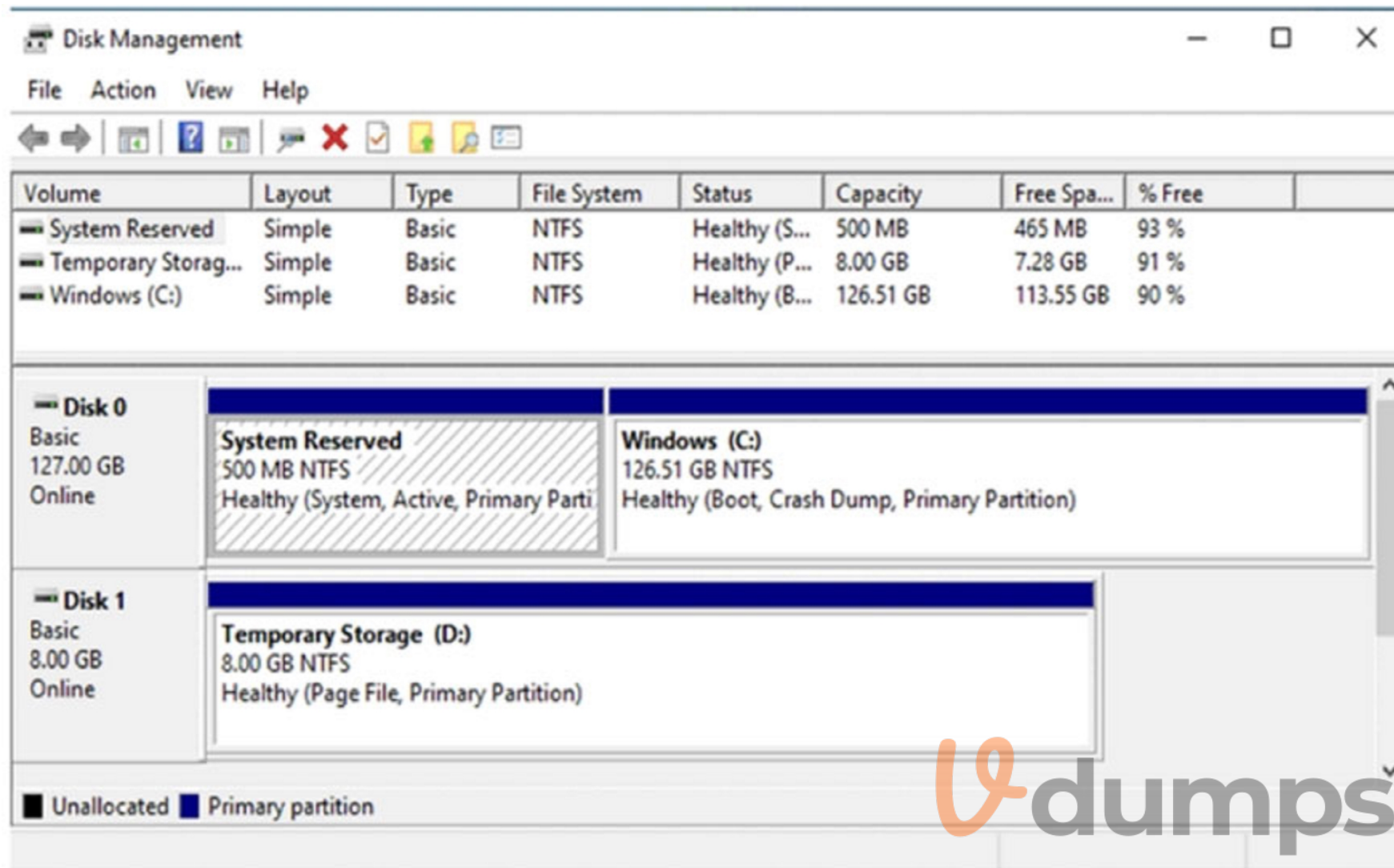
Explanation:

QUESTION 50

DRAG DROP

You create an Azure virtual machine named Server1 that runs Windows Server. Server1 has the disk configuration shown in the following exhibit.





You need to create a new 100-GB volume on Server1.

Which three actions should you perform in sequence? To answer, move the appropriate actions from the list of actions to the answer area and arrange them in the correct order.

Select and Place:

Select and Place:

Actions	Answer Area
Shut down Server1.	
Start Server1.	
Create and attach a new data disk.	
Create a new simple volume.	
Create a new spanned volume.	
Initialize the disk.	

Navigation arrows are present between the Actions and Answer Area columns.

Correct Answer:

Actions

Shut down Server1.
Start Server1.
Create a new spanned volume.

Answer Area

Create and attach a new data disk.
Initialize the disk.
Create a new simple volume.

Section:

Explanation:

Answer Area

1	Start Server1.
2	Create and attach a new data disk.
3	Shut down Server1.

QUESTION 51

HOTSPOT

You plan to deploy an Azure virtual machine that will run Windows Server. The virtual machine will host an Active Directory Domain Services (AD DS) domain controller and a drive named f: on a new virtual disk. You need to configure storage for the virtual machine. The solution must meet the following requirements:

- Maximize resiliency for AD DS.
- Prevent accidental data loss.

How should you configure the storage? To answer, select the appropriate options in the answer area. NOTE: Each correct selection is worth one point.

Hot Area:

Answer Area

Volume for the AD DS database:

Caching configuration for the volume that hosts the database:

Answer Area:



Section:

Explanation:

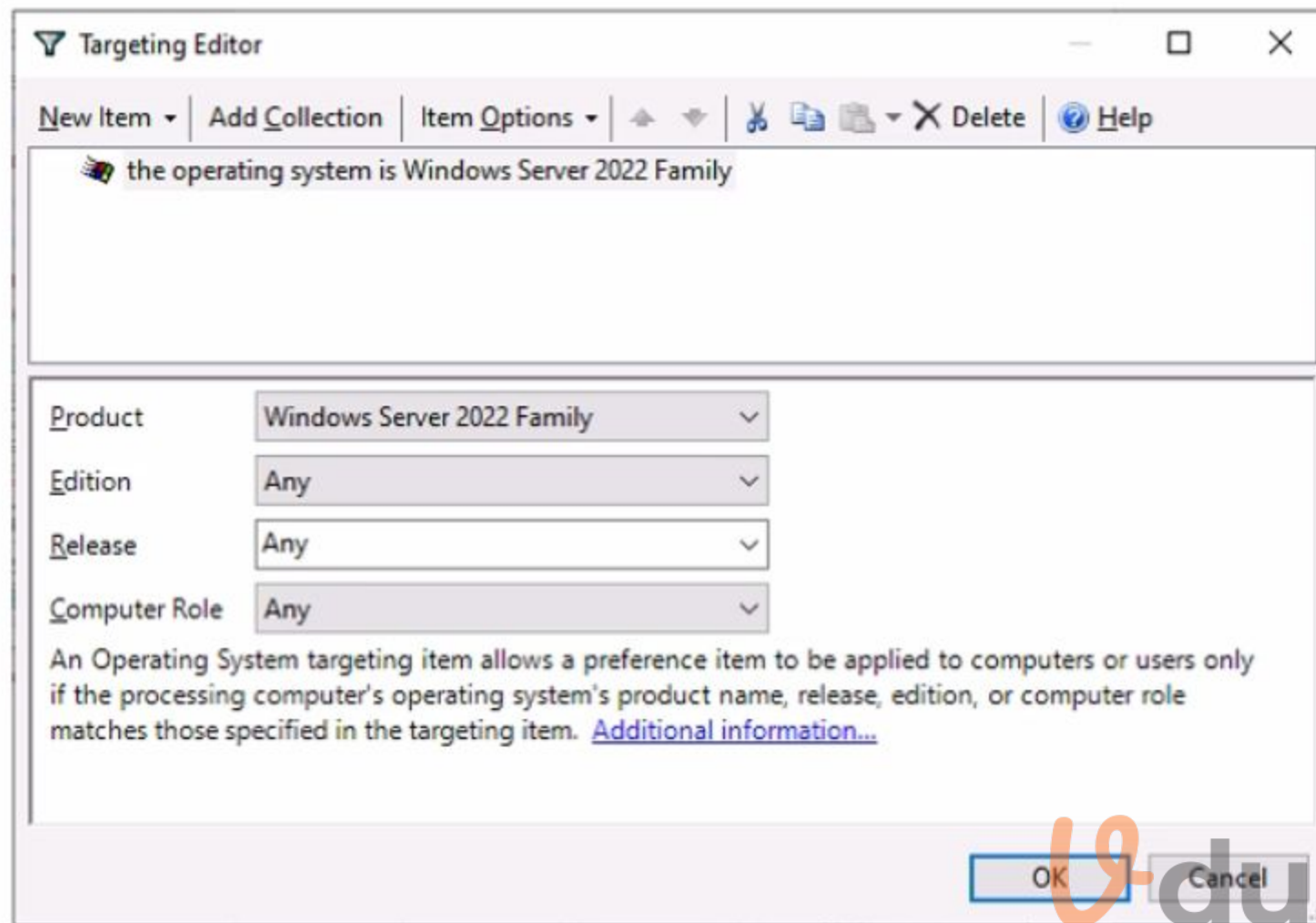
QUESTION 52

Your network contains an Active Directory domain named contoso.com. The domain contains the computers shown in the following table.

Name	Operating system
Computer1	Windows 11
Server1	Windows Server 2016
Server2	Windows Server 2019
Server3	Windows Server 2022

On Server3, you create a Group Policy Object (GPO) named GP01 and link GPO1 to contoso.com. GP01 includes a shortcut preference named Shortcut1 that has item-level targeting configured as shown in the following exhibit.





To which computer will Shortcut1 be applied?

- A. Server3 only
- B. Computer1 and Server3 only
- C. Server2 and Server3 only
- D. Server1, Server2, and Server3 only

Correct Answer: A

Section:

QUESTION 53

You have an on-premises Active Directory Domain Services (AD DS) domain that syncs with a Microsoft Entra tenant.

You deploy an app that adds custom attributes to the domain.

From Azure Cloud Shell, you discover that you cannot query the custom attributes of users.

You need to ensure that the custom attributes are available in Microsoft Entra ID.

Which task should you perform from Microsoft Entra Connect first?

- A. Refresh directory schema
- B. Configure device options
- C. Customize synchronization options
- D. Manage federation

Correct Answer: C

Section:

QUESTION 54

You have four testing devices that are configured with static IP addresses as shown in the following table.

Name	IP address
TestDevice1	192.168.16.242
TestDevice2	192.168.16.243
TestDevice3	192.168.16.244
TestDevice4	192.168.16.245

The test devices are turned on once a month.

You need to prevent Server1 from assigning the IP addresses allocated to the test devices to other devices when the test devices are offline. The solution must minimize administrative effort.

What should you do?

- A. Create an exclusion range.
- B. Create reservations.
- C. Configure the Scope options.
- D. Create a policy.

Correct Answer: B

Section:

QUESTION 55

HOTSPOT

Your network contains a two-domain on-premises Active Directory Domain Services (AD DS) forest named Contoso.com. The forest contains the domain controllers shown in the following table.



Name	Description	Domain	Active Directory site
DC1	Forest-wide and domain-wide FSMO role holder	contoso.com	Hub
DC2	Domain-wide FSMO role holder	child.contoso.com	Site1
RODC3	Read-only domain controller (RODC)	contoso.com	Site2

You create an Active Directory site named Site3. Site1, Site2 and Site3 each has a dedicated site link to the Hub site. In Site3, you install a new server named Server1.

You need to promote Server1 to an ROOC in child.contoso.com by using the install from Media (IFM) option. The solution must minimize network traffic. What should you do? To answer select the appropriate options in the answer area.

NOTE: Each correct selection is worth one point.

Hot Area:



Answer Area:



Section:

Explanation:

QUESTION 56

HOTSPOT

You have a Group Policy Object (GPO) named GPO1 that contains user settings only.

You plan to apply GPO1 to a global security group named Group1.

You link GPO1 to the domain, and you remove all the permissions granted to the Authenticated Users group. You need to configure permissions for GPO1 to meet the following requirements.

- GPO1 must apply only to the users in Group 1.
- The solution must use the principle of least privilege

Hot Area:

Answer Area

Group1:

- Apply group policy and Read
- Apply group policy only
- Read only

Domain Computers:

- Apply group policy and Read
- Apply group policy only
- Read only

Answer Area:

Answer Area

Group1:

- Apply group policy and Read
- Apply group policy only
- Read only

Domain Computers:

- Apply group policy and Read
- Apply group policy only
- Read only

Section:

Explanation:



QUESTION 57

HOTSPOT

You have a server named Server1 that runs Windows Server Server1 has a just-a-bunch-of-disks (JBOD) enclosure attached.

You plan to create a storage pool on Server1 and a virtual disk that will use a mirror layout.

You are considering whether to use a two-way or a three-way mirror layout.

What is the minimum number of disks required for each type of minor layout? To answer, select the appropriate options in the answer area. NOTE: Each correct selection is worth one point.

Hot Area:



Answer Area:



Section:

Explanation:

QUESTION 58

Your network contains a single-domain Active Directory Domain Services (AD DS) forest named contoso.com. The forest contains the servers shown in the following exhibit table.

Name	Description
DC1	Domain controller
Server1	Member server

You plan to install a line-of-business (LOB) application on Server1. The application will install a custom windows services. A new corporate security policy states that all custom Windows services must run under the context of a group managed service account (gMSA). You deploy a root key. You need to create, configure, and install the gMSA that will be used by the new application.

Which two actions should you perform? Each correct answer presents part of the solution.

NOTE: Each correct selection is worth one point.

- A. On Server1, run the install-ADServiceAccount cmdlet.
- B. On DC1, run the New-ADServiceAccount cmdlet.
- C. On DC1, run the Set_ADComputer cmdlet.
- D. ON DC1, run the Install-ADServiceAccount cmdlet.
- E. On Server1, run the Get-ADServiceAccount cmdlet.

Correct Answer: A, B

Section:

QUESTION 59

You have an Azure virtual machine named Server1 that runs a network management application.

Server1 has the following network configuration.

* Network interface.Nic1

* IP address 10.1.1.1/24

* Connected to: Vnet1/Subnet1

You need connect Server1 to an additional subnet named Vnet1/Subnet2.

What should you do?

- A. Create a private endpoint on Subnet2
- B. Add a network interface to server1.
- C. Modify the IP configurations of Nic1.
- D. Add an IP configuration to Nic1.

Correct Answer: B

Section:

QUESTION 60

Your network contains an Active Directory Domain Services (AD DS) forest. The forest contains three domains. Each domain contains 10 domain controllers. You plan to store a DNS zone in a custom Active Directory partition.

You need to create the Active Directory partition for the zone. The partition must replicate to only four of the domain controllers. What should you use?

- A. ntdsutil.exe
- B. Active Directory Sites and Services
- C. New-ADObject
- D. Active Directory Administrative Center

Correct Answer: A

Section:

QUESTION 61

You have an on-premises Active Directory Domain Services (AD DS) domain that syncs with an Azure Active Directory (Azure AD) tenant Group writeback is enabled in Azure AD Connect. The AD DS domain contains a server named Server1 Server 1 contains a shared folder named share1.

You have an Azure Storage account named storage2 that uses Azure AD-based access control. The storage2 account contains a share named shared You need to create a security group that meets the following requirements:

- Can contain users from the AD DS domain
- Can be used to authorize user access to share 1 and share2

What should you do?



- A. in the AD DS domain, create a universal security group
- B. in the Azure AD tenant create a security group that has assigned membership
- C. in the Azure AD Tenant create a security group that has dynamic membership.
- D. in the Azure AD tenant create a Microsoft 365 group

Correct Answer: B

Section:

QUESTION 62

You have a server named Server1 that runs Windows Server.

You plan to host applications in Windows containers.

You need to configure Server1 to run containers. What should you install?

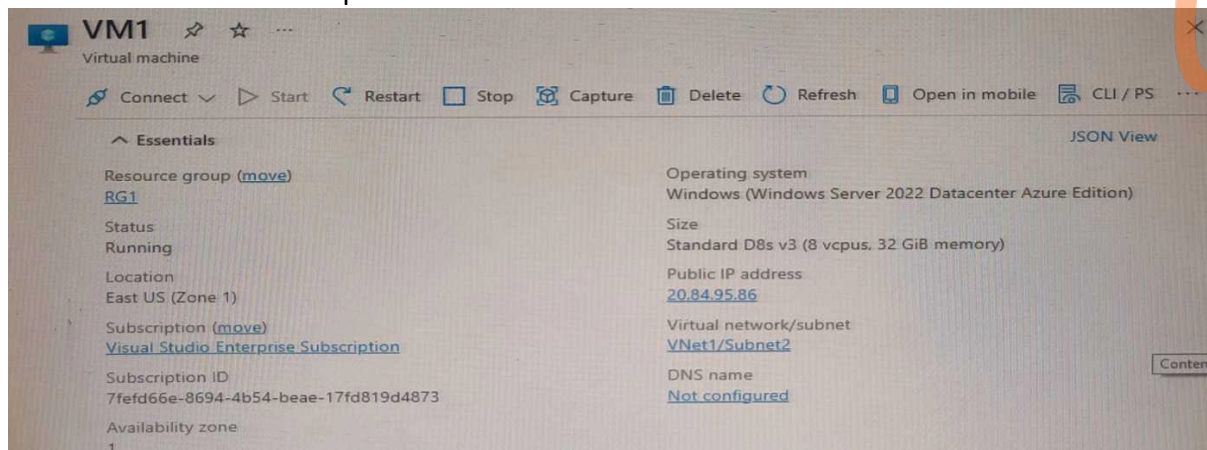
- A. Windows Admin Center
- B. the Windows Subsystem for Linux
- C. Doctor
- D. Hyper-V

Correct Answer: C

Section:

QUESTION 63

You have an Azure subscription that contains a virtual machine named VM1 as shown in the following exhibit.



The subscription has the disks shown in the following table.

Name	Resource group	Location	Availability zone
Disk1	RG1	East US	None
Disk2	RG2	East US	1
Disk3	RG1	Central US	None
Disk4	RG1	Central US	1

Which disks can you attach as data disks to VM1?

- A. Disk2 only
- B. Disk4 only
- C. Disk1 and Disk2 only
- D. Disk2 and Disk4 only

- E. Disk1, Disk3, and Disk4 only
- F. Disk1, Disk2, Disk3. and Disk4

Correct Answer: C

Section:

QUESTION 64

Your network contains an Active Directory Domain Services (AD DS) domain. The domain contains a user named User1 and the servers shown in the following table.

Name	Server role	DHCP scope
Server1	DHCP Server	Scope1, Scope2
Server2	DHCP Server	Scope3, Scope4

You need to ensure that User1 can manage only Scope1 and Scope3. What should you do?

- A. Add User1 to the DHCP Administrators group on Server1 and Server2.
- B. Implement IP Address Management (IPAM).
- C. Add User1 to the DHCP Administrators domain local group.
- D. Implement Windows Admin Center and add connections to Server1 and Server2.

Correct Answer: B

Section:

QUESTION 65

HOTSPOT

Your on-premises network contains a server named Server1 and uses an IP address space of 192.168.10.0/24. You have an Azure virtual network that contains a subnet named Subnet1. Subnet1 uses an IP address space of 192.168.10.0/24. You need to migrate Server1 to Subnet1. You must use Azure Extended Network to maintain the existing IP address of Server1. What is the minimum number of virtual machines that you should deploy? To answer, select the appropriate options in the answer area. NOTE: Each correct selection is worth one point

Hot Area:

Answer Area

Virtual machines that run Windows Server 2022 Azure Edition:

Virtual machines that run Windows Server 2019 or Windows Server 2022:

Answer Area:

Answer Area

Virtual machines that run Windows Server 2022 Azure Edition: 0

Virtual machines that run Windows Server 2019 or Windows Server 2022: 1

Section:
Explanation:

QUESTION 66
HOTSPOT

You have a server named Server1 that has the Hyper-V server role installed. Server1 hosts the virtual machines shown in the following exhibit.

Name	Configuration Version	State	CPU Usage	Uptime
VM1	10.0	Running	2%	03:09:45
VM2	9.0	Running	2%	03:07:02
VM3	8.0	Running	2%	03:06:02

Use the drop-down menus to select the answer choice that completes each statement based on the information presented in the graphic. NOTE: Each correct selection is worth one point.

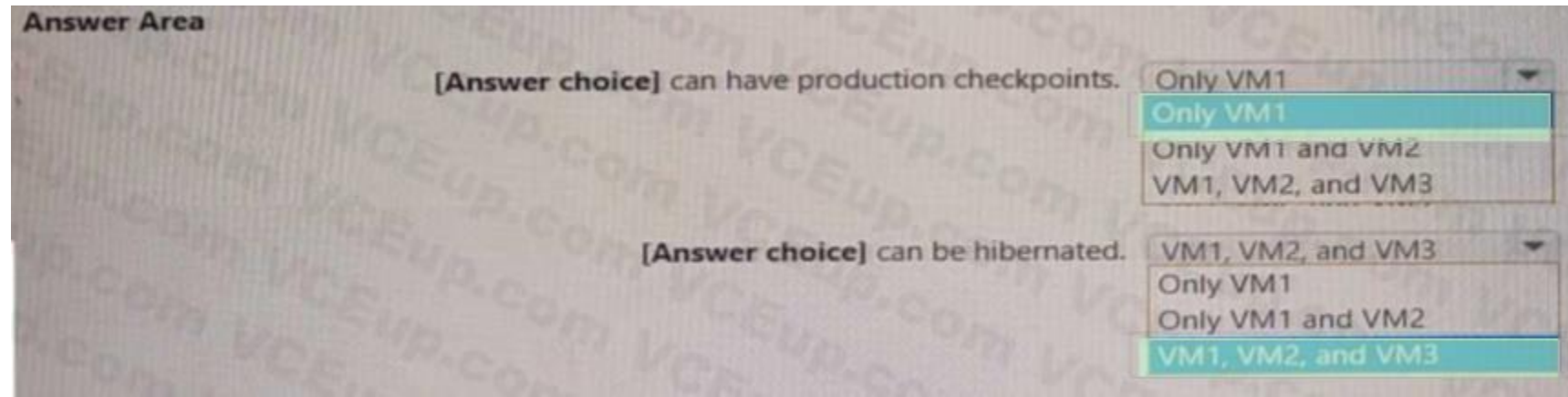
Hot Area:

Answer Area

[Answer choice] can have production checkpoints. Only VM1

[Answer choice] can be hibernated. VM1, VM2, and VM3

Answer Area:



Section:

Explanation:

QUESTION 67

HOTSPOT

You have a server named Server1 that runs Windows Server and contains three volumes named C, D, and E. Files are stored on Server1 as shown in the following table.

Name	On volume	Size
File1	C	500 KB
File2	D	10 KB
File3	D	1 MB

For volume D, Data Deduplication is enabled and set to General purpose file server.

You perform the following actions:

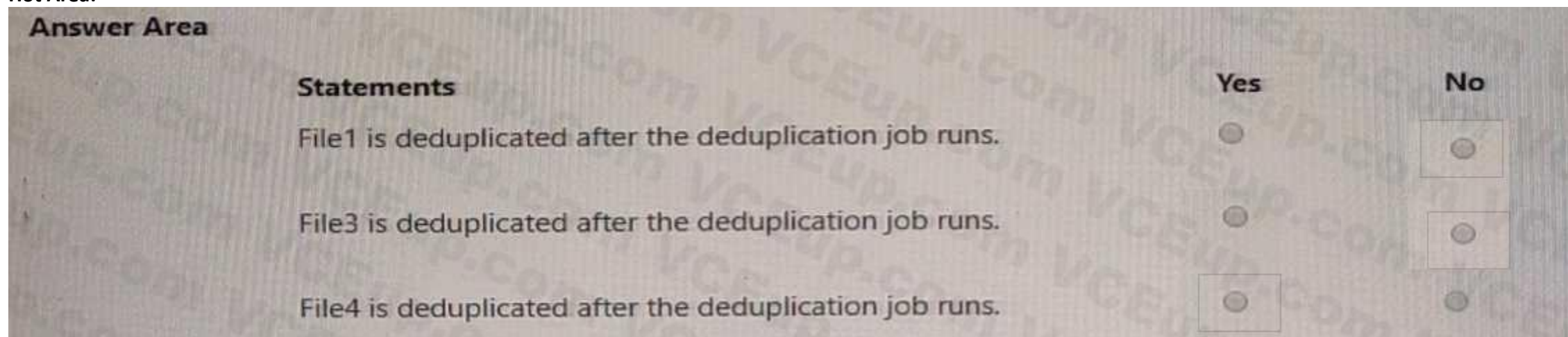
- Move File1 to volume D.
- Copy File2 to volume D and name the copy File4.
- Move File3 to volume E

For each of the following statements, select Yes if the statement is true. Otherwise, select No. NOTE:

Each correct selection is worth one point.



Hot Area:



Answer Area:

Answer Area

Statements	Yes	No
File1 is deduplicated after the deduplication job runs.	<input type="radio"/>	<input checked="" type="radio"/>
File3 is deduplicated after the deduplication job runs.	<input type="radio"/>	<input checked="" type="radio"/>
File4 is deduplicated after the deduplication job runs.	<input checked="" type="radio"/>	<input type="radio"/>

Section:

Explanation:

QUESTION 68

DRAG DROP

You deploy a single-domain Active Directory Domain Services (AD DS) forest named contoso.com.

You deploy a server to the domain and configure the server to run a service.

You need to ensure that the service can use a group managed service account (gMSA) to authenticate. Which three PowerShell cmdlets should you run in sequence? To answer, move the appropriate cmdlets from the list of cmdlets to the answer area and arrange them in the correct order.

Select and Place:

Cmdlets	Answer Area
Add-ADComputerServiceAccount	
Set-KdsConfiguration	
Add-ADGroupMember	
Add-KdsRootKey	
New-ADServiceAccount	
Install-ADServiceAccount	

Note: The image shows a drag-and-drop interface with arrows indicating movement between the Cmdlets column and the Answer Area column.

Correct Answer:

Cmdlets	Answer Area
Add-ADComputerServiceAccount	Add-KdsRootKey
Set-KdsConfiguration	New-ADServiceAccount
Add-ADGroupMember	Install-ADServiceAccount

Section:

Explanation:

QUESTION 69

DRAG DROP

You have an Azure subscription. The subscription contains a virtual machine named VM1 that runs Windows Server. VM1 contains a 128-GB operating system disk.

You need to increase the size of volume C on VM1 to 250 GB.

Which four actions should you perform in sequence? To answer, move the appropriate actions from the list of actions to the answer area and arrange them in the correct order.

Select and Place:

Actions	Answer Area
Resize VM1.	
Redeploy VM1.	
Stop VM1.	
Resize the operating system disk.	
Start VM1.	
Resize volume C.	

Correct Answer:

Actions	Answer Area
Resize VM1.	Stop VM1.
Redeploy VM1.	Resize the operating system disk.
	Start VM1.
	Resize volume C.

Section:

Explanation:

QUESTION 70

You have an Azure subscription. The subscription contains a virtual machine named VM1 that runs Windows Server.

You build an app named App1.

You need to configure continuous integration and continuous deployment (CI/CD) of App1 to VM1.

What should you create first?

- A. a managed identity
- B. an App Service Environment
- C. an Azure Automation account
- D. an Azure DevOps organization

Correct Answer: D

Section:

QUESTION 71

Your network contains an Active Directory Domain Services (AD DS) domain. The domain contains the resources shown in the following table.

Name	Description
CLIENT1	Client computer that runs Windows
DC1	Domain controller
Server1	File server
Server2	File server

You plan to replicate a volume from Server1 to Server2 by using Storage Replica.

You need to configure Storage Replica.

Where should you install Windows Admin Center?

- A. Server 1
- B. CLIENT1
- C. DC1
- D. Server2

Correct Answer: A

Section:

QUESTION 72

DRAG DROP

You have a server named Server 1 that runs Windows Server and has the Hyper-V server role installed.

Server1 hosts a virtual machine named VM1. Server1 has an NV Me storage device that is assigned to VM1 by using Discrete Device Assignment.

You need to make the device available to the host.

Which four actions should you perform in sequence? To answer, move the appropriate actions from the list of actions to the answer area and arrange them in the correct order.

Select and Place:



Actions	Answer Area
From VM1, disable the device by using Device Manager.	
From Server1, stop VM1.	
From Server1, run the Remove-VMAssignableDevice cmdlet.	
From Server1, run the Mount-VMHostAssignableDevice cmdlet.	
From Server1, enable the device by using Device Manager.	

Correct Answer:

Actions	Answer Area
From VM1, disable the device by using Device Manager.	From Server1, stop VM1.
	From Server1, run the Remove-VMAssignableDevice cmdlet.
	From Server1, run the Mount-VMHostAssignableDevice cmdlet.
	From Server1, enable the device by using Device Manager.

Section:

Explanation:

QUESTION 73

You have an on-premises Active Directory Domain Services (AD DS) domain named contoso.com that syncs with Azure AD by using Azure AD Connect. You enable password protection for contoso.com. You need to prevent users from including the word Contoso as part of their password. What should you use?

- A. the Azure Active Directory admin center
- B. Active Directory Users and Computers
- C. Synchronization Service Manager
- D. Windows Admin Center

Correct Answer: D

Section:

QUESTION 74

HOTSPOT

You have an Active Directory Domain Services (AD DS) domain that contains a group named Group1. You need to create a group managed service account (gMSA) named Account1. The solution must ensure that Group1 can use Account1. How should you complete the script? To answer, select the appropriate options in the answer area, NOTE: Each correct selection is worth one point.

Hot Area:

Answer Area

New-ADServiceAccount Add-ADComputerServiceAccount Install-ADServiceAccount New-ADObject New-ADServiceAccount	"Account1" -DNSHostName "website.contoso.com" -	-PrincipalsAllowedToDelegateToAccount -AuthenticationPolicy -Instance -PrincipalsAllowedToDelegateToAccount -PrincipalsAllowedToRetrieveManagedPassword	"Group1"
--	---	---	----------

Answer Area:

Answer Area

New-ADServiceAccount Add-ADComputerServiceAccount Install-ADServiceAccount New-ADObject New-ADServiceAccount	"Account1" -DNSHostName "website.contoso.com" -	-PrincipalsAllowedToDelegateToAccount -AuthenticationPolicy -Instance -PrincipalsAllowedToDelegateToAccount -PrincipalsAllowedToRetrieveManagedPassword	"Group1"
--	---	---	----------

Section:

Explanation:

QUESTION 75

HOTSPOT

Your on-premises network contains an Active Directory domain named contoso.com and 500 servers that run Windows Server. All the servers are Azure Arc-enabled and joined to contoso.com.

You need to implement PowerShell Desired State Configuration (DSC) on all the servers. The solution must minimize administrative effort.

Where should you store the DSC scripts, and what should you use to apply DSC to the servers? To answer, select the appropriate options in the answer area.

NOTE: Each correct selection is worth one point.

Hot Area:

Answer Area

Store in:	An Azure Automation account An Azure App Configuration store An Azure Automation account An Azure Policy definition
Use:	Guest configuration in Azure Policy A Group Policy Object (GPO) in Active Directory Domain Services (AD DS) Azure virtual machine extensions Guest configuration in Azure Policy

Answer Area:

Answer Area

Store in:

Use:

Section:

Explanation:

QUESTION 76

You have an Azure virtual machine named Served that runs a network management application. Server1 has the following network configurations:

- * Network interface: Nic1
- * IP address. 10.1.1.1/24
- * Connected to: VnetVSubnet1

You need to connect Server1 to an additional subnet named Vnet1/Subnet2.

What should you do?

- A. Modify the IP configurations of Nic1.
- B. Add a network interface to Server1.
- C. Add an IP configuration to Nic1.
- D. Create a private endpoint on Subnet2

Correct Answer: D

Section:

QUESTION 77

HOTSPOT

You have a Windows Server 2022 container host named Host1 and a container registry that contains the container images shown in the following table.

Name	Container base image OS version
Image1	Windows Server 2022
Image2	Windows Server 2019

You need to run the containers on Host1

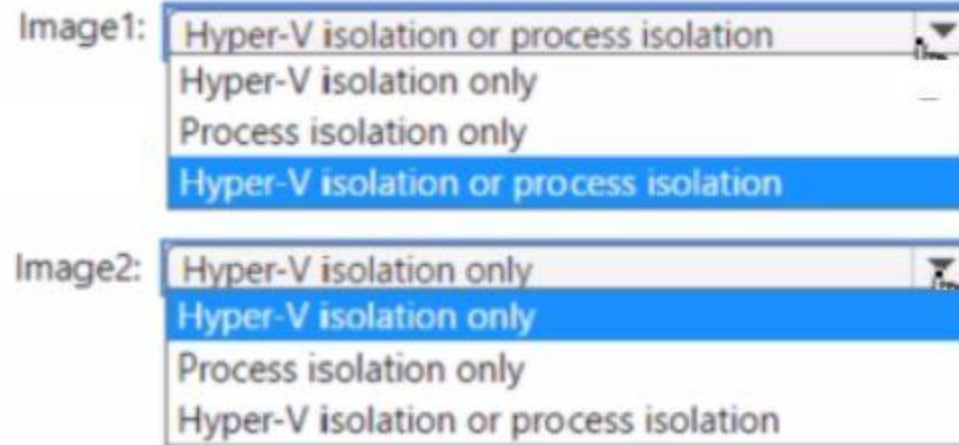
Which isolation mode can you use for each image? To answer, select the appropriate options in the answer area.

NOTE: Each correct selection is worth one point.

Hot Area:

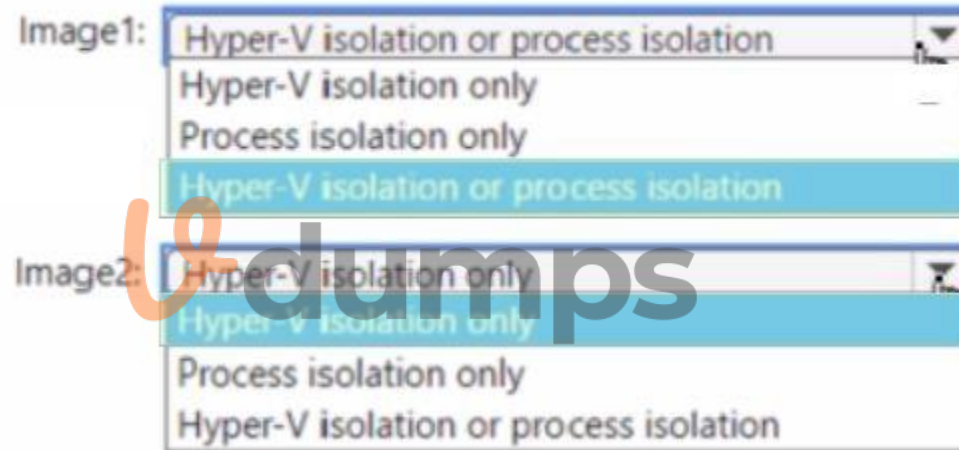


Answer Area



Answer Area:

Answer Area



Section:

Explanation:

QUESTION 78

Your network contains an on-premises Active Directory Domain Services (AD DS) domain named contoso.com. The domain contains three servers that run Windows Server and have the Hyper-V server role installed. Each server has a Switch Embedded Teaming (SET) team.

You need to verify that Remote Direct Memory Access (RDMA) and required Windows Server settings are configured properly on each server to support a failover cluster.

What should you use?

- A. the validate-DCB cmdlet
- B. Server Manager
- C. the Get-NetAdapter cmdlet
- D. Failover Cluster Manager

Correct Answer: A

Section:

QUESTION 79

Your network contains an Active Directory Domain Services (AD DS) domain.
You plan to use Active Directory Administrative Center to create a new user named User1.
Which two attributes are required to create User1? Each correct answer presents part of the solution.
NOTE: Each correct selection is worth one point.

- A. Password
- B. Profile path
- C. User SamAccountName logon
- D. Full name
- E. First name
- F. User UPN logon

Correct Answer: A, C
Section:

QUESTION 80
HOTSPOT

Your on-premises network contains an Active Directory Domain Services (AD DS) domain. The domain contains the servers shown in the following table.
The domain controllers do NOT have internet connectivity.
You plan to implement Azure AD Password Protection for the domain.
You need to deploy Azure AD Password Protection agents. The solution must meet the following requirements:

- * All Azure AD Password Protection policies must be enforced.
- * Agent updates must be applied automatically.
- * Administrative effort must be minimized.

What should you do? To answer select the appropriate options in the answer area.
NOTE: Each correct selection is worth one point.



Hot Area:
Answer Area

Install the Azure AD Password Protection agent on:

DC1 and DC2 only	▼
DC1 only	
DC1 and DC2 only	
DC1, DC2, and RODC1	

Install the Azure AD Password Protection Proxy on:

Server1	▼
DC1	
DC2	
RODC1	
Server1	
Server2	

Answer Area:

Answer Area

Install the Azure AD Password Protection agent on:

DC1 and DC2 only
DC1 only
DC1 and DC2 only
DC1, DC2, and RODC1

Install the Azure AD Password Protection Proxy on:

Server1
DC1
DC2
RODC1
Server1
Server2

Section:

Explanation:

QUESTION 81

You have an Active Directory Domain Services (AD DS) domain. The domain contains a member server named Server1 that runs Windows Server. You need to ensure that you can manage password policies for the domain from Server1. Which command should you run first on Server1?

- A. Install-Windows Feature RSAT-AO-PowerShell
- B. Install-Windows Feature 6PHC
- C. Install-Windows Feature RSAT-AD-Tool\$
- D. Install-windows Feature RSAT-AWIMS

Correct Answer: C

Section:

QUESTION 82

Your network contains an Active Directory forest. The forest contains two domains named contoso.com and east.contoso.com and the servers shown in the following table.

Name	Domain	Configuration
DC1	contoso.com	Domain controller
Server1	contoso.com	Member server
DC2	east.contoso.com	Domain controller
Server2	east.contoso.com	Member server

Contoso.com contains a user named User1.

You add User1 to the built-in Backup Operators group in contoso.com.

Which servers can User1 back up?

- A. DC1 only
- B. Server1 only



- C. DC1 and DC2 only
- D. DC1 and Server1 only
- E. DC1, DC2, Server1, and Server2

Correct Answer: A

Section:

QUESTION 83

Your network contains a DHCP server.

You plan to add a new subnet and deploy Windows Server to the subnet.

You need to use the server as a DHCP relay agent.

Which role should you install on the server?

- A. Network Policy and Access Services
- B. Remote Access
- C. Network Controller
- D. DHCP Server

Correct Answer: B

Section:

QUESTION 84

You have an on-premises server named Server1 that runs Windows Server.

You have an Azure subscription that contains a virtual network named VNet1.

You need to connect Server1 to VNet1 by using Azure Network Adapter.

What should you use?

- A. Azure AD Connect
- B. Device Manager
- C. the Azure portal
- D. Windows Admin Center

Correct Answer: D

Section:

QUESTION 85

You have an Azure virtual machine named VM1 that runs Windows Server.

You need to ensure that administrators request access to VM1 before establishing a Remote Desktop connection.

What should you configure?

- A. Azure Front Door
- B. Microsoft Defender for Cloud
- C. Azure AD Privileged Identity Management (PIM)
- D. a network security group (NSG)

Correct Answer: B

Section:



QUESTION 86

DRAG DROP

You have an on-premises server named Server 1 that runs Windows Server. Server 1 contains a file share named Share 1.

You have an Azure subscription.

You perform the following actions:

- * Deploy Azure File Sync
- * Install the Azure File Sync agent on Server1.
- * Register Server1 with Azure File Sync

You need to ensure that you can add Share1 as an Azure File Sync server endpoint.

Which three actions should you perform in sequence? To answer, move the appropriate actions from the list of actions to the answer area and arrange them in the correct order.

Select and Place:

Actions	Answer Area
Deploy the Azure Connected Machine agent.	
Deploy an Azure VPN gateway.	
Create a private endpoint.	
Create an Azure Storage account.	
Create an Azure file share.	
Create a sync group.	

Correct Answer:

Actions	Answer Area
Deploy the Azure Connected Machine agent.	Create an Azure Storage account.
Deploy an Azure VPN gateway.	Create an Azure file share.
Create a private endpoint.	Create a sync group.

Section:

Explanation:

Create an Azure Storage account.

Create an Azure file share.

Create a sync group.

QUESTION 87

HOTSPOT

You have an Active Directory Domain Services (AD DS) domain that contains the member servers shown in the following table.

Name	Operating system	Data Deduplication role service
Server1	Windows Server 2019	Installed
Server2	Windows Server 2022	Not installed
Server3	Windows Server 2022	Installed

Server3 contains a data disk named Disk1 that has Data Deduplication installed. Disk1 contains the files shown in the following table.

Name	Size
File1.txt	5 KB
File2.docx	800 KB
File3.sys	2 MB
File4.bmp	5 GB

Server3 fails.

You need to recover the files on Disk1.

Which files can you recover if you attach Disk1 to Server 1, and which files can you recover if you attach Disk1 to Server2? To answer, select the appropriate options in the answer area.

NOTE: Each correct selection is worth one point.

Hot Area:

Answer Area



Server1:


- File1.txt only
- File1.txt and File2.docx only
- File1.txt and File3.sys only
- File1.txt, File2.docx, File3.sys, and File4.bmp
- No files can be recovered.


Server2:

- File1.txt only
- File1.txt and File2.docx only
- File1.txt and File3.sys only
- File1.txt, File2.docx, File3.sys, and File4.bmp
- No files can be recovered.

Answer Area:

Answer Area

Server1: 
File1.txt only
File1.txt and File2.docx only
File1.txt and File3.sys only
File1.txt, File2.docx, File3.sys, and File4.bmp
No files can be recovered.

Server2: 
File1.txt only
File1.txt and File2.docx only
File1.txt and File3.sys only
File1.txt, File2.docx, File3.sys, and File4.bmp
No files can be recovered.

Section:

Explanation:

QUESTION 88

DRAG DROP

You have a disaggregated cluster deployment. The deployment contains a scale-out file server (SOFS) cluster that runs Windows Server and a compute cluster that has the Hyper-V role enabled.

You need to implement Storage Quality of Service (QoS). The solution must ensure that you can control the bandwidth usage between the SOFS cluster and the Hyper-V cluster.

Which cmdlet should you run on each cluster? To answer, drag the appropriate cmdlets to the correct clusters. Each cmdlet may be used once, more than once, or not at all. You may need to drag the split bar between panes or scroll to view content.

NOTE: Each correct selection is worth one point.

Cmdlets

New-StorageQosPolicy

Set-VMHardDiskDrive

Set-VMsan

Answer Area

SOFS:

Hyper-V:

Answer:

Cmdlets

New-StorageQosPolicy

Set-VMHardDiskDrive

Set-VMsan

Answer Area

SOFS:

Hyper-V:

Select and Place:

Cmdlets

New-StorageQosPolicy

Set-VMHardDiskDrive

Set-VMsan

Answer Area

SOFS:

Hyper-V:

Correct Answer:

Cmdlets

Set-VMsan

Answer Area



SOFS:

Hyper-V:

Section:

Explanation:

QUESTION 89

You have a server named Server1 that runs Windows Server and contains a file share named Share1.

You need to prevent users from stoning MP4 files in Share1. The solution must ensure that the users can store other types of files in the share.

What should you configure on Server1?

- A. File Management Tasks
- B. NTFS Quotas
- C. NTFS permissions
- D. file screens

Correct Answer: D

Section:

QUESTION 90

SIMULATION LAB 9

You plan to create group managed service accounts (gMSAs).

You need to configure the domain to support the creation of gMSAs.

A. See the solution of this Task below

Correct Answer: A

Section:

Explanation:

To configure the domain to support the creation of gMSAs, you need to perform the following steps:

On a domain controller or a computer that has the Remote Server Administration Tools (RSAT) installed, open PowerShell as an administrator and run the following command to install the Active Directory module:

```
Install-WindowsFeature -Name RSAT-AD-PowerShell
```

Run the following command to create a Key Distribution Service (KDS) root key, which is required for generating passwords for gMSAs. You only need to do this once per domain:

```
Add-KdsRootKey -EffectiveImmediately
```

Wait for at least 10 hours for the KDS root key to replicate to all domain controllers in the domain. Alternatively, you can use the `-EffectiveTime` parameter to specify a past date and time for the KDS root key, but this is not recommended for security reasons. For more information, see `Add-KdsRootKey`.

After the KDS root key is replicated, you can create and configure gMSAs using the `New-ADServiceAccount` and `Set-ADServiceAccount` cmdlets. For more information, see `Create a gMSA and Configure a gMSA`.

QUESTION 91

SIMULATION LAB 10

You need to configure Hyper-V to ensure that running virtual machines can be moved between SRV1 and SRV2 without downtime.

You do NOT need to move any virtual machines at this time.

A. See the solution of this Task below

Correct Answer: A

Section:

Explanation:

One possible solution to configure Hyper-V to ensure that running virtual machines can be moved between SRV1 and SRV2 without downtime is to use Live Migration. Live Migration is a feature of Hyper-V that allows you to move a running virtual machine from one host to another without any noticeable interruption of service. To set up Live Migration between SRV1 and SRV2, you need to perform the following steps:

On both SRV1 and SRV2, open Hyper-V Manager from the Administrative Tools menu or by typing `virtmgmt.msc` in the Run box.

In the left pane, right-click on the name of the server and select `Hyper-V Settings`.

In the Hyper-V Settings dialog box, select `Live Migrations` in the navigation pane.

Check the `Enable incoming and outgoing live migrations`.

Under `Authentication` protocol, select the method that you want to use to authenticate the live migration traffic between the servers. You can choose either `Kerberos` or `CredSSP`. Kerberos does not require you to sign in to the source server before starting a live migration, but it requires you to configure constrained delegation on the domain controller. CredSSP does not require you to configure constrained delegation, but it requires you to sign in to the source server through a local console session, a Remote Desktop session, or a remote Windows PowerShell session. For more information on how to configure constrained delegation, see `Configure constrained delegation`.

Under `Performance` options, select the option that best suits your network configuration and performance requirements. You can choose either `TCP/IP` or `Compression` or `SMB`. TCP/IP uses a single TCP connection for the live migration traffic. Compression uses multiple TCP connections and compresses the live migration traffic to reduce the migration time and network bandwidth usage. SMB uses the Server Message Block (SMB) 3.0 protocol and can leverage SMB features such as SMB Multichannel and SMB Direct. For more information on how to choose the best performance option, see `Choose a live migration performance option`.

Under `Advanced Features`, you can optionally enable the `Use any available network for live migration` option, which allows Hyper-V to use any available network adapter on the source and destination servers for live migration. If you do not enable this option, you need to specify one or more network adapters to be used for live migration by clicking on the `Add` button and selecting the network adapter from the list. You can also change the order of preference by using the `Move Up` and `Move Down` buttons.

Click `OK` to apply the settings.

Now, you have configured Hyper-V to enable live migration between SRV1 and SRV2. You can use Hyper-V Manager or Windows PowerShell to initiate a live migration of a running virtual machine from one server to another.

QUESTION 92

SIMULATION LAB 11



You need to ensure that all DHCP clients that get an IP address from SRV1 will be configured to use DC1 as a DNS server.

A. See the solution of this Task below

Correct Answer: A

Section:

Explanation:

One possible solution to ensure that all DHCP clients that get an IP address from SRV1 will be configured to use DC1 as a DNS server is to use the DHCP scope options. DHCP scope options are settings that apply to all DHCP clients that obtain an IP address from a specific scope. You can use the DHCP scope options to specify the DNS server IP address, as well as other parameters such as the default gateway, the domain name, and the DNS suffix. Here are the steps to configure the DHCP scope options on SRV1:

On SRV1, open DNS Manager from the Administrative Tools menu or by typing `dnsmgmt.msc` in the Run box.

In the left pane, expand your DHCP server and click on IPv4.

In the right pane, right-click on the scope that you want to configure and select Properties.

In the Scope Properties dialog box, click on the DNS tab.

Check the box **Enable DNS dynamic updates** according to the settings below. This option allows the DHCP server to register and update the DNS records for the DHCP clients.

Select the option **Always dynamically update DNS records**. This option ensures that the DHCP server updates both the A and PTR records for the DHCP clients, regardless of whether they request or support dynamic updates.

Check the box **Discard A and PTR records when lease is deleted**. This option allows the DHCP server to delete the DNS records for the DHCP clients when their leases expire or are released.

Check the box **Dynamically update DNS records for DHCP clients that do not request updates**. This option allows the DHCP server to update the DNS records for the DHCP clients that do not support dynamic updates, such as legacy or non-Windows clients.

In the DNS servers section, click on the Add button to add a new DNS server IP address.

In the Add Server dialog box, enter the IP address of DC1, which is the DNS server that you want to use for the DHCP clients, and click Add.

Click OK to close the Add Server dialog box and return to the Scope Properties dialog box.

Click OK to apply the changes and close the Scope Properties dialog box.

Now, all DHCP clients that get an IP address from SRV1 will be configured to use DC1 as a DNS server. You can verify the DNS configuration by using the `ipconfig /all` command on a DHCP client computer and checking the DNS Servers entry. You can also check the DNS records for the DHCP clients by using the DNS Manager console on DC1.

QUESTION 93

SIMULATION LAB 12

You need to create a Group Policy Object (GPO) named GPO1 that only applies to a group named MemberServers.

A. See the solution of this Task below

Correct Answer: A

Section:

Explanation:

To create a GPO named GPO1 that only applies to a group named MemberServers, you can follow these steps:

On a domain controller or a computer that has the Remote Server Administration Tools (RSAT) installed, open Group Policy Management from the Administrative Tools menu or by typing `gpmc.msc` in the Run box.

In the left pane, expand your domain and right-click on Group Policy Objects. Select **New** to create a new GPO.

In the New GPO dialog box, enter `GPO1` as the Name of the new GPO and click OK. You can also optionally select a source GPO to copy the settings from.

Right-click on the new GPO and select **Edit** to open the Group Policy Management Editor. Here, you can configure the settings that you want to apply to the group under the Computer Configuration and User Configuration nodes.

For more information on how to edit a GPO, see [Edit a Group Policy Object](#).

Close the Group Policy Management Editor and return to the Group Policy Management console. Right-click on the new GPO and select **Scope**. Here, you can specify the scope of management for the GPO, such as the links, security filtering, and WMI filtering.

Under the Security Filtering section, click on **Authenticated Users** and then click on **Remove**. This will remove the default permission granted to all authenticated users and computers to apply the GPO.

Click on **Add** and then type the name of the group that you want to apply the GPO to, such as `MemberServers`. Click OK to add the group to the security filter. You can also click on **Advanced** to browse the list of groups available in the domain.

Optionally, you can also configure the WMI Filtering section to further filter the GPO based on the Windows Management Instrumentation (WMI) queries. For more information on how to use WMI filtering, see [Filter the scope of a GPO by using WMI filters](#).

To link the GPO to an organizational unit (OU) or a domain, right-click on the OU or the domain in the left pane and select **Link an Existing GPO**. Select the GPO that you created, such as `GPO1`, and click OK. You can also change the order of preference by using the **Move Up** and **Move Down** buttons.

Wait for the changes to replicate to other domain controllers. You can also force the update of the GPO by using the `thegpupdate /forcecommand` on the domain controller or the client computers. For more information on how to update a GPO, see [Update a Group Policy Object](#).

Now, you have created a GPO named GPO1 that only applies to a group named MemberServers. You can verify the GPO application by using the `thegpresult /rcommand` on a member server and checking the `Applied Group Policy Objectsentry`. You can also use the `Group Policy Results wizard` in the `Group Policy Management console` to generate a report of the GPO application for a specific computer or user. For more information on how to use the `Group Policy Results wizard`, see [Use the Group Policy Results Wizard](#).

QUESTION 94

You have an Active Directory Domain Services (AD DS) domain that contains the domain controllers shown in the following table.

Name	Operations master role
DC1	Schema master
DC2	Infrastructure master
DC3	Domain naming master
DC4	PDC emulator, RID master

The domain contains an app named App1 that uses a custom application partition to store configuration data.

You decommission App1.

When you attempt to remove the custom application partition, the process fails.

Which domain controller is unavailable?

- A. DC1
- B. DC2
- C. DC3
- D. DC4



Correct Answer: C

Section:

QUESTION 95

HOTSPOT

You have an Azure subscription and a computer named Computed that runs Windows 11.

From the Azure portal, you deploy a virtual machine named VM1 that runs Windows Server. You configure VM1 to use the default settings.

You need to ensure that you can connect to VM1 by using PowerShell remoting.

Which cmdlet should you run, and what should you use to run the cmdlet? To answer, select the appropriate options in the answer area.

NOTE: Each correct selection is worth one point.

Hot Area:

Answer Area

Run from:
A PowerShell session on Computer1
A PowerShell session on VM1
Azure Cloud Shell

Cmdlet:
Enable-AzVMPSRemoting
Enable-PSRemoting -Force
Enable-PSSessionConfiguration

Answer Area:

Answer Area

Run from:
A PowerShell session on Computer1
A PowerShell session on VM1
Azure Cloud Shell

Cmdlet:
Enable-AzVMPSRemoting
Enable-PSRemoting -Force
Enable-PSSessionConfiguration

Section:

Explanation:

QUESTION 96

You have an Azure subscription. The subscription contains a virtual machine named VM1 that runs Windows Server. You plan to manage VM1 by using a PowerShell runbook. You need to create the runbook. What should you create first?

- A. an Azure workbook
- B. a Microsoft Power Automate flow
- C. a Log Analytics workspace
- D. an Azure Automation account

Correct Answer: D

Section:

QUESTION 97

HOTSPOT

Your on-premises network contains an Active Directory Domain Services (AD DS) domain. You plan to sync the domain with a Microsoft Entra tenant by using Microsoft Entra Connect cloud sync. You need to meet the following requirements:

* Install the software required to sync the domain and Microsoft Entra ID.

* Enable password hash synchronization.

What should you install, and what should you use to enable password hash synchronization? To answer, select the appropriate options in the answer area.

Hot Area:


Answer Area

Install:
Active Directory Administrative Center
Microsoft Entra Connect
The AD FS Management console
The Microsoft Entra Connect provisioning agent

Use:
Active Directory Administrative Center
Microsoft Entra Connect
The AD FS Management console
The Azure portal

Answer Area:

Answer Area



Install:
Active Directory Administrative Center
Microsoft Entra Connect
The AD FS Management console
The Microsoft Entra Connect provisioning agent

Use:
Active Directory Administrative Center
Microsoft Entra Connect
The AD FS Management console
The Azure portal

Section:

Explanation:

QUESTION 98

HOTSPOT

Your network contains an Active Directory Domain Services (AD DS) domain named contoso.com. The domain contains the users shown in the following table.

Name	Located in
User1	Contoso\Users
User2	Contoso\OU1
User3	Contoso\OU1\OU2

The domain has the Group Policy Objects (GPOs) shown in the following table.

Name	Linked to	Enforcement
GPO1	Contoso.com	Enforce is enabled for the GPO link.
GPO2	OU1	<i>None</i>
GPO3	OU2	Block inheritance is enabled for OU2.

The GPOs are configured to map a drive named H as shown in the following table.

Name	Configuration
GPO1	Drive H maps to \\server1\share.
GPO2	Drive H maps to \\server2\share.
GPO3	Drive H maps to \\server3\share.

For each of the following statements, select Yes if the statement is true. Otherwise, select No.

NOTE: Each correct selection is worth one point.

Hot Area:

Answer Area



Statements	Yes	No
For User1, \\server2\share maps to drive H.	<input type="radio"/>	<input type="radio"/>
For User2 \\server1\share maps to drive H.	<input type="radio"/>	<input type="radio"/>
For User3, \\server3\share maps to drive H.	<input type="radio"/>	<input type="radio"/>

Answer Area:

Answer Area

Statements

For User1, \\server2\share maps to drive H.

Yes

No

For User2 \\server1\share maps to drive H.

For User3, \\server3\share maps to drive H.

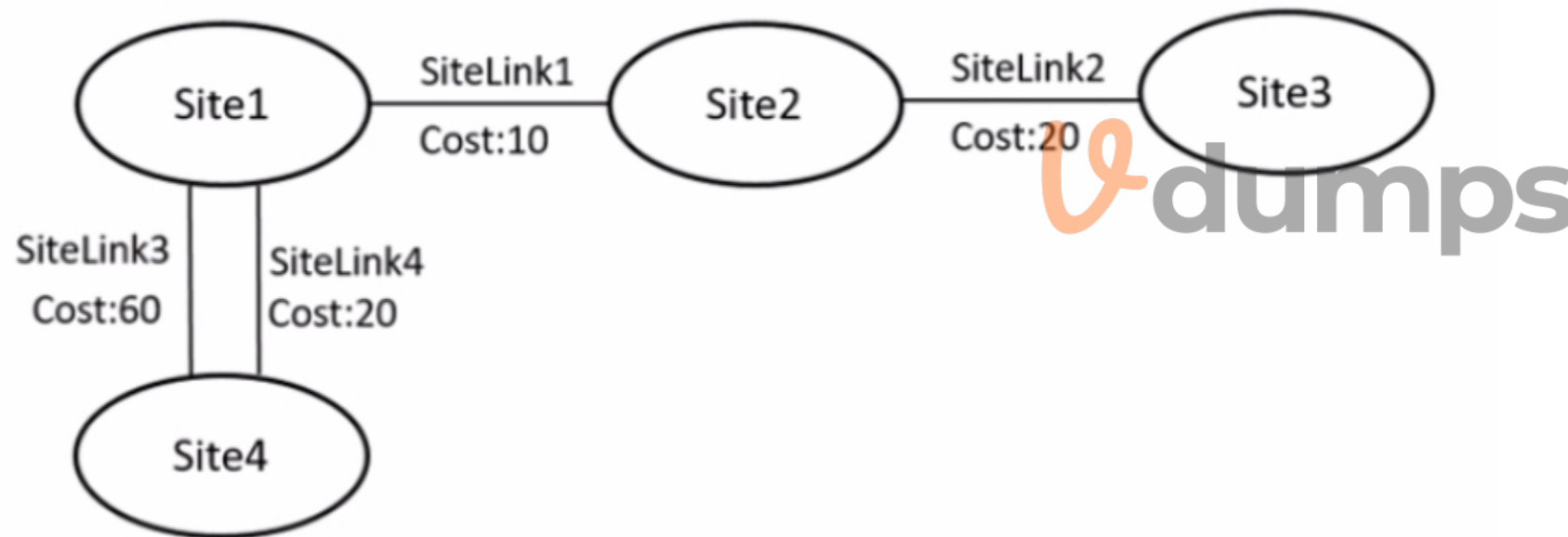
Section:

Explanation:

QUESTION 99

HOTSPOT

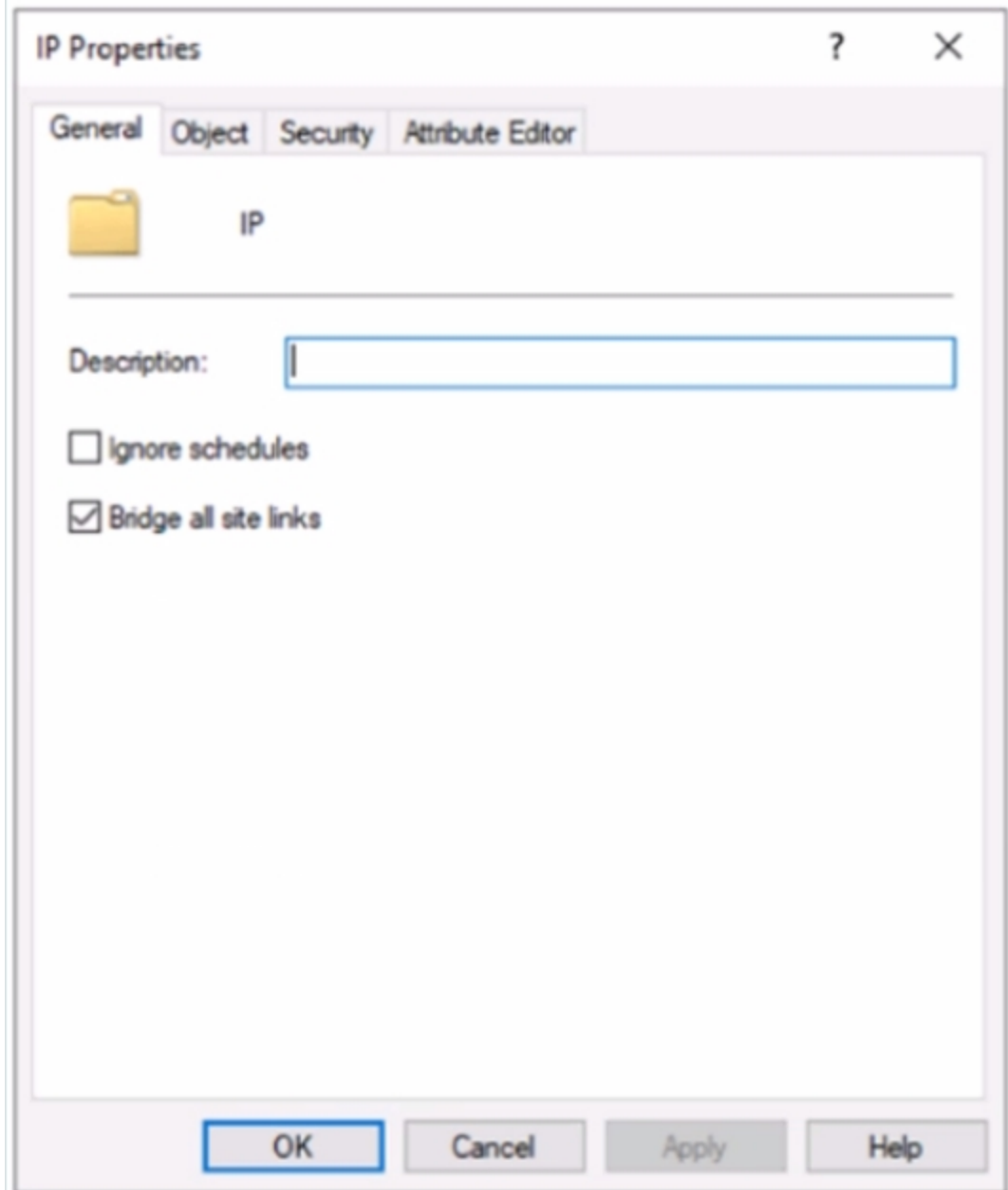
Your network contains an Active Directory Domain Services (AD DS) forest. The forest contains the sites and site links shown in the following exhibit.



The sites contain the bridgehead domain controllers shown in the following table.

Name	Site
DC1	Site1
DC2	Site2
DC3	Site3
DC4	Site4

The IP intersite transport container is configured as shown in the following exhibit.



Vdumps

For each of the following statements, select Yes if the statement is true. Otherwise, select No.
NOTE: Each correct selection is worth one point.

Hot Area:

Answer Area

Statements	Yes	No
DC1 can replicate directly to DC3.	<input type="radio"/>	<input type="radio"/>
DC1 will load balance replication traffic to DC4 via SiteLink3 and SiteLink4.	<input type="radio"/>	<input type="radio"/>
To ensure that replication between DC4 and DC2 is routed via DC1, the configuration of the IP intersite transport container must be modified.	<input type="radio"/>	<input type="radio"/>

Answer Area:
Answer Area

Statements

DC1 can replicate directly to DC3.

Yes

No

DC1 will load balance replication traffic to DC4 via SiteLink3 and SiteLink4.

To ensure that replication between DC4 and DC2 is routed via DC1, the configuration of the IP intersite transport container must be modified.

Section:
Explanation:

QUESTION 100

HOTSPOT

You have a Windows server named Server1.

You add two 4-TB hard drives named Disk1 and Disk2 to Server1.

You need to format the drives. The solution must meet the following requirements:

* Disk1 must support disk level quotas.

* Disk2 must support Data Deduplication.

Which type of file system should you use for each drive? To answer, select the appropriate options in the answer area.

NOTE; Each correct selection is worth one point.

Hot Area:

Answer Area

The screenshot shows two dropdown menus for selecting file systems. The first menu, labeled 'Disk1:', has 'NTFS only' selected. The second menu, labeled 'Disk2:', also has 'NTFS only' selected. Both menus list the following options: NTFS only, ReFS only, NTFS or exFAT only, NTFS or ReFS only, and NTFS, exFAT, or ReFS.

Answer Area:

Answer Area

Disk1: NTFS only
NTFS only
ReFS only
NTFS or exFAT only
NTFS or ReFS only
NTFS, exFAT, or ReFS

Disk2: NTFS only
NTFS only
ReFS only
NTFS or exFAT only
NTFS or ReFS only
NTFS, exFAT, or ReFS

Section:

Explanation:

