

Microsoft.MB-500.vJul-2024.by.Riena.133q

Number: MB-500
Passing Score: 800
Time Limit: 120
File Version: 21.0

Exam Code: MB-500
Exam Name: Microsoft Dynamics 365: Finance and Operations Apps Developer



01 - Developer Tools

Case study

This is a case study. Case studies are not timed separately. You can use as much exam time as you would like to complete each case. However, there may be additional case studies and sections on this exam. You must manage your time to ensure that you are able to complete all questions included on this exam in the time provided.

To answer the questions included in a case study, you will need to reference information that is provided in the case study. Case studies might contain exhibits and other resources that provide more information about the scenario that is described in the case study. Each question is independent of the other questions in this case study.

At the end of this case study, a review screen will appear. This screen allows you to review your answers and to make changes before you move to the next section of the exam. After you begin a new section, you cannot return to this section.

To start the case study To display the first question in this case study, click the Next button. Use the buttons in the left pane to explore the content of the case study before you answer the questions. Clicking these buttons displays information such as business requirements, existing environment, and problem statements. If the case study has an All Information tab, note that the information displayed is identical to the information displayed on the subsequent tabs. When you are ready to answer a question, click the Question button to return to the question.

Background

Wide World Importers sell office supplies, furniture, and fittings to their customers across the United States. The company has the following locations:

a retail store in Seattle a warehouse in Seattle a customer support and call center in Atlanta a team of field workers that provide furniture installation services at customer sites.

Wide World Importers plans to implement Dynamics 365 Finance and Microsoft Azure cloud platform features.

Current environment

Customers may place orders by email, phone, or by using the company's website. The company authorizes and processes credit card transactions by using a web-based application. Customer, inventory, supplier, and other master and transactional data is stored in a legacy database.

The company collects feedback from customers by phone or a form on the company's website and maintains the data in a Microsoft Excel workbook.

Wide World Importers runs on-premises applications to manage payroll and workers compensation. The company has a set of Microsoft Power BI dashboards that present data from a reporting database.

The company creates a Lifecycle Services (LCS) implementation project and completes Dynamics 365 Finance onboarding.

The company maintains production, quality assurance (QA), development, user acceptance testing (UAT), and build environments.

Requirements

General

You must configure a cloud-based Dynamics 365 Finance development environment and enable code extension that support updates.

You must configure version control and a Build environment.

You must migrate all legacy data to the new system.

You must implement best practices for X++ coding, the data model, caching, and security.

All new code must be unit tested in a development environment and then validated by the QA team before code is added to source control.

Business processes

You must configure vendor trade agreements.

Products must be shipped directly from suppliers to customers depending on customer location to save indirect costs.

You must collect customer feedback on products shipped directly from vendors.

You must deploy code to a UAT environment for testing before deploying code to production.

You must validate all entries for the purchase order creation form.

You must develop a web portal that allows customers to browse products, place orders, and check order status. Product data for the web portal must be integrated as periodic batches.

Business systems You must install and configure a third-party solution for credit card processing within Dynamics 365 Finance. The third-party company will provide a deployable package.

The workers compensation application must be able to call an API to update worker compensation details in Dynamics 365 Finance.

You must develop a process to import payroll journals into the system.

You must configure the warehouse mobile device portal for warehouse operations.

You must install a third-party solution to support web portal integration. The solution is supplied as a source code model file.

Vendor exclusion list

You must develop a new solution to maintain a Vendor exclusion list for each customer and item combination. The solution must meet the following requirements:

Isolate all new vendor exclusion codes as a new assembly by creating a table named VendExclusions.

Create an index for the table named PrimaryIdx that uses the following fields: CustAccount, ItemId, VendAccount.

Ensure that users can open the Vendor Exclusion list report from the customer master form. The list must display the customer account, Item ID, and Vendor account fields.

Implement the Excel integration for the Vendor Exclusion List form.

Provide functionality to periodically export the Vendor exclusion list to prepare reports by using standard reporting capabilities of Dynamics 365 Unified Operations.

Develop necessary security permissions to view and maintain the new Vendor exclusion list functionality and reporting. Users with maintain rights will be able create, update, and delete the exclusion list. Permissions must be assigned to security roles to match company security model.

Maintain referential integrity with other tables.

Users must be presented with a warning message before a direct delivery purchase order is created for a vendor in exclusion list.

Sales managers must be alerted when a new exclusion record is added to the system.

Security

You must implement the record level audit feature to identify the users who created the record.

Grant specific users rights to maintain the vendor exclusion list by using Excel.

You must implement validation to check whether a proposed direct delivery purchase order vendor is on the exclusion list for the customer and product combination.

Issues

User1 is not able to access many features in the system. You must provide User1 administrator rights.

A sales manager suspects a data-related issue in the vendor exclusion list. User1 must identify the user who created the referenced exclusion records.

Developer2 joins the company and does not have access to a development environment or source control.

User2 reports performance issues when they generate direct delivery purchase orders after current updates are applied.

User2 reports that they cannot access new functionality and reports.

QUESTION 1

DRAG DROP

You need to deploy the web portal integration solution.

Which four actions should you perform in sequence? To answer, move the appropriate actions from the list of actions to the answer area and arrange them in the correct order.

Select and Place:



Actions

Add the package to source control and check in changes.

Build and create a deployment package.

Import the model into a Development environment.

Synchronize the models in the Developer environment by using **Get latest** feature.

Import the model into the Build environment.

Import the model into a QA environment.

Import the deployment package in another development environment.

Answer Area



Correct Answer:

Actions

Import the model into the Build environment.
Import the model into a QA environment.
Import the deployment package in another development environment.

Answer Area

Add the package to source control and check in changes.

Import the model into a Development environment.

Synchronize the models in the Developer environment by using **Get latest** feature.

Build and create a deployment package.

Section:

Explanation:

Scenario: You must install and configure a third-party solution for credit card processing within Dynamics 365 Finance. The third-party company will provide a deployable package.

You must develop a web portal that allows customers to browse products, place orders, and check order status. Product data for the web portal must be integrated as periodic batches.

You must configure the warehouse mobile device portal for warehouse operations.

You must install a third-party solution to support web portal integration. The solution is supplied as a source code model file.

Step 1: Add the package to source control and check in the changes.

Deployable packages from third parties can be manually installed on a development VM, and the installed artifacts can then be added to source control.

Step 2: Import the model into a Development environment.

Install a model in a development environment

Step 3: Synchronize the models in the Developer environment by using Get latest feature Because the models and runtime packages are in source control, other developers who use other development environments can just synchronize the models and packages to their workspace by using the Get latest feature of source control.

Step 4: Build and create a deployment package The build process will include this runtime package in the final deployable package. This allows customers to take the deployable package from the build and have one package to deploy to their environments. The one package includes both custom solutions and all the third party solutions.

Reference:

<https://docs.microsoft.com/en-us/dynamics365/fin-ops-core/dev-itpro/dev-tools/manage-runtime-packages>

<https://docs.microsoft.com/en-us/dynamics365/fin-ops-core/dev-itpro/dev-tools/manage-runtime-packages#deploying-third-party-code>

02 - Developer Tools

QUESTION 1

You are a Dynamics 365 Finance developer.

You need to ensure that an integration is triggered when a specific process starts.
Which tool should you use to retrieve the status from the Production order?

- A. Batch job
- B. Periodic flow
- C. Business event
- D. Recurring Data Entity export

Correct Answer: C

Section:

Explanation:

Business events can be used as triggers from D365FO in Power Automate/MS Flow in an end to end way.

Reference: <https://community.dynamics.com/ax/b/happyd365fo/posts/triggers-using-business-event-in-power-automate-and-microsoft-dynamics-365-finance-and-operations>

QUESTION 2

HOTSPOT

You create the following cloud-based Dynamics 365 Finance environments:

Name	Comments
Development	Visual Studio workspace is configured and connected to an Azure DevOps branch.
Build	A Build pipeline is configured.
Standard Acceptance Test	This is a sandbox environment for testing customizations.

A developer creates code extensions in the Development environment. The developer checks the code changes into an Azure DevOps branch.

You need to deploy the code changes to the Standard Acceptance Test environment.

What should you do? To answer, select the appropriate options in the answer area.

NOTE: Each correct selection is worth one point.

Hot Area:

Answer Area

How should you prepare the package?

- | | |
|--|---|
| | ▼ |
| Export the Visual Studio project as an .axpp file. | |
| Build the code in a DevOps pipeline. | |
| Export the Visual Studio solution as a file. | |

In which section of the Lifecycle Services (LCS) should you store the package?

- | | |
|---------------------|---|
| | ▼ |
| Work items | |
| Solution management | |
| Asset library | |

How should you install the customization?

- | | |
|---|---|
| | ▼ |
| Select Maintain and then Apply updates. | |
| Select Maintain and then Upgrade. | |
| Select LCS project and then Business process modeler. | |
| Select LCS project and then Code upgrade. | |

Answer Area:



Answer Area

How should you prepare the package?

	▼
Export the Visual Studio project as an .axpp file.	
Build the code in a DevOps pipeline.	
Export the Visual Studio solution as a file.	

In which section of the Lifecycle Services (LCS) should you store the package?

	▼
Work items	
Solution management	
Asset library	

How should you install the customization?

	▼
Select Maintain and then Apply updates.	
Select Maintain and then Upgrade.	
Select LCS project and then Business process modeler.	
Select LCS project and then Code upgrade.	

Section:

Explanation:

Box 1: Build the code in the DevOps pipeline.

Box 2: Asset library

Run the export to the Asset library in Microsoft Dynamics Lifecycle Services (LCS).

Box 3: Select Maintain and Apply updates.

reprovision the target environment If you copy a database between environments, the copied database won't be fully functional until you run the Environment reprovisioning tool to make sure that all Commerce components are up to date.

Follow these steps to run the Environment reprovisioning tool.

1. In your project's Asset Library, in the Software deployable packages section, click Import.
2. From the list of shared assets, select the Environment Reprovisioning Tool.
3. On the Environment details page for your target environment, select Maintain > Apply updates.
4. Select the Environment Reprovisioning tool that you uploaded earlier, and then select Apply to apply the package.
5. Monitor the progress of the package deployment.

Reference:

<https://docs.microsoft.com/en-us/dynamics365/fin-ops-core/dev-itpro/database/dbmovement-scenario-exportuat#back-up-to-the-asset-library>

QUESTION 3

You are a Dynamics 365 Supply Chain Management developer.

You are working on a project by using Visual Studio.

Several users check out a custom form version control and modify the form.

You need to find the user that has added a specific line of code to the form.

What should you do?

- A. Open the object in Object Designer, select the title of the object, and then right-click View History.

- B. In Solution Explorer, navigate to the object and right-click View History.
- C. Using Visual Studio, navigate to the object. Add the object to a new solution, and then right-click View History.
- D. Using Visual Studio, navigate to the object in Application Explorer and right-click View History.

Correct Answer: D

Section:

Explanation:

In Visual Studio, Go to source control explorer > Select the object > right click > View history

Reference: <https://dynamicsuser.net/ax/f/developers/93354/how-to-rollback-a-change-set-completely-automatically-in-tfs>

QUESTION 4

You are a Dynamics 365 Finance developer. You are testing a workflow in a user acceptance testing environment.

You need to ensure that a specific user can accept purchase requisitions only if the requisition is in a specific status.

Which two options can you configure to achieve the goal? Each correct answer presents a complete solution.

NOTE: Each correct selection is worth one point.

- A. manual decision
- B. approval process
- C. conditional decision
- D. automated task
- E. manual task

Correct Answer: B, C

Section:

Explanation:

B: The approval step that you're configuring might be required only if specific conditions are met.

C: A conditional decision is a point at which a workflow divides into two branches. The system determines which branch is used by evaluating the submitted document to determine whether it meets specific conditions.

Reference: <https://docs.microsoft.com/en-sg/dynamics365/fin-ops-core/fin-ops/organization-administration/configure-conditional-decision-workflow>

QUESTION 5

You are a Dynamics 365 Finance developer. You make changes to an existing custom class.

The code comparison tool shows version conflicts between your version and the latest checked-in version of the custom class.

In Visual Studio, you open the Source Control Explorer. You locate the latest changeset for the class and you open the changeset in Team Explorer.

You need to compare the latest code that is in source control with the code that you created.

Which option should you use?

- A. Compare with Workspace Version
- B. Compare with Previous Version
- C. View History
- D. Compare with Latest Version

Correct Answer: D

Section:

Explanation:

Reference:

<https://docs.microsoft.com/en-us/azure/devops/repos/tfvc/compare-files?view=azure-devops>

QUESTION 6



DRAG DROP

A company implements Dynamics 365 finance and operations apps.

You are developing code to consume OData service endpoints. You complete the application registration process and gather the details required to create a C# console application.

You need to ensure that the console application interacts with Dynamics 365 Finance OData services.

Which three actions should you perform in sequence? To answer, move the appropriate actions from the list of actions to the answer area and arrange them in the correct order.

Select and Place:

Actions

Add the custom OData service endpoints in the ODataClient list.

Add the OData v4 client code generator.

Point the MetadataDocumentUri variable to the Dynamics 365 Finance instance.

Generate proxy classes.

Answer Area



Correct Answer:

Actions

Answer Area

Add the OData v4 client code generator.

Add the custom OData service endpoints in the ODataClient list.

Generate proxy classes.

Point the MetadataDocumentUri variable to the Dynamics 365 Finance instance.



Section:

Explanation:

Step 1: Add the OData v4 client code generator

Install OData Client Code Generator

Step 2: Add the custom OData service endpoints to the ODataClient list After you downloaded, installed the OData V4 Client Code Generator and restart the Visual Studio you will be able to find and add 'OData Client' item into our project.

Step 3: Generate proxy classes

Step 4: Point the MetaDataDocumentURI variable to the Dynamics 365 Finance instance
You need to set MetaDataDocumentURI, which is generated by the OData Code Generator.

Reference:

<https://devblogs.microsoft.com/odata/tutorial-sample-how-to-use-odata-client-code-generator-to-generate-client-side-proxy-class/>

<https://www.netwoven.com/2018/05/29/how-to-create-client-side-odata-proxy-dll-for-microsoft-dynamics-365-for-finance-and-operations-ax/>

01 - Design and Develop AOT Elements

Case study

This is a case study. Case studies are not timed separately. You can use as much exam time as you would like to complete each case. However, there may be additional case studies and sections on this exam. You must manage your time to ensure that you are able to complete all questions included on this exam in the time provided.

To answer the questions included in a case study, you will need to reference information that is provided in the case study. Case studies might contain exhibits and other resources that provide more information about the scenario that is described in the case study. Each question is independent of the other questions in this case study.

At the end of this case study, a review screen will appear. This screen allows you to review your answers and to make changes before you move to the next section of the exam. After you begin a new section, you cannot return to this section.

To start the case study To display the first question in this case study, click the Next button. Use the buttons in the left pane to explore the content of the case study before you answer the questions. Clicking these buttons displays information such as business requirements, existing environment, and problem statements. If the case study has an All Information tab, note that the information displayed is identical to the information displayed on the subsequent tabs. When you are ready to answer a question, click the Question button to return to the question.

Background

Wide World Importers sell office supplies, furniture, and fittings to their customers across the United States. The company has the following locations:

a retail store in Seattle a warehouse in Seattle a customer support and call center in Atlanta a team of field workers that provide furniture installation services at customer sites.

Wide World Importers plans to implement Dynamics 365 Finance and Microsoft Azure cloud platform features.

Current environment

Customers may place orders by email, phone, or by using the company's website. The company authorizes and processes credit card transactions by using a web-based application. Customer, inventory, supplier, and other master and transactional data is stored in a legacy database.

The company collects feedback from customers by phone or a form on the company's website and maintains the data in a Microsoft Excel workbook.

Wide World Importers runs on-premises applications to manage payroll and workers compensation. The company has a set of Microsoft Power BI dashboards that present data from a reporting database.

The company creates a Lifecycle Services (LCS) implementation project and completes Dynamics 365 Finance onboarding.

The company maintains production, quality assurance (QA), development, user acceptance testing (UAT), and build environments.

Requirements

General

You must configure a cloud-based Dynamics 365 Finance development environment and enable code extension that support updates.

You must configure version control and a Build environment.

You must migrate all legacy data to the new system.

You must implement best practices for X++ coding, the data model, caching, and security.

All new code must be unit tested in a development environment and then validated by the QA team before code is added to source control.

Business processes

You must configure vendor trade agreements.

Products must be shipped directly from suppliers to customers depending on customer location to save indirect costs.

You must collect customer feedback on products shipped directly from vendors.

You must deploy code to a UAT environment for testing before deploying code to production.

You must validate all entries for the purchase order creation form.

You must develop a web portal that allows customers to browse products, place orders, and check order status. Product data for the web portal must be integrated as periodic batches.

Business systems You must install and configure a third-party solution for credit card processing within Dynamics 365 Finance. The third-party company will provide a deployable package.

The workers compensation application must be able to call an API to update worker compensation details in Dynamics 365 Finance.

You must develop a process to import payroll journals into the system.

You must configure the warehouse mobile device portal for warehouse operations.

You must install a third-party solution to support web portal integration. The solution is supplied as a source code model file.

Vendor exclusion list

You must develop a new solution to maintain a Vendor exclusion list for each customer and item combination. The solution must meet the following requirements:

Isolate all new vendor exclusion codes as a new assembly by creating a table named VendExclusions.

Create an index for the table named PrimaryIdx that uses the following fields: CustAccount, ItemId, VendAccount.

Ensure that users can open the Vendor Exclusion list report from the customer master form. The list must display the customer account, Item ID, and Vendor account fields.

Implement the Excel integration for the Vendor Exclusion List form.

Provide functionality to periodically export the Vendor exclusion list to prepare reports by using standard reporting capabilities of Dynamics 365 Unified Operations.

Develop necessary security permissions to view and maintain the new Vendor exclusion list functionality and reporting. Users with maintain rights will be able create, update, and delete the exclusion list. Permissions must be assigned to security roles to match company security model.

Maintain referential integrity with other tables.

Users must be presented with a warning message before a direct delivery purchase order is created for a vendor in exclusion list.

Sales managers must be alerted when a new exclusion record is added to the system.

Security

You must implement the record level audit feature to identify the users who created the record.

Grant specific users rights to maintain the vendor exclusion list by using Excel.

You must implement validation to check whether a proposed direct delivery purchase order vendor is on the exclusion list for the customer and product combination.

Issues

User1 is not able to access many features in the system. You must provide User1 administrator rights.

A sales manager suspects a data-related issue in the vendor exclusion list. User1 must identify the user who created the referenced exclusion records.

Developer2 joins the company and does not have access to a development environment or source control.

User2 reports performance issues when they generate direct delivery purchase orders after current updates are applied.

User2 reports that they cannot access new functionality and reports.

QUESTION 1

HOTSPOT

The system includes the following code: (Line numbers are included for reference only.)

```
01 public boolean checkVendor(CustAccount _custAccount, ItemId itemId,
    VendAccount _vendAccount)
02 {
03     boolean ret true;
04     CustAccount custAccount;
05     ItemId itemId;
06     VendExclusion vendExclusion;
07     select vendExclusion
08
09     where vendExclusion.CustAccount == _custAccount
        && vendExclusion.ItemId == _itemId
        && vendExclusion.VendAccount == _vendAccount;
10     if (vendExclusion.RecId)
11     {
12         ret = false
13     }
14     return ret;
15 }
```

You need to apply changes to address User2's issues.

For each of the following statements, select Yes if the statement is true. Otherwise, select No.

NOTE: Each correct selection is worth one point.

Hot Area:

Statement	Yes	No
Add the firstly keyword to the query and choose a field list in the select statement.	<input type="radio"/>	<input type="radio"/>
Review and configure clustered index table properties.	<input type="radio"/>	<input type="radio"/>
Review and configure primary index table properties.	<input type="radio"/>	<input type="radio"/>
Add a column list that includes the RecId field to the query.	<input type="radio"/>	<input type="radio"/>

Answer Area:

Statement	Yes	No
Add the firstly keyword to the query and choose a field list in the select statement.	<input type="radio"/>	<input checked="" type="radio"/>
Review and configure clustered index table properties.	<input type="radio"/>	<input checked="" type="radio"/>
Review and configure primary index table properties.	<input checked="" type="radio"/>	<input type="radio"/>
Add a column list that includes the RecId field to the query.	<input checked="" type="radio"/>	<input type="radio"/>

Section:

Explanation:

Scenario: User2 reports performance issues when they generate direct delivery purchase orders after current updates are applied.

Also: You must implement validation to check whether a proposed direct delivery purchase order vendor is on the exclusion list for the customer and product combination.

Box 1: No

The firstOnly keyword helps speed up the fetch by returning only the first row.

Box 2: No

Box 3: Yes

Box 4: Yes RecId stands for Record Identifier. It is often called RowId (row identifier). It is a unique and incremental value stored with each and every row of the table. In Microsoft Dynamics AX 2012 and Microsoft Dynamics 365 for Finance and

Operations, RecId is used as unique identifiers and to create relations between tables.

Another important point is the difference between ReclId and Id. In simple words, ReclId is generated by the kernel whereas the Id is generated by the application itself. ReclId is used to find out the unique row in the table.

Reference:

<https://docs.microsoft.com/en-us/dynamics365/fin-ops-core/dev-itpro/dev-ref/xpp-data-query>

<https://community.dynamics.com/ax/b/nevoitechax/posts/what-is-recid-in-microsoft-dynamics-ax-365fo>

QUESTION 2

HOTSPOT

You need to implement the integration for the Vendor Exclusion List form.

What should you do? To answer, select the appropriate options in the answer area.

NOTE: Each correct selection is worth one point.

Hot Area:

Answer Area

Element	Option
Element to add to project	<input type="text"/> Table extension Data Entity View Query
Key type to create	<input type="text"/> Unique key Foreign key
Action to perform	<input type="text"/> Build the project. Build and synchronize the database. Build the solution.

Answer Area:

Answer Area

Element	Option
Element to add to project	<input type="text"/> ▼ Table extension Data Entity View Query
Key type to create	<input type="text"/> ▼ Unique key Foreign key
Action to perform	<input type="text"/> ▼ Build the project. Build and synchronize the database. Build the solution.

Section:

Explanation:

Box 1: Table extension

Isolate all new vendor exclusion codes as a new assembly by creating a table named VendExclusions.

Implement the Excel integration for the Vendor Exclusion List form.

The table extension object allows you to add additional fields or to change some properties on a table provided by the Dynamics 365 Business Central service. In this way, you can add data to the same table and treat it as a single table.

Box 2: Unique key

Create an index for the table named PrimaryIdx that uses the following fields: CustAccount, ItemId, VendAccount.

Box 3: Build and synchronize the database.

A project property lets you specify that the synchronize operation for the database should be performed every time that you build the project. This can be useful when you're making changes to the table structure for an application. Each time that you build, you will know that the database is synchronized with the tables as they are defined in the project.

Reference:

<https://docs.microsoft.com/en-us/dynamics365/business-central/dev-itpro/developer/devenv-table-ext-object>

<https://docs.microsoft.com/en-us/dynamics365/fin-ops-core/dev-itpro/dev-tools/build-operations#synchronizing-the-database-at-each-build>

02 - Design and Develop AOT Elements

Case study

This is a case study. Case studies are not timed separately. You can use as much exam time as you would like to complete each case. However, there may be additional case studies and sections on this exam. You must manage your time to ensure that you are able to complete all questions included on this exam in the time provided.

To answer the questions included in a case study, you will need to reference information that is provided in the case study. Case studies might contain exhibits and other resources that provide more information about the scenario that is described in the case study. Each question is independent of the other questions in this case study.

At the end of this case study, a review screen will appear. This screen allows you to review your answers and to make changes before you move to the next section of the exam. After you begin a new section, you cannot return to this section.

To start the case study To display the first question in this case study, click the Next button. Use the buttons in the left pane to explore the content of the case study before you answer the questions. Clicking these buttons displays information such as business requirements, existing environment, and problem statements. If the case study has an All Information tab, note that the information displayed is identical to the information displayed on the subsequent tabs. When you are ready to answer a question, click the Question button to return to the question.

Background

Overview

First Up Consultants provides Commercial Cleaning services to its clients. The company purchases all its cleaning supplies from Best For You Organics Company.

First Up Consultants is using a cloud-based Dynamics 365 Finance instance. The system has a foundation table named CashDisc that contains one cash discount record for each cash discount type.

Best For You Organics Company invoices First Up Consultants and allows cash discounts based on how fast an invoice is paid. First Up Consultants is entitled to a two percent discount from Best for You Organics for any invoice that is paid within 10 days and has a minimum invoice amount of \$2,500.

Business requirements

All new and extended objects must be located in an existing model named FinanceExt. The creation of new models is not permitted.

Best For You Organics Company requires that First Up Consultants apply specific minimum invoice amounts to each cash discount record. A cash discount may only be applied when the minimum invoice amount requirement has been met.

The new field must be added to the CashDisc form grid with the allowable visible number of characters set to 10.

First Up Consultants must retrieve the required Cash Discount methods and corresponding minimum invoice amounts directly from Best For You Organics Company's enterprise resource planning (ERP) system.

The Chief Financial Officer (CFO) requires the following reports:

A report that shows all outstanding invoices, their cash discount types including the new minimum threshold applicable, and the amount of the discount. The report must only be accessed by users who are members of the Accounts

Payable Manager role.

You must create a Microsoft Excel workbook that lists unpaid invoices to Best For You Organics Company that have a due date earlier than 5/1/2019 and an Invoice Amount between \$20,000 and \$100,000.

Cash discounts for unpaid invoices must be updated with the new minimum invoice amounts.

Technical requirements

Vendor Invoices Past Due form

You must be able to filter the grid on the Vendor Invoices Past Due form. By default, you must filter the form based on the Due Date, Invoice Amount, and Vendor columns. Users must be able to apply reusable user-specific filters to a page using multiple fields.

CashDisc form

You must extend the CashDisc form to add a new field named MinimumInvoiceAmount to the form. You must add a new Extended Data Type to the extension model for the new field. The new field must be added above the discount method field. The field must display 10 characters.

The accounts payable manager and the accounts payable clerk have Delete access to the form. You must alter permissions to limit accounts payable clerks to have only View access to the form.

Cash Discount Records report You must create a report that shows a list of CashDisc records. You must include the MinimumInvoiceAmount field and filtered data by using the CashDisc.DiscMethod field. Applicable security objects must be created in the existing "FinanceExt" model and configured so the report is accessible by those users to the accounts payable role.

Batch jobs

You must create a batch job that runs on the last day of each month to update the current unpaid invoices with changes in the minimum invoice amount. The job must meet the following requirements:

Accept the following parameters: Vendor, DueDate.

Be callable by an Action menu item.

Allow users to specify vendors to include in the job.

Use SysOperation Framework for all batch jobs.

You must create a batch job to identify modified CashDisc.MinimumInvoiceAmount values and apply these to open Purchase Lines.

QUESTION 1

You need to update the CashDisc report to meet the requirements.

What should you do?

- A. Delete the existing CashDisc report in the extension model and create a new report.
- B. Extend the existing CashDisc report in the extension model and add the new field to the design.
- C. Duplicate the existing CashDisc report in the extension model and add the new field to the design.
- D. Customize the existing CashDisc report in the overlayering model and add the new field to the design.

Correct Answer: B

Section:

QUESTION 2

You need to modify the environment to meet the requirements for the Cash Discount Records report.

What should you do?

- A. Create an extension of CashDisc in a new project and add the field to the extended table.
- B. Create a new table named CashDiscExtension in the project.
- C. Use Open Designer to add the field to the table.
- D. Create an overlay of CashDisc in a new project and add the field.

Correct Answer: A

Section:

QUESTION 3

HOTSPOT

You need to modify the CashDisc form to meet the requirements.

Which objects should you use? To answer, select the appropriate options in the answer area.

NOTE: Each correct selection is worth one point.

Hot Area:

Answer Area

Action

Create the following object on the CashDisc table:

▼
duplicate
extension
inheritance
overlaying

Add a

▼
relation
field
display method
field group

to the table and then add the object to an existing

▼
index
field group
map
relation

Restore the

▼
design
data source
form parts
form methods

of the CashDisc form.

Answer Area:

Answer Area

Action

Create the following object on the CashDisc table:

	▼
duplicate	
extension	
inheritance	
overlayering	

Add a

	▼
relation	
field	
display method	
field group	

to the table and then add the object to an existing

	▼
index	
field group	
map	
relation	

Restore the

	▼
design	
data source	
form parts	
form methods	

of the CashDisc form.



Section:

Explanation:

Scenario: CashDisc form

You must extend the CashDisc form to add a new field named MinimumInvoiceAmount to the form. You must add a new Extended Data Type to the extension model for the new field. The new field must be added above the discount method field. The field must display 10 characters.

Box 1: extension

To add a new field to an existing table, you must first create a table extension.

Box 2: field

Box 3: field group

Box 4: data source Often, the information that is stored in existing tables doesn't satisfy customer requirements. Therefore, additional tables must be created, and data from those tables must be shown on pages.

You can add new data sources to existing forms through extension. Follow these steps.

1. In the extension model, create a form extension for the selected form.

2. Right-click the form extension, and then select New Data Source.

Reference:

<https://docs.microsoft.com/en-us/dynamics365/fin-ops-core/dev-itpro/extensibility/add-datasource>

03 - Design and Develop AOT Elements

QUESTION 1

You are working with extended data types in Visual Studio.

You need to create an extension of an Extended Data Types (EDT) that is derived from base data types.

Which three properties can be modified? Each correct answer presents a complete solution.

NOTE: Each correct selection is worth one point.

- A. String size
- B. IsExtensible
- C. Form help
- D. Alignment
- E. Label

Correct Answer: A, C, E

Section:

Explanation:

String size can be defined only on root EDTs. The system will use the largest value that is defined across the EDT and its extensions.

Labels and Help text properties can be changed by an extension, but only one value can remain.

Reference: <https://docs.microsoft.com/en-us/dynamics365/fin-ops-core/dev-itpro/extensibility/extensible-edts>

QUESTION 2

You add a field to the SalesTable entity by using an extension.

You need to ensure that the new field is available for use in forms, reports, and code.

What are three possible ways to achieve this goal? Each correct answer presents a complete solution.

NOTE: Each correct selection is worth one point.

- A. Right-click the table and select Synchronize.
- B. Navigate to the Dynamics 365 menu and select Synchronize database.
- C. Right-click the solution and select Synchronize with database.
- D. Set the project property for Synchronize database on build to true and build the solution.
- E. Right-click the project and select Synchronize with database.



Correct Answer: A, D, E

Section:

QUESTION 3

Note: This question-is part of a series of questions that present the same scenario. Each question-in the series contains a unique solution that might meet the stated goals. Some question-sets might have more than one correct solution, while others might not have a correct solution.

After you answer a question-in this section, you will NOT be able to return to it. As a result, these questions will not appear in the review screen.

You are adding a new field to the SalesTable form.

You must use an extension to add a status field onto the form.

You need to create the extension in the Application Object Tree (AOT) and add the extension to the demoExtensions model.

Solution: Navigate to the user interface forms section for the SalesTable form and create an extension.

Does the solution meet the goal?

- A. Yes
- B. No

Correct Answer: A

Section:

Explanation:

You can customize model elements by creating extensions.

In Dynamics 365 Finance and Operations, the new fields will need to be added via a table extension. Create the extensions on the SalesTable.

Reference:

<https://stoneridgesoftware.com/how-to-extend-sales-order-update-functionality-to-custom-fields-in-d365-finance-and-operations/>

QUESTION 4

Note: This question-is part of a series of questions that present the same scenario. Each question-in the series contains a unique solution that might meet the stated goals. Some question-sets might have more than one correct solution, while others might not have a correct solution.

After you answer a question-in this section, you will NOT be able to return to it. As a result, these questions will not appear in the review screen.

You are adding a new field to the SalesTable form.

You must use an extension to add a status field onto the form.

You need to create the extension in the Application Object Tree (AOT) and add the extension to the demoExtensions model.

Solution: Navigate to the user interface forms section for the SalesTable form and create a customization.

Does the solution meet the goal?

A. Yes

B. No

Correct Answer: B

Section:

Explanation:

Instead navigate to the user interface forms section for the SalesTable form and create an extension.

Note: In Dynamics 365 Finance and Operations, the new fields will need to be added via a table extension. Create the extensions on the SalesTable.

Reference:

<https://stoneridgesoftware.com/how-to-extend-sales-order-update-functionality-to-custom-fields-in-d365-finance-and-operations/>

QUESTION 5

Note: This question-is part of a series of questions that present the same scenario. Each question-in the series contains a unique solution. Determine whether the solution meets the stated goals. Some question-sets might have more than one correct solution, while others might not have a correct solution.

After you answer a question-in this section, you will NOT be able to return to it. As a result, these questions will not appear in the review screen.

You are developing a form for Dynamics 365 Finance.

You need to add a button that allows users to run a report.

Solution: Create a command button and link the button to the report by using the button's object property.

Does the solution meet the goal?

A. Yes

B. No

Correct Answer: B

Section:

Explanation:

You would need to use the on-click property of the command button.

Reference:

<https://support.microsoft.com/en-gb/office/use-a-command-button-to-start-an-action-or-a-series-of-actions-c7bf2827-2f3e-42b8-83d6-6c4f0de78990> <https://docs.microsoft.com/en-us/dynamics365/fin-ops-core/dev-itpro/user-interface/action-controls>

QUESTION 6

Note: This question is part of a series of questions that present the same scenario. Each question in the series contains a unique solution that might meet the stated goals. Some question sets might have more than one correct solution, while others might not have a correct solution.

After you answer a question in this section, you will NOT be able to return to it. As a result, these questions will not appear in the review screen.

You must extend the class SalesLineType and add a new method that returns the day of week for the system's current date as an integer value.

You need to create a class that extends SalesLineType and adds the new method.

Solution: You create the following code:

```
[ExtensionOf(classStr(SalesLineType))]  
final class mySalesLineType_myExtension  
{  
    public int extensionMethodDayofWeek()  
    {  
        return dayofwk(systemDateGet());  
    }  
}
```

Does the solution meet the goal?

- A. Yes
- B. No

Correct Answer: B

Section:

QUESTION 7

Note: This question is part of a series of questions that present the same scenario. Each question in the series contains a unique solution that might meet the stated goals. Some question sets might have more than one correct solution, while others might not have a correct solution.

After you answer a question in this section, you will NOT be able to return to it. As a result, these questions will not appear in the review screen.

You must extend the class SalesLineType and add a new method that returns the day of week for the system's current date as an integer value.

You need to create a class that extends SalesLineType and adds the new method.

Solution: You create the following code:

```
final class mySalesLineType_Extension extends SalesLineType  
{  
    public int ExtensionMethodDayofWeek()  
    {  
        return dayOfWk(systemDateGet());  
    }  
}
```

Does the solution meet the goal?

- A. Yes
- B. No

Correct Answer: B

Section:

QUESTION 8

Note: This question is part of a series of questions that present the same scenario. Each question in the series contains a unique solution that might meet the stated goals. Some question sets might have more than one correct solution, while others might not have a correct solution.

After you answer a question in this section, you will NOT be able to return to it. As a result, these questions will not appear in the review screen.

You must extend the class SalesLineType and add a new method that returns the day of week for the system's current date as an integer value.

You need to create a class that extends SalesLineType and adds the new method.

Solution: You create the following code:

```
[ExtensionOf(classStr(SalesLineType))]  
final class mySalesLineType_Extension  
{  
    public int extensionMethodDayOfWeek()  
    {  
        return dayofwk(systemDateGet());  
    }  
}
```

Does the solution meet the goal?

- A. Yes
- B. No

Correct Answer: B

Section:

QUESTION 9

You have a table in which multiple properties must be changed. Multiple table properties are locked down at the base table and must not be overwritten.

You need to modify the table properties by extending the table.

Which table property can you populate in a table extension by using the property sheet?

- A. Primary index
- B. Created by
- C. Configuration key
- D. Table group

Correct Answer: B

Section:

Explanation:

You can now modify the following properties through the property sheet:

Created By

Created Date Time

Modified By

Modified Date Time

Country Region Codes

Note: There are multiple versions of this question with different correct answers and various combinations of incorrect answers.

Other incorrect answers you may see in the exam include:

Save data per company

Clustered index

Cache lookup

Reference:

<https://docs.microsoft.com/en-us/dynamics365/fin-ops-core/dev-itpro/extensibility/modify-properties>

QUESTION 10

DRAG DROP

You are a Dynamics 365 Finance developer for a company that sells pre-owned vehicles. When the company acquires a new vehicle, vehicle identification (VIN) numbers are added to the VIN field in the CustTable.



You need to create an event handler to validate that new VIN values are at least 10 characters long. Validation must occur when records are saved. Which three actions should you perform in sequence? To answer, move the appropriate actions from the list of actions to the answer area and arrange them in the correct order.

Select and Place:

Answer Area

Actions

Copy the validatingWrite event handler on the CustTable table object.

Copy the validateWrite event handler on the CustTable object.

Add code to perform the validation.

Copy the onModified event handler on the CustTable object.

Add the event handler method to a class.



Correct Answer:

Answer Area

Actions

Copy the validatingWrite event handler on the CustTable table object.

Copy the onModified event handler on the CustTable object.

Add the event handler method to a class.

Copy the validateWrite event handler on the CustTable object.

Add code to perform the validation.

Section:

Explanation:

Step 1: Add the event handler method to a class.

Step 2: Copy the validateWrite event handler on the CustTable object.

validateWrite is published Table method. ValidatingWriting is the preceding event.

Step 3: Add code to perform the validation.

Incorrect Answers:

validatingWrite is not a published Table method.

Reference:

<https://docs.microsoft.com/en-us/dynamics365/fin-ops-core/dev-itpro/extensibility/customization-overlayering-extensions>

QUESTION 11

HOTSPOT

You are creating entities that will have unmapped fields.

You need determine which types of unmapped fields to use.

Which field types should you use? To answer, drag the appropriate field types to the correct requirements. Each field type may be used once, more than once, or not at all. You may need to drag the split bar between panes or scroll to view content.

NOTE: Each correct selection is worth one point.

Hot Area:

Answer Area

Requirement	Field type
Create a read-only field that fetches data directly from a view.	<input type="checkbox"/> Computed <input type="checkbox"/> Virtual
Create a field that is computed by SQL Server.	<input type="checkbox"/> Computed <input type="checkbox"/> Virtual
Create a field that is calculated row by row during read and write operations by using X++ code.	<input type="checkbox"/> Computed <input type="checkbox"/> Virtual
Create a non-persisted field.	<input type="checkbox"/> Computed <input type="checkbox"/> Virtual

Answer Area:

Answer Area

Requirement

Field type

Create a read-only field that fetches data directly from a view.

	▼
Computed	
Virtual	

Create a field that is computed by SQL Server.

	▼
Computed	
Virtual	

Create a field that is calculated row by row during read and write operations by using X++ code.

	▼
Computed	
Virtual	

Create a non-persisted field.

	▼
Computed	
Virtual	

Section:

Explanation:

Box 1: Computed

Computed field: Value is generated by an SQL view computed column.

During read, data is computed by SQL and is fetched directly from the view.

Box 2: Computed

Box 3: Virtual

Virtual field:

Is a non-persisted field.

Is controlled by custom X++ code.

Read and write happens through custom X++ code.

Virtual fields are typically used for intake values that are calculated by using X++ code and can't be replaced by computed columns.

Box 4: Virtual

Virtual field is a non-persisted field.

Reference:

<https://docs.microsoft.com/en-us/dynamics365/fin-ops-core/dev-itpro/data-entities/data-entity-computed-columns-virtual-fields>

QUESTION 12

DRAG DROP

A company has a Dynamics 365 Finance environment.

You need to implement indices for new tables.

Which types of indexes should you use? To answer, drag the appropriate types of indexes to the correct requirements. Each type of index may be used once, more than once, or not at all. You may need to drag the split bar between panes or scroll to view content.

NOTE: Each correct selection is worth one point.

Select and Place:



Index types	Requirement	Index type
Primary	Provide a unique key for each record in a table.	
Clustered	Organize the data for a table according to the physical order of the specified column.	
Non-Clustered	Quickly reference data that is found by using a specified set of columns.	

Correct Answer:

Index types	Requirement	Index type
	Provide a unique key for each record in a table.	Primary
	Organize the data for a table according to the physical order of the specified column.	Clustered
	Quickly reference data that is found by using a specified set of columns.	Non-Clustered

Section:

Explanation:

Box 1: Primary

Box 2: Clustered

A clustered index is a special type of index that reorders the way records in the table are physically stored.

Box 3: Non-clustered

Reference:

<https://docs.microsoft.com/en-us/sql/relational-databases/indexes/clustered-and-nonclustered-indexes-described>

QUESTION 13

You have a table in which multiple properties must be changed. Multiple table properties are locked down at the base table and must not be overwritten.

You need to modify the table properties by extending the table.

Which table property can you populate in a table extension by using the property sheet?

- A. Cache lookup
- B. Modified date time
- C. Configuration key
- D. Table group

Correct Answer: B

Section:**Explanation:**

You can now modify the following properties through the property sheet:

Created By

Created Date Time

Modified By

Modified Date Time

Country Region Codes

Note: There are multiple versions of this question with different correct answers and various combinations of incorrect answers.

Other incorrect answers you may see in the exam include:

Primary index

Save data per company

Clustered index

Reference:

<https://docs.microsoft.com/sv-se/dynamics365/fin-ops-core/dev-itpro/extensibility/modify-properties-properties>

QUESTION 14

You are creating a new form in Visual Studio.

You need to apply the Simple List pattern and apply the pattern to a form.

What are the two possible ways to achieve the goal? Each correct answer presents a complete solution.

NOTE: Each correct selection is worth one point.

- A. Use form statistics.
- B. Use the Application Object Tree (AOT).
- C. Use metadata properties.
- D. Use the designer.



Correct Answer: A, D

Section:**Explanation:**

A: In Microsoft Visual Studio, on the Dynamics 365 menu, expand the Add-ins option, and click Run form patterns report. A background process generates the report. After several seconds, a message box appears in Visual Studio to indicate that the report has been generated and inform you about the location of the Form Patterns report file. You can filter this file by pattern to find forms that use a particular pattern.

D: Right-click Design, point to Apply pattern, and then click Details Master.

Reference:

<http://axtechsolutions.blogspot.com/2018/09/form-patterns-in-d365.html>

QUESTION 15

Note: This question-is part of a series of questions that present the same scenario. Each question-in the series contains a unique solution that might meet the stated goals. Some question-sets might have more than one correct solution, while others might not have a correct solution.

After you answer a question-in this section, you will NOT be able to return to it. As a result, these questions will not appear in the review screen.

You are adding a new field to the SalesTable form.

You must use an extension to add a status field onto the form.

You need to create the extension in the Application Object Tree (AOT) and add the extension to the demoExtensions model.

Solution: Add a new form object to the project and name the form SalesTable.Extension.

Does the solution meet the goal?

- A. Yes
- B. No

Correct Answer: B

Section:

Explanation:

Instead navigate to the user interface forms section for the SalesTable form and create an extension.

Note: In Dynamics 365 Finance and Operations, the new fields will need to be added via a table extension. Create the extensions on the SalesTable.

Reference: <https://stoneridgesoftware.com/how-to-extend-sales-order-update-functionality-to-custom-fields-in-d365-finance-and-operations/>

QUESTION 16

A company has an extension that makes changes to a base form.

You need to identify all extension changes made to the base form.

What are two possible ways to achieve the goal? Each correct answer presents a complete solution.

NOTE: Each correct selection is worth one point.

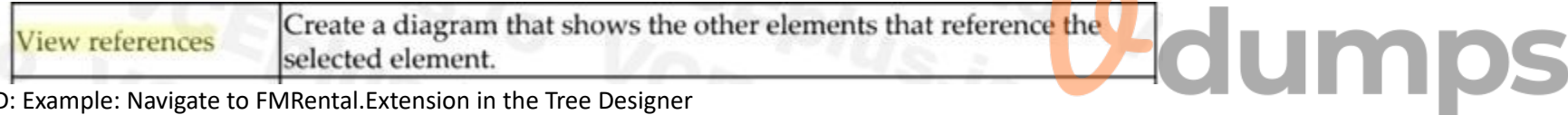
- A. In the search bar on the form extension element, enter the text c:.
- B. In the search bar on the base form, enter the text e:.
- C. Right-click the base form and select view references.
- D. In the search bar on the form extension element, enter the text e:.
- E. In the search bar on the base form, enter the text c:.

Correct Answer: C, D

Section:

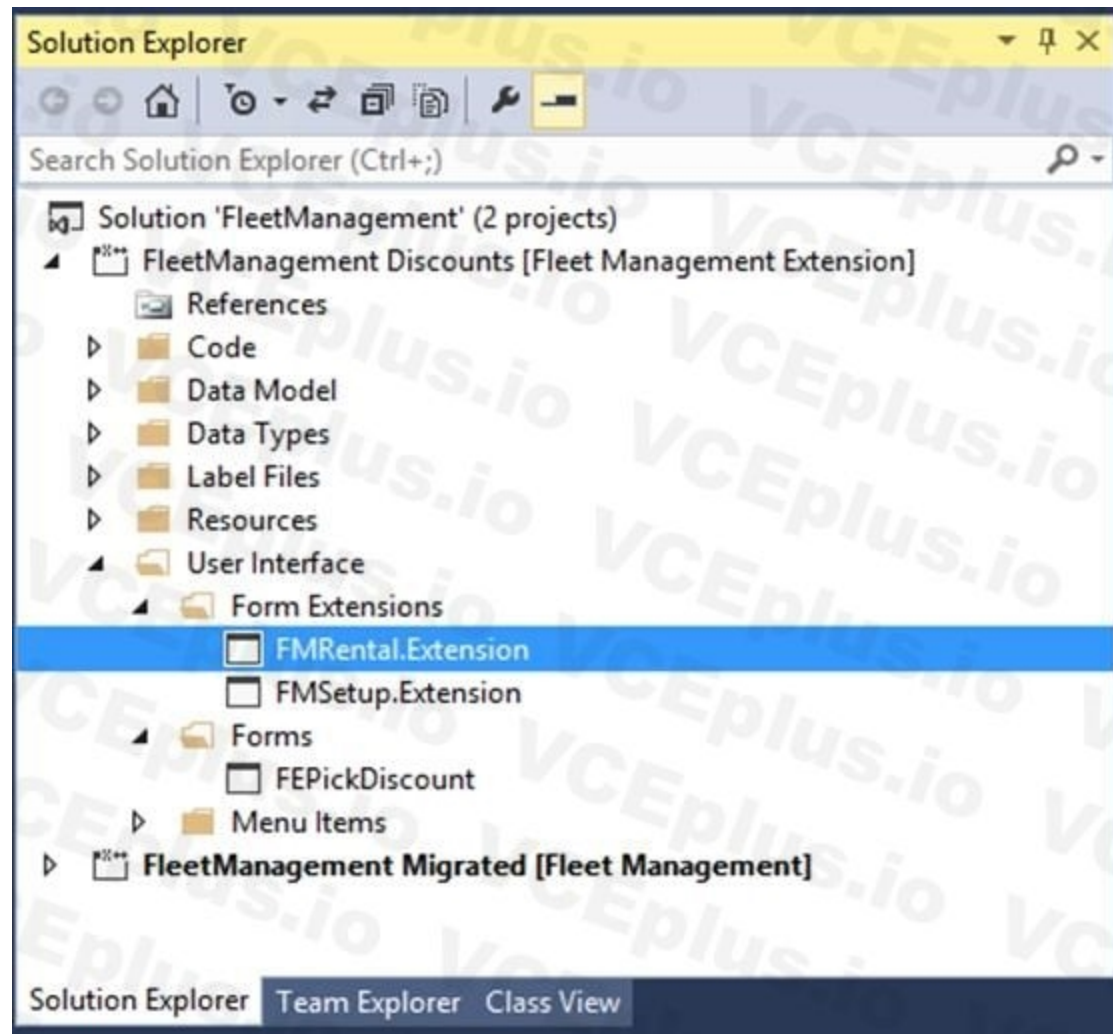
Explanation:

C: Customization and Extension

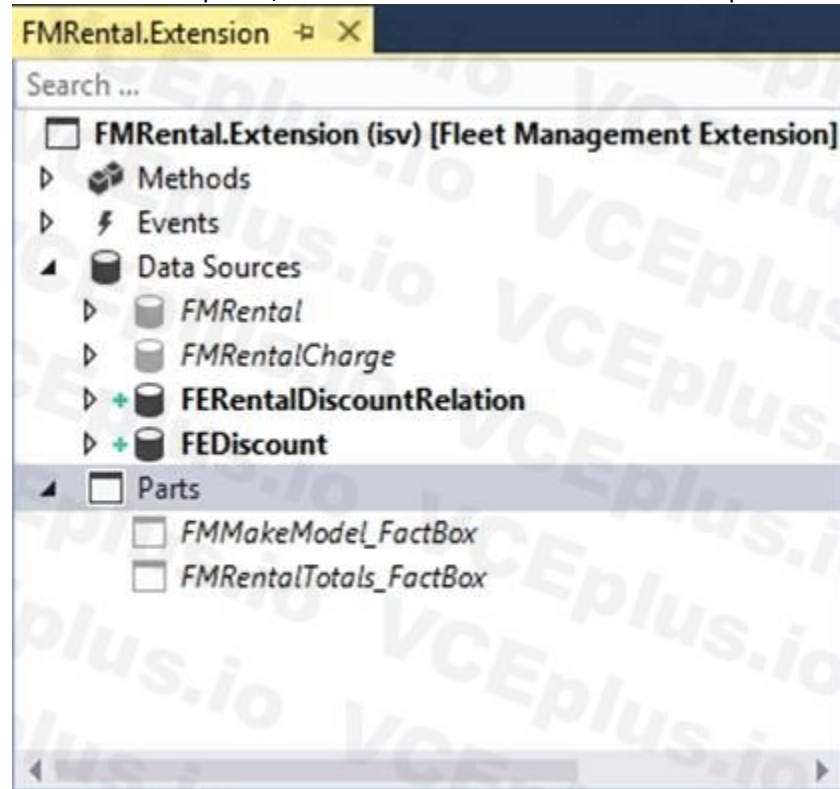


D: Example: Navigate to FM Rental.Extension in the Tree Designer

1. In the Visual Studio, in Solution Explorer, in the FleetManagement Discounts project, expand User Interface > Form Extensions.



The FMRental.Extension element is an extension element that extends the functionality of the FMRental form by adding two new data sources and a new tab control.
 2. In Solution Explorer, double-click FMRental.Extension to open the designer.



3. In the designer's search box, type 'e:' as shown in the image below. This filters the current designer to only show nodes that belong to the current extension.





Reference:

<https://docs.microsoft.com/en-us/dynamics365/fin-ops-core/dev-itpro/extensibility/customize-model-elements-extensions>

QUESTION 17

You are a Dynamics 365 Finance developer.

You have a form that displays customer records by using a listpage control. You must add related sales total information for the selected customer to the form.

You need to display the required related sales total information.

What should you add to the form?

- A. a custom lookup
- B. a tile
- C. a factbox
- D. an external feed
- E. a quick filter

Correct Answer: C

Section:

Explanation:

A list page presents a set of data on a user interface that is optimized so that you can browse records, find the right record, and then take an action upon that record. The list page lets the user search, filter, and sort the data. FactBoxes on the right side of the grid show related data for the active record.

Reference: <https://docs.microsoft.com/en-us/dynamics365/fin-ops-core/dev-itpro/user-interface/list-page-form-pattern>

QUESTION 18

You are developing a model extension for Dynamics 365 Finance.

The model extension must extend objects from the Application Foundation package.

You need to create and configure a new model for the extension.

Which two actions should you perform? Each correct answer presents part of the solution.

NOTE: Each correct selection is worth one point.

- A. Create an extension class that references the Application Foundation.
- B. Assign the model to the USR layer.
- C. Reference the Application Foundation package when creating the extension model.
- D. Create a new model that builds into its own separate assembly.
- E. Create a new model that is part of an existing package.

Correct Answer: A, D

Section:

Explanation:

A: You must create a class.

D: Extension lets you extend existing artifacts in a new model.

A model that contains only extension customizations can be compiled into its own assembly and be deployed in its own package.

Reference:

<https://docs.microsoft.com/en-us/dynamics365/fin-ops-core/dev-itpro/extensibility/class-extensions> <https://docs.microsoft.com/en-us/dynamics365/fin-ops-core/dev-itpro/dev-tools/model-split>

QUESTION 19

You are a Dynamics 365 Finance developer. You have a solution that records product weights. You must store up to four decimals of precision by using a standard Extended Data Type (EDT). You need to add the field in a new table. Which EDT should you extend?

- A. AmountMST
- B. MarkupValue
- C. Weight
- D. WeightBase

Correct Answer: D

Section:

Explanation:

Weight data can be maintained with a maximum of two decimals by default. If you require the ability to enter, maintain, and view weight data with a maximum precision of six decimals, you must extend the decimal point precision for the WeightBase extended data type.

Reference:

<https://docs.microsoft.com/en-us/dynamics365/fin-ops-core/dev-itpro/extensibility/decimal-point-precision>

QUESTION 20

Note: This question-is part of a series of questions that present the same scenario. Each question-in the series contains a unique solution that might meet the stated goals. Some question-sets might have more than one correct solution, while others might not have a correct solution.

After you answer a question-in this section, you will NOT be able to return to it. As a result, these questions will not appear in the review screen.

You are developing a form for Dynamics 365 Finance.

You need to add a button that allows users to run a report.

Solution: Create an output menu item. Add the output menu item to the form button and then link the report to the output menu item.

Does the solution meet the goal?

- A. Yes
- B. No

Correct Answer: B

Section:

Explanation:

Instead create an action menu item.

Reference:

<https://docs.microsoft.com/en-us/dynamics365/fin-ops-core/dev-itpro/user-interface/action-controls>

QUESTION 21

Note: This question-is part of a series of questions that present the same scenario. Each question-in the series contains a unique solution that might meet the stated goals. Some question-sets might have more than one correct solution, while others might not have a correct solution.

After you answer a question-in this section, you will NOT be able to return to it. As a result, these questions will not appear in the review screen.

You are developing a form for Dynamics 365 Finance.

You need to add a button that allows users to run a report.

Solution: Create an action menu item. Add the action menu item to the form button and then link the report to the action menu item.

Does the solution meet the goal?

- A. Yes
- B. No

Correct Answer: A

Section:

Explanation:

Reference:

<https://docs.microsoft.com/en-us/dynamics365/fin-ops-core/dev-itpro/user-interface/action-controls>

QUESTION 22

Note: This question-is part of a series of questions that present the same scenario. Each question-in the series contains a unique solution that might meet the stated goals. Some question-sets might have more than one correct solution, while others might not have a correct solution.

After you answer a question-in this section, you will NOT be able to return to it. As a result, these questions will not appear in the review screen.

You are developing a form for Dynamics 365 Finance.

You need to add a button that allows users to run a report.

Solution: Create a display menu item. Add the menu display item to the form button and then link the report to the display menu item.

Does the solution meet the goal?

A. Yes

B. No

Correct Answer: B

Section:

Explanation:

Instead create an action menu item.

Reference:

<https://docs.microsoft.com/en-us/dynamics365/fin-ops-core/dev-itpro/user-interface/action-controls>

QUESTION 23

You are a Dynamics 365 Finance developer.

You must extend the validateWrite method of the SalesLine table by using Chain of Command. The value of a variable named SalesPrice must be greater than or equal to zero when adding new lines.

You need to create an extension class.

Which two code segments can you use? Each correct answer presents a complete solution.

NOTE: Each correct selection is worth one point.

A.




```
[ExtensionOf(tableStr(SalesLine))]
public class SalesLine_Extension
{
    boolean validateWrite(boolean _skipCreditLimitCheck)
    {
        boolean ret;
        ret = next validateWrite(_skipCreditLimitCheck);
        if (ret && this.SalesPrice < 0)
        {
            ret = false;
        }
        return ret;
    }
}
```

B.

```
[ExtensionOf(tableStr(SalesLine))]
final class SalesLine_Extension
{
    boolean validateWrite(boolean _skipCreditLimitCheck = false)
    {
        boolean ret;
        ret = next validateWrite(_skipCreditLimitCheck);
        if (ret && this.SalesPrice < 0)
        {
            ret = false;
        }
        return ret;
    }
}
```

C.

dumps

```

[ExtensionOf(tableStr(SalesLine))]
final class SalesLine_Extension
{
    boolean validateWrite(boolean _skipCreditLimitCheck)
    {
        boolean ret;
        ret = next validateWrite(_skipCreditLimitCheck);
        if (ret && this.SalesPrice < 0)
        {
            ret = false;
        }
        return ret;
    }
}

```

D.

```

[ExtensionOf(tableStr(SalesLine))]
final class SalesLine_Extension
{
    boolean validateWrite(boolean _skipCreditLimitCheck)
    {
        boolean ret;
        try
        {
            ret = next validateWrite(_skipCreditLimitCheck);
        }
        catch
        {
            ret = false;
        }
        if (ret && this.SalesPrice < 0)
        {
            ret = false;
        }
        return ret;
    }
}

```

 Vdumps

Correct Answer: A, D

Section:

Explanation:

Incorrect Answers:

B: Can't use = false in the 4th line.

C: Second line must be start final class, public class

Reference:

<https://docs.microsoft.com/en-us/dynamics365/fin-ops-core/dev-itpro/data-entities/validations-defaults-unmapped-fields> <https://docs.microsoft.com/en-us/dynamics365/fin-ops-core/dev-itpro/extensibility/method-wrapping-coc>

QUESTION 24

You are a Dynamics 365 Finance developer. You have the following Extended Data Types (EDTs):

Name	Comments
AccountBase	Root EDT
AccountId	Derives from AccountBase

You plan to modify the EDT properties by using an extension.

You need to determine which operations can be performed.

Which operation is possible?

- A. Create an extension for AccountBase and decrease the field size.
- B. Create a derived EDT for AccountBase and increase the field size.
- C. Create a derived EDT for AccountId and decrease the field size.
- D. Create an extension for AccountBase and increase the field size.

Correct Answer: D

Section:

Explanation:

You can only set the new String size to a value equal to or larger than the base EDT value.

Incorrect Answers:

B, C: You can only modify the value if the EDT does not extend from another EDT.

Reference: <https://docs.microsoft.com/en-us/dynamics365/fin-ops-core/dev-itpro/extensibility/modify-edt>

QUESTION 25

HOTSPOT

You are a Dynamics 365 Finance developer.

You need to add a new status named InTransit to the SalesTable.SalesStatus field and use the status in code.

What should you do? To answer, select the appropriate options in the answer area.

NOTE: Each correct selection is worth one point.

Hot Area:



Answer Area

Requirement

Action or code segment

Add the new status to SalesStatus.

	▼
Create an extension of SalesStatus.	
Create an overlay of SalesStatus.	
Create a new enumeration that extends SalesStatus.	
Duplicate SalesStatus and add an element.	

Reference new values in code.

	▼
SalesStatus::InTransit	
SalesStatus.Extension::InTransit	
NewSalesStatus:InTransit	
SalesTable.SalesStatus	

Answer Area:

Answer Area

Requirement

Action or code segment

Add the new status to SalesStatus.

	▼
Create an extension of SalesStatus.	
Create an overlay of SalesStatus.	
Create a new enumeration that extends SalesStatus.	
Duplicate SalesStatus and add an element.	

Reference new values in code.

	▼
SalesStatus::InTransit	
SalesStatus.Extension::InTransit	
NewSalesStatus:InTransit	
SalesTable.SalesStatus	

Section:

Explanation:

Box 1: Create an extension of SalesStatus

To modify properties on an existing field in a table, you must first create an extension for the table.

Box 2: SalesStatus::InTransit

Incorrect Answers:

Overlay: Overlaying code, the now-outdated way to implement customer-specific functionality under Dynamics AX, involved customizing programming within Microsoft's code and recompiling the application.

Reference:

<https://docs.microsoft.com/sv-se/dynamics365/fin-ops-core/dev-itpro/extensibility/modify-existing-field>

<https://docs.microsoft.com/en-us/dynamics365/fin-ops-core/dev-itpro/extensibility/extensible-enums>

QUESTION 26

DRAG DROP

An organization uses Visual Studio to develop customizations for Dynamics 365 Supply chain Management.

You need to create an extension for the CustTable form and add the extension to the Visual Studio project.

Which three actions should you perform in sequence? To answer, move the appropriate actions from the list of actions to the answer area and arrange them in the correct order.

Select and Place:

Actions

Select the **IsExtensible** property for the CustTable form.

In Solution Explorer, drag the CustTable form into the project.

Rename the new CustTable extension.

In the Application Object Tree (AOT), right-click the CustTable form and select **Add to project**.

In the Application Object Tree (AOT), right-click the CustTable form.

Select **Create extension**.

Answer Area

[Empty box for answer]

[Empty box for answer]

[Empty box for answer]



Correct Answer:

Answer Area

Actions

Select the **IsExtensible** property for the CustTable form.

Rename the new CustTable extension.

In the Application Object Tree (AOT), right-click the CustTable form and select **Add to project**.

In Solution Explorer, drag the CustTable form into the project.

In the Application Object Tree (AOT), right-click the CustTable form.

Select **Create extension**.

Section:

Explanation:

Step 1: In Solution Explorer, drag the CustTable form into the project.

Step 2: In The Application Object Tree (AOT), right-click the CustTable form.

Step 3: Select Create extension.

Note: To create an extension (in general terms), follow these steps:

1. In the Application Explorer window, expand the AOT node.
2. Expand the node for the element that you want to extend. For example, in Classic view, extend the Data Models node, and then extend the Tables node to view all available tables.
3. Right-click the element that you want to extend.
4. Select Create extension to add an extension to your current project. Select Create extension in new project if you want to add the extension to a new project. The element will be added to a project in the Solution Explorer window, and it will open in the element designer.

Reference:

<https://docs.microsoft.com/en-us/dynamics365/business-central/dev-itpro/developer/devenv-extension-example>

QUESTION 27

HOTSPOT

A user reports that a form takes a long time to load. You suspect that the issue relates to a display method.

You need to resolve the issue.

Which actions should you perform? To answer, select the appropriate options in the answer area.

NOTE: Each correct selection is worth one point.

Hot Area:



Answer Area

Action

Improves performance

Add the following attribute to the display method:

[SysClientCachedataMethodAttribute(true)]

	▼
true	
false	

Set the value of the Enabled property to **No** for any display fields that are not needed.

	▼
true	
false	

Set the value of the Visible property to **No** for any display fields that are not needed.

	▼
true	
false	

Set the value of the Skip property to **Yes** for any display fields that are not needed.

	▼
true	
false	

Answer Area:

Answer Area

Action

Improves performance

Add the following attribute to the display method:

[SysClientCachedataMethodAttribute(true)]

	▼
true	
false	

Set the value of the Enabled property to **No** for any display fields that are not needed.

	▼
true	
false	

Set the value of the Visible property to **No** for any display fields that are not needed.

	▼
true	
false	

Set the value of the Skip property to **Yes** for any display fields that are not needed.

	▼
true	
false	



Section:

Explanation:

Box 1: Yes

The caching will avoid executing the display method unnecessarily.

To improve the performance of a display method, you can cache the method.

Box 2: No

Box 3: No

Box 4: No

Reference:

<https://docs.microsoft.com/en-us/dynamicsax-2012/developer/using-the-display-method-modifier>

QUESTION 28

You have an enumeration named truckStatus that has the following statuses:

Empty

Loaded

Completed

You have the following code:

```
switch (trunkTable.TruckStatus)
{
    case TruckStatus::Empty:
        Info("1");
        break;
    case TruckStatus::Loaded:
        Info("2");
        break;
    case TruckStatus::Completed:
        Info("3");
        break;
}
```

You need to add the following statuses to the enumeration: Quarantine, InTransit

What should you do?



- A. Add a post handler to the method that checks the enumeration and logic for your new enumeration values using the enumeration value.
- B. Add a post handler to the method that checks the enumeration and logic for your new enumeration values using a range comparison for your new values.
- C. Add a new case statement in the model of the existing code.
- D. Add a post handler to the method that checks the enumeration and logic for your new enumeration values using the integer value of the enumeration.

Correct Answer: A

Section:

QUESTION 29

Note: This question is part of a series of questions that present the same scenario. Each question in the series contains a unique solution that might meet the stated goals. Some question sets might have more than one correct solution, while others might not have a correct solution.

After you answer a question in this section, you will NOT be able to return to it. As a result, these questions will not appear in the review screen.

You have an enumeration named truckStatus that has the following statuses:

Empty

Loaded

Completed

You have the following code:


```
switch (trunkTable.TruckStatus)
{
    case TruckStatus::Empty:
        Info("1");
        break;
    case TruckStatus::Loaded:
        Info("2");
        break;
    case TruckStatus::Completed:
        Info("3");
        break;
}
```

You need to extend this enumeration and add the following statuses to the enumeration: Quarantine, InTransit. You must then modify code that validates the switch statement.

Solution: Add a post handler to the method that checks the enumeration and logic for your new enumeration values using the enumeration value.

```
if ( truckTable.TruckStatus == TruckStatus::Quarantine || truckTable.TruckStatus == TruckStatus::InTransit)
{
    Info("Extended");
}
```

Does the solution meet the goal?

- A. Yes
- B. No

Correct Answer: A

Section:

QUESTION 30

Note: This question is part of a series of questions that present the same scenario. Each question in the series contains a unique solution that might meet the stated goals. Some question sets might have more than one correct solution, while others might not have a correct solution.

After you answer a question in this section, you will NOT be able to return to it. As a result, these questions will not appear in the review screen.

You are adding a new field to the SalesTable form.

You must use an extension to add a status field onto the form.

You need to create the extension in the Application Object Tree (AOT) and add the extension to the demoExtensions model.

Solution: Navigate to the user interface forms node for the SalesTable form and modify the form.

Does the solution meet the goal?

- A. Yes
- B. No

Correct Answer: B

Section:

Explanation:

Instead navigate to the user interface forms section for the SalesTable form and create an extension.

Note: In Dynamics 365 Finance and Operations, the new fields will need to be added via a table extension. Create the extensions on the SalesTable.

Reference:

<https://stoneridgesoftware.com/how-to-extend-sales-order-update-functionality-to-custom-fields-in-d365-finance-and-operations/>

QUESTION 31

HOTSPOT

A company is implementing Dynamics 365 Finance. Vendors receive a risk rating that is determined by their on-time delivery performance as well as their credit rating.



You need to implement the following risk rating functionality:

The risk rating must accompany the credit rating when the credit rating is used.

The risk rating must be able to be used in other areas of the solution to determine processing outcomes.

The risk rating must consist of the following values:

1 = Good 2 = Medium 3 = Risky

The risk rating must be displayed in the Miscellaneous Details tab below the Credit Rating and Credit Limit fields in the Vendor form.

What should you do? To answer, select the appropriate options in the answer area.

NOTE: Each correct selection is worth one point.

Hot Area:

Requirement	Action
Create values for the risk ratings.	<input type="checkbox"/> Create a composite entity. <input type="checkbox"/> Create a new enum base data type. <input type="checkbox"/> Create a new enum extension. <input type="checkbox"/> Create an option set.
Create the risk rating field.	<input type="checkbox"/> Create a table extension. <input type="checkbox"/> Create an aggregate data entity. <input type="checkbox"/> Create an enum extension.
Ensure that credit limit and risk rating are always used together.	<input type="checkbox"/> Use a field group <input type="checkbox"/> Use a relationship. <input type="checkbox"/> Use an index.

Answer Area:

Requirement	Action
Create values for the risk ratings.	<ul style="list-style-type: none"> Create a composite entity. Create a new enum base data type. Create a new enum extension. Create an option set.
Create the risk rating field.	<ul style="list-style-type: none"> Create a table extension. Create an aggregate data entity. Create an enum extension.
Ensure that credit limit and risk rating are always used together.	<ul style="list-style-type: none"> Use a field group. Use a relationship. Use an index.

Section:

Explanation:

Box 1: Create a new enum base data type.

An enum is a list of literals.

Box 2: Create a table extension

After base enums and EDTs are created, they are usually added to a table to enable data capture.

Box 3: Use a field group

Field and Field Groups is the most common data entry subpattern and uses a dynamic number of columns to present multiple fields or groups of fields.

The group controls within this pattern can be used either to group fields under a label or to bind to a table field group.

Reference:

<https://docs.microsoft.com/en-us/learn/modules/build-edt-enums-finance-operations/>

<https://docs.microsoft.com/en-us/dynamics365/fin-ops-core/dev-itpro/user-interface/fields-field-groups-subpattern>

QUESTION 32

You are a Dynamics 365 Finance developer.

You need to create an extension class.

Which action should you perform?

- A. Mark the class as final.
- B. Add the class buffer as the first parameter.
- C. Add the suffix .extension to the file name.

D. Add the suffix `_myextension` to the file name.

Correct Answer: A

Section:

Explanation:

Extension classes are final classes that are adorned with the `ExtensionOf` attribute and that also have a name that has the `_Extension` suffix.

Because the classes are instantiated by the runtime system, it's not meaningful to derive from the extension class. Therefore, the extension class must be marked as `final`.

Reference:

<https://docs.microsoft.com/en-us/dynamics365/fin-ops-core/dev-itpro/extensibility/method-wrapping-coc>

QUESTION 33

Note: This question is part of a series of questions that present the same scenario. Each question in the series contains a unique solution that might meet the stated goals. Some question sets might have more than one correct solution, while others might not have a correct solution.

After you answer a question in this section, you will NOT be able to return to it. As a result, these questions will not appear in the review screen.

You must extend the class `SalesLineType` and add a new method that returns the day of week for the system's current date as an integer value.

You need to create a class that extends `SalesLineType` and adds the new method.

Solution: You create the following code:

```
[ExtensionOf(classStr(SalesLineType))]  
final class mySalesLineType_myExtension  
{  
    public int extensionMethodDayOfWeek()  
    {  
        return dayofwk(systemDateGet());  
    }  
}
```



Does the solution meet the goal?

A. Yes

B. No

Correct Answer: B

Section:

QUESTION 34

You are a Dynamics 365 Finance developer. You have the following Extended Data Types (EDTs):

Name	Comments
AccountBase	Root EDT
AccountId	Derives from AccountBase

You plan to modify properties of the EDTs by using an extension.

You need to determine which operations can be performed.

Which operation is possible?

A. Create an extension for `AccountBase` and decrease the field size.

B. Create a derived EDT for `AccountBase` and increase the field size.

C. Create an extension for `AccountId` and increase the field size.

D. Create an extension for AccountBase and modify the Form Help property.

Correct Answer: D

Section:

Explanation:

QUESTION 35

Note: This question is part of a series of questions that present the same scenario. Each question in the series contains a unique solution that might meet the stated goals. Some question sets might have more than one correct solution, while others might not have a correct solution.

After you answer a question in this section, you will NOT be able to return to it. As a result, these questions will not appear in the review screen.

You are adding a new field to the SalesTable form.

You must use an extension to add a status field onto the form.

You need to create the extension in the Application Object Tree (AOT) and add the extension to the demoExtensions model.

Solution: Navigate to the Visual Studio user interface forms extensions section for the SalesTable form and create an extension.

Does the solution meet the goal?

A. Yes

B. No

Correct Answer: A

Section:

Explanation:

Reference:

<https://stoneridgesoftware.com/how-to-extend-sales-order-update-functionality-to-custom-fields-in-d365-finance-and-operations/>

QUESTION 36

You are a Dynamics 365 Finance developer.

You need to create an extension class.

Which action should you perform?

A. Decorate the class with the ExtensionOf attribute.

B. Add the class buffer as the first parameter.

C. Mark the class as public.

D. Mark the class as private.

Correct Answer: A

Section:

Explanation:

Extension classes are final classes that are adorned with the ExtensionOf attribute and that also have a name that has the _Extension suffix.R

Reference:

<https://docs.microsoft.com/en-us/dynamics365/fin-ops-core/dev-itpro/extensibility/class-extensions>

QUESTION 37

Note: This question is part of a series of questions that present the same scenario. Each question in the series contains a unique solution that might meet the stated goals. Some question sets might have more than one correct solution, while others might not have a correct solution.

After you answer a question in this section, you will NOT be able to return to it. As a result, these questions will not appear in the review screen.

You have an enumeration named truckStatus that has the following statuses:

Empty

Loaded

Completed

You have the following code:

```
switch (trunkTable.TruckStatus)
{
    case TruckStatus::Empty:
        Info("1");
        break;
    case TruckStatus::Loaded:
        Info("2");
        break;
    case TruckStatus::Completed:
        Info("3");
        break;
}
```

You need to extend this enumeration and add the following statuses to the enumeration: Quarantine, InTransit. You must then modify code that validates the switch statement.

Solution: Add a post handler to the method that checks the enumeration and logic for your new enumeration values using a range comparison for your new values.

```
if ( truckTable.TruckStatus > TruckStatus::Completed)
{
    Info("Extended");
}
```

Does the solution meet the goal?

- A. Yes
- B. No

Correct Answer: A

Section:



QUESTION 38

Note: This question is part of a series of questions that present the same scenario. Each question in the series contains a unique solution that might meet the stated goals. Some question sets might have more than one correct solution, while others might not have a correct solution.

After you answer a question in this section, you will NOT be able to return to it. As a result, these questions will not appear in the review screen.

You have an enumeration named truckStatus that has the following statuses:

Empty

Loaded

Completed

You have the following code:

```
switch (trunkTable.TruckStatus)
{
    case TruckStatus::Empty:
        Info("1");
        break;
    case TruckStatus::Loaded:
        Info("2");
        break;
    case TruckStatus::Completed:
        Info("3");
        break;
}
```

You need to extend this enumeration and add the following statuses to the enumeration: Quarantine, InTransit. You must then modify code that validates the switch statement.

Solution: Add a post handler to the method that checks the enumeration and logic for your new enumeration values using the integer value of the enumeration.

```
if ( truckTable.TruckStatus == 4 || truckTable.TruckStatus == 5)
{
    Info("Extended");
}
```

Does the solution meet the goal?

- A. Yes
- B. No

Correct Answer: B

Section:

01 - Develop and Test Code

QUESTION 1

You are a Dynamics 365 Finance developer. You create an integer variable named totalSales.

You need to display the value from totalSales in an info statement.

Which three code segments can you use? Each correct answer presents a complete solution.

NOTE: Each correct selection is worth one point.

- A. `info(int2str(totalSales));`
- B. `info(totalSales);`
- C. `info(any2str(totalSales));`
- D. `info(strfmt("%1", totalSales));`
- E. `info(strLine(totalSales, 1));`



- A. Option A
- B. Option B
- C. Option C
- D. Option D
- E. Option E

Correct Answer: A, C, D

Section:

Explanation:

A: int2Str converts an integer to the equivalent string.

C: any2Str converts an anytype value to a str value. The anytype data type is a placeholder for any data type.

D: Example:

```
void MyMethod() { for (int i = 0; i < 10; i++) { info(strfmt("i is %1", i)); } }
```

Reference:

<https://docs.microsoft.com/en-us/dynamics365/fin-ops-core/dev-itpro/dev-ref/xpp-variables-data-types>

<https://docs.microsoft.com/en-us/dynamics365/fin-ops-core/dev-itpro/dev-ref/xpp-data-primitive#anytype>

QUESTION 2

You are a Dynamics 365 Finance developer.

You have a table named FMVehicle that contains a field named VehicleId. The table has an index named VehicleIdIdx on the VehicleId field. You declare a table buffer named vehicle to refer to the table.

You need to select all records from the FMVehicle table in ascending order based on VehicleId field in the vehicle variable.

Which embedded-SQL statement should you use?

- A. `select vehicle index VehicleId;`
- B. `select vehicle order by VehicleId;`
- C. `select VehicleId from vehicle order by VehicleId asc;`
- D. `select vehicle order by VehicleId desc;`

- A. Option A
- B. Option B
- C. Option C
- D. Option D

Correct Answer: A

Section:

Explanation:

QUESTION 3

HOTSPOT

You have the following code:

```
[SysEntryPointAttributeRole]
class CashDiscountDP extends SRSReportDataProviderBase
{
    CashDiscountTmp cashDiscountTmp;
    [SRSReportDataSetAttribute(tableStr(CashDiscountTmp))]
    public CashDiscountTmp getCashDiscountTmp()
    {
        select cashDiscountTmp;
        return cashDiscountTmp;
    }
    public boolean processReport()
    {
        ...
    }
}
```



For each of the following statements, select Yes if the statement is true. Otherwise, select No.

NOTE: Each correct selection is worth one point.

Hot Area:

Answer Area

Statement	Yes	No
You can use the class as an entry point for a security privilege.	<input type="radio"/>	<input type="radio"/>
The class allows SQL Server Reporting Services to retrieve data for the report.	<input type="radio"/>	<input type="radio"/>
processReport() has the correct method signature.	<input type="radio"/>	<input type="radio"/>

Answer Area:

Answer Area

Statement	Yes	No
You can use the class as an entry point for a security privilege.	<input checked="" type="radio"/>	<input type="radio"/>
The class allows SQL Server Reporting Services to retrieve data for the report.	<input checked="" type="radio"/>	<input type="radio"/>
processReport() has the correct method signature.	<input type="radio"/>	<input checked="" type="radio"/>

Section:

Explanation:

Box 1: Yes

Here CashDiscountDP is the name of the secure server method that is tagged with the SysEntryPointAttribute attribute.

Box 2: Yes

To define a report data provider class An RDP class extends the SRSReportDataProviderBase class. You set the SRSReportParameterAttribute attribute to the data contract you created for the RDP class.

Box 3: No

Instead:

```
public void processReport()
```

Reference:

<https://docs.microsoft.com/en-us/dynamicsax-2012/developer/security-privilege-properties>

<https://docs.microsoft.com/en-us/dynamicsax-2012/appuser-itpro/how-to-use-a-report-data-provider-class-in-a-report>

QUESTION 4

DRAG DROP

You create a Visual Studio project named ProductUpdates.

You must update data in a table named ProductTable. You must be able to run the code from Visual Studio.

You need to create an X++ class.

Which four actions should you perform in sequence? To answer, move the appropriate actions from the list of actions to the answer area and arrange them in the correct order.

Select and Place:

Answer Area

Actions

Add the ExtensionOf attribute to the class.

Set the class as the startup object.

Write database manipulation code in the class.

Build and run the class.

Create a runnable class and add it to the ProdcutUpdates project.

Create a class extension of the ProductTable and add it to the ProductUpdates project.



Correct Answer:

Answer Area

Actions

Add the ExtensionOf attribute to the class.

Create a class extension of the ProductTable and add it to the ProductUpdates project.

Create a runnable class and add it to the ProductUpdates project.

Write database manipulation code in the class.

Build and run the class.

Set the class as the startup object.



Section:

Explanation:

Reference:

<https://community.dynamics.com/365/financeandoperations/b/daxology/posts/runnable-class>

QUESTION 5

HOTSPOT

You are a Dynamics 365 Finance developer. You have the following code: (Line numbers are created for reference only.)

```

01 class TestQuestion
02 {
03     public static void main(Args _args)
04     {
05         TestQuestion testQuestion = new testQuestion();
06         testQuestion.run();
07     }
08     public void run()
09     {
10         TmpFrmVirtual tmpFrmVirtual;
11         str salesId;
12         int salesQty
13         tmpFrmVirtual.Id = "SID1234";
14         salesQty = 5;
15         this.updateValues(tmpFrmVirtual, int2Str(salesQty));
16         info(tmpFrmVirtual.Id);
17         info(salesQty);
18     }
19     public void updateValues(TmpFrmVirtual _tmpFrmVirtual, str _salesQty)
20     {
21         TmpFrmVirtual tmpFrmVirtual = _tmpFrmVirtual;
22         int salesQty = _str2int(salesQty);
23         tmpFrmVirtual.Id = "SID1234"-Updated";
24         salesQty = 10;
25     }
26 }

```



Which values does the info() method return? To answer, select the appropriate option in the answer area.
NOTE: Each correct selection is worth one point.

Hot Area:

Answer Area	
Parameter	Value
tmpFrmVirtual.Id	<div style="border: 1px solid black; padding: 2px;"> <div style="background-color: #f0f0f0; padding: 2px;">▼</div> <div style="padding: 2px;">SID1234</div> <div style="padding: 2px;">SID1234-Updated</div> <div style="padding: 2px;">SID1234 SID1234-Updated</div> </div>
salesQty	<div style="border: 1px solid black; padding: 2px;"> <div style="background-color: #f0f0f0; padding: 2px;">▼</div> <div style="padding: 2px;">5</div> <div style="padding: 2px;">10</div> <div style="padding: 2px;">15</div> </div>

Answer Area:

Answer Area	
Parameter	Value
tmpFrmVirtual.Id	<div style="border: 1px solid black; padding: 2px;"> <div style="background-color: #f0f0f0; padding: 2px;">▼</div> <div style="background-color: #e0ffe0; padding: 2px;">SID1234</div> <div style="padding: 2px;">SID1234-Updated</div> <div style="padding: 2px;">SID1234 SID1234-Updated</div> </div>
salesQty	<div style="border: 1px solid black; padding: 2px;"> <div style="background-color: #f0f0f0; padding: 2px;">▼</div> <div style="background-color: #e0ffe0; padding: 2px;">5</div> <div style="padding: 2px;">10</div> <div style="padding: 2px;">15</div> </div>

Section:

Explanation:

Box 1: SID1234

Parameters All methods have their own scope. A method can take one or more parameters. Within the scope of the method, these parameters are treated as local variables and are initialized with a value from the parameter in the method call. All parameters are passed by value, which means that you can't change the value of the original variable. You can change only the local variable in the method. This local variable is a copy of the original variable.

Box 2: 5

Reference:

<https://docs.microsoft.com/en-us/dynamics365/fin-ops-core/dev-itpro/dev-ref/xpp-classes-methods>

 Vdumps

QUESTION 6

HOTSPOT

You have a Dynamics 365 Finance environment.

You have the following code: (Line numbers are included for reference only.)

```
01 class SalesPriceDiscount
02 {
03     ...
04     public void calculatePrice
05     {
06         ...
07     }
08     public static AmountCur getDiscount(Percent markup)
09     {
10         ...
11     }
12 }
13 [ExtensionOf(classStr(SalesPriceDiscount))]
14 final class SalesPriceDiscountMy_Extension
15 {
16     public void calculatePrice()
17     {
18         ...
19         next calculatePrice()
20         ...
21     }
22 }
```

For each of the following statements, select Yes if the statement is true. Otherwise, select No.

NOTE: Each correct selection is worth one point.

Hot Area:



Answer Area

Statement	Yes	No
The calculatePrice() method in the extension class can access and manage public and protected methods and variables of the base class.	<input type="radio"/>	<input type="radio"/>
You can modify the calculatePrice() method in the extension class by adding conditional logic at line 20.	<input type="radio"/>	<input type="radio"/>
The static method getDiscount() in Line 10 of the base class can be wrapped and extended by adding business logic to the extension class.	<input type="radio"/>	<input type="radio"/>
The extension class can be instantiated by running the following code: <code>SalesPriceDiscountMy_Extension myInstance = new SalesPriceDiscountMy_Extension();</code>	<input type="radio"/>	<input type="radio"/>

Answer Area:

Answer Area

Statement	Yes	No
The calculatePrice() method in the extension class can access and manage public and protected methods and variables of the base class.	<input checked="" type="radio"/>	<input type="radio"/>
You can modify the calculatePrice() method in the extension class by adding conditional logic at line 20.	<input checked="" type="radio"/>	<input type="radio"/>
The static method getDiscount() in Line 10 of the base class can be wrapped and extended by adding business logic to the extension class.	<input checked="" type="radio"/>	<input type="radio"/>
The extension class can be instantiated by running the following code: <code>SalesPriceDiscountMy_Extension myInstance = new SalesPriceDiscountMy_Extension();</code>	<input type="radio"/>	<input checked="" type="radio"/>

Section:

Explanation:

Box 1: Yes



Class extension - Method wrapping and Chain of Command.

The functionality for class extension, or class augmentation, has been improved. You can now wrap logic around methods that are defined in the base class that you're augmenting. You can extend the logic of public and protected methods without having to use event handlers. When you wrap a method, you can also access public and protected methods, and variables of the base class. In this way, you can start transactions and easily manage state variables that are associated with your class.

Box 2: Yes In the following example, the wrapper around doSomething and the required use of the next keyword create a Chain of Command (CoC) for the method. CoC is a design pattern where a request is handled by a series of receivers. The pattern supports loose coupling of the sender and the receivers [ExtensionOf(classStr(BusinessLogic1))] final class BusinessLogic1_Extension { str doSomething(int arg) { // Part 1 var s = next doSomething(arg + 4); // Part 2 return s; } }

Box 3: Yes Instance and static methods can be wrapped by extension classes. If a static method is the target that will be wrapped, the method in the extension must be qualified by using the static keyword.

Box 4: No

Wrapper methods must always call next.

Note: Wrapper methods in an extension class must always call next, so that the next method in the chain and, finally, the original implementation are always called. This restriction helps guarantee that every method in the chain contributes to the result.

In the current implementation of this restriction, the call to next must be in the first-level statements in the method body.

Here are some important rules:

Calls to next can't be done conditionally inside an if statement.

Calls to next can't be done in while, do-while, or for loop statements.

A next statement can't be preceded by a return statement.

Because logical expressions are optimized, calls to next can't occur in logical expressions. At runtime, the execution of the complete expression isn't guaranteed.

Reference:

<https://docs.microsoft.com/en-us/dynamics365/fin-ops-core/dev-itpro/extensibility/method-wrapping-coc>

QUESTION 7

HOTSPOT

You are a Dynamics 365 Finance developer.

You have the following code: (Line numbers are included for reference only.)




```
01 public void tryMethod(int a, int b)
02 {
03     try
04     {
05         info("One");
06         int c = a/b;
07         info("Two");
08     }
09     catch
10     {
11         info("Three");
12         if (a == 2);
13         {
14             return;
15         }
16         else if (a == 3)
17         {
18             b = 3;
19             retry;
20         }
21     }
22     finally
23     {
24         info("Four");
25     }
26     info("Five");
27 }
```

You need to evaluate the code.

What is the correct output for the method? To answer, select the appropriate option in the answer area.

NOTE: Each correct selection is worth one point.

Hot Area:



Answer Area

Method	Output
tryMethod(5, 2);	<input type="text"/> One, Two, Four, Five One, Two, Five One, Three, Four, Five
tryMethod(4, 0);	<input type="text"/> One, Three, Four, Five One, Four, Five One, Two, Four, Five
tryMethod(2, 0);	<input type="text"/> One, Three, Four One, Three One, Three, Four, Five
tryMethod(3, 0);	<input type="text"/> One, Two, Four, Five One, Three, One, Two, Four, Five One, Three, Four, One, Two, Four, Five

Answer Area:

Method	Output
tryMethod(5, 2);	<input type="text" value="One, Two, Four, Five"/> <input type="text" value="One, Two, Five"/> <input type="text" value="One, Three, Four, Five"/>
tryMethod(4, 0);	<input type="text" value="One, Three, Four, Five"/> <input type="text" value="One, Four, Five"/> <input type="text" value="One, Two, Four, Five"/>
tryMethod(2, 0);	<input type="text" value="One, Three, Four"/> <input type="text" value="One, Three"/> <input type="text" value="One, Three, Four, Five"/>
tryMethod(3, 0);	<input type="text" value="One, Two, Four, Five"/> <input type="text" value="One, Three, One, Two, Four, Five"/> <input type="text" value="One, Three, Four, One, Two, Four, Five"/>

Section:

Explanation:

Box 1: One, Two, Four, Fire

The statements in the finally clause are executed when control leaves the try block, either normally or through an exception.

Box 2: One, Three, Four, Five

Box 3: One, Three

Return ends the call.

Box 4: One, Three, One, Two, Four, Five

Retry restarts the try statement.

Reference:

<https://docs.microsoft.com/en-us/dynamics365/fin-ops-core/dev-itpro/dev-ref/xpp-exceptions>

QUESTION 8

HOTSPOT

You have the following code:

```

public void CompareValues ()
{
    Date myDate = str2date('01/08/1901',123);
    boolean result1, result2, result3;
    result1 = (myDate + 1 == str2date('02/08/1901', 123));
    result2 = (int2str(real2int(myDate)) + 1 == str2date('02/08/1901', 123));
}

```

For each of the following statements, select Yes if the statement is true. Otherwise, select No.
 NOTE: Each correct selection is worth one point.

Hot Area:

Statement	Yes	No
The value of result1 = true	<input type="radio"/>	<input type="radio"/>
The value of result2 = true	<input type="radio"/>	<input type="radio"/>

Answer Area:

Statement	Yes	No
The value of result1 = true	<input checked="" type="radio"/>	<input type="radio"/>
The value of result2 = true	<input type="radio"/>	<input checked="" type="radio"/>

Section:

Explanation:

Box 1: Yes

Add 1 to a date adds one day.

Box 2: No

You cannot do a real2int conversion on a Date.

Reference:

<https://docs.microsoft.com/en-us/dynamics365/customerengagement/on-premises/customize/types-of-fields>

QUESTION 9

You are a Dynamics 365 Finance developer.

You have a table named FMVehicle that contains a field named VehicleId. The table has an index named VehicleIdIdx on the VehicleId field. You declare a table buffer named vehicle to refer to the table.

You need to select all records from the FMVehicle table in ascending order based on VehicleId field in the vehicle variable.

Which embedded-SQL statement should you use?



- A. `select vehicle index VehicleId;`
- B. `select vehicle index VehicleIdIdx;`
- C. `select VehicleId from vehicle order by VehicleIdIdx asc;`
- D. `select vehicle order by VehicleId desc;`

- A. Option A
- B. Option B
- C. Option C
- D. Option D

Correct Answer: B

Section:

Explanation:

The 'index VehicleIdIdx' statement will cause an Order By Asc of the fields contained in the index. In this case, that means an Order By Asc of the VehicleID field.

QUESTION 10

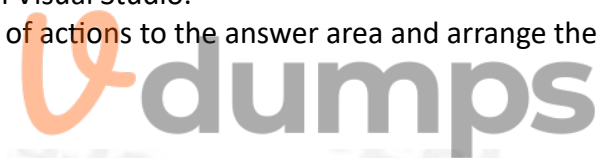
DRAG DROP

You create a Visual Studio project named CustomerDetailUpdate.

You must update data in a table named CustTable. You must be able to run the code from Visual Studio.

In which order should you perform the actions? To answer, move all actions from the list of actions to the answer area and arrange them in the correct order.

Select and Place:



Actions

Answer Area

- Create a runnable class and add the class to the CustomerDetailUpdate project
- Set the class as the startup project and run the class
- Build the project
- Write code in the class to update the customer table



Correct Answer:

Actions	Answer Area
	Create a runnable class and add the class to the CustomerDetailUpdate project
	Write code in the class to update the customer table
	Build the project
	Set the class as the startup project and run the class

Section:

Explanation:

Reference:

<https://community.dynamics.com/365/financeandoperations/b/daxology/posts/runnable-class>

QUESTION 11

You are a Dynamics 365 Finance developer. You create a class.

You need to mark the class to ensure that when code is compiled, the process fails if a specific method is called in the source code.

Which attribute should you use?

- A. SysEntryPointAttribute
- B. getAttributes
- C. SysAttribute
- D. SysObsoleteAttribute

Correct Answer: D

Section:

Explanation:

One use of the SysObsoleteAttribute class is to notify the compiler that the compile should fail if a particular method is called in the source code. The compiler rejects the compile, and displays the specific message that is stored in this use of the attribute.

Reference:

<https://docs.microsoft.com/en-us/dynamics365/fin-ops-core/dev-itpro/dev-ref/xpp-attribute-classes>

QUESTION 12

You are using the SysTest framework to test code in Visual Studio.

You need to create a unit test class.

Which three attributes can you use to create the class? Each correct answer presents a complete solution.

NOTE: Each correct selection is worth one point.

- A. TestFilter
- B. Priority

- C. Owner
- D. EntryPoint
- E. Test Property

Correct Answer: B, C, E

Section:

Explanation:

The SysTest framework now supports the major test attributes in the adaptor to be on par with the MSTest framework adaptor. This includes attributes like Category, Owner, Priority, and Test Property.

Note:

The Priority attribute SysTestPriority, which requires an integer value, is now available. A priority can only be specified once, but is supported on both the class and method level, with method level taking precedence over class level.

The Owner attribute, SysTestOwner, has also been added. This attribute was technically already supported for filtering in the Test Toolbox window, but the attribute itself was missing in X++. Similar to Priority, an owner can only be specified once and is supported on both the class and method level, with the method level taking precedence.

SysTestProperty specifies a property and a value (two strings), and can now be used in the Test Toolbox window in Visual Studio. Test Property can be specified multiple times, and can exist on both the class and method level.

Reference:

<https://docs.microsoft.com/en-us/dynamics365/fin-ops-core/dev-itpro/perf-test/systest-filtering>

QUESTION 13

HOTSPOT

You have the following class definition:

```
class UnitConv
{
    public static real PoundsToKilograms(real _pounds)
    {
        return _pounds * 0.45359237;
    }
    public static real FahrenheitCelsius(real _fahrenheit)
    {
        return (_fahrenheit - 32) = 5/9;
    }
}
```



You need to create an extension class and create a new static method in it that converts miles to kilometers and then call the method from another class.

How should you complete the code and call the method? To answer, select the appropriate options in the answer area.

NOTE: Each correct selection is worth one point.

Hot Area:

Answer Area

Extension class definition:

```
[ExtensionOf(classStr (UnitConv))]
```

```
final class CustUnitConv_Extension  
final class UnitConv_MyExtension  
static class UnitConvMy_Extension  
class UnitConv_Extension
```

```
{  
  public static CaseMileage MiToKm(CaseMileage _miles)  
  {  
    return _miles * 1.609344;  
  }  
}
```

Call the method:

```
var km = UnitConv::MiToKm(62.1371);  
CaseMileage km = UnitConv_MyExtension::MiToKm(62.1371);  
UnitConvMy_Extension cUC = new UnitConv(); int km = cUC.MiToKm(62.1371);  
UnitConv_Extension uCE = new UnitConv(); real km = uCE.MiToKm(62.1371);
```

Answer Area:

Answer Area

Extension class definition:

```
[ExtensionOf(classStr (UnitConv))]
```

```
final class CustUnitConv_Extension  
final class UnitConv_MyExtension  
static class UnitConvMy_Extension  
class UnitConv_Extension  
  
{  
    public static CaseMileage MiToKm(CaseMileage _miles)  
    {  
        return _miles * 1.609344;  
    }  
}
```

Call the method:

```
var km = UnitConv::MiToKm(62.1371);  
CaseMileage km = UnitConv_MyExtension::MiToKm(62.1371);  
UnitConvMy_Extension cUC = new UnitConv(); int km = cUC.MiToKm(62.1371);  
UnitConv_Extension uCE = new UnitConv(); real km = uCE.MiToKm(62.1371);
```

Section:

Explanation:

Box 1: final class UnitConv_MyExtension

Box 2: var km = UnitConv::miToKm(62.1371);

Reference:

<https://docs.microsoft.com/en-us/dynamics365/fin-ops-core/dev-itpro/extensibility/method-wrapping-coc>

QUESTION 14

HOTSPOT

You are the Dynamics 365 Finance Developer.

You have the following class definition:

```
class WebShopOrderValidations  
{  
    public static void checkQtyValue(int Qty = 0)  
    {  
        ...  
    }  
}
```

You need to create an extension class and wrap the method by using Chain of Command (CoC), if the value of the Qty variable is less than 5, the code must cause an exception.

How should you complete the code segment? To answer, select the appropriate options in the answer area.

NOTE: Each correct selection is worth one point.

Hot Area:

Answer Area

```
[ExtensionOf(classStr(WebShopOrderValidations))]
```

▼
final class WebShopOrdVal_Extension
final class WebShopOrderValidations_MyExtension
static class WebShopOrderValidationsMy_Extension
class WebShopOrderValidations_Extension

```
{
```

▼
public static void checkQtyValue(int Qty)
public void checkQtyValue(int Qty)
public static int checkQtyValue(int Qty)
public static void checkQtyValue(int Qty = 0)

```
{  
    next checkQtyValue(Qty);  
    if (Qty < 5)  
    {  
        throw error("Quantity cannot be smaller than 5");  
    }  
}  
}
```

 **vdumps**

Answer Area:

Answer Area

```
[ExtensionOf(classStr(WebShopOrderValidations))]
```

```
final class WebShopOrdVal_Extension  
final class WebShopOrderValidations_MyExtension  
static class WebShopOrderValidationsMy_Extension  
class WebShopOrderValidations_Extension
```

```
{  
    public static void checkQtyValue(int Qty)  
    public void checkQtyValue(int Qty)  
    public static int checkQtyValue(int Qty)  
    public static void checkQtyValue(int Qty = 0)  
}  
    next checkQtyValue(Qty);  
    if (Qty < 5)  
    {  
        throw error("Quantity cannot be smaller than 5");  
    }  
}
```

Section:

Explanation:

Box 1: final class WebShopOrderVal_Extension

Box 2: public static void checkQtyValue(int Qty)

Incorrect Answers:

Public void ...

If a static method is the target that will be wrapped, the method in the extension must be qualified by using the static keyword.

Int Qty=0

The method signature in the wrapper method must not include the default value of the parameter.

Public int

Reference:

<https://docs.microsoft.com/en-us/dynamics365/fin-ops-core/dev-itpro/extensibility/method-wrapping-coc>

QUESTION 15

You create a new class.

Class compilation must fail if a specific method in the source code is called.

You need to mark the class with the appropriate attribute.

Which attribute should you use?

- A. SysAppSecurityAttribute
- B. SysTestCategory
- C. SysObsoleteAttribute
- D. SysAttribute

Correct Answer: C

Section:

Explanation:

Reference:

<https://docs.microsoft.com/en-us/dynamicsax-2012/developer/overview-of-attribute-classes>

01 - Implement Security and Optimize Performance

Case study

This is a case study. Case studies are not timed separately. You can use as much exam time as you would like to complete each case. However, there may be additional case studies and sections on this exam. You must manage your time to ensure that you are able to complete all questions included on this exam in the time provided.

To answer the questions included in a case study, you will need to reference information that is provided in the case study. Case studies might contain exhibits and other resources that provide more information about the scenario that is described in the case study. Each question is independent of the other questions in this case study.

At the end of this case study, a review screen will appear. This screen allows you to review your answers and to make changes before you move to the next section of the exam. After you begin a new section, you cannot return to this section.

To start the case study To display the first question in this case study, click the Next button. Use the buttons in the left pane to explore the content of the case study before you answer the questions. Clicking these buttons displays information such as business requirements, existing environment, and problem statements. If the case study has an All Information tab, note that the information displayed is identical to the information displayed on the subsequent tabs. When you are ready to answer a question, click the Question button to return to the question.

Background

Wide World Importers sell office supplies, furniture, and fittings to their customers across the United States. The company has the following locations:
a retail store in Seattle a warehouse in Seattle a customer support and call center in Atlanta a team of field workers that provide furniture installation services at customer sites.

Wide World Importers plans to implement Dynamics 365 Finance and Microsoft Azure cloud platform features.

Current environment

Customers may place orders by email, phone, or by using the company's website. The company authorizes and processes credit card transactions by using a web-based application. Customer, inventory, supplier, and other master and transactional data is stored in a legacy database.

The company collects feedback from customers by phone or a form on the company's website and maintains the data in a Microsoft Excel workbook.

Wide World Importers runs on-premises applications to manage payroll and workers compensation. The company has a set of Microsoft Power BI dashboards that present data from a reporting database.

The company creates a Lifecycle Services (LCS) implementation project and completes Dynamics 365 Finance onboarding.

The company maintains production, quality assurance (QA), development, user acceptance testing (UAT), and build environments.

Requirements

General

You must configure a cloud-based Dynamics 365 Finance development environment and enable code extension that support updates.

You must configure version control and a Build environment.

You must migrate all legacy data to the new system.

You must implement best practices for X++ coding, the data model, caching, and security.

All new code must be unit tested in a development environment and then validated by the QA team before code is added to source control.

Business processes

You must configure vendor trade agreements.

Products must be shipped directly from suppliers to customers depending on customer location to save indirect costs.

You must collect customer feedback on products shipped directly from vendors.

You must deploy code to a UAT environment for testing before deploying code to production.

You must validate all entries for the purchase order creation form.

You must develop a web portal that allows customers to browse products, place orders, and check order status. Product data for the web portal must be integrated as periodic batches.

Business systems You must install and configure a third-party solution for credit card processing within Dynamics 365 Finance. The third-party company will provide a deployable package.

The workers compensation application must be able to call an API to update worker compensation details in Dynamics 365 Finance.

You must develop a process to import payroll journals into the system.

You must configure the warehouse mobile device portal for warehouse operations.

You must install a third-party solution to support web portal integration. The solution is supplied as a source code model file.

Vendor exclusion list

You must develop a new solution to maintain a Vendor exclusion list for each customer and item combination. The solution must meet the following requirements:

Isolate all new vendor exclusion codes as a new assembly by creating a table named VendExclusions.

Create an index for the table named PrimaryIdx that uses the following fields: CustAccount, ItemId, VendAccount.

Ensure that users can open the Vendor Exclusion list report from the customer master form. The list must display the customer account, Item ID, and Vendor account fields.

Implement the Excel integration for the Vendor Exclusion List form.

Provide functionality to periodically export the Vendor exclusion list to prepare reports by using standard reporting capabilities of Dynamics 365 Unified Operations.

Develop necessary security permissions to view and maintain the new Vendor exclusion list functionality and reporting. Users with maintain rights will be able create, update, and delete the exclusion list. Permissions must be assigned to security roles to match company security model.

Maintain referential integrity with other tables.

Users must be presented with a warning message before a direct delivery purchase order is created for a vendor in exclusion list.

Sales managers must be alerted when a new exclusion record is added to the system.

Security

You must implement the record level audit feature to identify the users who created the record.

Grant specific users rights to maintain the vendor exclusion list by using Excel.

You must implement validation to check whether a proposed direct delivery purchase order vendor is on the exclusion list for the customer and product combination.

Issues

User1 is not able to access many features in the system. You must provide User1 administrator rights.

A sales manager suspects a data-related issue in the vendor exclusion list. User1 must identify the user who created the referenced exclusion records.

Developer2 joins the company and does not have access to a development environment or source control.

User2 reports performance issues when they generate direct delivery purchase orders after current updates are applied.

User2 reports that they cannot access new functionality and reports.

QUESTION 1

You need to configure security for the Vendor Exclusion List report.

What are two possible ways to achieve this goal? Each correct answer presents a complete solution.

NOTE: Each correct selection is worth one point.

- A. Create a new privilege, add a reference to an output menu item, and then add the new privilege to a role.
- B. Create a new security policy and add an output menu item. Add the new security policy to duty extension and then to a role extension.
- C. Create a new privilege extension and add an output menu item. Add the privilege to a duty extension and then to a role extension.
- D. Create a new privilege and assign it to an output menu item. Add the new privilege to a duty extension and then add the duty extension to a role.

Correct Answer: A, D

Section:

Explanation:

Scenario: Develop necessary security permissions to view and maintain the new Vendor exclusion list functionality and reporting. Users with maintain rights will be able create, update, and delete the exclusion list.

Permissions must be assigned to security roles to match company security model.

The privileges are simply a way to grant permissions to an entry point, which can be services, to a duty, role, or even directly to a user. Typically, we only add entry points to a privilege, such as menu items.

D: You can extend a Security Role or a Security Duty to add new duties/privileges to these elements.

Incorrect Answers:

C: We can't extend security privileges, we would always create a new privilege.

Reference: <https://www.oreilly.com/library/view/extending-microsoft-dynamics/9781786467133/40a348f3-0f4c-4d47-a566-59f3a2e6afa0.xhtml> <https://docs.microsoft.com/en-us/dynamics365/fin-ops-core/dev-itpro/extensibility/customization-overlayering-extensions#security-role-and-duty-extensions>

02 - Implement Security and Optimize Performance

Case study

This is a case study. Case studies are not timed separately. You can use as much exam time as you would like to complete each case. However, there may be additional case studies and sections on this exam. You must manage your time to ensure that you are able to complete all questions included on this exam in the time provided.

To answer the questions included in a case study, you will need to reference information that is provided in the case study. Case studies might contain exhibits and other resources that provide more information about the scenario that is described in the case study. Each question is independent of the other questions in this case study.

At the end of this case study, a review screen will appear. This screen allows you to review your answers and to make changes before you move to the next section of the exam. After you begin a new section, you cannot return to this section.

To start the case study To display the first question in this case study, click the Next button. Use the buttons in the left pane to explore the content of the case study before you answer the questions. Clicking these buttons displays information such as business requirements, existing environment, and problem statements. If the case study has an All Information tab, note that the information displayed is identical to the information displayed on the subsequent tabs. When you are ready to answer a question, click the Question button to return to the question.

Background

Overview

First Up Consultants provides Commercial Cleaning services to its clients. The company purchases all its cleaning supplies from Best For You Organics Company.

First Up Consultants is using a cloud-based Dynamics 365 Finance instance. The system has a foundation table named CashDisc that contains one cash discount record for each cash discount type.

Best For You Organics Company invoices First Up Consultants and allows cash discounts based on how fast an invoice is paid. First Up Consultants is entitled to a two percent discount from Best for You Organics for any invoice that is paid within 10 days and has a minimum invoice amount of \$2,500.

Business requirements

All new and extended objects must be located in an existing model named FinanceExt. The creation of new models is not permitted.

Best For You Organics Company requires that First Up Consultants apply specific minimum invoice amounts to each cash discount record. A cash discount may only be applied when the minimum invoice amount requirement has been met.

The new field must be added to the CashDisc form grid with the allowable visible number of characters set to 10.

First Up Consultants must retrieve the required Cash Discount methods and corresponding minimum invoice amounts directly from Best For You Organics Company's enterprise resource planning (ERP) system.

The Chief Financial Officer (CFO) requires the following reports:

A report that shows all outstanding invoices, their cash discount types including the new minimum threshold applicable, and the amount of the discount. The report must only be accessed by users who are members of the Accounts

Payable Manager role.

You must create a Microsoft Excel workbook that lists unpaid invoices to Best For You Organics Company that have a due date earlier than 5/1/2019 and an Invoice Amount between \$20,000 and \$100,000.

Cash discounts for unpaid invoices must be updated with the new minimum invoice amounts.

Technical requirements

Vendor Invoices Past Due form

You must be able to filter the grid on the Vendor Invoices Past Due form. By default, you must filter the form based on the Due Date, Invoice Amount, and Vendor columns. Users must be able to apply reusable user-specific filters to a page using multiple fields.

CashDisc form

You must extend the CashDisc form to add a new field named MinimumInvoiceAmount to the form. You must add a new Extended Data Type to the extension model for the new field. The new field must be added above the discount method field. The field must display 10 characters.

The accounts payable manager and the accounts payable clerk have Delete access to the form. You must alter permissions to limit accounts payable clerks to have only View access to the form.

Cash Discount Records report You must create a report that shows a list of CashDisc records. You must include the MinimumInvoiceAmount field and filtered data by using the CashDisc.DiscMethod field. Applicable security objects must be created in the existing "FinanceExt" model and configured so the report is accessible by those users to the accounts payable role.

Batch jobs

You must create a batch job that runs on the last day of each month to update the current unpaid invoices with changes in the minimum invoice amount. The job must meet the following requirements:

Accept the following parameters: Vendor, DueDate.

Be callable by an Action menu item.

Allow users to specify vendors to include in the job.

Use SysOperation Framework for all batch jobs.

You must create a batch job to identify modified CashDisc.MinimumInvoiceAmount values and apply these to open Purchase Lines.

QUESTION 1

HOTSPOT

You need to configure security for the CashDisc form.

What changes should you make? To answer, select the appropriate options in the answer area.

NOTE: Each correct selection is worth one point.

Hot Area:

Answer Area

Account

Action

Accounts Payable Manager



Duplicate the role and modify the existing privilege entry point access.

Create a new duty and privilege and add both to the role.

Run the security tool and validate access for the role.

Accounts Payable Clerk



Create a new role for the AP clerk and restrict delete access for the CashDisc form.

Create a new duty and add the existing privilege and add duty to the role.

Answer Area:

Answer Area

Account

Action



Accounts Payable Manager



Duplicate the role and modify the existing privilege entry point access.

Create a new duty and privilege and add both to the role.

Run the security tool and validate access for the role.

Accounts Payable Clerk



Create a new role for the AP clerk and restrict delete access for the CashDisc form.

Create a new duty and add the existing privilege and add duty to the role.

Section:

Explanation:

03 - Implement Security and Optimize Performance

QUESTION 1

HOTSPOT

You are a Dynamics 365 Finance developer. You create a form.

You must ensure that only sales managers can view the form.

You need to set up security for the form.

What should you do? To answer, select the appropriate options in the answer area.

NOTE: Each correct selection is worth one point.

Hot Area:

Answer Area

Step	Action
1	<input type="checkbox"/>
	Add the menu item for the form to the entry point node of a new privilege.
	Add the form object to the entry point node of a new privilege.
2	<input type="checkbox"/>
	Add the privilege to a new duty.
	Add the menu item for the form to the directaccesspermissions node of a new privilege.
3	<input type="checkbox"/>
	Add the duty to the security role for sales managers.
	Add the security policy to the security role for sales managers.

Answer Area:

Answer Area

Step	Action
1	
	Add the menu item for the form to the entry point node of a new privilege.
	Add the form object to the entry point node of a new privilege.
2	
	Add the privilege to a new duty.
	Add the menu item for the form to the directaccesspermissions node of a new privilege.
3	
	Add the duty to the security role for sales managers.
	Add the security policy to the security role for sales managers.

Section:

Explanation:

Step 1: Add the form object to the entry point node of a new privilege.

Your desired security privilege you can either directly set form control permissions or Entry Points.

For the Entry point method you need first need to add new entry point and set its object type and object name properties or for existing ones select desired entry point and click on drop down arrow and on controls right click and select new control, and now set its grant and name properties to desired control and its access rights.

Step 2: Add the privilege to a new duty

You need to assign this privilege in desired security role and security duty.

Step 3: Add the duty to the security role for sales managers.

Reference:

<https://www.cloudfronts.com/set-form-control-access-via-security-role-in-d365-finance/>

QUESTION 2

HOTSPOT

You are a Dynamics 365 Finance developer.

You need to create a security rule that meets the following requirements:

Provide the same permissions as HcmWorkerActionHireRead

Assign the Update level access and the HcmHumanResourceMamager Role

Which settings should you use? To answer, select the appropriate option in the answer area.

NOTE: Each correct selection is worth one point.

Hot Area:

Answer Area

Setting	Property
Operation	▼
	Insert
	Update
	Delete
	InsertUpdateDelete
Set HcmHymanResourceManager	▼
	Primary Table
	Query
	Role Name
	Operation

Answer Area:
Answer Area

Setting	Property
Operation	▼
	Insert
	Update
	Delete
	InsertUpdateDelete
Set HcmHymanResourceManager	▼
	Primary Table
	Query
	Role Name
	Operation

Section:
 Explanation:

QUESTION 3

DRAG DROP

A company uses Dynamics 365 Unified Operations.

You need to implement role-based security for a set of fields in a table.

How should you arrange the security elements? To answer, drag the appropriate security elements to the correct locations. Each element may be used once, more than once, or not at all. You may need to drag the split bar between panes or scroll to view content.

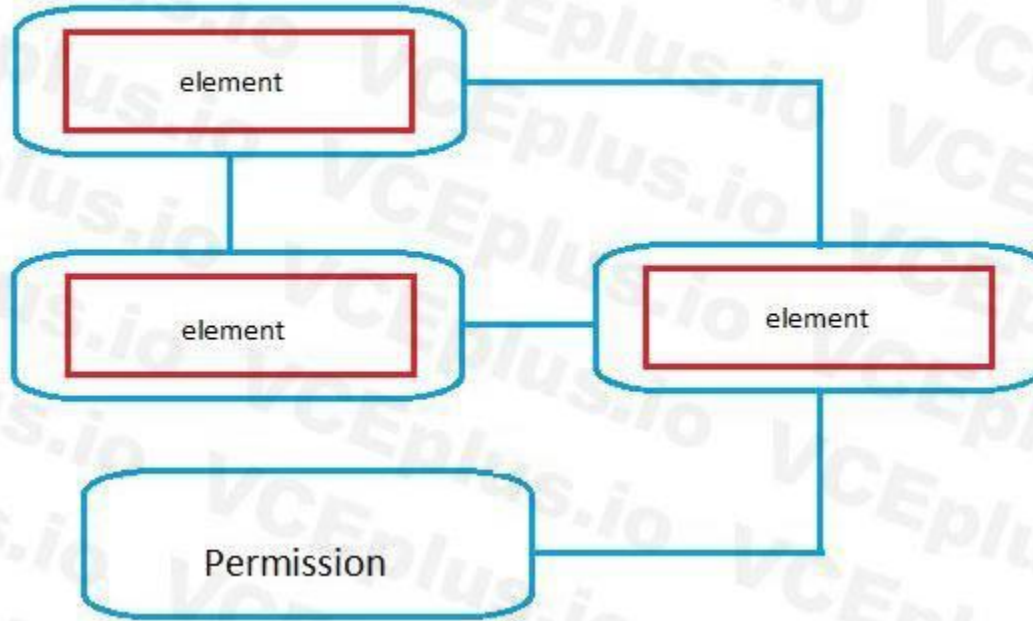
NOTE: Each correct selection is worth one point.

Select and Place:

Elements

- Role
- Privilege
- Duty

Answer Area



Correct Answer:

Elements

-
-
-

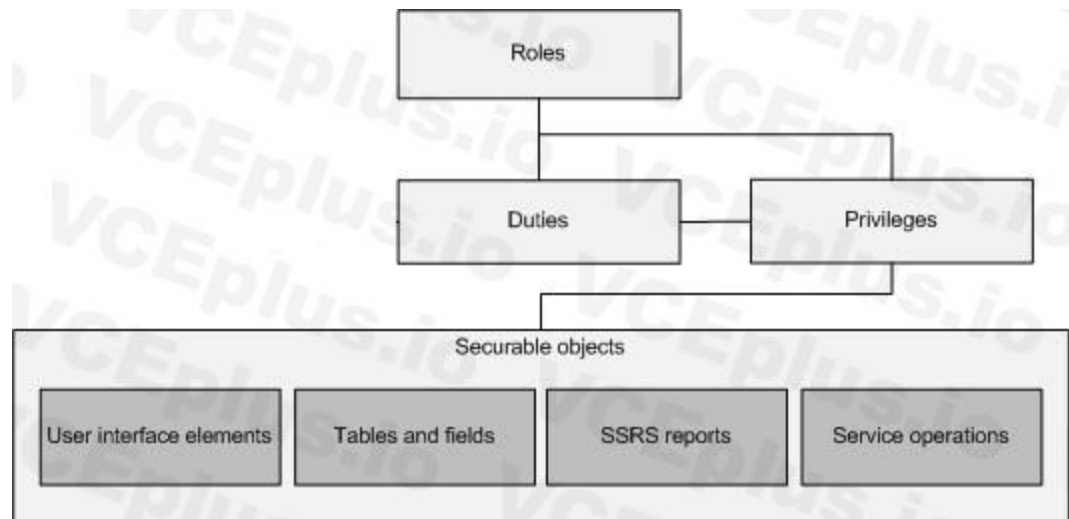
Answer Area



Section:

Explanation:

The following illustration shows the elements of role-based security and their relationships.



Reference:
<https://docs.microsoft.com/en-us/dynamics365/fin-ops-core/dev-itpro/sysadmin/role-based-security>

QUESTION 4

DRAG DROP

You are a Dynamics 365 Finance developer.

You need to use the Extensible Data Security (SDS) framework to restrict to the data in the Sales table form based on the customer group and the role of the user.

Which four actions should you perform in sequence? To answer, move the appropriate actions from the list of actions to the answer area and arrange them in the correct order.

Select and Place:



Answer Area

Actions

- Create a security policy that links to the query and primary table.
- Create a query to define filters.
- Define the context for the rule.
- Define the list of constrained tables.
- Assign the newly created role to the user.
- Create new user role and add required privileges.

Correct Answer:

Answer Area

Actions

Create a security policy that links to the query and primary table.

Create a query to define filters.

Create new user role and add required privileges.

Assign the newly created role to the user.

Define the list of constrained tables.

Define the context for the rule.

Section:

Explanation:

Step 1: Create a new user role and add required privileges.

Individual security permissions are combined into privileges, and privileges are combined into duties. The administrator grants security roles access to the program by assigning duties and privileges to those roles.

Step 2: Assign the newly created role to the user.

Step 3: Define the list of constrained tables.

Add the constrained tables and views.

Step 4: Define the context of the rule.

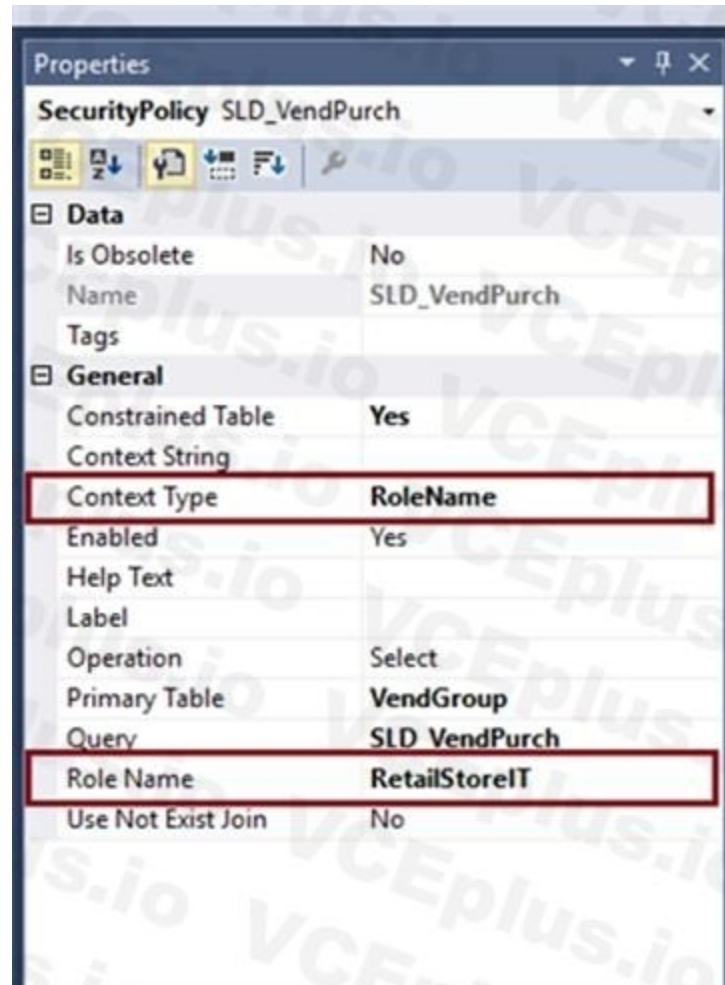
Set the context.

Set the ContextType property to one of the following:

ContextString – Set the property to this value if a global context is to be used to determine whether the policy should be applied. When required, this context string needs to be set by the application using the XDS::SetContext API.

RoleName – Set the property to this value if the policy should be applied only if a user in a specific role accesses the constrained tables.

RoleProperty – Set the property to this value if the policy is to be applied only if the user is a member of any one of a set of roles that have the ContextString property set to the same value.



Reference:

<https://docs.microsoft.com/en-us/dynamics365/fin-ops-core/dev-itpro/sysadmin/security-architecture>
<https://community.dynamics.com/365/b/exploringdynamics365/posts/extensible-data-security-in-d365>

Vdumps

QUESTION 5

HOTSPOT

You are a Dynamics 365 Finance developer.

Users are experiencing slower load times for a data table on the All Customers form.

You need to update caching for the table in Dynamics 365 to improve data retrieval times.

How should you configure CacheLookup properties? To answer, select the appropriate options in the answer area.

NOTE: Each correct selection is worth one point.

Hot Area:

Answer Area

Property

Value

Set-based caching

	▼
Entire table	
None	
Found	
FoundandEmpty	

Single-record caching

	▼
Found	
Entire table	
None	
SurrogateKey	

Answer Area:

Answer Area

Property

Value

Set-based caching

	▼
Entire table	
None	
Found	
FoundandEmpty	

Single-record caching

	▼
Found	
Entire table	
None	
SurrogateKey	



Section:

Explanation:

Box 1: Entire table

In Microsoft Dynamics AX, groups of records can be cached all at once with set-based caching. Set-based caching can be implemented in two ways:

At design time, by setting the table's CacheLookup property to EntireTable.

In code, by using the RecordViewCache class.

Box 2: Found

Record caching is enabled for a table when all the following statements are true:

The CacheLookup property on the table is enabled by setting it to one of the following values:

NotInTTS, Found, FoundAndEmpty.

The record buffer disableCache method has not been called with a parameter of true.

Reference:

<https://docs.microsoft.com/en-us/dynamicsax-2012/developer/set-based-caching>

<https://docs.microsoft.com/en-us/dynamicsax-2012/developer/single-record-caching>

QUESTION 6

DRAG DROP

You are a Dynamics 365 Finance developer.

You need configure table caching.

Which CacheLookup properties should you use? To answer, drag the CacheLookup properties to the correct table. Each property may be used once, more than once, or not at all. You may need to drag the split bar between panes or scroll to view content.

NOTE: Each correct selection is worth one point.

Select and Place:

CacheLookup properties

- EntireTable
- NotInTTS
- Found
- FoundAndEmpty

Answer Area

Table type	CacheLookup property
Parameters	
Transaction	
Master data	
Region specific master data	

Correct Answer:

CacheLookup properties

-
-
-
-

Answer Area

Table type	CacheLookup property
Parameters	FoundAndEmpty
Transaction	NotInTTS
Master data	EntireTable
Region specific master data	Found

Section:

Explanation:

Box 1: FoundAndEmpty

All selects on caching keys are cached, including selects that are not returning data.

All caching key selects are returned from caching if the record exists there, or the record is marked as nonexistent in the cache. A select forUpdate in a transaction forces reading from the database and replaces the record in the cache.

An example of FoundAndEmpty record caching is in the Discount table in the Microsoft Dynamics AX standard application. By default, the Discount table has no records. By using a FoundAndEmpty cache on this table, the keys that are queried for but not found are stored in the cache. Subsequent queries for these same non-existent records can be answered from the cache without a round trip to the database.

Box 2: NotInTTS

All successful caching key selects are cached.

When in a transaction (after ttsBegin), no caches made outside the transaction are used. When inside a transaction, the record is read once from the database and subsequently from the cache. The record is select-locked when reading in a transaction, which ensures that the record cached is not updated while the transaction is active.

A typical example of the NotInTTS property is on the CustTable in the Microsoft Dynamics AX application. It is acceptable to read outdated data from the cache outside a transaction, but when data is used for validation or creating references, it is ensured that the data is real-time.

Box 3: EntireTable Creates a set-based cache on the server. The entire table is cached as soon as at least one record is selected from the table. An EntireTable cahce is flushed whenever an insert, update or delete is made to the table. So first select read all records from DB for the selected company and all the further selects will take data from the cache instead of DB calls.

Box 4: Found All successful caching key selects are cached. All caching key selects are returned from the cache if the record exists there. A select forUpdate in a transaction forces reading from the database and replaces the record in the cache.

This is typically used for static (lookup) tables, such as Unit, where the record usually exists.

Reference:

<http://gautamax.blogspot.com/2017/01/cache-lookup-property-of-table-in-ax.html>

QUESTION 7

You use the performance timer to monitor and optimize Dynamics 365 performance.

You need to view information about how many users are currently using the application.

Which performance counter should you use?

- A. Services Session Provider
- B. Web Client Session
- C. Forms
- D. GC

Correct Answer: A

Section:

Explanation:

Reference:

<https://docs.microsoft.com/en-us/dynamics365/fin-ops-core/dev-itpro/perf-test/performance-timer>

QUESTION 8

DRAG DROP

A company uses Dynamics 365 Finance.

A user is unable to access the new Customer Credit Limit report.

You need to configure security for the report.

Which three actions should you perform in sequence? To answer, move the appropriate actions from the list of actions to the answer area and arrange them in the correct order.

Select and Place:



Actions

- Add the duty extension to a role
- Create a new privilege and duty extension
- Add the new privilege to a duty extension and output the menu item to the privilege
- Add a display menu item to the privilege
- Create a new security policy and duty extension

Answer Area



Correct Answer:

Actions

-
-
-
- Add a display menu item to the privilege
- Create a new security policy and duty extension



Answer Area



- Create a new privilege and duty extension
- Add the new privilege to a duty extension and output the menu item to the privilege
- Add the duty extension to a role

Section:

Explanation:

QUESTION 9

HOTSPOT

You are a Dynamics 365 Finance developer.

You launch the Performance Timer tool to troubleshoot performance issues with a business process.

You need to view the results from the tool.

What does the tool present? To answer, select the appropriate options in the answer area.

NOTE: Each correct selection is worth one point.

Hot Area:

Answer Area

Performance Timer tool link	Data
Forms	<input type="checkbox"/> The number of open forms and the rate at which they are opened and closed (per second). <input type="checkbox"/> The total number of forms and the rate at which they are opened and closed (per second). <input type="checkbox"/> The number of open forms and the rate at which they are opened and closed (per minute). <input type="checkbox"/> The total number of forms and the rate at which they are opened and closed (per minute).
Services Session Provider	<input type="checkbox"/> The total number of sessions created. <input type="checkbox"/> The number of current web client sessions and how many are in use. <input type="checkbox"/> Information about the garbage collection processes on the server.

Answer Area:

Answer Area

Performance Timer tool link	Data
Forms	<input checked="" type="checkbox"/> The number of open forms and the rate at which they are opened and closed (per second). <input type="checkbox"/> The total number of forms and the rate at which they are opened and closed (per second). <input type="checkbox"/> The number of open forms and the rate at which they are opened and closed (per minute). <input type="checkbox"/> The total number of forms and the rate at which they are opened and closed (per minute).
Services Session Provider	<input checked="" type="checkbox"/> The total number of sessions created. <input type="checkbox"/> The number of current web client sessions and how many are in use. <input type="checkbox"/> Information about the garbage collection processes on the server.

Section:

Explanation:

Box 1: The number of open forms and ..(per second) Forms - Forms will show how many forms are currently open, plus the rate at which they opened and closed (per second), and a set of counters, such as the total amount of created or closed forms.

Box 2: Services Session provider - This is the total number of sessions created.

Reference:

<https://docs.microsoft.com/en-us/dynamics365/fin-ops-core/dev-itpro/perf-test/performance-timer>

QUESTION 10

Contoso, Ltd. uses Dynamics 365 Finance. You receive reports of performance issues with the app.

You need to use Performance Timer to investigate the issues.
Which URL should you use?

- A. <https://contoso.cloudax.dynamics.com/?cmp=USMF&debug=perftimer>
- B. <https://contoso.cloudax.dynamics.com/?cmp=USMF&debug=develop>
- C. <https://contoso.cloudax.dynamics.com/?cmp=USMF&mi=performancetimer>
- D. <https://contoso.cloudax.dynamics.com/?cmp=USMF=debug=developer>

Correct Answer: D

Section:

Explanation:

To open the Performance timer, open your webpage with the added parameter debug=develop: <https://yoursite.cloud.test.dynamics.com/en/?cmp=USMF&debug=develop>
Reference: <https://docs.microsoft.com/en-us/dynamics365/fin-ops-core/dev-itpro/perf-test/performance-timer>

QUESTION 11

You are Dynamics 365 Finance developer.

You need to explain the performance advantages of the different concurrency models.

What are three performance advantages of optimistic concurrency control over pessimistic concurrency control? Each correct answer presents a complete solution.

NOTE: Each correct selection is worth one point.

- A. Records are locked as soon as they are retrieved from the database.
- B. Records remain available for other processes while they are selected from the database.
- C. Records are locked for a shorter length of time.
- D. Fewer resources are used to lock records during updates.
- E. One record cannot be selected for update by two different processes at the same time.



Correct Answer: B, C, D

Section:

Explanation:

Optimistic Concurrency only locks records from the time when the actual update is performed.

Following are the advantages of using OCC:

Records remain available for other processes to update if they have been selected from the database but haven't yet been updated.

Records are locked for a shorter length of time.

Fewer resources are used to hold the locks during the update process.

Incorrect Answers:

A: Pessimistic Concurrency Control locks records as soon as they are fetched from the database for an update.

E: One record can be selected for update by two different processes at the same time when using OCC.

Reference:

<https://docs.microsoft.com/en-us/dynamicsax-2012/developer/optimistic-concurrency-control>

01 - Case

Background Munson's Pickles and Preserves Farm produces and sells jarred food goods. The organization has several production and warehouse locations across the United States. Each location runs both production and warehousing operations. The company has three locations: East Central, and West.

The company is upgrading its Dynamics AX 2009 system to Dynamics 565 Finance.

Current environment Munson's Pickles and Preserves Farm plans to migrate customizations, data, and integration from its legacy system into Dynamics 365 finance and operations apps. The Dynamics 365 finance and operations environment includes:

- multiple cloud-hosted development environments using Microsoft Visual Studio 2017
- a Microsoft Azure DevOps project for source control
- two tier 2 environments for user acceptance testing and staging, as well as production. Munson's Pickles and Preserves Farm is currently in the planning and development phase of the upgrade process. The company's

internal development team needs additional development resources to address issues. The company already created a project that is set up to use a custom model named GPExtensions.

Integrations

Munson's Pickles and Preserves Farm has a new integration for its freight processing information.

The internal development team created the secure file transfer protocol (SFTP) site for the source information to be stored and the staging table to house the source information once the data is added to Dynamics 365 Finance, information from the source will be transferred once a day from the source system and integrated with the target system. More than 10,000 records will be transferred over the integration. The company created an aggregate entity for the integration to minimize the amount of transmitted data.

Munson's Pickles and Preserves Farm has added a new integration for freight processing where all item weights, dimensions, and other factors will be configured in the external portal while planning the loads. Once the load is planned, it will be integrated into Dynamics 365 Finance and operations apps for the freight invoice processing to occur.

No duplicate invoices or postings are associated with the freight invoice charges. The integration of this information from the source system is intended only for report creation and compilation purposes.

Planned changes Munson's Pickles and Preserves Farm wants to change inventory forms to fit its current needs. Any modifications or enhancements must follow the existing functionality for forms in Dynamics 365 Finance.

Requirements Munson's Pickles and Preserves Farm wants to change inventory forms to fit its current needs. Any modifications or enhancements must follow the existing functionality for forms in Dynamics 365 Finance.

Integrations All data from integrations have the same format as an existing Dynamics 365 Finance apps field. All enhancements or customizations must use existing assets before creating new functionality.

Munson's Pickles and Preserves Farm wants to change its integration strategy to include real-time data from the freight processing source system. The inventory must update as it is sold from the system. That information will be updated in

Dynamics 365 Finance.

The freight processing integration requires the use of an SFTP site to store XML files from the source system. The additional integration will use OData and must be transferred in real time.

A periodic batch job must

- Pull data from the SFTP site.

- Import the data to a staging table used to hold the information from the source system.

- Map source data to the target table in Dynamics 365 Finance.

The imported Load ID field must be added to the Sales Order header for all processed orders.

Additional requirements for integrations, including other integration strategies, may be necessary as the company grows. Existing tables must be changed to include the Load ID. The database will need to be synched before adding the Load ID field.

Changes Munson's Pickles and Preserves Farm must change the Inventory Status form to include more columns. It plans to create a table to enter the data for the Inventory Status form as a new data source. The company wants to add both the

Product Name field and Batch ID field to this new table.

The current form includes the item number, location, license plate, product inventory dimensions, and quantity.

The grid on the inventory Status form must include the product name by using the item number and legal entity. The user interface must be created to include the new columns and the data must be available to add to the grid. The form must have only an Action Pane, a Navigation List, a List Style Grid, a Details Header, and a Details Tab in the design and include the Load ID field.

Munson's Pickles and Preserves Farm is currently in the process of adding the other required fields:

one for Product Name and one for Batch ID- The new fields must be related to extended data types for the original fields on the existing data source for the Inventory Status form. Munson's Pickles and Preserves Farm plans to add the EcoResProductName and Batch ID data to the extended table for WHSTmpStatusChange. The fields on the table extension must be populated with data and visible on the inventory Status form on insert.

Issues

- The Internal development team has created the SFTP site connections, the staging table, and the batch Jobs for the new integration for freight processing. The development team needs to map the source data to the target table and the data management workspace. The development team notices errors with mapping target fields in the data management workspace. The team needs another developer to configure the table extensions, class extensions, and form extensions that are required for the planned changes.

- The internal development team has issues adding the required fields to the inventory Status standard form. The team needs another developer to configure the table extensions, class extensions, and form extensions that are required for the planned changes.

QUESTION 1

A company uses Dynamics 365 Finance. You have two tables as shown:

Table name	Comments
EmplTable	This table stores employee information.
EmplBankAccount	This custom table is used to store bank account information for employees. EmplBankAccount has a foreign key relation to EmplTable.

When an employee is deleted from EmplTable, the corresponding bank account information must automatically be deleted from EmplBankAccount.

You need to ensure that the requirement is met

Which two actions should you perform? Each correct answer presents part of the solution.

NOTE: Each correct selection is worth one point.

- A. Select the foreign key relation properties from EmplBankAccount.
- B. Set the value of the OnDelete property to Restricted.
- C. Set the value of the OnDelete property to Cascade.
- D. Select the foreign key relation properties from EmplTable.

Correct Answer: A, C

Section:

Explanation:

QUESTION 2

DRAG DROP

You are working on the data structures for the company's implementation.

You need to ensure that the data from the source system is mapped into the new staging table and can be used for synchronous and asynchronous integrations.

Which three actions should you perform in sequence? To answer, move the appropriate actions from the list of actions to the answer area and arrange them in the correct order.

Select and Place:

Correct Answer:

Section:

Explanation:

Create an aggregate data entity.

Enable the data entity for Public API and data management use.

Add the WHSTmpStatusChange table as...

QUESTION 3

DRAG DROP

You need to add new fields to the standard form and organize the grid to meet the requirements.

In which order should you perform the actions? To answer, move all actions from the list of actions to the answer area and arrange them in the correct order.

Select and Place:

Actions

- Create an extension of the form in the project.
- Drag the Product Name and Batch ID fields from the data source to the grid on the form extension.
- Find the WHSTmpStatusChangeDetails form in the Application Object Tree (AOT).
- Right-click the form in the Application Object Tree (AOT).

Answer area

-
-
-
-

Correct Answer:

Actions

Answer area

- Find the WHSTmpStatusChangeDetails form in the Application Object Tree (AOT).
- Right-click the form in the Application Object Tree (AOT).
- Create an extension of the form in the project.
- Drag the Product Name and Batch ID fields from the data source to the grid on the form extension.

Section:

Explanation:

QUESTION 4

You need to select an integration strategy to meet the new freight processing requirement. Which two integration strategies can you use? Each correct answer presents a complete solution. NOTE: Each correct selection is worth one point.

- A. custom web service
- B. batch data API EC.
- C. OData
- D. asynchronous integration

Correct Answer: A, C

Section:

QUESTION 5

You need to add new fields to the table for the Inventory Status form to represent the product name and batch ID.

What are two possible ways to achieve this goal? Each correct answer presents a complete solution.

NOTE Each correct selection is worth one point.

- A. Drag the EcoResProductName and inventBatchID extended data types (EDTs) from the Application Object Tree (AOT) to the table. Rename the fields appropriately,

- B. Right-click the newly created table and add two new base enumerations to the table. Rename the new enumerations Product Name and Batch ID respectively.
- C. Right-click the newly created table. Add two new string fields to the table. Rename one string field to Product Name and rename the other to Batch ID. Change the property of the fields to the appropriate EDTs.
- D. Right-click the newly created table in the designer Add a string field named Product Name to the table. Add an enumeration named Batch ID to the table.

Correct Answer: A, D

Section:

QUESTION 6

You need to test and map the freight processing integration.

Which data management concept is used for the XML file to import the freight processing data?

- A. data package
- B. data job
- C. data entity
- D. data project

Correct Answer: C

Section:

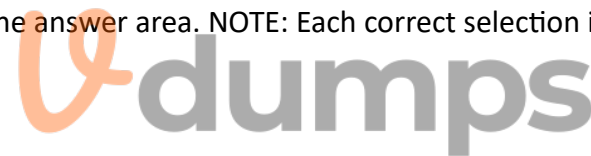
QUESTION 7

HOTSPOT

You need to create a chain of command method for inserting the data on the table for the new fields.

How should you complete the code? To answer, select the appropriate configuration in the answer area. NOTE: Each correct selection is worth one point.

Hot Area:



Answer Area

[ExtensionOf(TableStr(WHSTmpStatusChange))]
[ExtensionOf(ClassStr(WHSTmpStatusChange))]

class newWHSTmpStatusChange_Table_Extension

final
public

```
{  
    public void insert()  
    {  
        EcoResProduct ecoResProduct;  
        EcoResProductTranslation ecoResProductT;  
        InventSum inventSum;  
        select firstonly InventBatchId from inventSum  
        where inventSum.ItemId == this.ItemId && inventSum.LicensePlateId == this.LicensePlateId  
        && inventSum.InventBatchId != "" && inventSum.PhysicalInvent > 0;  
  
        select firstonly Name from ecoResProductT  
        where EcoResProductT.LanguageId == CompanyInfo::languageId()  
        join EcoResProduct  
        where EcoResProduct.RecId == EcoResProductT.Product  
        && EcoResProduct.displayproductnumber == this.ItemId;  
  
        this.newEcoResProductName = ecoResProductT.Name;
```

next insert();
next public void insert()
Insert();

this.newInventBatchId = InventSum.InventBatchId;

this.newInventBatchId = InventSum.InventBatchId;



Answer Area:



Answer Area

[ExtensionOf(TableStr(WHSTmpStatusChange))]
[ExtensionOf(ClassStr(WHSTmpStatusChange))]

class newWHSTmpStatusChange_Table_Extension

final

public

```
{  
    public void insert()  
    {  
        EcoResProduct ecoResProduct;  
        EcoResProductTranslation ecoResProductT;  
        InventSum inventSum;  
        select firstonly InventBatchId from inventSum  
        where inventSum.ItemId == this.ItemId && inventSum.LicensePlateId == this.LicensePlateId  
        && inventSum.InventBatchId != "" && inventSum.PhysicalInvent > 0;  
  
        select firstonly Name from ecoResProductT  
        where EcoResProductT.LanguageId == CompanyInfo::languageId()  
        join EcoResProduct  
        where EcoResProduct.RecId == EcoResProductT.Product  
        && EcoResProduct.displayproductnumber == this.ItemId;  
  
        this.newEcoResProductName = ecoResProductT.Name;
```

next insert();

next public void insert()

Insert();

this.newInventBatchId = InventSum.InventBatchId;

this.newInventBatchId = InventSum.InventBatchId;



Section:

Explanation:

<https://learn.microsoft.com/en-us/dynamics365/fin-ops-core/dev-itpro/extensibility/add-method-table>

QUESTION 8

DRAG DROP

You need to map the target data fields in the Data management workspace for the custom data entity.

Which three actions should you perform in sequence? To answer, move the appropriate actions from the list of actions to the answer area and arrange them in the correct order.

Select and Place:

Actions	Answer area
Refresh the entity list from the Data management workspace.	
Validate data management from the Data management workspace.	
Publish the entity.	
Generate the correct target field mapping.	
In the Data entities list, select Modify target mapping for the custom data entity.	
In the Data entities list, select Target fields for the custom data entity.	

Correct Answer:

Actions	Answer area
Refresh the entity list from the Data management workspace.	In the Data entities list, select Modify target mapping for the custom data entity.
Validate data management from the Data management workspace.	Publish the entity.
	Generate the correct target field mapping.
In the Data entities list, select Target fields for the custom data entity.	

Section:

Explanation:

QUESTION 9

DRAG DROP

You need to create an extension of the table and perform a build and synchronize the newly extended table.

Which three actions should you perform in sequence? to answer, move the appropriate actions from the list of actions to the answer area and arrange them in the correct order.

Select and Place:

Actions	Answer area
Open the WhsTmpStatusChange table from the application explorer.	
Right-click the project and build the project.	
Right-click the project, select Properties, set the Synchronize Database on Build property to True , and then select OK .	
Right-click the WhsTmpStatusChange table in the solution explorer and create an extension.	
Right-click WhsTmpStatusChange in the Application Object Tree (AOT) to create the extension and add it to the project.	

Correct Answer:

Actions	Answer area
Open the WhsTmpStatusChange table from the application explorer.	
Right-click the WhsTmpStatusChange table in the solution explorer and create an extension.	Right-click WhsTmpStatusChange in the Application Object Tree (AOT) to create the extension and add it to the project
	Right-click the project, select Properties, set the Synchronize Database on Build property to True , and then select OK .
	Right-click the project and build the project.

Section:

Explanation:



QUESTION 10

You need to add data to the WHSTmpStatusChange table by extending the insert method. What should you do?

- A. Right-click the WHSTmpStatusChange table in the Application Object Tree (AOT) and select View Code
- B. Right-click the project node in Solution Explorer and add a new Class object to the project.
- C. Right-click the WHSTmpStatusChange table in the Application Object Tree (AOT) and create an extension in the existing project
- D. Right-click the project node in Solution Explorer and add a new Table object to the project.

Correct Answer: C

Section:

QUESTION 11

DRAG DROP

You need to design the new data entity for the purchase order inquiries records.

Which values should you set on the data entity properties? To answer, move the appropriate values to the correct data entity properties. You may use each value once, more than once, or not at all- You may need to move the split bar between panes or scroll to view content

NOTE: Each correct selection is worth one point.

Select and Place:

Values

Yes

No

Set property values on the data entity

Data entity property

Data Management Enabled

Is Public

Value

Correct Answer:

Values

Set property values on the data entity

Data entity property

Data Management Enabled

Is Public

Value

Yes

No

Section:

Explanation:

QUESTION 12

DRAG DROP

You must merge the code change that you performed and which was tested by QA to the production environment.

You need to merge a specific changeset.

Which three actions should you perform in sequence? To answer, move the appropriate actions from the list of actions to the answer area and arrange them in the correct order.

Select and Place:

Actions

- Choose the all changes up to a specific version option.
- Perform a merge from the Release source branch.
- Merge the changes to the Dev target branch.
- Perform a merge from the Dev source branch.
- Choose the selected changesets option.
- Merge the changes to the Release target branch.

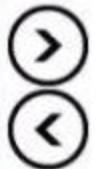


Steps to perform merge activity.

Correct Answer:

Actions

- Choose the all changes up to a specific version option.
- Perform a merge from the Release source branch.
- Merge the changes to the Dev target branch.
-
-
-



Steps to perform merge activity.

- Perform a merge from the Dev source branch.
- Choose the selected changesets option.
- Merge the changes to the Release target branch.



Section:

Explanation:

QUESTION 13

HOTSPOT

You need to create the new approval workflow for purchase orders.

What should you use? To answer, select the appropriate options in the answer area.

NOTE: Each correct selection is worth one point.

Hot Area:



Workflow component and Display menu item

Requirement	Solution
Module	<ul style="list-style-type: none"> Procurement and Sourcing Procurement and Sourcing Production control Accounts payable
Document menu item	<ul style="list-style-type: none"> PurchTableListPage PurchTableListPage SalesTableListPage

Answer Area:

Workflow component and Display menu item

Requirement	Solution
Module	<ul style="list-style-type: none"> Procurement and Sourcing Procurement and Sourcing Production control Accounts payable
Document menu item	<ul style="list-style-type: none"> PurchTableListPage PurchTableListPage SalesTableListPage

Section:

Explanation:

QUESTION 14

You need to resolve the issue for UserB.
Which framework should you use?

- A. SysExtension
- B. SysOperationSandBox
- C. SysOperation
- D. RunBaseBatch

Correct Answer: C

Section:

QUESTION 15

You need to set up the recurring data integration to pull data from the SFTP site into Dynamics 365 Finance Which API architecture type should you use?

- A. REST
- B. SOAP
- C. RPC
- D. JSON

Correct Answer: A

Section:

QUESTION 16

HOTSPOT

You need to design integrations for the freight processing source system

Which integration strategies should you implement? To answer, select the appropriate options In the answer area.

NOTE: Each correct selection is with one point.

Hot Area:

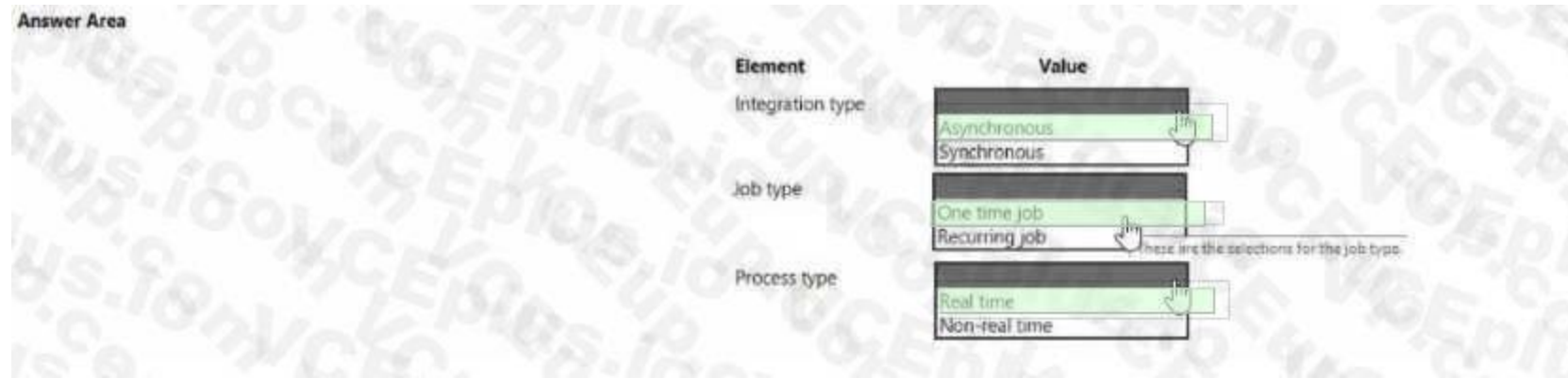
Answer Area

Element	Value
Integration type	<input type="checkbox"/> Asynchronous <input type="checkbox"/> Synchronous
Job type	<input type="checkbox"/> One time job <input type="checkbox"/> Recurring job
Process type	<input type="checkbox"/> Real time <input type="checkbox"/> Non-real time

These are the selections for the job type.

Answer Area:





Section:

Explanation:

QUESTION 17

You need to apply a pattern to the newly created form to satisfy the requirements. Which form pattern should you apply?

- A. Table of Contents
- B. Simple List and Details
- C. List Page
- D. Details Master

Correct Answer: B

Section:

Exam K



QUESTION 1

A company uses Dynamics 365 Finance. You are customizing elements for the extended data types (EDTs) shown in the following table.

EDT name	Comment
CalendarID	root EDT
CalendarName	root EDT
BasicCalendarID	derives from CalendarID

You have a table named WorkCalendar. The table has a column named BasicCalendarID that uses the BasicCalendarID EDT. You need to increase the length of the column by using an extension.

Solution: Create an extension for CalendarName.

Does the solution meet the goal?

- A. Yes
- B. No

Correct Answer: B

Section:

QUESTION 2

A company uses Dynamics 365 Finance.

You must add fields to a standard table in Visual Studio.

You need to create an extension of the table.

What should you do?

- A. Create a table extension from the base table.
- B. Create an extension class for the base table.
- C. Create a new table object in the project.
- D. Drag the table from the AOT to the project.

Correct Answer: A
Section:

QUESTION 3

DRAG DROP

You are developing new features for an app.

You must perform unit testing for the features by using the SysTest framework.

You need to create unit test code using appropriate test attributes.

Which test attribute should you use? To answer, drag the appropriate test attributes to the correct descriptions. Each test attribute may be used once, more than once, or not at all. You may need to drag the split bar between panes or scroll to view content.

NOTE: Each correct selection is worth one point.

Select and Place:

Test attributes

- SysTestMethodAttribute
- SysTestCheckInTestAttribute
- SysTestInactiveTestAttribute
- SysTestTargetAttribute

Correct Answer:

Test attributes

-
- SysTestCheckInTestAttribute
-
- SysTestTargetAttribute

Section:

Explanation:

QUESTION 4

HOTSPOT

You are designing a new layout for the Vendor Payment Advice report. You add fields to the table that the report uses.

Answer Area

Description	Test attribute
Unit testing code	
Indicates the class or method is deactivated	

Answer Area

Description	Test attribute
Unit testing code	SysTestMethodAttribute
Indicates the class or method is deactivated	SysTestInactiveTestAttribute

The design must include the new fields.
You need to ensure the standard Payment Advice report always uses the new design.
Which class should you use? To answer, select the appropriate options in the answer area.
NOTE: Each correct selection is worth one point.

Hot Area:

Answer Area

Requirement	Class
Populate data from new fields added to the report data source.	<ul style="list-style-type: none">Report data providerData contractReport controllerReport data providerReport UI builder
Ensure the standard Payment Advice report always uses the new design.	<ul style="list-style-type: none">Report UI builderReport data providerData contractReport UI builderReport controller

Answer Area:

Answer Area



Requirement	Class
Populate data from new fields added to the report data source.	<ul style="list-style-type: none">Report data providerData contractReport controllerReport data providerReport UI builder
Ensure the standard Payment Advice report always uses the new design.	<ul style="list-style-type: none">Report UI builderReport data providerData contractReport UI builderReport controller

Section:

Explanation:

QUESTION 5

HOTSPOT

You are using the Metadata search tool in Visual Studio.

You need to select the appropriate query string for various scenarios.

Which query string should you use? To answer, select the appropriate options in the answer area.

NOTE: Each correct selection is worth one point.

Hot Area:

Answer Area

Scenario

Query string

Find tables that have method names that contain the word **insert**.

- type:table.method name:insert
- type:tables,method name:insert
- type:table.method name:insert()
- type:tables.method name:insert()

Find forms where the form name includes the phrase **ccount**.

- type:forms like ccount
- type:form like ccount
- type:forms ccount
- type:form ccount

Answer Area:

Answer Area

Scenario

Find tables that have method names that contain the word **insert**.

Query string

```
type:table.method name:insert  
type:tables,method name:insert  
type:table.method name:insert()  
type:tables.method name:insert()
```

Find forms where the form name includes the phrase **ccount**.

```
type:forms like ccount  
type:form like ccount  
type:forms ccount  
type:form ccount
```

Section:

Explanation:



QUESTION 6

DRAG DROP

You are creating a new class and adding methods to the class.

You need to control extensibility capabilities of some of the methods in the class.

Which attribute should you use? To answer, drag the appropriate attributes to the correct requirements. Each attribute may be used once, more than once, or not at all. You may need to drag the split bar between panes or scroll to view content.

NOTE: Each correct selection is worth one point.

Select and Place:

Attributes	Requirement	Attribute
<input type="checkbox"/> [Hookable:true]	Extenders must be able to subscribe to pre- and post-event handlers.	<input type="text"/>
<input type="checkbox"/> [Wrappable:false]	Extenders must not be able to use chain of command (CoC) to wrap a specific method.	<input type="text"/>
<input type="checkbox"/> [Replaceable]	Extenders must be able to wrap the method but must not be required to call next in the chain of command (CoC).	<input type="text"/>
<input type="checkbox"/> [Hookable:false]		

Correct Answer:

Attributes	Requirement	Attribute
[Hookable(false)]	Extenders must be able to subscribe to pre- and post-event handlers.	[Hookable(true)]
	Extenders must not be able to use chain of command (CoC) to wrap a specific method.	[Wrappable(false)]
	Extenders must be able to wrap the method but must not be required to call next in the chain of command (CoC).	[Replaceable]

Section:

Explanation:

Attributes

[Hookable(true)] [Wrappable(false)] [Replaceable]

[Hookable(false)]

Answer Area

Requirement	Attribute
Extenders must be able to subscribe to pre- and post-event handlers.	[Hookable(true)]
Extenders must not be able to use chain of command (CoC) to wrap a specific method.	[Wrappable(false)]
Extenders must be able to wrap the method but must not be required to call next in the chain of command (CoC).	[Replaceable]

QUESTION 7

DRAG DROP

A company uses Dynamics 365 Supply Chain Management.

You are developing multiple integrations.

You need to select the appropriate integration models for the integrations.

Which integration model should you select? To answer, drag the appropriate data integration models to the correct requirements. Each data integration model may be used once, more than once, or not at all. You may need to drag the split bar between panes or scroll to view content.

NOTE: Each correct selection is worth one point.

Select and Place:

Data integration models

Custom service	Azure Data Lake integration
Dual-write	OData

Answer Area

Requirement	Data integration model
Users must be able to view changes in near real time in Dynamics 365 when they create or make changes to a product in an external system.	
Update and synchronize customer information in Dynamics 365 Supply Chain Management that is created or updated in Dynamics 365 Sales.	
Share information about the on-hand quantity of products in near real time with an external web-based e-commerce application that supports the SOAP protocol.	

Correct Answer:

Data integration models

Custom service	Azure Data Lake integration
Dual-write	OData

Answer Area

Requirement	Data integration model
Users must be able to view changes in near real time in Dynamics 365 when they create or make changes to a product in an external system.	OData
Update and synchronize customer information in Dynamics 365 Supply Chain Management that is created or updated in Dynamics 365 Sales.	Custom service
Share information about the on-hand quantity of products in near real time with an external web-based e-commerce application that supports the SOAP protocol.	OData

Section:

Explanation:

Data integration models	Answer Area												
<table border="1"> <tr> <td>Custom service</td> <td>Azure Data Lake integration</td> </tr> <tr> <td>Dual-write</td> <td>OData</td> </tr> </table>	Custom service	Azure Data Lake integration	Dual-write	OData	<table border="1"> <thead> <tr> <th>Requirement</th> <th>Data integration model</th> </tr> </thead> <tbody> <tr> <td>Users must be able to view changes in near real time in Dynamics 365 when they create or make changes to a product in an external system.</td> <td>OData</td> </tr> <tr> <td>Update and synchronize customer information in Dynamics 365 Supply Chain Management that is created or updated in Dynamics 365 Sales.</td> <td>Custom service</td> </tr> <tr> <td>Share information about the on-hand quantity of products in near real time with an external web-based e-commerce application that supports the SOAP protocol.</td> <td>OData</td> </tr> </tbody> </table>	Requirement	Data integration model	Users must be able to view changes in near real time in Dynamics 365 when they create or make changes to a product in an external system.	OData	Update and synchronize customer information in Dynamics 365 Supply Chain Management that is created or updated in Dynamics 365 Sales.	Custom service	Share information about the on-hand quantity of products in near real time with an external web-based e-commerce application that supports the SOAP protocol.	OData
Custom service	Azure Data Lake integration												
Dual-write	OData												
Requirement	Data integration model												
Users must be able to view changes in near real time in Dynamics 365 when they create or make changes to a product in an external system.	OData												
Update and synchronize customer information in Dynamics 365 Supply Chain Management that is created or updated in Dynamics 365 Sales.	Custom service												
Share information about the on-hand quantity of products in near real time with an external web-based e-commerce application that supports the SOAP protocol.	OData												

QUESTION 8

DRAG DROP

A company uses Dynamics 365 Finance.

You create the following tables.

Table	Requirement
TableA	Delete related data from other tables when data is deleted from TableA.
TableB	Prevent deletion of data from TableB if related data exists in another table.
TableC	Delete data if specific conditions are met.

You need to configure the system to meet the requirements.

Which delete actions should you use? To answer, drag the appropriate delete action types to the correct scenarios. Each delete action may be used once, more than once, or not at all. You may need to drag the split bar between panes or scroll to view content.

NOTE: Each correct selection is worth one point.

Select and Place:

Table	Delete action
TableA	
TableB	
TableC	

Correct Answer:

Table	Delete action
TableA	Cascade
TableB	Restricted
TableC	Cascade+Restricted

Section:

Explanation:

QUESTION 9

You develop apps for Dynamics 365 Supply Chain Management.

You need to track changes only for sales header information by using data entities.

Which change tracking option should you use?

- A. Enable primary table
- B. Disable change tracking
- C. Enable entire entity
- D. Enable custom query

Correct Answer: D

Section:

QUESTION 10

Note: This question is part of a series of questions that present the same scenario. Each question in the series contains a unique solution that might meet the stated goals. Some question sets might have more than one

correct solution, while others might not have a correct solution.

After you answer a question in this section, you will NOT be able to return to it. As a result, these questions will not appear in the review screen.

You must extend the class SalesLineType and add a new method that returns the day of week for the system's current date as an integer value.

You need to create a class that extends SalesLineType and adds the new method.

Solution: You create the following code:

```
[ExtensionOf(classStr(SalesLineType))]  
final class mySalesLineType_myExtension  
{  
    public int extensionMethodDayofWeek()  
    {  
        return dayofwk(systemDateGet());  
    }  
}
```

Does the solution meet the goal?

Select and Place:

Actions
Add a Runnable class to the project.
Open Visual Studio as a non-administrator.
Add an extension to the project.
Open Visual Studio as an administrator.
Create a new project.
Add a new class to the project.
Extend the SysTestCase class in the class declaration.
Add methods to the class and decorate the methods with the [SysTestMethod] attribute.

Answer area

- 1
- 2
- 3
- 4
- 5



Correct Answer:

Actions
Add a Runnable class to the project.
Open Visual Studio as a non-administrator.
Add an extension to the project.

Answer area

- 1 Open Visual Studio as an administrator.
- 2 Create a new project.
- 3 Add a new class to the project.
- 4 Extend the SysTestCase class in the class declaration.
- 5 Add methods to the class and decorate the methods with the [SysTestMethod] attribute.

Section:

Explanation:

Open Visual Studio as an administrator.
Create a new project.
Add a new class to project.
Extend the SysTestCase class in the class declaration.
Add methods to the class decorate the methods with the [SystestMethod] attribute

QUESTION 11

A developer submits code for a quality assurance review. Several lines of code use the var data type. You need to validate the segments for the correct X++structure. Which code statement will pass validation?

- A. var var1 = systemDateGet (); var1 = var1 ? today(); "No today";
- B. var var1 = true ? 10:"10"
- C. var var1 = true; var1 = true ? 10:falase;
- D. var var1 = (var1 >= false) ? true :10;

Correct Answer: A

Section:

QUESTION 12

You have a table in which multiple properties must be changed. Multiple table properties are locked down at the base table and must not be overwritten. You need to modify the table properties by extending the table. Which table property can you populate in a table extension by using the property sheet?

- A. Created by
- B. Table group
- C. Configuration key
- D. Cache lookup

Correct Answer: A

Section:

QUESTION 13

You are a Dynamics 365 Finance developer. You have the following Extended Data Types (EDTs):

Name	Comments
AccountBase	Root EDT
Accountid	Derives from AccountBase

You plan to modify the properties of the EDTs by using an extension. You need to determine which operations can be performed. Which operation is possible?

- A. Create art extension for Accountid and decrease the field size.
- B. Create an extension for AccountBase and modify the Form Help property.
- C. Create a derived EDT for Accountid and increase the field size.
- D. Create a derived EOT for AccountBase and increase the field size.

Correct Answer: B

Section:

QUESTION 14

DRAG DROP



A company uses Dynamics 365 Finance.

You must create two data entities:

- The first entity must allow access to customer groups by using OData.
- The second entity must be able to bulk export customer data by using a batch process.

You need to enable the properties for each entity you create.

Which properties should you enable? To answer, drag the appropriate properties to the correct requirements. Each property may be used once, more than once, or not at all. You may need to drag the split bar between panes or scroll to view content.

NOTE: Each correct selection is worth one point.

Select and Place:

Properties	Requirement	Property
Public API	Customer groups entity	
Data management capabilities	Customer data entity	
Is Read Only		
Set-based SQL operations		

Correct Answer:

Properties	Requirement	Property
	Customer groups entity	Public API
Data management capabilities	Customer data entity	Set-based SQL operations
Is Read Only		

Section:

Explanation:

QUESTION 15

A company uses Dynamics 365 Finance.

Two processes attempt to update the same customer record at the same time. One of the updates fails.

You need to resolve the issue by overriding the table concurrency model.

Which Select statement should you use?

- A. `select firstonly optimisticlock custTable where custTable.AccountNum -- '@eoeei'j`
- B. `select firstonly forupdate CustTable where CustTable.AccountNum '000001*';`
- C. `select firstonly pessimisticlock custTable where CustTable. AccountNum -- '000001*';`
- D. `select firstonly firstFest custTable where custTable.AccountNum -- '000001';`

Correct Answer: C

Section:

QUESTION 16

HOTSPOT

You develop a customization for Dynamics 365 Supply Chain Management.

You need to optimize performance for this customization.

Which concurrency control options should you implement? To answer, select the appropriate options in the answer area.

NOTE: Each correct selection is worth one point.

Hot Area:

Lock records as soon as they are retrieved from a data source	<input type="checkbox"/>
	Optimistic
	Pessimistic
Minimize the resources that are used to lock records during updates	<input type="checkbox"/>
	Optimistic
	Pessimistic

Answer Area:

Lock records as soon as they are retrieved from a data source	<input type="checkbox"/>
	Optimistic
	Pessimistic
Minimize the resources that are used to lock records during updates	<input checked="" type="checkbox"/>
	Optimistic
	Pessimistic

Section:

Explanation:

QUESTION 17

You must extend CarType and add a new element named MUV to CarType.

You need to develop a solution that meets the requirements.

Solution: Set the is Extensible property to false for the CarType enumeration. Create a new enumeration to add the MUV element.

Does the solution meet the goal?

A. Yes

B. No

Correct Answer: B

Section:

QUESTION 18

Users report that a company's Dynamics 365 Finance website is slow. You suspect that a SQL query attached to the task GetFormInteractionTask is the cause. You need to determine how long it takes for the query to run and return results. What should you use?

- A. Fiddler
- B. Performance monitor
- C. Microsoft Edge debugging tools
- D. Performance timer

Correct Answer: D

Section:

QUESTION 19

A company uses Dynamics 365 Supply Chain Management.

You need to list all classes in the Application Suite model that contain a cross-company query.

Which query string should you use?

- A. type:class, method name=insert code:'crosscompany' model:'Application Suite'
- B. type:class code:'crosscompany' model:'Application Suite'
- C. type:class, method name=run code:'crosscompany' model:'Application Suite'
- D. type:class, table code:'crosscompany' model:'Application Suite'

Correct Answer: C

Section:

QUESTION 20

You are working with extended data types in Visual Studio.

You need to create an extension of a base Extended Data Types (EDT) that is part of another model. Which three properties can be modified? Each correct answer presents a complete solution. NOTE: Each correct selection is worth one point.

- A. Alignment
- B. IsExtensible
- C. Form help
- D. String size
- E. Label

Correct Answer: C, D, E

Section:

QUESTION 21

A company is implementing Dynamics 365 finance and operations apps.

The company must test its native Dynamics 365 finance and operations apps by using multiple values.

You need to create a test case within a development environment.

Which attribute should the test case use?

- A. SysTestRowInactive
- B. SysTestCategory



C. SysTestRow

Correct Answer: C

Section:

QUESTION 22

You are a Dynamics 365 Finance developer.

Users report that a sales table details form takes a long time to load and display data. You need to optimize the performance by implementing caching.

Which two actions should you perform? Each correct answer presents a complete solution.

NOTE: Each correct selection is worth one point.

- A. Associate all display and edit methods with the form data source instead of the table.
- B. Call the FormDataSource.research method.
- C. Call the FormDataSource.cacheAddMethod method.
- D. Create display and edit methods on the table instead of the form data source.

Correct Answer: A, C

Section:

QUESTION 23

DRAG DROP

A company uses Dynamics 365 finance and operations apps. The company uses Power BI Desktop to fetch a list of customers.

You need to create a Power BI report to view the list. You authenticate a Power BI Desktop instance by using a Dynamics 365 finance and operations app.

Which four actions should you perform next in sequence? To answer, move the appropriate actions from the list of actions to the answer area and arrange them in the correct order.

Select and Place:

Actions

- ⋮ Enter the name of the Customers data entity.
- ⋮ Create a Power BI report by using the customer data.
- ⋮ Select Get data from Power BI.
- ⋮ Select OData feed.
- ⋮ Enter the URL of the Customers OData endpoint.
- ⋮ Enter credentials to connect a database.

Answer area



Correct Answer:

Actions

- Enter the name of the Customers data entity.
- Create a Power BI report by using the customer data.
-
-
-

Answer area

- Select Get data from Power BI.
- Select OData feed.
- Enter the URL of the Customers OData endpoint.
- Enter credentials to connect a database.

Section:

Explanation:

QUESTION 24

DRAG DROP

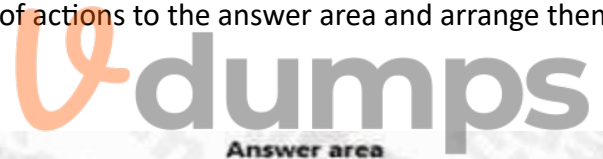
A company uses Dynamics 365 Finance.

You must use QueryBuilder classes to implement a query that loops through all customers for whom the customer group equals EXT. You need to implement the query. You declare and initialize a query Object.

You need to run the query.

in which order should you perform the actions? To answer, move all actions from the list of actions to the answer area and arrange them in the correct order.

Select and Place:



Actions

- Declare a QueryBuildRange object and add a range for the CustGroup field on the QueryBuildDataSource.
- Loop through the QueryRun object by using the Next method.
- Declare and initialize the QueryRun object by using the query object.
- Declare a QueryBuildDataSource object. Call the addDataSource method on the query object and assign it to the QueryBuildDataSource by using CustTable.
- Add a value to range for the CustGroup EXT to the QueryBuildRange object.



Answer area

- 1
- 2
- 3
- 4

Correct Answer:

Actions

- Declare a QueryBuildRange object and add a range for the CustGroup field on the QueryBuildDataSource.
-
-
-



Answer area

- 1 Declare a QueryBuildDataSource object. Call the addDataSource method on the query object and assign it to the QueryBuildDataSource by using CustTable.
- 2 Add a value to range for the CustGroup EXT to the QueryBuildRange object.
- 3 Loop through the QueryRun object by using the Next method.
- 4 Declare and initialize the QueryRun object by using the query object.

Section:

Explanation:

Declare a QueryBuildDataSource object...
Add a value to range for the CustGroup EXT to the QueryBuildRange object.
Loop through the QueryRun object by using the Next method.
Declare and initialize the QueryRun object by using the query object.

QUESTION 25

A company uses Dynamics 365 Finance.
You implement an extension of a method named calc in Class

A. The calc method:

- Accepts an integer as an input parameter.
- Returns an integer as an output parameter.

You must implement an extension to:

- Extend the calc method.
- Prevent the standard code from running if the value of the input parameter is greater than 10-
You need to implement the correct solution. Which code segment should you use?

B.

```
public int calc(int _value)
{
    if (_value > 10)
    {
        throw error('The value cannot be greater than 10.');
```

C.

```
public int calc(int _value)
{
    if (_value > 10)
    {
        throw error('The value cannot be greater than 10.');
```

D.

```
public int calc(int _value)
{
    int ret = next calc(_value);
    if (_value > 10)
    {
        throw error('The value cannot be greater than 10.');
```

E.

```
public int calc(int _value)
{
    int ret;
    if (_value <= 10)
    {
        ret = next calc(_value);
    }
    return ret;
}
```

Correct Answer: C

Section:



QUESTION 26

A company uses Dynamics 365 Finance.

You have an entity named Vend Vend or V2 Entity. You add a new column to the entity. You need to ensure that the new column is available in the entity (or data transfer activity). Which two actions should you perform? Each correct answer presents part of the solution. NOTE; Each correct selection is worth one point.

- A. Select the Modify target mapping button on the Entity list page.
- B. Select the Generate mapping button on the Mapping details form.
- C. Select the Entity structure button on the Entity page.
- D. Select the Validate button on the Entity list page.

Correct Answer: B, D

Section:

QUESTION 27

HOTSPOT

You are a Dynamics 365 Finance developer.

You have the following source control branches:

Branch	Associated environment
Dev	Development
Main	Test

You need to move the list of changesets from the development environment to the test environment.

What should you do? To answer, select the appropriate options in the answer area.

NOTE: Each correct selection is worth one point.

Hot Area:

Answer Area

Action	Branch
Select a starting branch for the merge operation.	Dev
Select the source branch.	Dev
Select the destination branch.	Main

Answer Area:

Answer Area

Action	Branch
Select a starting branch for the merge operation.	Dev
Select the source branch.	Dev
Select the destination branch.	Main

Section:

Explanation:

QUESTION 28

HOTSPOT

A company wants to Integrate Dynamics 365 Finance with third-party applications.

You need to select integration patterns for various scenarios.

Which integration patterns should you use? To answer, select the appropriate options in the answer area.

NOTE: Each correct selection is worth one point.

Hot Area:

Answer Area

Scenario	Data integration API
A customer calls customer support and asks to change their address information in real time.	OData service endpoints
A company receives a large volume of purchase orders from a front-end system that runs on-premises. The orders must periodically be sent to Dynamics 365 Finance for processing and management.	Batch data API
A company defines and configures products by using a third-party application that is hosted on-premises. This company wants to move the information from the on-premises application to Dynamics 365 Finance in real time.	Custom web service

Answer Area:

Scenario	Data integration API
A customer calls customer support and asks to change their address information in real time.	<input type="text" value="OData service endpoints"/> <input type="text" value="Batch data API"/> <input type="text" value="Custom web service"/> <input checked="" type="text" value="OData service endpoints"/>
A company receives a large volume of purchase orders from a front-end system that runs on-premises. The orders must periodically be sent to Dynamics 365 Finance for processing and management.	<input type="text" value="Batch data API"/> <input checked="" type="text" value="Batch data API"/> <input type="text" value="Custom web service"/> <input type="text" value="OData service endpoints"/>
A company defines and configures products by using a third-party application that is hosted on-premises. This company wants to move the information from the on-premises application to Dynamics 365 Finance in real time.	<input type="text" value="Custom web service"/> <input type="text" value="Batch data API"/> <input checked="" type="text" value="Custom web service"/> <input type="text" value="OData service endpoints"/>

Section:

Explanation:

QUESTION 29

HOTSPOT

You are a Dynamics 365 Finance developer. You have The following code:

```

01 class TestQuestion
02 {
03     public static void main(Args _args)
04     {
05         TestQuestion testQuestion = new testQuestion();
06         testQuestion.run();
07     }
08     public void run()
09     {
10         TmpFrmVirtual tmpFrmVirtual;
11         str salesId;
12         int salesQty;
13         tmpFrmVirtual.Id = "SID1234";
14         salesQty = 5;
15         this.updateValues(tmpFrmVirtual, int2Str(salesQty));
16         info(tmpFrmVirtual.Id);
17         info(salesQty);
18     }
19     public void updateValues(TmpFrmVirtual _tmpFrmVirtual, str _salesQty)
20     {
21         TmpFrmVirtual tmpFrmVirtual = _tmpFrmVirtual;
22         int salesQty = _str2int(salesQty);
23         tmpFrmVirtual.Id = "SID1234-Updated";
24         salesQty = 10;

```



Which values does the info() method return? To answer, select the appropriate option in the answer area.

NOTE: Each correct selection is worth one point.

Hot Area:

Answer Area

Parameter	Value
tmpFrmVirtual.Id	SID1234
salesQty	5

Answer Area:

Answer Area

Parameter	Value
tmpFrmVirtual.Id	SID1234
salesQty	5

Section:

Explanation:



QUESTION 30

HOTSPOT

You are implementing record-level security by using Extensible Data Security (XDS) in Dynamics 365 Finance.

Users must be permitted to view sales orders only from customers they manage.

You need to configure the CustGroup form.

Which options should you use? To answer, select the appropriate options in the answer area.

NOTE: Each correct selection is worth one point.

Hot Area:

Answer Area

Requirement	Option
Restrict CustGroup to a value of 12.	Simple query Composite query Simple query View
Evaluate whether a policy should be applied.	Context string Constraint table Context string Primary table
Set a policy to secure a primary table.	Constraint table Constraint table Context string Primary table
Set a policy for a specific user role.	RoleName RoleName RoleProperty

Answer Area:

Answer Area

Requirement	Option
Restrict CustGroup to a value of 12.	Simple query Composite query Simple query View
Evaluate whether a policy should be applied.	Context string Constraint table Context string Primary table
Set a policy to secure a primary table.	Constraint table Constraint table Context string Primary table
Set a policy for a specific user role.	RoleName RoleName RoleProperty

Section:

Explanation:

QUESTION 31

You are adding a new field to the SalesTable form.

You must use an extension to add a status field onto the form.

You need to create the extension in the Application Object Tree (AOT) and add the extension to the demo Extensions model.

Solution: Navigate to the user interface forms node for the SalesTable form and modify the form.

Does the solution meet the goal?

A. Yes

B. No

Correct Answer: B

Section:

QUESTION 32

You need to design a form to display the check data.

Which two form patterns can you use? Each correct answer presents a complete solution.

NOTE: Each correct selection is worth one point.

- A. Details master
- B. Simple List
- C. Simple List and Details
- D. List page

Correct Answer: A, C

Section:

QUESTION 33

DRAG DROP

A company implements Dynamics 365 Supply Chain Management.

You need to create a report that shows all customer project invoices.

Which attribute should you use? To answer, drag the appropriate attributes to the correct requirements. Each attribute may be used once, more than once, or not at all. You may need to drag the split bar between panes or scroll to view content

NOTE: Each correct selection is worth one point.

Select and Place:

Attributes

- DataContractAttribute
- DataMemberAttribute
- SRSReportParameterAttribute
- SysOperationControlVisibilityAttribute

Answer Area



- Identify the contract name in the data provider class.
- Enable parameters in the report dialog.
- Provide parameters for the report.

Attribute

Correct Answer:

Attributes

SysOperationControlVisibilityAttribute

Answer Area

Requirement

- Identify the contract name in the data provider class.
- Enable parameters in the report dialog.
- Provide parameters for the report.

Attribute

DataContractAttribute
SRSReportParameterAttribute
DataMemberAttribute

Section:

Explanation:

QUESTION 34

A company requires Dynamics 365 finance and operations apps to notify third-party applications when data from purchase orders is available for consumption. You need to configure the trigger to capture the purchase order data. Which mechanism should you use?

- A. Batch framework
- B. SysTest framework
- C. Business event
- D. Data management framework

Correct Answer: A

Section:

QUESTION 35

DRAG DROP

A company uses Dynamics 365 Commerce for sales and distribution operations.

The following reporting changes are required based on feedback from user acceptance testing:

- * Add a field to a business document template.
- * Adjust the location of the customer address on an SSRS report.

You need to implement the changes.

Which development tools should you use? To answer, drag the appropriate development tools to the correct requirements. Each development tool may be used once, more than once, or not at all. You may need to drag the split bar between panes or scroll to view content.

NOTE: Each correct selection is worth one point.

Select and Place:

Development tools

☰ Power BI
☰ Visual Studio
☰ Microsoft 365

Answer Area

Requirement

- Add a new field.
- Adjust the customer address location.

Development tool



Correct Answer:

Development tools

Power BI

Requirement

Add a new field.

Adjust the customer address location.

Development tool

Microsoft 365

Visual Studio

Section:

Explanation:

QUESTION 36

You need to design the processAttachment method for the MigrateAttachment class. Which attribute should you use?

- A. [Replaceable(false)]
- B. [Replaceable(true)]
- C. [Wrappable(true)]
- D. (Hookable(false)]

Correct Answer: B

Section:

QUESTION 37

DRAG DROP

You need to design the workspace for the sales manager.

Which object types should you use? To answer, move the appropriate object types to the correct key performance indicators. You may use each object type once, more than once, or not at all. You may need to move the split bar between panes or scroll to view content.

NOTE: Each correct select is worth one point.

Select and Place:



Object types

Aggregate measurement

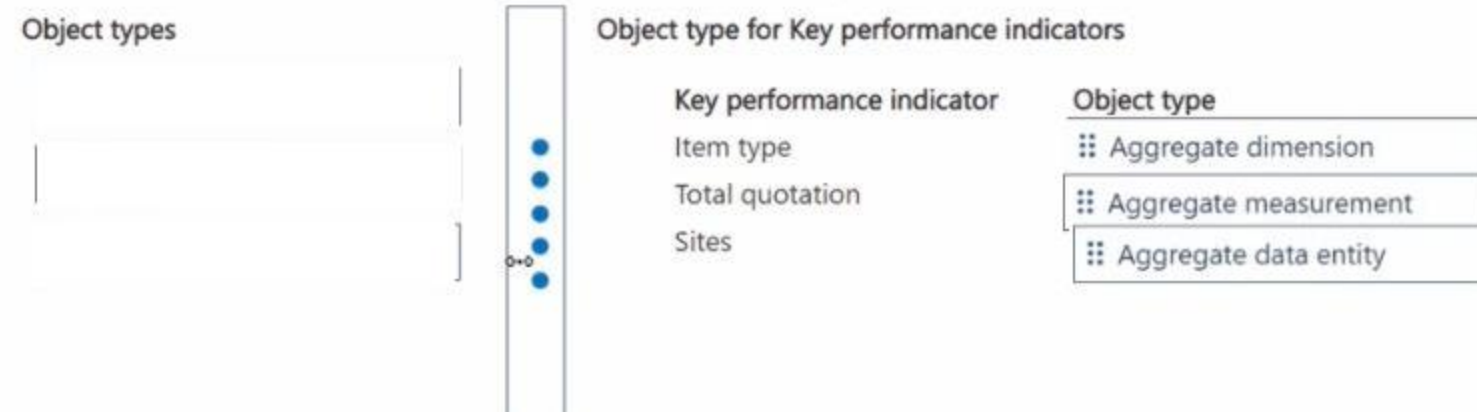
Aggregate dimension

Aggregate data entity

Object type for Key performance indicators

Key performance indicator	Object type
Item type	
Total quotation	
Sites	

Correct Answer:



Section:

Explanation:

QUESTION 38

A company uses Dynamics 365 finance and operations apps.

The company must implement efficient business events to allow an external system to subscribe to events coming from Dynamics 365 finance and operations apps.

You need to ensure the business events are efficient.

Which two methods should you use for the configuration? Each correct answer presents a complete solution

NOTE: Each correct selection is worth one point

- A. Bundle size
- B. Endpoints allowed per event
- C. HTTP time-out
- D. Retry count

Correct Answer: A, D

Section:

