

Microsoft.MS-721.vSep-2024.by.Anio.128q

Number: MS-721
Passing Score: 800
Time Limit: 120
File Version: 22.0

Exam Code: MS-721

Exam Name: Collaboration Communications Systems Engineer



Case 01

This is a case study. Case studies are not timed separately. You can use as much exam time as you would like to complete each case. However, there may be additional case studies and sections on this exam. You must manage your time to ensure that you are able to complete all questions included on this exam in the time provided.

To answer the questions included in a case study, you will need to reference into information that is provided in the case study. Case studies might contain exhibits and other resources that provide more information about the scenario that is described in the case study. Each question is independent of the other questions in this case study.

At the end of this case study, a review screen will appear. This screen allows you to review your answers and to make changes before you move to the next section of the exam. After you begin a new section, you cannot return to this section. To start the case study To display the first question in this case study, click the Next button. Use the buttons in the left pane to explore the content of the case study before you answer the questions. Clicking these buttons displays information such as business requirements, existing environment, and problem statements.

If the case study has an All Information tab, note that the information displayed is identical to the information displayed on the subsequent tabs. When you are ready to answer a question, click the Question button to return to the question.

Overview

Litware, Inc. is an online retailer.

Litware is replacing its telephony platform with Microsoft Teams Phone.

Currently, all users are assigned Microsoft 365 E3 licenses.

Telephony Environment

The existing telecommunications system has several third-party IP-PBXes at the corporate and warehouse sites. Currently, the PBXes are linked through the corporate WAN and an inter-office dial plan is in place.

A unique PSTN direct inward dial (DID) is assigned to each user. The last five digits of each DID are used as an extension.

Litware piloted Microsoft Skype for Business Server Enterprise Voice, but has since decided to migrate directly to Teams Phone. During the pilot, a response group was created, and the response group is still in use. Agents in the response group use Skype for Business Server-certified handsets.

Locations

Litware has global retail stores and datacenters

The telephony topology contains the following four types of sites:

Corporate sites

The corporate sites contain information workers who collaborate by using the Teams desktop client and SharePoint Online.

The reception desk at each corporate site has an analog intercom with an integrated door control. Each intercom connects to an existing PBX by using an FXS Analog Telephony Adapter (ATA).

SIP trunks are delivered directly to the site by using a resilient WAN that connects directly to the onsite PBX solution.

Warehouse sites

The warehouse sites are critical to the business. Users at these sites use either the Teams desktop client or the Teams mobile client.

Each warehouse has a public announcement (PA) system that connects to the PBX by using a SIP ATA along with the sites' existing ISDN trunks.

Currently, users at the company's warehouse in Georgia can call the PA system by dialing 123456.

All calls to emergency services from the warehouses are played over the warehouses' PA system automatically.

WAN connectivity at the warehouses can be unreliable, so local PSTN connectivity is preferred as compared to centrally hosted connectivity.

Retail sites

Each retail site has only one or two desk phones and a specialized point of sale (POS) computer that cannot run the desktop or web versions of the Teams client. Users at the retail sites have the Teams app and an associated data plan installed on their mobile device. Currently, each retail site uses a managed SD-WAN appliance to connect to both the internet and the corporate WAN. The users report that in the event of an internet outage at the retail sites, they can use their mobile devices, which have strong reception.

Planned Changes

Litware plans to implement the following changes:

- Maintain the existing emergency call PA integration.
- Replace the existing IP-PBX solutions by using Teams Phone.
- Consolidate all its PSTN trunks by using region-specific datacenters, wherever possible.

During the planned deployment of Teams Phone, Litware will open a new retail site in the United Kingdom that will have five users. Litware does not have any existing telephony in the United Kingdom. Management at the new retail site wants to use Microsoft Teams Calling Plans for the users.

You are opening a new warehouse site in Melbourne. The new warehouse will connect to a phone carrier by using a Session Border Controller (SBC). Dialing rules are an area code of two digits beginning with a zero followed by a subscriber number of eight digits. For example, an E.164 number of +61370105550 will be translated to 03 7010 5550, and +61255505550 will be translated to 02 5550 5550.

Technical Requirements

Litware identifies the following technical requirements:

- Minimize the amount of voice traffic over the WAN.
- Whenever possible, use natively supported Teams solutions.
- Avoid replacing existing analog device adapters and SIP phones.
- Assign a Microsoft 365 Phone System license to all the users listed in a CSV file.
- Ensure that the retail sites can place and receive calls in the event of a WAN failure.

- Assign a phone number of +61370105550 to a user named User1. User1 is located at a corporate site.
- Ensure that the warehouse sites maintain calling in the event of an internet outage or Teams service failure.
- Provide users at the United Kingdom retail site with phone numbers. The users must only be allowed to make in-country calls.
- Replace the response group from the Skype for Business Server Voice Enterprise pilot with a callqueue. The agents must be able to use their existing handset.

QUESTION 1

DRAG DROP

You are replacing the on-site PBX at the Georgia warehouse with Teams.

You need to maintain the functionality of the PBX after migrating to Teams.

Which sequence of steps should you perform? To answer, drag the appropriate steps to the correct locations. Each step may be used once, more than once, or not at all. You may need to drag the split bar between panes or scroll to view content.

NOTE: Each correct selection is worth one point.

Select and Place:

Steps

Answer Area

- Assign the emergency calling policy to the resource account.
- Assign the emergency calling policy to the Georgia warehouse.
- Associate the PA system with an SBC and assign the PA system an extension of 123456.
- Create an emergency calling policy that has Numbers to dial for emergency calls notifications set to 123456.

Step 1: Configure Direct Routing to the onsite SBC.

Step 2:

Step 3: Create a voice route for 123456 to the SBC.

Step 4:

Step 5:

Correct Answer:

Steps

Answer Area

Assign the emergency calling policy to the resource account.	Step 1: Configure Direct Routing to the onsite SBC.
	Step 2: Associate the PA system with an SBC and assign the PA system an extension of 123456.
	Step 3: Create a voice route for 123456 to the SBC.
	Step 4: Create an emergency calling policy that has Numbers to dial for emergency calls notifications set to 123456.
	Step 5: Assign the emergency calling policy to the Georgia warehouse.

Section:

Explanation:

Reference:

<https://docs.microsoft.com/en-us/microsoftteams/manage-emergency-calling-policies>



QUESTION 2

You need to recommend a solution for the new United Kingdom retail site. The solution must meet the technical requirements. Which three actions should you include in the recommendation? Each correct answer presents part of the solution. NOTE Each correct selection is worth one point.

- A. From the Microsoft Teams admin center, assign a voice routing policy to the users.
- B. From the Microsoft 365 admin center, modify the office phone numbers of the users.
- C. From the Microsoft Teams admin center, modify the dial-out settings of the users.
- D. From the Microsoft Teams admin center, assign the phone numbers to the users.
- E. From the Microsoft Teams admin center, order five user numbers.
- F. From the Microsoft 365 admin center, create a support ticket to request five phone numbers.
- G. From the Microsoft Teams admin center, assign a calling policy to the users.

Correct Answer: A, C, E

Section:

Explanation:

Reference:

<https://docs.microsoft.com/en-us/microsoftteams/getting-phone-numbers-for-your-users>

QUESTION 3

You are configuring the new call queue to replace the response group.

Which setting should you disable to ensure that the agents can receive calls from the call queue?

- A. Music on hold

- B. Attendant routing
- C. Conference mode
- D. Round robin

Correct Answer: C

Section:

QUESTION 4

HOTSPOT

You need to assign a phone number to User1 to meet the technical requirements.

How should you complete the command? To answer, select the appropriate options in the answer area.

NOTE: Each correct selection is worth one point.

Hot Area:

	▼	-Identity User1@Litwareinc.com				
<table border="1" style="width: 100%;"> <tr><td>Set-CsUser</td></tr> <tr><td>Set-CsOnlineVoiceUser</td></tr> <tr><td>Update-MgTeamMember</td></tr> <tr><td>Update-MgUserProfilePhone</td></tr> </table>			Set-CsUser	Set-CsOnlineVoiceUser	Update-MgTeamMember	Update-MgUserProfilePhone
Set-CsUser						
Set-CsOnlineVoiceUser						
Update-MgTeamMember						
Update-MgUserProfilePhone						

	▼	"tel:+61370105550" -EnterpriseVoiceEnabled \$true -ErrorAction Stop			
<table border="1" style="width: 100%;"> <tr><td>-LineURI</td></tr> <tr><td>-OnPremLineURI</td></tr> <tr><td>-TelephoneNumber</td></tr> </table>			-LineURI	-OnPremLineURI	-TelephoneNumber
-LineURI					
-OnPremLineURI					
-TelephoneNumber					

Answer Area:

	▼	-Identity User1@Litwareinc.com				
<table border="1" style="width: 100%;"> <tr style="background-color: #e0ffe0;"><td>Set-CsUser</td></tr> <tr><td>Set-CsOnlineVoiceUser</td></tr> <tr><td>Update-MgTeamMember</td></tr> <tr><td>Update-MgUserProfilePhone</td></tr> </table>			Set-CsUser	Set-CsOnlineVoiceUser	Update-MgTeamMember	Update-MgUserProfilePhone
Set-CsUser						
Set-CsOnlineVoiceUser						
Update-MgTeamMember						
Update-MgUserProfilePhone						

	▼	"tel:+61370105550" -EnterpriseVoiceEnabled \$true -ErrorAction Stop			
<table border="1" style="width: 100%;"> <tr style="background-color: #e0ffe0;"><td>-LineURI</td></tr> <tr><td>-OnPremLineURI</td></tr> <tr><td>-TelephoneNumber</td></tr> </table>			-LineURI	-OnPremLineURI	-TelephoneNumber
-LineURI					
-OnPremLineURI					
-TelephoneNumber					

Section:

Explanation:

Reference:

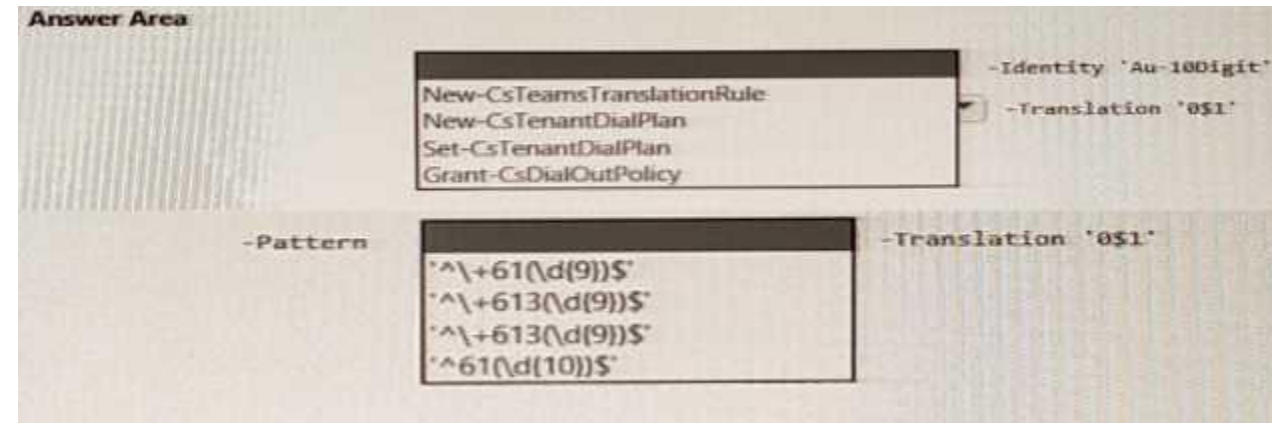
<https://docs.microsoft.com/en-us/powershell/module/skype/set-csuser?view=skype-ps>

QUESTION 5

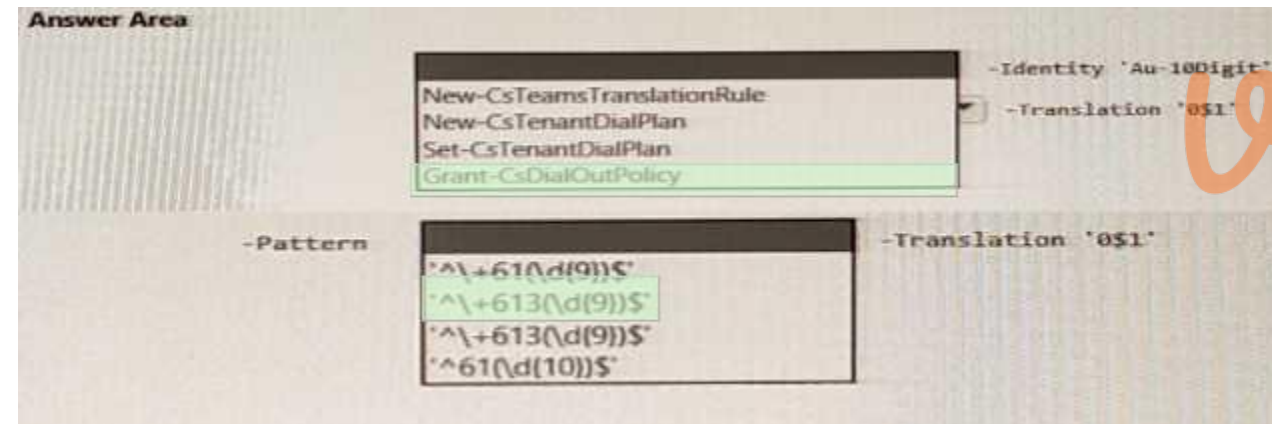
HOTSPOT

You need to ensure that numbers dialed from the Melbourne warehouse conform to the dialing rules of the phone earner. How should you complete the command? To answer, select the appropriate options in the answer area. NOTE: Each correct selection is worth one point.

Hot Area:



Answer Area:



Section:

Explanation:

Box 1: Grant-CsDialOutPolicy

Box 2: '^\\+613(\\d(9))\$'

QUESTION 6

You need to recommend a PSTN solution for the Teams Phone deployment at the retail sites. The solution must meet the technical requirements. What should you include in the recommendation?

- A. Teams Calling Plans
- B. Direct Routing without media bypass
- C. Operator Connect
- D. Direct Routing with media bypass

Correct Answer: C

Section:

Explanation:

Reference:
<https://docs.microsoft.com/en-us/microsoftteams/pstn-connectivity>

QUESTION 7

HOTSPOT

You need to assign a license to users to meet the technical requirements.
How should you complete the PowerShell script? To answer, select the appropriate options in the answer area.

NOTE: Each correct selection is worth one point.

Hot Area:

```
$Users = Import-CSV ./users.csv
Foreach ($Username in $Users) {
  [dropdown] -UserID $Username -AddLicenses [dropdown] }
```

[dropdown]	
New-MsolLicenseOptions	
Set-CsOnlineVoiceUser	
Set-CsUser	
Set-MgUserLicense	

[dropdown]	
MCOEV	
MCOCAP	
MCOPSTN1	
ENTERPRISEPREMIUM	

Answer Area:



```
$Users = Import-CSV ./users.csv
Foreach ($Username in $Users) {
  [dropdown] -UserID $Username -AddLicenses [dropdown] }
```

[dropdown]	
New-MsolLicenseOptions	
Set-CsOnlineVoiceUser	
Set-CsUser	
Set-MgUserLicense	

[dropdown]	
MCOEV	
MCOCAP	
MCOPSTN1	
ENTERPRISEPREMIUM	

Section:

Explanation:

Reference:
<https://docs.microsoft.com/en-us/powershell/module/microsoft.graph.users.actions/setmguserlicense?view=graph-powershell-beta>
<https://docs.microsoft.com/en-us/skypeforbusiness/skype-for-business-and-microsoft-teams-addon-licensing/assign-skype-for-business-and-microsoft-teams-licenses>

QUESTION 8

You need to connect the analog intercoms to Teams Phone.
Which two actions should you perform? Each correct answer presents part of the solution.
NOTE: Each correct selection is worth one point.

- A. Create a trusted application endpoint for Teams.
- B. Create a resource account for each intercom.
- C. Register the ATAs with a Teams-certified SBC.

- D. Create a configuration profile for IP phones.
- E. Enable Direct Routing to a Teams-certified SBC.

Correct Answer: C, E

Section:

Explanation:

Reference:

<https://docs.microsoft.com/en-us/microsoftteams/direct-routing-analog-devices>

Exam B

QUESTION 1

HOTSPOT

You have a Microsoft Teams Phone deployment and a Session Border Controller (SBC) named SBC1.contoso.com.

The SBC has SIP over TLS configured to use the default Microsoft port.

You need to implement Direct Routing from the SBC to Teams Phone.

How should you complete the PowerShell command? To answer, select the appropriate options in the answer area.

NOTE: Each correct selection is worth one point.

Hot Area:

Answer Area

Answer Area:

Answer Area

Section:

Explanation:

QUESTION 2

DRAG DROP

You have a Teams Phone deployment that uses Direct Routing.

You have two users named User1 and User2.

You need to move the assigned licenses and phone number of User1 to User2.

Which four actions should you perform in sequence? To answer, move the appropriate actions from the list of actions to the answer area and arrange them in the correct order.

Select and Place:

.....

Actions

- Assign a voice routing policy to User1.
- Unassign the phone number from User1.
- Unassign the licenses from User1.
- Assign the licenses to User2.
- Assign the phone number to User2.

Answer Area

.....

Navigation icons: right arrow, left arrow, up arrow, down arrow.

Correct Answer:

.....

Actions

- Assign a voice routing policy to User1.
-
-
-
-

Answer Area

- Unassign the phone number from User1.
- Unassign the licenses from User1.
- Assign the licenses to User2.
- Assign the phone number to User2.

Navigation icons: right arrow, left arrow, up arrow, down arrow.

Vdumps

Section:

Explanation:

- Unassign the phone number from User1.
- Unassign the licenses from User1.
- Assign the licenses to User2.
- Assign the phone number to User2.

QUESTION 3

You have a Teams Phone deployment that contains two sites named Sit1 and Site2. Each site has a Session Border Controller (SBC). You have a user named User1. User1 relocates from Site1 to Site2 and is assigned a new phone number. You need to change a policy assigned to User1 to ensure that the SBC at Site2 is used when the user makes outbound calls. What should you change?

- A. the calling policy
- B. the voice routing policy
- C. the caller ID policy
- D. the dial plan

Correct Answer: B

Section:

QUESTION 4

You have a Microsoft Teams Phone deployment.
You need to ensure that when a user dials an emergency number, the security desk receives a notification to join the call.
Which type of policy should you configure?

- A. messaging
- B. emergency call routing
- C. emergency calling
- D. calling

Correct Answer: C

Section:

QUESTION 5

You have a Microsoft Teams Phone deployment.
Users currently provide a five-digit PIN number to dial in to a meeting.
You need to change the PIN length to require users to enter a seven-digit PIN number.
What should you configure from the Microsoft Teams admin center?

- A. audio conferencing
- B. meeting policies
- C. conference bridges
- D. customization policies

Correct Answer: A

Section:

QUESTION 6

HOTSPOT
You have a Microsoft Teams deployment.
Currently, all meeting invites only display in English.
You need to ensure that join information for the meeting invites display in both English and Spanish.
How should you complete the PowerShell command? To answer, select the appropriate options in the answer area.
NOTE: Each correct selection is worth one point.

Hot Area:

Answer Area

The screenshot shows a PowerShell command being entered: `Set-CsTeamsMeetingPolicy -Identity "Global" -MeetingInviteLanguages 'en-US,es-MX'`. Two dropdown menus are open to show available options. The first dropdown, for the command name, has 'Set-CsTeamsMeetingPolicy' selected. The second dropdown, for the parameter value, has '-LiveInterpretationEnabledType' selected.

Answer Area:

Answer Area

```
Set-CsTeamsMeetingPolicy -Identity "Global" -MeetingInviteLanguages ,en-US,es-MX
```

Section:

Explanation:

QUESTION 7

You have a Microsoft Teams deployment.
You configure Quality of Service (QoS) to prioritize network traffic for Teams communications.
You need to validate the QoS configurations.
What should you do?

- A. From Microsoft Call Quality Dashboard, review Reliability Reports.
- B. From Microsoft Call Quality Dashboard, review Quality of Experience Reports.
- C. Perform a packet capture and validate the source port numbers.
- D. Perform a packet capture and validate that the packets have DSCP markings.

Correct Answer: D

Section:

QUESTION 8

DRAG DROP

You have a Microsoft Teams Phone with Calling Plan deployment.
You create an auto attendant named AutoAttend1 and associate AutoAttend1 to a resource account named IT Service Desk.
You need to assign an existing phone number to AutoAttend1. The phone number was allocated to a user already.
Which three actions should you perform in sequence? To answer, move the appropriate actions from the list of actions to the answer area and arrange them in the correct order.

Select and Place:

Actions

- Release the phone number.
- Change the phone number usage to **Conference**.
- Unassign the phone number.
- Assign the phone number to the IT Service Desk Resource account.
- Change the phone number usage to **Voice app**.



Answer Area



Correct Answer:

Actions

Release the phone number.

Change the phone number usage to **Conference**.

Answer Area

Unassign the phone number.

Assign the phone number to the IT Service Desk Resource account.

Change the phone number usage to **Voice app**.

Section:**Explanation:**

Unassign the phone number.

Assign the phone number to the IT Service Desk Resource account.

Change the phone number usage to Voice app.

QUESTION 9

You have a Microsoft Teams Phone deployment.

Users report poor audio calls.

You need to investigate which protocol is being used for the affected calls.

Which Call Quality Dashboard (CQD) report should you review?

- A. Quality of Experience
- B. Quality Drill Down
- C. Summary
- D. Rate My Call

Correct Answer: B

Section:**QUESTION 10**

Your network contains an on-premises Active Directory Domain Services (AD DS) domain named contoso.com.

You have a Microsoft 365 subscription.

You plan to implement Microsoft Teams Rooms shared room video conferencing.

You deploy 50 Teams Rooms on Windows devices and join each device to contoso.com.

You need to enable Direct Guest Join on all 50 devices. The solution must minimize administrative effort.

What should you do?

- A. Run the Set-CsVideoInteropServiceProvider cmdlet.
- B. From the Microsoft Teams admin center, configure a configuration policy.
- C. From the Microsoft Teams admin center, modify the Guest access settings.
- D. Deploy a SkypeSettings.xml file to each device by using Group Policy.

Correct Answer: B

Section:

QUESTION 11

HOTSPOT

You have a Teams Phone deployment that contains an office in Mumbai.
The Mumbai office has a new Session Border Controller (SBC) named SBC1 that uses Direct Routing.
Users must be able to use SBC1 only when they are at the Mumbai office.
How should you complete the commands? To answer, select the appropriate options in the answer area.
NOTE: Each correct selection is worth one point.

Hot Area:

Answer Area

The screenshot shows a hot spot question interface with two PowerShell commands. The first command is `Set-CsTenantNetworkSite -Identity "Mumbai"` with a dropdown menu containing `-LocationPolicy` (selected), `-NetworkRoamingPolicy`, `-OnlineVoiceRoutingPolicy`, and `-EnableLocationBasedRouting`. The second command is `Set-CSOnlinePSTNGateway -Identity sbc1.contoso.com` with a dropdown menu containing `-MediaBypass` (selected), `-SendSipOptions`, `-PidfloSupported`, and `-GatewaySiteLbrEnabled`. The text `$true` and `$true -GatewaySiteID "Mumbai"` are visible to the right of the dropdowns.

Answer Area:

Answer Area

This screenshot is identical to the one above, showing the same PowerShell commands and dropdown menus. The selected options are `-LocationPolicy` and `-MediaBypass`.

Section:

Explanation:

QUESTION 12

You have a Teams Phone deployment that contains offices in Brisbane and Melbourne. You deploy a new Session Border Controller (SBC) named SBC2 to the Brisbane office. You need to ensure that emergency calls from only the users in the Brisbane office use SBC2. Which two actions should you perform? Each correct answer presents part of the solution. NOTE: Each correct selection is worth one point.

- A. Create a new emergency call routing policy.
- B. Create a new dial plan.
- C. Assign a dial plan to the Brisbane office users.

- D. Create a new emergency calling policy.
- E. Assign an emergency calling policy to the Brisbane office users.
- F. Assign an emergency call routing policy to the Brisbane office users.

Correct Answer: A, E

Section:

QUESTION 13

HOTSPOT

You have a Microsoft Teams Phone deployment that uses auto attendants. Holiday call settings are configured as shown in the following table.

Name	Date
Emergency	1/1/2024 – 1/2/2024
End of Year Holidays	12/23/2022 – 1/8/2023
Outage Notification	1/18/2023 – 1/19/2023

The Emergency settings are configured as shown in the Emergency exhibit. (Click the Emergency tab.)



Emergency

Holiday

Emergency

Greeting

- No greeting
- Play an audio file ⓘ
- Add a greeting message ⓘ

None of our agents are available due to an unforeseen emergency. Please leave a message

Call routing options

- Disconnect
- Redirect call ⓘ

Redirect to ⓘ

External phone number



= +61370105000



- Play menu options

The logo for Vdumps.com, featuring a stylized orange 'V' followed by the word 'dumps' in a grey sans-serif font.

The End of Year Holidays settings are configured as shown in the Holiday exhibit. (Click the Holiday tab.)

End of Year Holidays

Holiday

End of Year Holidays

Greeting

- No greeting
- Play an audio file ⓘ
- Add a greeting message ⓘ

Thanks for calling, we are presently closed for the end of year festivities. We would love to take your call in the new year. Until then, goodbye!

Call routing options

- Disconnect
- Redirect call ⓘ
- Play menu options

The logo for Vdumps.com, featuring a stylized orange 'V' followed by the word 'dumps' in a grey sans-serif font.

The Outage Notification settings are configured as shown in the Outage exhibit. (Click the Outage tab.)

Outage Notification

Holiday

Outage ▼

Greeting

- No greeting
- Play an audio file ⓘ
- Add a greeting message ⓘ

Please be advised that customers may be experiencing an outage due to scheduled maintenance.

Call routing options

- Disconnect
- Redirect call ⓘ
- Play menu options

Force Listen Off ⓘ

Set up the greeting and menu options.

- Play an audio file ⓘ
- Add a greeting message ⓘ

Our estimated time of resolution is 10:00am Please press 1 if you need to speak with an agent, otherwise please hang up

Set menu options ⓘ

+ Assign a dial key 🗑️ Delete

Dial key	Voice command	Redirect to	Destination	Transcription	Skip voicemail system message ⓘ
----------	---------------	-------------	-------------	---------------	---------------------------------

1 ▼

Voice app ▼



For each of the following statements, select Yes if the statement is true. Otherwise, select No.
NOTE: Each correct selection is worth one point.

Hot Area:

Answer Area

Statements	Yes	No
When a caller calls on 1/1/2024, the call will be directed to voicemail.	<input type="radio"/>	<input type="radio"/>
When a caller calls on 1/18/2023, the call will be directed automatically to T-AA.	<input type="radio"/>	<input type="radio"/>
When a caller calls on 12/25/2022, the user will hear a greeting message.	<input type="radio"/>	<input type="radio"/>

Answer Area:

Answer Area

Statements	Yes	No
When a caller calls on 1/1/2024, the call will be directed to voicemail.	<input checked="" type="radio"/>	<input type="radio"/>
When a caller calls on 1/18/2023, the call will be directed automatically to T-AA.	<input type="radio"/>	<input checked="" type="radio"/>
When a caller calls on 12/25/2022, the user will hear a greeting message.	<input checked="" type="radio"/>	<input type="radio"/>

Section:

Explanation:

QUESTION 14

You have a Microsoft Teams Phone deployment that uses Teams Calling Plans, Direct Routing, and Operator Connect services. You need to enable PSTN services for 100 new users. The solution must minimize administrative effort.

Which cmdlet should you run?

- A. Set-CsOnlineVoiceUser
- B. Set-CsUscr
- C. Set-CsIPPhonePolicy
- D. Set-CsPhoneNumberAssignment

Correct Answer: A

Section:

QUESTION 15

You need to implement Local Media Optimization.

- A. 132.245.0.0/16 and 40.104.0.0/15
- B. 10.10.0.0/24 and 10.11.0.0/24
- C. 8.8.8.8/32 and 4.4.2.2/32
- D. 52.112.0.0/14 and 52.120.0.0/14

Correct Answer: D

Section:

Explanation:

Reference:

<https://docs.microsoft.com/en-us/microsoftteams/direct-routing-plan>

QUESTION 16

DRAG DROP

You have a Microsoft Teams Rooms on Windows system in a local conference room. The system is NOT joined to Active Directory.

You need to ensure that the system can be managed by using RDP.

Which three actions should you perform in sequence? To answer, move the appropriate actions from the list of actions to the answer area and arrange them in the correct order.

Select and Place:

Actions

- Press **CTRL + ALT + DELETE**.
- Configure the Remote Desktop settings and sign out.
- From Settings in the Microsoft Teams Rooms app, select **Windows settings**.
- Select the Administrator account and enter the password.
- From Settings in the Microsoft Teams Rooms app, select the **Account** tab.

Answer Area

Vdumps

Correct Answer:

Actions

- From Settings in the Microsoft Teams Rooms app, select **Windows settings**.
- From Settings in the Microsoft Teams Rooms app, select the **Account** tab.

Answer Area

- Configure the Remote Desktop settings and sign out.
- Select the Administrator account and enter the password.
- Press **CTRL + ALT + DELETE**.

Section:

Explanation:

QUESTION 17

You have an analog phone system.

You plan to migrate to Microsoft Teams Phone.

You need to recommend devices for common area phones that any user can use. The solution must meet the following requirements;

- Can access the Teams directory for dial by name.
- Can be administered remotely.
- Can place and pick up calls.
- Support hot desking.
- Minimize costs.

Which type of devices should you recommend?

- A. Microsoft-certified 3PIP handsets
- B. Microsoft Teams-certified handsets
- C. Microsoft Teams Rooms devices
- D. Microsoft-certified headsets
- E. the existing analog handsets

Correct Answer: C

Section:

QUESTION 18

DRAG DROP

You need to provision a Microsoft Teams-certified common area phone device at a field site. The solution must ensure that a standard user can complete the physical handset tasks without sharing credentials.

Which four actions should you perform in sequence? To answer, move the appropriate actions from the list of actions to the answer area and arrange them in the correct order.

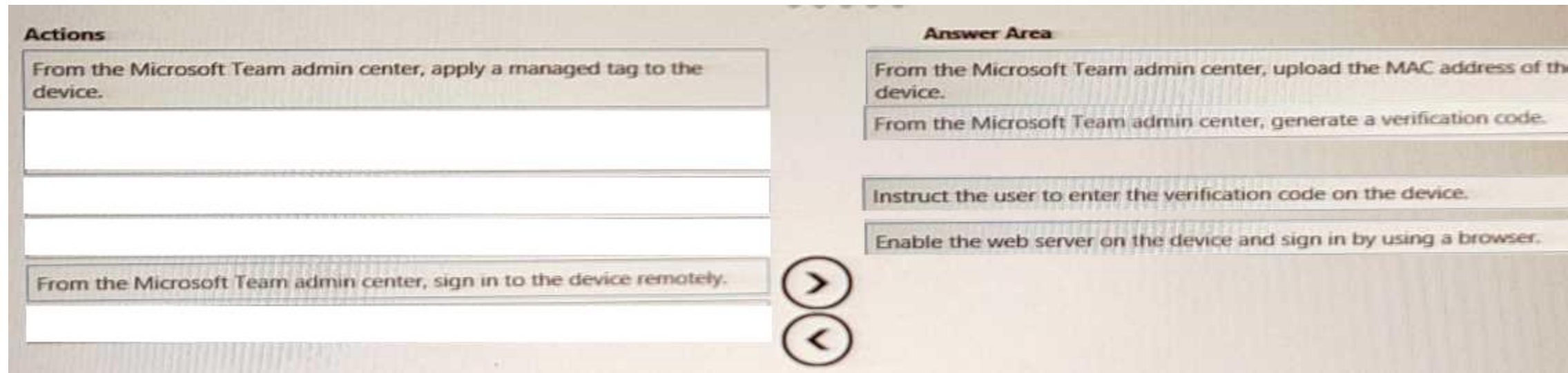
Select and Place:

Actions

- From the Microsoft Team admin center, apply a managed tag to the device.
- From the Microsoft Team admin center, upload the MAC address of the device.
- Instruct the user to enter the verification code on the device.
- Enable the web server on the device and sign in by using a browser.
- From the Microsoft Team admin center, sign in to the device remotely.
- From the Microsoft Team admin center, generate a verification code.

Answer Area

Correct Answer:



Section:

Explanation:

Reference:

<https://docs.microsoft.com/en-us/MicrosoftTeams/devices/remote-provision-remote-login>

QUESTION 19

Your company deploys 200 Microsoft Teams Rooms on Windows systems.

You are evaluating whether to purchase the Microsoft Teams Rooms Premium license for the rooms.

Which two actions require the Microsoft Teams Rooms Premium license? Each correct answer presents a complete solution.

NOTE: Each correct selection is worth one point

- A. Download device logs.
- B. View peripheral health.
- C. Get reporting insights into room usage and participant count
- D. Postpone updates until a certain date.
- E. Modify the Direct guest jam settings

Correct Answer: B, C

Section:

Explanation:

Reference: <https://docs.microsoft.com/en-us/microsoftteams/rooms/microsoft-teams-roomspremium>

QUESTION 20

You have a Microsoft Teams Phone deployment that uses Direct Routing.

You connect a new Session Border Controller (SBC).

You need to verify that all the voice features work as expected for calls that traverse the SBC

What should you use?

- A. the SIP Tester client script
- B. Microsoft 365 network connectivity test tool
- C. Microsoft Teams Network Assessment Tool
- D. Microsoft Remote Connectivity Analyzer

Correct Answer: C



Section:

QUESTION 21

DRAG DROP

You have a Microsoft Teams Phone deployment.

When you attempt to deploy a Session Border Controller (SBC) named sfac1xontoso.com. you receive the following error message: "We cant use the "SBCI-Contoso.com" domain as it hasn't been set up in the organization. Try agaax. If you continue to have problems, contact Microsoft customer support."

You need to add the SBC to the tenant.

Which three actions should you perform in sequence? To answer, move the appropriate actions from the list of actions to the answer area and arrange them in the correct order.

Select and Place:

Actions

- From the Microsoft 365 admin center, add a licensed user that has a UPN to the contoso.com domain.
- From the Microsoft Teams admin center, enable external access for the contoso.com domain.
- From the Microsoft Teams admin center, add the SBC as sbc1.contoso.onmicrosoft.com.
- From the Microsoft 365 admin center, validate the contoso.com domain.
- From the Microsoft Teams admin center, add the SBC as sbc1.contoso.com.

Answer Area

Correct Answer:

Actions

-
- From the Microsoft Teams admin center, enable external access for the contoso.com domain.
-
- From the Microsoft 365 admin center, validate the contoso.com domain.
-

Answer Area

- From the Microsoft Teams admin center, add the SBC as sbc1.contoso.onmicrosoft.com.
- From the Microsoft 365 admin center, add a licensed user that has a UPN to the contoso.com domain.
- From the Microsoft Teams admin center, add the SBC as sbc1.contoso.com.

Section:

Explanation:

From the Microsoft Teams admin center, add the SBC as sbc1.contoso.onmicrosoft.com.

From teh Microsoft 365 admin center, add a licenced user that has a UPN to the contoso.com domain.

From the Microsoft Teams admin center, add the SBC as sbc1.contoso.com.

QUESTION 22

You are adding new sites to your company.

The reporting team needs location-based reports in Microsoft Power B1 that include the subnet information of the new sites.

You need to add the information to Microsoft Teams.

What should you do?

- A. From the Microsoft Call Quality Dashboard, upload tenant data.
- B. From the Microsoft Teams admin center, define a network subnet.

- C. From the Microsoft Teams admin center, define a network topology.
- D. From the Microsoft Teams admin center, add the subnets to the Network planner.

Correct Answer: A

Section:

Explanation:

Reference: <https://docs.microsoft.com/en-us/microsoftteams/cqd-upload-tenant-building-data>

QUESTION 23

DRAG DROP

A user uses the Microsoft Teams client on a Windows device.

The user reports call failures.

You need to send the Teams client logs to Microsoft support to troubleshoot the call failures.

Which three actions should you perform in sequence? To answer, move the appropriate actions from the list of actions to the answer area and arrange them in the correct order.

Select and Place:

Actions

- From Settings in the Microsoft Teams admin center, select **Enable logging for meeting diagnostics**.
- From Users in the Microsoft Teams admin center, modify the Voice settings of the user.
- Send the Debug logs to Microsoft support.
- Right-click the Teams notification icon and select **Collect support files**.
- Send the Media logs to Microsoft support.
- From the Microsoft Teams admin center, locate the failed calls on the Meetings & calls tab of the user.

Answer Area

Correct Answer:

Actions

- From Settings in the Microsoft Teams admin center, select **Enable logging for meeting diagnostics**.
- From Users in the Microsoft Teams admin center, modify the Voice settings of the user.
- Send the Debug logs to Microsoft support.
- Right-click the Teams notification icon and select **Collect support files**.
- Send the Media logs to Microsoft support.
- From the Microsoft Teams admin center, locate the failed calls on the Meetings & calls tab of the user.

Answer Area

- From Users in the Microsoft Teams admin center, modify the Voice settings of the user.
- Right-click the Teams notification icon and select **Collect support files**.
- From the Microsoft Teams admin center, locate the failed calls on the Meetings & calls tab of the user.

Section:

Explanation:

From Users in the Microsoft Teams admin center, modify the Voice settings of the user.

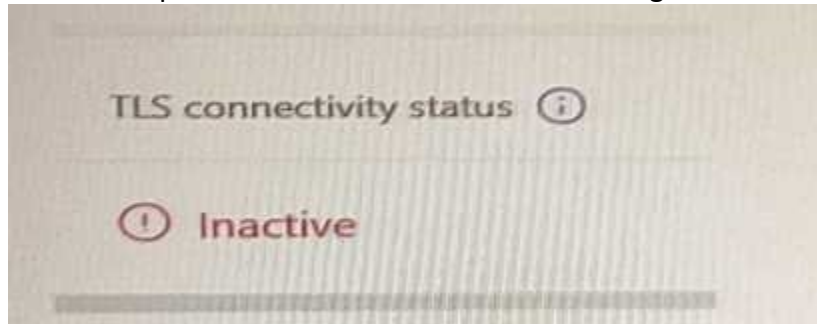
Right-click the Teams notification icon and select Collect support files.
From the Microsoft Teams admin center, locate the failed calls on the Meetings & calls tab of user.

QUESTION 24

You have a Microsoft Teams Phone deployment.

You are deploying Direct Routing by using a certified Session Border Controller (SBC). The FQDN of the SBC is sbc1.contoso.com. You use signaling port 5067.

You cannot place calls and receive an error message in the Microsoft Teams admin center as shown in the following exhibit.



What is a possible cause of the issue?

- A. The firewall blocks traffic on port 5067
- B. Location-Based Routing is enabled for the SBC.
- C. Calling plan licenses are not assigned to users.
- D. The SIP options are disabled.

Correct Answer: A

Section:

Explanation:

Reference:

<https://docs.microsoft.com/en-us/microsoftteams/troubleshoot/phone-system/direct-routing/sipoptions-tls-certificate-issues>



QUESTION 25

You have a Microsoft 365 tenant that has Modern authentication enabled for an services Multi-factor authentication (MFA) is enforced for all users.

You are deploying Microsoft Teams Rooms.

The first time you attempt to sign in to a Teams Rooms, you receive an error message indicating that the device cannot sign in to Teams.

You verify that Modern authentication is enabled in Teams Rooms.

What prevents you from signing in?

- A. The Microsoft Authenticates app is not configured for the Teams Rooms account-
- B. The Teams Rooms account is not licensed for Microsoft intune.
- C. Teams Rooms must be domain joined first.
- D. MFA is unsupported In reams Rooms.

Correct Answer: D

Section:

QUESTION 26

You have a Microsoft Teams Phone deployment. The 613 7010 5XXX phone number range is allocated to the Session Border Controller (SBC). A user named User1 is configured as shown in the following exhibit.


```
PS C:\> get-csonlineuser -Identity user1@litwareinc.com

DisplayName           : User One
EnterpriseVoiceEnabled : True
RegistrarPool        : sipoolme1au103.infra.lync.com
OnPremLineURIManuallySet : False
OnPremLineURI        :
LineURI              : +61370105555
OnlineVoiceRoutingPolicy : VIC-All
DialPlan              : AU
TenantDialPlan        : Australia-VIC
MCOValidationErrors  : {}
VoicePolicy           :
InterpretedUserType   : HybridOnlineTeamsOnlyUser
UserProvisionType     :
TeamsUpgradeEffectiveMode : TeamsOnly
```

User1 reports that when an external caller attempts to call the phone number or User1, the external caller receives an error message.

User 1 can make outbound calls, but no caller ID appears.

Which two commands should you run to resolve the issues? Each correct answer presents part of the solution.

NOTE: Each correct selection is worth one point.

A)

```
Set-CsOnlineVoiceUser user1@litwareinc.com -TelephoneNumber "+61370105555"
```

B)

```
Set-CsOnlineVoiceUser user1@litwareinc.com -TelephoneNumber $null
```

C)

```
Set-CsUser user1@litwareinc.com -OnPremLineURI "tel:+61370105555"
```

D)

```
Set-CsUser user1@litwareinc.com -EnterpriseVoiceEnabled $false
```

E)

```
Grant-CsOnlineVoiceRoutingPolicy -Identity user1@litwareinc.com -PolicyName $null
```

- A. Option A
- B. Option B
- C. Option C
- D. Option D
- E. Option E

Correct Answer: A, D

Section:

Explanation:

Reference:

<https://docs.microsoft.com/en-us/powershell/module/skype/set-csonlinevoiceuser?view=skype-ps>

QUESTION 27

HOTSPOT

You have a Microsoft Teams Phone deployment. Direct Routing is enabled for all users. The users can place and receive PSTN calls. You are implementing emergency numbers in Teams.

You need to remove the + symbol from any three-digit calls to the Session Border Controller (SBC)..

How should you complete the PowerShell script? To answer, drag the appropriate values to the correct targets. Each value may be used once, more than once, or not at all. You may need to drag the split bar between panes or scroll to view content.

NOTE: Each correct selection is worth one point.

Hot Area:

	▼	-Identity 'TR1' -Pattern '^\\+?(\\d{3})\$' -Translation '\$1'	
New-CsOnlinePSTNGateway			
New-CsOnlinePstnUsage			
New-CsTeamsTranslationRule			
New-CsVoiceNormalizationRule			

	▼	-Identity SBC1@contoso.com		▼	'TR1'
Set-CsOnlineAudioConferencingRoutingPolicy				-InboundPSTNumberTranslationRules	
Set-CsOnlinePSTNGateway				-OnlinePstnUsages	
Set-CsOnlinePstnUsage				-OutboundPstnNumberTranslationRules	
Set-CsOnlineVoiceUser				-OutboundTeamsNumberTranslationRules	
				-Usage	

Answer Area:

	▼	-Identity 'TR1' -Pattern '^\\+?(\\d{3})\$' -Translation '\$1'	
New-CsOnlinePSTNGateway			
New-CsOnlinePstnUsage			
New-CsTeamsTranslationRule			
New-CsVoiceNormalizationRule			

	▼	-Identity SBC1@contoso.com		▼	'TR1'
Set-CsOnlineAudioConferencingRoutingPolicy				-InboundPSTNumberTranslationRules	
Set-CsOnlinePSTNGateway				-OnlinePstnUsages	
Set-CsOnlinePstnUsage				-OutboundPstnNumberTranslationRules	
Set-CsOnlineVoiceUser				-OutboundTeamsNumberTranslationRules	
				-Usage	

Section:

Explanation:

Reference:

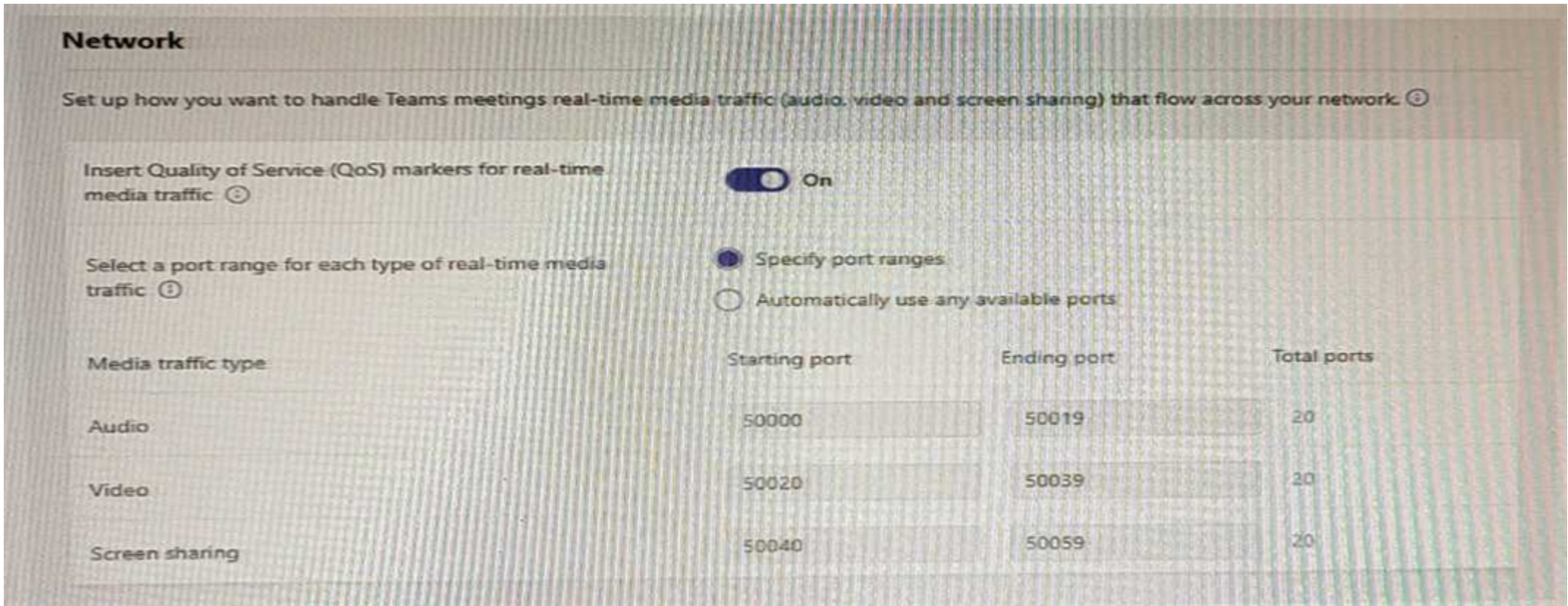
<https://docs.microsoft.com/en-us/powershell/module/skype/newcsteamtranslationrule?view=skype-ps>

<https://docs.microsoft.com/en-us/microsoftteams/direct-routing-translate-numbers>

QUESTION 28

HOTSPOT

The network meeting settings for Microsoft Teams are configured as shown in the following exhibit.



Use the drop-down menus to select the answer choice that completes each statement based on the information presented in the graphic.
 NOTE: Each correct selection is worth one point.

Hot Area:

Answer Area

The Teams Transport Relay service will use UDP ports [answer choice].

3478 through 3481
 50000 through 50019
 50020 through 50039
 50040 through 50050

If you set Insert Quality of Service (QoS) markers for real-time media traffic to **Off**, the Teams Transport Relay service will use UDP port [answer choice].

80
 443
 3478
 50000

Answer Area:

Answer Area

The Teams Transport Relay service will use UDP ports [answer choice].

- 3478 through 3481
- 50000 through 50019
- 50020 through 50039
- 50040 through 50050

If you set Insert Quality of Service (QoS) markers for real-time media traffic to **Off**, the Teams Transport Relay service will use UDP port [answer choice].

- 80
- 443
- 3478
- 50000

Section:

Explanation:

QUESTION 29

You need to provide Microsoft Teams users with the ability to perform PSTN calling through a Session Border Controller (SBC). Which licenses can you assign to achieve the goal?

- A. Office 365 E3 and Office 365 E5
- B. Microsoft 365 E3 and Microsoft 365 E5
- C. Microsoft 365 E5 and Office 365 E5
- D. Office 365 E3 and Microsoft 365 E3

Correct Answer: D

Section:

QUESTION 30

Your company assigns an Office 365 E3 license to each user. All users are in France.

You plan to deploy Direct Routing.

Which additional license should you assign to the users?

- A. Microsoft 365 Audio Conferencing
- B. Microsoft 365 Phone System - Virtual
- C. Microsoft 365 Phone System
- D. Microsoft 365 Domestic and International Calling Plan
- E. Microsoft 365 Domestic Calling

Correct Answer: C

Section:

Explanation:

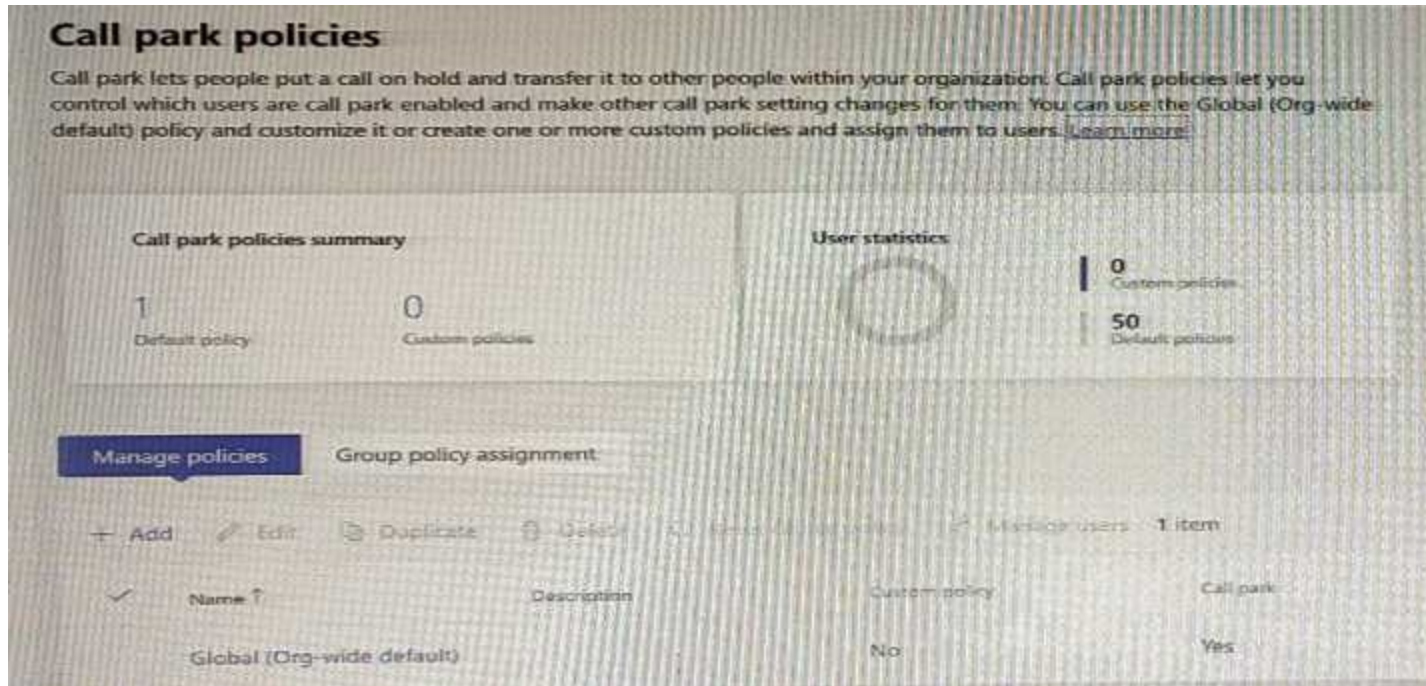
Reference:

<https://docs.microsoft.com/en-us/microsoftteams/direct-routing-plan>

QUESTION 31

Your company currently allows call park for all PSIN users. The call park policies are configured as shown in the exhibit. (Click the Exhibit tab.)





You have a Microsoft 365 group named Help Desk.

You need to ensure that only the Help Desk group can use call park. The solution must minimize the number of policies and administrative effort.

Which three actions should you perform? Each correct answer presents part of the solution.

NOTE: Each correct selection is worth one point.

- A. Assign Policy2 to all users.
- B. In the Global (Org-wide default) policy, set Allow call park to Off.
- C. Create a new call park policy named Policy2 and set Allow call park to Off.
- D. Assign Policy1 to the Help Desk group.
- E. Assign the Global (Org-wide default) policy to the users in the Help Desk group.
- F. Create a new call park policy named Policy1 and set Allow call park to On



Correct Answer: B, D, F

Section:

Explanation:

Reference:

<https://docs.microsoft.com/en-us/microsoftteams/call-park-and-retrieve>

QUESTION 32

Your company has an office in Seattle.

The default dial-in number for the company's Microsoft Teams meetings has an area code of 425.

The company does NOT have an office in New York. However, most of the company's customers are in New York.

You need to get a new default dial-in number that has a local 718 area code. You will NOT define additional location information in Teams.

Which two actions should you perform before you assign the bridge? Each correct answer presents part of the solution.

NOTE: Each correct selection is worth one point.

- A. Get a Dedicated conference bridge (Toll) number.
- B. Search for new numbers by using a 718 area code.
- C. Get an auto attendant toll-free number.
- D. Get a Dedicated conference bridge (Toll Free) number.
- E. Search for new numbers by using New York.

Correct Answer: A, D

Section:

QUESTION 33

HOTSPOT

Your company is migrating from a legacy PBX system to Microsoft Teams.

The phone number range is +1-423-555-1xxx. The PBX system uses four-digit dialing internally.

Extensions are the last four digits of the number.

You need to ensure that you can use four-digit dialing for your numbers in Teams. The solution must minimize administrative effort. How should you configure the normalization rule? To answer, select the appropriate options in the answer area

a. NOTE: Each correct selection is worth one point.

Hot Area:

Answer Area

Pattern:	<input type="checkbox"/> <code>^\d(4))\$</code>
Translation:	<input type="checkbox"/> <code>^(1\d(3))\$</code>
	<input type="checkbox"/> <code>+1423555\$1</code>
	<input type="checkbox"/> <code>+1423555\$1\$3</code>
	<input type="checkbox"/> <code>+14235551\d?3</code>
	<input type="checkbox"/> <code>+14235551\d(3)</code>

Translation:

<input type="checkbox"/> <code>^\d(4))\$</code>
<input type="checkbox"/> <code>^(1\d(3))\$</code>
<input type="checkbox"/> <code>+1423555\$1</code>
<input type="checkbox"/> <code>+1423555\$1\$3</code>
<input type="checkbox"/> <code>+14235551\d?3</code>
<input type="checkbox"/> <code>+14235551\d(3)</code>

Answer Area:

Answer Area

Pattern:	<input type="checkbox"/> <code>^\d(4))\$</code>
Translation:	<input type="checkbox"/> <code>^(1\d(3))\$</code>
	<input checked="" type="checkbox"/> <code>+1423555\$1</code>
	<input checked="" type="checkbox"/> <code>+1423555\$1\$3</code>
	<input type="checkbox"/> <code>+14235551\d?3</code>
	<input type="checkbox"/> <code>+14235551\d(3)</code>

Translation:

<input checked="" type="checkbox"/> <code>^\d(4))\$</code>
<input type="checkbox"/> <code>^(1\d(3))\$</code>
<input type="checkbox"/> <code>+1423555\$1</code>
<input type="checkbox"/> <code>+1423555\$1\$3</code>
<input type="checkbox"/> <code>+14235551\d?3</code>
<input type="checkbox"/> <code>+14235551\d(3)</code>

Section:

Explanation:

QUESTION 34

You have a Microsoft Teams Phone deployment that is used in the United States. You need to ensure that emergency calls placed to 9911. What should you configure?

- A. a dial plan normalization rule
- B. an emergency calling policy
- C. an emergency call routing policy
- D. an outbound PSTN number translation rule

Correct Answer: D

Section:

QUESTION 35

You are migrating users from Microsoft Skype for Business to Microsoft Teams. You plan to create an auto attendant that can be used by all the users during the migration. You need to create the resource account for the auto attendant. What should you use?

- A. the Resource accounts node in the Microsoft Teams admin center
- B. the Users node in the Microsoft 365 admin center
- C. the New-CsHybridApplicationEndpoint cmdlet
- D. the New-CsOnlineApplicationEndpoint cmdlet
- E. the New-CsOnlineApplicationInstance cmdlet

Correct Answer: A

Section:

QUESTION 36

You port phone numbers from a legacy earner to Microsoft Teams Phone to use with Microsoft Teams Calling Plans. You attempt to assign a number to a resource account that will be used by an auto attendant, but the number does NOT appear on the list of available numbers. You need to ensure that you can assign the number to the resource account. What should you do?

- A. Submit a request to convert the number from a user number to a service number.
- B. Run the Set-CsOnlineApplicationInstance cmdlet.
- C. Run the Set-CsTeamsUnassignedNumber Treatment cmdlet.
- D. Order a new number from Microsoft.

Correct Answer: B

Section:

Explanation:

Reference:

<https://docs.microsoft.com/en-us/powershell/module/skype/setcsonlineapplicationinstance?view=skype-ps>

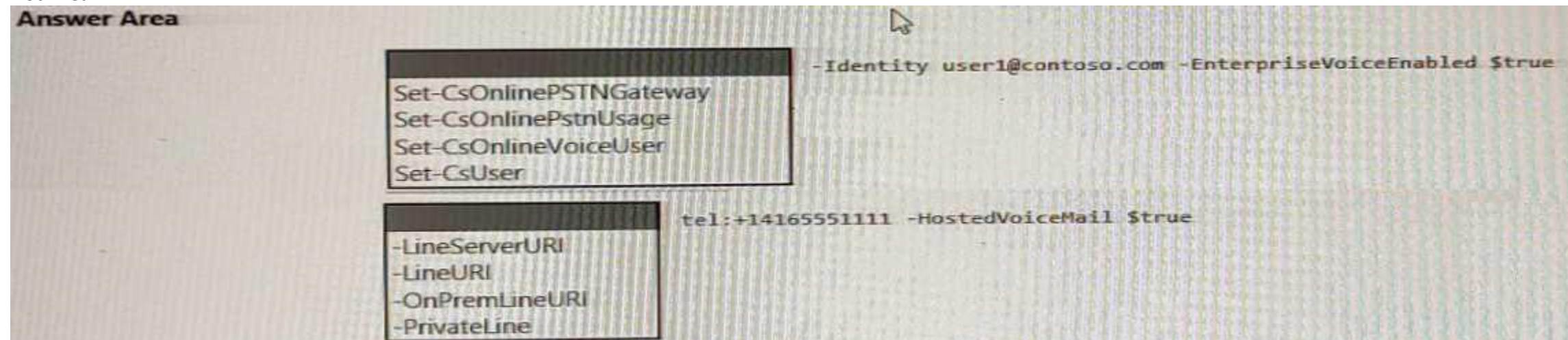
QUESTION 37

HOTSPOT

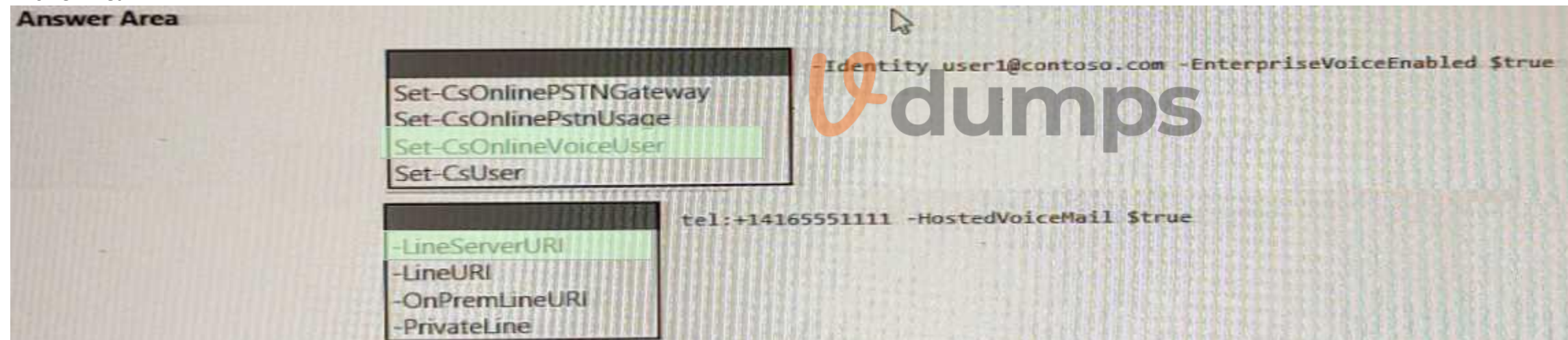


You have a Microsoft Teams Phone deployment.
You have a cloud-only user named user1@contoso.com.
You need to enable a Direct Routing phone number for user1@contoso.com.
How should you complete the PowerShell script? To answer, select the appropriate options in the answer area.
NOTE: Each correct selection is worth one point.

Hot Area:



Answer Area:



Section:

Explanation:

QUESTION 38

You have a Microsoft Teams Phone deployment.
You need to ensure that a user named user1@contoso.com can call international phone numbers by using Direct Routing.
Which type of policy should you use?

- A. a caller ID policy
- B. a calling policy
- C. a teams policy
- D. a voice routing policy

Correct Answer: D

Section:

QUESTION 39

DRAG DROP

From Voice in the Microsoft Teams admin center, you select Operators and add an operator.

You need to enable users for Microsoft Teams Phone.

Which three actions should you perform in sequence? To answer, move the appropriate actions from the list of actions to the answer area and arrange them in the correct order.

Select and Place:

Actions

Answer Area

Acquire phone numbers.

Assign phone numbers to users.

Run the `set-CsUser` cmdlet.

Run the `New-CsOnlineNumberPortInOrder` cmdlet.

Run the `New-CsHybridTelephoneNumber` cmdlet.

Create valid emergency addresses.



Correct Answer:

Actions

Run the `Set-CsUser` cmdlet.

Run the `New-CsOnlineNumberPortInOrder` cmdlet.

Run the `New-CsHybridTelephoneNumber` cmdlet.

Answer Area

Acquire phone numbers.

Create valid emergency addresses.

Assign phone numbers to users.

Section:

Explanation:

Reference:

<https://docs.microsoft.com/en-us/microsoftteams/operator-connect-configure>



QUESTION 40

HOTSPOT

You have a dial plan named DPI.

You need to assign DPI to a new Microsoft Teams user named User1. You must verify that the appropriate dial plan and the associated normalization rules are assigned to User1.

How should you complete the PowerShell script? To answer, select the appropriate options in the answer area.

NOTE: Each correct selection is worth one point.

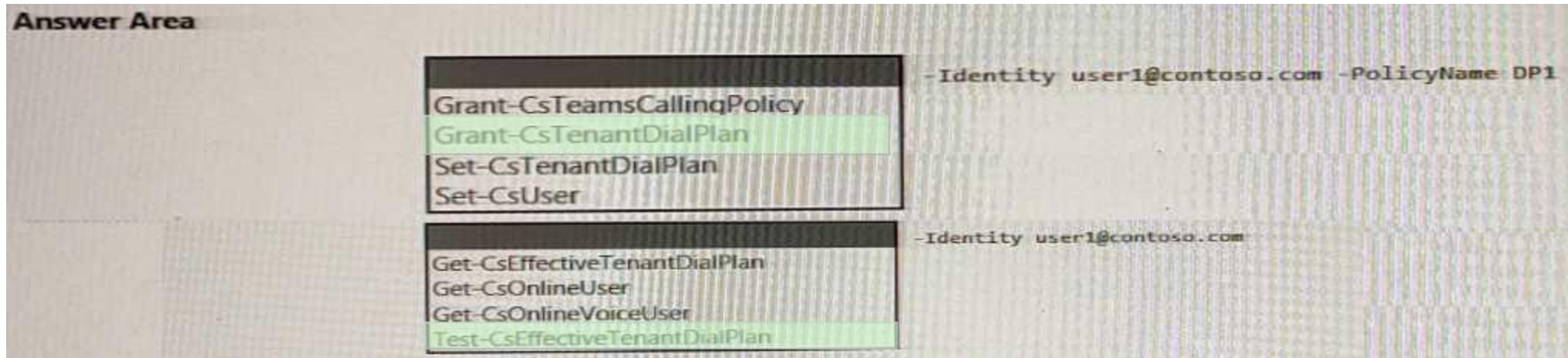
Hot Area:

Answer Area

```
Grant-CsTeamsCallingPolicy -Identity user1@contoso.com -PolicyName DP1
Grant-CsTenantDialPlan
Set-CsTenantDialPlan
Set-CsUser

Get-CsEffectiveTenantDialPlan -Identity user1@contoso.com
Get-CsOnlineUser
Get-CsOnlineVoiceUser
Test-CsEffectiveTenantDialPlan
```

Answer Area:



Section:

Explanation:

Reference:

<https://docs.microsoft.com/en-us/microsoftteams/create-and-manage-dial-plans>

QUESTION 41

HOTSPOT

You are deploying Microsoft Teams Calling Plans to three users as shown in the following table.

Name	License	Phone number	Reported issue
User1	Office 365 E3 Microsoft 365 Phone System Microsoft 365 Domestic Calling Plan	Unassigned	There is no dial pad in the Teams client.
User2	Office 365 E5 Microsoft 365 Domestic Calling Plan	Assigned	The user cannot dial four-digit numbers but can dial E.164 numbers.
User3	Office 365 E3 Microsoft 365 Domestic Calling Plan	Assigned	The dial pad in the Teams client recently disappeared.

You need to resolve the issues.

What should you assign to each user? To answer, select the appropriate options in the answer area.

NOTE: Each correct selection is worth one point.

Hot Area:

Answer Area

User1: ▼

- A calling policy
- A dial plan
- A Microsoft 365 Domestic Calling Plan license
- A Microsoft 365 Phone System license
- A phone number
- An OnPremLineURIvalue

User2: ▼

- A calling policy
- A dial plan
- A Microsoft 365 Domestic Calling Plan license
- A Microsoft 365 Phone System license
- A phone number
- An OnPremLineURIvalue

User3: ▼

- A calling policy
- A dial plan
- A Microsoft 365 Domestic Calling Plan license
- A Microsoft 365 Phone System license
- A phone number
- An OnPremLineURIvalue

 Vdumps

Answer Area:

Answer Area

User1:

- A calling policy
- A dial plan
- A Microsoft 365 Domestic Calling Plan license
- A Microsoft 365 Phone System license
- A phone number
- An OnPremLineURIvalue

User2:

- A calling policy
- A dial plan
- A Microsoft 365 Domestic Calling Plan license
- A Microsoft 365 Phone System license
- A phone number
- An OnPremLineURIvalue

User3:

- A calling policy
- A dial plan
- A Microsoft 365 Domestic Calling Plan license
- A Microsoft 365 Phone System license
- A phone number
- An OnPremLineURIvalue

Vdumps

Section:

Explanation:

QUESTION 42

You need to prevent a specific user from calling international phone numbers from within a Microsoft Teams meeting. What should you do?

- A. Assign a domestic-only calling plan to the user.
- B. Assign a tenant dial plan to the user.
- C. Disable Enterprise Voice for the user
- D. Assign a dial-out policy to the user.
- E. Remove Communications Credits from

Correct Answer: D

Section:

Explanation:

Reference:

<https://docs.microsoft.com/en-us/microsoftteams/outbound-calling-restriction-policies>

QUESTION 43

You have a Microsoft Teams Phone deployment.

You have two users that must receive calls for one another. When a call is received by one user, the other user must only receive a visual notification.

What should you use?

- A. a calling policy
- B. call delegation
- C. group call pickup
- D. call park and retrieve
- E. call forwarding

Correct Answer: C

Section:

QUESTION 44

You have a Microsoft Lync Server 2013 deployment.

Some users use Enterprise Voice.

You plan to migrate to Microsoft Teams.

You need to design a migration solution. The solution must minimize the impact on end users during the migration.

What should you include in the solution?

- A. Migrate all users directly from Lync Server 2013 to Teams.
- B. Migrate the Enterprise Voice users from Lync Server 2013 to Microsoft Skype for Business Server 2019, and then migrate the Enterprise Voice users to Teams.
- C. Migrate all other users directly from Lync Server 2013 to Teams.
- D. Perform an in-place upgrade from Lync Server 2013 to Microsoft Skype for Business Server 2015, and then migrate all users to Teams.

Correct Answer: D

Section:

QUESTION 45

Your company uses configuration profiles to manage Microsoft Teams-certified IP phones. The Standard configuration profile is applied to the IP phones.

The help desk receives reports that several user phones fail to lock automatically after the timeout period.

You need to verify whether the configuration profile is applied to the problematic phones.

Solution: From Users in the Microsoft Teams admin center, you locate each affected user and review the settings on the Voice tab.

Does this meet the goal?

- A. Yes
- B. No

Correct Answer: B

Section:

QUESTION 46

Note: This question is part of a series of questions that present the same scenario. Each question in the series contains a unique solution that might meet the stated goals. Some question sets might have more than one correct solution, while others might not have a correct solution.

After you answer a question in this section, you will NOT be able to return to it. As a result, these questions will not appear in the review screen.

Your company uses Microsoft Teams Calling Plans.

The company acquires a small development team. Currently, users on the team have their own direct inward dial (DID) numbers that have PSTN capabilities.

You migrate the users to Teams.

You need to ensure that the users have phone numbers.

Solution: From the Microsoft Teams admin center, you create a new port order.

Does this meet the goal?

A. Yes

B. No

Correct Answer: A

Section:

Explanation:

Reference:

<https://docs.microsoft.com/en-us/microsoftteams/phone-number-calling-plans/transfer-phonenumbers-to-teams>

QUESTION 47

Note: This question is part of a series of questions that present the same scenario. Each question in the series contains a unique solution that might meet the stated goals. Some question sets might have more than one correct solution, while others might not have a correct solution.

After you answer a question in this section, you will NOT be able to return to it. As a result, these questions will not appear in the review screen.

Your company uses Microsoft Teams Calling Plans.

The company acquires a small development team. Currently, users on the team have their own direct inward dial (DID) numbers that have PSTN capabilities.

You migrate the users to Teams.

You need to ensure that the users have phone numbers.

Solution: You run the New-CsHybridTelephoneNumber cmdlet.

Does this meet the goal?

A. Yes

B. No

Correct Answer: B

Section:

QUESTION 48

Note: This question is part of a series of questions that present the same scenario. Each question in the series contains a unique solution that might meet the stated goals. Some question sets might have more than one correct solution, while others might not have a correct solution.

After you answer a question in this section, you will NOT be able to return to it. As a result, these questions will not appear in the review screen.

Your company uses Microsoft Teams Calling Plans.

The company acquires a small development team. Currently, users on the team have their own direct inward dial (DID) numbers that have PSTN capabilities.

You migrate the users to Teams.

You need to ensure that the users have phone numbers.

Solution: From the Microsoft Teams admin center, you place a new order for service numbers.

Does this meet the goal?

A. Yes

B. No

Correct Answer: B

Section:

Explanation:

Reference:

<https://docs.microsoft.com/en-us/microsoftteams/getting-service-phone-numbers>

QUESTION 49

You are selecting devices for use in conference rooms. The conference rooms must support two front of room displays.

Which two types of devices meet the requirements? Each correct answer presents a complete solution.

NOTE: Each correct selection is worth one point.

- A. Microsoft Teams Rooms on Android
- B. Microsoft Teams displays
- C. Microsoft Teams audio conference phones
- D. Microsoft Teams Rooms on Windows
- E. Microsoft Surface Hub 2S

Correct Answer: A, D

Section:

Explanation:

Reference:

<https://docs.microsoft.com/en-us/microsoftteams/rooms/teams-devices-feature-comparison>



QUESTION 50

You are deploying Microsoft Skype for Business 3PIP phones to remote sites for use with Microsoft Teams.

You need to sign each 3PIP phone in to Teams.

What are two possible ways to achieve the goal? Each correct answer presents a complete solution.

NOTE: Each correct selection is worth one point.

- A. From the Microsoft Teams admin center, remotely provision a new device.
- B. From the device, instruct a local user to sign in from a computer that connects to the device by using a USB cable.
- C. From the device, instruct a local user to sign in by using the device itself.
- D. From the device, instruct a local user to use the direct inward dial (DID) number and PIN of the assigned account.
- E. From the device, instruct a local user to sign in from the web.

Correct Answer: C, E

Section:

QUESTION 51

In the Microsoft Call Quality Dashboard, you discover an increasing trend of poor-quality calls.

You need to implement a solution to identify problematic sites.

Which two actions should you perform? Each correct answer presents part of the solution.

NOTE: Each correct selection is worth one point.

- A. Run the CQD User Feedback (Rate My Call) Report.
- B. Create a building data file.

- C. Upload a file to the Tenant Data Upload page.
- D. Upload a file to the Reporting Labels page.
- E. Create an endpoint data file.
- F. Install the Power BI connector for Call Quality Dashboard (CQD).

Correct Answer: B, C

Section:

Explanation:

Reference:

<https://docs.microsoft.com/en-us/microsoftteams/cqd-upload-tenant-building-data>

QUESTION 52

Your company uses a third-party ticketing system.

You need to send an alert to the ticketing system when an IP phone goes offline.

What should you do?

- A. Add a webhook.
- B. Create a live events policy.
- C. Add a channel alert.
- D. Add a configuration profile for the IP phones.

Correct Answer: A

Section:

QUESTION 53

You have a Microsoft Teams Phone deployment.

You deploy a new network site.

You discover that the new site is not listed in location-based reports. Other sites appear in the reports.

You need to ensure that all the sites appear in the reports.

What should you do?

- A. From Network planner in the Microsoft Teams admin center, modify an existing network plan.
- B. From Network planner in the Microsoft Teams admin center, add a new persona.
- C. From the Microsoft Call Quality Dashboard, select Tenant Data Upload and upload a CSV file that contains the new network site only.
- D. From the Microsoft Call Quality Dashboard, select Tenant Data Upload and upload a CSV file that contains all the network sites.
- E. From Network planner in the Microsoft Teams admin center, add a new network plan.

Correct Answer: D

Section:

Explanation:

Reference:

<https://docs.microsoft.com/en-us/microsoftteams/cqd-upload-tenant-building-data>

QUESTION 54

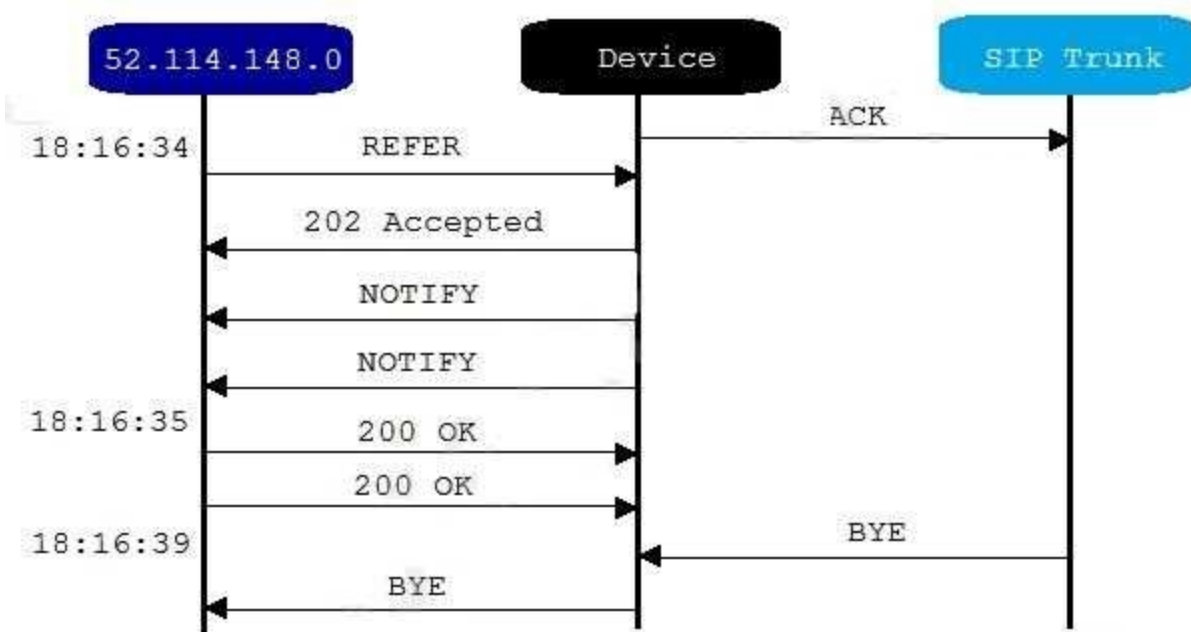
Your company has a Microsoft Teams Phone deployment that uses Direct Routing and a single carrier.

You deploy a new Session Border Controller (SBC) that shows as healthy in the Microsoft Teams admin center.

You place a test call over the new SBC, and the call succeeds.

When you attempt to transfer the call, the transfer fails. A portion of the SIP ladder is shown in the exhibit. (Click the Exhibit tab.)





What is a possible cause of the issue?

- A. The SSL certificate of the SBC is incorrect.
- B. The Refer on the SBC is misconfigured.
- C. notify is enabled in the SIP options of the SBC.
- D. The carrier rejects the format of the forwarded FROM number.

Correct Answer: B

Section:

Explanation:

Reference:

<https://docs.microsoft.com/en-us/microsoftteams/troubleshoot/phone-system/directrouting/issues-with-call-transfers>

QUESTION 55

You have a Microsoft Teams Phone deployment that has 10 offices. Each office has a Session Border Controller (SBC). A user reports that she can make internal calls by using the dial pad, but cannot use the dial pad to make external calls. What is a possible cause of the issue?

- A. The user has the incorrect Teams app setup policy applied.
- B. The user has the incorrect voice routing policy applied.
- C. The user is missing a validated emergency address.
- D. Enterprise Voice is disabled for the user.

Correct Answer: B

Section:

Explanation:

Reference:

<https://docs.microsoft.com/en-us/microsoftteams/manage-voice-routing-policies>

QUESTION 56


You have a Microsoft Teams Phone deployment.



You are deploying Direct Routing.

All users have a SIP URI in the format of user@contoso.com. The Session Border Controller (SBC) is named sbc.voice.contoso.com.

When troubleshooting errors on the SBC, you receive the warning shown in the following exhibit.

 No SIP Options.

The Session Border Controller exists in our database (your administrator created it using the command New-CSOnlinePSTNGateway). It's configured to send SIP options but we never saw SIP options coming back from this SBC.

What is a possible cause of the issue?

- A. The certificate does not match the FQDN on the SBC.
- B. The firewall blocks inbound traffic on port 443 to the SBC.
- C. Only TLS 1.0 is enabled on the SBC.
- D. Microsoft 365 Phone System licenses are not assigned to the users.

Correct Answer: B

Section:

Explanation:

Reference:

<https://docs.microsoft.com/en-us/microsoftteams/troubleshoot/phone-system/direct-routing/sipoptions-tls-certificate-issues>

QUESTION 57

You have Microsoft Teams Phone handsets.

You need to receive an alert when a handset of an executive goes offline.

What should you do in the Microsoft Team admin center?

- A. Create a Teams app setup policy and assign the policy to all executives.
- B. Create a configuration profile for IP phones.
- C. Register the handsets by using remote provisioning.
- D. Modify the device state rule.

Correct Answer: D

Section:

Explanation:

Reference:

<https://docs.microsoft.com/en-us/microsoftteams/alerts/device-health-status>

QUESTION 58

Your company has a Microsoft Teams Phone deployment.

You plan to deploy auto attendants and call queues.

The support desk requires that its auto attendant be able to forward calls after hours to local mobile phone numbers.

You need to identify which licenses to assign to auto-attendant. The solution must minimize costs.

Which two licenses should you identify? Each correct answer presents part of the solution.

NOTE: Each correct selection is worth one point.

- A. Microsoft 365 Phone System
- B. Microsoft 365 Domestic Calling Plan
- C. Microsoft 365 Phone System - Virtual User
- D. Office 365 E3
- E. Microsoft 365 E5
- F. Microsoft 365 Domestic and International Calling Plan

Correct Answer: B, C

Section:

Explanation:

Reference:

<https://docs.microsoft.com/en-us/microsoftteams/plan-auto-attendant-call-queue>

QUESTION 59

You have a Microsoft Teams Phone deployment. Direct Routing is enabled for all users. The users can place and receive PSTN calls.

You need to create a new user policy to provide four-digit extension dialing for users to call analog endpoints that connect to the Session Border Controller (SBC).

Which three actions should you perform? Each correct answer presents part of the solution.

- A. Create a trunk translation rule.
- B. Create an IP phone policy.
- C. Assign a dial plan to the users.
- D. Assign an IP phone policy to the users.
- E. Create a voice normalization rule.
- F. Create a tenant dial plan.

Correct Answer: C, E, F

Section:

Explanation:

Reference:

<https://docs.microsoft.com/en-us/microsoftteams/what-are-dial-plans>

<https://docs.microsoft.com/en-us/microsoftteams/create-and-manage-dial-plans>

QUESTION 60

DRAG DROP

Your company has offices throughout the United States.

The company is opening a new office in Scranton. The office will occupy two floors in the same building.

You need to ensure that if an emergency call is placed, the local emergency dispatchers know from which floor the call came.

How should you complete the PowerShell script? To answer, drag the appropriate values to the correct targets. Each value may be used once, more than once, or not at all. You may need to drag the split bar between panes or scroll to view content.

NOTE: Each correct selection is worth one point.

Select and Place:



Values
New-CsEmergencyNumber
New-CsNetworkSite
New-CsOnlineLisLocation
Set-CsLisLocation
Set-CsNetworkSite
Set-CsOnlineLisLocation

Answer Area

```

-Location "Scranton Office, 1st Floor" -CompanyName "Contoso"
-HouseNumber 1155 -StreetName 22nd -StreetSuffix St -City Scranton
-StateOrProvince PA -CountryOrRegion US -PostalCode 18501 -Description "Scranton" -Elin TEST_ELIN
$Scranton = Get-CsOnlineLisCivicAddress -Description "Scranton"
-CivicAddressId $Scranton.CivicAddressId -Location "Scranton Office, 2nd Floor"

```

Correct Answer:

Values
New-CsEmergencyNumber
New-CsNetworkSite
Set-CsLisLocation
Set-CsNetworkSite

Answer Area

```

New-CsOnlineLisLocation -Location "Scranton Office, 1st Floor" -CompanyName "Contoso"
-HouseNumber 1155 -StreetName 22nd -StreetSuffix St -City Scranton
-StateOrProvince PA -CountryOrRegion US -PostalCode 18501 -Description "Scranton" -Elin TEST_ELIN
$Scranton = Get-CsOnlineLisCivicAddress -Description "Scranton"
Set-CsOnlineLisLocation -CivicAddressId $Scranton.CivicAddressId -Location "Scranton Office, 2nd Floor"

```

Section:

Explanation:

Reference:

<https://docs.microsoft.com/en-us/powershell/module/skype/new-csonlinelolocation?view=skypeps>

<https://docs.microsoft.com/en-us/powershell/module/skype/set-csonlinelolocation?view=skype-ps>

QUESTION 61

The sales department at your company needs to route a call to multiple users and have calls route differently after business hours.

Which two features should you implement? Each correct answer presents part of the solution.

NOTE: Each correct selection is worth one point.

A. auto attendants

- B. caller ID policies
- C. calling policies
- D. call queues
- E. voice routing policies

Correct Answer: A, D

Section:

Explanation:

Reference:

<https://docs.microsoft.com/en-us/microsoftteams/plan-auto-attendant-call-queue>

QUESTION 62

HOTSPOT

You have a Microsoft Teams Phone deployment

You are implementing dynamic emergency calling.

You need to define a network topology for the implementation.

How should you complete the PowerShell script? To answer, select the appropriate options in the answer area.

NOTE: Each correct selection a worth one point

Hot Area:

Answer Area

Answer Area:

Answer Area

Section:

Explanation:

QUESTION 63

DRAG DROP

You have a Microsoft Teams Phone deployment in an office.

When a user dials an emergency number, the safety team for the office is notified.

Your company opens a new office that has a Teams Phone deployment

You need to ensure that the safety team for the new office is notified when an emergency call is placed from that office.

How should you complete the PowerShell script? To answer, drag the appropriate values to the correct targets. Each value may be used once, more than once, or not at all. You may need to drag the split bar between panes or scroll to view content.

NOTE: Each correct selection is worth one point.

Select and Place:

Values

- Grant-CsTeamsEmergencyCallingPolicy
- New-CsOnlineVoiceRoutingPolicy
- New-CsTeamsEmergencyCallingPolicy
- New-CsTeamsEmergencyRoutingPolicy
- Set-CsTenantNetworkSite

Answer Area

```
Value -Identity Site1-ECP -NotificationGroup "security@contoso.com"
-NotificationMode NotificationOnly
Value -Identity "Site1" -EmergencyCallingPolicy "Site1-ECP"
```

Correct Answer:

Values

- New-CsOnlineVoiceRoutingPolicy
- New-CsTeamsEmergencyCallingPolicy
- Set-CsTenantNetworkSite

Answer Area

```
New-CsTeamsEmergencyRoutingPolicy -Identity Site1-ECP -NotificationGroup "security@contoso.com"
-NotificationMode NotificationOnly
Grant-CsTeamsEmergencyCallingPolicy -Identity "Site1" -EmergencyCallingPolicy "Site1-ECP"
```

Section:

Explanation:

QUESTION 64

DRAG DROP

Your company has an on-premises deployment of Microsoft Skype for Business Server 2015 with CU8 that is configured for hybrid connectivity

You are migrating to Microsoft Teams Phone. A Direct Routing trunk is used for PSTN connectivity.

The company requires that phone number assortments be performed in Active Directory.

You plan to create a call queue that will service users both on-premises and in the cloud.

You need to create and assign a resource account for the call queue. The call queue must be able to reach users regardless of which platform they are on.

Which three actions should you perform in sequence? To answer, move the appropriate actions from the list of actions to the answer area and arrange them in the correct order.

Select and Place:

Actions

- From Microsoft Teams PowerShell, run the `Set-CsOnlineApplicationInstance` cmdlet and assign a phone number to the resource account.
- From the Skype for Business Server Management Shell, run the `New-CsHybridApplicationEndpoint` cmdlet and specify the `-LineURI` parameter.
- From Org-wide settings in the Microsoft Teams admin center, select **Resource accounts**, and then select **Add**.
- From the Microsoft 365 admin center, assign a Microsoft 365 Domestic Calling Plan license to the account.
- From the Microsoft 365 admin center, assign a Microsoft 365 Phone System - Virtual User.
- Assign the resource account to the call queue during the call queue setup.

Answer Area

- From the Skype for Business Server Management Shell, run the `New-CsHybridApplicationEndpoint` cmdlet and specify the `-LineURI` parameter.
- From Org-wide settings in the Microsoft Teams admin center, select **Resource accounts**, and then select **Add**.

Correct Answer:

Actions

- From Microsoft Teams PowerShell, run the `Set-CsOnlineApplicationInstance` cmdlet and assign a phone number to the resource account.
- From the Microsoft 365 admin center, assign a Microsoft 365 Domestic Calling Plan license to the account.
- From the Microsoft 365 admin center, assign a Microsoft 365 Phone System - Virtual User.

Answer Area

- From the Skype for Business Server Management Shell, run the `New-CsHybridApplicationEndpoint` cmdlet and specify the `-LineURI` parameter.
- Assign the resource account to the call queue during the call queue setup.
- From Org-wide settings in the Microsoft Teams admin center, select **Resource accounts**, and then select **Add**.



Section:

Explanation:

QUESTION 65

Your company assigns an Office 365 E3 license to each user. All users are in France. You plan to deploy Direct Routing. Which additional license should you assign to the users?

- A. Microsoft 365 Domestic and International Calling Plan
- B. Microsoft Teams Phone Standard - Virtual User
- C. Microsoft 365 Domestic Calling Plan
- D. Microsoft 365 Audio Conferencing
- E. Microsoft Teams Phone Standard

Correct Answer: E

Section:

QUESTION 66

You have a Microsoft Teams Phone deployment. You assign a Microsoft 365 E5 license to a user named User1. You need to enable User1 for Direct Routing. Which PowerShell cmdlet should you run?

- A. `Set-CsCallingLineIdentity`

- B. Set-CsUser
- C. Set-CsOnlineVoiceUser
- D. Set-CsUserServicesPolicy

Correct Answer: A

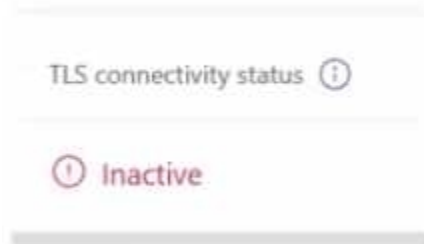
Section:

QUESTION 67

You have a Microsoft Teams Phone deployment.

You are deploying Direct Routing by using a certified Session Border Controller (SBC). The FQDN of the SBC is sbcVcontoso.com. You use signaling port 5067.

You cannot place calls and receive an error message in the Microsoft Teams admin center as shown in the following exhibit.



What is a possible cause of the issue?

- A. Location-Based Routing is enabled for the SBC
- B. The Baltimore root certificate is missing on the SBC.
- C. The Forward P-Asserted Identify (PAI) header is disabled.
- D. The failover timer is set to 0 seconds

Correct Answer: C

Section:

QUESTION 68

Your company has offices in Paris and London.

You are migrating from an on-premises PBX telephony solution to a Microsoft Teams Phone deployment that uses Direct Routing. You plan to use the existing telephony earner. The new solution will provide telephony services to users in both offices.

You need to recommend a solution that is the most resistant to possible failures. The solution must ensure that calls are routed through each user's respective office.

Which two actions should you include in the recommendation? Each correct answer presents part of the solution.

NOTE: Each correct selection is worth one point

- A. Deploy one Session Border Controller (SBC) to each office. Configure the SBCs as a high-availability pair.
- B. Deploy a highly available Session Border Controller (SBC) pair to each office.
- C. Configure voice routing policies for each office.
- D. Configure a single voice routing policy for all users.

Correct Answer: A, C

Section:

QUESTION 69

HOTSPOT

You have a Microsoft Teams Phone deployment that contains a Session Border Controller (SBC named SBCi.contoso.com). Direct Routing integrates with a P6X phone system that uses only four-digit dialing and is configured to use the SBC. Teams is configured to use dial plans that normalize any four-digit calls to E-164. You have the following translation rule.



Hot Area:

Answer Area

-identity 5BC1.contoso.com

- Set-CsHybridPSTNAppliance
- Set-CsHybridPSTNSite
- Set-CsOnlinePSTNGateway
- Set-CsOnlinePSTNUsage

"rule1"

- InboundPstnNumberTranslationRules
- InboundTeamsNumberTranslationRules
- OutboundPstnNumberTranslationRules
- OutboundTeamsNumberTranslationRules

Answer Area:

Answer Area

-identity 5BC1.contoso.com

- Set-CsHybridPSTNAppliance
- Set-CsHybridPSTNSite
- Set-CsOnlinePSTNGateway
- Set-CsOnlinePSTNUsage

"rule1"

- InboundPstnNumberTranslationRules
- InboundTeamsNumberTranslationRules
- OutboundPstnNumberTranslationRules
- OutboundTeamsNumberTranslationRules

Section:

Explanation:

QUESTION 70

You are enabling users for Direct Routing.
You already assigned licenses to the users.
You need to complete the user setup.

Which two cmdlets should you run? Each correct answer presents part of the solution.

NOTE: Each correct selection is worth one point.

- A. Set-CsOnlineVoiceUser
- B. Grant-CsOnlineVoiceRoutinePolicy
- C. Set-CsUser
- D. Grant-CsVoicePolicy
- E. Set-CsUserPstnSettings

Correct Answer: B, C

Section:

QUESTION 71

Exhibit



Phone numbers

To set up calling features for users and services in your organization, you can get new numbers or port existing ones from a service provider. You can assign, unassign, and release phone numbers for people or for services, like audio conferencing, auto attendants, or call queues. [Learn more](#)

✓	Phone number	Number Provider	Location	Number usages ⓘ	Number type ⓘ
<input type="checkbox"/>	+1 234 555 5331	Microsoft	Akron, United States	User	
<input type="checkbox"/>	+1 234 555 5332	Microsoft	Akron, United States	User	
<input type="checkbox"/>	+1 234 555 5333	Microsoft	Akron, United States	User	
<input checked="" type="checkbox"/>	+1 234 555 5334	Microsoft	Akron, United States	User	
<input type="checkbox"/>	+1 234 555 5335	Microsoft	Akron, United States	User	

You are deploying Microsoft Teams Calling Plans.

You port all phone numbers to Microsoft Teams Phone as shown in the exhibit (Click the Exhibit tab.)

You need to assign the number +1-234-555-5334 to an auto attendant.

What should you do first?

- A. Get an auto attendant toll number.
- B. Assign the number to the resource account of the auto attendant.
- C. Open a Microsoft support case to initiate an inventory type change.
- D. Create a port order for a user number.

Correct Answer: D

Section:

QUESTION 72

Your company receives PSTN services in Microsoft Teams through a derived Direct Routing trunk from a telephone carrier.

The carrier becomes an operator in the Operator Connect program.

You need to migrate the users to Operator Connect.

Which three actions should you perform? Each correct answer presents part of the solution.

NOTE: Each correct selection is worth one point.

- A. Run the Set-CsUser cmdlet and set the –OnPremLineURI parameter to \$null.
- B. Run the Grant-CsOnlineVoiceRoutingPolicy cmdlet and set the –Policyname parameter to Policy1.
- C. Run the Grant-CsOnlineVoiceRoutingPolicy cmdlet and set the –Policyname parameter to \$null.
- D. Run the Set-CsOnlineVoiceUser cmdlet and set the –TelephoneNumber parameter to each user's phone number.
- E. Run the Set-CsOnlineVoiceUser cmdlet and set the –TelephoneNumber parameter to \$null.
- F. Run the Set-CsUser cmdlet and set the –OnPremLineURI parameter to each user's phone number.

Correct Answer: A, C, D

Section:

Explanation:

Reference:

<https://docs.microsoft.com/en-us/microsoftteams/operator-connect-configure>

<https://docs.microsoft.com/en-us/microsoftteams/assign-change-or-remove-a-phone-number-for-auser>

QUESTION 73

You are enabling users for Direct Routing.

You already assigned licenses to the users.

You need to complete the user setup.

Which two cmdlets should you run? Each correct answer presents part of the solution.

NOTE: Each correct selection is worth one point.

- A. Grant-CsVoicePolicy
- B. Grant-CsOnlineVoiceRoutingPolicy
- C. Mew-CsVoicePolicy
- D. Mew-CsPhoneNuBberAssignment
- E. Set-CsUserPstnSettings

Correct Answer: A, D

Section:

Explanation:

Reference:

<https://docs.microsoft.com/en-us/microsoftteams/direct-routing-enable-users>

<https://docs.microsoft.com/en-us/microsoftteams/direct-routing-voice-routing>



QUESTION 74

You have a Microsoft Teams Phone deployment.

You need to provide two users with the ability to share a single phone number for inbound and outbound calling.

What are two ways to achieve the goal? Each correct answer presents a complete solution.

NOTE: Each correct selection is worth one point.

- A. call queues
- B. call forwarding
- C. group call pickup
- D. call delegation
- E. call park

Correct Answer: A, C

Section:

Explanation:

Reference:

<https://docs.microsoft.com/en-us/microsoftteams/create-a-phone-system-call-queue>

<https://docs.microsoft.com/en-us/microsoftteams/call-sharing-and-group-call-pickup>

QUESTION 75

You have a Microsoft Teams Phone deployment.

You are designing a room that will be used for collaboration.

You need to select a device for the room. The device must meet the following requirements:

Support video.

Support one-touch join for meetings.

Can start new meetings from within the room.

Support HDMI ingestion of content into Teams.

Which type of device should you select? Each correct answer presents a complete solution.

NOTE: Each correct selection is worth one point.

- A. Microsoft Teams Rooms on Android
- B. Microsoft Teams panels
- C. Microsoft Teams Rooms on Windows
- D. Microsoft Surface Hub 2S.
- E. Microsoft Teams displays.

Correct Answer: A, C

Section:

Explanation:

Reference:

<https://docs.microsoft.com/en-us/microsoftteams/rooms/teams-devices-feature-comparison>

QUESTION 76

You are deploying Microsoft Teams Phone.

You need to provide a user with a device on his desk that can be used when the user's computer is turned off. The device must meet the following requirements:

Support calls.

Support video.

Support speed dial.

Display chat history.

Which type of device should you provide?

- A. Teams-certified handset
- B. Teams display
- C. Teams panel
- D. Teams Rooms

Correct Answer: B

Section:

Explanation:

Reference:

<https://support.microsoft.com/en-us/office/get-started-with-teams-displays-ff299825-7f13-4528-96c2-1d3437e6d4e6>

QUESTION 77

HOTSPOT

You have a Teams Phone deployment that contains an Operator Connect provider in Canada.

You implement a common area phone named lobbyphone1.

You need to configure lobbyphone1 to meet the following requirements:

- Outgoing calls must be placed only from within Canada.

- Dial out during audio conferencing must be restricted.

How should you complete the command? To answer, select the appropriate options in the answer area.

Hot Area:

Answer Area

Grant-CsDialoutPolicy -Identity lobbyphone@contoso.com -PolicyName

Grant-CsDialoutPolicy
 Grant-CsDialoutPolicy
 Grant-CsIPPhonePolicy
 Grant-CsOnlineVoiceRoutingPolicy
 Set-CsOnlineAudioConferencingRoutingPolicy

DialoutCPCZoneAPSTNDisabled
 DialoutCPCandPSTNDomestic
 DialoutCPCZoneAPSTNDisabled
 DialoutCPCZoneAPSTNDomestic
 DialoutCPCDisabledPSTNDomestic

Answer Area:

Answer Area

Grant-CsDialoutPolicy -Identity lobbyphone@contoso.com -PolicyName

Grant-CsDialoutPolicy
 Grant-CsDialoutPolicy
 Grant-CsIPPhonePolicy
 Grant-CsOnlineVoiceRoutingPolicy
 Set-CsOnlineAudioConferencingRoutingPolicy

DialoutCPCZoneAPSTNDisabled
 DialoutCPCandPSTNDomestic
 DialoutCPCZoneAPSTNDisabled
 DialoutCPCZoneAPSTNDomestic
 DialoutCPCDisabledPSTNDomestic

Section:

Explanation:

QUESTION 78

You have a global Teams Phone deployment that has local service numbers from multiple offices. You need to ensure that when the users at an office in Sydney create a Teams meeting invite, the invite displays a local conferencing number by default. What should you do?

- A. Create a new Audio Conferencing policy and assign a local service number from the Sydney office.
- B. Assign a local service number from the Sydney office to a resource account.
- C. Create a new caller ID policy and assign a local service number from the Sydney office.
- D. Modify the global (org-wide default) Audio Conferencing policy and assign a local service number from the Sydney office.

Correct Answer: A

Section:

QUESTION 79

Exhibit

```

AssignedPlan : (MCOEV, MCOProfessional, Teams, TEAMS_ADVCOMMS...)
InterpretedUserType : PureOnlineTeamsOnlyUser
DirSyncEnabled : False
OnPremHostingProvider :
OnPremOptionFlags :
OnPremEnterpriseVoiceEnabled :
OnPremSIPEnabled :
OnPremSipAddress :
OnPremLineURI :
MCOValidationErrorMessage : {}
UserPrincipalName : user1@tailspintoys.com
HostedVoiceMail : True
EnterpriseVoiceEnabled : False
OnPremLineURIManuallySet : False
LineURI :
SipAddress : sip:user1@tailspintoys.com
Enabled : True
VoicePolicy : HybridVoice
TeamsUpgradeEffectiveMode : TeamsOnly
TeamsUpgradeNotificationsEnabled : False
TeamsUpgradePolicy : UpgradeToTeams
HostedVoicemailPolicy : BusinessVoice
OnlineVoiceRoutingPolicy :
HostingProvider : sipfed.online.lync.com
IsBypassValidation : True
IsValid : True

```

Your company has a Microsoft Teams Phone deployment that uses Direct Routing.

A user named User1 reports that she cannot make calls because the dial pad is missing in Teams.

You run the Get-CsOnlineUser cmdlet and receive the output shown in the exhibit (Click the Exhibit tab.) Which three actions should you perform to ensure that the dial pad appears in the Teams client?

Each correct answer presents part of the solution.

NOTE: Each correct selection is worth one point.

- A. Assign a Microsoft Teams Phone Standard license to User1.
- B. Run the Grant-CsOnlineVoiceRoutingPolicy cmdlet
- C. Run the set-csPhoneNumberAssignment cmdlet and specify the -PhoneNumber parameter.
- D. Run the set-CsUser cmdlet and specify the -LineURI parameter.
- E. Run the set-csuser cmdlet and set the -enterprisevoiceenabled parameter to true.

Correct Answer: A, B, C

Section:

QUESTION 80

```

PS C:\> get-csonlineuser -Identity user1@litwareinc.com

DisplayName : User One
EnterpriseVoiceEnabled : True
RegistrarPool : sippoolme1au103.infra.lync.com
OnPremLineURIManuallySet : False
OnPremLineURI :
LineURI : +61370105555
OnlineVoiceRoutingPolicy : VIC-All
DialPlan : AU
TenantDialPlan : Australia-VIC
MCOValidationErrorMessage : {}
VoicePolicy :
InterpretedUserType : HybridOnlineTeamsOnlyUser
UserProvisionType :
TeamsUpgradeEffectiveMode : TeamsOnly

```

You have a Microsoft Teams Phone deployment. The 613 7010 5XXX phone number range is allocated to the Session Border Controller (SBC). A user named User1 is configured as shown in the following exhibit.

User1 reports that when an external caller attempts to call the phone number of User1, the external caller receives an error message.

User1 can make outbound calls, but no caller ID appears.

Which two commands should you run to resolve the issues? Each correct answer presents part of the solution.

NOTE: Each correct selection is worth one point.

A)

```
Remove-CsPhoneNumberAssignment -Identity user1@litwareinc.com -PhoneNumber +61370105555 -PhoneNumberType CallingPlan
```

B)

```
Set-CsPhoneNumberAssignment -Identity user1@litwareinc.com -PhoneNumber +61370105555 -PhoneNumberType DirectRouting
```

C)

```
Set-CsOnlineVoiceUser user1@litwareinc.com -TelephoneNumber "+61370105555"
```

D)

```
Set-CsUser user1@litwareinc.com -EnterpriseVoiceEnabled $false
```

E)

```
Grant-CsOnlineVoiceRoutingPolicy -Identity user1@litwareinc.com -PolicyName $null
```

- A. Option A
- B. Option B
- C. Option C
- D. Option D
- E. Option E

Correct Answer: C, D

Section:

QUESTION 81

You are planning a Microsoft Teams Phone deployment. That will use Direct Routing. You need to allow traffic from Microsoft 365 to a Session Border Controller (SBC). Which IP address ranges should you allow through the firewall?

- A. 52.112.0.0/14 and 52.120.0.0/14
- B. 10.10.0.0/24 and 10.11.0.0/24
- C. 8.8.8.8/32 and 4422/32
- D. 132.245.0.0/16 and 40.104.0.0/15

Correct Answer: A

Section:

QUESTION 82

You have a Teams Phone deployment. The deployment has a single Session Border Controller (SBC) that uses Direct Routing.

Users report that outbound PSTN calls fail.

You need to identify the quantity of specific SBC SIP errors.

What should you review in the Microsoft Teams admin center?

- A. Endpoint Reports in Microsoft Call Quality Dashboard
- B. the network effectiveness ratio on the usage tab for the SBC
- C. the Jitter tab in Network parameters
- D. Quality of Experience Reports in Microsoft Call Quality Dashboard

Correct Answer: A

Section:

QUESTION 83

Your company uses Microsoft Teams Calling Plans.

The company acquires a small development team. Currently, users on the team have their own direct inward dial (DID) numbers that have PSTN capabilities.

You migrate the users to Teams.

You need to ensure that you have phone numbers that you can assign to the users.

Solution: From the Microsoft Teams admin center, you place a new order for user numbers.

Does this meet the goal?

A. Yes

B. No

Correct Answer: B

Section:

QUESTION 84

HOTSPOT

Your company has a Microsoft Teams Phone deployment and the following departments:

* HR

* Marketing

You need to configure Teams to meet the following requirements:

* Only users in the HR department must have spam filtering enabled.

* All outbound PSTN calls must replace the caller ID with the company's auto attendant number.

* Only users in the marketing department must have Inbound calls can be routed to call groups disabled.

What is the minimum number of caller ID policies and calling policies you should configure? To answer, select the appropriate options in the answer area.

NOTE: Each correct selection is worth one point.

Hot Area:

Answer Area

Caller ID policies:

0
1
2

Calling policies:

0
1
2

Answer Area:

Answer Area

Caller ID policies: 2 ▼
0
1
2

Calling policies: 1 ▼
0
1
2

Section:

Explanation:

QUESTION 85

HOTSPOT

You have a Microsoft 365 E5 subscription.

You need to compare the Microsoft 365 E5 subscription with a Microsoft Teams Premium license.

Which feature is included in Microsoft 365 E5, and which feature is exclusive with Teams Premium? To answer, select the appropriate options in the answer area.

NOTE: Each correct selection is worth one point.

Hot Area:

Answer Area



Microsoft 365 E5: End-to-end encryption for one-to-one calls ▼
Add watermarks to meetings
Control who can record
End-to-end encryption for one-to-one calls
Set up a green room for webinar presenters

Teams Premium: Use standard and custom meeting backgrounds at the user level ▼
End-to-end encryption for one-to-one calls
Integrate with Dynamics 365
Set up a green room for webinar presenters
Use standard and custom meeting backgrounds at the user level

Answer Area:

Answer Area

Microsoft 365 E5:
Add watermarks to meetings
Control who can record
End-to-end encryption for one-to-one calls
Set up a green room for webinar presenters

Teams Premium:
End-to-end encryption for one-to-one calls
Integrate with Dynamics 365
Set up a green room for webinar presenters
Use standard and custom meeting backgrounds at the user level

Section:

Explanation:

QUESTION 86

HOTSPOT

Your company has a branch office named Branch1 that has limited network bandwidth. The company has a Microsoft Teams Phone deployment. You need to limit the amount of data the Teams client utilizes when users are in Branch1. How should you complete the command? To answer, select the appropriate options in the answer area. NOTE: Each correct selection is worth one point.



Hot Area:

Answer Area

New-CsTeamsMeetingPolicy
New-CsTeamsMobilityPolicy
New-CsTeamsNetworkRoamingPolicy
New-CsTenantNetworkSite

-Identity "Branch1"

-IPAudioMobileMode \$false
-MaskBits 24
-MediaBitRateKb 2000
-VideoFiltersMode AllFilters

Answer Area:

Answer Area

New-CsTeamsMeetingPolicy
New-CsTeamsMobilityPolicy
New-CsTeamsNetworkRoamingPolicy
New-CsTenantNetworkSite

-Identity "Branch1"

-IPAudioMobileMode \$false
-MaskBits 24
-MediaBitRateKb 2000
-VideoFiltersMode AllFilters

Section:

Explanation:

QUESTION 87

HOTSPOT

You have a Microsoft Teams deployment.

You have two groups that have meeting requirements as shown in the following table.

Name	Requirement
Group1	<ul style="list-style-type: none">• Meeting organizers must be able to enable or disable participant interactions, including audio, video, and polls.• Network Device Interface (NewTek NDI) sources must be configurable.• Attendee registration must be configured and require approval.• Meeting organizers must be able to specify presenters.
Group2	<ul style="list-style-type: none">• External participants must have access.• Up to 1,000 attendees must be supported.• Moderated Q&A capabilities must be supported.• Meeting organizers must be able to specify external presenters.

You need to recommend which type of meeting to use for the groups.

What should you recommend for each group? To answer, select the appropriate options in the answer area.

NOTE: Each correct selection is worth one point.

Hot Area:

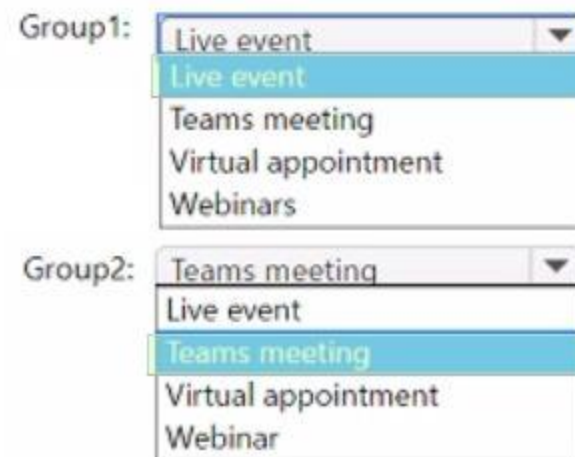
Answer Area

Group1: Live event
Live event
Teams meeting
Virtual appointment
Webinars

Group2: Teams meeting
Live event
Teams meeting
Virtual appointment
Webinar

Answer Area:

Answer Area



Section:

Explanation:

QUESTION 88

You have a Microsoft 365 subscription that uses Microsoft Teams and contains the groups shown in the following table.

Name	Type
Research	Security
Marketing	Distribution

A user named User1 is a member of both Research and Marketing.

You have the meeting policies shown in the following table.

Name	Custom
Global (Org-wide default)	No
Policy1	Yes
Policy2	Yes

You have group policy assignments for the meeting policies as shown in the following table.

Rank	Group	Assigned policy
1	Marketing	Policy2
2	Research	Policy1

Which policies are assigned to User1?

- A. Policy1 only
- B. Policy2 only
- C. Global (Org-wide default) only
- D. Policy1 and Global (Org-wide default)
- E. Policy2 and Global (Org-wide default)

Correct Answer: D

Section:

QUESTION 89



HOTSPOT

You have a Microsoft Teams deployment.

You have two teams that have meeting room requirements as shown in the following table.

Name	Requirement
Human Resources	<ul style="list-style-type: none">• Must support audio, video, and content sharing.• Must support third-party video teleconferencing (VTC) devices.
Marketing	<ul style="list-style-type: none">• Must support coordinated meetings that use Microsoft Surface Hub devices.• Must support Direct Guest Join of third-party conference solutions.

You need to recommend a meeting room solution for the teams.

What should you include in the recommendation for each team? To answer, select the appropriate options in the answer area.

NOTE: Each correct selection is worth one point.

Hot Area:

Answer Area

Human Resources:

Marketing:

Answer Area:

Answer Area

Human Resources:

Marketing:

Section:

Explanation:

QUESTION 90

You are deploying a Teams Rooms on Windows device.

You need to enable public preview for the latest newly released beta features.

What should you do?

- A. Create a new Teams update policy.
- B. Create and then modify an XML file named SkypeSettings.xml.
- C. Create and then modify an XML file named TeamsSettings.xml.
- D. Create a new Team template.

Correct Answer: C

Section:

QUESTION 91

HOTSPOT

You have a Microsoft 365 E5 subscription that uses Microsoft Teams.

You plan to deploy phones to a shared common area.

You need to ensure that users can temporarily sign in to each phone and automatically sign out during inactivity.

How should you complete the PowerShell command? To answer, select the appropriate options in the answer area.

NOTE: Each correct selection is worth one point.

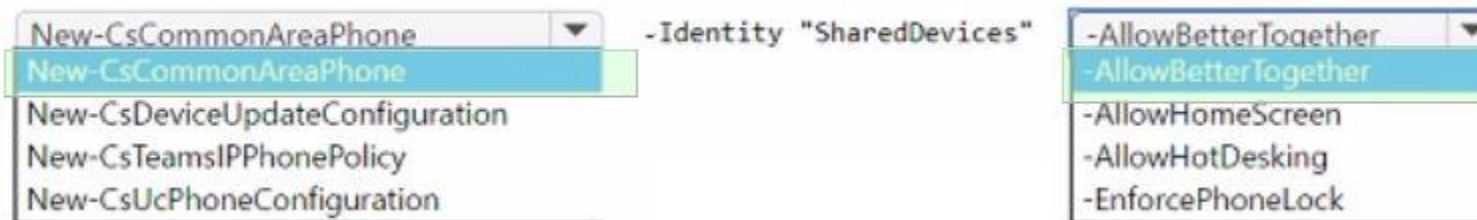
Hot Area:

Answer Area



Answer Area:

Answer Area



Section:

Explanation:

QUESTION 92

You are deploying a Microsoft Teams Rooms on Windows device.

You have a file named Wallpaper.jpg that contains a company-branded wallpaper graphic.

You need to ensure that the device displays the company-branded wallpaper.

Which two actions should you perform? Each correct answer presents part of the solution.

NOTE: Each correct selection is worth one point.

- A. Set the Teams Rooms theme to Custom.

- B. Upload Wallpaper.jpg to the global (Org-wide default) customization policy.
- C. Rename Wallpaper.jpg as Background.jpg.
- D. Set the Teams Rooms theme to Default.
- E. Upload Wallpaper.jpg to a folder on the device.

Correct Answer: A, E

Section:

QUESTION 93

You have a new Microsoft Teams Rooms on Windows deployment.

You need to enable the automatic acceptance of proximity-based meeting invitations.

What should you configure?

- A. front row
- B. a meeting policy
- C. Bluetooth beaconing
- D. coordinated meetings
- E. a customization policy

Correct Answer: B

Section:

QUESTION 94

You have a Microsoft Teams deployment.

You notice that users erroneously create a live event when attempting to create a meeting from the Teams client calendar.

You need to disable live events for all users.

What should you modify from the Microsoft Teams admin center?

- A. Live events settings
- B. live events policies
- C. meeting policies
- D. customization policies

Correct Answer: C

Section:

QUESTION 95

Your company has an office in Adelaide.

The company has a Microsoft Teams Phone deployment.

You acquire a new service number that has the local Adelaide area code.

You need to update the default conferencing toll number for only the users in the Adelaide office.

Which two actions should you perform? Each correct answer presents part of the solution.

NOTE: Each correct selection is worth one point.

- A. Configure a customization policy.
- B. Assign the policy to the Adelaide office users.
- C. Assign the number to a resource account.



- D. Configure an audio conferencing policy.
- E. Modify the Assigned phone number setting for each Adelaide office user.
- F. Modify the global (Org-wide default) audio conferencing policy.

Correct Answer: C, D

Section:

QUESTION 96

HOTSPOT

You have a Microsoft Teams deployment that includes Yammer for live events.

You have two Yammer communities named All Company and Human Resources.

The Yammer Enterprise network is configured as shown in the Network exhibit (Click the Network tab.)

1. Consolidate multiple networks

Congratulations! This Yammer Enterprise network is fully synced with the domains on your Microsoft 365 tenant. There are no further actions needed.

2. Enforce Microsoft 365 identity

Congratulations! This Yammer Enterprise network is enforcing Microsoft 365 identity for your users. There are no further actions needed.

3. Align network for Native Mode

For this Yammer Enterprise network to enter Native Mode and be discoverable through the Security & Compliance Center's eDiscovery capabilities, you must configure this network so that AAD and Microsoft 365 supports all its users, groups, and content. In this step, you will align this network through a series of changes.

Caution: The changes you make in this step are not reversible.

In addition to reviewing the summary details below, we recommend that you download and review the Alignment Report to see which users, groups, and content will be impacted by these changes.

You should also export the data for your Yammer Enterprise network, including all files, before starting this step.

[Generate Alignment Report](#)

[Download Alignment Report](#)

The Security settings are configured as shown in the Security Settings exhibit. (Click the Security Settings tab.)

Network

- Success
- Configuration
- Design
- Admins
- Usage Policy
- External Networks
 - Network Migration
- M365 Native Mode
- New Yammer

Users

- Invite Users
- Invite Guests
- Remove Users
- Block Users
- Bulk Update Users
- Export Users
- Profile Fields

Content and Security

- Monitor Keywords
- Report Conversations
- Security Settings**
- Export Network Data
- Export User Data
- Data Retention
- Content Mode

Security Settings

External Messaging

Allow users in this network to participate in groups or conversations in other networks, and allow external users to participate in groups or conversations in this network.

Allow users in this network to participate in groups or conversations in other networks, but don't allow external users to participate in groups or conversations in this network.

Don't allow users in this network to participate in groups or conversations in other networks, and don't allow external users to participate in groups or conversations in this network.

Office 365 Identity Enforcement

Whenever enforcing Office 365 identity, be mindful that this setting replaces any existing Yammer SSO setup and ensures that users log in to Yammer with their Office 365 accounts. [Learn More](#)

Enforce Office 365 identity

Status: Committed

Block Office 365 users without Yammer licenses

Office 365 Connected Yammer Groups

Once your organization has committed to enforcing Office 365 identity and has one Office 365 tenant associated with a single Yammer network, connected groups will be enabled for this network. [Learn More](#)

Status: Enabled Connected Groups are turned on for this network.

Save

The Human Resources community settings are configured as shown in the Human Resources exhibit. (Click the Human Resources tab.)

Settings ×

Name *

Description

122 characters remaining

Edit settings

Select public or private community

Posting permissions

Only admins can start a conversation in this community. All members can comment and reply to a comment.

Default publisher

[Additional settings \(Classic\)](#)

[Delete this community](#)

For each of the following statements, select Yes if the statement is true. Otherwise, select No.
NOTE: Each correct selection is worth one point

Hot Area:

Answer Area

Statements

Administrators can create a live event in the All Company community.

Yes

No

Only members of the Human Resources community can join a live event hosted by the Human Resources community.

The Human Resources community is created by using a Microsoft 365 group.

Answer Area:

Answer Area

Statements

Administrators can create a live event in the All Company community.

Yes

No

Only members of the Human Resources community can join a live event hosted by the Human Resources community.

The Human Resources community is created by using a Microsoft 365 group.

Section:

Explanation:

QUESTION 97

HOTSPOT

You have a Microsoft 365 E5 subscription that uses Microsoft Teams.

You configure a meeting template as shown in the following exhibit.



Security

Hide Show Lock Unlock

Option	Default value	Visibility	Lock status
Lobby Who can bypass the lobby?	Everyone in my organization and guests	Visible	Locked
People calling in by phone can bypass the lobby	<input type="checkbox"/> Off	Hidden	Unlocked
Enable meeting end-to-end encryption	<input checked="" type="checkbox"/> On	Visible	Locked
Enable watermark for screenshare	<input type="checkbox"/> Off	Visible	Unlocked
Enable watermark for video	<input type="checkbox"/> Off	Visible	Unlocked

Audio and video

Hide Show Lock Unlock

Option	Default value	Visibility	Lock status
Disable mic for attendees? When off, you can unmute individual attendees as needed.	<input checked="" type="checkbox"/> On	Visible	Unlocked
Disable camera for attendees? Meeting attendees can turn on video.	<input checked="" type="checkbox"/> On	Visible	Unlocked

Use the drop-down menus to select the answer choice that completes each statement based on the information presented in the graphic.

NOTE: Each correct selection is worth one point.

Hot Area:

Answer Area

[Answer choice] must wait in the lobby before being admitted to a meeting.

Guests
Guests
Meeting co-organizers
Users from trusted organizations

[Answer choice] allowed to record meetings.

Only meeting organizers are
Everyone is
No one is
Only meeting organizers are

Answer Area:

Answer Area

[Answer choice] must wait in the lobby before being admitted to a meeting.

Guests
Guests
Meeting co-organizers
Users from trusted organizations

Vdumps

[Answer choice] allowed to record meetings.

Only meeting organizers are
Everyone is
No one is
Only meeting organizers are

Section:

Explanation:

QUESTION 98

DRAG DROP

Your company has a Microsoft Teams deployment.

You need to configure meetings to meet the following requirements:

* The company logo must be added to meeting invites.

* Users must be prevented from selecting the webinar meeting template when creating a new meeting from the Teams client.

What should you configure to meet each requirement? To answer, drag the appropriate options to the correct requirements. Each option may be used once, more than once, or not at all. You may need to drag the split bar between panes or scroll to view content.

NOTE: Each correct selection is worth one point.

Select and Place:

Meeting options

Meeting policies

Meeting settings

Meeting template policies

Meeting templates

Answer Area

Add company logo to meeting invites:

Prevent users from selecting the webinar meeting template:

Correct Answer:

Meeting options

Meeting settings

Meeting templates

Answer Area

Add company logo to meeting invites:

Prevent users from selecting the webinar meeting template:

Section:

Explanation:

QUESTION 99

Your network contains an on-premises Active Directory Domain Services (AD DS) domain named contoso.com.

You have a Microsoft 365 E5 subscription.

You are deploying 10 Microsoft Teams Rooms on Windows devices.

You need to join all the devices to contoso.com.

What should you do before you join each device to contoso.com?

- A. Disable Windows Update on each device.
- B. Create a separate organizational unit (OU) in Active Directory and enable No Override for the parent Group Policy Object (GPO) policies.
- C. Create a separate organizational unit (OU) in Active Directory and block Group Policy Object (GPO) policy inheritance.
- D. Modify the authentication settings in the SkypeSettings.xml file of each device.

Correct Answer: C

Section:

QUESTION 100

HOTSPOT

Your company has a Microsoft Teams Phone deployment and the following departments;

* Sales

* Research

You have the users shown in the following table.

The logo for Vdumps.com, featuring a stylized orange 'V' followed by the word 'dumps' in a grey, lowercase, sans-serif font.

Name	Description
User1	Manager in the sales department
User2	Assistant in the sales department
User3	User in the research department
User4	User in the research department
User5	User in the research department

You need to meet the following requirements:

* User2 must be able to receive and make calls on behalf of User1.

* User4 and User5 must not hear a ring tone and must see only a banner in the Teams client when User3 receives a call.

What should you configure to meet each requirement? To answer, select the appropriate options in the answer area.

NOTE: Each correct selection is worth one point.

Hot Area:

Answer Area

User2 must be able to receive and make calls on behalf of User1:

- A call group
- Call delegation
- Call queues
- Operator Connect

User4 and User5 must not hear a ring tone and must see only a banner in the Teams client when User3 receives a call:

- A call group
- Call delegation
- Call queues
- Caller ID policies

Answer Area:

Answer Area

User2 must be able to receive and make calls on behalf of User1:

- A call group
- Call delegation
- Call queues
- Operator Connect

User4 and User5 must not hear a ring tone and must see only a banner in the Teams client when User3 receives a call:

- A call group
- Call delegation
- Call queues
- Caller ID policies

Section:

Explanation:

QUESTION 101

HOTSPOT

You have a Microsoft Teams Phone deployment.

You are deploying Direct Routing with media bypass.

You need to define a Session Border Controller (SBC) in Teams.

How should you complete the command? To answer, select the appropriate options in the answer area.

NOTE: Each correct selection is worth one point.

Hot Area:

	▼	-Identity sbc.contoso.com -Enabled \$true
New-CsOnlinePSTNGateway		
New-CsOnlineVoiceRoute		
New-CsOnlineVoiceRoutingPolicy		
Set-CsOnlinePstnUsage		

	▼	5061 -MaxConcurrentSessions 100 -MediaBypass \$true
-BypassMode		
-CodecPriority		
-FailoverResponseCodes		
-SipSignalingPort		



Answer Area:

	▼	-Identity sbc.contoso.com -Enabled \$true
New-CsOnlinePSTNGateway		
New-CsOnlineVoiceRoute		
New-CsOnlineVoiceRoutingPolicy		
Set-CsOnlinePstnUsage		

	▼	5061 -MaxConcurrentSessions 100 -MediaBypass \$true
-BypassMode		
-CodecPriority		
-FailoverResponseCodes		
-SipSignalingPort		

Section:

Explanation:

Reference:

<https://docs.microsoft.com/en-us/powershell/module/skype/newcsonlinepstngateway?view=skype-ps>

QUESTION 102

Note: This question is part of a series of questions that present the same scenario. Each question in the series contains a unique solution that might meet the stated goals. Some question sets might have more than one correct solution, while others might not have a correct solution.

After you answer a question in this section, you will NOT be able to return to it. As a result, these questions will not appear in the review screen.

You need to create a new call queue to route calls to support agents. The support agents must be able to see their call queue history and the shared transcribed voicemail. The solution must minimize administrative effort.

Solution: You configure the call queue to use a team and a channel.

Does this meet the goal?

A. Yes

B. No

Correct Answer: A

Section:

Explanation:

Reference:

<https://regroove.ca/stellark/2021/09/15/redirect-teams-auto-attendant-voicemail-to-a-channelupdated-method/>

QUESTION 103

Note: This question is part of a series of questions that present the same scenario. Each question in the series contains a unique solution that might meet the stated goals. Some question sets might have more than one correct solution, while others might not have a correct solution.

After you answer a question in this section, you will NOT be able to return to it. As a result, these questions will not appear in the review screen.

You need to create a new call queue to route calls to support agents. The support agents must be able to see their call queue history and the shared transcribed voicemail. The solution must minimize administrative effort.

Solution: You configure group call pickup for the call queue.

Does this meet the goal?

A. Yes

B. No

Correct Answer: B

Section:

Explanation:

Reference:

<https://regroove.ca/stellark/2021/09/15/redirect-teams-auto-attendant-voicemail-to-a-channelupdated-method/>

QUESTION 104

You need to change the meeting entry notifications to play a tone instead of each attendee's recorded name.

What should you configure in the Microsoft Teams admin center?

- A. the Caller ID policies node under Voice
- B. the Meeting settings node under Meetings
- C. the Conference bridges node under Meetings
- D. the Resource accounts node under Org-wide settings
- E. the Meeting policies node under Meetings

Correct Answer: C

Section:

Explanation:

Reference:

<https://docs.microsoft.com/en-us/microsoftteams/turn-on-or-off-entry-and-exit-announcementsfor-meetings-in-teams>

QUESTION 105

Note: This question is part of a series of questions that present the same scenario. Each question in the series contains a unique solution that might meet the stated goals. Some question sets might have more than one correct solution, while others might not have a correct solution.

After you answer a question in this section, you will NOT be able to return to it. As a result, these questions will not appear in the review screen.

Your company uses configuration profiles to manage Microsoft Teams-certified IP phones. The Standard configuration profile is applied to the IP phones.

The help desk receives reports that several user phones fail to lock automatically after the timeout period.

You need to verify whether the configuration profile is applied to the problematic phones.

Solution: From Device in the Microsoft Teams admin center, you select IP Phones, select the Configuration profiles tab, select Standard Phone Policy, and select Assigned devices.

Does this meet the goal?

- A. Yes
- B. No

Correct Answer: B

Section:

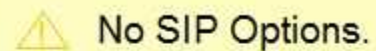
QUESTION 106

You have a Microsoft Teams Phone deployment.

You are deploying Direct Routing.

All users have a SIP URI in the format of user@contoso.com. The Session Border Controller (SBC) is named sbc.voice.contoso.com.

When troubleshooting errors on the SBC, you receive the warning shown in the following exhibit.

A yellow warning box with a triangle icon and the text "No SIP Options."

The Session Border Controller exists in our database (your administrator created it using the command New-CSOnlinePSTNGateway). It's configured to send SIP options but we never saw SIP options coming back from this SBC.

What is a possible cause of the issue?

- A. The firewall blocks outbound traffic on port 443 to Microsoft Teams.
- B. The firewall blocks traffic to the signaling port on the SBC.
- C. TLS 1.2 is enabled on the SBC.
- D. Microsoft 365 Phone System licenses are not assigned to the users.

Correct Answer: B

Section:

Explanation:

Reference:

<https://docs.microsoft.com/en-us/microsoftteams/troubleshoot/phone-system/direct-routing/sipoptions-tls-certificate-issues>

QUESTION 107

You have a Microsoft Teams Phone deployment.
You assign a Microsoft 365 E5 license to a user named User1.
You need to enable User1 for Direct Routing.
Which PowerShell cmdlet should you run?

- A. Set-CsPhoneNuwberAssignment
- B. Set-CsUserServicesPolicy
- C. Set-CsOnlineVoiceUser
- D. Set-CsCallingLineIdentity

Correct Answer: A

Section:

QUESTION 108

Your company has a Microsoft Teams Phone deployment.
The company has a direct inward dial (DID) phone number range of +14035554300 to +14035554329.
Phone numbers +14035554310 to +14035554325 are assigned to Teams users, auto attendants, and call queues.
You need to ensure that when an unassigned number is dialed, the caller is forwarded to a call queue named Reception.
Which three actions should you perform? Each correct answer presents a part of the solution.
NOTE: Each correct selection is worth one point.

- A. From the Microsoft Teams admin center, select Phone numbers, select Numbers, and then select Add.
- B. Add the DID range of +14035554300 to +14035554329 to the phone number range.
- C. Add the DID range of +14035554300 to +14035554309 to the phone number range.
- D. Set Routing options to Person in organization and assign the Reception call queue.
- E. From the Microsoft Teams admin center, select Phone numbers select Routing rules and then select Add a new rule
- F. Set Routing options to Voice application and assign the Reception call queue.



Correct Answer: C, E, F

Section:

QUESTION 109

You have a Microsoft Teams Phone deployment.
You need to ensure that users can enter their emergency address into the Teams client.
Which setting should you configure?

- A. External location lookup mode
- B. Trusted IPs
- C. Optimized device dialing
- D. Location based routing

Correct Answer: A

Section:

QUESTION 110

DRAG DROP

You have a Teams Phone deployment.

You port your company's main phone number from Teams Calling Plans to an Operator Connect provider. Currently, the number is assigned to a resource account named Reception 1. Reception1 is assigned to an auto attendant named Attendan1. You need to reconfigure the phone number to work with Operator Connect. Which three actions should you perform in sequence? To answer, move the appropriate actions from the list of actions to the answer area and arrange them in the correct order.

Select and Place:

Actions	Answer Area
Assign Reception1 to Attendant1.	
Change Number type to Dedicated conference bridge (Toll) .	
Unassign Reception1 from Attendant1.	
Unassign the number from Reception1.	
Change Number type to Operator Connect .	
Assign the number to Reception1.	

Correct Answer:

Actions	Answer Area
Assign Reception1 to Attendant1.	Unassign the number from Reception1.
Change Number type to Dedicated conference bridge (Toll) .	Change Number type to Operator Connect .
Unassign Reception1 from Attendant1.	Assign the number to Reception1.

Section:
Explanation:
Unassign the number from Reception1.
Change Number type to Operator Connect.
Assign the number to Reception1.

QUESTION 111
HOTSPOT
You have a Microsoft Teams Phone deployment. You create a call queue named CQ Marketing. The General info settings are configured as shown in the CQ Marketing exhibit. (Click the CQ Marketing lab.)

- ✓ General info
- ✓ Greeting and music
- ✓ Call answering
- ✓ Agent selection
- ✓ Call overflow handling
- ✓ Call timeout handling

CQ Marketing

Resource accounts

Add or remove resource accounts. You can assign a phone number to a resource account you're adding. ⓘ

+ Add × Remove | 1 item

✓	Resource account	Phone number
	CQ Marketing	

Agents can make outbound calls using the phone numbers on the following resource accounts. ⓘ

+ Add × Remove | 1 item

✓	Resource account	Phone number
	AA Marketing	+1 403 555 4300

Language

The Call answering settings are configured as shown in the Call answering exhibit. (Click the Call answering tab.)

Call queues \ Edit a call queue: CQ Marketing

Call answering

You can choose either a channel, or groups and individual users to answer incoming calls for this call queue.

Choose a team

Choose users and groups

Conference mode

On

Call agents who use the Skype for Business client won't receive calls when conference mode is enabled.

The Agent selection settings are configured as shown in the Agent selection exhibit (Click the Agent selection tab.)

- ✓ General info
- ✓ Greeting and music
- ✓ Call answering
- ✓ **Agent selection**
- ✓ Call overflow handling
- ✓ Call timeout handling

Agent selection

Routing method

- Attendant routing ⓘ
- Serial routing ⓘ
- Round robin ⓘ
- Longest idle ⓘ

Presence-based routing

Off

Call agents can opt out of taking calls

On

Call agent alert time (seconds)

30

For each of the following statements, select Yes if the statement is true. Otherwise, select No.

Hot Area:

Answer Area

Statements

Marketing agents can log in and log out from CQ Marketing.

Yes

No

When a Marketing agent makes an outbound call, its caller ID will be presented automatically as +14035554300.

A Teams administrator can specify which Marketing agent to ring first.

Answer Area:

Answer Area

Statements

Marketing agents can log in and log out from CQ Marketing.

Yes

No

When a Marketing agent makes an outbound call, its caller ID will be presented automatically as +14035554300.

A Teams administrator can specify which Marketing agent to ring first.

Section:

Explanation:

QUESTION 112

You have a Teams Phone deployment.

You have a Survivable Branch Appliance (SBA) that has local PSTN connectivity. The SBA is deployed to a remote site. Which two features require internet connectivity to function? Each correct answer presents a complete solution. NOTE: Each correct selection is worth one point.

- A. emergency calling
- B. Teams-certified phones
- C. media bypass
- D. call queues
- E. call forwarding

Correct Answer: C, E

Section:

QUESTION 113

You have a Microsoft Teams Rooms on Windows device.

You need to configure a content camera that is mounted upside down and points to a whiteboard wall. The camera does not support automatic rotation. The solution must minimize costs.

Which three actions should you perform? Each correct answer presents part of the solution.

NOTE: Each correct selection is worth one point.

- A. From the Peripherals settings for Teams Rooms, select Content enhancements
- B. In a SkypeSettings.xml file, set ContentCameraInverted to false.
- C. From the Peripherals settings for Teams Rooms, clear Content enhancements
- D. Assign a Microsoft Teams Rooms Basic license.
- E. In a SkypeSettings xml file, set ContentCameraInverted to true.
- F. Assign a Microsoft Teams Rooms Pro license.

Correct Answer: A, E, F

Section:

QUESTION 114

You have a Microsoft Teams deployment.

You have the users shown in the following table.

Name	Licensed for
User1	Microsoft 365 E5
User2	Microsoft 365 E3, Microsoft Teams Premium
User3	Microsoft 365 E5, Microsoft Teams Rooms Pro

You need to identify which users meet the following requirements:

- * Can assign watermarks to meetings.
- * Can configure end-to-end meeting encryption.

Which users should you identify?

- A. User1 only
- B. User2only
- C. User3 only
- D. User2 and User3 only
- E. User1.User2. andUser3

Correct Answer: B

Section:

QUESTION 115

DRAG DROP

Your company has a Microsoft Teams deployment and the following departments:

- * Sales
- * Marketing

You need to recommend a licensing strategy that meets the following requirements:

- * The sales department must be able to prevent meeting attendees from copying and pasting in meeting chats.
- * The marketing department must be able to customize meeting templates.
- * The solution must minimize costs.

What should you recommend for each department? To answer, drag the appropriate licenses to the correct departments. Each license may be used once, more than once, or not at all. You may need to drag the split bar between panes or scroll to view content.

NOTE: Each correct selection is worth one point.

Select and Place:



Licenses

Microsoft Teams Essentials

Microsoft Teams Premium

Microsoft Teams Rooms Basic

Answer Area

Marketing:

Sales:

Correct Answer:

Licenses

Microsoft Teams Essentials

Microsoft Teams Premium

Microsoft Teams Rooms Basic

Answer Area

Marketing: Microsoft Teams Premium

Sales: Microsoft Teams Premium

Section:

Explanation:

QUESTION 116

You have a Microsoft Teams deployment.

A user named User1 plans to host a live event.

You create a new meeting policy and set Screen sharing mode to Entire screen

You need to complete the meeting policy configuration to ensure that User1 can host the live event.

Which two settings should you set to On? Each correct answer presents part of the solution.

Note: Each correct selection is worth one point.

- A. Meet now in private meetings
- B. Broadcast production with NDI and SDI hardware
- C. Whiteboard
- D. Private meeting scheduling
- E. Video Conferencing

Correct Answer: D, E

Section:

QUESTION 117

Your company purchases several Microsoft Surface Hub devices for use with Microsoft Teams Rooms You create a provisioning package (.ppkg) to configure certificates, apps, and proxy settings for each Surface Hub. You need to deploy the provisioning package to each Surface Hub.

Solution: Add a provisioning package from the Settings app on the Surface Hub device.

Does this meet the goal?

- A. Yes



B. No

Correct Answer: A

Section:

QUESTION 118

Your company purchases several Microsoft Surface Hub devices for use with Microsoft Teams Rooms. You create a provisioning package (.ppkg) to configure certificates, apps, and proxy settings for each Surface Hub. You need to deploy the provisioning package to each Surface Hub.

Solution: When the Surface Hub displays the Welcome screen, insert a USB flash drive that contains the provisioning package.

Does this meet the goal?

A. Yes

B. No

Correct Answer: A

Section:

QUESTION 119

Your company purchases several Microsoft Surface Hub devices for use with Microsoft Teams Rooms. You create a provisioning package (.ppkg) to configure certificates, apps, and proxy settings for each Surface Hub. You need to deploy the provisioning package to each Surface Hub.

Solution: Modify the Surface Hubs' settings from Teams devices in the Microsoft Teams admin center. Does this meet the goal?

A. Yes

B. No

Correct Answer: B

Section:

QUESTION 120

HOTSPOT

You have a Microsoft 365 E5 subscription and a Microsoft Teams deployment.

You need to recommend a solution for a company-wide meeting. The solution must meet the following requirements:

* Support Microsoft enterprise content delivery network (eCDN).

* Support 500 attendees in a real-time meeting.

* Minimize costs.

Which meeting template should you recommend, and which license should you recommend for the meeting organizer? To answer, select the appropriate options in the answer area.

NOTE: Each correct selection is worth one point.

Hot Area:



Answer Area

Meeting template:

- Live event
- Town hall**
- Virtual appointment
- Webinar

License:

- Audio Conferencing
- Communications Credits
- Teams Premium**
- Teams Rooms Pro

Answer Area:

Answer Area

Meeting template:

- Live event
- Town hall**
- Virtual appointment
- Webinar

License:

- Audio Conferencing
- Communications Credits
- Teams Premium**
- Teams Rooms Pro

Section:

Explanation:

