

Microsoft.PL-900.vMar-2024.by.Bruk.110q

Number: PL-900
Passing Score: 800
Time Limit: 120
File Version: 41.0

Exam Code: PL-900
Exam Name: Microsoft Power Platform Fundamentals



Exam A

QUESTION 1

A company creates canvas apps that use a data source from its sales team.

To meet company device policies, you must determine the available app formats the sales team can select when the sales team creates the canvas.

You need to determine the available app formats.

Which two app formats should you select? Each correct answer presents a complete solution.

NOTE: Each correct selection is worth one point.

- A. Mobile
- B. iOS
- C. Desktop
- D. Tablet
- E. Android

Correct Answer: A, D

Section:

QUESTION 2

HOTSPOT

You create a canvas app by using the Generate from data feature. The app connects to a Microsoft SharePoint list.

For each of the following statements, select Yes if the statement is true. Otherwise, select No.

NOTE: Each correct selection is worth one point.

Hot Area:

Answer Area

Statement	Yes	No
A screen is generated that contains a browsable list of SharePoint list items.	<input type="radio"/>	<input type="radio"/>
A screen is generated that allows users to update SharePoint list items.	<input type="radio"/>	<input type="radio"/>

Answer Area:

Answer Area

Statement	Yes	No
A screen is generated that contains a browsable list of SharePoint list items.	<input checked="" type="radio"/>	<input type="radio"/>
A screen is generated that allows users to update SharePoint list items.	<input checked="" type="radio"/>	<input type="radio"/>

Section:

Explanation:

Reference:

<https://docs.microsoft.com/en-us/powerapps/maker/canvas-apps/app-from-sharepoint>

QUESTION 3

HOTSPOT

A software company plans to use Power Automate.

For each of the following statements, select Yes if the statement is true. Otherwise, select No.

NOTE: Each correct selection is worth one point.

Hot Area:

Statement	Yes	No
You must certify custom connectors before users in other departments within your organization can use the connectors.	<input type="radio"/>	<input type="radio"/>
You must use Microsoft Azure API apps to create a public custom connector.	<input type="radio"/>	<input type="radio"/>

Answer Area:

Vdumps

Answer Area

Statement	Yes	No
You must certify custom connectors before users in other departments within your organization can use the connectors.	<input type="radio"/>	<input checked="" type="radio"/>
You must use Microsoft Azure API apps to create a public custom connector.	<input checked="" type="radio"/>	<input type="radio"/>

Section:

Explanation:

Reference:

<https://docs.microsoft.com/en-us/connectors/custom-connectors/share>

QUESTION 4

HOTSPOT

A company publishes e-books for independent authors.

The company wants to implement a Power Apps portal solution to make announcements about upcoming books to the general public.

You need to recommend features for the company.

Which features should you use? To answer, select the appropriate options in the answer area.

NOTE: Each correct selection is worth one point.

Vdumps

Hot Area:

Answer Area

Requirement

Ensure that book authors can securely access their data.

Ensure consistent page design across the website.

Ensure that the public can access announcements about upcoming books.

Action

	▼
Authenticate external users.	
Access data in Common Data Service.	
Browse content anonymously.	
Customize layouts.	

	▼
Authenticate external users.	
Access data in Common Data Service.	
Use page templates.	
Browse content anonymously.	

	▼
Authenticate external users.	
Use page templates.	
Browse content anonymously.	



Action

	▼
Authenticate external users.	
Access data in Common Data Service.	
Browse content anonymously.	
Customize layouts.	

	▼
Authenticate external users.	
Access data in Common Data Service.	
Use page templates.	
Browse content anonymously.	

	▼
Authenticate external users.	
Use page templates.	
Browse content anonymously.	

Answer Area:

Answer Area

Requirement

Ensure that book authors can securely access their data.

Ensure consistent page design across the website.

Ensure that the public can access announcements about upcoming books.

Section:

Explanation:

Reference:

<https://www.onactuate.com/upgrades/what-is-the-new-powerapps-portal/>

<https://docs.microsoft.com/en-us/powerapps/maker/portals/configure/page-templates>

QUESTION 5

You need to display sales orders greater than a specific threshold in a Power BI report.

What should you use?

- A. filter
- B. Power Query
- C. Common Data Service
- D. connector

Correct Answer: A

Section:

QUESTION 6

You are a sales representative. You create a Power BI report to visualize data from a Microsoft Excel workbook.

Users need to be able to view and share the report.

Which two actions should you perform? Each correct answer presents part of the solution.

NOTE: Each correct selection is worth one point.

- A. Pin the report to a dashboard.
- B. Export the data.
- C. Publish the dashboard.
- D. Share the dashboard.

Correct Answer: A, D

Section:

Explanation:

Reference:

<https://docs.microsoft.com/en-us/power-bi/create-reports/service-dashboard-pin-live-tile-from-report>

<https://docs.microsoft.com/en-us/power-bi/collaborate-share/service-share-dashboards#limitations-and-considerations>

QUESTION 7

HOTSPOT

You are authoring a Power Virtual Agents chatbot for a company.

For each of the following statements, select Yes if the statement is true. Otherwise, select No.

NOTE: Each correct selection is worth one point.

Hot Area:



Answer Area

Statements	Yes	No
You must create a custom action to display a knowledge base article that answers a common support question.	<input type="radio"/>	<input type="radio"/>
You can use Power Automate to retrieve a customer's contact number in order to verify they are an authorized user and their support plan SLA.	<input type="radio"/>	<input type="radio"/>

Answer Area:

Answer Area

Statements	Yes	No
You must create a custom action to display a knowledge base article that answers a common support question.	<input type="radio"/>	<input checked="" type="radio"/>
You can use Power Automate to retrieve a customer's contact number in order to verify they are an authorized user and their support plan SLA.	<input checked="" type="radio"/>	<input type="radio"/>



Section:

Explanation:

Reference:

<https://docs.microsoft.com/en-us/azure/cognitive-services/qnamaker/tutorials/integrate-with-power-virtual-assistant-fallback-topic>

<https://docs.microsoft.com/en-us/power-virtual-agents/advanced-flow>

QUESTION 8

HOTSPOT

You are authoring a Power Virtual Agents bot for a company that sells flowers and shrubs.

For each of the following statements, select Yes if the statement is true. Otherwise, select No.

NOTE: Each correct selection is worth one point.

Hot Area:

Answer Area

Statement	Yes	No
You can use the prebuilt Postal Code entity to recommend plants that will work within a customer's growing zone.	<input type="radio"/>	<input type="radio"/>
You can create a custom entity to offer color and plant choices for landscaping options that can be made available for customer orders.	<input type="radio"/>	<input type="radio"/>

Answer Area:

Answer Area

Statement	Yes	No
You can use the prebuilt Postal Code entity to recommend plants that will work within a customer's growing zone.	<input checked="" type="radio"/>	<input type="radio"/>
You can create a custom entity to offer color and plant choices for landscaping options that can be made available for customer orders.	<input checked="" type="radio"/>	<input type="radio"/>

Section:

Explanation:

Box 1: Yes

Chatbots built with Power Virtual Agents will understand and display content that's locally relevant to the user. Localized handling and formatting are based on the user's browser locale setting, and include the following elements within a chat conversation:

Date and time

Numbers

ZIP or postal code

Currency

Speed

Box 2: Yes

Custom entities:

The prebuilt entities cover commonly used information types, but on some occasions, such as when building a bot that serves a specific purpose, you'll need to teach the bot's language understanding model some domain-specific knowledge. For instance, let's say you want to build a bot for an outdoor store. In this case, you'll need to teach the bot to acknowledge the "outdoor gears product" category in a dialog.

Reference: <https://docs.microsoft.com/en-us/power-virtual-agents/data-location> <https://docs.microsoft.com/en-us/powervirtual-agents/advanced-entities-slot-filling>

QUESTION 9

HOTSPOT

You are authoring a Power Virtual Agents chatbot for a company.

For each of the following statements, select Yes if the statement is true. Otherwise, select No.

NOTE: Each correct selection is worth one point.

Hot Area:

Answer Area	
Statement	
When escalating to a live person from a chatbot, the customer must restate their issue and other information collected.	<input type="radio"/> Yes <input type="radio"/> No
You can customize the greeting topic for every chatbot that you author.	<input type="radio"/> Yes <input type="radio"/> No

Answer Area:

Answer Area	
Statement	
When escalating to a live person from a chatbot, the customer must restate their issue and other information collected.	<input type="radio"/> Yes <input checked="" type="radio"/> No
You can customize the greeting topic for every chatbot that you author.	<input checked="" type="radio"/> Yes <input type="radio"/> No



Section:

Explanation:

Box 1: No

With Power Virtual Agents, you can hand off conversations to live agents seamlessly and contextually. When you hand off a conversation, you share the full history of the conversation (the context) as well as all user-defined variables. Having access to this context means live agents that are using any connected engagement hub can be notified that a conversation requires a live agent, see the context of the prior conversation, and resume the conversation. Box 2: Yes

By default, chatbots created with Power Virtual Agents and published to a website will load without a greeting, and will passively wait for the user to start the conversation.

However, you can use custom CSS and JavaScript code to automatically have the bot start the conversation when the bot loads.

Reference: <https://docs.microsoft.com/en-us/power-virtual-agents/advanced-hand-off> <https://docs.microsoft.com/en-us/power-virtual-agents/configure-bot-greeting>

QUESTION 10

HOTSPOT

You are creating a Power Apps app. You want to ensure that the app can be used by individuals who have a vision impairment. For each of the following statements, select Yes if the statement is true. Otherwise, select No.

NOTE: Each correct selection is worth one point.

Hot Area:

Answer Area	Statement	Yes	No
	Power Apps can use a screen reader without the need for a connector.	<input type="radio"/>	<input type="radio"/>
	You can use an accessibility checker for Power Apps apps to check for accessibility violations and provide user interface tips.	<input type="radio"/>	<input type="radio"/>

Answer Area:

Answer Area	Statement	Yes	No
	Power Apps can use a screen reader without the need for a connector.	<input type="radio"/>	<input checked="" type="radio"/>
	You can use an accessibility checker for Power Apps apps to check for accessibility violations and provide user interface tips.	<input checked="" type="radio"/>	<input type="radio"/>

Section:

Explanation:

Box 1: No

The following software combinations are the supported recommendations for consuming PowerApps with a screen reader:

Windows: Microsoft Edge / Narrator macOS: Safari / VoiceOver Android: PowerApps app / Talkback iOS: PowerApps app / VoiceOver

Box 2: Yes

Users who have vision, hearing, or other impairments can use your canvas app more easily and successfully if you consider accessibility as you design how the app looks and behaves. If you're not sure how to make your app more accessible, you can run the Accessibility checker in PowerApps Studio. This tool not only finds potential accessibility issues but also explains why each might be a potential problem for users who have a specific disability and offers suggestions on how to resolve each issue. The Accessibility checker detects screen-reader and keyboard issues for you, and you can find information about how to fix color-contrast issues by using accessible colors.

Reference: <https://docs.microsoft.com/en-us/powerapps/user/screen-reader> <https://docs.microsoft.com/en-us/powerapps/maker/canvas-apps/accessibility-checker>

QUESTION 11

HOTSPOT

A company plans to implement Power Platform solutions.

For each of the following statements, select Yes if the statement is true. Otherwise, select No.

NOTE: Each correct selection is worth one point.

Hot Area:

Answer Area

	Yes	No
Users can interact with canvas apps directly in Microsoft SharePoint and Teams.	<input type="radio"/>	<input type="radio"/>
Users can interact with model-driven apps directly in Microsoft SharePoint and Teams.	<input type="radio"/>	<input type="radio"/>

Answer Area:

Answer Area

	Yes	No
Users can interact with canvas apps directly in Microsoft SharePoint and Teams.	<input checked="" type="radio"/>	<input type="radio"/>
Users can interact with model-driven apps directly in Microsoft SharePoint and Teams.	<input type="radio"/>	<input checked="" type="radio"/>

Section:

Explanation:

QUESTION 12

HOTSPOT

A company uses Microsoft Dataverse to manage business data.

You need to import data into Dataverse from other data sources by using dataflows.

For each of the following statement, select Yes if the statement is true. Otherwise, select No.

NOTE: Each correct selection is worth one point.



Hot Area:

Answer Area

Statements	Yes	No
You can access data sources in a dataflow by using the connectors that are used with Power Automate.	<input type="radio"/>	<input type="radio"/>
You can use Power Query to shape and transform the data in a dataflow.	<input type="radio"/>	<input type="radio"/>
You can run dataflows on a schedule to refresh the data in Dataverse.	<input type="radio"/>	<input type="radio"/>

Answer Area:

Answer Area

Statements

You can access data sources in a dataflow by using the connectors that are used with Power Automate.

Yes

No

You can use Power Query to shape and transform the data in a dataflow.

You can run dataflows on a schedule to refresh the data in Dataverse.

Section:

Explanation:

QUESTION 13

Customer-facing applications must comply with Global Data Protection Regulations (GDPR) regulations.. You need to recommend actions to help ensure GDPR compliance. Which two features should the company use? Each correct answer presents part of the solution.

NOTE: Each correct selection is worth one point.

- A. Force a user to update security questions after a specific amount of time.
- B. Prompt a user for consent to use their personal data and record the date consented.
- C. Block users who are identified as minors.
- D. Automatically deactivate a user who has not used the portal in six months.

Correct Answer: B, C

Section:

Explanation:

Reference:

https://en.wikipedia.org/wiki/General_Data_Protection_Regulation

QUESTION 14

You have a Microsoft Excel workbook that contains a list of tasks for a project. You store the file in OneDrive for Business. You need to create a canvas app that allows team members to update the status of their tasks.

What should you use?

- A. the Generate an app from data feature
- B. a custom action in Common Data Service
- C. Power Apps Checker
- D. the Open entity data in Excel feature

Correct Answer: A

Section:

Explanation:

Reference:

<https://docs.microsoft.com/en-us/powerapps/maker/canvas-apps/add-data-connection>

QUESTION 15



A company has a Power Apps app that is used by most employees. The company is expanding to other countries/regions. You need to recommend a solution to translate text generated within the Power Apps app in near real-time. What should you recommend?

- A. Microsoft Azure Synapse Analytics
- B. Microsoft Azure Cognitive Services
- C. Common Data Service connector
- D. Power BI

Correct Answer: A, C

Section:

Explanation:

Reference:

https://docs.microsoft.com/en-gb/azure/cognitive-services/welcome?ocid=AID2339762_TWITTER_oo_spl100000827964250

<https://powerapps.microsoft.com/en-us/blog/cognitive-services-with-powerapps-using-custom-connectors/>

QUESTION 16

A company plans to create a canvas app that connects to three databases with different proprietary database formats. What is the minimum number of connectors required?

- A. 0
- B. 1
- C. 2
- D. 3

Correct Answer: B

Section:

Explanation:

Reference:

<https://docs.microsoft.com/en-us/powerapps/maker/canvas-apps/working-with-data-sources>



QUESTION 17

You plan to use Power Automate to perform data-management tasks when users interact with data in the common data model. Which three types of events can generate a trigger for the tasks? Each correct answer presents a complete solution.

NOTE: Each correct selection is worth one point.

- A. when a record is displayed in a view
- B. when a record is deleted
- C. when a record is created
- D. when a record is updated
- E. when a record is read

Correct Answer: B, C, D

Section:

Explanation:

Triggers like When a record is created, When a record is updated, and When a record is deleted initiate your flow within a few minutes of the event occurring. In rare cases, your flow can take up to 2 hours to trigger.

Reference:

<https://docs.microsoft.com/en-us/power-automate/connection-dynamics365>

QUESTION 18

You create a Power Apps app and Power Automate flow.

You need to combine multiple types of field values into a single string value and format the string. What should you use?

- A. switch
- B. environment variable
- C. expression
- D. condition

Correct Answer: C

Section:

QUESTION 19

HOTSPOT

A company plans to implement Power Apps.

For each of the following statements, select Yes if the statement is true. Otherwise, select No.

NOTE: Each correct selection is worth one point.

Hot Area:

Answer Area

Statement

Building Power Apps apps requires proficiency in JavaScript programming.

Yes

No

You must select one of the app templates to create an app.

Answer Area:

Answer Area

Statement

Building Power Apps apps requires proficiency in JavaScript programming.

Yes

No

You must select one of the app templates to create an app.

Section:

Explanation:

Reference:

<https://docs.microsoft.com/en-us/powerapps/maker/>

QUESTION 20

HOTSPOT

You are creating a Power Virtual Agents chatbot for a company.

Which component types should you use for each scenario? To answer, select the appropriate options in the answer area.

NOTE: Each correct selection is worth one point.

Hot Area:

Answer Area

Scenario

The chatbot needs to capture of the user id for authentication.

Component type

	▼
Topic	
Entity	
Action	

A customer asks a question that needs to be handed off to a live Customer Support representative.

	▼
Topic	
Entity	
Action	



Answer Area:

Answer Area

Scenario

The chatbot needs to capture of the user id for authentication.

Component type

	▼
Topic	
Entity	
Action	

A customer asks a question that needs to be handed off to a live Customer Support representative.

	▼
Topic	
Entity	
Action	

Section:

Explanation:

Reference:

<https://docs.microsoft.com/en-us/power-virtual-agents/fundamentals-what-is-power-virtual-agents>

<https://www.c-sharpcorner.com/article/get-started-with-bot-development-with-microsoft-power-virtual-agent-step-by-st/>

QUESTION 21

HOTSPOT

A company is evaluating ways to connect Power Platform apps to external services to perform complex activities.

For each of the following statements, select Yes if the statement is true. Otherwise, select No.

NOTE: Each correct selection is worth one point.

Hot Area:

Answer Area

Statements	Yes	No
You can create a canvas app that scans and parses documents using Azure Cognitive Services and then adds the appropriate information to Dynamics 365 Sales.	<input type="radio"/>	<input type="radio"/>
You can create a canvas app that uses Azure Cognitive Services to read incident records and identify tickets that need to be escalated based on sentiment score.	<input type="radio"/>	<input type="radio"/>

Answer Area:

Answer Area



Statements	Yes	No
You can create a canvas app that scans and parses documents using Azure Cognitive Services and then adds the appropriate information to Dynamics 365 Sales.	<input checked="" type="radio"/>	<input type="radio"/>
You can create a canvas app that uses Azure Cognitive Services to read incident records and identify tickets that need to be escalated based on sentiment score.	<input checked="" type="radio"/>	<input type="radio"/>

Section:

Explanation:

Reference:

<https://docs.microsoft.com/en-us/azure/cognitive-services/cognitive-services-and-machine-learning>

QUESTION 22

HOTSPOT

You are a retail director for a large clothing company. Each week you use the corporate YouTube channel to create a video that highlights new initiatives, and goals for retail operations.

You need to design a Power Apps app that streams the videos to internal users.

Which objects should you use? To answer, select the appropriate options in the answer area.
NOTE: Each correct selection is worth one point.

Hot Area:
Answer Area

Action

Option

Implement the Power Apps app.

	▼
Canvas	
Model-driven	
Portal	

Use drag and drop to add a video to the app.

	▼
View	
Connector	
Control	

Apply consistent company colors to the app.

	▼
Unified Interface	
Control	
Theme	
Template	



Answer Area:

Answer Area

Action	Option
Implement the Power Apps app.	<input type="text"/> Canvas Model-driven Portal
Use drag and drop to add a video to the app.	<input type="text"/> View Connector Control
Apply consistent company colors to the app.	<input type="text"/> Unified Interface Control Theme Template



Section:

Explanation:

Reference:

<https://powerapps.microsoft.com/en-us/blog/microsoft-stream-videos-and-channels-in-canvas-apps/>

<https://docs.microsoft.com/en-us/powerapps/maker/model-driven-apps/create-themes-organization-branding> <https://docs.microsoft.com/en-us/powerapps/maker/canvas-apps/controls/control-stream-video>

QUESTION 23

A toy company creates a text classification model in AI Builder to monitor customer feedback for specific key words. When negative feedback is received for a toy, the company wants to proactively perform engineering reviews for the toy and schedule additional training sessions for workers who produce the toy. What are two possible ways to achieve the goal? Each correct answer presents a complete solution.

NOTE: Each correct selection is worth one point.

- A. Create a canvas app.
- B. Implement the Virtual Agent.
- C. Build a Power Automate flow.
- D. Use the Common Data Model.

Correct Answer: A, C

Section:

Explanation:

A (not D): AI Builder comes with:

A ready-to-use business card reader available in canvas as well as in model-driven apps.

Business card reader (Canvas)

Business card reader (Model-driven)

Additional canvas components to leverage your AI Builder form processing or object detection models canvas apps. C: Use the results from your AI model across Power Platform to create end-to-end solutions that meet your

business needs, even if you have no coding skills. For example, create a flow that automates document processing in Power Automate, or an app created with PowerApps that predicts whether a supplier will be out of compliance.

Reference:

<https://docs.microsoft.com/en-us/ai-builder/use-in-powerapps-overview>

QUESTION 24

A company is evaluating ways that they can implement AI Builder.

For which two scenarios can you use AI Builder? Each correct selection presents a complete solution.

NOTE: Each correct selection is worth one point.

- A. Send emails to all ai users who subscribe to a service.
- B. Synchronize data from an external database.
- C. Collect data from several data sources and display a dashboard that shows trending data.
- D. Interpret images and perform an action based on the image.
- E. Detect patterns in data and predict outcomes

Correct Answer: D, E

Section:

Explanation:

Reference:

<https://powerapps.microsoft.com/en-us/blog/introducing-ai-builder-for-powerplatform/>

QUESTION 25

A company plans to use AI Builder to help improve business performance.

You need to determine which AI Models are available for use.

Which three types of models can you use? Each correct answer presents a complete solution.

NOTE: Each correct selection is worth one point.

- A. linear regression
- B. prediction
- C. object detection
- D. anomaly detection
- E. text classification

Correct Answer: B, C, E

Section:

Explanation:

Reference:

<https://docs.microsoft.com/en-us/ai-builder/model-types>

QUESTION 26

A company uses Microsoft 365 and Dynamics 365 Sales. The company does not have any developers on its staff. You need to explain to the executives the benefits of using Power Platform apps.

What are two benefits? Each correct answer presents a complete solution.

NOTE: Each correct selection is worth one point.

- A. Users can send emails from Dynamics 365 Sales to their personal email addresses.
- B. Users can create Power Apps to create apps for different departments.
- C. Users can use Power Automate to share information between Microsoft 365 and Dynamics 365 Sales.



D. The company can unify all the mobile devices to one vendor.

Correct Answer: B, C

Section:

QUESTION 27

A company manages a chain of retail stores. The company stores a list of retail store names and numbers in one Power BI table. The company stores sales transaction data including a transaction ID in another table. The transaction ID includes the store number.

You need to show the store name for all retail transactions in all Power BI reports.

Which tool should you use?

- A. Query Editor
- B. Power BI Service
- C. Microsoft Excel
- D. Data Connector

Correct Answer: A

Section:

Explanation:

Power BI Desktop comes with Query Editor, where you can connect to one or many data sources, shape and transform the data to meet your needs, then load that model into Power BI Desktop.

Reference:

<https://docs.microsoft.com/en-us/power-bi/desktop-query-overview>

QUESTION 28

You create a Power BI dashboard that displays data from Dynamics 365 Customer Engagement. You need to share the Power BI dashboard with coworkers. What are three possible ways to achieve the goal? Each correct answer presents a complete solution.

NOTE: Each correct selection is worth one point.

- A. Create a Power BI workspace and grant coworkers permissions.
- B. Publish the dashboard as an app to your coworkers.
- C. Export the data into Common Data Service for others to manipulate in Power BI.
- D. Export the data to Microsoft Excel for coworkers to import and view in Power BI.
- E. Embed reports in your company's internal web portal.

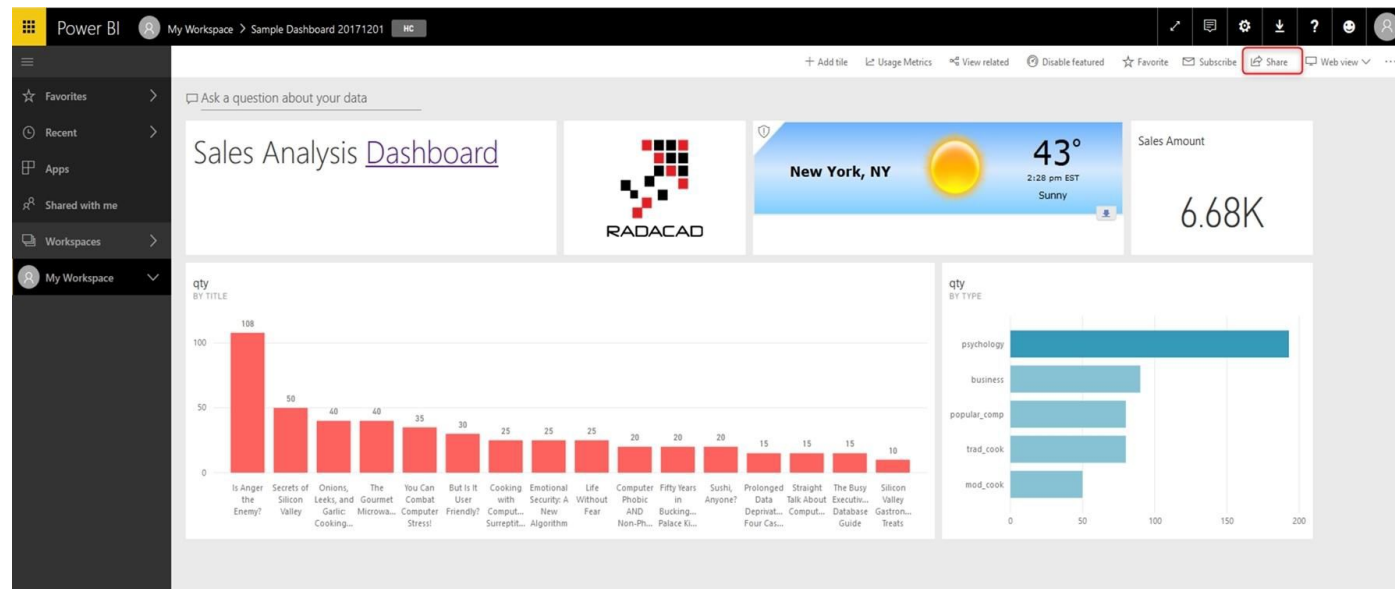
Correct Answer: A, B, E

Section:

Explanation:

A: Basic Sharing for Dashboards and Reports through a workspace is the most common way of sharing the Power BI content. Basic Sharing is very simple and easy to use method. You can simply click on the Share button in the dashboard or report, and then share it with other users.





B: Apps are great sharing method for multiple environment, and best way of sharing for users in production environment.

Power BI App is the solution for multiple environment approach. With Power BI App, your development environment (workspace), and user environment (App) are isolated from each other.

Note: If you are using SharePoint online as a portal for document management and some other reasons already, then consider using Embed in SharePoint Online feature of Power BI reports. This method is secure and you can share the report only with Power BI users you want.

E: Sometimes, you don't need a secure way of sharing, you may search for an easy and free way of sharing, and your content is not confidential or sensitive. Publish to web is your friend in such situation. This is the only free way of sharing in Power BI, but be aware that this method is not secure.

Publish to web method, gives you an embed code, which you can use in any web pages to embed the Power BI report in it

Reference:

<https://radacad.com/power-bi-sharing-methods-comparison-all-in-one-review>

QUESTION 29

Your company has an on premises Microsoft SQL Server database that contains legacy sales data. You must display information from the database in a new Power Apps app. You need to establish a secure connection between the database and the app.

What should you use?

- A. Data source
- B. App
- C. Data gateway
- D. Power Automate

Correct Answer: C

Section:

Explanation:

For an on-premises database, identify a data gateway that was shared with you (or create one).

Specify Connect using on-premises data gateway, type or paste the server name, the database name, the user name, and the password for the database that you want to use, and specify the authentication type and the gateway.

Reference:

<https://docs.microsoft.com/en-us/powerapps/maker/canvas-apps/connections/connection-azure-sqldatabase>

QUESTION 30

A recent update has been made to a canvas app.

The update causes a negative impact to users. to users.

You need to roll back the app to a previous version.

What should you do?

- A. Restore the previous version of the app.
- B. Uninstall the app for all users and reinstall by using the package from a previous version..
- C. Deactivate the live app, import the previous version of the app, and then activate the app.
- D. Delete the app and create a new app based on the previous version.

Correct Answer: A

Section:

Explanation:

Restore a canvas app to a previous version in PowerApps.

Restore an app from your account

1. Open powerapps.com, and then click or tap Apps in the left navigation bar.
2. Near the right edge, click or tap the info icon for the app that you want to restore.
3. Click or tap the Versions tab, and then click or tap Restore for the version that you want to restore.
4. In the confirmation dialog box, click or tap Restore.A new version is added to your list.

Reference: <https://docs.microsoft.com/en-us/powerapps/maker/canvas-apps/restore-an-app>

QUESTION 31

What is a benefit of deploying Microsoft 365 and Dynamics 365 apps in the same tenant?

- A. You do not need to manually back up data.
- B. Both will use the same time zone.
- C. You can use Power BI to display data that comes from both environments.
- D. You can implement Single Sign-On (SSO).

Correct Answer: C

Section:

Explanation:

Reference:

<https://docs.microsoft.com/en-us/power-platform/admin/use-power-bi>

QUESTION 32

A company runs a call center to handle customer support inquiries.

The company tracks metrics including the number of incoming calls and call resolution rates. The company wants to display the metrics on a shared screen that is visible to all call center staff.

You need to recommend a visualization solution for the company.

Which Power Platform feature should you recommend?

- A. AI Builder
- B. Power Automate
- C. Power Apps
- D. Power BI

Correct Answer: D

Section:

QUESTION 33

You are creating Power BI reports.

You need to choose which filters you can use for reports.

Which three types of filters can you use? Each correct answer presents a complete solution.



NOTE: Each correct selection is worth one point.

- A. drill-down
- B. automatic
- C. database
- D. manual
- E. external

Correct Answer: A, B, D

Section:

Explanation:

Reference:

<https://docs.microsoft.com/en-us/power-bi/power-bi-report-filter-types>

QUESTION 34

A manufacturing company uses Internet of Things (IoT) devices to monitor the temperature in different parts of their warehouse. The current IoT monitoring software is extremely outdated and is not user friendly. You need to view near-real time information from the IoT devices in Power BI Service dashboards.

Which tool should you use?

- A. Scheduled refresh dataset
- B. Streaming dataset
- C. Content Pack dataset
- D. Power BI dataflows
- E. Quick Insights

Correct Answer: B

Section:

Explanation:

Reference: <https://docs.microsoft.com/en-us/power-bi/service-real-time-streaming> <https://powerbi.microsoft.com/en-us/blog/using-power-bi-real-time-dashboards-to-display-iot-sensor-data-a-step-by-step-tutorial/>

QUESTION 35

This question requires that you evaluate the underlined text to determine if it is correct.

You have a Power BI report with a page named RevReceived. The page shows gross revenue received by your company. You want to create an almost identical page that shows net revenue instead of gross revenue. To accomplish this task, you modify the RevReceived page.

Review the underlined text. If it makes the statement correct, "No change is needed". If the statement is incorrect, select the answer choice that makes the statement correct.

- A. No change is needed.
- B. duplicate the RevReceived page and update the duplicate copy.
- C. import the RevReceived page.
- D. copy the visuals from RevReceived to a new page.

Correct Answer: B

Section:

Explanation:

Reference: https://www.tutorialspoint.com/power_bi/power_bi_quick_guide.htm

QUESTION 36



You create a set of dashboards and reports for a project team that combines data from different sources in Power BI. Some of the data is considered sensitive. You need to distribute the dashboards and reports securely to the team.

What should you create?

- A. a custom data connector
- B. a published app
- C. a Microsoft flow
- D. a Power BI workspace

Correct Answer: B

Section:

Explanation:

Reference:

<https://docs.microsoft.com/en-us/power-bi/service-how-to-collaborate-distribute-dashboards-reports>

QUESTION 37

You are using Dynamics 365 Sales.

You need to pull data into a Power BI report for your team. The City and State columns must be combined to form one column on the report. Which function would you use? Each correct answer presents a complete solution.

NOTE: Each correct selection is worth one point.

- A. Use Power Query to merge columns.
- B. Import the data.
- C. Export data to Microsoft Excel.
- D. Create a view.

Correct Answer: A

Section:

Explanation:

Reference: <https://docs.microsoft.com/en-us/power-bi/desktop-shape-and-combine-data>

QUESTION 38

Users within a company use Flow for personal productivity.

Users often overwrite their working flows by editing the definitions and are unable to undo changes after saving a flow. You need to ensure that users can revert a flow to the current state.

Which two options can you use? Each correct answer presents a complete solution.

NOTE: Each correct selection is worth one point.

- A. Export
- B. Rename
- C. Save As
- D. Share

Correct Answer: A, C

Section:

Explanation:

A: You can export a flow as a package and import it into a different environment, or use it to restore the in the same environment at a later point in time. C: The ability to make a copy of your flow is often useful when you want to create a flow similar to something you've already created. Or, if you want to maintain a draft of your working flow as you work on adding more functionality. Here's how:

Go to your My flows page. Click on the More (...) menu item next to the flow that you want to create a copy of. Click on the Save As command.

Reference:



<https://flow.microsoft.com/en-us/blog/import-export-bap-packages/> <https://flow.microsoft.com/en-us/blog/make-a-copy/>

QUESTION 39

You use Power Automate to create a flow that automatically sends email to a project manager when project team members mark a task as complete.

Project team members are prematurely marking tasks as complete. Project leads must validate that tasks are complete before an email is sent to the project manager to announce task completion.

You need to modify the flow.

Which component should you use?

- A. a process argument
- B. a condition
- C. an expression
- D. a trigger
- E. a solution

Correct Answer: B

Section:

Explanation:

Use a condition and set the action to send an email.

Reference:

<https://docs.microsoft.com/en-us/power-automate/add-condition>

QUESTION 40

HOTSPOT

You are planning to use the Business Card Reader and Sentiment Analysis prebuilt AI models to build solutions. For each of the following statements, select Yes if the statement is true. Otherwise, select No.

NOTE: Each correct selection is worth one point.

Hot Area:

Answer Area	
Statement	Yes No
The Business Card Reader model can be used with both Power Automate and Power Apps.	<input type="checkbox"/> <input type="checkbox"/>
The Sentiment Analysis model can be used Power Automate only.	<input type="checkbox"/> <input type="checkbox"/>

Answer Area:

Answer Area

Statement	Yes	No
The Business Card Reader model can be used with both Power Automate and Power Apps.	<input checked="" type="checkbox"/>	<input type="checkbox"/>
The Sentiment Analysis model can be used Power Automate only.	<input checked="" type="checkbox"/>	<input type="checkbox"/>

Section:

Explanation:

Reference:

<https://docs.microsoft.com/en-us/ai-builder/business-card-reader-component-model-driven>

<https://docs.microsoft.com/en-us/ai-builder/flow-business-card-reader>

<https://docs.microsoft.com/en-us/ai-builder/flow-sentiment-analysis>

QUESTION 41

HOTSPOT

For each of the following statements, select Yes if the statement is true. Otherwise, select No.

NOTE: Each correct selection is worth one point.

Hot Area:



Answer Area

Statement	Yes	No
Power Apps apps can run only mobile devices.	<input type="radio"/>	<input type="radio"/>
Power Apps can run only with Dynamic 365 products.	<input type="radio"/>	<input type="radio"/>
If a user runs a Power Apps app that accesses information to which the user does not have access, the app grants the user permissions.	<input type="radio"/>	<input type="radio"/>

Answer Area:



Answer Area

Statement	Yes	No
Power Apps apps can run only mobile devices.	<input type="radio"/>	<input checked="" type="radio"/>
Power Apps can run only with Dynamic 365 products.	<input type="radio"/>	<input checked="" type="radio"/>
If a user runs a Power Apps app that accesses information to which the user does not have access, the app grants the user permissions.	<input type="radio"/>	<input checked="" type="radio"/>

Section:

Explanation:

Box 1: No

You can run apps in a browser or on mobile devices.

Box 2: No

On-premises versions of Microsoft Office can also be used.

Box 3: No

You must ensure that the users you share the app with have the appropriate permissions.

Reference:

<https://docs.microsoft.com/en-us/powerapps/powerapps-overview>

<https://docs.microsoft.com/en-us/powerapps/maker/canvas-apps/share-app>

<https://docs.microsoft.com/en-us/power-platform/admin/online-requirements>

QUESTION 42

HOTSPOT

Your company wants to create a help desk system and implement Dynamics 365 Customer Service.

The company has the following requirements:

Provide an application to allow support team staff to chat live with a customer.

Automatically import data from a Microsoft Excel spreadsheet once a day.

Provide a chatbot that can assist customers who need support.

You need to determine which applications to use to meet the requirements.

Which applications should you use? To answer, select the appropriate options in the answer area.

NOTE: Each correct selection is worth one point.

Hot Area:

Requirement	Application
Automatically import data from a Microsoft Excel spreadsheet once a day.	<input type="text"/> Custom Connector Azure Data Lake Power Automate Power BI
Provide a chatbot that can assist customers who need support.	<input type="text"/> Power Virtual Agent Power Automate

Answer Area:

Requirement	Application
Automatically import data from a Microsoft Excel spreadsheet once a day.	<input type="text"/> <ul style="list-style-type: none"> Custom Connector Azure Data Lake Power Automate Power BI
Provide a chatbot that can assist customers who need support.	<input type="text"/> <ul style="list-style-type: none"> Power Virtual Agent Power Automate

Section:

Explanation:

Reference:

<https://docs.microsoft.com/en-us/power-virtual-agents/fundamentals-what-is-power-virtual-agents>

A 10-step Guide to Excel Automation using Power Automate Desktop | by Utkarsh Shahdeo | Medium



QUESTION 43

A company uses Microsoft 365, SharePoint Online, and Dynamics 365 Sales.

You need to recommend tools to build a solution that meets the following requirements:

Synchronize data daily from an external Microsoft SQL Server instance.

Send a report automatically to specific company executives.

Ensure that opportunities over a specified amount are approved by a sales manager.

Which two tools or components should you recommend? Each correct answer presents part of the solution.

NOTE: Each correct selection is worth one point.

- A. Microsoft Excel
- B. Microsoft Word
- C. Power BI
- D. Microsoft DataService
- E. Power Automate

Correct Answer: D, E

Section:

Explanation:

Reference:

<https://docs.microsoft.com/en-us/power-platform/admin/data-integrator> <https://www.powerobjects.com/blog/2019/04/05/flow-approval-process/>

QUESTION 44

A company uses Dynamics 365 Supply Chain Management and Dynamics 365 Finance. User account data must be synchronized between the two systems. You need to ensure that the synchronized data is stored in one place. What should you use?

- A. Azure IoT Central
- B. Azure Active Directory
- C. SQL Server
- D. Common Data Service

Correct Answer: D

Section:

Explanation:

Reference:

<https://docs.microsoft.com/en-us/power-platform/admin/data-integrator>

QUESTION 45

What is a benefit of deploying Microsoft 365 and Dynamics 365 apps in the same tenant?

- A. Use Common Data Services to connect to application data.
- B. You only need to set up groups in Microsoft 365 for permissions to all data.
- C. Users can access both Microsoft 365 and Dynamics 365 by using Single Sign-on (SSO).

Correct Answer: A

Section:

**QUESTION 46**

A company creates canvas apps for its sales team.

A user creates a canvas app from a data source.

You need to determine the screens created.

Which three screens should you identify? Each correct answer presents part of the solution.

NOTE: Each correct selection is worth one point.

- A. welcome
- B. edit/create
- C. browse
- D. details
- E. delete

Correct Answer: B, C, D

Section:

QUESTION 47

A company is using Power Virtual Agents with Dynamics 365 Customer Service.

You create a new topic. The topic performs as expected during testing.

Customers report that the new topic is not visible in the frequently asked questions section of the company's website. You need to ensure customers can see the new topic.

What should you do?

- A. Analyze the chatbot
- B. Paste the link to the website
- C. Publish the topic.
- D. Create a new variable.
- E. Delete and recreate the topic.

Correct Answer: C

Section:

QUESTION 48

HOTSPOT

You are creating Power BI visualizations.

You need to display the visuals where a user can perform each function.

Which solution should you use? To answer, select the appropriate option in the answer area.

NOTE: Each correct selection is worth one point.

Hot Area:

Requirement	Solution
Make decisions by analyzing high-level KPIs.	<ul style="list-style-type: none">Power BI servicePower BI DesktopPower BI dashboards
Drill down into the details of a visual.	<ul style="list-style-type: none">Power BI reportsPower BI DesktopPower BI dashboards

Answer Area:

Answer Area

Requirement

Solution

Make decisions by analyzing high-level KPIs.

▼

- Power BI service
- Power BI Desktop
- Power BI dashboards

Drill down into the details of a visual.

▼

- Power BI reports
- Power BI Desktop
- Power BI dashboards



Section:

Explanation:

Reference:

<https://docs.microsoft.com/en-us/power-bi/visuals/power-bi-visualization-kpi>

<https://docs.microsoft.com/en-us/power-bi/consumer/end-user-drill>

QUESTION 49

HOTSPOT

A company is using Power BI.

The company plans to analyze a large number of datasets. The company is concerned that this may negatively impact performance.

You need to identify and implement features to mitigate any performance issues.

Which features should you use? To answer, select the appropriate options in the answer area.

NOTE: Each correct selection is worth one point.

Hot Area:

Answer Area

Requirement	Feature
Improve performance by reducing table size.	<input type="text"/> <ul style="list-style-type: none"> Aggregations Formulas Modeling view
Cache data locally on a user's device.	<input type="text"/> <ul style="list-style-type: none"> Import Dual

Answer Area:



Answer Area

Requirement	Feature
Improve performance by reducing table size.	<input type="text"/> <ul style="list-style-type: none"> Aggregations Formulas Modeling view
Cache data locally on a user's device.	<input type="text"/> <ul style="list-style-type: none"> Import Dual

Section:

Explanation:

Reference:

QUESTION 50

HOTSPOT

A company plans to create a workflow that periodically runs a Dynamics 365 action based on data in third-party cloud-based solutions.

Which features should you use to create the workflow? To answer, select the appropriate options in the answer area.

NOTE: Each correct selection is worth one point.

Hot Area:

The screenshot shows a 'Hot Area' for a question. It contains an 'Answer Area' with two workflow steps. Each step has a dropdown menu for selecting a component. The first step is 'Ensure that Power Automate can interact with the third-party application.' and its dropdown menu is open, showing 'Triggers', 'Logic Apps', 'Connectors', and 'Gateways'. The second step is 'Periodically check for data changes in the third-party application.' and its dropdown menu is also open, showing 'Actions', 'Triggers', 'Connectors', and 'DirectQuery'. A large watermark 'Vdumps' is visible across the center of the screenshot.

Action	Component
Ensure that Power Automate can interact with the third-party application.	Triggers Logic Apps Connectors Gateways
Periodically check for data changes in the third-party application.	Actions Triggers Connectors DirectQuery

Answer Area:

Answer Area

Action

Ensure that Power Automate can interact with the third-party application.

Component

▼

- Triggers
- Logic Apps
- Connectors
- Gateways

Periodically check for data changes in the third-party application.

▼

- Actions
- Triggers
- Connectors
- DirectQuery

Section:

Explanation:

QUESTION 51

HOTSPOT

You are creating a Power Virtual Agents chatbot to help users search for available meeting rooms within a building.

The chatbot must meet the following requirements:

Allow users to initiate the chatbot by typing the phrase Help me Meeting Guru.

Provide meeting room capacity options of 1-4 people and 5-10 people.

End the chatbot session if the user attempts to schedule a meeting room for more than 10 people.

You need to identify the actions to use.

Which actions should you use? To answer, select the appropriate options in the answer area.

NOTE: Each correct selection is worth one point.

Hot Area:

Answer Area

Requirement

Allow users to initiate the chatbot by typing the phrase **Help me Meeting Guru**.

Provide meeting room capacity options of 1-4 people and 5-10 people.

End the chatbot session when the user attempts to schedule meeting room for more than 10 people.

Action

▼
Call a fallback topic.
Call an action.
Create a question node.
Create a trigger phrase.

▼
Call an action.
Call a fallback topic.
Create a condition.
Create a question node.

▼
Add a condition.
Call an action.
Configure a fallback topic.
Create a trigger phrase.

Answer Area:

Answer Area

Requirement

Allow users to initiate the chatbot by typing the phrase **Help me Meeting Guru**.

Provide meeting room capacity options of 1-4 people and 5-10 people.

End the chatbot session when the user attempts to schedule meeting room for more than 10 people.

Action

▼
Call a fallback topic.
Call an action.
Create a question node.
Create a trigger phrase.

▼
Call an action.
Call a fallback topic.
Create a condition.
Create a question node.

▼
Add a condition.
Call an action.
Configure a fallback topic.
Create a trigger phrase.

Section:

Explanation:

Reference:

<https://docs.microsoft.com/en-us/power-virtual-agents/authoring-create-edit-topics>

QUESTION 52

A company uses Microsoft Flow.

Each time a work order is created, a service manager must review and approve the work order before a worker is dispatched. You need to create a flow to enforce the process.

What should you create?

- A. plug-in
- B. approval flow
- C. business rule
- D. team flow
- E. scheduled flow

Correct Answer: B

Section:

Explanation:

With Power Automate, you can manage the approval of documents or processes across several services, including SharePoint, Dynamics 365, Salesforce, OneDrive for Business, Zendesk, or WordPress.

Reference: <https://docs.microsoft.com/en-us/power-automate/modern-approvals>

QUESTION 53

You are new to working with Microsoft Flow. You create a flow that extracts birth dates for users and then sends a birthday greeting email to users on their birthday. The flow does not properly extract birth dates. Where should you make changes?

- A. Connectors
- B. Expression
- C. Templates

Correct Answer: A

Section:

Explanation:

Select the new Date Time connector. There you will see all of the actions, which help you to convert time zones to format them for local time in an email, add or subtract times, or just get the current time.

Reference:

<https://flow.microsoft.com/en-us/blog/nested-apply-to-each/>

QUESTION 54

A company has a website. The website includes a form that allows the company to collect information about leads. You need to set up an automated workflow to create leads in Dynamics 365 Sales when leads are created on the company's custom website. What should you create?

- A. Task Flow
- B. Power Automate flow
- C. Dynamics 365 workflow
- D. Business Process Flow



Correct Answer: B

Section:

Explanation:

Reference:

<https://trellispoint.com/create-crm-leads-using-microsoft-flow/>

QUESTION 55

A company builds and sells residential apartments. The company uses Dynamics 365 Sales to manage sales opportunities.

Management must receive notifications on their mobile devices when sales opportunities are created.

You need to recommend the appropriate Power Platform components to address the requirements.

Which two components should you recommend to invoke the notification process? Each correct answer presents part of the solution.

NOTE: Each selection is worth one point.

- A. AI Builder
- B. Power Automate
- C. Microsoft Dataverse connector
- D. Power BI

Correct Answer: B, C

Section:

Explanation:

Reference:

<https://www.powerobjects.com/blog/2019/04/05/flow-approval-process/>

<https://www.microsoftpressstore.com/articles/article.aspx?p=3100067>

QUESTION 56

A company uses a Microsoft Excel spreadsheet to record raw material quality daily. The company's chief technology officer (CTO) wants to use a model-driven app to record the information. The chief executive officer (CEO) will fund the development of the app for the CTO only if the CEO understands the benefits of using a model-driven app. You need to identify the benefits of model-driven apps. Which two benefits of using a model-driven app should you identify? Each correct answer presents a complete solution. NOTE: Each correct selection is worth one point.

- A. Users may use the same app on a mobile device, a tablet or a PC.
- B. The app contains prebuilt tables, forms, and views that reduce development time.
- C. Both staff members and anonymous users may use the app.
- D. The app may continue to use the existing Excel spreadsheet as a source of data.

Correct Answer: A, B

Section:

Explanation:

QUESTION 57

A company uses Microsoft Power Platform to monitor social media.

You create a Power Automate cloud flow to process social messages that positively mention the company and its product.

You need to choose a connector to perform sentiment analysis on the social media messages.

Which two connectors can you use in the flow? Each correct answer presents a solution.

NOTE: Each correct selection is worth one point.

- A. Azure Communication Services Chat
- B. Language-Question Answering
- C. Azure Cognitive Service for Language
- D. AI Builder
- E. Azure Application Insights

Correct Answer: C, D

Section:

QUESTION 58

A company is considering using Power Pages for its website.

You need to identify the capabilities of Power Pages.

What are two capabilities of Power Pages? Each correct answer presents a complete solution.

NOTE: Each correct selection is worth one point.

- A. Supporting multiple languages
- B. Creating customized styling for each user
- C. Providing low-code websites hosted as a service
- D. Supplying OData feeds

Correct Answer: A, C

Section:

QUESTION 59

A company is considering using Power Pages for its website.

You need to determine whether the use cases for Power pages meet the company's requirements.

What is a use case Power Pages?

- A. Performing repetitive tasks
- B. Sharing data with customers
- C. Building mobile apps for iOS
- D. Creating visualizations of data

Correct Answer: B

Section:

QUESTION 60

A company stores its customer warranty information in Microsoft Dataverse.

Authenticated and authorized customers must be able to access their own warranty information without requiring a user-assigned Microsoft Power Platform license.

You need to share warranty information with these customers.

What should you use?

- A. Canvas app
- B. Model-driven app
- C. Power BI report
- D. Power Pages site

Correct Answer: D

Section:

QUESTION 61

The front desk of a hotel uses a model-driven app to check in guests.

The hotel wants to create a canvas app for the housekeeping staff to manage cleaning supplies. The canvas app will connect to a new instance of Microsoft Dataverse.

You need to create a new environment for the housekeeping staff.

What should you use?

- A. Microsoft Azure portal
- B. Power Apps maker portal
- C. Microsoft 365 admin center
- D. Microsoft Power Platform admin center

Correct Answer: D

Section:

QUESTION 62

HOTSPOT

You want to create a Power Apps app that allows you to define a custom Sitemap.

What should you do? To answer, select the appropriate options in the answer area.



Hot Area:
Answer Area

Navigate to the Power Apps portal and create

	▼
a canvas app.	
a model-driven app.	
a portal app.	
an app by using a template.	

Answer Area:
Answer Area

Navigate to the Power Apps portal and create

	▼
a canvas app.	
a model-driven app.	
a portal app.	
an app by using a template.	

Vdumps

Section:
Explanation:
Reference:
<https://docs.microsoft.com/en-us/powerapps/powerapps-overview>

QUESTION 63

HOTSPOT

You are building Power BI visualizations for a team.

For each of the following statements, select Yes if the statement is true. Otherwise, select No.

NOTE: Each correct selection is worth one point.

Hot Area:

Answer Area

Statements	Yes	No
Power BI can only retrieve data from up to two different sources for each dashboard.	<input type="radio"/>	<input type="radio"/>
Power BI visualizations can be used in canvas apps and model driven apps.	<input type="radio"/>	<input type="radio"/>
Power BI can display charts and list boxes on dashboards.	<input type="radio"/>	<input type="radio"/>

Answer Area:

Answer Area

Statements	Yes	No
Power BI can only retrieve data from up to two different sources for each dashboard.	<input checked="" type="radio"/>	<input type="radio"/>
Power BI visualizations can be used in canvas apps and model driven apps.	<input type="radio"/>	<input checked="" type="radio"/>
Power BI can display charts and list boxes on dashboards.	<input checked="" type="radio"/>	<input type="radio"/>



Section:

Explanation:

Reference:

<https://docs.microsoft.com/en-us/power-bi/visuals/power-bi-visualization-types-for-reports-and-q-and-a>

<https://docs.microsoft.com/en-us/power-bi/visuals/power-bi-visualization-slicers>

QUESTION 64

HOTSPOT

You are creating a model-driven app.

For each of the following statements, select Yes if the statement is true. Otherwise, select No.

NOTE: Each correct selection is worth one point.

Hot Area:

Answer Area

Statements	Yes	No
To add entities to an app, entities are dragged onto the app canvas from the components area.	<input type="radio"/>	<input type="radio"/>
View definition is created in the component area of the app designer.	<input type="radio"/>	<input type="radio"/>
You must save, validate, and publish your app for others to see the changes.	<input type="radio"/>	<input type="radio"/>

Answer Area:
Answer Area

Statements	Yes	No
To add entities to an app, entities are dragged onto the app canvas from the components area.	<input type="radio"/>	<input checked="" type="radio"/>
View definition is created in the component area of the app designer.	<input checked="" type="radio"/>	<input type="radio"/>
You must save, validate, and publish your app for others to see the changes.	<input checked="" type="radio"/>	<input type="radio"/>

Section:

Explanation:

Reference:

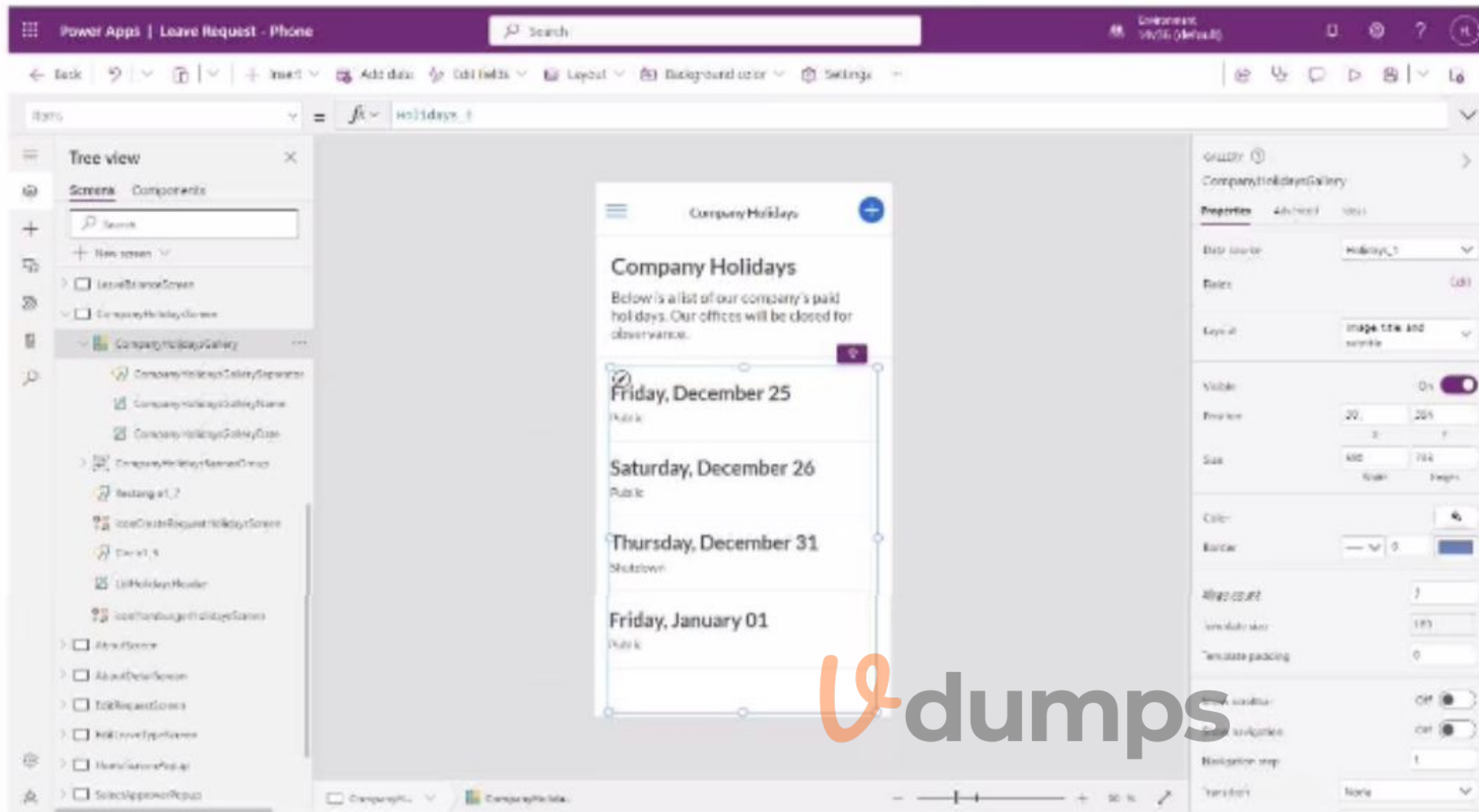
<https://docs.microsoft.com/en-us/powerapps/maker/model-driven-apps/build-first-model-driven-app>

<https://docs.microsoft.com/en-us/powerapps/maker/model-driven-apps/validate-app>

QUESTION 65

HOTSPOT

A company creates a canvas app that allows employees to manage their vacation. The app also contains the company's holiday closures, as show in the following graphic.



Use the drop-down menus to select the answer choice that answers each question based on the information presented in the graphic.

NOTE: Each correct selection is worth one point.

Hot Area:

Answer Area

Questions

What is the name of the gallery control that is selected?

Which icon in the top-right corner of the screen should you select to test the app?

What should you change to update the format of the dates to DD/MM/YYYY?

Answer choice

CompanyHolidaysGallery	▼
Company1 HolidaysGallery	
Holidays_1	
Company Holidays	
Play	▼
Stethoscope	
Play	
Speech bubble	
data source	▼
formula	
control	
data source	

Answer Area:

Answer Area

Questions

What is the name of the gallery control that is selected?

Which icon in the top-right corner of the screen should you select to test the app?

What should you change to update the format of the dates to DD/MM/YYYY?

Answer choice

CompanyHolidaysGallery	▼
Company1 HolidaysGallery	
Holidays_1	
Company Holidays	
Play	▼
Stethoscope	
Play	
Speech bubble	
data source	▼
formula	
control	
data source	

Section:

Explanation:

QUESTION 66

HOTSPOT

A company is building a Power Virtual Agents chatbot to assist employees.

You need to select the features the bot will use when employees request time off.

Which features should you select? To answer, select the appropriate options in the answer area.

NOTE: Each correct selection is worth one point.

Hot Area:

Answer Area

Step

An employee opens the conversation by saying, "I need to take time off."

The chatbot requests the employee's location.

The chatbot recognizes the name of the city the employee provides.

The chatbot creates the time off request in the human resources system.

Feature

- Action
- Action
- Entity
- Trigger phrase
- Show a message node
- Action
- Show a message node
- Trigger phrase
- Trigger phrase
- Entity
- Show a message node
- Trigger phrase
- Action
- Action
- Entity
- Show a message node

Answer Area:
Answer Area

Step

An employee opens the conversation by saying, "I need to take time off."

The chatbot requests the employee's location.

The chatbot recognizes the name of the city the employee provides.

The chatbot creates the time off request in the human resources system.

Feature

- Action
- Action
- Entity
- Trigger phrase
- Show a message node
- Action
- Show a message node
- Trigger phrase
- Trigger phrase
- Entity
- Show a message node
- Trigger phrase
- Action
- Action
- Entity
- Show a message node

Section:
Explanation:

QUESTION 67
HOTSPOT

A tutoring company has developed and deployed a model-driven app for the administration staff and a canvas app for teachers. Instructions: For each of the following statements, select Yes if the statement is true. Otherwise, select No.

NOTE: Each correct selection is worth one point.

Hot Area:

Answer Area

Statements	Yes	No
Teachers can access the canvas app by using desktops and mobile devices.	<input type="radio"/>	<input type="radio"/>
Only assignments of security roles are required for canvas app access.	<input type="radio"/>	<input type="radio"/>
Administration staff can create personal views and dashboards in the model-driven app.	<input type="radio"/>	<input type="radio"/>

Answer Area:

Answer Area

Statements	Yes	No
Teachers can access the canvas app by using desktops and mobile devices.	<input checked="" type="radio"/>	<input type="radio"/>
Only assignments of security roles are required for canvas app access.	<input type="radio"/>	<input checked="" type="radio"/>
Administration staff can create personal views and dashboards in the model-driven app.	<input checked="" type="radio"/>	<input type="radio"/>

Section:

Explanation:

QUESTION 68

HOTSPOT

For each of the following statements, select Yes if the statement is true. Otherwise, select No.

NOTE: Each correct selection is worth one point.

Hot Area:

Answer Area

Statement	Yes	No
Power Virtual Agent chatbots can be created directly in Microsoft Teams.	<input type="radio"/>	<input type="radio"/>
Power Virtual Agent chatbots can use the bot testing feature directly within Microsoft Teams.	<input type="radio"/>	<input type="radio"/>

Answer Area:

Answer Area

Statement	Yes	No
Power Virtual Agent chatbots can be created directly in Microsoft Teams.	<input checked="" type="radio"/>	<input type="radio"/>
Power Virtual Agent chatbots can use the bot testing feature directly within Microsoft Teams.	<input type="radio"/>	<input checked="" type="radio"/>

Section:

Explanation:

QUESTION 69

HOTSPOT

A company uses a model-driven app to manage its sales process.

You are creating a Power Automate cloud flow that will send you a message in Microsoft Teams when a new order is recorded in Microsoft Dataverse.

How should you configure the flow? Select the answer that correctly completes the sentence.



Hot Area:

Answer Area

To determine when the flow will start, you must select

a trigger ▼

an action

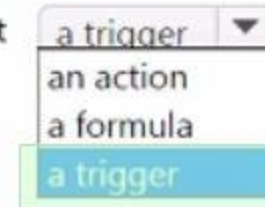
a formula

a trigger

Answer Area:

Answer Area

To determine when the flow will start, you must select



a trigger ▼
an action
a formula
a trigger

Section:

Explanation:

QUESTION 70

A carpet cleaning company uses Dynamics 365 Sales.

The process for entering customer information during onsite sales calls is very complicated. The company wants a simplified screen that allows salespeople to capture the customer name, phone number, and other information while speaking to the customer.

You need to recommend a solution that works on various types of mobile devices.

What should you recommend?

- A. Common Data Service
- B. Power Automate
- C. AI Builder
- D. Canvas app
- E. Power BI

Correct Answer: D

Section:

Explanation:

Reference: <https://powerapps.microsoft.com/en-us/build-powerapps/>

QUESTION 71

A company uses Dynamics 365 Supply Chain Management.

The company wants to build customer user interfaces that add additional functionality.

You need to recommend a solution for the company.

What should you recommend?

- A. Power BI
- B. Power Apps canvas apps
- C. AI Builder
- D. Microsoft Flow

Correct Answer: B

Section:

Explanation:

Microsoft Power Apps provides a consistent experience for building apps and extending Office 365 and Dynamics 365. Investments include enhancements on Unified Interface, support for embedding canvas apps in model-driven apps and native support of the Common Data Service for Apps.

Reference: <https://powerapps.microsoft.com/en-us/roadmap/>



QUESTION 72

You plan to use Power Automate to perform data-management tasks when users interact with data in the common data model. Which three types of events can generate a trigger for the tasks? Each correct answer presents a complete solution. NOTE: Each correct selection is worth one point.

- A. record requested
- B. record deletion
- C. record creation
- D. record updated
- E. record selected

Correct Answer: B, C, D

Section:

Explanation:

Triggers like When a record is created, When a record is updated, and When a record is deleted initiate your flow within a few minutes of the event occurring. In rare cases, your flow can take up to 2 hours to trigger.

Reference: <https://docs.microsoft.com/en-us/power-automate/connection-dynamics365>

QUESTION 73

A company uses Dynamics 365 Supply Chain Management.

When a sales order is created for one of the customers that a specific user manages, a Microsoft Outlook task must be created to remind the user to perform any follow up activities that are required. You need to implement the functionality to create Outlook tasks.

Which two features should you use? Each correct answer presents part of the solution.

NOTE: Each correct selection is worth one point.

- A. AI Builder
- B. Power Apps
- C. Business Events
- D. Power Automate
- E. Common Data Service



Correct Answer: C, D

Section:

Explanation:

Business events in Microsoft Power Automate

Business events can be consumed in Microsoft Power Automate via the application connector. The connector has a trigger that is named when a business event occurs. This trigger can be used to subscribe to any of the business events that are available in the target instance of the application.

Reference:

<https://docs.microsoft.com/en-us/dynamics365/fin-ops-core/dev-itpro/business-events/business-events-flow>

QUESTION 74

This question-requires that you evaluate the underlined text to determine if it is correct.

A company requires that service representatives schedule customer visits every six months. Each service representative is required to enter a scheduled task for the next checkup as they are leaving a client site. A service representative wants to automate task entry by creating a business process flow that can be initiated from the service call screen on a phone.

Review the underlined text. If it makes the statement correct, select "No change is needed." If the statement is incorrect, select the answer choice that makes the statement correct.

- A. No change is needed.
- B. a scheduled
- C. an instant

D. an action

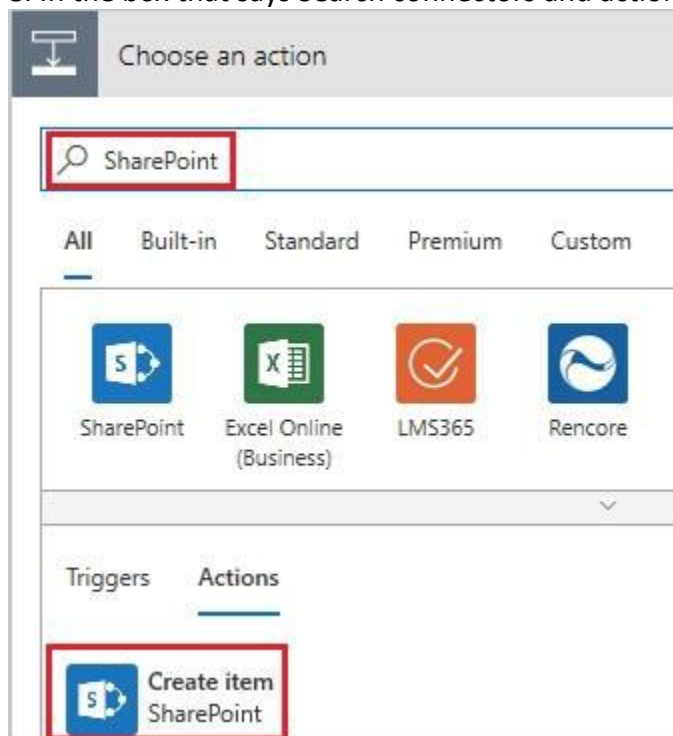
Correct Answer: D

Section:

Explanation:

Note: Create a flow (see step 6 below)

1. Sign in to PowerApps.
2. In the left navigation bar, select Business logic, and then select Flows.
3. In the upper-left corner of the My Flows page, select New, and then select Create from blank.
4. Option to create a flow without using a template
Near the bottom of the page that appears, select Search hundreds of connections and triggers.
5. In the search box, type PowerApps, and then select the PowerApps icon.
6. Create a PowerApps trigger
7. On the next page, select the PowerApps icon again, and then select New step.
8. In the box that says Search connectors and actions, specify an action for your flow, as in this example:



Reference:

<https://docs.microsoft.com/en-us/powerapps/maker/canvas-apps/using-logic-flows>

QUESTION 75

HOTSPOT

A company uses Microsoft Power Platform to connect to multiple data sources and manage business data.

The low-code components in Microsoft Power Platform must be able to create and update data in these data sources.

You need to access the required data by using Microsoft Power Platform components.

Which component should you use for each requirement? To answer, select the appropriate options in the answer area.

NOTE: Each correct selection is worth one point.

Hot Area:

The logo for 'Vdumps' features a stylized orange 'V' followed by the word 'dumps' in a grey, lowercase, sans-serif font.

Answer Area

Requirement

Update data in an API hosted in Azure.

Component

- Custom connector
- Custom connector**
- Microsoft Dataverse
- Power Query

Update files in SharePoint document library folders.

- Power Query
- Microsoft Teams connector
- Microsoft Dataverse
- Power Query**
- Standard connector

Ingest and transform data into Microsoft Dataverse by using dataflows.

- Microsoft Dataverse
- Microsoft Dataverse**
- Power Query
- Standard connector

Answer Area:

Answer Area



Requirement

Update data in an API hosted in Azure.

Component

- Custom connector
- Custom connector**
- Microsoft Dataverse
- Power Query

Update files in SharePoint document library folders.

- Power Query
- Microsoft Teams connector
- Microsoft Dataverse
- Power Query**
- Standard connector

Ingest and transform data into Microsoft Dataverse by using dataflows.

- Microsoft Dataverse
- Microsoft Dataverse**
- Power Query
- Standard connector

Section:

Explanation:

QUESTION 76

HOTSPOT

Institutions: For each of the following statements, select Yes if the statement is true. Otherwise, select No.

NOTE: Each correct selection is worth one point.

Hot Area:

Answer Area

Statements	Yes	No
A Microsoft Power Platform environment must contain a Microsoft Dataverse database.	<input type="radio"/>	<input type="radio"/>
An app created in an environment can only connect to the data sources that are deployed in the same environment.	<input type="radio"/>	<input type="radio"/>
Microsoft Dataverse for Teams environments are automatically created for all members of the team when you create a Microsoft Power Platform app in Microsoft Teams.	<input type="radio"/>	<input type="radio"/>

Answer Area:

Answer Area

Statements	Yes	No
A Microsoft Power Platform environment must contain a Microsoft Dataverse database.	<input type="radio"/>	<input checked="" type="radio"/>
An app created in an environment can only connect to the data sources that are deployed in the same environment.	<input checked="" type="radio"/>	<input type="radio"/>
Microsoft Dataverse for Teams environments are automatically created for all members of the team when you create a Microsoft Power Platform app in Microsoft Teams.	<input type="radio"/>	<input checked="" type="radio"/>



Section:

Explanation:

QUESTION 77

HOTSPOT

You are creating a model-driven app.

Instructions: For each of the following statements, select Yes if the statement is true. Otherwise, select No.

NOTE: Each correct selection is worth one point.

Hot Area:

Answer Area

	Yes	No
To add entities to an app, entities are dragged onto the app canvas from the components area.	<input type="radio"/>	<input type="radio"/>
View definition is created in the component area of the app designer.	<input type="radio"/>	<input type="radio"/>
You must save, validate, and publish your app for others to see the changes.	<input type="radio"/>	<input type="radio"/>

Answer Area:

Answer Area

	Yes	No
To add entities to an app, entities are dragged onto the app canvas from the components area.	<input type="radio"/>	<input checked="" type="radio"/>
View definition is created in the component area of the app designer.	<input checked="" type="radio"/>	<input type="radio"/>
You must save, validate, and publish your app for others to see the changes.	<input checked="" type="radio"/>	<input type="radio"/>

Section:

Explanation:

QUESTION 78

HOTSPOT

You build solutions based on Microsoft Power Platform.

You want to generate predictions in Power Automate cloud flows by using machine learning (ML) models.

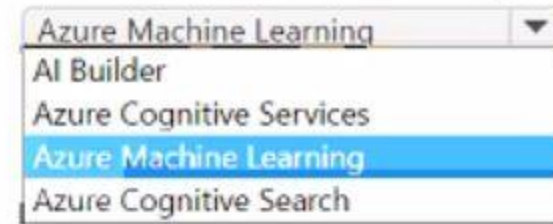
You need to choose how to build and train the ML models to perform predictions.

Select the answer that correctly completes the sentence.

Hot Area:

Answer Area

Building and training no-code ML models for use with Microsoft Power Platform flows is performed by using

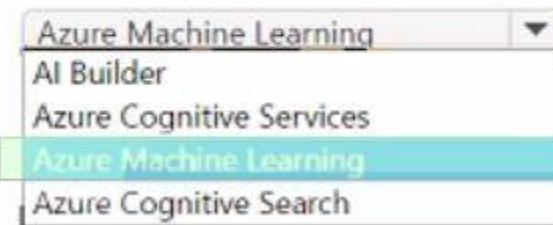


A screenshot of a dropdown menu. The menu is open, showing four options: 'Azure Machine Learning', 'AI Builder', 'Azure Cognitive Services', and 'Azure Cognitive Search'. The 'Azure Machine Learning' option is highlighted with a blue background.

Answer Area:

Answer Area

Building and training no-code ML models for use with Microsoft Power Platform flows is performed by using



A screenshot of a dropdown menu, identical to the one above. The 'Azure Machine Learning' option is highlighted with a light blue background.

Section:

Explanation:

QUESTION 79

HOTSPOT

An environmental agency creates tables named Specimen and Species in Microsoft Dataverse to record specimens that are collected on nature walks as well as their species. Some of the columns of the Specimen table are shown in the following image:



Power Apps Environment 14v36 (default)

Search

Tables > Specimen > Columns

Display name	Name	Data type	Managed	Customizable	Required	Searchable
Created By	CreatedBy	Lookup	No	Yes	No	Yes
Created By (Delegate)	CreatedOnBehalfBy	Lookup	No	Yes	No	Yes
Created On	CreatedOn	Date and time	No	Yes	No	Yes
Import Sequence Number	ImportSequenceNumber	Whole number	No	Yes	No	Yes
Modified By	ModifiedBy	Lookup	No	Yes	No	Yes
Modified By (Delegate)	ModifiedOnBehalfBy	Lookup	No	Yes	No	Yes
Modified On	ModifiedOn	Date and time	No	Yes	No	Yes
Name <small>Primary name column</small>	cr2e0_Name	Single line of text	No	Yes	Yes	Yes
Owner	OwnerId	Owner	No	Yes	Yes	Yes
Owning Business Unit	OwningBusinessUnit	Lookup	No	Yes	No	Yes
Owning Team	OwningTeam	Lookup	No	Yes	No	No
Owning User	OwningUser	Lookup	No	Yes	No	No
Record Created On	OverriddenCreatedOn	Date and time	No	Yes	No	Yes
Species	cr2e0_Species	Lookup	No	Yes	No	Yes
Specimen	cr2e0_SpecimenId	Unique identifier	No	Yes	Yes	Yes

For each of the following statements, select Yes if the statement is true. Otherwise, select No.
NOTE: Each correct selection is worth one point.

Hot Area:
Answer Area

Statements	Yes	No
Many specimens can be associated with a given species.	<input type="radio"/>	<input type="radio"/>
The Specimen table is organization owned.	<input type="radio"/>	<input type="radio"/>
The Name column is the primary key of the Specimen table.	<input type="radio"/>	<input type="radio"/>

Answer Area:

Answer Area

Statements

Many specimens can be associated with a given species.

Yes

No

The Specimen table is organization owned.

The Name column is the primary key of the Specimen table.

Section:

Explanation:

QUESTION 80

HOTSPOT

A company plans to use Power BI to visualize data.

Instructions: For each of the following statements, select Yes if the statement is true. Otherwise, select No.

NOTE: Each correct selection is worth one point.

Hot Area:

Answer Area

Power BI allows users to create and consume visualizations in one view by using data from several different sources.

Yes

No

Power Platform uses Microsoft SQL Server databases to securely store and manage data used by business applications.

Answer Area:

Answer Area

Power BI allows users to create and consume visualizations in one view by using data from several different sources.

Yes

No

Power Platform uses Microsoft SQL Server databases to securely store and manage data used by business applications.

Section:

Explanation:

QUESTION 81

HOTSPOT

A company plans to create Power Platform apps that use industry-standard and proprietary data sources.

For each of the following statements, select Yes if the statement is true. Otherwise, select No.

NOTE: Each correct selection is worth one point.

Hot Area:

Answer Area

Statement	Yes	No
Custom connectors can be used if a standard connector for the service is available.	<input type="radio"/>	<input type="radio"/>
Custom connectors are supported in instant flows only.	<input type="radio"/>	<input type="radio"/>
Standard and custom connectors can be mixed within the same flow or app.	<input type="radio"/>	<input type="radio"/>

Answer Area:

Answer Area

Statement	Yes	No
Custom connectors can be used if a standard connector for the service is available.	<input checked="" type="radio"/>	<input type="radio"/>
Custom connectors are supported in instant flows only.	<input type="radio"/>	<input checked="" type="radio"/>
Standard and custom connectors can be mixed within the same flow or app.	<input checked="" type="radio"/>	<input type="radio"/>

Section:

Explanation:

QUESTION 82

HOTSPOT

Your company has created a Power Virtual Agents chatbot to assist employees with common questions such as checking their vacation balances, office opening hours, and travel expense policies.

For each of the following statements, select Yes if the statement is true. Otherwise, select No.

NOTE: Each correct selection is worth one point.

Hot Area:

Power Virtual Agents capabilities

Statements	Yes	No
To retrieve the user's vacation balance, the bot can use an action.	<input type="radio"/>	<input type="radio"/>
Topics are components the bot can recognize in user dialog, such as the name of a particular office.	<input type="radio"/>	<input type="radio"/>
A user needs to enter an exact trigger phrase for the bot to respond with appropriate information.	<input type="radio"/>	<input type="radio"/>

Answer Area:

Power Virtual Agents capabilities

Statements	Yes	No
To retrieve the user's vacation balance, the bot can use an action.	<input checked="" type="radio"/>	<input type="radio"/>
Topics are components the bot can recognize in user dialog, such as the name of a particular office.	<input checked="" type="radio"/>	<input type="radio"/>
A user needs to enter an exact trigger phrase for the bot to respond with appropriate information.	<input type="radio"/>	<input checked="" type="radio"/>

Section:

Explanation:

QUESTION 83

DRAG DROP

You are creating a Power Automate flow.

You need to retrieve data from several sources including Microsoft Excel Azure Data Lake, and GitHub. What should you use? To answer, drag the appropriate components to the correct data sources. Each component may be used once, more than once, or not at all. You may need to drag the split bar between panes or scroll to view content. NOTE: Each correct selection is worth one point.

Select and Place:

Components	Answer Area	Data source	Component
Connector		Microsoft Excel	
Expression		Azure Data Lake	
Formula		GitHub	

Correct Answer:

Components	Answer Area	Data source	Component
		Microsoft Excel	Formula
		Azure Data Lake	Connector
		GitHub	Expression

Section:

Explanation:

QUESTION 84

You create a Power Apps canvas app.
You need to ensure that your coworkers can run the app.
What should you do?

- A. Share the app.
- B. Send the URL for the app to coworkers.
- C. Publish the app.
- D. Create a Flow for the app.

Correct Answer: A

Section:

Explanation:

Reference: <https://docs.microsoft.com/en-us/powerapps/maker/canvas-apps/share-app>

QUESTION 85

A company uses Microsoft 365, Power Platform, and Dynamics 365. You do not assign permissions to any licensed users. Users are able to create and edit Power Apps canvas apps. In which environment are users creating and editing the apps?

- A. Production
- B. Default
- C. Sandbox

Correct Answer: C

Section:

Explanation:

Reference: <https://docs.microsoft.com/en-us/power-platform/admin/environments-overview>

QUESTION 86

A company is creating a canvas app to display data from a legacy SQL Server database that is located on the company's internal network. You need to connect to the data. What should you use?

- A. custom connector
- B. content pack
- C. data gateway
- D. Power BI

Correct Answer: C

Section:

Explanation:

Reference: <https://docs.microsoft.com/en-us/powerapps/maker/canvas-apps/gateway-management>

The logo for Vdumps.com, featuring a stylized orange 'V' followed by the word 'dumps' in a grey, lowercase, sans-serif font.

QUESTION 87

You are creating a canvas app that uses one connector.

Which two objects are provided by the connector? Each correct answer presents a complete solution.

NOTE: Each correct selection is worth one point.

- A. customizations
- B. data sources
- C. actions
- D. tables

Correct Answer: C, D

Section:

Explanation:

Reference: <https://docs.microsoft.com/en-us/powerapps/maker/canvas-apps/connections-list>

QUESTION 88

A company is considering implementing Power Platform. The company must minimize development costs.

For which three scenarios should you consider implementing Power Apps Portals? Each correct answer presents a complete solution.

NOTE: Each correct selection is worth one point.

- A. a customer support website that includes knowledgebase search and support for document uploads
- B. a public website that supports multilingual communities with forums and blogs support

- C. a secure website for mobile users that is available only by using a VPN into the corporate network
- D. a secure website for vendors accessing data stored in Common Data Service
- E. an internal website for employees with limited access to Dynamics 365 Finance data

Correct Answer: A, B, E

Section:

Explanation:

Reference: <https://docs.microsoft.com/en-us/powerapps/maker/portals/portal-templates>

QUESTION 89

A company uses Dynamics 365 Supply Chain Management.

You need to use Power Automate to automate the process of receiving and tracking raw materials.

Which type of connector should you use?

- A. Common Data Service
- B. Dynamics 365
- C. Dynamics 365 for Fin & Ops
- D. Dynamic Signal

Correct Answer: A

Section:

Explanation:

Dynamics 365 for Finance and Operations is now being licensed as Dynamics 365 Finance and Dynamics 365 Supply Chain Management. You can use Common Data Service to enable the flow of data between Finance and Operations apps and Dynamics 365 Sales.

Reference:

<https://docs.microsoft.com/en-us/dynamics365/fin-ops-core/dev-itpro/data-entities/data-integration-cds>

QUESTION 90

A company performs on-site inspections and services for air industrial equipment.

Field technicians must perform a series of maintenance checks every time they visit a customer site. Every technician performs maintenance tasks in a different order. Some technicians miss steps. You need to ensure that all technicians perform the same steps in the same order.

What should you use?

- A. Business process flow
- B. AI Builder
- C. Business rule
- D. Virtual Agent

Correct Answer: A

Section:

Explanation:

You can help ensure that people enter data consistently and follow the same steps every time they work with a customer by creating a business process flow. For example, you might want to create a business process flow to have everyone handle customer service requests the same way, or to require that people get approval for an invoice before submitting an order. Business process flows use the same underlying technology as other processes, but the capabilities that they provide are very different from other features that use processes.

Reference: <https://docs.microsoft.com/en-us/power-automate/business-process-flows-overview>

QUESTION 91

DRAG DROP

A customer service department uses Microsoft Dynamics 365 Customer Service to manage repair requests. The repair team tracks their efforts using a Microsoft SharePoint list. The company must use Microsoft Power Platform to connect the repair team with the Dynamics 365 Customer Service solution. The solution must meet the following requirements:

Requirement Number	Requirement
Requirement 1	From a custom page in the Dynamics 365 interface, allow the customer service team to input a repair number, view the details of the corresponding SharePoint list item, and add notes for the repair team.
Requirement 2	Create a report that visualizes real-time customer service information that the repair team can access online and use to create dashboards.
Requirement 3	Automatically send a Microsoft Teams message to a customer service agent and an email to the customer when a repair team member completes a repair.

You need to implement the appropriate technologies to meet the requirements.

Which technologies should you use? To answer, drag the appropriate technologies to the correct scenarios. Each technology may be used once, more than once, or not at all. You may need to drag the split bar between panes or scroll to view content.

NOTE: Each correct selection is worth one point.

Select and Place:

Correct Answer:

Section:

Explanation:

QUESTION 92

DRAG DROP

A company uses Microsoft Power Apps and Microsoft Azure to modernize its mobile workforce.

The company needs to identify solutions for three use cases:

- * An app to audit retail store displays with a tablet-specific layout for its unique screen dimensions
- * An app to create sales orders that uses business process flows
- * An app to display product information that uses data for a Microsoft Dataverse instance, Microsoft Excel, and Microsoft Sharepoint

You need to identify the correct app types to use.

Which apps should you use? To answer, drag the appropriate app types to the correct apps. Each app type may be used once, more than once, or not at all. You may need drag the split bar between panes or scroll to view content.

NOTE: Each correct selection is worth on point.

Select and Place:

App types	Answer Area
Logic	
Canvas	
Model-driven	

App	App type
App to audit retail store displays	
App to create sales orders	
App to display product information	

Correct Answer:

App types	Answer Area

App	App type
App to audit retail store displays	Canvas
App to create sales orders	Model-driven
App to display product information	Logic

Section:

Explanation:



QUESTION 93

DRAG DROP

You create a Power Pages site to share Microsoft Dataverse data with external customer.

Customer must be authenticated to view data.

Which component should you use for each requirement? To answer, drag the appropriate component to the correct requirements. Each component may be used more once than once, or not at all. You may need to drag the split bar between panes or scroll to view content.

Select and Place:

Components	Answer Area
Form	
IFrame	
List	
Section	

Requirement	Component
Collect data from customers and store the data in a table.	
Display multiple rows from a table.	

Correct Answer:

Components

- Iframe
- Section

Answer Area

Requirement

- Collect data from customers and store the data in a table.
- Display multiple rows from a table.

Component

- Form
- List

Section:

Explanation:

QUESTION 94

DRAG DROP

Match each type of Power Apps app to its capability.

To answer, drag the appropriate app type from the column on the left to its capability on the right. Each app type may be used once, more than once, or not at all

NOTE Each correct match is worth one point.

Select and Place:

App types

- Canvas app
- Model-driven app

Answer Area

Capability

- Enables fully customizable layout, design, and color scheme
- Connects to multiple data sources
- Uses business process flows to guide users through a data entry process
- Scans barcodes

App type

Correct Answer:

App types

- Canvas app
- Model-driven app

Answer Area

Capability

- Enables fully customizable layout, design, and color scheme
- Connects to multiple data sources
- Uses business process flows to guide users through a data entry process
- Scans barcodes

App type

- Canvas app
- Canvas app
- Model-driven app
- Canvas app

Section:

Explanation:

QUESTION 95

DRAG DROP

A company implements Microsoft Power Platform.

Sales team members must take photos for their travel expense receipts and enter basic information about purchases.

The accounting team must be able to view and update records in a shared Microsoft Excel document on mobile devices.

You need to select the type of Power Apps app for each scenario.

Which type of app should you use? To answer, drag the appropriate apps to the correct scenarios- Each app may be used once, more than once, or not at all. You may need to drag the split bar between panes or scroll to view content

Select and Place:

Apps
Canvas app
Model-driven app

Answer Area

Scenario
Sales team
Accounting team

App

Correct Answer:

Apps

Answer Area

Scenario
Sales team
Accounting team

App
Canvas app
Model-driven app

Section:

Explanation:

QUESTION 96

DRAG DROP

You need to read data from a Microsoft Excel file into Microsoft Dataverse and then copy that data into an enterprise resource planning (ERP) system.

You need to configure the connector.

What should you use? To answer, drag the appropriate operations to the correct actions. Each operation may be used once, more than once, or not at all. You may need to drag the split bar between panes or scroll to view content.

NOTE: Each correct selection is worth one point.

Select and Place:

Operations
Trigger
Action
Business process flow
Business rule

Answer Area

Action
Import into Microsoft Dataverse.
Synchronize data to ERP system.

Operation

Correct Answer:

Operations

-
- Action
-
- Business rule

Answer Area

Action

- Import into Microsoft Dataverse.
- Synchronize data to ERP system.

Operation

- Trigger
- Business process flow

Section:

Explanation:

QUESTION 97

HOTSPOT

You are creating a Power Automate approval flow.

Instructions: For each of the following statements, select Yes if the statement is true. Otherwise, select No.

NOTE: Each correct selection is worth one point.

Hot Area:

Answer Area			
Statements	Yes	No	
The addition of an expense report to a Microsoft OneDrive folder can initiate an approval flow.	<input type="radio"/>	<input type="radio"/>	
Approvals must follow a sequential order of approval.	<input type="radio"/>	<input type="radio"/>	

Answer Area:

Statements	Yes	No
The addition of an expense report to a Microsoft OneDrive folder can initiate an approval flow.	<input checked="" type="radio"/>	<input type="radio"/>
Approvals must follow a sequential order of approval.	<input type="radio"/>	<input checked="" type="radio"/>

Section:

Explanation:

Box 1: Yes

Box 2: No

Parallel approvals, integrated approvals, and unanimous approvals are also allowed.

Reference:

<https://docs.microsoft.com/en-us/power-automate/modern-approvals>

<https://docs.microsoft.com/en-us/power-automate/create-approval-response-options>

QUESTION 98

HOTSPOT

You create a Power Virtual Agents chatbot for use with Microsoft Teams. You are testing the chatbot.

Testers report the following issues:

Changes that you make to the chatbot are not seen by testers.

When users enter the word refund the chatbot must ask the user the product for which they would like a refund. The chatbot does not ask the user for product information.

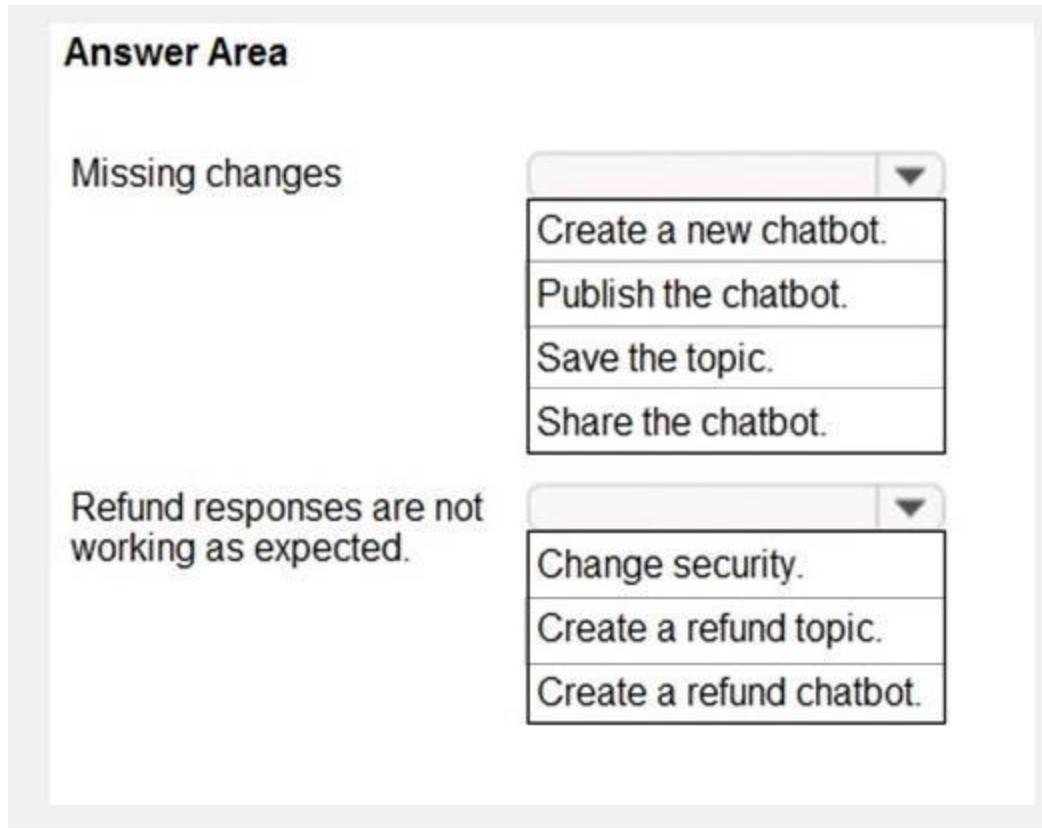
You need to determine what needs to be done to fix the issues.

What should you do? To answer, select the appropriate options in the answer area.

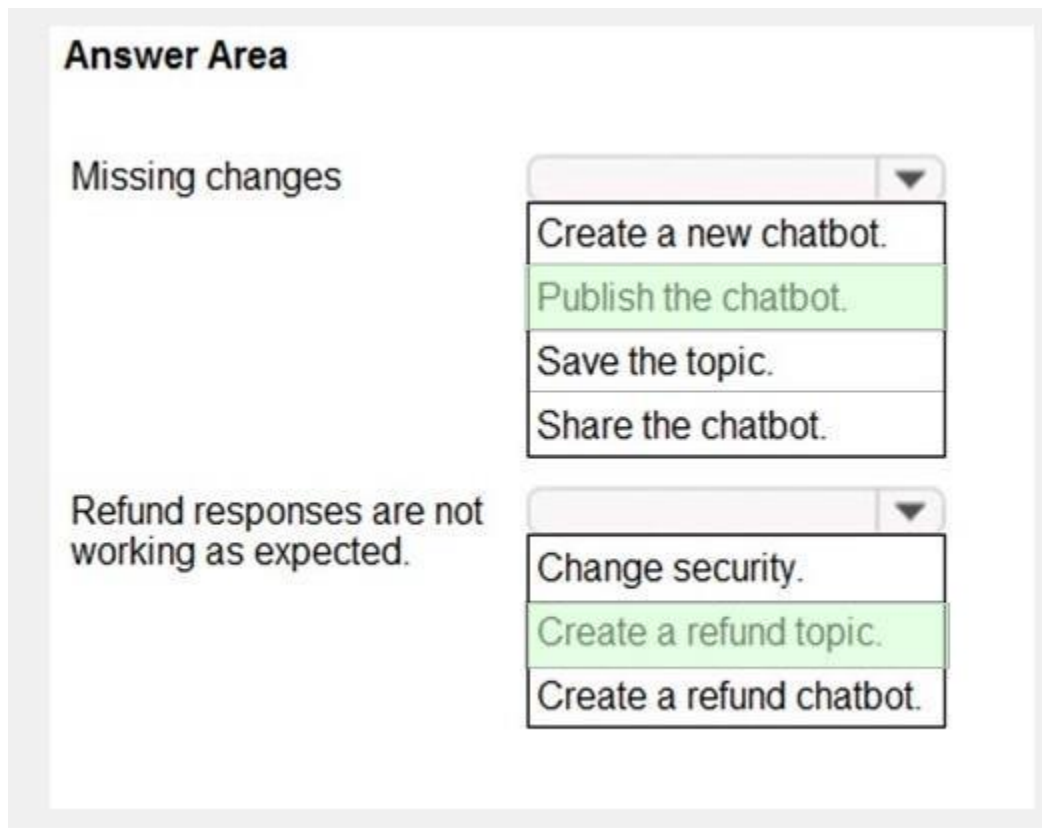
NOTE: Each correct selection is worth one point.

Hot Area:





Answer Area:



Section:

Explanation:

Reference:

<https://docs.microsoft.com/en-us/power-virtual-agents/publication-fundamentals-publish-channels>

QUESTION 99

HOTSPOT

You are creating a number of Power Automate flows.

You need to select the triggers for the flows.

Which flow types should you use? To answer, select the appropriate options in the answer area.

NOTE: Each correct selection is worth one point.

Hot Area:

Requirement	Flow type
Trigger a flow when a button is selected.	<div data-bbox="914 705 1368 768">▼</div> <ul data-bbox="914 768 1368 968" style="list-style-type: none">UI FlowAutomaticBusiness Process FlowInstant
Trigger a flow when a record is created.	<div data-bbox="914 993 1368 1056">▼</div> <ul data-bbox="914 1056 1368 1255" style="list-style-type: none">UI FlowAutomaticBusiness Process FlowInstant
Guide a user through a series of steps in a model-driven app.	<div data-bbox="914 1281 1368 1344">▼</div> <ul data-bbox="914 1344 1368 1543" style="list-style-type: none">UI FlowAutomaticBusiness Process FlowInstant

Answer Area:

Answer Area

Requirement

Flow type

Trigger a flow when a button is selected.

	▼
UI Flow	
Automatic	
Business Process Flow	
Instant	

Trigger a flow when a record is created.

	▼
UI Flow	
Automatic	
Business Process Flow	
Instant	

Guide a user through a series of steps in a model-driven app.

	▼
UI Flow	
Automatic	
Business Process Flow	
Instant	

Section:

Explanation:

Reference:

<https://docs.microsoft.com/en-us/power-automate/triggers-introduction>

<https://docs.microsoft.com/en-us/power-automate/business-process-flows-overview>

QUESTION 100

HOTSPOT

You are developing a Power Virtual Agents chatbot for a company.

For each of the following statements, select Yes if the statement is true. Otherwise, select No.

NOTE: Each correct selection is worth one point.

Hot Area:

Answer Area

Statement	Yes	No
You must create a topic to specify how a chatbot responds to a user.	<input type="radio"/>	<input type="radio"/>
You can use prebuilt entities or custom defined entities.	<input type="radio"/>	<input type="radio"/>

Answer Area:

Answer Area

Statement	Yes	No
You must create a topic to specify how a chatbot responds to a user.	<input checked="" type="radio"/>	<input type="radio"/>
You can use prebuilt entities or custom defined entities.	<input checked="" type="radio"/>	<input type="radio"/>

Section:

Explanation:

Reference:

<https://docs.microsoft.com/en-us/power-virtual-agents/authoring-fundamentals>

<https://docs.microsoft.com/en-us/power-virtual-agents/advanced-entities-slot-filling>

QUESTION 101

HOTSPOT

An organization plans to create Power Platform solutions and is evaluating Microsoft Dataverse.

Instructions: For each of the following statements, select Yes if the statement is true. Otherwise, select No. NOTE: Each correct selection is worth one point.

Hot Area:

Answer Area

	Yes	No
Virtual table data is stored in Microsoft Dataverse.	<input type="radio"/>	<input type="radio"/>
Columns are used in forms and views.	<input type="radio"/>	<input type="radio"/>

Answer Area:

Answer Area

	Yes	No
Virtual table data is stored in Microsoft Dataverse.	<input type="radio"/>	<input checked="" type="radio"/>
Columns are used in forms and views.	<input checked="" type="radio"/>	<input type="radio"/>

Section:

Explanation:

Box 1: No

A virtual table is a definition of a table in the Dataverse platform without the associated physical tables for table instances created in the Dataverse database. Instead during runtime, when a table instance is required, its state is dynamically retrieved from the associated external system.

Box 2: Yes

Columns in forms: In the form designer, drag any columns from the Columns Explorer into the section on the form.

Reference:

<https://docs.microsoft.com/en-us/powerapps/developer/data-platform/virtual-entities/get-started-ve>

QUESTION 102

HOTSPOT

Instructions: For each of the following statements, select Yes if the statement is true. Otherwise, select No. NOTE: Each correct selection is worth one point.

Hot Area:

Answer Area

	Yes	No
Managed solutions can be used to group multiple Power Platform components together during solution development.	<input type="radio"/>	<input type="radio"/>
Managed solutions must be used to distribute a Power Platform application on AppSource.	<input type="radio"/>	<input type="radio"/>
Managed solutions always protect Power Platform components from editing when components are exported to another environment.	<input type="radio"/>	<input type="radio"/>

Answer Area:

Answer Area



	Yes	No
Managed solutions can be used to group multiple Power Platform components together during solution development.	<input checked="" type="radio"/>	<input type="radio"/>
Managed solutions must be used to distribute a Power Platform application on AppSource.	<input type="radio"/>	<input checked="" type="radio"/>
Managed solutions always protect Power Platform components from editing when components are exported to another environment.	<input checked="" type="radio"/>	<input type="radio"/>

Section:

Explanation:

Box 1: Yes

Managed solutions are used to deploy to any environment that isn't a development environment for that solution. Box 2: No

Unmanaged solutions can be exported either as unmanaged or managed.

Box 3: Yes

You can't edit components directly within a managed solution. To edit managed components, first add them to an unmanaged solution.

Reference:

<https://docs.microsoft.com/en-us/power-platform/alm/solution-concepts-alm>

QUESTION 103

HOTSPOT

You are learning about Power Apps and how to use triggers.

Which objects should you use? To answer, select the appropriate options in the answer area.

NOTE: Each correct selection is worth one point.

Hot Area:

Statement	Component
When a condition is met, Power Apps app can trigger a	<input type="checkbox"/> connector. <input type="checkbox"/> Power Automate flow. <input type="checkbox"/> gateway. <input type="checkbox"/> solution.
Actions and triggers are properties of a	<input type="checkbox"/> connector. <input type="checkbox"/> gateway. <input type="checkbox"/> solution.

Answer Area:

Statement	Component
When a condition is met, Power Apps app can trigger a	<div style="border: 1px solid gray; padding: 2px;"> <div style="background-color: #f0f0f0; padding: 2px; display: flex; justify-content: space-between; align-items: center;">▼</div> <div style="padding: 2px;">connector.</div> <div style="padding: 2px;">Power Automate flow.</div> <div style="padding: 2px;">gateway.</div> <div style="padding: 2px;">solution.</div> </div>
Actions and triggers are properties of a	<div style="border: 1px solid gray; padding: 2px;"> <div style="background-color: #f0f0f0; padding: 2px; display: flex; justify-content: space-between; align-items: center;">▼</div> <div style="padding: 2px;">connector.</div> <div style="padding: 2px;">gateway.</div> <div style="padding: 2px;">solution.</div> </div>

Section:

Explanation:

Box 1: connector

A connection is a proxy or a wrapper around an API that allows the underlying service to talk to Microsoft Power Automate, Microsoft Power Apps, and Azure Logic Apps. It provides a way for users to connect their accounts and use a set of pre-built actions and triggers to build their apps and workflows.

Power Automate offers connectors (apps/services like SharePoint, Outlook, /.) and most connectors offer prebuilt triggers that you can use to start your flows. Box 2: solution

If you're creating an action to include as part of a solution that will be distributed, create it in the context of the solution. Go to Settings > Solutions and locate the unmanaged solution that this action will be part of.

Reference: <https://docs.microsoft.com/en-us/connectors/connectors> <https://docs.microsoft.com/en-us/powerapps/maker/data-platform/configure-actions>

QUESTION 104

HOTSPOT

For each of the following statements, select Yes if the statement is true. Otherwise, select No.

NOTE: Each correct selection is worth one point.

Hot Area:

Answer Area

Statement	Yes	No
You can embed a canvas app in a Microsoft Forms form to collect user feedback.	<input type="radio"/>	<input type="radio"/>
You can embed a canvas app within a Microsoft Excel worksheet to allow users to interact with data in a structured way.	<input type="radio"/>	<input type="radio"/>
You can embed a canvas app within a Power Platform model-driven app.	<input type="radio"/>	<input type="radio"/>

Answer Area:

Answer Area

Statement	Yes	No
You can embed a canvas app in a Microsoft Forms form to collect user feedback.	<input checked="" type="radio"/>	<input type="radio"/>
You can embed a canvas app within a Microsoft Excel worksheet to allow users to interact with data in a structured way.	<input type="radio"/>	<input checked="" type="radio"/>
You can embed a canvas app within a Power Platform model-driven app.	<input checked="" type="radio"/>	<input type="radio"/>

Section:

Explanation:

Box 1: Yes

With embedded canvas apps, makers can bring the power of canvas apps to their model-driven forms. Using embedded canvas apps, it is possible to create rich visual areas on a form and display data from a variety of sources right next to data from Microsoft Dataverse.

Box 2: No Box 3: Yes

Reference:

<https://docs.microsoft.com/en-us/powerapps/maker/model-driven-apps/embed-canvas-app-in-form>

QUESTION 105

HOTSPOT

Instructions: For each of the following statements, select Yes if the statement is true. Otherwise, select No. NOTE: Each correct selection is worth one point.

Hot Area:

Answer Area

	Yes	No
You can customize buttons and menu items in canvas apps but cannot reorder the screens.	<input type="radio"/>	<input type="radio"/>
You can add sections to your canvas app forms at any time. Screens can only be added when the canvas app is created.	<input type="radio"/>	<input type="radio"/>
You can edit buttons in a Power Apps app only by using a third-party application.	<input type="radio"/>	<input type="radio"/>

Answer Area:

Answer Area

	Yes	No
You can customize buttons and menu items in canvas apps but cannot reorder the screens.	<input type="radio"/>	<input checked="" type="radio"/>
You can add sections to your canvas app forms at any time. Screens can only be added when the canvas app is created.	<input type="radio"/>	<input checked="" type="radio"/>
You can edit buttons in a Power Apps app only by using a third-party application.	<input type="radio"/>	<input checked="" type="radio"/>

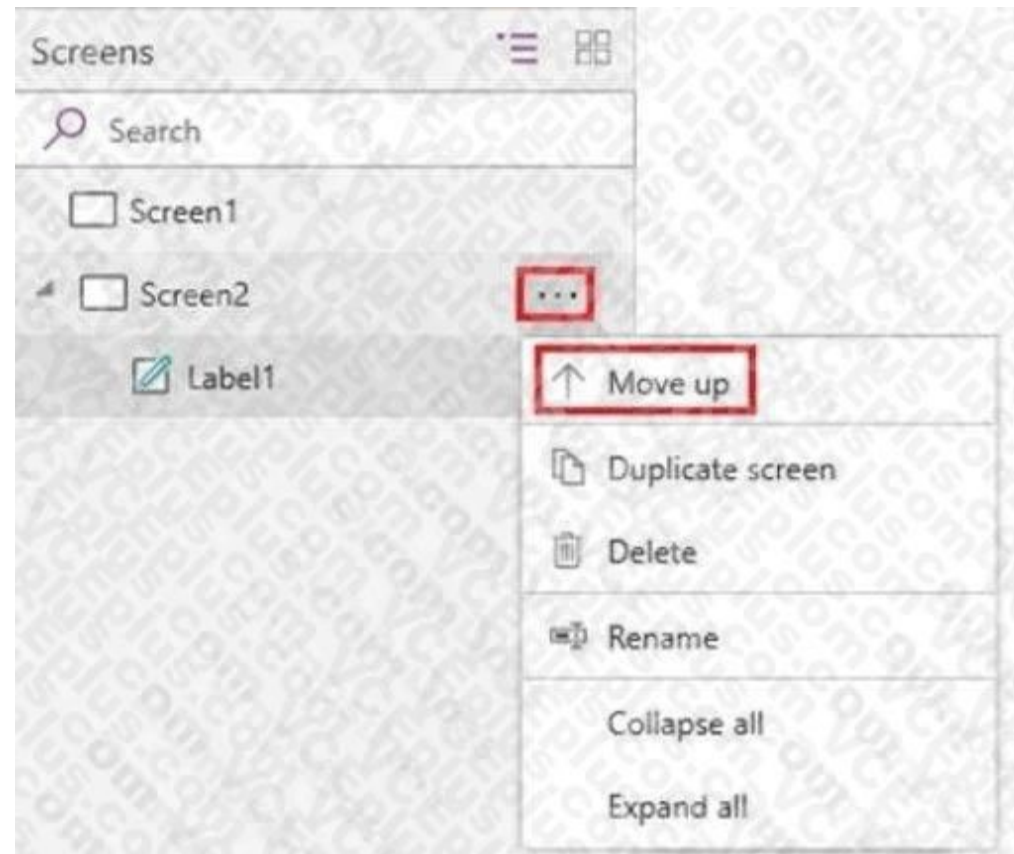
Section:

Explanation:

Box 1: No

You can reorder screens.

 Vdumps



In the left navigation bar, hover over a screen that you want to move up or down, select the ellipsis button that appears, and then select Move up or Move down. Box 2: No
You can add screens to the app after it has been created.

Box 3: No

For example, you can change a button's shape. By default, Power Apps creates a rectangular Button control with rounded corners. You can make basic modifications to the shape of a Button control by setting its Height, Width, and Radius properties.

Reference: <https://docs.microsoft.com/en-us/powerapps/maker/canvas-apps/add-screen-context-variables> <https://docs.microsoft.com/en-us/powerapps/maker/canvas-apps/controls/control-button>

QUESTION 106

HOTSPOT

A company plans to build solutions by using Power Platform technologies.

For each of the following statements, select Yes if the statement is true. Otherwise, select No.

NOTE: Each correct selection is worth one point.

Hot Area:

Answer Area

Statement	Yes	No
Power Virtual Agents chat data is saved unless it is deleted by the customer after a chat session.	<input type="radio"/>	<input type="radio"/>
Power Automate flows operate with administrative privileges at all times.	<input type="radio"/>	<input type="radio"/>

Answer Area:

Answer Area

Statement	Yes	No
Power Virtual Agents chat data is saved unless it is deleted by the customer after a chat session.	<input checked="" type="radio"/>	<input type="radio"/>
Power Automate flows operate with administrative privileges at all times.	<input type="radio"/>	<input checked="" type="radio"/>

Section:

Explanation:

Box 1: Yes

By default, you can download up to seven days of bot conversation transcript sessions from the past 30 days directly from the Power Virtual Agents portal. Box 2: No

You can set the permissions for a Flow.

Reference:

<https://docs.microsoft.com/en-us/power-virtual-agents/analytics-sessions> <https://docs.microsoft.com/en-us/connectors/microsoftflowforadmins>

QUESTION 107

DRAG DROP

A company uses Microsoft power platform to manage support tickets.

Customers submit support requests by sending an email to a support email address.

All high-priority emails must be logged into a Microsoft Excel sheet for historical purposes.

You need to identify the components that are required for logging the email in Excel.

Which components should you use? To answer, drag the appropriate components to the correct requirements. Each component may be used once, more than once, or not at all. You may need to drag the spilt bar between panes or scroll to view content.

Note: Each correct selection is worth one point.

Select and Place:

Components

Action	Connector
Trigger	

Answer Area

Requirement

Start a workflow when an email is sent to a specific email address.

Evaluate whether an email is high priority in the flow by using a condition.

Create a row in Excel with information about incoming high-priority email.

Component

Correct Answer:

Components

Answer Area

Requirement

Start a workflow when an email is sent to a specific email address.

Evaluate whether an email is high priority in the flow by using a condition.

Create a row in Excel with information about incoming high-priority email.

Component

Trigger
Action
Connector

Section:

Explanation:

QUESTION 108

DRAG DROP

Your company uses a SharePoint list to track issues raised by customers.

You need to create a Power Automate cloud flow that will send an acknowledgement email to the customer when a new item is added to the SharePoint list. The flow should then alert the customer service team by posting a message on their Teams channel.

Which connector components should you use to complete the flow? To answer, move the appropriate connector component to the correct flow step. You may use each connector component once, more than once, or not at all. You may need to move the split bar between panes or scroll to view content

NOTE: Each correct selection is worth one point.

Select and Place:

Connector components

Teams action	Outlook action
Outlook trigger	SharePoint trigger

Connector components

Flow step

Start the flow.

Send the email.

Post the message.

Connector component

Correct Answer:

Connector components

	Outlook action

Connector components

Flow step	Connector component
Start the flow.	SharePoint trigger
Send the email.	Outlook trigger
Post the message.	Teams action

Section:
Explanation:

QUESTION 109

DRAG DROP

A customer service manager runs a call center and support portal for customers seeking assistance. The customer service manager learns customers are unhappy with support by reading reviews online, which has become a time-consuming task. The customer service manager has the following requirements:

- * Any negative reviews are automatically identified.
- * Any negative review should generate an email notification to the customer service manager.

You need to identify the components to create a solution.

What should you identify to meet the requirements? To answer, select the appropriate options in the answer area.

NOTE: Each correct selection is worth one point.

Select and Place:

Solutions

Object detector	Power Automate
Text recognition	Sentiment analysis

Solutions



Requirement

Identify negative language within the text of a review.
Send an email notification.

Solution

Correct Answer:

Solutions

Object detector	
Text recognition	

Solutions

Requirement

Identify negative language within the text of a review.
Send an email notification.

Solution

Sentiment analysis
Power Automate

Section:
Explanation:

QUESTION 110

DRAG DROP

You need to deploy a Power Pages site by using a template. Which three actions should you perform in sequence? To answer, move the appropriate actions from the list of actions to the answer area and arrange them in the correct order.

Select and Place:

Actions

- Create a connection to Microsoft Dataverse.
- Publish the site.
- Select a Microsoft Dataverse environment.
- Choose a template.
- Enter a name and web address.



Answer Area

Empty answer area



Correct Answer:

Actions

- Create a connection to Microsoft Dataverse.
- Publish the site.
-
-
-



Answer Area

- Select a Microsoft Dataverse environment.
- Choose a template.
- Enter a name and web address.



Section:

Explanation:

Select a Microsoft Dataverse environment.
Choose a template.
Enter a name and web address.

