

Cisco.300-615.vJun-2024.by.Ysac.93q

Number: 300-615  
Passing Score: 800  
Time Limit: 120  
File Version: 12.0

**Exam Code: 300-615**

**Exam Name: Troubleshooting Cisco Data Center Infrastructure (DCIT)**

## Exam A

### QUESTION 1

You have an ACI environment with three APICs, two spine switches, and four-leaf switches. You wipe and reboot all APICs first then leaf and spine switches one-by-one and successfully go through the Initial Setuo dialogue on the APIC 1 CIMC KVM console. When you log in to the APIC1 WebGUI, you notice that you do not see any directly connected leaf switches being discovered under Fabric > Inventory > Fabric Membership. What is the cause of the issue?

- A. The leaf nodes were not erased properly, which caused a fabric parameters mismatch with the APIC1.
- B. Rebooting the APICs and the leaf and spine switches after wiping them is not required.
- C. You forgot to enter the TEP Pool value during the Initial Setup dialogue on APIC1.
- D. The same Fabric Name value should be used before after wiping all devices.

**Correct Answer: C**

**Section:**

### QUESTION 2

An engineer must replace a failed memory on a Cisco UCS B-Series Blade Server. After the replacement was done, the server has a “resolve slot” warning. Which server maintenance action resolves the issue?

- A. Perform diagnostic interrupt on the server.
- B. Re-acknowledgement the server.
- C. Reset the server.
- D. Decomission the server.

**Correct Answer: B**

**Section:**

### QUESTION 3

Cisco Unified Computing System Manager raises a critical error message that indicates that the system has overlapping Ethernet and FCoE VLANs. All of the Ethernet traffic on the overlapping VLANs drops. Which action resolves the issue?

- A. Modify the VLAN assignment to vNICs.
- B. Change the PIN groups on the vHBAs.
- C. Modify the FCoE VLAN.
- D. Set the FCoE VLAN as the native VLAN on server uplinks.

**Correct Answer: C**

**Section:**

### QUESTION 4

Refer to the exhibit.

```
leaf1# show interface ethernet 1/11
Ethernet1/11 is up (out-of-service)
admin state is up, Dedicated Interface
  Hardware: 1000/10000 Ethernet, address: e4aa/5d94.a2b5 (bia e4aa.5d94.a2b5)
  MTU 9000 bytes, BW 10000000 Kbit, DLY 1 usec
  reliability 255/255, txload 1/255, rxload 1/255
  Encapsulation ARPA, medium is broadcast
  Port mode is trunk
  full-duplex, 10 Gb/s, media type is 10G
  FEC (forward-error-correction) : disable-fec
  Beacon is turned off
  Auto-Negotiation is turned on
  Input flow-control is off, output flow-control is off
  Auto-mdix is turned off
  Rate mode is dedicated
  Switchport monitor is off
  EtherType is 0x8100
  EEE (efficient-ethernet) : n/a
  Last link flapped 4d06h
  Last clearing of "show interface" counters never
  1 interface resets
  30 seconds input rate 0 bits/sec, 0 packets/sec
  30 seconds output rate 0 bits/sec, 0 packets/sec
```

An engineer is performing a health check on ACI. Which statement about interface Ethernet 1/11 is true?

- A. The interface is working correctly and fully operational, but it is not in use.
- B. The interface policy is misconfigured.
- C. "out-of-service" is the default interface status in ACI.
- D. "out-of-service" indicates that no service graph is in use for this interface.

**Correct Answer: B**

**Section:**

#### QUESTION 5

A user reports that they cannot reach from a UCS server to an FC Storage array. Which command is used to test communication between an FCF and a target?

- A. fcroute
- B. traceroute
- C. fcping
- D. ping

**Correct Answer: C**

**Section:**

#### QUESTION 6

An engineer is implementing a storage VDC, but fails. Which two prerequisites must be in place before a storage VDC is implemented? (Choose two.)

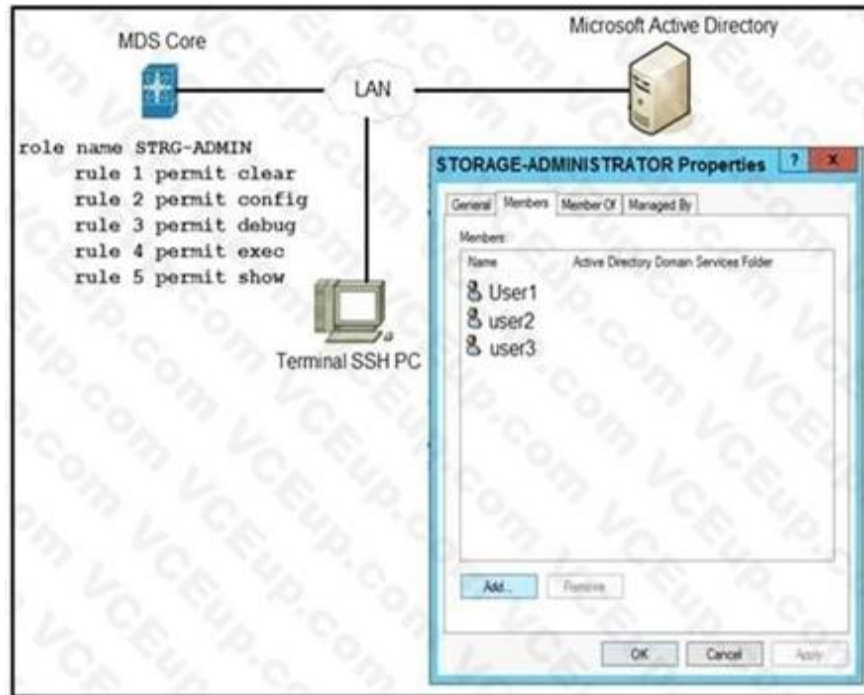
- A. M-Series module
- B. ESSENTIALS license
- C. STORAGE-ENT license
- D. FCoE license
- E. F-Series module

Correct Answer: D, E

Section:

### QUESTION 7

Refer to the exhibit.



An engineer is troubleshooting why user1, user2, and user3 from group STORAGE- ADMINISTRATOR in Microsoft Active Directory cannot log in to the Cisco MDS SSH CLI. Which action resolves the issue?

- A. Configure the role name to match the group name on Microsoft Active Directory.
- B. Include specific users into MDS role configuration.
- C. Configure SSH logins on Cisco MDS switch.
- D. Integrate Cisco MDS with Microsoft Active Directory.

Correct Answer: A

Section:

### QUESTION 8

Refer to the exhibit.

```
vlan 100
fcoe vsan 200

interface ethernet 1/1
 switchport
 switchport access vlan 100
 spanning-tree port type edge
 mtu 9216
 no shutdown
```

An attempt to bind the Ethernet interface to vFC fails. Which action resolves the issue?

- A. Add the FCoE VLAN to the allowed VLAN list.

- B. Configure the FCoE VLAN that corresponds to the vFC VSAN as a private VLAN.
- C. Configure the interface as a trunk port.
- D. Configure the interface to use the native VLAN of the trunk port.

**Correct Answer: C**

**Section:**

#### QUESTION 9

Refer to the exhibit.

```
Test-5548-A# sh int fc2/10
fc2/10 is down (Initializing)
Hardware is Fibre Channel, SFP is short wave laser w/o OFC (SN)
Port WWN is 20:42:00:0d:fc:a5:3b:81
Admin port mode is NP, trunk mode is on
```

A new Cisco Nexus 5548 Switch connects to a network. SAN switching is configured on the switch. The switch fc2/10 NP uplink is shown in the exhibit. Which action ensures that fc2/10 is in an up state?

- A. Replace the SFP port module in fc2/10.
- B. Configure the admin port type E on the upstream switch that connects the port.
- C. Enable NPIV on the upstream switch that connects the port.
- D. Configure the BB\_credit buffers on the upstream switch that connects the port.

**Correct Answer: C**

**Section:**

#### QUESTION 10

Refer to the exhibit.

```
ACME-5K-A(config-vsan-db) # sh int fc2/16
fc2/16 is down (Inactive)
Port description is UplinkTo MDS-A 1/6
Hardware is Fibre Channel, SFP is short wave laser
w/o OFC (SN)
Port WWN is 20:50:00:2a:6a:98:bc:80
Admin port mode is E, trunk mode is auto
snmp link state traps are enabled
Port vsan is 1
Receive data field Size is 2112
Beacon is turned off
```

The connection between a Cisco Nexus 5548UP switch and a Cisco MDS switch fails to initialize. What is the cause of the issue?

- A. VSAN 1 is suspended.
- B. The SFP is unsupported.
- C. Trunk mode must be activated.
- D. The interface is in an incorrect mode.

**Correct Answer: A**

**Section:**

**QUESTION 11**

A server fails to boot from the operating system after a RAID1 cluster migration. The RAID remains in an inactive state during and after a service profile association. Which action resolves the issue?

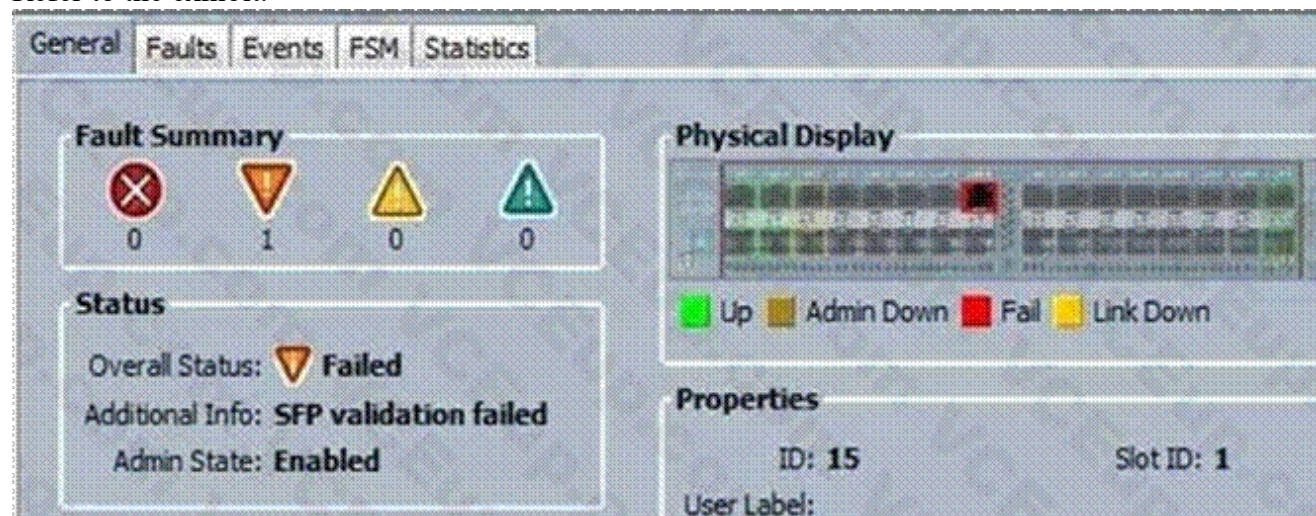
- A. Configure the SAN boot target in the service profile.
- B. Configure the SAN boot target to any configuration mode.
- C. Use a predefined local disk configuration policy.
- D. Remove the local disk configuration policy.

**Correct Answer: C**

**Section:**

**QUESTION 12**

Refer to the exhibit.



When an engineer inserts 8-Gb FC SFP port 15 on a Cisco UCS Fabric Interconnect, the port fails. What is a possible cause of the issue?

- A. Port 15 is configured as an Ethernet port.
- B. Port 15 is configured for 4-Gb FC.
- C. Port 15 is missing a license.
- D. The polarity of the fiber cable is reversed.

**Correct Answer: A**

**Section:**

**QUESTION 13**

An engineer discovers that an NPV/NPIV uplink experiences a heavy load and plans to add more uplinks. Which statement about what occurs when the new uplinks are added is true?

- A. Only new connections use the new uplinks automatically.
- B. Paths must be defined before new connections can use the new uplinks.
- C. All connections must be reset before the new uplinks can be used.
- D. New and existing connections use the new uplinks automatically.

**Correct Answer: D**

**Section:**

**QUESTION 14**

An engineer is troubleshooting a failed DCBX exchange between a server and a Cisco Nexus switch. Which action allows DCBX to successfully negotiate?

- A. Enable ETS
- B. Enable PFC.
- C. Enable Cisco Discovery Protocol.
- D. Enable LLDP.

**Correct Answer: D**

**Section:**

**QUESTION 15**

Refer to the exhibit.

```
FC0001# show zone active
zone name hba1_VN0001 vsan 3201
  fcid 0x970209 [pwwn 50:ab:0b:00:00:c2:8f:de]
* fcid 0x970102 [pwwn 20:ba:00:a0:98:3b:6f:d8]

zone name hba1_VN0002 vsan 3201
* fcid 0x970200 [pwwn 50:ab:0b:00:00:c2:8a:67]
  fcid 0x9700c2 [pwwn 20:ba:00:a0:98:3b:61:99]
```

The initiator that has FC ID 0x970102 fails to communicate with the target that has FC ID 0x970200. What action resolves the issue?

- A. Reconfigure the initiator and the target to be in the same zones.
- B. Reactivate the zoneset.
- C. Reset the port for FC ID 0x970102 and FC ID 0x970200 to log in to the fabric.
- D. Reset the port for FC ID 0x970209 and FC ID 0x9700c2 to log in to the fabric.

**Correct Answer: A**

**Section:**

**QUESTION 16**

One of Cisco Nexus Series interfaces has become errdisabled with the error message “DCX-No ACK in 100 PDUs”. What is the cause of this error?

- A. The host has not responded to the Control Sub-TLV DCBX exchanges of the switch.
- B. The acknowledgement number in the server response has not incremented for 100 exchanges.
- C. Cisco Discovery Protocol is disabled on the switch.
- D. LLDP is disabled on the switch.

**Correct Answer: A**

**Section:**

**QUESTION 17**

A Fibre Channel interface on a Cisco Nexus 5000 Series Switch receives bit errors, and the switch disables the interface. A temporary workaround must be implemented before the root cause is identified. Which action does an engineer take to prevent this issue from reoccurring?

- A. Verify that the SFPs are supported.
- B. Change the SFP to operate at 4 Gbps instead of 2 Gbps.
- C. Run the shutdown and then no shutdown command on the interface.
- D. Run the switchport ignore bit-errors command on the interface.

**Correct Answer: D**

**Section:**

#### QUESTION 18

A fabric interconnect fails to start and the console displays the loader prompt. Which two actions resolve the issue? (Choose two.)

- A. Load an uncorrupt bootloader image.
- B. Load an uncorrupt kickstart image.
- C. Reconnect L1/L2 cables between the Fis.
- D. Reformat the fabric interconnect.
- E. Load the correct version of the boot image.

**Correct Answer: B, E**

**Section:**

#### QUESTION 19

Refer to the exhibit.

```
event manager applet config_monitor
event cli match "conf t"
action 1.0 snmp-trap strdata "User has entered into configuration mode"
```

The EEM script fails to send an SNMP trap when a user attempts to enter configuration mode. Which configuration is missing from the script?

- A. event statement
- B. event-default action statement
- C. policy-default action statement
- D. IP address of the SNMP server

**Correct Answer: B**

**Section:**

#### QUESTION 20

Refer to the exhibit.

```
serverteam Cleartext-Password := "<password>"

Cisco-avpair = "shell:domains = user/admin/,common//read-
all(16000)"
```

An engineer is investigating a role mapping issue on a switch. The users report that they cannot view the IP addresses under the tenant "corp". Which action resolves the issue?



- A. Add the users to the RADIUS server.
- B. Update the UNIX ID.
- C. Configure the correct secret password between the APIC and the RADIUS server.
- D. Add the updated avpair to include/corp/admin/

**Correct Answer: D**

**Section:**

#### QUESTION 21

Refer to the exhibit.

```
switch#show run
--output removed for brevity--
event manager applet conf-change
  event cli match "conf t"
  action 1.0 syslog msg Configuration change
switch#
switch# conf t
%Command blocked by event manager policy
switch#
```

A network engineer configures an EEM script to get a syslog notification after a configuration change.

This message appears when the engineer must make a new configuration to this switch. Which configuration did the engineer neglect to apply in the script for it to function properly?

- A. event cli match 'configure terminal'
- B. event policy-default count 1 time 100
- C. event syslog occurs 10
- D. action 2.0 event-default

**Correct Answer: D**

**Section:**

#### QUESTION 22

Refer to the exhibit.

```
event manager applet looback_online override -BootupPortLoopback
  action 1 syslog priority notifications msg "Switch Online"
  action 2 policy-default
```

The EEM script overrides all events in the system policy. What should be added to the script to resolve the issue?

- A. event statement
- B. environment variable
- C. event-default action statement
- D. configure terminal action

**Correct Answer: A**

**Section:**

#### QUESTION 23

An upgrade of protected RPMs from the Bash shell did not take effect. Which action is required for the changes to take effect?

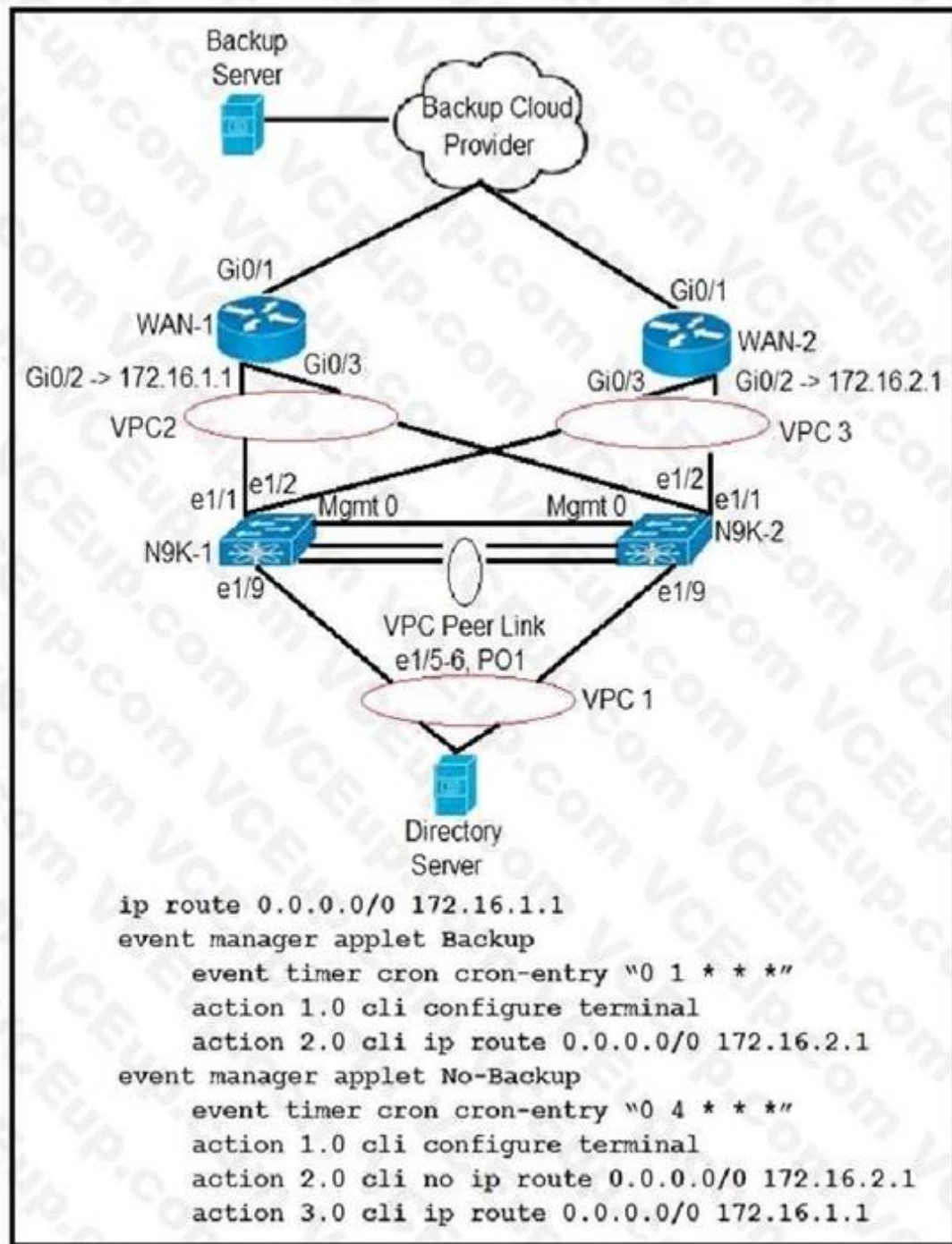
- A. Restart the Bash shell.
- B. Reload the switch.
- C. Upgrade the RPMs from the Guest shell.
- D. Disable and reenale the Bash feature.

**Correct Answer: B**

**Section:**

**QUESTION 24**

Refer to the exhibit.



Partial configuration from N9K-1 and N9K-2 is included. The client has two WANs connected. WAN-1 is for normal business-day activities.

WAN-2 is for server backups during nonworking hours of 1:00 a.m. to 5:00 a.m. daily.

The client says that at the scheduled time for backup, the data center server failed to use the WAN-2 link to back up the servers to the cloud backup system. What is the solution to this problem?

- A. The event timer must be written in epoch time format.
- B. The Cisco Nexus switch must be configured with one applet because a configuration with two applets will fail.
- C. The Cron entry must be configured without double quotes.
- D. The applet called "Backup" must include an action to remove the current static route.

**Correct Answer: D**

**Section:**

#### QUESTION 25

A network administrator attempts to install an application in the Cisco NX-OS Guest shell and receives an error that there is not enough space on the disk. Which command must the administrator run to increase the disk space available in the Guest shell?

- A. `guestshell growdisk rootfs [size-in-MB]`
- B. `guestshell pvextend rootfs [size-in-MB]`
- C. `guestshell resize rootfs [size-in-MB]`
- D. `guestshell resize2fs rootfs [size-in-MB]`

**Correct Answer: C**

**Section:**

#### QUESTION 26

Refer to the exhibit.

```
switch# guestshell resize cpu 4
Note: System CPU share will be resized on Guest shell enable
```

After the configuration is performed, guestshell continues to use 2%CPU. Which action resolves the issue?

- A. Resync the database
- B. Recreate the guestshell
- C. Reboot the guestshell
- D. Reboot the switch

**Correct Answer: C**

**Section:**

#### QUESTION 27

An engineer is troubleshooting a custom AV pair that was created by a client on an external authentication server to map a read-only role for a specific security domain. Which AV pair solves the problem?

- A. `shell:domains=Security_Domain_1//Read_Role_1|Read_Role_2`
- B. `shell:domains=Security_Domain_1/Write_Role_1|Read_Role_2`
- C. `shell=Security_Domain_1/Read_Role_1|Read_Role_2`
- D. `shell:domains=Security_Domain_1/Read_Role_1|Read_Role_2`

**Correct Answer: D**

**Section:**

**QUESTION 28**

A request to activate the port security database is rejected. Which action do you perform to investigate the cause of the issue?

- A. Enable the auto-learning feature.
- B. Use the force option to identify rejected devices.
- C. Find conflicting entries between the active and configuration databases.
- D. Verify that devices are fully attached to the active database.

**Correct Answer: B**

**Section:**

**QUESTION 29**

Your client reports that many flaps and server cluster disconnects occur in their data center. While troubleshooting the issue, you discover a network attack hitting their Cisco Nexus 7000 Series Switches and determine that the source IP addresses are spoofed. Which first-line security solution resolves this issue?

- A. Dynamic ARP Inspection
- B. Unicast RPF
- C. IP Source Guard
- D. Storm Control

**Correct Answer: A**

**Section:**

**QUESTION 30**

A server administrator attempts to change the Cisco IMC KVM certificate to one signed by a private CA, but the certificate is not being accepted. What can cause this process to fail?

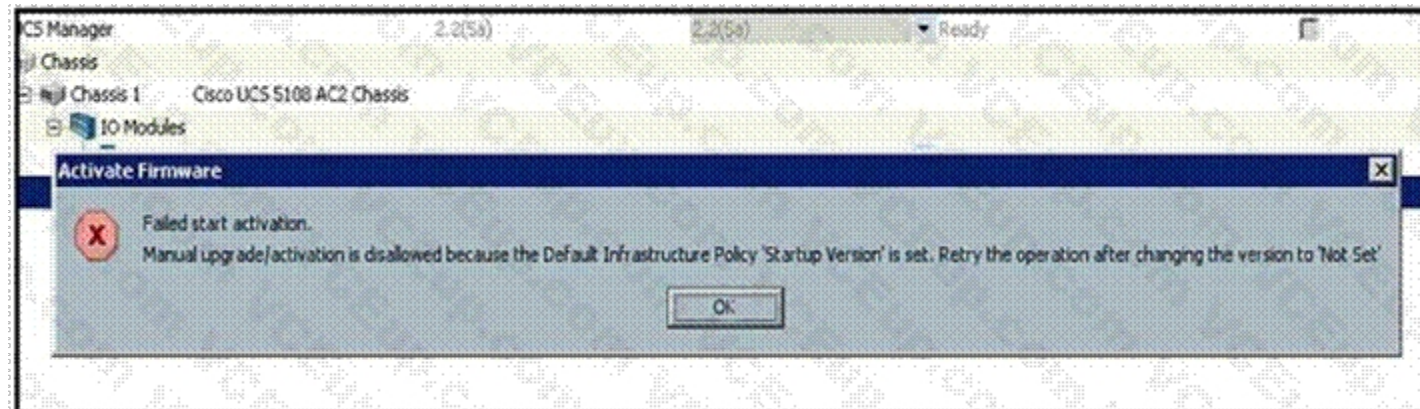
- A. using a certificate with a password-protected private key
- B. RSA encryption being used in the generation of the certificate.
- C. AES encryption being used in the generation of the certificate.
- D. public IP address of the Cisco IMC not being included in the SAN.

**Correct Answer: A**

**Section:**

**QUESTION 31**

Refer to the exhibit.



Cisco UCS Manager is being upgraded using the Auto Install feature, but the FSM fails. Which action resolves the issue?

- A. Acknowledge the primary fabric interconnect.
- B. Remove the service pack from the subordinate fabric interconnect.
- C. Clear the startup version of the default infrastructure pack.
- D. Upgrade the firmware of the infrastructure firmware by using the force option.

**Correct Answer: C**

**Section:**

### QUESTION 32

An IOM fails during a firmware upgrade and is unresponsive. Which action recovers the module?

- A. Restore UCSM configuration from backup.
- B. Roll back to the previous firmware.
- C. Use AutoInstall to reinstall the firmware.
- D. From the peer IOM, reset the faulty module.

**Correct Answer: C**

**Section:**

### QUESTION 33

Refer to an exhibit.

```
N5k-A-199# sh install all impact system
N5000-uk9.7.1.4.N1.1.bin kickstart
N5000-uk9-kickstart.7.3.4.N1.1.bin
Verifying image bootflash:/n5000-uk9-
kickstart.7.3.4.N1.1.bin for boot
variable "kickstart".
[#####] 100% -- SUCCESS
Verifying image bootflash:/n5000-
uk9.7.1.4.N1.1.bin for boot variable
"system".
[# ] 0% -- FAIL. Return code 0x4045001F
(image MD5 checksum error).
Install has failed. Image verification
failed (0x40930011)
```

An engineer is troubleshooting an upgrade failure on a switch. Which action resolves the issue?

- A. Save the system image in NVRAM.
- B. Use the same system image as the kickstart image.
- C. Load a new system image.
- D. Reload the same system image.

**Correct Answer: C**

**Section:**

### QUESTION 34

After upgrading a client's fabric interconnect to the latest version, an engineer discovers that the appliance has lost its entire configuration. Which two locations should an engineer check to confirm that the appliance had backed up the configuration prior to the upgrade in order to retrieve the lost configuration? (Choose two.)

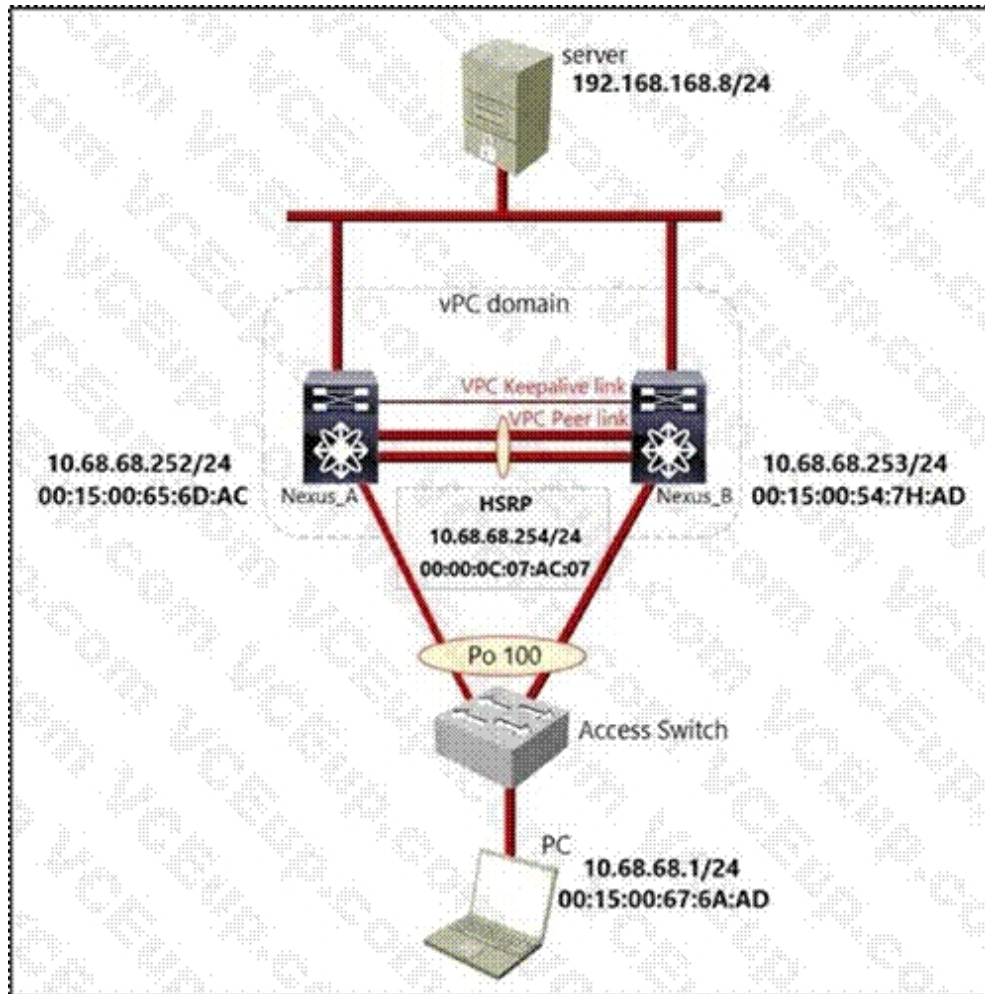
- A. Equipment FSM page, InternalBackup stage
- B. Service profiles page, InternalBackup stage
- C. Admin page, PollInternalBackup stage
- D. Equipment FSM page, PollInternalBackup stage
- E. Admin page, InternalBackup stage.

**Correct Answer: A, D**

**Section:**

**QUESTION 35**

Refer to the exhibit.



A PC belongs to VLAN 68. The user experiences a large amount of packet loss when communicating with hosts that are outside of VLAN 68. Which action resolves the problem?

- A. Replace HSRP with GLBP
- B. Enable the peer-gateway feature
- C. Remove the HSRP configuration
- D. Configure ip arp synchronization on both switches.

**Correct Answer: B**

**Section:**

**Explanation:**

I assume that the PC is sending traffic with destination MAC of Nexus physical interfaces. If more snapshots about this question are available, please share.

### QUESTION 36

Refer to the exhibit.

```
NEXUS_7010# show install all impact system bootflash:n7000-a2-kickstart.6.2.14.bin
Installer will perform impact only check. Please wait.

Verifying image bootflash:n7000-a2-kickstart.6.2.14.bin for boot variable "kickstart".
[#####] 100% -- SUCCESS

Verifying image bootflash:n7000-a2-kickstart.6.2.14.bin for boot variable "system".
[#####] 0% -- FAIL.
Pre-upgrade check failed. Return code 0x40930011 (Image verification failed).
```

An upgrade operation fails with an error displayed. Which action resolve the issue?

- A. Use a different system image
- B. Use a different kickstart image
- C. Allocate extra space on a flash drive to extract a kickstart image
- D. Allocate extra space on a flash drive to extract a system image

**Correct Answer: A**

**Section:**

**Explanation:**

Kickstart image verification succeeded. System image has failed.

### QUESTION 37

An engineer must upgrade all components in a Cisco UCS domain to the same package version, but the upgrade process fails to complete. Which set of Auto Install actions resolves the problem?

- A. Install Infrastructure Firmware, then Install Server Firmware.
- B. Install infrastructure Firmware, then Install Hypervisor Firmware.
- C. Install Hypervisor Firmware, then Install Infrastructure Firmware
- D. Install Server Firmware, then Install Infrastructure Firmware

**Correct Answer: A**

**Section:**

**Explanation:**

[https://www.cisco.com/c/en/us/td/docs/unified\\_computing/ucs/sw/firmware-mgmt/gui/2-5/b\\_GUI\\_Firmware\\_Management\\_25/b\\_GUI\\_Firmware\\_Management\\_25\\_chapter\\_0111.pdf](https://www.cisco.com/c/en/us/td/docs/unified_computing/ucs/sw/firmware-mgmt/gui/2-5/b_GUI_Firmware_Management_25/b_GUI_Firmware_Management_25_chapter_0111.pdf)



### QUESTION 38

Refer to the exhibit.

```

switch(config)#event manager applet highcpu
switch(config-applet)#action 0.1 syslog msg High CPU DETECTED "show process cpu sort" written to bootflash:highcpu.txt
switch(config-applet)#action 0.3 cli show process cpu sort >> bootflash:highcpu.txt
switch(config-applet)#action 0.4 cli show process cpu hist >> bootflash:highcpu.txt
switch(config-applet)#action 0.6 cli show process cpu sort >> bootflash:highcpu_Core.txt
switch(config-applet)#action 0.7 cli exit
switch(config-applet)#action 0.9 cli show process cpu sort >> bootflash:highcpu_Dist.txt
switch(config-applet)#action 1.0 cli exit

```

The EEM script is applied in the default VDC to collect the outputs during high CPU utilization on the Cisco Nexus 7000 Series Switch for all VDCs. Which configuration set must be added to the script to fix the issue?

- A. switch(config-apple)# event snmp 1.3.6.1.4.1.9.9.109.1.1.1.1.6.1 get-type exact entry-op ge entry-val 50 poll-interval 1  
switch(config-apple)# action 0.2 cli enable  
switch(config-apple)# action 0.5 cli switchto vdc Core  
switch(config-apple)# action 0.8 cli switchto vdc Distribution
- A. switch(config-apple)# event snmp oid 1.3.6.1.4.1.9.9.109.1.1.1.1.6.1 get-type exact entry-op ge entry-val 50 poll-interval 1  
switch(config-apple)# action 0.2 cli enable  
switch(config-apple)# action 0.5 cli switchto vdc Core  
switch(config-apple)# action 0.8 cli switchto vdc Distribution
- B. switch(config-apple)# event snmp oid 1.3.6.1.4.1.9.9.109.1.1.1.1.6.1 get-type exact entry-op ge entry-val 50 poll-interval 1  
switch(config-apple)# action 0.2 cli config t  
switch(config-apple)# action 0.5 cli switchto vdc Core  
switch(config-apple)# action 0.8 cli switchto vdc Distribution
- C. switch(config-apple)# event snmp 1.3.6.1.4.1.9.9.109.1.1.1.1.6.1 get-type exact entry-op ge entry-val 50 poll-interval 1  
switch(config-apple)# action 0.2 cli config t  
switch(config-apple)# action 0.5 cli switchto vdc Core  
switch(config-apple)# action 0.8 cli switchto vdc Distribution

**Correct Answer: B**

**Section:**

**Explanation:**

Need exact snap shot to confirm the following.

The selection of is due to SNMP command has the key word "oid".

The command "switchto vdc Core" show run in "enable" mode, not "config t" mode.

### QUESTION 39

An engineer must place a Cisco UCS B-Series Server in a single server pool in Cisco UCS Manager. The engineer creates a qualification policy, but the server is still seen in multiple pools. Which two actions resolve the issue? (Choose two.)

- A. Select the Server Pool Policy Qualification from the qualification drop-down menu in the Server Pool Policy
- B. Select the Server Pool Policy from the qualification drop-down menu in the Server Pool Policy Qualification
- C. Set the operating system qualifier inside the Server Pool Policy Qualification
- D. Set the number of vNICs qualifier inside the Server Pool Policy.
- E. Set the storage capacity qualifier inside the Server Poo. Policy Qualification.

**Correct Answer: A, C**

**Section:**



#### QUESTION 40

Refer to the exhibit.

```
%ZONE-2-ZS_MERGE_FAILED: %$VSAN 1%$ Zone merge failure, isolating interface fc2/1 error:
Received rjt from adjacent switch:[reason:0]

%ZONE-2-ZS_MERGE_FAILED: %$VSAN 1%$ Zone merge failure, isolating interface fc1/2 error:
Member mismatch

%ZONE-2-ZS_MERGE_ADJ_NO_RESPONSE: Adjacent switch not responding, isolating interface

%ZONE-2-ZS_MERGE_FULL_DATABASE_MISMATCH: Zone merge full database mismatch on interface
```

An engineer deploys SAN environment with two interconnected Cisco MDS 9000 Series switches. When the engineer attempts a zone merge, it fails with the error that is presented in the exhibit. Which action resolves the issue?

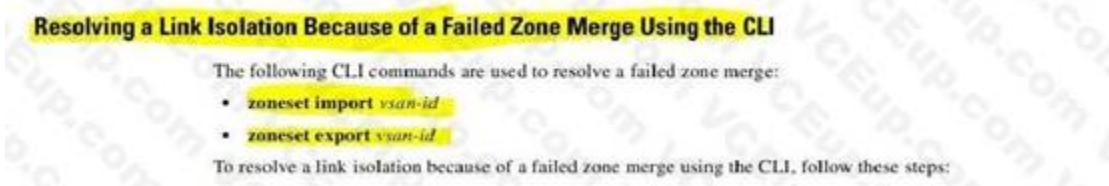
- A. Import or export a zone set between the switches to synchronize the switches.
- B. Change the name of one of the zones to match the other zone set.
- C. Set the distribute policy of the zone to full.
- D. Ensure that the zone members have different names.

**Correct Answer: D**

**Section:**

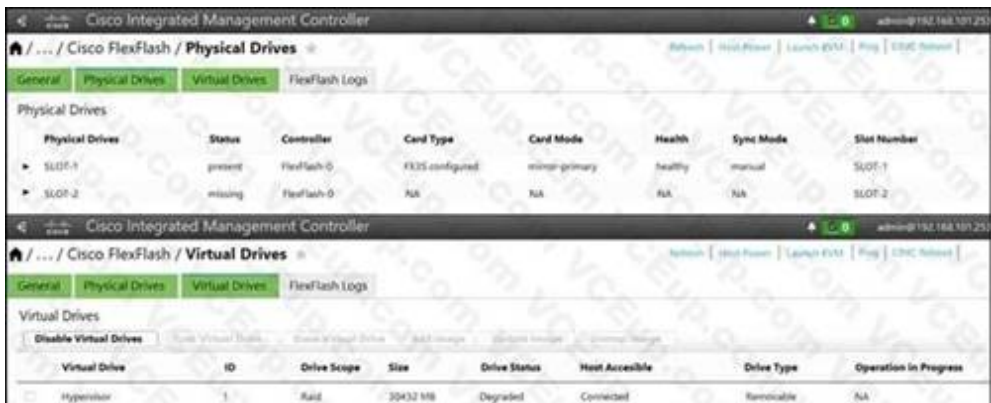
**Explanation:**

[https://www.cisco.com/en/US/docs/storage/san\\_switches/mds9000/sw/rel\\_3\\_x/troubleshooting/guide/ts\\_guide.pdf](https://www.cisco.com/en/US/docs/storage/san_switches/mds9000/sw/rel_3_x/troubleshooting/guide/ts_guide.pdf)



#### QUESTION 41

Refer to the exhibit.



During implementation of a Cisco UCS C-Series Server, an engineer receives the status that is shown in the exhibit. Which action resolves the issue.

- A. Reconfigure the Drive Type from "Removable" to "Non-Removable"
- B. Insert an SD card into SLOT-2
- C. Configure the RAID that is associated with the card.
- D. Set SLOT-1 Sync Mode to "Auto"

**Correct Answer: B**

**Section:**

#### QUESTION 42

Refer to the exhibit.

```
interface Vlan300
 hsrp version 2
 hsrp 300
 preempt
 priority 110
 timers 5 15
 ip 10.120.100.1
```

An engineer troubleshoots the HSRP configuration and notes that the remote end uses HSRP version 1. The engineer sets the local HSRP to version 1, but the problem continues. Which action resolves the issue?

- A. Change the local group number to 255 or less and request that the remote data center matches the group member in its configuration.
- B. Set the local group number as 300 in the remote data center configuration
- C. Run version 1 and version 2 HSRP on VLAN300 in the local data center.
- D. Reduce the priority of the local HSRP to below 100 to force the local HSRP to standby and then change the version to version 1.

**Correct Answer: A**

**Section:**

**Explanation:**

[https://www.cisco.com/c/en/us/td/docs/ios-xml/ios/ipapp\\_fhrp/configuration/xr-16/fhrp-xr-16-book/fhrp-hsrp-v2.pdf](https://www.cisco.com/c/en/us/td/docs/ios-xml/ios/ipapp_fhrp/configuration/xr-16/fhrp-xr-16-book/fhrp-hsrp-v2.pdf)

#### HSRP Version 2 Design

HSRP version 2 is designed to address the following restrictions in HSRP version 1:

- In HSRP version 1, millisecond timer values are not advertised or learned. HSRP version 2 advertises and learns millisecond timer values. This change ensures stability of the HSRP groups in all cases.
- In HSRP version 1, group numbers are restricted to the range from 0 to 255. HSRP version 2 expands the group number range from 0 to 4095.
- HSRP version 2 provides improved management and troubleshooting. With HSRP version 1, you cannot use HSRP active hello messages to identify which physical device sent the message because the source

#### QUESTION 43

During a boot process of a Cisco UCS C-Series Rack Server, an engineer receives a "No Signal" message from the vKVM and physical connection. Which set of steps resolves the issue?

- A. 1- Disconnect the power cord  
2- Confirm that all cards are property seated  
3- Connect the power cord and power on the server
- A. 1- Power off the server and disconnect the power cord  
2- Confirm that all cards are property seated  
3- Connect the power cord and power on the server

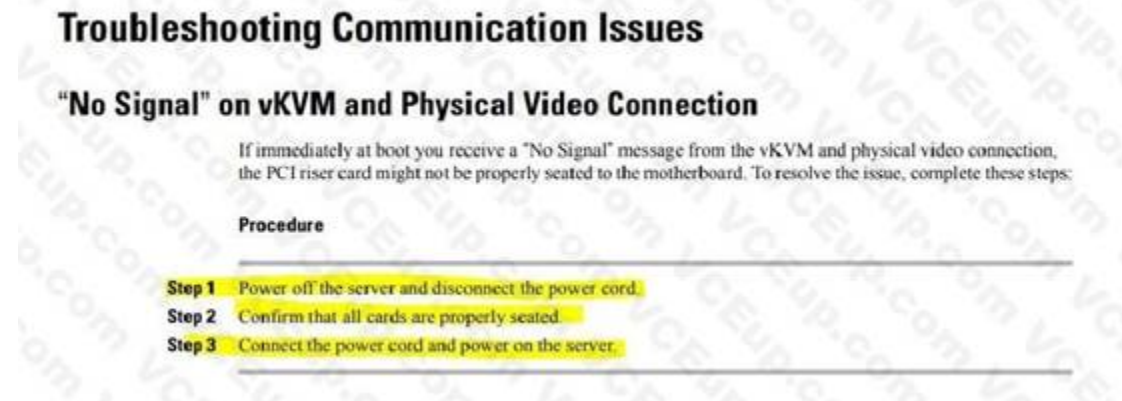
- B. 1- Power off the server and disconnect the power cord  
2- Confirm that all cards are available  
3- Connect the power cord and power on the server
- C. 1- Disconnect the power cord  
2- Confirm that all cards are properly seated  
3- Connect the power cord

**Correct Answer: B**

**Section:**

**Explanation:**

[https://www.cisco.com/c/en/us/td/docs/unified\\_computing/ucs/c/ts/guide/b\\_CSeries\\_Troubleshooting\\_Guide.pdf](https://www.cisco.com/c/en/us/td/docs/unified_computing/ucs/c/ts/guide/b_CSeries_Troubleshooting_Guide.pdf)



#### QUESTION 44

An engineer must configure Linux hosts that are deployed on Cisco UCS B-Series Servers to boot from SAN. The SAN boot policy is configured in Cisco UCS Manager, and the boot order is verified to be set as expected. However, the Linux hosts fail to boot. Which action resolves the issue?

- A. Remove all of the local storage that is installed
- B. Delete and reconfigure the pWWN of the SAN boot target
- C. Remove all of the ISO images that are mounted as a virtual CD-ROM
- D. Delete and reconfigure the boot LUN

**Correct Answer: A**

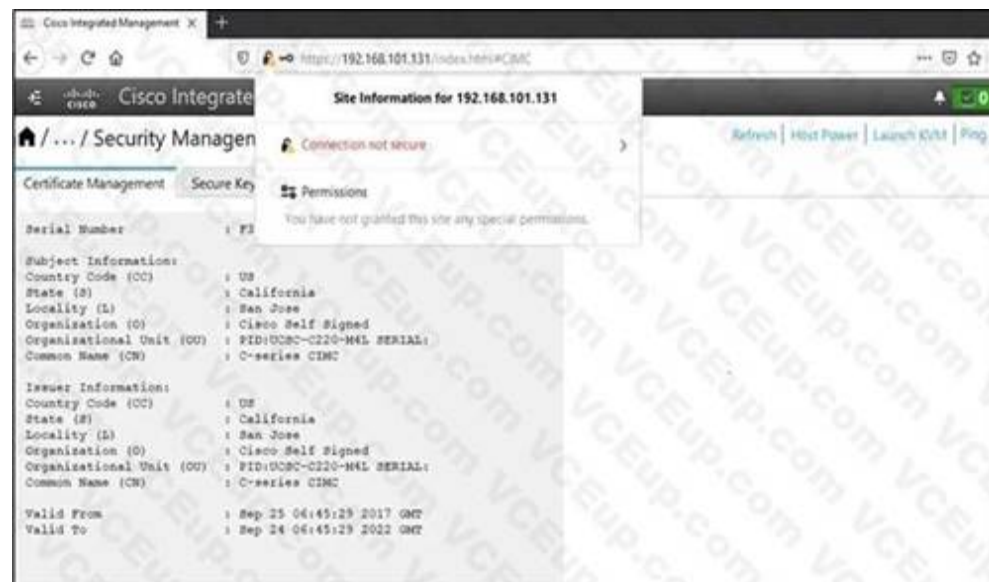
**Section:**

**Explanation:**

Reference: [https://www.cisco.com/c/en/us/td/docs/unified\\_computing/ucs/sw/cli/config/guide/2-2/b\\_UCSM\\_CLI\\_Configuration\\_Guide\\_2\\_2/configuring\\_server\\_boot.pdf](https://www.cisco.com/c/en/us/td/docs/unified_computing/ucs/sw/cli/config/guide/2-2/b_UCSM_CLI_Configuration_Guide_2_2/configuring_server_boot.pdf) page 5

#### QUESTION 45

Refer to the Exhibit.



An Engineer cannot log in to the Cisco IMC page of the Cisco UCS C220 server. Which action resolve the issue?

- A. Set the FQDN of the Cisco IMC webpage login page instead of the IP address for the connection to be secure.
- B. Use the DNS of the Cisco IMC webpage login page instead of the IP address for the connection to be secure.
- C. Replace the self-signed certificate that is installed on the Cisco IMC with a server certificate that is signed from the client corporate certificate.
- D. Replace the self-signed certificate that is installed on the Cisco IMC with a user certificate that is signed from the client corporate certificate.

**Correct Answer: C**

**Section:**

#### QUESTION 46

An engineer troubleshoots a VXLAN EVPN data center. The applications in the data center fail to reach the DNS server that is located at IP 10.10.10.10. The engineer examines the BGP EVPN routing table and notes that the IP prefix route covers the DNS server is missing. Which action resolve the issue?

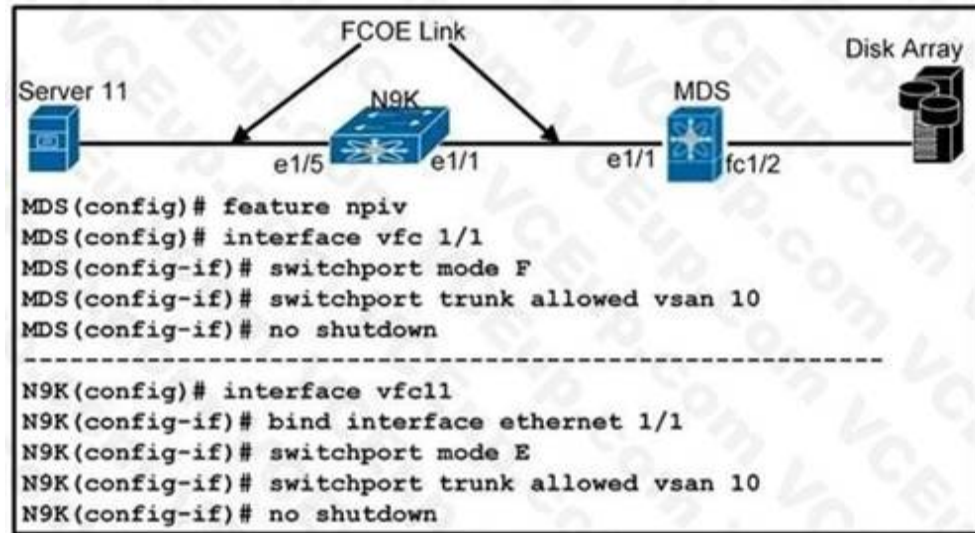
- A. Set the IP prefix route to represent [5]:[0]:[0]:[32]:[10.10.10.10]/224 in the routing table.
- B. Configure an IP ARP entry to represent [2]:[0]:[0]:[48]:[0050.569f.1285]:[32]:[10.10.10.10]/272 in the routing table
- C. Set the IP prefix route to represent [2]:[0]:[0]:[48]:[0050.569f.1285]:[0]:[0.0.0.0]/216 in the routing table
- D. Configure an IP ARP entry to represent [4]:[0300.0000.00fc.bd00.0309]:[32]:[10.10.10.10]/136,n the routing table

**Correct Answer: A**

**Section:**

#### QUESTION 47

Refer to the exhibit.



Refer to the exhibit. A network engineer is configuring the FCoE N\_Port virtualization storage area network. After the initial implementation, server 11 fails to connect to the disk array. Which action resolves the issue?

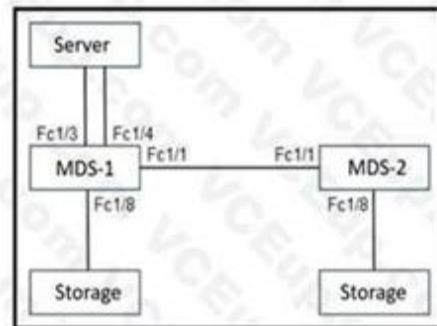
- A. On MDS interface vfc 1/1, change switchport mode configuration to VF
- B. On N9K interface vfc11, change switchport mode configuration to NP
- C. On N9K interface vfc11 and MDS interface vfc 1/1, change switchport mode configuration to F
- D. On N9K interface vfc11 and MDS interface vfc 1/1, change switchport mode configuration to E

**Correct Answer: D**

**Section:**

**QUESTION 48**

Refer to the exhibit.



```

MDS1 (config)# fabric-binding activate vsan 101 force
2020 Aug 18 06:56:52 MDS1 %PORT-SECURITY-3-BINDING CONFLICT: %$VSAN 101%$
MDS1 (config)# 2020 Aug 18 06:56:52 MDS1 %PORT-5-IF_TRUNK_DOWN: %$VSAN 101%$
Interface fcl/1, vsan 101 is down (Isolation due to fabric binding:
peer switch WWN not found)

```

Refer to the exhibits. An engineer is implementing the SAN based on the Cisco MDS 9000 Series Switches. When operating the environment, the engineer encounters the error shown. Which action resolves the issue?

- A. Copy VSAN 101 to the fabric binding database on the MDS-1 switch
- B. Add the World Wide Name of the neighboring switch to the MDS-1 switch
- C. Configure the port security feature on the MDS-1 switch
- D. Enable VSAN 101 on the peer MDS 2 switch fabric interconnect

**Correct Answer: B**

**Section:**

**Explanation:**

Reference:

<https://overlaid.net/2014/08/22/fc-security-for-ccie-dc-fabric-binding/>

**QUESTION 49**

When the engineer runs the command, this error is received: `opsengineer@wkst1:/home/auto/bash_scripts$ curl -s -b cookie_file_39422186.txt -X GET -k 192.15.132.101/api/node/class/Tenant.json {"totalCount": "1", "imdata": [{"error": {"attributes": {"code": "400", "text": "Request failed, (output omitted)"}}}]} Which action resolves the issue?`

- A. Regenerate the API token object
- B. Modify the URI to `192.15.132.101/api/node/class/fvTenant.json`
- C. Add the `-c class Tenant` flag to the cURL command
- D. Change the HTTP verb to POST

**Correct Answer: B**

**Section:**

**Explanation:**

Reference:

<https://www.ciscolive.com/c/dam/r/ciscolive/emea/docs/2019/pdf/DEVNET-2000.pdf>

**QUESTION 50**

Refer to the exhibit.

```
event manager applet ConfigNotifier
event cli match "conf t"
action 1.0 snmp-trap strdata "Configuration change"
```

Refer to the exhibit. A network engineer creates an EEM script to trigger an SNMP notification when a user enters configuration mode, but the trap is not received when the condition is met. Which action resolves the issue?

- A. Append action 2.0 event-default to the script
- B. Append action 2.0 cli "conf t" to the script
- C. Modify snmp-trap strdata "Configuration changed" to syslog msg Configuration changed
- D. Modify cli match "conf t" to "snmp match "conf t"

**Correct Answer: A**

**Section:**

**Explanation:**

Reference:

[https://www.cisco.com/c/en/us/td/docs/switches/datacenter/nexus9000/sw/6-x/system\\_management/configuration/guide/b\\_Cisco\\_Nexus\\_9000\\_Series\\_NXOS\\_System\\_Management\\_Configuration\\_Guide/sm\\_12eem.html](https://www.cisco.com/c/en/us/td/docs/switches/datacenter/nexus9000/sw/6-x/system_management/configuration/guide/b_Cisco_Nexus_9000_Series_NXOS_System_Management_Configuration_Guide/sm_12eem.html)

**QUESTION 51**

Refer to the exhibit.

```

switch# config t
switch(config)# event manager applet track_int_up
switch(config-applet)# event track 1 state up
switch(config-applet)# action 1 syslog msg EEM applet track_int_down
bringing up port eth1/2 due to eth1/1 being down
switch(config-applet)# action 2 cli interface ethernet 1/2
switch(config-applet)# action 3 cli no shut
switch(config-applet)# end

```

The script fails to bring up Ethernet 1/2 when Ethernet 1/1 goes down. Which change enables the script to run as intended?

- A. Set the port VLAN
- B. Include an action to manually shut down Ethernet 1/1
- C. Add an action to configure the terminal
- D. Configure an enable action

**Correct Answer: C**

**Section:**

#### QUESTION 52

Refer to the exhibit.

```

nx-os9000-1# show guestshell detail
Virtual service guestshell+ detail
State                : Activated
Package information
Name                 : guestshell.ova
Path                 : /isanboot/bin/guestshell.ova
Application
Name                 : GuestShell
Installed version    : 2.4(0.0)
Description          : Cisco Systems Guest Shell
Resource reservation
Disk                 : 250 MB
Memory               : 256 MB
CPU                  : 1% system CPU

nx-os9000-1# guestshell resize cpu 5
-- output omitted --
nx-os9000-1# guestshell resize rootfs 1500
-- output omitted --

nx-os9000-1# show guestshell detail
Virtual service guestshell+ detail
State                : Activated
Package information
Name                 : guestshell.ova
Path                 : /isanboot/bin/guestshell.ova
Application
Name                 : GuestShell
Installed version    : 2.4(0.0)
Description          : Cisco Systems Guest Shell
Resource reservation
Disk                 : 250 MB

```

Refer to the exhibit. A network engineer deploys scripts to the guest shell of a Cisco Nexus switch.

The scripts fail to operate properly due to the limited CPU and file system resources that are assigned by default to the guest shell. The engineer allocated more memory and disk space to the guest

shell, but the application continues to fail.  
Which action resolves the issue?

- A. Disable and enable bash shell
- B. Reboot the guest shell
- C. Redeploy the bash shell
- D. Upgrade the guest shell

**Correct Answer: B**

**Section:**

**Explanation:**

Reference:

<https://www.ciscolive.com/c/dam/r/ciscolive/us/docs/2018/pdf/BRKDCN-2015.pdf>

#### QUESTION 53

A network engineer discovers a DNS resolution problem on a device that is using the Cisco Nexus Bash shell.

The device name is app with an IP address of 10.10.10.1. The primary server IP address is 172.16.10.1 and the secondary server IP address is 172.16.10.2. When the abc.com resolution fails, it should attempt to use efg.com.

Which settings must be added to resolv.conf file to resolve the issue?

- A. 

```
search abc.com efg.com
nameserver 172.16.10.1
nameserver 172.16.10.2
```
- B. 

```
domain lookup abc.com efg.com
hostname 172.16.10.1
hostname 172.16.10.2
```
- C. 

```
hostname 172.16.10.1, 172.16.10.2
domain list abc.com, efg.com
```
- D. 

```
domain abc.com
nameserver 172.16.10.1
nameserver 172.16.10.2
```

- A. Option A
- B. Option B
- C. Option B
- D. Option D

**Correct Answer: A**

**Section:**

**Explanation:**

Reference:

<https://www.cisco.com/c/en/us/support/docs/switches/nexus-9000-series-switches/213959-nx-os-bash-shell-dns-configuration.html>

#### QUESTION 54





Refer to the exhibit.

```
N5K-1# show running-config aaa all
!
version 7.0(2)N2(1)
logging level aaa 5
aaa authentication login default group radius
aaa authentication login console group radius
aaa authorization ssh-publickey default local
aaa authorization ssh-certificate default local
aaa accounting default local
aaa user default-role
aaa authentication login default fallback error local
aaa authentication login console fallback error local
aaa authentication login error-enable
no aaa authentication login mschap enable
no aaa authentication login mscapv2 enable
no aaa authentication login chap enable
```

Refer to the exhibit. A functioning trunk port Ethernet1/48 exists between two identical Cisco Nexus 5000 Series Switches. The interfaces on the switches support the MACsec feature and are configured identically. To enable manual

MACsec, an engineer adds the configuration shown in the exhibit to both sides of the trunk. The trunk port stops functioning. Which action should be taken to resolve the issue?

- A. Disable and then enable the port
- B. Enable the license for the trunk ports to support MACsec
- C. Lower the MTU value to less than 9216 bytes
- D. Configure the PMK with a length of 2048 bytes

**Correct Answer: B**

**Section:**

#### QUESTION 55

Refer to the exhibit.

```
N5K# show interface ethernet1/10 brief
Ethernet1/10 is down (pauseRateLimitErrDisable)

%NOHMS-2-NOHMS_DIAG_ERROR: Module 1: Runtime diag detected pause rate limit
event: Port failure:

%ETHPORT-5-IF_DOWN_ERROR_DISABLED: Interface Ethernet1/10 is down (Error
disabled. Reason:error)
```

Refer to the exhibit. A network engineer is troubleshooting a Cisco Nexus 5000 Series Switch. The interface between the server and the switch is nonoperational and is expected to operate at 10 Gbps. The drain rate of the interface is 3 Mbps. Which action resolves the issue?

- A. Configure pause error-disable recovery
- B. Enable link level pause on the interface
- C. Reset priority flow counters
- D. Set priority flow control pause

**Correct Answer: A**

**Section:**

**Explanation:**

Reference:

[https://www.cisco.com/c/en/us/td/docs/switches/datacenter/nexus5000/sw/troubleshooting/guide/N5K\\_Troubleshooting\\_Guide/n5K\\_ts\\_fcoe.html](https://www.cisco.com/c/en/us/td/docs/switches/datacenter/nexus5000/sw/troubleshooting/guide/N5K_Troubleshooting_Guide/n5K_ts_fcoe.html)

#### QUESTION 56

Refer to the exhibit.

A customer network uses OSPFv2 and MP-BGP protocols. A network administrator installs a new Cisco Nexus Switch in the data center but experiences a BGP RIB failure. Which action solves the issue?

- A. Change the administrative distance of OSPF to 220
- B. Configure the route as a BGP backdoor
- C. Use a filter list for OSPF to filter both routes
- D. Implement next-hop-self

**Correct Answer: A**

**Section:**

#### QUESTION 57

An engineer is implementing a new BGP peering in their new data center. The engineer set up the BGP session that peers with the remote end. As soon as the BGP peers attempt to exchange routing prefixes, one of the BGP peers drops the connection. After reviewing the configuration, the engineer reviews the logging messages. The engineer discovers that the router is missing keepalives from the remote end and terminates the session. Which action resolves the issue?

- A. Set the bgp transport path-mtu-discovery attribute on both peers
- B. Set the higher values for the BGP keepalive and hold-down timers on both peers
- C. Configure the matching BGP AS numbers between the peers
- D. Configure the matching BGP passwords between the peers

**Correct Answer: B**

**Section:**

**QUESTION 58**

Refer to the exhibit.

```

switch1# show vpc consistency-parameters global
Legend:
Type 1 : vPC will be suspended in case of mismatch
Name          Type      Local Value          Peer Value
-----
Cos            1         ((1, (3), (1), (1), (1, (1)) (1), (3), (1), (1), (1, (1))
Network QoS (MTU) 1         (9216, 2240, 0, 0, 0, 0)      (9116, 2240, 0, 0, 0, 0)
Network QoS (Pause) 1         (F, T, F, F, F, F)           (F, T, F, F, F, F)
Input Queuing (Bandwidth) 1         (50, 50, 0, 0, 0, 0)         (50, 50, 0, 0, 0, 0)
Input Queuing (Absolute Priority) 1         (F, F, F, F, F, F)           (F, F, F, F, F, F)
Output Queuing (Bandwidth) 1         (50, 50, 0, 0, 0, 0)         (50, 50, 0, 0, 0, 0)
Output Queuing (Absolute Priority) 1         (F, F, F, F, F, F)           (F, F, F, F, F, F)
STP Mode       1         Rapid-PVST                   Rapid-PVST
STP Disabled   1         None                          None
STP MST Region Name 1         ""                             ""
STP MST Region Revision 1         0                              0
STP MST Region Instance 1         to VLAN Mapping
STP Loopguard  1         Disabled                      Disabled
STP Bridge Assurance 1         Enabled                       Enabled
STP Port Type, Edge 1         Normal, Disabled             Normal, Disabled
BPDUFilter, Edge BPDUGuard 1         Disabled                      Disabled
STP MST Simulate PVST 1         Enabled                       Enabled
Allowed VLANs  1         1, 19, 91, 99, 120, 757-446    1, 10, 19-20, 91, 99, 400-401
Local suspended VLANs 120                          403, 420, 440, 442, 444

```

The vPC neighborship between two switches is in suspended state. Which configuration change resolves the issue and brings up the vPC neighborship?

- A. Change STP Port Type to Network on the peer switch
- B. Enable Bridge Assurance on the local switches
- C. Configure QoS MTU value of 9216 on the peer switch
- D. Add VLAN 400-401 to the configuration on the local switch

**Correct Answer: C**

**Section:**

**Explanation:**

Reference:

[https://www.cisco.com/c/en/us/td/docs/switches/datacenter/nexus5000/sw/troubleshooting/guide/N5K\\_Troubleshooting\\_Guide/n5K\\_ts\\_vpc.pdf](https://www.cisco.com/c/en/us/td/docs/switches/datacenter/nexus5000/sw/troubleshooting/guide/N5K_Troubleshooting_Guide/n5K_ts_vpc.pdf)

**QUESTION 59**

Refer to the exhibit.

UCS Central Registration Policy Resolution Control

FSM Status : **In Progress**

Description :

Current FSM Name : **Repair Cert**

Completed at :

Progress Status : **0%**

Remote Invocation Result : **Resource Unavailable**

Remote Invocation Error Code : **5**

Remote Invocation Description : **UCSM and UCS Central time is not synchronized. Retrying...**

Step Sequence

Order	Name	Description	Status	Timestamp	Retried
1	Repair Cert Verify GUID	verifying GUID of UCS Cr...	In Progress		1
2	Repair Cert Unregister		Pending		0
3	Repair Cert Clean Old Data		Pending		0
4	Repair Cert Request		Pending		0
5	Repair Cert Verify		Pending		0

The integration between Cisco UCS Manager and Cisco UCS Central failed. Which action resolves the issue?

- A. Implement the consistent NTP source between the appliances
- B. Implement the connectivity between the appliances through a firewall
- C. Configure the certificate between the appliances
- D. Configure the shared secret key between the appliances

**Correct Answer: A**

**Section:**

**QUESTION 60**

Refer to the exhibit.

Fault Properties

General Troubleshooting History

Fault Code: F3208

Severity: major

Last Transition: 2020-07-07T14:42:49.161+03:00

Lifecycle: Soaking

Affected Object: edm/Mgr-[UCS\_C1]-UCS\_C1

Description: Fault delegate; Connection to External Device: 172.16.105.50 with name UCS\_C1 is failing to connect with the error: [Failed to connect with Integration Manager]. Please verify network connectivity of External Device and that user credentials are valid.

Type: Communications

Cause: connect-failed

Change Set: issues (Old: , New: connection-fault)

Created: 2020-07-07T14:42:49.161+03:00

Code: F3208

Number of Occurrences: 1

Original Severity: major

Previous Severity: major

Highest Severity: major

An engineer fails to implement a Cisco UCS Manager integration manager. The credentials and IP connectivity between Cisco APIC and UCS Manager are configured as expected. Which action resolves the issue?

- A. Disable HTTP to HTTPS redirection in Cisco UCS Manager
- B. Enable JSON API on the Cisco UCS Manager
- C. Change the Integration Manager name to FQDN of the Cisco UCS Manager
- D. Install ExternalSwitch app in the APIC controller

**Correct Answer: D**

**Section:**

**Explanation:**

Reference: [https://www.cisco.com/c/en/us/td/docs/switches/datacenter/aci/apic/sw/4-x/virtualization/Cisco-ACI-Virtualization-Guide-411/Cisco-ACI-Virtualization-Guide-411\\_chapter\\_01110.html](https://www.cisco.com/c/en/us/td/docs/switches/datacenter/aci/apic/sw/4-x/virtualization/Cisco-ACI-Virtualization-Guide-411/Cisco-ACI-Virtualization-Guide-411_chapter_01110.html)

**QUESTION 61**

A network engineer experiences the error “DDR3\_P1\_B1\_ECC” when upgrading Cisco UCS firmware. Which action resolves the issue?

- A. Reset the DIMM
- B. Reset the BMC firmware
- C. Reflash the controller firmware
- D. Reflash the DIMM

**Correct Answer: A**

**Section:**

**QUESTION 62**

Refer to the exhibit.

```

Booting kickstart image: bootflash:/installables/switch/ucs-6100-k9-kickstart.4
.1.2.N2.1.11.bin...Loader Version pr-1.3

loader> dir
bootflash:
  lost+found
  ucs-6100-k9-kickstart.4.1.3.N2.1.11.bin
  ucs-6100-k9-system.4.1.3.N2.1.11.bin
  sysdebug
  chassis.img
  nuova-sim-mgmt-nsg.0.1.0.001.bin
  pnuos
  installables
  mts.log
  vdc_2
  vdc_3
  vdc_4
  distributables
  initial_setup.log
  tmp
  .tmp-kickstart
  .tmp-system

loader>

```

A Cisco UCS Fabric Interconnect fails during the upgrade process. The working images of the fabric interconnect are stored on the bootflash. Which set of commands recovers the fabric interconnect?

- A. loader> dir
- loader> boot ucs-6300-k9-kickstart.5.0.2.N1.3.02d56.bin
- switch(boot)# init system
- switch(boot)# reload
- switch(boot)# load ucs-6300-k9-system.5.0.2.N1.3.02d56.bin

- A. loader> dir
- loader> boot ucs-6300-k9-kickstart.5.0.2.N1.3.02d56.bin



```
switch(boot)# copy ics-manager-k9.1.4.1k.bin nuova-sim-mgmt-nsg.0.1.001.bin
switch(boot)# boot ucs-6300-k9-system.5.0.2.N1.3.02d56.bin
```

- B. loader> dir  
loader> boot ucs-6300-k9-kickstart.5.0.2.N1.3.02d56.bin  
switch(boot)# init system  
switch(boot)# reload  
switch(boot)# boot ucs-6300-k9-system.5.0.2.N1.3.02d56.bin
- C. loader> dir  
loader> boot ucs-6300-k9-kickstart.5.0.2.N1.3.02d56.bin  
switch(boot)# copy ics-manager-k9.1.4.1k.bin nuova-sim-mgmt-nsg.0.1.001.bin  
switch(boot)# load ucs-6300-k9-system.5.0.2.N1.3.02d56.bin

**Correct Answer: D**

**Section:**

### QUESTION 63

Refer to the exhibit.

```
Unable to change server power state-MC
Error(-20): Management controller cannot or
failed in processing
request(sam:dme:ComputePhysicalTurnup:Execute
)

[ help ]# power
OP:[ status ]
Power-State:      [ on ]
VDD-Power-Good:   [ active ]
Power-On-Fail:    [ inactive ]
Power-Ctrl-Lock:  [ unlocked ]
Power-System-Status: [ Good ]
Front-Panel Power Button: [ Enabled ]
Front-Panel Reset Button: [ Enabled ]
OP-CCODE: [ Success ]
[ power ]#
```

An engineer monitors a Cisco UCS server logs and discovers a blade discovery issue. Which procedure resolves the issue?

- A. 1. Verify the server power module.
- A. Decommission the faulty module.  
B. Insert a new power module.  
C. Recommission the new module.  
D. 1. Verify that server platform power is failed  
E. Resolve the platform power issue.  
F. Reboot the server.  
G. Recommission the server.  
H. 1. Verify the FSM status on the server.  
I. Decommission the impacted server.

- J. Reset the slot where the server is located.
- K. Recommission the server.
- L. 1. Verify that the power on self-test operation is failed.
- M. Verify that the server firmware is corrupted.
- N. Decommission the server firmware
  - 4. Recommission the server with new firmware.

**Correct Answer: C**

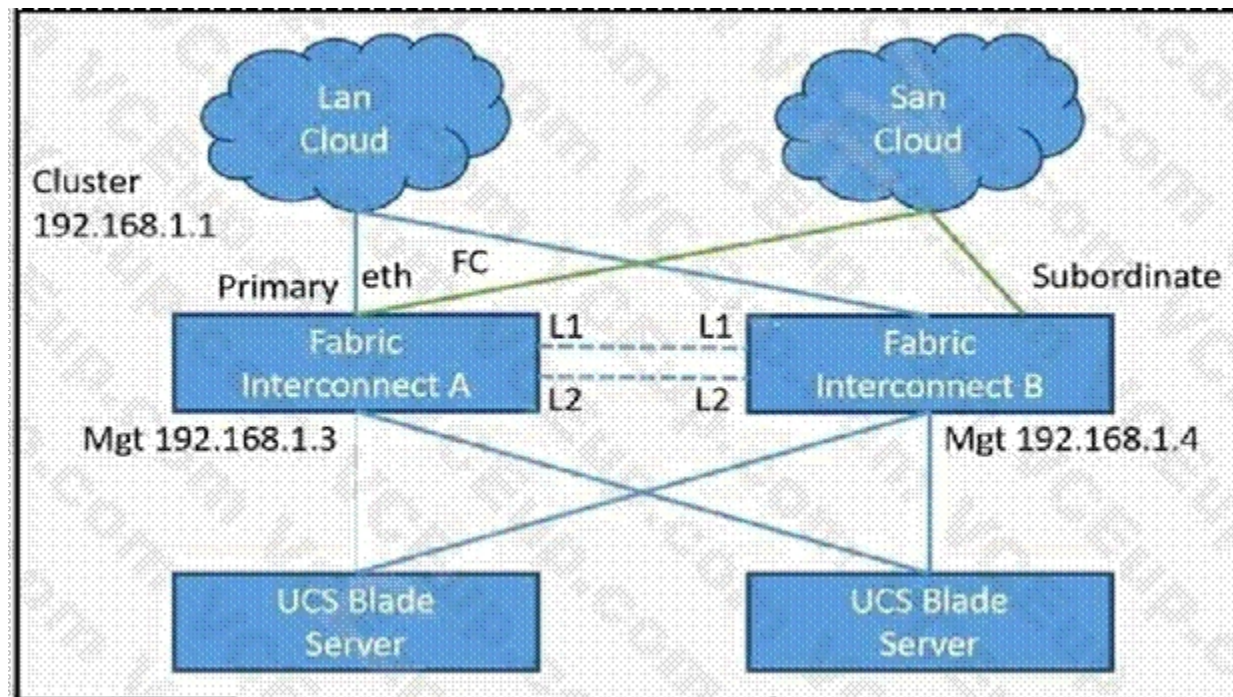
**Section:**

**Explanation:**

Reference: <https://www.cisco.com/c/en/us/support/docs/servers-unified-computing/unifiedcomputing-system/214047-troubleshooting-ucs-blade-discovery-issu.pdf>

**QUESTION 64**

Refer to the exhibit.



A network engineer finds one of the fabric interconnects offline when connecting L1 and L2 ports on both fabric interconnects. Which action resolves the issue?

- A. 1. Connect to Fabric Interconnect B.
- A. Verify the cluster status and HA election.
- B. Validate Fabric Interconnect B hardware issues.
- C. 1. Connect to Fabric Interconnect A.
- D. Verify the cluster status and HA election.
- E. Validate Fabric Interconnect A hardware issues.
- F. 1. Connect Fabric Interconnect B and change the role to primary.
- G. Reboot Fabric Interconnect B.
- H. Add the Fabric Interconnect A as subordinate fabric to the cluster.
- I. 1. Connect Fabric Interconnect B and execute "Erase configuration"
- J. Reboot Fabric Interconnect B.
  - 3. Add the subordinate Fabric Interconnect to the cluster.

**Correct Answer: D**

**Section:**

**QUESTION 65**

Refer to the exhibit.

```
Booting kickstart image: bootflash:/nxos.7.0.3.l7.4.bin
CardIndex = 11056

Couldn't read file. Expected 392e9000 Got ffffffff
File does not exist, boot failed.

error: Vendor info. Expected 1024 Read-1

loader>
```

A network engineer upgrades the firmware of a Cisco Fabric Interconnect from boot flash. During the process, the fabric interconnect reboots and displays the message shown in the exhibit. Which action resolves the issue?

- A. Remove the service pack and upgrade through the auto-install procedure
- B. Reset the I/O module and install the firmware image from the boot flash
- C. Boot the kickstart image from boot flash and load the system image
- D. Reload the switch and boot the kickstart image from the TFTP server

**Correct Answer: D**

**Section:**

**QUESTION 66**

Refer to the exhibit.

```

UCS-LAB-IC-1-A# connect adapter 1/1/1
adapter 1/1/1 # connect
No entry for terminal type "vt220";
using dumb terminal settings.

adapter 1/1/1 (top):1# attach-mcp
No entry for terminal type "vt220";
using dumb terminal settings.

vnic iSCSI Configuration:
-----

vnic_id: 5
    link_state: Up

    Initiator Cfg:
    initiator_state: ISCSI_INITIATOR_READY
    initiator_error_code: ISCSI_BOOT_NIC_NO_ERROR
    vlan: 0
    dhcp status: false
    IQN: iqn.2013-01.com.myserver124
    IP Addr: 10.68.68.2
    Subnet Mask: 255.255.255.0
    Gateway: 10.68.68.254

Target Cfg:
    Target Idx: 0
    State: INVALID
    Prev State: ISCSI_TARGET_GET_LUN_INFO
    Target Error: ISCSI_TARGET_GET_HBT_ERROR
    IQN: iqn.1992-08.com.netapp:sn.1111111
    IP Addr: 10.78.78.20
    Port: 3260
    Boot Lun: 0
    Ping Stats: Success (8.112ms)

```

A Cisco UCS B-Series Blade Server is configured to boot from a shared storage via an iSCSI network. When a service profile is associated with the blade, the blade fails to attach the LUN. Which action resolves the issue?

- A. Place VLAN 0 on the interface that connects to the storage
- B. Register the blade as an initiator on the storage array
- C. Implement a Layer 3 connection between the blade and the storage
- D. Establish a Layer 2 connection between the blade and the storage

**Correct Answer: A**

**Section:**

**Explanation:**

Reference: <https://www.cisco.com/c/en/us/support/docs/servers-unified-computing/ucsmanager/116003-iscsi-ucs-config-00.html>

**QUESTION 67**

Refer to the exhibit.

```
FI-A(nxos)# show int vfc 952
vfc952 is down (Error Disabled - VLAN L2 down on Eth interface)
Bound interface is Vethernet9155
Port description is server 1/5, VHBA fc0
Hardware is Ethernet
Port WWN is 23:c2:00:de:fb:2b:e6:ff
Admin port mode is F, trunk mode is on
snmp link state traps are enabled
Port vsan is 100
1 minute input rate 0 bits/sec, 0 bytes/sec, 0 frames/sec
1 minute output rate 0 bits/sec, 0 bytes/sec, 0 frames/sec
0 frames input, 0 bytes
0 discards, 0 errors
0 frames output, 0 bytes
0 discards, 0 errors
```

A network engineer is implementing a Cisco UCS environment. The environment consists of eight servers configured with the same service profile template and Windows 2012 installed. The VFC interfaces of five of these servers are showing the error shown in the exhibit. Which action resolves the issue?

- A. Modify the vHBAs name in the storage connectivity policy
- B. Configure upstream zoning
- C. Decommission and recommission the servers
- D. Modify the boot order in the boot policy

**Correct Answer: C**

**Section:**

**QUESTION 68**

Refer to the exhibit.

Selected	ID	Name	Role	Model	Current Firmware	Target Firmware	Status
<input type="checkbox"/>	Pod1/101	leaf-1	leaf	N9K-C9396PX	4.1(1K)	4.1(1K)	Not Scheduled
<input type="checkbox"/>	Pod1/101	leaf-2	leaf	N9K-C9396PX	4.1(1K)	4.1(1K)	Not Scheduled
<input type="checkbox"/>	Pod1/101	spine-1	spine	N9K-C9508	4.1(1K)	4.1(1K)	Not Scheduled

A client configures an upgrade of its Cisco Nexus switches that are connected to the Cisco ACI controller, such that the switches are upgraded one at a time. After the upgrade is run, it is discovered that both Cisco Nexus switches were upgraded simultaneously. Which two actions ensure that the switches upgrade one at a time? (Choose two.)

- A. Configure the "Do not pause on failure and do not wait on cluster health" Run Mode

- B. Choose the "Pause upon upgrade failure" Run Mode
- C. Select the "Graceful Maintenance" checkbox
- D. Place each leaf switch in a different upgrade group
- E. Check the "Ignore Compatibility" checkbox

**Correct Answer: C, D**

**Section:**

**Explanation:**

Reference:

[https://www.cisco.com/c/en/us/td/docs/unified\\_computing/ucs/ts/guide/UCSTroubleshooting/UCSTroubleshooting\\_chapter\\_0100.html](https://www.cisco.com/c/en/us/td/docs/unified_computing/ucs/ts/guide/UCSTroubleshooting/UCSTroubleshooting_chapter_0100.html)

#### QUESTION 69

Refer to the exhibit.

```
Test-5548-A# sh int fc2/12
sh int fc2/12 is down (NPV upstream port not available)
Hardware is Fibre Channel, SFP is short wave laser w/o OFC (SN)
Port WWN is 20:47:00:0d:ec:a4:3b:80
Admin port mode is F, trunk mode is off
snmp link state traps are enabled
Port vsan is 99
Receive data field Size is 2112
```

An engineer configures the server port on a Cisco Nexus 5000 Series Switch. The switch connects to an NPV edge switch port. The server fails to send the FC traffic to the fabric. Which action resolves the issue?

- A. Enable the NPIV mode on the Cisco Nexus 5000 switch.
- B. Match the VSAN membership on both ends of the connection.
- C. Configure the BB\_credit buffer on the uplink port.
- D. Replace the SFP in slot fc2/12.

**Correct Answer: B**

**Section:**

#### QUESTION 70

An engineer configures FCoE between a set of ESXi hosts and a Cisco Nexus 5000 Series Switch. The Converged Network Adapter of the host fails to receive the response from the Cisco Nexus device. Also, the VFC interface is in a down state and the FIP adapter fails to receive 802.1q tagged frames. The host interface is configured for VLAN trunking. Which action resolves the issue?

- A. Activate the reception of Xoff pause frames from the server
- B. Configure the UF link as a spanning-tree edge port
- C. Enable the active STP port state on the bound Ethernet interface
- D. Set the bound Ethernet trunk interface to non-FCoE native VLAN

**Correct Answer: B**

**Section:**

#### QUESTION 71

Refer to the exhibit.

```

n7k-1# show ip ospf neighbors
OSPF Process ID 1 VRF default
Total number of neighbors: 2
Neighbor ID      Pri State           Up Time  Address      Interface
198.18.5.1       1 EXSTART/BDR       00:00:11 198.18.5.1   Eth2/1
128.0.0.3        1 FULL/BDR         01:01:04 198.18.6.2   Eth2/2

```

A network engineer configures OSPF protocol between two Cisco Nexus 7000 Series Switches. The OSPF neighbors fail to synchronize OSPF databases. Which action resolves the issue?

- A. Match the OSPF area between the two devices.
- B. Configure the IP addresses of the interface in the same subnet.
- C. Change the OSPF area type to 2 on n7k-1.
- D. Set the same MTU values on both sides of the link.

**Correct Answer: D**

**Section:**

#### QUESTION 72

Refer to the exhibit.

```

Router#show ip ospf database router
OSPF Router with id(10.254.6.3) (Process ID 10)
Displaying Router Link States(Area 0.0.0.0)
LS age: 1376
Options: (No TOS-capability)
LS Type: Router Links
Link State ID: 192.168.19.23
Advertising Router: 192.168.19.23
LS Seq Number: 800070A3
Checksum: 0x5C91
Length: 96
AS Boundary Router
155 Number of Links: 4
Link connected to: another Router (point-to-point)
(link ID) Neighboring Router ID: 10.254.6.3
(Link Data) Router Interface address: 192.168.19.23
Number of TOS metrics: 0
TOS 0 Metrics: 0

```

A network engineer is implementing a pair of Cisco Nexus 9000 Series Switches. During the OSPF configuration, the engineer discovers unstable routing in the network. The investigation shows flapping routes after the new switches were introduced. Which set of actions resolves the issue?

- A. Configure a new IP address on the Ethernet interface toward the OSPF neighbor. Clear the OSPF neighbor.
- B. Configure a new IP address on the Ethernet interface toward the OSPF neighbor. Clear the OSPF process.
- C. Configure a new OSPF priority on the Ethernet interface toward the OSPF neighbor. Clear the OSPF neighbor.
- D. Configure a new IP address on the Loopback interface for the OSPF process. Clear the OSPF process

**Correct Answer: A**

**Section:**

QUESTION 73

Refer to the exhibit.

```
ficl-mgmt-A# show cluster state
```

```
Cluster Id: 0xfe92119409cf1111-0x81a200defbec3111
```

```
A: UP, PRIMARY
```

```
B: UP, SUBORDINATE
```

```
ficl-mgmt-A(nxos)# show fex 1 detail | exclude Down
```

```
FEX: 1 Description: FEX0001 state: Online
```

```
Pinning-mode: static Max-links: 1
```

```
Fabric port for control traffic: Eth1/4
```

```
FCoE Admin: false
```

```
FCoE Oper: true
```

```
FCoE FEX AA Configured: false
```

```
Fabric interface state:
```

```
Eth1/1 - Interface Up. State: Active
```

```
Eth1/2 - Interface Up. State: Active
```

```
Eth1/3 - Interface Up. State: Active
```

```
Eth1/4 - Interface Up. State: Active
```

```
Fex Port      State  Fabric Port
```

```
 Eth1/1/1    Up     Eth1/1
```



Eth1/1/3	Up	Eth1/1
Eth1/1/5	Up	Eth1/2
Eth1/1/7	Up	Eth1/2
Eth1/1/9	Up	Eth1/3
Eth1/1/11	Up	Eth1/3
Eth1/1/13	Up	Eth1/4
Eth1/1/15	Up	Eth1/4
Eth1/1/17	Up	Eth1/1
Eth1/1/19	Up	Eth1/1
Eth1/1/21	Up	Eth1/2
Eth1/1/23	Up	Eth1/2
Eth1/1/33	Up	Eth1/4

A network engineer needs to capture traffic from the VMs that utilize the IOM host interface Eth1/1/23 of a Cisco UCS B-Series chassis. A traffic analyzer is used to get traffic captured from the Eth1/4 interface of the subordinate fabric interconnect. The network engineer notices that traffic is not captured on the traffic analyzer. Which action resolves the issue?

- A. Span the traffic from the Eth 1/2 of the subordinate fabric interconnect.
- B. Span the traffic from the Eth 1/4 of the subordinate fabric interconnect.
- C. Span the traffic from the Eth 1/2 of the primary fabric interconnect.
- D. Span the traffic from the Eth 1/4 of the primary fabric interconnect.

**Correct Answer: D**

**Section:**

#### QUESTION 74

Refer to the exhibit.

```
N9K# show running-config eem
!Command: show running-config eem
!Running configuration last done at: Sun Jun  7 10:03:14 2020
!Time: Sun Jun  7 10:03:32 2020

version 9.2(2) Bios:version 05.33
event manager applet ConfigMgmt
  event cli match "copy running-config startup-config"
  action 2 syslog priority warnings msg Configuration Modified

N9K# copy run start
% Command blocked by event manager policy
```

An engineer must save the running configuration to startup-config and generate a syslog message indicating that the configuration was modified, but an error was received. Which action resolves the

issue?

- A. Change the syslog action number to 1.
- B. Save the configuration using a user with network-admin role.
- C. Use the extended command copy running-config startup-config.
- D. Add event-default as a second action of the EEM script.

**Correct Answer: D**

**Section:**

#### QUESTION 75

A network engineer must connect a Cisco UCS Fabric Interconnect cluster to the Cisco ACI. VMware ESXi hypervisors have been installed on Cisco UCS blades and a VMware VMM domain has been configured. However, virtual machines fail to reach their default gateway in the Cisco ACI Fabric. The engineer investigates the issue and notices that the VMware Distributed Switch (VDS) teaming policy is set to "Route based on IP hash". Which action resolves the issue?

- A. Configure the vSwitch Policy on the VMM domain.
- B. Disable the On-demand EPG resolution immediacy setting in ACI.
- C. Disable the VMware Network I/O Control on the VDS.
- D. Configure the vSwitch Policy on a VDS.

**Correct Answer: A**

**Section:**

#### QUESTION 76

Refer to the exhibit.

```
UCS-1-A# connect nxos
UCS-1-A(nx-os)# show flogi database
^
% Invalid command at '^' marker.
UCS-1-A(nx-os)#
```

An administrator directly connects a Fibre Channel storage array to ports 1 through 4 on a Cisco UCS 6454 Fabric Interconnect. The administrator configures a service profile to boot directly from the new Fibre Channel storage array, but the service profile fails to boot. When the administrator checks the output of the show flogi database command on the fabric interconnect, it shows the output presented in the exhibit. Which action resolves the issue?

- A. Configure the Zoning Type in vHBA Initiator Group as Multiple Initiator Single Target.
- B. Configure the fabric interconnects in Fibre Channel switch mode.
- C. Configure the Zoning Type in vHBA Initiator Group as Multiple Initiator Multiple Target.
- D. Configure the fabric interconnects in Fibre Channel end-host mode

**Correct Answer: B**

**Section:**

#### QUESTION 77

Refer to the exhibit.

```

N5K1(config-if)# show system internal dcbx info interface ethernet 1/1
Interface info for if_index: 0x1a000000(Eth1/1)
tx_enabled: FALSE
rx_enabled: FALSE
dcbx_enabled: TRUE
DCX Protocol: CIN
Port MAC address: 00:0d:ec:c9:c8:08
DCX Control FSM Variables: seq_no: 0x1, ack_no: 0x0,my_ack_no: 0x0,
peer_seq_no:
 0x0 oper_version: 0x0, max_version: 0x0 fast_retries 0x0
Lock Status: UNLOCKED
PORT STATE: UP
LLDP Neighbors
No DCX tlvs from the remote peer

```

A network engineer notices packet drops on FCoE traffic from the servers. Which action resolves the issue?

- A. Apply flowcontrol receive on the interface.
- B. Apply flowcontrol transmit on the interface.
- C. Enable priority flow control on the interface.
- D. Disable priority flow control on the interface.

**Correct Answer: C**

**Section:**

**QUESTION 78**

DRAG DROP

An engineer troubleshoots issues in Cisco UCS Director. Drag and drop the possible causes of the issues from the left onto the corresponding issues on the right.

**Select and Place:**

Network connectivity is lost between the Cisco UCS Director Bare Metal Agent and the Windows server.	The master inventory database fails.
Power fails on the server that runs Cisco UCS Director.	The VMRC HTML5 console fails to launch.
The Cisco UCS Director appliance and the Cisco UCS Director Bare Metal Agent have a discrepancy in the system time.	The PXE boot tasks fail after a successful deployment of a server running Windows Server.
The VM has VNC enabled.	A Cisco UCS Director appliance fails to display new images added to the Cisco UCS Director Bare Metal Agent.

**Correct Answer:**

	Power fails on the server that runs Cisco UCS Director.
	The VM has VNC enabled.
	Network connectivity is lost between the Cisco UCS Director Bare Metal Agent and the Windows server.
	The Cisco UCS Director appliance and the Cisco UCS Director Bare Metal Agent have a discrepancy in the system time.

Section:

Explanation:

**QUESTION 79**

DRAG DROP

Drag and drop the Cisco UCS SNMP fault types from the left onto the correct issues on the right.

Select and Place:

connectivity	A server discovery fails.
environment	An adapter is unreachable.
operational	A voltage issue is detected.
server	A service profile is unable to associate.

Correct Answer:

	operational
	connectivity
	environment
	server

Section:

Explanation:

**QUESTION 80**

DRAG DROP

Drag and drop the actions from the left onto the faults that they resolve on the right. Not all actions are used.

Select and Place:

Add a block of WWNs.	fitComputePoolEmpty
Add a block of suffixes.	fitFcpoolInitiatorsEmpty
Reacknowledge the server.	fitIppoolPoolEmpty
Add a block of Layer 2 addresses.	fitMacpoolPoolEmpty
Add a block of Layer 3 addresses.	fitUuidpoolPoolEmpty
Add a block of ext-mgmt addresses.	

Correct Answer:

	Reacknowledge the server.
	Add a block of WWNs.
	Add a block of Layer 3 addresses.
	Add a block of Layer 2 addresses.
	Add a block of suffixes.
Add a block of ext-mgmt addresses.	

Section:

Explanation:

**QUESTION 81**

DRAG DROP

Drag and drop the commands from the left onto the correct categories on the right.

Select and Place:

```
switch# run bash
bash-4.2$ vsh -c "configure terminal ; interface eth1/2;
shutdown; sleep 2; show interface eth1/2 brief"
```

```
switch# run bash
bash-4.2$ vsh -c "configure terminal interface eth1/2 shutdown
sleep 2 show interface eth1/2 brief"
```

```
switch# run bash sudo su
bash-4.2$ vsh -c "configure terminal ; interface eth1/2;
shutdown; sleep 2; show interface eth1/2 brief"
```

```
switch# run bash sudo su
bash-4.2$ vsh -c "configure terminal ; interface eth1/2,
shutdown, sleep 2, show interface eth1/2 brief"
```

Will Run Successfully

Will Cause an Error

Correct Answer:

Will Run Successfully

```
switch# run bash
bash-4.2$ vsh -c "configure terminal ; interface eth1/2;
shutdown; sleep 2; show interface eth1/2 brief"
```

```
switch# run bash sudo su
bash-4.2$ vsh -c "configure terminal ; interface eth1/2;
shutdown; sleep 2; show interface eth1/2 brief"
```

Will Cause an Error

```
switch# run bash
bash-4.2$ vsh -c "configure terminal interface eth1/2 shutdown
sleep 2 show interface eth1/2 brief"
```

```
switch# run bash sudo su
bash-4.2$ vsh -c "configure terminal ; interface eth1/2,
shutdown, sleep 2, show interface eth1/2 brief"
```

Section:

Explanation:

**QUESTION 82**

DRAG DROP

A firmware upgrade on a fabric interconnect fails. A bootflash contains a valid image. Drag and drop the recovery steps from the left into the order in which they are implemented on the right.

Select and Place:

Boot the kernel firmware version by using the bootflash.	1
Ensure that the management image is linked correctly.	2
Load the system image.	3
Reboot the switch and press Ctrl+L to display the loader prompt as the switch boots.	4
Run the dir command.	5

Correct Answer:

	Reboot the switch and press Ctrl+L to display the loader prompt as the switch boots.
	Run the dir command.
	Boot the kernel firmware version by using the bootflash.
	Ensure that the management image is linked correctly.
	Load the system image.

Section:

Explanation:

**QUESTION 83**

DRAG DROP

A Cisco Nexus 9000 Series Switch crashes and fails to boot. An engineer must recover the switch and investigate the issue. The switch uses 172.20.50.213/24 IP address for management and its default gateway is 172.20.50.254. Drag and drop the steps for recovering the Cisco Nexus 9000 Series Switch from the left onto the right. Not all steps are used.

Select and Place:

switch boot)# init system	step 1
loader> set ip 171.20.50.213 255.255.255.0	step 2
loader> boot tftp://172.22.255.16/n9000-dk9.6.1.2.11.1.bin	step 3
loader> cmdline recoverymode=1	step 4
switch boot)# load-pxios	step 5
loader> set gw 172.20.50.254	step 6
loader> ip address 171.20.50.213/24	

Correct Answer:

	loader> set ip 171.20.50.213 255.255.255.0
	loader> set gw 172.20.50.254
	loader> cmdline recoverymode=1
	loader> boot tftp://172.22.255.16/n9000-dk9.6.1.2.11.1.bin
	switch boot)# init system
	switch boot)# load-pxios
loader> ip address 171.20.50.213/24	

Section:

Explanation:

**QUESTION 84**

DRAG DROP

Drag each item listed on the left to its proper category on the right. Not all items will fit the categories.

Select and Place:

RIP	Layer 3 Routed Protocols	Layer 3 Routing Protocols
IGRP		
NetBEUI		
BGP		
AppleTalk		
DECnet		
IP		

Correct Answer:





Section:

Explanation:

**QUESTION 85**

Refer to the exhibit.

```
<fvTenant name="Tenant_VOD" >
  <fvAp name="VOD">
    <fvAEPg name="IntraEPGDeny" pcEnfPre
      <fvEsBd tnPvEDName="bd_VOD" />
      <fvRsDonatt tDn="uni/phyDem_V
      <fvRsPathAtt
tDn="topology/ped-1/paths-1022/pathep-
      encap="vlan-10" primaryEncap-
instrImedcy="immediate">
      </fvAEPg>
    </fvAp>
  </fvTenant>
```

Refer to the exhibit. customer reports that all Intra-EPG isolation stopped working within a baremetal tenant. Postman is running on a machine to get information from the APIC in case of orchestration failure. Which action resolves the issue?.

- A. Remove primaryEncap="vlan-110" from the specific port path.
- B. Match encap="vlan-10" and primaryEncap="vlan-110"
- C. Modify the GET command to reference the valid path for the managed object
- D. Change pcEnfPref="unenforced" to pcEnfPref="enforced".

**Correct Answer: A**

Section:

**QUESTION 86**

Refer to the exhibit.

```
Nexus5k#show system internal vpcm info global | i Sticky|Reload
Sticky Master: TRUE
Reload timer started: FALSE
Reload restore configured: TRUE, timer :240
Nexus5k#
```

Refer to the exhibit. During a maintenance window of the Nexus switch pair, one of the Cisco Nexus chassis was brought offline for maintenance. The primary Cisco Nexus switch was stable during the maintenance window. After finishing the tasks on the chassis, the administrator wanted to bring the second switch online. The administrator checked the status of the disconnected switch that was removed from the vPC during the maintenance. The engineer must connect the peer chassis seamlessly with the primary vPC peer without experiencing traffic interruption. Which action accomplishes this goal?

- A. Change the role priority, then connect the peer switch.
- B. Change the auto recovery to disabled, and enable auto recovery.
- C. Change the auto recovery timer to active if not already set, then re-establish the connectivity.
- D. Change the auto timer to a higher value, then connect the peer switch.

**Correct Answer: D**

**Section:**

#### **QUESTION 87**

Refer to the exhibit.

```

18 SNMP packets input
 0 Bad SNMP versions
18 Unknown community name
 0 Illegal operation for community name supplied
 0 Encoding errors
 0 Number of requested variables
 0 Number of altered variables
 0 Get-request PDUs
 0 Get-next PDUs
 0 Set-request PDUs
 0 No such name PDU
 0 Bad value PDU
 0 Read Only PDU
 0 General errors
 0 Get Responses
 0 Unknown Context name
0 SNMP packets output
 0 Trap PDU
 0 Too big errors (Maximum packet size 1500)
 0 No such name errors
 0 Bad values errors
 0 General errors
 0 Get Requests
 0 Get Next Requests
 0 Set Requests
 0 Get Responses

```

Community	Group / Access	context	acl_filter
public	network-operator		

---

SNMP USERS

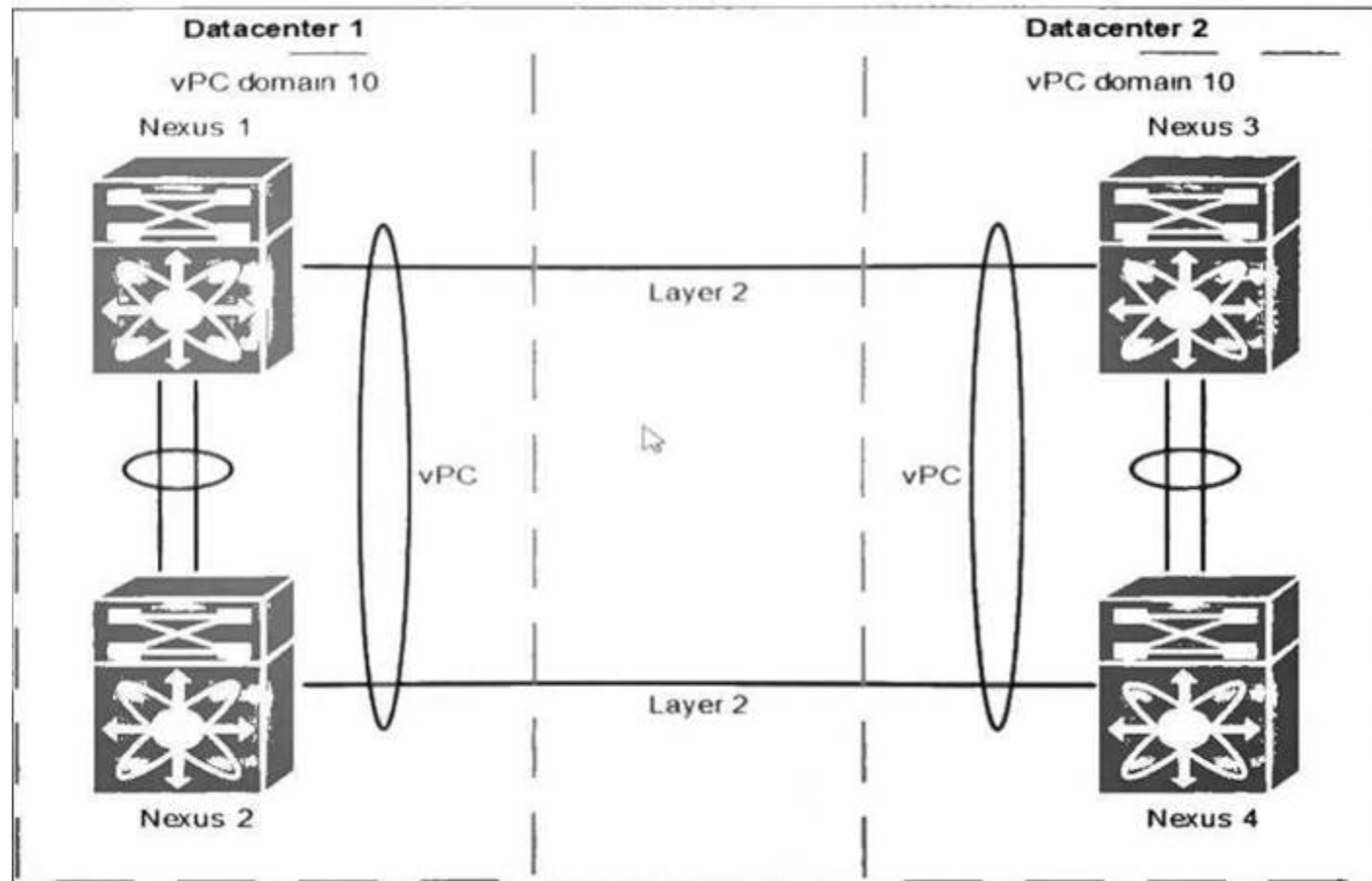
User	Auth	Priv(enforce)	Groups	acl_filter
admin	md5	des (no)	network-admin	

Refer to the exhibit. The monitoring team reports an inability to access the devices after a new centralized management integration. Which action resolves the issue?

- A. Modify the SNMP ACL to allow the incoming request packets.
- B. Enable SHA authentication for the admin user.
- C. Update the community string.
- D. Change the admin user permissions to write.

**Correct Answer: C**  
**Section:**

**QUESTION 88**  
Refer to the exhibit.



Refer to the exhibit. The administrator set up two pairs of Cisco Nexus switches. The administrator set different vPC priorities on all four Nexus switches. As soon as the administrator activates the vPC between the two pairs the network faces different issues. The problems range from both Nexus pairs declaring themselves as root bridge, as well as spanning-tree inconsistencies and traffic forwarding issues. Which action resolves these issues?

- A. Change the role priority on one pair.
- B. Configure peer-config-check-bypass on both pairs.
- C. Configure a vPC peer link between both peers.
- D. Change domain ID on one pair to a different ID.

**Correct Answer: D**

**Section:**

**QUESTION 89**

Refer to the exhibit.

```

vrf context BLUE
  address-family ipv4 unicast
  route-target export 65000:65000
vrf context RED
  address-family ipv4 unicast
  route-target import 65000:65000
!
interface Vlan1000
  no shutdown
  vrf member RED
  no ip redirects
  ip address 10.10.1.254/24
!
ip prefix-list RED_TO_BLUE_PL seq 5 permit 10.10.1.254/24
!
route-map RED_TO_BLUE_RM permit 10
  match ip address RED_TO_BLUE_PL
  set community 65500:65000
!
router bgp 65000
  log-neighbor-changes
  address-family ipv4 unicast
  vrf RED
    router-id 10.255.255.255
    address-family ipv4 unicast
      redistribute direct route-map RED_TO_BLUE_RM
!

```

Refer to the exhibit. The expected routes are not being leaked as expected from VRF RED to VRF BLUE. Which action resolves the issue?

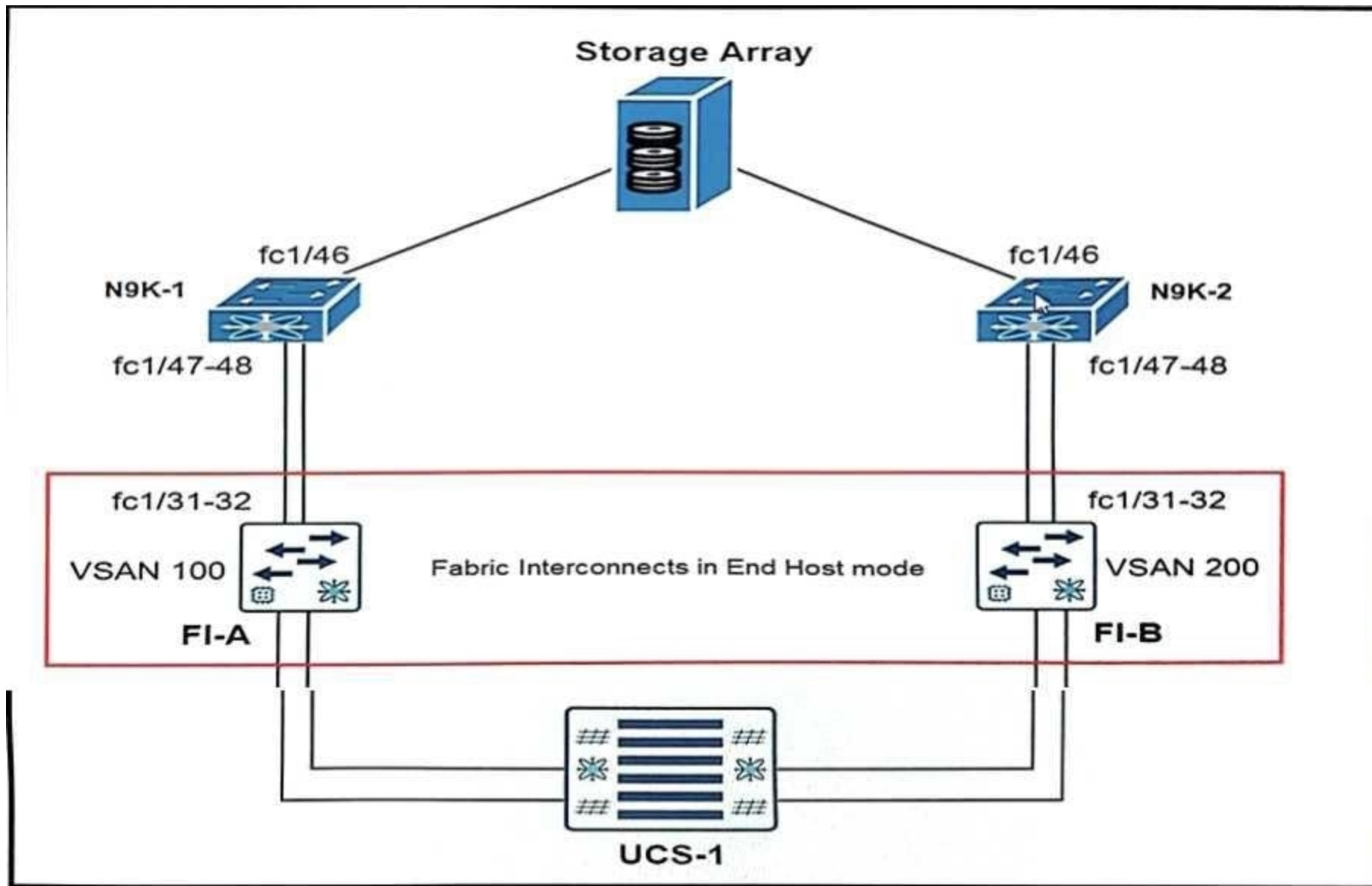
- A. Include the "le 32" knob under the RED\_TO\_BLUE\_ACL prefix list.
- B. Change the route targets under the VRFs.
- C. Configure VRF BLUE under the BGP configuration.
- D. Set the community to 65000:65000 under the route map.

**Correct Answer: D**

**Section:**

**QUESTION 90**

Refer to the exhibit.



```

N9K-1#
!
feature fcoe
slot 1
  port 44-48 type fc
!
vsan database
  vsan 100
  vsan 100 interface fc1/46-48
!
interface fc1/46-48
  no shutdown
!

```

```
N9K-1# show flogi database interface fcl/47-48
```

```
-----  
INTERFACE VSAN          FCID          PORT NAME          NODE NAME  
-----
```

Refer to the exhibit. UCS- 1 fails to connect to the storage array. Which action resolves the issue?

- A. Set the FI-A mode to FC End Host mode.
- B. Enable N9K-1 mode to N-Port ID Virtualization.
- C. Configure N-Port ID Virtualization on FI-A.
- D. Implement N-Port Mirtualization on N9K-1.

**Correct Answer: B**

**Section:**

#### QUESTION 91

A Cisco uCs C-Series Server powers off due to a power outage. The server should turn on when the power is restored with a fixed delay of 3 minutes. However, it remained powered off for more than 3 minutes after the engineer powered it back online. Which two actions resolve the issue (Choose two.)

- A. Configure the power-restore-policy.
- B. Configure the power restore last-state policy.
- C. Set the delay value to 180.
- D. Set the delay fixed value to 3.
- E. Configure power sync policy.

**Correct Answer: A, C**

**Section:**

#### QUESTION 92

Refer to the exhibit.

```
logging console 5  
!  
event manager applet LOG_BGP_CHANGES  
  event syslog pattern ".*%BGP-5-ADJCHANGE:.*"  
  action 1.0 syslog msg BGP PEER HAS FLAPPED
```

Refer to the exhibit The EEM applet must generate a syslog message when a BGP adjacency flaps. This message must be displayed to the console of the switch. However, when a BGP adjacency failure is simulated, no syslog message is displayed. Which action resolves the issue?

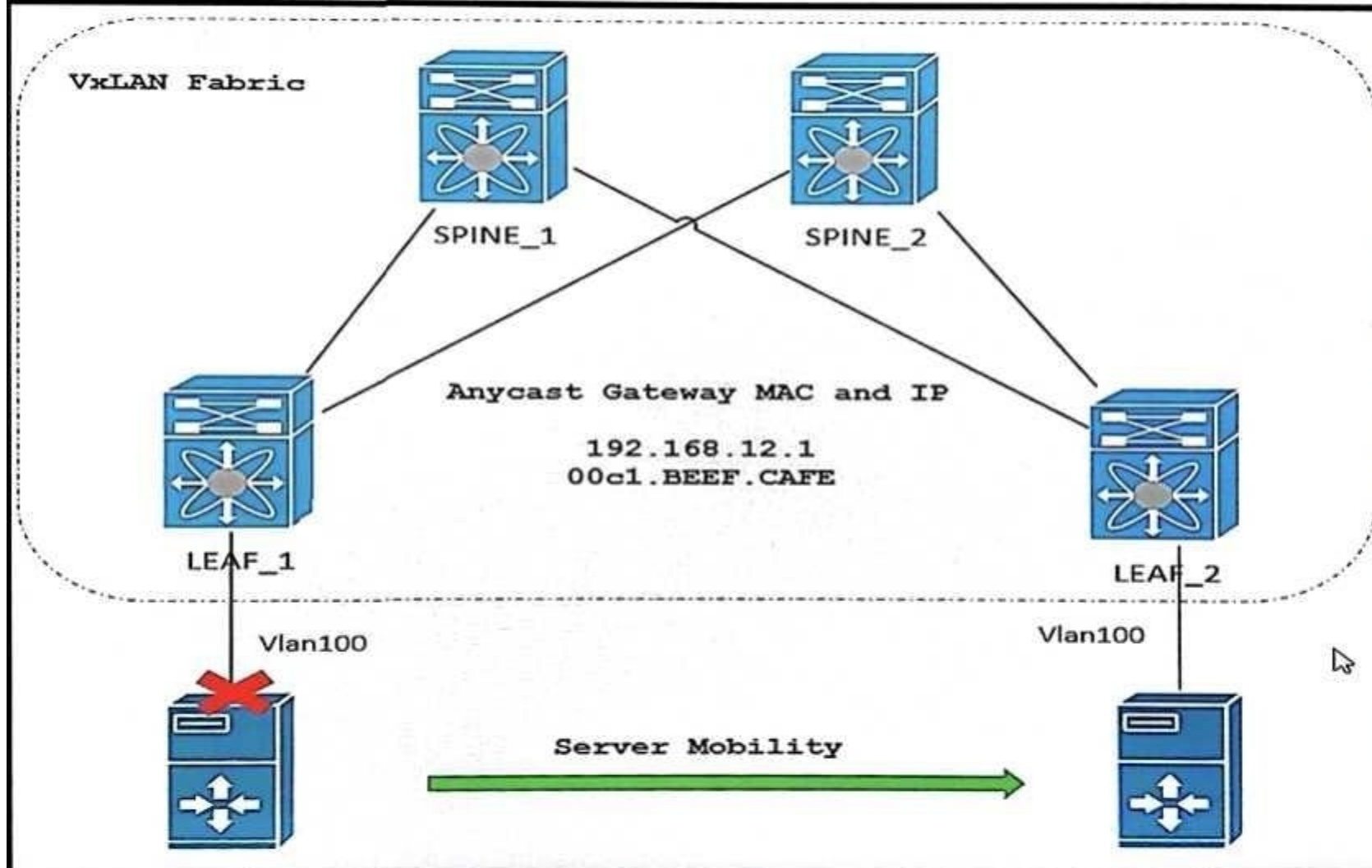
- A. Add the event-default action statement.
- B. Modify the policy to use the snmp trap action.
- C. Adjust the policy to match an SNMP OID.
- D. Set the logging priority to Warnings.

**Correct Answer:**

**Section:**

QUESTION 93

Refer to the exhibit



```
!LEAF_2 CONFIG
vrf context WEB_SERVER
 vni 33333
 rd auto
 address-family ipv4 unicast
  route-target both auto
  route-target both auto evpn
!
fabric forwarding anycast-gateway-mac 00C1.BEFE.CAFE
!
interface Vlan100
 no shutdown
 vrf context WEB_SERVER
 ip address 192.168.12.1/24
!
interface Vlan30
 no shutdown
 vrf member WEB_SERVER
 ip forward
```

Refer to the exhibit. To avoid service disruption, an engineer must move the server from LEAF\_1 to LEAF\_2. After running the test, the engineer noticed that LEAF\_2 failed to forward network traffic into the VxLAN fabric. The BGP, interface NVE, and VNI were confirmed to be configured as expected. Which two actions must be taken on LEAF\_2 to resolve the issue? (Choose two.)



- A. Change the fabric forwarding anycast-gateway-mac MAC address.
- B. Add fabric forwarding mode anycast-gateway on interface Vlan100.
- C. Configure correspondent IP addressing on every interface.
- D. Remove ip forward from interface Vlan30 and add it on interface Vlan100.
- E. Enable HMM tracking to advertise host routes into the VXL AN fabric.

**Correct Answer: A, E**

**Section:**