

Cisco.300-820.by.David.67q

Number: 300-820
Passing Score: 800
Time Limit: 120
File Version: 21.0

Exam Code: 300-820

Exam Name: Implementing Cisco Collaboration Cloud and Edge Solutions



Exam A

QUESTION 1

When an Expressway-E is configured for static NAT, which Session Description Protocol attribute is modified to reflect the NAT address?

- A. SDP b-line
- B. SIP record route
- C. SDP c-line
- D. SDP m-line

Correct Answer: C

Section:

QUESTION 2

A company is installing Cisco Collaboration infrastructure and one of the requirements is that they must be able to communicate with many external parties that are using H.323 and SIP. Internally they want to register the endpoints only on SIP.

Which functionality would describe the feature that needs to be enabled and where to achieve this?

- A. Interworking in Expressway-C
- B. Transcoding in Cisco Unified Communications Manager
- C. Transcoding in Expressway-C
- D. Interworking in Cisco Unified Communications Manager

Correct Answer: B

Section:

QUESTION 3

What is a key configuration requirement for Hybrid Message Service High Availability deployment with multiple IM and Presence clusters?

- A. You must have the Intercluster Sync Agent working across your IM and Presence clusters.
- B. You must have the Intercluster Lookup Service working across all of your IM and Presence clusters.
- C. Your IM and Presence Service clusters must have Multiple Device Messaging disabled.
- D. AXL service should be activated only on the publisher of each IM and Presence cluster.

Correct Answer: A

Section:

QUESTION 4

Cisco Collaboration endpoints are exchanging encrypted signaling messages.

What is one major complication in implementing NAT ALG for voice and video devices?

- A. Internal endpoints cannot use addresses from the private address space.
- B. The NAT ALG cannot inspect the contents of encrypted signaling messages.
- C. NAT ALG introduces jitter in the voice path.



D. Source addresses cannot provide the destination addresses that remote endpoints should use for return packets.

Correct Answer: B

Section:

QUESTION 5

What are two reasons why port 8443 is unreachable from the Internet to the Expressway-E? (Choose two.)

- A. The MRA license is missing on the Expressway-E.
- B. The Unified Communications zone is down.
- C. Transform is not configured on Expressway-E.
- D. The SRV record for _cisco-uds is misconfigured.
- E. The firewall is blocking the port.

Correct Answer: D, E

Section:

QUESTION 6

Which media encryption mode can be configured on an Expressway zone?

- A. Advanced Encryption Standard
- B. IPsec
- C. Triple Data Encryption Standard
- D. force unencrypted

Correct Answer: A

Section:

QUESTION 7

What is the purpose of a transform in the Expressway server?

- A. A transform has the function as a neighbor zone in the Expressway. It creates a connection with another server.
- B. A transform changes the audio codec when the call goes through the Expressway.
- C. A transform is used to route calls to a destination.
- D. A transform changes an alias that matches certain criteria into another alias.

Correct Answer: D

Section:

QUESTION 8

An organization with a domain name of example.com.

Which two SRV records are valid for a SIP and H.323 communication? (Choose two.)

- A. _sips._tcp.example.com
- B. _sips._udp.example.com
- C. _h323ls._udp.example.com
- D. _h323ls._tcp.example.com



E. _collab-edge._tls.example.com

Correct Answer: A, C

Section:

QUESTION 9

What is the Cisco-recommended key length in bits for a Cisco Expressway certificate?

- A. 1024
- B. 2048
- C. 4096
- D. 8192

Correct Answer: C

Section:

QUESTION 10

`(\d{3}) (\d{3}) (\d{3}) (\d{3})`

Refer to the exhibit. Which two numbers match the regular expression? (Choose two.)

- A. d20d16d20d22
- B. 2091652010224
- C. 209165200225
- D. d209d165d200d224
- E. 209165200224

Correct Answer: C, E

Section:

QUESTION 11

A company has enabled ICE to optimize call flows and improve video quality between their Cisco Collaboration endpoints internally and externally. For which reason would you see activity on the TURN server when a call is established between two external endpoints?

- A. The video call is using encryption, which is not supported by ICE with CUCM 12.5
- B. ICE cannot reduce the packet loss on the link
- C. A STUN cannot punch holes in the firewall
- D. The video call is using 4K resolution, which is not supported by ICE with CUCM 12.5

Correct Answer: A

Section:

QUESTION 12

Which role does Call Policy play when preventing toll fraud on Expressways?

- A. It controls which calls are allowed, which calls are rejected, and which calls are redirected to a different destination.
- B. It changes the calling and called number on a call.



- C. It changes the audio protocol used by a call through Expressways.
- D. It changes the audio codec used in a call through Expressways.

Correct Answer: A

Section:

QUESTION 13

What happens to the encrypted signaling traffic of a collaboration device if you place it inside a firewall with private IP addresses and try to make a call over IP without any collaboration infrastructure?

- A. The signaling makes it back to the endpoint because the firewall is an application layer gateway and provides address translation.
- B. Encrypted IP traffic for collaboration devices always is trusted by the firewall.
- C. The signaling does not make it back to the endpoint because the firewall cannot inspect encrypted traffic.
- D. The signaling makes it back to the endpoint because the endpoint sent the private address to the external endpoint.

Correct Answer: B

Section:

QUESTION 14

Which statement about scheduling Expressway backups is true?

- A. It is not supported on the application.
- B. It is allowed from the application CLI of the Expressway only.
- C. It is allowed from the application CLI and GUI of the Expressway.
- D. It is allowed from the application GUI of the Expressway only.



Correct Answer: C

Section:

QUESTION 15

Between which two DTMF relay methods does the Expressway support interworking? (Choose two.)

- A. unsolicited notify
- B. RFC 2833
- C. KPML
- D. passthrough
- E. H.245 user input indication

Correct Answer: B, E

Section:

Explanation:

Reference: https://www.cisco.com/c/dam/en/us/td/docs/voice_ip_comm/expressway/admin_guide/Cisco-Expressway-Administrator-Guide-X12-6.pdf

QUESTION 16

What allows endpoints behind a NAT to discover the paths through which they will pass media?

- A. RTP
- B. TLS

- C. SNMP
- D. ICE

Correct Answer: D

Section:

Explanation:

Reference: <https://www.cisco.com/c/en/us/td/docs/solutions/PA/ICE/icepa125.html>

QUESTION 17

Which two types of information does Cisco Expressway back up? (Choose two.)

- A. call records
- B. log files
- C. IP addresses
- D. current call states
- E. security certificates

Correct Answer: D, E

Section:

Explanation:

Reference: https://www.cisco.com/c/dam/en/us/td/docs/voice_ip_comm/expressway/config_guide/X8-10/Mobile-Remote-Access-via-Expressway-Deployment-Guide-X8-10.pdf

QUESTION 18

Which connection does the traversal zone configuration define?

- A. Expressway-E and Collaboration Endpoints
- B. Cisco UCS E-Series and Cisco UCM
- C. Cisco UC and Cisco Unified Presence Server
- D. Cisco Expressway-C and Cisco Expressway-E platforms

Correct Answer: D

Section:

Explanation:

Reference: https://www.cisco.com/c/dam/en/us/td/docs/voice_ip_comm/expressway/config_guide/X8-11/Cisco-Expressway-Basic-Configuration-Deployment-Guide-X8-11-4.pdf

QUESTION 19

Which step is taken when configuring a Cisco Expressway solution?

- A. Configure the Expressway-E by using a non-traversal server zone.
- B. Enable static NAT on the Expressway-E only.
- C. Disable H.323 mode on the Expressway-E.
- D. Enable H.323 H.460.19 demultiplexing mode on the Expressway-C.

Correct Answer: B

Section:

QUESTION 20



Configuration

Rule name	CCNP-Collab
Description	CCNP-Collab
Priority	1
Protocol	SIP
Source	Local Zone
Request must be authenticated	No
Mode	Alias pattern match
Pattern type	Regex
Pattern string	1?3+5
Pattern behavior	Replace
Replace string	135
On successful match	Stop
Target	Traversal Zone
State	Enabled

 **vdumps**

Refer to the exhibit. When configuring a search rule that routes calls to a zone, what occurs when 13358 is dialed?

- A. 13358 is replaced by 135, and then is sent to the local zone.
- B. 13358 is replaced by 135 and remains in the same zone.
- C. 13358 is replaced by 135, and then is sent to the traversal zone.
- D. 13358 is sent directly to the traversal zone.

Correct Answer: C

Section:

QUESTION 21

Create transform You are here: [Configuration](#) > [Dial plan](#) > [Transform](#) > [Create transform](#)

Configuration

Priority: 5

Description: Convert Untitled CM supplied domain information to the Expressway SIP domain

Pattern type: Regex

Pattern string: (4\d{3})@exp-name.exp.domain *

Pattern behavior: Replace

Replace string: \1@exp.domain

State: Enabled

Create transform Cancel

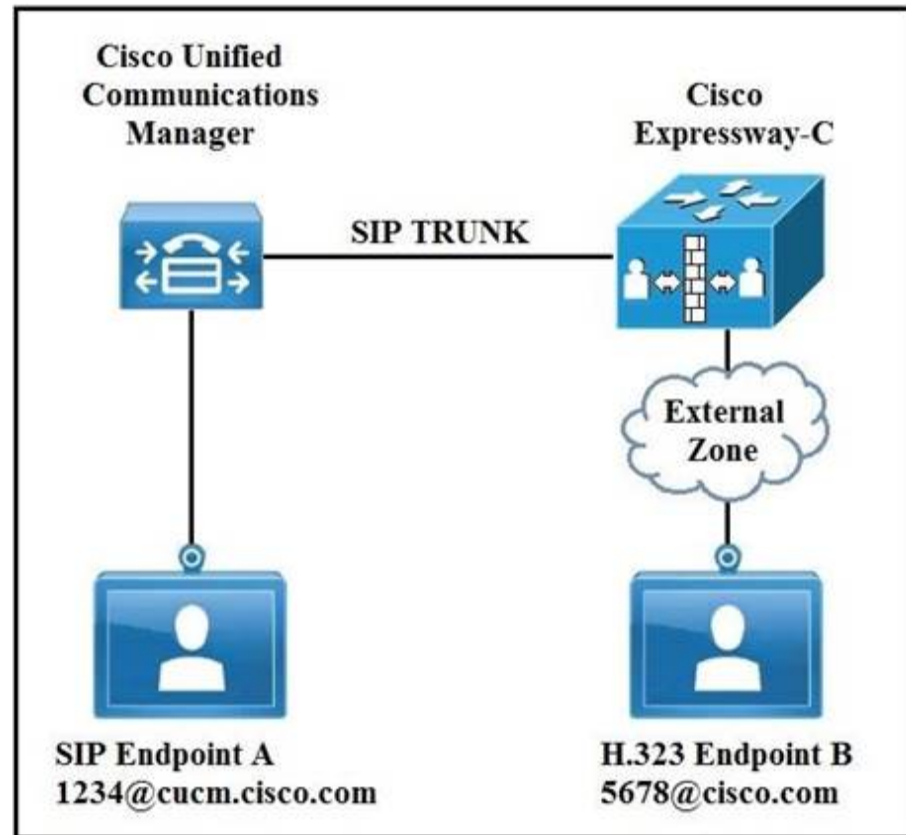
Refer to the exhibit. Which description of the transformation is true?

- A. It converts 4123@exp-name.exp.domain:<port> to 4123@exp.domain
- B. It changes all patterns that begin with 4123@exp-name.exp.domain:<port> to 1@exp.domain
- C. It changes 413@exp-name.exp.domain:<port> to 413@exp.domain
- D. It converts 4.3@exp-name.exp.domain:<port> to 1@exp.domain

Correct Answer: A

Section:

QUESTION 22



Refer to the exhibit. In an environment SIP devices are registered to CUCM and H.323 devices to VCS.
What would be required to enable these calls to setup correctly?

- A. Create a presearch transform.
- B. Change the domain of SIP endpoint A to cisco.com.
- C. Disable SIP in the external zone.
- D. Change the interworking mode to On.

Correct Answer: D

Section:

QUESTION 23

Which step is required when configuring cloud and hybrid deployments for Cisco Jabber?

- A. Add the Jabber user to Cisco Unity Connection.
- B. Add the Jabber user to Expressway-E.
- C. Add the Jabber user to Expressway-C.
- D. Add Jabber Users to the Cisco Webex Administration Tool.

Correct Answer: D

Section:

QUESTION 24

Which two licenses are required for the B2B feature to work? (Choose two.)

- A. Traversal Server
- B. TURN Relays



- C. Rich Media Sessions
- D. Advanced Networking
- E. Device Provisioning

Correct Answer: C, E

Section:

QUESTION 25



An Expressway-E is configured using a single NIC with NAT.



How must the Expressway-C traversal client zone be configured to connect to the Expressway-E?

- A. TLS verify must be enabled.
- B. The zone profile must be set to default.
- C. The peer address must be the Expressway-E NAT address.
- D. The peer address must be the Expressway-E LAN 1 IP address.

Correct Answer: C

Section:

QUESTION 26

	Expressway-E
Rule name	Enter Block ISDN call for example
Description	Enter Block everything (including nonregistered endpoints)
Priority	Enter 41
Protocol	<i>Any</i>
Source	
Request must be authenticated	<i>No</i>
Mode	<i>Alias pattern match</i>
Pattern type	<i>Regex</i>
Pattern string	Enter (9\d+) (.*) (@example.com)
Pattern behavior	<i>Replace</i>
Replace string	Enter do-not-route-this-call for example
On successful match	<i>Stop</i>
Target	<i>TraversalZone</i>
State	<i>Enabled</i>

Refer to the exhibit. An ISDN gateway is registered to Expressway-C with a prefix of 9 and/or it has a neighbor zone specified that routes calls starting with a 9. Which value should be entered into the "Source" field to prevent toll fraud regardless at origin of the call?

- A. Traversal Zone
- B. Any
- C. Neighbor Zone
- D. All

Correct Answer: D

Section:

QUESTION 27

```

Expressway-C Traversal Zone:
SIP: Failed to connect to 192.168.1.6:7001

Expressway-C Event Log shows the following:

2019-10-23T11:01:51.925-04:00 : Event="Outbound TLS Negotiation Error" Service="SIP" Src-ip="192.168.1.5" Src-port="27204"
Dst-ip="192.168.1.6" Dst-port="7003" Detail="tlsv1 alert unknown ca"
Protocol="TLS" Common-name="amer-expressway01.example.com" Level="1" UTCTime="2019-10-23 15:01:51,923"

Expressway-C server certificate shows the following decoded output:

Certificate:
Data:
  Version: 3 (0x2)
  Serial Number: 1 (0x1)
  Signature Algorithm: sha256WithRSAEncryption
  Issuer: O=Temporary CA fce4028e-92ba-4cbc-9e71-08b959888af4, OU=Temporary CA fce4028e-92ba-4cbc-9e71-08b959888af4,
  CN=Temporary CA fce4028e-92ba-4cbc-9e71-08b959888af4

```

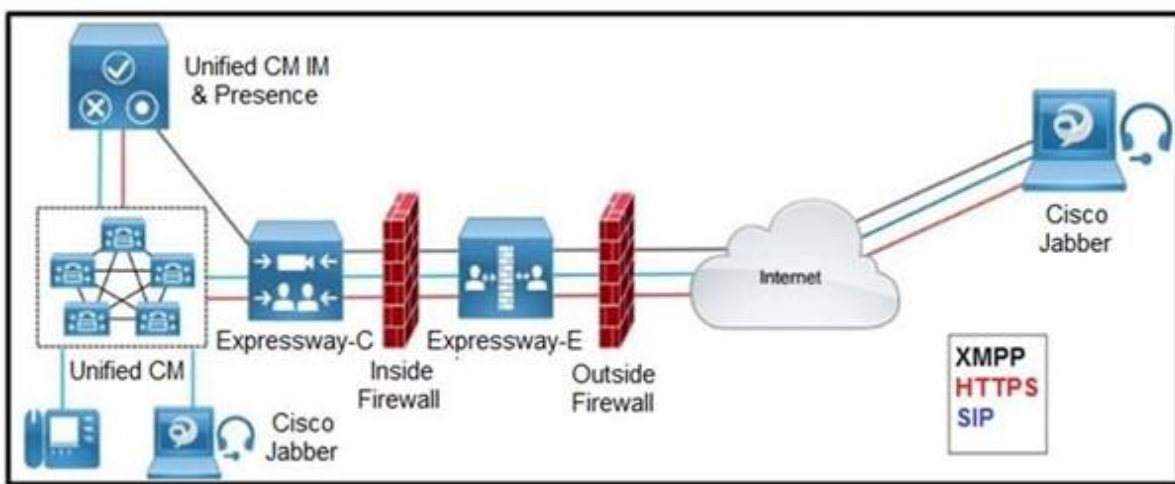
Refer to the exhibit. An Expressway-C and Expressway-E are configured for B2B calling and the Expressway-E zone is set to TLS Verify Currently, calls do not reach the Expressway-C. The Traversal Client zone on the Expressway-C for B2B reports the information in the exhibit for the Peer 1 address. Which action resolves this error?

- A. Configure the Expressway-C Traversal Client zone Peer 1 address with the fully qualified domain name of the Expressway-E.
- B. Configure the Expressway-C Traversal Client zone transport protocol with TCP.
- C. Add a server certificate to the Expressway-C that is signed by a certificate authority.
- D. Add an intermediate certificate to the Expressway-C that is signed by a certificate authority.



Correct Answer: D
Section:

QUESTION 28



Refer to the exhibit. Which inbound connection should an administrator configure on the outside firewall?

- A. Media: UDP 36000 to 36011
- B. XMPP: TCP 5222
- C. SIP: TCP 5061

D. HTTPS (tunneled over SSH between C and E): TCP 2222

Correct Answer: C

Section:

Explanation:

Reference: https://www.cisco.com/c/dam/en/us/td/docs/voice_ip_comm/expressway/config_guide/X12-5/Cisco-Expressway-IP-Port-Usage-for-Firewall-Traversal-Deployment-Guide-X12-5.pdf

QUESTION 29

How does an administrator configure an Expressway to make sure an external caller cannot reach a specific internal address?

- A. block the call with a call policy rule in the Expressway-E
- B. add the specific URI in the firewall section of the Expressway and block it
- C. configure FAC for the destination alias on the Expressway
- D. add a search rule route all calls to the Cisco UCM

Correct Answer: C

Section:

Explanation:

Reference:

<https://www.google.com/url?sa=t&rct=j&q=&esrc=s&source=web&cd=&ved=2ahUKEwiW2dKTxpfvAhX87nMBHQw5CBoQFjABegQIAxAD&url=https%3A%2F%2Fcommunity.cisco.com%2Fkxiwq67737%2Fattachment%2Fkxiwq67737%2F4576-docs-colaboracao-voz-e-video%2F141%2F2%2F1pcor-fac.pdf&usg=AOvVaw32Q70oP4UYkubwfFJlmaq9>

QUESTION 30

An engineer wants to configure a zone on the Expressway-E to receive communications from the Expressway-C in order to allow inbound and outbound calls. How is the peer address configured on the Expressway-C when Expressway-E has only one NIC enabled and is using static NAT mode?

- A. Expressway-E DHCP
- B. Cisco UCM FQDN
- C. Cisco UCM DHCP
- D. Expressway-E FQDN

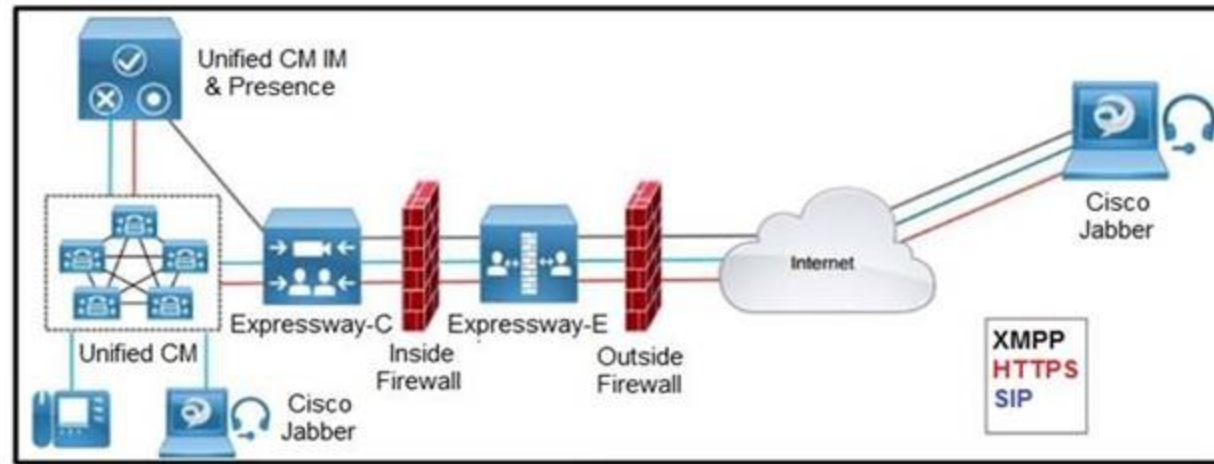
Correct Answer: D

Section:

Explanation:

Reference: https://www.cisco.com/c/dam/en/us/td/docs/voice_ip_comm/expressway/config_guide/X8-11/Cisco-Expressway-Basic-Configuration-Deployment-Guide-X8-11-4.pdf

QUESTION 31



Refer to the exhibit. Which two outbound connections should an administrator configure on the internal firewall? (Choose two.)

- A. XMPP: TCP 7400
- B. SIP: TCP 7001
- C. SIP TCP 5061
- D. Media: UDP 36012 to 59999
- E. HTTPS: TCP 8443

Correct Answer: A, B

Section:

Explanation:

Reference: https://www.cisco.com/c/dam/en/us/td/docs/voice_ip_comm/expressway/config_guide/X12-5/Cisco-Expressway-IP-Port-Usage-for-Firewall-Traversal-Deployment-Guide-X12-5.pdf

QUESTION 32

IP

Configuration

IP protocol: IPv4

Use dual network interfaces: Yes

External LAN interface: LAN 1

IPv4 gateway: 192.168.108.1

LAN 1 - Internal

IPv4 address: 192.168.114.18

IPv4 subnet mask: 255.255.255.0

IPv4 subnet range: 192.168.114.0 - 192.168.114.255

IPv4 static NAT mode: Off

Maximum transmission unit (MTU): 1500

LAN 2 - External

IPv4 address: 192.168.108.2

IPv4 subnet mask: 255.255.255.0

IPv4 subnet range: 192.168.108.0 - 192.168.108.255

IPv4 static NAT mode: Off

Maximum transmission unit (MTU): 1500

Vdumps

Refer to the exhibit. The firewall has been configured from NAT 192.168.108.2 to 100.64.0.1. Which configuration changes are needed for an Expressway-E with dual network interfaces?

- A.
External LAN interface: LAN 2
LAN 1 IPv4 static NAT mode: On
LAN 1 IPv4 static NAT address: 100.64.0.1
LAN 2 IPv4 static NAT mode: On
LAN 2 IPv4 static NAT address: 100.64.0.1
- B.
External LAN interface: LAN 2
LAN 2 IPv4 static NAT mode: On
LAN 2 IPv4 static NAT address: 100.64.0.1
- C.
External LAN interface: LAN 1
LAN 1 IPv4 static NAT mode: On
LAN 1 IPv4 static NAT address: 100.64.0.1
- D.
External LAN interface: LAN 2
LAN 1 IPv4 static NAT mode: On
LAN 1 IPv4 static NAT address: 100.64.0.1

Correct Answer: B

Section:



QUESTION 33

An engineer is deploying an Expressway solution for the SIP domain Cisco.com. Which SRV record should be configured in the public DNS to support inbound B2B calls?

- A. _collab-edge._tls.cisco.com
- B. _cisco-uds._tcp.cisco.com
- C. _sip._tcp.cisco.com
- D. _cuplogin._tcp.cisco.com

Correct Answer: C

Section:

Explanation:

Reference: <https://www.ciscolive.com/c/dam/r/ciscolive/emea/docs/2018/pdf/BRKCOL-2018.pdf>

QUESTION 34

A call is sent by Cisco UCM to Expressway with a URI of 75080001@expc1a.pod8.test.lab. If (7508...)@expc1a.pod8.test.lab.* is the pattern string, what would be the replacement string of the transform in Expressway to re-write the call so that it becomes 75080001@conf.pod8.test.lab?

- A. \1@conf.pod8.test.lab.@
- B. \1@conf.pod8.test.lab.*
- C. \1@conf.pod8.test.lab
- D. \1@conf.pod8.test.lab.!

Correct Answer: C

Section:

QUESTION 35

Transforms

Priority	State	Description	Pattern	Type	Behavior	Replace
<input type="checkbox"/> 1	Enabled	Strip Domain from all calls	(.*)@(.*)	Regex	Replace	%1
<input type="checkbox"/> 2	Enabled	add pod1.local domain to all requests	(.*)	Regex	Replace	%1@pod1.local

Search rules

Priority	Rule name	Protocol	Source	Mode	Pattern type	Pattern string	Pattern behavior	On match	Target	SIP variant	Enabled
1	Route all Calls to Local Zone	Any	Any	Any alias				Continue	LocalZone	Any	<input checked="" type="checkbox"/>

Search history

Search type	Source	Destination	SIP variant	Status
SIP (INVITE)	jabberuser@pod1.local	sip.endpointc@pod1.local	Standards-based	Not found
SIP (INVITE)	jabberuser@pod1.local	sip.endpointb@pod1.local	Standards-based	Not found
SIP (INVITE)	jabberuser@pod1.local	sip.endpointa@pod1.local	Standards-based	Not found



Refer to the exhibit. Calls to locally registered endpoints are failing. At present, there are two endpoints registered locally to this Expressway. An H.323 endpoint with an alias of "EndpointA" is registered, and a SIP endpoint with an alias of "EndpointB@pod1.local" is also registered. How is this issue resolved?

- A. The dialplan must be redesigned to use the transforms to convert the alias into SIP URI format and then use separate search rules for each format that needs to be dialed within the local zone.
- B. The calls are failing because there are insufficient licenses. Additional licenses must be installed for the Expressway to route these calls.
- C. The current search rule does not match the call, so the search rule must be modified to include a SIP Variant of "Standards-Based".
- D. Calling parties are placing calls with the wrong domain. End-users must be instructed not to use the pod1.local domain as that is owned by the local system. Calls to any other domain would work.

Correct Answer: A

Section:

QUESTION 36

```
tvcs: Event="System Configuration Changed" Detail="xConfiguration Bandwidth
Link 17 Pipe2 Name: " Level="1"
httpd[10591]: web: Event="System Configuration Changed" Detail="Create Zones
Zone 7 ZoneName: cms4.pod1.local" Src-ip="10.0.251.192" Src-port="50107"
User="admin" Level="1"
httpd[10591]: web: Event="System Configuration Changed" Detail="Create Zones
Zone 7 Type: Neighbor" Src-ip="10.0.251.192" Src-port="50107" User="admin"
Level="1"
httpd[10591]: web: Event="System Configuration Changed" Detail="Zones Zone 7
H323 Mode - changed from: On to: Off" Src-ip="10.0.251.192" Src-port="50107"
User="admin" Level="1"
httpd[10591]: web: Event="System Configuration Changed" Detail="Zones Zone 7
Neighbor SIP B2BUA Replaces Mode - changed from: Forward to: Terminate"
Src-ip="10.0.251.192" Src-port="50107" User="admin" Level="1"
httpd[10591]: web: Event="System Configuration Changed" Detail="Zones Zone 7
Neighbor Peer Address - changed from: to: cms4.pod1.local"
Src-ip="10.0.251.192" Src-port="50107" User="admin" Level="1"
tvcs: Event="System Configuration Changed" Detail="xConfiguration Zones Zone 7
H323 Mode: Off" Level="1"
tvcs: Event="System Configuration Changed" Detail="xConfiguration Zones Zone 7
Neighbor SIP B2BUA Replaces Mode: Terminate" Level="1"
tvcs: Module="network.dns" Level="DEBUG": Detail="Sending DNS query"
Name="cms4.pod1.local" Type="A and AAAA"
tvcs: Event="System Configuration Changed" Detail="xConfiguration Zones Zone 7
Neighbor Peer 1 Address: cms4.pod1.local" Level="1"
tvcs: Module="network.dns" Level="DEBUG": Detail="Could not resolve hostname"
```

Vdumps

Refer to the exhibit. A new neighbor zone is added for a new Cisco Meeting Server, but the zone is showing a SIP status of failed from the time the zone it was created. What should be done to resolve this issue?

- A. The search rule must be changed to continue on match
- B. The existing zone using ID 7 must be deleted
- C. More bandwidth must be added to the appropriate pipes
- D. The underlying DNS issue must be resolved

Correct Answer: A

Section:

QUESTION 37

Which two considerations must be made when using Expressway media traversal? (Choose two.)

- A. It is possible to NAT both Expressway-E interfaces
- B. The Unified Communications traversal zone should be used for MRA

- C. The Expressway-E must be put in a firewall DMZ segment
- D. Expressway Control is the traversal server installed in the DMZ
- E. Cisco UCM zone should be either traversal server or client

Correct Answer: B, C

Section:

Explanation:

Reference: <https://www.ciscolive.com/c/dam/r/ciscolive/apjc/docs/2018/pdf/BRKUCC-2801.pdf>

QUESTION 38

Jabber cannot log in via Mobile and Remote Access. You inspect Expressway-C logs and see this error message: XCP_JABBERD Detail="Unable to connect to host '%IP%', port 7400:(111) Connection refused"
Which is the cause of this issue?

- A. Rich Media Session licenses are not activated on Expressway-E.
- B. Expressway-E is listening on the wrong IP interface.
- C. The destination port for Expressway-E is set to 7400 instead of 8443 on the Expressway-C.
- D. The XCP Service is not activated on Expressway-E.

Correct Answer: B

Section:

QUESTION 39

Which configuration is required when implementing Mobile and Remote Access on Cisco Expressway?

- A. IPS
- B. SAML authentication
- C. Cisco Unified CM publisher address
- D. SSO

Correct Answer: C

Section:

QUESTION 40

What is the purpose of using ICE for Mobile and Remote Access endpoints in the Cisco Collaboration infrastructure?

- A. ICE controls the bandwidth usage for Cisco Collaboration endpoints if the endpoints are located outside the company network.
- B. ICE enables Cisco Collaboration endpoints to determine if there is direct connectivity between them.
- C. ICE uses FAST updates to optimize the video quality in case of packet loss. This technology is available only from Cisco Unified CM version 11.5 and later.
- D. ICE enablement allows for the Cisco Collaboration endpoint to register through Expressway servers to Cisco Unified Communications Manager behind a firewall.

Correct Answer: B

Section:

QUESTION 41

When deploying an Expressway Core and Expressway Edge cluster for mobile and remote access, which TLS verify subject name must be configured on the Expressway-E UC traversal zone?

- A. Webex CUSP Cluster Name

- B. Expressway-E Cluster Name
- C. Cisco Unified Communications Manager Publisher FQDN
- D. Expressway-C Cluster Name

Correct Answer: B

Section:

QUESTION 42

```
Module="network.ldap" Level="INFO": Detail="Authentication credential found
in directory for identity: expresswayturn"

Module="developer.nomodule" Level="WARN"
CodeLocation="ppcmains/sip/sipproxy/
SipProxyAuthentication.cpp(686)" Method="SipProxyAuthentication::
checkDigestSAResponse" Thread="0x7a2485cb0700": calculated response does not
match supplied response,
calculatedResponse=769c8f488b71eebdf28b61ab1dc9f5e9,
response=319a0bb365dccf98c1bb7b3ce350f6cc

Event="Authentication Failed" Service="SIP" Src-ip="10.1.1.161"
Src-port="25713" Detail="Incorrect authentication credential for user"
Protocol="TLS" Method="OPTIONS" Level="1"
```

Refer to the exhibit. Mobile Cisco Jabber cannot register with on-premises Cisco Unified Communications Manager using Mobile and Remote Access. Some logs were captured on Expressway Edge. Which action corrects this problem?

- A. Ensure that the peer address does not match the Common Name on certificate.
- B. Ensure that the _cisco-uds SRV record has been configured.
- C. Ensure that the credential has been entered correctly.
- D. Ensure that the SIP domains are added on Expressway Core.



Correct Answer: C

Section:

QUESTION 43

Which two statements about Expressway media traversal are true? (Choose two.)

- A. Expressway Control is the traversal server installed in the DMZ.
- B. The Expressway Edge must be put in a firewall DMZ segment.
- C. Cisco Unified Communications Manager zone can be either traversal server or client.
- D. The Unified Communications traversal zone can be used for Mobile and Remote Access.
- E. Both Expressway Edge interfaces can be NATed.

Correct Answer: B, D

Section:

QUESTION 44

Which zone is required between Expressway-E and Expressway-C in Mobile and Remote Access deployments?

- A. Unified Communications traversal zone
- B. neighbor zone
- C. DNS zone
- D. traversal zone

Correct Answer: A

Section:

QUESTION 45

For a Mobile and Remote Access deployment, which server's certificate must include the Unified registration domain as a Subject Alternate Name?

- A. Expressway-C server certificate
- B. Cisco Unified Communications Manager server certificate
- C. Expressway-E server certificate
- D. Expressway-C and Expressway-E server certificate

Correct Answer: C

Section:

QUESTION 46

A Jabber user is being prompted to trust the Expressway-E certificate when using Mobile and Remote Access. The administrator has validated that the Expressway-E certificate is being trusted by the machine running the Jabber client.

What else can be done to solve this problem?

- A. Create a new CSR with new information on the SAN field.
- B. Include Cisco Unified Communications Manager registration domain in the Expressway-E certificate as a SAN.
- C. Change the domain name.
- D. Change the FQDN of the Expressway.



Correct Answer: B

Section:

QUESTION 47

Which DNS record and port combination must be resolved externally for Mobile and Remote Access to be used?

- A. _collab-edge on port 8443
- B. _cisco-uds-edge on port 5061
- C. _collab-edge on port 5061
- D. _cisco-uds on port 8443

Correct Answer: A

Section:

QUESTION 48

Which two statements about Mobile and Remote Access certificate are true? (Choose two.)

- A. Expressway Core can use private CA signed certificate.

- B. You must upload the root certificates in the phone trust store.
- C. Expressway must generate certificate signing request.
- D. Expressway Edge must use public CA signed certificate.
- E. The Jabber client can work with public or private CA signed certificate.

Correct Answer: C, D

Section:

QUESTION 49

In a Mobile and Remote Access deployment, where must communications be encrypted with TLS?

- A. Cisco Expressway-E and endpoints outside the enterprise
- B. Cisco Expressway-C, Cisco Unified Communications Manager, and IM&P
- C. Cisco Expressway-C, Cisco Expressway-E, and Cisco Unified Communications Manager
- D. Cisco Expressway-C, Cisco Expressway-E, and endpoints outside the enterprise

Correct Answer: A

Section:

QUESTION 50

When determining why Mobile and Remote Access to Cisco TelePresence equipment does not work anymore for an organization. There are several administrators and configuration changes could have happened without anyone knowing. Internal communication seems to be working, but no external system can register or call anywhere. Gathering symptoms, you also discover that no internal systems can call out either. What is TraversalZone missing that causes this issue?

- A. link to the DefaultZone
- B. pipe to the DefaultZone
- C. SIP trunk to the DefaultZone
- D. route pattern to the DefaultZone

Correct Answer: C

Section:

QUESTION 51

Which entry in the public (external) DNS is valid to configure DNS SRV records for a Cisco Mobile and Remote Access solution?

- A. `_cisco-uds._tcp.<domain>`
- B. `_cisco-mra._tls.<domain>`
- C. `_collab-edge._tls.<domain>`
- D. `_cisco-expwy._tls.<domain>`

Correct Answer: A

Section:

QUESTION 52



```
2021-02-02T12:18:27.359-08:00 expc tvcs: UTCTime="2021-02-02 20:18:27,359" Module="network.sip" Level="INFO": Action="Sent" Local-ip=1
2021-02-02T12:18:27.360-08:00 expc tvcs: UTCTime="2021-02-02 20:18:27,359" Module="network.sip" Level="DEBUG": Action="Sent" Local-ip=
SIPMSG:
REGISTER sip:cucm.pod1.local SIP/2.0
Via: SIP/2.0/TCP 10.0.101.115:5060;egress-zone=CEtcpucmpod1local;branch=z9hG4bKaa525ee7842f3b408b2cbc882ff5866237642.8b46bf0f88eff29ef
Via: SIP/2.0/TLS 10.0.101.119:7002;egress-zone=UC;branch=z9hG4bK0822ed2041bc4f7a15d68e86ce58290b2445.967ceda2f6ae2c01deb5e118f56ab29e;
Via: SIP/2.0/TLS 10.0.132.202:54451;branch=z9hG4bK00006696;received=10.0.132.202;ingress-zone=CollaborationEdgeZone
Call-ID: 005056ae-48d5084e-000041c1-00004e3b@10.0.132.202
CSeq: 4351 REGISTER
Contact: <sip:6649132f-1a5c-a445-9400-869c6960b0d9@10.0.101.115:5060;transport=tcp;orig-hostport=10.0.132.202:54451>;+sip.instance="cus
From: <sip:2000@cucm.pod1.local>;tag=005056ae48d5085000002633-0000339d
To: <sip:2000@cucm.pod1.local>
Max-Forwards: 14
Route: <sip:cucm.pod1.local;transport=tcp;lr>
User-Agent: Cisco-CSF
Expires: 3600
Date: Tue, 02 Feb 2021 20:18:26 GMT
Supported: replaces,join,sdp-anat,norefersub,resource-priority,extended-refer,X-cisco-callinfo,X-cisco-serviceuri,X-cisco-escapcodes,3
P-Asserted-Identity: <sip:2000@cucm.pod1.local>
Reason: SIP rcause=200;text="cisco-alarm:24 Name=CSFjabberuse ActiveLoad=Jabber_for_Windows-11.9.2.50390 InactiveLoad=Jabber_for_Windo
Session-ID: c0d0278100255000a0000dcf900d0000;remote=00000000000000000000000000000000
Content-Type: multipart/mixed;boundary=uniqueBoundary
Content-Length: 1271
2021-02-02T12:18:27.363-08:00 expc tvcs: UTCTime="2021-02-02 20:18:27,362" Module="network.sip" Level="INFO": Action="Received" Local-i
2021-02-02T12:18:27.363-08:00 expc tvcs: UTCTime="2021-02-02 20:18:27,363" Module="network.sip" Level="DEBUG": Action="Received" Local-
SIPMSG:
SIP/2.0 405 Method Not Allowed
Via: SIP/2.0/TCP 10.0.101.115:5060;egress-zone=CEtcpucmpod1localrt=7002;ingress-zone=UCZone,SIP/2.0/TLS 10.0.132.202:54451;branch=z9hG
Call-ID: 005056ae-48d5084e-000041c1-00004e3b@10.0.132.202
CSeq: 4351 REGISTER
From: <sip:2000@cucm.pod1.local>;tag=005056ae48d5085000002633-0000339d
To: <sip:2000@cucm.pod1.local>;tag=220085250
Allow: INVITE,OPTIONS,INFO,BYE,CANCEL,ACK,FRACK,UPDATE,REFER,SUBSCRIBE,NOTIFY
Server: Cisco-CUCM12.5
Date: Tue, 02 Feb 2021 20:18:27 GMT
Warning: 399 cucm "SIP trunk disallows REGISTER"
Content-Length: 0
```



Refer to the exhibit. An engineer is deploying mobile and remote access in an environment that already had functioning Business to Business calling. Mobile and remote access SIP registrations are failing. To troubleshoot, SIP logs were collected. How is this issue resolved?

- A. Change the SIP profile on the SIP trunk for the Expressway-E to Standard SIP Profile for TelePresence Endpoint
- B. Change the "Incoming Port" in the SIP Trunk Security Profile for the Expressway-C to not match SIP line registrations
- C. Enable autoregistration for the appropriate DN range on the Cisco UCM servers running the CallManager service
- D. Write a custom normalization script since the "vcs-interop" normalization script does not allow registrations

Correct Answer: B

Section:

QUESTION 53

Unified Communications status
 Unified Communications (last updated: 14:11:51 PST)
 Unified Communications status Enabled

Unified CM registrations	Domain configured but no active zone connection
IM and Presence Service	Domain configured but no active zone connection
XMPP Federation	Not configured (Configure a domain on Expressway-C)
Single Sign-On support	Not configured (Enable on the Unified Communications page)
OAuth token with refresh	Not configured (Enable on the Unified Communications page)

Activity

Unified CM calls: Current video	0
Unified CM calls: Current audio (SIP)	0
Current UCM/LDAP basic authenticated sessions	8
Total UCM/LDAP basic authenticated sessions	15
Total provisioning requests since last restart	21

Domains

Name	Services	Associated zones
pod1.local	Unified CM registrations, IM and Presence Service	No associated zones

Servers

IM and Presence Service nodes	1
Unified CM servers	1
Unity Connection servers	There are no Unity Connection servers configured.

Zones

There are no Unified Communications traversal zones configured. Configure a secure Unified Communications traversal zone connection between this Expressway-C and the Expressway-E

```
xstatus zones zone 2
's Zones: /
Zone:
2:
  Bandwidth:
  ClusterUsage: "0"
  LocalUsage: "0"
  Name: "EXPE.pod1.local"
  Status: "Active"
  TraversalClient:
Peer:
SIP:
  Address: "10.0.101.119"
  Apparent: "10.0.101.115:27240"
  LastStatusChange: "2021-02-02 14:26:21"
  Port: "7001"
  ResourceUsage:
  NonTraversalCallsAvailable: "1500"
  ProtocolMode: "Both"
  RegistrationsAvailable: "0"
  ResourceUsageValid: "True"
TURN:
  Port:
  Count: "0"
  Port: "3478"
  Ports:
  Count: "1"
  TURNRelaysAvailable: "1800"
  TraversalCallsAvailable: "300"
  Server: "TANDBERG/4137 (X12.5.3)"
  Status: "Active"
  Type: "TraversalClient"
```

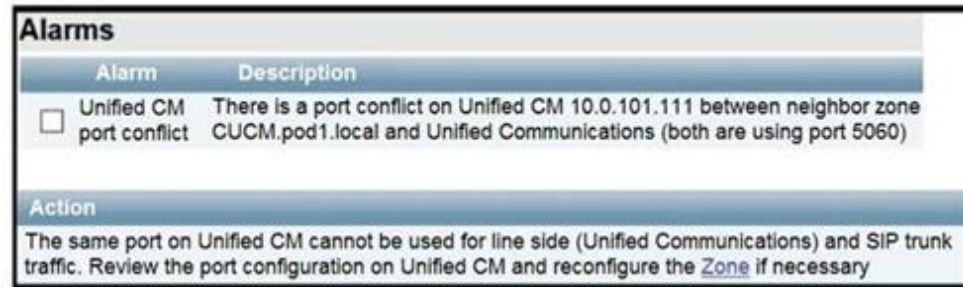
Refer to the exhibit. Logins and failing via mobile and remote access. How is this resolved?

- A. Mobile and remote access login has not been enabled for the domain configured in the Expressway-C. The domain must be edited to allow Cisco UCM registrations.
- B. SIP is disabled on the Expressway-E. The SIP protocol must be enabled on the server.
- C. No Cisco UCM servers are configured in the Expressway-C. Servers must be added for CallManager and IM and Presence services.
- D. Although a traversal client zone exists, there is no Unified Communications traversal client zone. One must be created.

Correct Answer: C

Section:

QUESTION 54



Alarms	
Alarm	Description
<input type="checkbox"/> Unified CM port conflict	There is a port conflict on Unified CM 10.0.101.111 between neighbor zone CUCM.pod1.local and Unified Communications (both are using port 5060)
Action	
The same port on Unified CM cannot be used for line side (Unified Communications) and SIP trunk traffic. Review the port configuration on Unified CM and reconfigure the Zone if necessary	


Refer to the exhibit. Mobile and remote access is being added to an existing B2B deployment and is failing. When the administrator looks at the alarms on the Expressway-C, the snippets are shown. Which configuration action should the administrator take to fix this issue?

- A. The listening port on the Expressway-C for SIP TCP must be changed to a value other than 5060
- B. The listening port on the Expressway-C for SIP TLS must be changed to a value other than 5061
- C. The listening port on the Cisco UCM for the Expressway-C SIP trunk must be changed to something other than 5060 or 5061
- D. The listening port on the Cisco UCM for the Expressway-C SIP trunk is set to something other than 5060 or 5061. It must be set to 5060 for insecure and 5061 for secure SIP

Correct Answer: A

Section:

QUESTION 55



Cisco Jabber

Cannot find your services automatically. Click advanced settings to set up manually.

jabberuser@pod1.local

Continue

```

Standard query 0x2b84 SRV _cisco-uds._tcp.pod1.local
Standard query response 0x2b84 No such name SRV _cisco-uds._tcp.pod1.local SOA ad.skype.local
Standard query 0x71d9 SRV _cuplogin._tcp.pod1.local
Standard query response 0x71d9 No such name SRV _cuplogin._tcp.pod1.local SOA ad.skype.local
Standard query 0x27bb SRV _collab-edge._tls.pod1.local
Standard query response 0x27bb No such name SRV _collab-edge._tls.pod1.local SOA ad.skype.local
Standard query 0xb09e SRV _collab-edge._tls.pod1.local
Standard query response 0xb09e No such name SRV _collab-edge._tls.pod1.local SOA ad.skype.local
Standard query 0xe2b5 A pod1.local
Standard query response 0xe2b5 A pod1.local SOA ad.skype.local
Standard query 0x687e A pod1
Standard query 0x687e A pod1
Standard query 0xa661 A loginp.webexconnect.com
Standard query response 0xa661 A loginp.webexconnect.com CNAME global-cas-c63.webexconnect.com
Standard query 0xcba SRV _cisco-uds._tcp.pod1.local
Standard query response 0xcba No such name SRV _cisco-uds._tcp.pod1.local SOA ad.skype.local
Standard query 0x8530 SRV _cuplogin._tcp.pod1.local
Standard query response 0x8530 No such name SRV _cuplogin._tcp.pod1.local SOA ad.skype.local
Standard query 0xd02d SRV _collab-edge._tls.pod1.local
Standard query response 0xd02d No such name SRV _collab-edge._tls.pod1.local SOA ad.skype.local
Standard query 0x91d6 SRV _cisco-uds._tcp.pod1.local
Standard query response 0x91d6 No such name SRV _cisco-uds._tcp.pod1.local SOA ad.skype.local
Standard query 0x0648 SRV _cuplogin._tcp.pod1.local
Standard query response 0x0648 No such name SRV _cuplogin._tcp.pod1.local SOA ad.skype.local
Standard query 0xb4fa SRV _cisco-uds._tcp.pod1.local
Standard query response 0xb4fa No such name SRV _cisco-uds._tcp.pod1.local SOA ad.skype.local
Standard query 0x5299 SRV _cuplogin._tcp.pod1.local
Standard query response 0x5299 No such name SRV _cuplogin._tcp.pod1.local SOA ad.skype.local

```

Refer to the exhibit. The administrator attempted to log in, but Jabber clients cannot log in via mobile and remote access. How is this issue resolved?

- A. Skype for Business mode must be disabled on the DNS server because it conflicts with Jabber login requirements.
- B. The domain pod1.local must be deprovisioned from the Webex cloud for Jabber logins.
- C. A DNS SRV record must be created for _collab-edge._tls.pod1.local that points to the Expressway-E.
- D. The username jabberuser@pod1.local is invalid. The user should instead sign-in simply as jabberuser.

Correct Answer: C
Section:

QUESTION 56


```

Module="network.tcp" Level="DEBUG": Dst-ip="10.0.101.119" Dst-port="7002" Detail="TCP Connecting"
Module="network.tcp" Level="DEBUG": Dst-ip="10.0.101.119" Dst-port="7002" Detail="TCP Connection Established"
Event="Outbound TLS Negotiation Error" Service="SIP" Src-ip="10.0.101.115" Src-port="27161" Dst-ip="10.0.101.119"
  Dst-port="7002" Detail="Peer's TLS certificate identity was unacceptable" Protocol="TLS" Common-name="10.0.101.119"

```

Valid from	Friday, October 18, 2019 ...
Valid to	Sunday, October 17, 202...
Subject	expe.pod1.local, Systems...
Public key	RSA (4096 Bits)
Public key parameters	05 00
Enhanced Key Usage	Server Authentication (1....
Subject Alternative Name	DNS Name=expe.pod1.local
Subject Key Identifier	c7b28ee75e675005198f9...

Location

Peer 1 address i SIP: Failed to connect to 10.0.101.119:7002 : TLS negotiation failure
Check the certificates for the traversal connection

Peer 2 address

Peer 3 address

Peer 4 address

Peer 5 address

Peer 6 address

Refer to the exhibit showing logs from the Expressway-C, a copy of the Expressway-E certificate, and the UC traversal zone configuration for the Expressway-C. An office administrator is deploying mobile and remote access and sees an issue with the UC traversal zone. The zone is showing “TLS negotiation failure”. What is causing this issue?

- A. The Expressway-E certificate includes the Expressway-C FQDN as a SAN entry
- B. The Expressway-C is missing the FQDN of Cisco UCM in the Common Name of its certificate
- C. In the UC Traversal Zone on the Expressway-C, the peer address is set to the IP of the Expressway-E, which is not a SAN entry in the Expressway-E certificate
- D. The Expressway-E does not have the FQDN of Cisco UCM listed as a SAN in its certificate

Correct Answer: D

Section:

QUESTION 57

Which part of a hybrid cloud-based deployment with Cisco Webex Messenger Service is used for meeting capabilities?

- A. Cisco Unified CM is always used for meeting capabilities.
- B. Depending on the media flow, the Webex Meeting Center or local Cisco Unified CM meeting resources are used for meeting capabilities.

- C. Depending on the origin of the user, the Webex Meeting Center or local Cisco Unified Communications Manager meeting resources are used for meeting capabilities.
- D. Cisco Webex Meeting Center is always used for meeting capabilities.

Correct Answer: A

Section:

QUESTION 58

Which step is required when configuring Cisco Webex Hybrid Message Service?

- A. Register Expressway-C Connector Hosts to the Cisco Webex Cloud.
- B. Register Expressway-C to Cisco Unified Communications Manager.
- C. Add Expressway-C and Cisco Unified CM to the Cisco Webex Cloud.
- D. Add Cisco Unity Connection to Expressway-E.

Correct Answer: A

Section:

QUESTION 59

Which service is available in a cloud-based deployment using Cisco Webex Messenger?

- A. Presence
- B. Phone services
- C. Voicemail
- D. Call forward services

Correct Answer: A

Section:

QUESTION 60

Which statement about the Cisco Webex hybrid service is true?

- A. Expressway Connector is required for an on-premises Exchange server.
- B. Hybrid Message service works only with Jabber cloud deployment.
- C. Directory Connector is required for Azure AD.
- D. Directory Connector must be deployed for OBTP to work with on-premises video devices.

Correct Answer: D

Section:

QUESTION 61

An administrator has been tasked to bulk entitle 200 existing users and ensure all future users are automatically configured for the Webex Hybrid Calendar Service. Which two options should be used to configure these users? (Choose two.)

- A. Export a CSV list of users in the Cisco Webex Control Hub, set the Hybrid Calendar Service to TRUE for users to be enabled, then import the file back to Manage Users menu in the Cisco Webex Control Hub.
- B. Set up an Auto-Assign template that enables Hybrid Calendar.
- C. Select the Hybrid Services settings card in the Cisco Webex Control Hub and import a User Status report that contains only users to be enabled.
- D. On the Users tab in the Cisco Webex Control Hub, check the box next to each user who should be enabled, then click the toggle for the Hybrid Calendar service to turn it on.



E. From Cisco Webex Control Hub, verify the domain that your Hybrid Calendar users will use, which automatically activates them for the service.

Correct Answer: A, E

Section:

QUESTION 62

What is a requirement when configuring the Cisco Webex Hybrid Message account for accessing the API of the Cisco UCM IM and Presence Service?

- A. Add a new end-user with the "Standard AXL API Access" role
- B. Use an application user with only the "Standard CTI Allow Control of All Devices" role
- C. Use an application user not the main administrator account with the "Standard AXL API Access" role
- D. Use the main administrator account if it includes the "Standard AXL API Access" role

Correct Answer: C

Section:

Explanation:

Reference: https://www.cisco.com/c/en/us/td/docs/voice_ip_comm/cloudCollaboration/spark/hybridservices/messageservice/cmgt_b_spark-hybrid-message-deployment-guide/cmgt_b_spark-hybrid-message-deploymentguide_chapter_010.html#:~:text=To%20enable%20Hybrid%20Message%20Service,a%20broker%20between%20the%20two.

QUESTION 63

The Cisco Webex Hybrid Message service is deployed geographically for separate Cisco Unified IM and Presence clusters. What must be configured in the Cisco Webex Control Hub to achieve this deployment?

- A. geo-locations
- B. distributed DNS
- C. verified domains
- D. resource groups

Correct Answer: D

Section:

Explanation:

Reference:

https://www.cisco.com/c/en/us/td/docs/voice_ip_comm/cloudCollaboration/spark/hybridservices/messageservice/cmgt_b_spark-hybrid-message-deployment-guide/cmgt_b_spark-hybrid-message-deployment-guide_chapter_00.html

QUESTION 64



```
C:\Users\Administrator>nslookup
Default Server: Win2016-AD.example.com
Address: 192.168.10.10

> set type=all
> _cisco-uds._tcp.example.com4
Server: Win2016-AD.example.com
Address: 192.168.10.10

_cisco-uds._tcp.example.com      SRV service location:
  priority      = 10
  weight        = 10
  port          = 8443
  svr hostname  = cucm.example.com

> _collab-edge._tls.example.com
Server: Win2016-AD.example.com
Address: 192.168.10.10

_collab-edge._tls.example.com    SRV service location:
  priority      = 10
  weight        = 10
  port          = 8443
  svr hostname  = expressway-e.example.com

>
```



Refer to the exhibit. When a Jabber user attempts to connect from outside of the organization, the user enters the login information as "user@example.com" and receives the error "Cannot find your services Automatically". The engineer tries to resolve SRV records used by Jabber.



DNS A record "expressway-e.example.com" points to the Expressway-E IP and "cucm.example.com" points to the Cisco Unified Communications Manager.



Which change resolves the DNS problem?

- A. Change cisco-uds to point to the Expressway-E FQDN.
- B. Change the collab-edge record to point to 5061.
- C. Remove the cisco-uds SRV record for the external DNS.
- D. Change the priority of the SRV record for cisco-uds.

Correct Answer: C

Section:

QUESTION 65

What is one of the user-related prerequisites for Jabber Team Messaging Mode Installation?

- A. Create user accounts in Cisco Webex Control Hub only.
- B. Create user accounts in Cisco Unified Communications Manager only.
- C. Create user accounts in Cisco Unified IM and Presence.
- D. Create user accounts in Cisco Unified CM and Cisco Webex Control Hub.

Correct Answer: D

Section:

QUESTION 66

An external Jabber device cannot register. While troubleshooting this issue, the engineer discovers that privately signed certificates are being used on Expressway-C and Expressway-E. What action will resolve this issue?

- A. The private CA certificate must be placed in the phone trust store
- B. The Jabber client must register to the Cisco UCM internally before it will register externally
- C. The device running the Jabber client must download and trust the private CA certificate
- D. The device running the Jabber client must use a VPN to register

Correct Answer: C

Section:

QUESTION 67

```
XmppSDK.dll #0, 201, Recv:<iq id='uid:527a7fe7:00000cfe:00000000' type='error'><bind
xmlns='urn:ietf:params:xml:ns:xmpp-stanzas' /></error></iq>

XmppSDK.dll #0, CXmppClient::onResourceBindError

XmppSDK.dll #0, 39, CTriClient::HandleDisconnect, reason:16
```

Refer to the exhibit. While troubleshooting Cisco Jabber login issues, there are some error messages.



Why is the Jabber client unable to sign in?

- A. down Cisco Unified Communications Manager server
- B. XMPP bind failures
- C. incorrect login credentials
- D. service discovery issues

Correct Answer: B

Section:

