

HP.HPE6-A72.by.Lon.57q

Number: HPE6-A72
Passing Score: 800
Time Limit: 120
File Version: 4.0

Exam Code: HPE6-A72

Exam Name: Aruba Certified Switching Associate



Exam A

QUESTION 1

DRAG DROP

Match the switching term to the correct definition.

Select and Place:

Term

-
-
-
-

Definition

defines the group of devices that are on the same network segment that are capable of receiving and responding to frames destined to FF:FF:FF:FF:FF:FF

the FIB used by switches matching known-source mac-addresses to the layer one port they are learned on

the mechanism used by Compute NICs and Switchports operating in half-duplex to detect and recover from frame collisions

the segment of a network connected by a shared medium, such as a hub, that is affected when two or more frames are sent at the same time

Correct Answer:

Term

Definition

Broadcast Domain

defines the group of devices that are on the same network segment that are capable of receiving and responding to frames destined to FF:FF:FF:FF:FF:FF

Forwarding Table

the FIB used by switches matching known-source mac-addresses to the layer one port they are learned on

CSMA/CD

the mechanism used by Compute NICs and Switchports operating in half-duplex to detect and recover from frame collisions

Collision Domain

the segment of a network connected by a shared medium, such as a hub, that is affected when two or more frames are sent at the same time

Section:
Explanation:



QUESTION 2
DRAG DROP
Match the term to the correct description.

Select and Place:

Term

- BGP
- Floating Static Routes
- OSPFv2
- OSPFv3
- RIPv2

Description

- used for creating backup routes by implementing a higher administrative distance
- a distance vector protocol
- an ipv4 link-state routing protocol that runs within an Autonomous System
- used to route traffic between Autonomous Systems
- a routing protocol capable of routing IPv6 packets

Correct Answer:

Term	Description
Floating Static Routes	used for creating backup routes by implementing a higher administrative distance
RIPv2	a distance vector protocol
OSPFv2	an ipv4 link-state routing protocol that runs within an Autonomous System
BGP	used to route traffic between Autonomous Systems
OSPFv3	a routing protocol capable of routing IPv6 packets

Section:

Explanation:

QUESTION 3

DRAG DROP

Match the terms to the correct layer of the OSI model.



Select and Place:

Layer	Term
Transport Layer	Frames
Network Layer	Packets
Physical Layer	RF Signals
Data Link Layer	Segments

Correct Answer:

Layer

Term

Data Link Layer	Frames
Network Layer	Packets
Physical Layer	RF Signals
Transport Layer	Segments

Section:

Explanation:

QUESTION 4

DRAG DROP

Match the available stacking feature to the correct AOS-CX switch model. Stacking features may be used more than once.

Select and Place:

Stacking Feature

VSF
VSX

Answer Area

Stacking Feature	AOS-CX Switch Model
------------------	---------------------

	6300M
	6300F
	8320
	8400
	6400



Correct Answer:

Stacking Feature

- VSF
- VSX

Answer Area

Stacking Feature **AOS-CX Switch Model**

- VSF 6300M
- VSF 6300F
- VSX 8320
- VSX 8400
- VSX 6400

Section:
Explanation:

QUESTION 5 DRAG DROP

Match each network protocol to the correct default listening port and transport protocol. Not all answers will be used.



Select and Place:

Default Port and Transport protocol		Network protocol
TCP 20, TCP 21	<input type="text"/>	DNS
TCP 23	<input type="text"/>	FTP
TCP 53	<input type="text"/>	HTTPS
TCP 443	<input type="text"/>	Telnet
UDP 20, UDP 21	<input type="text"/>	DHCP
UDP 23	<input type="text"/>	
UDP 53	<input type="text"/>	
UDP 67	<input type="text"/>	

Correct Answer:

Default Port and Transport protocol

TCP 20, TCP 21

FTP

TCP 23

Telnet

TCP 53

TCP 443

HTTPS

UDP 20, UDP 21

UDP 23

UDP 53

DNS

UDP 67

DHCP

Network protocol

Section:

Explanation:

QUESTION 6

What connectivity commands are available on AOS-CX switches? (Choose two.)

- A. netstatus
- B. traceroute
- C. ping
- D. pathping
- E. tracert

Correct Answer: B, C

Section:

QUESTION 7

What is true about VSX? (Choose two.)

- A. VSX is ideal for Campus access layer deployments where ease of deployment is needed.
- B. VSX allows upgrading members with near zero downtime or loss of packets.
- C. VSX is available on all Aruba OS-CX switches except the 6300F model.
- D. VSX is implemented on static port switches. VSX-plus needed to stack chassis together.
- E. VSX run separate control planes to reduce latency and improve performance.

Correct Answer: B, E



Section:

QUESTION 8

Refer to the exhibit.

```
Core-1# show interface mgmt
  Address Mode           : static
  Admin State           : up
  Mac Address           : 90:20:c2:bc:8e:01
  IPv4 address/subnet-mask : 10.1.1.1/24
  Default gateway IPv4   : 10.1.1.254
  IPv6 address/prefix    :
  IPv6 link local address/prefix:
  Default gateway IPv6   :
  Primary Nameserver     : 10.254.1.21
  Secondary Nameserver   :
Core-1# ping 10.1.1.254
connect: Network is unreachable
Core-1#
```

What change on Core-1 will result in a successful ping to 10.1.1.254 from the management interface?

- A. Use the command ping 10.1.1.254 vrf mgmt
- B. Use the command ping 10.1.1.254/24
- C. Change the Core-1 management address to 10.1.1.1/25 first
- D. The destination 10.1.1.254 requires configuring a static route



Correct Answer: A

Section:

Explanation:

Explanation/Reference:

QUESTION 9

ServiceOS login: admin

SVOS> password

Enter password: *****

Confirm password: *****

The login password to access an Aruba AOS-CX was lost. After connecting to the switch console port, a reboot is performed and the Service OS console is accessed as shown above.

What is the default password that is required for the admin account while under the Service OS console?

- A. No password is set for this account.
- B. "password"
- C. "forgetme!"
- D. The same login password that has lost originally.

Correct Answer: C

Section:

Explanation:

QUESTION 10

Refer to the exhibit.



The Aruba 8400 in the exhibit is member 2 of a VSX stack.

Which command will enter the interface sub configuration mode for the port, indicated by the orange square?

- A. 8400(config)# interface 2/4/15
- B. 8400(config)# interface 1/7/16
- C. 8400(config)# interface 1/4/15
- D. 8400(config)# interface 2/3/17

Correct Answer: A

Section:

QUESTION 11

What are two features of the three-tier designs? (Choose two.)

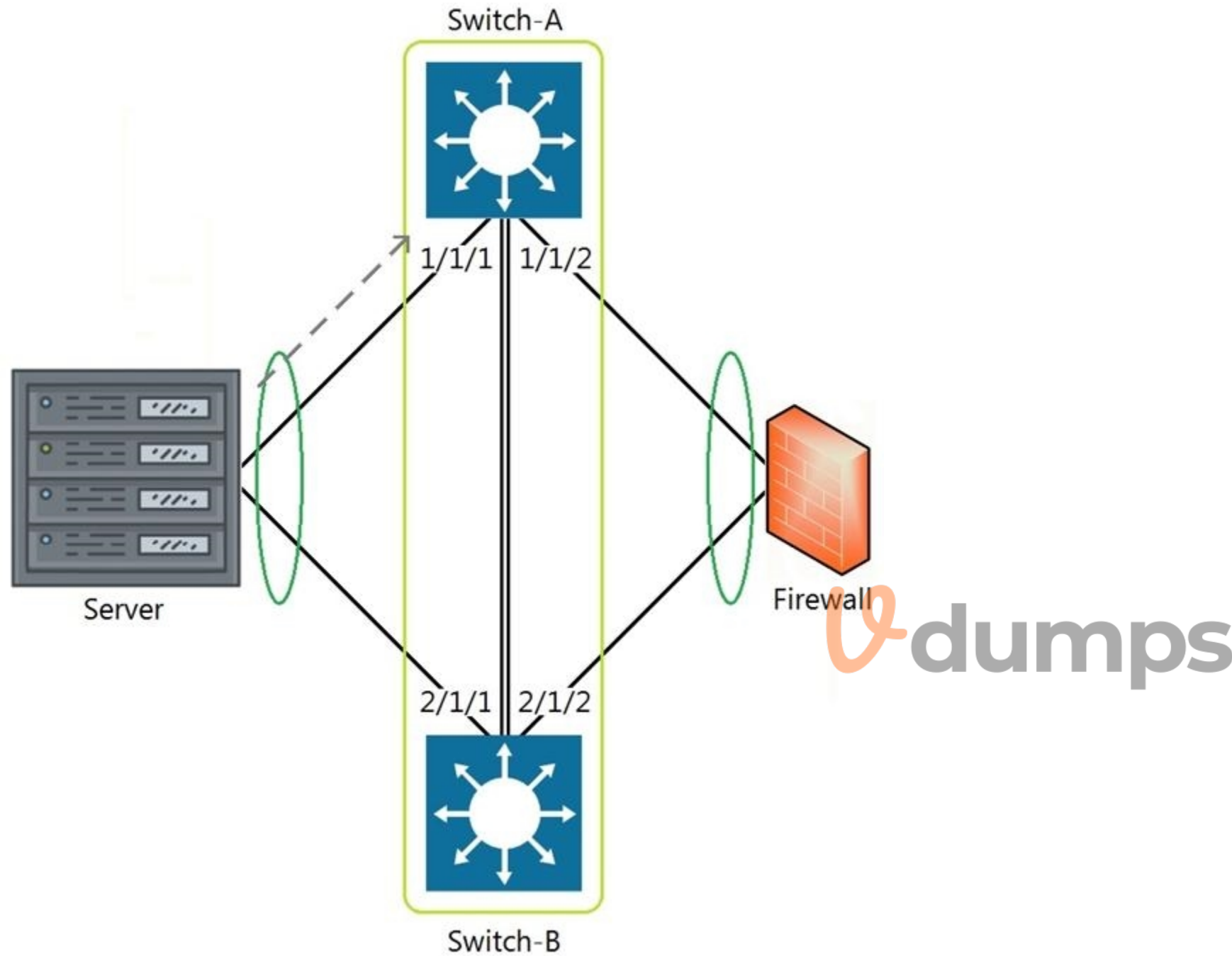
- A. removes the distribution layer in favor of a spine-leaf design used in modern data center deployments
- B. adds a distribution layer to free up resources from the Core for improved performance and routing throughput
- C. a more scalable design over by leveraging a distribution layer to handle Layer 3 routing and access control in large deployments
- D. uses only Layer 2 access on the Access and the Core with Layer 3 routing and access control provided at the distribution layer
- E. is considered legacy by requiring a large flat layer-two broadcast domain from Core to Access and should be avoided

Correct Answer: B, C

Section:

QUESTION 12

Refer to the exhibit.



The above scenario shows a packet from the Server destined for the Firewall. Switch-A and Switch-B are bundled as VSF stack. The LAG between the VSF stack and the firewall indicates a hash function to forward the packet on port 2/1/2.

Which statement is true regarding how Switch-A will forward the packet?

- A. Switch-A will forward the packet on port 1/1/2. VSF will override the typical LAG hash function used for the physical interface selection.
- B. Switch-A will drop the packet. Multi-Chassis lag to multi-chassis lag is not a supported feature of VSF.
- C. Switch-A will encapsulate the packet using GRE to forward to Switch-B in order for the packet to egress on port 2/1/2 per the hash function.
- D. Switch-A will forward the packet along the VSF link to Switch-B so that it will egress on port 2/1/2 per the hash function.

Correct Answer: D

Section:

QUESTION 13

The section in blue can be ignored.

```
SW1(config)# interface 1/1/1-1/1/2
```

```
SW1(config-if-<1/1/1-1/1/2)# vlan access 2
```

```
SW1(config-if-<1/1/1-1/1/2)# exit
```

```
SW1(config)# interface 1/1/11-1/1/17
```

```
SW1(config-if-<1/1/11-1/1/17)# vlan access 17
```

```
SW1(config-if-<1/1/11-1/1/17)# exit
```

After completing the above commands, what is the expected output of show vlan with no other vlan commanded having been added?

A.

```
SW1# show vlan
```

VLAN	Name	Status	Reason	Type	Interfaces
1	DEFAULT_VLAN_1	up	ok	default	1/1/2
2		up	ok	static	1/1/2
11		up	ok	static	1/1/17
12		up	ok	static	1/1/17
13		up	ok	static	1/1/17
14		up	ok	static	1/1/17
15		up	ok	static	1/1/17
16		up	ok	static	1/1/17
17		up	ok	static	1/1/17

B.

```
SW1# show vlan
```

VLAN	Name	Status	Reason	Type	Interfaces
1	DEFAULT_VLAN_1	up	ok	default	1/1/1-1/1/24
2		up	ok	static	1/1/1-1/1/2
17		up	ok	static	1/1/11-1/1/17

C.

```
SW1# show vlan
```

VLAN	Name	Status	Reason	Type	Interfaces
2	DEFAULT_VLAN_2	up	ok	static	1/1/1-1/1/2
17		up	ok	static	1/1/11-1/1/17

D.

```
SW1# show vlan
```

VLAN	Name	Status	Reason	Type	Interfaces
1	DEFAULT_VLAN_1	up	ok	default	<output omitted>
2		up	ok	static	1/1/1-1/1/2
17		up	ok	static	1/1/11-1/1/17

Correct Answer: D

Section:

QUESTION 14

What are two OSPF attributes within the hello messages that must match to successfully establish neighbor relationships? (Choose two.)

- A. Router ID
- B. Priority
- C. Hello and Dead intervals
- D. Area ID
- E. Process ID

Correct Answer: C, D

Section:

QUESTION 15

Your customer has 349 users in a two-story building.
What are two benefits of a 2-Tier design? (Choose two.)

- A. Layer 2 and Layer 3 protocols run close to the endpoints to better implement ACL and QoS policy at the edge.
- B. Improved performance by offloading processing from the Access layer to the Core.
- C. Use of layer 2 switches at the access layer can process and route traffic from attached APs.
- D. Support for WAN/MPLS, Internet, and Data Center directly on the Collapsed core.
- E. Provides a more cost effective solution given that no additional switches are required for a third tier.

Correct Answer: A, E

Section:

QUESTION 16

Which two options are the Layer 3 Routing protocols? (Choose two.)

- A. BGP
- B. LLDP
- C. OSPF
- D. MPLS
- E. 802.3ad

Correct Answer: A, C

Section:

QUESTION 17

What are the commands to disable SSH and HTTPS services from the default VRF?

- A. Core-1 (config)# no ssh server
Co re-1 (config)# no https-server
- B. Core-1# no ssh server vrf default
Core-1# no https-server vrf default
- C. Co re-1 (config)# no ssh server enable

Core-1 (config)# no https-server enable

- D. Core-1 (config)# no ssh server vrf default
- Core-1 (config)# no https-server vrf default

Correct Answer: D

Section:

QUESTION 18

What are two primary concerns regarding layer two loops in a redundant topology? (Choose two.)

- A. routing loops
- B. costs associated with upgrading from copper to fiber
- C. multiple frame copies leading to instability of the MAC address table
- D. security issues with a redundant loop indicating to hackers that a back-door exists
- E. broadcast storms

Correct Answer: C, D

Section:

QUESTION 19

What command will save your configuration on an Aruba AOS-CX switch so that your changes automatically load on next reboot?

- A. copy running-config checkpoint startup-config
- B. copy startup-config running-config
- C. copy running-config initial-checkpoint
- D. copy running-config default

Correct Answer: A

Section:

QUESTION 20

What is the binary conversion of the hexadecimal value 0x2001?

- A. 0010 0001
- B. 0002 0000 0000 0001
- C. 0011 0000 0000 0001
- D. 0010 0000 0000 0001

Correct Answer: D

Section:

QUESTION 21

What command displays information regarding the secondary image installed on an AOS-CX switch?

- A. show secondary
- B. show version detail
- C. show version



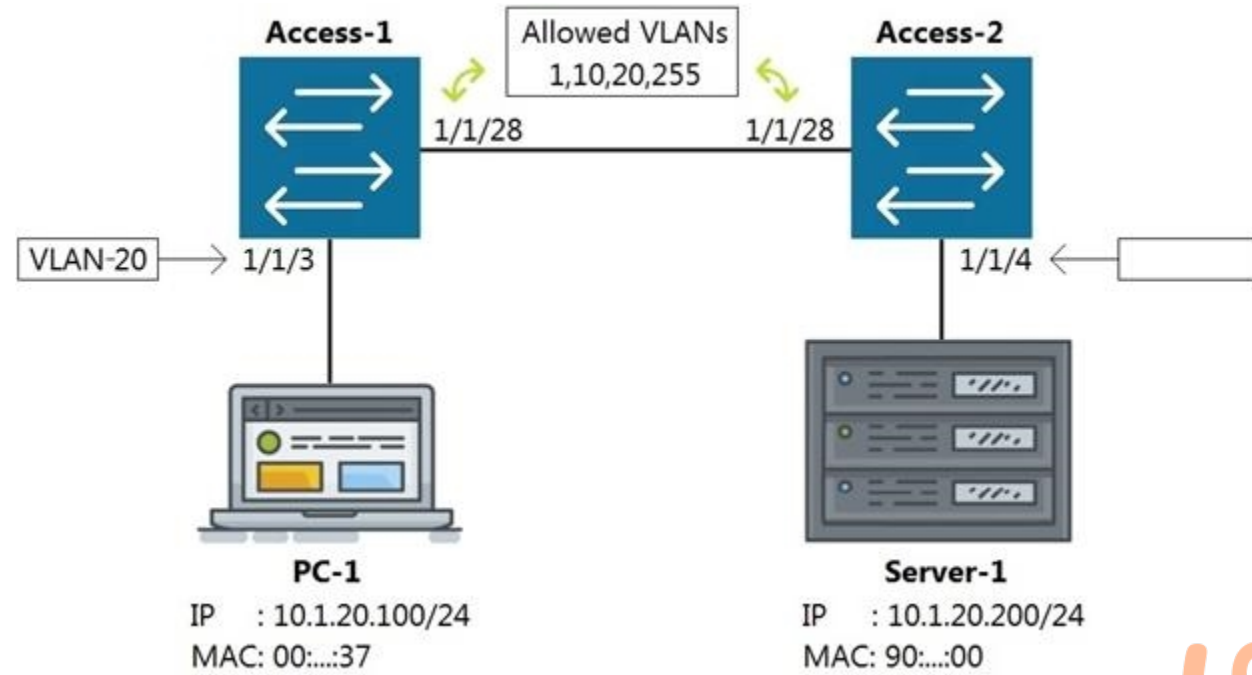
D. show images

Correct Answer: D

Section:

QUESTION 22

Refer to the exhibit



Which command on Access-2 port 1/1/4 will enable connectivity between PC-1 and Server-1 without any routing enabled in the network?

- A. Access-2 (config-if-1/1/4)# vlan access 1,10, 20, 255
- B. Access-2 (config-if-1/1/4)# vlan access 20
- C. Access-2 (config-if-1/1/4)# vlan 20 untag 1/1/4
- D. Access-2 (config-if-1/1/4)# vlan trunk allow 1, 10, 255

Correct Answer: B

Section:

QUESTION 23

Refer to the exhibit.

```
T11-Access-2# show lldp configuration
```

```
LLDP Global Configuration
```

```
=====
```

```
LLDP Enabled           : Yes
LLDP Transmit Interval : 30
LLDP Hold Time Multiplier : 4
LLDP Transmit Delay Interval : 2
LLDP Reinit Time Interval : 2
```

```
TLVs Advertised
```

```
=====
```

```
Management Address
Port Description
Port VLAN-ID
System Capabilities
System Description
System Name
OUI
```



```
LLDP Port Configuration
```

```
=====
```

PORT	TX-ENABLED	RX-ENABLED
1/1/1	Yes	Yes
1/1/2	Yes	Yes
1/1/27	Yes	Yes
1/1/28	Yes	Yes

<--- output omitted --->

What configuration is needed in order for "show LLDP configuration" to show this output?

- A. none: LLDP is enabled by default on Aruba switches
EL configuring LLDP both globally and on the interfaces
- B. enabling LLDP on the interfaces only
- C. configuring LLDP globally only

Correct Answer: A

Section:

QUESTION 24

What are the benefits of a 3-Tier design over a 2-Tier? (Choose two.)

- A. Offloading processing from the Core without routing at the Access layer.
- B. Can use lower speed links between Core to Aggregation and Aggregation to Access given the use of an Aggregation layer.
- C. Lowering the cost of a deployment due to needing less switches overall.
- D. Better scalability in a campus with a large number of buildings.
- E. Gaining the flexibility to connect the Data-Center to any Access layer switch.

Correct Answer: A, D

Section:

QUESTION 25

Refer to the exhibit.

VLAN	Name	Mode	Mapping
1	DEFAULT_VLAN_1	native-untagged	port
10	Sales	trunk	port
20	Service	trunk	port
30	Customer	trunk	port

Which command produces the above output?

- A. show interface port 1/1/10 trunk
- B. show vlan port 1/1/10
- C. show trunk port 1/1/10 extended
- D. show interface port 1/1/10 switchport

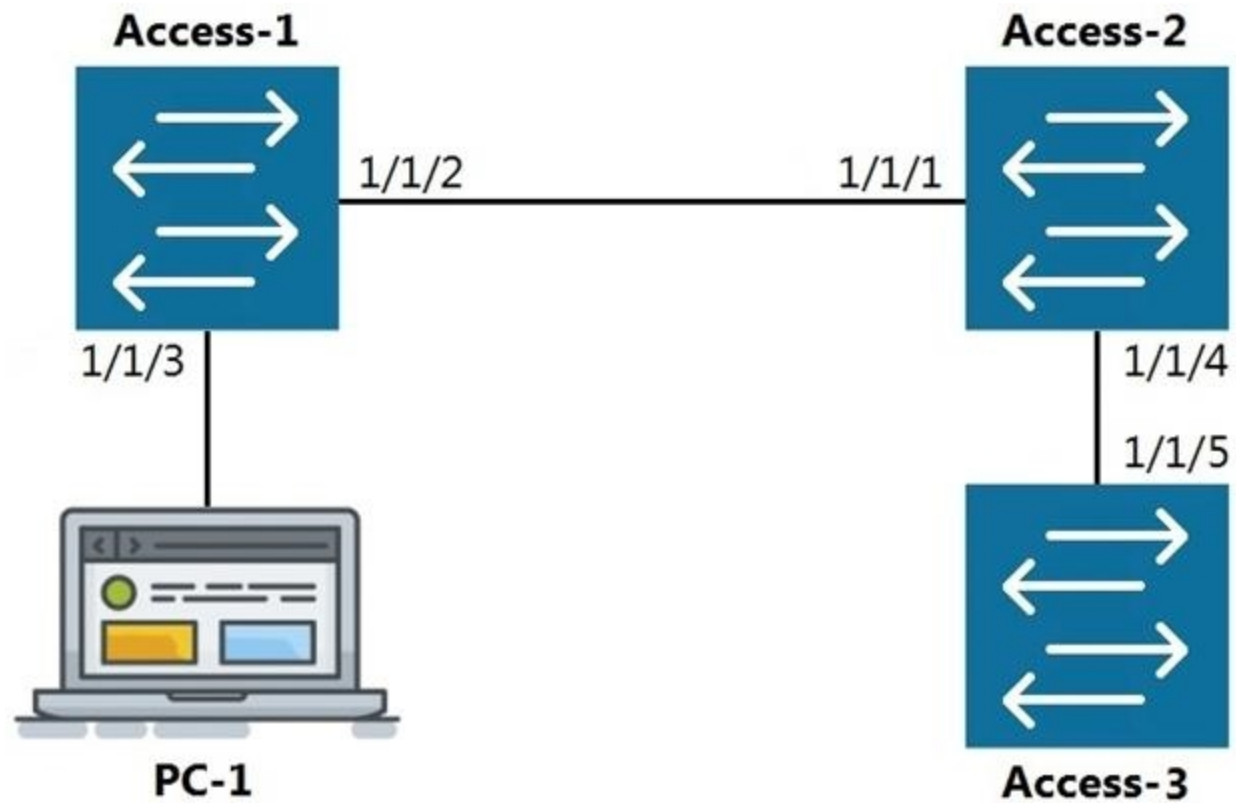
Correct Answer: C

Section:

QUESTION 26

Refer to the exhibit.





LLDP

The command `show LLDP neighbor-info` gets typed into Access-1. All switches are Aruba OS-CX switches.

What is the output of this command?

A.

LOCAL-PORT	CHASSIS-ID	PORT-ID	PORT-DESC	TTL	SYS-NAME
1/1/1	90:20:c2:bc:ed:00	1/1/2	1/1/2	120	Access-2
1/1/5	90:20:c2:bc:ef:00	1/1/2	1/1/2	120	Access-3

B.

LOCAL-PORT	CHASSIS-ID	PORT-ID	PORT-DESC	TTL	SYS-NAME
1/1/1	90:20:c2:bc:ed:00	1/1/2	1/1/2	120	Access-2

C.

LOCAL-PORT	CHASSIS-ID	PORT-ID	PORT-DESC	TTL	SYS-NAME
1/1/2	90:20:c2:bc:ed:00	1/1/1	1/1/1	120	Access-2
1/1/2	90:20:c2:bc:ef:00	1/1/5	1/1/5	120	Access-3

D.

LOCAL-PORT	CHASSIS-ID	PORT-ID	PORT-DESC	TTL	SYS-NAME
1/1/2	90:20:c2:bc:ed:00	1/1/1	1/1/1	120	Access-2

Correct Answer: D

Section:

QUESTION 27

Which command will suppress LLDP messages from egressing on a given port while still allowing LLDP to be enabled on the switch?

- A. switch (config-if)# no lldp interface (port) transmit
- B. switch(config-if)# no lldp transmit
- C. switch(config-if)# no lldp receive
- D. switch (config)# no lldp

Correct Answer: B

Section:

QUESTION 28

What is the process where a compute device converts logical data bits into the correct physical representation depending on the media?

- A. Demodulation
- B. Modulation
- C. Propagation
- D. Encapsulation



Correct Answer: D

Section:

QUESTION 29

Which two statements are true regarding Checkpoints on Aruba switches? (Choose two.)

- A. Rolling back to a prior checkpoint triggers a reboot of the switch.
- B. Stacking switches using VSF or VSX will disable the Checkpoint feature.
- C. A checkpoint is a snapshot of the running-configuration and relevant metadata at the time the checkpoint was created
- D. System-generated checkpoints are created after a configuration change and 5 minutes of inactivity.
- E. Checkpoints are available on AOS 5400R switches, as well as on all AOS-CX switches.

Correct Answer: C, E

Section:

QUESTION 30

Which two port characteristics must match between LAG interfaces? (Choose two.)

- A. Port number

- B. Duplex
- C. Member ID
- D. Media type
- E. Chassis number

Correct Answer: B, D

Section:

QUESTION 31

The customer has 778 developers testing computer games on the network.

Which two actions resolve Broadcast storms? (Choose two.)

- A. Manually disable the redundant link to immediately resolve the impacted portion of the network.
- B. Utilize Spanning Tree to dynamically disable all redundant links in a segment.
- C. Setting switch ports to half-duplex will resolve Broadcast storms using Carrier Sense Multiple-Access Collision Detection (CSMA/CD).
- D. Enable single Area Open Shortest Path First (OSPF) on all Layer 2 switches, but do not enable routing.
- E. Utilize Spanning Tree to dynamically block Designated ports in addition to Alternate ports.

Correct Answer: A, B

Section:

QUESTION 32

Interface 1/1/1 is up

Admin state is up

Link transitions: 1

Description: TO_PC-1

Hardware: Ethernet, MAC Address: 00:11:22:33:44:55

MTU 1500

Type 1GbT

Full-duplex

qos trust none

Speed 1000 Mb/s

Auto-negotiation is on

Flow-control: off

Error-control: off

MDI mode: MDIX

VLAN Mode: access

Access VLAN: 1111

Which command will produce the above output?

- A. show interface vlan 1111
- B. show interface 1/1/1
- C. show interface gigabit 1/1/1
- D. show vlan 1111

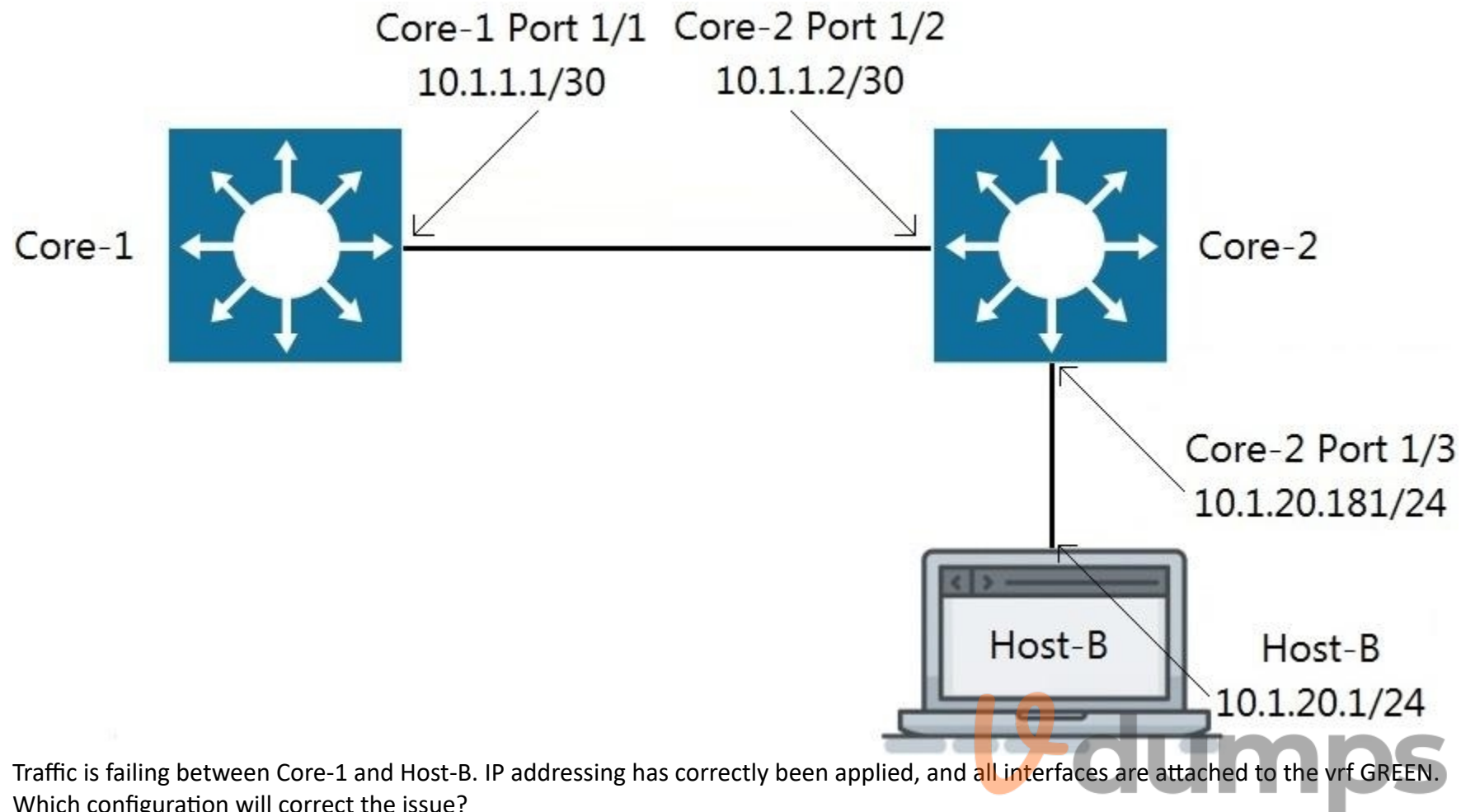
Correct Answer: B

Section:



QUESTION 33

Refer to the exhibit.



Traffic is failing between Core-1 and Host-B. IP addressing has correctly been applied, and all interfaces are attached to the vrf GREEN. Which configuration will correct the issue?

- A. Core-2(config)# ip route 0.0.0.0/0 10.1.1.1 vrf GREEN
Host-B: assign the default-gateway address 10.1.20.181
- B. Core-1 (config)# ip route 10.1.20.0/24 10.1.1.2 vrf GREEN
Host-B: assign the default-gateway address 10.1.20.181
- C. Core-1 (config)# ip route 10.1.20.0/24 10.1.1.2 vrf GREEN
Host-B: assign the default-gateway address 10.1.20.1
- D. Host-B: assign the default-gateway address 10.1.20.181

Correct Answer: B**Section:****QUESTION 34**

What is an available command on an Aruba AOS-CX switch that would back up the secondary image to a secure remote repository?

- A. backup secondary sftp://admin@10.1.1.21/GL.10.04.0003.swi
- B. copy secondary sftp://admin@10.1.1.21/GL. 10.04.0003.swi
- C. copy sftp://admin@10.1.1.21/GL. 10.04.0003.swi secondary
- D. copy secondary tftp://admin@10.1.1.21/GL. 10.04.0003.swi

Correct Answer: B

Section:

QUESTION 35

Refer to the exhibit.

```
watchlog/3      0      0      0
dbus-daemon     0      0      15
intfd           0      0      11
ext4-rsv-conver 0      0      0
scsi_eh_6       0      0      0
cpuhp/3         0      0      0
kworker/4:0     0      0      0
scsi_tmf_4      0      0      0
kworker/5:1H   0      0      0
smartd          0      0      3
fault-handlerd  0      0      10
btd             0      0      12
portd          0      0      12
migration/4    0      0      0
scsi_tmf_1     0      0      0
kworker/2:0H   0      0      0
kauditd        0      0      0
rmond          0      0      9
certmgr        0      0      13
icmp6_unreachab 0      0      0
Core-1#
```

The above output is the result of issuing the command show system resource-utilization. What command should be used to enable terminal output line by line or page by page?

- A. The command page
- B. The command terminal length 30
- C. The command more
- D. The command less

Correct Answer: A

Section:

QUESTION 36

Refer to the exhibit.



You are in the process of configuring VSF between Access-1 and Access-2. Access-1 has been configured as the VSF Master. What is a valid configuration for Access-2 to join the VSF stack?

- A. Access-2# configure
 Access-2(config)# vsf member 1
 Access-2(config)# vsf renum be r-to 2
 Access-2(vsf-member-1)# link 2 2/1/28
 Access-2(vsf-member-1)# exit
 This will save the VSF configuration and reboot the switch.
 Do you want to continue (y/n)? y
- B. Access-2# configure
 Access-2(config)# vsf member 2
 Access-2(vsf-member-1)# link 2 1/1/28
 Access-2(vsf-member-1)# exit
 This will save the VSF configuration and reboot the switch.
 Do you want to continue (y/n)? y
- C. Access-2# configure
 Access-2(config)# vsf member 2
 Access-2(vsf-member-1)# link 1 1/1/28
 Access-2(vsf-member-1)# exit
 This will save the VSF configuration and reboot the switch.
 Do you want to continue (y/n)? y
- D. Access-2# configure
 Access-2(config)# vsf member 1
 Access-2(vsf-member-1)# link 1 1/1/28
 Access-2(vsf-member-1)# exit
 Access-2(config)# vsf renum be r-to 2
 This will save the VSF configuration and reboot the switch. Do you want to continue (y/n)? y



Correct Answer: C
Section:

QUESTION 37
 Refer to the exhibit

```
Access-1(config)# show vlan
```

VLAN	Name	Status	Reason	Type	Interfaces
1	DEFAULT_VLAN_1	up	ok	default	1/1/1-1/1/28
50	Engineering	down	no_member_port	static	

What is true regarding VLAN 50 according to the diagram above?

- A. VLAN 50 is part of a switched virtual interface (SVI) that was never routed causing it to be down.
- B. Since VLAN 50 has not been assigned to any enabled physical port, the status is down.
- C. VLAN 50 is assigned only to Trunk ports which is why no ports are listed under interfaces.
- D. VLAN 50 was never added to the vlan-database and therefore is in a down state.

Correct Answer: B

Section:

QUESTION 38

Which command can be used to find the serial number of an Aruba OS-CX switch?

- A. The command inventory
- B. The command version
- C. The command show running-configuration
- D. The command show system

Correct Answer: D

Section:

QUESTION 39

Which statement is true regarding modern switching requirements?

- A. Most older legacy switches had high port bandwidth utilization and were future proof designed to meet today's power-over-Ethernet needs.
- B. Requirements for PoE are normally addressed using AC to DC power adapters. Concerns for port security for IoT devices are usually addressed using default wired encryption that all 802.3 Ethernet switches provide.
- C. While APs are common, most clients are still docked and only require traditional wired connections with only the occasional dedicated PoE switch to provide power for the low number of devices needed.
- D. Clients tend to prefer wireless connections, raising the need for PoE port access. There is also a growing amount of IoT devices that require security and port authentication options.

Correct Answer: D

Section:

QUESTION 40

Which two statements accurately describe the features of NetEdit? (Choose two.)

- A. NetEdit can be used to configure and validate any third-party device that supports SSH and REST access.
- B. NetEdit includes trial licensing for up to 10 nodes.
- C. NetEdit can perform configuration and compliance validation.
- D. NetEdit supports viewing and editing multiple devices using a single deployment plan.
- E. NetEdit can run on a mobile device using Android or Apple IOS.



Correct Answer: C, D

Section:

QUESTION 41

What are two mechanisms supported on AOS-CX 6300 switches used in Multi-active Detection to determine the status of the Primary member? (Choose two.)

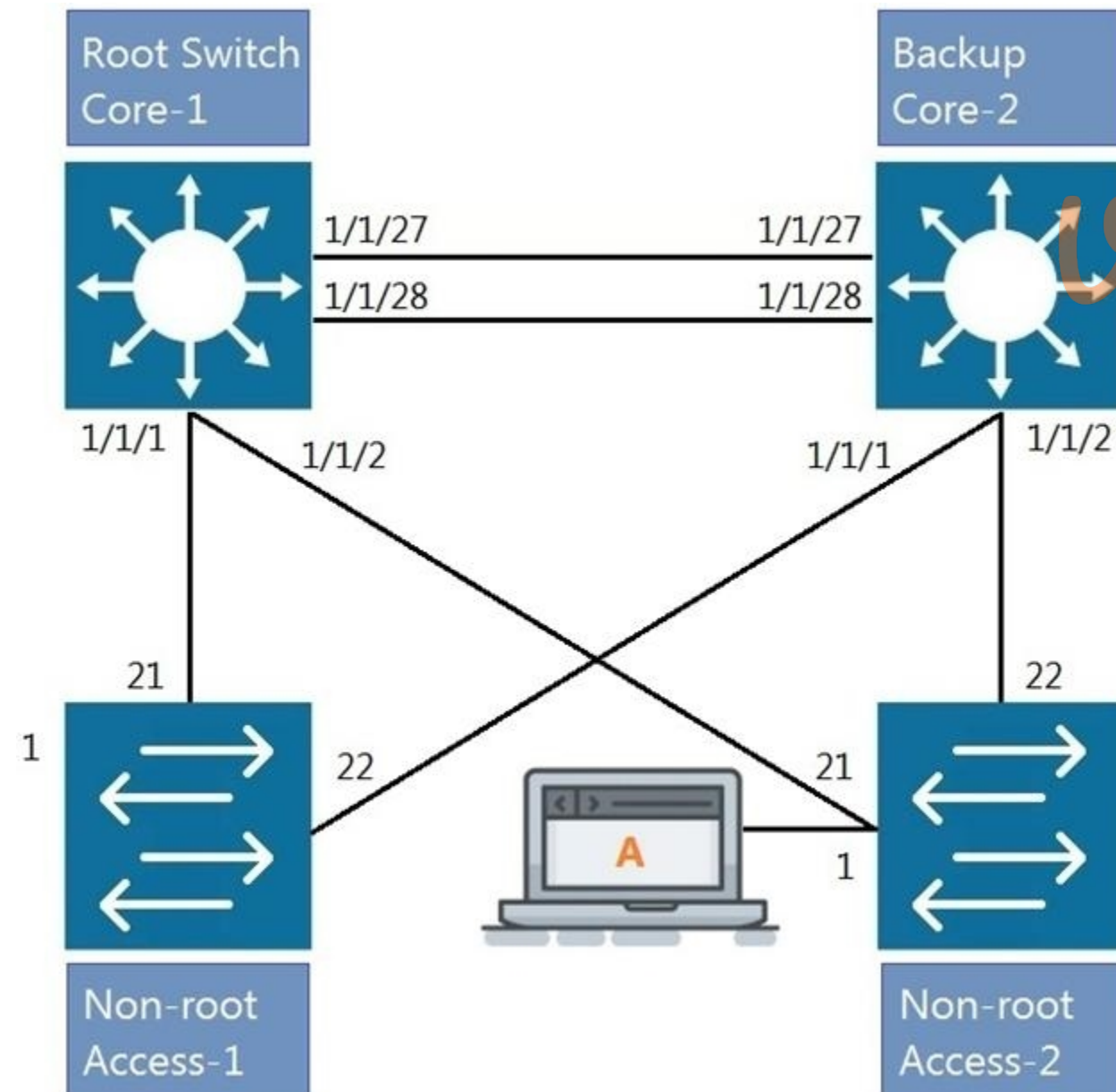
- A. Management interface split detection
- B. Peer switch-based detection
- C. Loopback keepalives
- D. ARP-based
- E. BFD

Correct Answer: A, D

Section:

QUESTION 42

Refer to the exhibit.



All four switches in the diagram have been configured with the region name "Aruba1".
What two other MSTP configurations must match for switches within the same MST region? (Choose two.)

- A. MST region type
- B. MST Bridge ID
- C. MST version number
- D. MST revision number
- E. MST VLAN to instance mapping

Correct Answer: D, E
Section:

QUESTION 43

Which two types of routes can be found in the IP routing table of an Aruba AOS-CX switch? (Choose two.)

- A. Local
- B. EIGRP
- C. BGP
- D. ISIS
- E. RIPng

Correct Answer: A, C
Section:

QUESTION 44

Which port or ports should be allowed through a firewall so that an AOS-CX switch can act as an SNMP Agent?

- A. UDP 1812 and UDP 1813
- B. UDP 161
- C. TCP 443
- D. UDP 162

Correct Answer: B
Section:

QUESTION 45

You have completed a successful VSF stack between two switches.
Without manually assigning a backup switch, what is the expected output when issuing a show vsf command?

- A.



```
T1-6300-A# show vsf
<omitted>
Mbr Mac Address      type      Status ID
-----
1    88:3a:30:a3:e5:40 JL660A   Commander
2    88:3a:30:a6:d9:80 JL660A   Secondary
```

B.

```
T1-6300-A# show vsf
<omitted>
Mbr Mac Address      type      Status ID
-----
1    88:3a:30:a3:e5:40 JL660A   Primary
2    88:3a:30:a6:d9:80 JL660A   Secondary
```

C.

```
T1-6300-A# show vsf
<omitted>
Mbr Mac Address      type      Status ID
-----
1    88:3a:30:a3:e5:40 JL660A   Master
2    88:3a:30:a6:d9:80 JL660A   Member
```

D.

```
T1-6300-A# show vsf
<omitted>
Mbr Mac Address      type      Status ID
-----
1    88:3a:30:a3:e5:40 JL660A   Master
2    88:3a:30:a6:d9:80 JL660A   Standby
```

Correct Answer: D

Section:

QUESTION 46

What are two methods for remotely managing an Aruba AOS-CX switch? (Choose two.)

A. SNMPv2c



- B. HTTPS
- C. USB-C console
- D. Telnet
- E. SSH

Correct Answer: B, E

Section:

QUESTION 47

Refer to the exhibit.

```
SW1# show vlan
```

VLAN	Name	Status	Reason	Type	Interfaces
1	DEFAULT_VLAN_1	up	ok	default	<output omitted>
10	Engineering	up	ok	static	1/1/1-1/1/7
20	Guest	up	ok	static	1/1/11-1/1/14

The above command was applied to an Aruba AOS-CX 6300M 24-port switch with 4-port SFP56 uplinks. All ports are set as access switchports. Which ports carry VLAN 1 traffic?

- A. 1/1/8, 1/1/10, 1/1/5-1/1/24
- B. 1/1/1-1/1/28
- C. 1/1/1-1/1/24
- D. 1/1/8-1/1/10, 1/1/5-1/1/28

Correct Answer: D

Section:

QUESTION 48

What are two available options as part of a DHCP offer message? (Choose two.)

- A. SSID
- B. DNS server IP
- C. Subnet Mask
- D. LLDP-MED
- E. VLAN ID

Correct Answer: B, C

Section:

QUESTION 49

Refer to the exhibit.



```
                Mstr
+----+   +----+
| 2 |1==1| 1 |
+----+   +----+

Access-1(config)# █
```

What VSF command produces the above output?

- A. show vsf member
- B. show vsf link
- C. show vsf topology
- D. show vsf detail

Correct Answer: C

Section:

Explanation:

Reference: <https://techhub.hp.com/eqinfo/lib/Aruba/QS-CX-10.04/5200-6790/index.html#GU-ID-88F65EB4-C1F9-49C7-9FB2-F994AB9D0D8F.html>

QUESTION 50

What is Deep Packet Inspection?

- A. a machine learning method of packet inspection for the purpose of choosing which dynamic routing protocol to automatically assign
- B. a concept that applies to firewalls, when examining packets only up through Layer 4
- C. a function of Policy Based Routing that examines the entire IPv4 header to forward traffic based on factors other than destination address
- D. a firewall process of examining the packet header all the way to Layer 7 in order to determine if the packet should be permitted or denied

Correct Answer: D

Section:

QUESTION 51

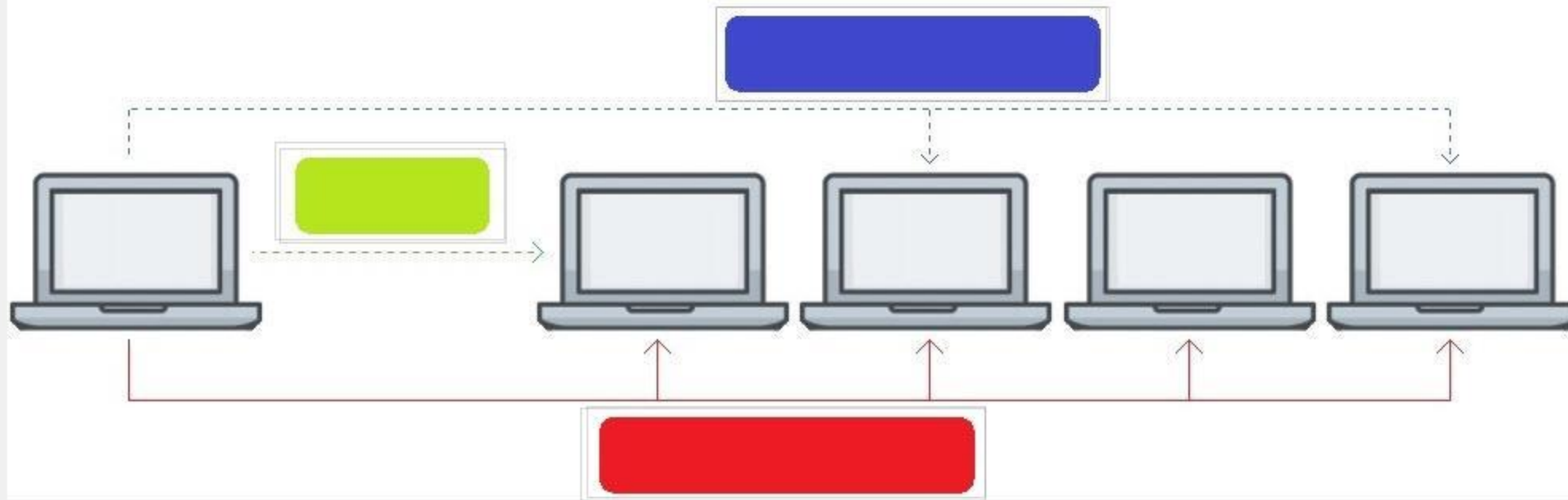
HOTSPOT

Click on the colored box that corresponds with the line that best represents Unicast traffic flow.

Hot Area:



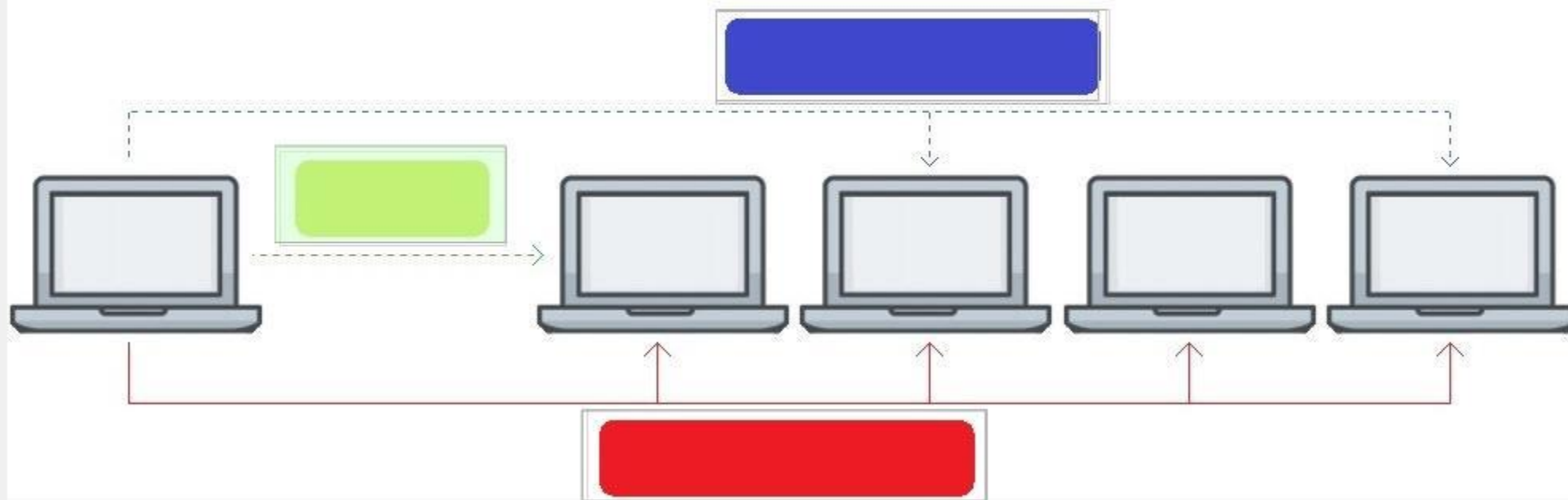
Answer Area



Answer Area:



Answer Area



Section:

Explanation:

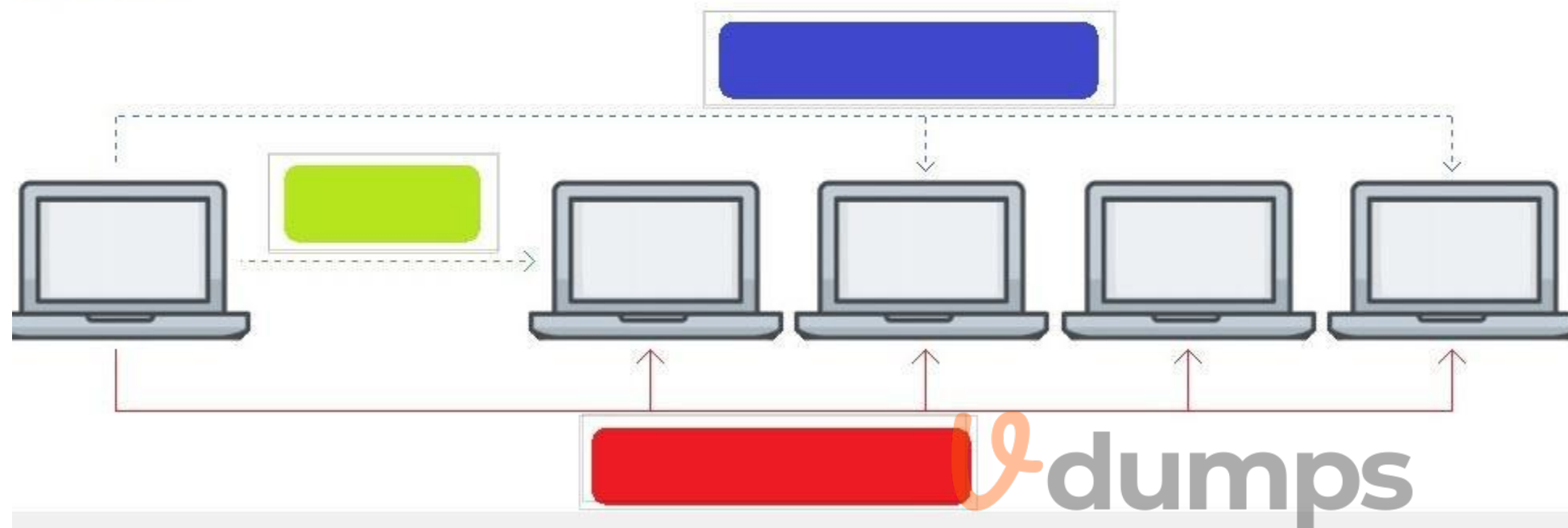
QUESTION 52

HOTSPOT

Click on the colored box that corresponds with the line that best represents Broadcast traffic flow.

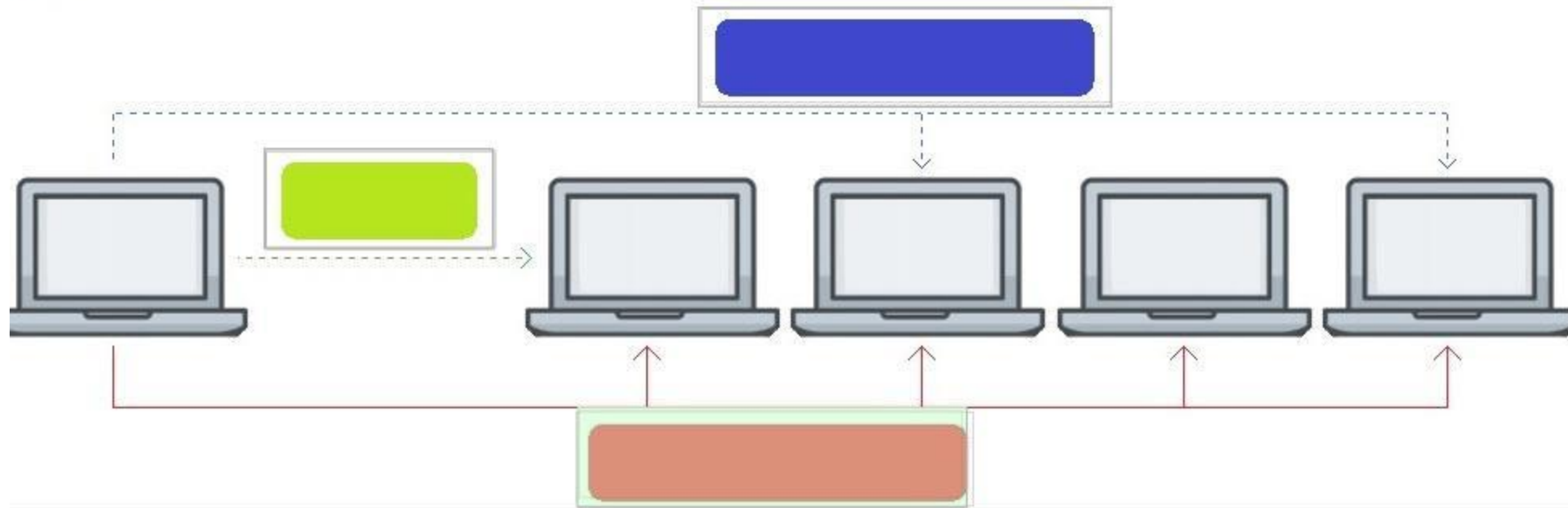
Hot Area:

Answer Area



Answer Area:

Answer Area



Section:

Explanation:

QUESTION 53

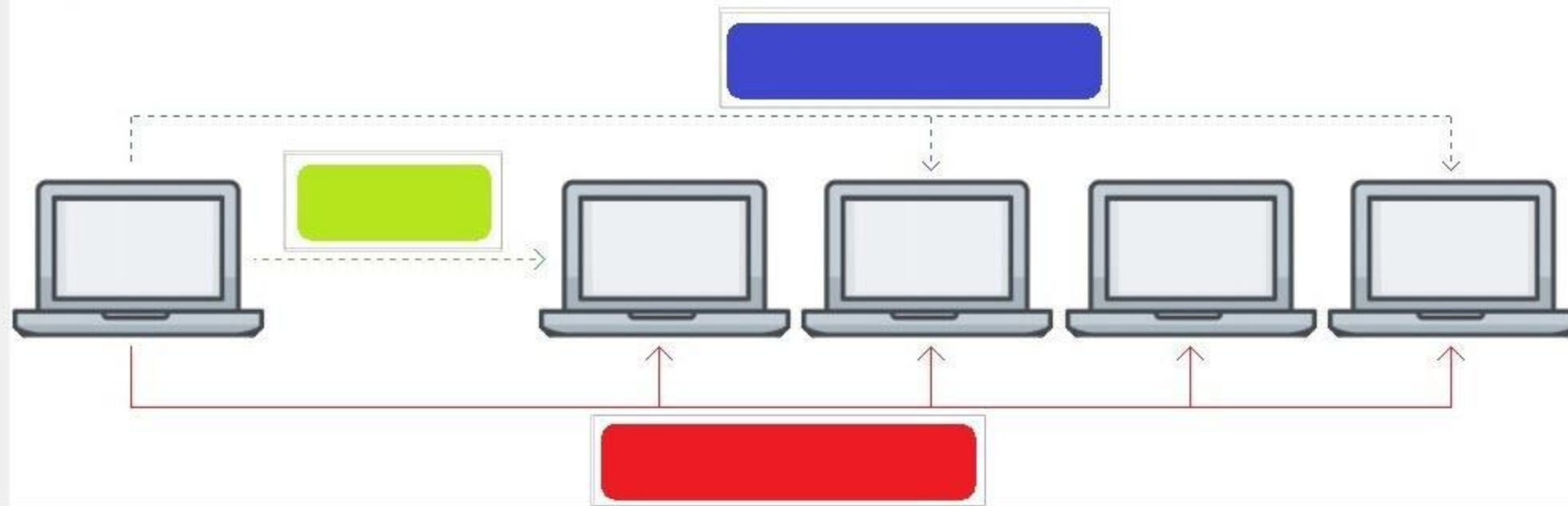
HOTSPOT

Click on the colored box that corresponds with the line that best represents Multicast traffic flow.

Hot Area:

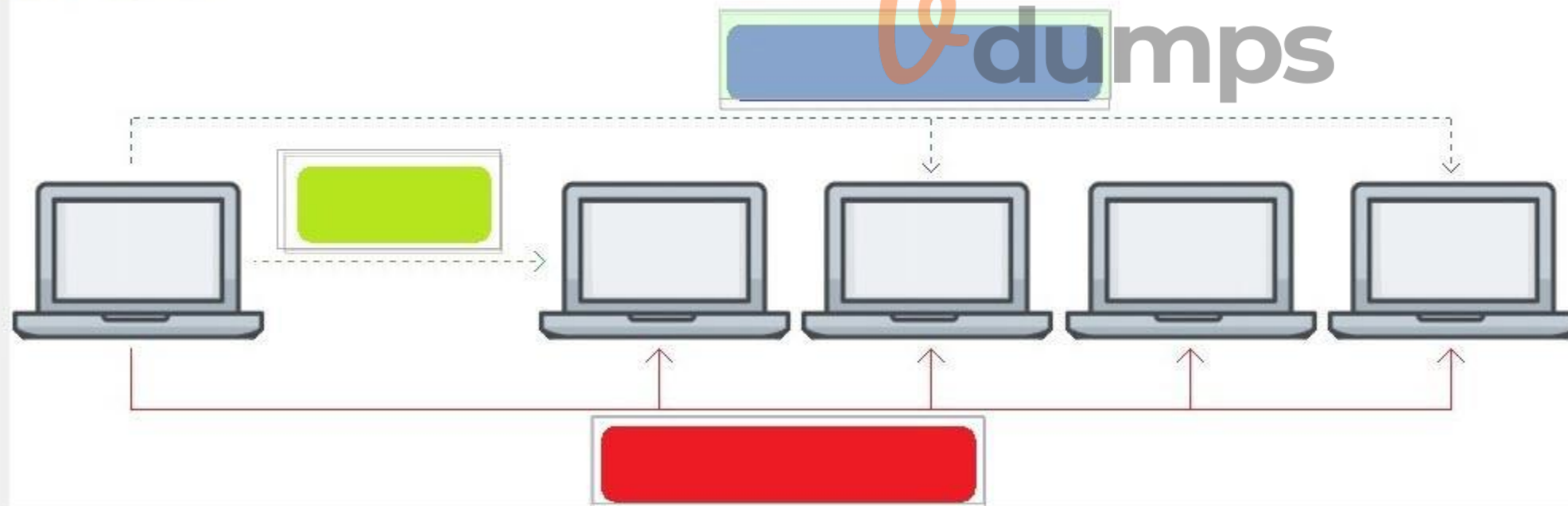


Answer Area



Answer Area:

Answer Area



Section:

Explanation:

Blue Box

QUESTION 54

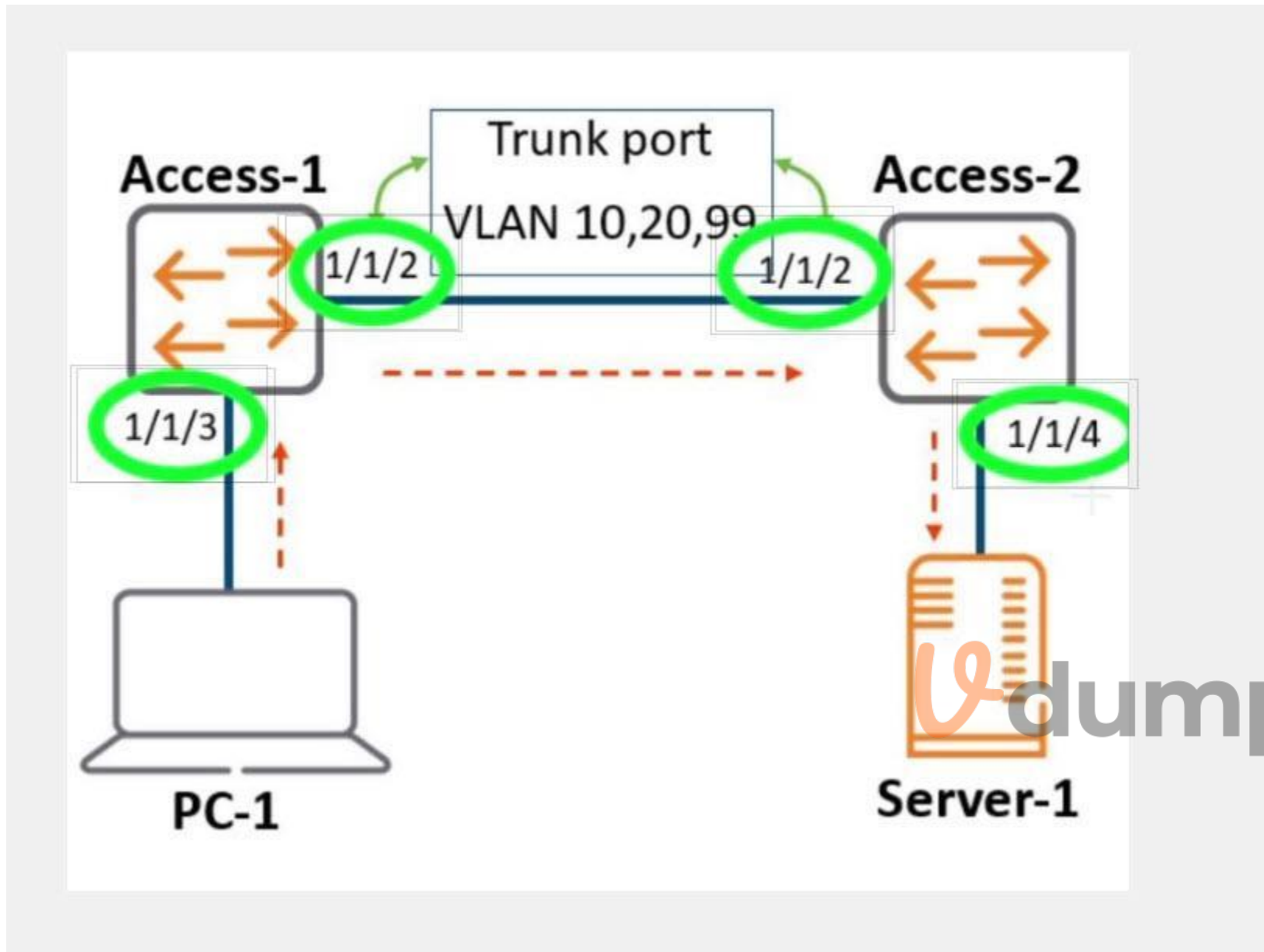
HOTSPOT

Review the exhibit.

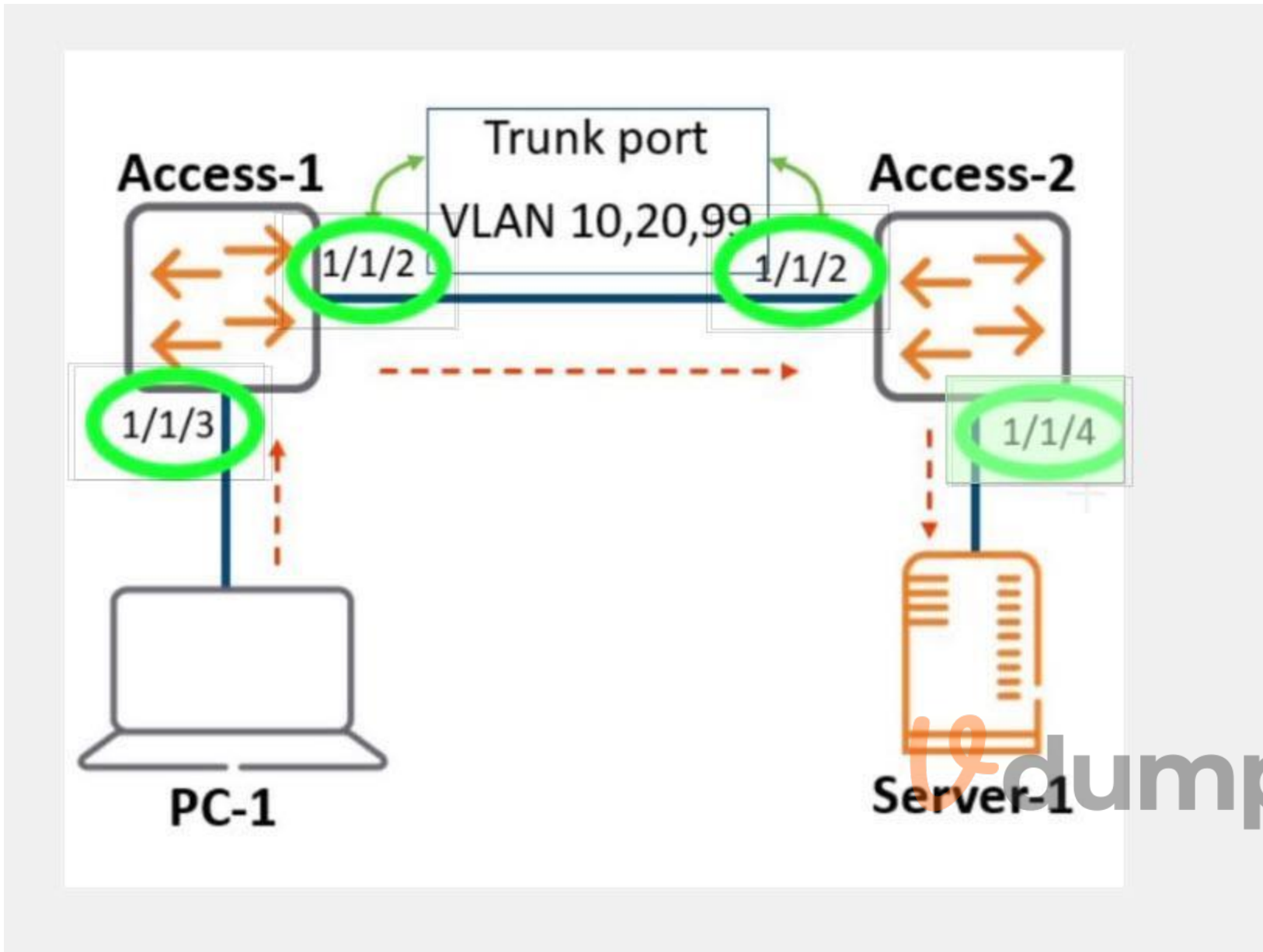
As the frame traverses from **PC-1** to **Server-1**, the VLAN tag will be removed.

Click on the interface (circled in green) where the VLAN tag will be removed.

Hot Area:



Answer Area:



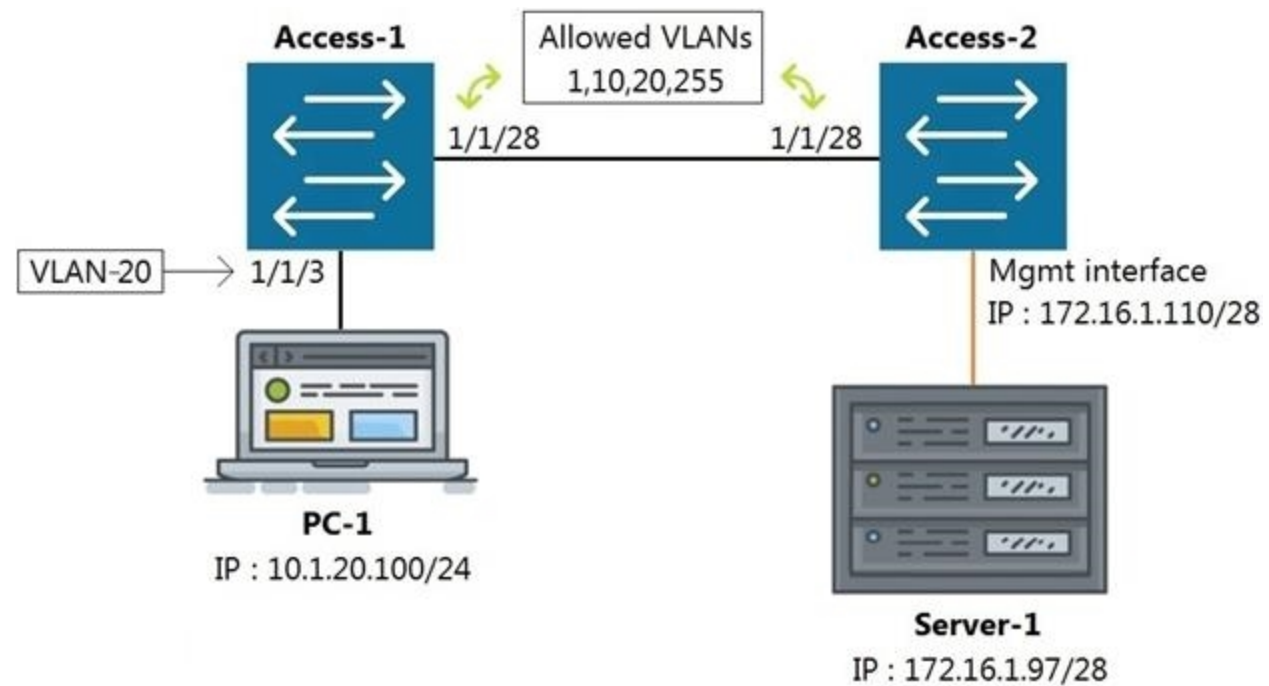
Section:

Explanation:

Port 1/1/4 on Access-2.

QUESTION 55

Refer to the exhibit.



All switches are running Aruba OS-CX. While working in the terminal of Access-2, you are unable to reach Server-1 using SSH. What is the correct command to ping Server-1 from Access-2 to test reachability?

- A. Access-2# ping6 172.16.1 97 vrf mgmt
- B. Access-2# ping 172.16.1.97
- C. Access-2# ping 172.16.1.97 vrf default
- D. Access-2# ping 172.16.1.97 vrf mgmt

Correct Answer: D

Section:

QUESTION 56

Which statement is correct regarding powering an Aruba Access Point?

- A. PoE or PoE+ is only used with Ethernet that is carried over multi-mode fiber cabling.
- B. Using switchports for this reason is unnecessary, because Aruba Access Points typically use an AC to DC power adapter to draw power.
- C. PoE or PoE+ enabled switchports are rarely used given concerns about causing electrical interference, with the data also carried over Ethernet cabling.
- D. Most administrators use PoE or PoE+ enabled switchports to provide both Ethernet connectivity and power to the AP.

Correct Answer: D

Section:

QUESTION 57

What is a benefit of choosing a 3-Tier design with routing at the Aggregation layer?

- A. Better Core router performance by offloading processing
- B. Shifting endpoint access to the Aggregation layer from the Access layer
- C. Using access control lists (ACLs) at the Core to improve performance
- D. Connecting WAN/MPLS and Data center access to the Aggregation layer



Correct Answer: A
Section:

