

NetApp.NS0-527.by.Ane.83q

Number: NS0-527  
Passing Score: 800  
Time Limit: 120  
File Version: 54.0

**Exam Code: NS0-527**



## Exam A

### QUESTION 1

A storage administrator is reviewing NAS volume space allocation and is concerned that the Snapshot copies that are recently created to protect the volumes are not storing the data from the volumes. One volume contains over 20 GB of data, although the latest SnapShot copy contains only 198 KB of data.

In this scenario, which statement is true?

- A. ONTAP references metadata when creating Snapshot copies instead of copying data blocks.
- B. The Snapshot policy is defined to create the Snapshot copy with only the most recent data changes.
- C. ONTAP uses data from all Snapshot copies when restoring of the volume is necessary.
- D. The Snapshot copies are created by using a background process that takes time to build.

**Correct Answer: A**

**Section:**

### QUESTION 2

You are creating daily SnapVault backups of a NAS volume that contains the data for your business critical application. You discover that corruption began two weeks ago on the data on that volume.

In this scenario, which statement is true?

- A. The restore is disruptive, and all of the most recent Snapshot copies are preserved.
- B. The restore is nondisruptive, and all of the most recent Snapshot copies are preserved.
- C. The restore is disruptive, and all Snapshot copies that are older than two weeks are preserved.
- D. The restore is nondisruptive, and all Snapshot copies that are older than two weeks are preserved.

**Correct Answer: C**

**Section:**

### QUESTION 3

You want to modify the existing Snapshot copy schedule to allow for more granularity in your ability to recover data after a corruption or loss.

In this scenario, which two tools allow you to accomplish this task (Choose two.)

- A. OnCommand System Manager
- B. OnCommand Unified Manager
- C. NetApp SnapCenter
- D. ONTAP CLI

**Correct Answer: B, D**

**Section:**

### QUESTION 4

Which two configurations would be used to protect volumes in a production ONTAP system at two different disaster recovery (DR) locations? (Choose two.)

- A. SnapMirror in a fan-out topology
- B. SVM DR in a cascade topology

- C. SnapMirror in a cascade topology
- D. SVM DR in a fan-out topology

**Correct Answer: A, B**

**Section:**

#### QUESTION 5

You are asked to protect your customer's Exchange environment. You deploy SnapCenter 4.1 and the plug-in for Microsoft Exchange Server. While creating the backup policy, you select the Full and Log Backup from the list of supported backup types.

In this scenario, what would the Full and Log Backup type allow you to protect within Exchange?

- A. all databases but no transaction logs
- B. all databases and all transaction logs
- C. all uncommitted transaction logs and all of the databases
- D. all transaction logs but none of the databases

**Correct Answer: B**

**Section:**

#### QUESTION 6

Your customer is running an older cluster that uses Data ONTAP 8.1 Cluster-Mode. They would like to create a SnapMirror relationship with their new ONTAP 9.5 cluster.

In this scenario, what must the customer do to create the SnapMirror relationship?

- A. The customer can create a DP type SnapMirror relationship without needing to perform an upgrade.
- B. The customer must first upgrade the Data ONTAP 8.1 Cluster-Mode storage array to at least ONTAP 9.1 and then create the XDP SnapMirror relationship.
- C. The customer must first upgrade the Data ONTAP 8.1 Cluster-Mode storage array to at least ONTAP 8.3 and then create the XDP SnapMirror relationship.
- D. The customer can create a XDP type SnapMirror relationship without needing to perform an upgrade.

**Correct Answer: C**

**Section:**

#### QUESTION 7

Click the Exhibit button.

## Relationships

Create Edit Delete Operations Refresh

Source Storage Virtual...	Source Volume	Destination Vol...	Destination Storang...
snap_src1	mirror_me	mirror_me_dest	snap_src1

Source Location: snap\_src1:mirror\_me Is Healthy: ● Yes  
Destination Location: snap\_src1\_mirror\_me\_dest Relationship State: Uninitialized  
Source Cluster: cluster1 Network Compression: Not Applicable  
Destination Cluster: cluster1 Ratio:  
Transfer Schedule: None  
Data Transfer Rate: Unlimited  
Lag Time: None

Details Policy Details Snapshot Copies

Your customer wants to protect a volume and replicate it to a secondary volume. The customer has tried to configure this relationship using OnCommand System Manager. Upon reviewing this newly configured relationship, you discover that the configuration does not satisfy the customer's stated requirements.

Referring to the exhibit, what should you do to ensure that the volume is protected?

- A. Delete the relationship and recreate it.
- B. Resynchronize the relationship.
- C. Initialize the relationship.
- D. Change the schedule to hourly.



**Correct Answer: A**

**Section:**

### QUESTION 8

Which two cloud providers allow you to provision Cloud Volumes ONTAP as a SnapMirror destination? (Choose two.)

- A. Azure
- B. DigitalOcean
- C. AWS
- D. RackSpace

**Correct Answer: A, C**

**Section:**

### QUESTION 9

Click the Exhibit button.

Extend Protection	Edit	About	Quiesce	Break	Remove	Resume	Resynchronize	Initialize/Update
View: All Volume Relationships	Lag Status	Source Volume	Destination Volume	Lag Duration	Schedule	Transfer St...		
<input checked="" type="checkbox"/>	<span style="color: orange;">!</span>	finance	svm4_finance_mirror	183 Weeks 6 Days				Idle
<input checked="" type="checkbox"/>	<span style="color: green;">✔</span>	busapps_datastore	svm5_busapps_datast...	44 Minutes 38 Seconds	hourly			Idle
<input checked="" type="checkbox"/>	<span style="color: green;">✔</span>	sales_east	svm8_sales_east_mirror	44 Minutes 38 Seconds	hourly			Idle
<input checked="" type="checkbox"/>	<span style="color: green;">✔</span>	support	svm8_support_mirror1	44 Minutes 38 Seconds	hourly			Idle
<input checked="" type="checkbox"/>	<span style="color: green;">✔</span>	mgmt_datastore	svm1_mgmt_datastor...	41 Minutes 49 Seconds	hourly			Idle
<input checked="" type="checkbox"/>	<span style="color: green;">✔</span>	vdi_datastore	svm1_vdi_datastore ...	41 Minutes 49 Seconds	hourly			Idle
<input checked="" type="checkbox"/>	<span style="color: green;">✔</span>	sales_west	svm4_sales_west_mir...	41 Minutes 49 Seconds	hourly			Idle

You have been receiving the lag status error notifications shown in the exhibit. What must you do to correct this problem?

- A. Resynchronize the relationship.
- B. Add a schedule to the relationship.
- C. Fan out the relationship.
- D. Quiesce the relationship.

**Correct Answer: A**

**Section:**

**QUESTION 10**

You are the administrator of an ONTAP 9.7 cluster. You configured an hourly Snapshot schedule for all volumes. One of your users accidentally deleted an important spreadsheet file on an SMB share. This file must be restored within a minimum amount of time.

Which two actions satisfy this requirement? (Choose two.)

- A. On the cluster CLI, issue the volume clone restore command.
- B. On the cluster CLI, issue the volume snapshot restore-file command.
- C. In Windows Explorer, right-click on the SMB share where the file was deleted, go to "Previous Versions" and select the file, then copy it to the original location.
- D. In ONTAP System Manager, navigate to the volume where the share resides, click on "Snapshot Copies" and restore the latest Snapshot copy.

**Correct Answer: B, C**

**Section:**

**QUESTION 11**

You are asked to re-purpose a NetApp FAS cluster. You need to verify that all encrypted data has been securely erased. Which two features would allow you to securely re-purpose the array? (Choose two.)

- A. Secure Purge
- B. SnapLock Compliance
- C. Disk Sanitize
- D. NetApp Aggregate Encryption

**Correct Answer: A, D**

**Section:**

**Explanation:**

Reference: <https://docs.netapp.com/ontap-9/index.jsp?topic=%2Fcom.netapp.doc.pownve%2FGUID-EAD13D8E-0219-45B6-A2C6-B25B76C9CA1A.html>

#### QUESTION 12

Click the Exhibit button.

```
cluster1::*> network test-path -source-node node1 -destination-cluster cluster1 -destination node node2
```

```
Test Duration: 10.65 secs
Send Throughput: 1092.65 MB/sec
Receive Throughput: 1092.65 MB/sec
MB Sent: 11633.69
MB Received: 11633.69
Avg Latency: 64.40 ms
Min Latency: 2.41 ms
Max Latency: 2099.17 ms
```

You need to verify that you have a 10 Gb path between two clusters for SnapMirror traffic. Referring to the exhibit, how fast is the network path between the clusters?

- A. 10 Mb
- B. 100 Mb
- C. 1 Gb
- D. 10 Gb

**Correct Answer: C**

**Section:**

**Explanation:**

Reference: <https://docs.netapp.com/ontap-9/topic/com.netapp.doc.dot-cmnmg/Network%20and%20LIF%20management.pdf>

#### QUESTION 13

Which two statements are correct about configuring a peering connection between clusters?

(Choose two.)

- A. The LIFs should be on the same subnet.
- B. You must use at least one intercluster LIF per node.
- C. You must use one cluster LIF per node per network.
- D. The intercluster LIFs must have full connectivity to each other.

**Correct Answer: B, D**

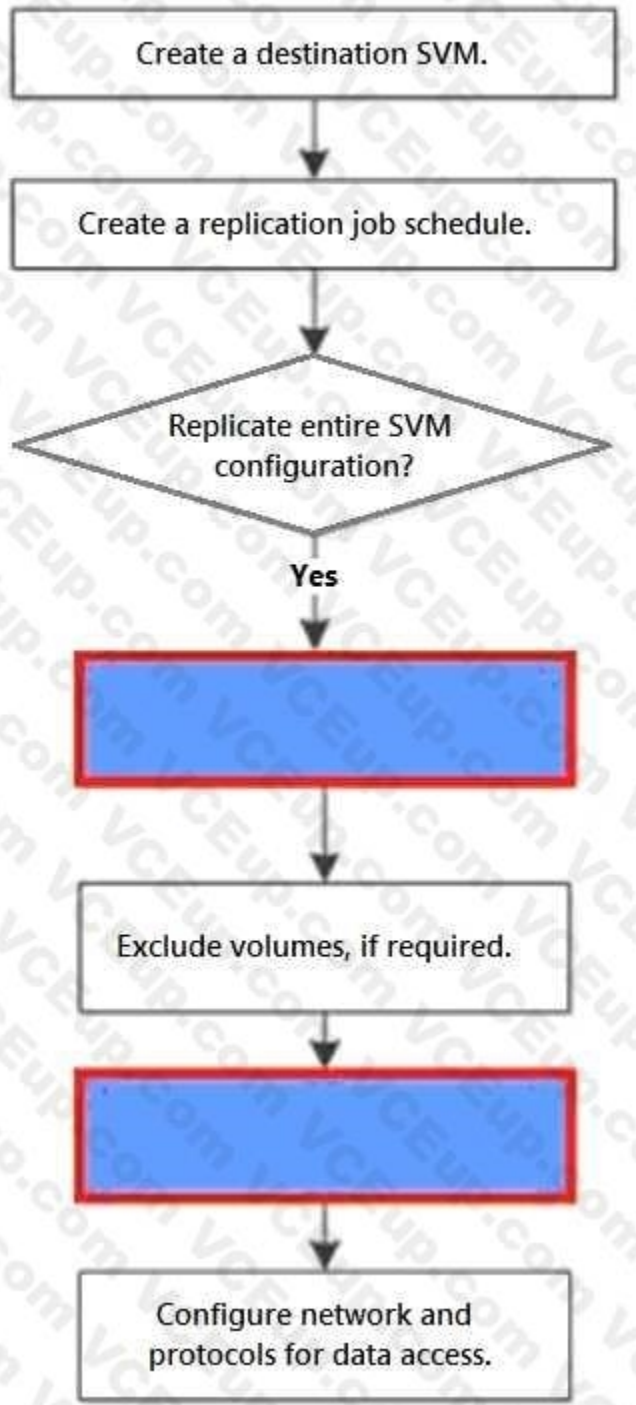
**Section:**

**Explanation:**

Reference: <https://docs.netapp.com/ontap-9/index.jsp?topic=%2Fcom.netapp.doc.powcsp%2FGUID-0F81B700-7B79-456F-9C89-3A7D6451AEB6.html>

**QUESTION 14**

Click the Exhibit button.



You must set up SVM replication for the first time using CLI. This replication will be used for DR purposes. The SVM configuration does not need to be replicated at this time. In this configuration, you will be reusing a default policy. Referring to the exhibit, what are two missing steps from the SVM replication workflow? (Choose two.)

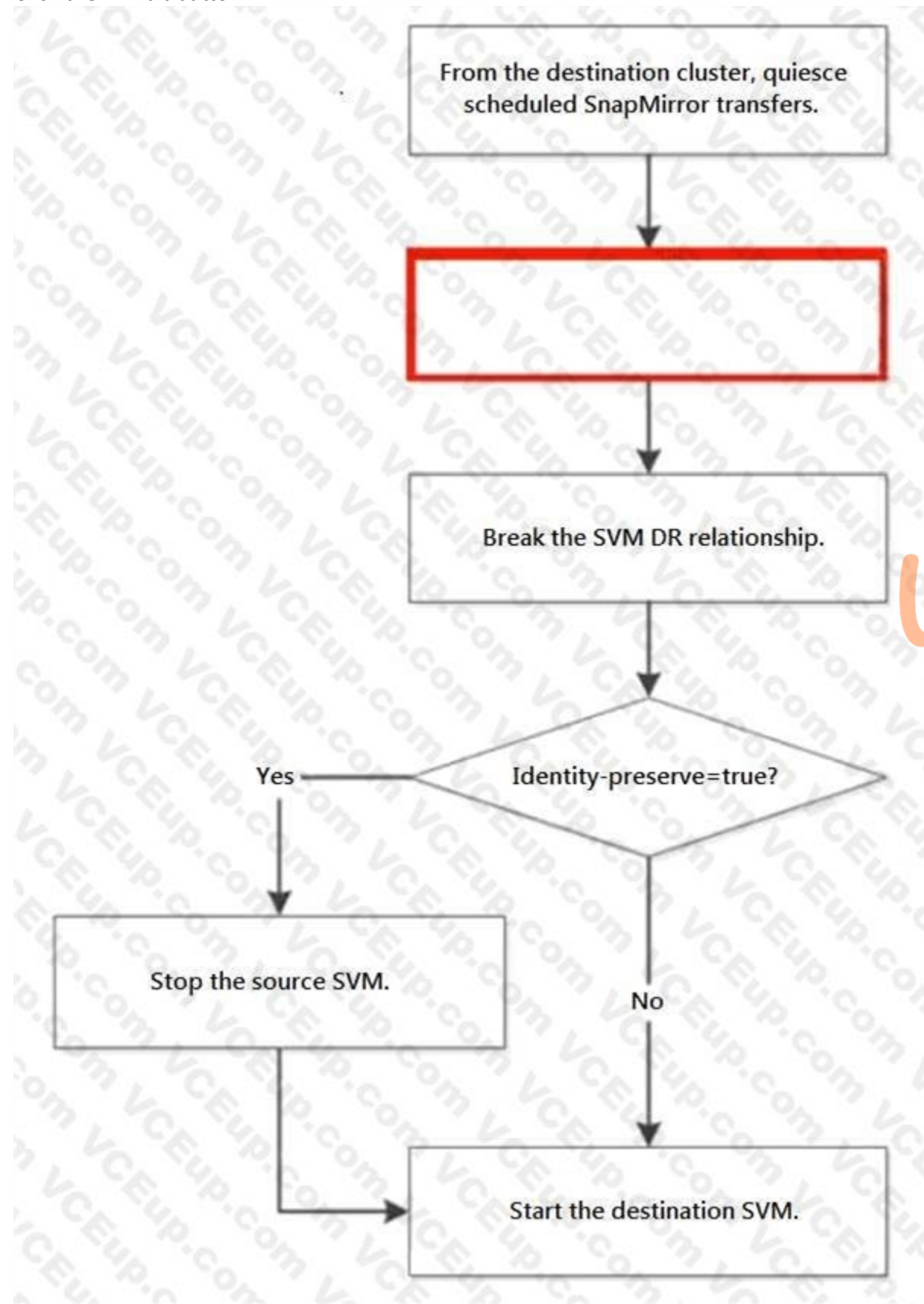
- A. Exclude specific LIFs and protocols from the replication policy.
- B. Create a relationship with the id-preserve option set to false.
- C. Initialize the newly created SnapMirror relationship.
- D. Initialize the relationship with the id-preserve option set to true.

Correct Answer: B, D

Section:

QUESTION 15

Click the Exhibit button.



 **vdumps**

In an ONTAP environment, an SVM-DR relationship exists between your AFF A220 cluster and your FAS2720 cluster, with identity preserve enabled. You are asked to test the disaster recovery workflow in an upcoming maintenance window. Referring to the exhibit, which step should be performed next to test the recovery workflow?



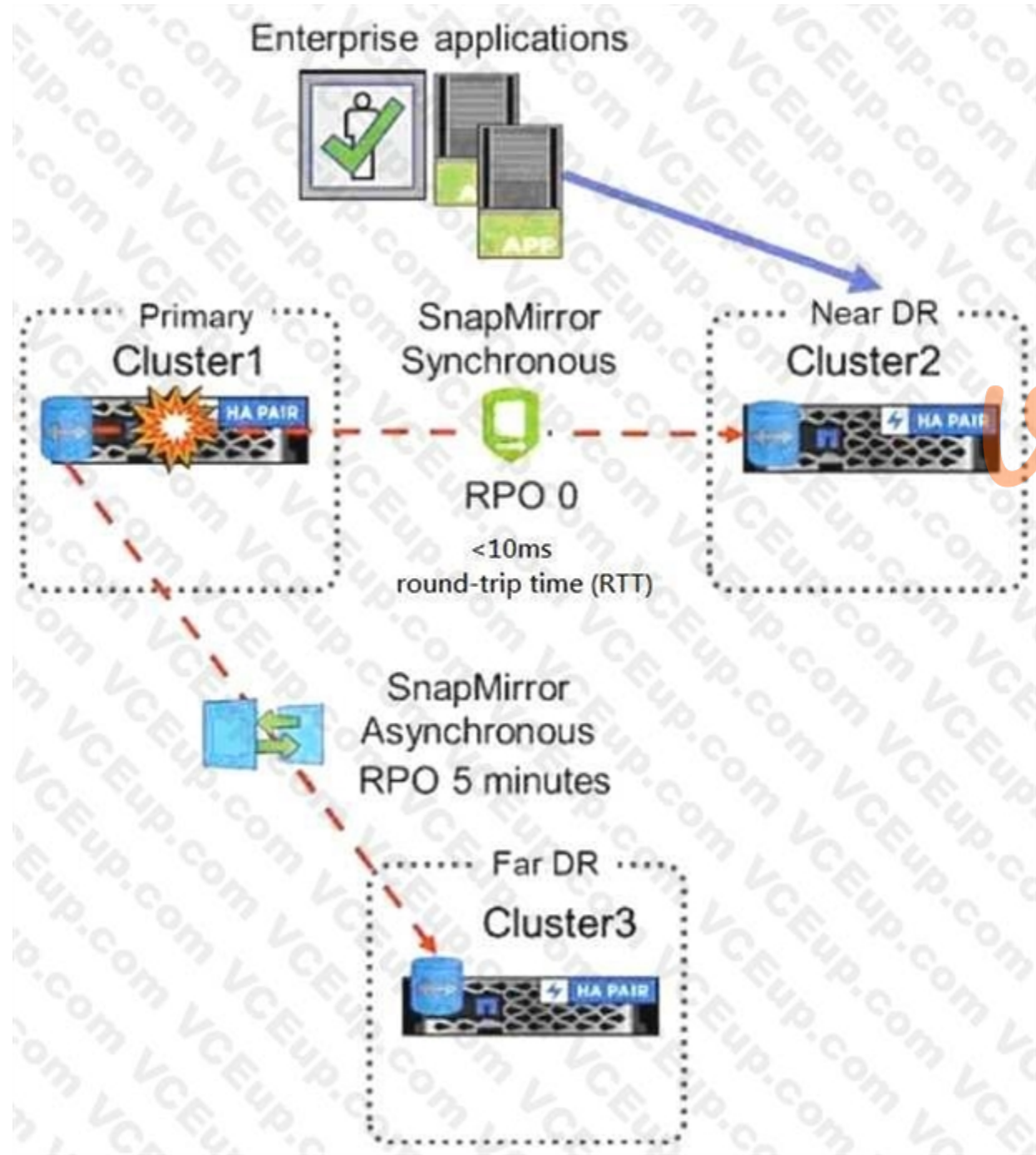
- A. Delete the SVM-DR relationship.
- B. Pause any ongoing transfers.
- C. Abort any ongoing transfers.
- D. Update any ongoing transfers.

**Correct Answer: C**

**Section:**

**QUESTION 16**

Click the Exhibit button.



Referring to the exhibit, which three would be used to configure the three-way Data Center Disaster Recovery topology replication schedules? (Choose three.)

- A. Active IQ Unified Manager

- B. Active IQ
- C. ONTAP CLI
- D. ONTAP Select
- E. ONTAP System Manager

**Correct Answer: C, D, E**

**Section:**

**Explanation:**

Reference: [http://197.253.9.244/ontap%209-5/Cluster%20Admin/2\\_Student%20Guide/STRSW-ILTONTAPADM\\_StudentGuide.pdf](http://197.253.9.244/ontap%209-5/Cluster%20Admin/2_Student%20Guide/STRSW-ILTONTAPADM_StudentGuide.pdf)

#### QUESTION 17

You want to use a Fabric Pool to store destination SnapMirror data to an external capacity tier. Which tiering policy would be used in this scenario?

- A. auto
- B. snapshot-only
- C. none
- D. backup

**Correct Answer: D**

**Section:**

**Explanation:**

Reference: <https://community.netapp.com/t5/ONTAP-Discussions/FabricPool-tiering-Policy/tdp/138250>

#### QUESTION 18

You must manually upgrade your company's 8-node cluster from ONTAP 9.5 to ONTAP 9.7. Due to the sensitivity of the data that is being stored on the cluster, it is company policy to perform these upgrades one node at a time.

What are two steps that you must perform to accomplish this task? (Choose two.)

- A. Terminate active NFS connections.
- B. Move Epsilon to maintain cluster quorum.
- C. Terminate active SMB connections.
- D. Change disk ownership.

**Correct Answer: B, C**

**Section:**

#### QUESTION 19

To assist with capacity planning, your supervisor wants to receive weekly capacity summary reports using e-mail for all on-premises ONTAP clusters. You are asked to implement a solution that has no additional software licensing costs.

Which action accomplishes this task?

- A. Configure Cloud Insights Premium Edition.
- B. Create a capacity dashboard in Active IQ Digital Advisor.
- C. Configure capacity and utilization reports in Active IQ Unified Manager.
- D. Configure Cloud Insights Basic Edition.

**Correct Answer: C**

**Section:**

**QUESTION 20**

You are asked to enable WORM technology on a large amount of legal data. The legal team asks that a designated user group have the ability to delete files as needed. What would satisfy the legal team's requirements?

- A. SnapLock Enterprise
- B. SnapVault
- C. SnapCenter Plug-in for Microsoft SQL Server
- D. SnapLock Compliance

**Correct Answer: A**

**Section:**

**Explanation:**

Reference: <https://csclub.uwaterloo.ca/~ehashman/netapp/ontap/archive.pdf> (147)

**QUESTION 21**

An ONTAP administrator is trying to configure a three-way-disaster recovery solution. Cluster 2 is within 50 km of Cluster 1, the primary cluster, with an RTT of 7 ms. Cluster 3 is over 300 km from Cluster 1 with an RTT of 29 ms.

In this scenario, what are two topologies that would accomplish this task? (Choose two.)

- A. a cascade topology from Cluster 1 to Cluster 2 with SnapMirror Synchronous, and then SnapMirror asynchronous from Cluster 2 to Cluster 3
- B. a fan out topology with SnapMirror Synchronous from Cluster 1 to Cluster 2 and SnapMirror Synchronous to Cluster 3
- C. a fan out topology with SnapMirror Synchronous from Cluster 1 to Cluster 2 and SnapMirror asynchronous from Cluster 1 to Cluster 3
- D. a cascade topology from Cluster 1 to Cluster 2 with SnapMirror Synchronous, and then SnapMirror Synchronous from Cluster 2 to Cluster 3

**Correct Answer: A, C**

**Section:**

**QUESTION 22**

Your backup cluster reached both the maximum number of parallel replication transfers and the maximum number of FlexVol volumes per node. You need to increase these maximum numbers. In this scenario, which license you would install on the destination to accomplish this task?

- A. SnapRestore License
- B. SnapMirror Sync License
- C. Data Protection Optimized License
- D. SnapVault License

**Correct Answer: B**

**Section:**

**Explanation:**

Reference: <https://library.netapp.com/ecmdocs/ECMP1608428/html/GUID-5C697C7D-FB33-4F4F-8CC4-A8646CD7561B.html>

**QUESTION 23**

A customer wants a new solution that reaches a near-zero recovery time objective (RTO) and a zero recovery point objective (RPO).

In this scenario, which NetApp solution satisfies the requirements?

- A. NDMP

- B. MetroCluster
- C. SnapMirror
- D. SnapVault

**Correct Answer: C**

**Section:**

**Explanation:**

Reference: <https://blog.netapp.com/effective-disaster-recovery-solution>

#### **QUESTION 24**

You want to write custom workflows to perform disaster recovery operations for your environment in OnCommand Workflow Automation. In this scenario, which two scripting languages would be used to accomplish this task? (Choose two.)

- A. Perl
- B. Powershell
- C. PHP
- D. Python

**Correct Answer: A, B**

**Section:**

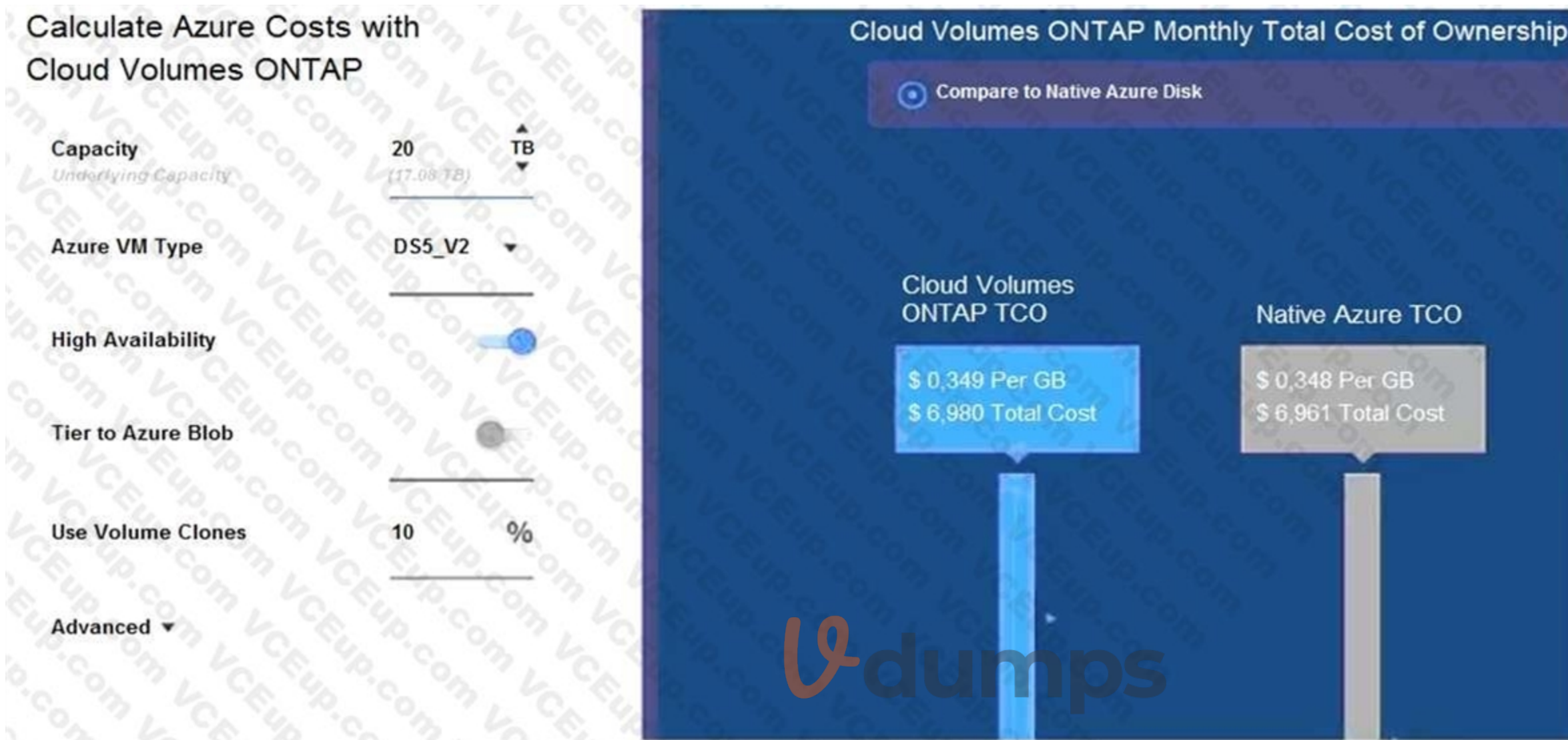
**Explanation:**

Reference: [https://library.netapp.com/ecm/ecm\\_download\\_file/ECMP12470054](https://library.netapp.com/ecm/ecm_download_file/ECMP12470054) (8)

#### **QUESTION 25**

Click the Exhibit button.





Using the NetApp Cloud TCO calculator, a customer wants to determine whether running Cloud Volumes ONTAP in Azure will be more cost effective than running native cloud services. Referring to the exhibit, which action would satisfy the requirement?

- A. Turn off High Availability.
- B. Change the Azure VM Type to DS3\_V2.
- C. Turn on Tier to Azure Blob.
- D. Change the Azure VM Type to DS14\_V2.

**Correct Answer: B**

**Section:**

**Explanation:**

Reference: <https://cloud.netapp.com/azure-calculator>

**QUESTION 26**

Your DevOps team reported that one virtual machine on a VMware datastore has been corrupted due to a ransomware attack. In this scenario, which two methods would solve the issue? (Choose two.)

- A. Restore the Snapshot copy of the volume from ONTAP System Manager.
- B. Restore the VM using SnapCenter Plug-in for VMware vSphere.
- C. Restore the datastore using SnapCenter Plug-in for VMware vSphere.

D. Clone the volume's Snapshot copy prior to the attack, mount, and storage vMotion.

**Correct Answer: C, D**

**Section:**

**QUESTION 27**

You are running a NetApp AFF A220 cluster. Each node has one volume. You create Snapshot copies on both volumes every four hours and keep the copies for 30 days. You are running out of disk space and want to free up space.

In this scenario, what do you do?

- A. Add a disk shelf with NL-SAS HDDs.
- B. Activate aggregate-inline deduplication.
- C. Add a capacity tier and set the tiering policy to snapshot-only.
- D. Activate aggregate-background deduplication.

**Correct Answer: B**

**Section:**

**Explanation:**

Reference: [https://www.state.wv.us/admin/purchase/Bids/FY2020/B\\_0702\\_TAX2000000001\\_03.pdf](https://www.state.wv.us/admin/purchase/Bids/FY2020/B_0702_TAX2000000001_03.pdf)

**QUESTION 28**

Click the Exhibit button.



```

aff::> cluster peer ping
Node: aff-01      Destination Cluster: aff
Destination Node IP Address  Count  TTL RTT(ms) Status
-----
aff-01      10.193.67.58      1  64  0.053 interface_reachable
aff-01      192.168.89.100    1  64  0.061 interface_reachable
aff-02      10.193.67.60      1  64  0.173 interface_reachable
aff-02      192.168.89.101    1  64  0.428 interface_reachable

Node: aff-01      Destination Cluster: ontap9-tme-8040
Destination Node IP Address  Count  TTL RTT(ms) Status
-----
ontap9-tme-8040-01 192.168.90.200    1  63  0.602 interface_reachable
ontap9-tme-8040-02 192.168.90.201    1  63  0.584 interface_reachable

Node: aff-01      Destination Cluster: tme-ontap-prd
Destination Node IP Address  Count  TTL RTT(ms) Status
-----
tme-ontap-prd-01 10.193.67.21      1  64  0.174 interface_reachable
tme-ontap-prd-02 10.193.67.22      1  64  0.17  interface_reachable

Node: aff-02      Destination Cluster: aff
Destination Node IP Address  Count  TTL RTT(ms) Status
-----
aff-01      10.193.67.58      1  64  0.178 interface_reachable
aff-01      192.168.89.100    1  64  0.188 interface_reachable
aff-02      10.193.67.60      1  64  0.054 interface_reachable
aff-02      192.168.89.101    1  64  0.057 interface_reachable

Node: aff-02      Destination Cluster: ontap9-tme-8040
Destination Node IP Address  Count  TTL RTT(ms) Status
-----
ontap9-tme-8040-01 192.168.90.200    1  63  0.569 interface_reachable
ontap9-tme-8040-02 192.168.90.201    1  63  0.627 interface_reachable

Node: aff-02      Destination Cluster: tme-ontap-prd
Destination Node IP Address  Count  TTL RTT(ms) Status
-----
tme-ontap-prd-01 10.193.67.21      1  64  0.179 interface_reachable
tme-ontap-prd-02 10.193.67.22      1  64  0.177 interface_reachable
16 entries were displayed.

```

You are asked to set up a SnapMirror relationship to protect some Oracle DB volumes on both nodes of the aff-01 and aff-02 clusters. You are using the 1 Gb network and the other nodes all have free space to support the mirror.

Referring to the exhibit, which two nodes would provide the least network transfer time for the relationship? (Choose two.)

- A. aff-01 to tme-ontap-prd-01
- B. aff-02 to tme-ontap-prd-02
- C. aff-02 to ontap9-tme-8040-02
- D. aff-02 to ontap9-tme-8040-01

**Correct Answer: B, C**

**Section:**

#### QUESTION 29

A customer has just purchased a new 2-node AFF A220 cluster running ONTAP 9.7 and moved the older 4- node FAS2650 cluster running ONTAP 9.5 to an off-site location. They want to configure replication to the FAS2650 cluster for both disaster recovery and long-term archiving.

In this scenario, how would the customer accomplish this task?

- A. Upgrade the FAS2650 cluster to ONTAP 9.7, then configure SnapMirror with type TDP.
- B. Leave the ONTAP versions, then configure SnapMirror with type XDP.
- C. Downgrade the AFF A220 cluster to ONTAP 9.5, then configure SnapMirror with type XDP.
- D. Leave the ONTAP versions, then configure SnapMirror with type DP.

**Correct Answer: A**

**Section:**

#### QUESTION 30

Your customer wants to implement a solution to protect only a select number of NFSv3 volumes in a particular aggregate that stores their mission-critical application data. The customer wants the volume's data replicated to secondary storage and have application write operations fail if they cannot be replicated. The customer needs to maintain a zero RPO and a very low RTO.

In this scenario, which solution satisfies these requirements?

- A. SnapMirror Synchronous using Sync mode
- B. Mirrored aggregates using SyncMirror
- C. SnapMirror Synchronous using StrictSync mode
- D. Mirrored SVMs using MetroCluster

**Correct Answer: B**

**Section:**

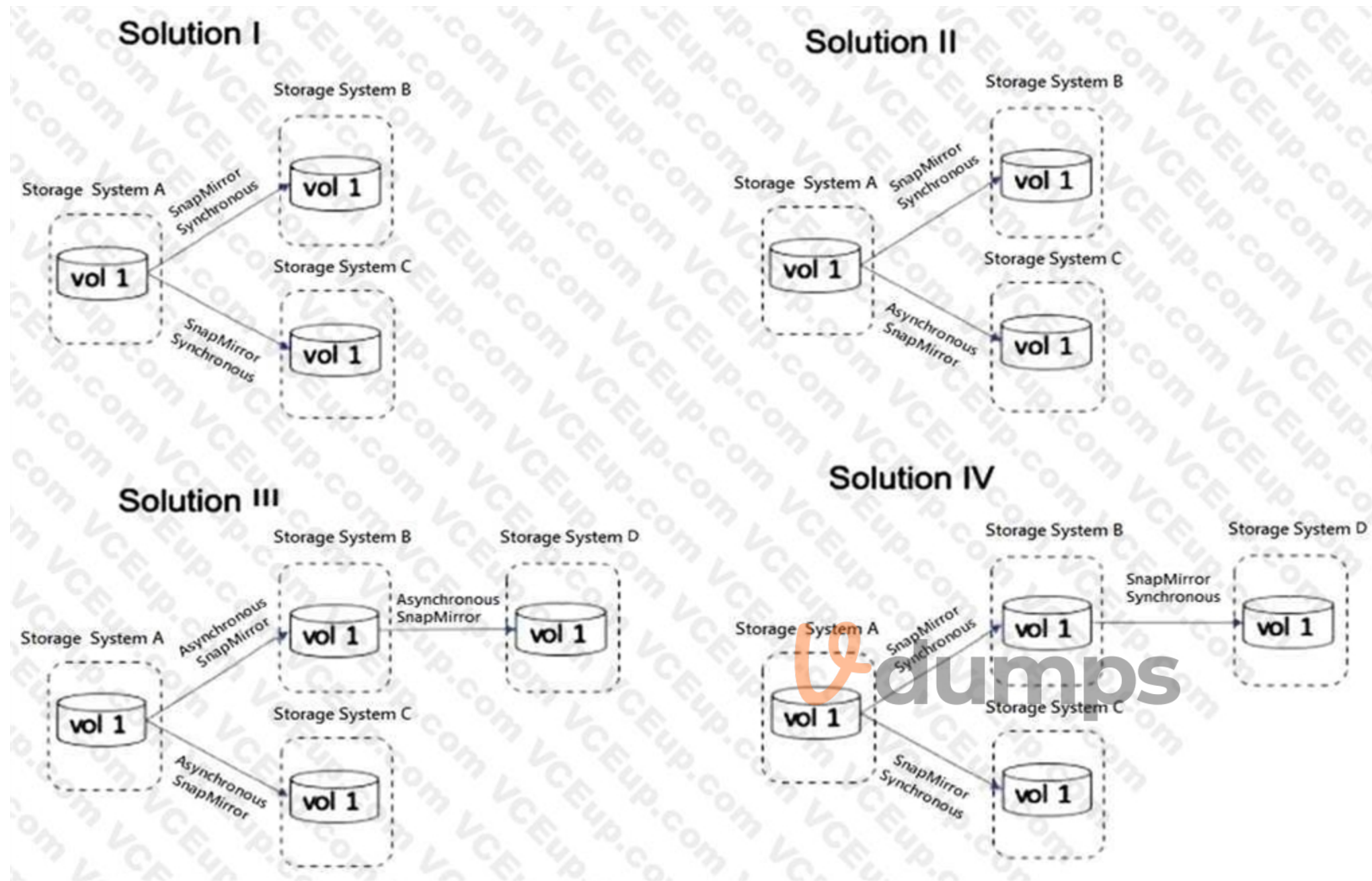
**Explanation:**

Reference: <http://randomventure.blogspot.com/2015/10/netapp-from-ground-up.html>

#### QUESTION 31

Click the Exhibit button.





A customer wants to have a local mirror and a remote mirror of their data. Referring to the exhibit, which two solutions satisfy these requirements? (Choose two.)

- A. Solution I
- B. Solution IV
- C. Solution II
- D. Solution III

**Correct Answer: B, C**

**Section:**

**QUESTION 32**

What are three methods of configuring SnapMirror replication relationships? (Choose three.)

- A. Use Active IQ.
- B. Use the ONTAP command line.

- C. Use OnCommand Insight.
- D. Use ONTAP System Manager.
- E. Use Active IQ Unified Manager.

**Correct Answer: C, D, E**

**Section:**

#### QUESTION 33

You are asked to implement a NetApp solution that has high availability with transparent failover between two data centers. Which two solutions satisfy this requirement? (Choose two.)

- A. ONTAP Select
- B. SnapVault
- C. SnapMirror Sync
- D. MetroCluster

**Correct Answer: B, D**

**Section:**

**Explanation:**

Reference: <https://www.netapp.com/ja/media/13480-tr4705.pdf>

#### QUESTION 34

A customer is running ONTAP 9.7 on a FAS2720 cluster that has 12 x 4 TB NL-SAS drives in the chassis with capacity running low. You decide to use Fabric Pool technology to solve this problem. What does the customer need to do to accomplish this task?

- A. Add an SSD aggregate.
- B. Purchase a Data Protection Optimized (DPO) license.
- C. Use the CLI and add a capacity pool.
- D. Use the wizard and add a capacity pool.

**Correct Answer: A**

**Section:**

**Explanation:**

Reference: <http://docs.netapp.com/ontap-9/index.jsp?topic=%2Fcom.netapp.doc.dot-mgng-stortier-fp%2FGUID-8E421CC9-1DE1-492F-A84C-9EB1B0177807.html>

#### QUESTION 35

You are asked to provision some new storage for VMware. Which two tools are available to perform this task? (Choose two.)

- A. OnCommand Insight
- B. Virtual Storage Console
- C. ONTAP System Manager
- D. SnapCenter Plug-in for VMware vSphere

**Correct Answer: B, C**

**Section:**

**Explanation:**

Reference: [https://docs.netapp.com/us-en/ontap/task\\_san\\_provision\\_vmware.html](https://docs.netapp.com/us-en/ontap/task_san_provision_vmware.html)

**QUESTION 36**

Using ONTAP System Manager, you are asked to replicate all the volumes contained in a Storage VM to a remote ONTAP 9.7 system for quick disaster recovery. Which two steps need to be completed to accomplish this task? (Choose two.)

- A. Create a SnapMirror relationship for each volume.
- B. Create a cluster peering relationship.
- C. Create an SVM-DR relationship.
- D. Create an SVM peering relationship.

**Correct Answer: B, D**

**Section:**

**QUESTION 37**

Click the Exhibit button.

The exhibit shows six configuration panels in ONTAP System Manager:

- Hypervisor (OS):** VMware ESXi 7.0 is selected.
- Hypervisor Management Client (Hos...):** VMware vCenter server 7.0 is selected.
- ONTAP OS (NETAPP OS):** ONTAP 9.6 is selected.
- SnapCenter Host Plugin:** SnapCenter Plug-in 4.3.1 for UNIX is selected.
- SnapCenter Hypervisor Plugin:** SnapCenter Plug-in 4.3 for VMware vSphere is selected.
- SnapCenter Server:** SnapCenter Server 4.1 is selected.

An AFF A700 administrator is told that the VMware environment will be upgraded to vSphere 7 and it will continue to use NFSv3 for their datastores. Referring to the exhibit, which version of SnapCenter Hypervisor Plugin and SnapCenter Server should they use?

- A. SnapCenter Plug-in 4.2.1 and SnapCenter Server 4.2.1
- B. SnapCenter Plug-in 4.3.1 and SnapCenter Server 4.3.1
- C. SnapCenter Plug-in 4.3 and SnapCenter Server 4.1
- D. SnapCenter Plug-in 4.3 and SnapCenter Server 4.3

**Correct Answer: C**

**Section:**

**Explanation:**

Reference: [https://library.netapp.com/ecm/ecm\\_download\\_file/ECMLP2863451](https://library.netapp.com/ecm/ecm_download_file/ECMLP2863451)

**QUESTION 38**

You are asked to perform a NetApp Snapshot copy single-file restore on a corrupted thin-provisioned LUN that is 10 GB in size and is currently at 80% full. How much additional free space do you need in the volume to perform this operation?

- A. 20 GB
- B. 10 GB
- C. 16 GB
- D. 8 GB

**Correct Answer: B**

**Section:**

**QUESTION 39**

You have a SnapMirror relationship established between two sites and want to verify that the data on the DR site is usable without disturbing the source. In this scenario, which three steps are required to accomplish this task? (Choose three.)

- A. Resynchronize the destination to the source volume, then update the source volume.
- B. Resume the SnapMirror destination, then update the SnapMirror destination.
- C. Quiesce the SnapMirror destination, then break the SnapMirror destination.
- D. Reverse the SnapMirror source and destination, then re-initialize SnapMirror.
- E. Configure the destination volume for data access, then access the data volume from a client.

**Correct Answer: A, C, D**

**Section:**

**QUESTION 40**

You are asked to protect your user's HomeDir volume by keeping one weekly Snapshot copy for 52 weeks, one monthly Snapshot copy for six months, and one daily Snapshot copy for 90 days. Which two statements describe how to accomplish this task? (Choose two.)

- A. Create a single job schedule for weekly, monthly, and daily.
- B. Create individual job schedules for weekly, monthly, and daily.
- C. Create a policy to include the new job schedules.
- D. Create a separate policy for weekly, monthly, and daily.

**Correct Answer: A, C**

**Section:**

**QUESTION 41**

A customer has a MetroCluster configuration and wants to automate the disaster recovery process for unplanned automatic switchover. Which NetApp tool would accomplish this task?

- A. ONTAP System Manager
- B. SnapCenter
- C. ONTAP Mediator
- D. Active IQ Unified Manager



**Correct Answer: D**

**Section:**

**QUESTION 42**

You are planning to deploy MetroCluster IP. As part of the implementation strategy, you are asked to verify that you have the relevant hardware for the deployment. Which two elements are required to deploy your solution? (Choose two.)

- A. storage controllers
- B. FC network switches
- C. cluster peering network
- D. iSCSI Ethernet switches

**Correct Answer: C, D**

**Section:**

**QUESTION 43**

A company has a 4-node FAS9000 fabric MetroCluster cluster separated by 101 km. Site A has an unmirrored HDD aggregate. An FC-VI card fails in one of the nodes in site A and a switchover occurs. Which statement is correct in this scenario?

- A. The aggregate is accessible using Site A's surviving node.
- B. Only SSD aggregates are accessible.
- C. The distance is not supported.
- D. The aggregate is accessible using Site B's cluster.

**Correct Answer: D**

**Section:**

**QUESTION 44**

What are two ways to determine if your SnapMirror relationships are up-to-date? (Choose two.)

- A. Use Active IQ and navigate to Cluster -> Volumes -> Protection.
- B. Use Active IQ Unified Manager and navigate to Protection -> Volume Relationships.
- C. Use ONTAP System Manager and navigate to Protection -> Volume Relationships on the destination cluster.
- D. Use ONTAP System Manager and navigate to Protection -> Volume Relationships on the source cluster.

**Correct Answer: A, C**

**Section:**

**QUESTION 45**

Click the Exhibit button.



```

select::> vol show -fields used -volume Engineering,Marketing
vserver volume      used
-----
VS1      Engineering  2.13TB
VS1      Marketing    2.62TB

2      entries were displayed.

```

Your customer is deploying SnapCenter to protect volumes on an ONTAP Select cluster. Referring to the exhibit, which licensing is required to protect the Engineering and Marketing volumes?

- A. a SnapManagerSuite controller-based license
- B. a 3 TB SnapCenter capacity-based license
- C. a 5 TB SnapCenter capacity-based license
- D. a SnapProtectApps controller-based license

**Correct Answer: D**

**Section:**

#### QUESTION 46

A company just installed SnapCenter to help manage their ONTAP 9.7 environment. The database administrator wants to add new volumes with LUNs for a 10 TB Oracle database. Which two tools would accomplish this task? (Choose two.)

- A. SnapCenter Plug-in for Oracle Database
- B. OnCommand Insight
- C. ONTAP System Manager
- D. Active IQ Unified Manager



**Correct Answer: A, B**

**Section:**

**Explanation:**

Reference: [http://197.253.9.244/ontap%209-5/Cluster%20Admin/2\\_Student%20Guide/STRSW-ILTONTAPADM\\_StudentGuide.pdf](http://197.253.9.244/ontap%209-5/Cluster%20Admin/2_Student%20Guide/STRSW-ILTONTAPADM_StudentGuide.pdf)

#### QUESTION 47

During NDMP incremental backups, you want to reduce the time spent finding the changed data between two Snapshot copies. In this scenario, which ONTAP feature will accomplish this task?

- A. compaction
- B. deduplication
- C. SnapDiff
- D. SnapLock

**Correct Answer: C**

**Section:**

**Explanation:**

Reference: <https://www.rubrik.com/en/blog/products-solutions/20/1/nas-backup-rpo-changelistsnapshots>

**QUESTION 48**

You are configuring a SnapMirror replication between a source volume with adaptive compression enabled and a destination volume with secondary compression enabled. In this scenario; which statement is correct?

- A. Blocks are uncompressed at the source and transferred to the destination.
- B. Logical replication with storage efficiency is used.
- C. Storage efficiency (compressed and deduplicated blocks) is preserved during data transfer.
- D. Data is recompressed using the source volume's compression type.

**Correct Answer: C**

**Section:**

**Explanation:**

Reference:

[https://kb.netapp.com/Advice\\_and\\_Troubleshooting/Data\\_Protection\\_and\\_Security/SnapMirror/SnapMirror\\_storage\\_efficiency\\_configurations\\_and\\_behavior](https://kb.netapp.com/Advice_and_Troubleshooting/Data_Protection_and_Security/SnapMirror/SnapMirror_storage_efficiency_configurations_and_behavior)

**QUESTION 49**

A FAS2750 cluster administrator experiences network issues during replication updates that pass over a low- bandwidth WAN link to their DR site. They also replicate locally to another cluster for testing and development. The administrator wants to enable network compression only on the existing WAN Link SnapMirror jobs.

In this scenario, which statement is correct?

- A. Network compression must be enabled when initializing the replica, the current jobs need to be deleted and new ones created.
- B. Network compression is a global option and it cannot be used.
- C. The current DR transfers must be aborted and the option enabled on each job, then resume the transfer.
- D. Network compression is possible but not on a FAS2750.

**Correct Answer: C**

**Section:**

**QUESTION 50**

Which two types of volumes support NDMP backup? (Choose two.)

- A. FlexCache
- B. Flash Pool
- C. FlexVol
- D. FlexGroup

**Correct Answer: C, D**

**Section:**

**QUESTION 51**

When installing a new AFF A700s, you notice that the HA interconnect adapters use miniSAS HD. You subsequently consult Hardware Universe to find out that only 0.5M cables are supported. Due to the importance of the system data fields that use this link, you delay the installation until you can acquire 0.5M cables.

In this scenario, which two system data fields are communicated between HA pairs over the interconnect adapters? (Choose two.)

- A. NVRAM mirroring
- B. heartbeat signal
- C. intercluster peering



D. data LIF location

**Correct Answer: A, C**

**Section:**

**QUESTION 52**

When you configure a SnapLock feature, where should the ComplianceClock be initialized?

- A. on each aggregate that hosts a SnapLock volume
- B. on each SVM that hosts a SnapLock volume
- C. on each node that hosts a SnapLock aggregate
- D. on all the nodes of the cluster

**Correct Answer: C**

**Section:**

**QUESTION 53**

A volume on a FabricPool-enabled aggregate is consuming 10 TB of the performance tier and 90 TB of the cloud tier. A SnapMirror copy needs to be created on a FabricPool-enabled peer cluster at a disaster recovery location. In this scenario, how much data is transferred when the SnapMirror relationship is initialized?

- A. 100 TB
- B. 200 TB
- C. 10 TB
- D. 90 TB

**Correct Answer: A**

**Section:**



**QUESTION 54**

Click the Exhibit button.

SnapShot Name	SnapShot Time	SnapShot Delta
Nightly.0	12:05 am	5 GB
Hourly.0	10:00 pm	10 GB
Hourly.1	6:00 pm	25 GB
Hourly.2	2:00 pm	10 GB
Hourly.3	10:00 am	25 GB
Hourly.4	6:00 am	5 GB

A client has a SnapMirror relationship between two sites that is scheduled to run once a day at 12:15 a.m. They have a network connection between two sites that provides 100 Mbps on bandwidth. By performing the backup at this time, they can maximize their bandwidth use.

Referring to the exhibit, how long does the SnapMirror update take to finish?

- A. one hour
- B. four hours
- C. three hours



D. two hours

**Correct Answer: D**

**Section:**

**QUESTION 55**

A customer has developed a new application that uses Oracle with an AFF system to help track all of their shipping trucks around the world. The customer wants to ensure that application-consistent backups are offloaded to the cloud.

In this scenario, which two solutions enable the customer to satisfy these requirements? (Choose two.)

- A. FabricPool
- B. Flash Pool
- C. SnapCenter
- D. FlexClone

**Correct Answer: A, C**

**Section:**

**QUESTION 56**

A customer has application data corruption on a LUN that is in a volume with six other data LUNs.

The customer needs to restore the corrupted LUN from a Snapshot copy without affecting the other six LUNs.

Which process would accomplish this task?

- A. Use volume SnapRestore.
- B. Use LUN mapping.
- C. Use the volume Snapshot partial-restore file.
- D. Use a single-file restore.



**Correct Answer: D**

**Section:**

**Explanation:**

<https://library.netapp.com/ecmdocs/ECMP1196784/html/GUID-17286F40-08CA-4EB0-8788-3F3F70D185C4.html>

**QUESTION 57**

An administrator wants to use SnapCenter 4.2 to back up and restore both their VMware Horizon environment and Microsoft SQL attached database.

In this scenario, which service account role should be configured to accomplish this task?

- A. sysadmin
- B. operator
- C. backup
- D. administrator

**Correct Answer: A**

**Section:**

**QUESTION 58**

You want to determine the amount of cold data that can be tiered from a FabricPool-enabled aggregate.

In this scenario, which feature satisfies this requirement?

- A. Inactive Data Reporting
- B. Information Lifecycle Management
- C. Object Store Profiler
- D. Auto Balance

**Correct Answer: A**

**Section:**

**Explanation:**

First available in ONTAP 9.4, inactive data reporting (IDR) is an excellent tool for determining the amount of inactive (cold) data that can be tiered from an aggregate. IDR is enabled by default on FabricPool aggregates. More important, you can enable it on non-FabricPool aggregates by using the ONTAP CLI, to get visibility on how much you can gain by deploying FabricPool.

#### QUESTION 59

A customer is using SnapCenter and they want to see details about: 1.) unprotected databases outside of resource groups, 2.) databases that have not been backed up during the report period, 3.) databases that belong to a resource group for which backups have failed, and 4.) the database SnapVault status.

In this scenario, which report type satisfies the requirements?

- A. Backup Report
- B. Clone Report
- C. Plug-in Report
- D. Restore Report

**Correct Answer: C**

**Section:**

#### QUESTION 60

You are monitoring data protection relationships of type XDR using OnCommand System Manager running ONTAP 9.5. In the GUI, you click Protection -> Volume Relationships.

In this scenario, which status in the Relationship State field must be displayed to ensure that the relationships are working as expected?

- A. SnapMirrored
- B. Uninitialized
- C. InSync
- D. Quiesced

**Correct Answer: C**

**Section:**

#### QUESTION 61

A customer wants to set up SNMP to monitor their ONTAP platforms. Because of security reasons, they need strong authentication and data encryption?

In this scenario, which SNMP version satisfies these requirements?

- A. v1
- B. v3
- C. v2
- D. v2c

**Correct Answer: B**



**Section:**

**QUESTION 62**

Your customer needs to activate a destination SVM DR following a disaster. In this situation, which two actions should be performed? (Choose two.)

- A. Shut down the source cluster.
- B. From the destination cluster, break the SVM DR relationship.
- C. From the source cluster, break the SVM DR relationship.
- D. Start the destination SVM.

**Correct Answer: A, D**

**Section:**

**QUESTION 63**

You are asked to implement a DR solution to protect employee home directories on the primary cluster. The solution should provide an RPO of one hour, disaster recovery and archiving configured on the same destination volume of the DR cluster. Your solution should also reduce the amount of secondary storage requirements and use lower network traffic on the WAN links. In this scenario, which NetApp replication technology satisfies these requirements?

- A. SnapMirror-Sync
- B. SyncMirror
- C. MetroCluster
- D. SnapMirror

**Correct Answer: D**

**Section:**

**QUESTION 64**

A client has two regional offices that use SnapMirror cross-site replication to host disaster-recovery mirrors for both offices. A co-worker at one office is requesting read/write access to one of the volume mirrors. You must accomplish this task without interrupting data access or replication.

In this scenario, how should you proceed?

- A. Create a FlexVol volume on the destination cluster so that it is writeable for the co-worker.
- B. Create a FlexClone volume based on one of the Snapshot copies at the destination so that it is writeable for the co-worker.
- C. Break the SnapMirror relationship between the local and remote clusters, and make the destination volume writeable for the co-worker.
- D. Modify the export policy on the destination mirror volume so that it is now writeable for the coworker.

**Correct Answer: B**

**Section:**

**QUESTION 65**

Data on an AFF system is replicated using SnapMirror to a FAS system that is configured with NL-SASbased storage.

In this scenario, which storage efficiency is lost on the SnapMirror destination?

- A. compaction
- B. compression
- C. aggregate-level deduplication



D. volume-level deduplication

**Correct Answer: B**

**Section:**

**QUESTION 66**

Click the Exhibit button.



Your customer has recently implemented a FabricPool solution that uses the default configuration. They notice that no data has moved to the cloud tier. Your customer is concerned that FabricPool might not be functioning properly. Referring to the exhibit, what is causing the problem?

- A. The performance tier is not 50% full.
- B. The performance tier is not 90% full.
- C. The performance tier is not 75% full.
- D. The performance tier is not 100% full.

**Correct Answer: A**

**Section:**

**QUESTION 67**

You recently set up a SnapMirror relationship with a daily update schedule. You want to verify that the updates are being performed daily. Which two actions inside OnCommand System Manager would you ensure that the SnapMirror transfers are occurring daily? (Choose two.)

- A. In the Jobs window, verify that all manual Snapshot copy operations have completed in the past 24 hours.
- B. In the Jobs window, verify that all SnapMirror jobs have completed within the past 24 hours.
- C. In the Relationships window, verify that the relationship state was broken in the past 24 hours.
- D. In the Relationships window, verify that the lag time is less than 24 hours.

**Correct Answer: B, D**

**Section:**

**QUESTION 68**

Which two NetApp technologies allow for synchronous replication of data between two remote sites? (Choose two.)

- A. SyncMirror
- B. SnapVault
- C. Metro Cluster
- D. SnapMirror

**Correct Answer: B, D**

**Section:**

**QUESTION 69**

A customer is running multiple Oracle DBs over NFS. The volumes are replicated using SnapMirror to a secondary site, which also hosts the development and test systems. They want to streamline the creation of test environments on the secondary site so that they will not have to manually use FlexClone to clone multiple volumes for each request.

In this scenario, which tool satisfies these requirements?

- A. Snap Creator Framework
- B. OnCommand Unified Manager
- C. NetApp Service Level Manager
- D. OnCommand Workflow Automation

**Correct Answer: A**

**Section:**

**QUESTION 70**

You want to set up an important management solution that must comply with FIPS 140-2. The solution should support a multi-clusters environment and should provide centralized management of the encryption keys. In this scenario, which solution accomplishes the task?

- A. NetApp Storage Encryption (NSE) with external key management using the Key Management Interoperability Protocol (KMIP)
- B. NetApp Volume Encryption (NVE) with onboard key manager using the Key Management Interoperability Protocol (KMIP)
- C. NetApp Storage Encryption (NSE) with onboard key manager using the Key Management Interoperability Protocol (KMIP)
- D. NetApp Volume Encryption (NVE) with external key management server using the Key Management Interoperability Protocol (KMIP)

**Correct Answer: D**

**Section:**

**QUESTION 71**

You have two ONTAP clusters, cluster1 and cluster2. Cluster1 has an SVM serving SMB3 data and you want to protect it by replicating it to cluster2 using SVM DR. The source and destination subnets are identical. You want to retain the CIFS server security of the SVM at the destination site.

In this scenario, which three steps would you take to configure the SVM DR relationship? (Choose three.)

- A. Configure the network for data access on the destination SVM.
- B. Create the SnapMirror relationship with the id-preserve option set to true.
- C. Create the destination SVM with the dp-destination subtype.
- D. Create a CIFS server on the destination SVM.
- E. Initialize the SnapMirror relationship.



**Correct Answer: A, B, D**

**Section:**

**QUESTION 72**

You are given the vsadmin account credentials for an SVM that is delegated to you by your organization's shared services group. You are asked to verify that all of the volumes in your SVM are protected with SnapMirror. In this scenario, what would you use to accomplish this task?

- A. OnCommand System Manager
- B. OnCommand Unified Manager
- C. XCP
- D. CLI

**Correct Answer: D**

**Section:**

**QUESTION 73**

You have an environment with multiple database servers that are performing scheduled nightly dumps. These dumps vary in both the time to complete and the size of data produced. You need to ensure that there is always enough room in the volume for the data and that a nightly SnapMirror update does not take place until the database dump process is complete.

In this scenario, which NetApp tool ensures that this process is completed every night?

- A. OnCommand Unified Manager
- B. OnCommand Insight
- C. OnCommand Workflow Automation
- D. OnCommand System Manager

**Correct Answer: D**

**Section:**

**QUESTION 74**

You are upgrading your Data ONTAP cluster from clustered Data ONTAP 8.3 to clustered Data ONTAP 9.1. Which two actions must be performed for the SnapMirror relationships? (Choose two.)

- A. Break existing SnapMirror relationships.
- B. Delete the obsolete SnapMirror Snapshot copies which were created in Data ONTAP 8.3.
- C. After the upgrade, resynchronize, and resume SnapMirror relationships.
- D. Delete and re-create SnapMirror relationships.

**Correct Answer: A, C**

**Section:**

**QUESTION 75**

You have multiple load-sharing destinations for a volume in a storage virtual machine. The source volume has become unavailable and you want to make one of the destination volumes the new source. What happens to the original source volume?

- A. The promote operation deletes the original source volume.
- B. The promote operation takes the original source volume offline.
- C. The initialize operation deletes the original source volume.



D. The original source volume goes offline.

**Correct Answer: A**

**Section:**

**Explanation:**

([https://library.netapp.com/ecm/ecm\\_download\\_file/ECMP1653502](https://library.netapp.com/ecm/ecm_download_file/ECMP1653502))

#### QUESTION 76

A volume has been filled completely by active data and Snapshot copies.  
What must you do to make the volume writable again?

- A. Delete files in the active file system.
- B. Delete any SnapMirror relationships.
- C. Delete enough Snapshot copies until space is available.
- D. Modify the Snapshot reserve.

**Correct Answer: C**

**Section:**

**Explanation:**

(<https://library.netapp.com/ecmdocs/ECMP1217273/html/GUID-866A2386-BE9D-474E-99A9-7A16143DBF74.html>)

#### QUESTION 77

For DR purposes, data must be replicated between on-premises clusters and multiple public clouds.  
In this scenario, which solution would simplify management?

- A. Cloud Volumes ONTAP
- B. Cloud Manager
- C. Cloud Sync
- D. Cloud Insights

**Correct Answer: B**

**Section:**

#### QUESTION 78

You configured a SnapMirror relationship with a default policy for the daily mirroring of a volume which contains financial data. Although the data is critical, it only changes on a monthly basis.  
Using OnCommand System Manager, which two actions would change the frequency of the SnapMirror updates? (Choose two.)

- A. Select or create a different schedule.
- B. Edit the parameters of the default schedule.
- C. Select or create a different policy.
- D. Edit the parameters of the default policy.

**Correct Answer: C, D**

**Section:**

**Explanation:**

(<https://library.netapp.com/ecmdocs/ECMP1610202/html/snapmirror/policy/create.html>)

#### QUESTION 79



Which two NetApp products reduce the backup time and create a consistent backup for a primary Oracle target?  
(Choose two.)

- A. SnapMirror for Open Systems
- B. Open Systems SnapVault
- C. SnapManager for Oracle
- D. SnapProtect

**Correct Answer: C, D**

**Section:**

#### QUESTION 80

You do not want to impact your ongoing SnapMirror relationship between your primary and secondary site. Which step must be taken prior to creating a FlexClone at the disaster recovery site?

- A. Cascade the SnapMirror destination volume to another SnapMirror destination.
- B. Create a Snapshot copy of the SnapMirror destination volume.
- C. Cascade the SnapMirror destination volume to another SnapVault destination.
- D. Create a Snapshot copy of the SnapMirror source volume and wait for it to transfer.

**Correct Answer: D**

**Section:**

#### QUESTION 81

You want to conserve disk space in your SnapVault destinations. You enable storage efficiency on each of the secondary volumes.  
Which two statements are true in this scenario? (Choose two.)

- A. Storage efficiency can be enabled on the secondary volume and SnapVault will manage the schedule.
- B. Storage efficiency can be enabled on the secondary volume, but a manual schedule will need to be assigned.
- C. If storage efficiency is enabled on the primary volume, it will be preserved on the secondary volume.
- D. SnapVault implicitly uses storage efficiency.

**Correct Answer: A, C**

**Section:**

**Explanation:**

(<https://library.netapp.com/ecmdocs/ECMP1196819/html/GUID-33E5E672-6719-4C76-97F7-F1D1CF7C8185.html>)

#### QUESTION 82

You want to set up protection relationships at the time of provisioning one or more primary volumes in the source cluster in ONTAP. Which NetApp management tool enables you to accomplish this task?

- A. SnapCenter
- B. OnCommand System Manager
- C. ONTAPCLI
- D. OnCommand Unified Manager

**Correct Answer: B**

**Section:**



**QUESTION 83**

Your customer wants to ensure that the SnapMirror relationships are easily managed in a bidirectional, multi-cluster environment. Which version of clustered Data ONTAP would you recommend?

- A. clustered Data ONTAP 9.1
- B. clustered Data ONTAP 8.2.3
- C. clustered Data ONTAP 8.3
- D. clustered Data ONTAP 8.1.4

**Correct Answer: A**

**Section:**

