

Nutanix.NCP-DS.by.David.54q

Number: NCP-DS
Passing Score: 800
Time Limit: 120
File Version: 5.0

Exam Code: NCP-DS



Exam A

QUESTION 1

An administrator has a new requirement to separate management and block storage network traffic for bare-metal workloads. What should the administrator do to satisfy this requirement?

- A. Add a second virtual NIC to CVMs, configure them in prism.
- B. Configure Backplane LAN to isolate hypervisor traffic
- C. Configure Management LAN to segment internal communication.
- D. Enable Volumes network segmentation

Correct Answer: C

Section:

QUESTION 2

An administrator has received the following alert:

File Server In Heterogeneous State

What is the reason for this alert?

- A. The FSVMs do not match in their CPU or memory configuration.
- B. The FSVMs are not distributed properly on the hosts in the cluster
- C. Performance of the File Server is optimal and the alert can be ignored
- D. The hosts where the FSVMs run do not match in their CPU or memory configuration.

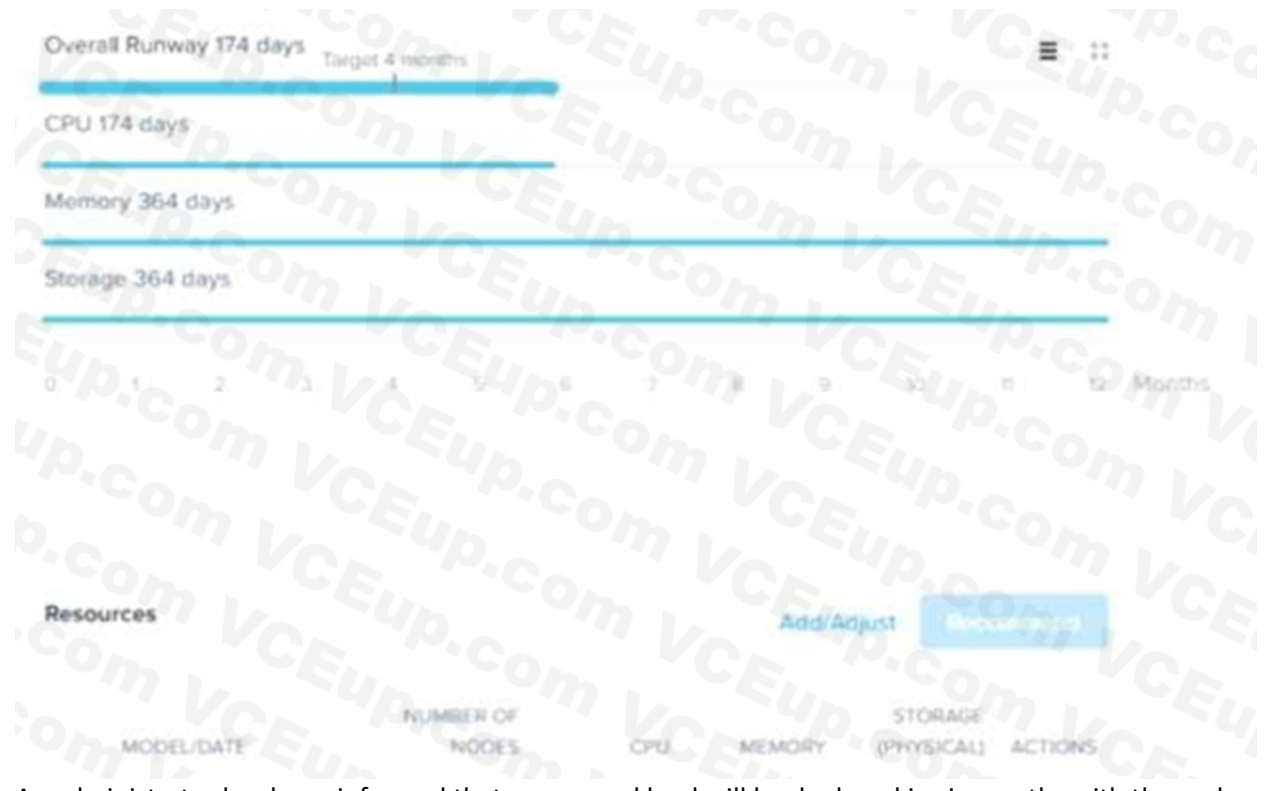
Correct Answer: B

Section:

QUESTION 3

Refer to the exhibit.





An administrator has been informed that a new workload will be deployed in six months with these characteristics.

- CPU: 210 GHz
- Memory: 600 GiB
- Storage: 11.72 TiB

Upon receiving the new project notification, the administrator creates a scenario to determine whether or not the Nutanix cluster has enough space capacity to properly handle the new workload.

Why is the Overall Cluster runway showing that cluster resources are not exhausted (red color)?



- A. Target analysis timeframe starts after additional resources are added.
- B. There are enough available resources to support the new workload.
- C. Additional resources will be added before the new workload is added
- D. Target analysis timeframe ends before the new workload is added.

Correct Answer: D

Section:

Explanation:

https://support-portal.nutanix.com/page/documents/details?targetId=Prism-CentralGuide-Prismv5_19:mul-resource-planning-runway-view-pc-r.html

QUESTION 4

Which two configuration elements can an administrator find in the File Server -> FILE SERVER DETAILS tab? (choose two.)

- A. Share/Export Count.
- B. Total Number of Files.
- C. DNS Domain Name.
- D. Quarantined Files.

Correct Answer: A, C

Section:

QUESTION 5

Which feature ensures that a host failure's impact on a Files cluster will be minimal?

- A. VM-VM affinity rules
- B. VM-Host affinity rules
- C. VM-VM anti-affinity rules
- D. VM-Host anti-affinity rules

Correct Answer: B

Section:

QUESTION 6

Where can an administrator find the latency associated with a Files SMB Share?

- A. FSVM performance
- B. File Analytics Health
- C. `ncli > fs get-file-servers-usage`
- D. File Server Performance Tab

Correct Answer: D

Section:

QUESTION 7

What is the most likely cause of an Objects bucket that is shared with multiple users to approach its assigned capacity limit?

- A. Objects store capacity includes snapshots.
- B. Some multi-part operations are pending.
- C. Malware infections is causing the usage.
- D. Other users have written to the bucket.

Correct Answer: D

Section:

QUESTION 8

An administrator is tasked with creating an Objects store with the following settings ?

- Medium performance (around 10,000 requests per second)
- 10 TiB capacity
- Versioning disabled
- Hosted on an AHV cluster

Immediately after creation, the administrator is asked to change the name of Objects store.

How will the administrator achieve this request?

- A. Enable versioning and then rename the Objects store, disable versioning.
- B. Delete and recreate a new Objects store with the updated name.
- C. The Objects store can only be renamed if hosted on ESXi.
- D. Update the name of the Objects store by using a CORS XML file.

Correct Answer: B



Section:

QUESTION 9

An administrator wants to centralize the storage of CCTV data from all its branches in a remote datacenter. To meet compliance standards, the requirements for this solution are as follows:

- Data must be kept for a minimum of 10 years
- Data must be accessible for use at any time
- Data must be secure

How should the administrator satisfy these requirements?

- A. Create a Volume Group and mount to a server
 - 2) Configure a LifeCycle policy for a 10year retention
 - 3) Enable encryption on the vDisks
- B.
 - 1) Create an Objects bucket
 - 2) Configure WORM for a 10year retention
 - 3) Replace Objects's self-signed certificate with a CA-signed certificate
- C.
 - 1) Create a Storage Container
 - 2) Configure WORM for a 10year retention3) Replace Prism Element's self-signed certificate with a CA-signed certificate
- D. Create a Files share
 - 2) Configure a Lifecycle policy for a 10 year retention
 - 3) Enable encryption on SMB protocol

Correct Answer: A

Section:

QUESTION 10

What are the three main metrics monitored for each Files instance and per share?

- A. Concurrent Connections, Throughput and OP sizes
- B. Access time, IOPS and Throughput
- C. Bandwidth, Speed and IOPS
- D. Latency, Throughput and IOPS

Correct Answer: C

Section:

QUESTION 11

The Compliance department would like the administrator to have the ability to revert documents to previous versions. How should the administrator facilitate this request?

- A. Configure protection snapshots on the File Server
- B. Enable Self-Service Restore on the Share/Export
- C. Configure Protection snapshots on the Share/Export
- D. Enable Self-Service Restore on the File Server

Correct Answer: A

Section:



QUESTION 12

An administrator is determining the most recent operation a user performed on the share cifs1 within the last 24 hours? How should the administrator complete this task in File Analytics?

- A. In the Anomalies section, view the anomaly rule created for the user with an interval of 24 hours.
- B. In the Audit Trails section, search for the cifs1 share and view the actions on the share over the past 24hour range
- C. In the Audit Trails section, search for the user and view their last operations.
- D. In the Anomalies section, select Users exceed an operation count threshold an input the 24hour range for share cifs1

Correct Answer: D

Section:

QUESTION 13

An administrator is upgrading Files. When running the pre upgrade check, the following message is generated:

FileServer in HA state

Which two steps should the administrator take to resolve this error message? (Choose two.)

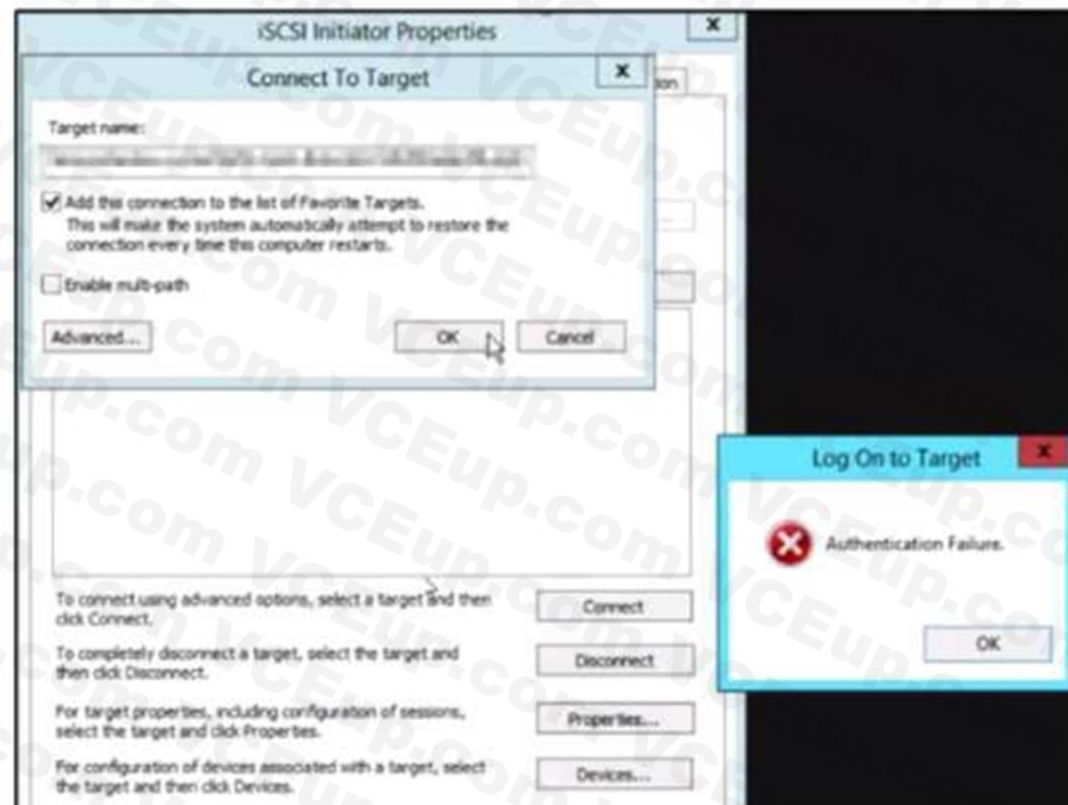
- A. Check if Stargate services are running.
- B. Check for alerts for NVB being down.
- C. Check if Zookeeper services are running
- D. Verify FSVM is booted and not stuck

Correct Answer: B, D

Section:

QUESTION 14

Refer to the exhibit.



An administrator reports that a Volume Group (VG) is no longer accessible on their server. Upon attempting to reconnect, an error is displayed, as shown in the exhibit.

Which condition would cause this error?

- A. The client is trying to access the wrong target.
- B. MPIIO is enabled for the volume group
- C. Encryption is enabled for the container hosting the VG.
- D. The wrong CHAP secret has been configured.

Correct Answer: A

Section:

QUESTION 15

Which two statements are true about object counts in an object store?

- A. Upload counts are included in the object counts
- B. Each upload of a multipart upload is counted as a separate object until the object is finalized.
- C. Each upload of a multipart upload is counted as a separate object
- D. Upload Counts are not included in the object counts

Correct Answer: C, D

Section:

QUESTION 16

A company has two Files clusters for their workloads. One cluster is running VDI workloads and another one is running Big Data (large file ingestion) workloads. The administrator is planning to optimize the workload performance on the cluster where the VDI workloads are running.

The administrator needs to complete these requirements

- Determine the current workload type on the cluster.
- Optimize the file share for operations such as small overwrites into larger files Which two actions should the administrator take to satisfy this requirement? (choose two)

- A. Set the share workload type to sequential
- B. Execute command `afs share.edit share-name share_workload_type=default`
- C. Set the share workload type to random
- D. Execute command `afs share.io_size_distribution`

Correct Answer: A, D

Section:

QUESTION 17

An administrator needs to configure a Nutanix cluster to support a clustered application running on two bare-metal servers. This application required shared storage with block-level locking for use with its native failover mechanism.

Which option satisfies these requirements?

- A. An SMB standard share with ABE enabled
- B. A volumes instance with external Client Access
- C. An RF2 storage container with file system whitelist
- D. An NFS distributed share and enable Blocked File Types

Correct Answer: B

Section:

QUESTION 18

An administrator needs to deploy a new Linux log collector package which creates a directory for each monitored item. The logs would be analyzed by a Windows application. Which action should the administrator take that will provide the best performance and simplicity?

- A. Create an Objects bucket with versioning enabled.
- B. Create a Files distributed share with multi-protocol access.
- C. Assign a Volume vDisk to the Linux Collector VM.
- D. Configure File Analytics to analyze the collected logs.

Correct Answer: C

Section:

QUESTION 19

A company decided to switch their existing windows file server to a new Files instance. After successfully deploying Files, an administrator now needs to plan to reduce the impact of any potential outage. As the source file server resides across the WAN from the destination file server over an unreliable network connection.

The administrator needs to ensure there is minimal impact to data already copied, should a network outage occur. How should the administrator meet this requirement?

- A. Use rsync in incremental Copy mode.
- B. Check where the data copy failed and restart from that location
- C. Use a method allowing files to be copied in restartable mode.
- D. Use Microsoft DFS-R to replicate the files.

Correct Answer: A

Section:



QUESTION 20

Users from the brazil HQ office are complaining that they are not able to save data stored on the company's Files solution. The save process often fails and they are unable to work. While troubleshooting, the storage administrator observes that the share auth process times out. Files is connected to a domain controller located in the UK.

What should the administrator do to solve the problem?

- A. Check the Active Directory Domain Trust settings
- B. Leave the UK Domain and join the Brazil domain
- C. Use afs commands on an FSVM to set the local DC as preferred
- D. Ask the affected users to install the latest security patches and reboot.

Correct Answer: D

Section:

QUESTION 21

An administrator of an existing Nutanix cluster running Kubernetes with multiple PODs notices that NCC checks report that some volume groups experience the following error:

Node x.x.x.x:
FAIL: Volume Group pvc-XXXXXX-XXXX-XXXX-XXXX-XXXXXXXXXXXX space usage (90%) The administrator checks the volume group usage from the Kubernetes pod and get different usage results. The current stats are 55% used space.

The results of the NCC check do not match what manually-executed checks report.

What is the cause of this behavior ?

- A. The garbage collection process has yet to run.
- B. The NCC checks need to be updated to the latest version.
- C. Volumes has not received the needed UNMAP commands.
- D. Kubernetes is not correctly reporting its storage usage.

Correct Answer: B

Section:

QUESTION 22

Which two network requirements must an administrator take into consideration when configuring and defining client and storage networks? (Choose two.)

- A. Ensure there is one IP address available for the storage network
- B. Ensure there is one IP address available for client network
- C. The Client and storage networks must have separate subnets.
- D. Ensure the client and storage networks use a tagged VLAN

Correct Answer: B, D

Section:

QUESTION 23

A company uses a Nutanix 3-node cluster environment. In Prism Pro, the Capacity Runway shows these capacity values:Max Capacity 6 TiB Effective Capacity 4 TiB The company wants to upgrade the environment to use an RF3 container and also requires all cluster nodes to be the same model.

What must the effective capacity of the Nutanix cluster be to support the new RF3 container?

- A. 6 TiB
- B. 9 TiB
- C. 4 TiB
- D. 10 TiB

Correct Answer: A

Section:

QUESTION 24

An administrator is implementing a storage solution with these requirements:

- Is easily searchable
 - Natively supports disaster recovery
 - Access to each item needs to be fast
 - Can scale to petabytes of data
 - Users are granted access after authentication
 - User data is isolated, but could be shared
- How should the administrator satisfy these requirements?

- A. Configure Calm with an application per user
- B. Deploy Objects with AD integration
- C. Implement Volumes with CHAP
- D. Use Files distributed share with ABE

Correct Answer: C

Section:



QUESTION 25

An administrator is building a new application server and has decided to use post-process compression for the file server and inline compression for the database components. The current environment has these characteristics:

• Two Volume Groups named VG1 and VG2. • A Storage Container named SC1 with inlinecompression. • A Storage Container named SC2 with post-process compression.

Which action should the administrator take to most efficiently satisfy this requirement?

- A. Within SC1. create one vDisk in VG1 and one vDisk in VG2.
- B. Within VG1, create one vDisk in SC1 and within VG2. create one Disk in SC2.
- C. Within VG1, create one Disk in SC1 and one Disk in SC2
- D. Within SC1, create one Disk in VG1 and within SC2. create one Disk in VG2

Correct Answer: B

Section:

QUESTION 26

An administrator is notified by a user about a problem regarding a file within a Files share.

The file AIC.docx is being periodically deleted by another user. The administrator is asked to collect information about who is deleting this file.

How should the administrator collect the required information in File Analytics

- A. Use File Operations on the dashboard for the docx
- B. Use Audit Trails and search for file Anc.doex
- C. Configure Alert Notification for file and does
- D. Configure Anomaly Rules for file ARC, docx

Correct Answer: D

Section:

**QUESTION 27**

An administrator is managing a 4-node Nutanix cluster and will use Capacity Runway to provide resource consumption trend analysis to management. The administrator wants to have Capacity Runway consider two node failures in its calculations. What should the administrator do to accomplish this task?

- A. Create a RF3 storage container
- B. Reserve capacity for failure
- C. Create a new scenario increasing current workload by 20%
- D. Add another node to the default scenario

Correct Answer: A, C

Section:

QUESTION 28

An administrator has been informed of a new project, which requires expanding the capacity of the project team's Volume Group without disrupting availability or affecting performance. Which steps should the administrator take to achieve this?

- A. Clone the existing Volume Group to a larger instance and switch to the new Volume Group
- B. Add new dishes to the Volume Group and wait for the Volume Group to auto-resize
- C. Create a new larger Volume Group and migrate the files
- D. Add new data to the Volume Group and expand the Volume Group online

Correct Answer: B

Section:

QUESTION 29

Email distribution lists in the company have been redesigned and IT now has a new distribution list dedicated for all alerts In File Analytics how should an administrator change the recipient list to receive email alerts?

- A. Click on the gear icon select Define Anomaly Rules and update the field Anomaly Email Recipients
- B. Click on the gear icon, select SMTP configuration and update the field Recipient List
- C. Select User menu in the top right corner and click on Collect Logs
- D. Click on the gear icon select Update AD/LDAP configuration and update the field Username

Correct Answer: B

Section:

QUESTION 30

An administrator has selected Files for the file server implementation in the company. The following key requirements for the environment have been specified:

- All files written on the shares need to be scanned for viruses
- Certain file types must never be created or copied to any of the shares
- End users must be able to restore previous file versions or deleted files on their own
- Each user should not be able to write more than 100 GB of data on any share Which configuration will meet the above requirements?

- A. File Blocking and ICAP on the shares, and Quota policies. ABE and ICAP integration on the Files cluster
- B. File Blocking and Quota policies on the Files cluster, and SSR and ICAP integration on the shares
- C. File Blocking and Quota policies on the Files cluster, and ABE and ICAP integration on the shares
- D. File Blocking and ICAP on the Files cluster, and Quota policies SSR and ICAP integration on the shares

Correct Answer: D

Section:

QUESTION 31

An administrator has received multiple trouble tickets from users who are unable to access a particular Distributed share.

While troubleshooting the administrator observes that data located on FSVM 3 can be accessed but the data located on FSVMs 1 and 2 is inaccessible. The administrator receives this message when attempting to access data on FSVMs 1 and 2 Network object not found Both FSVM 1 and 2 nodes successfully reply to pings and the administrator is able to access data via the node IP What must the administrator check as a next step?

- A. Check if user permissions are configured correctly
- B. Check if Kerberos_time_skew is logged on the client
- C. Check if SMB1 is enabled on FSVM node 1 and 2
- D. Check if all DNS records are created on the DNS server.

Correct Answer: C

Section:

QUESTION 32

Due to a new IP addressing plan for the Desktops network, an administrator needs to change the Files client-side network Which action should the administrator perform first?

- A. Power off the FSVMs
- B. Stop the Files service

- C. Create a new managed virtual network
- D. Remove existing DNS entries

Correct Answer: B

Section:

QUESTION 33

An administrator receive a warning message concerning file server hosted in a 3 node cluster The Prism management console recommends optimizing Files resources How should the administrator resolve this issue

- A. Scale out by adding a new FSVM in the duster
- B. Apply the recommendation to rebalance
- C. Scale up the FSVMs resources
- D. Increase the CVM: CPU and RAM

Correct Answer: A

Section:

QUESTION 34

The administrator is migrating users' home directories from a legacy SAN to Files. The administrator wants to make sure that the users can only access their home directory, and that when a new employee logs in for the first time, a home directory is automatically created.

What should the administrator do to satisfy these requirements?

- A. Create a Standard SMB share and edit folder permissions using the MMC plugin.
- B. Create a Standard NFS share and set the default access to Read-only.
- C. Create a Distributed NFS share and set the default access to No Access
- D. Create a Distributed SMB share and edit folder permissions using the MMC plugin.



Correct Answer: B

Section:

QUESTION 35

An administrator needs to create a new Volume Group named vg101 to share storage to four client initiators using the CLI command: `vg.create vg101 shared=true` After creating the Volume Group, the administrator needs to add disks to the new Volume Group and attach the Initiator IQNs for each host Which next two commands must the administrator run to complete this task? (Choose two.)

- A. `vg.attach_external va name initiator name= <initiator iqn>`
- B. `vg.disk create vg201 container=container name create size=disk size`
- C. `vg. attach_external vg101. attach external initiator name <initiator iqn>`
- D. `vg.disk create vgl01 create size-disk size container container name index= <index_num`

Correct Answer: A, B

Section:

QUESTION 36

An administrator is using Objects for the company's DevOps department.

The administrator must ensure that the data meets regulatory compliance requirements for many critical sectors and still gives users the option to recover from accidental overwrite or unwanted modification of an object.

Which two components should the administrator enable to complete this task? (Choose two.)

- A. Windows Previous Versions (WPS)
- B. Self Service Restore (SSR)
- C. Object versioning
- D. Write-Once-Read-Many (WORM)

Correct Answer: C

Section:

QUESTION 37

An administrator needs to deploy Files Analytics (FA). After logging into the Prism management console using personal credentials, the administrator is not able to deploy the Virtual Appliance. What action is needed to resolve this issue?

- A. Move FA to another storage container.
- B. Download the FA Virtual Appliance.
- C. Perform FA deployment in Prism Central
- D. Deploy FA using the admin user account

Correct Answer: A

Section:

QUESTION 38

An administrator has deployed a new Files cluster within a Windows environment.

After some days, the Files environment is not able to synchronize users with the Active Directory server anymore. The administrator observes a large time difference between the Files environment and the Active Directory server that is responsible for the behavior. How should the administrator prevent the Files environment and the AD Server from having such a time difference in future?

- A. Use Opoolntp.org as the NTP Server for the AD Server
- B. Use the same NTP Servers for the Files environment and the AD Server
- C. Connect to every FSVM and edit the time manually
- D. Use 0.pool.ntp.org as the NTP Server for the Files environment

Correct Answer: B

Section:

QUESTION 39

A company is using a vSphere-based 5-node Nutanix cluster. Currently, the cluster is using three full HCI nodes and two storage-only nodes. VMs are configured with Volumes with multiple vDisks. Which statement about Volumes Load Balancing is correct?

- A. Disks can be redirected to all CVMs within the cluster
- B. vDisks are managed by the CVM, which hosts the VM
- C. vDisks are managed by the two storage-only nodes
- D. vDisks can be redirected only to the three full HD nodes

Correct Answer: A

Section:

QUESTION 40

An administrator needs to ensure maximum performance, throughput and redundancy for the company's Oracle RAC implementation, while using the native method for securing workloads.

Which configuration meets these requirements?

- A. Files with a general purpose share and File Blocking
- B. Volumes with CHAP and multiple Disks
- C. Volumes with MPIO and a single vDisk
- D. Files with a distributed share and ABE

Correct Answer: C

Section:

QUESTION 41

An administrator needs to configure VMs in an in-guest cluster running on a vSphere environment. This configuration is for a critical database workload in a demilitarized zone.

The company's Risk Management department requires that data traffic not be exposed to other types of traffic. What should the administrator do to comply with the Risk Management department's requirements?

- A. Mount shared Disks within the VMs as an RDM.
- B. Enable NAT for Data Services IP Address.
- C. Control iSCSI access through the firewall.
- D. Enable iSCSI Network Segmentation

Correct Answer: B

Section:

QUESTION 42

The Files administrator has received reports from users in the accounting department that they can see folders that they don't have permission to access. The accounting department manager has requested that employees should only be able to see folders that they have permission to access How would a Files administrator ensure that users in the Accounting share can only see folders they have permission to access?

- A. Remove File Blocking on the accounting shares
- B. Remove read-only access to shares users should not access
- C. Enable Access-Based Enumeration on the accounting share
- D. Enable Access-Based Enumeration on the File Server

Correct Answer: D

Section:

QUESTION 43

What happens to an FSVM during a node failure in a 3-node cluster?

- A. Due to host affinity rules, the FSVM will not restart
- B. The FSVM will automatically restart on one of the remaining nodes.
- C. The FSVM must be manually restarted on one of the remaining nodes.
- D. A new FSVM must be deployed to the cluster.

Correct Answer: B

Section:

QUESTION 44

An administrator has mapped a Volume Group named VG1 to a VM. Due to changes in the application running inside the VM, two additional volumes are required. At the time of creation, the VM was assigned to a Protection

Domain named PD1.

Which two steps should the administrator take to add the additional volumes to the VM while maintaining data protection? (Choose two)

- A. Add two additional Disks to VG1
- B. Add the new vDisks to the same Consistency Group
- C. Manually update PD1 to include the newly created Disks
- D. Map the new vDisks as volumes to the VM

Correct Answer: A, C

Section:

QUESTION 45

A company's IT security policy requires that all network traffic must be secure, and no web browser certificate error warnings should be accepted by end users.

An administrator is tasked with configuring Objects so that it uses a certificate from an internal Certificate Authority (CA).

How should the administrator configure Objects to meet the security policy?

- A. Import the Private key with a Subject Alternate Name of the company domain.
- B. Import the Private key and certificate files from the internal CA
- C. Regenerate the CSR and download certificates from the internal CA
- D. Regenerate the self-signed certificate with RSA 2048 as the bit type.

Correct Answer: B

Section:

QUESTION 46

While preparing for migrating data from a legacy storage environment to a new Files scaleout file server, the administrator make the following notes Requirements

- Number of home directories: 4000
- Number of Departmental shares: 1
- Everyone is permitted to accessing it
- All users use the same Departmental share

The administrator deploys Files using the following configuration:

- Number of FSVMS: 3
- VCPU & RAM/FSVM: 4vCPU,12GB
- One Distributed share & ABE enabled for
- One Standard share for the Departmental share

Does this configuration satisfy the project's requirements?

- A. No, the project needs two distributed shares, 4 FSVMS, 24 vCPU & 128GB RAM
- B. No, the project needs two distributed shares, 4 FSVMS, 6 VCPU & 32GB RAM
- C. No, the project needs 4 FSVMS, 4 VCPU & 12GB RAM
- D. Yes, the listed configuration elements satisfy the requirements the Home Directories

Correct Answer: D

Section:

QUESTION 47

An administrator followed best practice using Prism Central to perform an upgrade to objects.

However, the following warning was received:



A Nutanix Objects Upgrade failed to complete properly.
The administrator needs to review the logs specific to the upgrade process.
Which 2 log files should the administrator review to determine the failure? (Choose Two)

- A. /home/Nutanix/aoss/logs/aoss_service_manager.out
- B. /home/Nutanix/msp/logs/msp_controller.out
- C. /home/Nutanix/data/logs/aoss_service_manager.out
- D. /home/Nutanix/data/logs/msp_controller.out

Correct Answer: C, D

Section:

QUESTION 48

An administrator is experiencing the following objects failure error message:
IAM service is not healthy
The object store domain entries appear grayed out in the user interface, as shown in the exhibit.
Which commands should the administrator execute to identify the failure source?

- A. A mspcli cluster_list
B mspcli status -u <UUID-UUID-UUID-UUID>
- B. A mspctl cluster_objects
B mspctl status -u <UUID-UUID-UUID-UUID>
- C. A mspcli cluster_objects
B mspcli status -u <UUID-UUID-UUID-UUID>
- D. A mspctl cluster_list
B mspctl status -u <UUID-UUID-UUID-UUID>



Correct Answer: C

Section:

QUESTION 49

An administrator must configure the storage environment to allow 40 physical and virtual clients to access the same storage simultaneously in a secured manner, while each client has an active connection and works with a portion of the data. The client should not be able to talk directly to the CVMs subset.
Which solution should the administrator implement to satisfy this requirement?

- A. Implement objects with RBAC access and 40 buckets and enable iSCSI network segmentation
- B. Implement calm with a blueprint which deploys 40 windows file servers connected to AD on a separate subset.
- C. Implement Files with one network only and create a distributed share with ABE enabled and 40 folders in it.
- D. Implement Volumes with default number of virtual targets per VG, CHAP and network segmentation.

Correct Answer: A

Section:

QUESTION 50

What fields are included in Object Store alerts?

- A. Alert Time, Alert Type, Severity, Title, Message, UUID

- B. Title, Source, Impact, severity, resolved, Acknowledged and Create Time
- C. Name, Description, Severity, Created and Silenced
- D. Severity, Issues, Create Time, Last Occurred, Status, Entities, Documentation

Correct Answer: C

Section:

Explanation:

https://support-portal.nutanix.com/page/documents/details?targetId=Objectsv3_1:v31-viewosalerts-t.html

QUESTION 51

A company has implemented a new Retention policy requiring all Human Resources Documents with these characteristics:

- Able to be stored for 7 years and then automatically deleted.
- Previous versions of the document must be retained for a minimum for 1 year.

The company is currently using objects as the backend storage for all data. Which action best enforces the Retention Policy?

- A. Deploy a new bucket named "humanresources" and Enable Versioning with Permanently delete past versions after 2 years. Additionally enable Lifecycle Policies to Expire current objects after 7 years.
- B. Deploy a new bucket named "Human Resources" and Enable Versioning with Permanently delete past versions after 1 year. Additionally enable Lifecycle Policies to expire current objects after 7 years.
- C. Deploy a new bucket name "Human Resources" and apply WORM for 7 years.
Have the administrator write a script to clear out the data once the retention period is reached.
- D. Deploy a new bucket named "humanresources" and Enable Versioning with Permanently delete past versions after 7 years. Additionally enable Lifecycle Policies to Expire current objects after 1 year.

Correct Answer: A

Section:

Explanation:

https://support-portal.nutanix.com/page/documents/details?targetId=Objectsv3_1:v31-objectssalient-features-c.html



QUESTION 52

A company has deployed several File clusters, which are managed by a single File Analytics instance. An administrator is trying to get File Distribution by Type information, but the data shown in the GUI seems to be incorrect. What should the administrator do in order to get the correct data?

- A. Verify that the right File server view is being observed
- B. Install another File Analytics instance for the file server being managed
- C. Modify the administrator's Role Based Access Control settings
- D. Create a new dashboard to manage the desired file server

Correct Answer: A

Section:

QUESTION 53

What are the three predefined resource profiles when deploying Objects?

- A. Small, Medium, and Heavy
- B. Light Medium, and Large
- C. Light Medium, and Heavy
- D. Small, Medium, and Large

Correct Answer: C

Section:

QUESTION 54

A company has distributed a new document bundle, entitled Health and Security Policies to all employees H has to verify if key users have opened the document How can an administrator support this request with File Analytics

- A. Use Audit Trails search for Files View Audit and filter by operations
- B. Use Audit Trails search for Users, View Audit and filter by file
- C. Select the file from the Top 5 Accessed list then filter by user
- D. Select the User from the Top 5 Active Users list the filter by file

Correct Answer: B

Section:

