

VCE.210-020.by.Tian.61q

Number: 210-020
Passing Score: 800
Time Limit: 120
File Version: 21.0

Exam Code: 210-020

Exam Name: VCE Vblock System Deployment and Implementation – Compute



Exam A

QUESTION 1

Which UCS component provides network connectivity between UCS chassis and Nexus network switches on a Vblock® System 300?

- A. mezzanine card
- B. blade server
- C. rack server
- D. fabric interconnect

Correct Answer: C

Section:

QUESTION 2

You are asked to create additional VLANs in the UCS Manager. According to VCE, which setting would be chosen to complete this task?

- A. Both Fabrics Configured Differently
- B. Fabric A
- C. Fabric B
- D. Common/Global

Correct Answer: D

Section:

QUESTION 3

Which two port types would be configured in the UCS fabric interconnect? (Choose two.)

- A. Fibre Channel uplink ports between the fabric interconnect and the uplink Fibre Channel switch
- B. Fibre Channel server ports between the I/OM and the back-end server ports
- C. Ethernet uplink ports between the fabric interconnect and the up-link Ethernet switch
- D. server ports between the fabric interconnect and the storage

Correct Answer: A, C

Section:

QUESTION 4

Which tool is used to associate a UCS service profile to a blade server?

- A. Unisphere
- B. UCS Manager
- C. Data Center Network Manager
- D. Fabric Manager



Correct Answer: A

Section:

QUESTION 5

You have identified a blade that has faulty hardware and must be replaced. You have an unused blade that is not associated with any service profile. What are two ways to provision the unused blade with the same policies? (Choose two.)

- A. Clone the service profile and apply it to the unused blade.
- B. Create a new service profile template from the faulty blade.
- C. Change the service profile association.
- D. Change the UUID of faulty blade to that of the unused blade.

Correct Answer: A, C

Section:

QUESTION 6

What is the central concept of Cisco UCS that ensures associated server hardware has the required configuration?

- A. Templates
- B. Service profiles
- C. Resource pools
- D. Maintenance policy

Correct Answer: B

Section:

QUESTION 7

Click the Exhibit button.



Show Navigator	
Change Initial Power State	
KVM Console	
SSH to CIMC for SoL	
Rename Service Profile	
Create a Clone	
Create a Service Profile Template	
Disassociate Service Profile	
Change Service Profile Association	
Associate with Server Pool	
Bind to a Template	
Unbind from the Template	
Change UUID	
Reset UUID	
Change Management IP Address	
Reset Management IP Address	
Change Dynamic vNIC Connection Policy	
Change Local Disk Configuration Policy	
Change Serial over LAN Policy	
Change World Wide Node Name	
Modify vNIC/vHBA Placement	
Start Fault Suppression	
Stop Fault Suppression	
Copy	Ctrl+C
Copy XML	Ctrl+L
Delete	Ctrl+D



Referring to the exhibit, what should you select to remove a service profile?

- A. Change Service Profile Association
- B. Unbind from the Template
- C. Delete
- D. Reset UUID

Correct Answer: C

Section:

QUESTION 8

You are performing the logical build on a Vblock System 340 with 32 blades and UIM/P is not going to be used. You need to deploy multiple service profiles at one time. In the UCSM GUI, what would you select?

- A. Create Service Profile (expert)
- B. Create Service Profiles from Template
- C. Create Service Profile from Template
- D. Create Service Profile

Correct Answer: B

Section:

QUESTION 9

You must create several service profiles that will all have the same policies and will also be updated in the future. Which action would allow you to update multiple service profiles after they have been associated?

- A. Create a service profile clone of each service profile.
- B. Create a service profile template with type set to initial template.
- C. Create a service profile template with type set to updating template.
- D. Create an update policy for each service profile.

Correct Answer: C

Section:

QUESTION 10

You are adding a new blade to a UCS chassis. You want the new blade to obtain all of your policies that are currently applied to another service profile. Which three actions will accomplish this task? (Choose three.)

- A. Clone the service profile from an existing service profile.
- B. Create the service profile from a template.
- C. Reassign the service profile to a new server.
- D. Copy the service profile between blades.
- E. Create a new service profile using the same policies.

Correct Answer: A, B, E

Section:

QUESTION 11

To associate a blade with a service profile, what information is required? (Choose two.)

- A. chassis ID
- B. primary fabric interconnect
- C. a management IP address for the ESXi host
- D. server slot

Correct Answer: A, D

Section:

QUESTION 12

You want to associate a service profile in UCS. Which action would you perform?

- A. Select the ESXi server that you want to associate.
- B. Select the service offering that you want to associate.
- C. Select the chassis that you want to associate.
- D. Select Change Service Profile Association on the service profile.



Correct Answer: D

Section:

QUESTION 13

The VCE qualified parameters for a policy setting are shown below:

Before connecting a new chassis, which policy helps determine the number of links between the new chassis and the fabric interconnect?

- A. Chassis Power Policy
- B. Chassis Connectivity Policy
- C. Boot Policy
- D. Discovery Policy

Correct Answer: D

Section:

QUESTION 14

Which policy helps to configure the Fiber Channel priority to determine the percent of Data Center Ethernet (DCE) bandwidth allocated?

- A. SAN Connectivity Policy
- B. LAN Connectivity Policy
- C. QoS Policy
- D. Fiber Channel Adapter Policy

Correct Answer: C

Section:

QUESTION 15

In the UCS system, what is the purpose of the Chassis Discovery Policy?

- A. It defines the minimum number of links to be used in the data plane.
- B. It defines the maximum number of links to be used in the data plane.
- C. It defines the minimum number of links necessary before a chassis can be discovered.
- D. It defines the maximum number of links necessary before a chassis can be discovered.

Correct Answer: C

Section:

QUESTION 16

Which setting is determined by a boot policy in a UCS service profile?

- A. the boot LUN ID
- B. the boot LUN size
- C. the boot device order
- D. the boot storage pool size

Correct Answer: C

Section:



QUESTION 17

Which policy is used to determine server boot order?

- A. boot policy
- B. power control policy
- C. maintenance policy
- D. BIOS policy

Correct Answer: B

Section:

QUESTION 18

After activating the host firmware package during a UCS code upgrade, all of the blades in the Vblock System 340 begin a reboot process. Which policy is required to prevent this from occurring?

- A. power control policy set to "cap"
- B. maintenance policy set to "user acknowledge"
- C. boot policy set to "Boot Mode=UEFI"
- D. BIOS policy set to "Quiet Boot=enabled"

Correct Answer: B

Section:

QUESTION 19

Each UCS chassis in a Vblock System 300 is connected to two POUs. What is the VCE recommended setting for the power policy?

- A. non-redundant
- B. n+1
- C. grid
- D. switched power supply

Correct Answer: C

Section:

QUESTION 20

You want to acknowledge a reboot after making configuration changes to a service profile. Which type of policy is needed?

- A. BIOS policy
- B. maintenance policy
- C. power control policy
- D. boot policy

Correct Answer: B

Section:



QUESTION 21

You want to create a BIOS policy in accordance with VCE best practices. What would you do to accomplish this task?

- A. You create a BIOS policy only when using UIM/P.
- B. You create a BIOS policy only when using UCSM.
- C. You create a BIOS policy when using UIM/P or UCSM.
- D. You do not create a BIOS policy when using UIM/P or UCSM.

Correct Answer: C

Section:

QUESTION 22

Which three settings does a boot policy determine? (Choose three.)

- A. the configuration of the boot device
- B. the operating system to be installed
- C. the location from which the server boots
- D. the order in which boot devices are invoked
- E. the service profile to be associated

Correct Answer: A, C, D

Section:

QUESTION 23

According to the VCE Logical Build Guide, what is the correct boot order when configuring a boot policy?

- A. 1. LAN2. Storage3. CD-ROM
- B. 1. CD-ROM2. Storage3. LAN
- C. 1. Storage2. LAN3. CD-ROM
- D. 1. Storage2. CD-ROM3. LAN

Correct Answer: B

Section:

QUESTION 24

You want to configure the local disk policy on a Vblock System 720. According to the VCE Logical Build Guide, which mode would you use?

- A. RAID 1 - Mirrored
- B. No RAID
- C. RAID 5 - Striped Parity
- D. No Local Storage

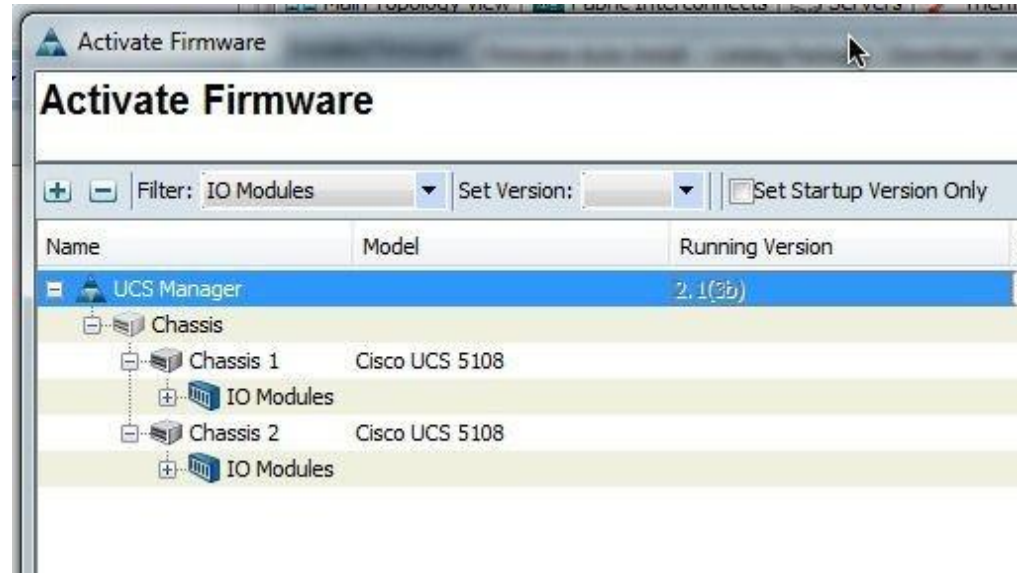
Correct Answer: D

Section:



QUESTION 25

Click the Exhibit button.



Referring to the exhibit, what are two results of the cluster lead b command? (Choose two.)

- A. The UCS FI-A will reboot and FI-B will become the cluster leader.
- B. The UCS will assign a cluster IP address to FI-B.
- C. The UCS FI-B will become the cluster leader.
- D. The UCS will swap assigned IP addresses between FI-A and FI-B.

Correct Answer: B, C

Section:



QUESTION 26

You are preparing to upgrade the UCS components and firmware of a Vblock System 300 with 16 blades. You can only upgrade one blade at a time.

This is a standard configuration and it does not contain any RDMS attached to the vSphere hosts.

According to the VCE Vblock Upgrade Guide, what is the estimated time-frame that the upgrade will take?

- A. 4 hours
- B. 6 hours
- C. 8 hours
- D. 10 hours

Correct Answer: B

Section:

QUESTION 27

Click the Exhibit button.



The startup version has been updated to version 2.13.c.

What is the result of activating the I/O modules shown in the exhibit?

- A. The UCS will stage the new code to one I/O module, the module will not reboot.
- B. The UCS will stage the new code to both I/O modules, the modules will not reboot.
- C. The UCS will apply staged code on one I/O module, the module will reboot.
- D. The UCS will apply staged code on both I/O modules, the modules will reboot.

Correct Answer: D

Section:

QUESTION 28

A production UCS environment is receiving hardware upgrades. You perform a software upgrade from version 2.0 to version 2.1.1e. After completing the upgrade tasks successfully, the systems starts reporting several alerts shown below:

Fault Code:F0502 Message DIMM invalid FRU DIMM

Fault Code:F0801 Message Processor invalid FRU Processor Fault Code:F0200 Message Adapter unidentified FRU Adapter

Which action will resolve the alerts?

- A. Reinstall the Infrastructure Software Bundle package.
- B. Reboot both fabric interconnects, one at a time.
- C. Update the Capability Catalog.
- D. Change the log settings level to report errors only.

Correct Answer: C

Section:

QUESTION 29

Given the steps shown below:

1. Activate Cisco UCS Manager
2. Activate the I/O modules
3. Disable Call Home
4. Activate the subordinate fabric interconnect
5. Activate CIMC

What is the correct order of operation for a manual UCS upgrade from 2.0 to 2.1?



- A. 5, 3, 1, 2, 4
- B. 3, 1, 4, 5, 2
- C. 3, 5, 1, 2, 4
- D. 1, 3, 5, 4, 2

Correct Answer: C

Section:

QUESTION 30

Click the Exhibit button.

```
dc-fi-A# show cluster state
Cluster Id: 0x532e2124ead411e1-0xb166000573b5ad84
```

```
A: UP, SUBORDINATE
B: UP, PRIMARY
```

```
HA READY
alln01-dc-fi-A# connect local-mgmt
Cisco Nexus Operating System (NX-OS) Software
TAC support: http://www.cisco.com/tac
Copyright (c) 2009, Cisco Systems, Inc. All rights reserved.
The copyrights to certain works contained in this software are
owned by other third parties and used and distributed under
license. Certain components of this software are licensed under
the GNU General Public License (GPL) version 2.0 or the GNU
Lesser General Public License (LGPL) Version 2.1. A copy of each
such license is available at
http://www.opensource.org/licenses/gpl-2.0.php and
http://www.opensource.org/licenses/lgpl-2.1.php
```

```
dc-fi-A(local-mgmt)# cluster lead a
```

You are connected to a Cisco fabric interconnect and have been asked to verify the high availability status. Referring to the exhibit, what will the cluster lead a command do?

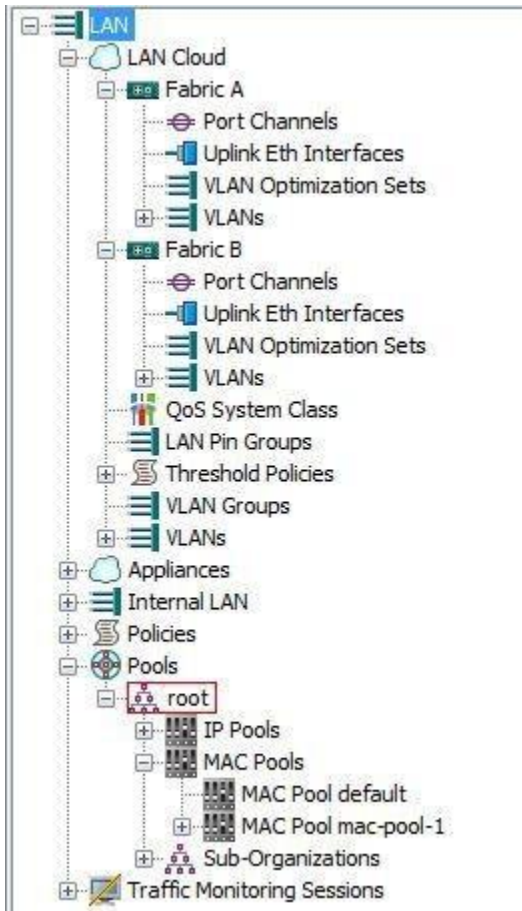
- A. It changes the fabric interconnect to operate in standalone mode.
- B. It sets the Cisco Stackwise Cluster lead to the A switch.
- C. It sets the subordinate fabric interconnect to be the primary.
- D. It will fail, since the switch is already the primary.

Correct Answer: C

Section:

QUESTION 31

Click the Exhibit button.



Referring to the exhibit, according to the VCE Logical Build Guide, in which location do you create customer VLANs to support data traffic?

- A. LAN > LAN Cloud > Fabric A > VLANs
- B. LAN > LAN Cloud > Fabric A
- C. LAN > LAN Cloud > VLANs
- D. LAN > Internal LAN

Correct Answer: C

Section:

QUESTION 32

Which two port channel speed selections are available when you configure a Fibre Channel port? (Choose two.)

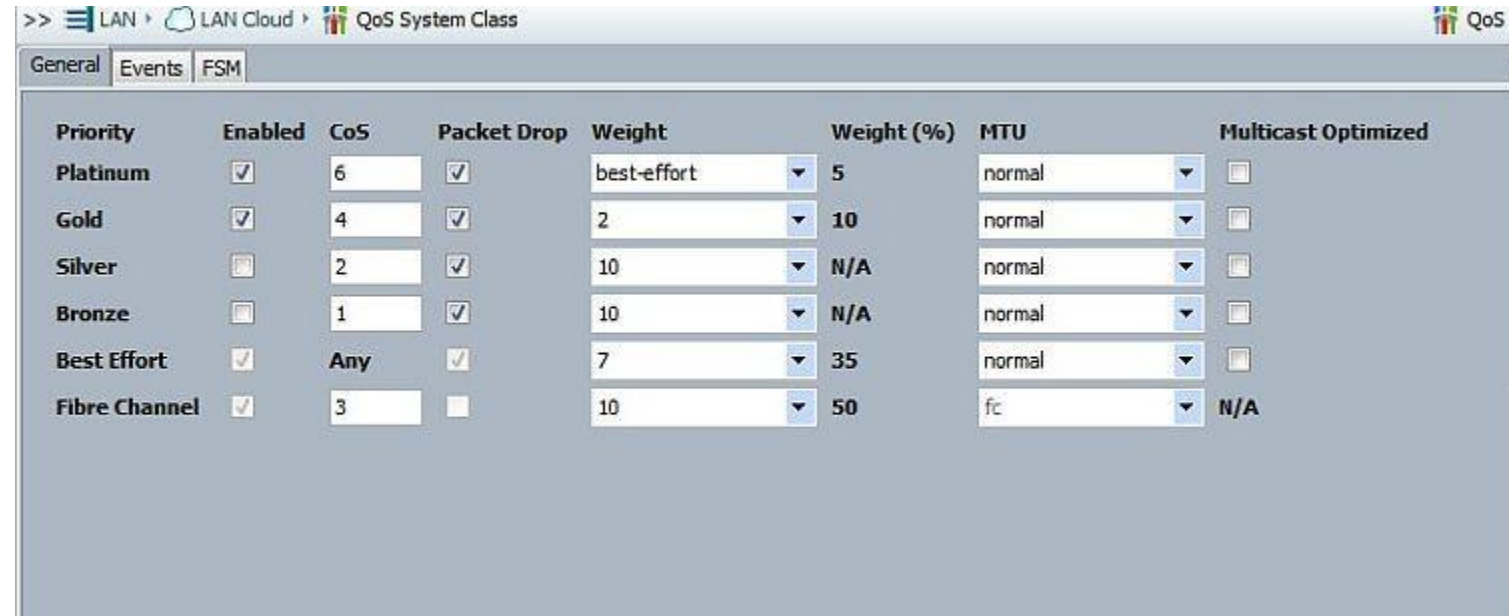
- A. Auto
- B. 2 Gbps
- C. 8 Gbps
- D. 10 Gbps

Correct Answer: A, C

Section:

QUESTION 33

Click the Exhibit button.



Priority	Enabled	CoS	Packet Drop	Weight	Weight (%)	MTU	Multicast Optimized
Platinum	<input checked="" type="checkbox"/>	6	<input checked="" type="checkbox"/>	best-effort	5	normal	<input type="checkbox"/>
Gold	<input checked="" type="checkbox"/>	4	<input checked="" type="checkbox"/>	2	10	normal	<input type="checkbox"/>
Silver	<input type="checkbox"/>	2	<input checked="" type="checkbox"/>	10	N/A	normal	<input type="checkbox"/>
Bronze	<input type="checkbox"/>	1	<input checked="" type="checkbox"/>	10	N/A	normal	<input type="checkbox"/>
Best Effort	<input checked="" type="checkbox"/>	Any	<input checked="" type="checkbox"/>	7	35	normal	<input type="checkbox"/>
Fibre Channel	<input checked="" type="checkbox"/>	3	<input type="checkbox"/>	10	50	fc	N/A

Your client explains that they are not able to communicate with virtual machines in the UCS using a packet size of 9000. Referring to the exhibit, what needs to be corrected to resolve the network problem?

- A. QoS system Class > priority Platinum > MTU > 9216
- B. QoS system Class > priority Gold > MTU > 9216
- C. QoS system Class > priority Silver > MTU > 9216
- D. QoS system Class > priority Best Effort > MTU > 9216

Correct Answer: D

Section:

QUESTION 34

Which L1/L2 connectivity condition must be met for UCS fabric interconnects to work in a cluster?

- A. The L1 and L2 ports on both fabric interconnects are locally switched.
- B. The L1 and L2 ports on both fabric interconnects are routed.
- C. The L1 and L2 ports are direct connected between fabric interconnects.
- D. The L1 and L2 ports are cross connected between fabric interconnects.

Correct Answer: C

Section:

QUESTION 35

What are two purposes of the L1/L2 ports on a fabric interconnect? (Choose two.)

- A. They carry the Fibre Channel traffic for SAN only.
- B. They carry cluster heartbeat messages between two fabric interconnects.
- C. They carry high-level management messages between the two devices.
- D. They carry data plane traffic in the event of a fabric interconnect failure.

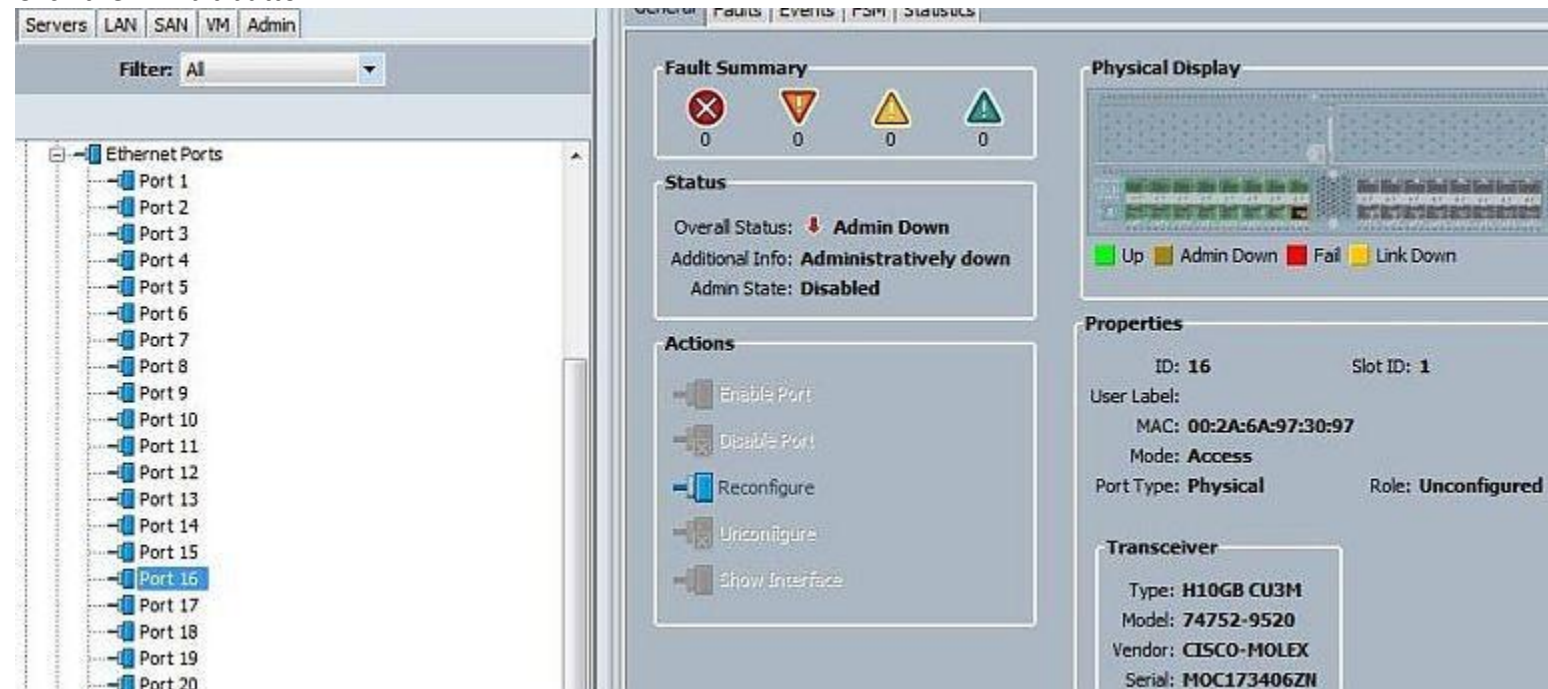


Correct Answer: B, C

Section:

QUESTION 36

Click the Exhibit button.



A client wants to bring up port 16 connected to an I/O module, but the port will not come up despite verifying the physical cabling of the Twinax cables. Referring to the exhibit, which action will resolve the problem?

- A. Re-enable the port.
- B. Configure as an uplink port.
- C. Reset the I/O module.
- D. Configure as a server port.

Correct Answer: D

Section:

QUESTION 37

During a Vblock System 340 deployment, you are asked to configure an ESXi server for testing. You install the server OS and setup the network configuration. You then create separate VLANs and port channels to the core switches. You are unable to ping the ESXi host on the blade. The network adapter shows a status of connected from the ESXi host on the correct vNIC. Which two statements describe the reason for the problem? (Choose two.)

- A. The UCS vNIC is not configured with the corresponding VLAN.
- B. The disjointed Layer 2 network topology is not properly configured.
- C. The ESXi host has a specified VLAN ID and VLAN tagging is not in use.
- D. The ESXi host has no VLAN ID and VLAN tagging is not in use.

Correct Answer: A, C

Section:

QUESTION 38

Which three statements are true about UCS port licensing? (Choose three.)

- A. Port licenses are bound to the physical ports.
- B. Port licenses are not bound to physical ports.
- C. Licenses are transferable across product generations.
- D. When a port is disabled, that license is retained for use by the next enabled port.
- E. If a licensed port is unconfigured, that license is transferred to a port function within a grace period.

Correct Answer: B, D, E

Section:

QUESTION 39

Your client wants to configure jumbo frames for Network File Storage in the UCS. Which three sections must be configured to support this request? (Choose three.)

- A. QoS system Class priority Silver > MTU > 9216
- B. QoS system class priority Default > MTU > 9000
- C. vNIC templates > MTU to 9000
- D. root > QoS policy > VCE_QoS_Default needs to exist
- E. root > QoS policy > VCE_QoS_Silver needs to exist

Correct Answer: A, C, E

Section:

QUESTION 40

In the UCS, where do you assign system classes for individual vNICs and vHBAs?

- A. QoS MTU
- B. QoS System Class
- C. QoS Policy
- D. QoS CoS

Correct Answer: C

Section:

QUESTION 41

According to VCE best practices, which type of switch mode is used by the fabric interconnect?

- A. end-host mode
- B. spanning tree mode
- C. standalone mode
- D. switching mode

Correct Answer: A

Section:

QUESTION 42

Which two statements are true about a UCS fabric interconnect cluster? (Choose two.)



- A. Both data planes are able to actively forward traffic.
- B. Only the active fabric interconnect is able to actively forward traffic.
- C. The management plane operates in active-standby mode between the two devices.
- D. The management plane operates in active-active mode between the two devices.

Correct Answer: A, C

Section:

QUESTION 43

Click the Exhibit button.

```
ucs01-B# show cluster extended-state
Cluster Id: 0xe123456789123456-0xac12345678987456
```

```
Start time: Mon Apr 8 00:00:16 2014
Last election time: Tue Apr 22 18:50:00 2014
```

```
B: UP, SUBORDINATE, (Management services: SWITCHOVER IN PROGRESS)
A: UP, PRIMARY, (Management services: SWITCHOVER IN PROGRESS)
```

```
B: memb state UP, lead state SUBORDINATE, mgmt services state:
INVALID
A: memb state UP, lead state PRIMARY, mgmt services state:
INVALID
heartbeat state PRIMARY_OK
```

```
INTERNAL NETWORK INTERFACES:
eth1, UP
eth2, UP
```

```
HA NOT READY
Management services: switchover in progress on local Fabric
Interconnect
Detailed state of the device selected for HA storage:
Chassis 1, serial: FOX12345678, state: active
Chassis 2, serial: FOX12345679, state: active
```

The UCSM is not accessible. Connecting to a fabric interconnect and issuing the show cluster extended-state command displays output shown in the exhibit. What must be done to resolve this issue?

- A. Restart the UCS Manager.
- B. Reboot both fabric interconnects using the CLI separately.

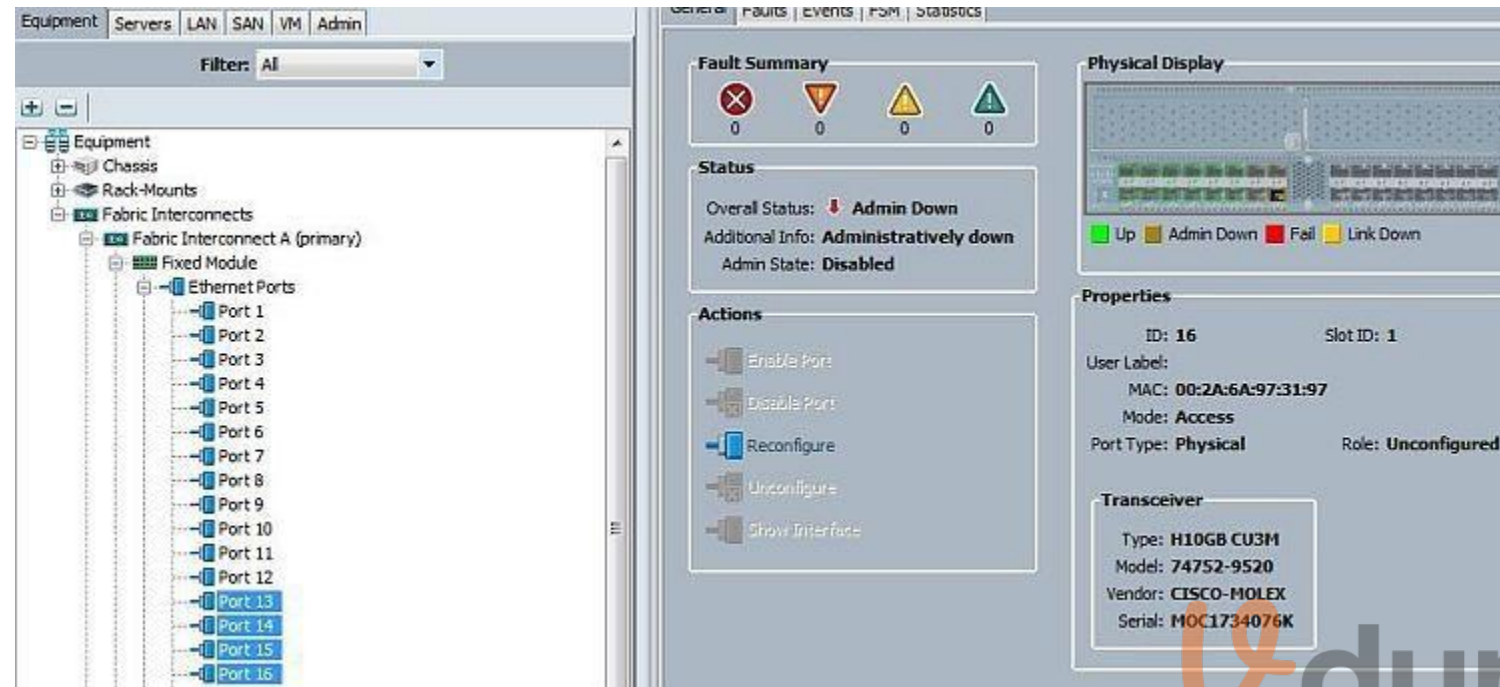
- C. Execute the connect local-mgmt command on each fabric interconnect.
- D. Disable the fabric interconnect uplink ports.

Correct Answer: B

Section:

QUESTION 44

Click the Exhibit button.



A client has added a new chassis and connected ports 13 through 16 on both fabrics to the I/O modules. The client has verified the Twinax cabling. The Chassis/FEX Discovery Policy is set to 4 Link. However, the new chassis still fails the discovery process.

Referring to the exhibit, what would resolve the problem?

- A. Enable the Administratively down ports.
- B. Configure the links as uplink ports.
- C. Configure the links as server ports.
- D. Reset the I/O modules.

Correct Answer: C

Section:

QUESTION 45

Click the Exhibit button.

A client decides to add a new chassis with six additional blades. The chassis is using model 2204 I/O modules with four Twinax cables per I/O module connected to fabric interconnects A and B, and ports 17 through 20. When the client tries to discover the new chassis, they receive "fabric-unsupportedconn" error messages and are not able to use all four links.

Referring to the exhibit, which two actions would resolve the problem? (Choose two.)

- A. Change the Link Grouping Preference option to None.
- B. Change the discovery policy to 4 links.
- C. Power cycle the new chassis.
- D. Choose Acknowledge Chassis.
- E. Reduce the Twinax cables from 4 to 1.

Correct Answer: B, D

Section:

QUESTION 46

Cisco UCS supports which two types of service profile templates? (Choose two.)

- A. initial template
- B. vNIC template
- C. vHBA template
- D. updating template

Correct Answer: A, D

Section:

QUESTION 47

Which three UCS template types must be created when performing a Vblock System 720 logical build? (Choose three.)

- A. service profile template
- B. vHBA template
- C. SAN connectivity template
- D. LAN connectivity template
- E. vNIC template

Correct Answer: A, B, E

Section:



QUESTION 48

During an implementation of a Vblock 320, new Cisco UCS blades need to be provisioned using UCS Manager. What are two correct methods to accomplish this task? (Choose two.)

- A. The service profile can be provisioned from a template.
- B. The service profile can be associated from another service profile.
- C. The service profile can be cloned from another service profile.
- D. The service profile can be provisioned from service manager.

Correct Answer: A, C

Section:

QUESTION 49

Which service profile template is used to update a blades firmware?

- A. Updating template
- B. vHBA template
- C. vNIC template
- D. Power template

Correct Answer: D

Section:

QUESTION 50

Which three parameters must be set to configure a vNIC template? (Choose three.)

- A. MTU
- B. LAN Connectivity Policy
- C. MAC Pool
- D. Pin Group
- E. QoS Policy

Correct Answer: A, C, E

Section:

QUESTION 51

You are creating UCS vHBA templates.

When performing this task using the wizard, what are three configurable settings? (Choose three.)

- A. Fabric ID
- B. Default Domain
- C. QoS Policy
- D. MTU
- E. WWN Pool

Correct Answer: A, C, E

Section:



QUESTION 52

During a deployment and implementation of a Vblock 320, twelve blades must be provisioned using UCS service profile templates.

Which three components should be created before provisioning? (Choose three.)

- A. UUID pool
- B. server pool
- C. WWNN pool
- D. WWPN pool
- E. iSCSI initiator pool

Correct Answer: A, C, D

Section:

QUESTION 53

You have one UCS domain and want to create four vNICs. To create the four MAC pools, you must enter the values of the block of MAC addresses.

According to the VCE Logical Build Guide, what are these values?

- A. vNIC-0-Fabric-A=00:25:B5:02:A0:00vNIC-1-Fabric-B=00:25:B5:02:B1:00vNIC-2-Fabric- A=00:25:B5:02:A2:00vNIC-3-Fabric-B=00:25:B5:02:B3:00
- B. vNIC-0-Fabric-B=00:25:B5:01:B0:00vNIC-1-Fabric-A=00:25:B5:01:A1:00vNIC-2-Fabric- B=00:25:B5:01:B2:00vNIC-3-Fabric-A=00:25:B5:01:A3:00
- C. vNIC-1-Fabric-A=00:25:B5:01:A1:00vNIC-2-Fabric-B=00:25:B5:01:B2:00vNIC-3-Fabric- A=00:25:B5:01:A3:00vNIC-4-Fabric-B=00:25:B5:01:B4:00

D. vNIC-0-Fabric-A=00:25:B5:01:A0:00vNIC-1-Fabric-B=00:25:B5:01:B1:00vNIC-2-Fabric- A=00:25:B5:01:A2:00vNIC-3-Fabric-B=00:25:B5:01:B3:00

Correct Answer: D

Section:

QUESTION 54

A customer wants you to install two Vblock System 340s. When you connect the second system to the customer's network, you begin seeing intermittent network connectivity problems. What is the problem?

- A. The firmware versions of the fabric interconnects are different.
- B. The Vblock System 340s have duplicate MAC addresses.
- C. The Vblock System 340s have duplicate WWPNs.
- D. The firmware versions of the Nexus 5548 switches are different.

Correct Answer: B

Section:

QUESTION 55

You have two UCS domains and four vHBAs. You want to create the WWPN pool for vHBA-1 on UCS domain 1. According to the VCE Logical Build Guide, which two identifiers should you choose when creating the WWN Block Page? (Choose two.)

- A. B0 for fabric B vHBA1
- B. B1 for fabric B vHBA1
- C. 00 for UCS domain 1
- D. 01 for UCS domain 1



Correct Answer: B, D

Section:

QUESTION 56

You are configuring the SNMP settings in the UCS manager. No values are specified in the customer's configuration survey. Which setting should remain as the default setting?

- A. community name
- B. port
- C. type
- D. version

Correct Answer: B

Section:

QUESTION 57

A blade is stuck in the discovery state. Which action should you perform to resolve the problem?

- A. Reset the blade.
- B. Re-acknowledge the blade.

- C. Decommission the blade.
- D. Reset CMOS for the blade.

Correct Answer: B

Section:

QUESTION 58

Click the Exhibit button.

Referring to the exhibit, which three fields of Cisco's Smart Call Home must be completed to successfully set it up? (Choose three.)

- A. Customer ID
- B. Site ID
- C. Email Addresses
- D. Throttling = Off
- E. SMTP Server

Correct Answer: A, C, E

Section:

QUESTION 59

Click the Exhibit button.



The screenshot displays the Cisco UCS Manager interface for a system named 'A'. It is divided into several sections:

- Fault Summary:** Shows four fault categories with zero counts: Critical (red X), Major (orange triangle), Minor (yellow triangle), and Warning (green triangle).
- Status:** Overall Status is 'Operable'. Thermal status is 'N/A'. Ethernet Mode is 'End Host'. FC Mode is 'End Host'.
- Actions:** A list of management tasks including 'Configure Unified Ports', 'Internal Fabric Manager', 'LAN Uplinks Manager', 'NAS Appliance Manager', 'SAN Uplinks Manager', 'SAN Storage Manager', 'Enable Ports', 'Disable Ports', 'Set Ethernet End-Host Mode', 'Set Ethernet Switching Mode', 'Set FC End-Host Mode', 'Set FC Switching Mode', 'Activate Firmware', and 'Management Interfaces'.
- Physical Display:** A visual representation of the server hardware with a legend for port status: Up (green), Admin Down (brown), Fail (red), and Link Down (yellow).
- Properties:**
 - Name: A
 - Product Name: Cisco UCS 6296UP
 - Vendor: Cisco Systems, Inc.
 - Revision: 0
 - Available Memory: 0.355 (GB)
 - PID: UCS-FI-6296UP
 - Serial: JAB121800UL
 - Total Memory: 1.045 (GB)
- Firmware:**
 - Boot-loader Version: 1.0
 - Kernel Version: 5.0(3)N2(2.10.466)
 - System Version: 5.0(3)N2(2.10.466)
 - Package Version:
 - Startup Kernel Version: 5.0(3)N2(2.10.466)

To successfully upgrade a UCS platform, you need to determine the leadership roles of the fabric interconnects. Referring to the exhibit, where would you look for this information?

- A. Local Storage Information
- B. Access
- C. High Availability Details
- D. Management Interfaces

Correct Answer: C
Section:

QUESTION 60

Your client requires a UCS backup to be used to populate user names, roles, and locales in a new UCS. Which UCS backup type is used in this situation?

- A. Full State
- B. All Configuration
- C. Logical Configuration

D. System Configuration

Correct Answer: D

Section:

QUESTION 61

You are deploying a Vblock System 200 and must configure the CIMC NIC.
Which VCE recommended setting should you use?

- A. Shared LOM
- B. Cisco Card
- C. Dedicated
- D. Shared LOM Extended

Correct Answer: C

Section:

