

VCE.220-010.by.Endy.51q

Number: 220-010  
Passing Score: 800  
Time Limit: 120  
File Version: 4.0

**Exam Code: 220-010**

**Exam Name: VCE Vblock Systems Administration**

## Exam A

### QUESTION 1

Which UCSM policy defines values for alerts?

- A. Server
- B. Threshold
- C. Firmware
- D. Local Disk

**Correct Answer: B**

**Section:**

### QUESTION 2

Your environment uses resource pool management to automate and enforce device identities in your organization including troubleshooting. In this scenario, which three resources are managed? (Choose three)

- A. MAC addresses
- B. WWNs
- C. LUN Identifiers
- D. UUIDs
- E. Secured Service Ports

**Correct Answer: A, B, D**

**Section:**

### QUESTION 3

Your company just hired a new employee and the company wants to allow this employee to have read only access to the VMware environment and full access on a test cluster. How would this be done?

- A. At the data center level, grant the employee a role that allows full access.
- B. At the data center level, grant the employee a role that allows read only access
- C. At the data center level, grant a role with read only access and at the test cluster level, grant a role that allow full access.
- D. At the data center level, grant a role with full access and at the test cluster level, grant a role that allows read only access.

**Correct Answer: C**

**Section:**

### QUESTION 4

Click the Exhibit button.

-- Exhibit --

```
vsan 1 informationname:VSAN0001 state:activeinteroperability modE. default loadbalancing:src-id/dst-id/oxidoperational state:down
```

-- Exhibit --

Referring to the exhibit, which statement is correct?

- A. VSAN is able to pass traffic.
- B. VSAN is not able to pass traffic.
- C. At least one port on the VSAN is up.
- D. VSAN is disabled.

**Correct Answer: B**

**Section:**

#### **QUESTION 5**

You are adding a new VLAN to your Vblock® System 340. You create the VLAN on both your Nexus 5000 series switches. Which two steps are required before this VLAN should be used? (Choose two)

- A. Add the VLAN to an untagged port channel.
- B. Add the VLAN to the port channel between the Nexus 5000 switches and Fabric Interconnects.
- C. Add the VLAN to the port channel joining the Nexus 5000 switches.
- D. Create a new port channel between the Nexus 5000 switched and Fabric Interconnects with the new VLAN.

**Correct Answer: B, C**

**Section:**

#### **QUESTION 6**

You are asked to create a new UCS template for an upcoming project. What information is required for the template? (Choose two)

- A. Fully qualified domain names for each UCS blade
- B. The World Wide Node Name (WWNN) pool to use
- C. The vNIC adapter policy
- D. The template UUID

**Correct Answer: B, C**

**Section:**

#### **QUESTION 7**

During a configuration audit of your VMware environment, you determine that one of your data stores is smaller than specified by your company's standards. The data store is connected to all hosts in the cluster and is running virtual machines.

Which two actions would you perform to ensure that the data store meets the standards? (Choose two)

- A. Remove and re-create the LUN on the storage array.
- B. Expand the LUN on the storage array.
- C. Increase the data store size in vCenter.
- D. Use vMotion to move virtual machines to another host.

**Correct Answer: B, C**

**Section:**

#### **QUESTION 8**

Your company needs to add a new masking view to their Vblock® System 720.

Which three grouping constructs must be selected? (Choose three)

- A. Initiator group
- B. Disk group
- C. Storage group
- D. Device group
- E. Port group

**Correct Answer: A, C, E**

**Section:**

#### QUESTION 9

You are creating UCS profiles from a template in an environment with multiple organizations defined. The WWNN resource pool for the organization is empty and no default WWNNs are defined. In this scenario, which statement is true?

- A. Resource pools lower in the hierarchy will be searched.
- B. Resource pools higher in the hierarchy will be searched.
- C. Resource pools at the same level in other hierarchies will be searched.
- D. A factory defined random WWNN will be generated.

**Correct Answer: B**

**Section:**

#### QUESTION 10

You need to provision a new Cisco UCS blade on your Vblock® System 340 using UCSM. What are two methods to accomplish this task? (Choose two)

- A. The service profile can be provisioned from a template.
- B. The service profile can be provisioned to multiple blades.
- C. The service profile can be cloned from another service profile.
- D. The service profile can be provisioned from a service manager.

**Correct Answer: A, C**

**Section:**

#### QUESTION 11

You are working on latency problems with a storage pool in your Vblock® System 340. After investigation, you decide that the FAST Cache must be expanded on the VNX. What is required to accomplish this task?

- A. All additional EFD drives must be in the same storage pool as the existing FAST Cache drives.
- B. A separate FAST VP cache is created and storage pools are migrated to it.
- C. The existing FAST Cache must be deleted and the entire cache re-created.
- D. SP Write Cache must be disabled for all pools using FAST Cache prior to expansion.

**Correct Answer: C**

**Section:**

**QUESTION 12**

You are asked to create a series of LUNs within a storage pool that will be used as VMFS data stores and you are unsure what the performance requirements will be. According to EMC, which FAST Tiering Policy should you use?

- A. Auto-Tier
- B. Start High then Auto-Tier
- C. Highest Available Tier
- D. Lowest Available Tier

**Correct Answer: B**

**Section:**

**QUESTION 13**

Your Vblock® System 720 was set up with a FAST VP policy of 100% EFD, 100% FC, with 100% SATA, and then applied the policy to all the storage groups. You have allocated all thin LUNs from the Fibre Channel pool and would like to ensure that all but 10% of the EFD drives can be used by the FAST policy.

Which setting would you use to accomplish this task?

- A. Adjust the Pool Reserved Capacity to 10.
- B. Adjust the compression rate to 10.
- C. Adjust the Data Movement Mode to 10.
- D. Adjust the Relocation Rate to 10.

**Correct Answer: A**

**Section:**

**QUESTION 14**

You are asked to add a new ESXi host to an existing VMware cluster. You identify an available blade with the same specifications.

Which statement is a VCE recommendation?

- A. Hosts in a VMware cluster should each belong to a different VSAN.
- B. Service profiles in a VMware cluster should be kept on as few chassis as possible.
- C. Service profiles in a VMware cluster should be spread out over as many Vblock® Systems as possible.
- D. Hosts in a VMware cluster should always belong to the same service profile template.

**Correct Answer: D**

**Section:**

**QUESTION 15**

You have added physical disks to your Vblock® System 720 to a physical disk group and then created data devices.

What must you do to see the new capacity?

- A. Add the devices to the masking group.
- B. Map the devices to the front end ports.
- C. Add the devices to the thin pool and enable them.
- D. Add the devices to the FAST VP policy.

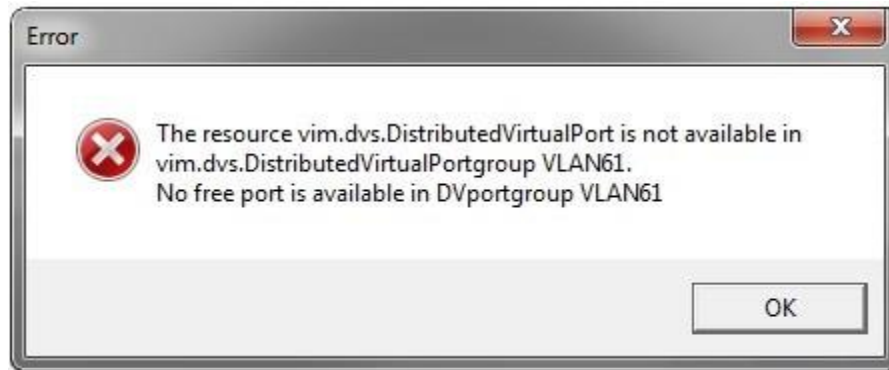
**Correct Answer: C**

**Section:**

**QUESTION 16**

Click the Exhibit button.

-- Exhibit --



-- Exhibit --

You are adding a new VM within vCenter when the error shown in the exhibit occurs.

What does this error indicate?

- A. The Standard vSwitch has run out of ports.
- B. The Standard vSwitch has run out of port licenses.
- C. The Nexus 1000V switch has run out of port licenses.
- D. The Nexus 1000V switch has run out of ports.

**Correct Answer: D**

**Section:**

**QUESTION 17**

You have a single storage pool that has been dedicated for quality assurance and development purposes. Both groups have submitted requests for LUNs, but the total LUN capacity requested exceeds the total available capacity of the pool by several terabytes.

What would you do to satisfy both groups' requests?

- A. Compress the LUNs.
- B. Split the total pool capacity equally between both groups.
- C. Use thin provisioned LUNs to oversubscribe capacity.
- D. Provide network file space to offset the difference.

**Correct Answer: C**

**Section:**

**QUESTION 18**

You are using expandable resource pools in your VMware cluster to ensure each environment is allocated the appropriate resources. There is a resource pool for your development environment that has a reservation of 5 GHz CPU and 12 GB of memory. There is a child resource pool of the development resource pool named Sandbox that has a reservation of 1 GHz CPU and 4 GB of memory. You create four new virtual machines with 4 GB of memory in the Sandbox environment.

In this scenario, which statement is true?

- A. Only one of the new virtual machines will power on.
- B. All new virtual machines will power on.

- C. Only three of the new virtual machines will power on.
- D. No new virtual machines will power on.

**Correct Answer: B**

**Section:**

#### **QUESTION 19**

You are performing a full state backup operation of the UCS.  
Which two data sets are protected? (Choose two)

- A. System configuration
- B. Server backup data
- C. Logical configuration
- D. Configuration XML

**Correct Answer: A, C**

**Section:**

#### **QUESTION 20**

After a power failure, the Fabric Interconnects have lost their configuration and must be restored from a previous UCS backup operation.  
Which type of configuration would be used to resolve this problem?

- A. System configuration
- B. Logical configuration
- C. All configuration
- D. Full state

**Correct Answer: D**

**Section:**

#### **QUESTION 21**

You attempt to activate a port on an MDS using the port-license acquire command and the switch returns the message "port activation license not available".  
How would you determine if you have sufficient licenses?

- A. Run the show license command to display the available license information.
- B. Run the show run command to see the license configuration.
- C. Run the show port-resources module command to display the available port resources in a module.
- D. Run the show port-license command to display the available port activation licenses.

**Correct Answer: D**

**Section:**

#### **QUESTION 22**

While monitoring your PowerPath/VE licensing, you notice that some of your hosts are no longer licensed.  
In this scenario, which statement is correct?

- A. PowerPath will continue to function but will not allow more devices to be configured.

- B. PowerPath will route all traffic down one path, disabling the alternative path.
- C. PowerPath will switch to round robin mode but will not allow more devices to be configured.
- D. PowerPath will continue to route traffic but will lose some management features.

**Correct Answer: D**

**Section:**

#### **QUESTION 23**

How do you create a log bundle for the Nexus 1000V virtual switch module (VSM)?

- A. Use the vCenter client to generate a VMware support bundle.
- B. Execute the vem-support all command from the shell on each ESXi host.
- C. Run the show tech-support vs > bootflash:techsupport.log command from the VSM shell.
- D. Use the Java-based Nexus 1000V log bundle creator on the element manager.

**Correct Answer: C**

**Section:**

#### **QUESTION 24**

While troubleshooting a VCE Vision™ Intelligent Operations problem, you notice that the rsyslog file was empty. Which action should you perform first?

- A. Start an SSH session to the VCE Vision™ software system library and verify the FAgent status.
- B. Log on to the vSphere Web Client and verify that the VCE Vision software system library was installed.
- C. Start an SSH session to the VCE Vision software system library and verify the service status.
- D. Log on to the Vision GUI, and run a compliance report.

**Correct Answer: C**

**Section:**

#### **QUESTION 25**

During a routine audit, you notice that the VCE Vision™ Intelligent Operations health score is 72 and highlighted in yellow. Where is this information found?

- A. Compliance Scan
- B. Event tab
- C. login banner
- D. Vblock®.xml file

**Correct Answer: A**

**Section:**

#### **QUESTION 26**

A physical server in the Vblock® System 200 is experiencing intermittent problems. What does VCE recommend to log the events?

- A. Add a network time protocol (NTP) server to the Cisco UCS instance.



- B. Use VCE Vision™ Intelligent Operations to monitor and alert all connectivity issues.
- C. Use SNMP and e-mail all severity one alerts.
- D. Add an SNMP server using Cisco Integrated Management Controller.

**Correct Answer: D**

**Section:**

#### **QUESTION 27**

You have a problem with a Vblock® System 340 VNX array. While talking with support, they request that you generate an SP Collect and send it to them. How do you collect this data?

- A. Log into USM and send diagnostics data to VCE Vision™ Intelligent Operations.
- B. Log into USM, click on Diagnostics and Capture Diagnostics Data.
- C. Log into USM, generate SP Collect, and get SP Collect for each SP.
- D. Log into USM, Capture Diagnostic Data, and get capture diagnostic data.

**Correct Answer: B**

**Section:**

#### **QUESTION 28**

By not deleting their snapshots, a customer filled a data store to 100% capacity preventing other VMs sharing the same data store from starting or restarting. Which vCenter operation would have helped identify this problem?

- A. Use the vCenter VCE Vision™ Intelligent Operations monitoring plugin.
- B. Use the vCenter alarm set to trigger a reporting action once the data store reached capacity.
- C. Use the vCenter thin to thick vmdks to force a static quota.
- D. Use vCenter Orchestrator to create a new data store and migrate when needed.

**Correct Answer: B**

**Section:**

#### **QUESTION 29**

An application can no longer access its allocated storage on a Vblock® System 340. According to Cisco MDS troubleshooting guidelines, which action would be used to investigate the problem?

- A. Enable system message logging.
- B. Use Unisphere to view fabric problems.
- C. Determine if the host has ever been able to see VNX storage.
- D. Determine if the host recognizes any LUNs in the VNX storage system.

**Correct Answer: D**

**Section:**

#### **QUESTION 30**

Which two components are part of the Vblock® System infrastructure? (Choose two)

- A. Network switches

- B. Production application software
- C. Storage array
- D. Database software

**Correct Answer: B, D**

**Section:**

**QUESTION 31**

Which management software is used to administer physical blade servers on VCE Vblock® Systems?

- A. UCSM
- B. Unisphere
- C. DCNM
- D. vCenter

**Correct Answer: A**

**Section:**

**Explanation:**

Corrected.

**QUESTION 32**

Which network configuration is often used to isolate network traffic?

- A. FTP
- B. SSH
- C. VLAN
- D. TCP

**Correct Answer: C**

**Section:**

**QUESTION 33**

What is the set of configured disks used to safe guard data accessed by thin devices?

- A. storage pool
- B. server pool
- C. MAC address pool
- D. UUID pool

**Correct Answer: A**

**Section:**

**QUESTION 34**

You are making some changes in connectivity in your network layer and are concerned about the port licensing on your Fabric Interconnect. If you disable a port, which statement is true?

- A. You must log into the Fabric Interconnect to de-authorize the license assigned to that port.

- B. You must edit the license file on the Fabric Interconnect to specify which license is now free.
- C. The licenses are dynamically added back to the license pool.
- D. You must force a license rescan on your UCS to recapture the license.

**Correct Answer: C**

**Section:**

#### **QUESTION 35**

You are working with VCE Support and are asked to send the complete support log bundle for your MDS switch. Which statement describes what you should do?

- A. Connect to the MDS switch and run the show accounting log command.
- B. Connect to the MDS switch and run the show flogi command.
- C. Connect to the MDS switch and run the show tech-support detail command.
- D. Connect to the MDS switch and run the show zone analysis vsan command.

**Correct Answer: C**

**Section:**

#### **QUESTION 36**

What is the interface used to administer physical servers in a Vblock® System 200?

- A. CIMC
- B. DCNM
- C. UCSM
- D. Unisphere

**Correct Answer: A**

**Section:**

#### **QUESTION 37**

You need to reconfigure storage on your VNX and you do not want to disrupt your ESXi host. This activity will require rebuilding some of the LUNs that are currently presented to ESXi hosts. Which action must be performed on vCenter to meet this requirement?

- A. Unmount data stores associated with LUNs that will be reconfigured.
- B. Rename data stores associated with LUNs that will be reconfigured.
- C. Enable storage I/O control on data stores associated with LUNs that will be reconfigured.
- D. Upgrade the data store to VMFS5.

**Correct Answer: A**

**Section:**

#### **QUESTION 38**

You are asked to permanently shrink a vSphere cluster from five nodes to four nodes. You confirm that all five ESXi hosts are at less than 20% utilization. You also confirm that VMware DRS is properly configured and running on the cluster.

Which procedure should be followed to shrink the cluster?

- A. In UCSM, stop the server then delete the service profile; in vCenter, delete the host.
- B. In vCenter, put the ESXi host into maintenance mode, remove the host from the cluster; in UCSM, stop the server then delete the service profile.
- C. In vCenter, put the ESXi host into maintenance mode, remove the host from the cluster; in UCSM, stop the server then disconnect the service profile.
- D. In UCSM, stop the server then delete the service profile; in vCenter, put the ESXi host into maintenance mode, remove the host from the cluster.

**Correct Answer: B**

**Section:**

#### **QUESTION 39**

You need to clean up your UCS environment. You discover that you have old UCS software bundles in your UCS system. You want to delete these bundles from the system, but not create faults. Which action should you perform prior to deletion?

- A. Delete any host firmware packages that use those bundles.
- B. Change your reboot policy to User Ack.
- C. Ensure that there are no pending activities.
- D. Ensure that no components have this firmware in their backup versions.

**Correct Answer: A**

**Section:**

#### **QUESTION 40**

You are managing a Vblock® System and have been asked to prove the Vblock® System is using the most recent firmware version across all components in their environment. Which VCE Vision™ Intelligent Operations feature would you use to accomplish this task?

- A. Health Monitor
- B. Compliance Checker
- C. System Library
- D. Adapter for vCenter Operations Manager

**Correct Answer: B**

**Section:**

#### **QUESTION 41**

Which management application is used to discover the Cisco MDS switches in the network?

- A. UCSM
- B. UIM
- C. Unisphere
- D. DCNM

**Correct Answer: D**

**Section:**

#### **QUESTION 42**

An existing customer wants to add external IP addresses to its management pool. Which element manager would you recommend?

- A. Data Center Network Manager
- B. Unisphere
- C. VCE Vision™ Intelligent Operations
- D. UCSM

**Correct Answer: D**

**Section:**

#### **QUESTION 43**

Your company wants to change a new host firmware package in a service profile. What must you consider before completing this task?

- A. Host firmware packages do not have adapter settings.
- B. Host firmware packages can only be used in one service profile.
- C. Host firmware package settings can change network settings.
- D. Host firmware package changes might cause the blade to reboot.

**Correct Answer: D**

**Section:**

#### **QUESTION 44**

VCE has just deployed a Vblock® System in your data center and you want to validate the system's health. Which two components would you monitor using UCSM to accomplish this task? (Choose two)

- A. Port licensing
- B. Fabric Interconnects
- C. Server blades
- D. Chassis back plane

**Correct Answer: B, C**

**Section:**

#### **QUESTION 45**

While managing a Vblock® System 340 you monitor the system for optimal performance configuration. Which VNX storage performance characteristic should be viewed to confirm expected storage behavior?

- A. Verify that mission critical data is accessed from EFD.
- B. Verify that the workload is balanced across the storage processors.
- C. Verify that the storage processors are configured with the same amount of cache.
- D. Verify that small and large I/Os are targeted to different storage processors.

**Correct Answer: B**

**Section:**

**Explanation:**

Super valid.

#### **QUESTION 46**

An application owner complains about poor application performance since the application was moved to the Vblock® System 340. Your Vmware administrator determines that the storage used for this application has a very high latency.

Which step would you take to gather information from your storage array to send to EMC technical support?

- A. Generate a diagnostic file for each storage processor in Unisphere.
- B. Generate a diagnostic file for each block pool in Unisphere.
- C. Create a support bundle for each RAID group in Unisphere.
- D. Create a support bundle for the FAST cache in Unisphere.

**Correct Answer: A**

**Section:**

#### **QUESTION 47**

Which two elements are required to configure a SAN boot policy? (Choose two)

- A. boot target naai ID
- B. boot target CHAP authentication
- C. boot target LUN
- D. boot target WWPN

**Correct Answer: C, D**

**Section:**

#### **QUESTION 48**

You want to modify settings in the UCS.

To which IP address should you point your browser?

- A. the IP address of UCS fabric extender B
- B. the IP address of UCS fabric extender A
- C. the IP address of the Vblock® System management switch
- D. the IP address of the UCS Manager Cluster

**Correct Answer: D**

**Section:**

#### **QUESTION 49**

What are two reasons a Vblock® System administrator would use the Release Certification Matrix? (Choose two)

- A. Introduce new component support.
- B. Document end-of-life component support.
- C. Upgrade software levels to resolve problems.
- D. Identify known problems with specific code revisions.

**Correct Answer: A, C**

**Section:**

#### **QUESTION 50**

A Nexus switch requires a code upgrade to be compatible with other features in the Vblock® System 340.  
What would you do to ensure that the correct code version is used?

- A. Generate a benchmark report.
- B. Consult with the on-line help.
- C. Upgrade to the latest version.
- D. Consult the Release Certification Matrix.

**Correct Answer: D**

**Section:**

**QUESTION 51**

A customer is interested in executing the VCE Vision™ Intelligent Operations Compliance Checker.  
What is required to access the local RCM data?

- A. CAS authentication credentials for the administrator
- B. vSphere administrator credentials
- C. Administrator authentication to VCE Vision™ Intelligent Operations
- D. Full access rights to the RCM

**Correct Answer: A**

**Section:**