

F5.201.by.Amoy.133q

Number: 201
Passing Score: 800
Time Limit: 120
File Version: 4.0

Exam Code: 201

Exam Name: TMOS Administration



Exam A

QUESTION 1

A configuration change is made on the standby member of a device group.

What is displayed as 'Recommended Action' on the Device Management Overview screen?

- A. Force active member of device group to standby
- B. Activate device with the most recent configuration
- C. Synchronize the active member configuration to the group.
- D. Synchronize the standby member configuration to the group

Correct Answer: D

Section:

QUESTION 2

What should the 816-IP Administrator provide when opening a new ticket with F5 Support?

- A. bigip.license file
- B. QKViewfile
- C. Device root password
- D. SSL private keys

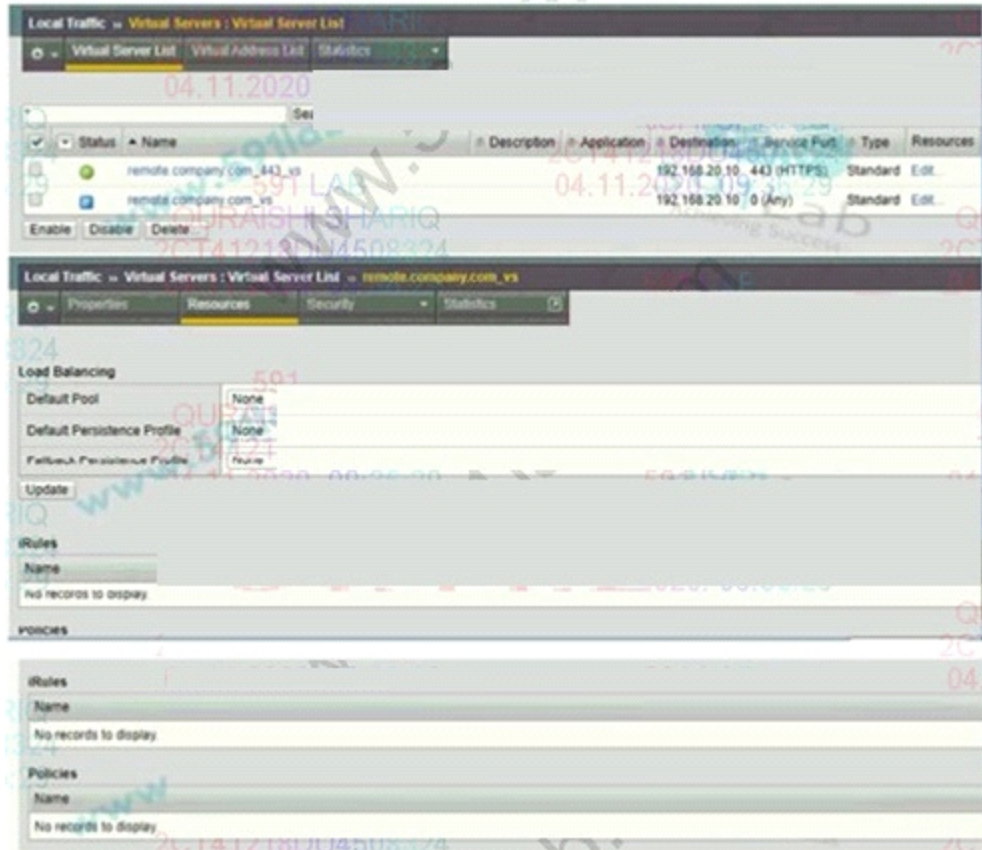
Correct Answer: B

Section:

QUESTION 3

Refer to the exhibit.





A user notifies the BIG-IP Administrator that <http://remote> company.com is NOT accessible. Remote access to company resources must be encrypted. What should the BIG-IP Administrator do to fix the issue?



- A. Change the Listening Port on remote.company.com_vs to Port 80
- B. Add a Pool to the Virtual Server remote.company.com_VS
- C. Add an iRule to remote.company.com_vs to redirect Traffic to HTTPS
- D. Change the Type of the Virtual Server remote.company.com_vs to Forwarding Requiring all traffic to be HTTPS access requires HTTP requests to be redirected directly to HTTPS.

Correct Answer: C
Section:

QUESTION 4

Which process or system can be monitored by the BIG-IP system and used as a failover trigger in a redundant pair configuration?

- A. bandwidth utilization
- B. duplicate IP address
- C. CPU utilization percentage
- D. VLAN communication ability

Correct Answer: D
Section:

QUESTION 5

Assuming there are open connections through an active system's NAT and a fail over occurs, by default, what happens to those connections?

VS_Web_Pool Settings		Web_Pool Parameters	
Destination:	10.10.20.100:80	Load Balancing:	Least Connections
Profiles:	TCP, HTTP	Priority Group:	
iRules:	None	Activation:	Less Than 2
Default Pool:	Web_Pool	Monitor:	Custom_HTTP
Persistence:	None		

Web_Pool Member Statistics and Settings					
Member	Member Ratio	Member Priority	Outstanding Requests	Current Connections	Status
A: 172.16.20.1:80	3	5	4	56	Unavailable
B: 172.16.20.2:80	3	4	4	42	Available
C: 172.16.20.3:80	3	5	4	54	Unavailable
D: 172.16.20.4:80	1	3	1	22	Available
E: 172.16.20.5:80	1	1	1	18	Available

- A. All open connections will be lost.
- B. All open connections will be maintained.
- C. The 'Mirror' option must be chosen on the NAT and the setting synchronized prior to the connection establishment.
- D. Longlived connections such as Telnet and FTP will be maintained while shortlived connections such as HTTP will be lost.
- E. All open connections are lost, but new connections are initiated by the newly active BIG IP, resulting in minimal client downtime.

Correct Answer: B

Section:

QUESTION 6

A virtual server is defined per the charts. The last five client connections were to members C, D, A, B, B. Given the conditions shown in the above graphic, if a client with IP address 205.12.45.52 opens a connection to the virtual server, which member will be used for the connection.

VS_Web_Pool Settings		Web_Pool Parametrs	
Destination:	10.10.20.100:80	Load Balancing:	Least Connections
Profiles:	TCP, HTTP	Priority Group Activation:	Less Than 2
iRules:	None	Monitor:	Custom_HTTP
Default Pool:	Web_Pool		
Persistence:	None		

Web_Pool Member Statistic and Settings					
Member	Member Ratio	Member Priority	Outstanding Requests	Current Connections	Status
A: 172.16.20.1:80	3	5	4	56	Unavailable
B: 172.16.20.2:80	3	4	4	42	Available
C: 172.16.20.3:80	3	5	4	54	Unavailable
D: 172.16.20.4:80	1	3	1	22	Available
E: 172.16.20.5:80	1	1	1	18	Available

- A. 172.16.20.1:80
- B. 172.16.20.2:80
- C. 172.16.20.3:80
- D. 172.16.20.4:80
- E. 172.16.20.5:80

Correct Answer: D
Section:

QUESTION 7

Under what condition must an appliance license be reactivated?

- A. Licenses only have to be reactivated for RMAs no other situations.
- B. Licenses generally have to be reactivated during system software upgrades.
- C. Licenses only have to be reactivated when new features are added (IPv6, Routing Modules, etc) no other situations.
- D. Never. Licenses are permanent for the platform regardless the version of software installed.

Correct Answer: B

Section:

QUESTION 8

Which three methods can be used for initial access to a BIG-IP system? (Choose three.)

- A. CLI access to the serial console port
- B. SSH access to the management port
- C. SSH access to any of the switch ports
- D. HTTP access to the management port
- E. HTTP access to any of the switch ports
- F. HTTPS access to the management port
- G. HTTPS access to any of the switch ports

Correct Answer: A, B, F

Section:

QUESTION 9

A node is a member of various pools and hosts different web applications. If a web application is unavailable, the BIG-IP appliance needs to mark the pool member down for that application pool. What should a BIG-IP Administrator deploy at the pool level to accomplish this?

- A. A UDP monitor with a custom interval/timeout
- B. A combination of ICMP + TCP monitor
- C. An HTTP monitor with custom send/receive strings
- D. A TCP monitor with a custom interval/timeout



Correct Answer: C

Section:

Explanation:

Requiring all traffic to be HTTPS access requires HTTP requests to be redirected directly to HTTPS.

QUESTION 10

A Standard Virtual Server configured for an application reports poor network performance. This application is accessed mainly from computers on the Internet. What should the BIG-IP Administrator configure on the Virtual Server to achieve better network performance?

- A. Protocol Profile (Client) with f5-tcp-wan and Protocol Profile (Server) with f5-tcp-lan
- B. Protocol Profile (Client) with f5-tcp-lan
- C. Protocol Profile (Client) with f5-tcp-lan and Protocol Profile (Server) with f5-tcp-wan
- D. Protocol Profile (Client) with f5-tcp-optimized

Correct Answer: A

Section:

QUESTION 11

Refer to the exhibit.

Load Balancing

Load Balancing Method: Round Robin

Priority Group Activation: Less than 2 Available Member(s)

Update

Current Members

Status	Member	Address	Ratio	Priority Group	Connection Limit	Partition /
<input checked="" type="checkbox"/>	10.21.0.101:80	10.21.0.101	10	4 (Active)	0	Common
<input checked="" type="checkbox"/>	10.21.0.102:80	10.21.0.102	10	6 (Active)	0	Common
<input type="checkbox"/>	10.21.0.103:80	10.21.0.103	10	1 (Active)	0	Common
<input checked="" type="checkbox"/>	10.21.0.104:80	10.21.0.104	10	7 (Active)	0	Common
<input checked="" type="checkbox"/>	10.21.0.105:80	10.21.0.105	10	1 (Active)	0	Common

Enable Disable Remove

Which two pool members are eligible to receive new connections? (Choose two)

- A. 10.21.0.102.80
- B. 10.21.0.104.80
- C. 10.21.0.105.80
- D. 10.21.0.101.80
- E. 10.21.0.103.80

Correct Answer: B, D

Section:



QUESTION 12

A Virtual Server uses an iRule to send traffic to pool members depending on the URI. The BIG-IP Administrator needs to modify the pool member in the iRule.

Which event declaration does the BIG-IP Administrator need to change to accomplish this?

- A. CLIENT_ACCEPTED
- B. HTTP_RESPONSE
- C. HTTP_REQUEST
- D. SERVER_CONNECTED

Correct Answer: C

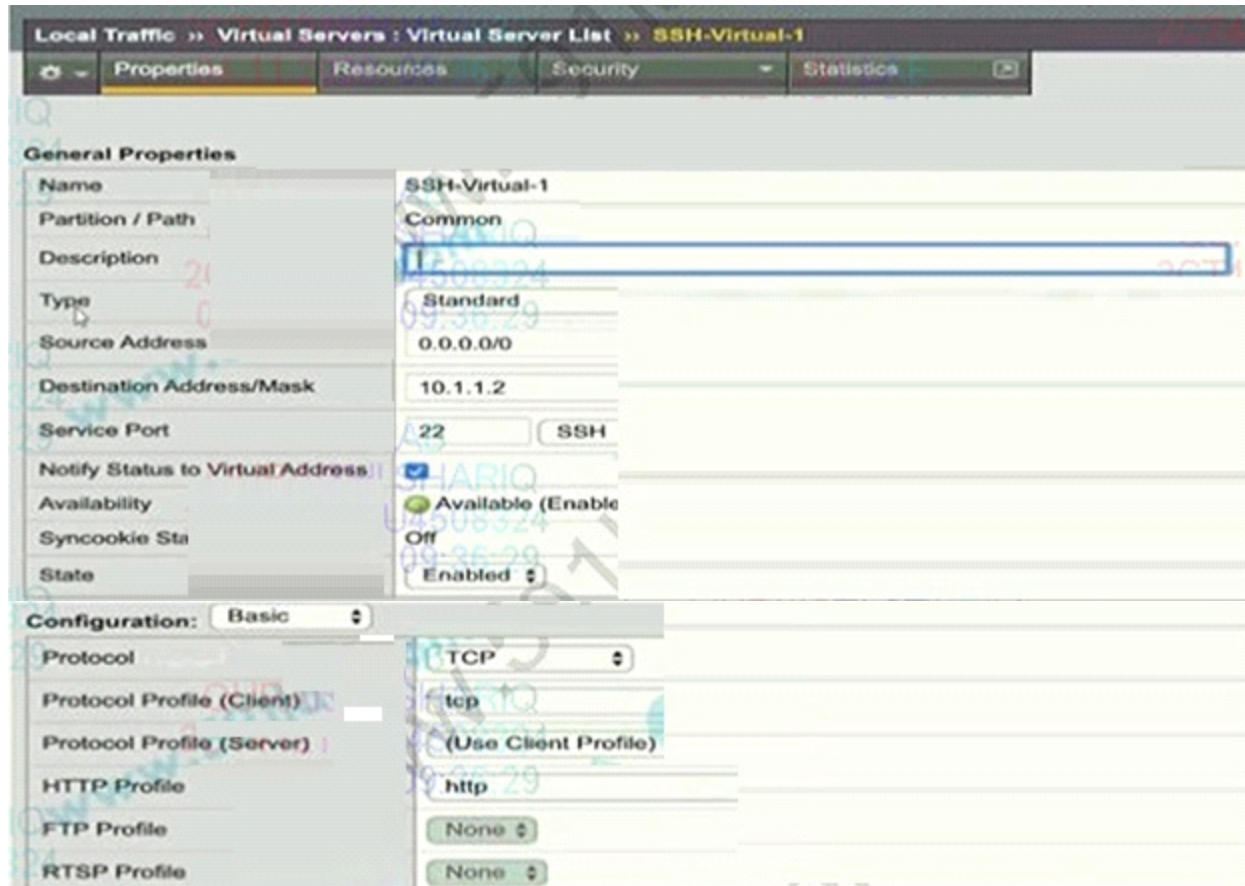
Section:

Explanation:

According to the URI distribution is the category of HTTP requests, need to trigger HTTP_REQUEST event.

QUESTION 13

Refer to the exhibit.



A BIG-IP Administrator creates a new Virtual Server to load balance SSH traffic. Users are unable to log on to the servers. What should the BIG-IP Administrator do to resolve the issue?

- A. Set Protocol to UDP
- B. Set HTTP Profile to None
- C. Set Source Address to 10.1.1.2
- D. Set Destination Addresses/Mask to 0.0.0.0/0

Correct Answer: B
Section:

QUESTION 14

A BIG-IP Administrator uses backend servers to host multiple services per server. There are multiple virtual servers and pools defined, referencing the same backend servers. Which load balancing algorithm is most appropriate to have an equal number of connections on each backend server?

- A. Least Connections (member)
- B. Least Connections (node)
- C. Predictive (member)
- D. Predictive (node)

Correct Answer: B
Section:
Explanation:

The same set of servers provides multiple services, that is, using different ports to provide different services at the same time. The stem requirement is based on server connection balancing, not server + port, so it is node.

QUESTION 15

The BIG-IP Administrator needs to perform a BIG-IP device upgrade to the latest version of TMOS. Where can the administrator obtain F5 documentation on upgrade requirements?

- A. AskF5
- B. DevCentral
- C. Bug Tracker
- D. iHealth

Correct Answer: A

Section:

QUESTION 16

A BIG-IP Administrator makes a configuration change to the BIG-IP device. Which file logs the message regarding the configuration change?

- A. /var/log/messages
- B. /var/log/audit
- C. /var/log/user.log
- D. /var/log/secure

Correct Answer: B

Section:

Explanation:

About audit logging

Audit logging is an optional feature that tags messages whenever a BIG-IP system object, such as a virtual server or a load balancing pool, is configured (that is, created, modified, or deleted). The BIG-IP system logs the messages for these auditing events in the file /var/log/audit

There are three ways that objects can be configured

- * By user action
- * By system action
- * By loading configuration data

Whenever an object is configured in one of these ways, the BIG-IP system logs a message to the audit log

QUESTION 17

In the BIG-IP Configuration Utility, a user requests a single screen view to determine the status of all Virtual Servers and associated pool members, as well as any iRules in use. Where should the BIG-IP Administrator instruct the user to find this view?

- A. Local Traffic > Monitors
- B. Local Traffic > Virtual Servers
- C. Local Traffic > Network Map
- D. Statistics

Correct Answer: C

Section:

Explanation:

Network Map can display vs and its associated pool, pool member, and irule, can be retrieved, and can be quickly linked.

QUESTION 18

What is the status of a pool member when manual resume is enabled and a health check first fails and then passes?

- A. Offline (Disabled)

- B. Offline (Enabled)
- C. Available (Disabled)
- D. Available (Enabled)

Correct Answer: A

Section:

QUESTION 19

Some users who connect to a busy Virtual Server have connections reset by the BIG-IP system. Pool member resources are NOT a factor in this behavior. What is a possible cause for this behavior?

- A. The Connection Rate Limit is set too high
- B. The server SSL Profile has NOT been reconfigured.
- C. The Connection Limit is set too low.
- D. The Rewrite Profile has NOT been configured.

Correct Answer: C

Section:

Explanation:

The topic explains that the connection reset behavior is caused by the vs configuration rather than the server resource problem. The answers B C are all configuration at the service forwarding level. If there is a problem with the configuration, it is all a problem rather than some users. Answer C's Connection Limit will cause a reset behavior when the connection reaches the threshold.

QUESTION 20

New Syslog servers have been deployed in an organization. The BIG-IP Administrator must reconfigure the BIG-IP system to send log messages to these servers.

In which location in the Configuration Utility can the BIG-IP Administrator make the needed configuration changes to accomplish this?

- A. System > Logs > Configuration
- B. System > Configuration > Local Traffic
- C. System > Logs > Audit
- D. System > Configuration > Device

Correct Answer: A

Section:

QUESTION 21

A BIG-IP Administrator needs to restore a UCS file to an F5 device using the Configuration Utility. Which section of the Configuration Utility should the BIG-IP Administrator access to perform this task?

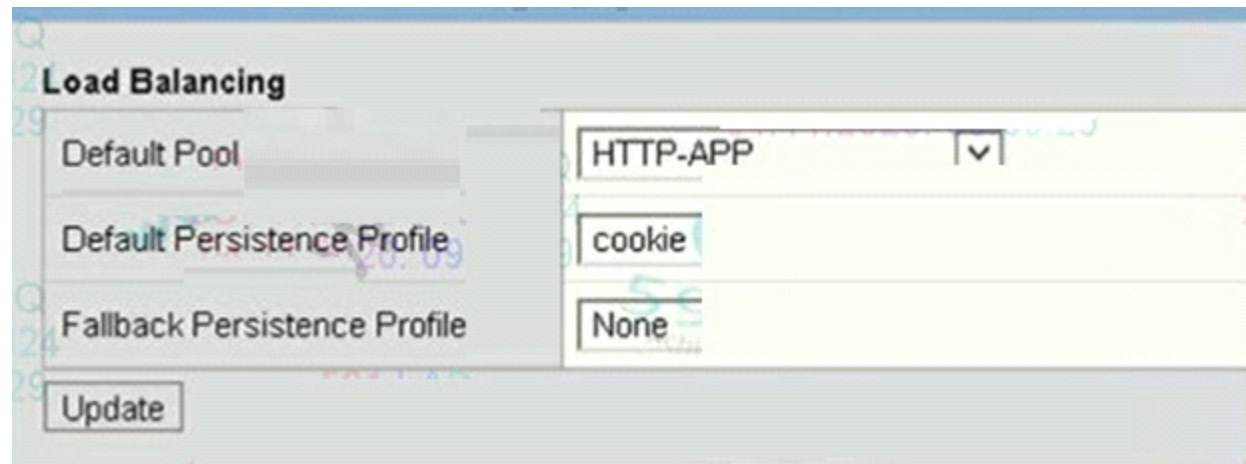
- A. Local Traffic > Virtual Servers
- B. Local Traffic > Policies
- C. System > Archives
- D. System > Configuration

Correct Answer: C

Section:

QUESTION 22

Refer to the exhibit.



Due to a change in application requirements, a BIG-IP Administrator needs to modify the configuration of a Virtual Server to include a Fallback Persistence Profile. Which persistence profile type should the BIG-IP Administrator use for this purpose?

- A. SSL
- B. Hash
- C. Universal
- D. Source Address Affinity

Correct Answer: D

Section:

QUESTION 23

A BIG-IP device sends out the following SNMP trap:

big-ipo.f5.com - bigipExternalLinkChange Link: 1.0 is DOWN

Where in the BIG-IP Configuration utility should the BIG-IP Administrator verify the current status of Link 1,0?

- A. System > Platform
- B. Network > Trunks > Trunk List
- C. Statistics > Performance > System
- D. Network > Interfaces > Interface List 1.0 is a physical interface, you can see the interface status from the physical interface in the network.

Correct Answer: D

Section:

QUESTION 24

Refer to the exhibit.



Filesystem	Size	Used	Avail	Use%	Mounted on
/dev/md4	427M	427M	0	100%	/
none	16G	2.3M	16G	1%	/dev/shm
/dev/md6	3.2G	78M	2.9G	3%	/config
/dev/md5	4.0G	3.1G	696M	82%	/usr
/dev/md7	3.0G	663M	2.2G	24%	/var
/dev/md1	30G	7.6G	21G	27%	/shared
/dev/md2	6.9G	191M	6.4G	3%	/var/log
none	16G	51M	16G	1%	/shared/rrd.1.2
none	16G	21M	16G	1%	/var/tmstat
none	16G	1.6M	16G	1%	/var/run
prompt	4.0M	28K	4.0M	1%	/var/prompt
none	16G	0	16G	0%	/var/loipc

The BIG-IP Administrator is investigating disk utilization on the BIG-IP device. What should the BIG-IP Administrator check next?

- A. Large files on the / file system
- B. Results from the EUD test
- C. Results from the platform diagnostics test
- D. Large files on /usr file system

Correct Answer: A
Section:

QUESTION 25

Which Virtual Server type prevents the use of a default pool?

- A. Performance (Layer 4)
- B. Forwarding (IP)
- C. Performance HTTP
- D. Standard

Correct Answer: B
Section:

Explanation:
Forwarding (IP) cannot be associated with the pool.

QUESTION 26

A BIG-IP Administrator needs to view the CPU utilization of a particular Virtual Server. Which section of the Configuration Utility should the administrator use for this purpose?

- A. Statistics > Module Statistics > Local Traffic > Virtual Addresses
- B. Statistics > Module Statistics > Traffic Summary
- C. Statistics > Analytics > Process CPU Utilization
- D. Statistics > Module Statistics > Local Traffic > Virtual Servers



Correct Answer: D

Section:

QUESTION 27

A BIG-IP Administrator is setting up a new BIG-IP device. The network administrator reports that the interface has an incompatible media speed. The BIG-IP Administrator needs to change this setting manually. From which location should the BIG-IP Administrator perform this task?

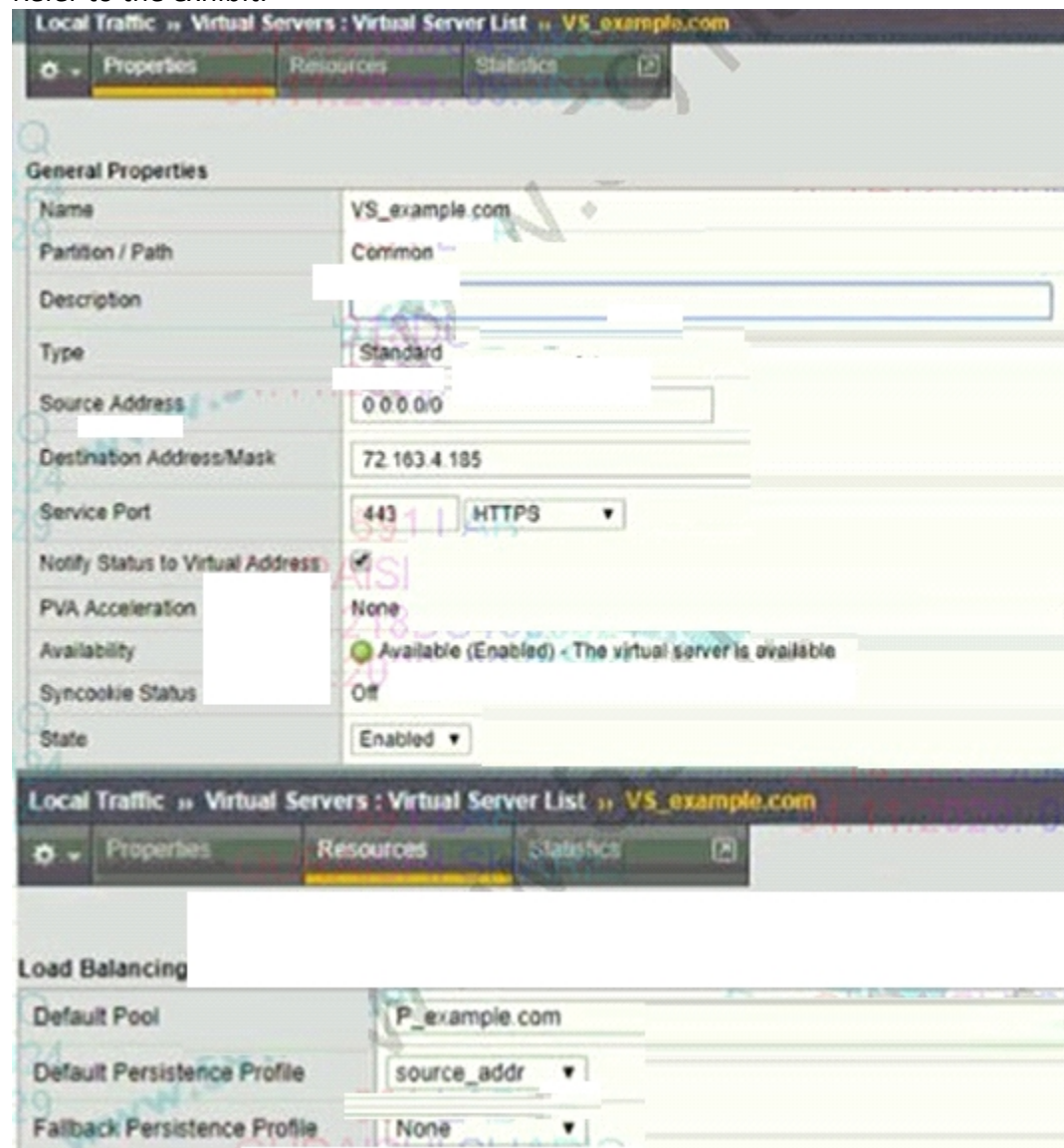
- A. On the Front Console
- B. In the TMOS Shell Command line
- C. In the Configuration Utility, Network > Interface
- D. In the Configuration Utility, System > Configuration

Correct Answer: C

Section:

QUESTION 28

Refer to the exhibit.



vdumps

An organization is reporting slow performance accessing their Intranet website, hosted in a public cloud. All employees use a single Proxy Server with the public IP of 104.219.110.168 to connect to the Internet. What should the BIG-IP Administrator of the Intranet website do to fix this issue?

- A. Change Source Address to 104.219.110.168/32
- B. Change Load Balancing Method to Least Connection
- C. Change Fallback Persistence Profile to source_addr
- D. Change Default Persistence Profile to cookie

Correct Answer: D

Section:

QUESTION 29

A local user account (Users) on the BIG-IP device is assigned the User Manager role. User1 attempts to modify the properties of another account (User2), but the action fails. The BIG-IP Administrator can successfully modify the User2 account.

Assuming the principle of least privilege, what is the correct way to allow User 1 to modify User2 properties?

- A. Move User2 to the same partition as User1
- B. Grant User1 administrative privileges
- C. Move User to the same partition as User2.
- D. Modify the partition access for User 1

Correct Answer: D

Section:

QUESTION 30

A BIG-IP Administrator creates an HTTP Virtual Server using an iApp template. After the Virtual Server is created, the user requests to change the destination IP addresses. The BIG-IP Administrator tries to change the destination IP address from 10.1.1.1 to 10.2.1.1 in Virtual Server settings, but receives the following error:

The application service must be updated using an application management interface

What is causing this error?

- A. The Application Service was NOT deleted before making the IP address change.
- B. The IP addresses are already in use.
- C. The Application Services have Strict Updates enabled.
- D. The IP addresses used are NOT from the same subnet as the Self IP.

Correct Answer: C

Section:

Explanation:

Strict Updates : Indicates whether the application service is tied to the template, so when the template is updated, the application service changes to reflect the updates.

QUESTION 31

A BIG-IP Administrator is informed that traffic on Interface 1.1 is expected to increase over the maximum bandwidth capacity on the link. There is a single VLAN on the Interface. What should the BIG-IP Administrator do to increase the total available bandwidth?

- A. Assign two Interfaces to the VLAN
- B. Set the media speed of Interface 1.1 manually
- C. Create a trunk object with two Interfaces
- D. Increase the MTU on the VLAN using Interface 1.1

Correct Answer: C

Section:

QUESTION 32

A Standard Virtual Server for a web application is configured with Automap for the Source Address Translation option. The original source address of the client must be known by the backend servers. What should the BIG-IP Administrator configure to meet this requirement?

- A. The Virtual Server type as Performance (HTTP)
- B. An HTTP profile to insert the X-Forward-For header
- C. An HTTP Transparent profile
- D. A SNAT Pool with the client IP

Correct Answer: B

Section:

Explanation:

Because it is a web application, you can insert the source IP in the xff field in the http profile.

QUESTION 33

Refer of the exhibit.

```
show /cm device bigip1.local bigip3.local
```

```
CentMgmt::Device: bigip1.local
```

```
-----  
Hostname                bigip3.local  
Mgmt Ip                 172.1.1.233  
Configsync Ip          10.1.1.43  
Mirroring IP           ::  
Mirroring Secondary IP ::  
Failover Multicast IP  ::  
Failover Unicast IP(s) 10.1.1.43  
Device HA State        standby  
Device HA Load Capacity 0  
Device Current Load Factor 0  
Device Next Active Load Factor 0  
Time Delta to Local Device (sec) 12
```

The 816-IP Administrator runs the command shown and observes a device trust issue between BIG-IP devices in a device group. The issue prevents config sync on device bigip3.local.

What is preventing the config sync?

- A. Next Active Load factor is 0 on bigip1.local
- B. Both devices are standby
- C. Next Active Load factor is 1 on bigip1.local



D. Time Delta to local system is 12

Correct Answer: A

Section:

Explanation:

Option A should be bioip3.local?. if choose bigip3.local, you should choose A.

QUESTION 34

A BIG-IP Administrator makes a configuration change to a Virtual Server on the Standby device of an HA pair. The HA pair is currently configured with Auto-Sync Enabled. What effect will the change have on the HA pair configuration?

- A. The change will be undone when Auto-Sync propagates the config to the HA pair.
- B. The change will be propagated next time a configuration change is made on the Active device.
- C. The change will be undone next time a configuration change is made on the Active device.
- D. The change will take effect when Auto-Sync propagates the config to the HA pair.

Correct Answer: D

Section:

QUESTION 35

A user wants to use the iHealth Upgrade Advisor to determine any issues with upgrading TMOS from 13.0 to 13.1. Where can the user generate the QKView to upload to iHealth?

- A. System > Software Management
- B. System > Archives
- C. System > Configuration
- D. System > Support



Correct Answer: D

Section:

QUESTION 36

A BIG-IP Administrator is receiving intermittent reports from users that SSL connections to the BIG-IP device are failing. Upon checking the log files, the BIG-IP Administrator notices the following error message:

```
ere tmm<instance>[]: 01260008:3: SSL transaction (TPS) rate limit reached
```

After reviewing statistics, the BIG-IP Administrator notices there are a maximum of 1200 client-side SSL

TPS and a maximum of 800 server-side SSL TPS.

What is the minimum SSL license limit capacity the BIG-IP Administrator should upgrade to handle this peak?

- A. 2000
- B. 400
- C. 800
- D. 1200

Correct Answer: D

Section:

QUESTION 37

Users report that traffic is negatively affected every time a BIG-IP device fails over. The traffic becomes stabilized after a few minutes.

What should the BIG-IP Administrator do to reduce the impact of future failovers?

- A. Enable Failover Multicast Configuration
- B. Set up Failover Method to HA Order
- C. Configure MAC Masquerade
- D. Configure a global SNAT Listener

Correct Answer: C

Section:

QUESTION 38

A BIG-IP Administrator plans to resolve a non-critical issue with a BIG-IP device in 2 weeks. What Severity level should be assigned to this type of F5 support ticket?

- A. 4
- B. 2
- C. 3
- D. 1

Correct Answer: A

Section:

QUESTION 39

A BIG-IP Administrator adds new Pool Members into an existing, highly utilized pool. Soon after, there are reports that the application is failing to load for some users. What pool level setting should the BIG-IP Administrator check?

- A. Availability Requirement
- B. Allow SNAT
- C. Action On Service Down
- D. Slow Ramp Time

Correct Answer: D

Section:

Explanation:

Option ABC is a global configuration, has nothing to do with the new pool member, select D after excluding

QUESTION 40

Administrative user accounts have been defined on the remote LDAP server and are unable to log in to the BIG-IP device. Which log file should the BIG-IP Administrator check to find the related messages?

- A. /var/log/secure
- B. /var/log/messages
- C. /Nar/log/ltn
- D. /var/log/user.log

Correct Answer: A

Section:



QUESTION 41

Refer to the exhibit.

```
root@(v1161) (cfg-sync Standalone) (Active) (/Common) (tmsh) # 1
ltm virtual http
  destination
  ip-protocol
  last-modified
  mask 255.255.255.255
  pool LAMP12
  profiles (
    http (
      mptcp-max
      stream
    )
  )
  source 0.0.0.0
  translate-address
  translate-port
  vs-index 10
}
root@(v1161) (cfg-sync Standalone) (Active) (/Common) (tmsh) # 1
ltm pool LAMP12
  members (
    10.1.20.11:http {
      address 10.1.20.11
      session monit
      state up
    }
    10.1.20.12:http {
      address 10.1.20.12
      session monit
      state up
    }
  )
}
monitor tcp
```

A BIG-IP Administrator creates a new Virtual Server. The end user is unable to access the page. During troubleshooting, the administrator learns that the connection between the BIG-IP system and server is NOT set up correctly.

What should the administrator do to solve this issue?

- A. Disable Address Translation
- B. Set Address Translation to Auto Map, configure a SNAT pool, and have pool members in the same subnet of the servers
- C. Set Address Translation to SNAT and configure a specific translation address
- D. Set Address Translation to SNAT and have self-IP configured in the same subnet of servers

Correct Answer: C

Section:

Explanation:

The status of the pool can be seen that the members are all up, indicating that the network from F5 to the server is no problem, so there is no need to configure selfip on the same subnet. The monitor is normal but the access is not normal, you have to consider the problem of snat, you can configure automap or configure snat and specify snat ip.

QUESTION 42

Which type of Virtual Server requires the use of a FastL4 profile?

- A. Performance (Layer 4)
- B. Stateless
- C. Performance (HTTP)
- D. Standard

Correct Answer: A

Section:

QUESTION 43

A BIG-IP Administrator plans to upgrade a BIG-IP device to the latest TMOS version. Which two tools could the administrator leverage to verify known issues for the target versions? (Choose two.)

- A. F5 University
- B. F5 Downloads
- C. F5 End User Diagnostics (EUD)
- D. FSiHealth
- E. F5 Bug Tracker

Correct Answer: D, E

Section:

Explanation:

F5 University -- F5 learning materials

F5 Downloads - iso download page

F5 End User Diagnostics (EUD) -- Hardware detection

QUESTION 44

The interface 1.1 of the BIG-IP device has been connected to a link dedicated to traffic on VLAN 120. What should the BIG-IP Administrator do to receive traffic from the VLAN?

- A. Create a new VLAN object and set Customer Tag to 120
- B. Create a new VLAN object and assign the interface 1.1 untagged
- C. Create a new trunk object with interface 1.1 assigned
- D. Create a new trunk object and assign it to the VLAN



Correct Answer: B

Section:

QUESTION 45

A BIG-IP Administrator needs to determine which pool members in a pool have been manually forced offline and are NOT accepting any new traffic. Which status icon indicates this?

A)



B)



C)



D)



A. Option

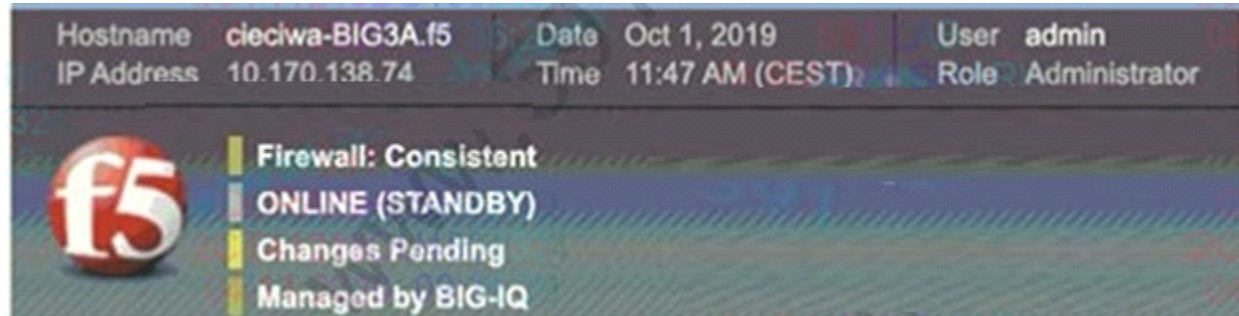
- B. Option
- C. Option
- D. Option

Correct Answer: A

Section:

QUESTION 46

Refer to the exhibit.



The BIG-IP Administrator has modified an iRule on one device of an HA pair. The BIG-IP Administrator notices there is NO traffic on the BIG-IP device in which they are logged into. What should the BIG-IP Administrator do to verify if the iRule works correctly?

- A. Push configuration from this device to the group and start to monitor traffic on this device
- B. Pull configuration to this device to the cluster and start to monitor traffic on this device
- C. Log in to the other device in the cluster, push configuration from it, and start to monitor traffic on that device
- D. Log in to the other device in the cluster, pull configuration to it, and start to monitor traffic on that device

Correct Answer: D

Section:

Explanation:

The device in the picture is a standby machine, of course there is no traffic, you need to log in to the host, and then pull the configuration to the host.

QUESTION 47

A BIG-IP Administrator discovers malicious brute-force attempts to access the BIG-IP device on the management interface via SSH. The BIG-IP Administrator needs to restrict SSH access to the management interface. Where should this be accomplished?

- A. System > Configuration
- B. Network > Interfaces
- C. Network > Self IPs
- D. System > Platform

Correct Answer: D

Section:

QUESTION 48

A BIG-IP Administrator is creating a new Trunk on the BIG-IP device. What objects should be added to the new Trunk being created?

- A. Interfaces
- B. Network routes

- C. VLANS
- D. IP addresses

Correct Answer: A

Section:

Explanation:

trunk is a portchannel, you need to add a physical interface.

QUESTION 49

Interface 1.2 on a BIG-IP VE has a status of UNINITIALIZED. What is the reason for this status?

- A. Interface 1.2 has been added to a trunk.
- B. Interface 1.2 has NOT been assigned to a VLAN.
- C. Interface 1.2 has been disabled.
- D. No default route has been created.

Correct Answer: B

Section:

Explanation:

trunk is a portchannel, you need to add a physical interface.

QUESTION 50

A BIG-IP Administrator is unable to connect to the management interface via HTTPS. What is a possible reason for this issue?

- A. The port lockdown setting is configured to Allow None.
- B. An incorrect management route is specified.
- C. The IP address of the device used to access the management interface is NOT included in the 'P Allow' list in the Configuration Utility.
- D. The IP address of the device used to access the management interface is NOT included in the 'httpd Allow' list in the CLI.

Correct Answer: D

Section:

QUESTION 51

A BIG-IP Administrator needs to purchase new licenses for a BIG-IP appliance.

The administrator needs to know if a module is licensed and the memory requirement for that module.

Where should the administrator view this information in the System menu?

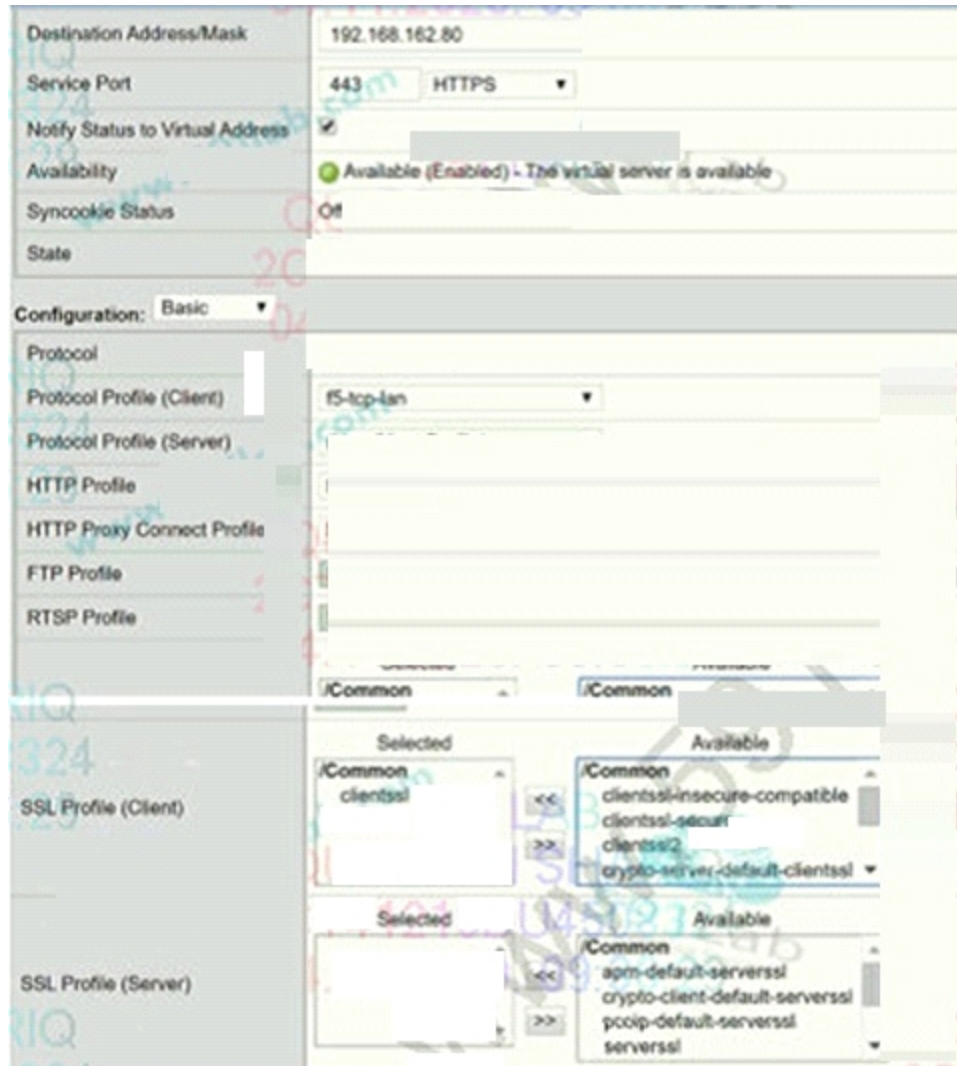
- A. Resource Provisioning
- B. Configuration > Device
- C. Software Management
- D. Configuration >OVSDB

Correct Answer: A

Section:

QUESTION 52

Refer to the exhibit.



A BIG-IP Administrator needs to deploy an application on the BIG-IP system to perform SSL offload and re-encrypt the traffic to pool members. During testing, users are unable to connect to the application. What must the BIG-IP Administrator do to resolve the issue?

- A. Remove the configured SSL Profile (Client)
- B. Configure Protocol Profile (Server) as splitsession-default-tcp
- C. Enable Forward Proxy in the SSL Profile (Client)
- D. Configure an SSL Profile (Server)

Correct Answer: D

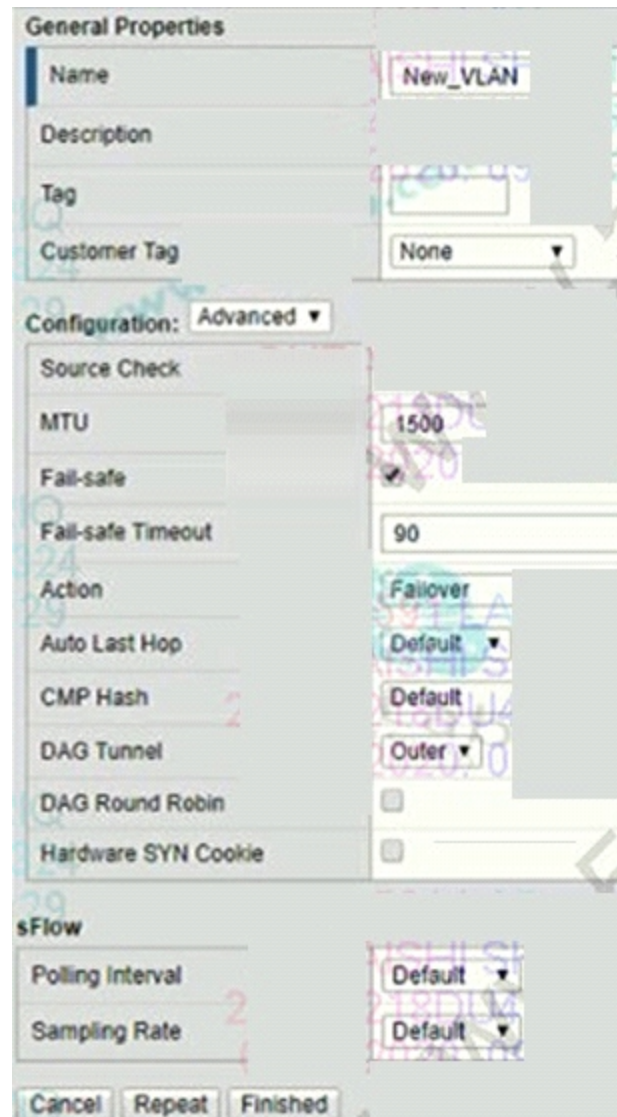
Section:

Explanation:

According to the requirements of the subject, the client and server must be configured with ssl profile.

QUESTION 53

Refer to the exhibit.



A BIG-IP Administrator configures a new VLAN on an HA pair of devices that does NOT yet have any traffic. This action causes the assigned traffic group to fail over to the standby device. Which VLAN setting should be changed to prevent this issue?

- A. Auto Last Hop
- B. Fail-safe
- C. Customer Tag
- D. Source Check

Correct Answer: B

Section:

QUESTION 54

During a high-demand traffic event, the BIG-IP Administrator needs to limit the number of new connections per second allowed to a Virtual Server. What should the administrator apply to accomplish this task?

- A. An HTTP Compression profile to the Virtual Server
- B. A connection rate limit to the Virtual Server
- C. A connection limit to the Virtual Server
- D. A OneConnect profile to the Virtual Server

Correct Answer: B

Section:

QUESTION 55

Users are unable to reach an application. The BIG-IP Administrator checks the Configuration Utility and observes that the Virtual Server has a red diamond in front of the status. What is causing this issue?

- A. All pool members are down.
- B. The Virtual Server is receiving HTTPS traffic over HTTP virtual.
- C. The Virtual Server is disabled.
- D. All pool members have been disabled.

Correct Answer: A

Section:

QUESTION 56

A BIG-IP Administrator is conducting maintenance on one BIG-IP appliance in an HA Pair. Why should the BIG-IP Administrator put the appliance into FORCED_OFFLINE state?

- A. To preserve existing connections to Virtual Servers and reduce the CPU load
- B. To allow new connections to Virtual Servers and ensure the appliance becomes active
- C. To terminate connections to the management IP and decrease persistent connections
- D. To terminate existing connections to Virtual Servers and prevent the appliance from becoming active

Correct Answer: D

Section:



QUESTION 57

An ecommerce company is experiencing latency issues with online shops during Black Friday's peak season.

The BIG-IP Administrator detects an overall high CPU load on the BIG-IP device and wants to move the top utilized Virtual Servers to a dedicated BIG-IP device.

Where should the BIG-IP Administrator determine the problematic Virtual Servers?

- A. System > Plattform
- B. Local Traffic > Virtual Servers > Virtual Server List
- C. Local Traffic > Network Map
- D. Statistics > Module Statistics > Local Traffic > Virtual Servers

Correct Answer: D

Section:

QUESTION 58

A set of servers is used for an FTP application as well as an HTTP website via separate BIG-IP Pools. The server support team reports that some servers are receiving a lot more traffic than others.

Which Load Balancing Method should the BIG-IP Administrator apply to even out the connection count?

- A. Ratio (Member)
- B. Least Connections (Member)
- C. Least Connections (Node)
- D. Ratio (Node)

Correct Answer: C

Section:

Explanation:

The connection is required to be balanced, and the unit is the server and the application port is the unit, so it is node.

QUESTION 59

A BIG-IP Administrator reviews the Plane CPU Usage performance chart and discovers a high percentage of Control Plane utilization.

Which type of traffic does this indicate a higher usage of?

- A. Administrative
- B. Tunnel
- C. Accelerated ,
- D. Application

Correct Answer: A

Section:

QUESTION 60

One of the two members of a device group has been decommissioned. The BIG-IP Administrator tries to delete the device group, but is unsuccessful.

Prior to removing the device group, which action should be performed?

- A. Disable the device group
- B. Remove all members from the device group
- C. Remove the decommissioned device from the device group
- D. Make sure all members of the device group are in sync



Correct Answer: B

Section:

QUESTION 61

A BIG-IP Administrator is configuring an SSH Pool with five members.

Which Health Monitor should be applied to ensure that available pool members are monitored accordingly?

- A. https
- B. udp
- C. http
- D. tcp

Correct Answer: D

Section:

QUESTION 62

Refer to the exhibit.

<input checked="" type="checkbox"/>	Status	Member	Address	Service Port
<input type="checkbox"/>		10.200.50.210:80	10.200.50.210	80
<input type="checkbox"/>		10.200.50.210:21	10.200.50.210	21
<input type="checkbox"/>		10.200.50.211:443	10.200.50.211	443
<input type="checkbox"/>		10.200.50.211:22	10.200.50.211	22

Enable Disable Force Offline Remove

A BIG-IP Administrator needs to configure health monitors for a newly configured server pool named Pool_B. Which health monitor settings will ensure that all pool members will be accurately marked as available or unavailable?

- A. HTTPS, HTTP, FTP, and ICMP, with the Availability Requirement of all health monitors
- B. HTTPS, HTTP, FTP, and SSH, with the Availability Requirement of at least one monitor
- C. HTTPS and HTTP with the Availability Requirement of at least one health monitor
- D. HTTPS, HTTP, FTP, and SSH with the Availability Requirement of all health monitors

Correct Answer: B

Section:

Explanation:

From the port, the four members are HTTP, FTP, HTTPS, and SSH applications. If you want to monitor at the same time, you must configure at least one.

QUESTION 63

A BIG-IP Administrator is configuring a pool with members who have differing capabilities. Connections to pool members must be load balanced appropriately. Which load balancing method should the BIG-IP Administrator use?

- A. Least Sessions
- B. Least Connections (member)
- C. Fastest (node)
- D. Weighted Least Connections (member)

Correct Answer: D

Section:

QUESTION 64

The BIG-IP appliance fails to boot. The BIG-IP Administrator needs to run the End User Diagnostics (EUD) utility to collect data to send to F5 Support. Where can the BIG-IP Administrator access this utility?

- A. Console Port
- B. Internal VLAN interface
- C. External VLAN interface
- D. Management Port

Correct Answer: A

Section:

QUESTION 65

A BIG-IP Administrator configures a node with a standard icmp Health Monitor. The Node shows as DOWN although the Backend Server is configured to answer ICMP requests. Which step should the administrator take next to find the root cause of this issue?

- A. Run a curl Run a qkview
- B. Run a qkview
- C. Runatcpdump
- D. Runanssldump

Correct Answer: C

Section:

QUESTION 66

A BIG-IP Administrator needs to install a HotFix on a standalone BIG-IP device, which has HD1.1 as the Active Boot Location. The BIG-IP Administrator has already re-activated the license and created an UCS archive of the configuration. In which sequence should the BIG-IP Administrator perform the remaining steps?

- A. Install HotFix in HD 1.1, Reboot the BIG-IP device. Install UCS Archive
- B. Install HotFix in HO 1.2, Install base Image in HD 1.2, Activate HD1.2
- C. Install base Image in HD1.2, Install HotFix in HD1.2, Activate HD 1.2
- D. Activate HD 1.2, Install base image in HD 1.2. Install HotFix in HD 1.2

Correct Answer: C

Section:

QUESTION 67

For a given Virtual Server, the BIG-IP must perform SSL Offload and negotiate secure communication overTLSv1.2only. What should the BIG-IP Administrator do to meet this requirement?

- A. Configure a custom SSL Profile (Client) and select no TLSv1 in the options list
- B. Configure a custom SSL Profile (Client) with a custom TLSV1.2 cipher string
- C. Configure a custom SSL Profile (Server) and select no TLSv1 in the options list
- D. Configure a custom SSL Profile (Server) with a custom TLSV1.2 cipher string

Correct Answer: B

Section:

Explanation:

no TLSv1 only disables TLS1.0, TLS1.1 is still used and does not meet the requirements.

QUESTION 68

The BIG-IP Administrator generates a qkview using 'qkview -SO' and needs to transfer the output file via SCP.

Which directory contains the output file?

- A. /var/log



- B. /var/tmp
- C. /var/local
- D. /var/config

Correct Answer: B

Section:

QUESTION 69

Refer to the exhibit.

Status	Name	Application	Destination	Service Port	Type	Resources	Partition / Path
✓	nfs		10.10.10.0/24	80 (HTTP)	Standard	Edit	Common
✓	vs_ftp		10.10.10.1	21 (FTP)	Standard	Edit	Common
✓	vs_http		10.10.10.1	80 (HTTP)	Standard	Edit	Common
✓	vs_https		10.10.10.1	443 (HTTPS)	Standard	Edit	Common

How many nodes are represented on the network map shown?

- A. Four
- B. Three
- C. One
- D. Two



Correct Answer: B

Section:

QUESTION 70

Refer to the exhibit.



How many nodes are represented on the network map shown?

- A. Four
- B. Three
- C. One
- D. Two

Correct Answer: B

Section:

QUESTION 71

Refer to the exhibit.

Status	Name	Application	Destination	Service Port	Type	Resources	Partition / Path
✓	nvs		10.10.10.0/24	80 (HTTP)	Standard	Edt	Common
✓	vs_ftp		10.10.10.1	21 (FTP)	Standard	Edt	Common
✓	vs_http		10.10.10.1	80 (HTTP)	Standard	Edt	Common
✓	vs_https		10.10.10.1	443 (HTTPS)	Standard	Edt	Common

A user attempts to connect to 10.10.10.1.80 using FTP over SSL with an FTPS client. Which virtual server will match and attempt to process the request?

- A. vsjtps
- B. vs_ftp
- C. vs_http
- D. nvfs

Correct Answer: B

Section:



QUESTION 72

All pool members are online. All other virtual server settings are at default What might after the load balancing behavior?

- A. enabling SNAT automap
- B. enabling a fallback host in the http profile
- C. adding a oneconnect profile
- D. adding a persistence profile

Correct Answer: D

Section:

QUESTION 73

A custom HTTP monitor is failing to a pool member 10.10.3.75:8080 that serves up www.example.com.

A ping works to the pool member address.

The SEND string that the monitor is using is: GET/HTTP/!./r/n/Host.www.example.com/r/n/Connection Close/r/n/r/n

Which CLI tool syntax will show that the web server returns the correct HTTP response?

- A. curlhttp://10.10.10.3.75:8080/www.example.com/index.html
- B. curl-header 'Host:www.example.com' http://10.10.3.75:8080/
- C. tracepath 'http://www.example.com:80
- D. tracepath 10.10.3.75:8080 GET /index

Correct Answer: B

Section:

QUESTION 74

The BIG-IP Administrator creates a custom iRule that fails to work as expected. Which F5 online resource should the administrator use to help resolve this issue?

- A. DevCentral
- B. Bug Tracker
- C. University
- D. Health

Correct Answer: A

Section:

QUESTION 75

The current status of a given pool is offline (red). Which condition could explain that state? Assume the descriptions below include all monitors assigned for each scenario.

- A. No monitors are currently assigned to any pool, member or node.
- B. The pool has a monitor assigned to it, and none of the pool members passed the test.
- C. The pool has a monitor assigned to it, and only some of the pool's members passed the test.
- D. A monitor is assigned to all nodes and all nodes have passed the test. The pool's members have no specific monitor assigned to them.

Correct Answer: B

Section:



QUESTION 76

You need to terminate client SSL traffic at the BIG-IP and also to persist client traffic to the same pool member based on a BIG IP supplied cookie. Which four are profiles that would normally be included in the virtual server's definition? (Choose four.)

- A. TCP
- B. HTTP
- C. HTTPS
- D. ClientSSL
- E. ServerSSL
- F. CookieBased Persistence

Correct Answer: A, B, D, F

Section:

QUESTION 77

A site needs to terminate client HTTPS traffic at the BIG-IP and forward that traffic unencrypted. Which two are profile types that must be associated with such a virtual server? (Choose two.)

- A. TCP
- B. HTTP
- C. HTTPS
- D. ClientSSL

E. ServerSSL

Correct Answer: A, D

Section:

QUESTION 78

Which three statements describe a characteristic of profiles? (Choose three.)

- A. Default profiles cannot be created or deleted.
- B. Custom profiles are always based on a parent profile.
- C. A profile can be a child of one profile and a parent of another.
- D. All changes to parent profiles are propagated to their child profiles.
- E. While most virtual servers have at least one profile associated with them, it is not required.

Correct Answer: A, B, C

Section:

QUESTION 79

A virtual server is defined using a source address based persistence profile. The last five connections were A, B, C, A, C . Given the conditions shown in the graphic, if a client with IP address 205.12.45.52 opens a connection to the virtual server, which member will be used for the connection?



All entries for the one virtual server and pool		
Persistence Values	Member	Age (Seconds)
200.10.0.0	10.10.20.1:80	63
201.12.0.0	10.10.20.3:80	43
153.15.0.0	10.10.20.2:80	76
205.12.0.0	10.10.20.4:80	300
195.64.0.0	10.10.20.3:80	22
198.22.0.0	10.10.20.5:80	176
214.77.0.0	10.10.20.1:80	43

Web_Pool Statistics					
Member	Member Ratio	Member Priority	Outstanding Layer 7 Requests	Connection Count	Status
A: 10.10.20.1:80	3	5	6	18	Available
B: 10.10.20.2:80	3	5	6	12	Available
C: 10.10.20.3:80	3	5	12	5	Disabled
D: 10.10.20.4:80	1	1	8	19	Offline
E: 10.10.20.5:80	1	1	4	9	Available

Virtual Server, Pool and Persistence Profile Settings					
VS_Web_Pool Settings		Web_Pool Settings		Source Persist Settings	
Destination	172.160.22.3:80	Load Balancing	Least Connectons	Mode	Source Address
Profile(s)	TCP	Priority Activation	Less than 2	Netmask	255.255.0.0
Pool	Web_Pool	Montitor	Done	Timeout	360 seconds
iRules	None				
Persistence	Source_Persist				

- A. 10.10.20.1:80
- B. 10.10.20.2:80
- C. 10.10.20.3:80
- D. 10.10.20.4:80
- E. 10.10.20.5:80

Correct Answer: B
Section:

QUESTION 80

How is persistence configured?

Persistence Table		
All entries for the one virtual server and pool		
Persistence Values	Member	Age (Seconds)
200.10.0.0	10.10.20.1:80	63
201.12.0.0	10.10.20.3:80	43
153.15.0.0	10.10.20.2:80	76
205.12.0.0	10.10.20.4:80	300
195.64.0.0	10.10.20.3:80	22
198.22.0.0	10.10.20.5:80	176
214.77.0.0	10.10.20.1:80	43

Web_Pool Statistics					
Member	Member Ratio	Member Priority	Outstanding Layer 7 Requests	Connection Count	Status
10.10.20.1:80	3	5	6	18	Available
10.10.20.2:80	3	5	6	12	Available
10.10.20.3:80	3	5	12	5	Disabled
10.10.20.4:80	1	1	8	19	Offline
10.10.20.5:80	1	1	4	9	Available

Virtual Server, Pool and Persistence Profile Settings					
VS_Web_Pool Settings		Web_Pool Settings		Source Persist Settings	
Destination	172.160.22.3:80	Load Balancing	Least Connections	Mode	Source Address
Profile(s)	TCP	Priority Activation	Less than 2	Netmask	255.255.0.0
Pool	Web_Pool	Monitor	Done	Timeout	360 seconds
iRules	None				
Persistence	Source_Persist				

- A. Persistence is an option within each pool's definition.
- B. Persistence is a profile type; an appropriate profile is created and associated with virtual server.
- C. Persistence is a global setting; once enabled, loadbalancing choices are superceded by the persistence method that is specified.
- D. Persistence is an option for each pool member. When a pool is defined, each member's definition includes the option for persistence.

Correct Answer: B

Section:

QUESTION 81

Which cookie persistence method requires the fewest configuration changes on the web servers to be implemented correctly?

- A. insert
- B. rewrite
- C. passive
- D. session

Correct Answer: A

Section:

QUESTION 82

Which statement is true concerning cookie persistence?

- A. Cookie persistence allows persistence independent of IP addresses.
- B. Cookie persistence allows persistence even if the data are encrypted from client to pool member.
- C. Cookie persistence uses a cookie that stores the virtual server, pool name, and member IP address in clear text.
- D. If a client's browser accepts cookies, cookie persistence will always cause a cookie to be written to the client's file system.

Correct Answer: A

Section:

QUESTION 83

Assume a virtual server has a ServerSSL profile. What SSL certificates are required on the pool members?

- A. No SSL certificates are required on the pool members.
- B. The pool members.SSL certificates must only exist.
- C. The pool members.SSL certificates must be issued from a certificate authority.
- D. The pool members.SSL certificates must be created within the company hosting the BIGIPs.



Correct Answer: B

Section:

QUESTION 84

When configuring a Virtual Server to use an iRule with an HTTP_REQUEST event, which lists required steps in a proper order to create all necessary objects?

- A. create profiles, create the iRule, create required pools, create the Virtual Server
- B. create the Virtual Server, create required pools, create the iRule, edit the Virtual Server
- C. create a custom HTTP profile, create required pools, create the Virtual Server, create the iRule
- D. create required pools, create a custom HTTP profile, create the iRule, create the Virtual Server

Correct Answer: B

Section:

QUESTION 85

What is the purpose of provisioning?

- A. Provisioning allows modules that are not licensed to be fully tested.
- B. Provisioning allows modules that are licensed be granted appropriate resource levels.
- C. Provisioning allows the administrator to activate modules in nonstandard combinations.

D. Provisioning allows the administrator to see what modules are licensed, but no user action is ever required.

Correct Answer: B

Section:

QUESTION 86

Which three properties can be assigned to nodes? (Choose three.)

- A. ratio values
- B. priority values
- C. health monitors
- D. connection limits
- E. loadbalancing mode

Correct Answer: A, C, D

Section:

QUESTION 87

The current status of a given pool member is unknown. Which condition could explain that state?

- A. The member has no monitor assigned to it.
- B. The member has a monitor assigned to it and the most recent monitor was successful.
- C. The member has a monitor assigned to it and the monitor did not succeed during the most recent timeout period.
- D. The member's node has a monitor assigned to it and the monitor did not succeed during the most recent timeout period.

Correct Answer: A

Section:

QUESTION 88

The ICMP monitor has been assigned to all nodes. In addition, all pools have been assigned custom monitors. The pool is marked available. If a pool is marked available (green) which situation is sufficient to cause this?

- A. All of the pool member nodes are responding to the ICMP monitor as expected.
- B. Less than 50% of the pool member nodes responded to the ICMP echo request.
- C. All of the members of the pool have had their content updated recently and their responses no longer match the monitor.
- D. Over 25% of the pool members have had their content updated and it no longer matches the receive rule of the custom monitor. The other respond as expected.

Correct Answer: D

Section:

QUESTION 89

Generally speaking, should the monitor templates be used as production monitors or should they be customized prior to use.

- A. Most templates, such as http and tcp, are as effective as customized monitors.
- B. Monitor template customization is only a matter of preference, not an issue of effectiveness or performance.
- C. Most templates, such as https, should have the receive rule customized to make the monitor more robust.
- D. While some templates, such as ftp, must be customized, those that can be used without modification are not improved by specific changes.

Correct Answer: C

Section:

QUESTION 90

You have a pool of servers that need to be tested. All of the servers but one should be tested every 10 seconds, but one is slower and should only be tested every 20 seconds. How do you proceed?

- A. It cannot be done. All monitors test every five seconds.
- B. It can be done, but will require assigning monitors to each pool member.
- C. It cannot be done. All of the members of a pool must be tested at the same frequency.
- D. It can be done by assigning one monitor to the pool and a different monitor to the slower pool member.

Correct Answer: D

Section:

QUESTION 91

When can a single virtual server be associated with multiple profiles?

- A. Never. Each virtual server has a maximum of one profile.
- B. Often. Profiles work on different layers and combining profiles is common.
- C. Rarely. One combination, using both the TCP and HTTP profile does occur, but it is the exception.
- D. Unlimited. Profiles can work together in any combination to ensure that all traffic types are supported in a given virtual server.

Correct Answer: B

Section:



QUESTION 92

A site needs a virtual server that will use an iRule to parse HTTPS traffic based on HTTP header values. Which two profile types must be associated with such a virtual server? (Choose two.)

- A. TCP
- B. HTTP
- C. HTTPS
- D. ServerSSL

Correct Answer: A, B

Section:

QUESTION 93

You have created a custom profile named TEST2. The parent profile of TEST2 is named TEST1. If additional changes are made to TEST1, what is the effect on TEST2?

- A. All changes to TEST1 are propagated to TEST2.
- B. Some of the changes to TEST1 may propagate to TEST2.
- C. Changes to TEST1 cannot affect TEST2 once TEST2 is saved.
- D. When TEST1 is changed, the administrator is prompted and can choose whether to propagate changes to TEST2.

Correct Answer: B

Section:

QUESTION 94

If a client's browser does not accept cookies, what occurs when the client connects to a virtual server using cookie persistence?

- A. The connection request is not processed.
- B. The connection request is sent to a policy server.
- C. The connection request is loadbalanced to an available pool member.
- D. The connection request is refused and the client is sent a 'server not available' message.

Correct Answer: C

Section:

QUESTION 95

What is the purpose of MAC masquerading?

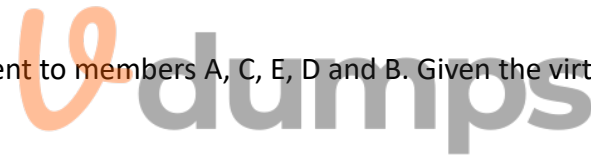
- A. to prevent ARP cache errors
- B. to minimize ARP entries on routers
- C. to minimize connection loss due to ARP cache refresh delays
- D. to allow both BIGIP devices to simultaneously use the same MAC address

Correct Answer: C

Section:

QUESTION 96

The incoming client IP address is 195.64.45.52 and the last five connections have been sent to members A, C, E, D and B. Given the virtual server, pool, and persistence definitions and statistics shown in the above graphic, which member will be used for the next connection?

The logo for Vdumps.com, featuring a stylized orange 'V' followed by the word 'dumps' in a grey, lowercase sans-serif font.

Persistence Table		
All entries for the one virtual server and pool		
Persistence Values	Member	Age (Seconds)
200.10.0.0	10.10.20.1:80	63
201.12.0.0	10.10.20.3:80	43
153.15.0.0	10.10.20.2:80	76
205.12.0.0	10.10.20.4:80	300
195.64.0.0	10.10.20.3:80	22
198.22.0.0	10.10.20.5:80	176
214.77.0.0	10.10.20.1:80	43

Web_Pool Statistics					
Member	Member Ratio	Member Priority	Outstanding Layer 7 Requests	Connection Count	Status
10.10.20.1:80	3	5	6	18	Available
10.10.20.2:80	3	5	6	12	Available
10.10.20.3:80	3	5	12	5	Disabled
10.10.20.4:80	1	1	8	19	Offline
10.10.20.5:80	1	1	4	9	Available

 Vdumps

Virtual Server, Pool and Persistence Profile Settings					
VS_Web_Pool Settings		Web_Pool Settings		Source Persist Settings	
Destination	172.160.22.3:80	Load balancing	Least Connections	Mode	Source Address
Profile(s)	TCP	Priority Activation	Less than 2	Netmask	255.255.0.0
Pool	Web_Pool	Monttir	Done	Timeout	360 seconds
iRules	None				
Persistence	Source_Persist				

- A. 10.10.20.1:80
- B. 10.10.20.2:80
- C. 10.10.20.3:80
- D. 10.10.20.4:80
- E. 10.10.20.5:80
- F. It cannot be determined with the information given.

Correct Answer: C
Section:

QUESTION 97

Assume a virtual server has a ServerSSL profile. What SSL certificates are required on the BIG-IP?

- A. No SSL certificates are required on the BIG-IP.
- B. The BIG-IP's SSL certificates must only exist.
- C. The BIG-IP's SSL certificates must be issued from a certificate authority.
- D. The BIG-IP's SSL certificates must be created within the company hosting the BIG-IPs.

Correct Answer: A

Section:

QUESTION 98

Assume a virtual server is configured with a ClientSSL profile. What would the result be if the virtual server's destination port were not 443?

- A. SSL termination could not be performed if the virtual server's port was not port 443.
- B. Virtual servers with a ClientSSL profile are always configured with a destination port of 443.
- C. As long as client traffic was directed to the alternate port, the virtual server would work as intended.
- D. Since the virtual server is associated with a ClientSSL profile, it will always process traffic sent to port 443.

Correct Answer: C

Section:

QUESTION 99

A BIG-IP Administrator needs to restore an encrypted UCS archive from the command line using the TMSH utility. Which TMSH command should the BIG-IP Administrator use to accomplish this?

- A. load/sys ucs <filepath> passphrase
- B. load/sys config file <filepath> passphrase
- C. load/sys config file <filepath>
- D. load/sys ucs <filepath> no-license



Correct Answer: A

Section:

QUESTION 100

On the VCMP system, a BIG-IP host administrator imports a new ISO image into the host's /shared/images folder. The new ISO images that reside on the vCMP host are available for installation on the guest. How should the BIG-IP Administrator install one image from within the guest?

- A. Install the new software on the host and wait for it to automatically be installed on all guests.
- B. Run the following command on guest tms install sys software block-device-image image_name volume < volume_name>
- C. Run the following command on guest tms install sys software image image_name volume < volume_name>
- D. Run the following command on host tms install sys software block-device-image image_name volume < volume_name>

Correct Answer: D

Section:

QUESTION 101

A BIG-IP Administrator configures a Virtual Server. Users report that they always receive a TCP RST packet to the BIG-IP system when attempting to connect to it. What is the possible reason for this issue?

- A. The virtual server Type is set to Internal

- B. The virtual server Type is set to Reject
- C. The virtual server Type is set to Drop
- D. The virtual server Type is set to Stateless

Correct Answer: B

Section:

QUESTION 102

A BIG-IP Administrator needs to remove a pool specific health monitor. There is a pool named Best Pool with two members, one named Best pool member and one named Best pool member2. In the Local Traffic section of the administrative GUI, which steps should the BIG-IP Administrator take to remove a pool level monitor?

- A. Pool > Pool List > Best Pool > Members > Health Monitors
- B. Nodes > Node List > Best _pool_member1 > Health Monitors
- C. Monitors > Monitor Name > Instances
- D. Pool > Pool List > Best Pool > Health Monitors

Correct Answer: D

Section:

QUESTION 103

Which statement is true concerning SSL termination?

- A. A virtual server that has both ClientSSL and ServerSSL profiles can still support cookie persistence.
- B. Decrypting traffic at the BIG-IP allows the use of iRules for traffic management, but increases the load on the pool member.
- C. When any virtual server uses a ClientSSL profile, all SSL traffic sent to the BIG-IP is decrypted before it is forwarded to servers.
- D. If a virtual server has both a ClientSSL and ServerSSL profile, the pool members have less SSL processing than if the virtual server had only a ClientSSL profile.

Correct Answer: A

Section:

QUESTION 104

A site wishes to perform source address translation on packets from some clients but not others. The determination is not based on the client's IP address, but on the virtual servers their packets arrive on. What could best accomplish this goal?

- A. A SNAT for all addresses could be defined, and then disable the SNAT processing for select VLANs.
- B. Some virtual servers could be associated with SNAT pools and others not associated with SNAT pools.
- C. The decision to perform source address translation is always based on VLAN. Thus, the goal cannot be achieved.
- D. The decision to perform source address translation is always based on a client's address (or network). Thus, this goal cannot be achieved.

Correct Answer: B

Section:

QUESTION 105

Assume a client's traffic is being processed only by a NAT; no SNAT or virtual server processing takes place. Also assume that the NAT definition specifies a NAT address and an origin address while all other settings are left at their defaults. If a client were to initiate traffic to the NAT address, what changes, if any, would take place when the BIG-IP processes such packets?

- A. The source address would not change, but the destination address would be translated to the origin address.

- B. The destination address would not change, but the source address would be translated to the origin address.
- C. The source address would not change, but the destination address would be translated to the NAT's address.
- D. The destination address would not change, but the source address would be translated to the NAT's address.

Correct Answer: A

Section:

QUESTION 106

A standard virtual server is defined with a pool and a SNAT using automap. All other settings for the virtual server are at defaults. When client traffic is processed by the BIG-IP, what will occur to the IP addresses?

- A. Traffic initiated by the pool members will have the source address translated to a self-IP address but the destination address will not be changed.
- B. Traffic initiated to the virtual server will have the destination address translated to a pool member address and the source address translated to a self-IP address.
- C. Traffic initiated by selected clients, based on their IP address, will have the source address translated to a self-IP address but the destination will only be translated if the traffic is destined to the virtual server.
- D. Traffic initiated to the virtual server will have the destination address translated to a pool member address and the source address translated to a self-IP address. Traffic arriving destined to other destinations will have the source translated to a self-IP address only.

Correct Answer: B

Section:

QUESTION 107

Which VLANs must be enabled for a SNAT to perform as desired (translating only desired packets)?

- A. The SNAT must be enabled for all VLANs.
- B. The SNAT must be enabled for the VLANs where desired packets leave the BIG-IP.
- C. The SNAT must be enabled for the VLANs where desired packets arrive on the BIG-IP.
- D. The SNAT must be enabled for the VLANs where desired packets arrive and leave the BIG-IP.



Correct Answer: C

Section:

QUESTION 108

A BIG-IP has a virtual server at 150.150.10.10:80 with SNAT automap configured. This BIG-IP also has a SNAT at 150.150.10.11 set for a source address range of 200.200.1.0 / 255.255.255.0. All other settings are at their default states. If a client with the IP address 200.200.1.1 sends a request to the virtual server, what is the source IP address when the associated packet is sent to the pool member?

- A. 200.200.1.1
- B. 150.150.10.11
- C. Floating self IP address on VLAN where the packet leaves the system
- D. Floating self IP address on VLAN where the packet arrives on the system

Correct Answer: C

Section:

QUESTION 109

Which IP address will the client address be changed to when SNAT automap is specified within a Virtual Server configuration?

- A. The floating self-IP address on the VLAN where the packet leaves the system.
- B. The floating self-IP address on the VLAN where the packet arrives on the system.

- C. It will alternate between the floating and non floating self-IP address on the VLAN where the packet leaves the system so that port exhaustion is avoided.
- D. It will alternate between the floating and non floating self-IP address on the VLAN where the packet arrives on the system so that port exhaustion is avoided.

Correct Answer: A

Section:

QUESTION 110

A virtual server at 10.10.1.100:80 has the rule listed below applied. when HTTP_REQUEST { if {[HTTP::uri] ends_with 'htm' } { pool pool1 } else if {[HTTP::uri] ends_with 'xt' } { pool pool2 } http://10.10.1.100/foo.txt If a user connects to http://10.10.1.100/foo.txt which pool will receive the request?

- A. pool1
- B. pool2
- C. None. The request will be dropped.
- D. Unknown. The pool cannot be determined from the information provided.

Correct Answer: B

Section:

QUESTION 111

Which statement is true concerning iRule events?

- A. All iRule events relate to HTTP processes.
- B. All client traffic has data that could be used to trigger iRule events.
- C. All iRule events are appropriate at any point in the clientserver communication.
- D. If an iRule references an event that doesn't occur during the client's communication, the client's connection will be terminated prematurely.

Correct Answer: B

Section:

QUESTION 112

Which three iRule events are likely to be seen in iRules designed to select a pool for load balancing? (Choose three.)

- A. CLIENT_DATA
- B. SERVER_DATA
- C. HTTP_REQUEST
- D. HTTP_RESPONSE
- E. CLIENT_ACCEPTED
- F. SERVER_SELECTED
- G. SERVER_CONNECTED

Correct Answer: A, C, E

Section:

QUESTION 113

Which event is always triggered when a client initially connects to a virtual server configured with an HTTP profile?

- A. HTTP_DATA

- B. CLIENT_DATA
- C. HTTP_REQUEST
- D. CLIENT_ACCEPTED

Correct Answer: D

Section:

QUESTION 114

A virtual server is listening at 10.10.1.100:80 and has the following iRule associated with it: when HTTP_REQUEST { if {[HTTP::uri] ends_with 'txt' } { pool pool1 } elseif {[HTTP::uri] ends_with 'php' } { pool pool2 } http://10.10.1.100/foo.html If a user connects to http://10.10.1.100/foo.html, which pool will receive the request?

- A. pool1
- B. pool2
- C. None. The request will be dropped.
- D. Unknown. The pool cannot be determined from the information provided.

Correct Answer: D

Section:

QUESTION 115

A virtual server is listening at 10.10.1.100:any and has the following iRule associated with it: when CLIENT_ACCEPTED { if {[TCP::local_port] equals 80 } { pool pool1 } elseif {[TCP::local_port] equals 443} { pool pool2 } If a user connects to 10.10.1.100 and port 22, which pool will receive the request?

- A. pool1
- B. pool2
- C. None. The request will be dropped.
- D. Unknown. The pool cannot be determined from the information provided.



Correct Answer: D

Section:

QUESTION 116

Which statement is true about the synchronization process, as performed by the Configuration Utility or by typing b config sync all?

- A. The process should always be run from the standby system.
- B. The process should always be run from the system with the latest configuration.
- C. The two /config/bigip.conf configuration files are synchronized (made identical) each time the process is run.
- D. Multiple files, including /config/bigip.conf and /config/bigip_base.conf, are synchronized (made identical) each time the process is run.

Correct Answer: C

Section:

QUESTION 117

Which statement is true concerning the default communication between a redundant pair of BIG-IP devices?

- A. Communication between the systems cannot be effected by port lockdown settings.
- B. Data for both connection and persistence mirroring are shared through the same TCP connection.

- C. Regardless of the configuration, some data is communicated between the systems at regular intervals.
- D. Connection mirroring data is shared through the serial fail over cable unless network failover is enabled.

Correct Answer: B

Section:

QUESTION 118

When upgrading a BIG-IP redundant pair, what happens when one system has been updated but the other has not?

- A. Syncing should not be performed.
- B. The first system to be updated will assume the Active role.
- C. This is not possible since both systems are updated simultaneously.
- D. The older system will issue SNMP traps indicating a communication error with the partner.

Correct Answer: A

Section:

QUESTION 119

When using the setup utility to configure a redundant pair, you are asked to provide a 'Failover Peer IP'. Which address is this?

- A. an address of the other system in its management network
- B. an address of the other system in a redundant pair configuration
- C. an address on the current system used to listen for failover messages from the partner BIG-IP
- D. an address on the current system used to initiate mirroring and network failover heartbeat messages

Correct Answer: B

Section:

QUESTION 120

Which two statements describe differences between the active and standby systems? (Choose two.)

- A. Monitors are performed only by the active system.
- B. Failover triggers only cause changes on the active system.
- C. Virtual server addresses are hosted only by the active system.
- D. Configuration changes can only be made on the active system.
- E. Floating selfIP addresses are hosted only by the active system.

Correct Answer: C, E

Section:

QUESTION 121

Assuming other failover settings are at their default state, what would occur if the failover cable were to be disconnected for five seconds and then reconnected?

- A. As long as network communication is not lost, no change will occur.
- B. Nothing. Failover due to loss of voltage will not occur if the voltage is lost for less than ten seconds.
- C. When the cable is disconnected, both systems will become active. When the voltage is restored, unit two will revert to standby mode.
- D. When the cable is disconnected, both systems will become active. When the voltage is restored, both systems will maintain active mode.

Correct Answer: C

Section:

QUESTION 122

Where is persistence mirroring configured?

- A. It is always enabled.
- B. It is part of a pool definition.
- C. It is part of a profile definition.
- D. It is part of a virtual server definition.

Correct Answer: C

Section:

QUESTION 123

Given that VLAN failsafe is enabled on the external VLAN and the network that the active BIG-IP's external VLAN is connected to has failed, which statement is always true about the results?

- A. The active system will note the failure in the HA table.
- B. The active system will reboot and the standby system will go into active mode.
- C. The active system will failover and the standby system will go into active mode.
- D. The active system will restart the traffic management module to eliminate the possibility that BIG-IP is the cause for the network failure.

Correct Answer: A

Section:

QUESTION 124

Where is connection mirroring configured?

- A. It an option within a TCP profile.
- B. It is an optional feature of each pool.
- C. It is not configured; it is default behavior.
- D. It is an optional feature of each virtual server.

Correct Answer: D

Section:

QUESTION 125

Assume the bigd daemon fails on the active system. Which three are possible results? (Choose three.)

- A. The active system will restart the bigd daemon and continue in active mode.
- B. The active system will restart the tmm daemon and continue in active mode.
- C. The active system will reboot and the standby system will go into active mode.
- D. The active system will failover and the standby system will go into active mode.
- E. The active system will continue in active mode but gather member and node state information from the standby system.

Correct Answer: A, C, D

Section:



QUESTION 126

How is MAC masquerading configured?

- A. Specify the desired MAC address for each VLAN for which you want this feature enabled.
- B. Specify the desired MAC address for each selfIP address for which you want this feature enabled.
- C. Specify the desired MAC address for each VLAN on the active system and synchronize the systems.
- D. Specify the desired MAC address for each floating selfIP address for which you want this feature enabled.

Correct Answer: A

Section:

QUESTION 127

Which action will take place when a failover trigger is detected by the active system?

- A. The active device will take the action specified for the failure.
- B. The standby device also detects the failure and assumes the active role.
- C. The active device will wait for all connections to terminate and then failover.
- D. The standby device will begin processing virtual servers that have failed, but the active device will continue servicing the functional virtual servers.

Correct Answer: A

Section:

QUESTION 128

Assuming that systems are synchronized, which action could take place if the fail over cable is connected correctly and working properly, but the systems cannot communicate over the network due to external network problems?

- A. If network failover is enabled, the standby system will assume the active mode.
- B. Whether or not network failover is enabled, the standby system will stay in standby mode.
- C. Whether or not network failover is enabled, the standby system will assume the active mode.
- D. If network failover is enabled, the standby system will go into active mode but only until the network recovers.

Correct Answer: B

Section:

QUESTION 129

Which must be sent to the license server to generate a new license?

- A. the system's dossier
- B. the system's host name
- C. the system's base license
- D. the system's purchase order number

Correct Answer: A

Section:

QUESTION 130

When initially configuring the BIG-IP system using the config utility, which two parameters can be set? (Choose two.)

- A. the netmask of the SCCP
- B. the IP address of the SCCP
- C. the port lockdown settings for the SCCP
- D. the netmask of the host via the management port
- E. the IP address of the host via the management port
- F. the port lockdown settings for the host via the management port

Correct Answer: D, E
Section:

QUESTION 131

A site has six members in a pool. All of the servers have been designed, built, and configured with the same applications. It is known that each client's interactions vary significantly and can affect the performance of the servers.

If traffic should be sent to all members on a regular basis, which loadbalancing mode is most effective if the goal is to maintain a relatively even load across all servers?

- A. Ratio
- B. Priority
- C. Observed
- D. Round Robin

Correct Answer: C
Section:



QUESTION 132

The incoming client IP address is 205.12.45.52. The last five connections have been sent to members C, D, A, B, B. Given the virtual server and pool definitions and the statistics shown in the graphic, which member will be used for the next connection?

VS_Web_Pool Settings		Web_Pool Parameters			
Destination:	172.160.22.3:80	Load Balancing:	Least Connections		
Profiles:	TCP	Priority Group			
iRules:	None	Activation:	Less Than 2		
Default Pool:	Web_Pool	Monitor:	None		
Persistence:	None				

Web_Pool Member Statistics and Settings					
Member	Member Ratio	Member Priority	Outstanding Requests	Current Connections	Status
A: 10.10.20.1:80	3	5	4	56	Unknown
B: 10.10.20.2:80	3	4	4	57	Unknown
C: 10.10.20.3:80	3	5	4	54	Offline
D: 10.10.20.4:80	1	3	1	2	Unknown
E: 10.10.20.5:80	1	1	1	1	Unknown

- A. 10.10.20.1:80
- B. 10.10.20.2:80
- C. 10.10.20.3:80
- D. 10.10.20.4:80
- E. 10.10.20.5:80

Correct Answer: A
Section:

QUESTION 133

Which two can be a part of a pool's definition? (Choose two.)

- A. rule(s)
- B. profile(s)
- C. monitor(s)
- D. persistence type
- E. loadbalancing mode

Correct Answer: C, E
Section:

