

F5.301a.by.Atak.63q

Number: 301a
Passing Score: 800
Time Limit: 120
File Version: 4.0

Exam Code: 301a

Exam Name: BIG-IP LTM Specialist: Architect, Set up, Deploy



Exam A

QUESTION 1

An unwanted IP address tries to connect to the configuration utility via Self IP. An LTM Specialist needs to block the attempts based on the IP address. How should the LTM Specialist block the attempts without affecting other users?

- A. SSH IP allow list
- B. Port lockdown
- C. Device trust
- D. Packet filter

Correct Answer: D

Section:

QUESTION 2

An LTM Specialist is configuring a virtual server with an IP address. Which configuration is unsupported?

- A. Performance 14 virtual server with an HTTP profile
- B. Standard virtual server with an HTTP profile
- C. Performance 14 virtual server with a FastHTTP profile
- D. Standard virtual server with a TCP profile

Correct Answer: A

Section:

QUESTION 3

A virtual server is experiencing intermittent port exhaustion. What should be done to fix this issue?

- A. add more SNAT addresses
- B. add more pool members
- C. enable advanced routing
- D. enable SNAT automap

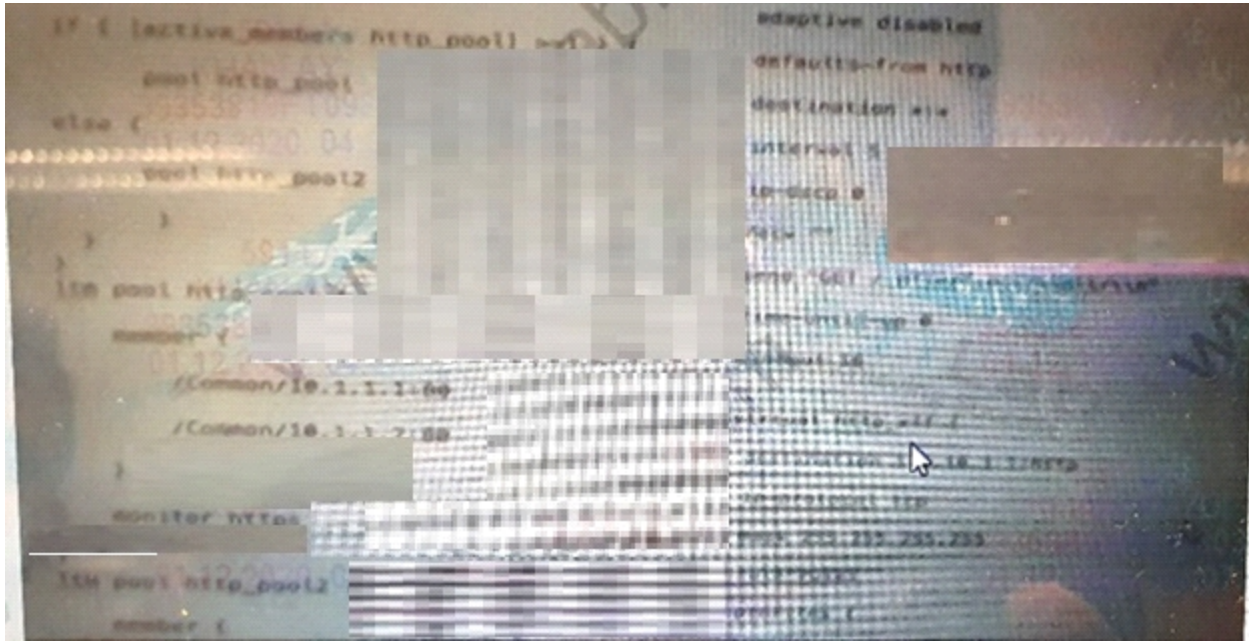
Correct Answer: A

Section:

QUESTION 4

Refer to the exhibit





Given the bigip conf extract shown where the servers only talk http on port 80, which node will receive the next user request?

- A. 72.10.1.1
- B. 10.1.1.1
- C. 10.1.1.2 0
- D. 10.1.1.3

Correct Answer: D

Section:



QUESTION 5

An LTM Specialist is the administrator of an HA pair that contains two BIG IP units and one floating traffic group (TG1). A new project requires the creation of 30 virtual servers. The Specialist decides to create a new floating traffic group (TG2) to handle this requirement. Objects for this project created by the BIG-IP Managers must appear in the correct traffic group.

Which configuration should the LTM Specialist use to meet the requirement?

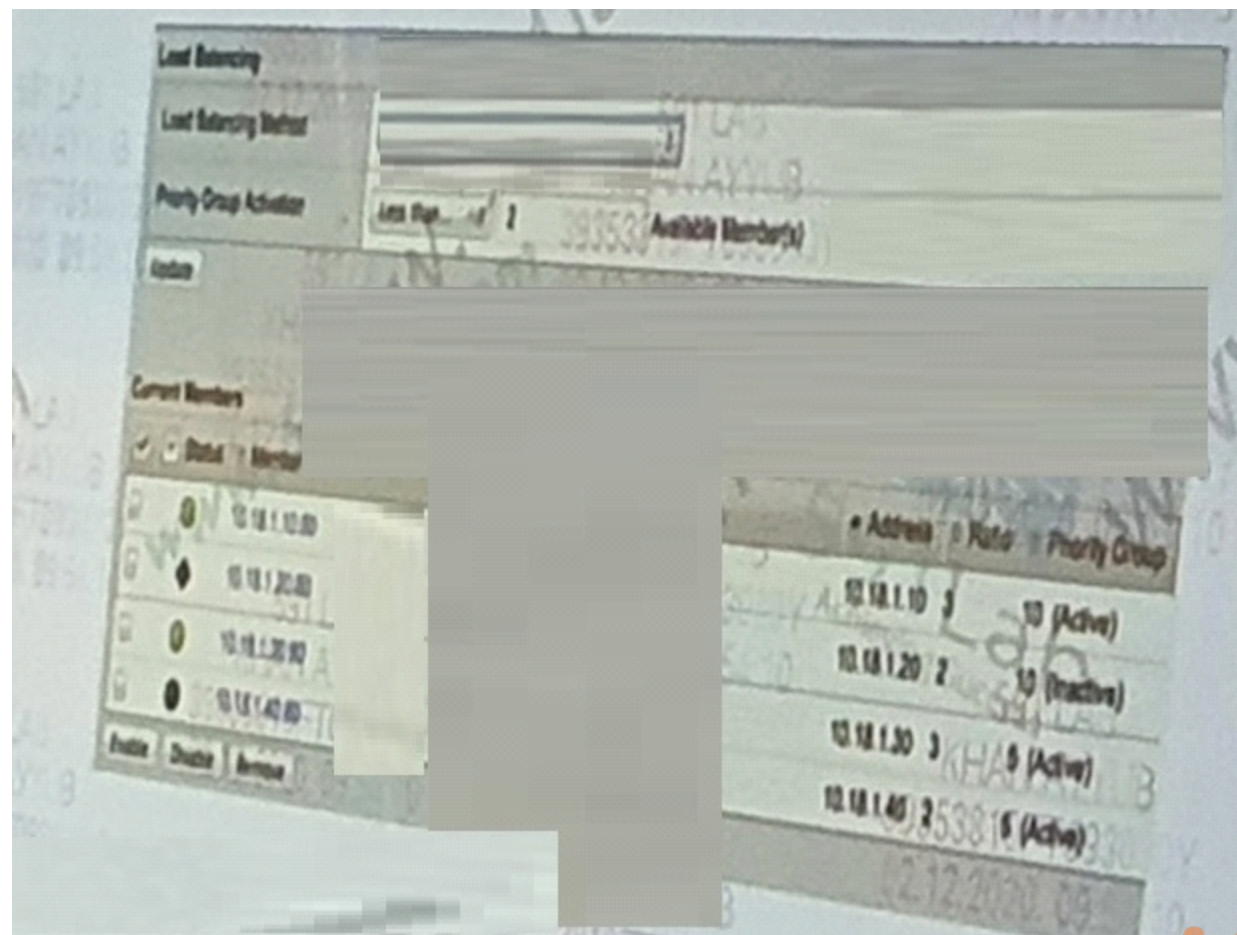
- A. Move the BIG-IP Managers from TG1 to TG2
- B. Create a new partition and set the default traffic group to TG2
- C. Modify the default traffic group of the Common partition to TG2
- D. Restrict the Traffic Group Access of BIG-I Managers to TG2

Correct Answer: B

Section:

QUESTION 6

Refer to the exhibit.



The pool shown is configured with four pool members in a variety of states. The application is receiving a large number of request. The LTM Specialist needs to make changes to make sure that all members receive the same levels of traffic.

Which changes need to be made?

- A. Enable 10.80.1.40 disable priority group activation, enable ratio
- B. Enable 10.80.1.40 and 10.80.1.1.20 disable group activation, enable Round Robin
- C. Enable 10.80.1.20 disable priority group activation, enable Round Robin
- D. Enable 10.80.1.40 and 10.80.1.20 disable priority group activation, enable ratio.

Correct Answer: B

Section:

QUESTION 7

A new iRule needs to be tested. The LTM Specialist needs to measure page load times and monitor potential changes in memory usage A load test is scheduled. Which two features should the LTM Specialist use to monitor these requirements? (Choose two.)

- A. Tmsh show memory
- B. Analytics
- C. Tmsh show sys proc-info
- D. Tmsh show sys provision

Correct Answer: B, C

Section:

Explanation:

Explanation Need to detect memory changes in real time, use to Page load times with Analytics profile

QUESTION 8

A web developer needs a virtual server configured for an application.

The application details are as follows:

Application is accessed on port 443.

The application traffic is encrypted by the server.

HTTP is not being used. No data manipulation is necessary.

Throughput is critical.

NO connections are terminated on the LTM.

Which configuration provides the best performance?

A)

```
ltm virtual /Common/WebServer {
  destination /Common/10.10.10.10:443
  ip-protocol tcp
  mask 255.255.255.255
  pool /Common/Web_pool
  profiles {
    /Common/fastL4 {}
  }
  source 0.0.0.0/0
  translate-address enabled
  translate-port enabled
}
```

B)




```
item virtual /CommonWebServer {
  destination /Common/10.10.10.10:443
  ip-protocol tcp
  mask 255.255.255.255
  pool /Common/Web_pool
  profiles {
    /Common/WildcardCert {
      context clientside
    }
    /Common/serverssl {
      context serverside
    }
    /Common/tcp-lan-optimized {
      context serverside
    }
    /Common/tcp-wan-optimized {
      context clientside
    }
  }
  source 0.0.0.0/0
  translate-address enabled
  translate-port enabled
}
```

C)

```
/Common/tcp-wan-optimized {
  context clientside
}
}
source 0.0.0.0/0
translate-address enabled
translate-port enabled
}
```

D)

 **vdumps**

```
tm virtual /Common/WebServer {
  destination /Common/10.10.10.443
  ip-protocol tcp
  mask 255.255.255.255
  pool /Common/Web_pool
  profiles {
    /Common/tcp {}
  }
  source 0.0.0.0
  translate-address enabled
  translate-port enabled
}
```

- A. Option
- B. Option
- C. Option
- D. Option

Correct Answer: B

Section:

QUESTION 9

RADIUS authentication has been configured on the LTM device. The default remote user access requirements are as shown:

Read only access to the configuration Utility

Access to TMOS shell

Which two items need to be configured in this situation? (Choose two)

- A. Console access is Advanced Shell
- B. Console access is Read Only
- C. Default remote user role is Guest
- D. In Console access is TMSH
- E. Default remote user role is Manager
- F. Default remote user role is Operator

Correct Answer: B, D

Section:

QUESTION 10

What should an LTM Specialist configure on an LTM device to send AVR notification emails?

- A. Email notification to be sent via iControl from the LTM device
- B. Syslog on the LTM device to send to an SMTP server
- C. Custom SNMP traps on the LTM device for AVR notifications
- D. Email notification to be sent via SMTP from the LTM device

The logo for Vdumps.com, featuring a stylized orange 'V' followed by the word 'dumps' in a grey, lowercase, sans-serif font.

Correct Answer: D

Section:

QUESTION 11

An LTM Specialist needs to gather website statistics such as latency and throughput on the existing virtual server. This virtual server load Balances the backend web servers. Which F5 feature will provide this?

- A. the Performance panel
- B. the AVR module
- C. the Dashboard
- D. the Statistics panel

Correct Answer: B

Section:

QUESTION 12

Which Standard Virtual Server settings should an LTM Specialist use to load balance across routed path of two different ISPs?

- A. address translation enabled and port translation disabled
- B. both address and port translation enabled
- C. both address and port translation disabled
- D. address translation disabled and port translation enabled

Correct Answer: B

Section:

QUESTION 13

An LTM Specialist needs to terminate client SSL traffic and based on the cookie presented by client. Which set of profiles should the LTM Specialist use?

- A. HTTPS, Client SSL, Cookie Persistence Profile
- B. HTTP, Server SSL, SSL Cookie Profile
- C. HTTPS, Server SSL, SSL Cookie Profile
- D. HTTP, Client SSL, Cookie Persistence Profile,

Correct Answer: D

Section:

QUESTION 14

An LTM Specialist observes decreased performance and intermittent connection reap LTM system.




```

lta pool main_http_pool {
load-balancing-mode observed-node
members {
10.10.0.100:8080 {
address 10.10.0.100
}
10.10.0.101:8080 {
address 10.10.0.101
}
10.10.0.99:8080 {
address 10.10.0.99
}
}
monitor http
}
lta profile tcp corp_tcp {
app-service none
defaults-from tcp
idle-timeout 14400
lta virtual main_vip http {
destination 192.168.3.100:80
ip-protocol tcp
mask 255.255.255.255
profiles {
http {
corp_tcp {
}
}
pool {
main_http_pool
}
source 0.0.0.0/0
}
}
}

```

Based on the configuration, which action will address these issues?

- A. Use an optimized TCP profile.
- B. Use a FastL4 profile on the virtual server
- C. Use a default caching profile on the virtual server.
- D. Use a shorter idle timeout on the TCP profile.

Correct Answer: D

Section:

QUESTION 15

An LTM Specialist regularly provides analytics reports that show that traffic generated by different subnets within the organization. The LTM Specialist needs show the associate department names next the IP addresses in the reports.

Which step should the LTM Specialist take to meet this requirement?

- A. use an iRule to change the output of the report
- B. export the report and add the department names manually
- C. create VLANs for each subnet and set the name accordingly
- D. define active subnets and assign a name to certain subnets

Correct Answer: C

Section:

QUESTION 16

in which Application Visibility and Reporting (AYR) profile must the SMTP profile be defined to configure notifications via email?

- A. App analytics profile
- B. virtual server profile
- C. custom analytics profile



D. default analytics profile

Correct Answer: C

Section:

QUESTION 17

An LTM device configuration is as shown:

An LTM device configuration is as shown

```
ltm virtual /Common/vs-10.45.120.4_80 (
  destination /Common/10.45.120.4:80
  ip-protocol tcp
  mask 255.255.255.255
  persist (
    /Common/Persist_900 (
      default yes
    )
  )
)
pool /Common/site-10.45.120.4_80
profiles (
  /Common/tcp ( )
)
source 0.0.0.0/0
translate-address enabled
translate-port enabled
)

ltm persistence source-addr /Common/Persist_900 (
  app-service none
  defaults-from /Common/source_addr
  timeout 900
)
```



What should be the two expected outcomes based on this configuration? (Choose two.)

- A. A client session that has been idle for 16 minutes will be sent to the same pool member
- B. A client session that has been idle for 20 minutes will be balanced to a new pool member
- C. A client session that has been idle for 14 minutes will be balanced to a new pool member
- D. A client session that has been idle for 48 minutes will be sent to the same pool members
- E. A client session that has been idle for 12 minutes will be sent to the same pool member

Correct Answer: B, E

Section:

QUESTION 18

An LTM Specialist needs to load balance an application using an LTM device to meet the requirements:

The application servers do NOT Support SSL, but client access to the application should be secured.

Multiple requests from the same client should be sent to the same pool member.

All pool members will have roughly the same processing power, and traffic should be distributed evenly.

The LTM device is NOT the pool members' default gateway.

Which configuration should the LTM Specialist?

- A. a performance 14 virtual server with a SNAT and cookie persistence
- B. a performance L4 virtual server with a Client SSL profile and Source Address persistence
- C. A performance L4 virtual server with a SNAT, HTTP profile. Server SSL profile, and cookie persistence
- D. A standard virtual server with a SNAT, HTTP profile Server SSL profile, and cookie persistence
- E. A standard virtual server with a SNAT, HTTP profile, Client profile, and cookie persistence.

Correct Answer: E

Section:

QUESTION 19

Remote users who access the LTM device are authenticated via Radius. The default remote user role is Guest Some users need LTM device with the Administrator role. The F5 Radius attributes are configure on the Radius server.

Which configuration item needs to be created?

- A. Remote User role
- B. Admin account
- C. User role
- D. User account

Correct Answer: A

Section:

QUESTION 20

An HTTP monitor is created and assigned to a pool with the following non-default configuration:

Interval: 7 seconds

Timeout: 22 seconds

Reverse: Yes

Send String: GET/status.html HTTP/1.1/r/nHost:test.example.com/r/nConnector:Close Receive String: Up

The HTTP server sends the following response:



```

HTTP/1.1 200 OK
Server: Apache
Content-Length: 1217
Keep-Alive: timeout=5, max=100
Connection: Keep-Alive
Content-Type: text/html

<!DOCTYPE html PUBLIC "-//W3C//DTD HTML 4.01 Transitional//EN">
<HTML>
<HEAD>
<meta http-equiv="Content-type" content="text/html; charset=UTF-8">
</HEAD>
<div>UP</div>
</BODY>
</HTML>

```

What is the resulting pool status?

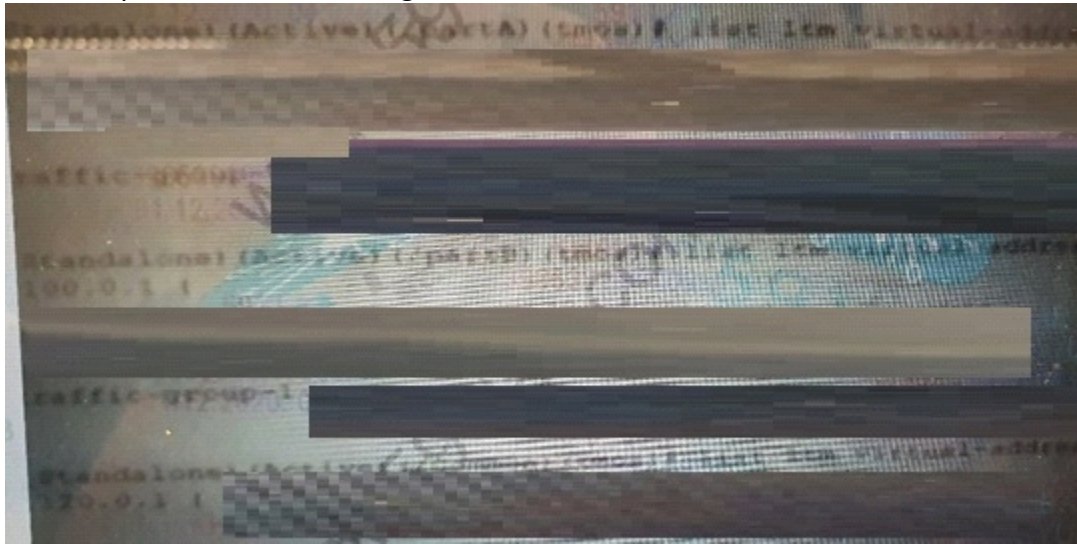
- A. Unavailable (Enabled) Available (Enabled)
- B. Offline (Enabled)
- C. Unknown (Disabled)

Correct Answer: A

Section:

QUESTION 21

An ITM Specialist has the configuration shown:



The LTM Specialist needs to create a new virtual server in part B. Which virtual address(es) should be used for the new virtual server?

- A. 10.100.0.1 and 10.120.0.1
- B. 10.90.0.1 and 10.12.0.1
- C. 10.120.0.1 only
- D. 10.90.0.1 and 10.100.0.1

Correct Answer: A

Section:

QUESTION 22

A pool with a default connection limit is configured to use Round Robin as the load balancing method. An LTM Specialist needs to ensure that the LTM device selects a server with the fewest number of connections when new clients connect. Another pool is using the same set of backend servers.

Which load balancing-method should the pool be changed to?

- A. Weighted Least Connections (node)
- B. Weighted Least Connections (member)
- C. Least Connections
- D. Least Connections

Correct Answer: C

Section:

QUESTION 23

An LTM device needs an additional traffic group.

Which configuration item is required?

- A. Default device



- B. Group name
- C. MAC Masquerade Address
- D. Auto Fallback Timeout

Correct Answer: B

Section:

QUESTION 24

A new HTTP server has been deployed on an LTM device. The application running on the server must be monitored by the LTM device. The following is required:

A new HTTP server has been deployed on an LTM device. The application running on the server must be monitored by the LTM device. The following is required:

When the server is unavailable, it will send an HTTP status code of 200 in response to a request for the status.html page.

When the server is available, it will send an HTTP status code of 201 in response to a request for the status.html page.

When the 200 status code is received, the pool member should receive no new connections.

Which configuration change should be made to meet these requirements?

- A. set the Send String to GET/status.html and the Receive String to 200 and Receive Disable String to 201.
- B. set the Send String to GET Arian and the Receive String to 200 and Receive Disable String to 201.
- C. set the Send String to GET Arian and the Receive Disable String to 200 and Receive String to 201.
- D. set the Send String to Get /status.html and the Receive Disable String to 200 and Receive String to 201.

Correct Answer: D

Section:

QUESTION 25

```
set payload {CACHE :: payload}
}
```

Which two profiles should be used on the virtual server? (Choose two.)

- A. http-transparent
- B. http-compression
- C. http
- D. webacceleration
- E. stream

Correct Answer: C, D

Section:

QUESTION 26

A design requires the LTM device to become HA standby when the one of the two physical interfaces on the External trunk is down. The External trunk is an interface on the External VLAN.

Which TMOS command enables this behavior?

- A. tmsh modify net van External failsafe enabled
- B. tmsh create sys ha-group External trunks add Externally
- C. tmsh create sys ha-group External trunks add External threshold 2 weight 101
- D. tmsh create sys ha-group External trunks add (External(attribute percent up-members 100))

Correct Answer: C



Section:

QUESTION 27

Traffic to a pool of SFTP servers that share storage must be balanced by an LTM device. What are the required profile and persistence settings for a standard virtual server?

- A. tcp, clientsst, ftp serverssl persistence
- B. tcp, clientssl, serverssl persistence
- C. tcp, ftp - Source address persistence
- D. tcp - no persistence profile will be used

Correct Answer: C

Section:

QUESTION 28

An LTM Specialist needs to provide access to a 8BG-IP to device for a company's support person access to the BIG IP device, but are NOT allowed to change any settings All support the support remote access to the BIG-IP device, but are NOT allowed to change ant settings. All support have accounts in the company's Active Directory Which method is appropriate to provide access for the support personnel to the BIG-JP device?

- A. configure remote authentication for all users with a default user role of Guest
- B. configure remote authentication and map support personnel users to the Guest user role
- C. configure remote authentication and map support personnel users to the Operator user role
- D. configure remote authentication for all users with a default user role of Operator

Correct Answer: B

Section:

QUESTION 29

A VCMP guest has the following characteristics:

- * Resources allocated for CPU memory, network interfaces, and disk space
- * Virtual disk created
- * The guest is NOT running

The guest is NOT running in which state is the VCMP guest

- A. Offline
- B. Deployed
- C. Provisioned
- D. Configured

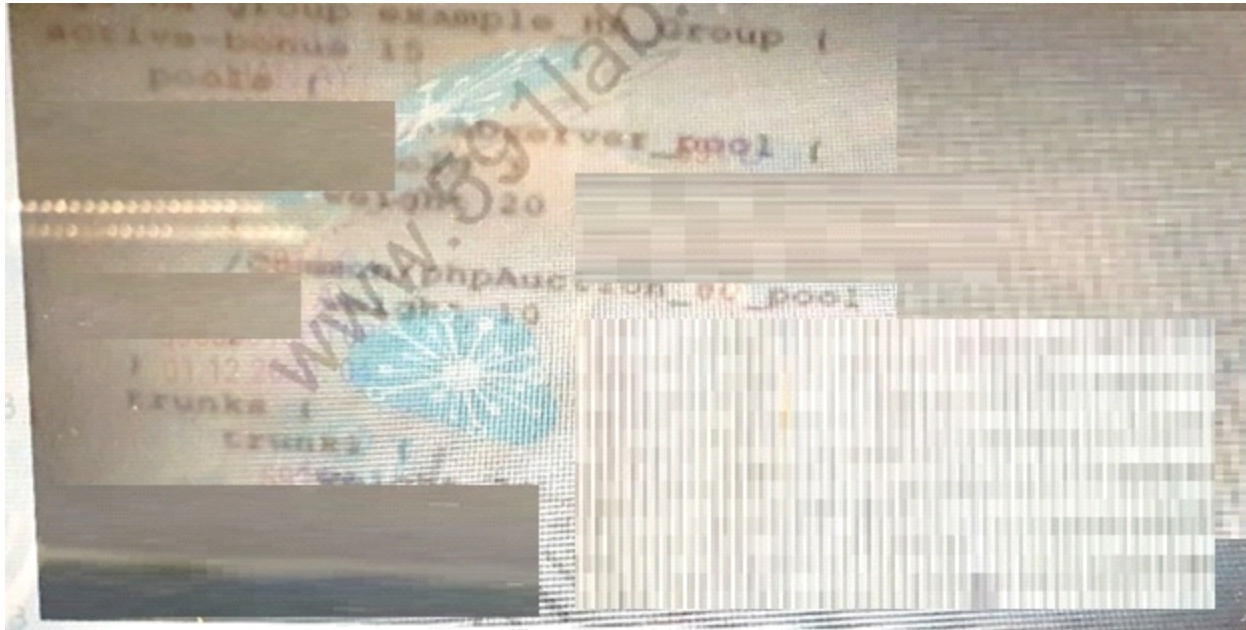
Correct Answer: C

Section:

QUESTION 30

Exhibit.





Webserver_pool consists of 6 members. phpAuction_80_pool consists of 2 members LTM1 is the current Active member. LTM1 loses connectivity to 3 of the 6 members in the webserver_pool LTM2 still has connectivity to all servers. What is the expected failover behavior?

- A. LTM1 Standby / LTM2 Standby
- B. LTM1 Active / LTM2 Active
- C. LTM1 Active / LTM2 Standby
- D. LTM1 Standby / LTM2 Active

Correct Answer: C

Section:

QUESTION 31

The web application team requests help from the LTM Specialist to Improve the performance of their web sites that are load balanced by the F5 LTM device with a Standard Virtual Server. Which virtual server type will improve the performance of the web application servers?

- A. Performance (HTTP)
- B. Performance (Layer 4)
- C. Stateless
- D. Forwarding (IP)

Correct Answer: A

Section:

QUESTION 32

An LTM Specialist decides to offload SSL traffic on the LTM device instead of just passing it through. The LTM Specialist needs to change the configure from a Performance (Layer 40 virtual server to a Standard virtual server with SSL offload.

Which two element the LTM Specialist consider when performance this task? (Choose two.)

- A. CPU load
- B. Sensitive connections
- C. Port exhaustion



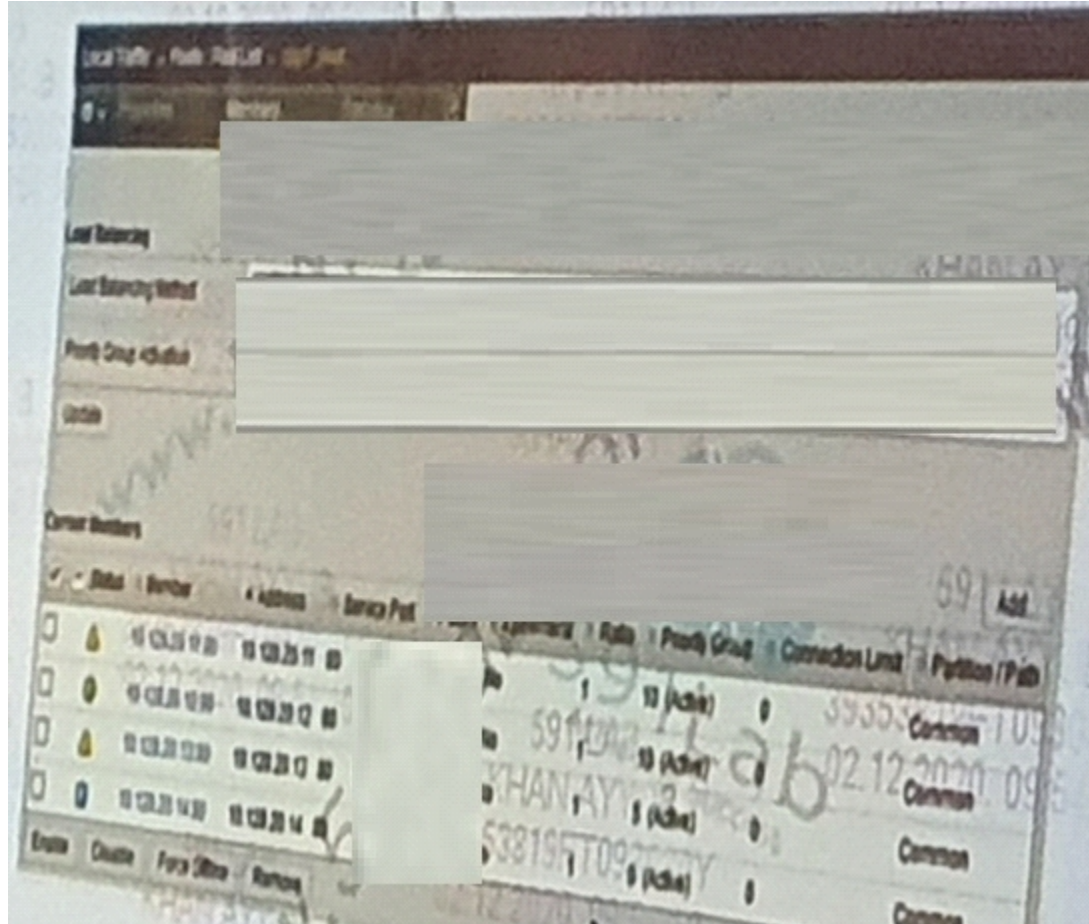
- D. Memory load
- E. Connection mirroring

Correct Answer: A, D

Section:

QUESTION 33

Refer to the Exhibit.





An LTM Specialist notices that two members in a pool are overloaded. To relieve the existing members a fourth member (10.128.20.14) is brought up. How many member will receive and process new connections?

- A. 4
- B. 3
- C. 2
- D. 1

Correct Answer: C

Section:

QUESTION 34

A virtual server is using a TCP profile based on the top-wan-optimized profile for a streaming application Users report videos are loading slowly. Which setting should be modified in the TCP profile to optimize the application?

- A. Disable Slow Start
- B. Disable Selective ACKs

- C. Disable Nagle's Algorithm
- D. Disable Reset on Timeout

Correct Answer: A

Section:

QUESTION 35

An LTM device is experiencing a high volume of traffic. The virtual server is struggling under the load. The problem appears to be on the server side connections. The virtual server is accepting connections. The virtual server is accepting connections on https and is configured with an SSL profile and http pool.

What should be added to increase the performance of the device?

- A. an HTTP Compression profile
- B. a One Connect profile
- C. smaller key to the SSL profile
- D. a SPDY profile

Correct Answer: B

Section:

QUESTION 36

A LTM device needs to load balance active and passive FTP traffic while using only a single virtual server.

Which virtual server type should an LTM Specialist configure on the LTM device?

- A. Forwarding (Layer 2)
- B. Standard
- C. Stateless
- D. DHCP relay
- E. Forwarding (IP)

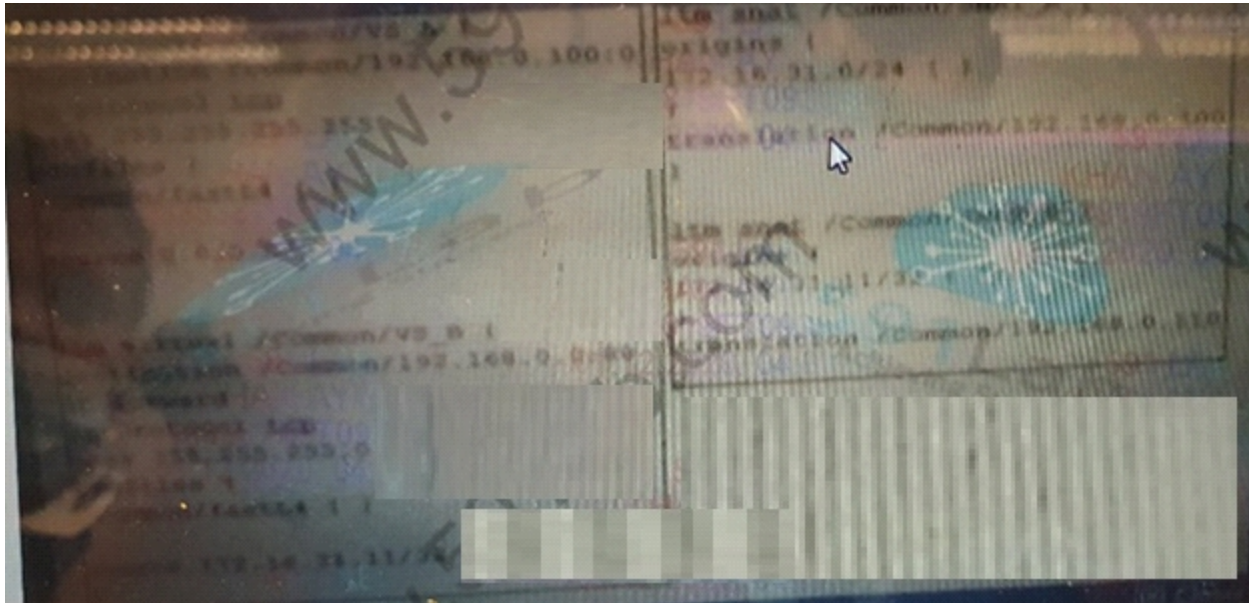
Correct Answer: E

Section:

QUESTION 37

Refer to the exhibit.





An LTM Specialist has multiple SNAT and virtual server objects configured as in the bigip.conf shown. The LTM Specialist tests a connection from a client with IP 172.163.31.11 to 192.168.0.100:80. Which two objects will show an increase in Local Traffic statistics connections?

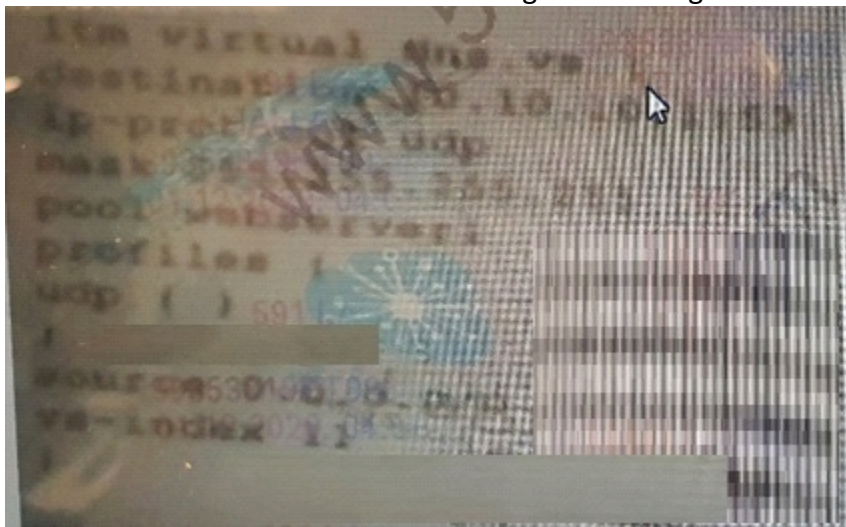
- A. VS_A&SNAT_B
- B. VS_B&SNAT_B
- C. VS_B & SNAT A
- D. VS_A & SNAT A

Correct Answer: A
Section:



QUESTION 38

A new DNS virtual server has been configured. Testing reveals that DNS server has failed to accept DNS over TCP. The configuration of the virtual server is as follows:



Which action should be taken to correct this issue?

- A. create a new virtual server with the service port of 53 and the protocol set to TC
- B. change the profile set on the virtual server To TCP/UDP
- C. change the profile set on the virtual server to TCP
- D. add a TCP prone to the existing virtual server.

Correct Answer: A

Section:

QUESTION 39

A BIG IP system load balances connections to a web application. A TCP-based Denial of Service attack against the web application is occurring, which has caused very high memory utilization on the LTM device due to stale TCP connections.

Which TCP profile option should be used to reduce memory utilization?

- A. Idle timeout
- B. Reset on timeout
- C. Slow Start
- D. Multipath TCP

Correct Answer: A

Section:

QUESTION 40

A customer wants to select the pool for an application based on information found in the path of the URL.

For example:

`http://www.example.com/app 1 should be sent to the app 1 pool`

`http://www.exampie.com/app 2 should be sent to the app2 pool`

Which two profiles need to be assigned to the virtual server? (Choose two.)

- A. Client SSL
- B. Persistence
- C. TTP Compression
- D. HTTP
- E. TCP

Correct Answer: D, E

Section:

QUESTION 41

An LTM device provides load balancing to a web application? The LTM device has two dual-core processors and a licensed SSL Transactions Per Second (TPS) limit of 500 CMP is enabled.

TLS connections are used between client systems and virtual servers on the LTM device, as well as from the LTM device to servers used as part of LTM pool.

TLS enabled virtual servers utilize certificates based on 2048-bit keys

During a peak period, 2560 new TLS transactions per second are attempted to the web application via the LTM device.

What will happen in this scenario?

- A. 560 new TLS transactions will be silently discarded due to the SSL TPS license limit
- B. Nothing: TLS transactions per second are NOT affected by an SSL TPS license limit
- C. 2060 new TLS transactions will be silently discarded due to the SSL TPS license limit
- D. Nothing: 2560 TLS transactions per second is within the SSI TPS license limit.

Correct Answer: A

Section:

QUESTION 42



An LTM Specialist is setting up a new HTTPS virtual server to decrypt client traffic. SNAT the traffic and send the encrypted traffic to the pool member, the client's IP address must be included in the traffic sent to the pool member.

What is a complete set of profiles that must be configured for the virtual server to meet these requirements?

- A. TCP, Client SSL, Server SSL
- B. TCP, Server SSL, HTTP
- C. TCP, Client SSL, HTTP
- D. TCP, Client SSL, Server SSL, HTTP

Correct Answer: D

Section:

QUESTION 43

A new web application is being deployed Mutual SSL authentication must be used to authenticate clients.

Which of the following two tasks must be completed to meet the requirements? (Choose two)

- A. configure the server SSL profile with 'Client Certificate' Set to require
- B. configure the client SSL profile with 'Client Certificate' set to require
- C. instruct the desktop team to update the web browser to the most recent release
- D. generate a CSR to register a certificate with the CA
- E. configure the client SSL profile with the Trusted .Certificate Authorities

Correct Answer: B, E

Section:



QUESTION 44

An LTM Specialist needs to provide statistics regarding the round-trip time between the clients and the servers.

Which metric should be part of the analytics profile to provide that information?

- A. Page Load Time
- B. User Sessions
- C. Max TPS and Throughput
- D. Response Codes

Correct Answer: A

Section:

QUESTION 45

In an iApp, which configuration protects against accidental changes to an application Services configuration?

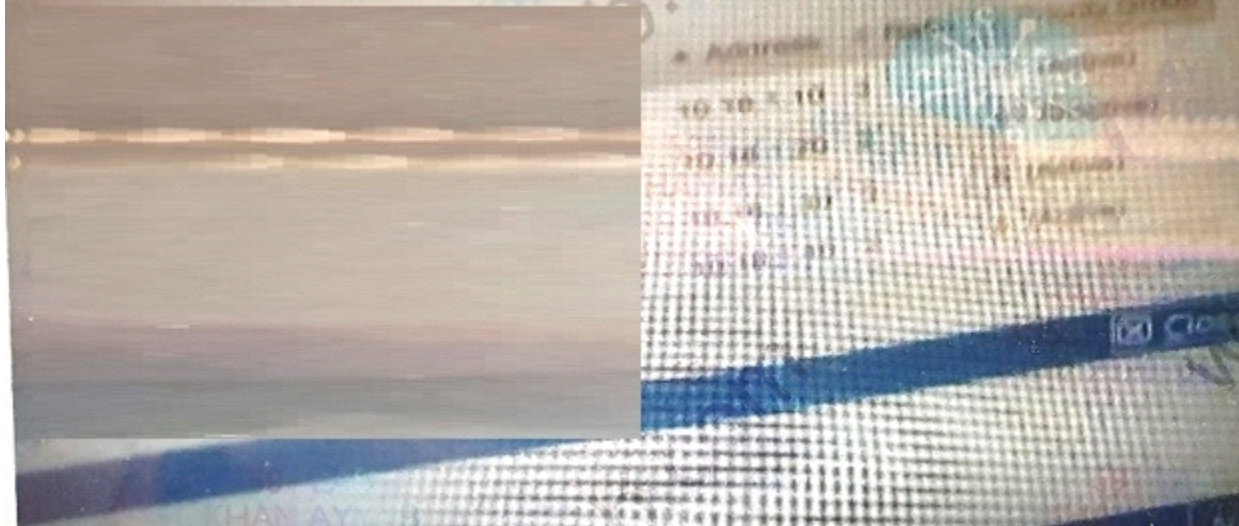
- A. Components
- B. Strict Updates
- C. Name
- D. Template

Correct Answer: B

Section:

QUESTION 46

Refer to the exhibit.



A pool is configured with four members. A user has a current connection established with 10.18.1.40. The virtual server has a persistence Profile configured.

- A. 10.18.1.10
- B. 10.18.1.20
- C. 10.18.1.40
- D. 10.18.1.30

Correct Answer: C

Section:

**QUESTION 47**

A BIG IP device delivers the online shopping website <https://shop.example.com>. Two pool members handle the traffic. An iRule directs requests with the hip parameter 'environment=development' to a third pool member for a staging environment.

Which combination of profiles is needed at minimum?

- A. tcp, http, request logging
- B. tcp, http, clientssl
- C. tcp, clientssl, serverssl
- D. http, clientssl, persistence

Correct Answer: B

Section:

QUESTION 48

An LTM Specialist configures a new virtual server with a single pool member. The LTM Specialist has NOT defined a health monitor for the pool, pool member or node.

What is the status of the virtual server?

- A. Available (Enabled)
- B. Offline (Disabled)
- C. Unavailable (Enabled)
- D. Unknown (Enabled)

Correct Answer: D

Section:

QUESTION 49

An LTM Specialist has recently taken over administration of an LTM device that has experienced resource availability issues. The LTM device will need to be solely used for load balancing and SSL offload. Previously, the LTM device was also used to provide statistical analysis of application traffic. However, that functionality has been moved to a third party solution. Based on the output below, which configuration change should be made to ensure the LTM module receives the most amount of resources?



- A. Provision AVR to Minimum. Provision LTM at Maximum
- B. Provision AVR to none. Provision LTM to Dedicated
- C. Provision AVR to Minimum, Provision LTM to Dedicated
- D. Provision LTM to Dedicated, Provision AVR to Dedicated

Correct Answer: B

Section:

QUESTION 50

An LTM Specialist has noticed in the audit log that there are numerous attempts to log into the Admin account. These attempts are sourced from a suspicious IP address range to the Configuration Utility of the LTM device. How should the LTM Specialist block these attempts?

- A. add the permitted source IP addresses to the httpd allow list via tmsh
- B. add the suspicious source IP addresses to the httpd deny list via tmsh
- C. add the suspicious source IP addresses to the httpd deny list via Configuration Utility
- D. add the permitted source IP addresses to the allow list via Configuration Utility

Correct Answer: A

Section:

QUESTION 51

A Client makes the request displayed below to the application server. Which virtual server type should an LTM Specialist use to load balance based on the URI?

- A. Forwarding (Layer 2)
- B. Stateless
- C. Standard
- D. Performance (Layer 4)



Correct Answer: C

Section:

QUESTION 52

A virtual server with SNAT automap enabled selects pool member 10.20.0.10.443 for the server-side flow. The client side flow source IP is 192.168.0.10 .

```
root@(bigip1)(cfg-sync In Sync)(Active)(/Common)(tmros)# list net self one-line
net self selfv1 { address 10.20.0.1/24 traffic-group traffic-group-local-only vlan v1 }
net self selfv1f { address 10.20.0.2/24 floating enabled traffic-group traffic-group-1 unit 1 vlan v1 }
net self selfv2 { address 10.50.0.1/24 traffic-group traffic-group-local-only vlan v2 }
net self selfv2f { address 10.50.0.2/24 floating enabled traffic-group traffic-group-1 unit 1 vlan v2 }
```

Which source IP should be expected in the server-side connection?

- A. 10.20.0.1
- B. 10.50.0.2
- C. 10.20.0.2
- D. 192.168.0.10

Correct Answer: C

Section:

QUESTION 53

An LTM Specialist plans to enable connection mirroring for a virtual server in an HA environment.

What must the LTM Specialist consider before implementing the configuration change?

- A. Impact on system performance that might be noticeable
- B. The add-on license that is required for this feature to be available
- C. Creating the required separate interface for connection mirroring
- D. Decreased number of possible concurrent connections to that virtual server



Correct Answer: A

Section:

Explanation:

Connection mirroring will bring performance consumption

QUESTION 54

An LTM Specialist must reconfigure a BIG-IP system that load balances traffic to a web application. The security department has informed the LTM Specialist that the following cipher string must be used for TLS connections from BIG-IP to the web application.

NATIVE:IMDS:EXPORT:IDHE:EDH@SPEED

In which virtual server profile should the cipher string be configured?

- A. Server SSL CB. Client SSL
- B. SPDY profile
- C. Rewrite profile

Correct Answer: A

Section:

Explanation:

Require SSL and flow F5 to server, server ssl

QUESTION 55

AN LIM Specialist must upgrade the VCMP Guest active/standby LTM pair from version 11.3 to 11.5.3 on two VCMP Hosts. where should the LTM Specialist import the latest 11.5.3 ISO images?

- A. to the primary VCMP Host and the active Guest instance
- B. to both VCMP Hosts
- C. to the secondary vCMP Host and the standby Guest instance
- D. to the VCMP Guest instances

Correct Answer: D

Section:

QUESTION 56

An LTM Specialist needs to configures virtual server that uses PVA or OPVA Which virtual server type should be used?

- A. Stateless
- B. Performance (HTTP)
- C. Standard
- D. Performance (Layer 4)

Correct Answer: D

Section:

QUESTION 57

A virtual server configuration for traffic destined to a server is as shown:

VS Name	Destination	Service port	Source
MyVS1	192.168.1.101/32	80	0.0.0.0/0
MyVS2	192.168.1.101/32	*	192.168.2.0/24
MyVS3	192.168.1.101/32	21	192.168.2.0/25
MyVS4	192.168.1.0/24	*	0.0.0.0/0

FTP traffic is destined to the 192.168.1.101 server from the source of 192.168.2.129. Based on precedence, which virtual server accepts this traffic?

- A. MyVS4
- B. MyV53
- C. MyVS1
- D. MyVS2

Correct Answer: D

Section:

QUESTION 58

A Web Server Administrator uses a manual process to display a page when the service is down. Which feature on the LTM device should be used to automate the service down page?



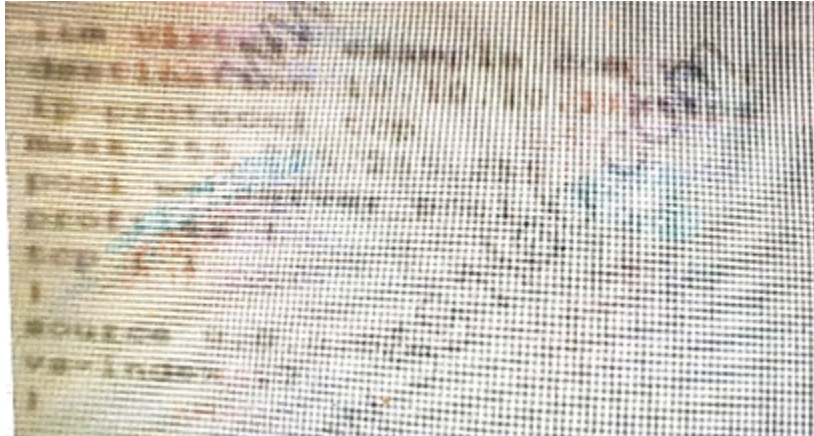
- A. Enable Request Queueing
- B. Action on Service Down
- C. Redirect Rewrite
- D. Fallback Host

Correct Answer: D

Section:

QUESTION 59

An SSL application is being migrated to the LTM device. Both encrypted and unencrypted traffic are accepted by the server. The virtual server configuration is as follows:



Which LTM device profile should be used on the LTM device to reduce the CPU load on the current?

- A. Protocol
- B. serverssl
- C. clientsssl
- D. stream

Correct Answer: C

Section:

QUESTION 60

An LTM device needs to be configured a virtual server. The application requires SSL encryption from the client to the server and an X-Forwarded-For added by the LTM device. Which virtual server type should the LTM Specialist use?

- A. Forwarding (IP)
- B. Performance (HTTP)
- C. Standard
- D. Stateless
- E. Performance

Correct Answer: C

Section:

QUESTION 61

To improve application security, an LTM Specialist must configure a BIG application access. The BIG IP system to authenticate the client certificate before permitting application access. The BIG-IP system must also support the

ability to red to redirect users to a certificate enrolment system without generating a browser error.
Within the Client SSL profile, which value should the LTM Specialist select for the Client Certificate option?

- A. Require
- B. Request
- C. Demand
- D. ignore

Correct Answer: A
Section:

QUESTION 62

A virtual server is configured to handle https traffic. The clientssl profile is configured to use a2048-bit RSA key. Due to security requirements, is the LTM Specialist needs to use a 4096-bit RSA key in the future. What two effects will this change have on the BIG-IP device? (Choose two)

- A. Increase of CPU usage on the BIG-IP device
- B. Decrease to 20% of licensed TPS
- C. Decrease to 90% of licensed TPS
- D. Increased of concurrent connection on client-side
- E. Increase of TLS Renegotiation

Correct Answer: A, B
Section:

QUESTION 63

An application requires load balancing functionality. The application must be encrypted to the client. Certain content must be manipulated by the following IRule:



```
when HTTP_REQUEST {
  set replace_content 0
  if ([HTTP:url] contains "/atoc/") {
    set replace_content 1
  }
}

when HTTP_RESPONSE {
  if ([replace_content equals "1"]) {
    # Disable the stream filter by default
    STREAM::disable
    # Check if response type is text
    if ([HTTP:header:Content-Type] contains "text" and [HTTP:header:"User-Agent"]
    contains "****") {
      # Replace
      STREAM::expression "0123xyz0 01560xyz0"
      # Enable the stream filter for this response only
      STREAM::enable
    }
  }
}
```

Which set of profiles must be applied to the virtual server?

- A. TCP, HTTP server SSL Stream
- B. TCP, HTTP, Client SSL, Stream
- C. TCP, HTTP, OnceConnect, Stream
- D. Fast L4, HTTP server SSL Stream

Correct Answer: B

Section:

Explanation:

Client encryption is required , clientssl, irule contains HTTP events and stream execution, http profile stream profile.

