

Microsoft.Premium.98-349.by.VCEplus.262q

Number: 98-349 VCEplus
Passing Score: 800
Time Limit: 120 min
File Version: 10.9



Exam Code: 98-349
Exam Name: Windows Operating System Fundamentals
Certification Provider: Microsoft
Corresponding Certification: MTA

Exam A

QUESTION 1

PowerShell is used to:

- A. Monitor user keystrokes.
- B. Repair damaged hard disk drive sectors.
- C. Automate a routine task.
- D. Extend the life of the battery.

Correct Answer: C

Section: (none)

Explanation

Explanation/Reference:

QUESTION 2

Windows Aero is a:

- A. Pointing device
- B. Device driver
- C. Desktop theme
- D. Windows application

Correct Answer: C

Section: (none)

Explanation

Explanation/Reference:

www.VCEplus.io

QUESTION 3

Which describes the purpose of Power Saver mode for a portable computer?

- A. To lock the computer when it is idle
- B. To prevent unauthorized programs from consuming resources
- C. To protect the display from burned-in images
- D. To shut down idle devices to conserve battery charge

Correct Answer: D

Section: (none)

Explanation

Explanation/Reference:

QUESTION 4

You want to change your default home page in Internet Explorer. In which location should you modify settings?

- A. Trusted Sites
- B. View
- C. Internet Options
- D. Favorites

Correct Answer: C

Section: (none)

Explanation

Explanation/Reference:

QUESTION 5

Every time you insert a music CD, you receive a dialog box that asks which action you want Windows to perform. Which should you configure so that your personal computer automatically identifies an audio CD and starts playing music?

- A. The Autoplay settings
- B. The Ease of Access settings
- C. A desktop gadget
- D. The Personalization settings

Correct Answer: A

Section: (none)

Explanation

Explanation/Reference:

QUESTION 6

You need to modify the time displayed in the system tray. Which Control Panel feature should you use?

- A. Appearance and Personalization
- B. Display Properties
- C. Administrative Tools
- D. Clock, Language, and Region

Correct Answer: D

Section: (none)

Explanation

Explanation/Reference:

QUESTION 7

You insert a software installation DVD into your Windows 10 computer. The DVD does not launch automatically. You need to perform a manual installation. What should you do?

- A. From Control Panel, use Programs.
- B. From Control Panel, use Ease of Access.
- C. Browse the contents of the hard disk drive and locate the Program Files folder.
- D. Browse the contents of the DVD and locate the Setup file.

Correct Answer: D

Section: (none)

Explanation

Explanation/Reference:

QUESTION 8

A Windows service is a:

- A. Program or process that runs in the background and does not require user intervention.
- B. Hardware driver that provides support to a specific device.
- C. Program or process that runs in the foreground.
- D. Hardware driver that provides support to the operating system.

www.VCEplus.io

Correct Answer: A
Section: (none)
Explanation

Explanation/Reference:

QUESTION 9

Which Windows feature should you use to protect a computer against spyware?

- A. Group Policy
- B. User Account Control
- C. Windows Defender
- D. Encrypting File System

Correct Answer: C
Section: (none)
Explanation

Explanation/Reference:

QUESTION 10

Which feature allows you to create a new virtual application?

- A. Application Virtualization Sequencer
- B. Windows Installer
- C. Remote Desktop Connection
- D. Windows Virtual PC

Correct Answer: A
Section: (none)
Explanation

Explanation/Reference:

QUESTION 11

Which action will trigger a user account control (UAC) prompt in Windows?

- A. Accessing the Internet
- B. Changing the time zone
- C. Installing a new program
- D. Restarting Windows
- E. Changing settings in the Display Properties dialog box

Correct Answer: C
Section: (none)
Explanation

Explanation/Reference:

QUESTION 12

Where will you find information about removing computer viruses?

- A. Help and Support

www.VCEplus.io

- B. System Restore
- C. Disk Cleanup
- D. System Information

Correct Answer: A
Section: (none)
Explanation

Explanation/Reference:

QUESTION 13

A Windows 7 library:

- A. Organizes user files from disparate locations.
- B. Makes copies of user files in a central location.
- C. Encrypts files by using the Encrypting File System (EFS).
- D. Restores files from system backup.

Correct Answer: A
Section: (none)
Explanation

Explanation/Reference:

QUESTION 14

You need to upgrade your computer from the FAT file system to an NTFS file system.
What should you do?

- A. Use the Backup and Restore tool.
- B. Clear the hard disk drive by using the Format tool.
- C. Use the Convert C:/fs:ntfs command.
- D. Run the Windows Easy Transfer tool.

Correct Answer: C
Section: (none)
Explanation

Explanation/Reference:

QUESTION 15

The Encrypting File System (EFS) is a:

- A. Digital document that verifies the identity of a user.
- B. Specially made hard disk drive that requires a password.
- C. Sequence of characters used to encrypt and decrypt information stored in a folder.
- D. Feature that enables files to be stored in a secure format.

Correct Answer: D
Section: (none)
Explanation

Explanation/Reference:

QUESTION 16

You need to configure a folder that allows everyone in your department to view and edit the files in the folder. You also need to ensure that users outside the department cannot access the files. What should you do?

- A. Grant access to a single user by using the Share With menu.
- B. Grant read access to specific people by using the Share With menu.
- C. Place the files in one of the Windows public folders.
- D. Grant read/write access to specific people by using the Share With menu.

Correct Answer: D

Section: (none)

Explanation

Explanation/Reference:

QUESTION 17

You need to configure a folder that allows everyone in your group to view and modify files. Which item in the Share With menu should you use?

- A. Specific People
- B. Nobody
- C. Homegroup (Read/Write)
- D. Homegroup (Read)

Correct Answer: C

Section: (none)

Explanation

Explanation/Reference:

www.VCEplus.io

QUESTION 18

Windows hides some files by default to:

- A. Avoid accidental modification or deletion of system files.
- B. Protect the confidentiality of the contents of files.
- C. Improve access to system files.
- D. Save disk space.

Correct Answer: A

Section: (none)

Explanation

Explanation/Reference:

QUESTION 19

You need a script to run at a specific time. Which Windows component should you use?

- A. Task Manager
- B. Device Manager
- C. Task Scheduler
- D. Event Viewer

Correct Answer: C

Section: (none)

Explanation

Explanation/Reference:

QUESTION 20

You need to find out whether your computer has received the most recent critical Windows updates. What should you do?

- A. From the Computer Management console, view Services and Applications.
- B. From Windows Update, select View Update History.
- C. From Administration Tools, view Event Logs.
- D. From Control Panel, use Programs.

Correct Answer: B

Section: (none)

Explanation

Explanation/Reference:

QUESTION 21

Your computer is slow to start, and file access in Windows is slow. Which Windows feature should you use to improve performance?

- A. System Restore
- B. windows Defender
- C. Disk Defragmenter
- D. Disk Format

Correct Answer: C

Section: (none)

Explanation

Explanation/Reference:

www.VCEplus.io

QUESTION 22

Which feature ensures that your personal computer always has the latest patches and fixes for the operating system?

- A. Reliability and Performance Monitor
- B. Programs and Features
- C. System Configuration Utility
- D. Windows Update

Correct Answer: D

Section: (none)

Explanation

Explanation/Reference:

QUESTION 23

Which Windows component should you use to make a copy of all files on your computer?

- A. Disk Cleanup
- B. System Image Backup
- C. System Restore
- D. Disk Management

Correct Answer: B

Section: (none)

Explanation

Explanation/Reference:

QUESTION 24

Which two editions of Windows 7 support Windows XP mode? (Each correct answer presents a complete solution. Choose two.)

- A. Home Premium
- B. Starter
- C. Ultimate
- D. Professional

Correct Answer: CD

Section: (none)

Explanation

Explanation/Reference:

Using Windows XP Mode, you can run programs that were designed for Windows XP on computers running Windows 7 Professional, Enterprise, or Ultimate editions.

QUESTION 25

You plan to upgrade your computer to Windows 7.

Which tool should you use to find out whether your current applications will run on Windows 7?

- A. Application Compatibility Toolkit
- B. Windows Anytime Upgrade
- C. Windows Update
- D. Windows Service Pack

Correct Answer: A

Section: (none)

Explanation

Explanation/Reference:

QUESTION 26

You need to install Windows 7 over an existing version of Windows.

Which type of installation should you use to retain all your files, settings, and programs on your computer?

- A. Use the Windows Easy Transfer tool, and select Custom (advanced).
- B. Use the Windows 7 installation disk to perform a system repair.
- C. Use the Windows Easy Transfer tool, and select Upgrade.
- D. Use the Windows 7 installation disk to perform a clean installation.

Correct Answer: C

Section: (none)

Explanation

Explanation/Reference:

QUESTION 27

You need to find out the amount of physical memory available to Windows 7.

Which command should you use?

- A. sysedit.exe
- B. msinfo32.exe
- C. msconfig.exe

www.VCEplus.io

D. wimgmt.msc

Correct Answer: B

Section: (none)

Explanation

Explanation/Reference:

QUESTION 28

The Windows 7 USB/DVD Download Tool allows you to:

- A. Create a bootable version of Windows 7 on a USB stick or a writable DVD.
- B. Create backups of data files from your computer to a USB stick or a writable DVD.
- C. Install Microsoft NET Framework on a USB stick or a writable DVD.
- D. Download files from the Internet directly to a USB stick or a writable DVD.

Correct Answer: A

Section: (none)

Explanation

Explanation/Reference:

QUESTION 29

You want to upgrade your computer from Windows Vista to Windows 7.
What is the minimum processor speed required to run a 64-bit version of Windows 7?

- A. 800 MHz
- B. 1.0 GHz
- C. 1.2 GHz
- D. 1.8 GHz

Correct Answer: B

Section: (none)

Explanation

Explanation/Reference:

QUESTION 30

Which two features are supported by the Infrared Data Association (IrDA) protocol? (Each correct answer presents a complete solution. Choose two.)

- A. Data can be transferred across short distances.
- B. One computer can control another computer through a wireless connection.
- C. Some features of another computer can be controlled by using a remote control unit.
- D. The computer can identify Bluetooth devices.

Correct Answer: AC

Section: (none)

Explanation

Explanation/Reference:

QUESTION 31

Which feature allows you to change the display resolution of a computer monitor?

www.VCEplus.io

- A. Computer Management Console
- B. System Configuration Tool
- C. Appearance and Personalization
- D. Device Manager

Correct Answer: C
Section: (none)
Explanation

Explanation/Reference:

QUESTION 32

Which file system is designed for transfer of large files between a personal computer and flash devices?

- A. FAT16 file system
- B. FAT32 file system
- C. exFAT file system
- D. NTFS file system

Correct Answer: C
Section: (none)
Explanation

Explanation/Reference:

QUESTION 33

Which two steps should you perform to install a local printer that connects directly to your personal computer? (Each correct answer presents part of the solution. Choose two.)

- A. Connect the printer to an available USB port and allow Windows to locate and install the appropriate driver.
- B. Connect the Ethernet cable from your printer to the RJ45 connector on the personal computer and follow the Windows prompts.
- C. Follow the manufacturer's directions by using the installation CD provided along with the printer.
- D. Use the Add Network Printer feature from Control Panel.

Correct Answer: AD
Section: (none)
Explanation

Explanation/Reference:

QUESTION 34

Which feature allows you to pause the printing of all documents waiting to print on a specific printer?

- A. The Print Setup page
- B. The printer's Properties page
- C. The printer's shortcut menu
- D. The Computer Management console

Correct Answer: C
Section: (none)
Explanation

Explanation/Reference:

QUESTION 35

Which Windows feature allows secure printing over the Internet?

- A. Secure Transfer Protocol (STP)
- B. Internet Printing Protocol (IPP) by using HTTPS
- C. Voice over Internet Protocol (VoIP)
- D. Web2Print

Correct Answer: B

Section: (none)

Explanation

Explanation/Reference:

QUESTION 36

You want to repair Windows by using the Windows 7 System Recovery Disc. Before you begin, which files should you back up to protect your personal data?

- A. All files in the Program Files directory.
- B. All files in the Windows directory.
- C. All files in drive C.
- D. Everything in My Documents.

Correct Answer: D

Section: (none)

Explanation

Explanation/Reference:

QUESTION 37

Which Windows feature allows you to request that someone else control your computer from their computer?

- A. Remote Assistance
- B. Action Center
- C. Sync Center
- D. Connect Now

Correct Answer: A

Section: (none)

Explanation

Explanation/Reference:

QUESTION 38

Which Windows feature should you use to find patches for Internet Explorer?

- A. Sync Center
- B. System Information
- C. Internet Properties
- D. Windows Update

Correct Answer: D

Section: (none)

Explanation

Explanation/Reference:

www.VCEplus.io

QUESTION 39

A service pack is software that:

- A. Includes all previously released important and recommended Windows Updates.
- B. Cleans the registry and file system.
- C. Includes a reinstallation of the operating system.
- D. Enables remote servicing.

Correct Answer: A

Section: (none)

Explanation

Explanation/Reference:

QUESTION 40

You attempt to update your video driver. Your screen stops responding. You need to be able to restore the previous video driver. Which Windows feature should you use?

- A. Disk Defragmenter
- B. Disk Cleanup
- C. Check Disk (Chkdsk)
- D. Safe Mode

Correct Answer: D

Section: (none)

Explanation

Explanation/Reference:

www.VCEplus.io

QUESTION 41

You need to be able to access a file stored in a shared folder on your network even when you are disconnected from the network. What should you do?

- A. Configure the folder permissions as Read/Write.
- B. Make the folder available offline.
- C. From Control Panel, use Network and Internet.
- D. Type the IP address of the network computer in the Address field of Internet Explorer.

Correct Answer: B

Section: (none)

Explanation

Explanation/Reference:

QUESTION 42

You need to be able to recover an encrypted file even if you lose the key. What should you do?

- A. Use the Encrypting File System (EFS).
- B. Use System Restore to create a system restore point.
- C. Use Bitlocker encryption.
- D. Create a recovery certificate and store it on a portable device.

Correct Answer: D

Section: (none)

Explanation

Explanation/Reference:

QUESTION 43

Which is the largest single file that you can store on a FAT32 file system?

- A. 4GB
- B. 8GB
- C. 16GB
- D. 32GB

Correct Answer: A

Section: (none)

Explanation

Explanation/Reference:

QUESTION 44

The purpose of a Public folder is to:

- A. share files with only one person on a network.
- B. share files with everyone on a network.
- C. share files with a selected group of people on a network.
- D. back up files to a location on a network.

Correct Answer: B

Section: (none)

Explanation

Explanation/Reference:

QUESTION 45

You want to view a folder of pictures from an external hard disk drive in your Windows 7 Pictures library. What should you do?

- A. Use the Include in Library menu to add the folder in Windows Explorer.
- B. Create a connection to the folders by using the Network and Sharing Center.
- C. Access the pictures by using a shared folder.
- D. Enable password-protected sharing.

Correct Answer: C

Section: (none)

Explanation

Explanation/Reference:

QUESTION 46

BitLocker prevents:

- A. The operating system from overwriting protected sectors on the hard disk drive.
- B. Unauthorized users from accessing the Internet.
- C. Unauthorized access to files.
- D. Programs from accessing the memory of other programs.

www.VCEplus.io

Correct Answer: C
Section: (none)
Explanation

Explanation/Reference:

QUESTION 47

You attempt to install Windows 7 on your personal computer. You receive an error message stating that your product key is not valid. What is causing the error?

- A. You accidentally entered the product key in lower case.
- B. Your product key does not match the version of Windows that you are installing.
- C. The product key you are trying to use has expired.
- D. You reformatted your hard disk drive before you installed Windows.

Correct Answer: B
Section: (none)
Explanation

Explanation/Reference:

QUESTION 48

You need to allow others to access your Windows 7 computer by using the Remote Desktop connection. What should you do?

- A. Click Turn on network discovery in Network and Sharing Center.
- B. Enable Remote Desktop Connections in System Properties.
- C. Start the Remote Desktop Connection client in Accessories.
- D. Set the security level to medium in Internet Options.

Correct Answer: B
Section: (none)
Explanation

Explanation/Reference:

QUESTION 49

You need to migrate files and settings from a Windows XP computer to another computer that runs Windows 7. Which tool should you use?

- A. Windows Easy Transfer
- B. Windows 7 Compatibility Checker
- C. Windows Upgrade Advisor
- D. Application Compatibility Toolkit

Correct Answer: A
Section: (none)
Explanation

Explanation/Reference:

QUESTION 50

Which Windows feature will allow you to run automated scripts on a remote computer?

- A. Windows Remote Management
- B. Remote Access Services

www.VCEplus.io

- C. Remote Desktop Connection
- D. Virtual Private Network

Correct Answer: A
Section: (none)
Explanation

Explanation/Reference:

QUESTION 51

Which Windows 7 feature should you use to ensure that only administrators can install new software?

- A. Network and Sharing Center
- B. User Account Control
- C. Microsoft Management Console
- D. Ease of Access

Correct Answer: B
Section: (none)
Explanation

Explanation/Reference:

QUESTION 52

You need to manage service dependencies on your Windows 7 computer. Which feature should you use?

- A. Action Center
- B. Event Viewer
- C. Task Scheduler
- D. Computer Management Console

Correct Answer: D
Section: (none)
Explanation

Explanation/Reference:

QUESTION 53

The Windows Action Center allows you to:

- A. Choose options during system startup.
- B. View alerts and take appropriate actions to keep Windows running smoothly.
- C. View and modify settings of installed programs.
- D. Manage the documents in the print queue.

Correct Answer: B
Section: (none)
Explanation

Explanation/Reference:

QUESTION 54

Which feature allows you to run applications hosted on network file servers or web servers?

www.VCEplus.io

- A. Windows Virtual PC
- B. Remote Desktop Connection
- C. Windows Installer
- D. Application Virtualization Client

Correct Answer: D
Section: (none)
Explanation

Explanation/Reference:

QUESTION 55

Which is the fastest way to ensure that new desktop icons align into straight columns and rows?

- A. Right-click Desktop, select Properties, and then click Appearance.
- B. Right-click Desktop, select View, and then click Auto arrange icons.
- C. Right-click Taskbar, select Tile Vertically, and then click Tile Horizontally.
- D. Right-click Desktop and select Refresh.

Correct Answer: B
Section: (none)
Explanation

Explanation/Reference:

QUESTION 56

Which prevents you from establishing a Remote Desktop connection to a remote computer?

- A. Incorrect monitor settings in Device Manager.
- B. Incorrect screen resolution in the Display Properties dialog box.
- C. Incorrect port settings in Windows Firewall.
- D. Incorrect security settings in Internet Explorer.

Correct Answer: C
Section: (none)
Explanation

Explanation/Reference:

QUESTION 57

The Remote Desktop Connection is used to:

- A. search the Internet.
- B. attend a webinar.
- C. access another personal computer.
- D. conduct a Lync Online Meeting.

Correct Answer: C
Section: (none)
Explanation

Explanation/Reference:

QUESTION 58

You need to configure a mouse for a left-handed user. What should you do?

- A. Configure alternate input devices.
- B. Use Device Manager to modify settings in the Mouse Properties dialog box.
- C. Use Control Panel to modify settings in the Mouse Properties dialog box.
- D. Use the manufacturer's website to update the mouse driver.

Correct Answer: C

Section: (none)

Explanation

Explanation/Reference:

QUESTION 59

Your computer is running slower than usual.

Where should you look to find out which applications are consuming the maximum number of resources?

- A. Administrative Tools
- B. Device Manager
- C. System Tray
- D. Task Manager
- E. Network and Sharing Center

Correct Answer: D

Section: (none)

Explanation

Explanation/Reference:

www.VCEplus.io

QUESTION 60

You want to connect to a wireless access point.

You need to view a list of available networks.

Which two actions should you perform? (Each correct answer presents a complete solution. Choose two.)

- A. Click the network icon in the notification area.
- B. From Control Panel, use Windows Mobility Center.
- C. From Control Panel, use Network and Sharing Center.
- D. From Control Panel, use Sync Center.
- E. From Control Panel, use Ease of Access.

Correct Answer: AC

Section: (none)

Explanation

Explanation/Reference:

QUESTION 61

What is the maximum size of a virtual hard disk?

- A. 2 terabytes
- B. 5 terabytes
- C. 16 terabytes
- D. 500GB

Correct Answer: A

Section: (none)

Explanation

Explanation/Reference:

QUESTION 62

Which online service allows you to store and retrieve files over the Internet?

- A. Windows Future Storage
- B. Windows Live SkyDrive
- C. Windows Media Center
- D. Windows Storage Server

Correct Answer: B

Section: (none)

Explanation

Explanation/Reference:

QUESTION 63

Which feature allows you to manually configure a hardware device?

- A. Windows Task Manager
- B. Ease of Access
- C. Device Manager
- D. Registry Editor

Correct Answer: C

Section: (none)

Explanation

Explanation/Reference:

QUESTION 64

You have several active jobs in the print queue.

You need to view the print queue.

What should you do?

- A. Use the Printer icon on the system tray.
- B. Use the Windows Task Manager.
- C. Click the Print button in the application that is printing.
- D. Use the Computer Management console.

Correct Answer: A

Section: (none)

Explanation

Explanation/Reference:

QUESTION 65

Where should you view the list of services on your Windows 7 computer?

- A. From the Windows Task Manager dialog box
- B. From the Windows Registry

www.VCEplus.io

- C. From the System Properties dialog box
- D. From the Windows Action Center

Correct Answer: A
Section: (none)
Explanation

Explanation/Reference:

QUESTION 66

Which Windows feature allows you to run a program on your computer that is installed on another computer?

- A. Windows Virtual PC
- B. Microsoft Application Virtualization
- C. Remote Desktop Connection
- D. System Center Service Manager

Correct Answer: B
Section: (none)
Explanation

Explanation/Reference:

QUESTION 67

Which feature should you use to restrict certain actions only to an administrator account on a Windows 7 computer?

- A. Windows Experience Index
- B. User Account Control
- C. BitLocker
- D. Computer Management

Correct Answer: B
Section: (none)
Explanation

Explanation/Reference:

QUESTION 68

You have a legacy application that must be used in Windows 10.
Which feature should you use if the legacy application runs poorly or fails to run?

- A. Programs in Control Panel
- B. Windows Installer
- C. Windows Easy Transfer
- D. Program Compatibility Assistant

Correct Answer: D
Section: (none)
Explanation

Explanation/Reference:

QUESTION 69

You need to find out whether your computer can run a program that performs resource-intensive tasks.
Which Windows feature should you use?

www.VCEplus.io

- A. System Configuration Utility
- B. Memory Diagnostics Tool
- C. Reliability and Performance Monitor
- D. Windows Experience Index

Correct Answer: D

Section: (none)

Explanation

Explanation/Reference:

QUESTION 70

Which feature ensures that the latest device drivers are installed on your computer?

- A. Reliability and Performance Monitor
- B. Windows Update
- C. Task Scheduler
- D. System configuration Utility

Correct Answer: B

Section: (none)

Explanation

Explanation/Reference:

QUESTION 71

Which feature should you use to install the most recent definitions for Windows Defender?

- A. Windows Update
- B. Sync Center
- C. Windows Installer
- D. Programs and Features

Correct Answer: A

Section: (none)

Explanation

Explanation/Reference:

QUESTION 72

Which Windows feature allows you to roll back your computer's settings to a previous date and time?

- A. System Restore
- B. Safe Mode
- C. Disk Cloning
- D. Disk Mirroring

Correct Answer: A

Section: (none)

Explanation

Explanation/Reference:

www.VCEplus.io

QUESTION 73

Which feature allows you to transfer information from your computer to your mobile phone?

- A. Windows Mobility Center
- B. Device Manager
- C. Sync Center
- D. Windows Easy Transfer

Correct Answer: B

Section: (none)

Explanation

Explanation/Reference:

Ref:<http://windows.microsoft.com/en-us/windows7/sync-music-pictures-contacts-and-calendars-with-a-mobile-device>

QUESTION 74

You have a document that you update regularly. To access it directly from a/an:

- A. folder.
- B. icon.
- C. library.
- D. shortcut.

Correct Answer: D

Section: (none)

Explanation

Explanation/Reference:

www.VCEplus.io

QUESTION 75

You need to prevent specific users from logging on to a computer from 24:00 hours to 07:00 hours. Which Control Panel feature should you use?

- A. User Account Control
- B. Administrative Tools
- C. Clock, Language, and Region
- D. Parental Controls

Correct Answer: D

Section: (none)

Explanation

Explanation/Reference:

Ref:<http://windows.microsoft.com/en-us/windows/control-when-children-use-computer#1TC=windows-7>

QUESTION 76

Which Windows feature allows you to manually control another Windows computer?

- A. Remote Control Monitor
- B. Remote Desktop Connection
- C. Remote Power Management
- D. Remote Procedure Call

Correct Answer: B

Section: (none)

Explanation

Explanation/Reference:

QUESTION 77

You plan to upgrade your computer to Windows 7.

You need to view a report that identifies potential compatibility problems with your computer's hardware, devices, and programs. Which tool should you use?

- A. Sync Center
- B. Windows Anytime Upgrade
- C. Windows Upgrade Advisor
- D. Windows Easy Transfer

Correct Answer: C

Section: (none)

Explanation

Explanation/Reference:

QUESTION 78

Which two versions of Windows 7 support the Encrypting File System (EFS) functionality? (Each correct answer presents a complete solution. Chose two.)

- A. Ultimate Edition
- B. Home Premium Edition
- C. Professional Edition
- D. Starter Edition

Correct Answer: AC

Section: (none)

Explanation

Explanation/Reference:

EFS is not fully supported on Windows 7 Starter, Windows 7 Home Basic, and Windows 7 Home Premium.

QUESTION 79

You need to remotely control another computer by using a Remote Desktop connection.

Where should you start the Remote Desktop Connection client?

- A. From the Actions menu in Windows Live Messenger
- B. From the User Accounts settings in Control Panel
- C. From the Accessories folder in All Programs
- D. From the Internet Options dialog box in Internet Explorer

Correct Answer: C

Section: (none)

Explanation

Explanation/Reference:

QUESTION 80

Which is a potential risk when redirecting a USB storage device during a Remote Desktop session?

- A. Access can be slower.
- B. The device can stop working.
- C. The session can stop responding.
- D. Data can be lost.

Correct Answer: D

www.VCEplus.io

Section: (none)

Explanation

Explanation/Reference:

QUESTION 81

You want to change the default printer used by the Quick Print feature in some applications. Where should you change the Windows default printer?

- A. In the printer's Properties window
- B. In the print queue
- C. Within the Print Setup page
- D. Within the Devices and Printers user interface

Correct Answer: D

Section: (none)

Explanation

Explanation/Reference:

QUESTION 82

What should you do to secure and protect the connection to a Bluetooth device?

- A. Turn off make device discoverable after connecting your devices.
- B. Reset the Bluetooth device to factory default settings after making a connection.
- C. Turn off the Bluetooth device when not in use.
- D. Use unique pairing codes when connecting your devices.

Correct Answer: D

Section: (none)

Explanation

Explanation/Reference:

QUESTION 83

You want to upgrade your Windows operating system to Windows 7. Which feature should you use to find out whether the existing devices will work after the upgrade?

- A. System Manager
- B. Windows 7 Compatibility Center
- C. Device Manager
- D. Windows Update

Correct Answer: B

Section: (none)

Explanation

Explanation/Reference:

QUESTION 84

Which Windows technology increases system performance by using flash memory?

- A. Direct Memory Access
- B. File compression

www.VCEplus.io

- C. Connect Now
- D. ReadyBoost

Correct Answer: D
Section: (none)
Explanation

Explanation/Reference:

QUESTION 85

Which Windows feature should you use to assign a drive letter to a shared folder on the network?

- A. Public Folder Sharing
- B. Computer Management Console
- C. Advanced Sharing
- D. Map Network Drive

Correct Answer: D
Section: (none)
Explanation

Explanation/Reference:

QUESTION 86

You attempt to print to a network printer, but you are unable to find the printer when you search for available printers. What is a reason that you might not be able to find the printer?

- A. Windows Firewall is blocking network discovery.
- B. The computer that the printer is connected to is turned off.
- C. The printer does not have the Plug and Play functionality.
- D. The printer is out of paper.

Correct Answer: A
Section: (none)
Explanation

Explanation/Reference:

QUESTION 87

Which program will run on a 64-bit version of the Windows operating system?

- A. A 32-bit laser printer driver
- B. A 32-bit video card driver
- C. A 32-bit version of Microsoft Office
- D. A 32-bit wireless network adapter driver

Correct Answer: C
Section: (none)
Explanation

Explanation/Reference:

QUESTION 88

Which two descriptions of Windows PowerShell are accurate? (Choose two.)

www.VCEplus.io

- A. A utility for upgrading your Windows operating system
- B. Designed to synchronize files between a computer and a network location
- C. Allows you to run scripts to perform various administrative tasks
- D. An interface that is an enhancement of the capabilities of the Windows Command window

Correct Answer: CD

Section: (none)

Explanation

Explanation/Reference:

QUESTION 89

You have an internship at a company that wants you to help deploy Windows 7 to a dozen computers. The company uses the Microsoft Deployment Toolkit instead of System Center Configuration Manager. Which three migration methods are possible? (Choose three.)

- A. LTI
- B. HTTP
- C. USB
- D. UDI
- E. ZTI

Correct Answer: BCD

Section: (none)

Explanation

Explanation/Reference:

QUESTION 90

Which two versions of Windows 7 support the Encrypting File System (EFS) functionality? (Each correct answer presents a complete solution. Choose two.)

- A. Professional Edition
- B. Ultimate Edition
- C. Home Premium Edition
- D. Starter Edition

Correct Answer: BD

Section: (none)

Explanation

Explanation/Reference:

QUESTION 91

Which Windows 7 edition is NOT available through retail and requires special Microsoft licensing?

- A. Windows 7 Ultimate
- B. Windows 7 Professional
- C. Windows 7 Premium
- D. Windows 7 Enterprise

Correct Answer: D

Section: (none)

Explanation

Explanation/Reference:

QUESTION 92

Which three of these may be included in a service pack? (Choose three.)

- A. A remote servicing of the operating system
- B. A reinstallation of the operating system
- C. All previously released important and recommended Windows Updates
- D. New functionality
- E. Fixes for security issues

Correct Answer: CDE

Section: (none)

Explanation

Explanation/Reference:

QUESTION 93

The Disk Cleanup tool:

- A. Allows free space by deleting temporary files from the hard disk drive.
- B. Rearranges the files on the hard disk to speed up performance.
- C. Moves files so that they are logically stored on the hard disk drive.
- D. Looks the surface of the disk for errors.

Correct Answer: A

Section: (none)

Explanation

Explanation/Reference:

www.VCEplus.io

QUESTION 94

Your roommate is having problems with his computer. He cannot get Windows to boot up normally. You start the computer and press F8 to see the Advanced Boot Options. You want to start the computer in a diagnostic mode that also has access to the Internet. Which boot option should you select?

- A. Safe Mode with Networking
- B. Start Windows Normally
- C. Safe Mode
- D. Safe Mode with Command Prompt

Correct Answer: A

Section: (none)

Explanation

Explanation/Reference:

QUESTION 95

You turn on your computer. You receive the following message: "System Disk Not Found." Which Windows feature should you use to restore your computer?

- A. Automated System Recovery
- B. Last Known Good Configuration
- C. Check Disk (Chkdsk)
- D. Safe Mode

Correct Answer: D

Section: (none)

Explanation

Explanation/Reference:

QUESTION 96

This question requires that you evaluate the underlined text to determine if it is correct. FAT32 is the preferred file system for Windows 10.

Select the correct answer if the underlined text does not make the statement correct. Select "No change is needed" if the underlined text makes the statement correct.

- A. NTFS
- B. FAT16
- C. EFS
- D. No change is needed

Correct Answer: A

Section: (none)

Explanation

Explanation/Reference:

QUESTION 97

Which Windows feature allows you to block access to the Task Manager?

- A. Parental Controls
- B. Group Policy
- C. User Account Control
- D. Device Manager

Correct Answer: B

Section: (none)

Explanation

Explanation/Reference:

QUESTION 98

Which task can be accomplished by a standard user, regardless of the system security settings?

- A. Installing a program
- B. Changing an account name or type
- C. Changing their own password
- D. Adding a driver for new hardware

Correct Answer: D

Section: (none)

Explanation

Explanation/Reference:

QUESTION 99

Windows presents a (User Account Control) UAC prompt when you configure:

- A. Battery power options
- B. The desktop background
- C. Automatic updates

www.VCEplus.io

D. Accessibility options

Correct Answer: C
Section: (none)
Explanation

Explanation/Reference:

QUESTION 100

After you remove malicious software from an infected computer, the user still experiences problems. When the user opens the browser, it redirects to compromised websites. You need to troubleshoot the problem. Which three areas should you investigate? (Choose three.)

- A. The system's hosts file
- B. The proxy settings
- C. The Windows Action Center
- D. The browser's security zone settings
- E. The browser's home page setting

Correct Answer: CDE
Section: (none)
Explanation

Explanation/Reference:

QUESTION 101

Which three methods can be used to unlock files on a BitLocker-protected drive? (Choose three.)

- A. Automatically unlocking by logging in as the authorized user
- B. Decompressing the files
- C. Using a Smartcard and a PIN
- D. Copying the files into another folder
- E. Unhiding the files
- F. Using a password

Correct Answer: BCF
Section: (none)
Explanation

Explanation/Reference:

QUESTION 102

What is a reason to use FAT32 as the file system for Windows 10?

- A. To have support for files larger than 4 GB
- B. To recover disk errors automatically
- C. To dual boot with an older version of Windows
- D. To set file permissions

Correct Answer: C
Section: (none)
Explanation

Explanation/Reference:

QUESTION 103

What is the largest single file that you can store on an NTFS file system?

- A. 4 TB
- B. 8 TB
- C. 16 TB
- D. 32 GB

Correct Answer: C

Section: (none)

Explanation

Explanation/Reference:

QUESTION 104

You are an intern for Tailspin Toys and are creating a slideshow that shows pictures of certain new products that your company is working on. You are accessing the network using a Windows 7 laptop, and the pictures are located on several different network shares.

You need to be able to perform a rich content search on all of the network shares at the same time.

What should you do?

- A. Enable file and printer sharing on the laptop.
- B. Copy all of the pictures to a folder on your laptop and search that folder.
- C. Add the network shares to your Pictures Library. Then perform a search on your Pictures Library.
- D. Access the network shares via the Network link in Windows 7 Explorer. Then search each share individually.

Correct Answer: C

Section: (none)

Explanation

Explanation/Reference:

www.VCEplus.io

QUESTION 105

You are preparing to install Windows 10 on a new computer. You need to enable BitLocker for encryption. What is required in order to enable BitLocker?

- A. FAT32 system drive
- B. Smart card
- C. NTFS system drive
- D. Trusted Platform Module (TPM)

Correct Answer: C

Section: (none)

Explanation

Explanation/Reference:

QUESTION 106

You attach a second Plug and Play monitor to your computer.

You need to configure the computer to use both monitors.

What should you do?

- A. Configure the USB port.
- B. Use Control Panel to modify settings in the Change display settings dialog box.
- C. Use Control Panel to modify settings in Administrative Tools.
- D. Access Device Manager and select Update Driver Software.

Correct Answer: B
Section: (none)
Explanation

Explanation/Reference:

QUESTION 107

Which three tasks can you perform by using Microsoft Management Console (MMC)? (Choose three.)

- A. Add new snap-ins to Windows administrative tools.
- B. View a remote user's desktop to troubleshoot and resolve problems.
- C. Create Taskpads to provide a custom view of available options.
- D. Create custom consoles containing assortments of administrative tools.
- E. Run cmdlets to run various system operations.
- F. Run a remote server application to perform a function.

Correct Answer: ACD
Section: (none)
Explanation

Explanation/Reference:

QUESTION 108

What are three functions of Windows 7 Upgrade Advisor? (Choose three.)

- A. Determines if your computer is capable of running Windows 7
- B. Obtains any drivers necessary to perform a Windows 7 upgrade
- C. Gives you the option to run an installation wizard
- D. Determines if there are any compatibility issues
- E. Determines which Windows 7 editions work on your computer
- F. Helps with the installation of a new Windows 7 system

Correct Answer: ADE
Section: (none)
Explanation

Explanation/Reference:

QUESTION 109

This question requires that you evaluate the underlined text to determine if it is correct.

You need to install Windows 10 on a computer using a USB drive. You need to use a ZIP to create that drive.

Select the correct answer if the underlined text does not make the statement correct. Select "No change is needed" if the underlined text makes the statement correct.

- A. An ISO
- B. APXE
- C. A ZTI
- D. No change is needed

Correct Answer: A
Section: (none)
Explanation

Explanation/Reference:

www.VCEplus.io

QUESTION 110

Which two system requirements allow Windows 7 to take advantage of 64-bit processing? (Choose two.)

- A. A minimum of 2 GB of RAM
- B. A minimum of 4 GB of RAM
- C. A minimum of 16 GB of available hard disk space
- D. A minimum of 20 GB of available hard disk space

Correct Answer: AD

Section: (none)

Explanation

Explanation/Reference:

QUESTION 111

You have a computer with Windows Vista Home Premium installed.

Which two versions of Windows 7 are you able to upgrade to? (Choose two.)

- A. Home Basic
- B. Home Premium
- C. Professional
- D. Ultimate

Correct Answer: BD

Section: (none)

Explanation

Explanation/Reference:

www.VCEplus.io

QUESTION 112

You need to return your Windows system files and settings to an earlier point in time without affecting personal files. What should you do?

- A. Restore a system image to the drive.
- B. Restart the computer, press F8, and select Last Known Good Configuration.
- C. Use the System Restore Wizard.
- D. Restart the computer in Safe Mode.

Correct Answer: C

Section: (none)

Explanation

Explanation/Reference:

QUESTION 113

Your computer starts slowly, and Windows accesses files slowly.

Which two Windows features should you use to improve performance? (Choose two.)

- A. Disk Defragmenter
- B. Disk Format
- C. System Restore
- D. Disk Cleanup

Correct Answer: AD

Section: (none)

Explanation**Explanation/Reference:****QUESTION 114**

Your roommate has a laptop with Windows 7. Updates install automatically.

Several months ago, your roommate accidentally hid several Windows updates. Now your roommate wants to install them. You need to unhide these updates in Windows Update so the computer can install them.

What should you do?

- A. Unhide the updates from the Change Settings window.
- B. Restore hidden updates from the View Update History window.
- C. Check for new updates and include hidden updates.
- D. Unhide the updates from the Restore Hidden Updates window.

Correct Answer: B

Section: (none)

Explanation**Explanation/Reference:****QUESTION 115**

Last time you turned on your computer, Windows started correctly. Now Windows starts but fails before the login prompt.

What is the first step you should try to troubleshoot this problem?

- A. Restart the computer, press F8, and select Safe Mode with Command Prompt.
- B. Restore a system image to the drive.
- C. Restart the computer, press F8, and select Start Windows Normally.
- D. Restart the computer, press F8, and select Last Known Good Configuration.

Correct Answer: D

Section: (none)

Explanation**Explanation/Reference:****QUESTION 116**

You are an intern at Lucerne Publishing.

The company needs to use multiple versions of Microsoft Office on each machine in the editing department.

Which virtualization strategy should the company use?

- A. RDP
- B. App-V
- C. Windows XP Mode
- D. VDI

Correct Answer: B

Section: (none)

Explanation**Explanation/Reference:****QUESTION 117**

This question requires that you evaluate the underlined text to determine if it is correct.

To actively scan for spyware and viruses, you should ensure Action Center is installed and running.

Select the correct answer if the underlined text does not make the statement correct. Select "No change is needed" if the underlined text makes the statement correct.

- A. Windows Defender
- B. The Malicious Software Removal Tool
- C. Microsoft Security Essentials
- D. No change is needed.

Correct Answer: C

Section: (none)

Explanation

Explanation/Reference:

QUESTION 118

Which name is a default library name in Windows 7?

- A. Music
- B. Downloads
- C. Desktop
- D. Favorites

Correct Answer: A

Section: (none)

Explanation

Explanation/Reference:

QUESTION 119

You want to share a document with everyone on your school network. Which Windows 7 feature should you use?

- A. Map Network Drive
- B. Public Folder
- C. Computer Management Console
- D. Documents Library

Correct Answer: B

Section: (none)

Explanation

Explanation/Reference:

QUESTION 120

This question requires that you evaluate the underlined text to determine if it is correct.

Public folders are located in the My Documents directory.

Select the correct answer if the underlined text does not make the statement correct. Select "No change is needed" if the underlined text makes the statement correct.

- A. Documents Library
- B. Windows Directory
- C. Downloads Directory
- D. No change is needed
- E. User Directory

Correct Answer: E

Section: (none)

Explanation

Explanation/Reference:

QUESTION 121

Which folder permission setting will allow users to view and change but not delete files?

- A. Full control
- B. Modify
- C. Read and Execute
- D. Read and Write

Correct Answer: B

Section: (none)

Explanation

Explanation/Reference:

QUESTION 122

This question requires that you evaluate the underlined text to determine if it is correct.

ReadyBoost increases system performance by using flash memory.

Instructions: Review the underlined text. If it makes the statement correct, select "No change is needed." If the statement is incorrect, select the answer choice that makes the statement correct.

- A. BitLocker
- B. The page file
- C. Disk Compression
- D. No change is needed

Correct Answer: D

Section: (none)

Explanation

Explanation/Reference:

References:<http://www.makeuseof.com/answers/does-the-windows-readyboost-option-really-work-as-ram/>

QUESTION 123

You install Windows 7. When you restart your computer, Windows 7 fails to start.

Which tool should you use to diagnose the problem?

- A. Windows Recovery Environment
- B. Windows Update
- C. Last Known Good Configuration
- D. Windows Easy Transfer

Correct Answer: A

Section: (none)

Explanation

Explanation/Reference:

QUESTION 124

Which two tools should you use to gather basic real-time performance information about the computer's system settings? (Choose two.)

- A. System Properties
- B. Task Manager
- C. System Information
- D. Resource Monitor

www.VCEplus.io

E. Computer Management

Correct Answer: BD

Section: (none)

Explanation

Explanation/Reference:

QUESTION 125

This question requires that you evaluate the underlined text to determine if it is correct.

You can export information to a text file by using the msconfig command from a command prompt.

Instructions: Review the underlined text. If it makes the statement correct, select 'No change is needed.' If the statement is incorrect, select the answer choice that makes the statement correct.

- A. taskmgr
- B. No change is needed.
- C. perfmon
- D. msinfo 32

Correct Answer: D

Section: (none)

Explanation

Explanation/Reference:

QUESTION 126

This question requires that you evaluate the underlined text to determine if it is correct. You can set Windows to automatically install all updates through Windows Update.

Select the correct answer if the underlined text does not make the statement correct. Select "No change is needed" if the underlined text makes the statement correct.

- A. Important updates only
- B. Recommended updates only
- C. Optional updates only
- D. No change is needed

Correct Answer: A

Section: (none)

Explanation

Explanation/Reference:

QUESTION 127

You want to enable or disable the programs that automatically start when Windows starts.

Which Windows feature should you use?

- A. System Configuration Utility
- B. Reliability and Performance Monitor
- C. Performance Information and Tools
- D. Computer Management Console

Correct Answer: D

Section: (none)

Explanation

Explanation/Reference:

QUESTION 128

You need to secure the contents of your entire hard disk drive even if an unauthorized user steals your computer. Which method should you use?

- A. Rights Management Services
- B. File-level share permissions
- C. Password-protection
- D. BitLocker encryption

Correct Answer: D

Section: (none)

Explanation

Explanation/Reference:

QUESTION 129

The owner of a bookstore asks you to help her set up a printer in exchange for a discount on purchases. She has three Windows 10 computers networked through a wireless router and connected through a HomeGroup. She also has a new USB printer and wants to be able to print from any of the three computers.

First, you install the printer on one of the three computers.

What should you do next to share this printer with the HomeGroup?

- A. Connect the printer directly to the network and share it with the HomeGroup.
- B. From Control Panel, select the HomeGroup feature. Make sure that the Printers checkbox is enabled.
- C. Connect to the printer over TCP/IP and then share it with the HomeGroup.
- D. Configure each computer's firewall to allow port 631 because HomeGroup's printer sharing feature uses the IPP protocol.

Correct Answer: B

Section: (none)

Explanation

Explanation/Reference:

www.VCEplus.io

QUESTION 130

You are an IT intern for Contoso, Ltd., which has five regional offices, all networked separately. Glen works in the marketing department and has a Windows 7 Professional laptop computer. He has access to numerous network printers at each regional office. He also routinely brings his computer home and prints to his home printer.

In total, he has 20 printers in his list of printers, and he is frustrated that he has to change printers for each location.

What should you do to help Glen?

- A. Instruct Glen that he must set the default printer when he visits each location for the first time.
- B. Under Devices and Printers, select a printer. Set the Manage default printers option to Change my default printer when I change networks.
- C. Upgrade Glen's laptop to Windows 7 Enterprise to enable location-aware printing.
- D. Under Devices and Printers, right-click the default printer and select the Set as default printer option.

Correct Answer: B

Section: (none)

Explanation

Explanation/Reference:

QUESTION 131

Two students in your class want to work together on a project over the summer break- Courtney is staying on campus, and Ty is taking an internship in Japan.

They want to know how to share files in order to work remotely.

You suggest Microsoft OneDrive.

Which three features of OneDrive can help Ty and Courtney? (Choose three.)

- A. OneDrive automatically keeps track of the previous 25 versions of all documents.
- B. OneDrive provides the ability to view and control someone's computer desktop to allow for easier collaboration.

- C. When the OneDrive desktop application is installed on a Windows 7 computer, Microsoft Office applications can save directly to OneDrive folders.
- D. OneDrive provides automatic BitLocker encryption of the files stored in the local OneDrive folder and the OneDrive.com folders.
- E. OneDrive allows access to files from any networked device by using OneDrive.com or a OneDrive application on their mobile device.

Correct Answer: ACE

Section: (none)

Explanation

Explanation/Reference:

QUESTION 132

In which location of Control Panel will you find the shortcut to manage the services on your Windows 7 computer?

- A. The Hardware and Sound group under Devices and Printers
- B. The Programs group under Programs and Features
- C. The System and Security group under Administrative Tools
- D. The Network and Internet group under Network and Sharing Center

Correct Answer: C

Section: (none)

Explanation

Explanation/Reference:

QUESTION 133

You need to find out if your Windows XP computer is capable of running Windows 7. Which tool should you use?

- A. Windows Easy Transfer
- B. Windows Upgrade Advisor
- C. Application Compatibility Toolkit
- D. Windows 7 Compatibility Checker

Correct Answer: B

Section: (none)

Explanation

Explanation/Reference:

QUESTION 134

You need to be able to view multiple time zones on your desktop. What should you do?

- A. Add multiple clock gadgets.
- B. Modify the System and Security settings.
- C. Configure dual-display.
- D. Modify the Date and Time properties of the computer.

Correct Answer: B

Section: (none)

Explanation

Explanation/Reference:

QUESTION 135

Microsoft Management Console has snap-ins that are used to manage:

- A. Contacts, calendars, and other data in the cloud.
- B. Hardware, software, and network components on a computer.
- C. Restore points for recovery.
- D. IP addresses on a peer-to-peer network.

Correct Answer: B

Section: (none)

Explanation

Explanation/Reference:

QUESTION 136

You add a network folder to a library on your computer. When you look through the list of files, you decide that you do not want to include some of the files in the library. You right-click each file that you want to remove and select Delete. What is the outcome of these actions?

- A. Only the library's copy of the file is deleted.
- B. The files are only removed from the library's index.
- C. The files are deleted from the original network location.
- D. Nothing happens because the Delete function is disabled when working within a library.

Correct Answer: C

Section: (none)

Explanation

Explanation/Reference:

QUESTION 137

Which is the preferred file system for Windows 10 computers?

- A. NTFS file system
- B. FAT file system
- C. FAT32 file system
- D. CDFS

Correct Answer: A

Section: (none)

Explanation

Explanation/Reference:

QUESTION 138

You need to find out whether a computer is running a 32-bit or 64-bit version of the Windows operating system. What should you do?

- A. From the Start menu, type 64-bit in the Search programs and files field.
- B. From Control Panel, select System.
- C. Open Device Manager and select Processors.
- D. From the Windows Help and Support feature, type 64-bit system in the Search field.

Correct Answer: B

Section: (none)

Explanation

Explanation/Reference:

www.VCEplus.io

QUESTION 139

You want to configure Windows to periodically and automatically check for the most recent driver for your video card Which Windows feature should you use?

- A. Windows Update
- B. Device Manager
- C. Windows Installer
- D. Programs and Features

Correct Answer: A

Section: (none)

Explanation

Explanation/Reference:

QUESTION 140

Your roommate, Tanya, has a Windows 7 computer. Tanya leaves her computer running while she is on a month-long vacation. When Tanya returns, she discovers that updates have not been automatically updated on her computer. What are two ways to ensure that the latest scheduled updates install on Tanya's computer? (Choose two.)

- A. Run Windows Update files from the hard drive.
- B. Restore hidden updates in Windows.
- C. Run Windows Update manually.
- D. Turn on automatic updates in Windows.

Correct Answer: CD

Section: (none)

Explanation

Explanation/Reference:

www.VCEplus.io

QUESTION 141

This question requires that you evaluate the underlined text to determine if it is correct.

By default, Windows 10 allows users with any user account to install manual updates.

Select the correct answer if the underlined text does not make the statement correct. Select "No change is needed" if the underlined text makes the statement correct.

- A. administrator user accounts
- B. standard user accounts
- C. guest user accounts
- D. No change is needed.

Correct Answer: A

Section: (none)

Explanation

Explanation/Reference:

QUESTION 142

Which folder permission allows users to view, change, and delete files?

- A. Full Control
- B. Read and Execute
- C. Modify
- D. Read and Write

Correct Answer: A

Section: (none)

Explanation

Explanation/Reference:

QUESTION 143

How can you create a connection to a network share without having to type its network address each time you need to connect?

- A. Add the computer to the shared workgroup.
- B. Add a Network Location.
- C. Map a network drive.
- D. Create a HomeGroup.

Correct Answer: C

Section: (none)

Explanation

Explanation/Reference:

QUESTION 144

This question requires that you evaluate the underlined text to determine if it is correct.

To change a file system from FAT32 to NTFS, you should run the fdisk command at the command prompt.

Select the correct answer if the underlined text does not make the statement correct. Select "No change is needed" if the underlined text makes the statement correct.

- A. convert
- B. diskpart
- C. change
- D. No change is needed.

Correct Answer: A

Section: (none)

Explanation

Explanation/Reference:

QUESTION 145

You have a Windows 7 Enterprise workstation that is used by multiple users. You need to allow each of them to encrypt their own files on this workstation. Which tool should you use?

- A. EFS
- B. BitLocker
- C. ZIP
- D. Convert

Correct Answer: A

Section: (none)

Explanation

Explanation/Reference:

QUESTION 146

What are two characteristics of Windows Mobility Center? (Choose two.)

- A. Allows you to adjust the brightness of your display
- B. Allows your computer to connect to a remote server

www.VCEplus.io

- C. Allows you to configure power options
- D. Provides you with a virtual desktop interface
- E. Allows you to access another computer on a network

Correct Answer: AC

Section: (none)

Explanation

Explanation/Reference:

QUESTION 147

You want to use your home computer to access your work computer.

Which two actions should you perform before connecting the computers? (Each correct answer presents part of the solution. Choose two.)

- A. Obtain the IP address of the work computer.
- B. Obtain the IP address of the home computer.
- C. Obtain the MAC address of the home computer.
- D. Allow Remote Desktop on the home computer.
- E. Allow Remote Desktop on the work computer.
- F. Obtain the MAC address of the work computer.

Correct Answer: DE

Section: (none)

Explanation

Explanation/Reference:

QUESTION 148

Which two versions of Windows 7 support the Windows Anytime Upgrade functionality? (Choose two.)

- A. Professional
- B. Ultimate
- C. Enterprise
- D. Starter

Correct Answer: AD

Section: (none)

Explanation

Explanation/Reference:

QUESTION 149

You are an IT intern for Contoso, Ltd. You are responsible for deploying Windows 7 to a staff of more than 100 users.

The IT department plans to execute the upgrades by using the network. You start the deployment on each computer. You guide the installs through the initial steps.

Which deployment method are you using?

- A. MSI
- B. LTI
- C. WMI
- D. ZTI

Correct Answer: B

Section: (none)

Explanation

Explanation/Reference:

QUESTION 150

You need to find out the speed of the processor that your Windows 7 computer is running. What should you do?

- A. From Hardware and Sound, select Devices and Printers
- B. From System and Security, select System.
- C. From Administrative Tools, select Event Viewer.
- D. From Administrative Tools, select Services.

Correct Answer: B

Section: (none)

Explanation

Explanation/Reference:

QUESTION 151

Where should you configure settings to allow Workgroup users to use a printer connected to your computer?

- A. In the System Configuration Utility
- B. In the Computer Management console
- C. In the Network and Sharing Center
- D. In the Local Security Policy editor

Correct Answer: C

Section: (none)

Explanation

Explanation/Reference:

www.VCEplus.io

QUESTION 152

What is the primary function of Windows Defender?

- A. Protects your computer by installing a firewall.
- B. Protects your computer against unauthorized access.
- C. Protects your computer against viruses and other malicious software.
- D. Ensures that all files on your computer are encrypted.

Correct Answer: C

Section: (none)

Explanation

Explanation/Reference:

Windows Defender is an anti-malware component of Microsoft Windows. References: https://en.wikipedia.org/wiki/Windows_Defender

QUESTION 153

This question requires that you evaluate the underlined text to determine if it is correct.

You need to install Windows 7 on a computer using a USB drive. You need to use a ZIP to create that drive.

Select the correct answer if the underlined text does not make the statement correct. Select "No change is needed" if the underlined text makes the statement correct.

- A. an iso
- B. apx
- C. azn
- D. No change is needed.

Correct Answer: A
Section: (none)
Explanation

Explanation/Reference:

QUESTION 154

You turn on your computer. You receive the following message: "System Disk Not Found." Which Windows feature should you use to restore your computer?

- A. Check Disk (Chkdsk)
- B. Last Known Good Configuration
- C. safe Mode
- D. Automated System Recovery

Correct Answer: C
Section: (none)
Explanation

Explanation/Reference:

QUESTION 155

Last time you turned on your computer, Windows started correctly. Now Windows starts but fails before the login prompt. What is the first step you should try to troubleshoot this problem?

- A. Restore a system image to the drive.
- B. Restart the computer, press F8, and select Last Known Good Configuration.
- C. Restart the computer, press F8, and select Safe Mode with Command Prompt.
- D. Restart the computer, press F8, and select Start Windows Normally.

Correct Answer: D
Section: (none)
Explanation

Explanation/Reference:

QUESTION 156

This question requires that you evaluate the underlined text to determine if it is correct.

Running Windows Update will automatically download and install device drivers for Bluetooth devices.

Instructions: Review the underlined text. If it makes the statement correct, select "No change is needed" If the statement is incorrect, select the answer choice that makes the statement correct.

- A. Device Manager
- B. Hardware Wizard
- C. No change is needed.
- D. Bluetooth Support Service

Correct Answer: C
Section: (none)
Explanation

Explanation/Reference:

References:<https://support.microsoft.com/en-za/help/4028443/windows-update-drivers-in-windows-10>

QUESTION 157

You are an intern at a small company. You are learning how to run some of the system management tools from a command line. You want to access Device Manager from a command prompt. Which command should you enter?

- A. devmgmt.cpl

www.VCEplus.io

- B. devmgmt.dll
- C. devmgmt.exe
- D. devmgmt.msc

Correct Answer: D
Section: (none)
Explanation

Explanation/Reference:

References:[https://technet.microsoft.com/en-us/library/cc754081\(v=ws.11\).aspx](https://technet.microsoft.com/en-us/library/cc754081(v=ws.11).aspx)

QUESTION 158

You need to print a paper to give to your professor. A classmate says you can print to a USB printer, which is connected to another computer. You try to add to your printer list and get prompted for a password that you do not know. Why does adding the printer to your computer require a password?

- A. Your User ID is not part of the local Administrators group.
- B. Your computer is not part of a domain.
- C. Your computer is not on the same network as the printer.
- D. Password Protected Sharing is enabled.

Correct Answer: D
Section: (none)
Explanation

Explanation/Reference:

References:<https://www.recoverlostpassword.com/windows-10/how-to-turn-off-password-protected-sharing-in-windows-10.html>

QUESTION 159

Your aunt uses her new Windows 10 laptop to read articles. However, she finds that reading for long periods strains her eyes. You want to adjust the text on the screen to make it easier for your aunt to read for long periods without experiencing eye strain. Which option should you select?

- A. Custom Scaling
- B. Screen Resolution
- C. Clear Type
- D. Change Text Size of Menus

Correct Answer: B
Section: (none)
Explanation

Explanation/Reference:

QUESTION 160

A Windows 10 library:

- A. Organizes user files from disparate locations.
- B. Encrypts files by using the Encrypting File System (EFS).
- C. Makes copies of user files in a central location.
- D. Restores files from system backup.

Correct Answer: A
Section: (none)
Explanation

Explanation/Reference:

References:<https://docs.microsoft.com/en-us/windows/client-management/windows-libraries>

QUESTION 161

Which Windows feature allows you to confirm that a program should run with elevated permissions?

- A. Parental Controls
- B. Group Policy
- C. Device Manager
- D. User Account Control

Correct Answer: D

Section: (none)

Explanation

Explanation/Reference:

References:<http://www.dummies.com/computers/operating-systems/windows-7/how-to-run-a-program-with-elevated-permissions/>

QUESTION 162

In which section of Control Panel will you find the shortcut to manage the services on your Windows 10 computer?

- A. The Programs group under Programs and Features
- B. The Computer Management group under Administrative Tools
- C. The Hardware and Sound group under Devices and Printers
- D. The Network and Internet group under Networks and Sharing Center

Correct Answer: B

Section: (none)

Explanation

Explanation/Reference:

www.VCEplus.io

QUESTION 163

This question requires that you evaluate the underlined text to determine if it is correct.

To actively scan for spyware and viruses on a Windows 10 device, you should ensure Action Center is installed and running.

Instructions: Review the underlined text. If it makes the statement correct, select "No change is needed" If the statement is incorrect, select the answer choice that makes the statement correct.

- A. The Malicious Software Removal Tool
- B. Windows Defender
- C. No change is needed.
- D. Microsoft Security Essentials

Correct Answer: B

Section: (none)

Explanation

Explanation/Reference:

<https://support.microsoft.com/en-us/help/14210/security-essentials-download>

QUESTION 164

You are an intern at a large company that has various versions of Windows installed on desktops throughout the company. The Chief Information Officer (CIO) asks you to upgrade as many desktops as possible to Windows 10 Enterprise. Which two versions of Windows can be upgraded to Windows 10 Enterprise? (Choose two.)

- A. Windows 7 Ultimate
- B. Windows 8.1 Professional Windows Media Center edition
- C. Windows 8.1 Connected
- D. Windows 8 Core
- E. Windows 8.1 RT

Correct Answer: AB
Section: (none)
Explanation

Explanation/Reference:
References:<https://docs.microsoft.com/en-us/windows/deployment/upgrade/windows-10-upgrade-paths>

QUESTION 165

Your roommate has a Windows 8.1 32-bit laptop and wants to upgrade it to Windows 10 64-bit. What should you tell her about such upgrade?

- A. You need to upgrade the existing operating system, preserving the files, applications, and settings.
- B. You need to perform a new installation. Files, applications, and settings will be deleted.
- C. You cannot upgrade Windows 8.1 32-bit to Windows 10 64-bit.
- D. You need to upgrade to Windows 8.1 64-bit and then upgrade to Windows 10 64-bit.

Correct Answer: B
Section: (none)
Explanation

Explanation/Reference:
References:<http://www.intowindows.com/upgrade-to-windows-10-64-bit-from-windows-78-l-32/>

QUESTION 166

Your friend asks for your help with upgrading his computer to Windows 10. You plan to perform a clean install of Windows 10 on his computer, which has Windows 8.1 installed. What should you tell your friend he will be able to find on the computer's hard drive after the installation is complete?

- A. previous Windows8.1 installation
- B. backup copy of all personal files
- C. user profiles migrated to Windows 10
- D. Windows 10 installation files

Correct Answer: D
Section: (none)
Explanation

Explanation/Reference:
References: <https://www.cnet.com/how-to/clean-install-windows-10/>

QUESTION 167

This question requires that you evaluate the underlined text to determine if it is correct. You can set Windows to automatically install updates for other Microsoft products through Windows Update.
Instructions: Review the underlined text. If it makes the statement correct, select "No change is needed" If the statement is incorrect, select the answer choice that makes the statement correct.

- A. No change is needed.
- B. Critical updates only
- C. Third-party updates
- D. Optional updates only

Correct Answer: A
Section: (none)
Explanation

Explanation/Reference:

QUESTION 168

You are setting up accounts on your computer so your roommates can log on to your computer and browse the web. You decide to use the graphical Local Users and Groups tool to configure the user account on your computer. What does the Action display when you select a user name?

www.VCEplus.io

- A. A history of all actions you have performed on that user
- B. All pending actions the computer will execute
- C. Buttons to record the action you take on that user
- D. Available actions based on that user

Correct Answer: D

Section: (none)

Explanation

Explanation/Reference:

QUESTION 169

DRAG DROP

You need to enable connection to a Bluetooth device.

What should you do? (To answer, move the four appropriate actions from the list of actions to the answer area and arrange them in the correct order.)

Select and Place:



Find and pair the device.

Add a Bluetooth adapter to your computer.

Set up a new partnership in Sync Center.

Use the Add Bluetooth Device feature in Control Panel.

Turn on the Bluetooth device and make it discoverable.

Enable **Network Discovery** in Network and Sharing Center.

Correct Answer:



Section: (none)
Explanation

Explanation/Reference:

Note:

Step 1: Add a Bluetooth adapter to your computer if it doesn't already have one. You can do this by plugging the adapter into a USB port.

Step 2: Set up the Bluetooth enabled device so that your computer can find it.

To do this, you must first:

Turn the device on.

Make it discoverable.

Step 3 – step 4: To add a Bluetooth enabled device

Once you've verified that a Bluetooth adapter is installed on your computer, and the device you want to connect with is discoverable, you can add most Bluetooth enabled devices to your computer. Here's how:

Open Devices and Printers by clicking the Start button Picture of the Start button, and then, on the Start menu, clicking Devices and Printers.

Click Add a device, and then follow the instructions.

Click the Bluetooth enabled device you want to add to your computer, and then click Next. If you don't see the device you want to add, make sure the device is turned on and discoverable. If you just turned on the device, it may take Windows several seconds to detect it.

Windows might ask you to enter a pairing code (sometimes called a PIN or passcode). Most Bluetooth enabled devices need to be paired with your computer before they can exchange information with each other. To do this, they must exchange protected pairing codes. This means that only the wireless devices you authorize can connect with your computer.

QUESTION 170

DRAG DROP

You need to install a new webcam on your personal computer.

What should you do? (To answer, move the four appropriate actions from the list of actions to the answer area and arrange them in the correct order.)

Select and Place:

Configure the COM ports.	
Configure the Display properties.	
Plug the webcam into a USB port.	
Run the setup program provided by the manufacturer.	
Use Windows Update to configure the updated driver.	
Allow Windows to locate and add the new hardware.	

Correct Answer:

Configure the COM ports.	Plug the webcam into a USB port.
Configure the Display properties.	Allow Windows to locate and add the new hardware.
	Use Windows Update to configure the updated driver.
	Run the setup program provided by the manufacturer.

Section: (none)
Explanation

Explanation/Reference:
Note:

- * When you connect an external webcam to your computer for the first time, Windows will recognize it and automatically install a driver for it.
- * After installation is complete, check the information that came with your webcam to see if you need to install any additional software.

QUESTION 171
DRAG DROP

Match the Windows feature to its corresponding usage.

To answer, drag the appropriate Windows feature from the column on the left to its corresponding usage on the right. Each Windows feature may be used once, more than once, or not at all. Each correct match is worth one point.

Select and Place:

Windows features	Answer Area
Windows Media Player	enables screen capture and editing of the captured image
Windows Media Center	troubleshoots, enables, and disables startup services
IPCONFIG	requires use of the command prompt
Snipping Tool	enables media playback, DVR functionality, HDTV capability, and watching live TV
MSCONFIG	

Correct Answer:

Windows features	Answer Area
Windows Media Player	enables screen capture and editing of the captured image
	troubleshoots, enables, and disables startup services
	requires use of the command prompt
	enables media playback, DVR functionality, HDTV capability, and watching live TV

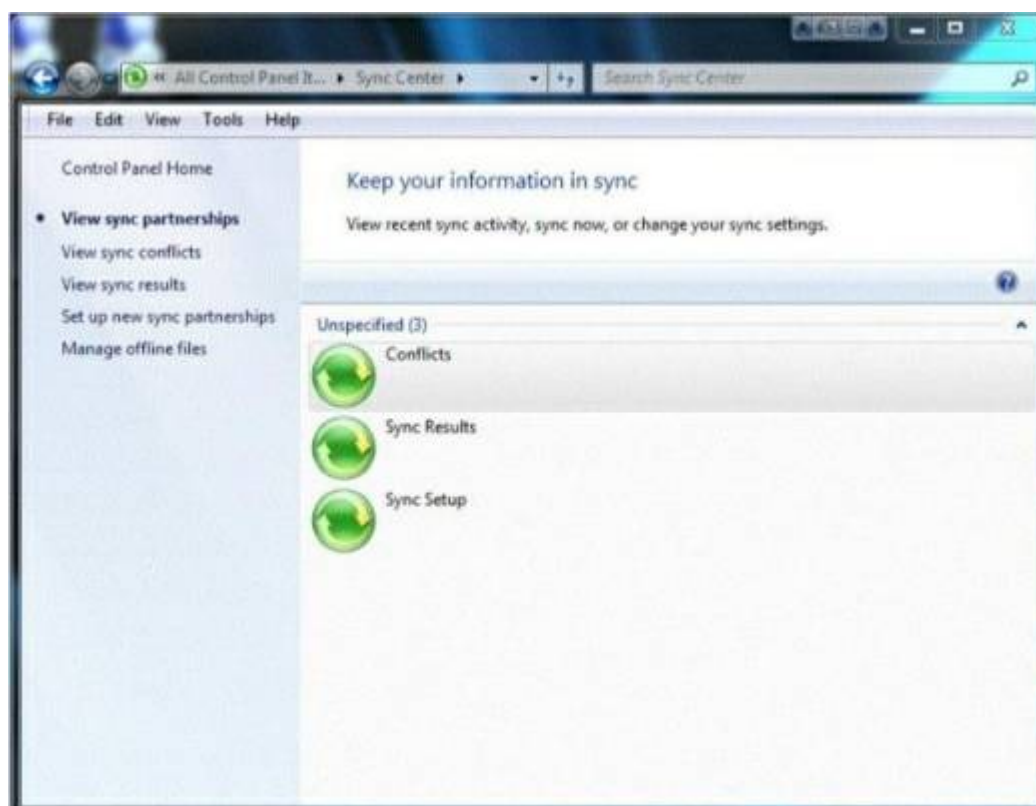
Section: (none)
Explanation

Explanation/Reference:

QUESTION 172

HOTSPOT

You are a teaching assistant for a Basic Networking class. Periodically, you update class assignments in a Microsoft Excel spreadsheet stored on a network drive. You need to allow students who have laptops to always have a current copy of the assignments spreadsheet. You access Control Panel as shown in the following image:



Use the drop-down menus to select the answer choice that completes each statement. Each correct selection is worth one point.

Hot Area:

First, you should [answer choice]

set up new sync partnerships.
view sync conflicts.
enable offline files.

Next, you should [answer choice]

view sync results.
set up new sync partnerships.
view sync conflicts.

Correct Answer:

First, you should [answer choice]

set up new sync partnerships.
view sync conflicts.
enable offline files.

Next, you should [answer choice]

view sync results.
set up new sync partnerships.
view sync conflicts.

Section: (none)
Explanation

Explanation/Reference:

QUESTION 173

HOTSPOT

For each of the following statements, select Yes if the statement is true. Otherwise, select No. Each correct selection is worth one point.

Hot Area:

Answer Area
VCE To PDF - Free Practice Exam

	Yes	No
You can perform an in-place upgrade to Windows 7 from both Windows XP and Windows Vista.	<input type="radio"/>	<input type="radio"/>
It is possible to upgrade to a 32-bit version of Windows 7 only from a 32-bit previous version of Windows.	<input type="radio"/>	<input type="radio"/>
All upgrades to Windows 7 must be performed as clean installs.	<input type="radio"/>	<input type="radio"/>

Correct Answer:

Answer Area
VCE To PDF - Free Practice Exam

	Yes	No
You can perform an in-place upgrade to Windows 7 from both Windows XP and Windows Vista.	<input type="radio"/>	<input checked="" type="radio"/>
It is possible to upgrade to a 32-bit version of Windows 7 only from a 32-bit previous version of Windows.	<input checked="" type="radio"/>	<input type="radio"/>
All upgrades to Windows 7 must be performed as clean installs.	<input type="radio"/>	<input checked="" type="radio"/>

Section: (none)

Explanation

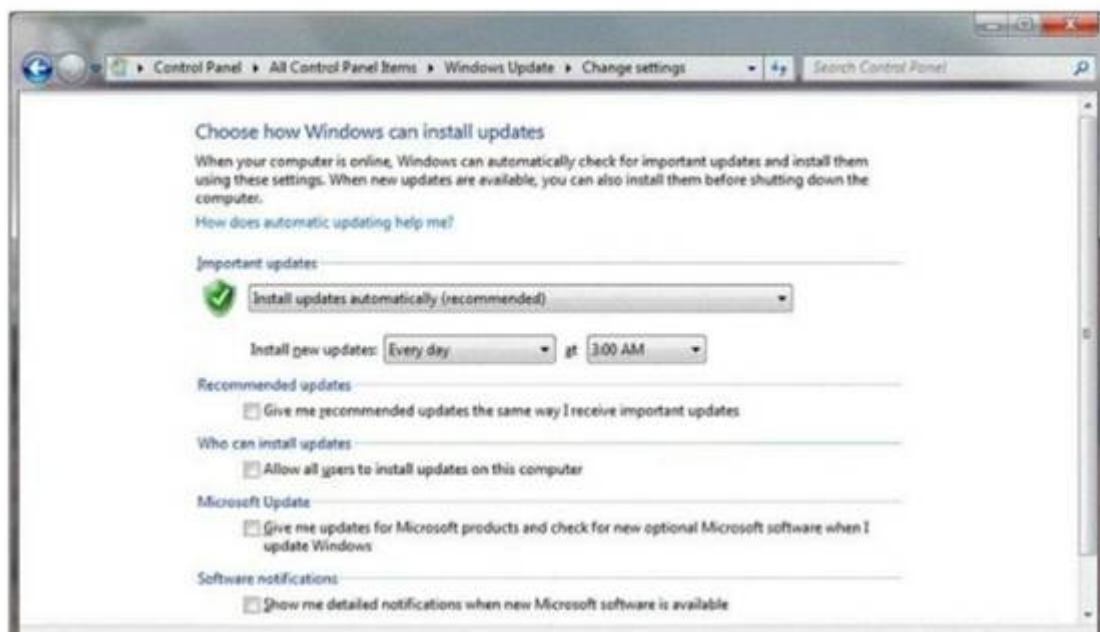
Explanation/Reference:

QUESTION 174

HOTSPOT

You have an administrator account on your computer. You set up standard user accounts for each of your roommates.

You want to ensure that your computer automatically receives the latest updates, even when your roommates are using the computer. You review the information in the following image:



Use the drop-down menus to select the answer choice that completes each statement. Each correct selection is worth one point.

Hot Area:

Answer Area

To allow updates to install when your roommates are using the computer, select the **[Answer choice]**

To allow one of your roommates to install Driver Updates, select the **[Answer choice]**

Exam

Allow all users to install updates on this computer box.

Give me recommended updates the same way I receive important updates box.

Give me updates for Microsoft products and check for new optional Microsoft Software when I update Windows box.

Give me recommended updates the same way I receive important updates box.

Allow all users to install updates on this computer box.

Give me updates for Microsoft products and check for new optional Microsoft Software when I update Windows box.

Correct Answer:

Answer Area

To allow updates to install when your roommates are using the computer, select the **[Answer choice]**

To allow one of your roommates to install Driver Updates, select the **[Answer choice]**

Exam

Allow all users to install updates on this computer box.

Give me recommended updates the same way I receive important updates box.

Give me updates for Microsoft products and check for new optional Microsoft Software when I update Windows box.

Give me recommended updates the same way I receive important updates box.

Allow all users to install updates on this computer box.

Give me updates for Microsoft products and check for new optional Microsoft Software when I update Windows box.

Section: (none)
Explanation

Explanation/Reference:

QUESTION 175

HOTSPOT

For each of the following statements, select Yes if the statement is true. Otherwise, select No. Each correct selection is worth one point.

Hot Area:

Answer Area
VCE To PDF - Free Practice Exam

	Yes	No
Only an administrator can install a plug and play device.	<input type="radio"/>	<input type="radio"/>
If a plug and play device driver is placed in the driver store, non-administrative accounts can install the device.	<input type="radio"/>	<input type="radio"/>
A network printer installs automatically on Windows.	<input type="radio"/>	<input type="radio"/>

VCEplus
VCE To PDF - Free Practice Exam

Correct Answer:

Answer Area
VCE To PDF - Free Practice Exam

	Yes	No
Only an administrator can install a plug and play device.	<input type="radio"/>	<input checked="" type="radio"/>
If a plug and play device driver is placed in the driver store, non-administrative accounts can install the device.	<input checked="" type="radio"/>	<input type="radio"/>
A network printer installs automatically on Windows.	<input type="radio"/>	<input checked="" type="radio"/>

VCEplus
VCE To PDF - Free Practice Exam

Section: (none)
Explanation

Explanation/Reference:

QUESTION 176

DRAG DROP

Match the Device Manager icon description to its meaning.

To answer, drag the appropriate icon description from the column on the left to its meaning on the right. Each icon description may be used once, more than once, or not at all. Each correct match is worth one point.

Select and Place:

Icons	Answer Area
black exclamation point on a yellow background	The device was manually disabled.
red X	A critical error has occurred and the device has been disabled by the operating system.
white circle with a black down arrow	The device is NOT functioning properly.

Correct Answer:

Icons	Answer Area
	The device was manually disabled.
	A critical error has occurred and the device has been disabled by the operating system.
	The device is NOT functioning properly.

Section: (none)
Explanation

Explanation/Reference:

QUESTION 177
HOTSPOT

For each of the following statements, select Yes if the statement is true. Otherwise, select No. Each correct selection is worth one point.

Hot Area:

Answer Area
VCE To PDF - Free Practice Exam

	Yes	No
In Windows 7 Home Premium Edition it is only possible to have one default printer.	<input type="radio"/>	<input type="radio"/>
It is possible to configure a network printer as a local printer without directly attaching the printer to the computer.	<input type="radio"/>	<input type="radio"/>
Printing to an XPS file allows the end user to modify the document from any computer by using an XPS application.	<input type="radio"/>	<input type="radio"/>

Correct Answer:

Answer Area
VCE To PDF - Free Practice Exam

	Yes	No
In Windows 7 Home Premium Edition it is only possible to have one default printer.	<input checked="" type="radio"/>	<input type="radio"/>
It is possible to configure a network printer as a local printer without directly attaching the printer to the computer.	<input checked="" type="radio"/>	<input type="radio"/>
Printing to an XPS file allows the end user to modify the document from any computer by using an XPS application.	<input type="radio"/>	<input checked="" type="radio"/>

Section: (none)

Explanation

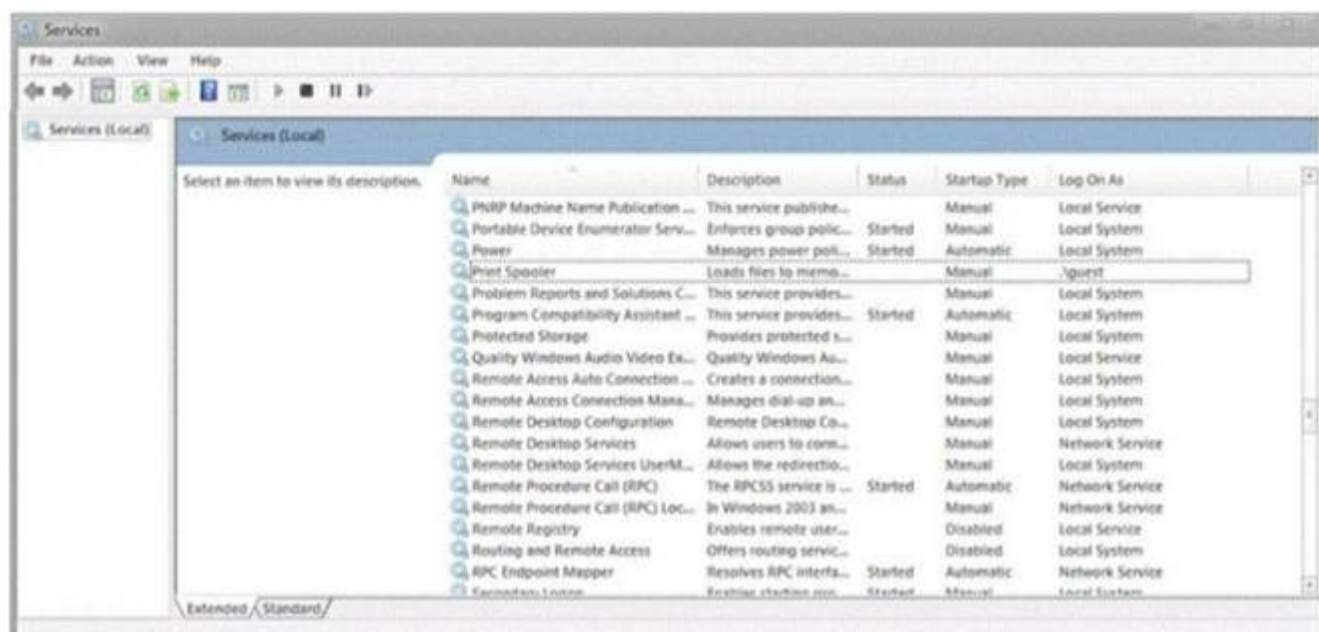
Explanation/Reference:

QUESTION 178

HOTSPOT

During your summer job at Lucerne Publishing, an employee's computer is infected by a virus, which is then removed. However, this virus made changes to a service on the computer, and now the employee is unable to print or even see networked printers.

The employee's services are shown in the following image:



Use the drop-down menus to select the answer choice that completes each statement. Each correct selection is worth one point.

Hot Area:

Answer Area
VCE To PDF - Free Practice Exam

Set the Print Spooler service to a startup type of [answer choice]

Set the Print Spooler service to the [answer choice] level of privileges.

Correct Answer:

Answer Area
VCE To PDF - Free Practice Exam

Set the Print Spooler service to a startup type of [answer choice]

Set the Print Spooler service to the [answer choice] level of privileges.

Section: (none)
Explanation

Explanation/Reference:

QUESTION 179

HOTSPOT

The School of Fine Art has a lounge with five computers for visitors to use.

You need to configure the computers to improve accessibility.

You open Control Panel and see what is shown in the following image:



Use the drop-down menus to select the answer choice that completes each statement. Each correct selection is worth one point.

Hot Area:

Answer Area

Configure [answer choice] to adjust the default volume for the hearing impaired.

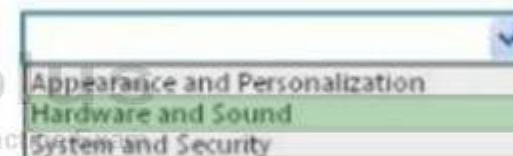
Configure [answer choice] to enhance the display to be optimized for the vision impaired.

The image shows two drop-down menus. The first menu, corresponding to the first statement, has the following options: Appearance and Personalization, Hardware and Sound, and System and Security. The second menu, corresponding to the second statement, has the following options: Ease of Access, Programs, and System and Security.

Correct Answer:

Answer Area
VCE To PDF - Free Practice Exam

Configure [answer choice] to adjust the default volume for the hearing impaired.



Configure [answer choice] to enhance the display to be optimized for the vision impaired.



Section: (none)
Explanation

Explanation/Reference:

QUESTION 180

HOTSPOT

For each of the following statements, select Yes if the statement is true. Otherwise, select No. Each correct selection is worth one point.

Hot Area:

Answer Area
VCE To PDF - Free Practice Exam

	Yes	No
Installing Windows XP Mode requires a separate license for Windows XP.	<input type="radio"/>	<input type="radio"/>
Programs from an XP Mode installation display in both the Windows 7 list of programs and the XP Mode list of programs.	<input type="radio"/>	<input type="radio"/>
Windows XP Mode is available for Windows 7 Home.	<input type="radio"/>	<input type="radio"/>

Correct Answer:

Installing Windows XP Mode requires a separate license for Windows XP.

Yes No

Yes No

Programs from an XP Mode installation display in both the Windows 7 list of programs and the XP Mode list of programs.

Yes No

Windows XP Mode is available for Windows 7 Home.

Yes No
VCEplus
 VCE To PDF - Free Practice Exam

Section: (none)

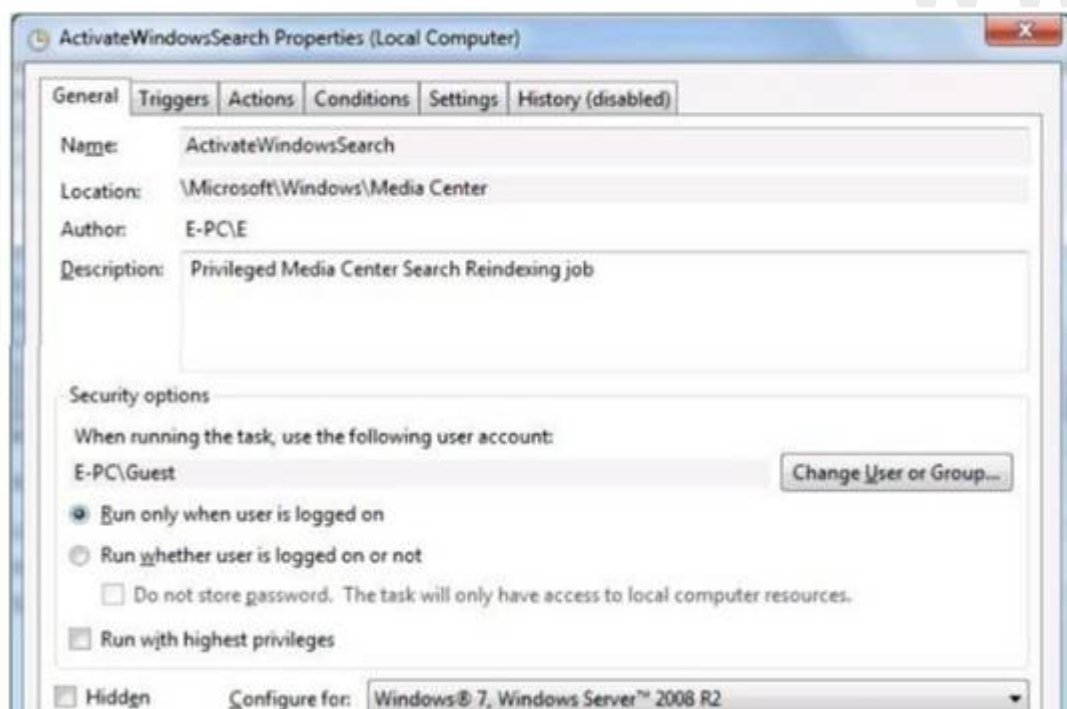
Explanation

Explanation/Reference:

QUESTION 181

HOTSPOT

Your roommate complains that her computer is showing an error message that says ActivateWindowsSearch scheduled task failed to run. To troubleshoot the error you go to Task Scheduler and view the properties of the ActivateWindowsSearch task, as shown in the following image:



Use the drop-down menus to select the answer choice that completes each statement. Each correct selection is worth one point.

Hot Area:

Answer Area

VCE To PDF - Free Practice Exam

To resolve the issue, the first task to complete is [answer choice]

set the task to run as SYSTEM.
set the task to run as LOCAL SERVICE.
set the task to run as NETWORK SERVICE.

To resolve the issue, the second task to complete is [answer choice]

set the task to run whether the user is logged on or not.
set the task to run with highest privileges.
set the task to "Configure" for Windows Vista.

Correct Answer:

Answer Area

VCE To PDF - Free Practice Exam

To resolve the issue, the first task to complete is [answer choice]

set the task to run as SYSTEM.
set the task to run as LOCAL SERVICE.
set the task to run as NETWORK SERVICE.

To resolve the issue, the second task to complete is [answer choice]

set the task to run whether the user is logged on or not.
set the task to run with highest privileges.
set the task to "Configure" for Windows Vista.

Section: (none)

Explanation

Explanation/Reference:

QUESTION 182

HOTSPOT

For each of the following statements, select Yes if the statement is true. Otherwise, select No. Each correct selection is worth one point.

Hot Area:

Answer Area
VCEplus
VCE To PDF - Free Practice Exam

- | | Yes | No |
|--|-----------------------|-----------------------|
| Users logged in to Windows 7 as administrators are given a standard user token in addition to their administrator token. | <input type="radio"/> | <input type="radio"/> |
| A standard user account is able to make changes to services or drivers that affect other users of the computer. | <input type="radio"/> | <input type="radio"/> |
| To make changes to how UAC operates, you must be logged in as an administrator. | <input type="radio"/> | <input type="radio"/> |

Correct Answer:

Answer Area
VCEplus
VCE To PDF - Free Practice Exam

www.VCEplus.io

	Yes	No
Users logged in to Windows 7 as administrators are given a standard user token in addition to their administrator token.	<input checked="" type="radio"/>	<input type="radio"/>
A standard user account is able to make changes to services or drivers that affect other users of the computer.	<input type="radio"/>	<input checked="" type="radio"/>
To make changes to how UAC operates, you must be logged in as an administrator.	<input checked="" type="radio"/>	<input type="radio"/>

Section: (none)
Explanation

Explanation/Reference:

QUESTION 183
HOTSPOT

For each of the following statements, select Yes if the statement is true. Otherwise, select No. Each correct selection is worth one point.

Hot Area:

Answer Area
VCE To PDF - Free Practice Exam

NTFS and FAT32 both support a file size of over 4 GB.

Yes

No

NTFS and FAT32 can both use permissions and encryption.

NTFS and FAT32 can both be used as the format for Windows 7.

Correct Answer:

Answer Area
VCE To PDF - Free Practice Exam

NTFS and FAT32 both support a file size of over 4 GB.

Yes

No

NTFS and FAT32 can both use permissions and encryption.

NTFS and FAT32 can both be used as the format for Windows 7.

Section: (none)

Explanation

Explanation/Reference:

QUESTION 184

HOTSPOT

For each of the following statements, select Yes if the statement is true. Otherwise, select No. Each correct selection is worth one point.

Hot Area:

Answer Area
VCEplus
VCE To PDF - Free Practice Exam

Restore deleted data files by using the System Restore Wizard.

Yes

No

Restore registry settings by using the System Restore Wizard.

Restore data files from a system image backup.

Answer Area
VCEplus
VCE To PDF - Free Practice Exam

Correct Answer:

Answer Area
VCEplus
VCE To PDF - Free Practice Exam

Restore deleted data files by using the System Restore Wizard.

Yes

No

Restore registry settings by using the System Restore Wizard.

Restore data files from a system image backup.

Answer Area
VCEplus
VCE To PDF - Free Practice Exam

Section: (none)

Explanation

Explanation/Reference:

QUESTION 185

HOTSPOT

For each of the following statements, select Yes if the statement is true. Otherwise, select No. Each correct selection is worth one point.

Hot Area:

VCE To PDF - Free Practice Exam

	Yes	No
An application that is installed by using Group Policy may be uninstalled by using Group Policy.	<input type="radio"/>	<input type="radio"/>
An application that is installed by using Group Policy may be uninstalled by using a script.	<input type="radio"/>	<input type="radio"/>
An application that is installed by using Group Policy may be uninstalled manually.	<input type="radio"/>	<input type="radio"/>

Correct Answer:

VCE To PDF - Free Practice Exam

	Yes	No
An application that is installed by using Group Policy may be uninstalled by using Group Policy.	<input checked="" type="radio"/>	<input type="radio"/>
An application that is installed by using Group Policy may be uninstalled by using a script.	<input checked="" type="radio"/>	<input type="radio"/>
An application that is installed by using Group Policy may be uninstalled manually.	<input checked="" type="radio"/>	<input type="radio"/>

Section: (none)
Explanation

Explanation/Reference:

QUESTION 186

HOTSPOT

You have a file on your Windows 10 workstation located at c:\temp\Scripts\. The file name is workscrtps1.

You need to allow all users who log in to the workstation the ability to run the script and make changes to it. You do not want the users to delete the file shown in the following image:



Use the drop-down menus to select the answer choice that completes each statement. Each correct selection is worth one point.

Hot Area:

Answer Area

In order for all users to make changes without deleting the file, the [answer choice] permission is required.

- Modify
- Read
- Write

In order for all users to run the script, the [answer choice] permission is required.

- Write
- Full Control
- Read and execute

Correct Answer:

Answer Area

In order for all users to make changes without deleting the file, the [answer choice] permission is required.

- Modify
- Read
- Write

In order for all users to run the script, the [answer choice] permission is required.

- Write
- Full Control
- Read and execute

Section: (none)
Explanation

Explanation/Reference:

QUESTION 187
HOTSPOT

For each of the following statements, select Yes if the statement is true. Otherwise, select No. Each correct selection is worth one point.

Hot Area:

Answer Area
VCE To PDF - Free Practice Exam

	Yes	No
BitLocker is required for encrypting files.	<input type="radio"/>	<input type="radio"/>
An encrypted file can be permanently unencrypted.	<input type="radio"/>	<input type="radio"/>
Windows 7 Professional supports BitLocker.	<input type="radio"/>	<input type="radio"/>

VCEplus
VCE To PDF - Free Practice Exam

Correct Answer:

Answer Area
VCE To PDF - Free Practice Exam

	Yes	No
BitLocker is required for encrypting files.	<input type="radio"/>	<input checked="" type="radio"/>
An encrypted file can be permanently unencrypted.	<input checked="" type="radio"/>	<input type="radio"/>
Windows 7 Professional supports BitLocker.	<input type="radio"/>	<input checked="" type="radio"/>

VCEplus
VCE To PDF - Free Practice Exam

Section: (none)
Explanation

Explanation/Reference:

QUESTION 188
HOTSPOT

For each of the following statements, select Yes if the statement is true. Otherwise, select No. Each correct selection is worth one point.

Hot Area:

Answer Area
VCE To PDF - Free Practice Exam

Yes No

Use MSINFO32.exe to obtain information about your computer system.

Answer Area
VCE To PDF - Free Practice Exam

Use System Information to obtain details about a computer's hardware resources.

Use System Information to obtain details about a computer's software environment.

Correct Answer:

Answer Area
VCE To PDF - Free Practice Exam

Yes No

Use MSINFO32.exe to obtain information about your computer system.

Use System Information to obtain details about a computer's hardware resources.

Use System Information to obtain details about a computer's software environment.

Section: (none)

Explanation

Explanation/Reference:

QUESTION 189

HOTSPOT

For each of the following statements, select Yes if the statement is true. Otherwise, select No. Each correct selection is worth one point.

Hot Area:

Answer Area

VCE To PDF - Free Practice Exam

A Windows 7 library can display files from various locations on your computer, files from various locations across several computers on the same network, and files from various Internet locations.

Yes

No

When a location is added to an existing Windows 7 library, the contents of the added location are automatically copied to the library.

A Windows 7 library can include folders located on a CD or DVD.

Answer Area

VCE To PDF - Free Practice Exam

Correct Answer:

Answer Area

VCE To PDF - Free Practice Exam

A Windows 7 library can display files from various locations on your computer, files from various locations across several computers on the same network, and files from various Internet locations.

Yes

No

When a location is added to an existing Windows 7 library, the contents of the added location are automatically copied to the library.

A Windows 7 library can include folders located on a CD or DVD.

Answer Area

VCE To PDF - Free Practice Exam

Section: (none)

Explanation

Explanation/Reference:

QUESTION 190

HOTSPOT

For each of the following statements, select Yes if the statement is true. Otherwise, select No, Each correct selection is worth one point.

Hot Area:

Answer Area
VCE To PDF - Free Practice Exam

	Yes	No
Use the Action Center option in the Control Panel System and Security area to troubleshoot system problems.	<input type="radio"/>	<input type="radio"/>
Use the System option in the Control Panel System and Security area to defragment a disk drive.	<input type="radio"/>	<input type="radio"/>
Use the Folder Options selection in the Control Panel Appearance and Personalization area to have file extensions appear in Windows Explorer.	<input type="radio"/>	<input type="radio"/>

Correct Answer:

Answer Area
VCE To PDF - Free Practice Exam

	Yes	No
Use the Action Center option in the Control Panel System and Security area to troubleshoot system problems.	<input checked="" type="radio"/>	<input type="radio"/>
Use the System option in the Control Panel System and Security area to defragment a disk drive.	<input type="radio"/>	<input checked="" type="radio"/>
Use the Folder Options selection in the Control Panel Appearance and Personalization area to have file extensions appear in Windows Explorer.	<input checked="" type="radio"/>	<input type="radio"/>

Section: (none)
Explanation

Explanation/Reference:

QUESTION 191

DRAG DROP

Match the Windows feature to its corresponding usage.

To answer, drag the appropriate Windows feature from the column on the left to its corresponding usage on the right. Each Windows feature may be used once, more than once, or not at all. Each correct match is worth one point.

Select and Place:

Windows features	Answer Area
Windows Media Player	enables screen capture and editing of the captured image
Windows Media Center	troubleshoots, enables, and disables startup services
IPCONFIG	requires use of the command prompt
Snipping Tool	enables media playback, DVR functionality, HDTV capability, and watching live TV
MSCONFIG	

Correct Answer:

Windows features	Answer Area
Windows Media Player	enables screen capture and editing of the captured image
	troubleshoots, enables, and disables startup services
	requires use of the command prompt
	enables media playback, DVR functionality, HDTV capability, and watching live TV

Section: (none)
Explanation

Explanation/Reference:

QUESTION 192

HOTSPOT

For each of the following statements, select Yes if the statement is true. Otherwise, select No. Each correct selection is worth one point.

Hot Area:

Answer Area
VCEplus
VCE To PDF - Free Practice Exam

	Yes	No
Only an administrator can install a plug and play device.	<input type="radio"/>	<input type="radio"/>
If a plug and play device driver is placed in the driver store, non-administrative accounts can install the device.	<input type="radio"/>	<input type="radio"/>
A network printer installs automatically on Windows.	<input type="radio"/>	<input type="radio"/>

Correct Answer:

Answer Area
VCEplus
VCE To PDF - Free Practice Exam

	Yes	No
Only an administrator can install a plug and play device.	<input type="radio"/>	<input checked="" type="radio"/>
If a plug and play device driver is placed in the driver store, non-administrative accounts can install the device.	<input checked="" type="radio"/>	<input type="radio"/>
A network printer installs automatically on Windows.	<input type="radio"/>	<input checked="" type="radio"/>

Section: (none)

Explanation

Explanation/Reference:

QUESTION 193

HOTSPOT

You are working as a technical intern for Tailspin Toys. A product developer plans to attend a convention in France and wants to bring a company-owned Windows 7 Ultimate laptop. Your manager is concerned about the security of the information contained on the laptop and asks you to turn on BitLocker.

You receive the error message shown in the following image:

A compatible Trusted Platform Module (TPM) Security Device must be present on this computer, but a TPM was not found. Please contact your system administrator to enable BitLocker.

[What are BitLocker's system requirements?](#)

Use the drop-down menus to select the answer choice that completes each statement. Each correct selection is worth one point

Hot Area:

Answer Area

You check [answer choice] on the system to see if a TPM was disabled.

If it is determined that the system does not have a TPM, you should use [answer choice] to allow you to enable BitLocker on the computer.

System Bios
Disk Management
Devices and Printers

Local Security Policy
Disk Management
BitLocker Administration

Correct Answer:

Answer Area

You check [answer choice] on the system to see if a TPM was disabled.

If it is determined that the system does not have a TPM, you should use [answer choice] to allow you to enable BitLocker on the computer.

System Bios
Disk Management
Devices and Printers

Local Security Policy
Disk Management
BitLocker Administration

Section: (none)
Explanation

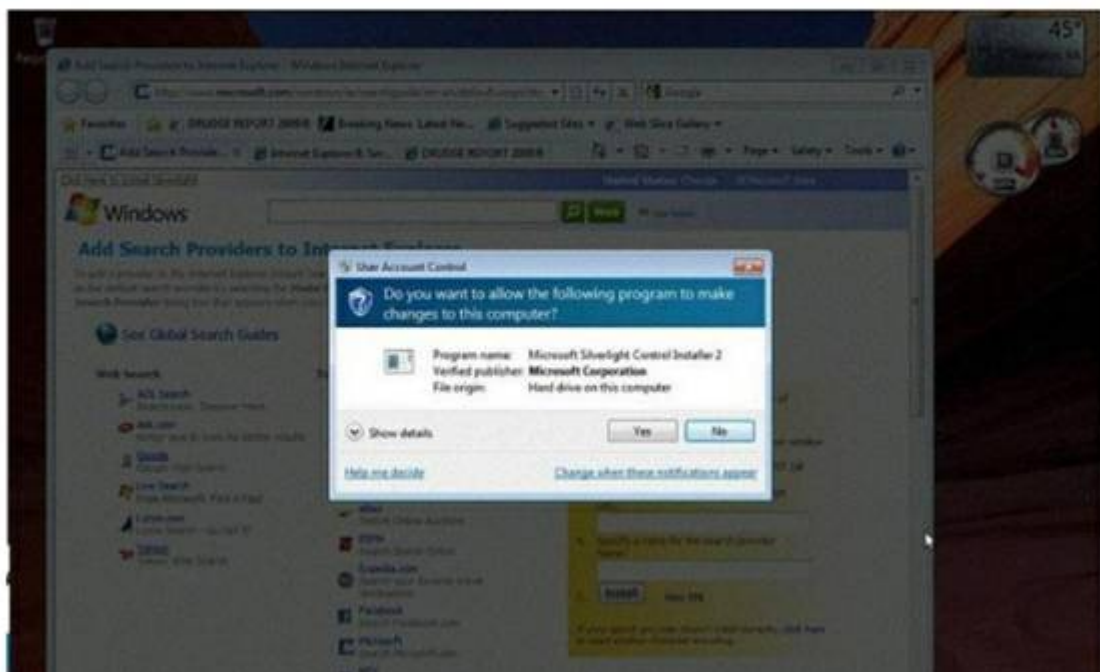
Explanation/Reference:

QUESTION 194

HOTSPOT

You are an IT intern for a nonprofit organization.

A user in the accounting department receives the message shown in the following image:



You need to explain the message to the user.

Use the drop-down menus to select the answer choice that completes each statement. Each correct selection is worth one point

Hot Area:

Answer Area

The dimming of the background behind the dialog box indicates that the message is [answer choice]

The question mark icon in the dialog box means Windows believes there is a [answer choice] trying to install.

Correct Answer:

Answer Area

The dimming of the background behind the dialog box indicates that the message is [answer choice]

The question mark icon in the dialog box means Windows believes there is a [answer choice] trying to install.

Section: (none)

Explanation

Explanation/Reference:

QUESTION 195

HOTSPOT

For each of the following statements, select Yes if the statement is true. Otherwise, select No. Each correct selection is worth one point.

Hot Area:

Answer Area
VCE To PDF - Free Practice Exam

	Yes	No
NTFS and FAT32 both support a file size of over 4 GB.	<input type="radio"/>	<input type="radio"/>
NTFS and FAT32 can both use permissions and encryption.	<input type="radio"/>	<input type="radio"/>
NTFS and FAT32 can both be used as the format for Windows 7.	<input type="radio"/>	<input type="radio"/>

Correct Answer:

Answer Area
VCE To PDF - Free Practice Exam

	Yes	No
NTFS and FAT32 both support a file size of over 4 GB.	<input type="radio"/>	<input checked="" type="radio"/>
NTFS and FAT32 can both use permissions and encryption.	<input type="radio"/>	<input checked="" type="radio"/>
NTFS and FAT32 can both be used as the format for Windows 7.	<input checked="" type="radio"/>	<input type="radio"/>

Section: (none)

Explanation

Explanation/Reference:

QUESTION 196

HOTSPOT

For each of the following statements, select Yes if the statement is true. Otherwise, select No. Each correct selection is worth one point.

Hot Area:

Answer Area
VCE To PDF - Free Practice Exam

	Yes	No
Users logged in to Windows 7 as administrators are given a standard user token in addition to their administrator token.	<input type="radio"/>	<input type="radio"/>
A standard user account is able to make changes to services or drivers that affect other users of the computer.	<input type="radio"/>	<input type="radio"/>
To make changes to how UAC operates, you must be logged in as an administrator.	<input type="radio"/>	<input type="radio"/>

Correct Answer:

Answer Area
VCE To PDF - Free Practice Exam

	Yes	No
Users logged in to Windows 7 as administrators are given a standard user token in addition to their administrator token.	<input checked="" type="radio"/>	<input type="radio"/>
A standard user account is able to make changes to services or drivers that affect other users of the computer.	<input type="radio"/>	<input checked="" type="radio"/>
To make changes to how UAC operates, you must be logged in as an administrator.	<input checked="" type="radio"/>	<input type="radio"/>

Section: (none)

Explanation

Explanation/Reference:

QUESTION 197

HOTSPOT

For each of the following statements, select Yes if the statement is true. Otherwise, select No. Each correct selection is worth one point.

Hot Area:

Answer Area
VCE To PDF - Free Practice Exam

	Yes	No
Installing Windows XP Mode requires a separate license for Windows XP.	<input type="radio"/>	<input type="radio"/>
Programs from an XP Mode installation display in both the Windows 7 list of programs and the XP Mode list of programs.	<input type="radio"/>	<input type="radio"/>
Windows XP Mode is available for Windows 7 Home.	<input type="radio"/>	<input type="radio"/>

VCEplus
VCE To PDF - Free Practice Exam

Correct Answer:

Answer Area
VCE To PDF - Free Practice Exam

	Yes	No
Installing Windows XP Mode requires a separate license for Windows XP.	<input type="radio"/>	<input checked="" type="radio"/>
Programs from an XP Mode installation display in both the Windows 7 list of programs and the XP Mode list of programs.	<input checked="" type="radio"/>	<input type="radio"/>
Windows XP Mode is available for Windows 7 Home.	<input type="radio"/>	<input checked="" type="radio"/>

VCEplus
VCE To PDF - Free Practice Exam

Section: (none)
Explanation

Explanation/Reference:

QUESTION 198

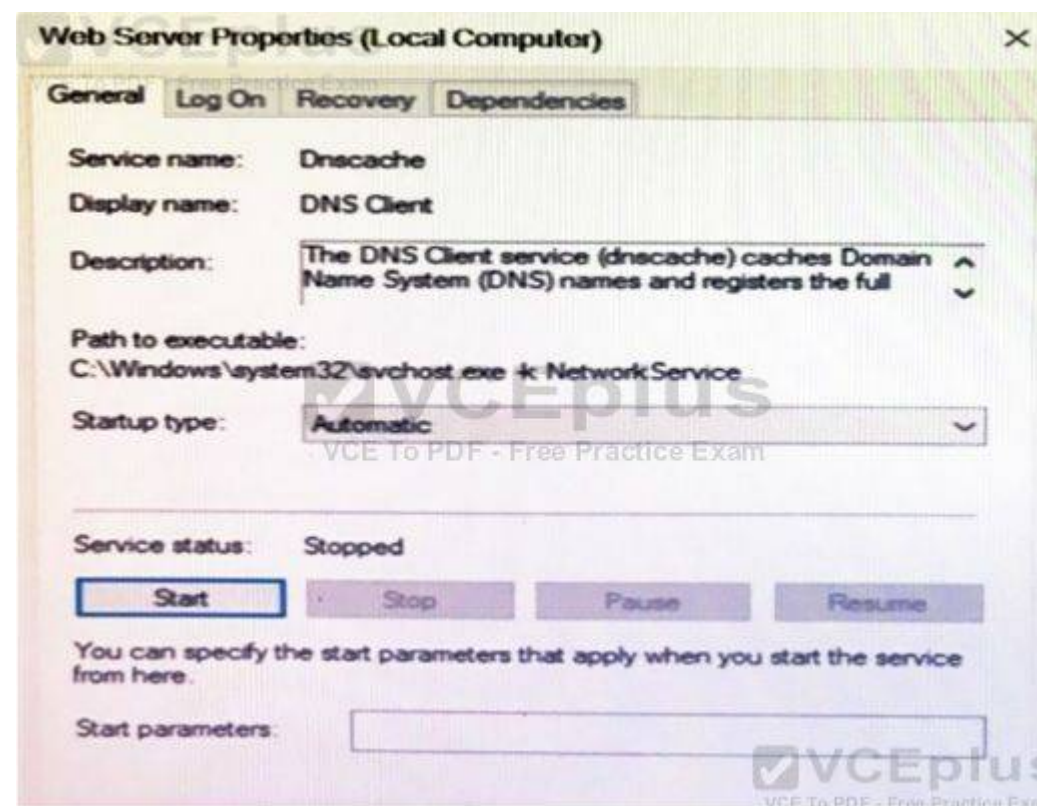
HOTSPOT

You set up a Web Server for your group project for a Web Development class. You install the Web Server service on your Windows 10 machine. The Web Server service fails to start even though it is set to automatic. You need to view other services that may have caused the failure.

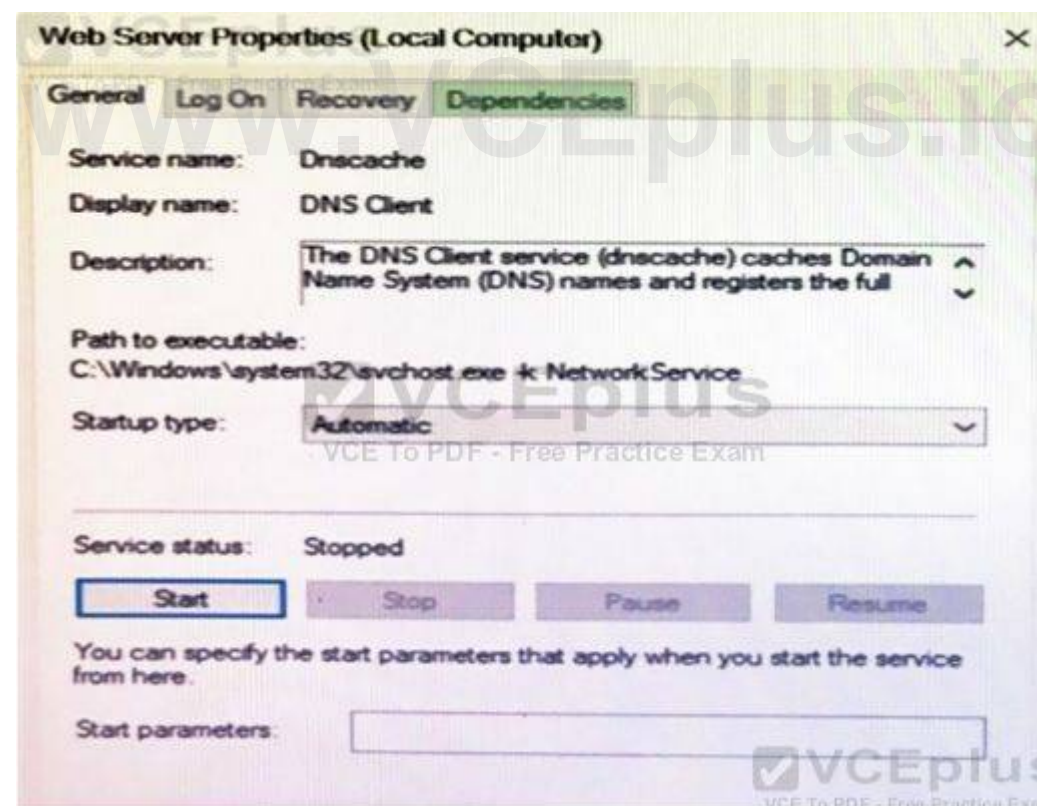
Which area on the graphic should you select to accomplish this goal?

Instructions: To answer: select the appropriate object in the answer area.

Hot Area:



Correct Answer:



Section: (none)
 Explanation

Explanation/Reference:

QUESTION 199

HOTSPOT

Instructions: For each of the following statements, select Yes if the statement is true. Otherwise, select No. NOTE: Each correct selection is worth one point.

Hot Area:

Answer Area
VCE To PDF - Free Practice Exam

	Yes	No
You can perform an in-place upgrade to Windows 10 from both Microsoft Windows 8.1 and Windows 7 SP1.	<input type="radio"/>	<input type="radio"/>
Upgrading to a 64-bit version of Windows 10 is only possible from a previous 32-bit version of Windows.	<input type="radio"/>	<input type="radio"/>
All upgrades to Windows 10 require booting from installation media.	<input type="radio"/>	<input type="radio"/>

Correct Answer:

Answer Area
VCE To PDF - Free Practice Exam

	Yes	No
You can perform an in-place upgrade to Windows 10 from both Microsoft Windows 8.1 and Windows 7 SP1.	<input checked="" type="radio"/>	<input type="radio"/>
Upgrading to a 64-bit version of Windows 10 is only possible from a previous 32-bit version of Windows.	<input type="radio"/>	<input checked="" type="radio"/>
All upgrades to Windows 10 require booting from installation media.	<input checked="" type="radio"/>	<input type="radio"/>

Section: (none)
Explanation

Explanation/Reference:

QUESTION 200

HOTSPOT

Instructions: For each of the following statements, select Yes if the statement is true. Otherwise, select No. NOTE: Each correct selection is worth one point.

Hot Area:

Answer Area
VCE To PDF - Free Practice Exam

- | | Yes | No |
|--|-----------------------|-----------------------|
| The Hyper-V role can be installed on Windows 10 Home. | <input type="radio"/> | <input type="radio"/> |
| Hyper-V virtual machines can only run Microsoft operating systems. | <input type="radio"/> | <input type="radio"/> |
| A private, virtual network can be created among virtual machines. | <input type="radio"/> | <input type="radio"/> |

Answer Area
VCE To PDF - Free Practice Exam

Answer Area
VCE To PDF - Free Practice Exam

Correct Answer:

Answer Area
VCE To PDF - Free Practice Exam

- | | Yes | No |
|--|----------------------------------|----------------------------------|
| The Hyper-V role can be installed on Windows 10 Home. | <input type="radio"/> | <input checked="" type="radio"/> |
| Hyper-V virtual machines can only run Microsoft operating systems. | <input type="radio"/> | <input checked="" type="radio"/> |
| A private, virtual network can be created among virtual machines. | <input checked="" type="radio"/> | <input type="radio"/> |

Answer Area
VCE To PDF - Free Practice Exam

Answer Area
VCE To PDF - Free Practice Exam

Section: (none)

Explanation

Explanation/Reference:

QUESTION 201

HOTSPOT

Instructions: For each of the following statements, select Yes if the statement is true. Otherwise, select No. NOTE: Each correct selection is worth one point.

Hot Area:



	Yes	No
Launch Action Center from the System Tray to troubleshoot the system problems.	<input type="radio"/>	<input type="radio"/>
Use the System option in the Control Panel System and Security area to defragment.	<input type="radio"/>	<input type="radio"/>
Use the Folder Options selection in the Control Panel Appearance and personalization area to have file extensions appear in Windows Explorer.	<input type="radio"/>	<input type="radio"/>

Correct Answer:



	Yes	No
Launch Action Center from the System Tray to troubleshoot the system problems.	<input checked="" type="radio"/>	<input type="radio"/>
Use the System option in the Control Panel System and Security area to defragment.	<input checked="" type="radio"/>	<input type="radio"/>
Use the Folder Options selection in the Control Panel Appearance and personalization area to have file extensions appear in Windows Explorer.	<input checked="" type="radio"/>	<input type="radio"/>

Section: (none)

Explanation

Explanation/Reference:

QUESTION 202

Which statement describes code executing in user mode?

- A. It has complete and unrestricted access to the underlying hardware.
- B. It can switch to kernel mode execution to carry out i/o functions.
- C. It can access every memory address and execute any CPU instruction.
- D. It has no ability to directly access hardware or reference memory.

Correct Answer: D

Section: (none)

Explanation

Explanation/Reference:

QUESTION 203

Your brother asks you for help installing Windows 10 on this laptop. His laptop does not have a DVD drive on it. Which software should you use to create a bootable USB memory stick that can be used to install Windows?

- A. Media creation tool
- B. Windows Update
- C. Windows Easy transfer
- D. PCmover Express

Correct Answer: A

Section: (none)

Explanation

Explanation/Reference:

QUESTION 204

You work for the school library. You are instructed to upgrade all of the library's Windows 8.1 devices to Windows 10 64-bit. What is the minimum memory the devices must have for you to be able to install Windows 10 64-bit?

- A. 8 GB
- B. 4 GB
- C. 1 GB
- D. 2 GB

Correct Answer: D

Section: (none)

Explanation

Explanation/Reference:

References: <https://www.microsoft.com/en-gb/windows/windows-10-specifications>

QUESTION 205

You want to upgrade your computer from Windows 8.1 to Windows 10.

What is the minimum processor speed required to run a 64-bit version of Windows 10?

- A. 1.2 GHz
- B. 1.8 GHz
- C. 800 MHz
- D. 1.0 GHz

Correct Answer: D

Section: (none)

Explanation

Explanation/Reference:

References: <https://www.microsoft.com/en-gb/windows/windows-10-specifications>

QUESTION 206

This question requires that you evaluate the underlined text to determine if it is correct.

A Service Account requires local group membership in the Administrators group to start and stop services.

Instructions: Review the underlined text. If it makes the statement correct, select "No change is needed." If the statement is incorrect, select the answer choice that makes the statement correct.

- A. Power Users
- B. Netmon Users
- C. Access Control Assistance Operators
- D. No change is needed

Correct Answer: D

Section: (none)

Explanation

Explanation/Reference:

QUESTION 207

HOTSPOT

Instructions: For each of the following statements, select Yes if the statement is true. Otherwise, select No.

NOTE: Each correct selection is worth one point.

Hot Area:

Hot Area:

	Yes	No
A printer attached to a Windows 10 computer can be shared with other computers running different versions of Windows.	<input type="radio"/>	<input type="radio"/>
If you are only sharing a printer, file and print sharing does not need to be turned on.	<input type="radio"/>	<input type="radio"/>
You can only share one printer that is connected to your computer.	<input type="radio"/>	<input type="radio"/>

Correct Answer:

www.VCEplus.io

	Yes	No
A printer attached to a Windows 10 computer can be shared with other computers running different versions of Windows.	<input checked="" type="radio"/>	<input type="radio"/>
If you are only sharing a printer, file and print sharing does not need to be turned on.	<input type="radio"/>	<input checked="" type="radio"/>
You can only share one printer that is connected to your computer.	<input type="radio"/>	<input checked="" type="radio"/>

Section: (none)

Explanation

Explanation/Reference:

QUESTION 208

DRAG DROP

You install a new monitor to your Windows 10 computer.

The following graphic shows the driver recommendations for the monitor.



← Update Driver Software - Generic Non-PnP Monitor

The best driver software for your device is already installed

Windows has determined the driver software for your device is up to date.



Generic Non-PnP Monitor

Close

Instructions: Use the drop-down menus to select the answer choice that completes each statement based on the information presented in the graphic.

NOTE: Each correct selection is worth one point.

Hot Area:

Hot Area:

Why did the system choose this driver as the best available?

Choose One...

- Windows 10 cannot identify the monitor and has installed the default driver.
- Windows 10 does not have the drivers for the monitor as part of the auto update feature.
- Windows 10 does not support the monitor, and a generic driver must be used.

How can you update the monitor device driver to properly support the make and model?

Choose One...

- Manually install the drivers.
- Run Windows Update.
- Restart the Windows 10 device.

Correct Answer:

Why did the system choose this driver as the best available?

Choose One...

- Windows 10 cannot identify the monitor and has installed the default driver.
- Windows 10 does not have the drivers for the monitor as part of the auto update feature.
- Windows 10 does not support the monitor, and a generic driver must be used.

How can you update the monitor device driver to properly support the make and model?

Choose One...

- Manually install the drivers.
- Run Windows Update.
- Restart the Windows 10 device.

Section: (none)
Explanation

Explanation/Reference:

QUESTION 209

HOTSPOT

A classmate upgraded her laptop from Windows 8.1 to Windows 10. She wants more information about customizing the Start Menu.

Instructions: For each of the following statements, select Yes if the statement is true?

NOTE: Each correct selection is worth one point.

Hot Area:

Hot Area:

www.VCEplus.io

	Yes	No
The Windows 10 Start Menu can be made larger or smaller by dragging the edges of the menu.	<input type="radio"/>	<input type="radio"/>
Pressing the Windows logo key + G creates a new group on the Windows 10 Start Menu.	<input type="radio"/>	<input type="radio"/>
Selecting a group name in the Windows 10 Start Menu allows you to change its name.	<input type="radio"/>	<input type="radio"/>

Correct Answer:

	Yes	No
The Windows 10 Start Menu can be made larger or smaller by dragging the edges of the menu.	<input checked="" type="radio"/>	<input type="radio"/>
Pressing the Windows logo key + G creates a new group on the Windows 10 Start Menu.	<input type="radio"/>	<input checked="" type="radio"/>
Selecting a group name in the Windows 10 Start Menu allows you to change its name.	<input type="radio"/>	<input checked="" type="radio"/>

Section: (none)
Explanation

Explanation/Reference:

QUESTION 210

DRAG DROP

Match the User Account Control Notification icon description to the appropriate definition. Instructions: To answer, drag the appropriate User Account Control Notification icon description from the column on the left to its definition on the right. Each description may be used once, more than once, or not at all. You may need to drag the split bar between panes or scroll to view content.

NOTE: Each correct selection is worth one point. **Select and Place:**

Select and Place:

User Account Control Notification Icon Descriptions	Answer Area	
Blocked icon, represented by a red shield with an X	Windows needs your approval to start.	icon
Perm icon, represented by a shield with blue and yellow markings	A program with an unrecognized publisher needs your permission to start.	icon
Unknown icon, represented by a yellow shield with an exclamation point	You have been prevented by your system administrator from running this program.	icon

Correct Answer:

User Account Control Notification Icon Descriptions

Answer Area

Windows needs your approval to start.

• A program with an unrecognized publisher needs your permission to start.

• You have been prevented by your system administrator from running this program.

Perm icon, represented by a shield with blue and yellow markings

Unknown icon, represented by a yellow shield with an exclamation point

Blocked icon, represented by a red shield with an X

Section: (none)
Explanation

Explanation/Reference:

QUESTION 211

While attempting to install Windows 10 on your laptop, you receive the following error message on a blue screen:

www.VCEplus.io

```
*****
Dump File : 073116-32437-01.dmp
Crash Time : 7/31/2016 10:44:12 AM
Bug Check String : IRQL_NOT_LESS_OR_EQUAL
Bug Check Code : 0x0000000a
Parameter 1 : 00000000`00000002
Parameter 2 : 00000000`00000002
Parameter 3 : 00000000`00000001
Parameter 4: fffff802`0acadc04
Caused By Driver : ntoskrnl.exe
Caused By Address : ntoskrnl.exe+14cc20
File Description :
Product Name :
Company :
File Version :
Processor : x64
Crash Address : ntoskrnl.exe+14cc20
Stack Address 1 :
Stack Address 2 :
Stack Address 3 :
Computer Name :
Full Path : C:\Windows\Minidump\081915-32437-01.dmp
Processors Count : 2
Major Version : 15
Minor Version : 10240
Dump File Size : 278,384
Dump File Time : 7/31/2016 10:45:28 AM
```

www.VCEplus.io

Based on the content in the message, what is likely causing the error?

- A. Invalid memory is accessed when there are no more IRQLs available
- B. The CPU timed out while waiting for the device response
- C. Invalid memory is accessed by a device driver
- D. Invalid memory is accessed when the IRQL is too high

Correct Answer: C

Section: (none)

Explanation

Explanation/Reference:

The IRQL_NOT_LESS_OR_EQUAL bug check indicates that Microsoft Windows or a kernel-mode driver accessed paged memory at an invalid address while at a raised interrupt request level (IRQL).

References:

<https://docs.microsoft.com/en-us/windows-hardware/drivers/debugger/bug-check-0xa--irql-not-less-or-equal>

QUESTION 212

What happens when a kernel mode process terminates abnormally in Windows 10?

- A. The process must be restarted manually
- B. The operating system crashes
- C. Windows restarts the process
- D. Windows runs the debug utility

Correct Answer: B

Section: (none)

Explanation**Explanation/Reference:****QUESTION 213**

You are employed as a senior administrator at VCEplus. The VCEplus network consists of a single domain named VCEplus.com. You are running a Windows Operating System Fundamentals training exercise. You are currently discussing the use of PowerShell. Which of the following suitably describes the purpose of PowerShell?

- A. For diagnosing Active Directory replication problems between domain controllers running Microsoft Windows operating systems.
- B. For connecting to a failover cluster.
- C. For controlling and automating the administration of the Windows operating system and applications that runs on Windows.
- D. For backing up and restoring your operating system, volumes, files, folders, and applications from a command prompt.

Correct Answer: C**Section: (none)****Explanation****Explanation/Reference:**

Reference: <http://technet.microsoft.com/en-us/library/dn425048.aspx>

QUESTION 214

You are employed as a senior administrator at VCEplus123.io. The VCEplus123.io network consists of a single domain named VCEplus123.io. You are running a Windows Operating System Fundamentals training exercise. One of the trainees would like to know where to navigate to, to modify the default Internet Explorer home page. Which of the following options should you recommend?

- A. To navigate to History in Internet Explorer.
- B. To navigate to Bookmarks in Internet Explorer.
- C. To navigate to Internet Options in Internet Explorer.
- D. To navigate to Recent Pages in Internet Explorer.

www.VCEplus.io

Correct Answer: C**Section: (none)****Explanation****Explanation/Reference:****QUESTION 215**

You are employed as a senior administrator at VCEplus123.io. The VCEplus123.io network consists of a single domain named VCEplus123.io. You are running a Windows Operating System Fundamentals training exercise. You are currently discussing a program or process that runs in the background without the need for user participation. What are these programs or processes known as?

- A. A Windows service.
- B. A Windows process.
- C. A Windows application.
- D. A Windows task.

Correct Answer: A**Section: (none)****Explanation****Explanation/Reference:****QUESTION 216**

You are employed as a senior administrator at VCEplus123.io. The VCEplus123.io network consists of a single domain named VCEplus123.io. You are running a Windows Operating System Fundamentals training exercise. You are currently discussing Windows Defender.

Which of the following is a benefit of Windows Defender with regards to protection?

- A. Threats that are labeled as severe or high can be removed from the system automatically although the Windows Defender interface is not running.
- B. Updated action options are easier to recognize.
- C. A maximum cache size is retained.
- D. Supplementary Group Policy settings offer improved Windows Defender management.

Correct Answer: A

Section: (none)

Explanation

Explanation/Reference:

[http://technet.microsoft.com/en-us/library/dd996615\(v=WS.10\).aspx](http://technet.microsoft.com/en-us/library/dd996615(v=WS.10).aspx)

QUESTION 217

You are employed as an intern in VCEplus123.io's IT department. The VCEplus123.io network consists of a single domain named VCEplus123.io. All workstations on the VCEplus123.io network have Windows 7 installed. You have been instructed to make sure that a workstation that currently makes use of FAT, makes use of NTFS. You want to achieve this using a specific command. Which of the following is the command you should use?

- A. Change C:/fs:ntfs
- B. Switch C:/fs:ntfs
- C. Convert C:/fs:ntfs
- D. Modify C:/fs:ntfs

Correct Answer: C

Section: (none)

Explanation

Explanation/Reference:

<http://technet.microsoft.com/en-us/library/bb456984.aspx>

www.VCEplus.io

QUESTION 218

You are employed at VCEplus123.io. The VCEplus123.io network consists of a single domain named VCEplus123.io.

You want make sure that a folder that contains the files you are currently using, is available to certain colleagues in your department for viewing and editing purposes. You also have to make sure that the folder is not available to users outside of your department.

You are planning to assign the necessary access to the selected users via the Share With menu.

Which of the following is the access you should assign?

- A. Full.
- B. Read.
- C. Write.
- D. Read/Write.

Correct Answer: D

Section: (none)

Explanation

Explanation/Reference:

QUESTION 219

You are employed at VCEplus123.io. The VCEplus123.io network consists of a single domain named VCEplus123.io.

When starting Windows and accessing files on your workstation becomes slow, you decide to improve performance using a specific Windows feature.

Which of the following is the feature you are planning to make use of?

- A. Disk Cleanup.
- B. Computer Management.
- C. Disk Defragmenter.

D. Disk Partition.

Correct Answer: C
Section: (none)
Explanation

Explanation/Reference:

QUESTION 220

You are employed as an intern in VCEplus123.io's IT department. The VCEplus123.io network consists of a single domain named VCEplus123.io. All workstations on the VCEplus123.io network have Windows 7 installed. You have received instruction to make sure that you periodically back up the system drive, the boot drive, and other drives required for Windows to run on your workstation. Which of the following actions should you take?

- A. You should consider configuring a Differential Backup.
- B. You should consider configuring a System Image Backup.
- C. You should consider configuring a Copy Backup.
- D. You should consider configuring a Personal Data Backup.

Correct Answer: B
Section: (none)
Explanation

Explanation/Reference:
<http://technet.microsoft.com/en-us/magazine/ee872304.aspx>

QUESTION 221

You are employed at VCEplus123.io. The VCEplus123.io network consists of a single domain named VCEplus123.io. Your home PC has Windows 7 Ultimate installed. You want to use Windows XP as a guest operating system. Which of the following actions should you take?

- A. You should consider installing Windows XP on a different partition.
- B. You should consider installing Windows XP on a USB drive.
- C. You should consider downgrading to Windows 7 Home Premium.
- D. You should consider making use of Windows XP mode.

Correct Answer: D
Section: (none)
Explanation

Explanation/Reference:
[http://technet.microsoft.com/en-us/library/ee449422\(v=ws.10\).aspx](http://technet.microsoft.com/en-us/library/ee449422(v=ws.10).aspx)

QUESTION 222

You are employed at VCEplus123.io. The VCEplus123.io network consists of a single domain named VCEplus123.io. You want to upgrade your Windows Vista home PC to Windows 7 64-bit. Which of the following is TRUE with regards to the CPU speed in this scenario?

- A. The maximum CPU speed required is 1 GHz.
- B. The minimum CPU speed required is 1 GHz.
- C. The maximum CPU speed required is 1.5 GHz.
- D. The minimum CPU speed required is 1.5 GHz.

Correct Answer: B
Section: (none)
Explanation

Explanation/Reference:

QUESTION 223

You are employed as an intern in VCEplus123.io's IT department. The VCEplus123.io network consists of a single domain named VCEplus123.io. All workstations on the VCEplus123.io network have Windows 7 installed. You are in the process of updating drivers on your home PC that runs Windows 7. When your PC stops responding, you decide to restart the PC. You want to make sure that the former drivers are restored. Which of the following actions should you take?

- A. You should consider restarting the PC using the Last Known Good Configuration.
- B. You should consider making use of the Start Windows Normally option.
- C. You should consider making use of Automated System Recovery.
- D. You should consider restarting the PC in Safe Mode.

Correct Answer: D

Section: (none)

Explanation

Explanation/Reference:

QUESTION 224

You are employed as a senior administrator at VCEplus123.io. The VCEplus123.io network consists of a single domain named VCEplus123.io. You are running a Windows Operating System Fundamentals training exercise. You are currently discussing a method that allows you to recover an encrypted file although the key is lost. Which of the following is the method being discussed?

- A. The use of EFS.
- B. The use of DES.
- C. The use of RADIUS encryption.
- D. The creation of a recovery certificate stored on a portable device.

Correct Answer: D

Section: (none)

Explanation

Explanation/Reference:

www.VCEplus.io

QUESTION 225

You are employed as a senior administrator at VCEplus123.io. The VCEplus123.io network consists of a single domain named VCEplus123.io. You are running a Windows Operating System Fundamentals training exercise. You are currently discussing a file system that allows for the maximum of 4 GB as the size of one complete file. Which of the following is the file system being discussed?

- A. FAT32
- B. exFAT
- C. FAT
- D. NTFS

Correct Answer: A

Section: (none)

Explanation

Explanation/Reference:

[http://technet.microsoft.com/en-us/library/cc766145\(v=WS.10\).aspx](http://technet.microsoft.com/en-us/library/cc766145(v=WS.10).aspx) [http://technet.microsoft.com/en-us/library/cc779002\(v=ws.10\).aspx](http://technet.microsoft.com/en-us/library/cc779002(v=ws.10).aspx) http://www.tech-recipes.com/rx/2801/exfat_versus_fat32_versus_ntfs/

QUESTION 226

You are employed as a senior administrator at VCEplus123.io. The VCEplus123.io network consists of a single domain named VCEplus123.io. You are running a Windows Operating System Fundamentals training exercise. You are currently discussing a feature that allows you to share documents with everybody on a network. Which of the following is the feature being discussed?

- A. Shared Folder

- B. Public folder
- C. Distributed File System
- D. Offline Files

Correct Answer: B

Section: (none)

Explanation

Explanation/Reference:

QUESTION 227

You are employed as an intern in VCEplus123.io's IT department. You have acquired a new home PC that runs Windows 7. You want to make sure that your files and settings from your old Windows XP computer is available on the new one. Which of the following actions should you take?

- A. You should consider making use of Windows Easy Transfer.
- B. You should consider making use of the User State Migration Tool.
- C. You should consider making use of the Application Compatibility Toolkit.
- D. You should consider making use of Data Drive ACL Migration.

Correct Answer: A

Section: (none)

Explanation

Explanation/Reference:

[http://technet.microsoft.com/en-us/library/dd744315\(v=WS.10\).aspx](http://technet.microsoft.com/en-us/library/dd744315(v=WS.10).aspx)

QUESTION 228

You are employed as an intern in VCEplus123.io's IT department. The VCEplus123.io network consists of a single domain named VCEplus123.io. All workstations on the VCEplus123.io network have Windows 7 installed. You have been instructed to make sure that new software can only be installed on a user's workstation by an administrator. Which of the following actions should you take?

- A. You should consider making use of Parental Controls.
- B. You should consider configuring the User Account Control settings.
- C. You should consider making use of Group Policy.
- D. You should consider making use of Computer Management.

Correct Answer: B

Section: (none)

Explanation

Explanation/Reference:

QUESTION 229

You are employed as an intern in VCEplus123.io's IT department. The VCEplus123.io network consists of a single domain named VCEplus123.io. All workstations on the VCEplus123.io network have Windows 7 installed. You have been instructed to manage the service dependencies on a VCEplus123.io user's workstation. Which of the following actions should you take?

- A. You should consider making use of the Task Manager.
- B. You should consider making use of the Device Manager.
- C. You should consider making use of the System Tray.
- D. You should consider making use of the Computer Management console.

Correct Answer: D

Section: (none)

Explanation

Explanation/Reference:

QUESTION 230

You are employed as an intern in VCEplus123.io's IT department. Your home PC is not running as fast as it should, and you want to pinpoint the programs that are depleting the most resources. Which of the following actions should you take?

- A. You should consider accessing the Computer Management console.
- B. You should consider accessing Windows Action Center.
- C. You should consider accessing the Event Viewer.
- D. You should consider accessing Task Manager.

Correct Answer: D

Section: (none)

Explanation

Explanation/Reference:

QUESTION 231

You are employed as an intern in VCEplus123.io's IT department. The VCEplus123.io network consists of a single domain named VCEplus123.io. All workstations on the VCEplus123.io network have Windows 7 installed. You are currently configuring a virtual hard disk. You have been instructed to make it as large as possible. Which of the following actions should you take?

- A. You should consider configuring the virtual hard disk to 2 TB in size.
- B. You should consider configuring the virtual hard disk to 4 TB in size.
- C. You should consider configuring the virtual hard disk to 16 TB in size.
- D. You should consider configuring the virtual hard disk to 256 TB in size.

Correct Answer: A

Section: (none)

Explanation

Explanation/Reference:

QUESTION 232

You are employed as an intern in VCEplus123.io's IT department. You would like to make sure that your home computer stores and retrieves files over the Internet using an online service. Which of the following actions should you take?

- A. You should consider configuring the use of Microsoft OneDrive.
- B. You should consider configuring the use of Windows Live SkyDrive.
- C. You should consider configuring the use of a Public Folder.
- D. You should consider configuring the use of a network drive.

Correct Answer: B

Section: (none)

Explanation

Explanation/Reference:

QUESTION 233

You are employed as an intern in VCEplus123.io's IT department. The VCEplus123.io network consists of a single domain named VCEplus123.io. All workstations on the VCEplus123.io network have Windows 7 installed. You would like to make use of a program that is currently installed on a colleague's workstation. You do not want to install it on your workstation, but still want to run it on your workstation. Which of the following actions should you take?

- A. You should consider making use of Remote Control Monitor.

www.VCEplus.io

- B. You should consider making use of Microsoft Application Virtualization.
- C. You should consider making use of Remote Desktop Connection.
- D. You should consider making use of Disk Cloning.

Correct Answer: B

Section: (none)

Explanation

Explanation/Reference:

<http://technet.microsoft.com/en-us/library/jj680850.aspx>

QUESTION 234

You are employed as an intern in VCEplus123.io's IT department. The VCEplus123.io network consists of a single domain named VCEplus123.io. All workstations on the VCEplus123.io network have Windows 7 installed. VCEplus123.io has acquired a new program that executes tasks that are resource intensive. You want make sure that your workstation is capable of running this program. Which of the following actions should you take?

- A. You should consider making use of the System configuration Utility.
- B. You should consider making use of the Device Manager.
- C. You should consider making use of Programs and Features.
- D. You should consider making use of the Windows Experience Index.

Correct Answer: D

Section: (none)

Explanation

Explanation/Reference:

QUESTION 235

You are employed as an intern in VCEplus123.io's IT department. You would like to make sure that your home computer is configured in such a way that the hours that children can make use of the computer, the types of games they can play, and the programs they can run is restricted. Which of the following actions should you take?

- A. You should consider making use of Remote Control Monitor.
- B. You should consider making use of Device Manager.
- C. You should consider making use of System Manager.
- D. You should consider making use of Parental Controls.

Correct Answer: D

Section: (none)

Explanation

Explanation/Reference:

<http://windows.microsoft.com/en-us/windows/what-can-control-parental-controls#1TC=windows-7>

QUESTION 236

You are employed as an intern in VCEplus123.io's IT department. The VCEplus123.io network consists of a single domain named VCEplus123.io. All workstations on the VCEplus123.io network have Windows 7 installed. You have been tasked with accessing a different VCEplus123.io workstation remotely. You are required to initiate the Remote Desktop Connection client. Which of the following actions should you take?

- A. You should consider navigating All Programs and accessing the Ease of Access folder.
- B. You should consider navigating All Programs and accessing the Maintenance folder.
- C. You should consider navigating All Programs and accessing the Accessories folder.
- D. You should consider navigating All Programs and accessing the Windows Live folder.

Correct Answer: C

Section: (none)

Explanation

Explanation/Reference:

QUESTION 237

You are employed as a senior administrator at VCEplus123.io. The VCEplus123.io network consists of a single domain named VCEplus123.io. You are running a Windows Operating System Fundamentals training exercise. You are currently discussing a Windows feature that allows you to enable or disable, and troubleshoot startup services. Which of the following is the feature being discussed?

- A. Computer Manager
- B. MSCONFIG
- C. IPCONFIG
- D. Help and Support

Correct Answer: B

Section: (none)

Explanation

Explanation/Reference:

QUESTION 238

You are employed as a senior administrator at VCEplus123.io. The VCEplus123.io network consists of a single domain named VCEplus123.io. You are running a Windows Operating System Fundamentals training exercise. You are currently discussing a Device Manager icon that tells you a critical error has taken place, and that the operating system has disabled the device. Which of the following is a description of the icon?

- A. A black arrow on a yellow background.
- B. A yellow arrow on a black background.
- C. A red X.
- D. A black X.

Correct Answer: C

Section: (none)

Explanation

Explanation/Reference:

QUESTION 239

You are employed as a senior administrator at VCEplus123.io. The VCEplus123.io network consists of a single domain named VCEplus123.io. You are running a Windows Operating System Fundamentals training exercise. You are currently discussing file systems with regards to Windows 7. Which of the following is the file system favored by Windows 7?

- A. NTFS
- B. FAT32
- C. exFAT
- D. FAT

Correct Answer: A

Section: (none)

Explanation

Explanation/Reference:

QUESTION 240

You are employed as an intern in VCEplus123.io's IT department. The VCEplus123.io network consists of a single domain named VCEplus123.io. All workstations on the VCEplus123.io network have Windows 7 installed. You have been tasked with making sure that VCEplus123.io users are unable to access Task Manager. Which of the following actions should you take?

www.VCEplus.io

- A. You should consider uninstalling Task Manager.
- B. You should consider making use of Group Policy.
- C. You should consider making use of Computer Manager.
- D. You should consider making use of Encrypting File System.

Correct Answer: B

Section: (none)

Explanation

Explanation/Reference:

QUESTION 241

You are employed as an intern in VCEplus123.io's IT department. The VCEplus123.io network consists of a single domain named VCEplus123.io. All workstations on the VCEplus123.io network have Windows 7 installed. You are instructed to install Windows 7 on a VCEplus123.io customer's home PC. The customer would like the PC to make use of an encryption strategy that requires the hard disk to at least include an operating system partition and an active system partition. The strategy should also require the operating system and active system partitions to be formatted with the NTFS file system, and the BIOS to be compatible with the TPM or support USB devices during computer startup.

Which of the following is the strategy you should make use of?

- A. You should consider making use of EFS.
- B. You should consider making use of SSL.
- C. You should consider making use of BitLocker.
- D. You should consider making use of RADIUS.

Correct Answer: C

Section: (none)

Explanation

Explanation/Reference:

[http://technet.microsoft.com/en-us/library/dd875544\(v=ws.10\).aspx](http://technet.microsoft.com/en-us/library/dd875544(v=ws.10).aspx)

www.VCEplus.io

QUESTION 242

You are employed as an intern in VCEplus123.io's IT department. When you started up your Home computer this morning, it fails just prior to the login prompt appearing.

You want to make sure that your computer starts up.

Which of the following actions should you take?

- A. You should consider starting the computer using the Start Windows Normally option.
- B. You should consider making use of ASR.
- C. You should consider making use of System Restore.
- D. You should consider starting the computer using the Last Known Good Configuration option.

Correct Answer: D

Section: (none)

Explanation

Explanation/Reference:

QUESTION 243

You are employed as a senior administrator at VCEplus123.io. The VCEplus123.io network consists of a single domain named VCEplus123.io.

You are running a Windows Operating System Fundamentals training exercise. You are currently discussing App-V.

Which of the following is TRUE with regards to App-V?

- A. It helps companies offer their end users access to applications by installing applications directly on their computers.
- B. It helps companies offer their end users access to applications without installing applications directly on their computers.
- C. It allows your computer to connect to a remote server.
- D. It provides you with a virtual desktop interface

Correct Answer: B
Section: (none)
Explanation

Explanation/Reference:

QUESTION 244

You are employed as a senior administrator at VCEplus123.io. The VCEplus123.io network consists of a single domain named VCEplus123.io. You are running a Windows Operating System Fundamentals training exercise. You are currently discussing ReadyBoost. Which of the following suitably describes the purpose ReadyBoost?

- A. To find out if your Windows XP computer is capable of running Windows 7.
- B. To periodically and automatically check for the most recent driver.
- C. To secure the contents of your entire hard disk drive even if an unauthorized user steals your computer.
- D. To improve disk read performance using external USB flash drives as a hard disk cache.

Correct Answer: D
Section: (none)
Explanation

Explanation/Reference:

QUESTION 245

You are employed as an intern in VCEplus123.io's IT department. The VCEplus123.io network consists of a single domain named VCEplus123.io. All workstations on the VCEplus123.io network have Windows 7 installed. Subsequent to a windows 7 installation, you restart the workstation. The restart process is, however, unsuccessful. You want to find out what the problem is. Which of the following actions should you take?

- A. You should consider making use of the Windows Recovery Environment.
- B. You should consider making use of Safe Mode.
- C. You should consider making use of Chkdsk.
- D. You should consider making use of ASR.

Correct Answer: A
Section: (none)
Explanation

Explanation/Reference:

QUESTION 246

You are employed as an intern in VCEplus123.io's IT department. The VCEplus123.io network consists of a single domain named VCEplus123.io. All workstations on the VCEplus123.io network have Windows 7 installed. You would like to collect simple real-time performance data regarding your workstation's system settings. Which of the following actions should you take?

- A. You should consider making use of Device Manager.
- B. You should consider making use of Task Manager.
- C. You should consider making use of Event Viewer.
- D. You should consider making use of the Computer Management console.

Correct Answer: B
Section: (none)
Explanation

Explanation/Reference:

QUESTION 247

You are employed as a senior administrator at VCEplus.com. The VCEplus.com network consists of a single domain named VCEplus.com. You are running a Windows Operating System Fundamentals training exercise. You are currently discussing a command-line tool that displays an all-inclusive view of your hardware, system components, and software environment. Which of the following is the command-line tool being discussed?

- A. msinfo32
- B. Msiexec
- C. Secedit
- D. Systeminfo

Correct Answer: A

Section: (none)

Explanation

Explanation/Reference:

<http://technet.microsoft.com/en-us/library/cc731397.aspx>

QUESTION 248

You are employed as a senior administrator at VCEplus123.io. The VCEplus123.io network consists of a single domain named VCEplus123.io. You are running a Windows Operating System Fundamentals training exercise. You are currently discussing a Windows feature that allows you to enable or disable an application that initiates automatically at startup. Which of the following is the Windows feature being discussed?

- A. Local Security Policy editor
- B. Device Manager
- C. Task Manager
- D. Computer Management Console

Correct Answer: D

Section: (none)

Explanation

Explanation/Reference:

www.VCEplus.io

QUESTION 249

You are employed as an intern in VCEplus123.io's IT department. The VCEplus123.io network consists of a single domain named VCEplus123.io. All workstations on the VCEplus123.io network have Windows 7 installed. You want to make sure that all the data on your workstation's hard disk is inaccessible to unauthorized persons in the event of theft. Which of the following actions should you take?

- A. You should consider making use of EFS.
- B. You should consider making use of DES.
- C. You should consider making use of RADIUS encryption.
- D. You should consider making use of BitLocker encryption.

Correct Answer: D

Section: (none)

Explanation

Explanation/Reference:

<http://technet.microsoft.com/en-us/library/cc732774.aspx>

QUESTION 250

You are employed as an intern in VCEplus123.io's IT department. The VCEplus123.io network consists of a single domain named VCEplus123.io. All workstations on the VCEplus123.io network have Windows 7 installed. You and colleague are working on a personal project. The two of you are located in different cities. You want to make sure that you share files, without have to send large e-mail attachments. Which of the following actions should you take?

- A. You should consider making use of Microsoft OneDrive.
- B. You should consider making use of a courier.

- C. You should consider making use of Skype.
- D. You should consider uploading it to the company server.

Correct Answer: A
Section: (none)
Explanation

Explanation/Reference:
<http://windows.microsoft.com/en-za/windows-8/getting-started-onedrive-tutorial>

QUESTION 251

You are employed as an intern in VCEplus123.io's IT department. The VCEplus123.io network consists of a single domain named VCEplus123.io. All workstations on the VCEplus123.io network have Windows XP installed. You are planning to migrate your workstation from Windows XP to Windows 7. You want to make sure that your workstation has this capability. Which of the following actions should you take?

- A. You should consider making use of Windows Updates.
- B. You should consider making use of the Windows 7 Upgrade Advisor.
- C. You should consider making use of the Windows 7 SDK.
- D. You should consider making use of the Windows XP SDK.

Correct Answer: B
Section: (none)
Explanation

Explanation/Reference:
<http://windows.microsoft.com/en-US/windows7/help/upgrading-from-windows-xp-to-windows-7#T1=tab01>

QUESTION 252

You are employed as an intern in VCEplus123.io's IT department. The VCEplus123.io network consists of a single domain named VCEplus123.io. All workstations on the VCEplus123.io network have Windows 7 installed. You have been instructed to access snap-ins for administering a computer's hardware, software, along with its network components. Which of the following actions should you take?

- A. You should consider accessing the Computer Management.
- B. You should consider accessing the Microsoft Management Console.
- C. You should consider accessing Disk Partition.
- D. You should consider accessing the Device Manager.

Correct Answer: B
Section: (none)
Explanation

Explanation/Reference:

QUESTION 253

You are employed as an intern in VCEplus123.io's IT department. The VCEplus123.io network consists of a single domain named VCEplus123.io. All workstations on the VCEplus123.io network have Windows 7 installed. A workstation that is used by multiple users includes a script file. You are required to make sure that these users are allowed to run and change the script, but not remove it. Which of the following is the permission required to run the script?

- A. Full control
- B. Modify
- C. Read & Execute
- D. Read
- E. Write

Correct Answer: C
Section: (none)
Explanation

Explanation/Reference:

QUESTION 254

You are employed as an intern in VCEplus123.io's IT department. The VCEplus123.io network consists of a single domain named VCEplus123.io. All workstations on the VCEplus123.io network have Windows 7 installed. You are required to make sure that certain hardware drivers are current. Your solution should allow for this process to run automatically from time to time. Which of the following is Windows feature you should make use of?

- A. Windows Update
- B. Internet Explorer
- C. Computer Manager
- D. Task Manager

Correct Answer: A

Section: (none)

Explanation

Explanation/Reference:

QUESTION 255

You are employed as an intern in VCEplus123.io's IT department. The VCEplus123.io network consists of a single domain named VCEplus123.io. All workstations on the VCEplus123.io network have Windows 7 installed. You are preparing to install manual updates on your workstation, which is configured with the default settings. Which of the following is the user account type required to achieve your goal?

- A. Administrator
- B. Standard
- C. Custom
- D. Temporary

Correct Answer: A

Section: (none)

Explanation

Explanation/Reference:

QUESTION 256

You are employed as an intern in VCEplus123.io's IT department. The VCEplus123.io network consists of a single domain named VCEplus123.io. All workstations on the VCEplus123.io network have Windows 7 installed. You want to change the file system from FAT32 to NTFS from the command prompt. Which of the following actions should you take?

- A. You should consider making use of the convert command.
- B. You should consider making use of the fdisk command.
- C. You should consider making use of the alter command.
- D. You should consider making use of the diskedit command.

Correct Answer: A

Section: (none)

Explanation

Explanation/Reference:

QUESTION 257

You are employed as an intern in VCEplus123.io's IT department. The VCEplus123.io network consists of a single domain named VCEplus123.io. All workstations on the VCEplus123.io network have Windows 7 Enterprise installed. Your assigned workstation is used by other interns as well. You want to make sure that each of you is allowed to encrypt your own files. Which of the following actions should you take?

www.VCEplus.io

- A. You should consider making use of EFS.
- B. You should consider making use of DES.
- C. You should consider making use of SSL.
- D. You should consider making use of RADIUS.

Correct Answer: A

Section: (none)

Explanation

Explanation/Reference:

QUESTION 258

You are employed as an intern in VCEplus123.io's IT department. The VCEplus123.io network consists of a single domain named VCEplus123.io. All workstations on the VCEplus123.io network have Windows 7 installed. You want to make sure that file extensions are visible in Windows Explorer. You need to access Folder Options via Control Panel. Which of the following is the area of the Control Panel you should access?

- A. User Accounts
- B. Security
- C. Appearance and Personalization
- D. Programs

Correct Answer: C

Section: (none)

Explanation

Explanation/Reference:

www.VCEplus.io

QUESTION 259

You are employed as a senior administrator at VCEplus123.io. The VCEplus123.io network consists of a single domain named VCEplus123.io. You are running a Windows Operating System Fundamentals training exercise. You are currently discussing a Windows feature that allows for troubleshooting, as well as activating and deactivating startup services. Which of the following is the Windows feature being discussed?

- A. MSCONFIG
- B. MSINFO32
- C. IPCONFIG
- D. APPCONFIG
- E. SYSEDIT

Correct Answer: A

Section: (none)

Explanation

Explanation/Reference:

QUESTION 260

You are employed as a senior administrator at VCEplus123.io. The VCEplus123.io network consists of a single domain named VCEplus123.io. You are running a Windows Operating System Fundamentals training exercise. You are currently discussing a Windows feature that allows for enabling screen capture. It also allows for the captured image to be altered. Which of the following is the Windows feature being discussed?

- A. MSCONFIG
- B. MSINFO32
- C. IPCONFIG
- D. SNIPPING TOOL
- E. SYSEDIT

Correct Answer: D
Section: (none)
Explanation

Explanation/Reference:

QUESTION 261

You are employed as an intern in VCEplus123.io's IT department. The VCEplus123.io network consists of a single domain named VCEplus123.io. All workstations on the VCEplus123.io network have Windows 7 installed. A workstation that is used by multiple users includes a script file. You are required to make sure that these users are allowed to run and change the script, but not remove it. Which of the following is the permission required to change the script?

- A. Full control
- B. Modify
- C. Read & Execute
- D. Read
- E. Write

Correct Answer: B
Section: (none)
Explanation

Explanation/Reference:

QUESTION 262

You are employed as a senior administrator at VCEplus123.io. The VCEplus123.io network consists of a single domain named VCEplus123.io. You are running a Windows Operating System Fundamentals training exercise. You are currently discussing a Windows feature that allows you to capture a screen, and edit it. Which of the following is the feature being discussed?

- A. Paint
- B. Print Screen
- C. Snipping Tool
- D. Picture Manager

Correct Answer: C
Section: (none)
Explanation

Explanation/Reference:

www.VCEplus.io